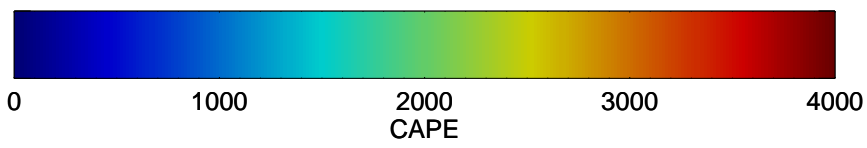
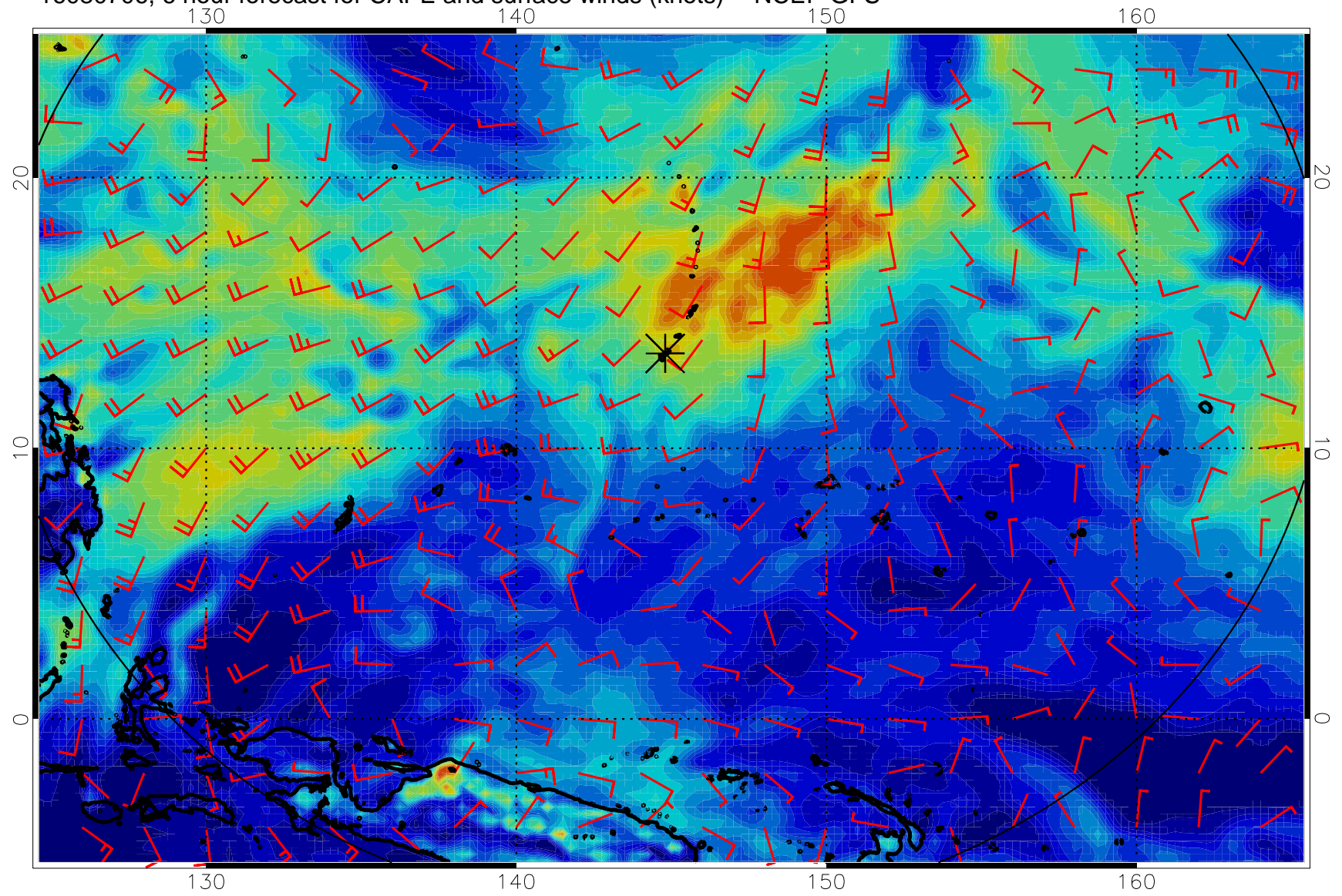
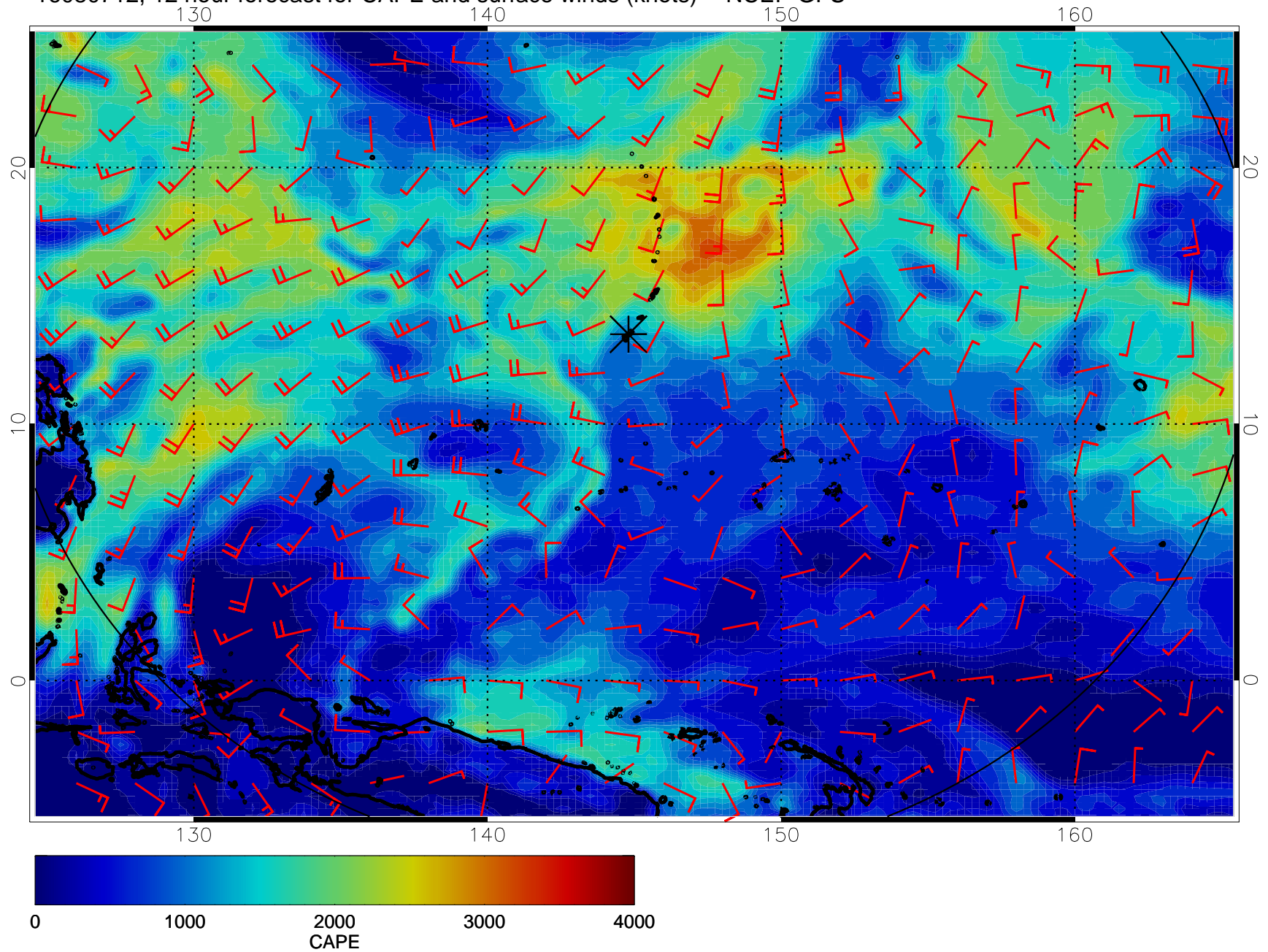


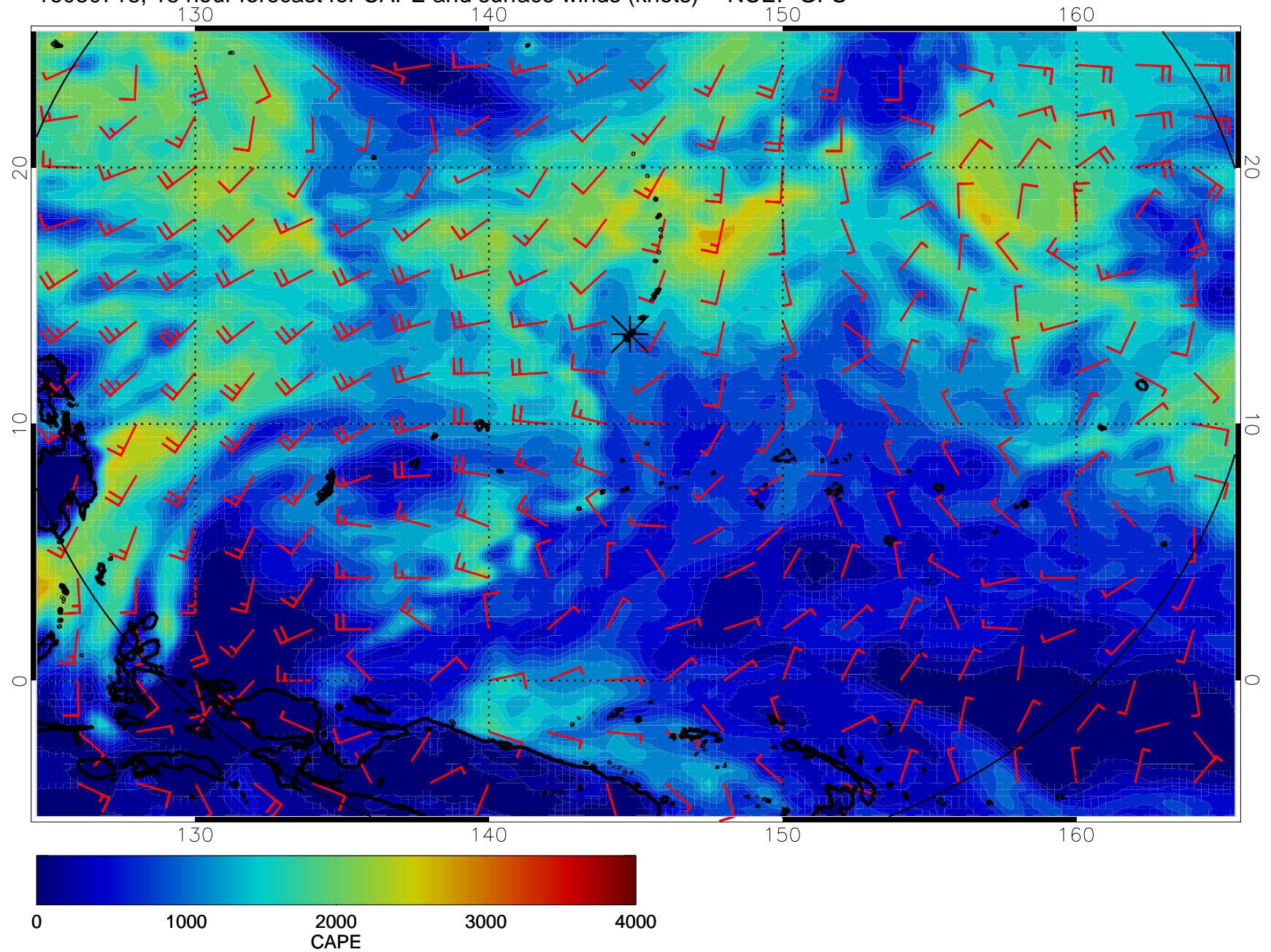
16080706, 6 hour forecast for CAPE and surface winds (knots) -- NCEP GFS



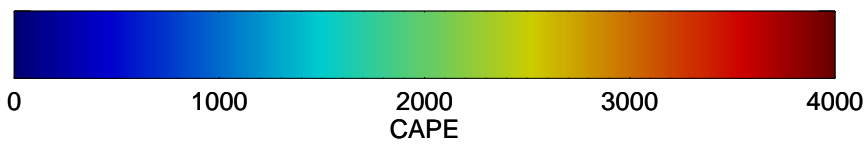
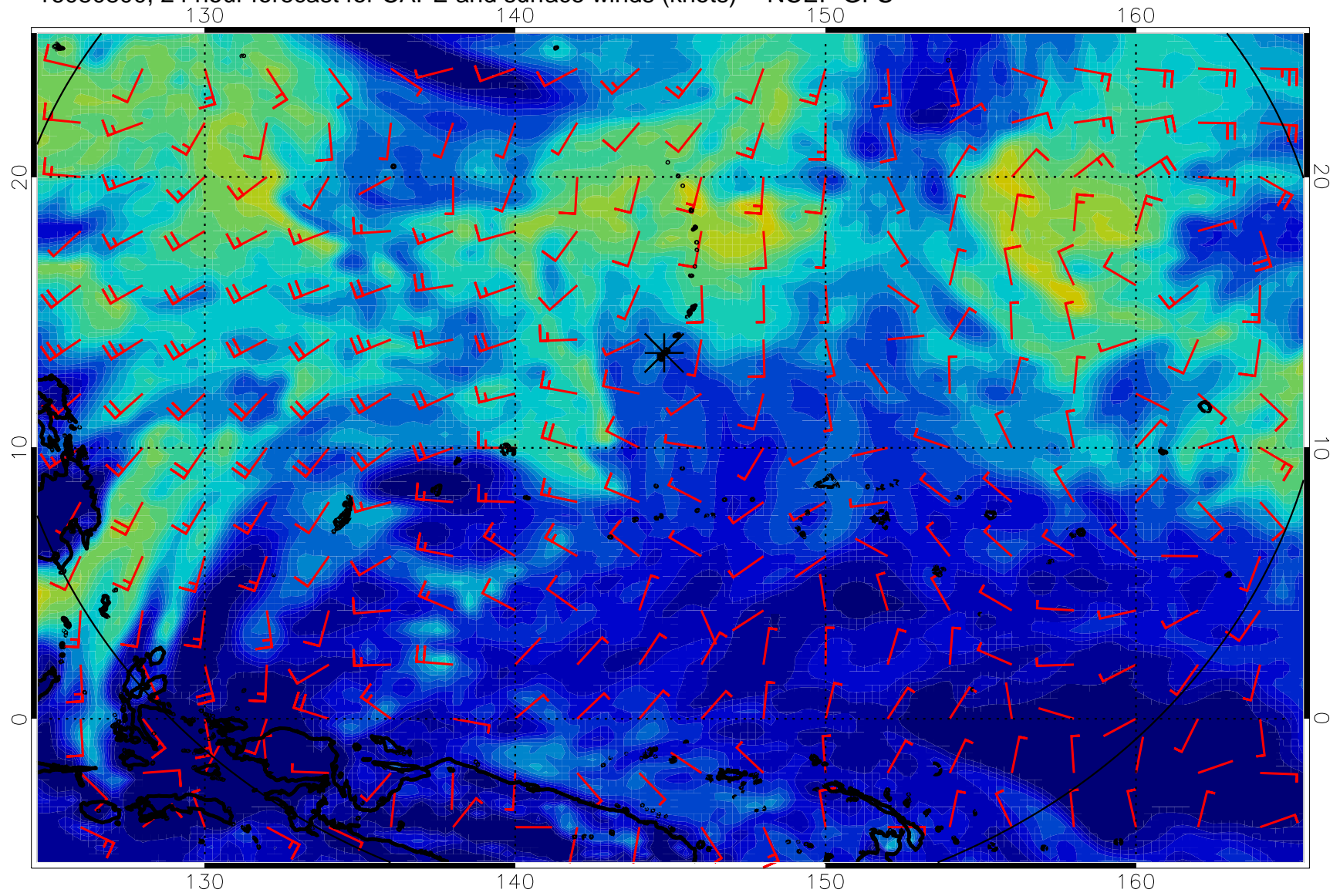
16080712, 12 hour forecast for CAPE and surface winds (knots) -- NCEP GFS



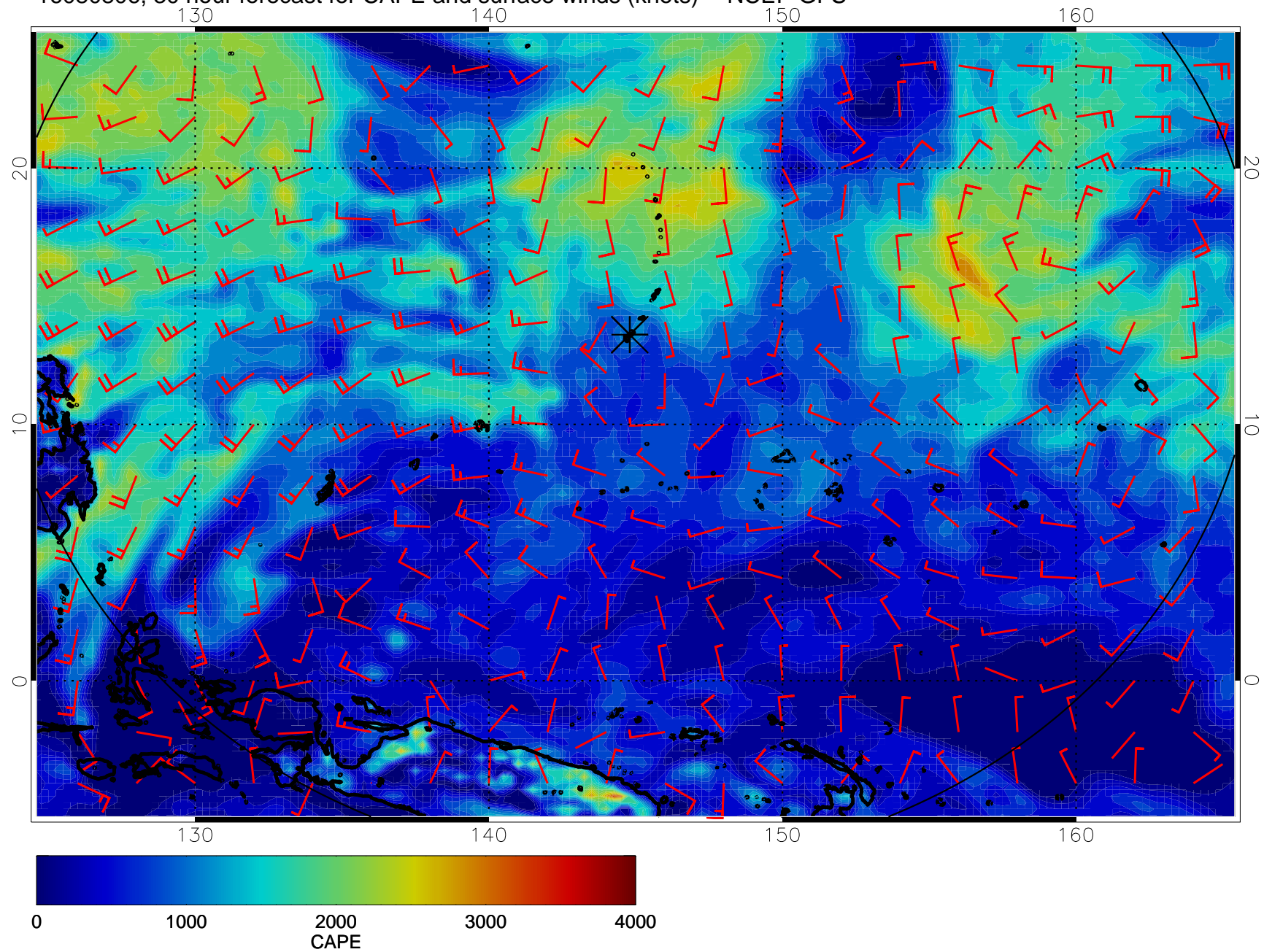
16080718, 18 hour forecast for CAPE and surface winds (knots) -- NCEP GFS



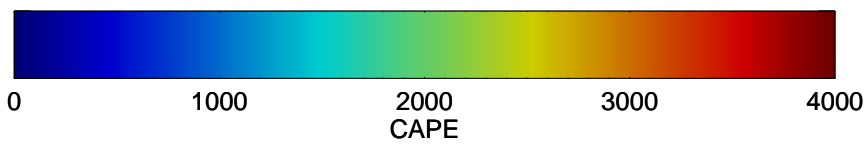
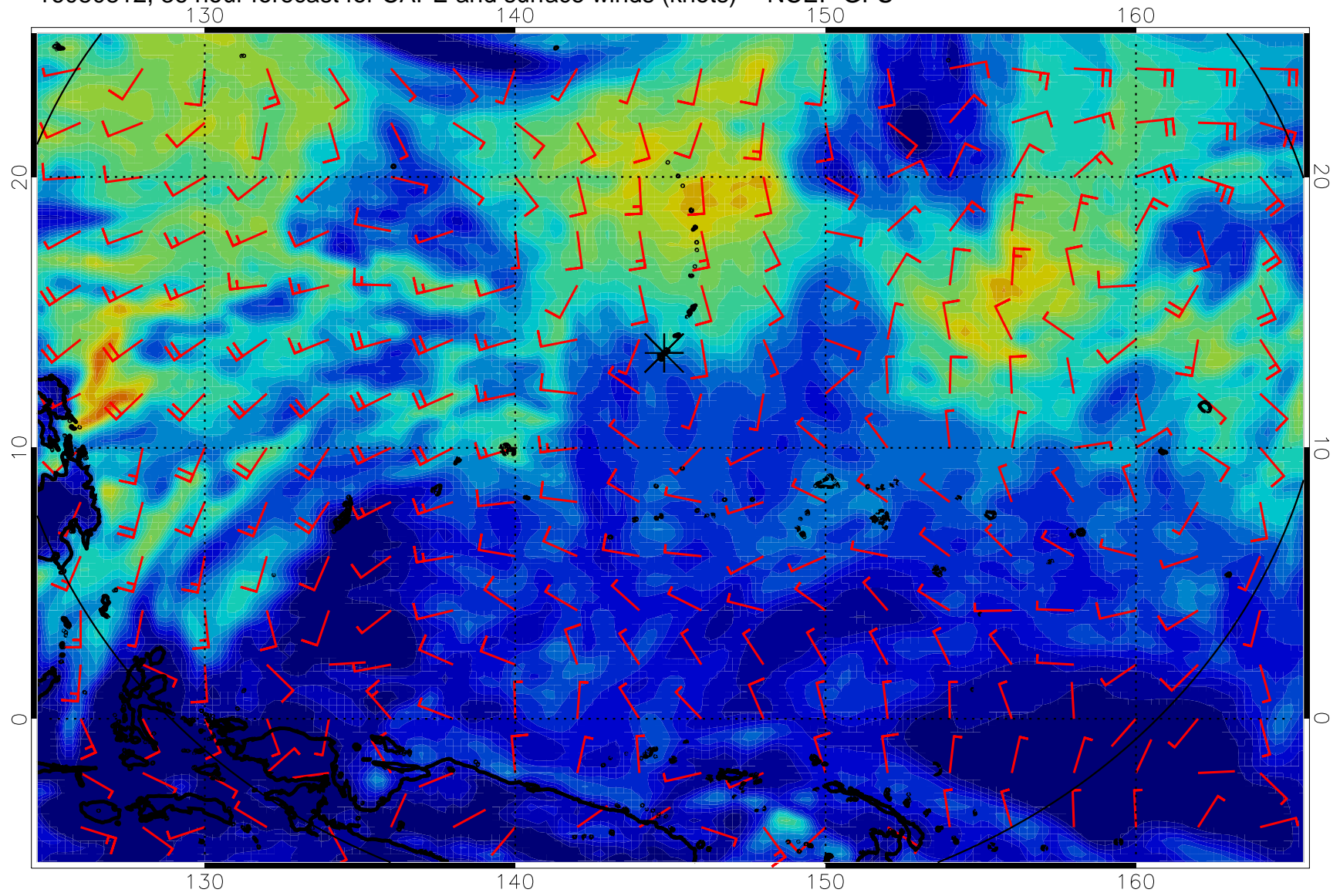
16080800, 24 hour forecast for CAPE and surface winds (knots) -- NCEP GFS



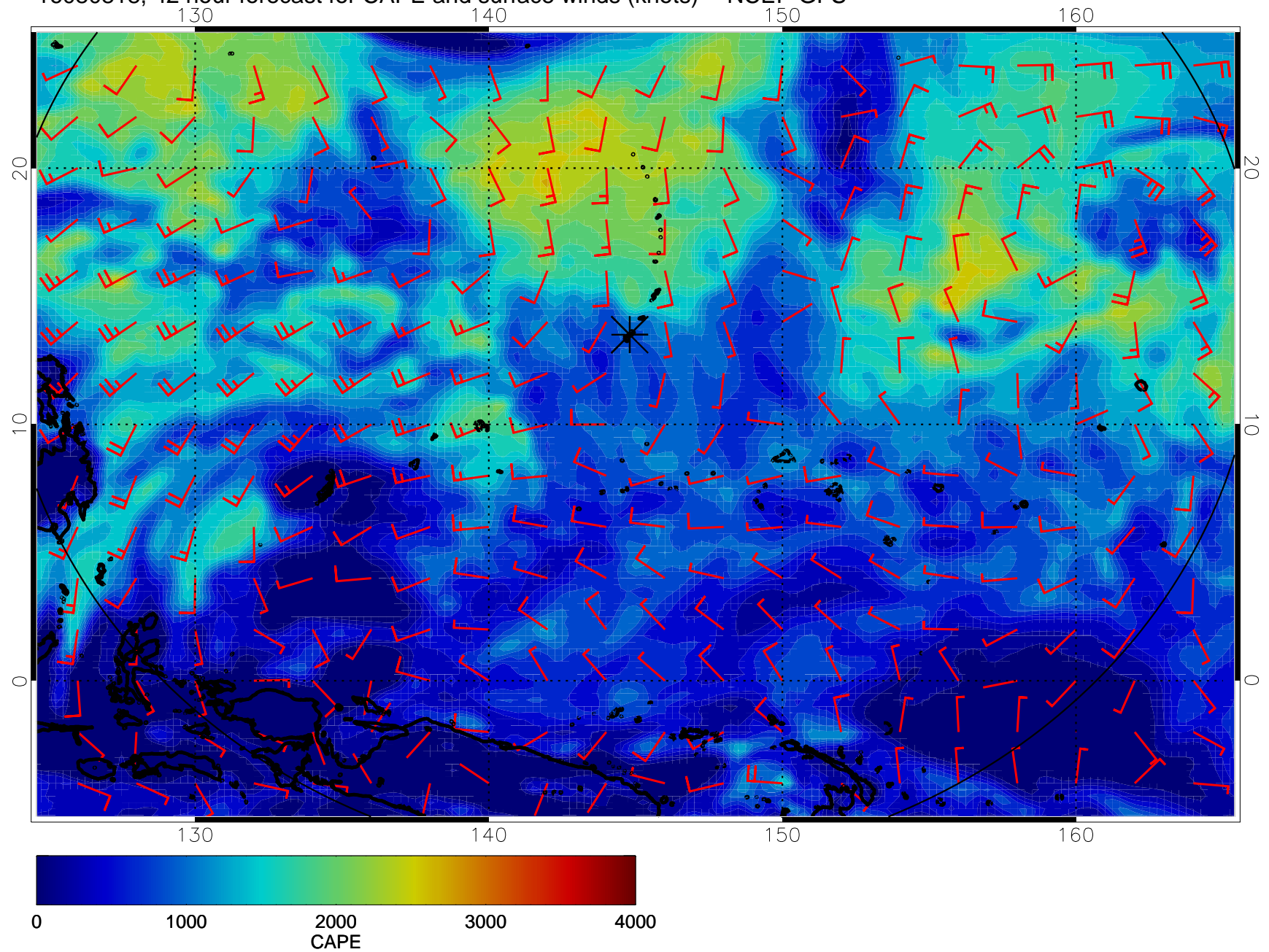
16080806, 30 hour forecast for CAPE and surface winds (knots) -- NCEP GFS



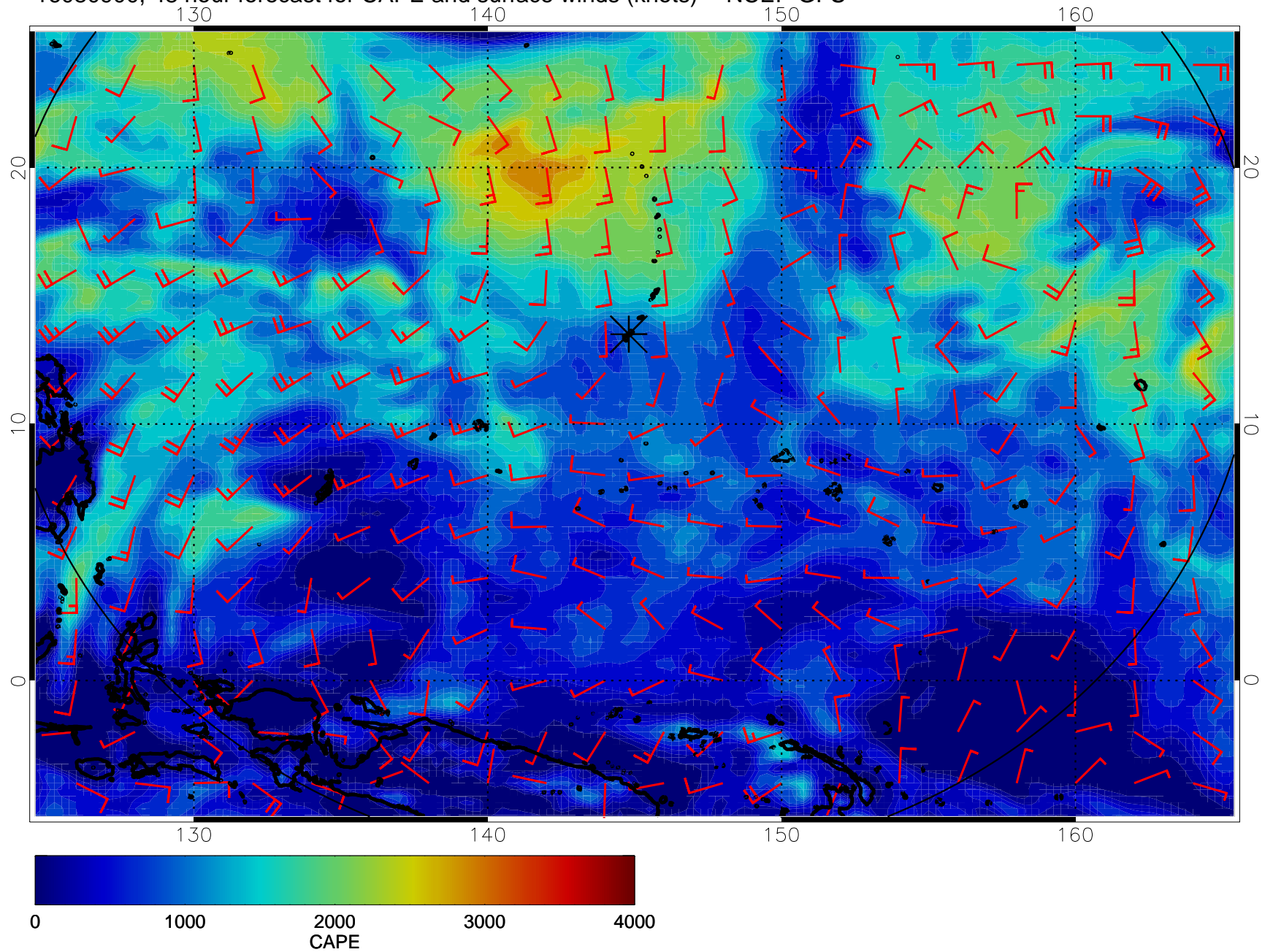
16080812, 36 hour forecast for CAPE and surface winds (knots) -- NCEP GFS



16080818, 42 hour forecast for CAPE and surface winds (knots) -- NCEP GFS

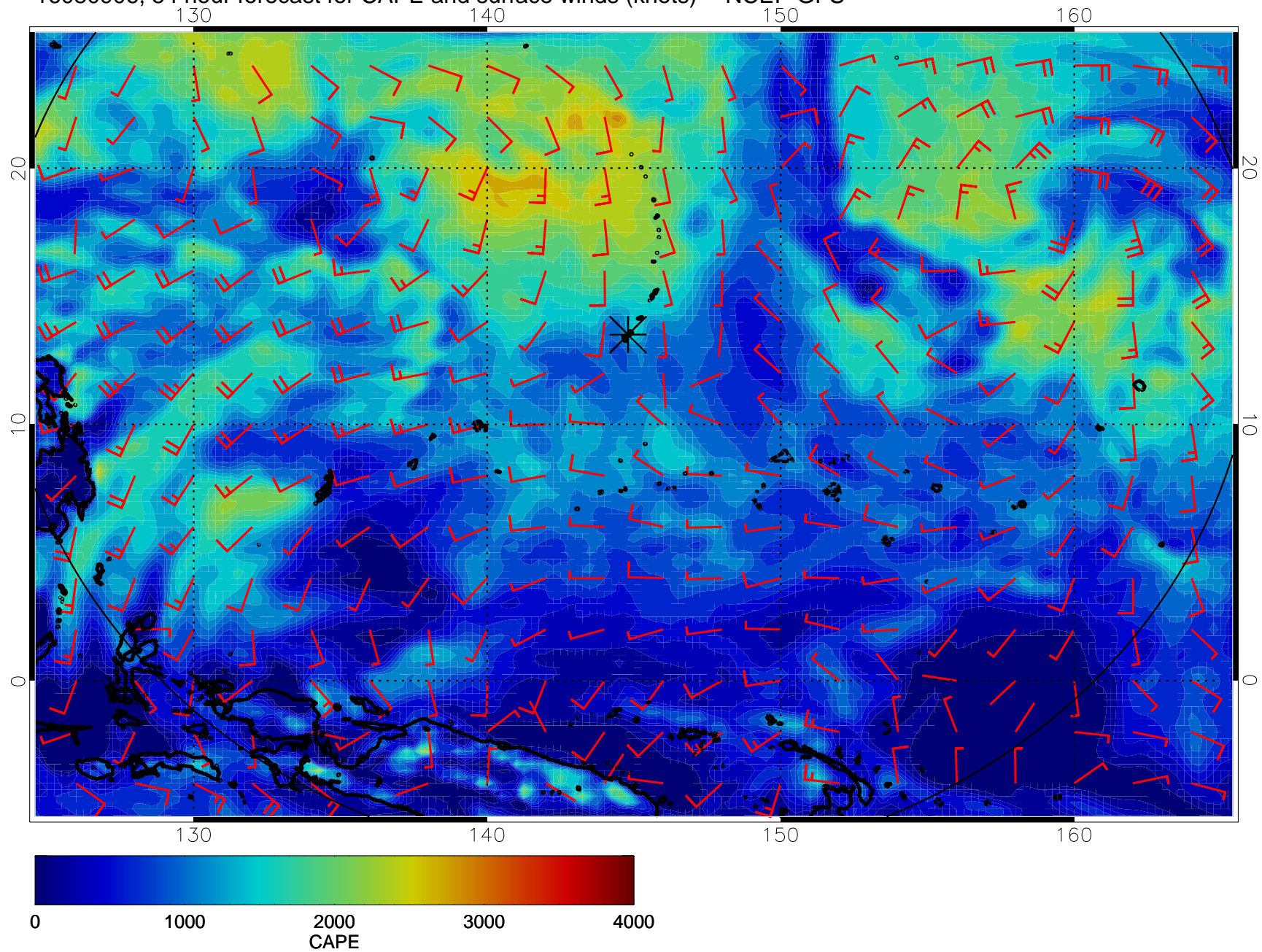


16080900, 48 hour forecast for CAPE and surface winds (knots) -- NCEP GFS

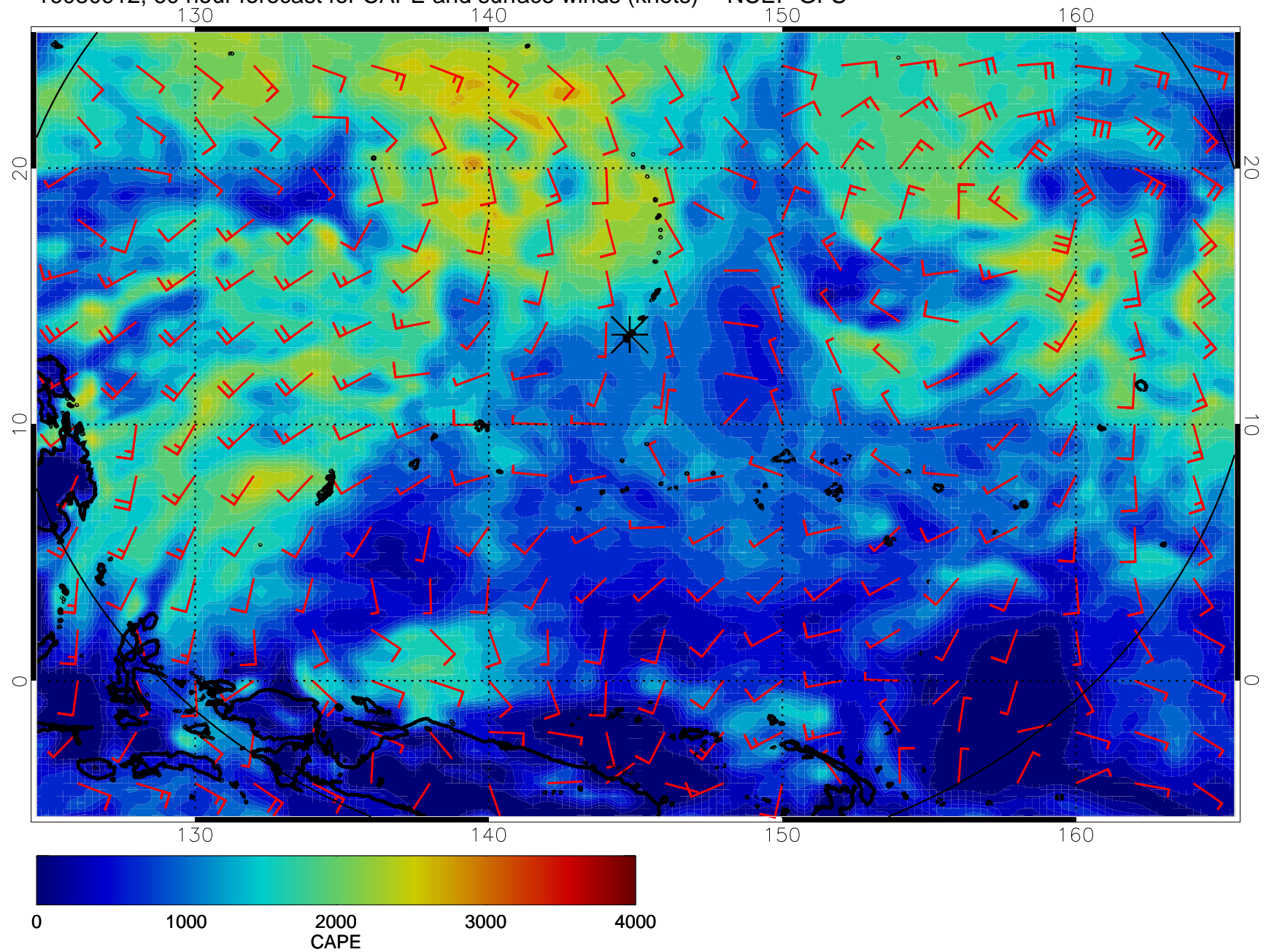




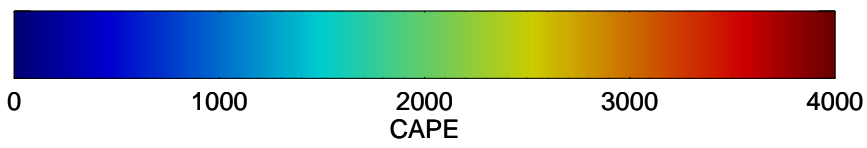
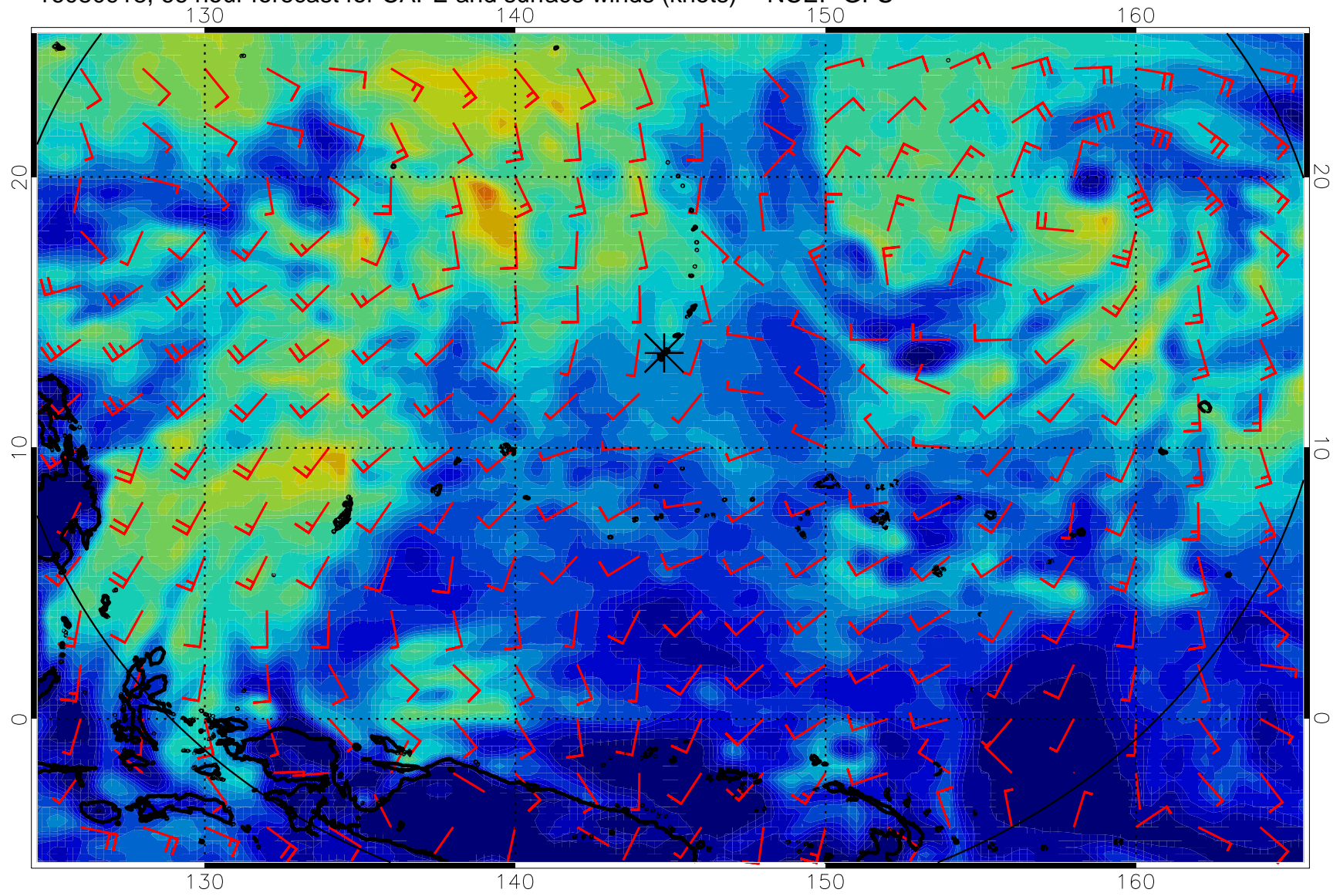
16080906, 54 hour forecast for CAPE and surface winds (knots) -- NCEP GFS



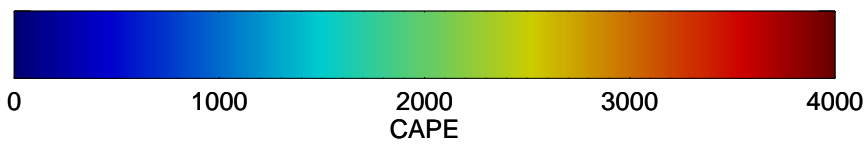
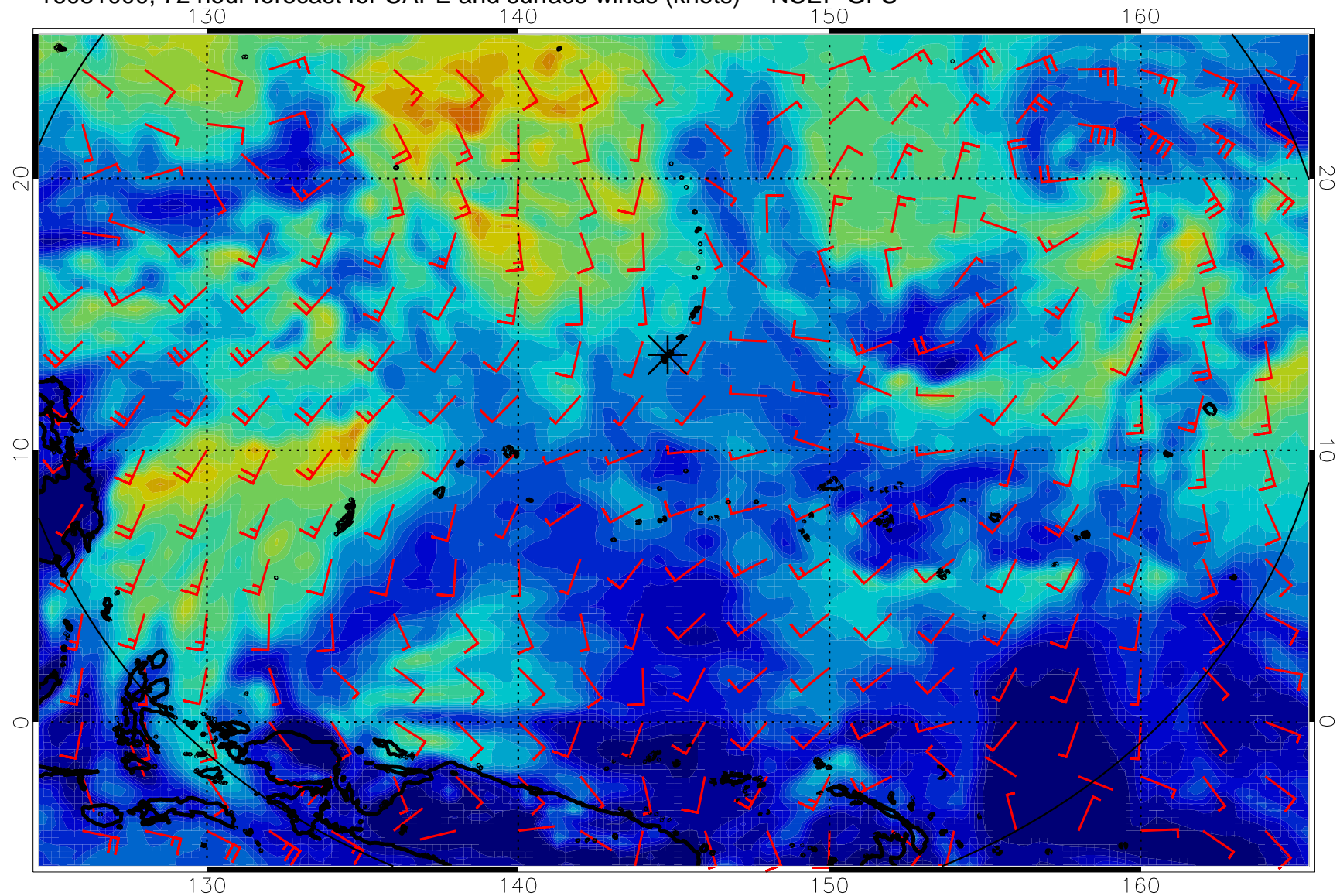
16080912, 60 hour forecast for CAPE and surface winds (knots) -- NCEP GFS



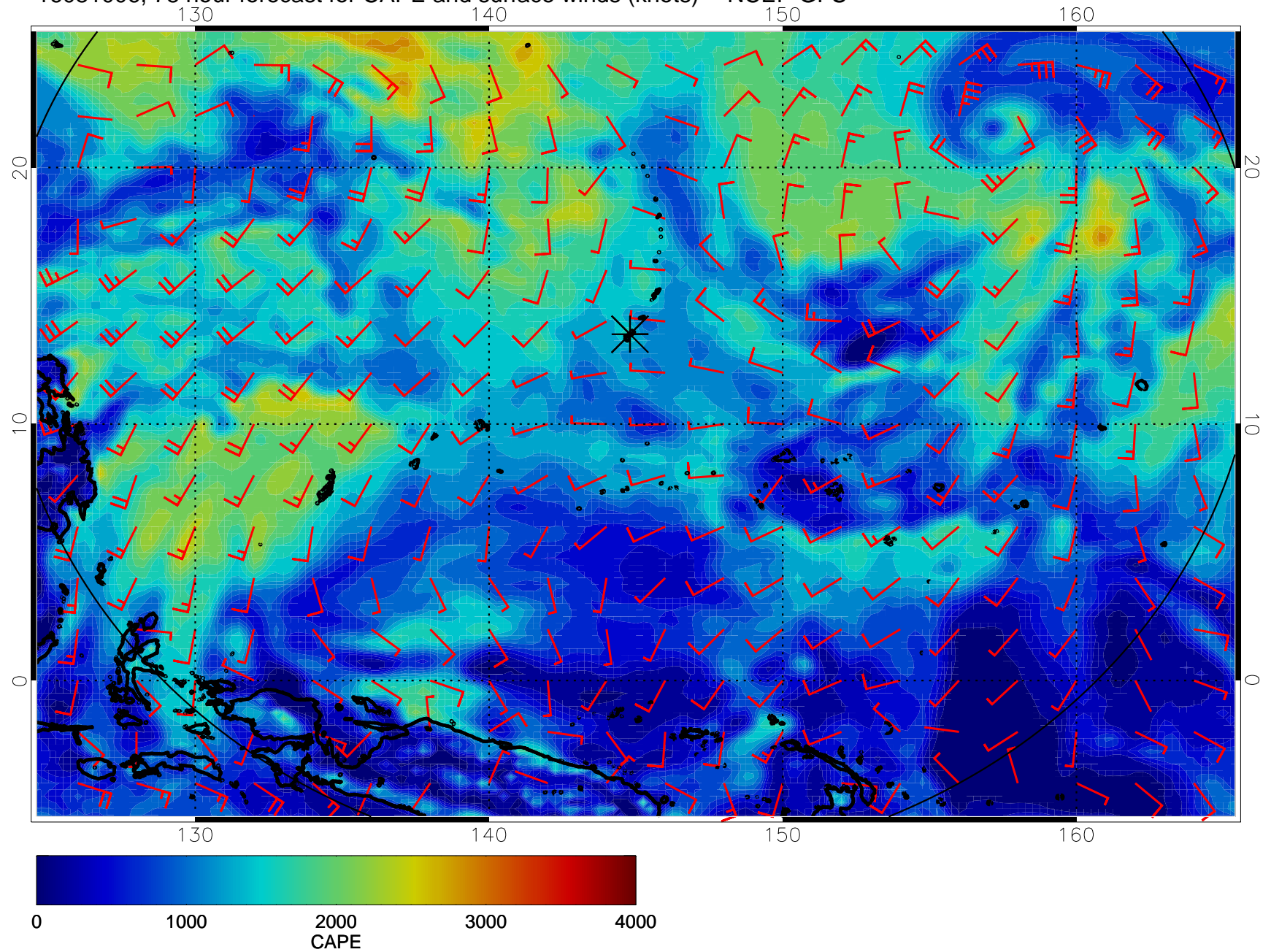
16080918, 66 hour forecast for CAPE and surface winds (knots) -- NCEP GFS



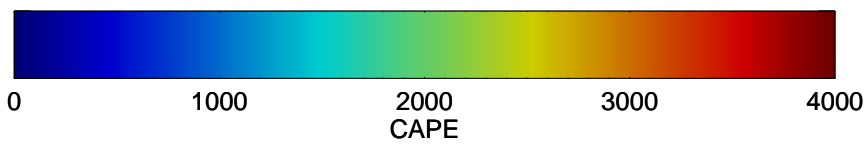
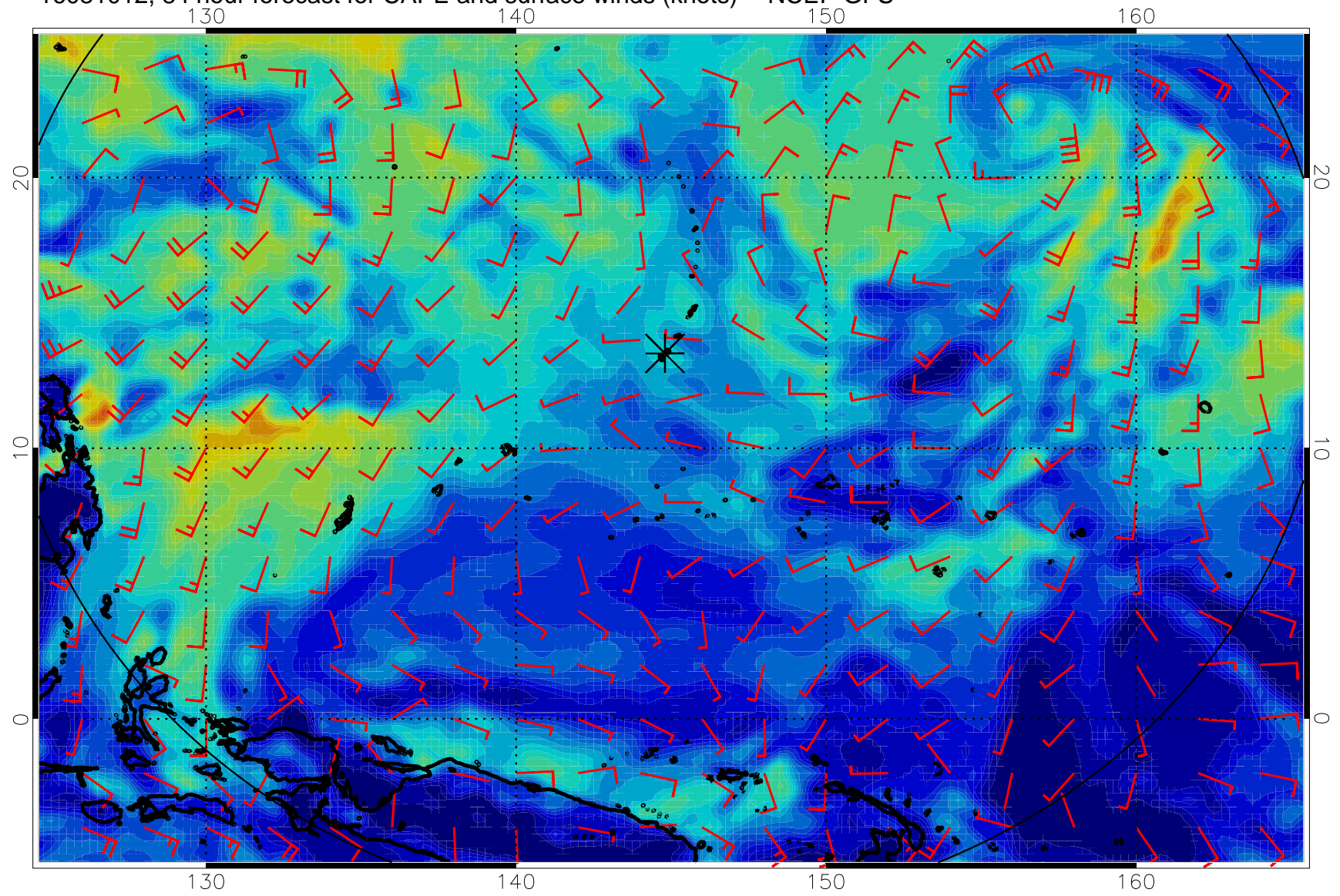
16081000, 72 hour forecast for CAPE and surface winds (knots) -- NCEP GFS



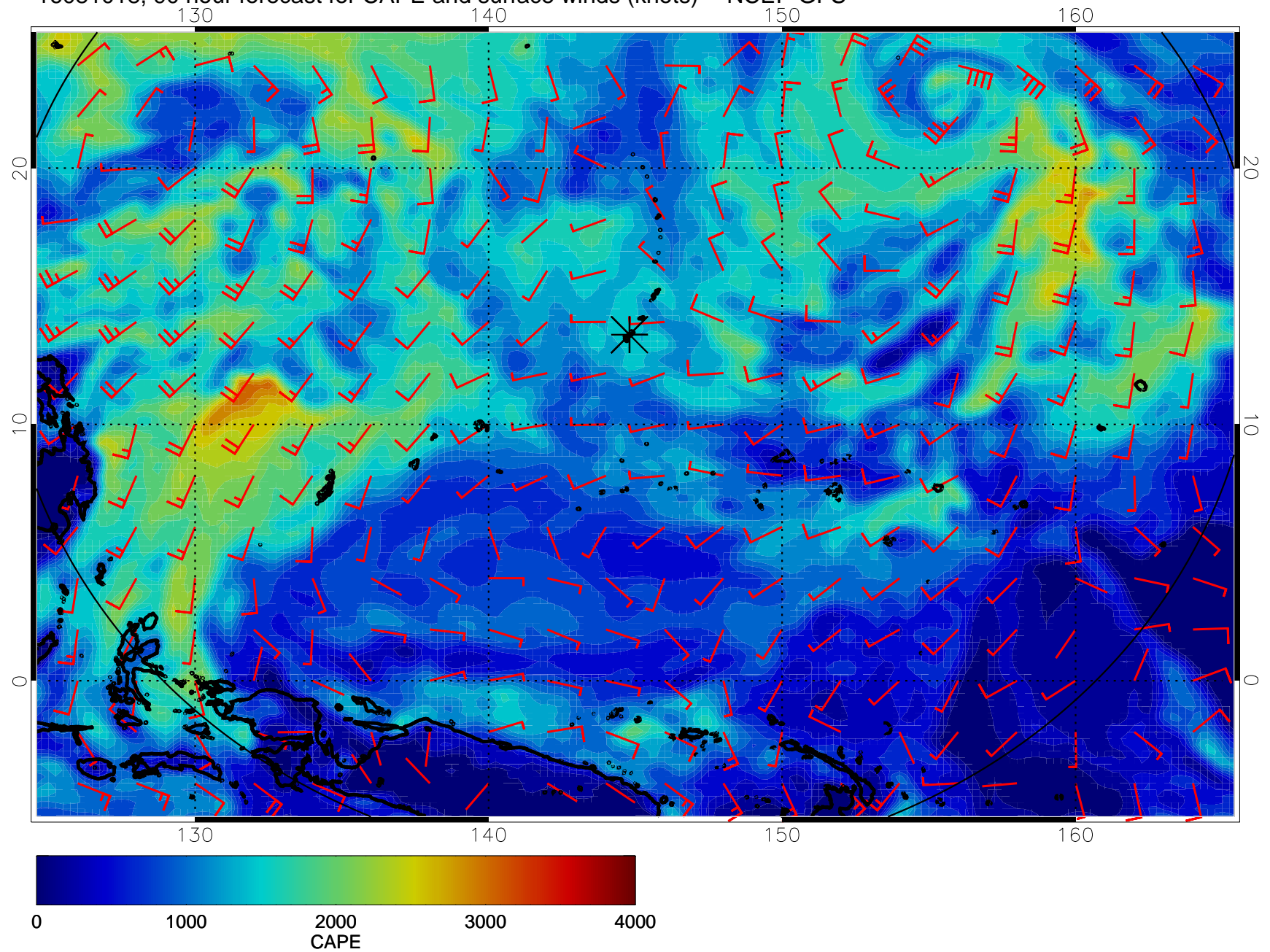
16081006, 78 hour forecast for CAPE and surface winds (knots) -- NCEP GFS



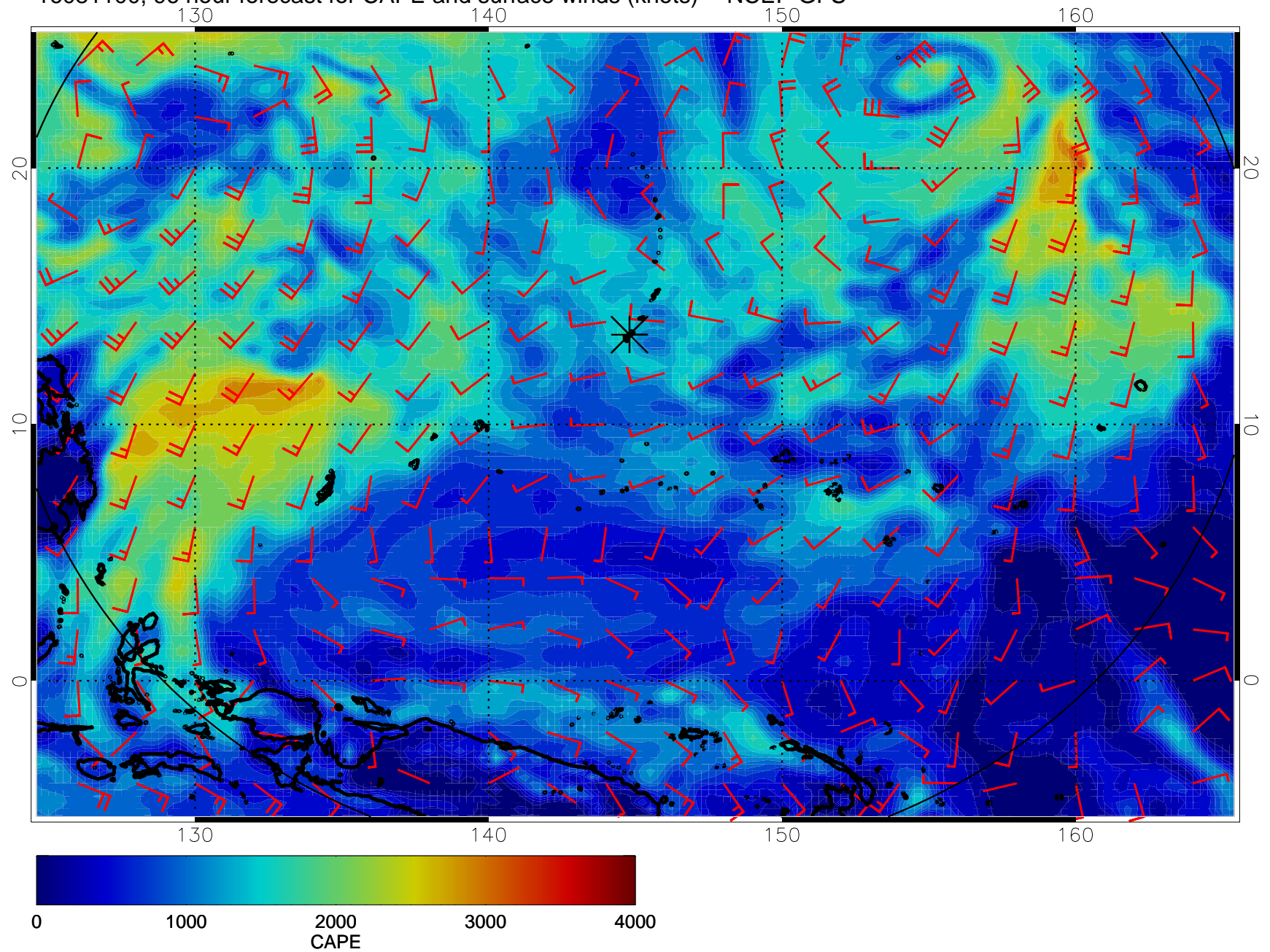
16081012, 84 hour forecast for CAPE and surface winds (knots) -- NCEP GFS



16081018, 90 hour forecast for CAPE and surface winds (knots) -- NCEP GFS

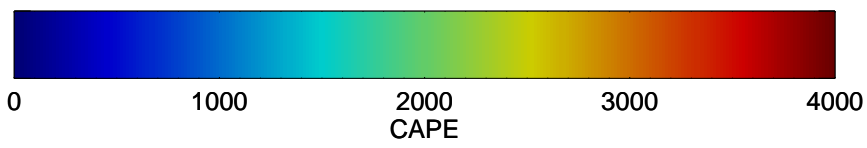
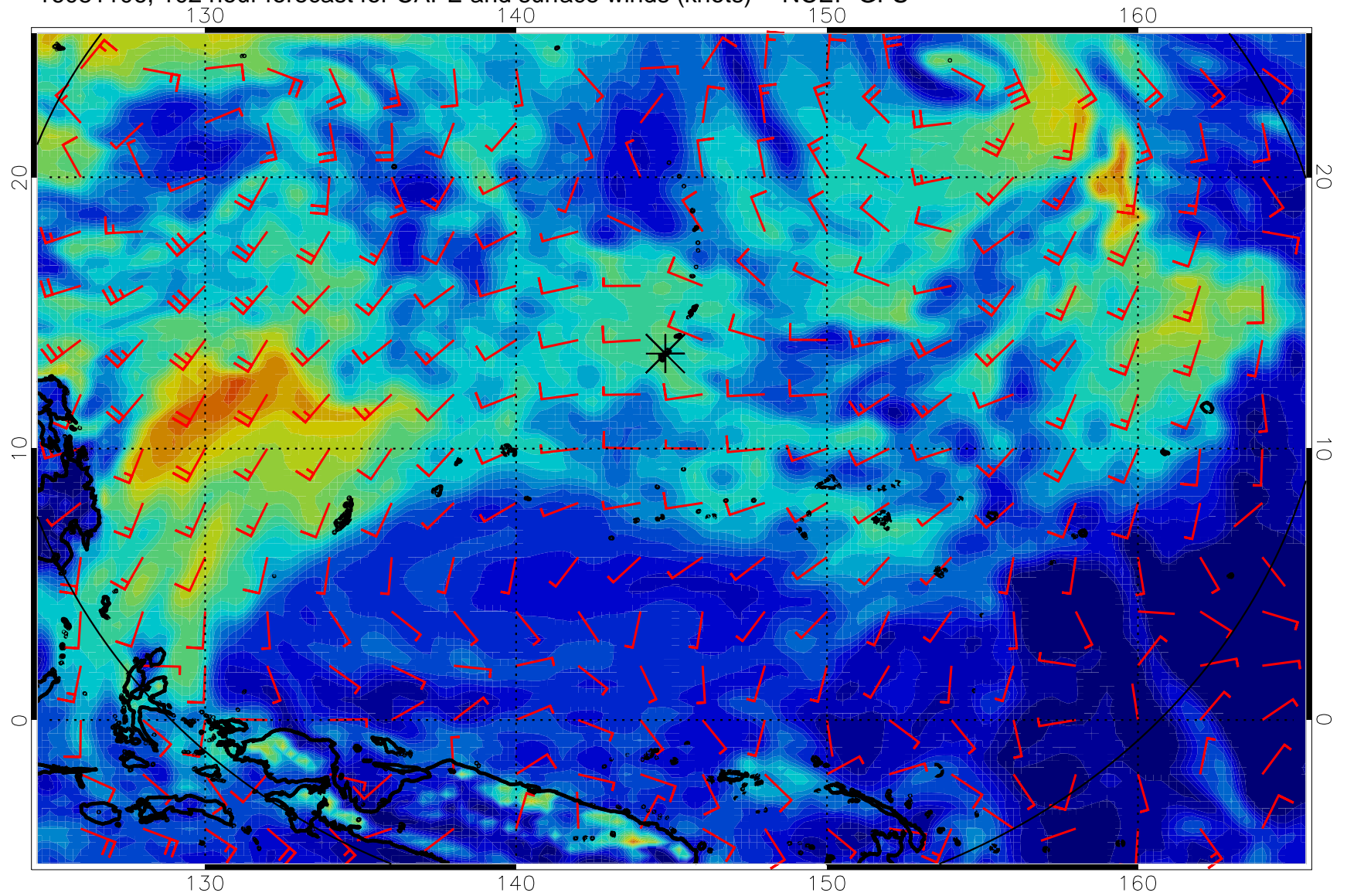


16081100, 96 hour forecast for CAPE and surface winds (knots) -- NCEP GFS

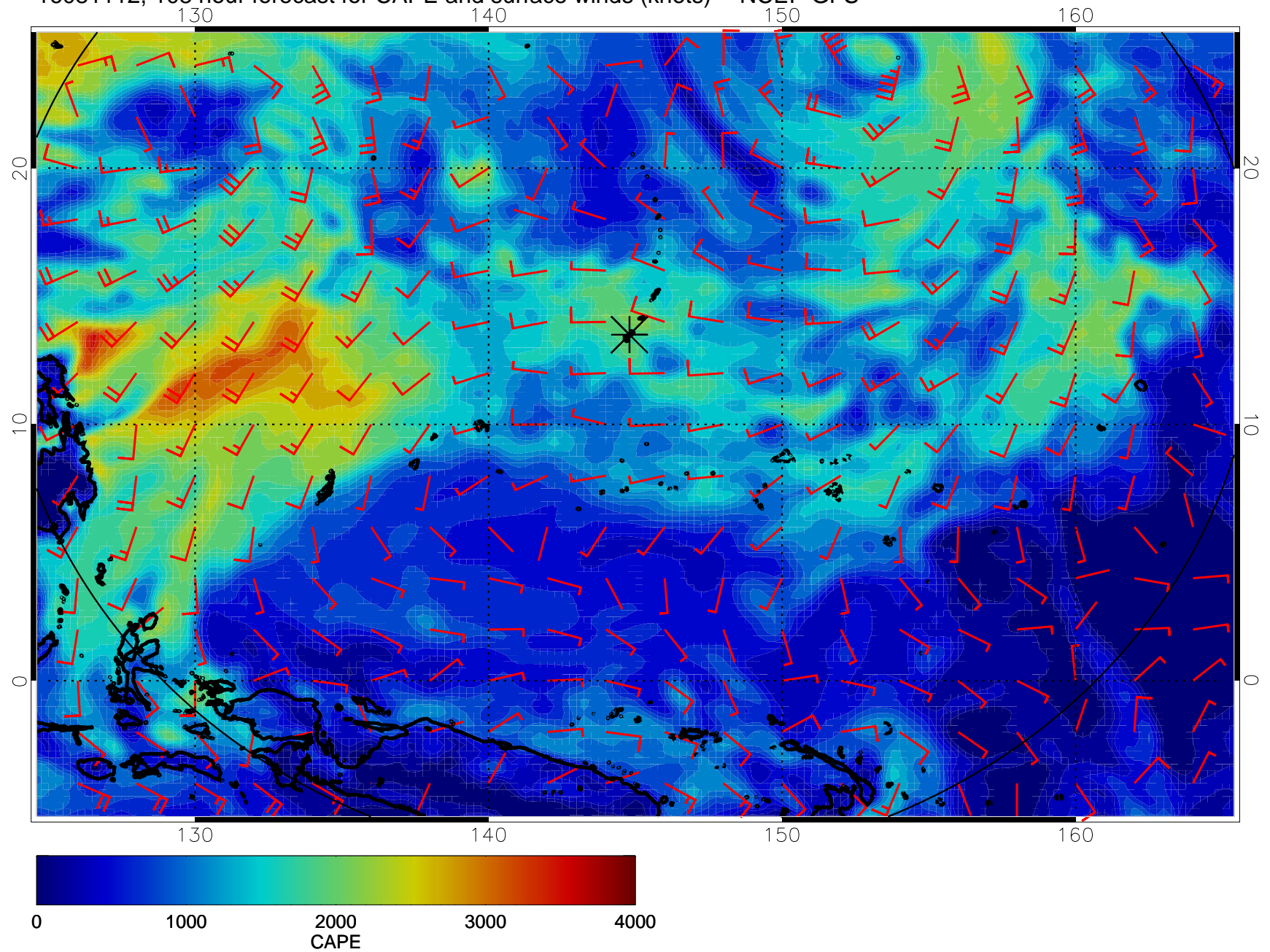




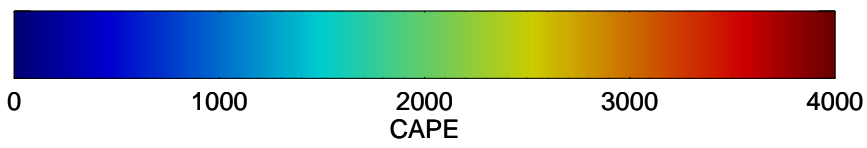
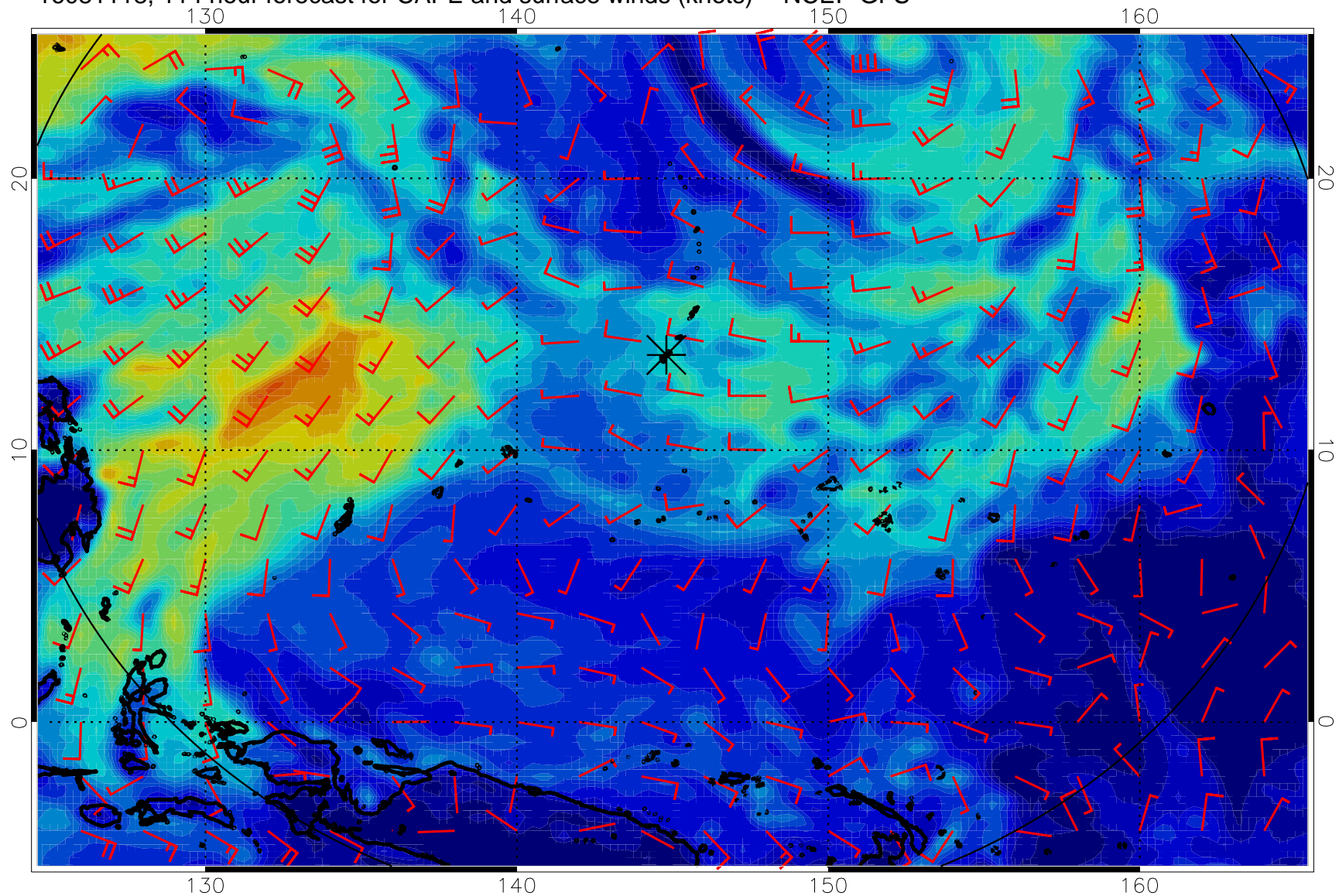
16081106, 102 hour forecast for CAPE and surface winds (knots) -- NCEP GFS



16081112, 108 hour forecast for CAPE and surface winds (knots) -- NCEP GFS



16081118, 114 hour forecast for CAPE and surface winds (knots) -- NCEP GFS



16081200, 120 hour forecast for CAPE and surface winds (knots) -- NCEP GFS

