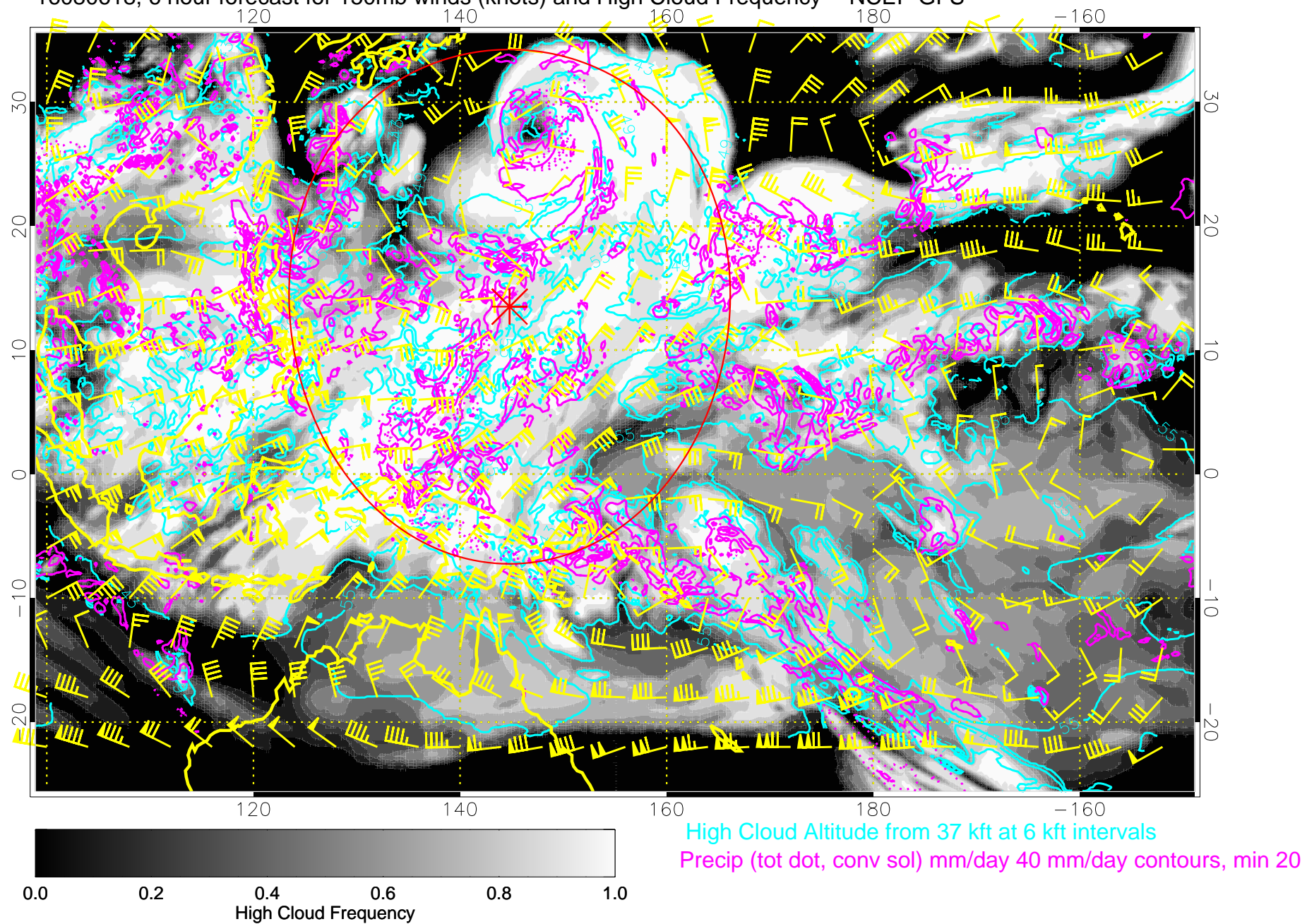


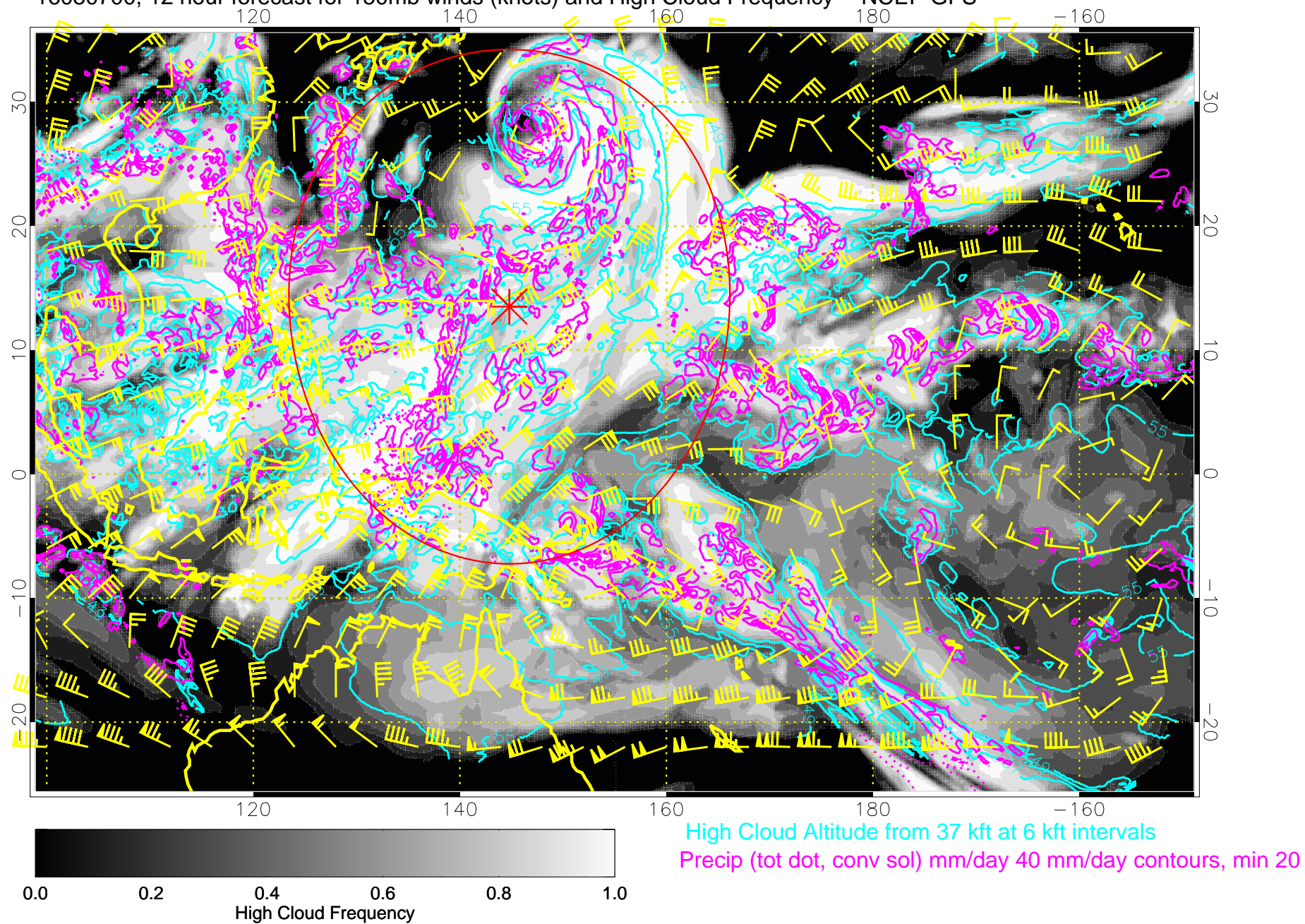
16080618, 6 hour forecast for 150mb winds (knots) and High Cloud Frequency -- NCEP GFS



Range ring of 2304 km



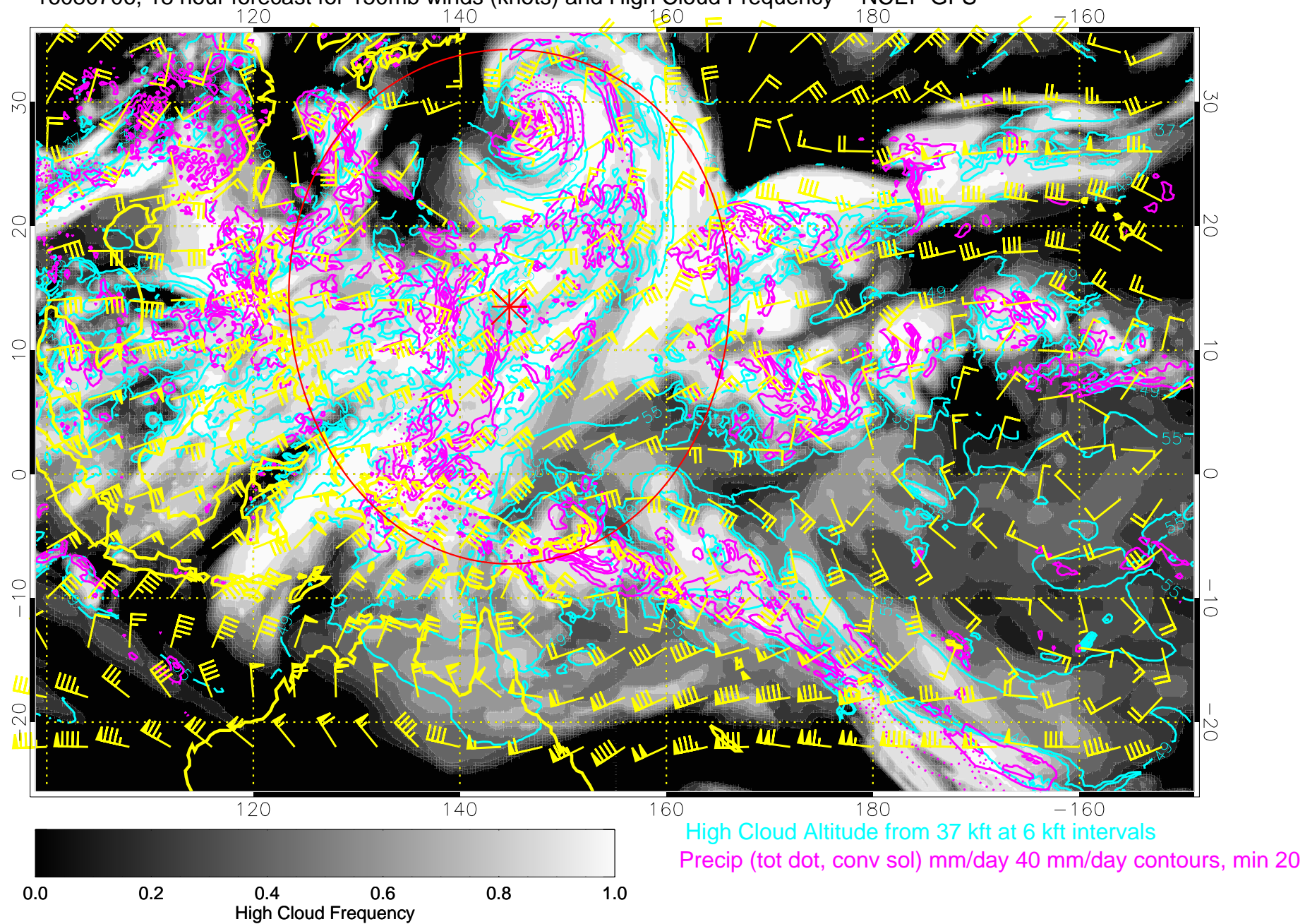
16080700, 12 hour forecast for 150mb winds (knots) and High Cloud Frequency -- NCEP GFS



Range ring of 2304 km



16080706, 18 hour forecast for 150mb winds (knots) and High Cloud Frequency -- NCEP GFS

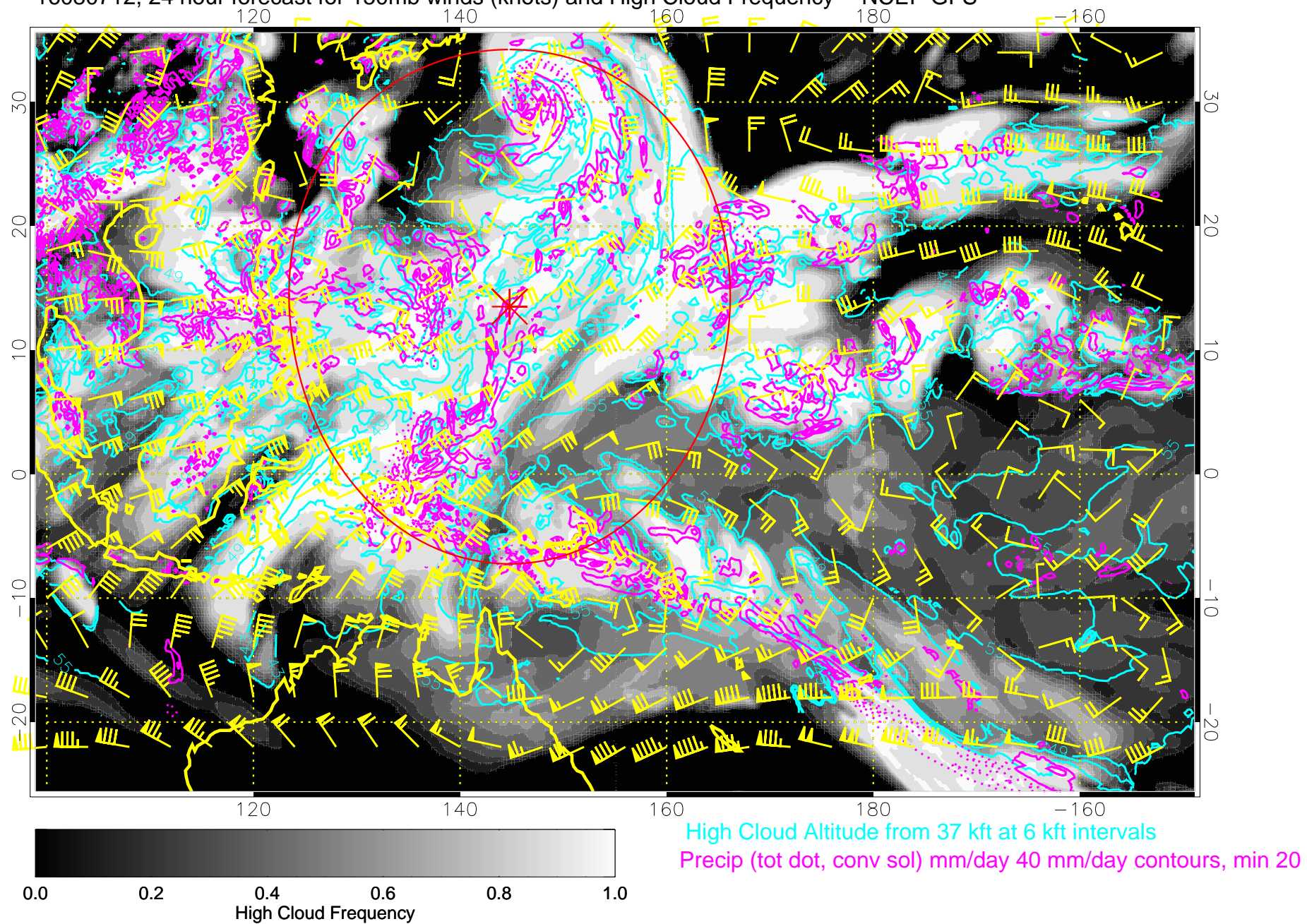


High Cloud Altitude from 37 kft at 6 kft intervals  
Precip (tot dot, conv sol) mm/day 40 mm/day contours, min 20

Range ring of 2304 km



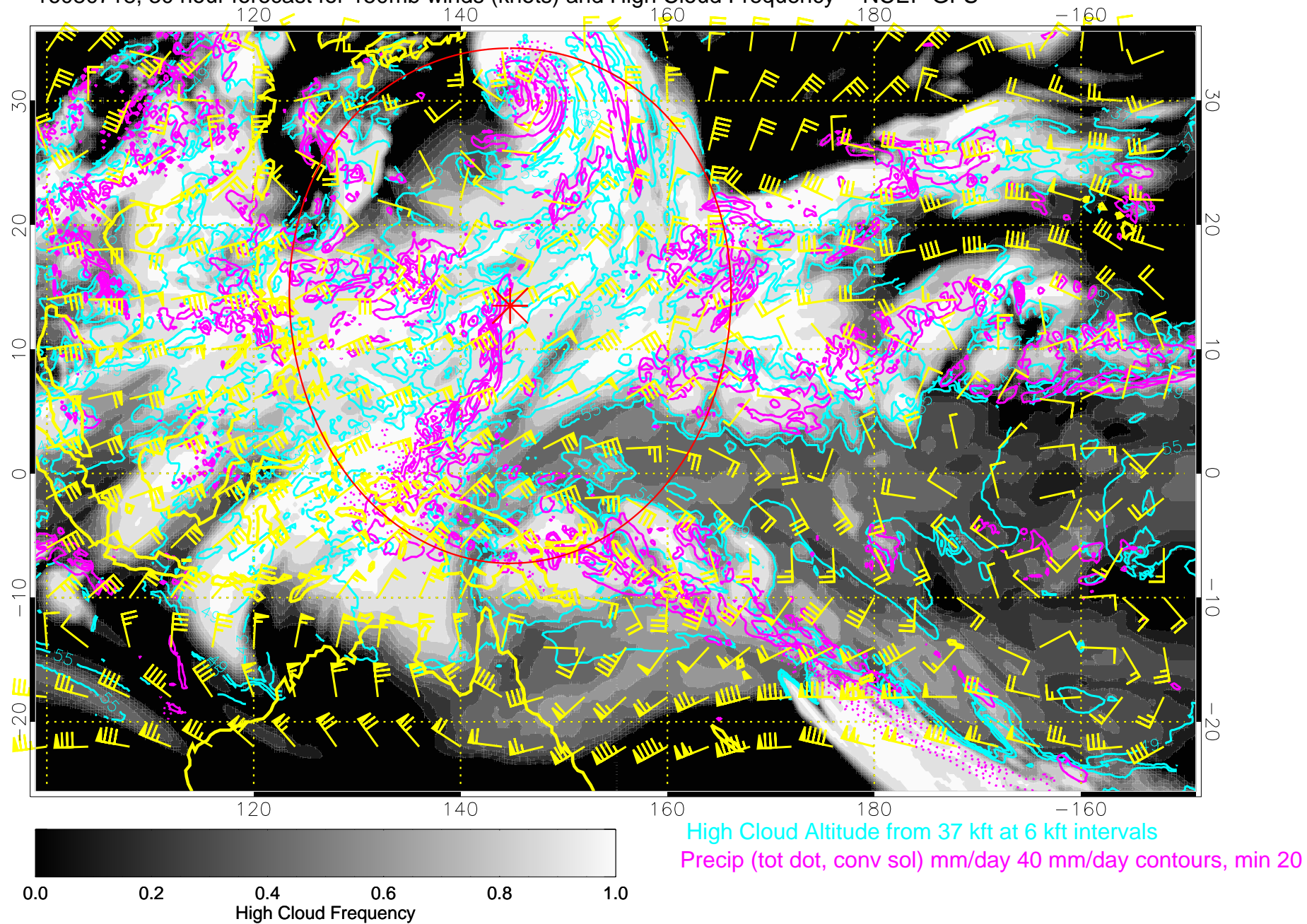
16080712, 24 hour forecast for 150mb winds (knots) and High Cloud Frequency -- NCEP GFS



Range ring of 2304 km



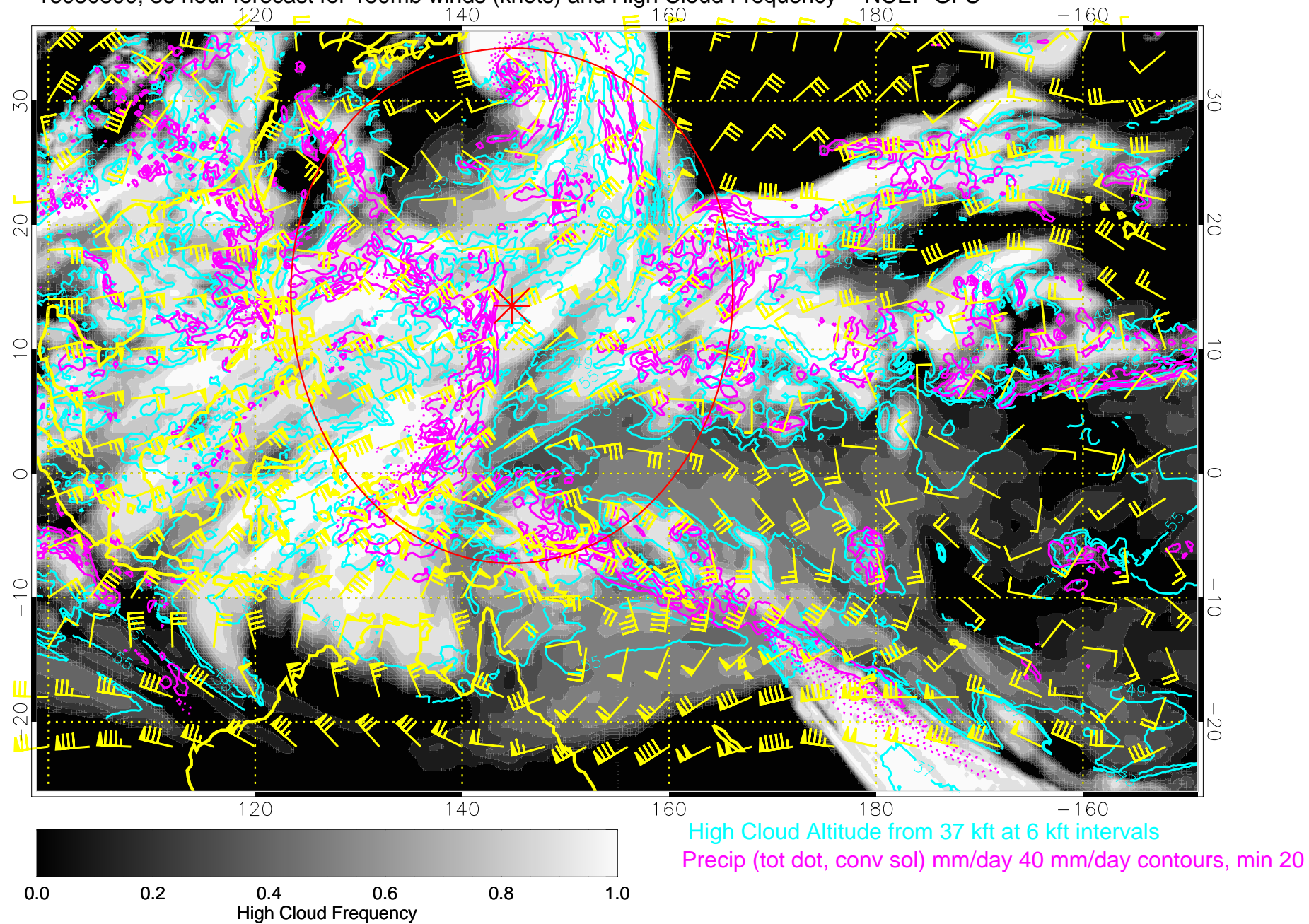
16080718, 30 hour forecast for 150mb winds (knots) and High Cloud Frequency -- NCEP GFS



Range ring of 2304 km



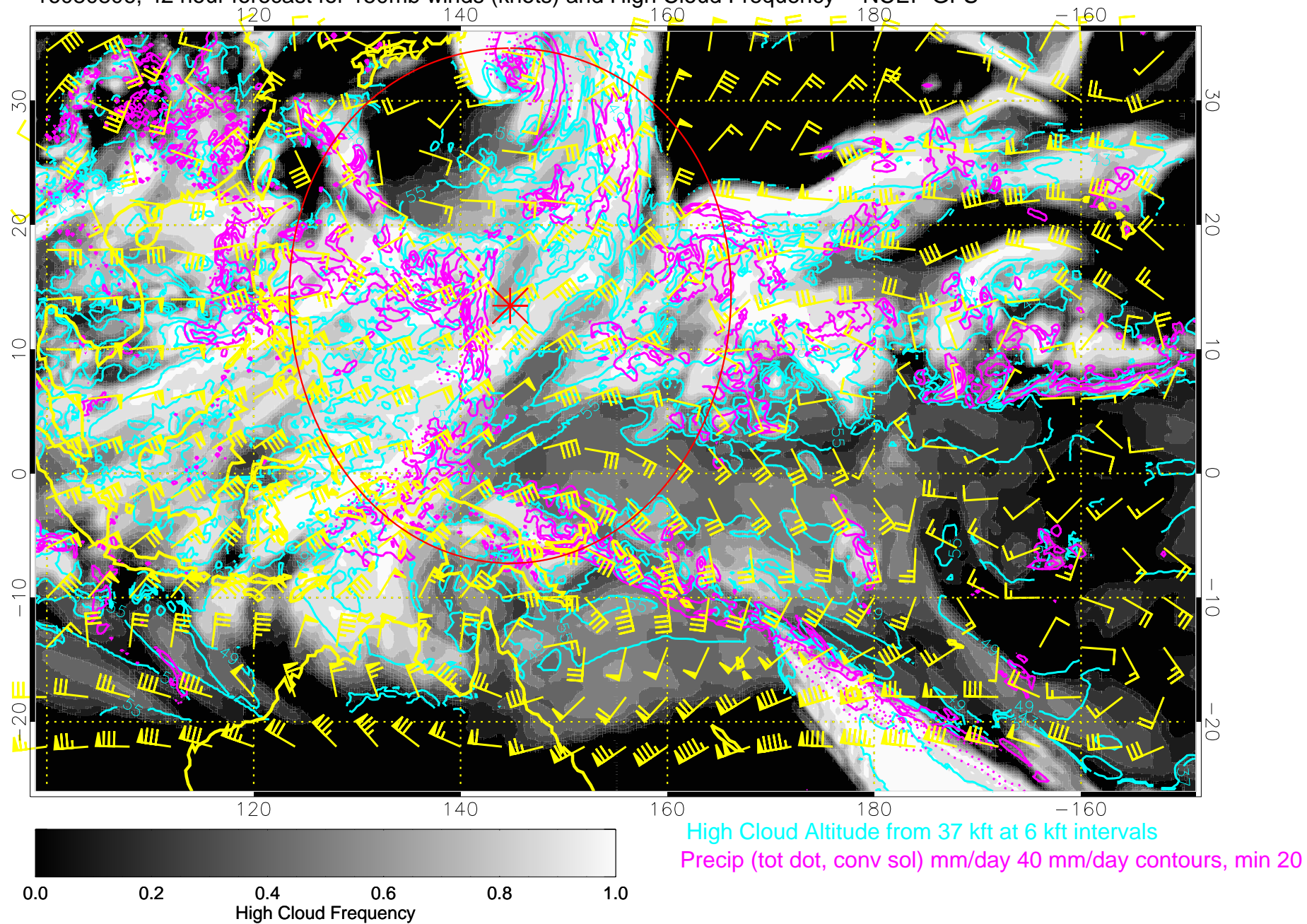
16080800, 36 hour forecast for 150mb winds (knots) and High Cloud Frequency -- NCEP GFS



Range ring of 2304 km



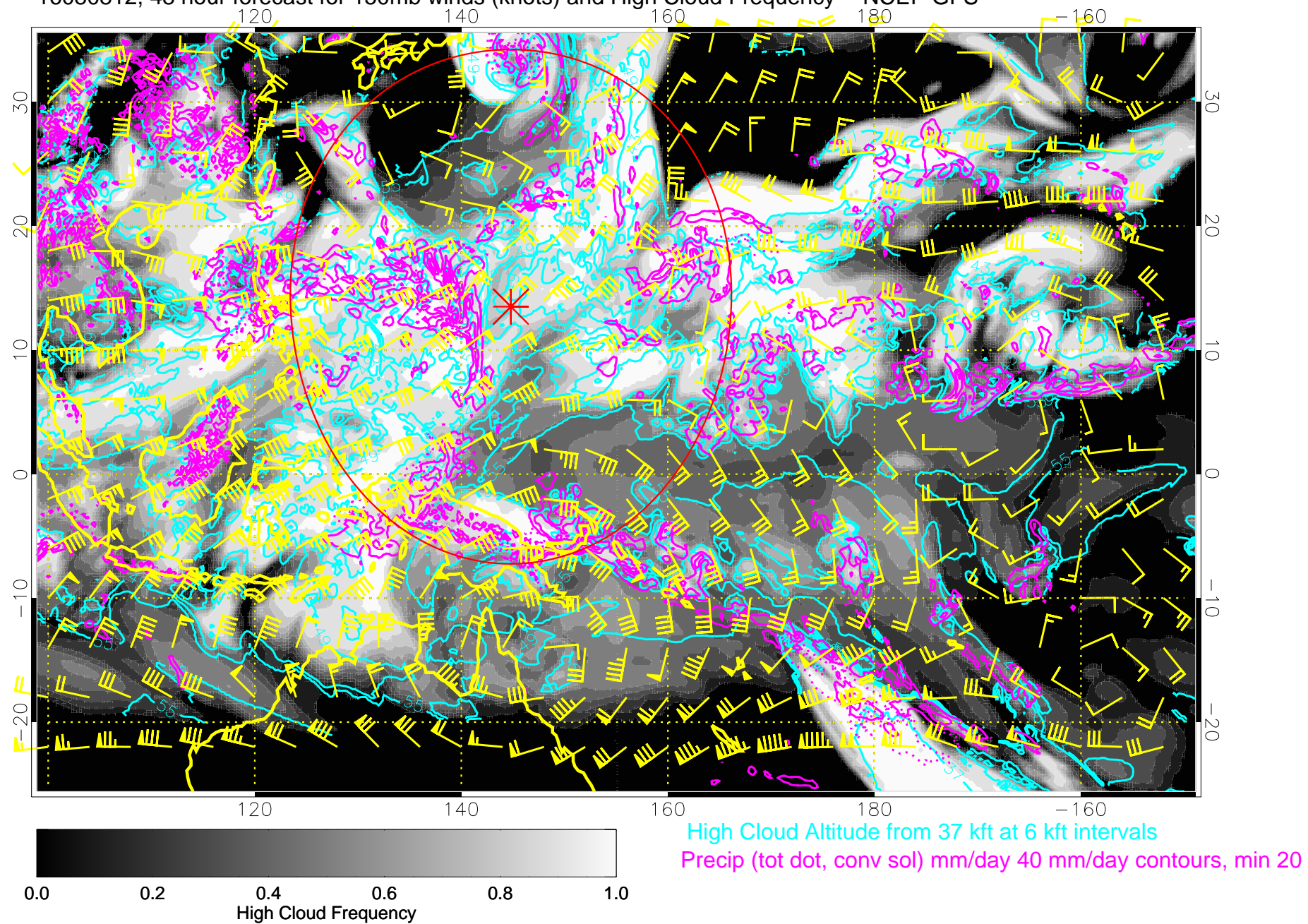
16080806, 42 hour forecast for 150mb winds (knots) and High Cloud Frequency -- NCEP GFS



Range ring of 2304 km



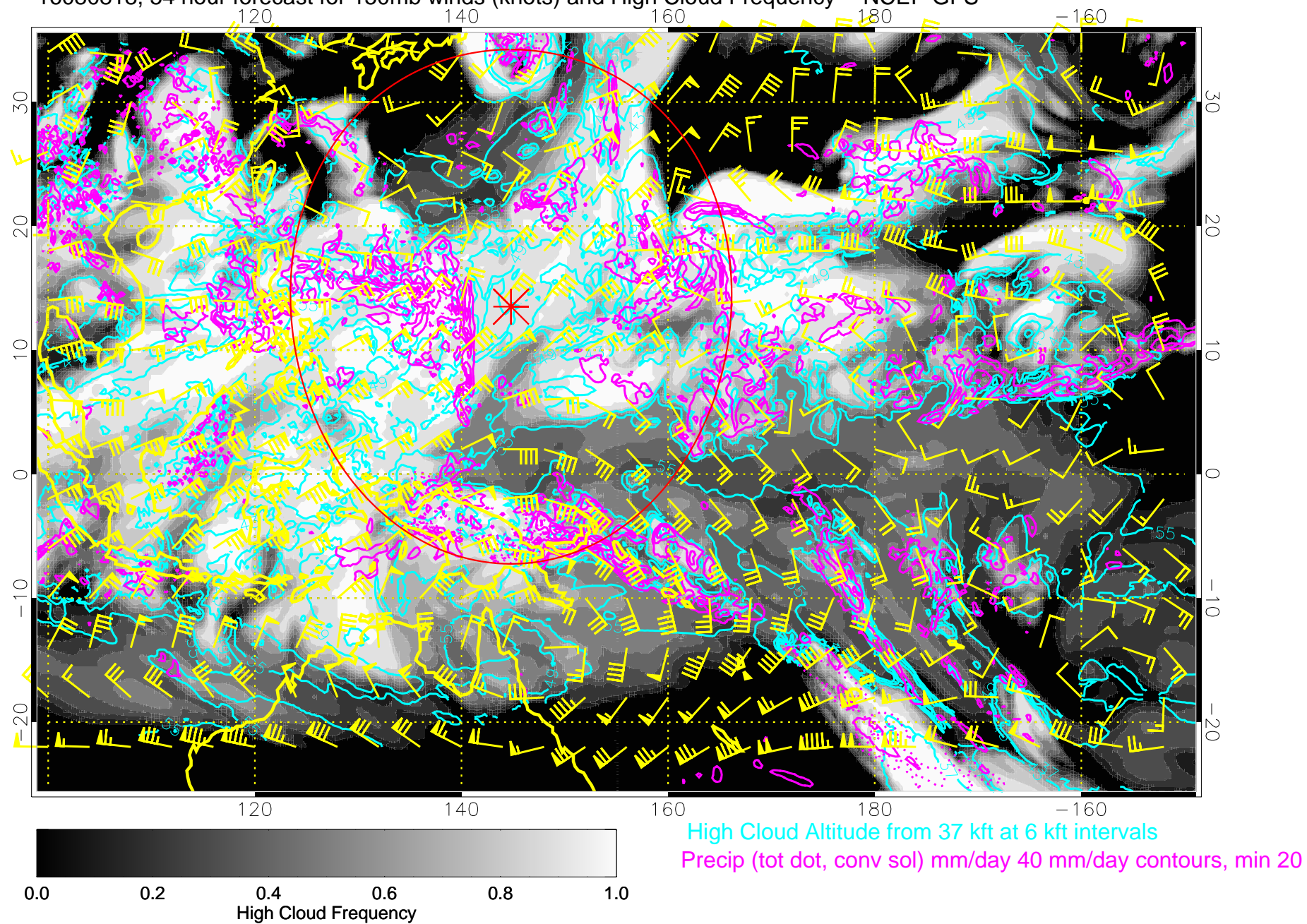
16080812, 48 hour forecast for 150mb winds (knots) and High Cloud Frequency -- NCEP GFS



Range ring of 2304 km



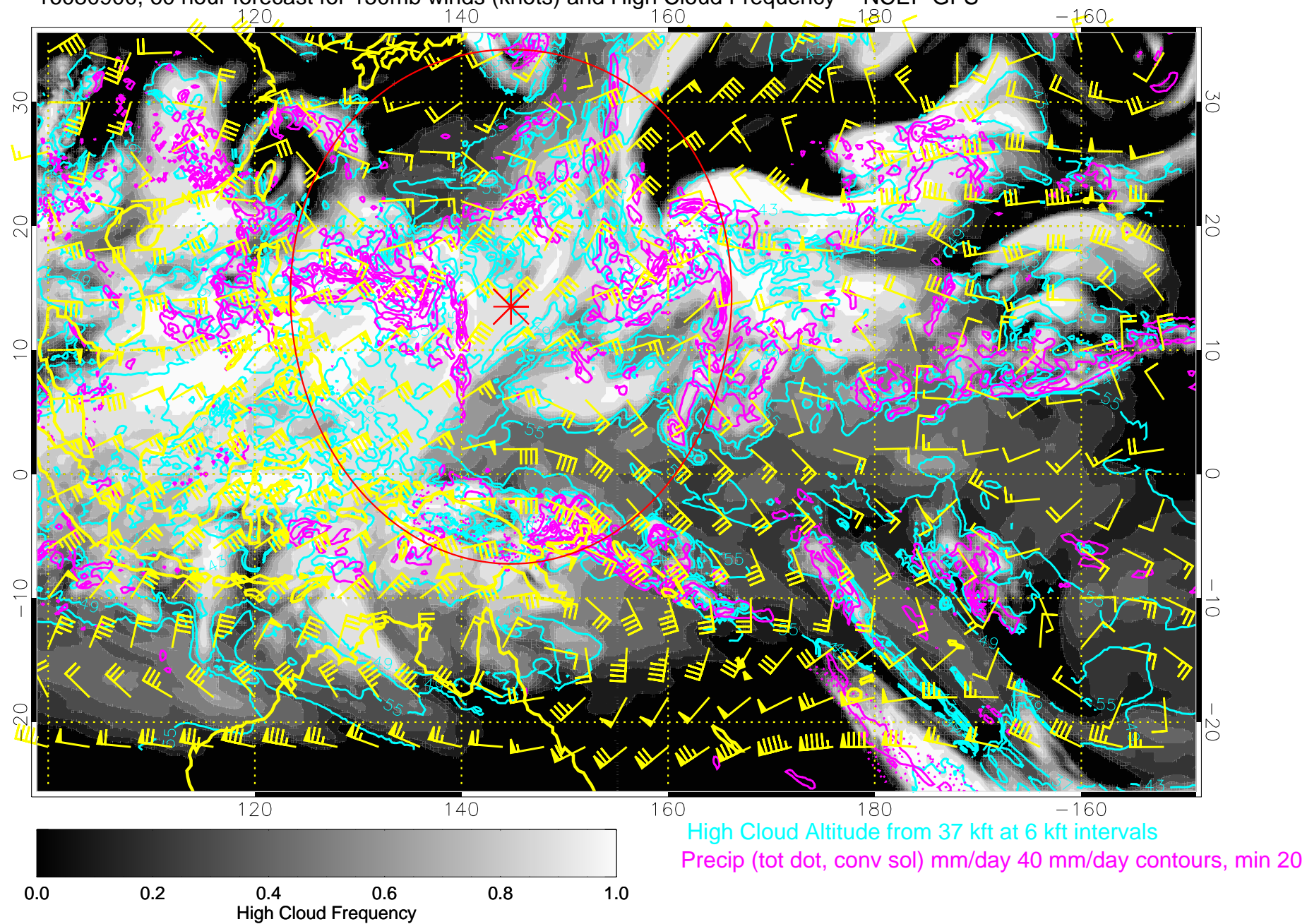
16080818, 54 hour forecast for 150mb winds (knots) and High Cloud Frequency -- NCEP GFS



Range ring of 2304 km



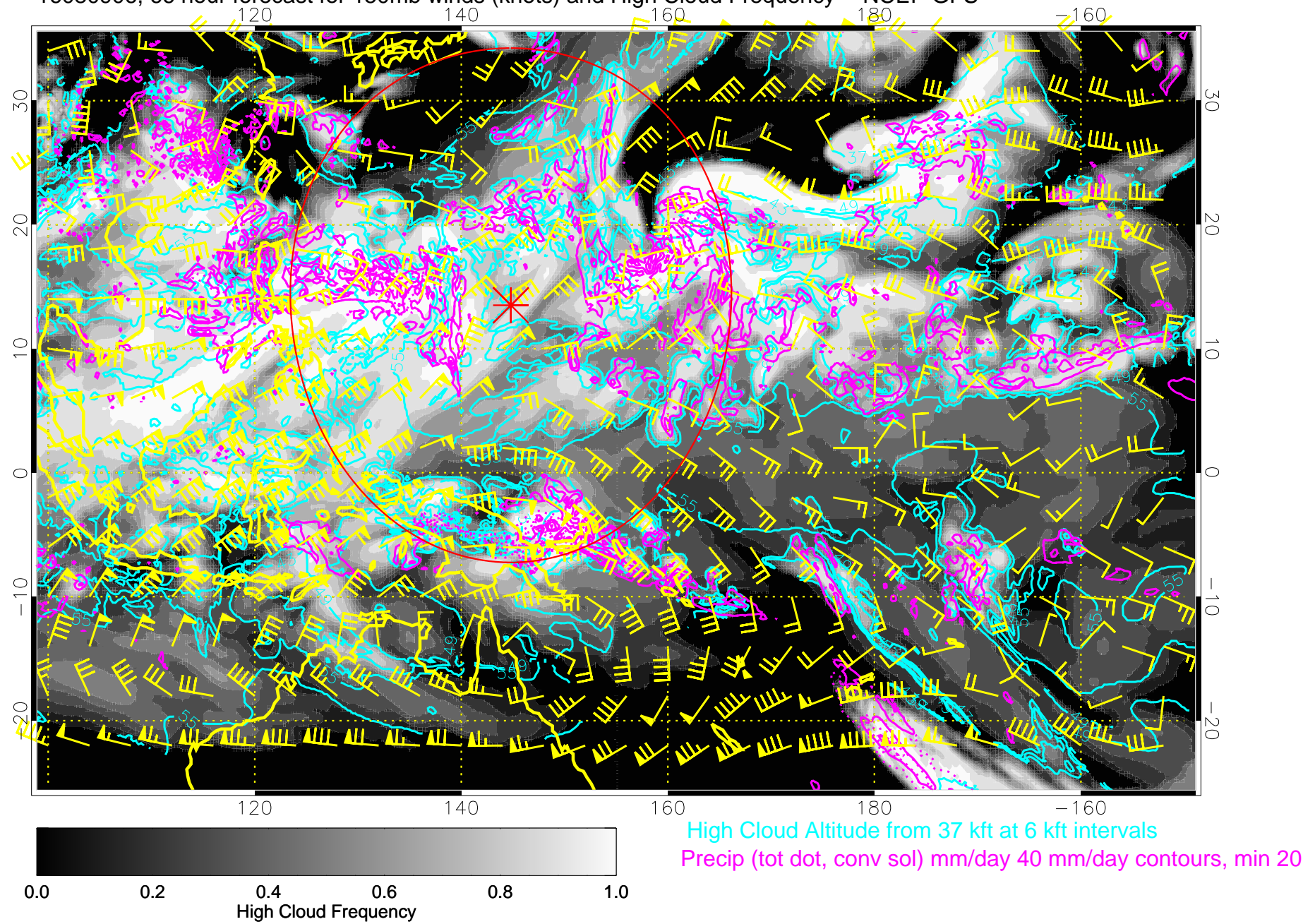
16080900, 60 hour forecast for 150mb winds (knots) and High Cloud Frequency -- NCEP GFS



Range ring of 2304 km



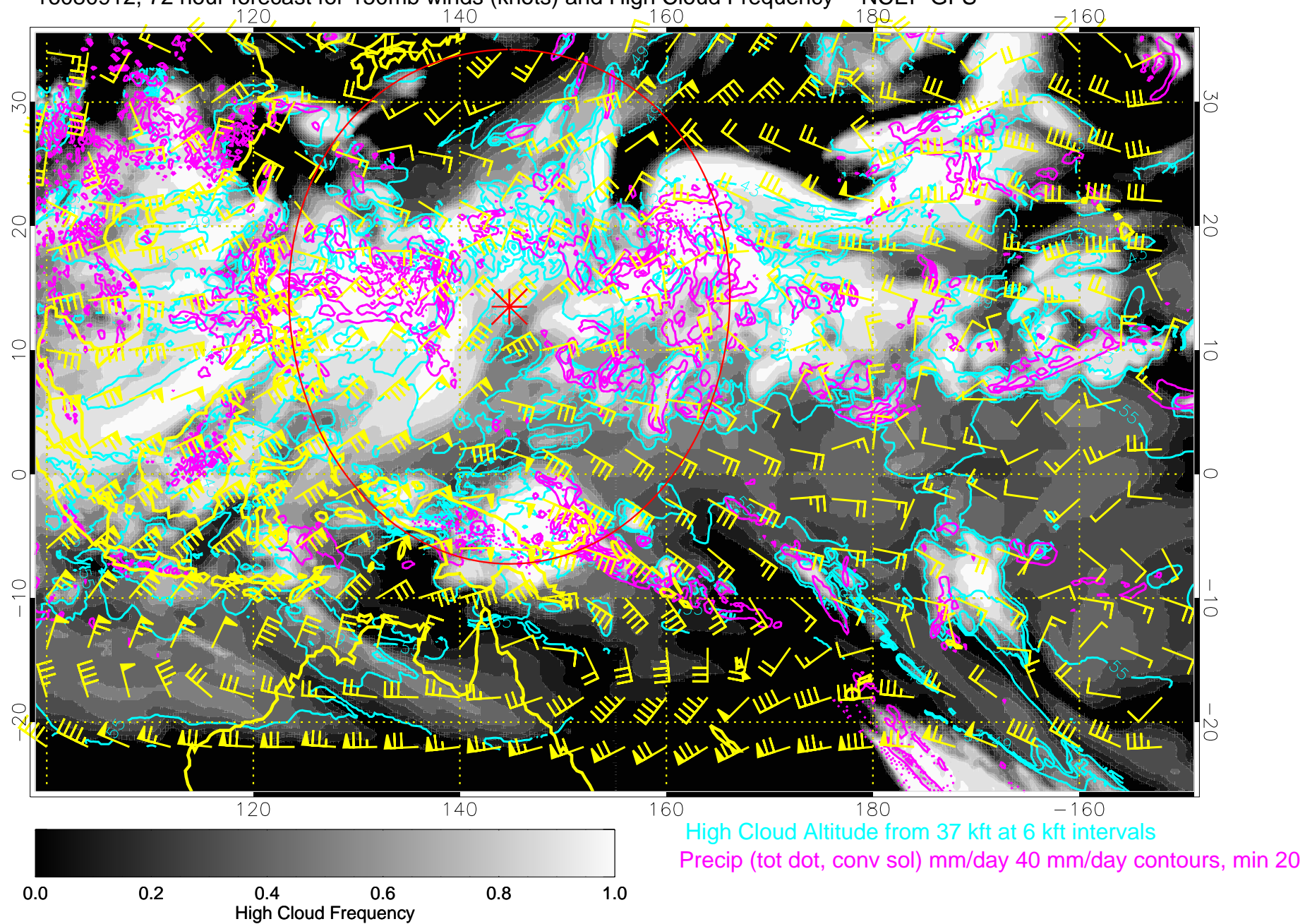
16080906, 66 hour forecast for 150mb winds (knots) and High Cloud Frequency -- NCEP GFS



Range ring of 2304 km



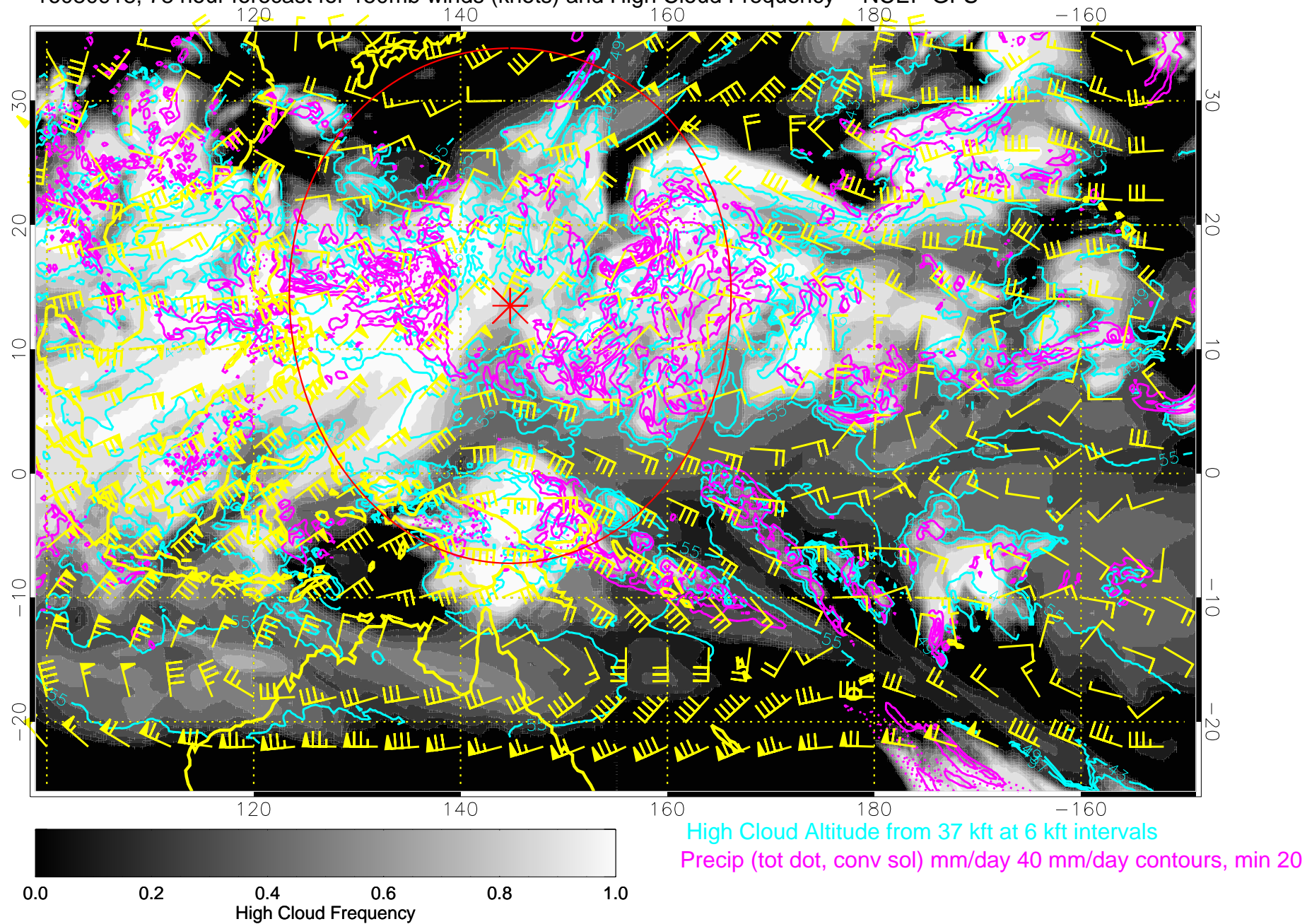
16080912, 72 hour forecast for 150mb winds (knots) and High Cloud Frequency -- NCEP GFS



Range ring of 2304 km



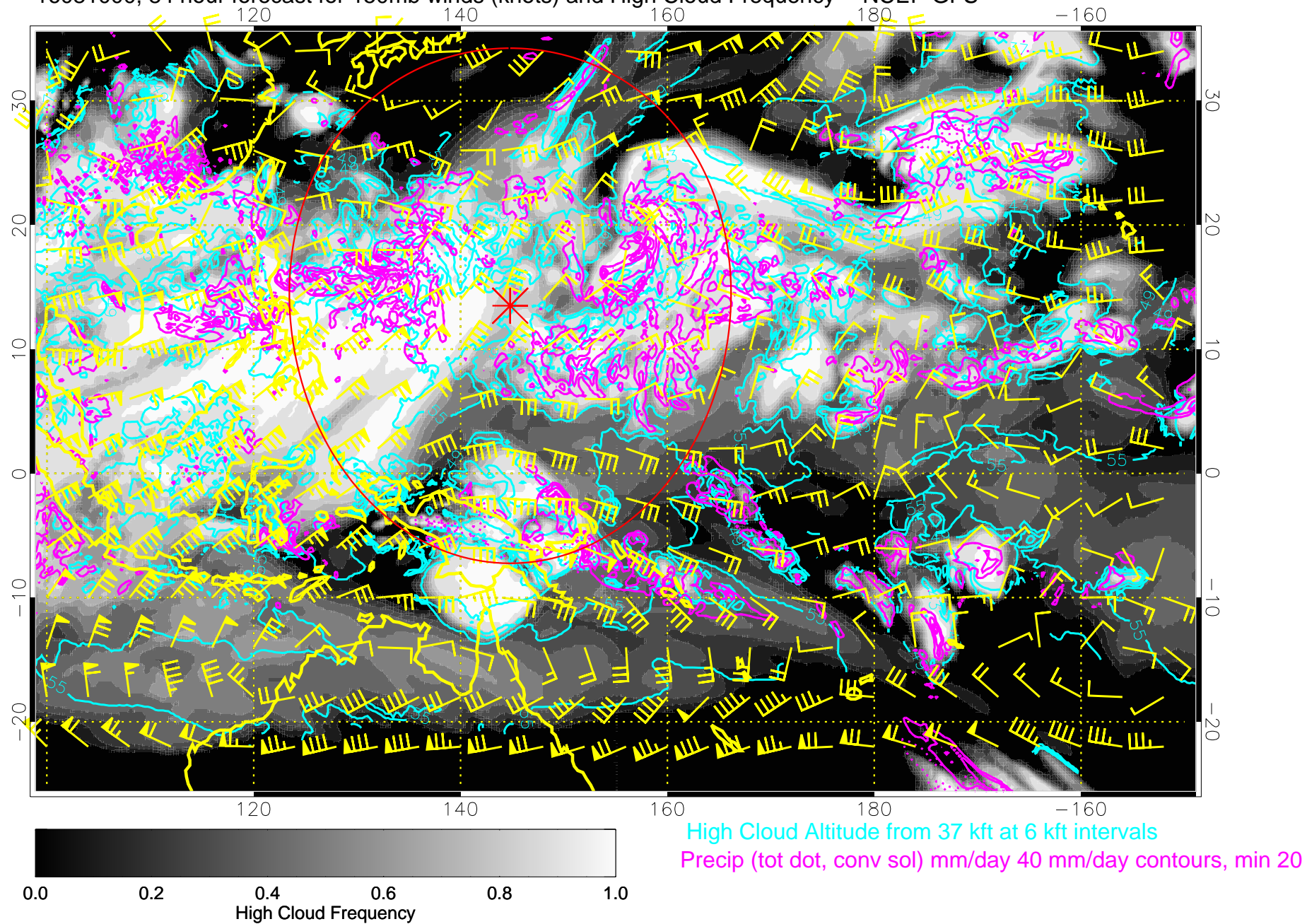
16080918, 78 hour forecast for 150mb winds (knots) and High Cloud Frequency -- NCEP GFS



Range ring of 2304 km



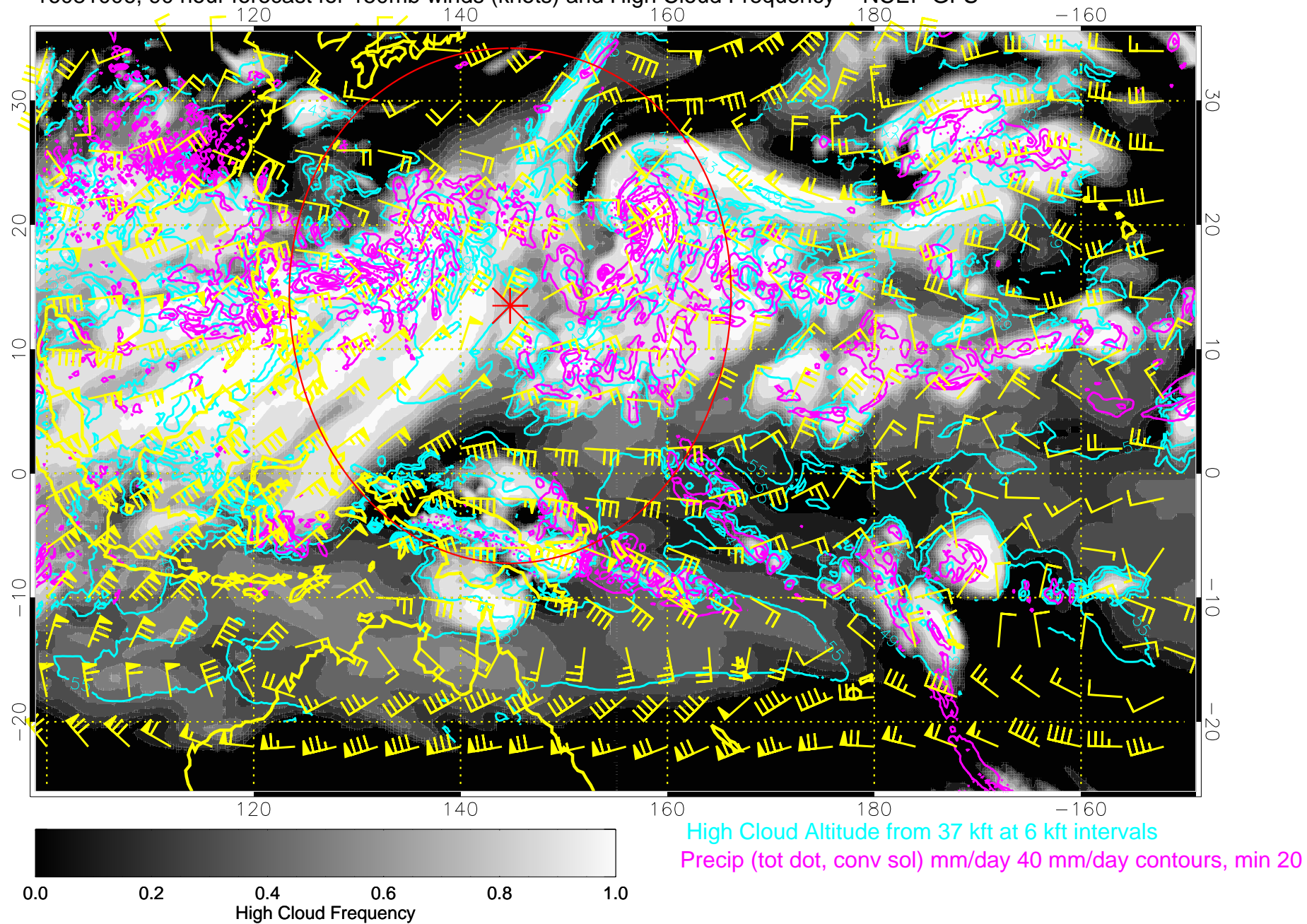
16081000, 84 hour forecast for 150mb winds (knots) and High Cloud Frequency -- NCEP GFS



Range ring of 2304 km

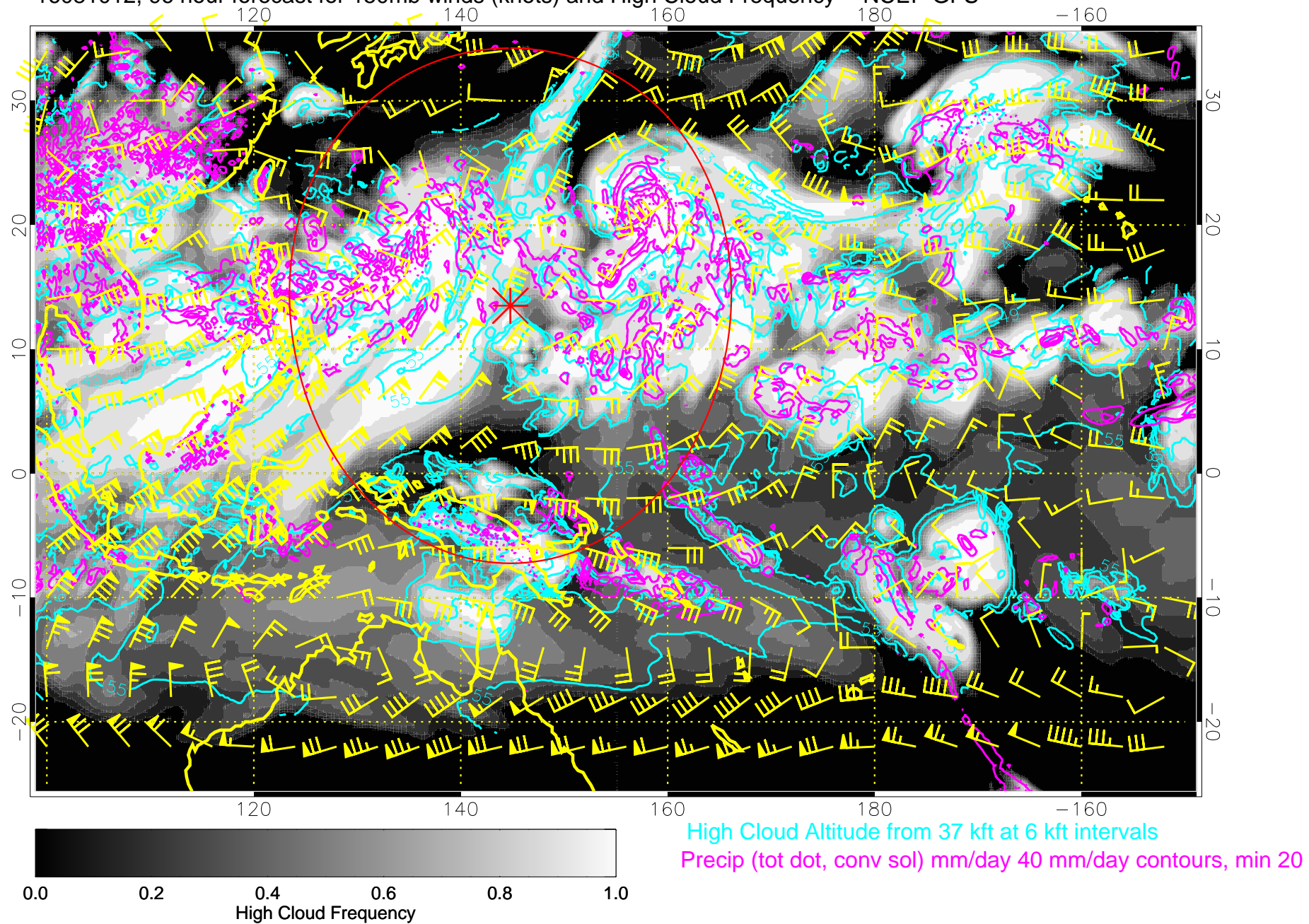


16081006, 90 hour forecast for 150mb winds (knots) and High Cloud Frequency -- NCEP GFS



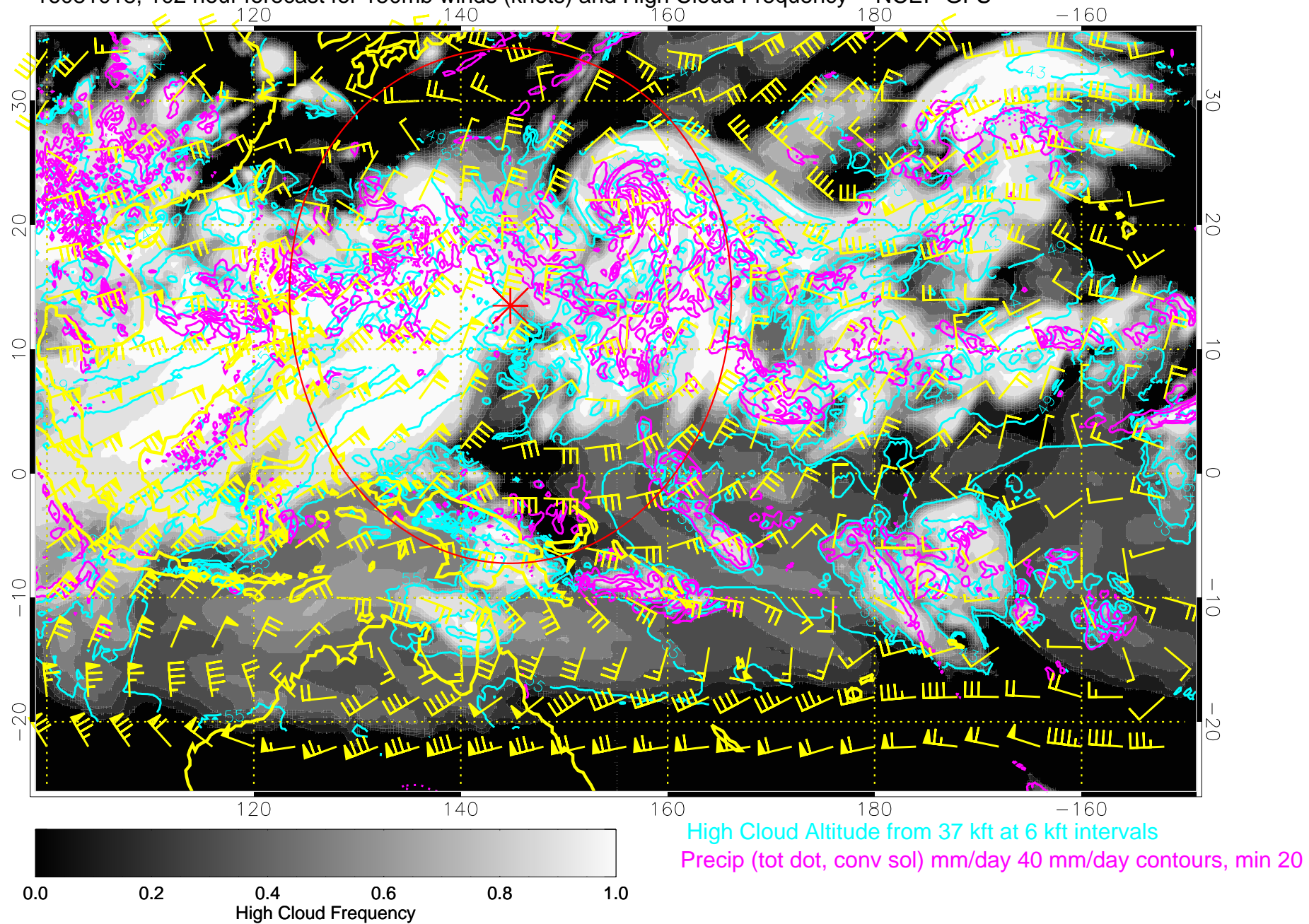
Range ring of 2304 km

16081012, 96 hour forecast for 150mb winds (knots) and High Cloud Frequency -- NCEP GFS





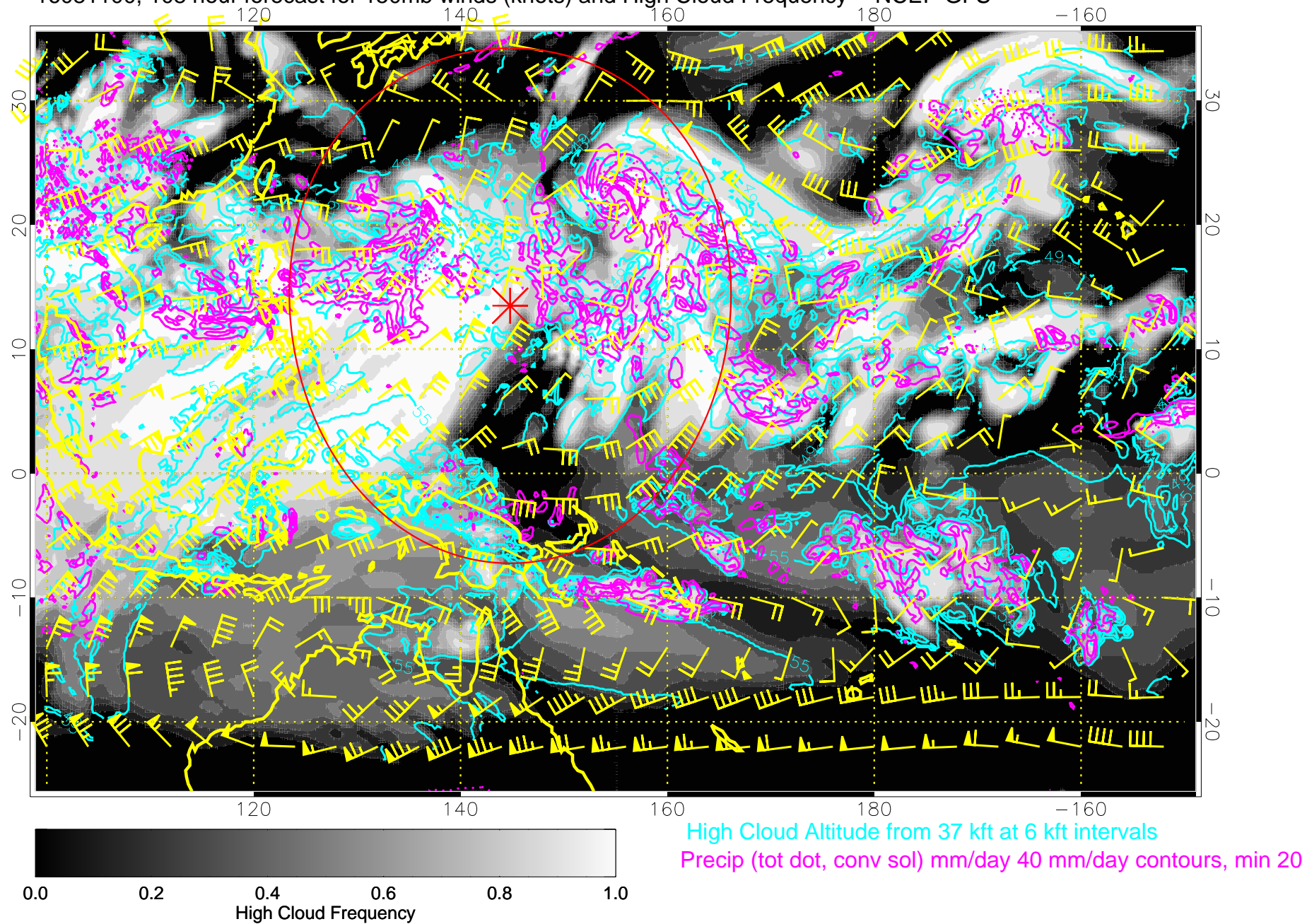
16081018, 102 hour forecast for 150mb winds (knots) and High Cloud Frequency -- NCEP GFS



High Cloud Altitude from 37 kft at 6 kft intervals  
Precip (tot dot, conv sol) mm/day 40 mm/day contours, min 20

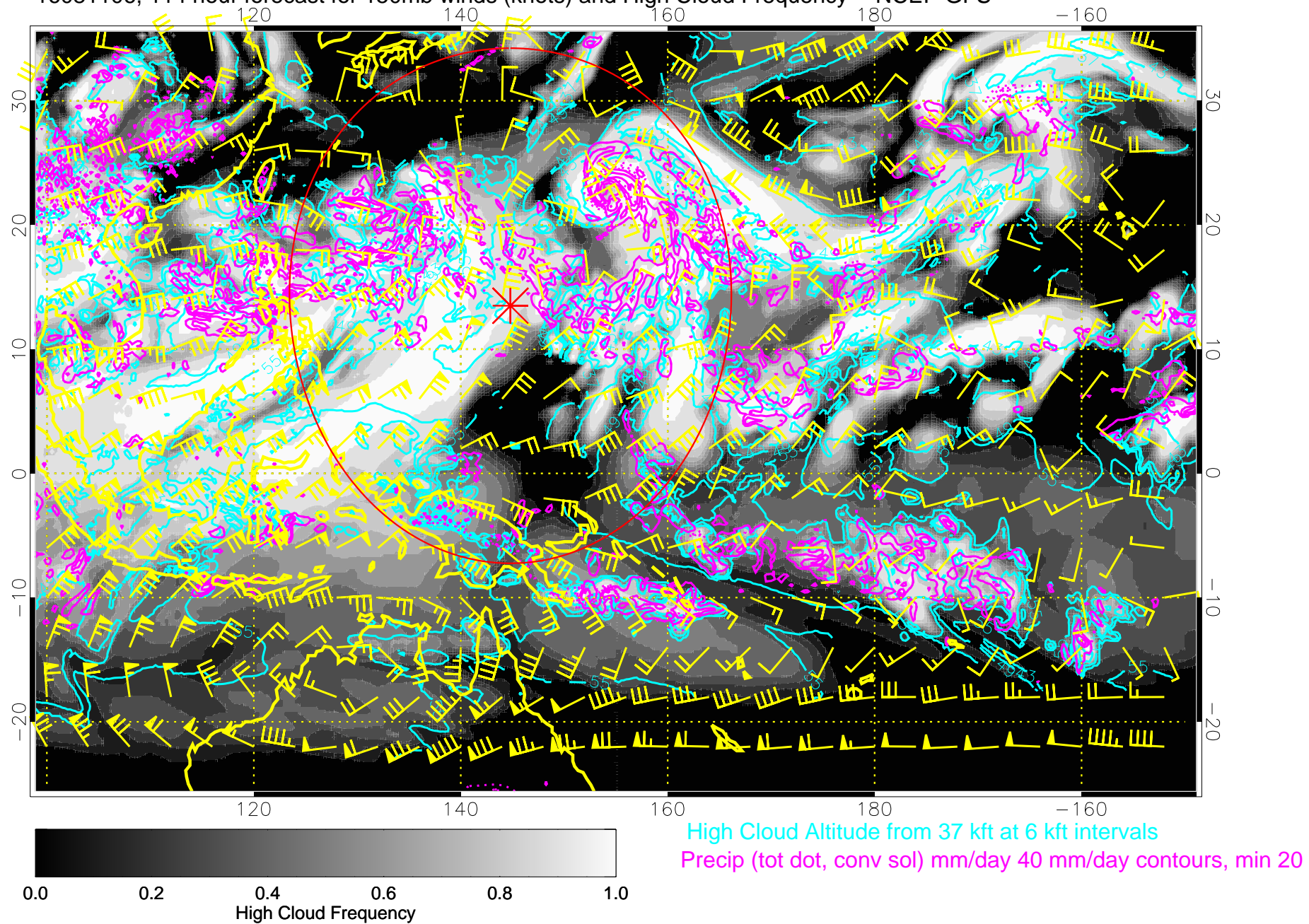
Range ring of 2304 km

16081100, 108 hour forecast for 150mb winds (knots) and High Cloud Frequency -- NCEP GFS

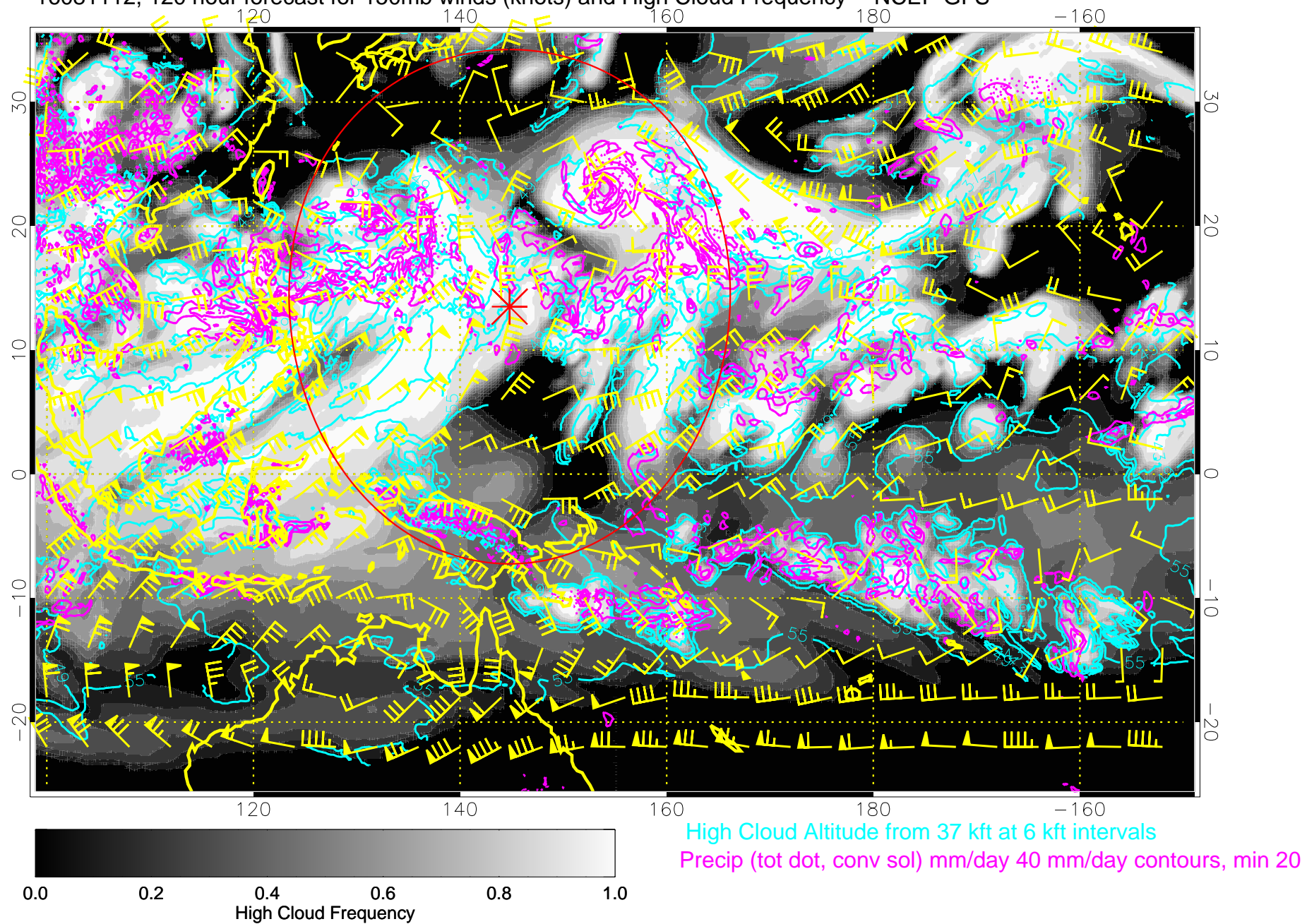




16081106, 114 hour forecast for 150mb winds (knots) and High Cloud Frequency -- NCEP GFS



16081112, 120 hour forecast for 150mb winds (knots) and High Cloud Frequency -- NCEP GFS



Range ring of 2304 km