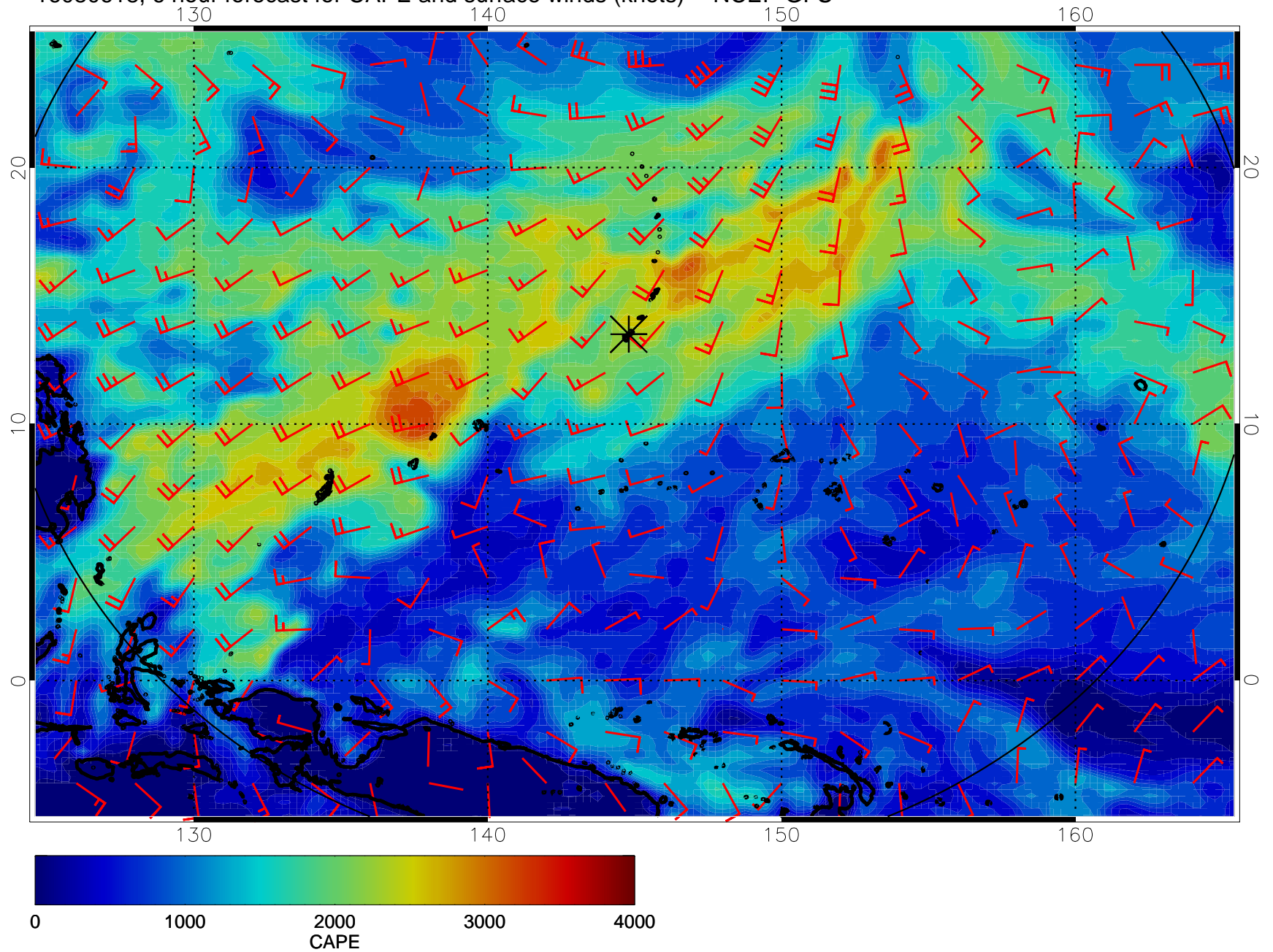
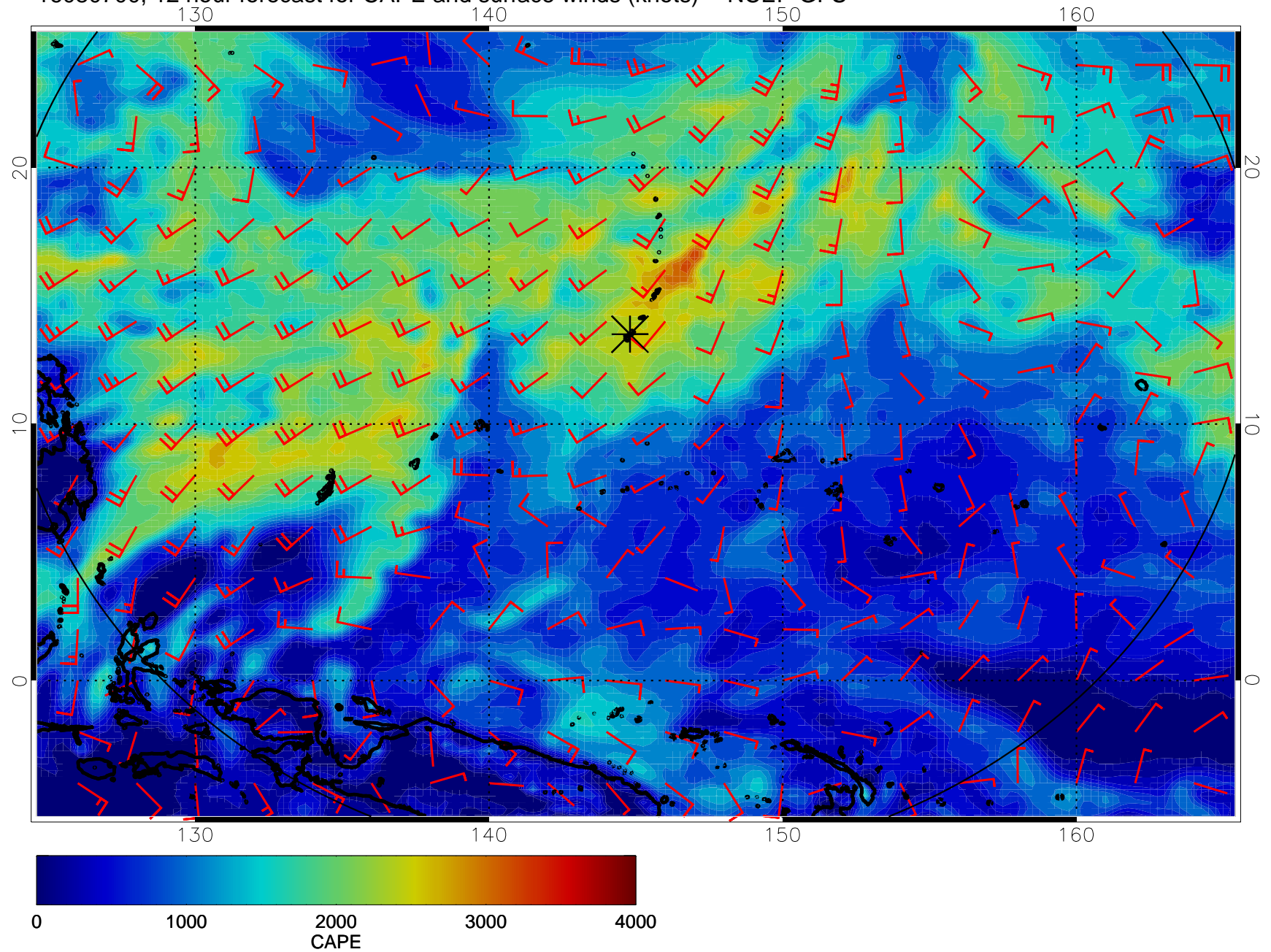


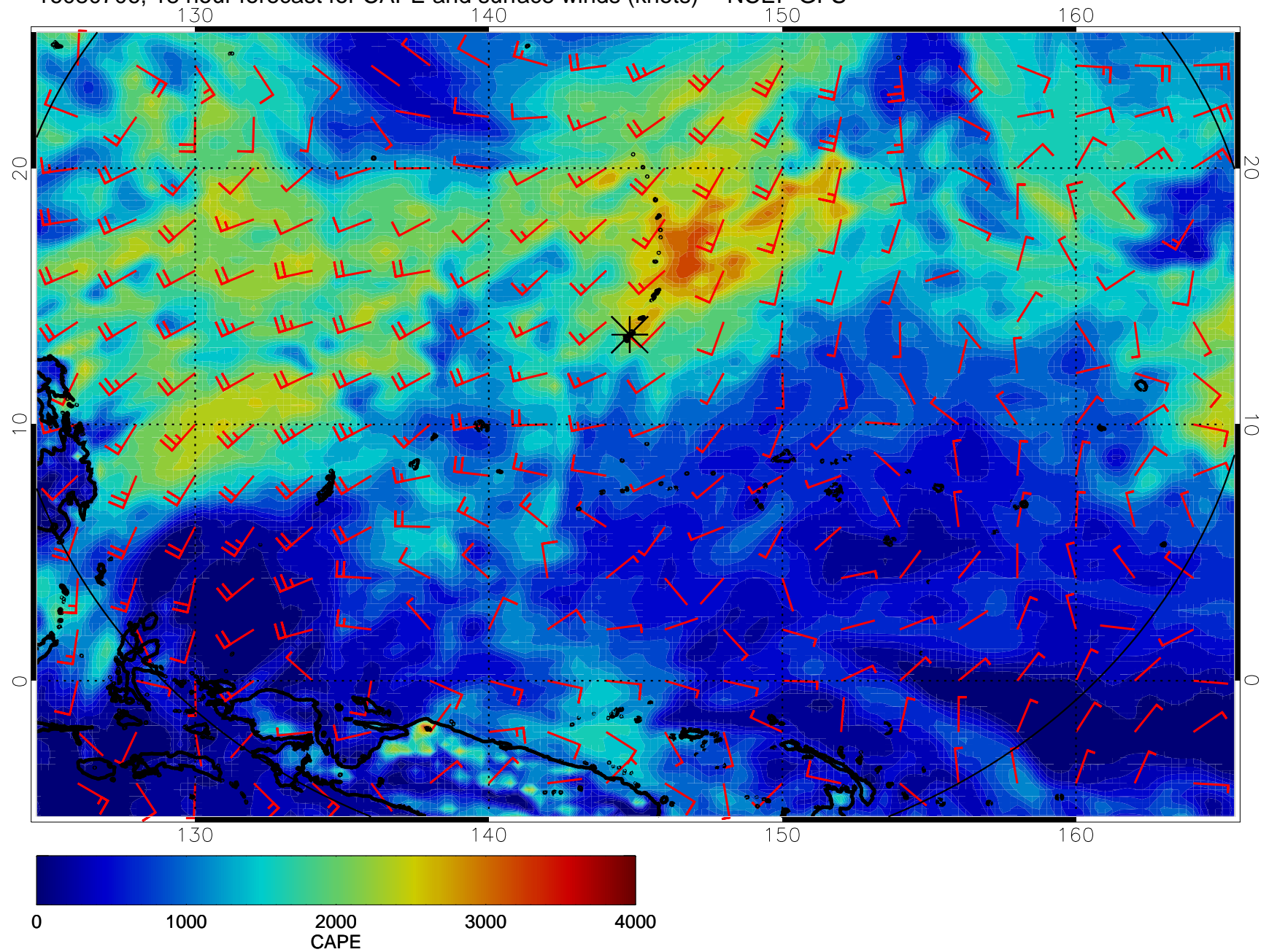
16080618, 6 hour forecast for CAPE and surface winds (knots) -- NCEP GFS



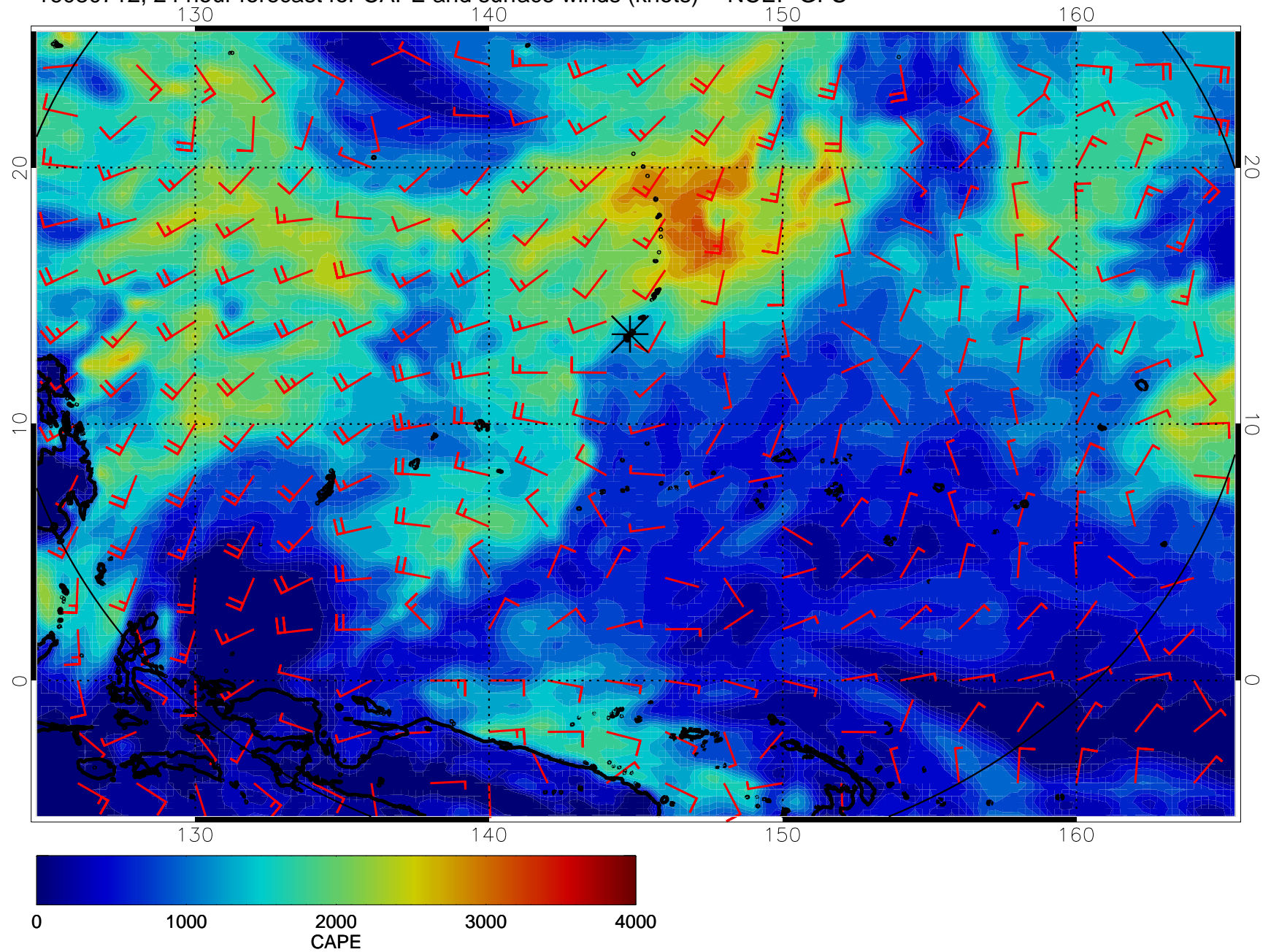
16080700, 12 hour forecast for CAPE and surface winds (knots) -- NCEP GFS



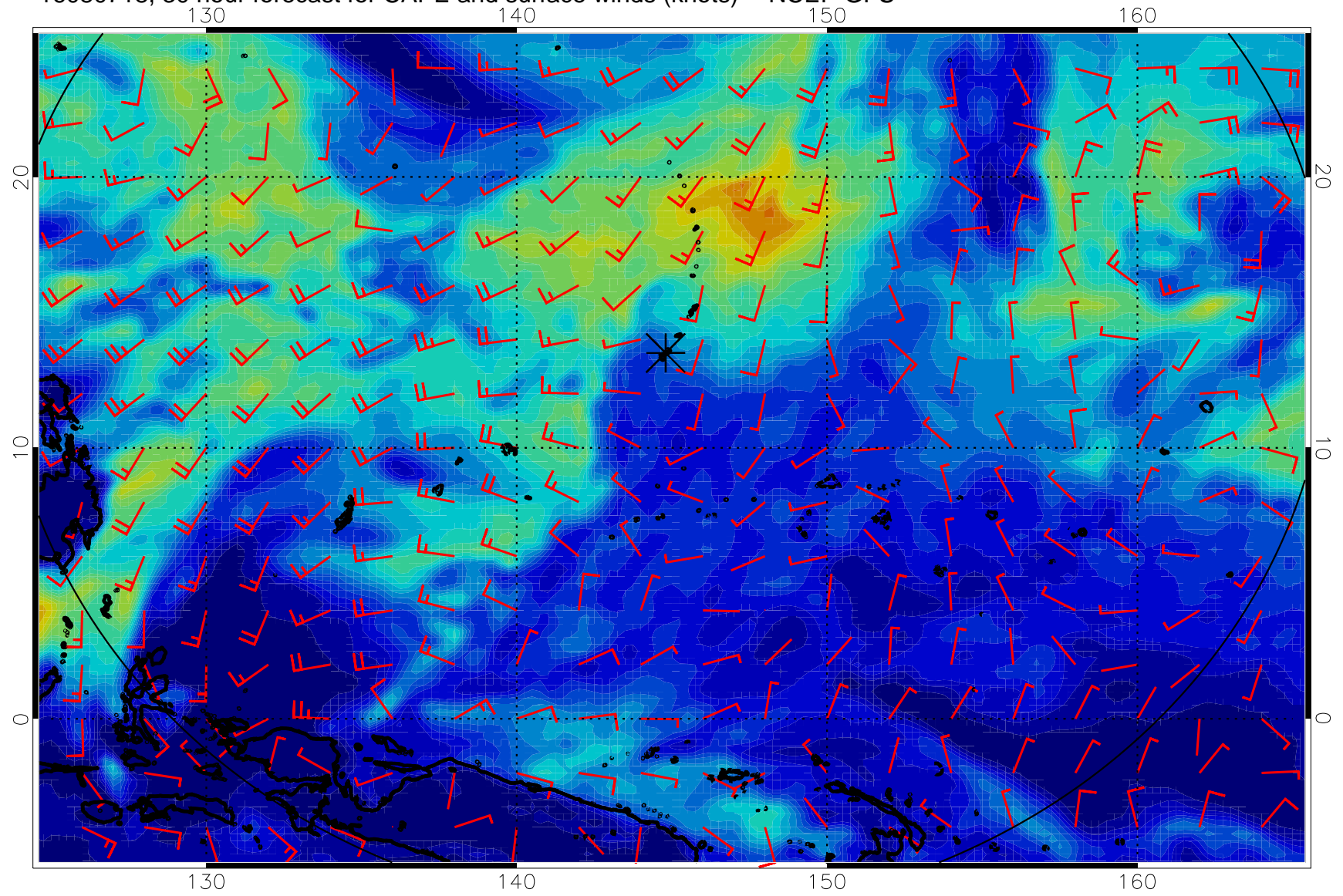
16080706, 18 hour forecast for CAPE and surface winds (knots) -- NCEP GFS



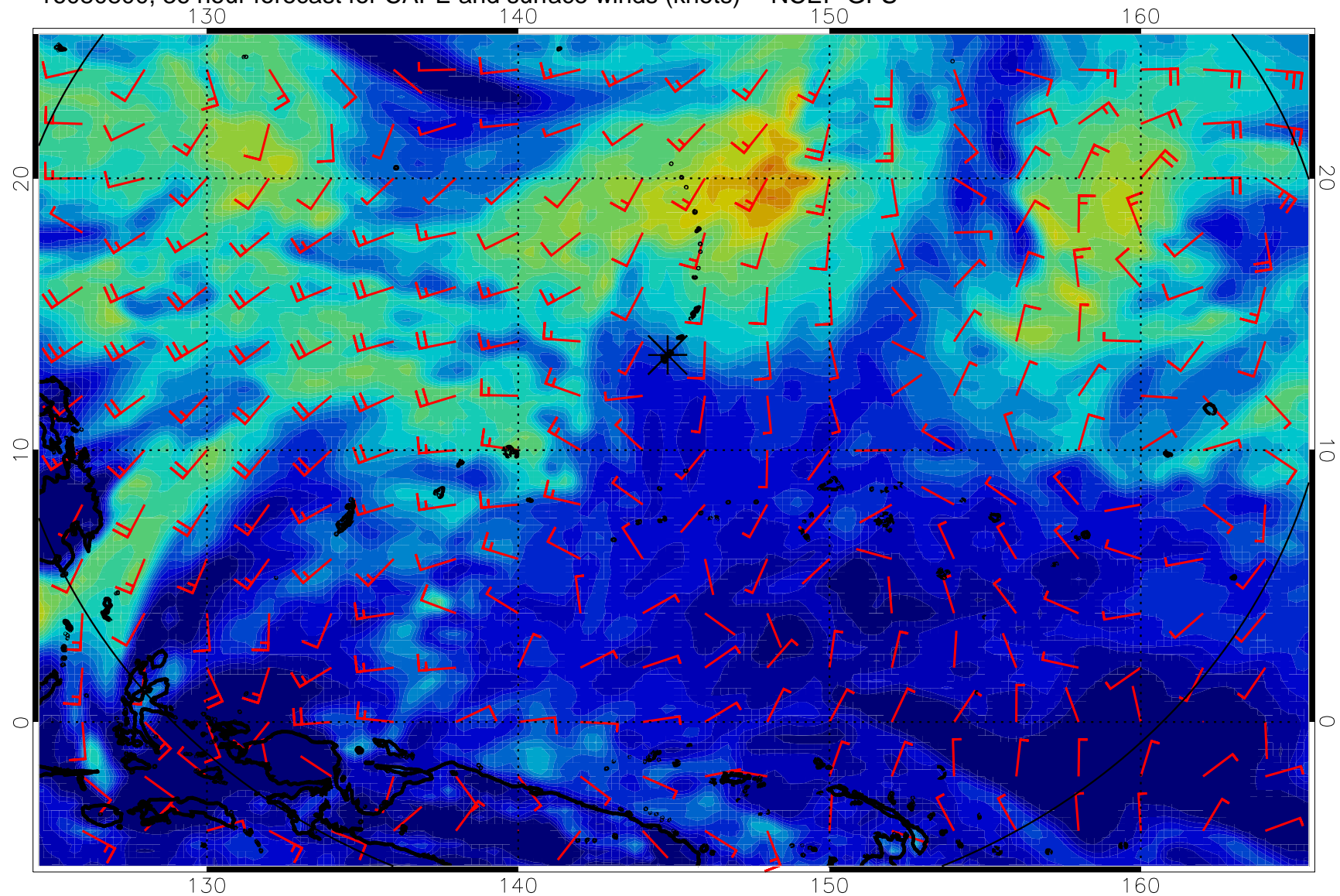
16080712, 24 hour forecast for CAPE and surface winds (knots) -- NCEP GFS



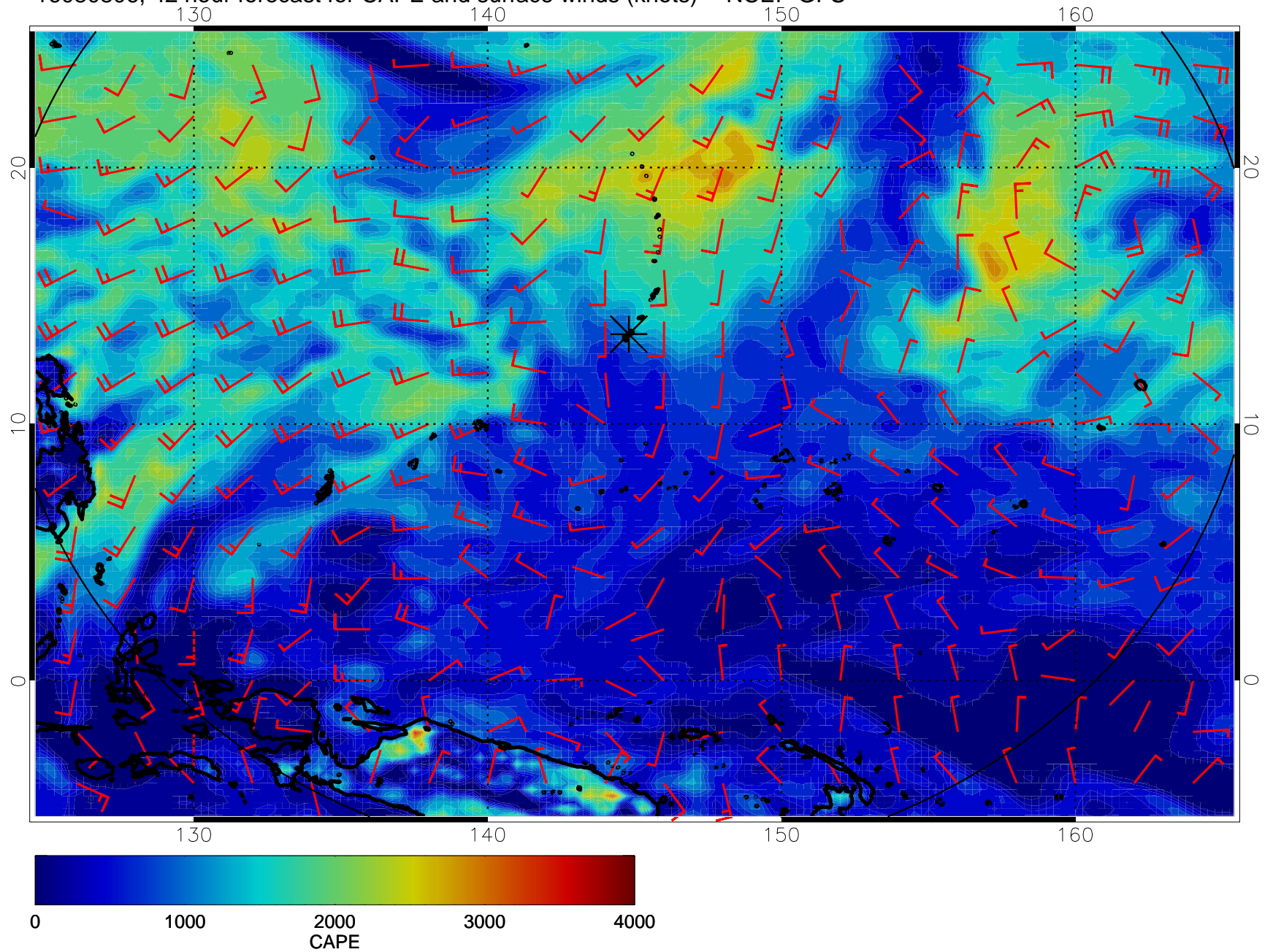
16080718, 30 hour forecast for CAPE and surface winds (knots) -- NCEP GFS



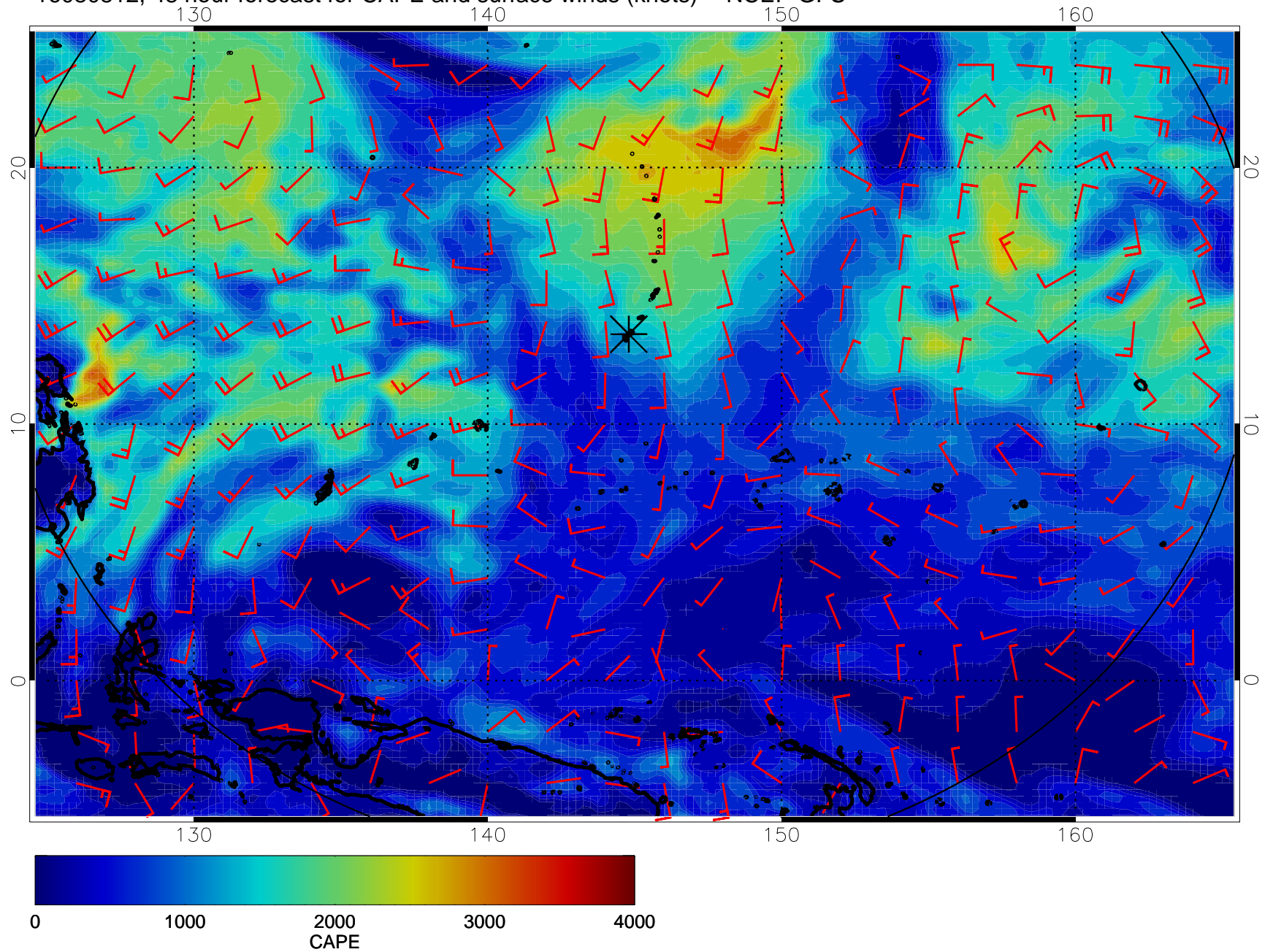
16080800, 36 hour forecast for CAPE and surface winds (knots) -- NCEP GFS



16080806, 42 hour forecast for CAPE and surface winds (knots) -- NCEP GFS

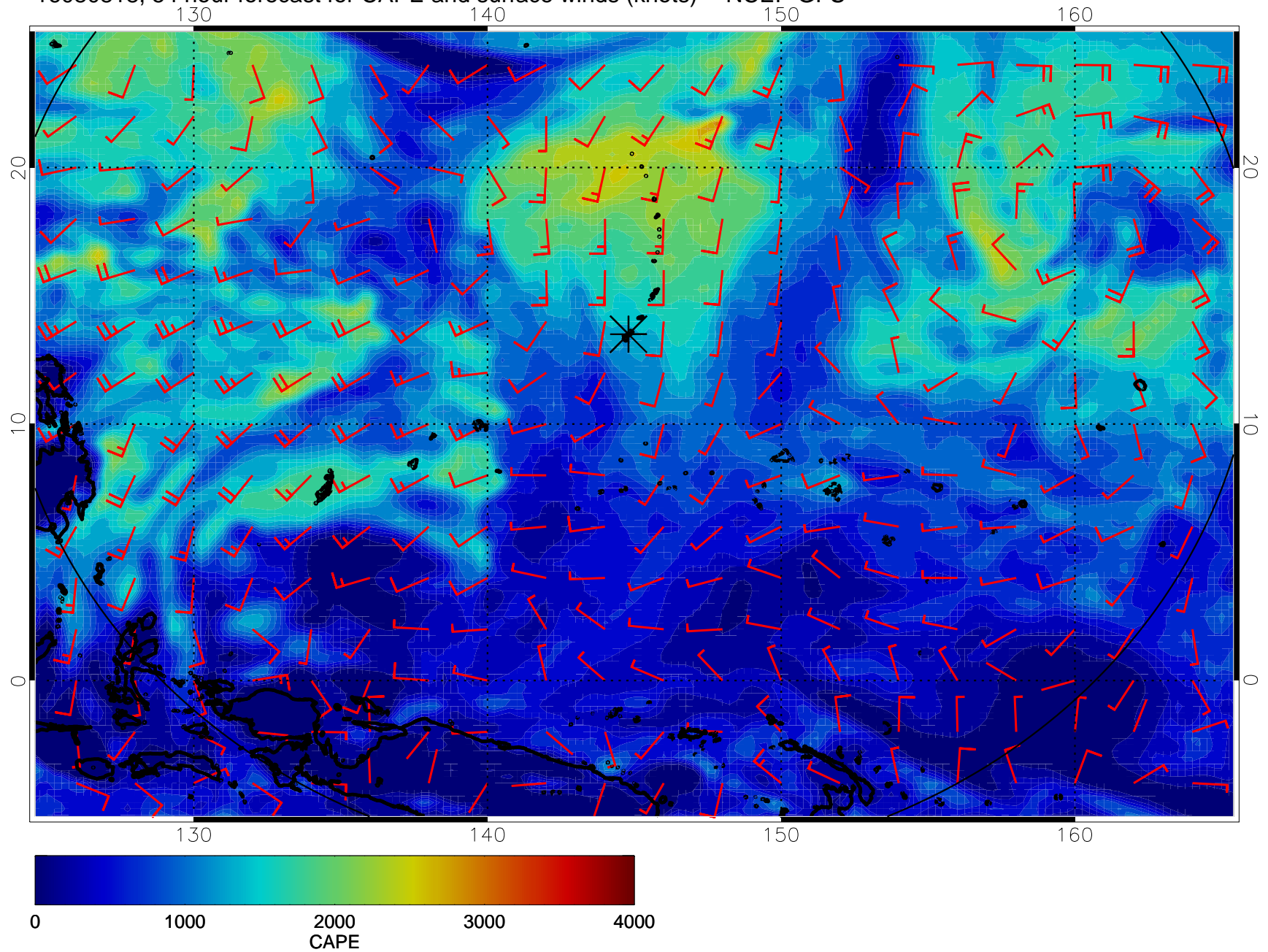


16080812, 48 hour forecast for CAPE and surface winds (knots) -- NCEP GFS

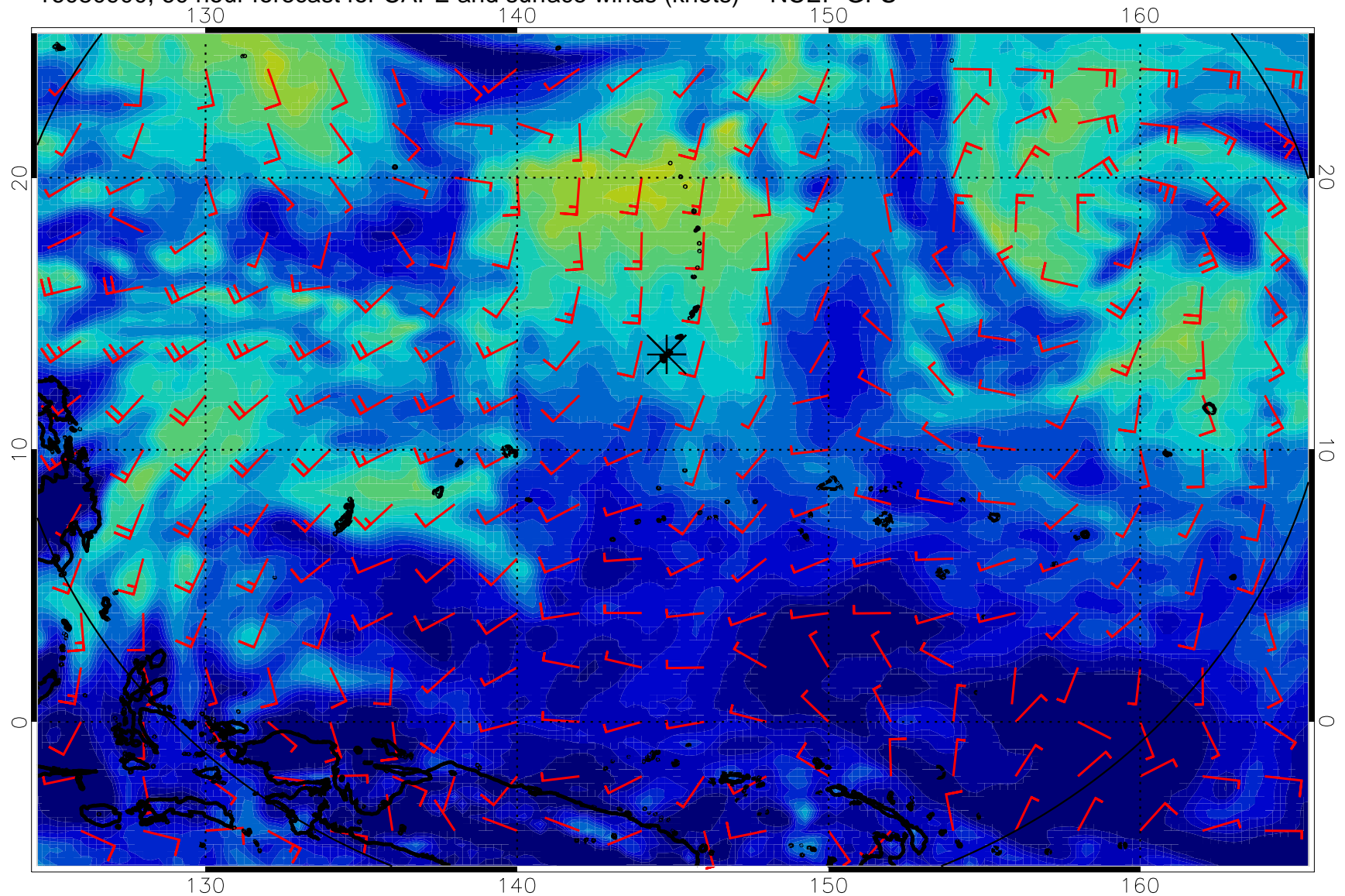




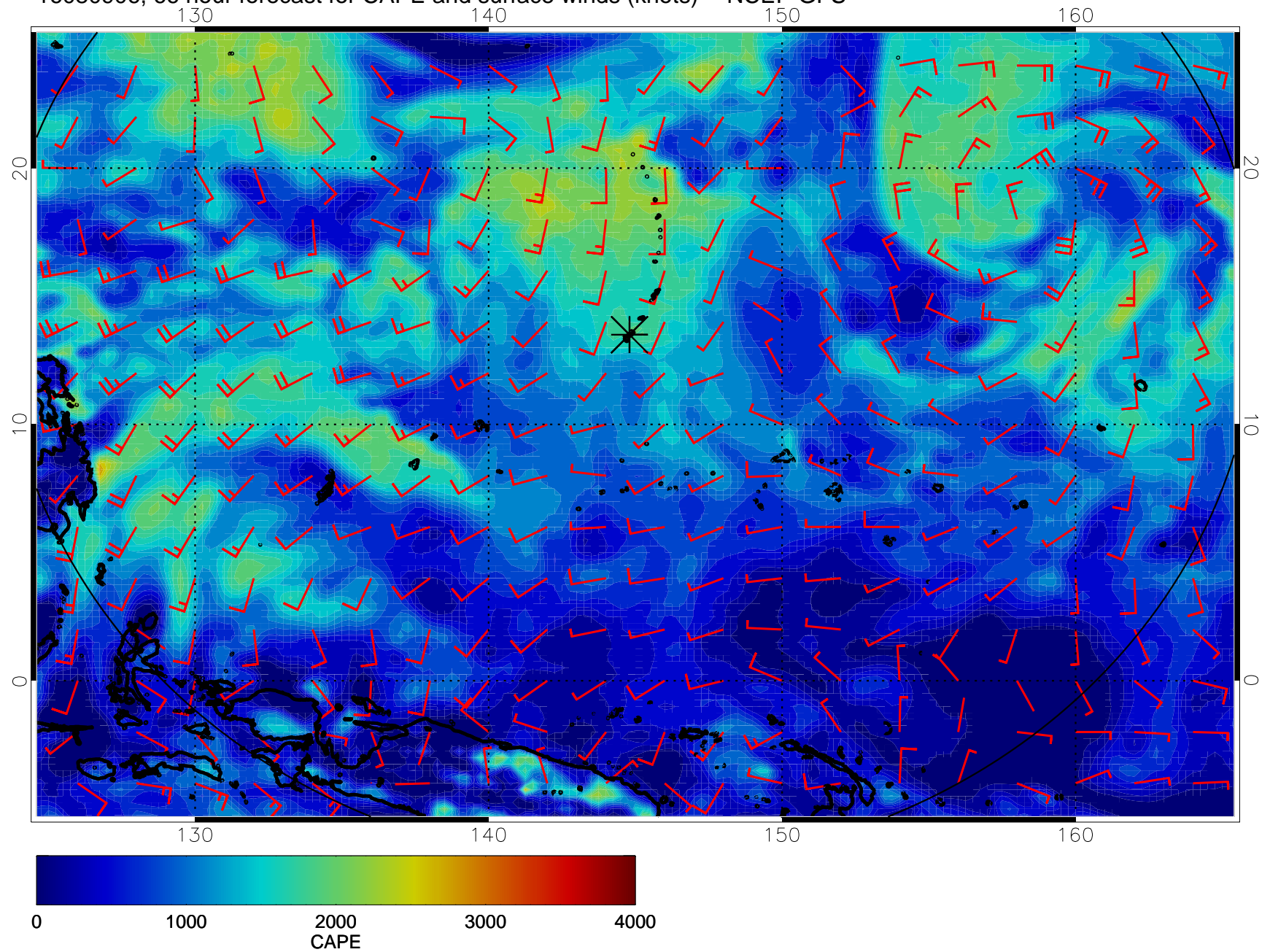
16080818, 54 hour forecast for CAPE and surface winds (knots) -- NCEP GFS



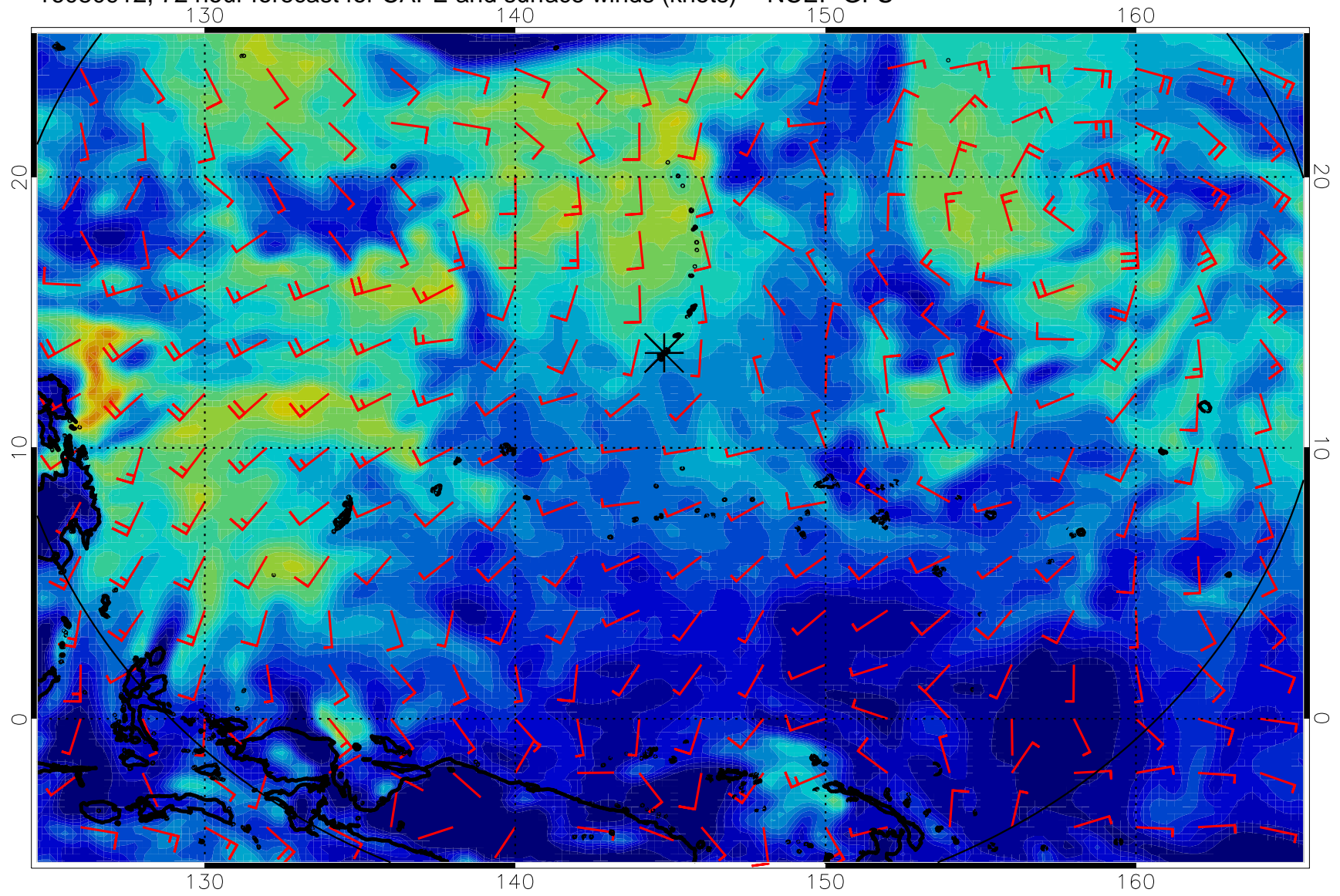
16080900, 60 hour forecast for CAPE and surface winds (knots) -- NCEP GFS



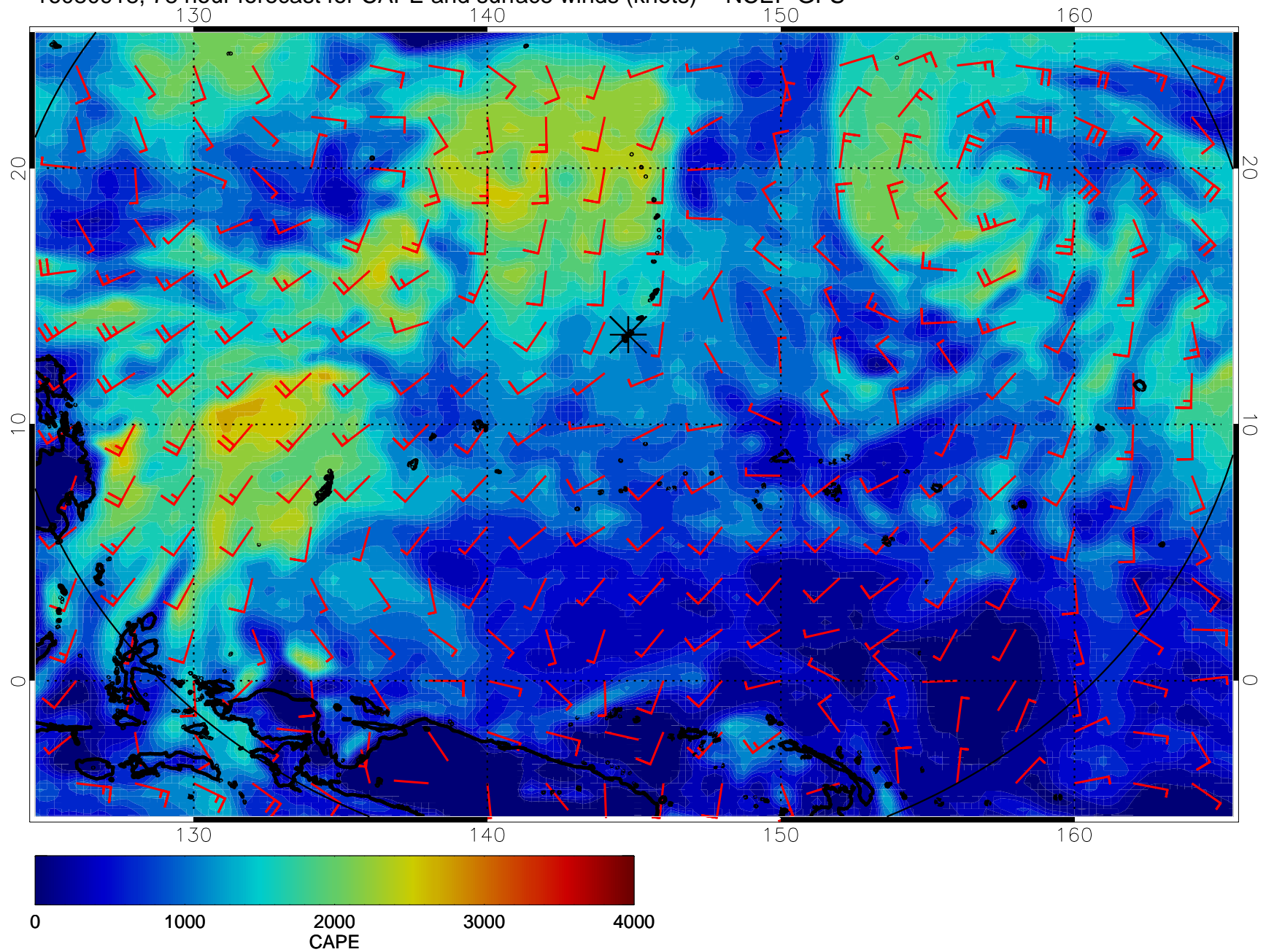
16080906, 66 hour forecast for CAPE and surface winds (knots) -- NCEP GFS



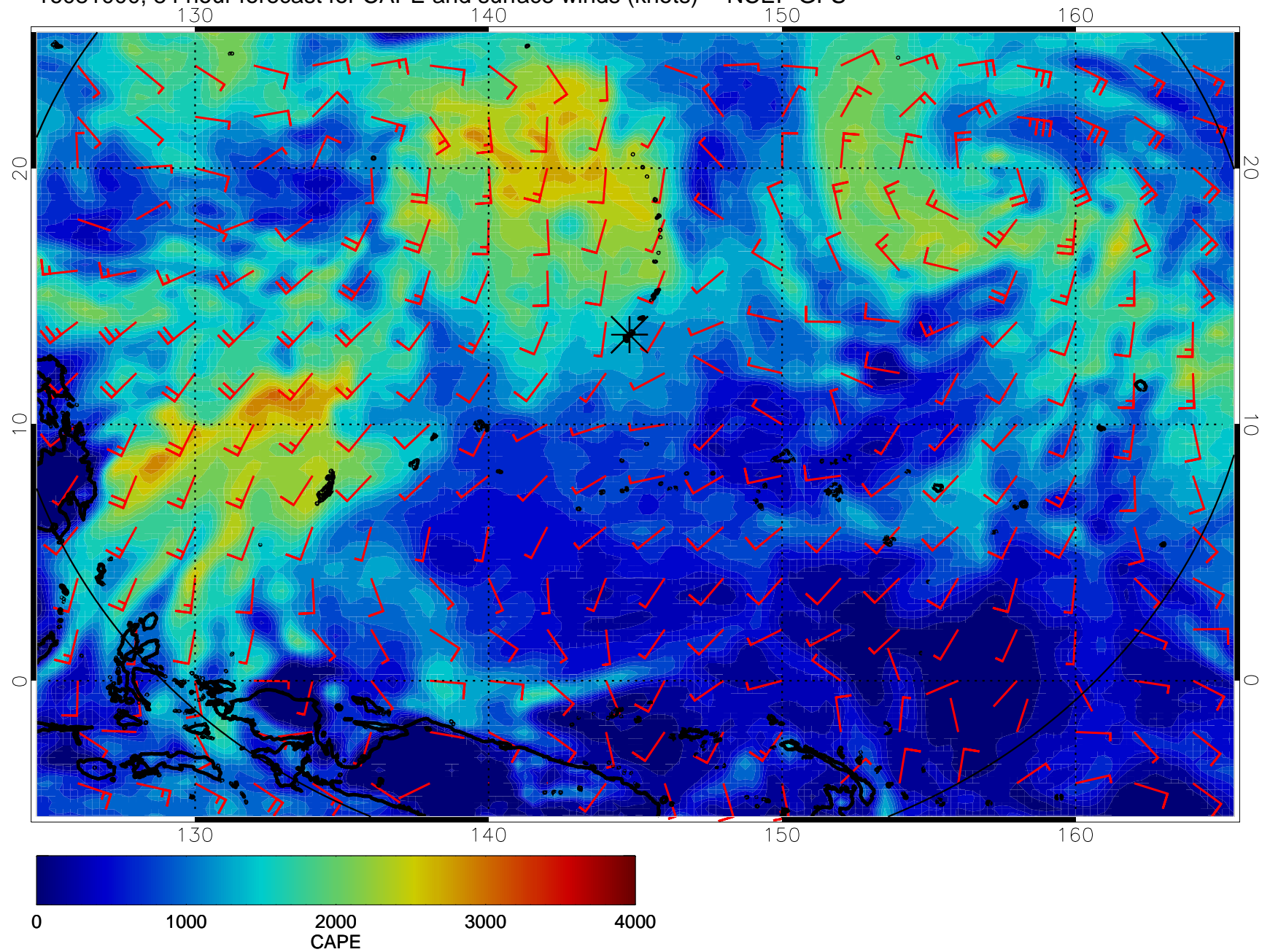
16080912, 72 hour forecast for CAPE and surface winds (knots) -- NCEP GFS



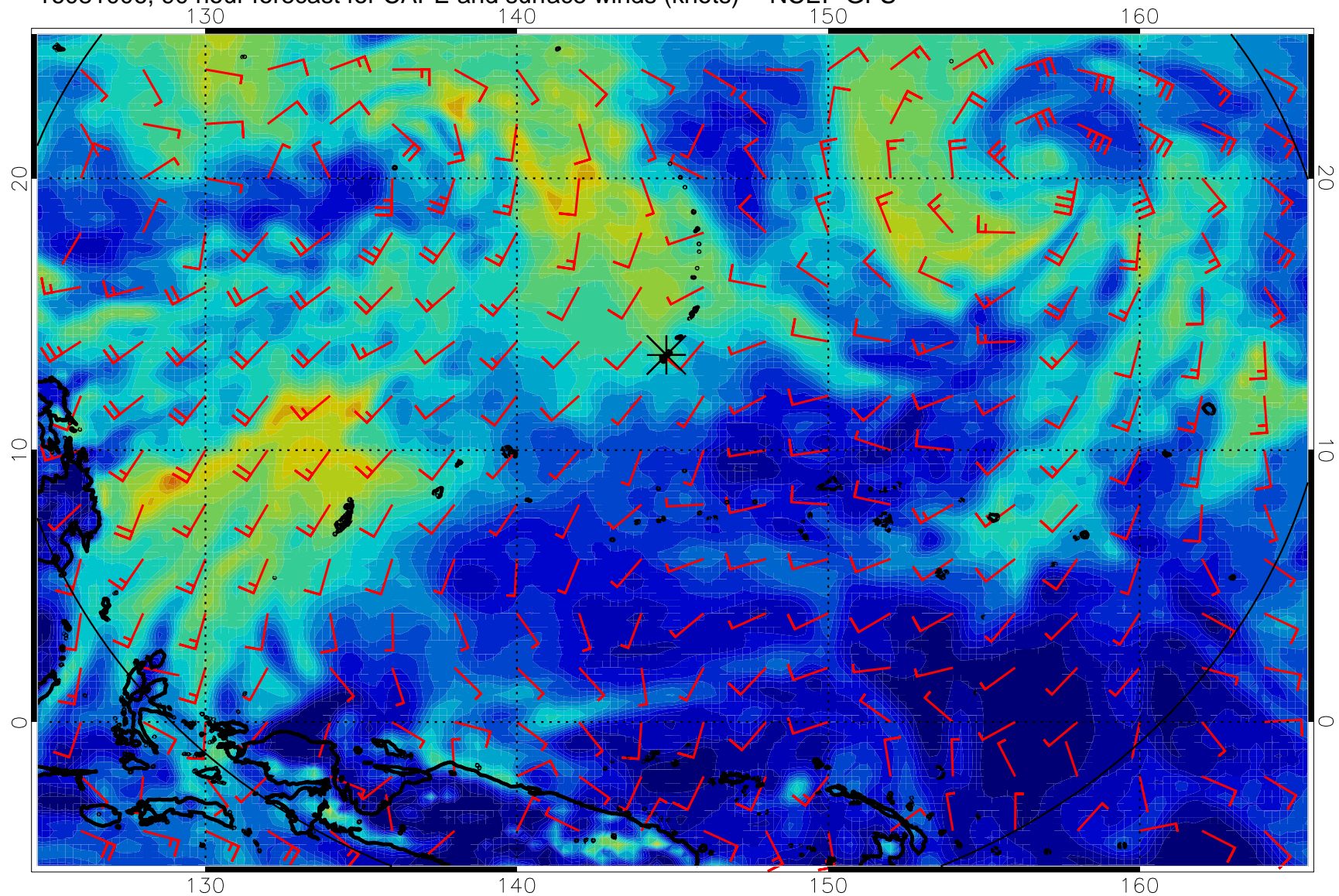
16080918, 78 hour forecast for CAPE and surface winds (knots) -- NCEP GFS



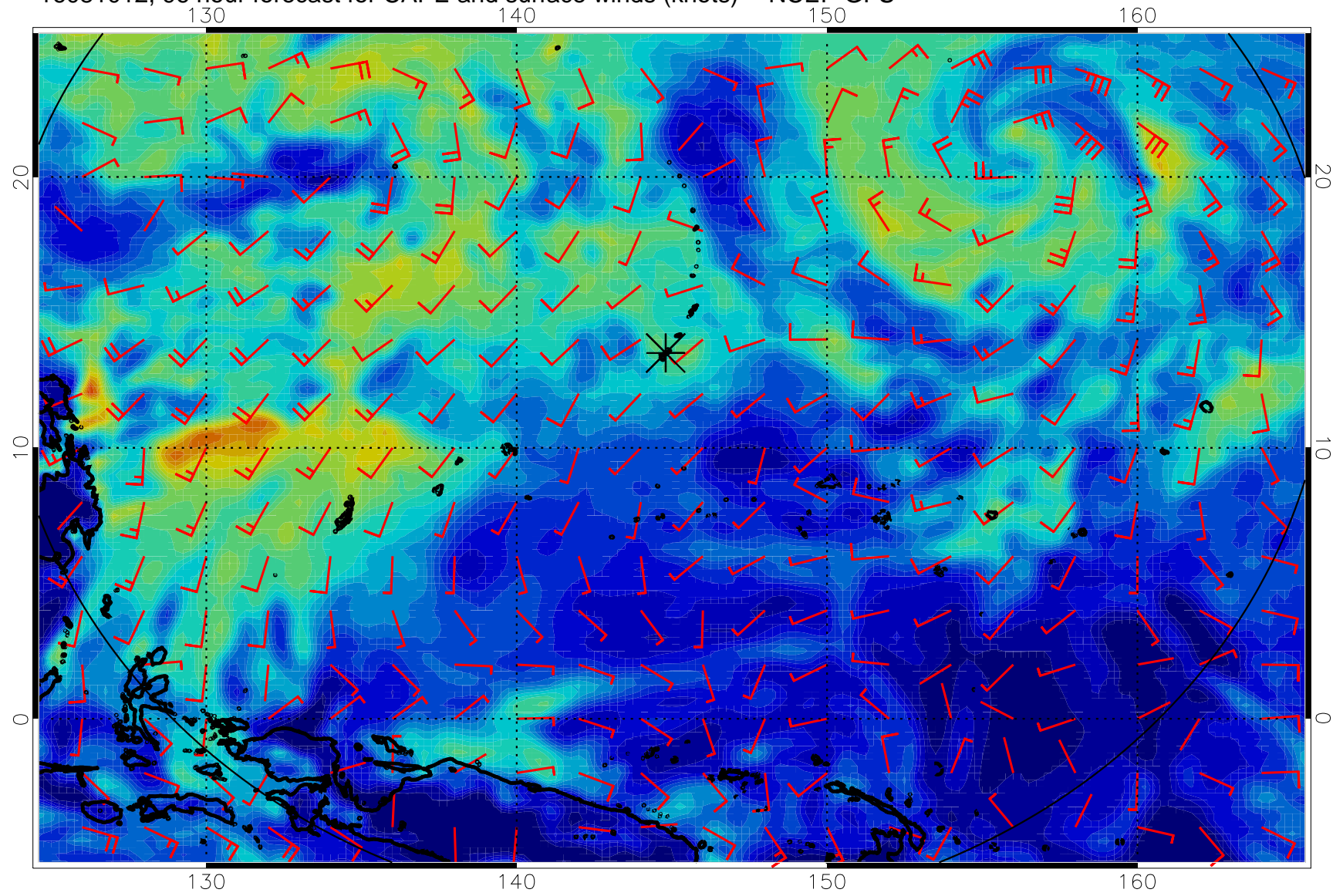
16081000, 84 hour forecast for CAPE and surface winds (knots) -- NCEP GFS



16081006, 90 hour forecast for CAPE and surface winds (knots) -- NCEP GFS

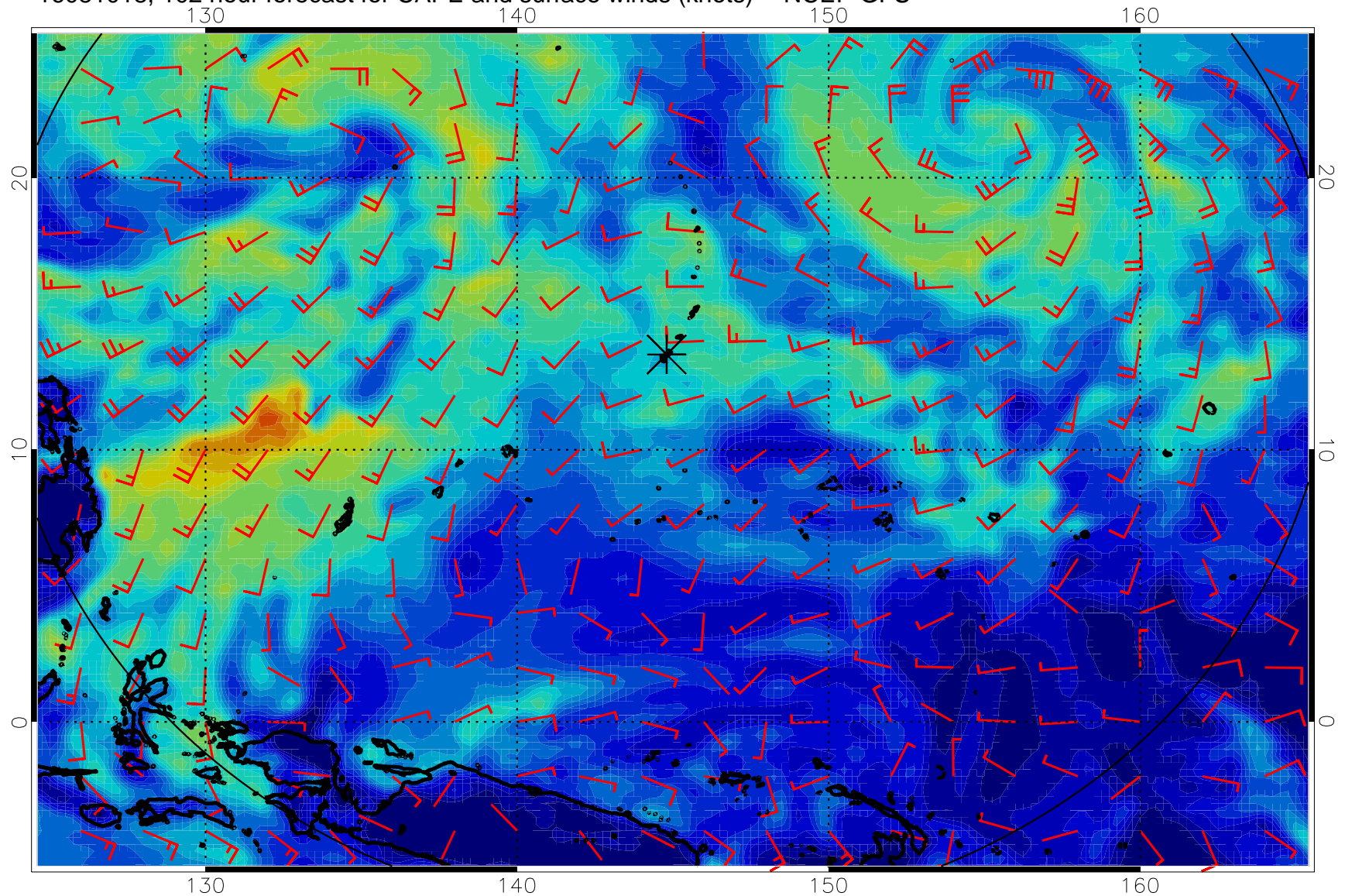


16081012, 96 hour forecast for CAPE and surface winds (knots) -- NCEP GFS

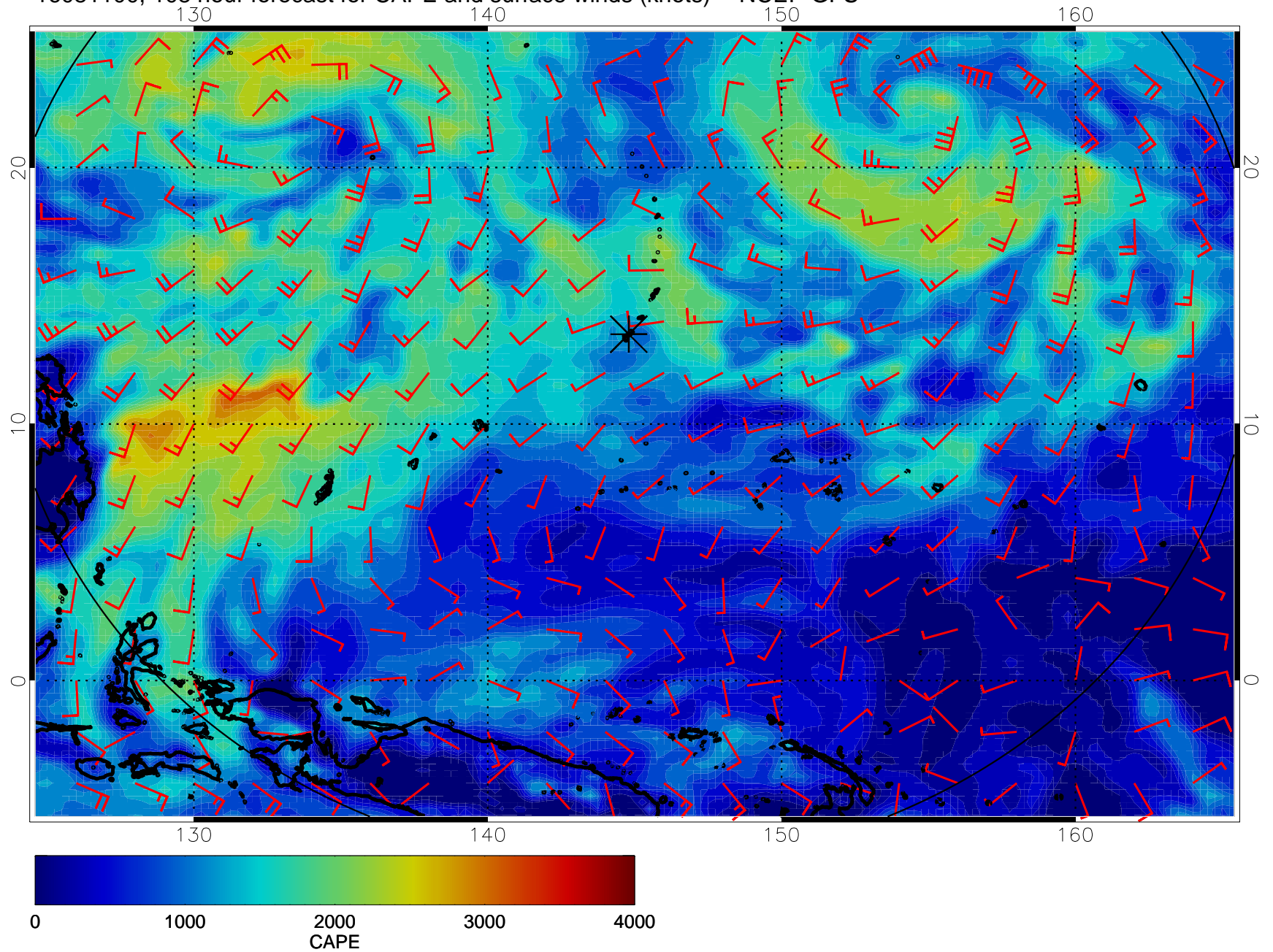




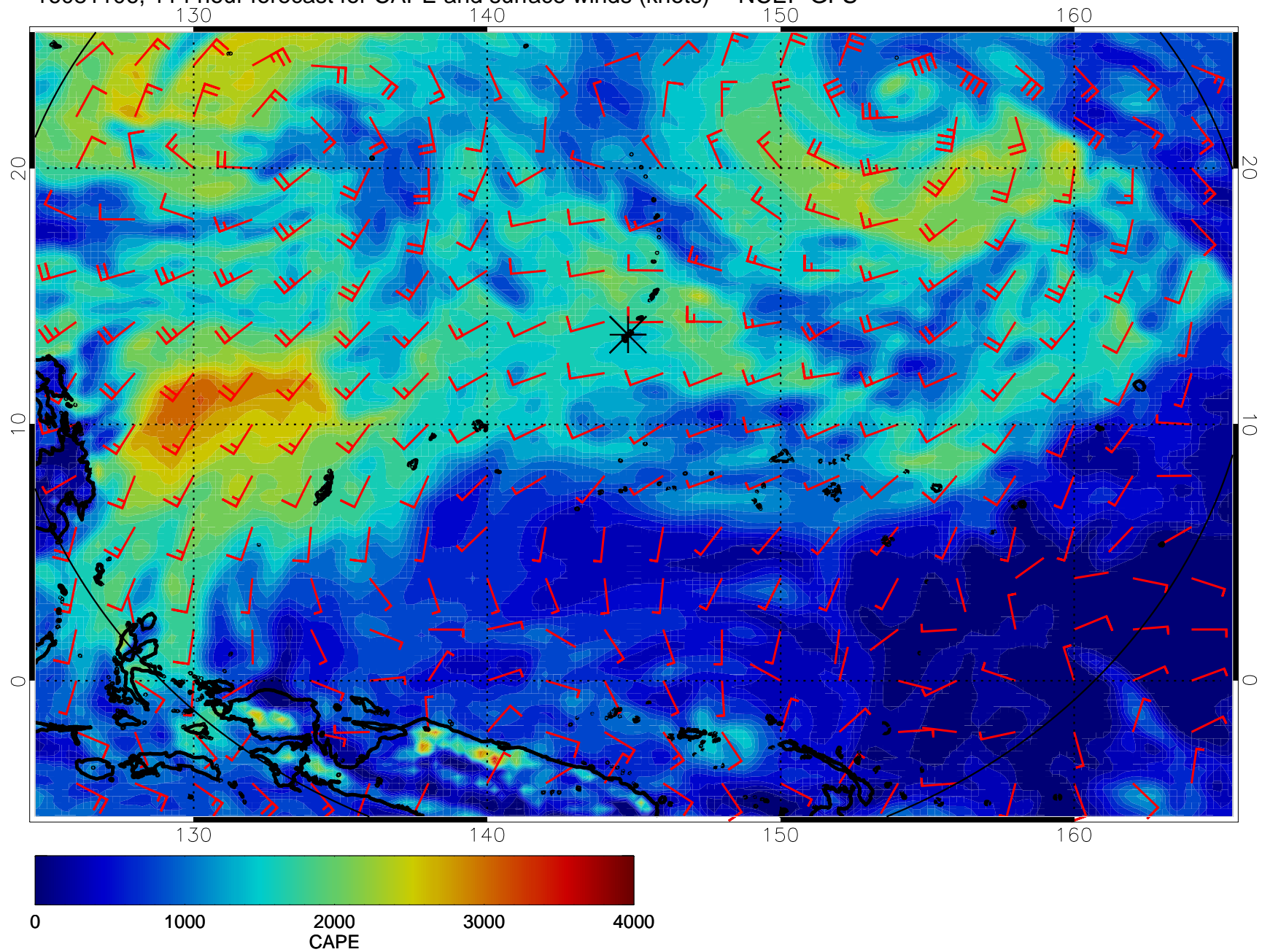
16081018, 102 hour forecast for CAPE and surface winds (knots) -- NCEP GFS



16081100, 108 hour forecast for CAPE and surface winds (knots) -- NCEP GFS



16081106, 114 hour forecast for CAPE and surface winds (knots) -- NCEP GFS



16081112, 120 hour forecast for CAPE and surface winds (knots) -- NCEP GFS

