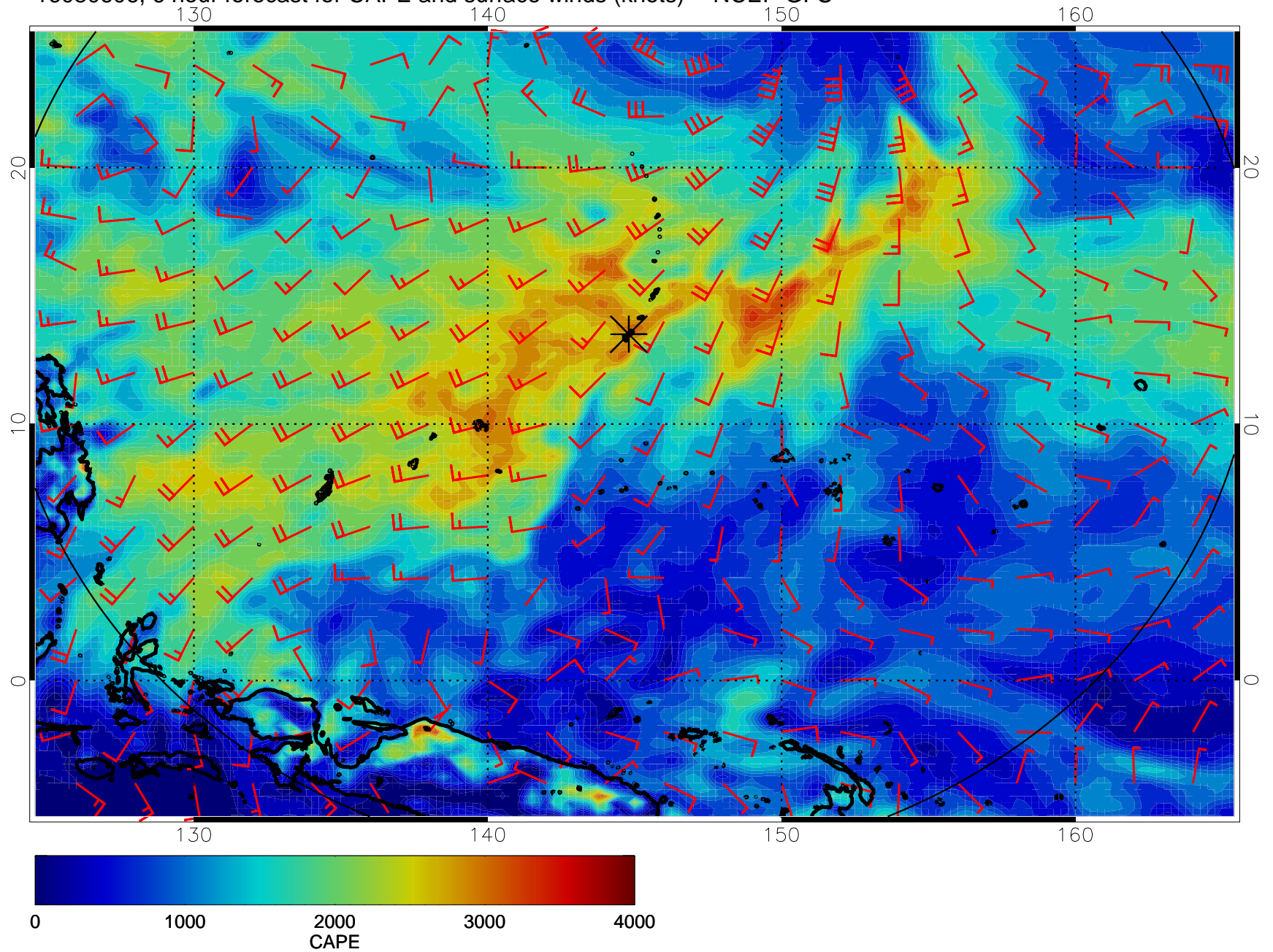
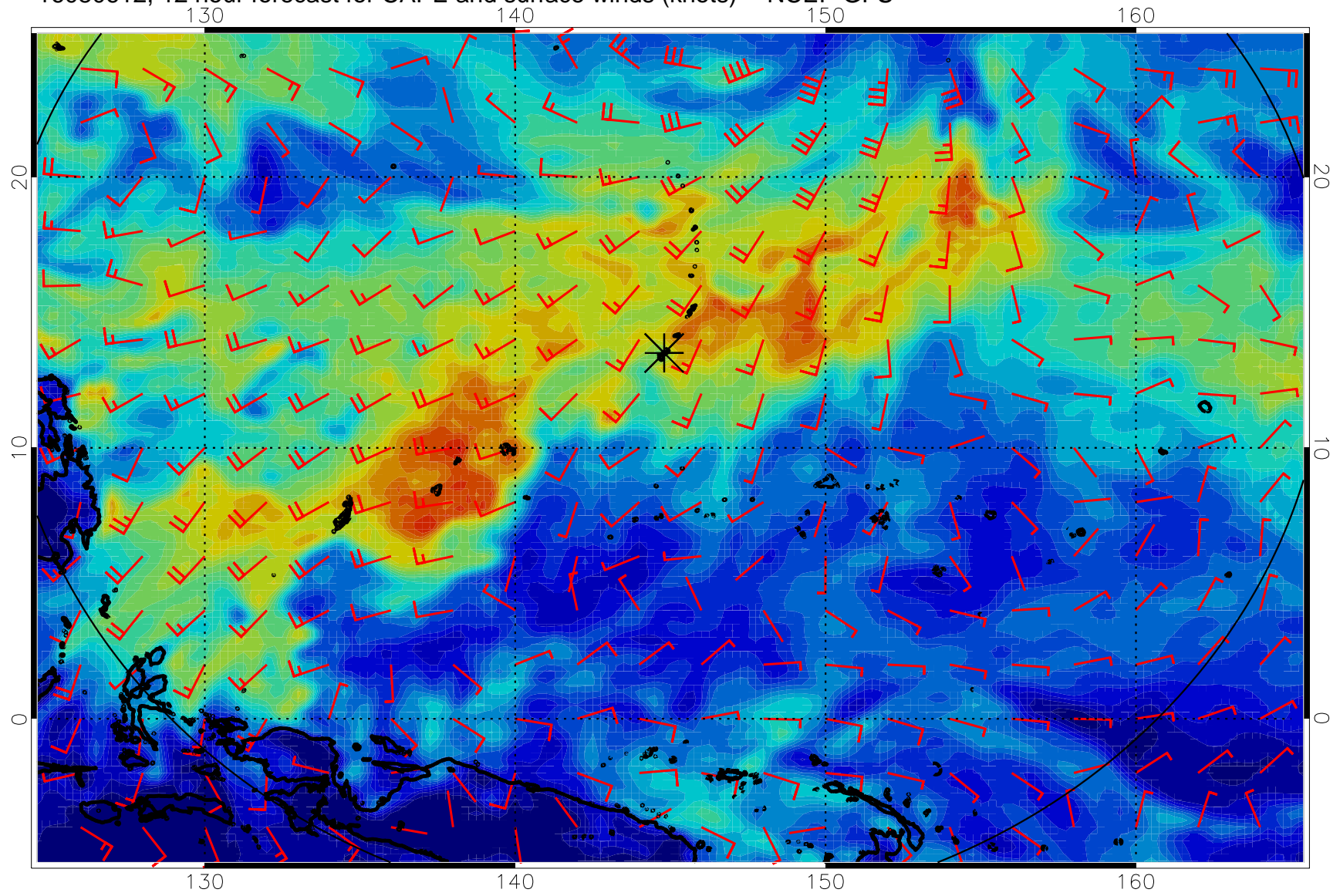


16080606, 6 hour forecast for CAPE and surface winds (knots) -- NCEP GFS

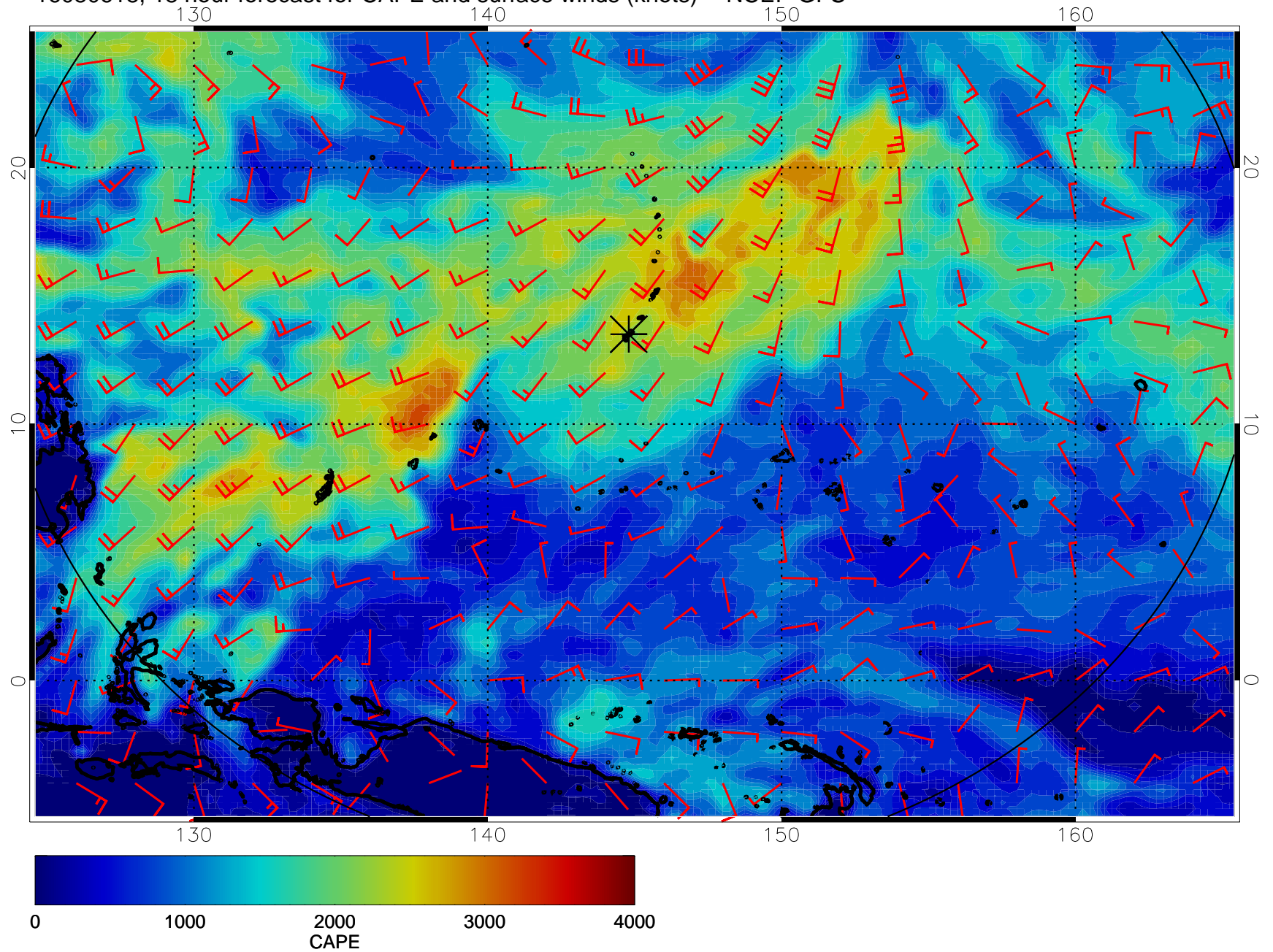


16080612, 12 hour forecast for CAPE and surface winds (knots) -- NCEP GFS

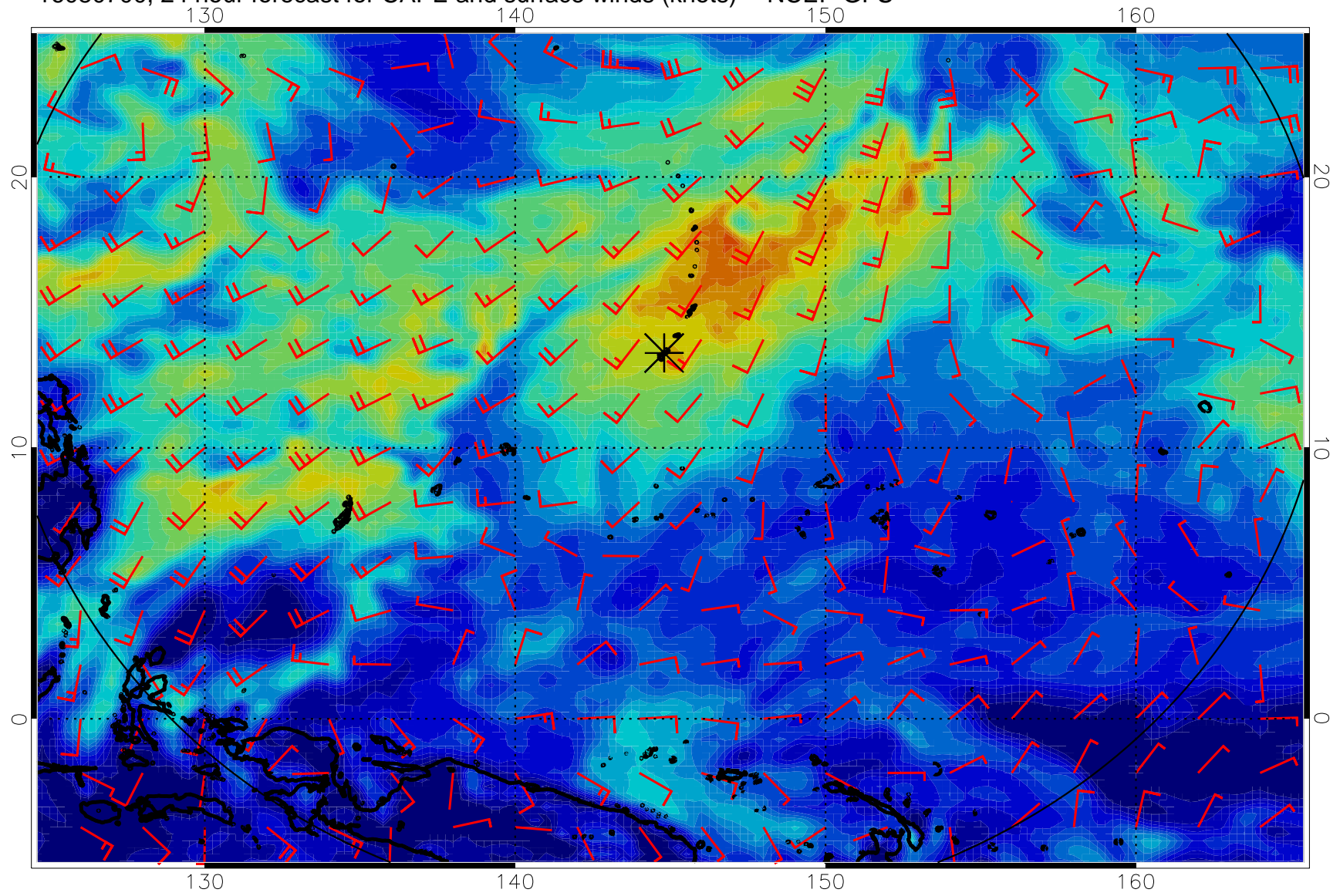




16080618, 18 hour forecast for CAPE and surface winds (knots) -- NCEP GFS

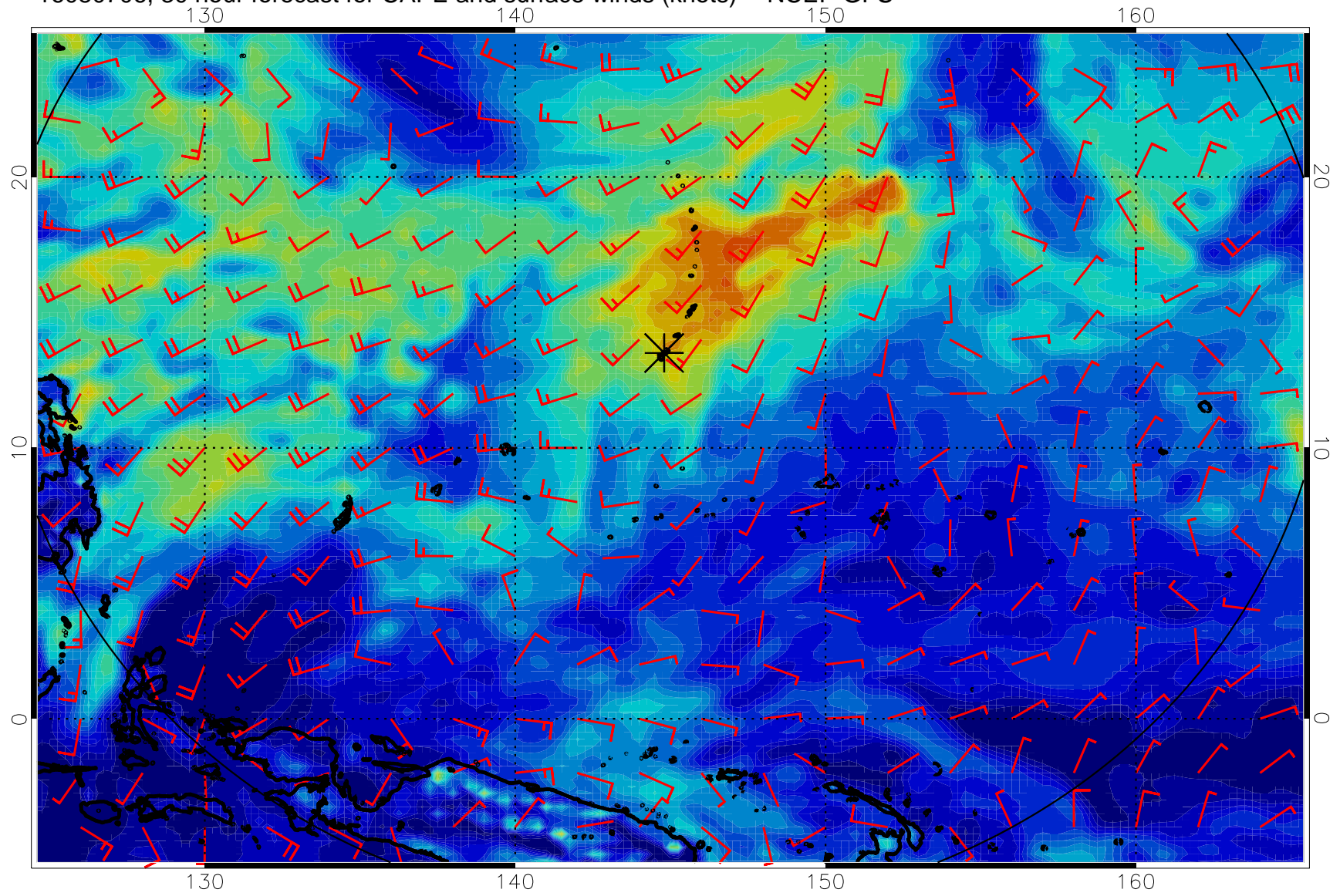


16080700, 24 hour forecast for CAPE and surface winds (knots) -- NCEP GFS

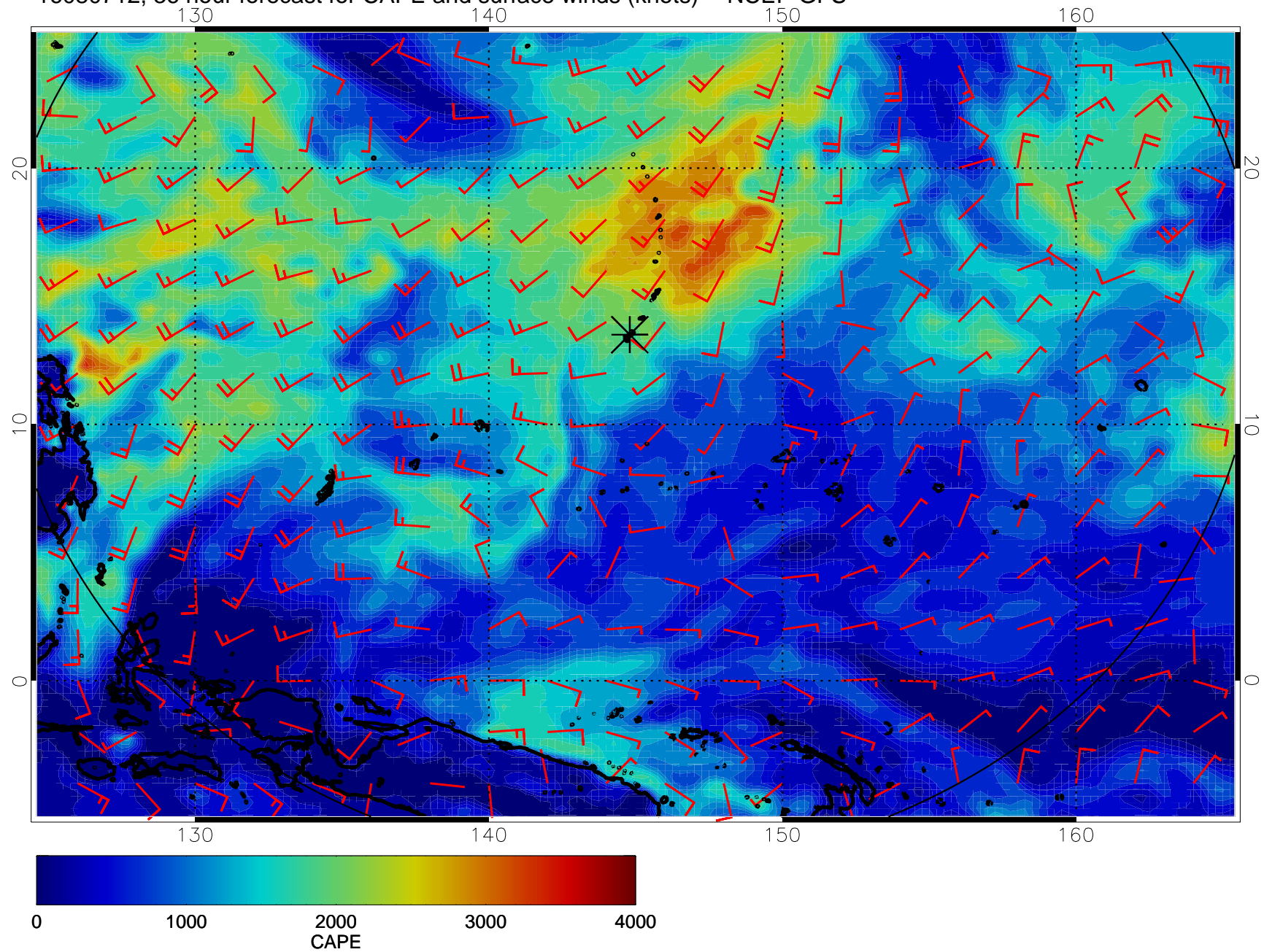




16080706, 30 hour forecast for CAPE and surface winds (knots) -- NCEP GFS

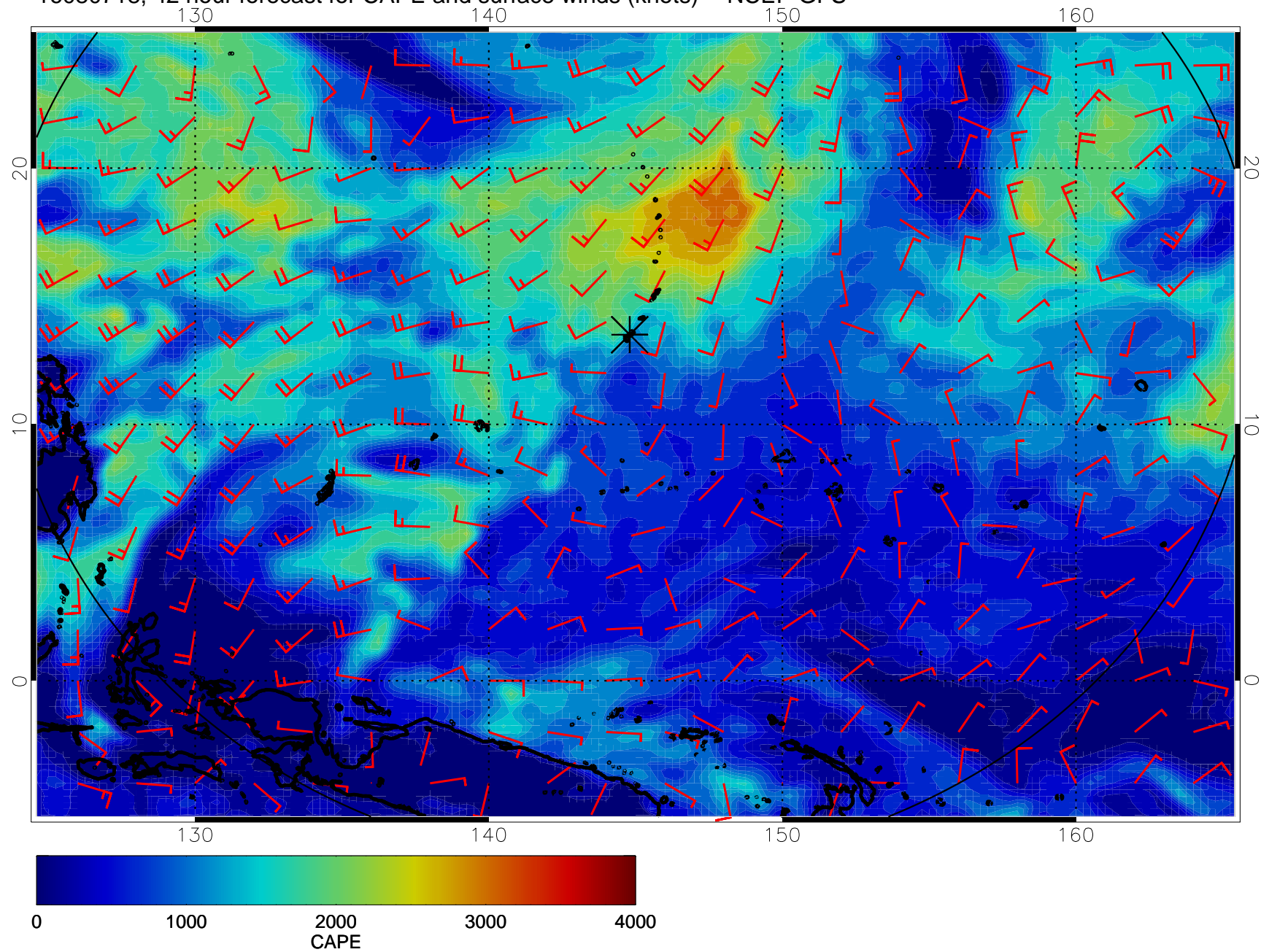


16080712, 36 hour forecast for CAPE and surface winds (knots) -- NCEP GFS

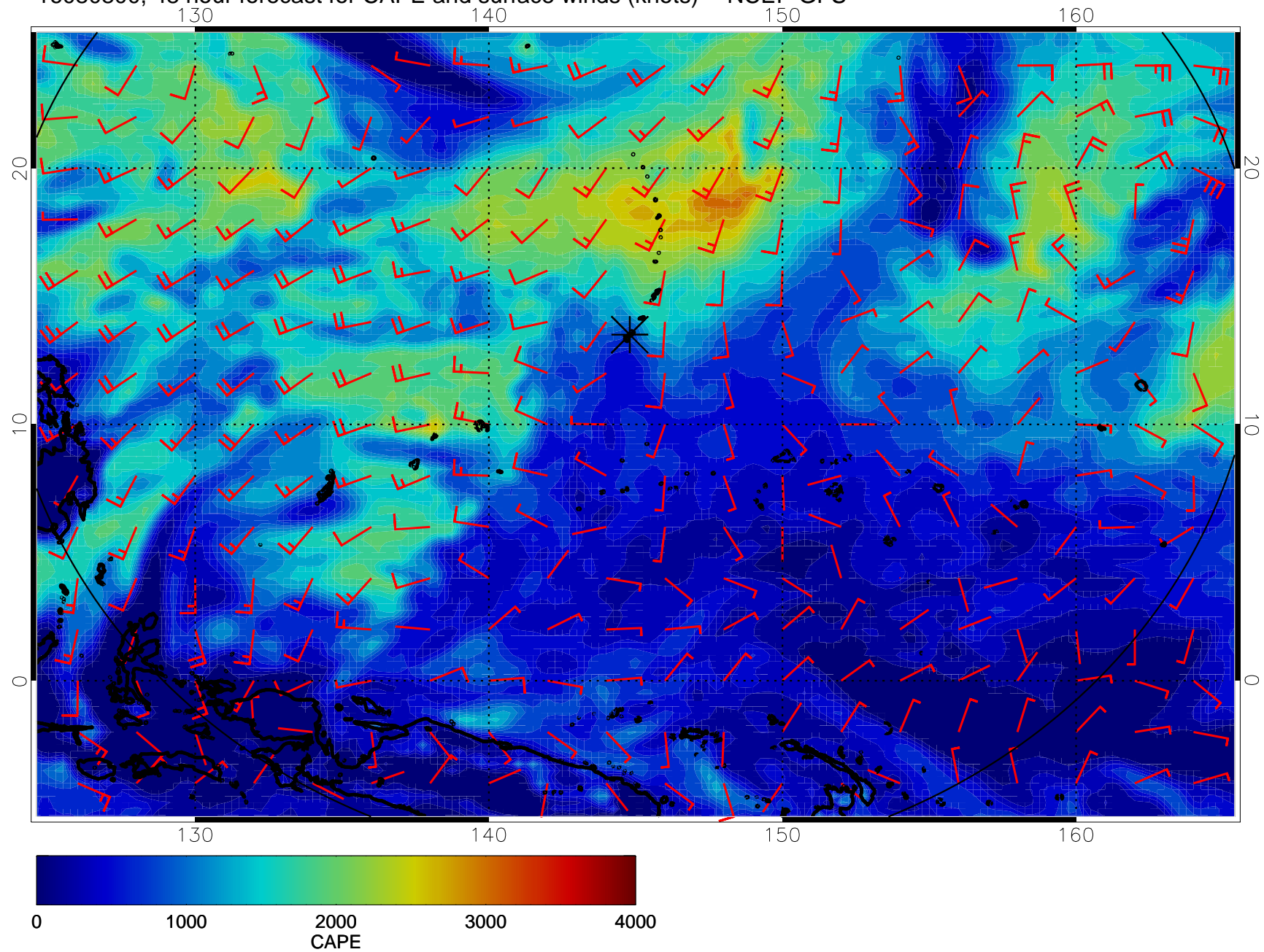




16080718, 42 hour forecast for CAPE and surface winds (knots) -- NCEP GFS

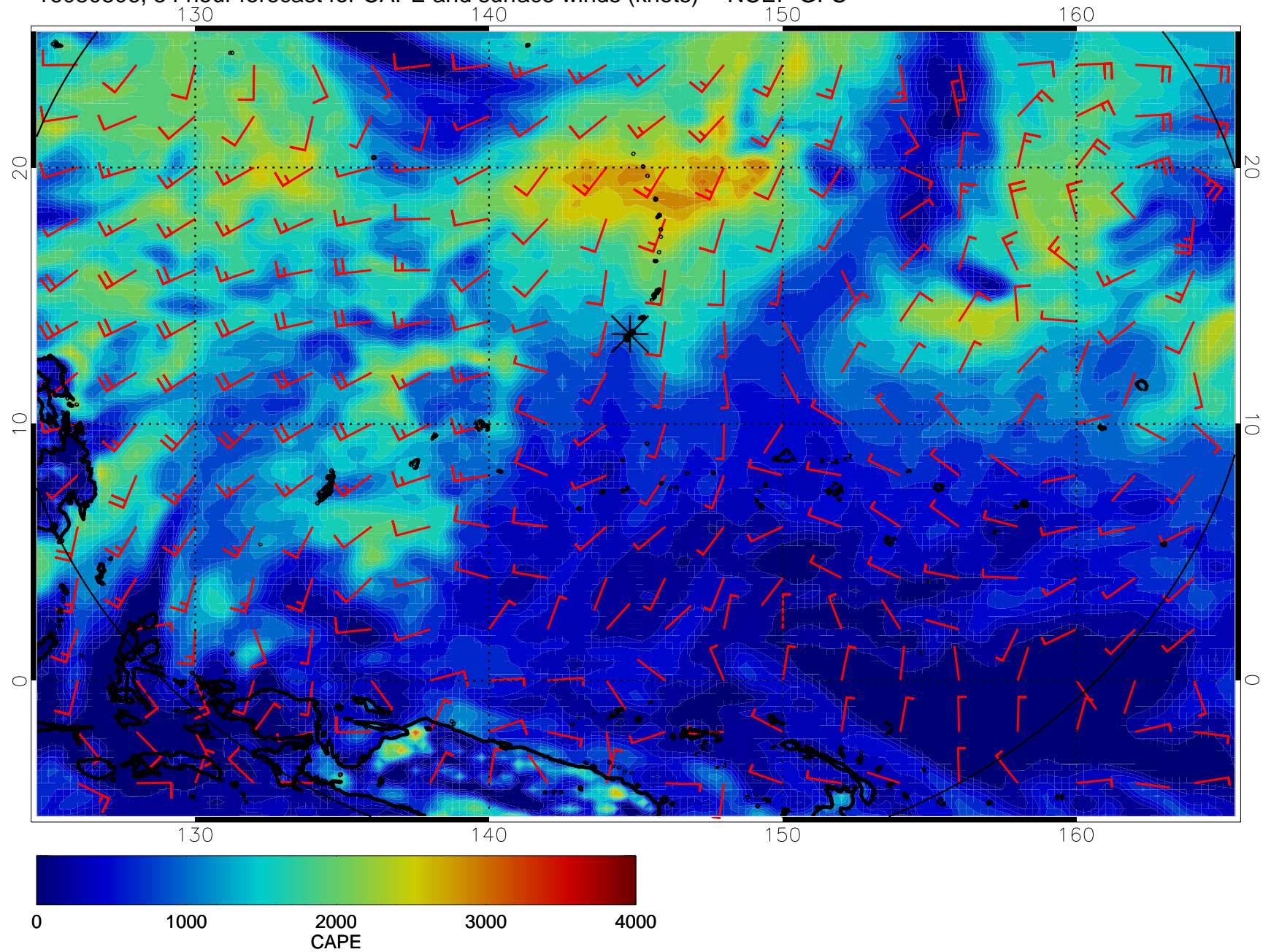


16080800, 48 hour forecast for CAPE and surface winds (knots) -- NCEP GFS

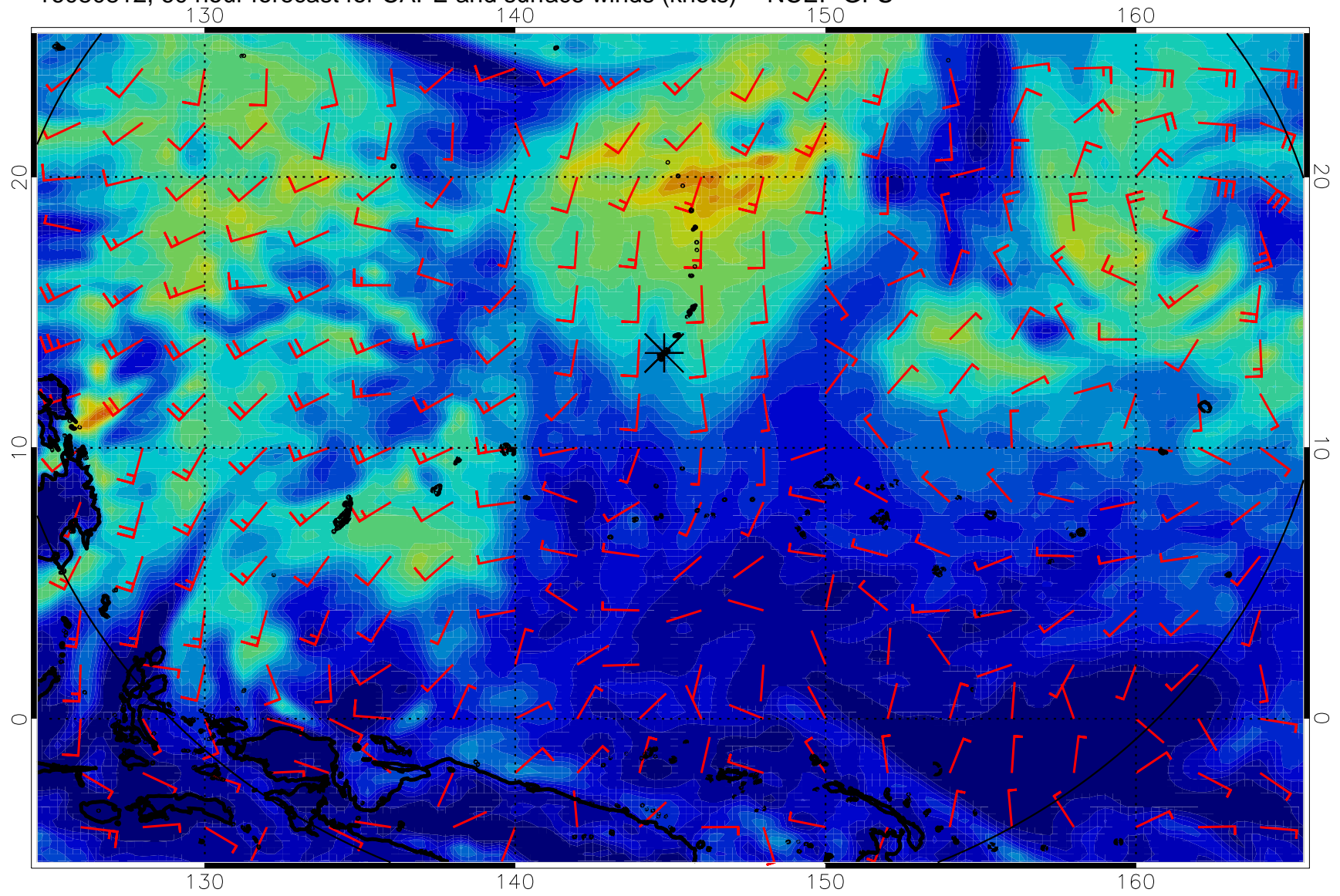




16080806, 54 hour forecast for CAPE and surface winds (knots) -- NCEP GFS

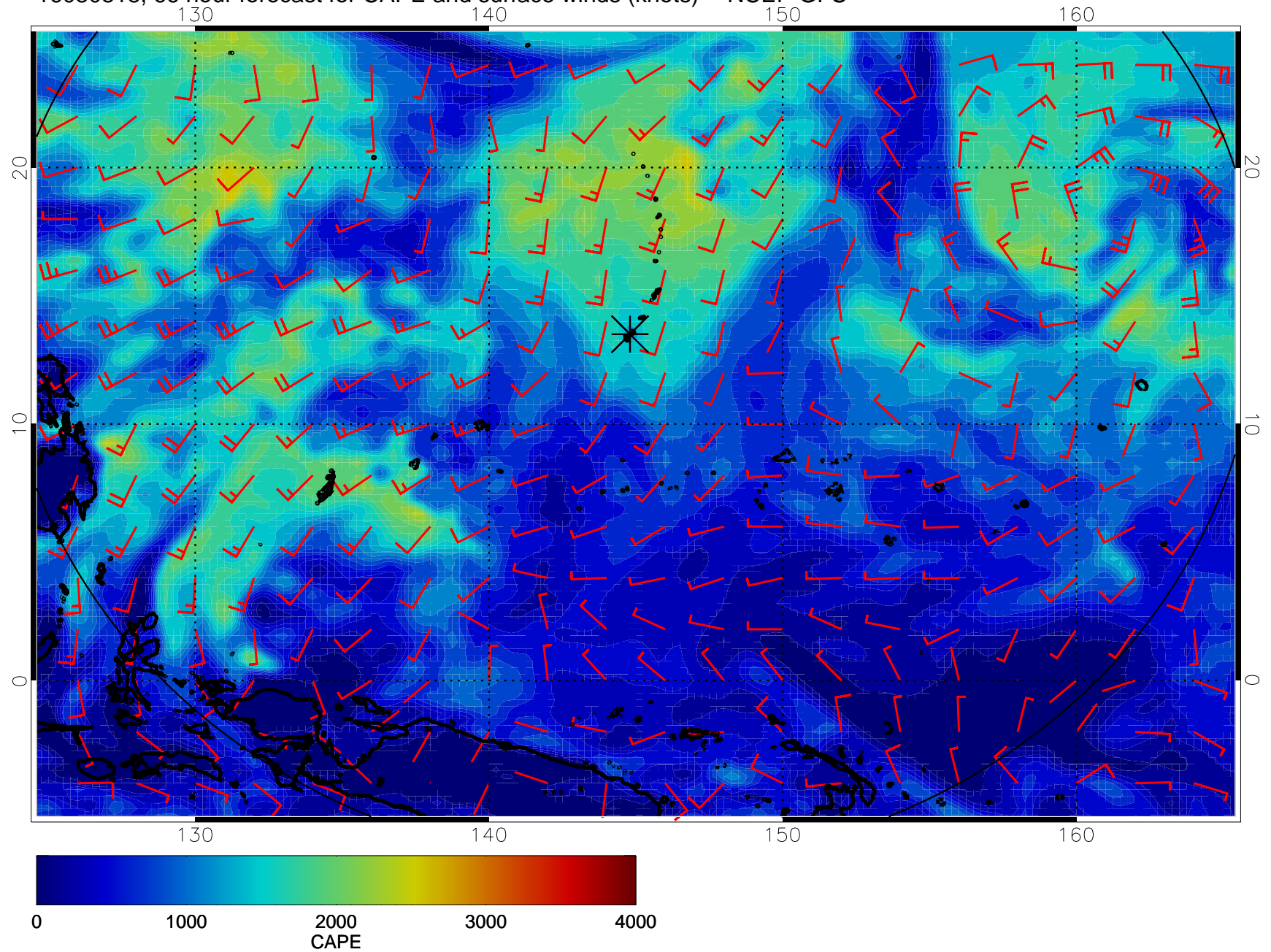


16080812, 60 hour forecast for CAPE and surface winds (knots) -- NCEP GFS

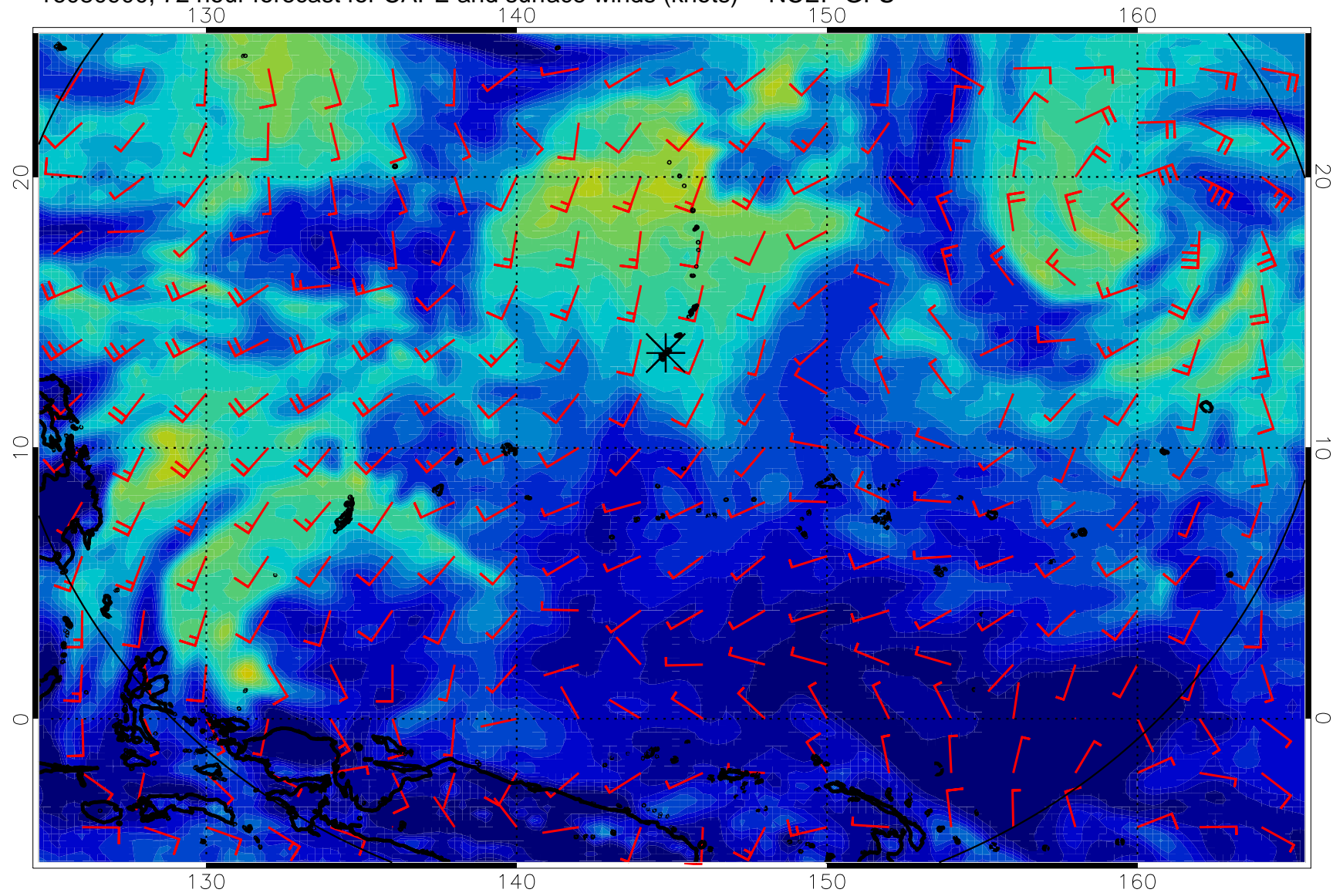




16080818, 66 hour forecast for CAPE and surface winds (knots) -- NCEP GFS

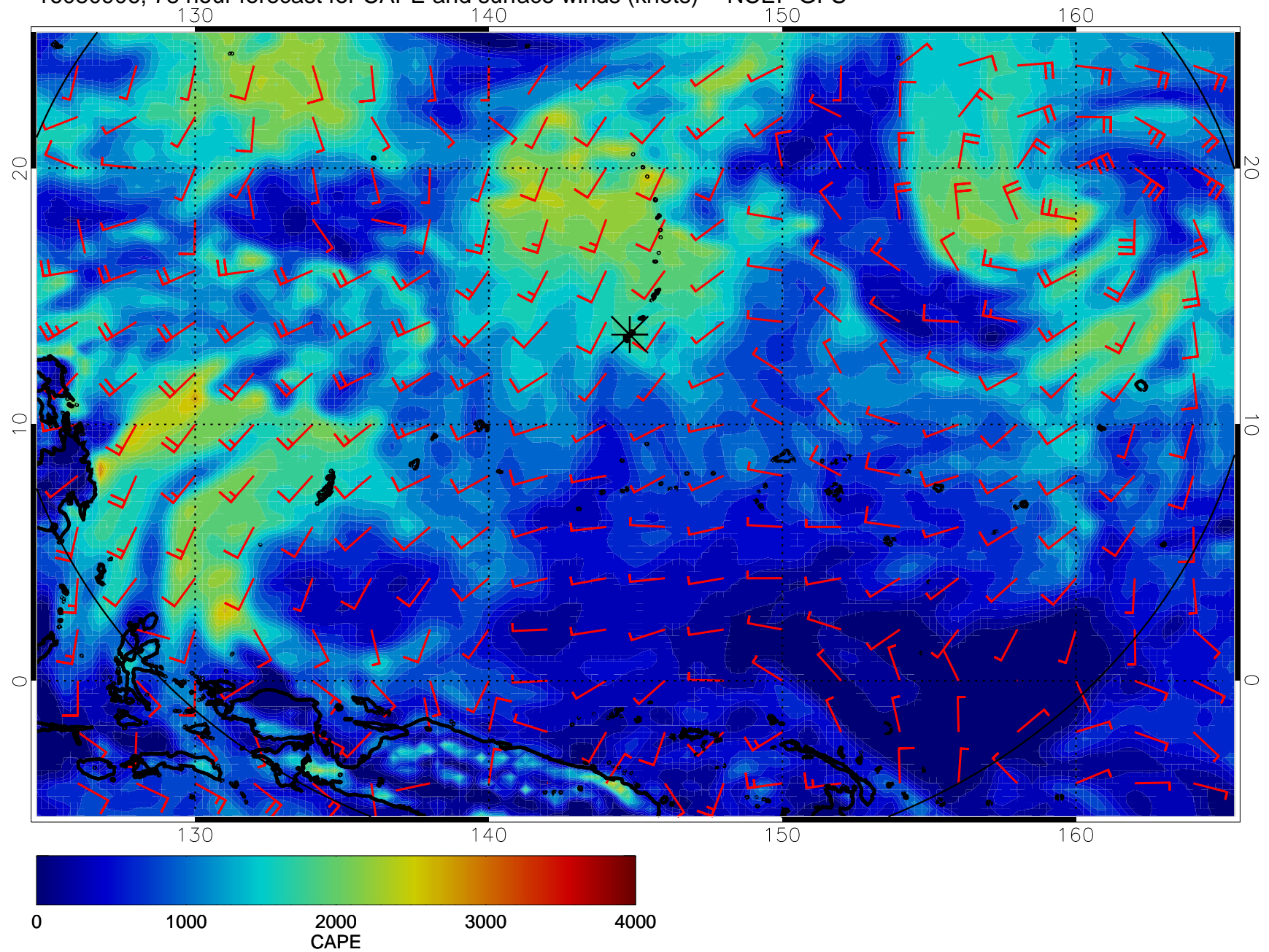


16080900, 72 hour forecast for CAPE and surface winds (knots) -- NCEP GFS

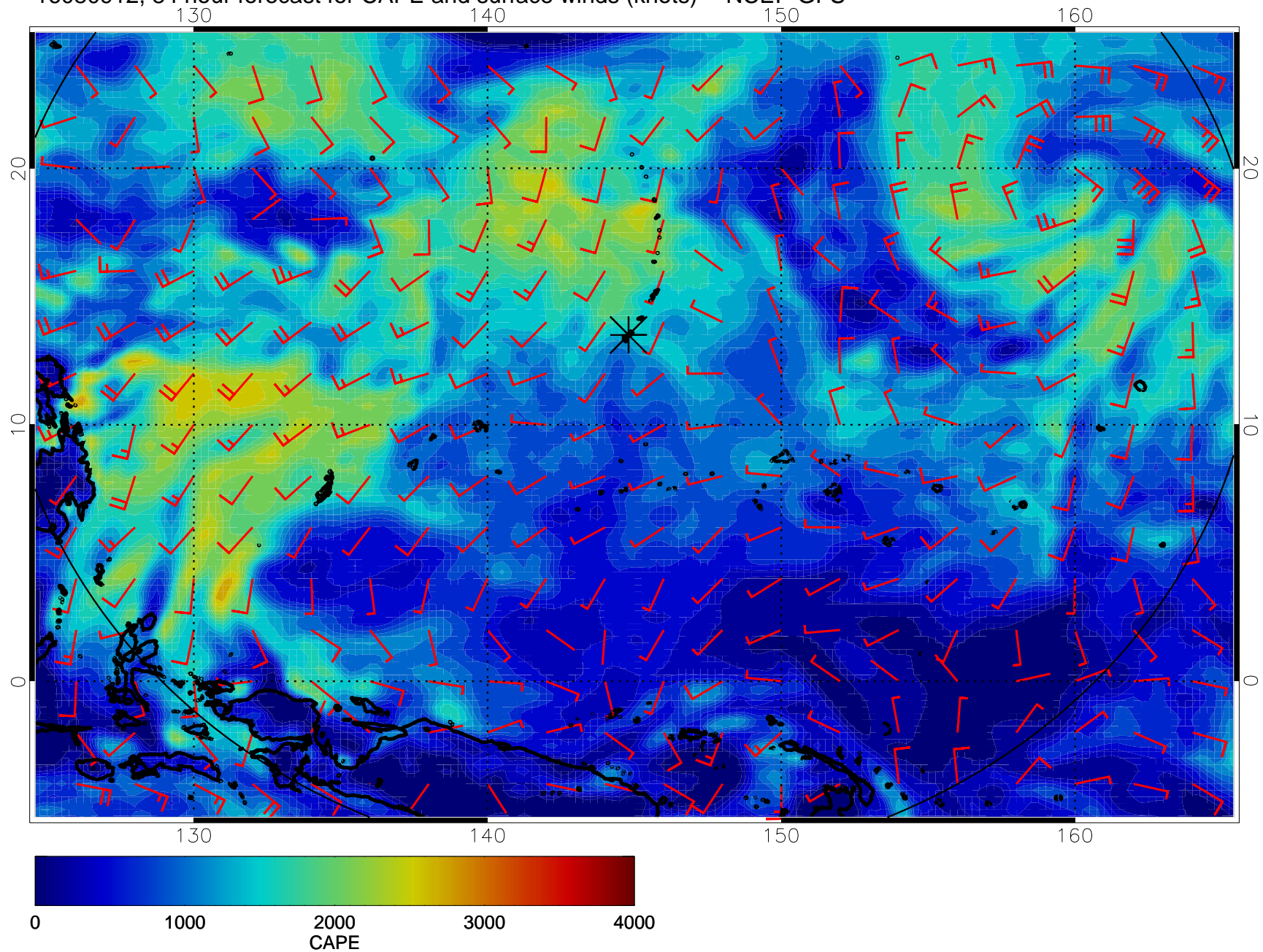




16080906, 78 hour forecast for CAPE and surface winds (knots) -- NCEP GFS

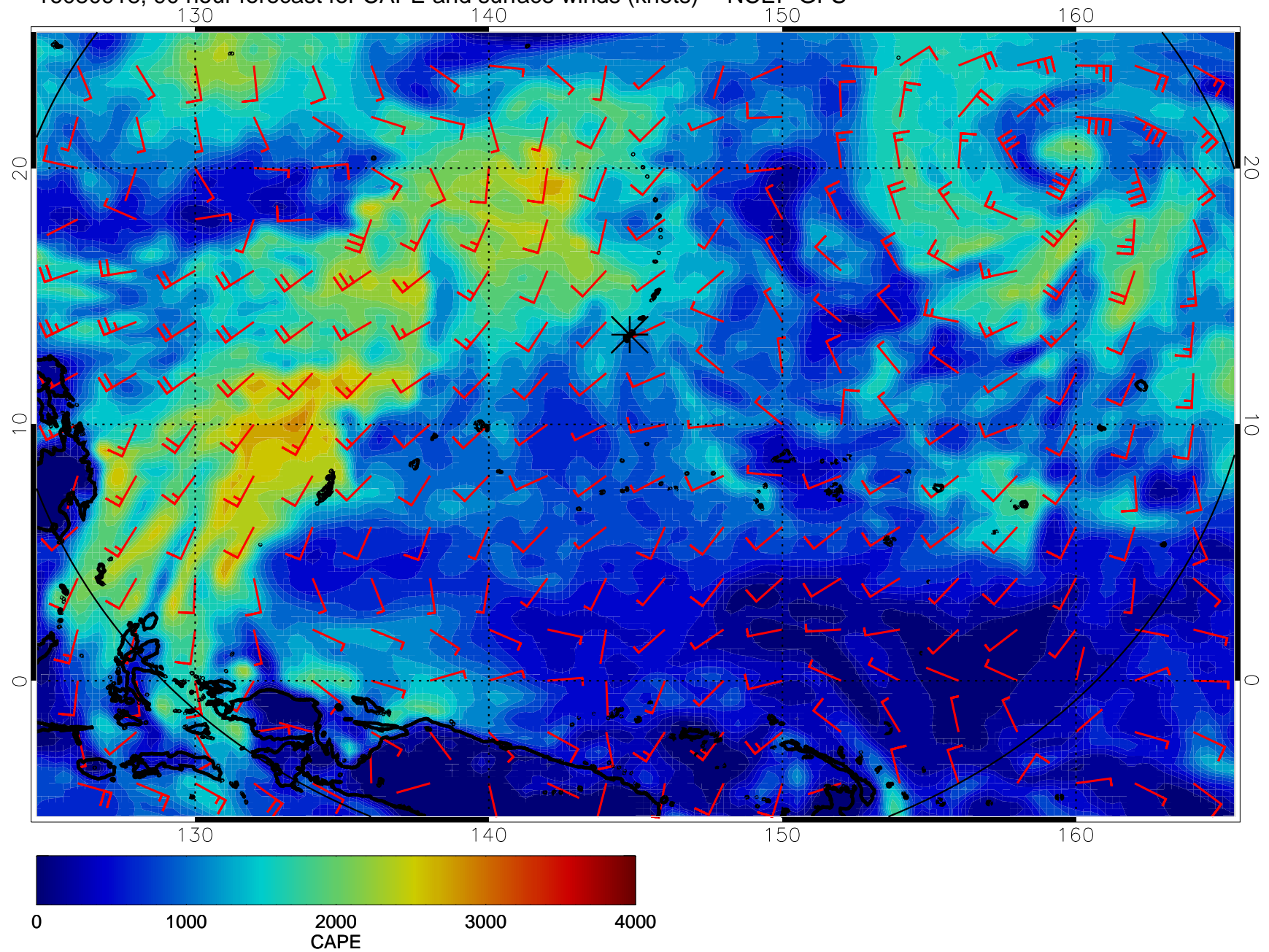


16080912, 84 hour forecast for CAPE and surface winds (knots) -- NCEP GFS

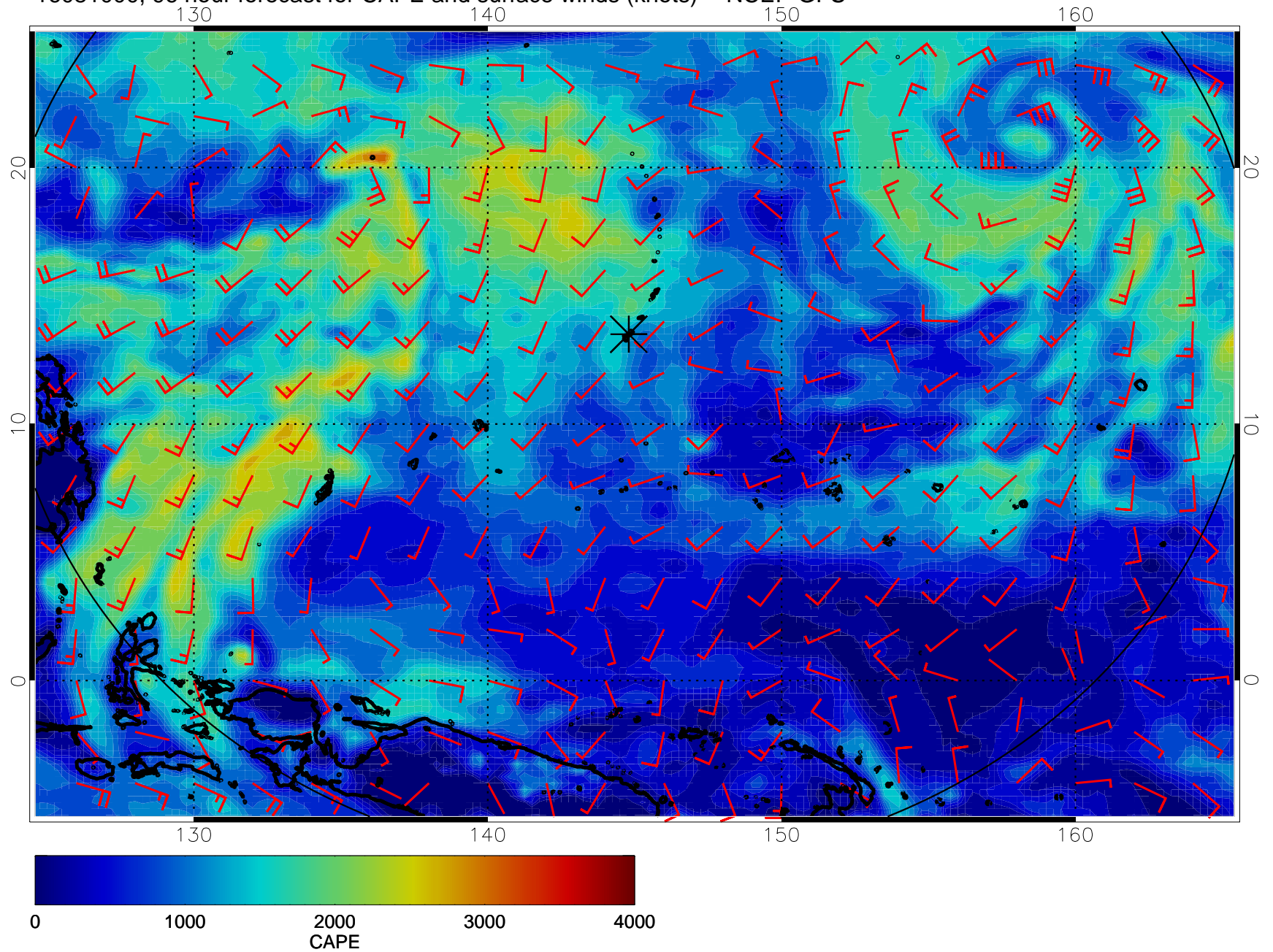




16080918, 90 hour forecast for CAPE and surface winds (knots) -- NCEP GFS

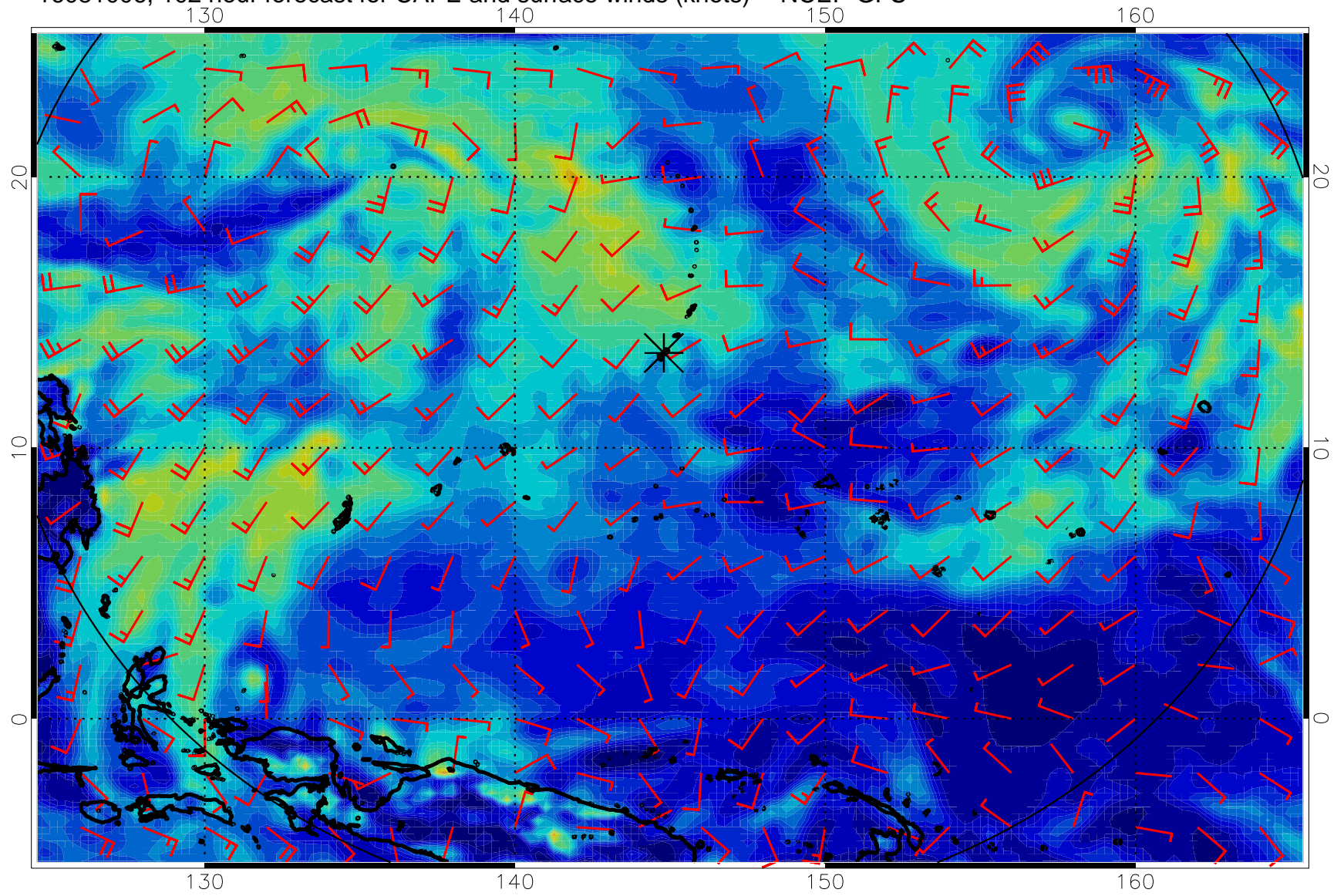


16081000, 96 hour forecast for CAPE and surface winds (knots) -- NCEP GFS

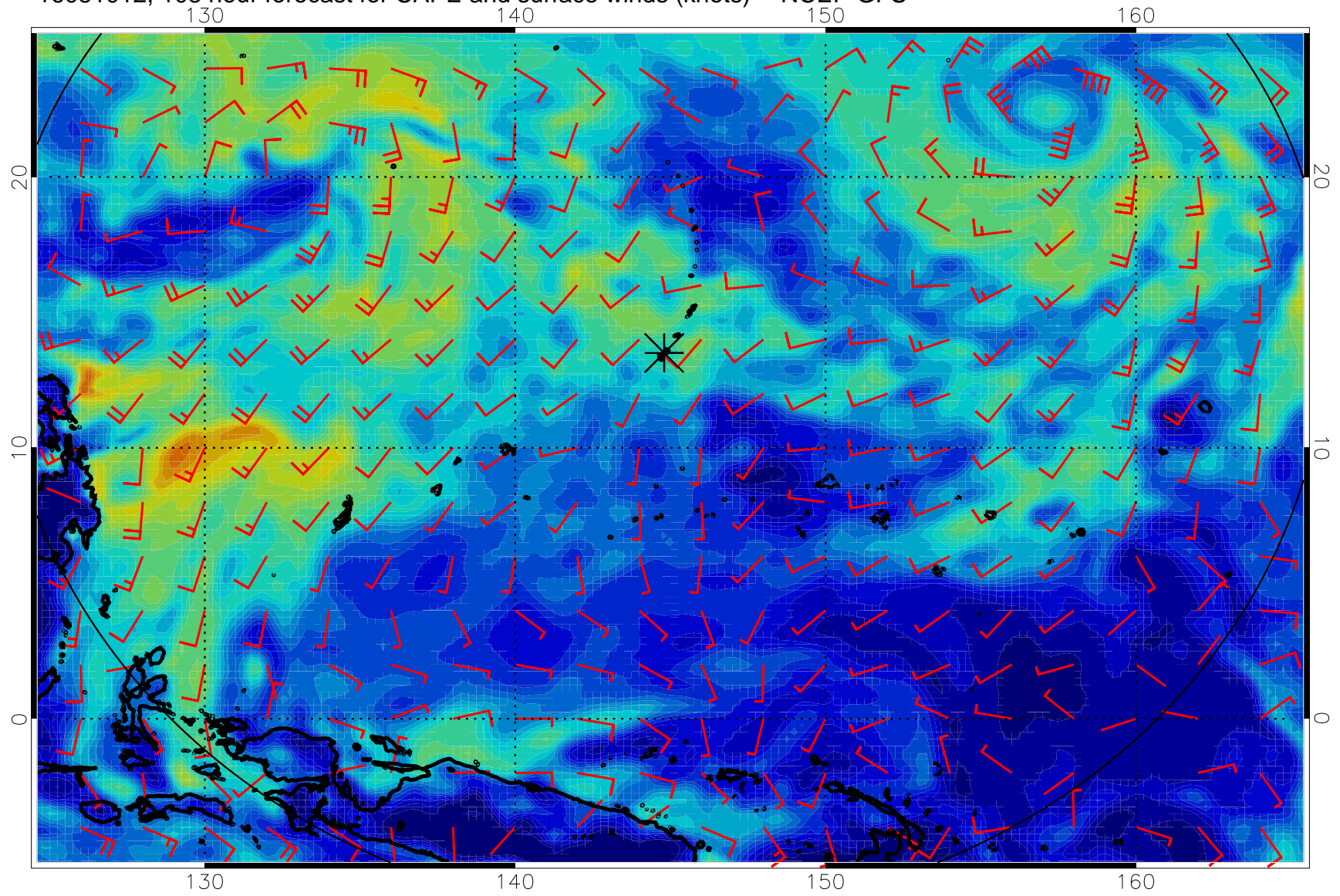




16081006, 102 hour forecast for CAPE and surface winds (knots) -- NCEP GFS

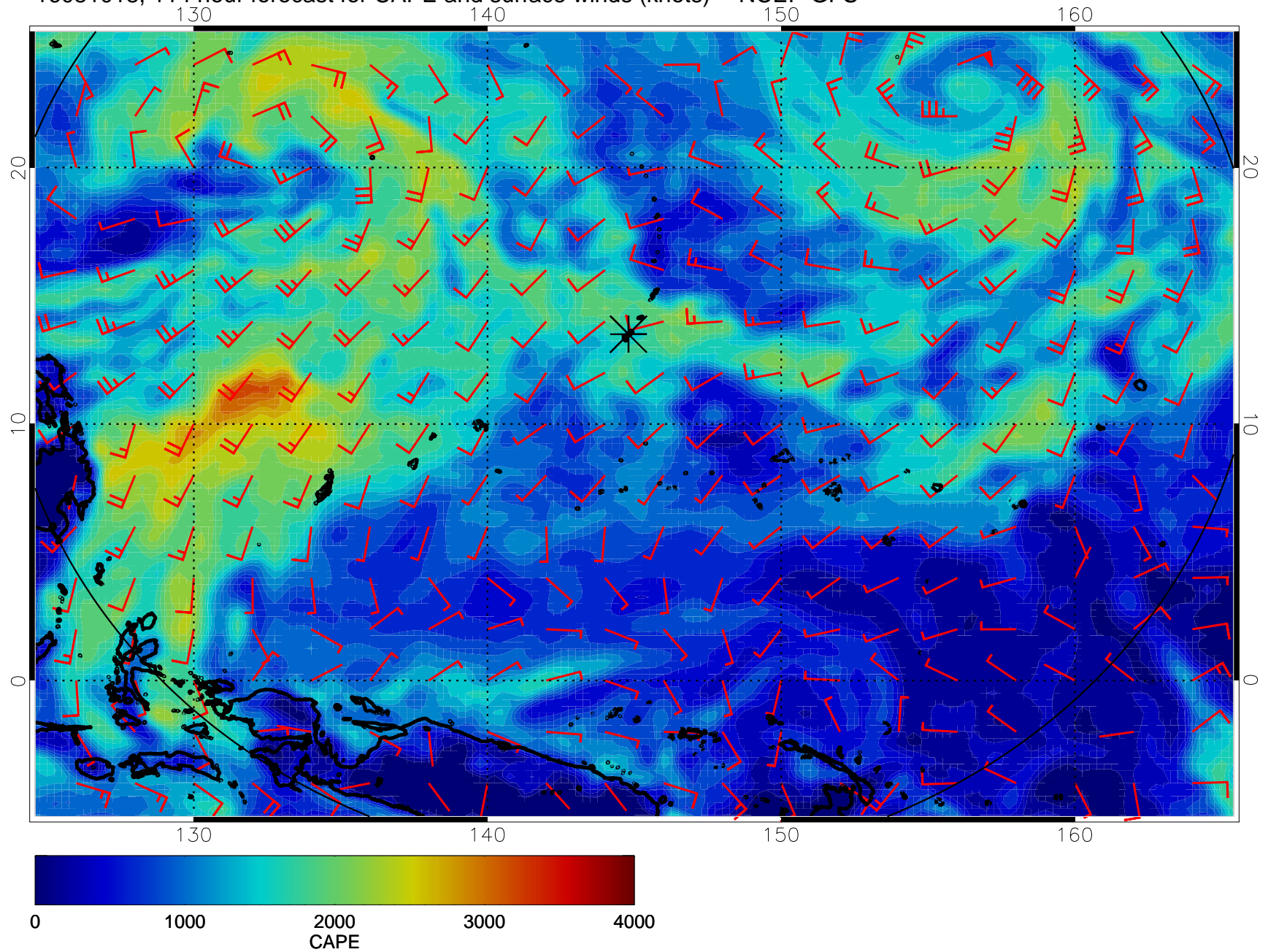


16081012, 108 hour forecast for CAPE and surface winds (knots) -- NCEP GFS





16081018, 114 hour forecast for CAPE and surface winds (knots) -- NCEP GFS



16081100, 120 hour forecast for CAPE and surface winds (knots) -- NCEP GFS

