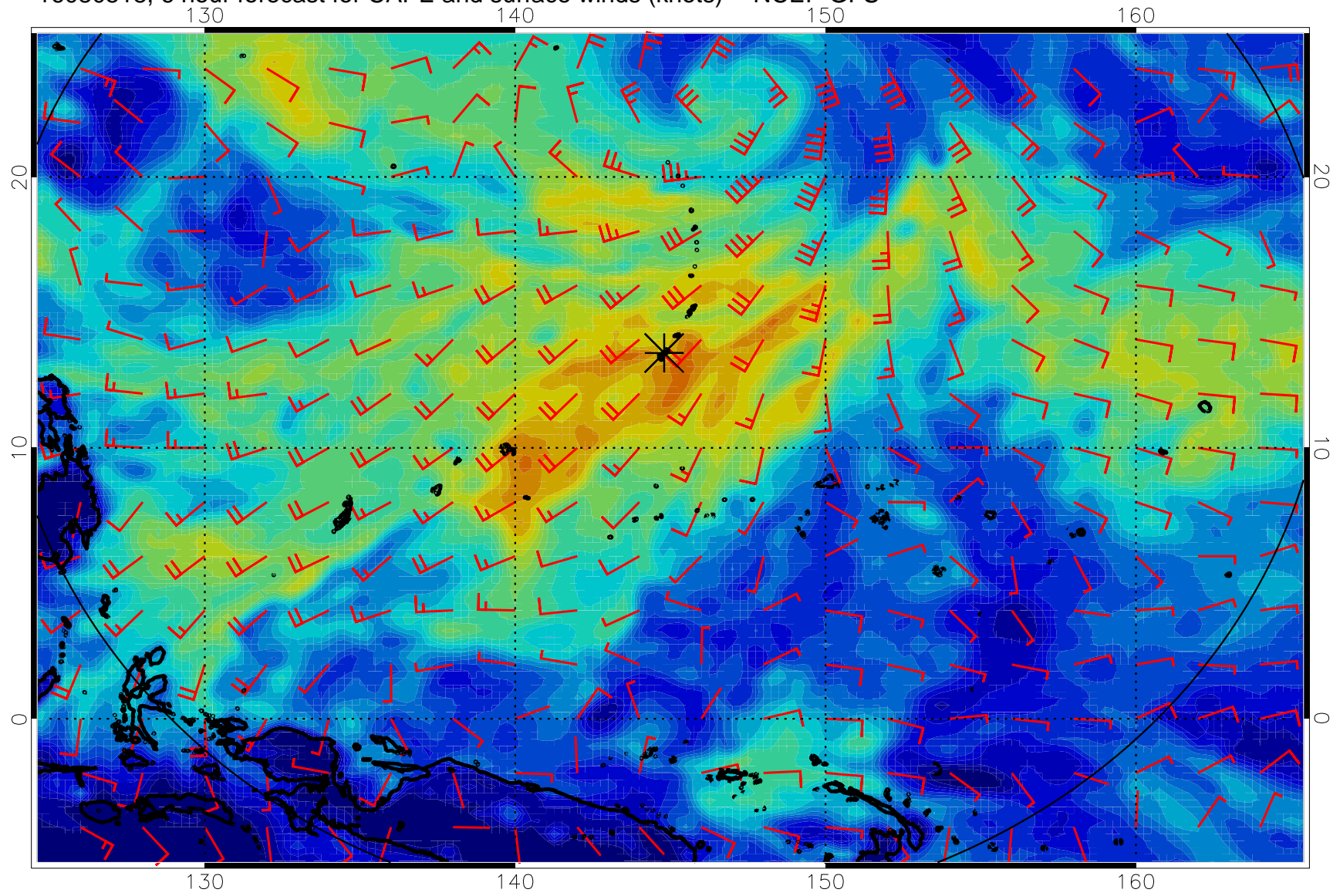
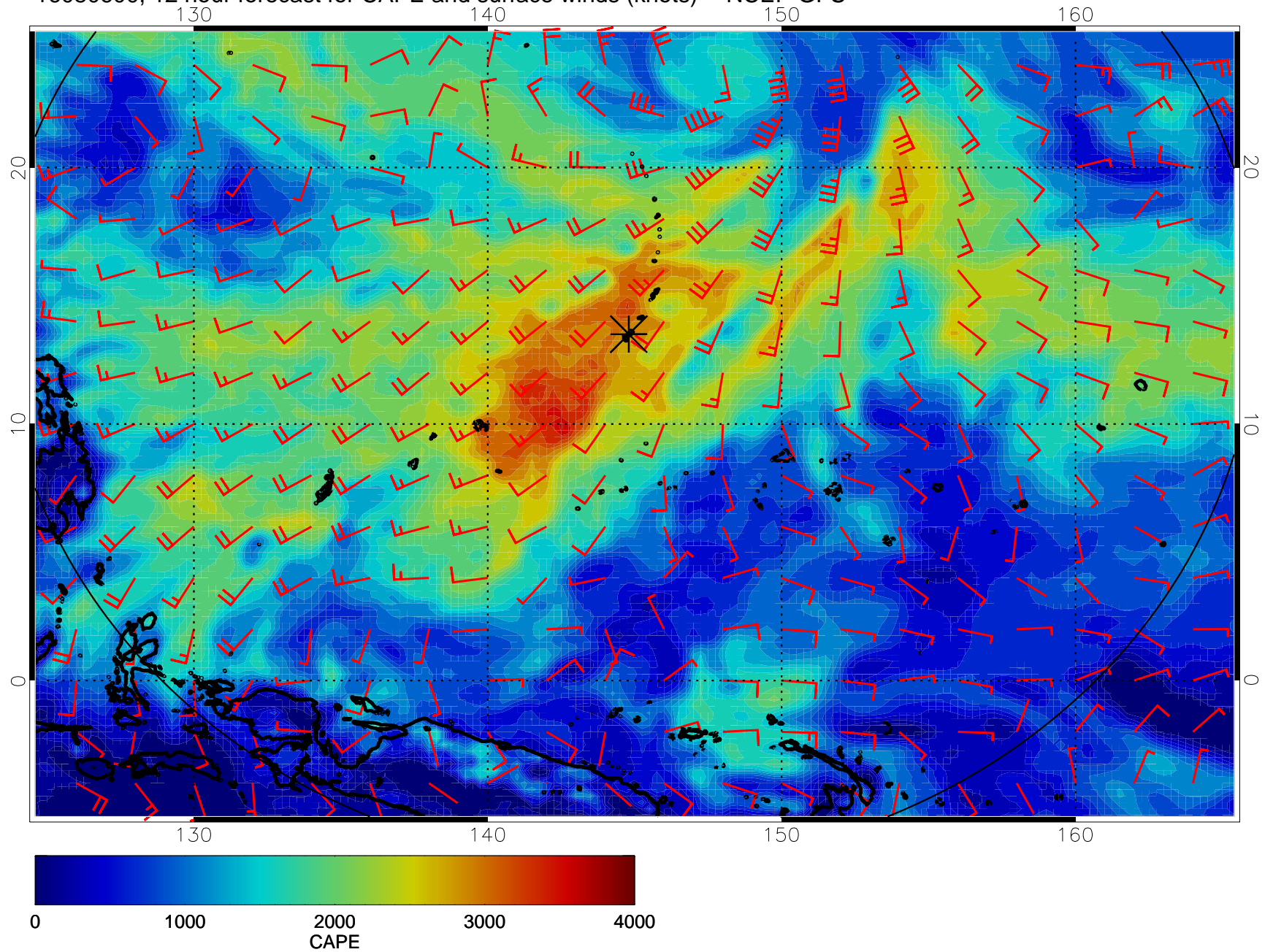


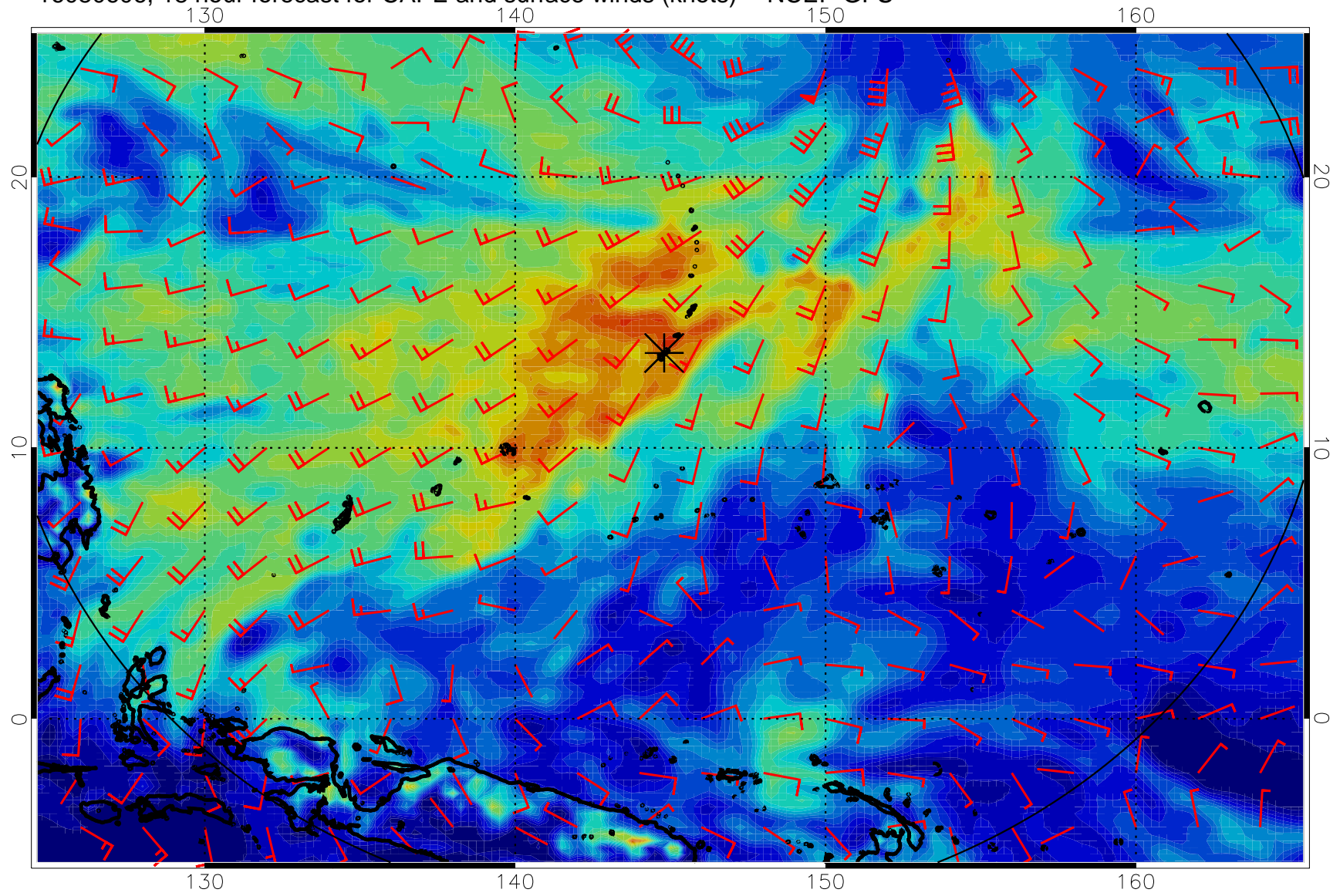
16080518, 6 hour forecast for CAPE and surface winds (knots) -- NCEP GFS



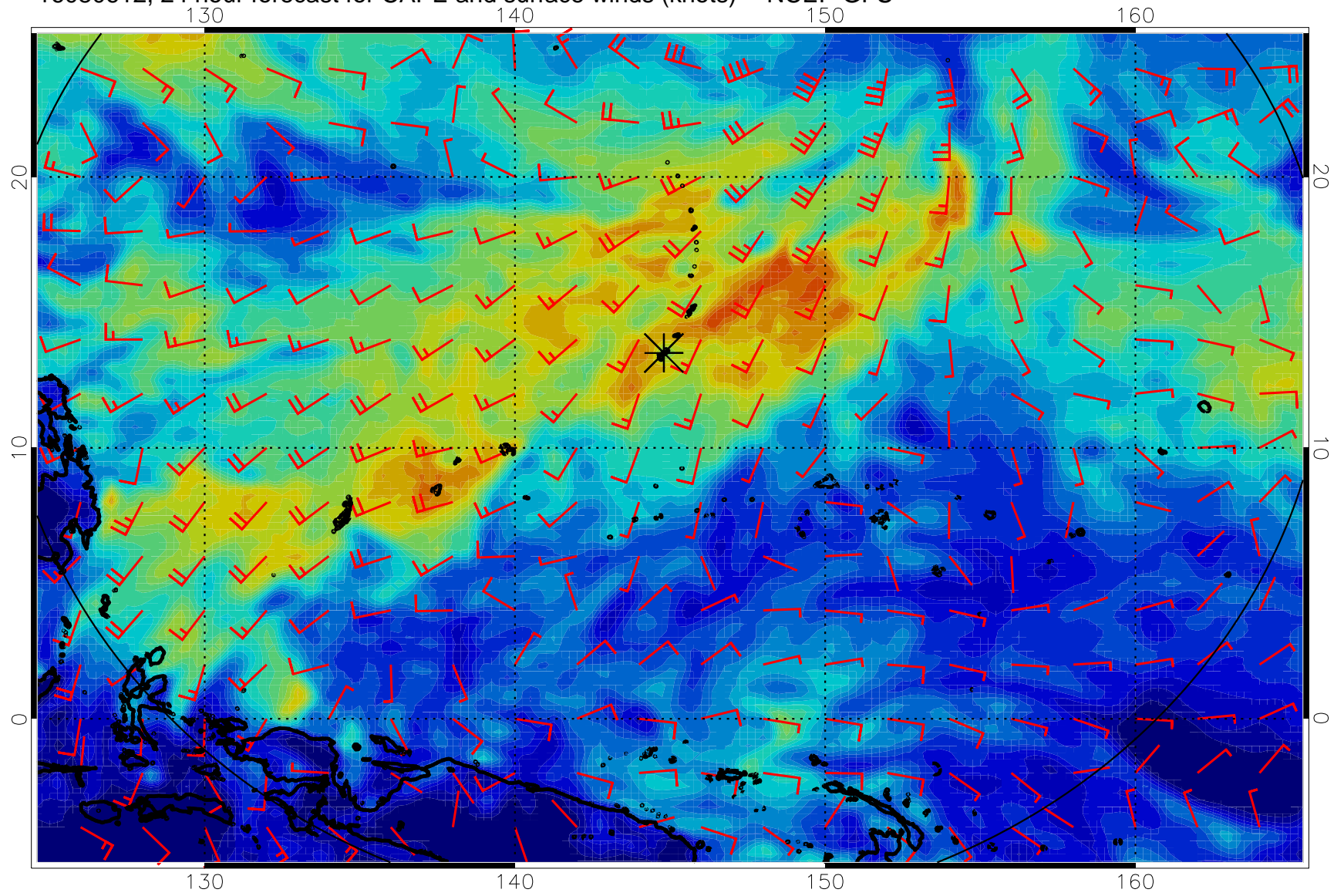
16080600, 12 hour forecast for CAPE and surface winds (knots) -- NCEP GFS



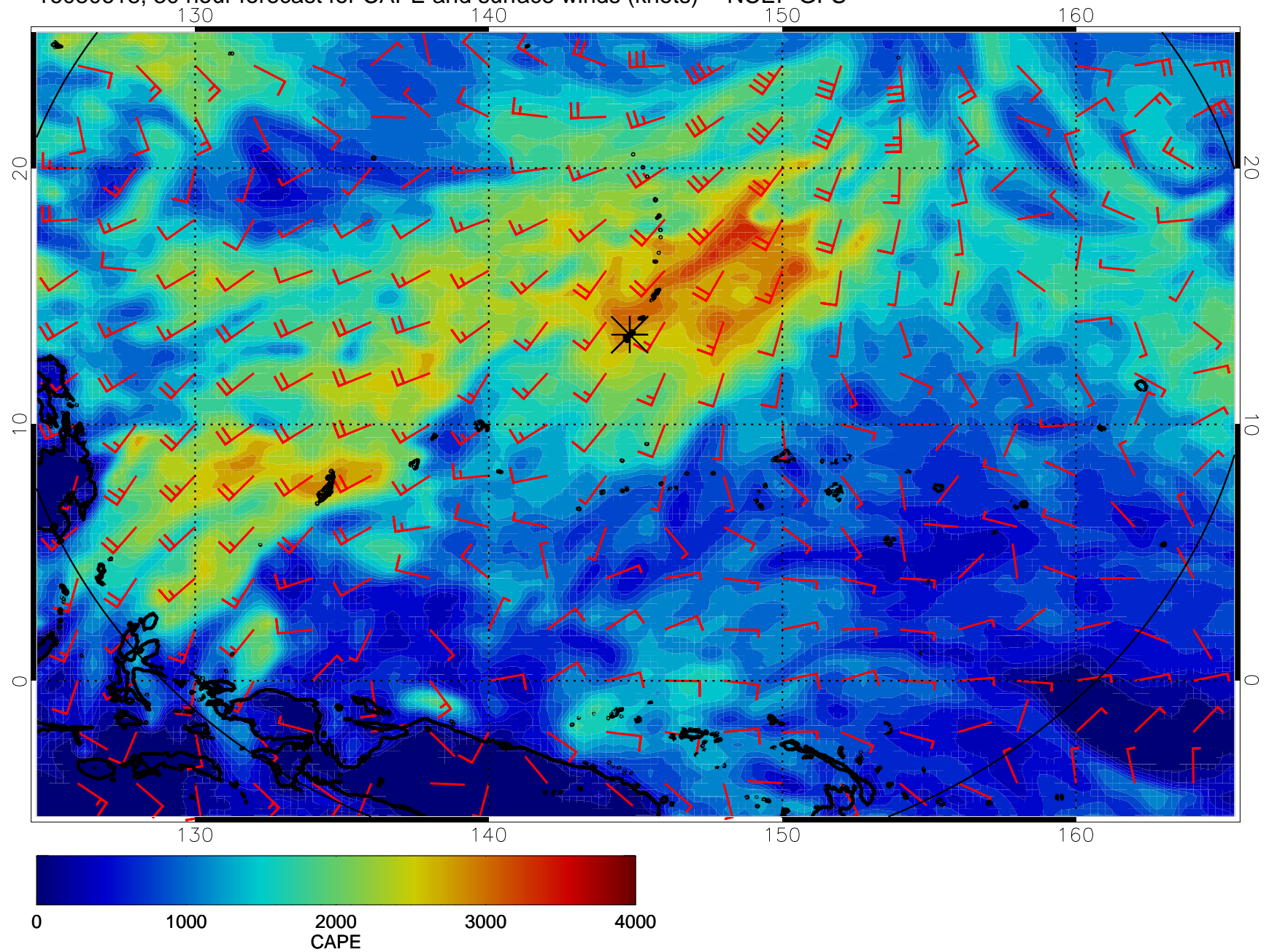
16080606, 18 hour forecast for CAPE and surface winds (knots) -- NCEP GFS



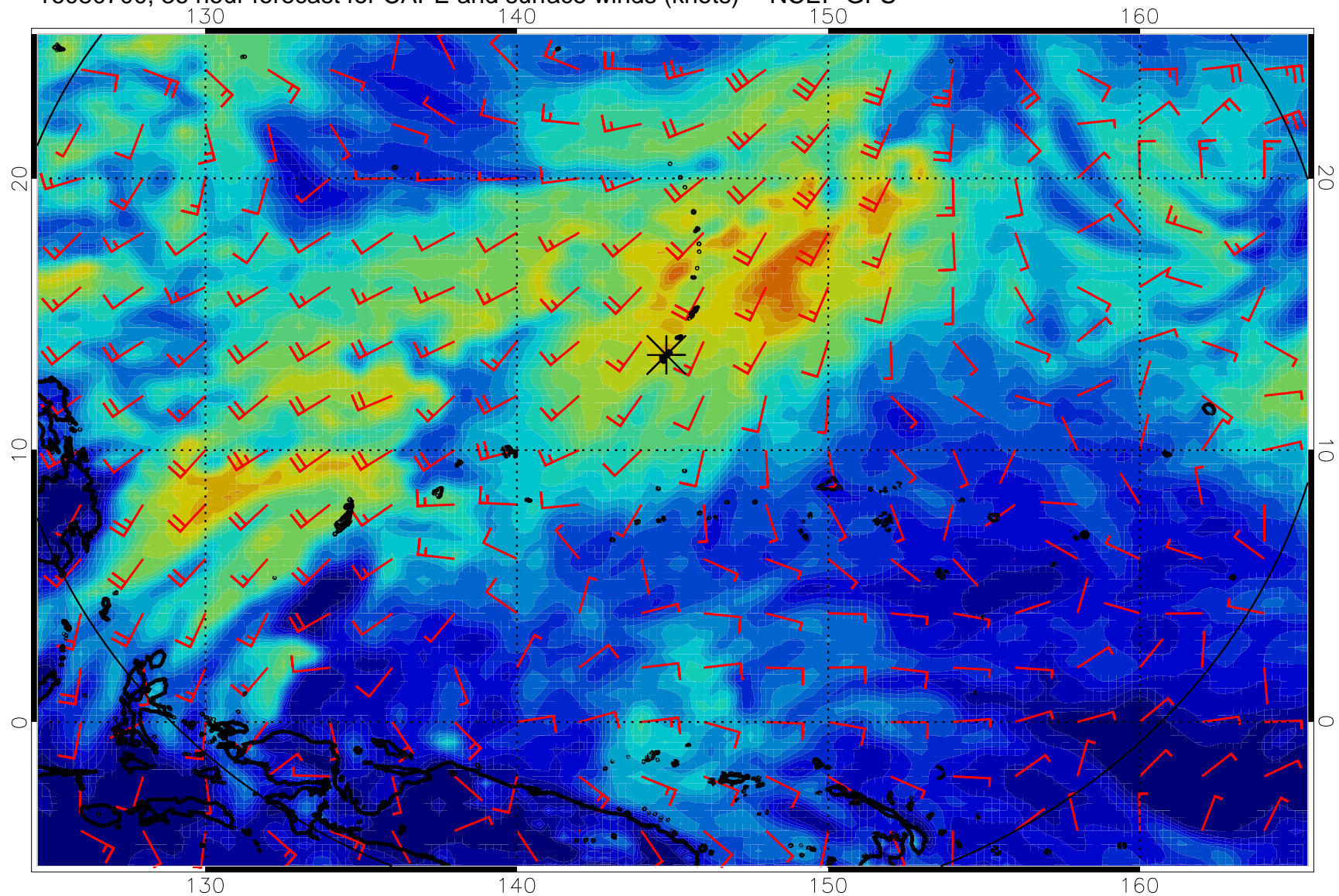
16080612, 24 hour forecast for CAPE and surface winds (knots) -- NCEP GFS



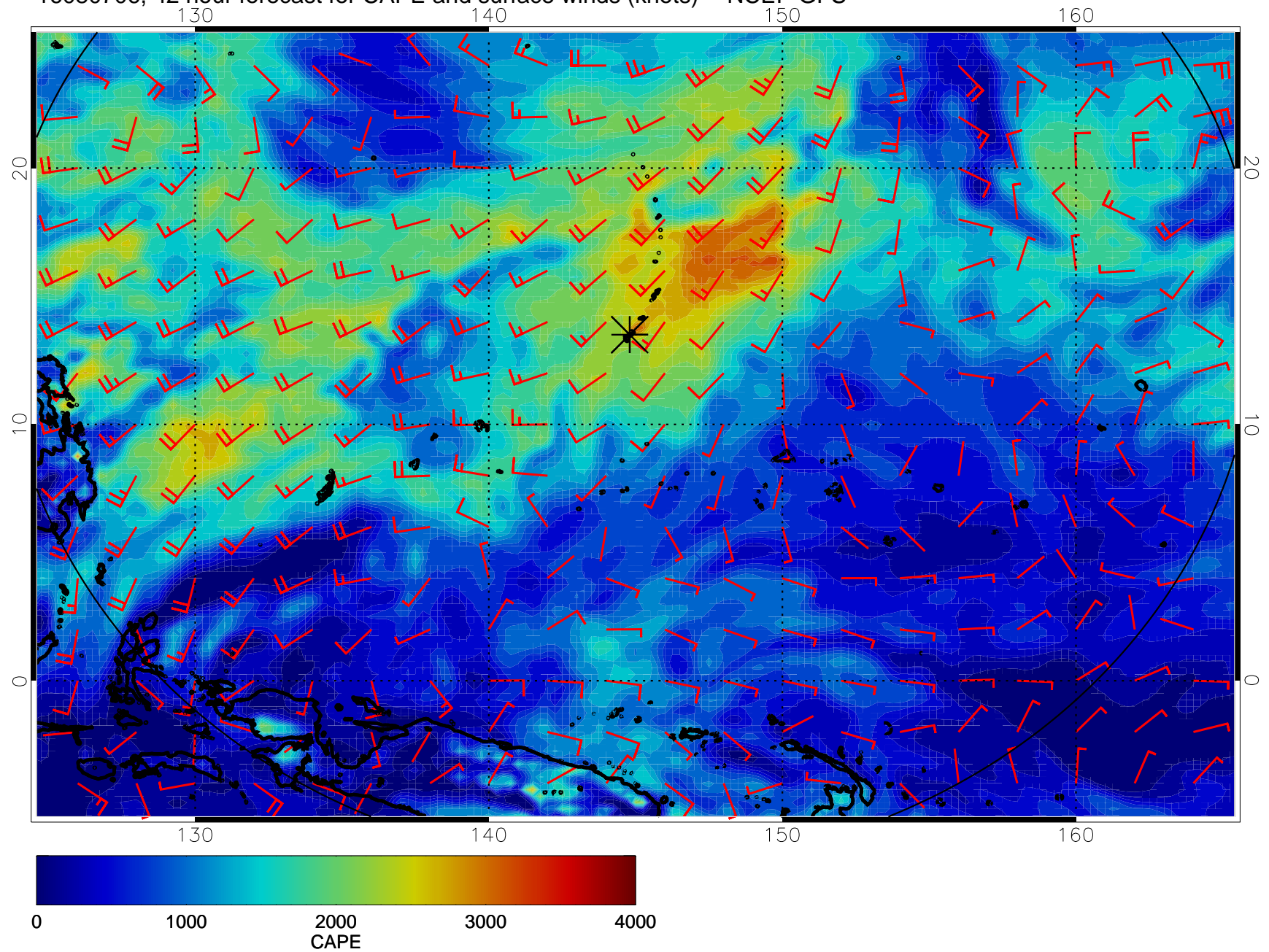
16080618, 30 hour forecast for CAPE and surface winds (knots) -- NCEP GFS



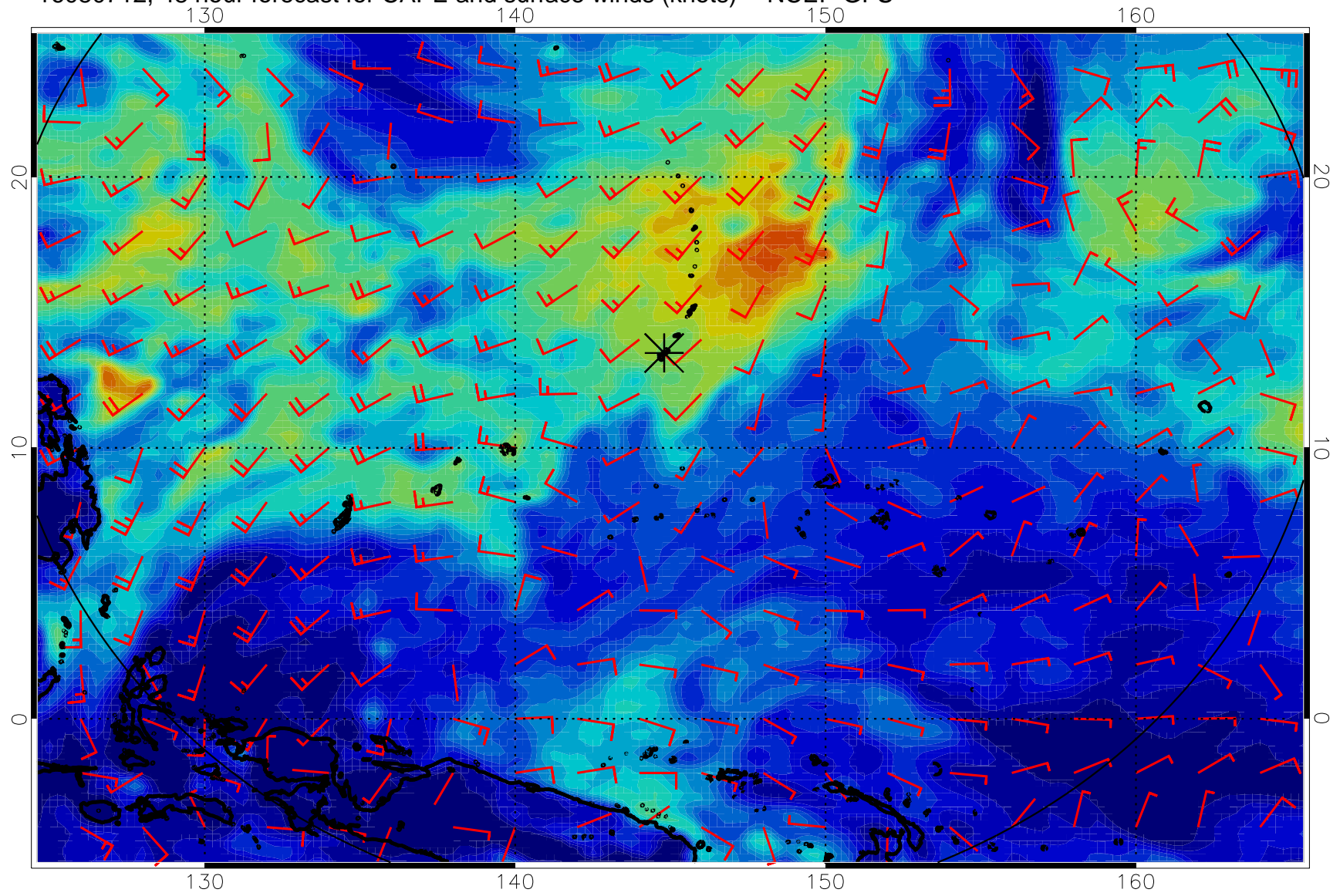
16080700, 36 hour forecast for CAPE and surface winds (knots) -- NCEP GFS



16080706, 42 hour forecast for CAPE and surface winds (knots) -- NCEP GFS

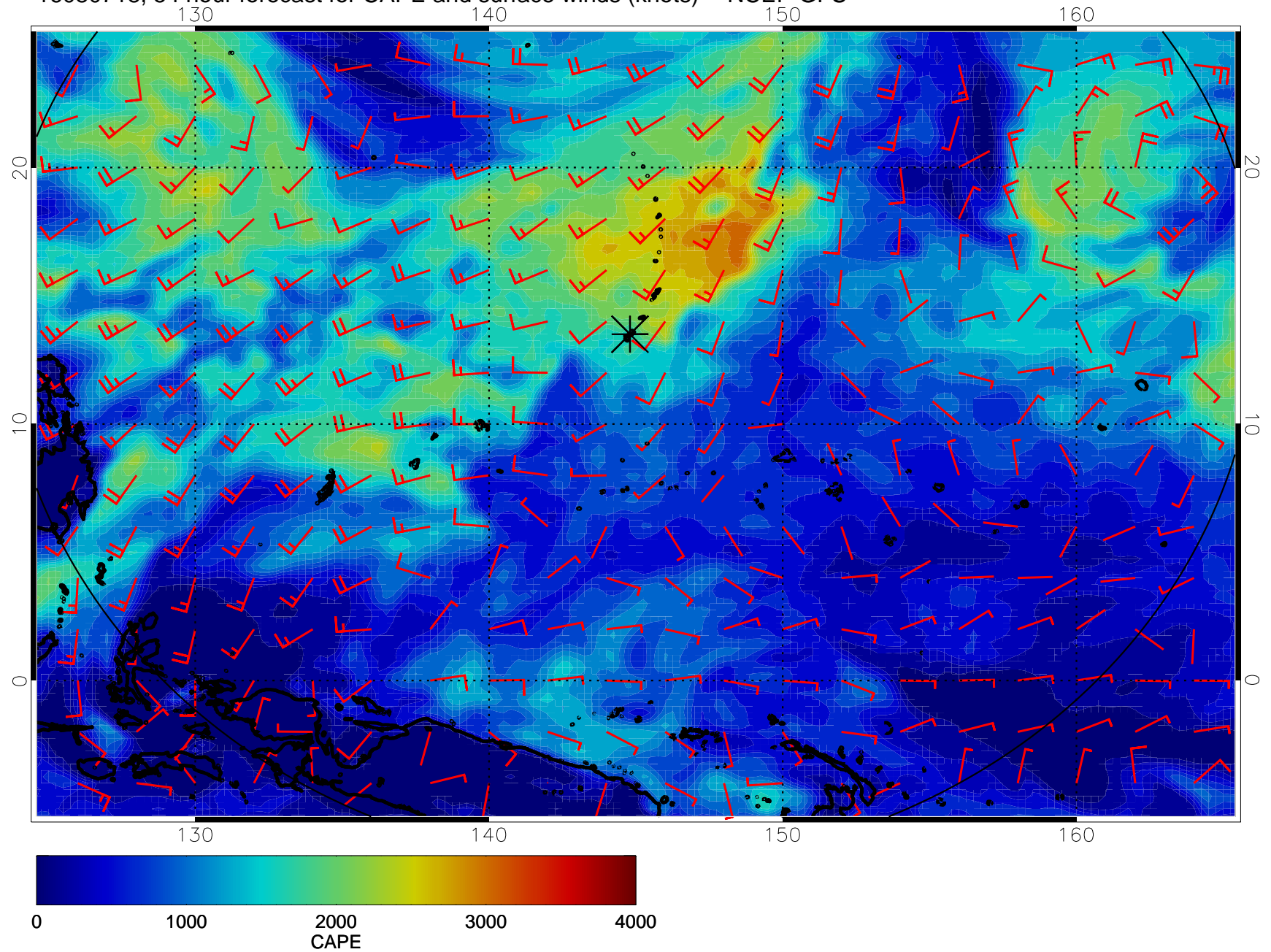


16080712, 48 hour forecast for CAPE and surface winds (knots) -- NCEP GFS

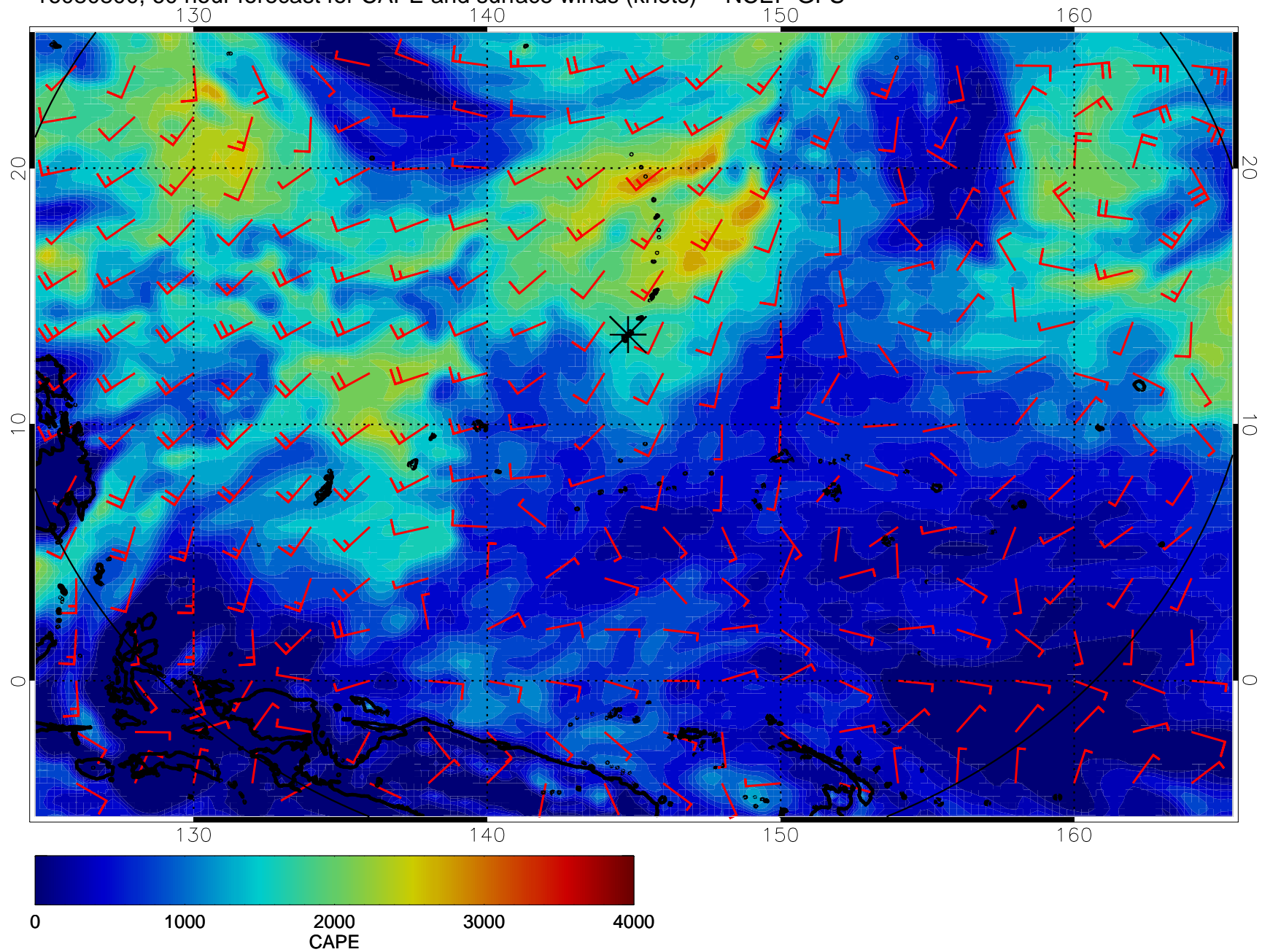




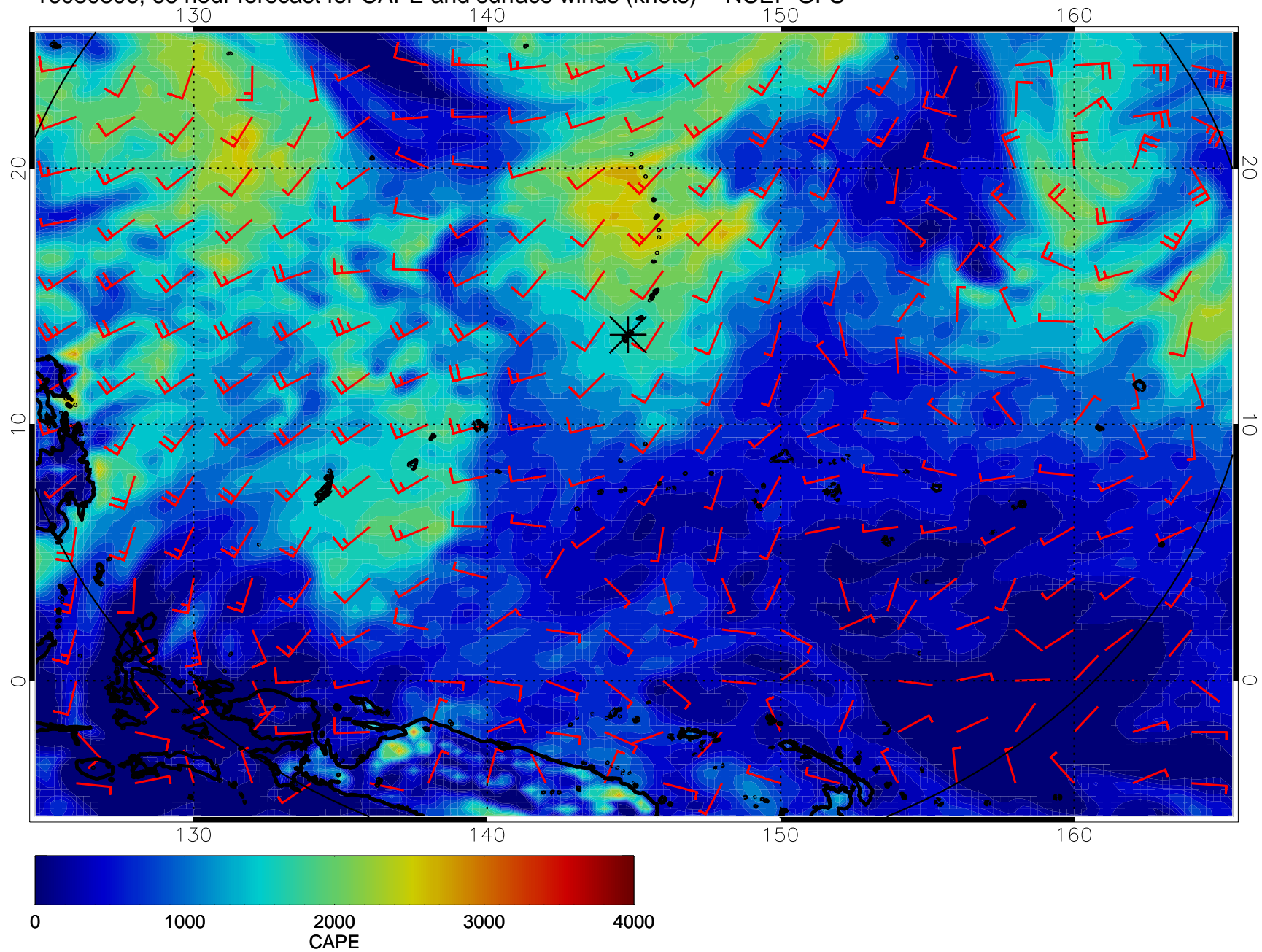
16080718, 54 hour forecast for CAPE and surface winds (knots) -- NCEP GFS



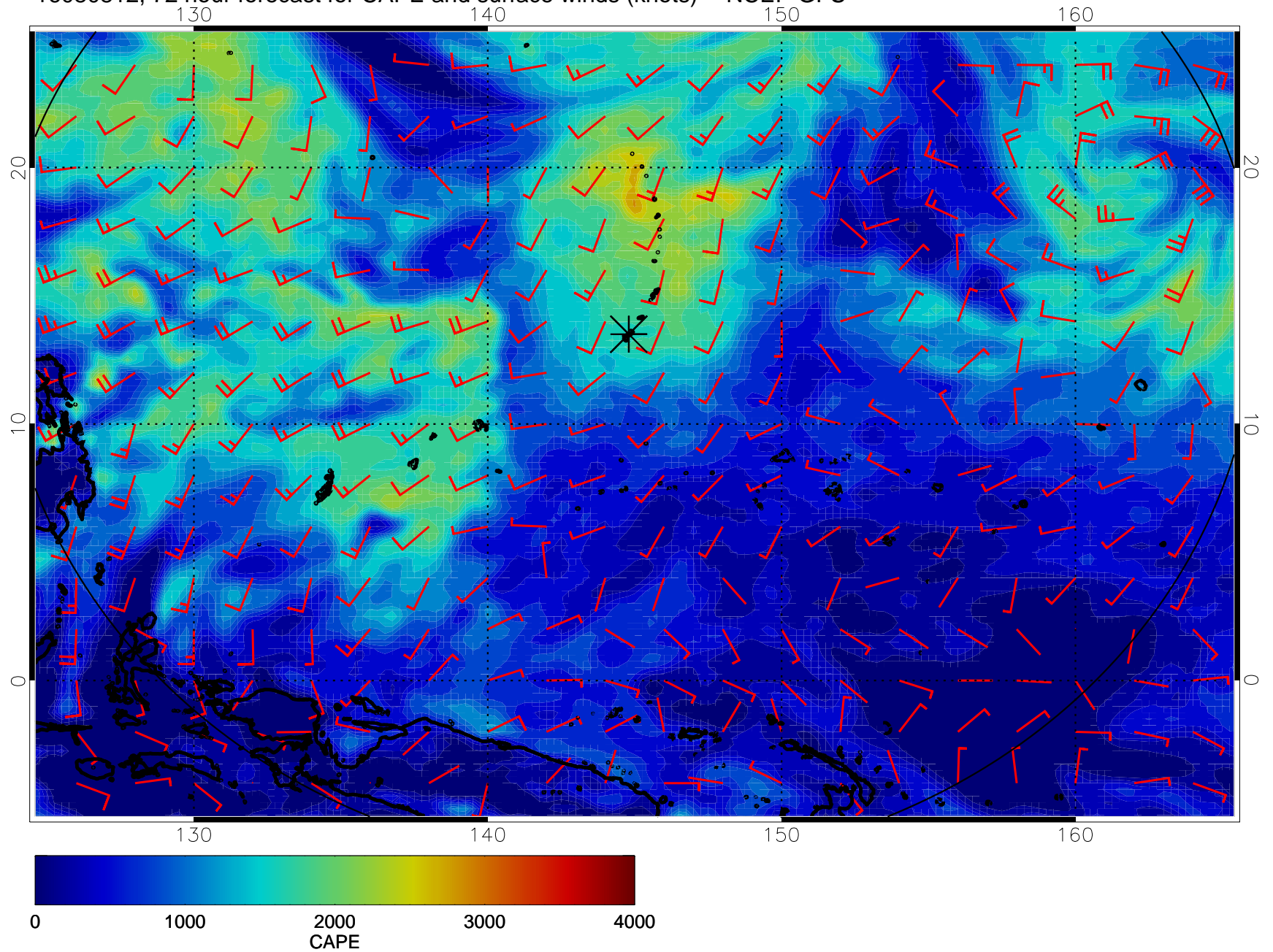
16080800, 60 hour forecast for CAPE and surface winds (knots) -- NCEP GFS



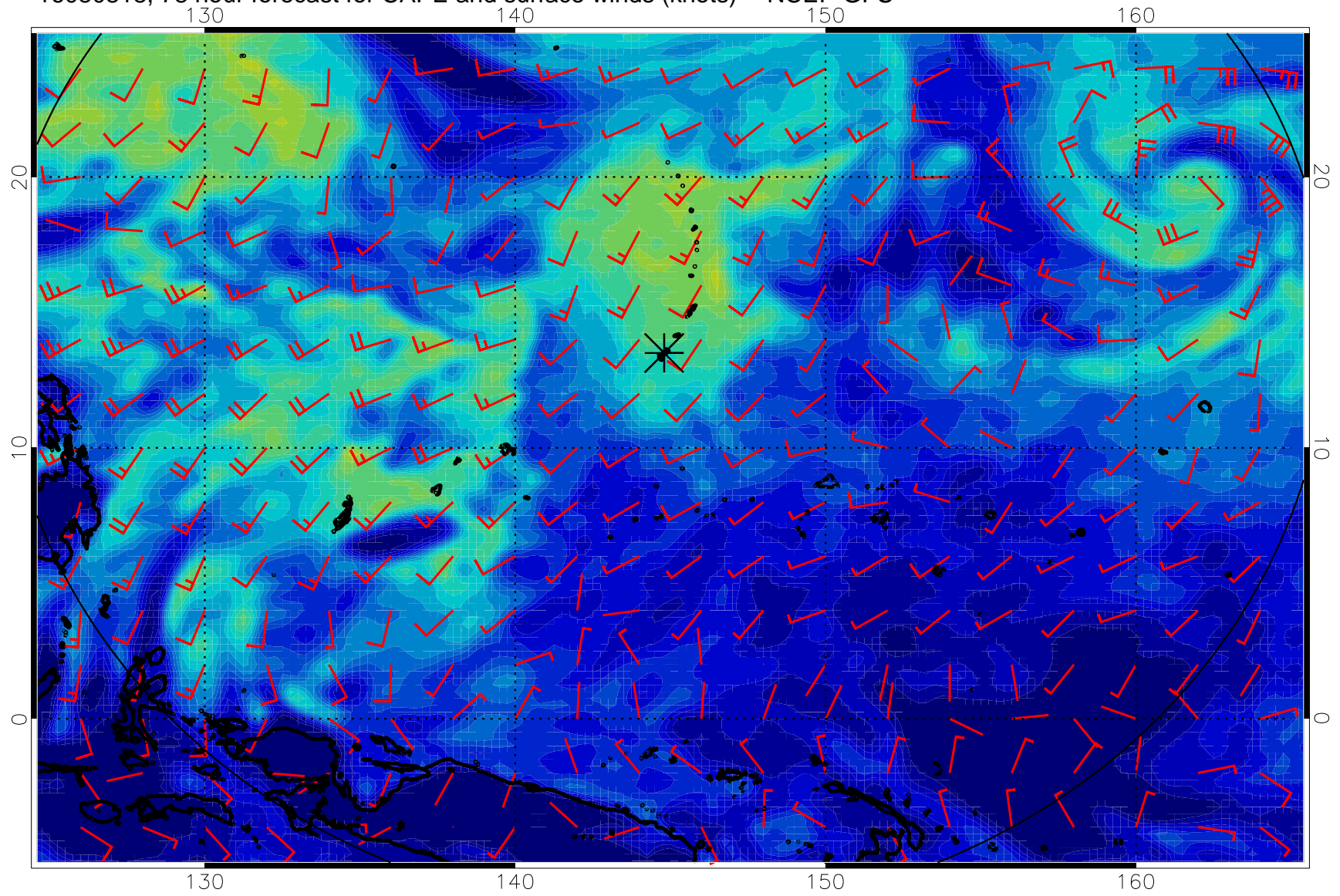
16080806, 66 hour forecast for CAPE and surface winds (knots) -- NCEP GFS



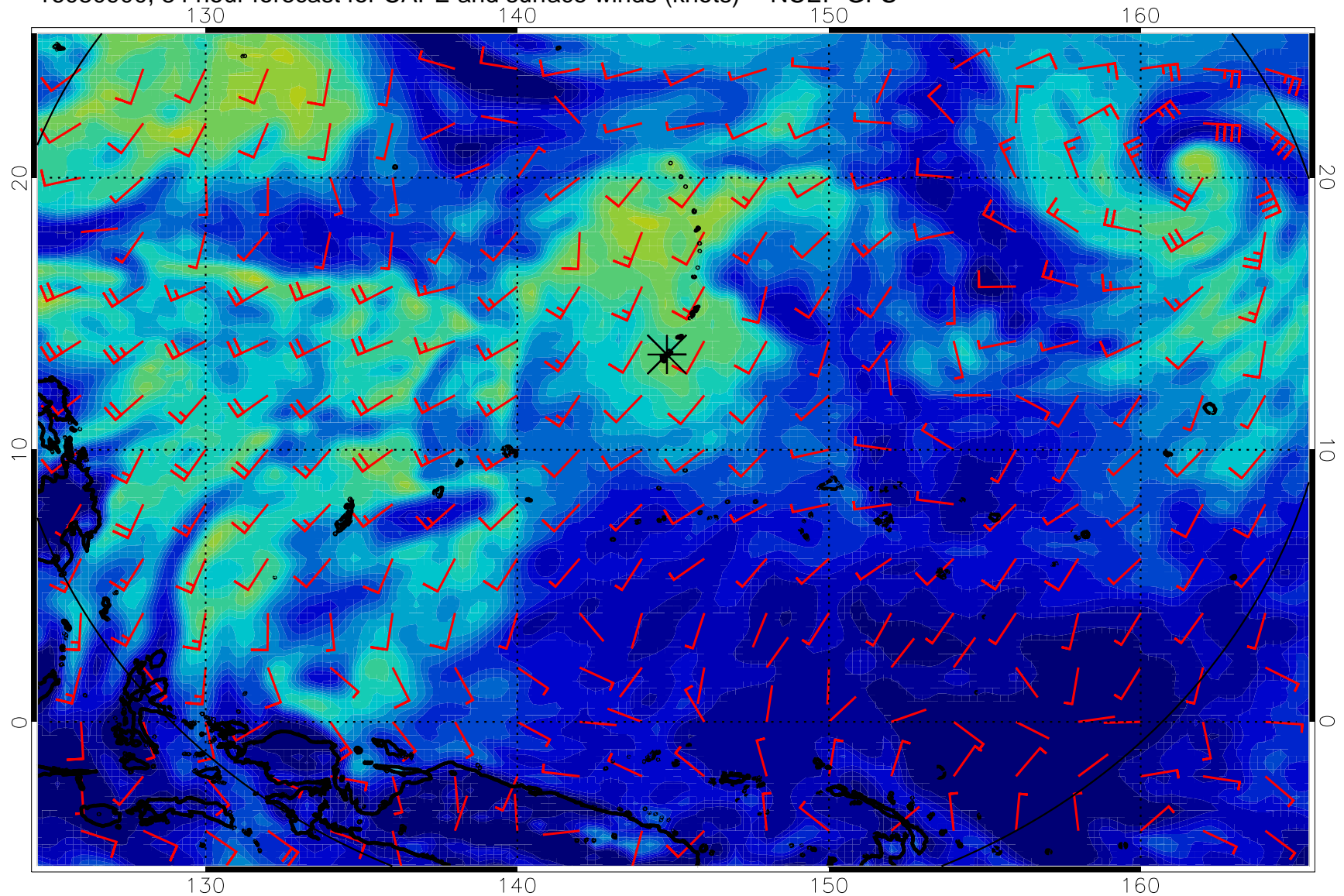
16080812, 72 hour forecast for CAPE and surface winds (knots) -- NCEP GFS



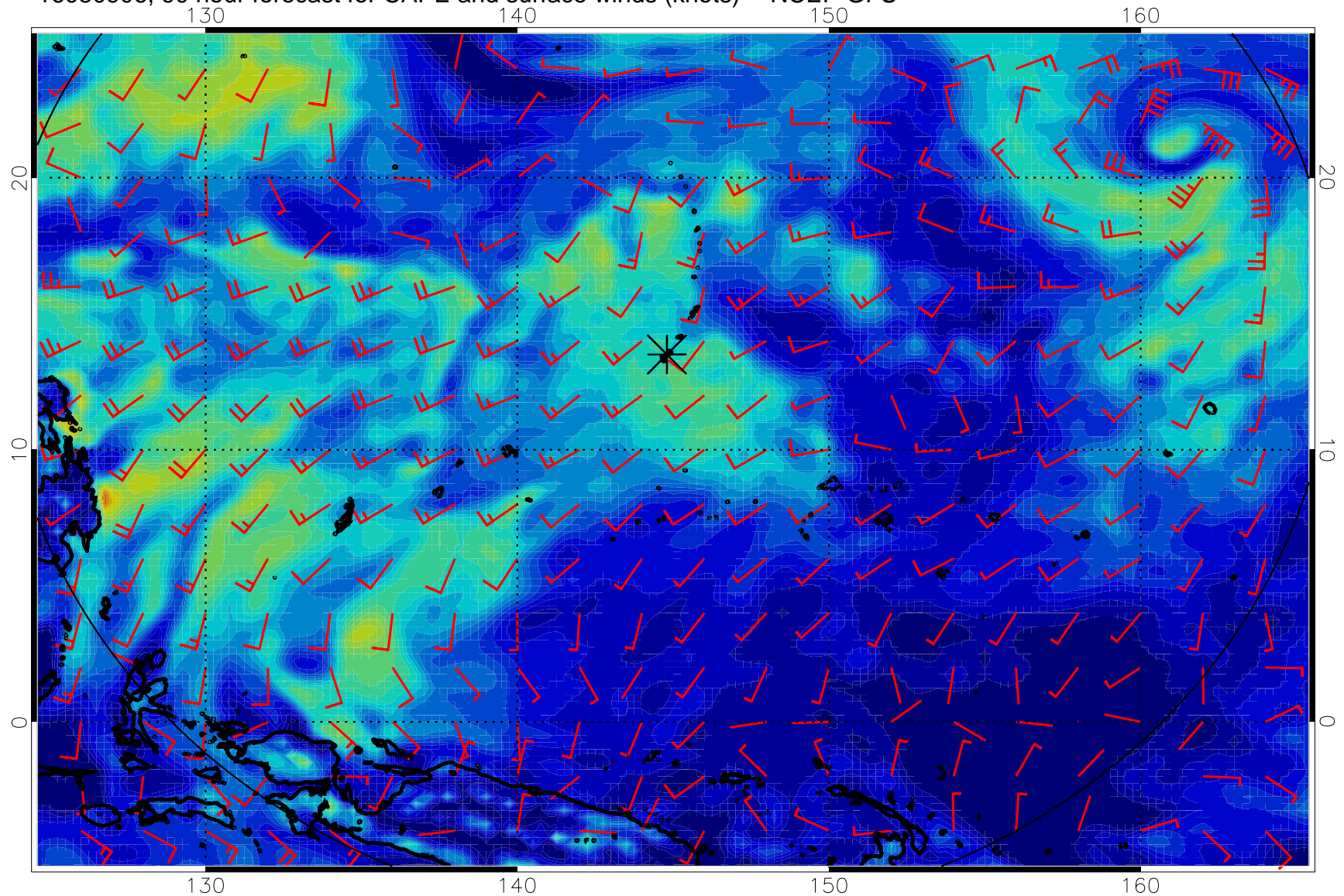
16080818, 78 hour forecast for CAPE and surface winds (knots) -- NCEP GFS



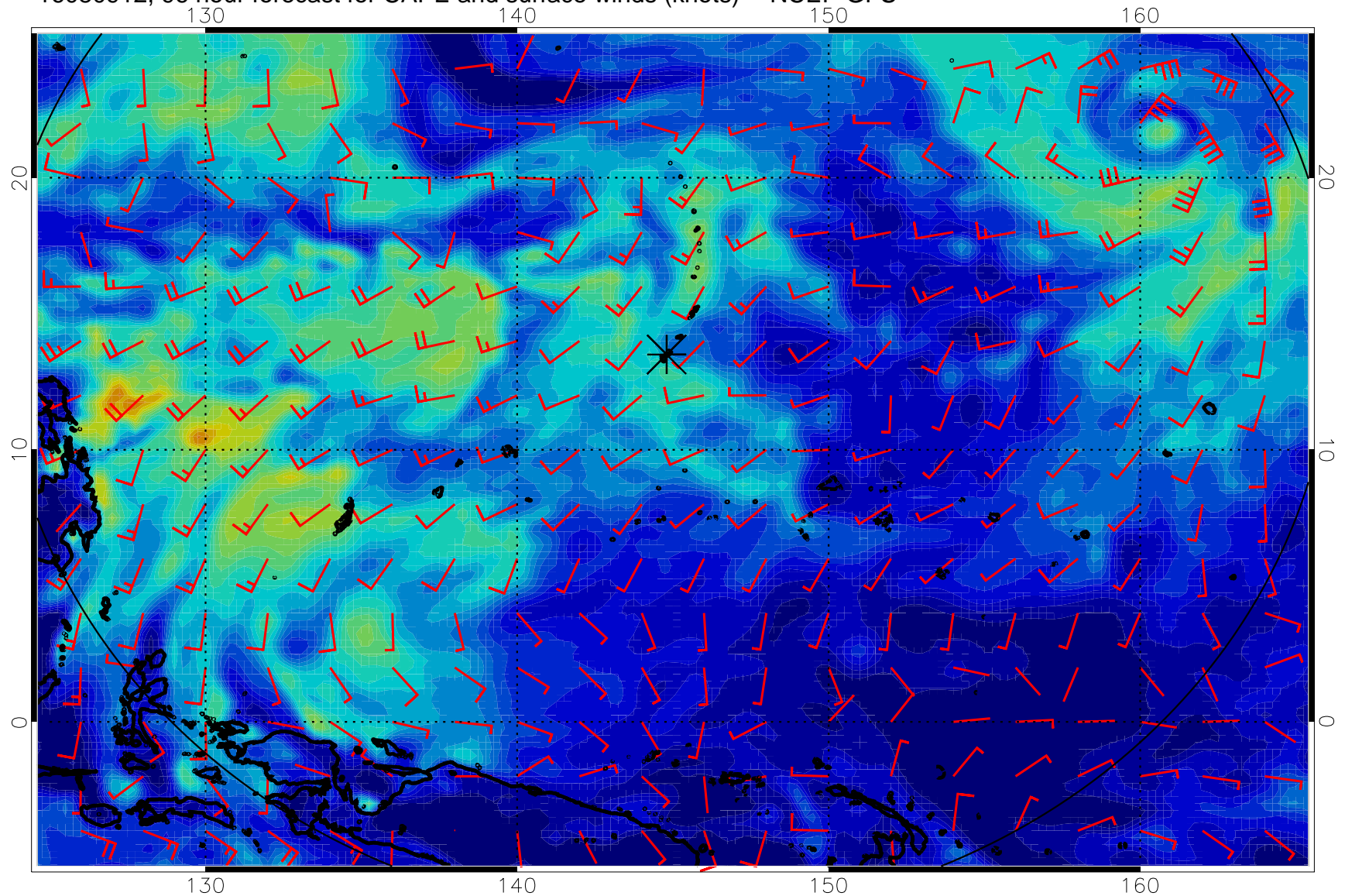
16080900, 84 hour forecast for CAPE and surface winds (knots) -- NCEP GFS



16080906, 90 hour forecast for CAPE and surface winds (knots) -- NCEP GFS

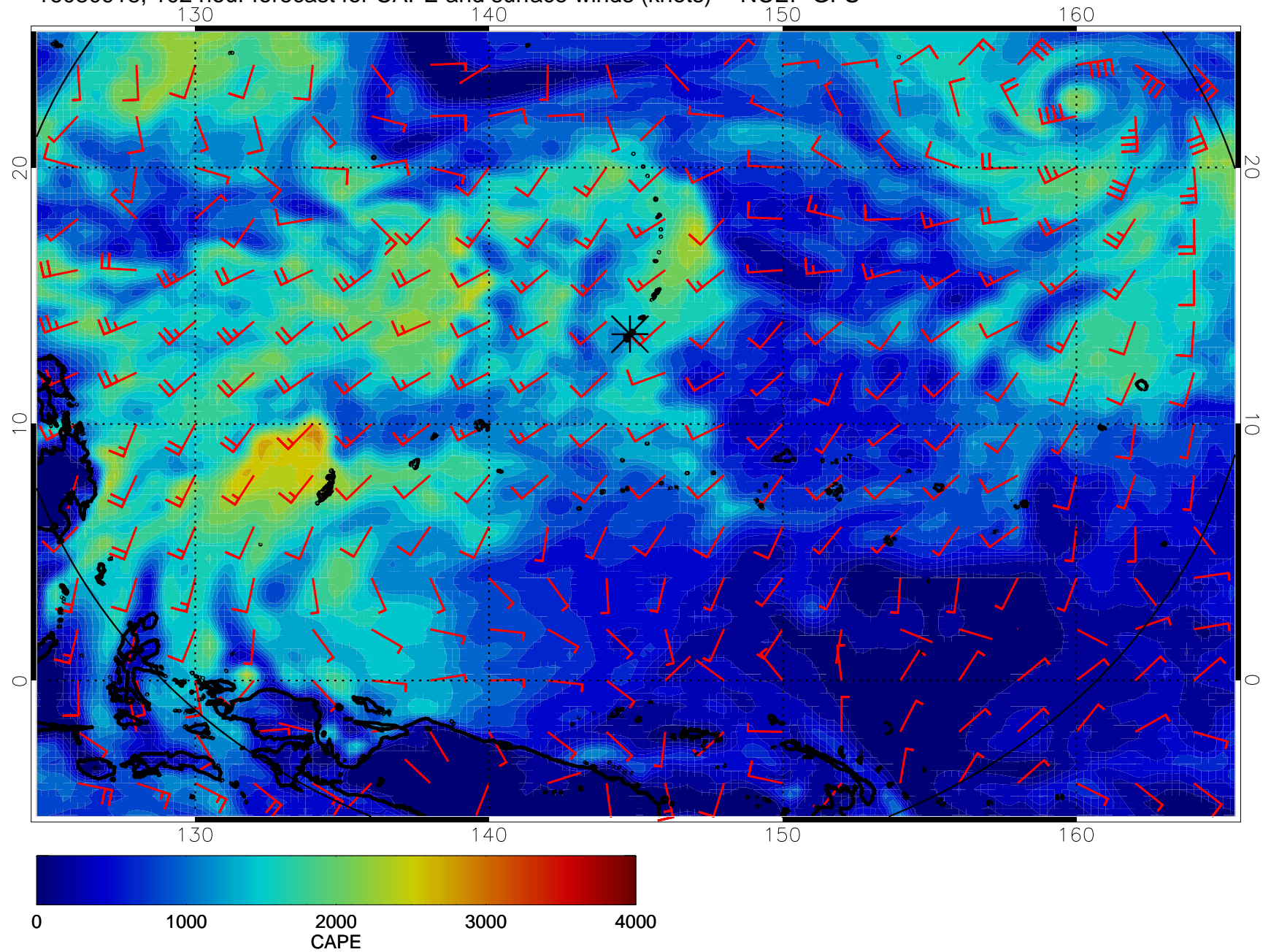


16080912, 96 hour forecast for CAPE and surface winds (knots) -- NCEP GFS

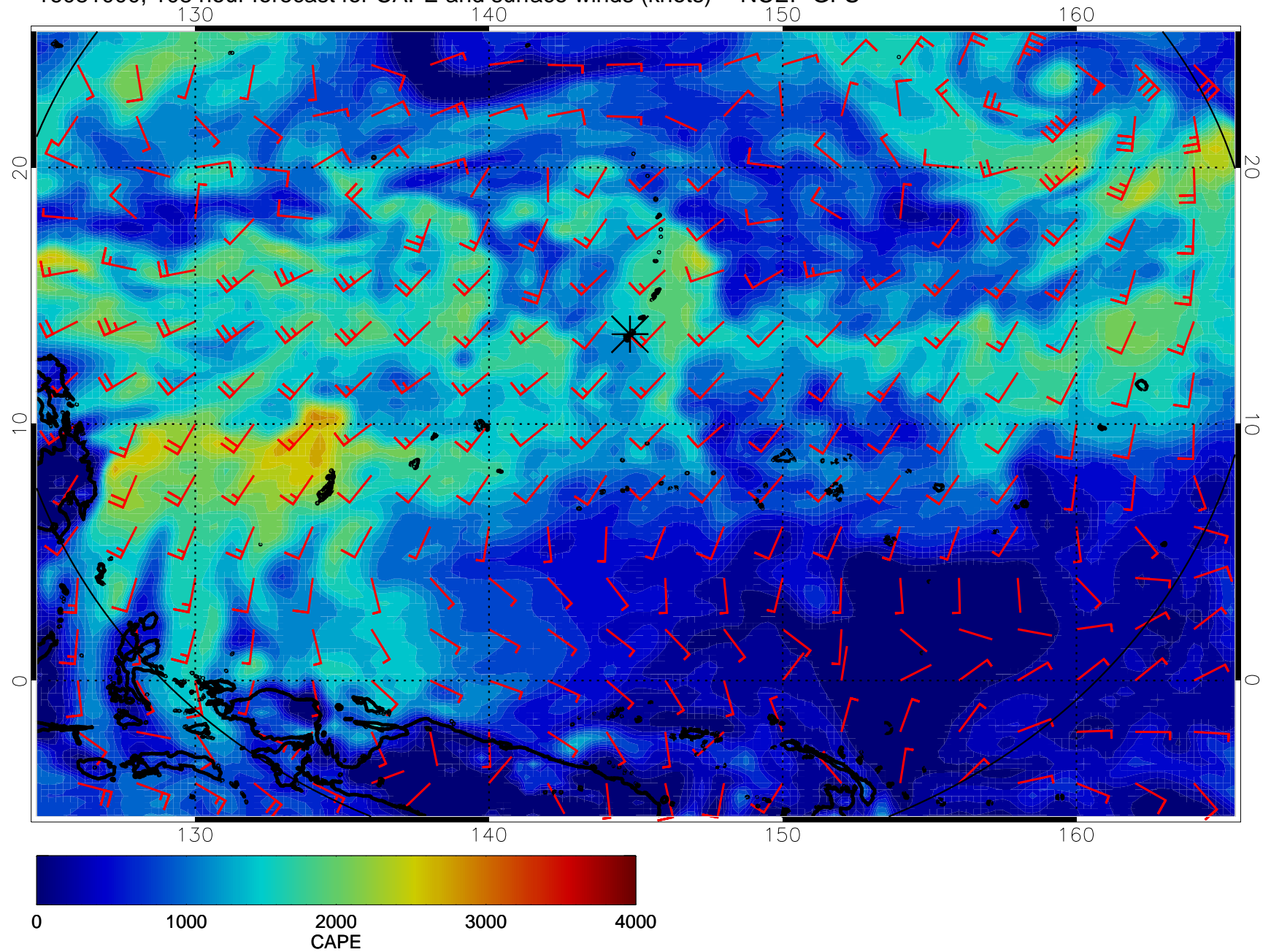




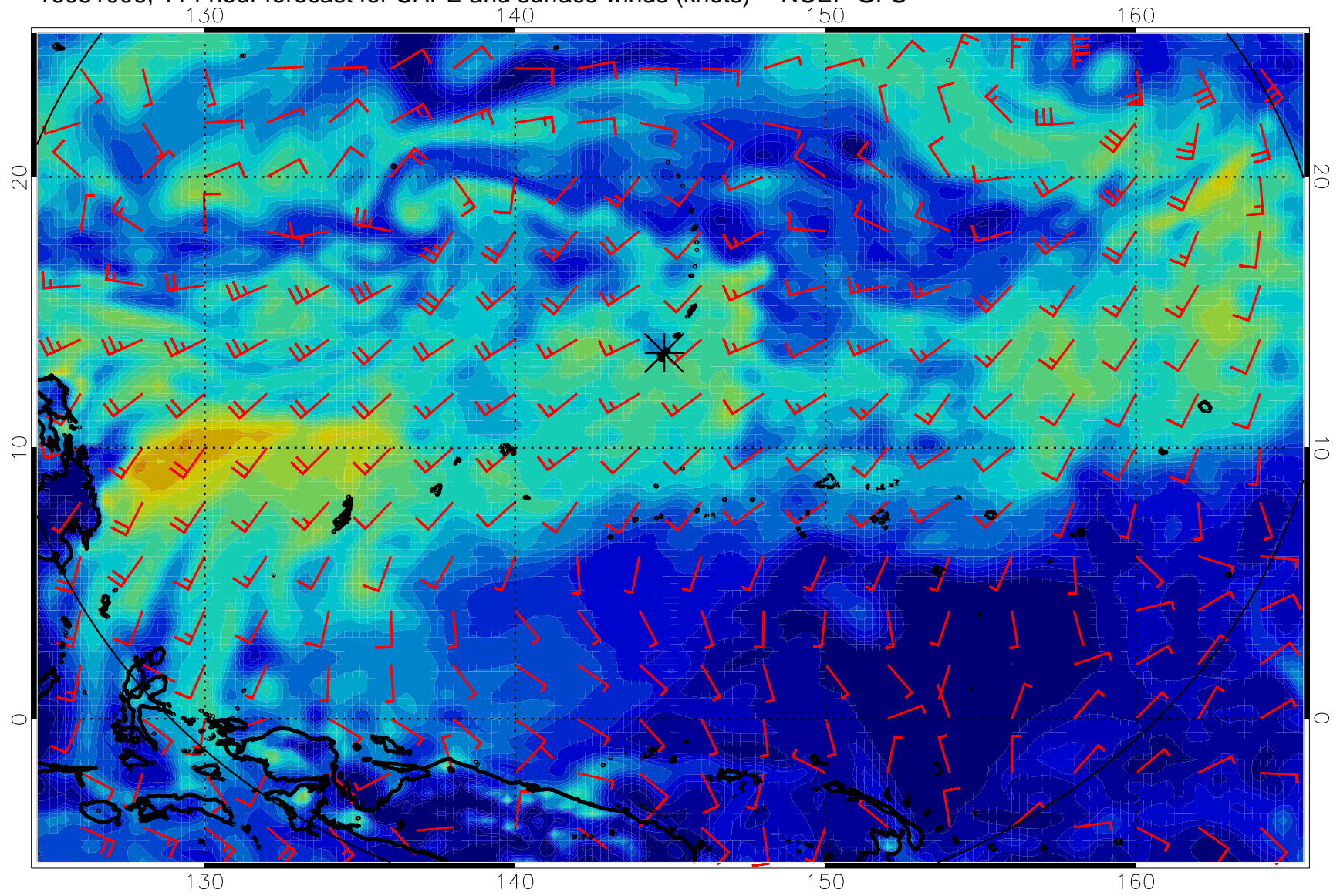
16080918, 102 hour forecast for CAPE and surface winds (knots) -- NCEP GFS



16081000, 108 hour forecast for CAPE and surface winds (knots) -- NCEP GFS



16081006, 114 hour forecast for CAPE and surface winds (knots) -- NCEP GFS



16081012, 120 hour forecast for CAPE and surface winds (knots) -- NCEP GFS

