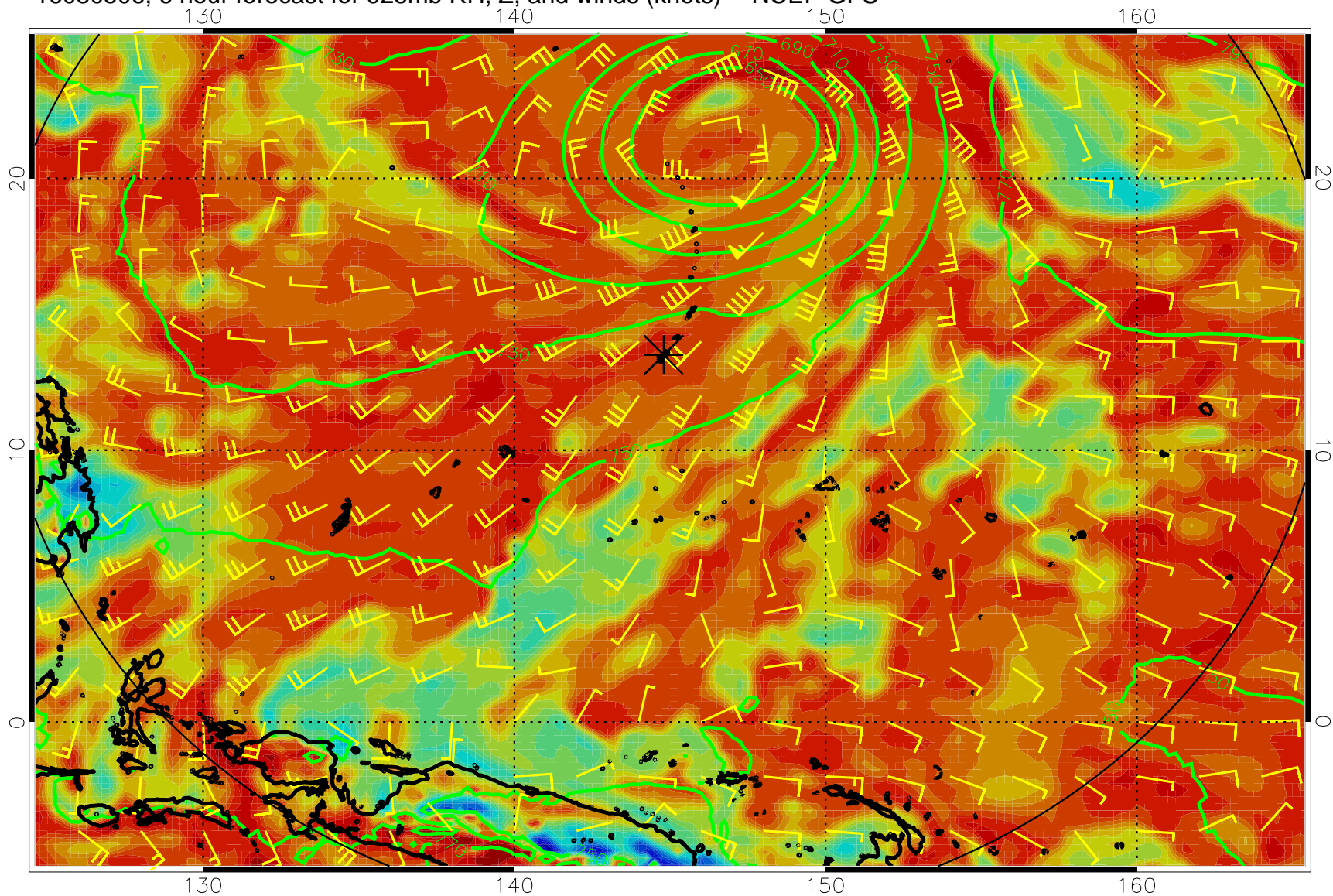
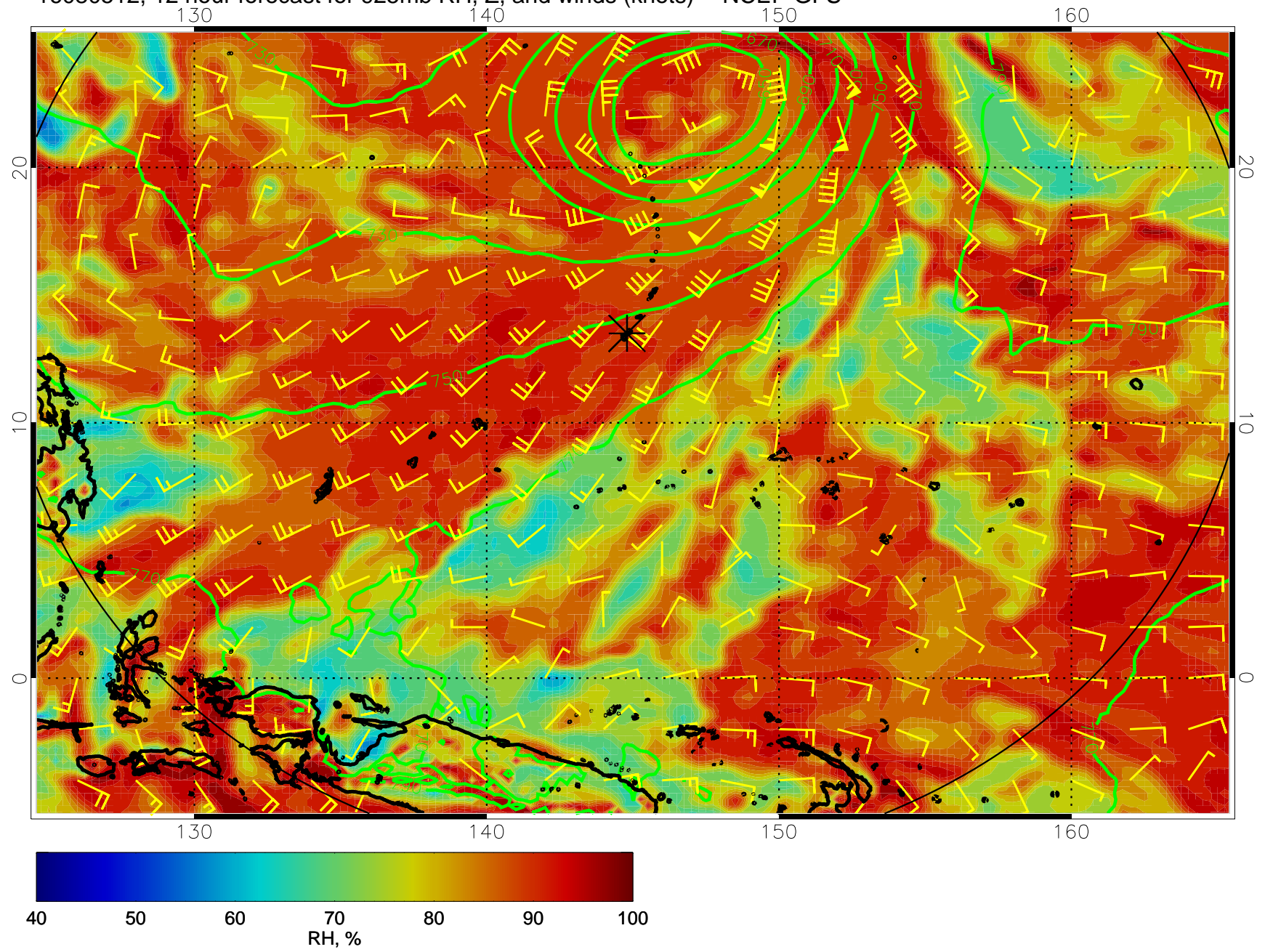


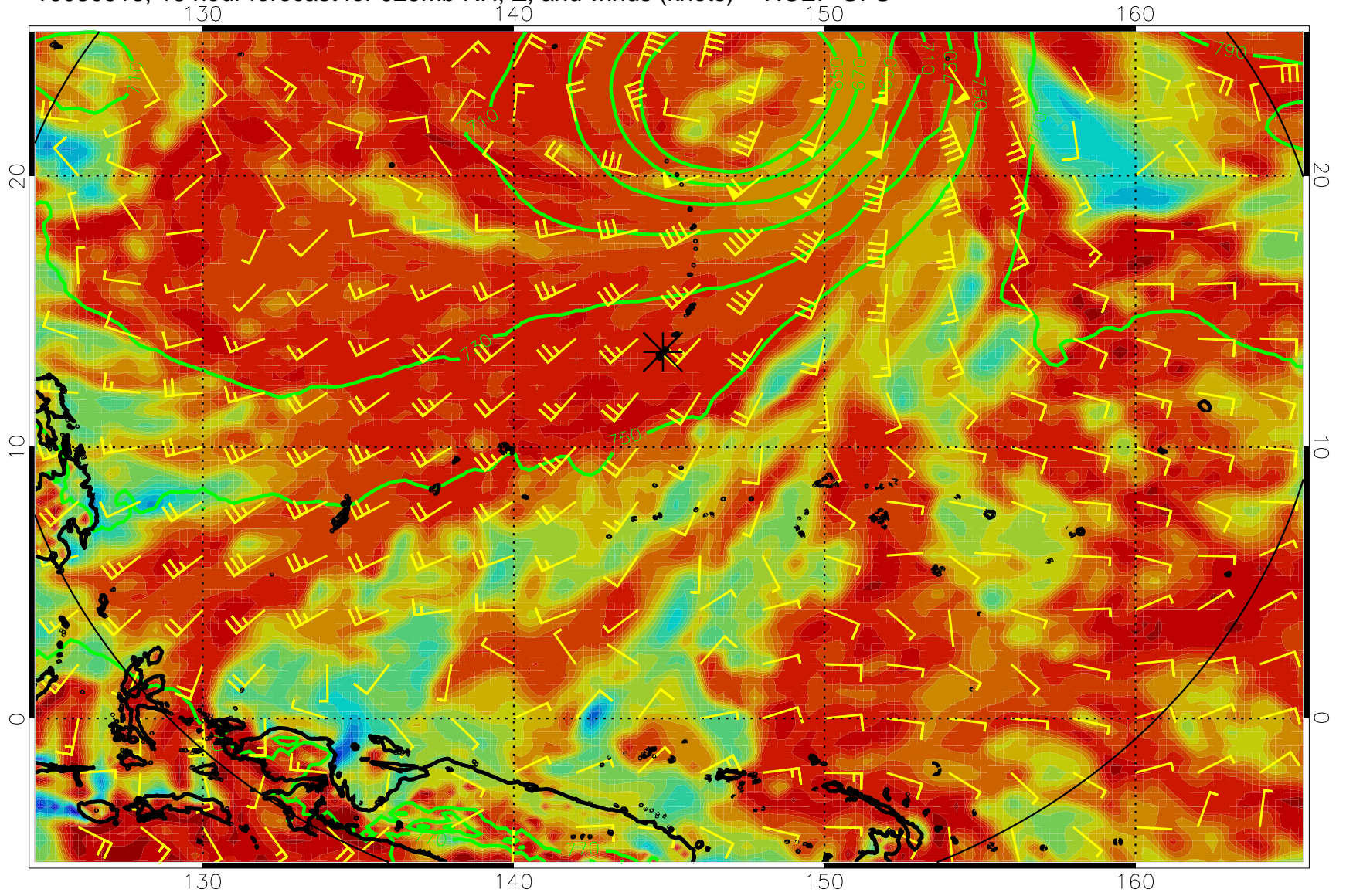
16080506, 6 hour forecast for 925mb RH, Z, and winds (knots) -- NCEP GFS



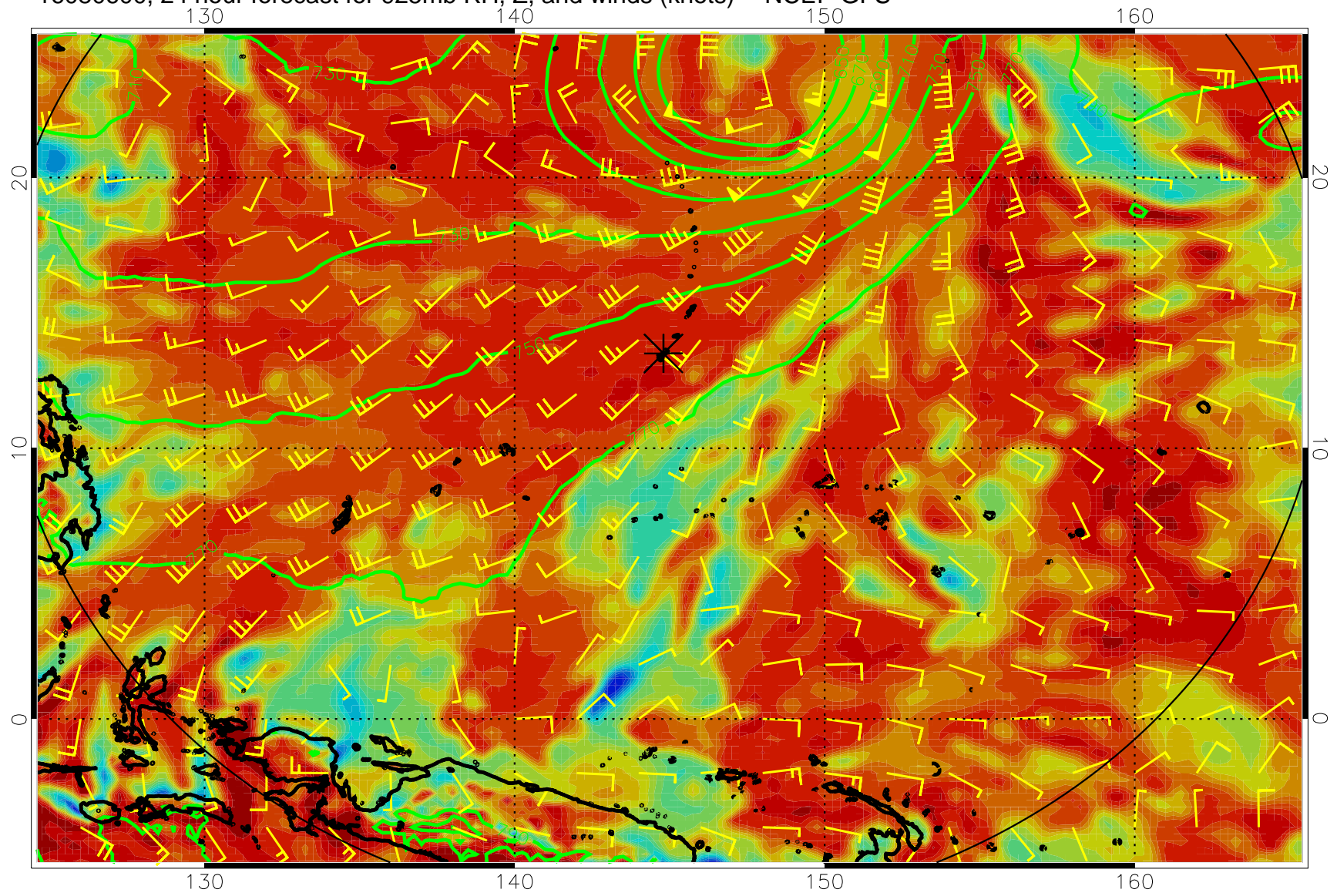
16080512, 12 hour forecast for 925mb RH, Z, and winds (knots) -- NCEP GFS



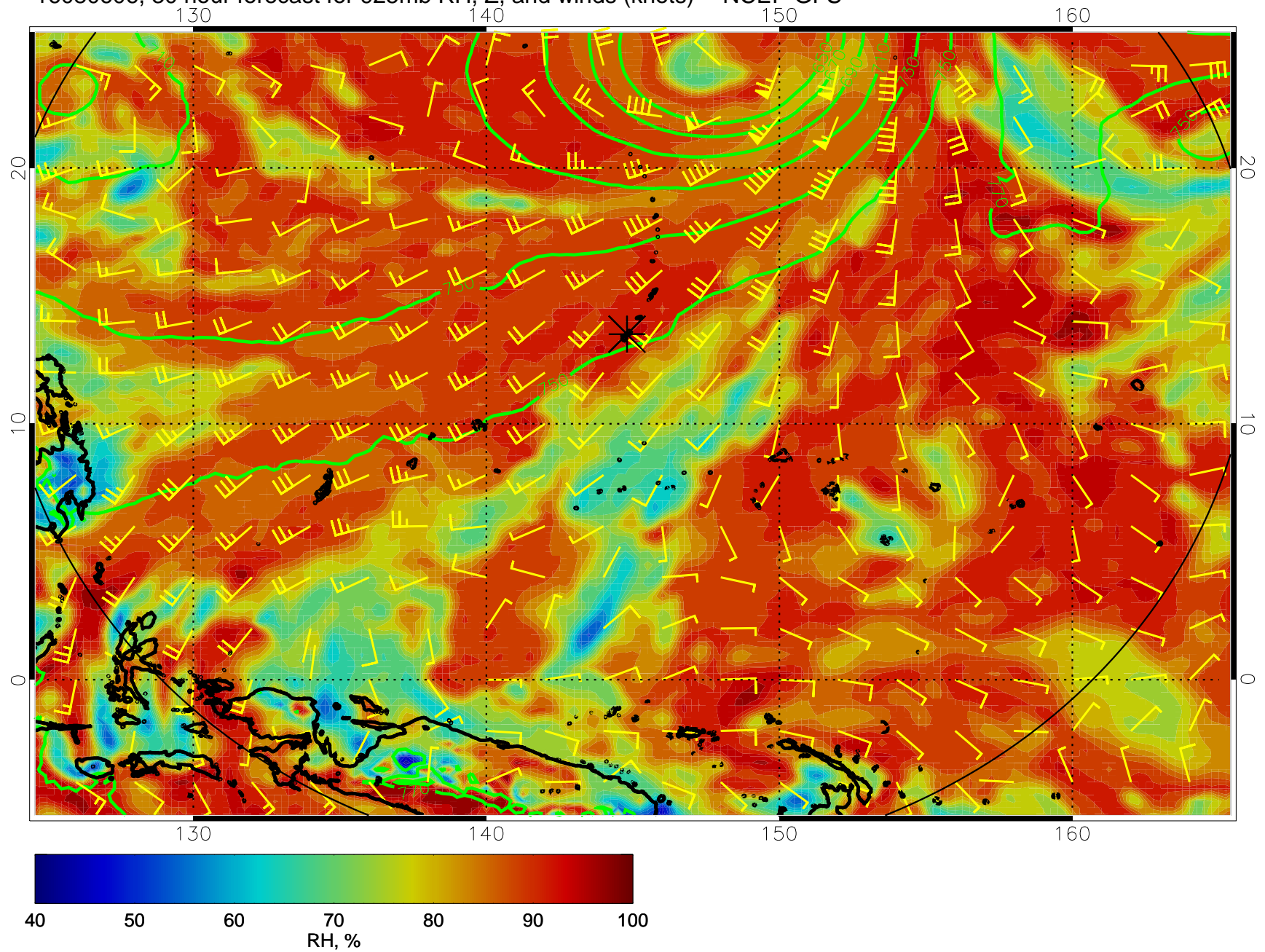
16080518, 18 hour forecast for 925mb RH, Z, and winds (knots) -- NCEP GFS



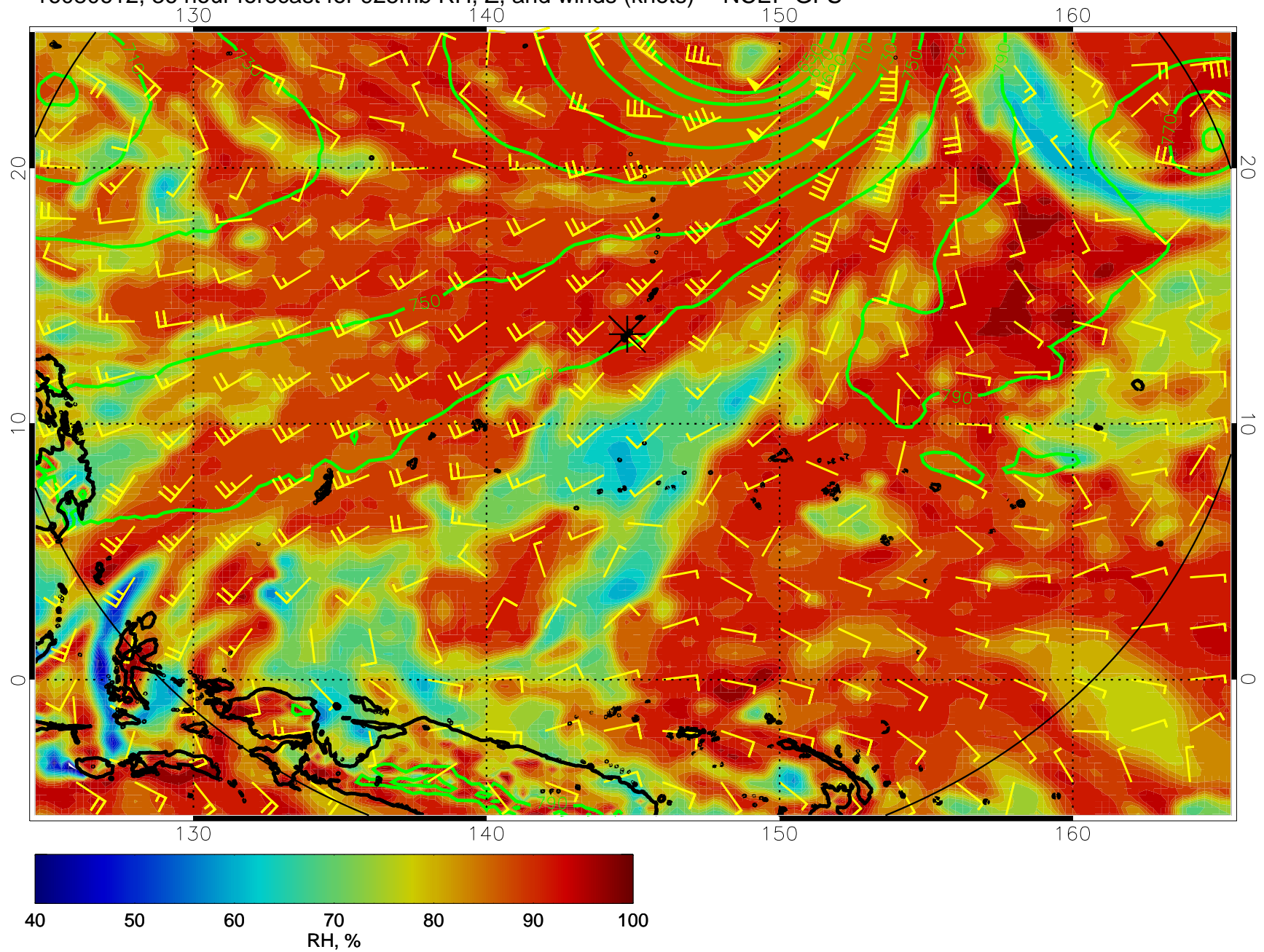
16080600, 24 hour forecast for 925mb RH, Z, and winds (knots) -- NCEP GFS



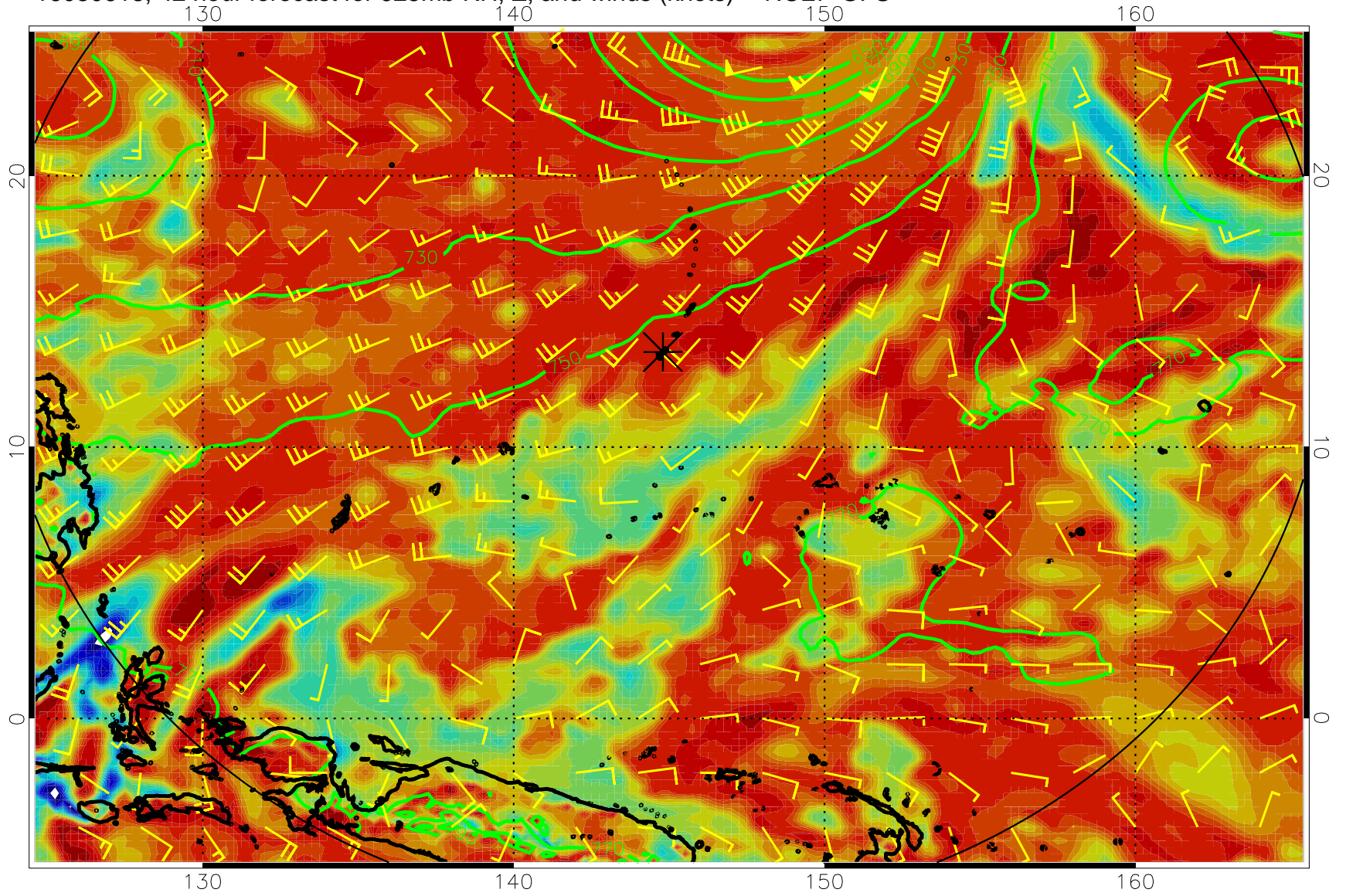
16080606, 30 hour forecast for 925mb RH, Z, and winds (knots) -- NCEP GFS



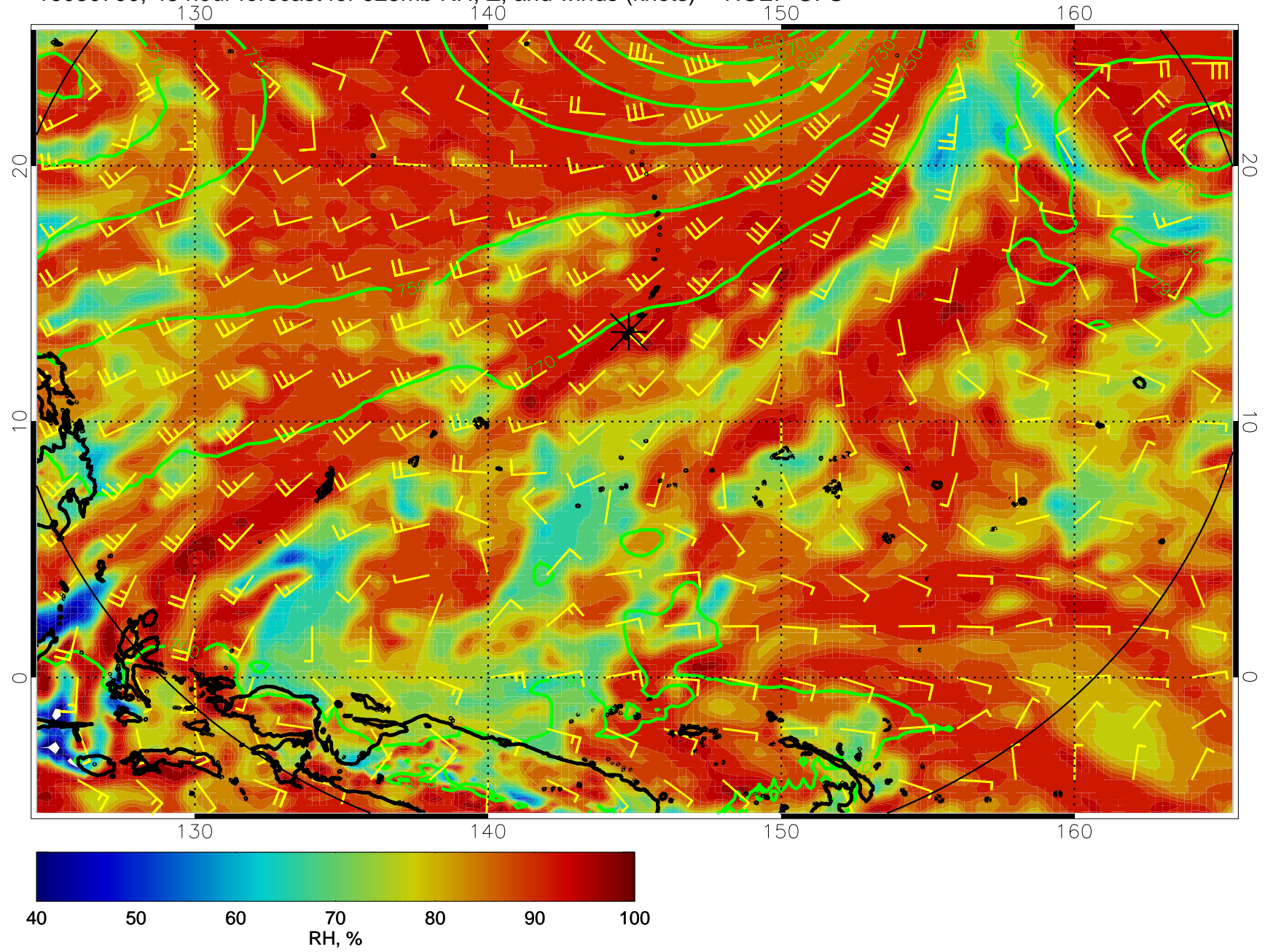
16080612, 36 hour forecast for 925mb RH, Z, and winds (knots) -- NCEP GFS



16080618, 42 hour forecast for 925mb RH, Z, and winds (knots) -- NCEP GFS

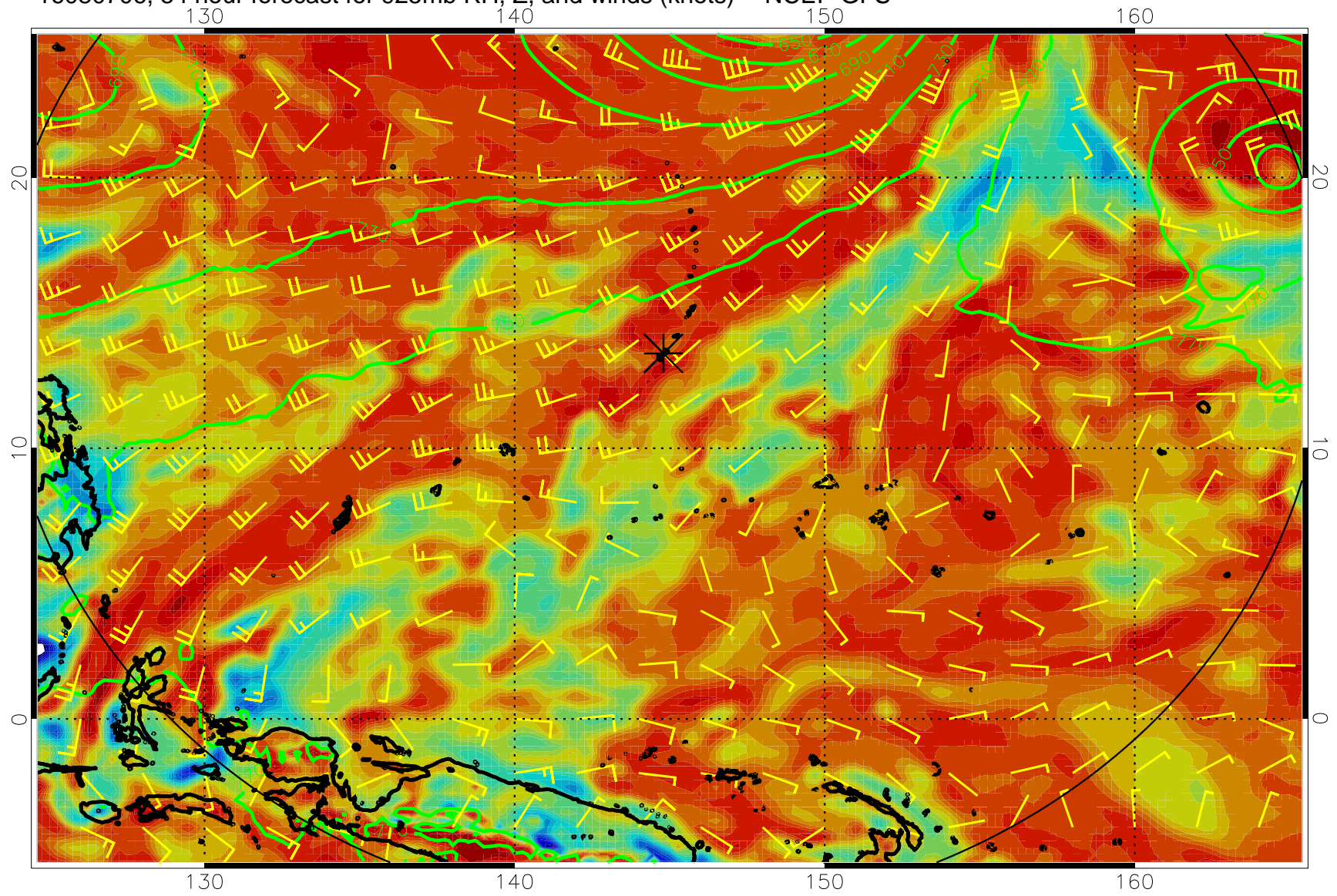


16080700, 48 hour forecast for 925mb RH, Z, and winds (knots) -- NCEP GFS

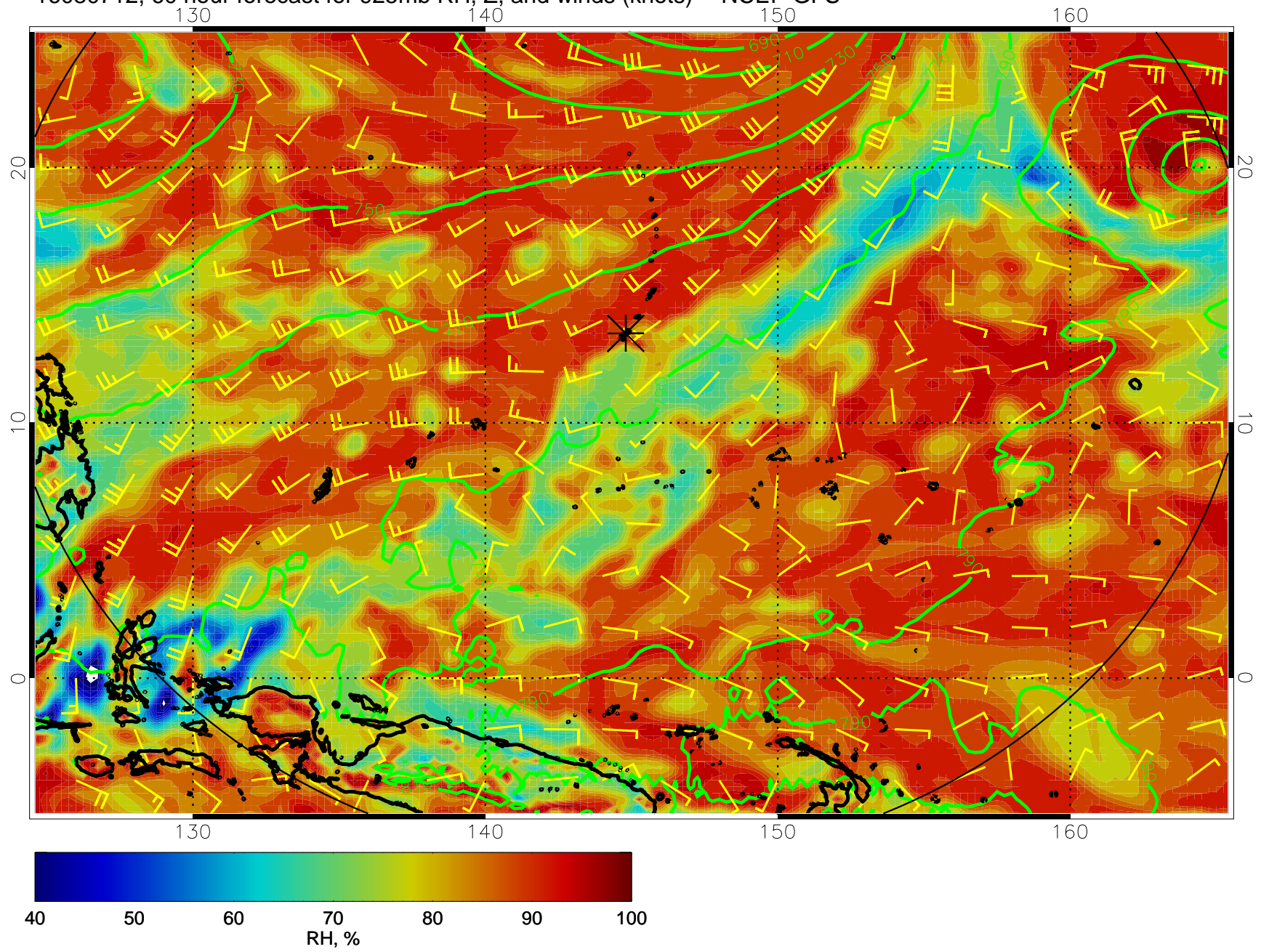




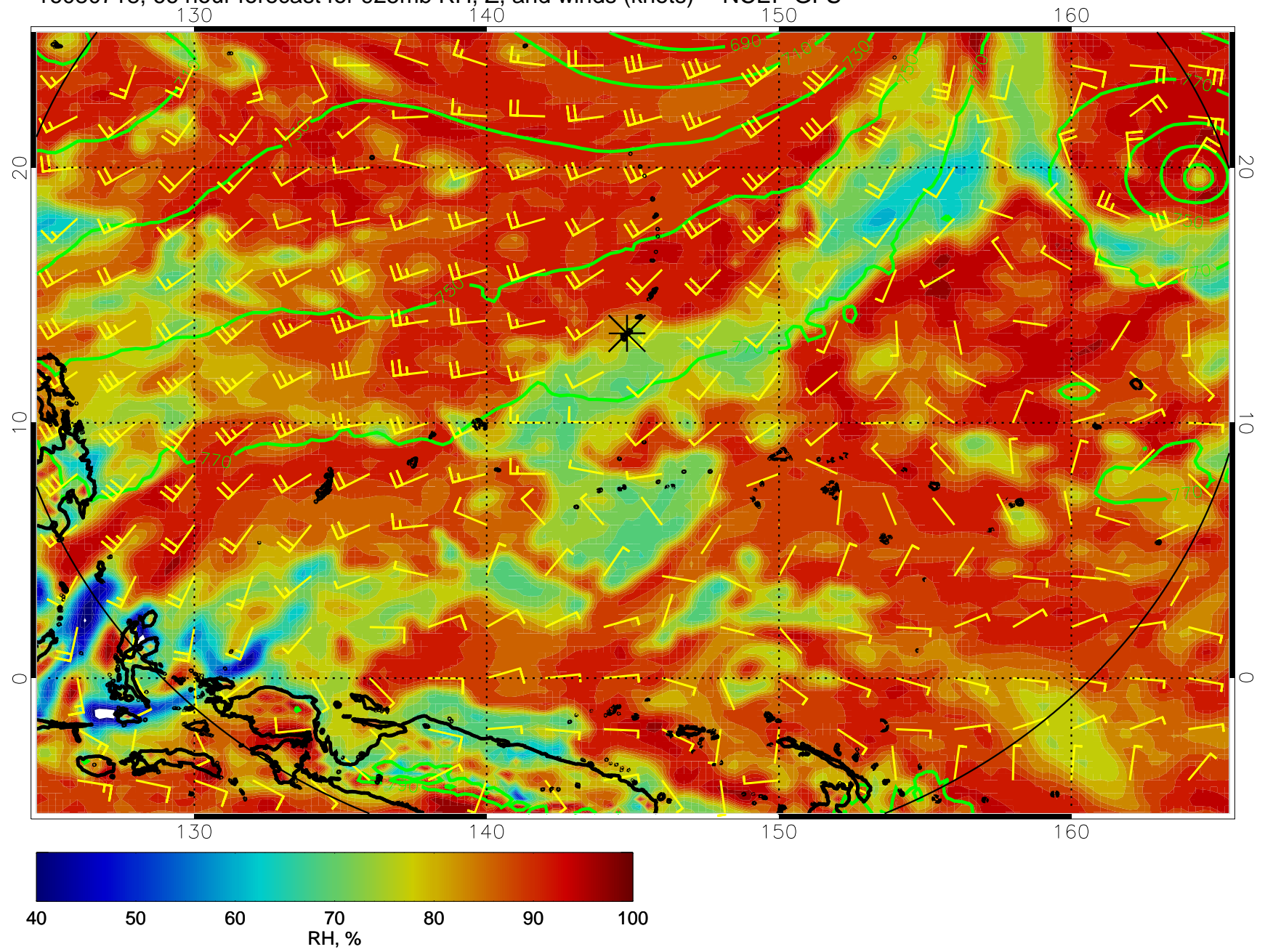
16080706, 54 hour forecast for 925mb RH, Z, and winds (knots) -- NCEP GFS



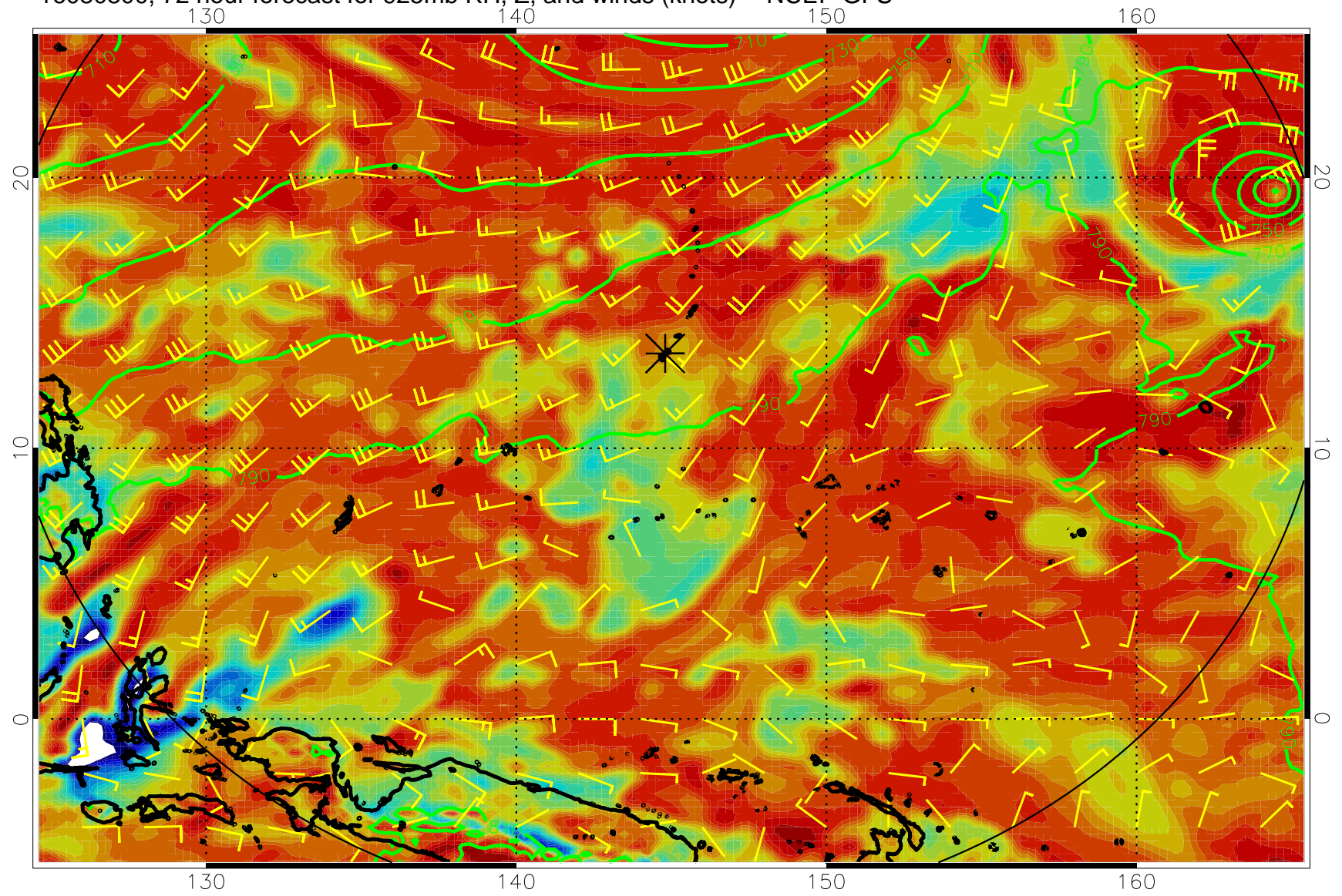
16080712, 60 hour forecast for 925mb RH, Z, and winds (knots) -- NCEP GFS



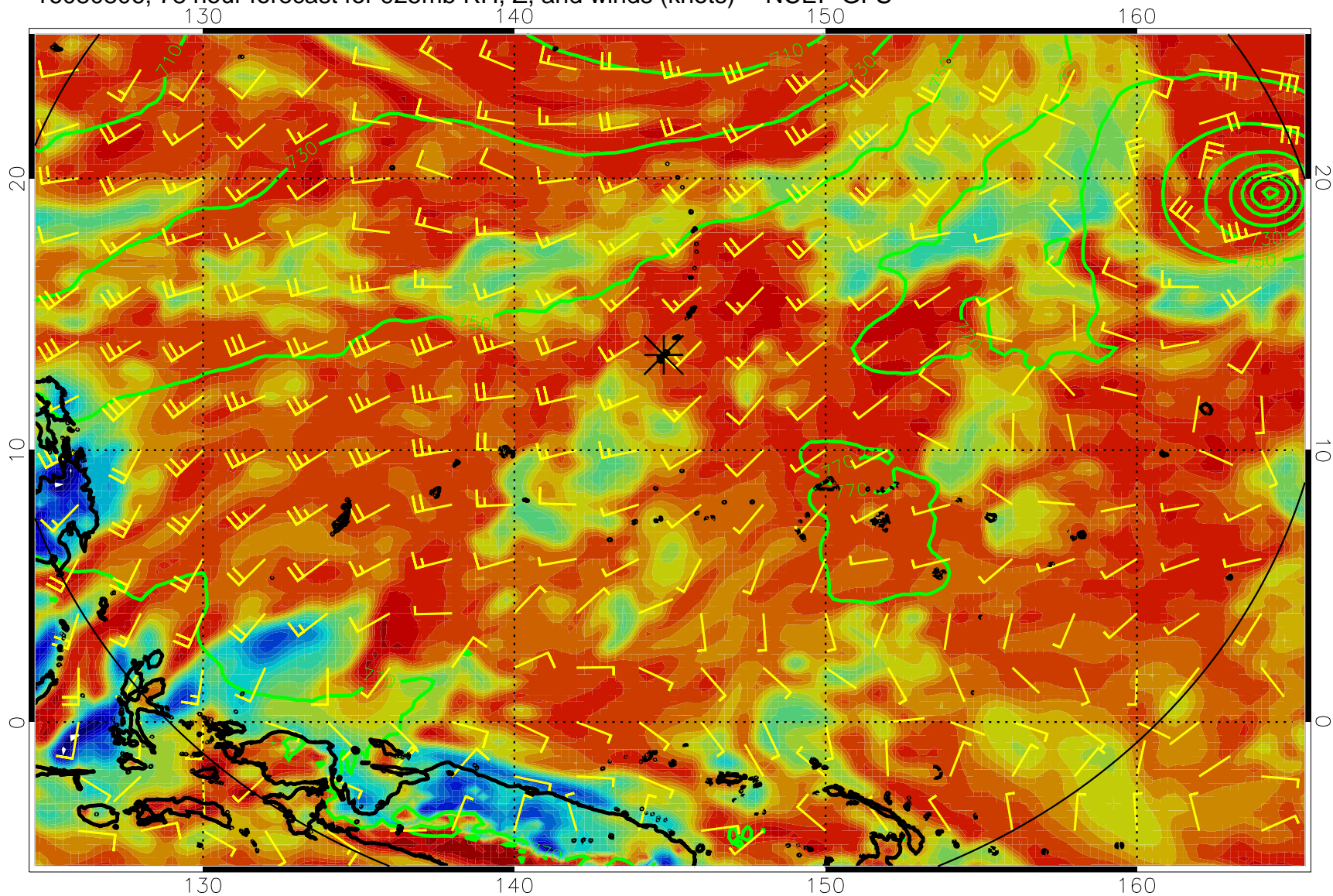
16080718, 66 hour forecast for 925mb RH, Z, and winds (knots) -- NCEP GFS



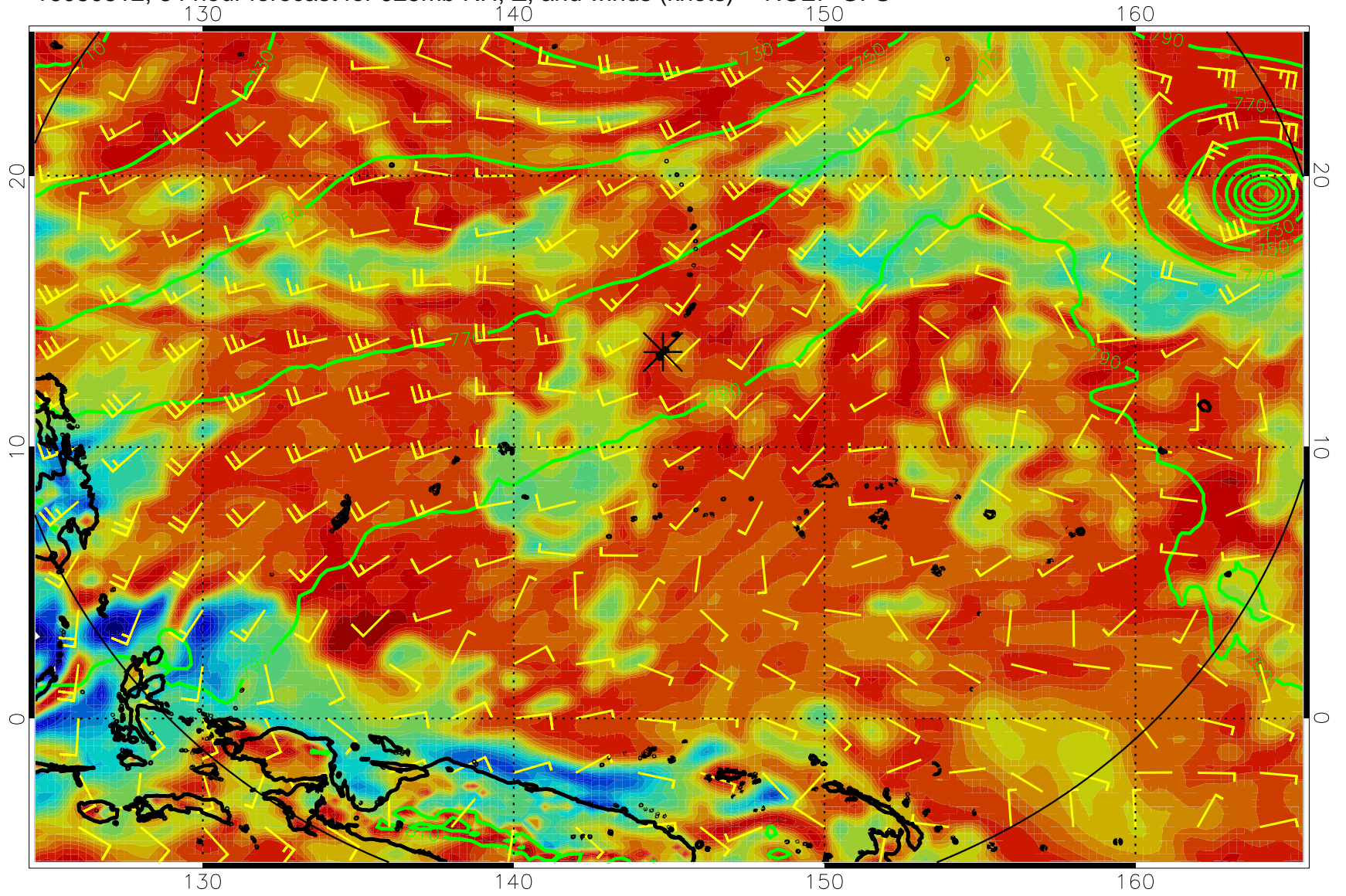
16080800, 72 hour forecast for 925mb RH, Z, and winds (knots) -- NCEP GFS



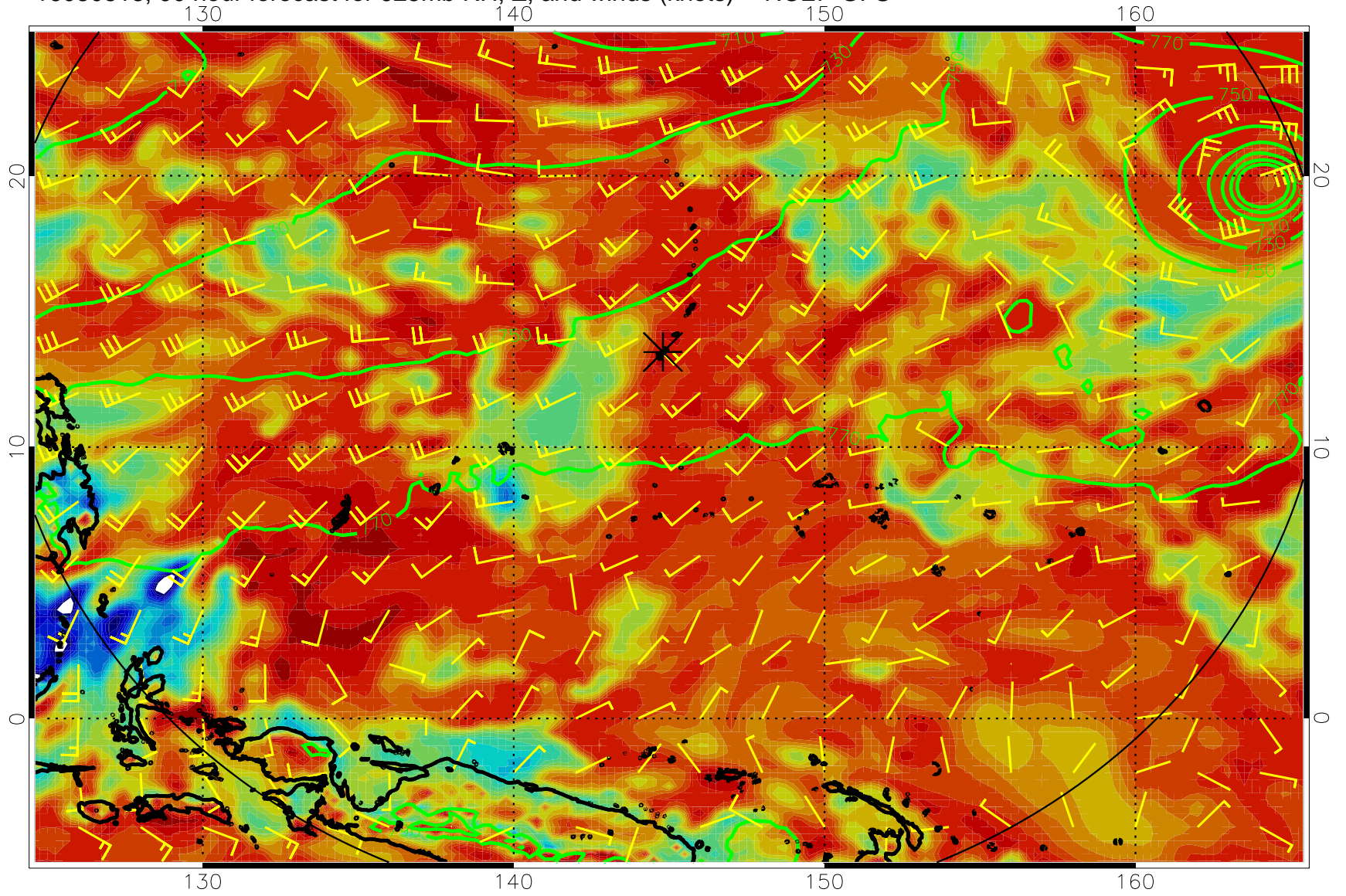
16080806, 78 hour forecast for 925mb RH, Z, and winds (knots) -- NCEP GFS



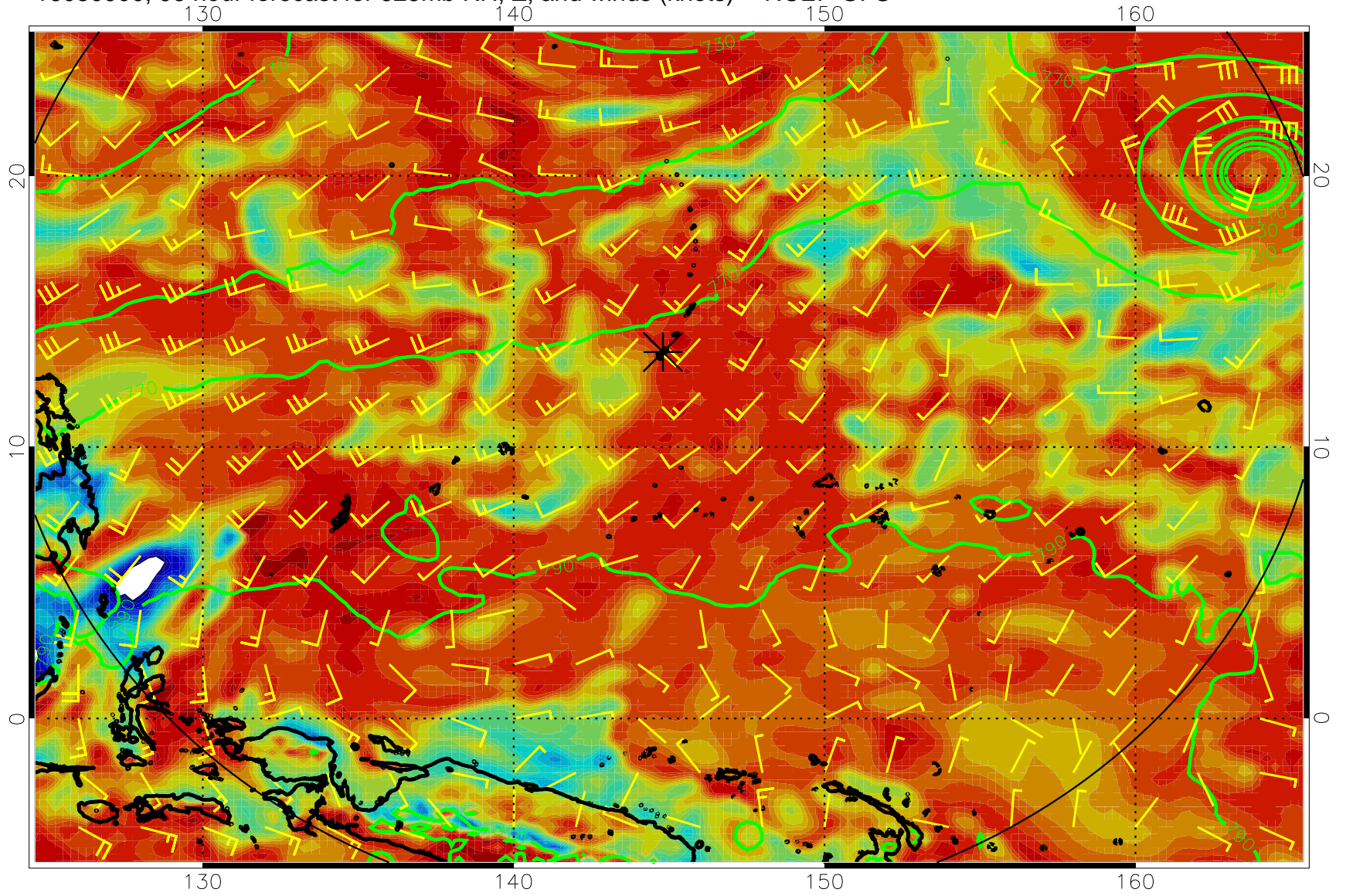
16080812, 84 hour forecast for 925mb RH, Z, and winds (knots) -- NCEP GFS



16080818, 90 hour forecast for 925mb RH, Z, and winds (knots) -- NCEP GFS

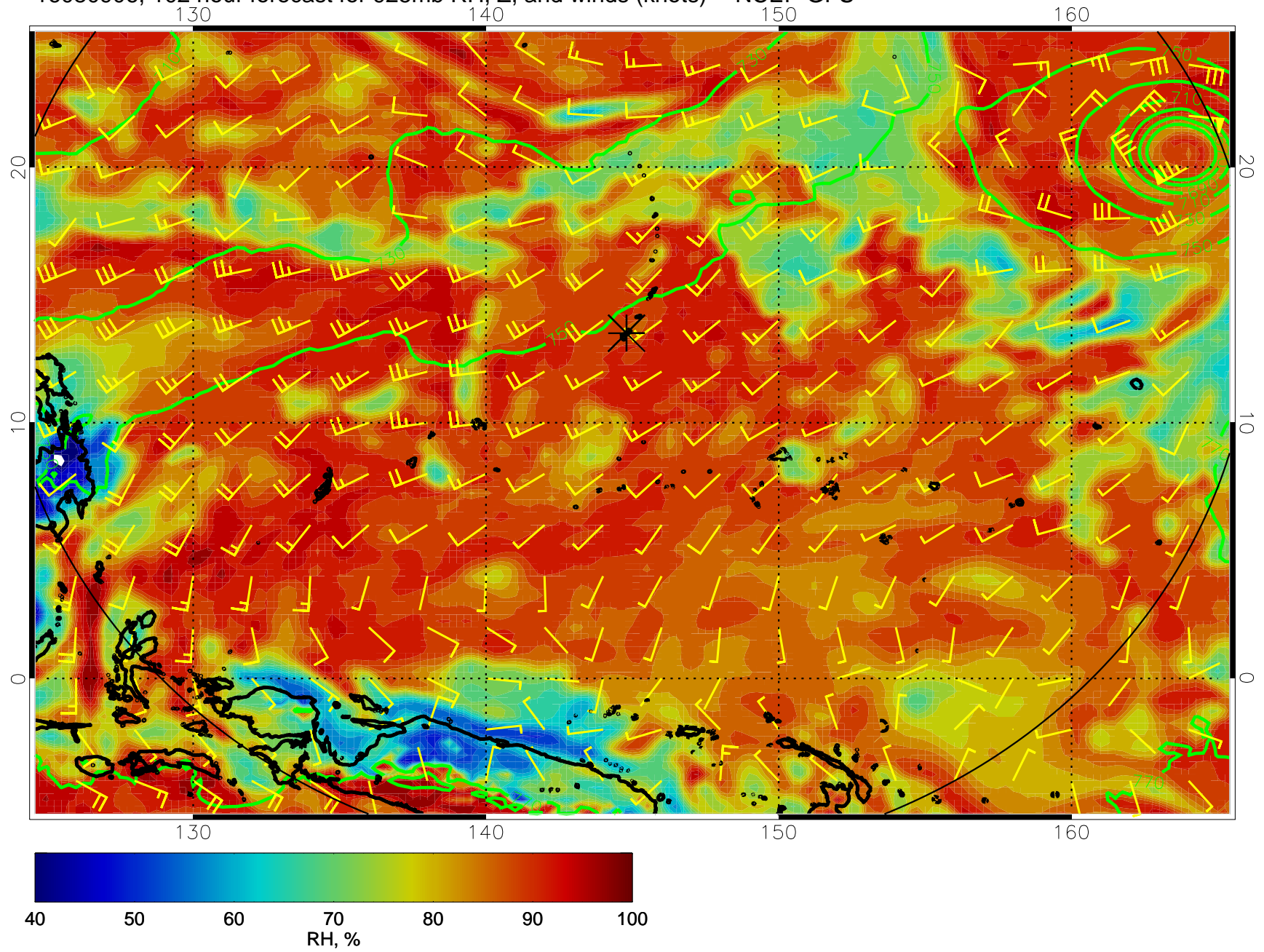


16080900, 96 hour forecast for 925mb RH, Z, and winds (knots) -- NCEP GFS

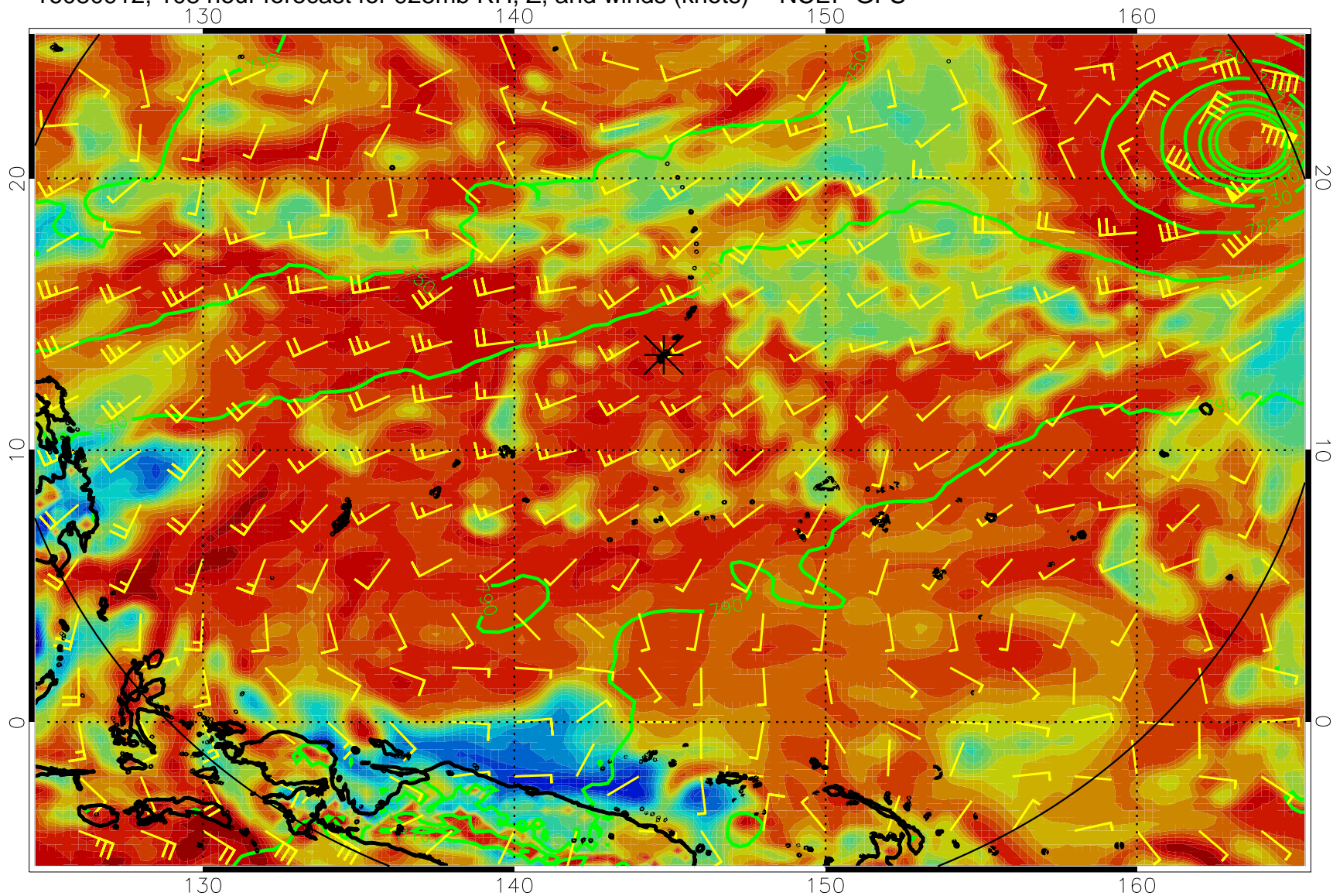




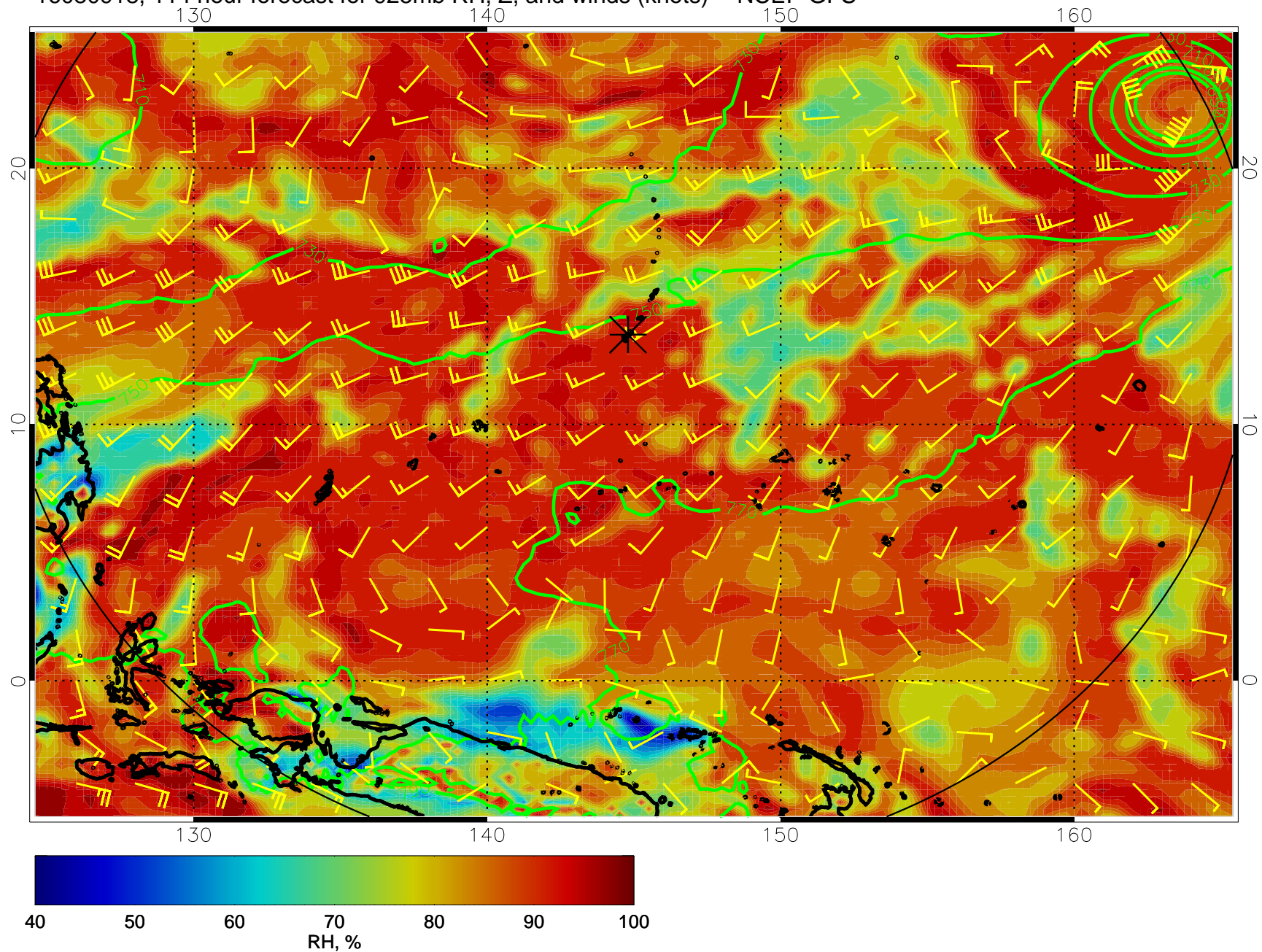
16080906, 102 hour forecast for 925mb RH, Z, and winds (knots) -- NCEP GFS



16080912, 108 hour forecast for 925mb RH, Z, and winds (knots) -- NCEP GFS



16080918, 114 hour forecast for 925mb RH, Z, and winds (knots) -- NCEP GFS



16081000, 120 hour forecast for 925mb RH, Z, and winds (knots) -- NCEP GFS

