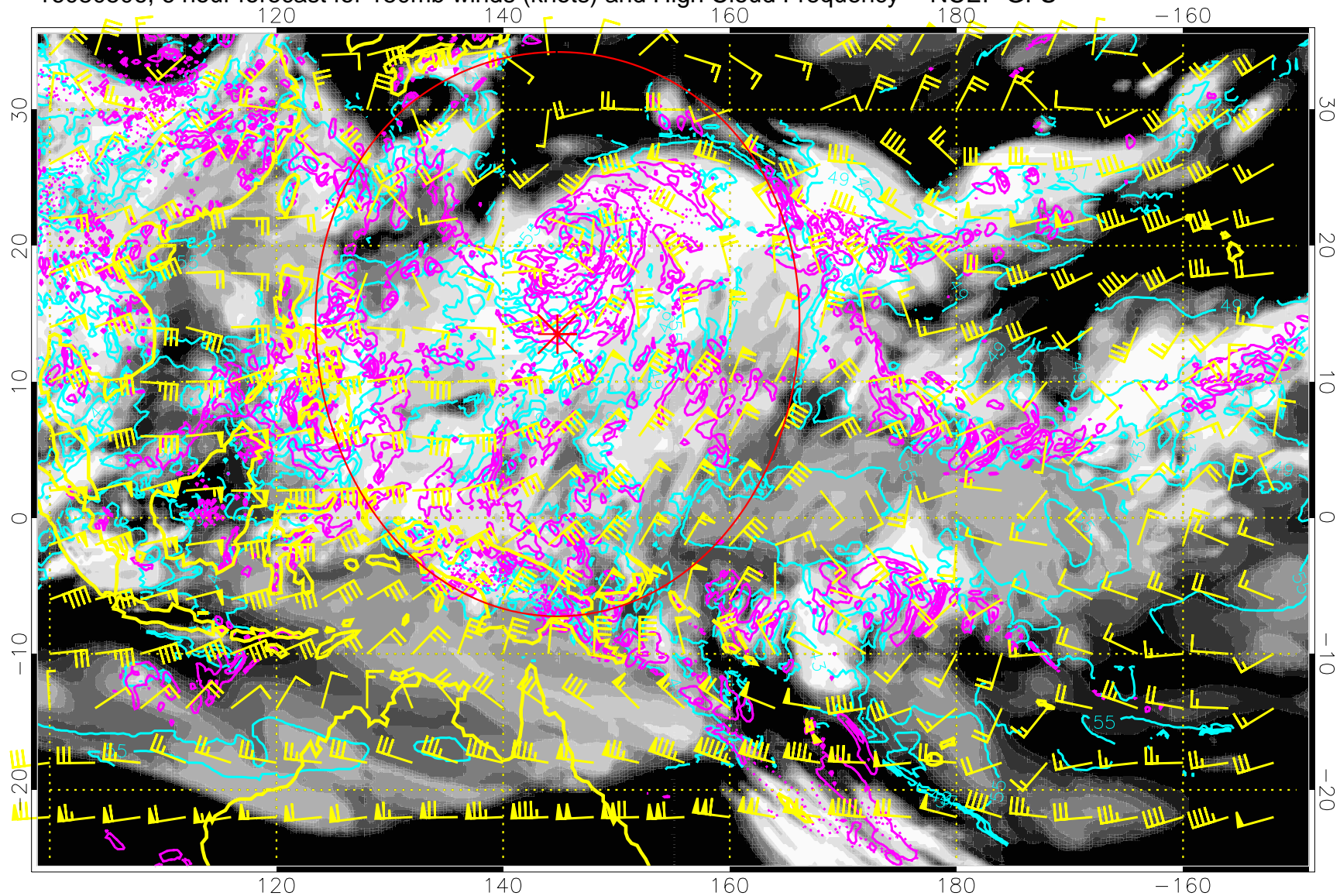


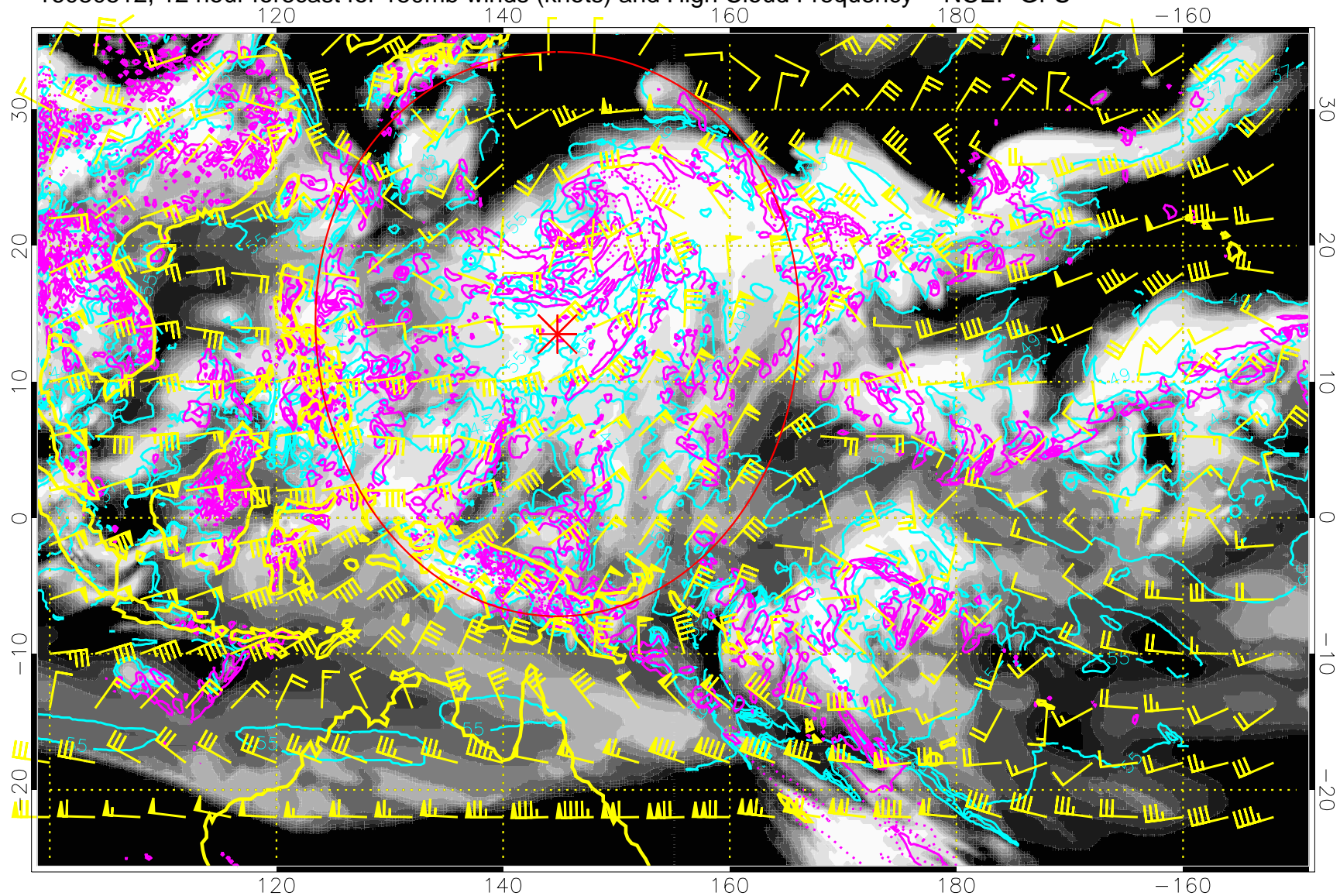
16080506, 6 hour forecast for 150mb winds (knots) and High Cloud Frequency -- NCEP GFS



High Cloud Altitude from 37 kft at 6 kft intervals  
Precip (tot dot, conv sol) mm/day 40 mm/day contours, min 20

Range ring of 2304 km

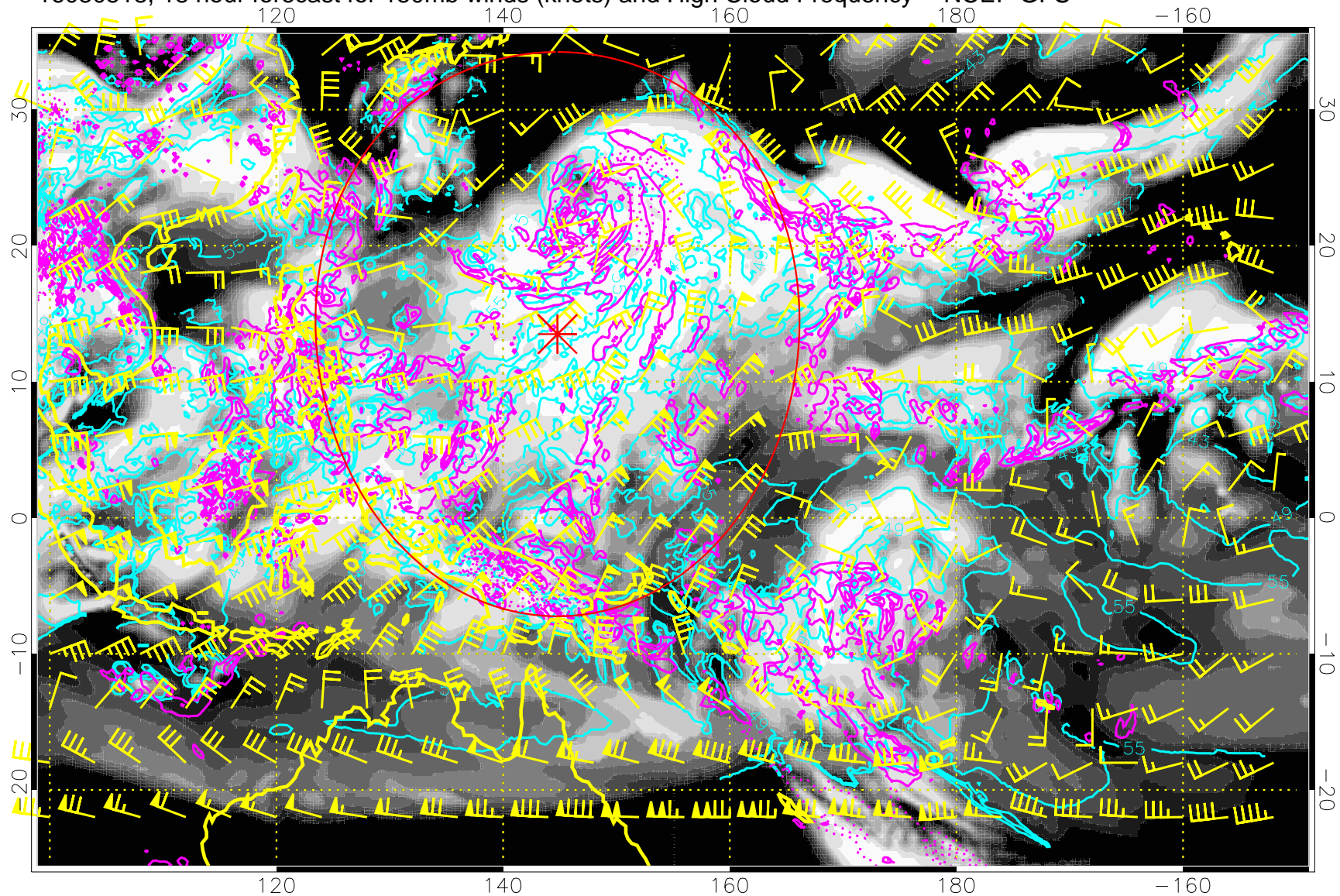
16080512, 12 hour forecast for 150mb winds (knots) and High Cloud Frequency -- NCEP GFS



High Cloud Altitude from 37 kft at 6 kft intervals  
Precip (tot dot, conv sol) mm/day 40 mm/day contours, min 20

Range ring of 2304 km

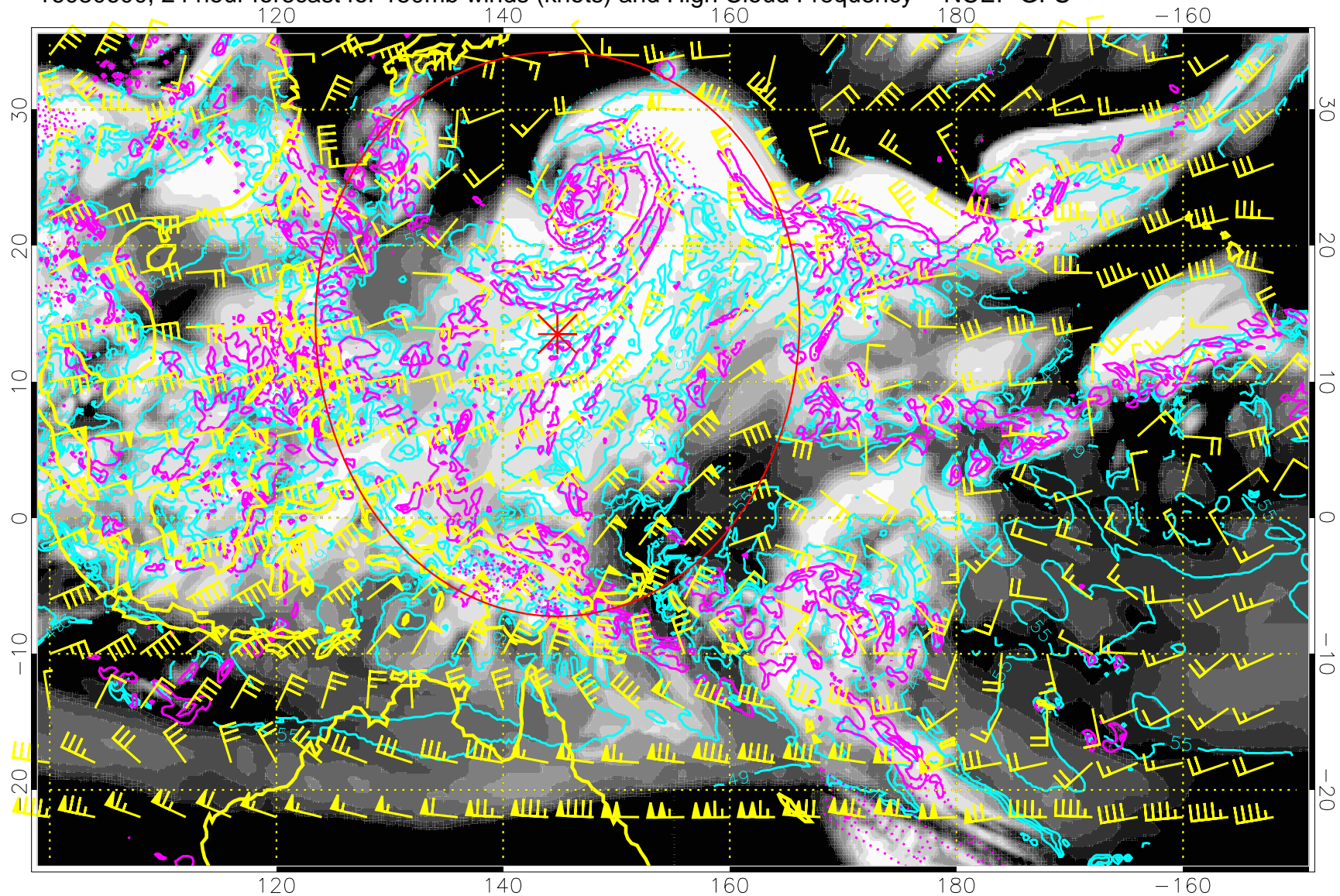
16080518, 18 hour forecast for 150mb winds (knots) and High Cloud Frequency -- NCEP GFS



High Cloud Altitude from 37 kft at 6 kft intervals  
Precip (tot dot, conv sol) mm/day 40 mm/day contours, min 20

Range ring of 2304 km

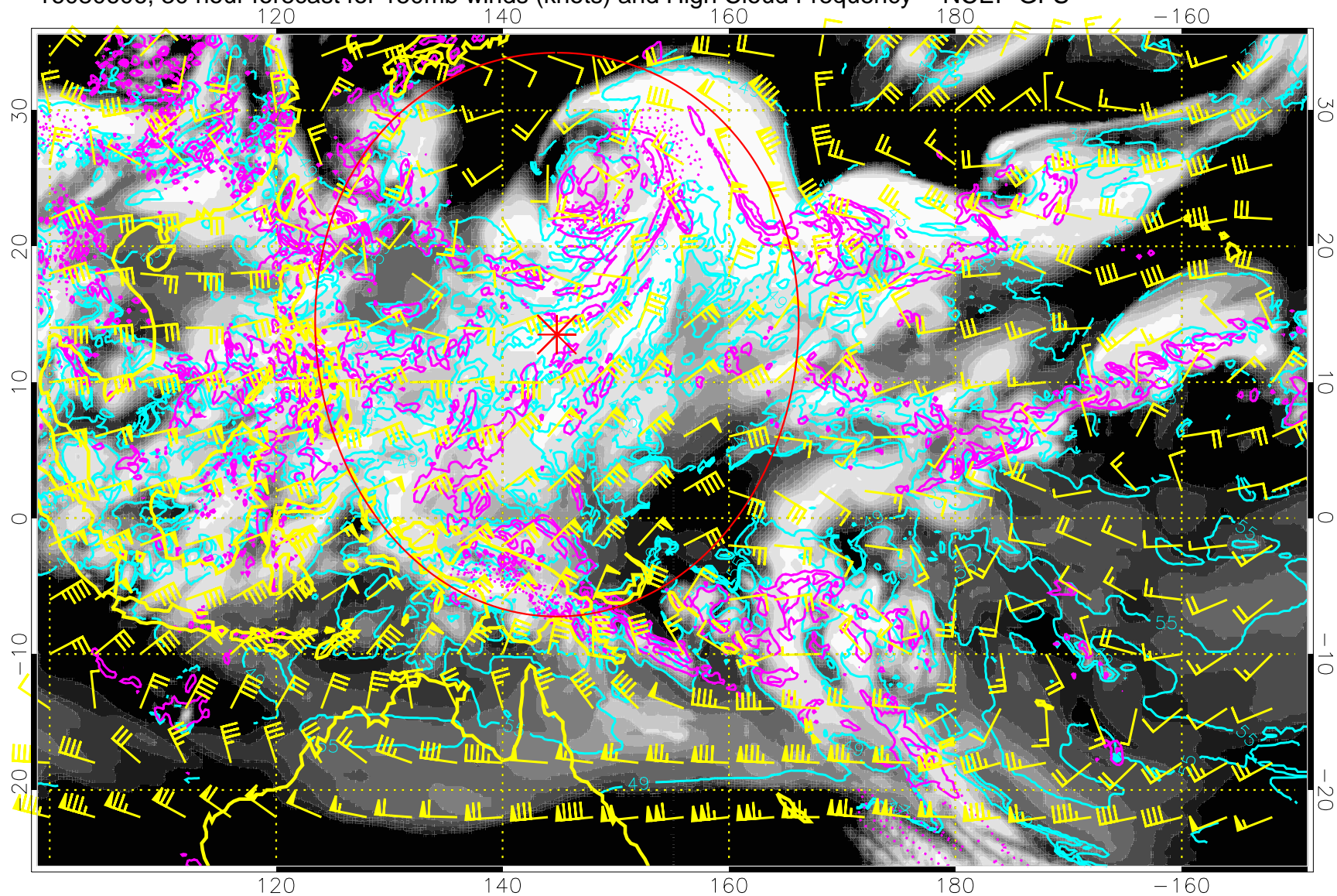
16080600, 24 hour forecast for 150mb winds (knots) and High Cloud Frequency -- NCEP GFS



High Cloud Altitude from 37 kft at 6 kft intervals  
Precip (tot dot, conv sol) mm/day 40 mm/day contours, min 20

Range ring of 2304 km

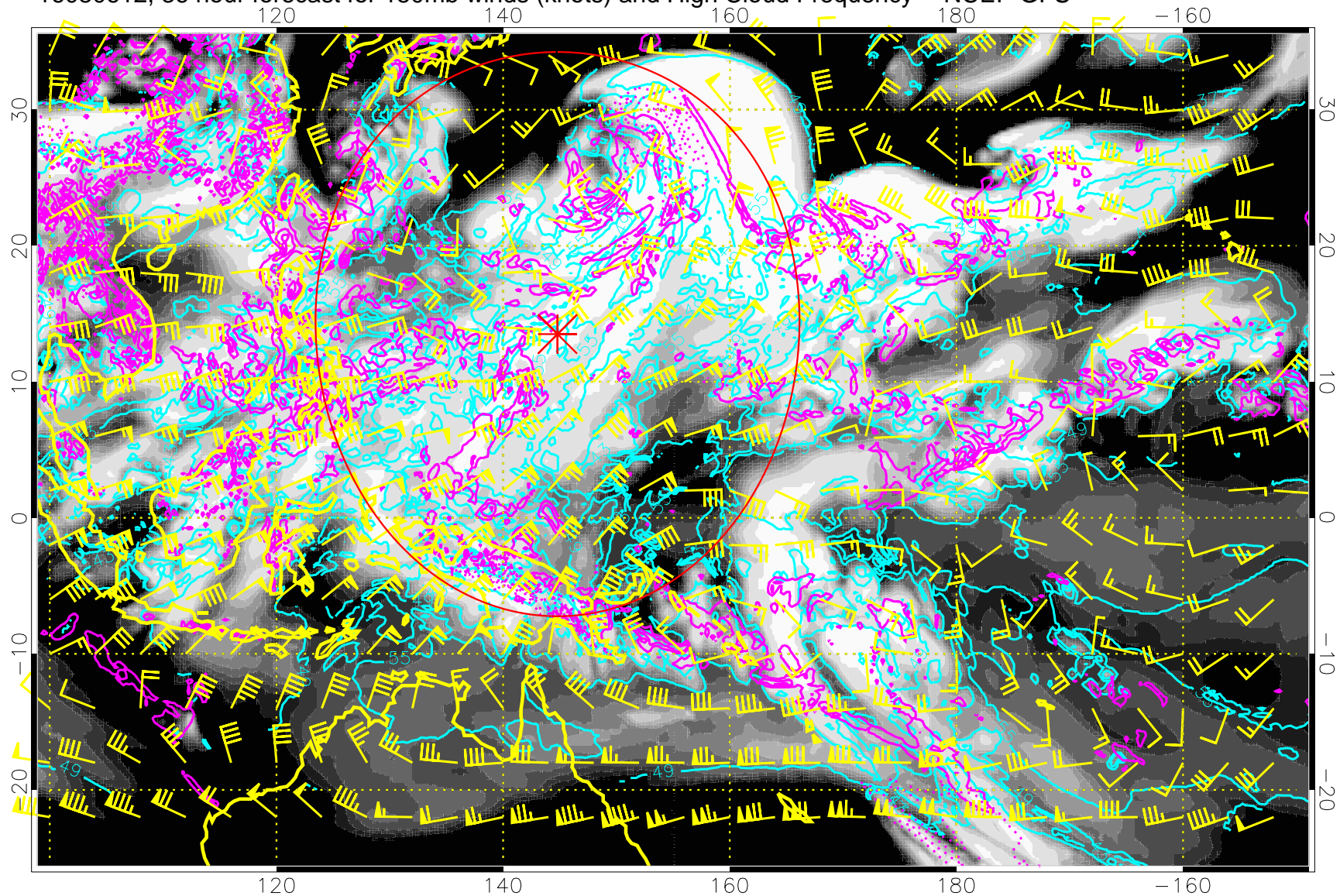
16080606, 30 hour forecast for 150mb winds (knots) and High Cloud Frequency -- NCEP GFS



High Cloud Altitude from 37 kft at 6 kft intervals  
Precip (tot dot, conv sol) mm/day 40 mm/day contours, min 20

Range ring of 2304 km

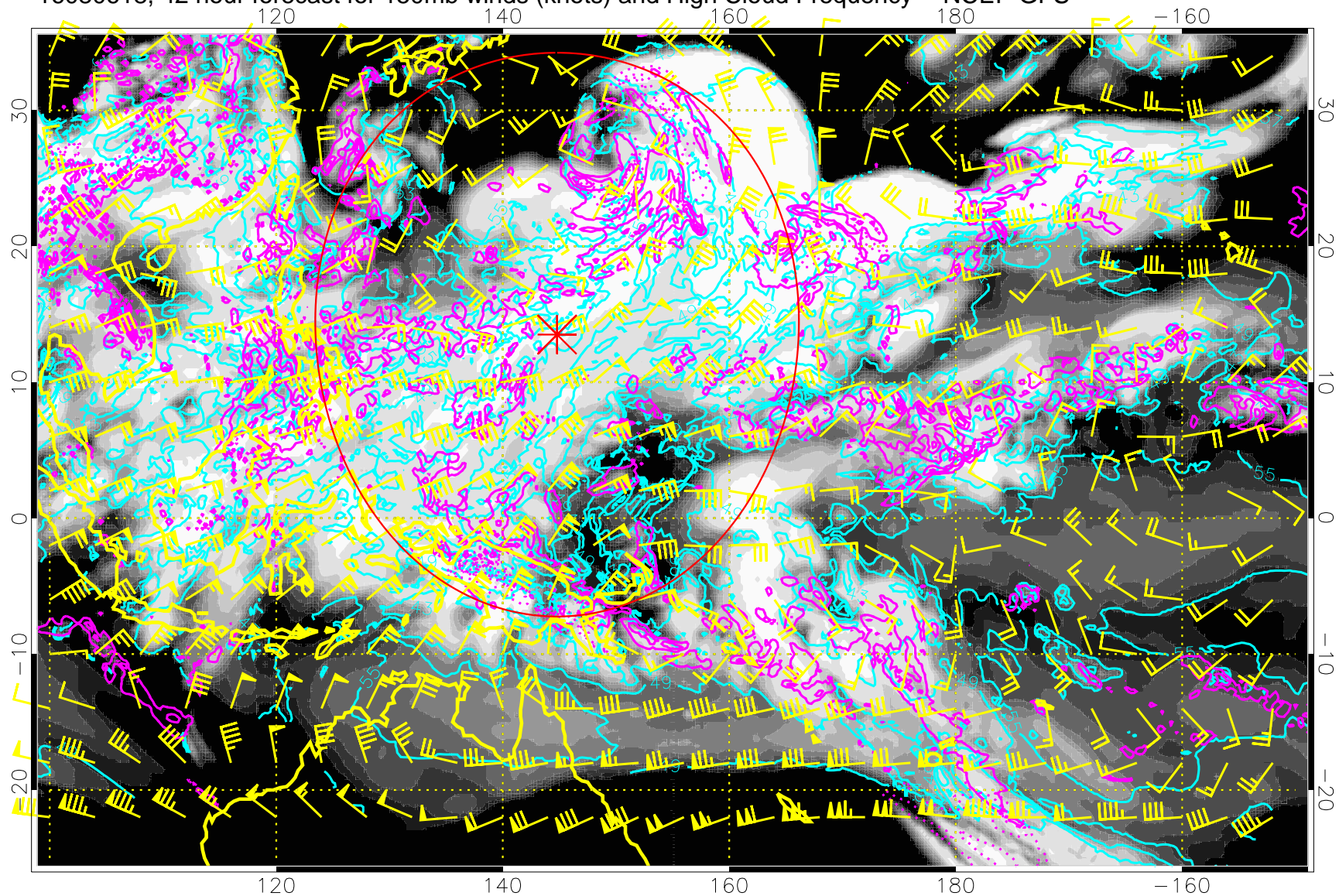
16080612, 36 hour forecast for 150mb winds (knots) and High Cloud Frequency -- NCEP GFS



High Cloud Altitude from 37 kft at 6 kft intervals  
Precip (tot dot, conv sol) mm/day 40 mm/day contours, min 20

Range ring of 2304 km

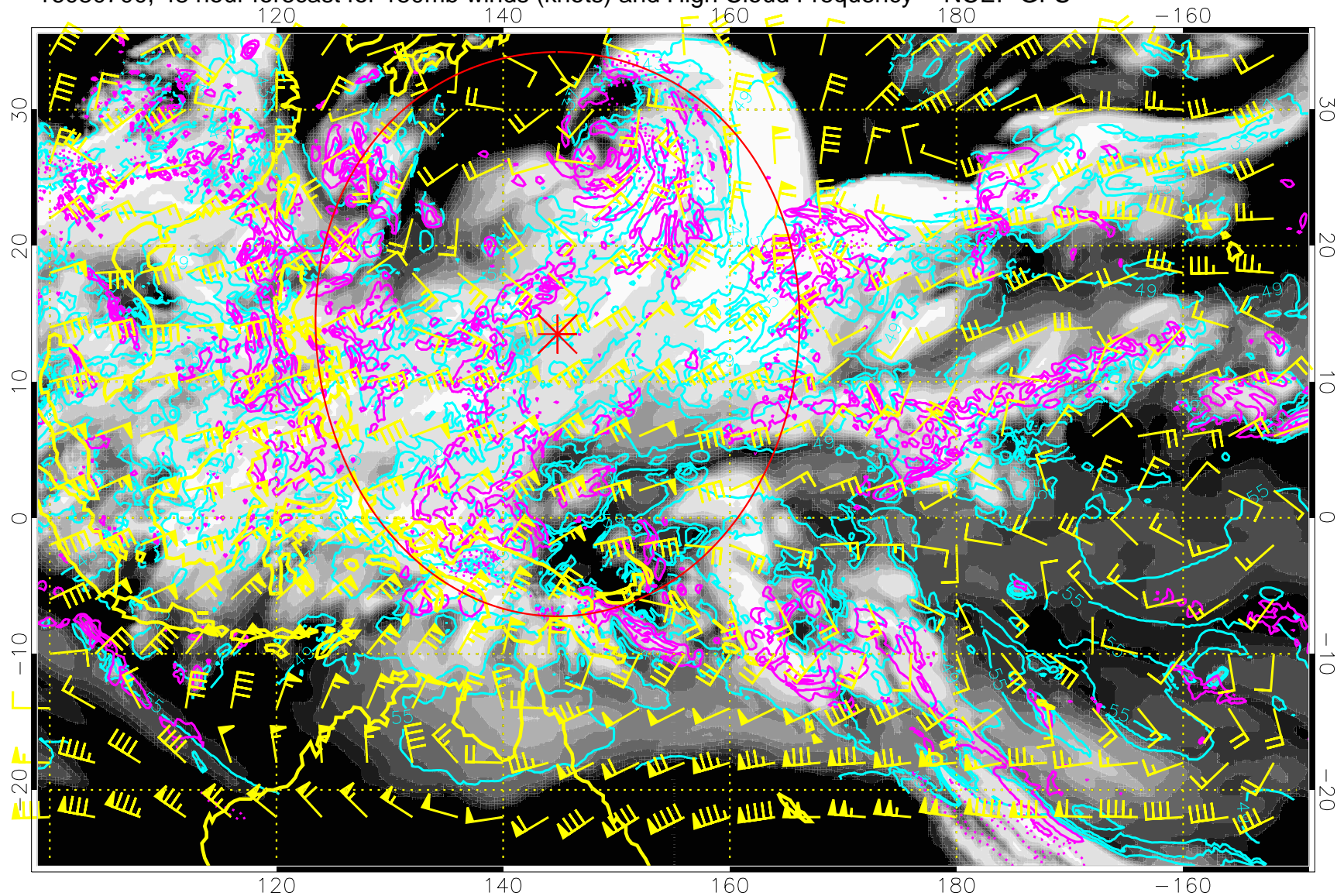
16080618, 42 hour forecast for 150mb winds (knots) and High Cloud Frequency -- NCEP GFS



High Cloud Altitude from 37 kft at 6 kft intervals  
Precip (tot dot, conv sol) mm/day 40 mm/day contours, min 20

Range ring of 2304 km

16080700, 48 hour forecast for 150mb winds (knots) and High Cloud Frequency -- NCEP GFS

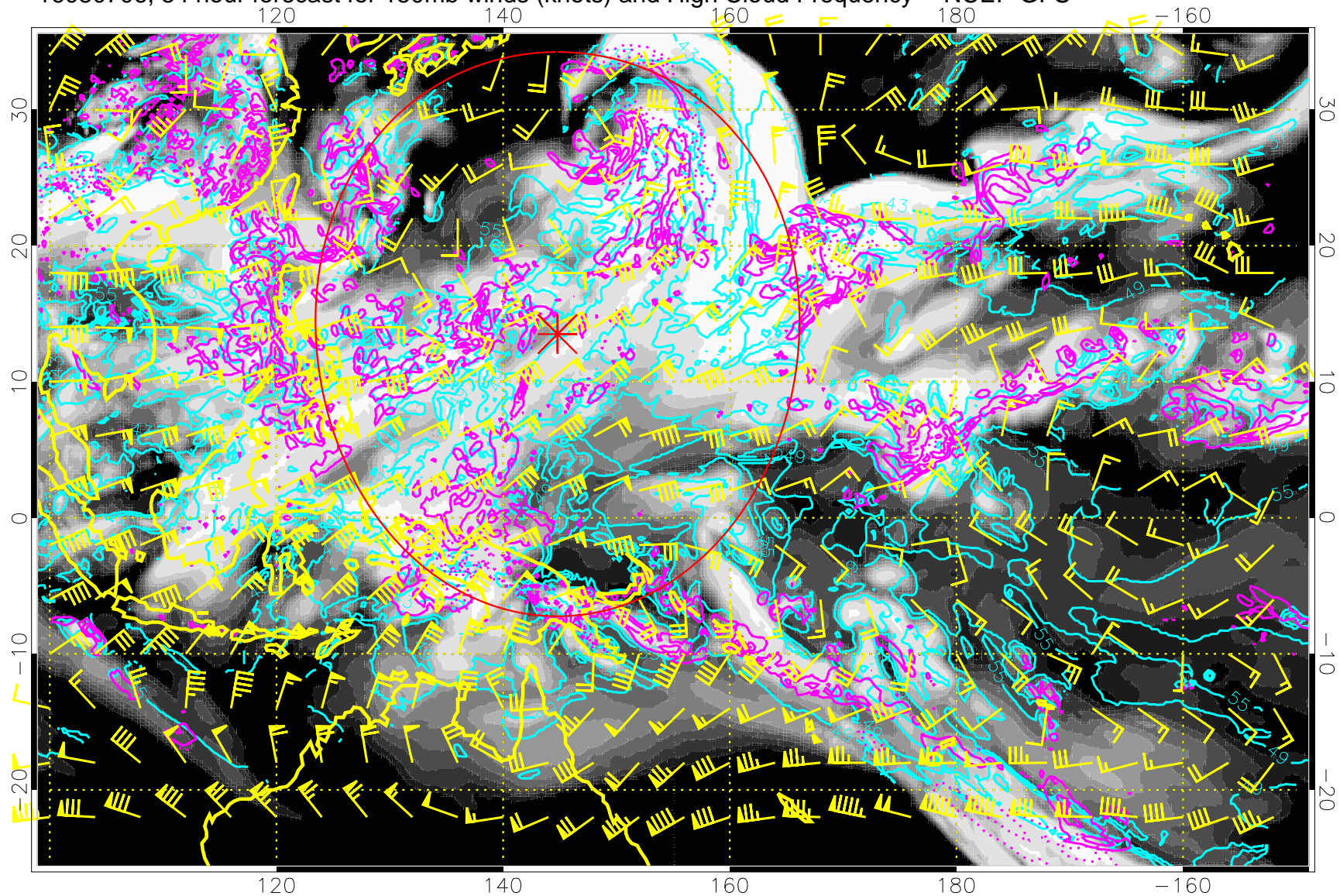


High Cloud Altitude from 37 kft at 6 kft intervals  
Precip (tot dot, conv sol) mm/day 40 mm/day contours, min 20

Range ring of 2304 km



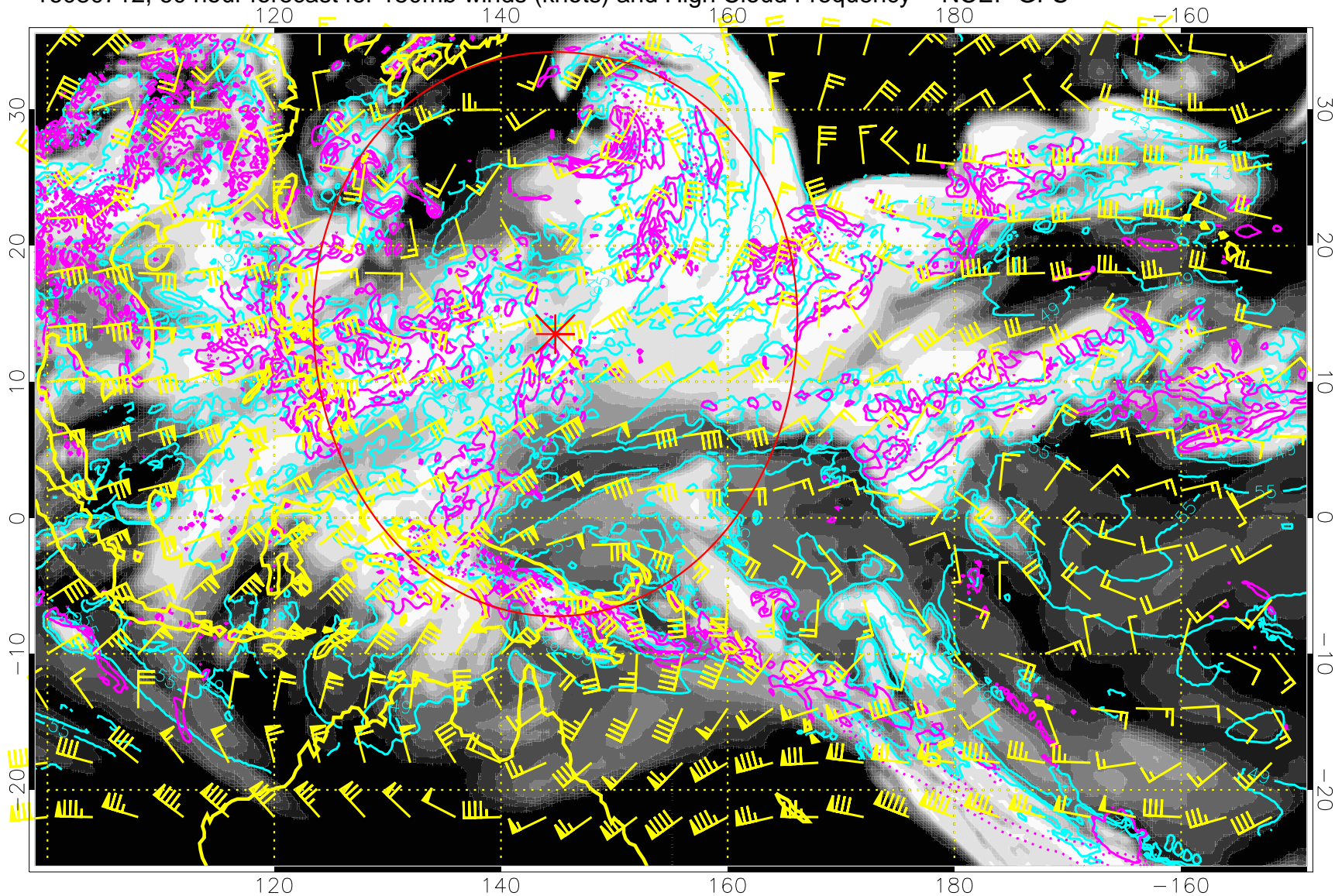
16080706, 54 hour forecast for 150mb winds (knots) and High Cloud Frequency -- NCEP GFS



High Cloud Altitude from 37 kft at 6 kft intervals  
Precip (tot dot, conv sol) mm/day 40 mm/day contours, min 20

Range ring of 2304 km

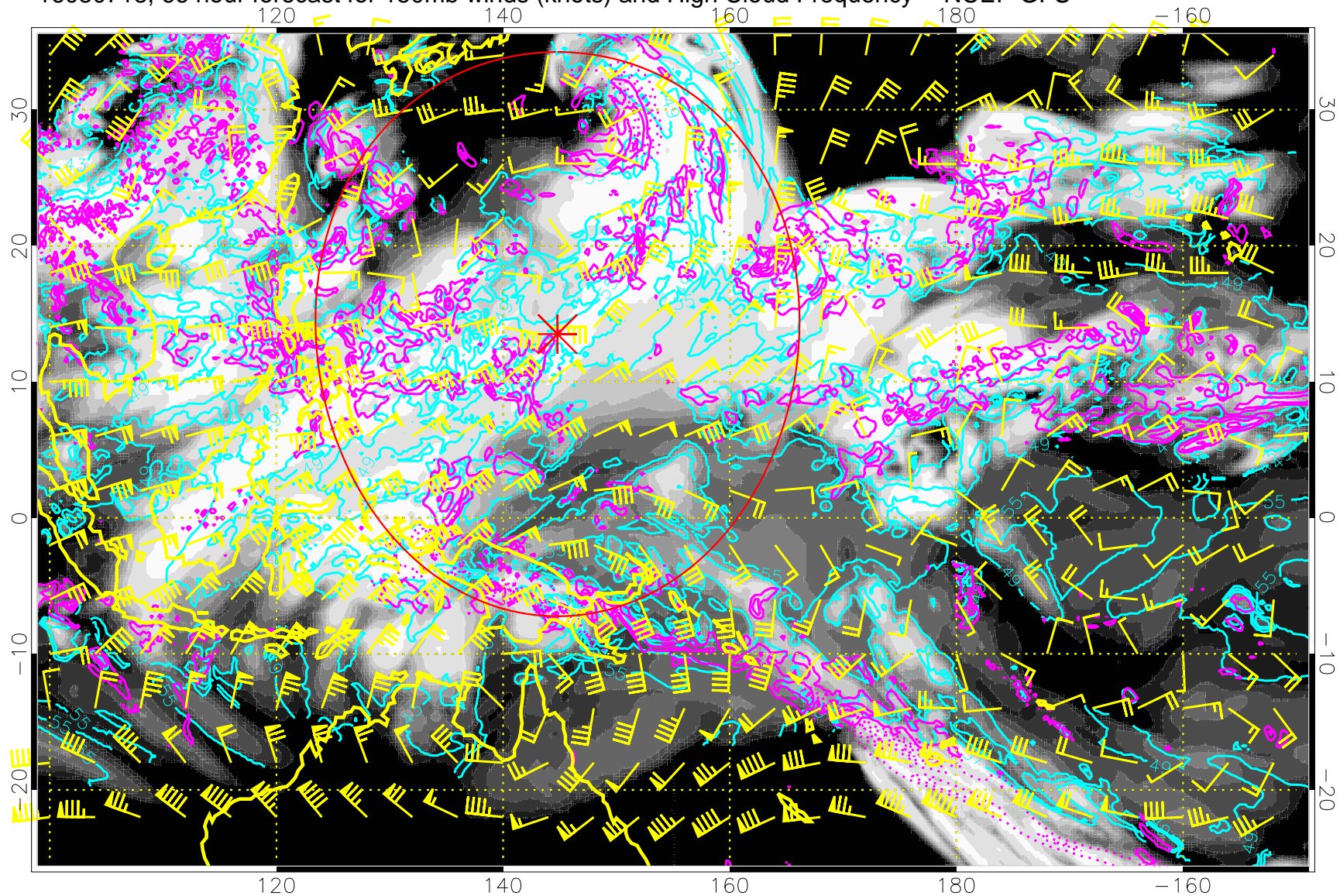
16080712, 60 hour forecast for 150mb winds (knots) and High Cloud Frequency -- NCEP GFS



High Cloud Altitude from 37 kft at 6 kft intervals  
Precip (tot dot, conv sol) mm/day 40 mm/day contours, min 20

Range ring of 2304 km

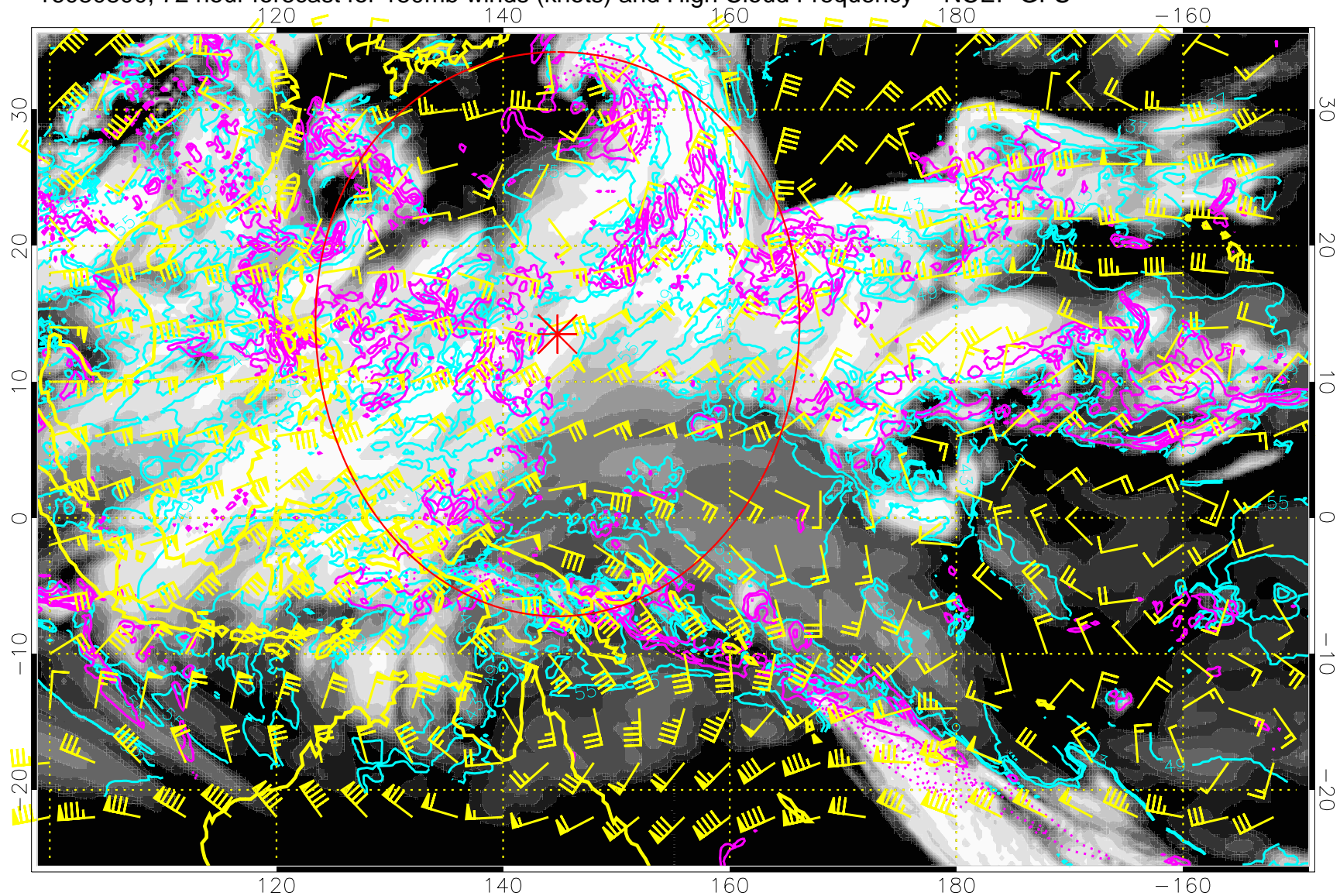
16080718, 66 hour forecast for 150mb winds (knots) and High Cloud Frequency -- NCEP GFS



High Cloud Altitude from 37 kft at 6 kft intervals  
Precip (tot dot, conv sol) mm/day 40 mm/day contours, min 20

Range ring of 2304 km

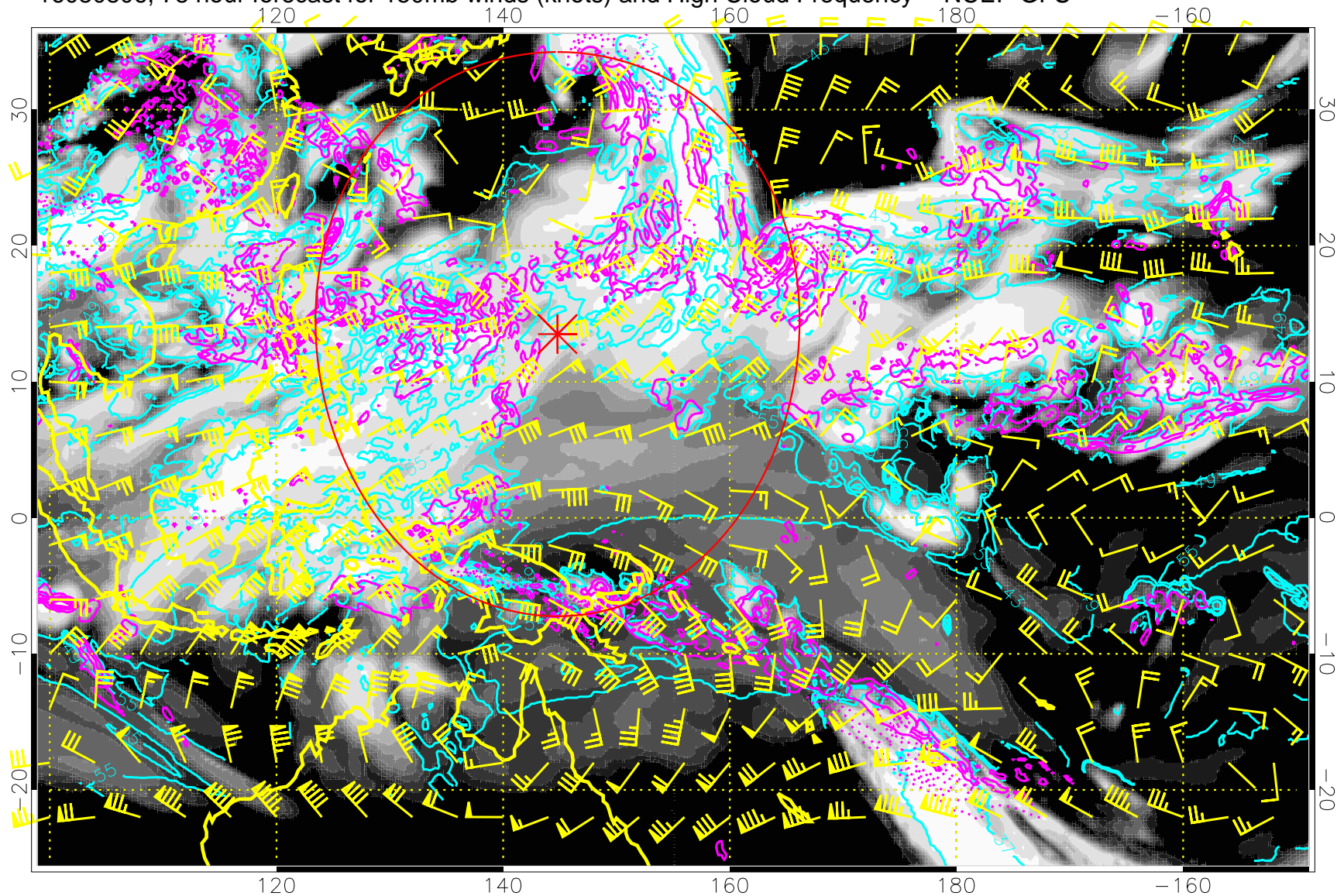
16080800, 72 hour forecast for 150mb winds (knots) and High Cloud Frequency -- NCEP GFS



High Cloud Altitude from 37 kft at 6 kft intervals  
Precip (tot dot, conv sol) mm/day 40 mm/day contours, min 20

Range ring of 2304 km

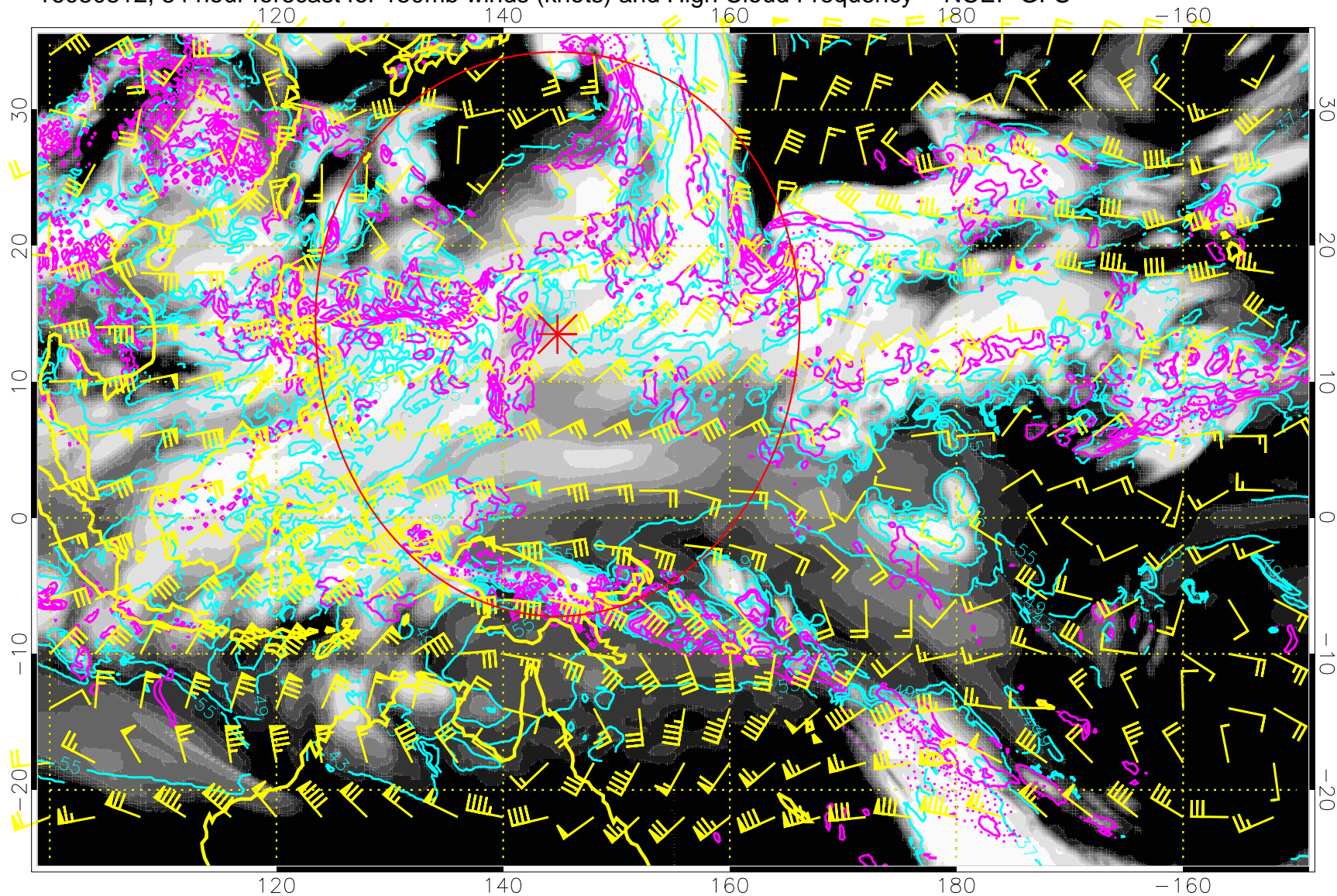
16080806, 78 hour forecast for 150mb winds (knots) and High Cloud Frequency -- NCEP GFS



High Cloud Altitude from 37 kft at 6 kft intervals  
Precip (tot dot, conv sol) mm/day 40 mm/day contours, min 20

Range ring of 2304 km

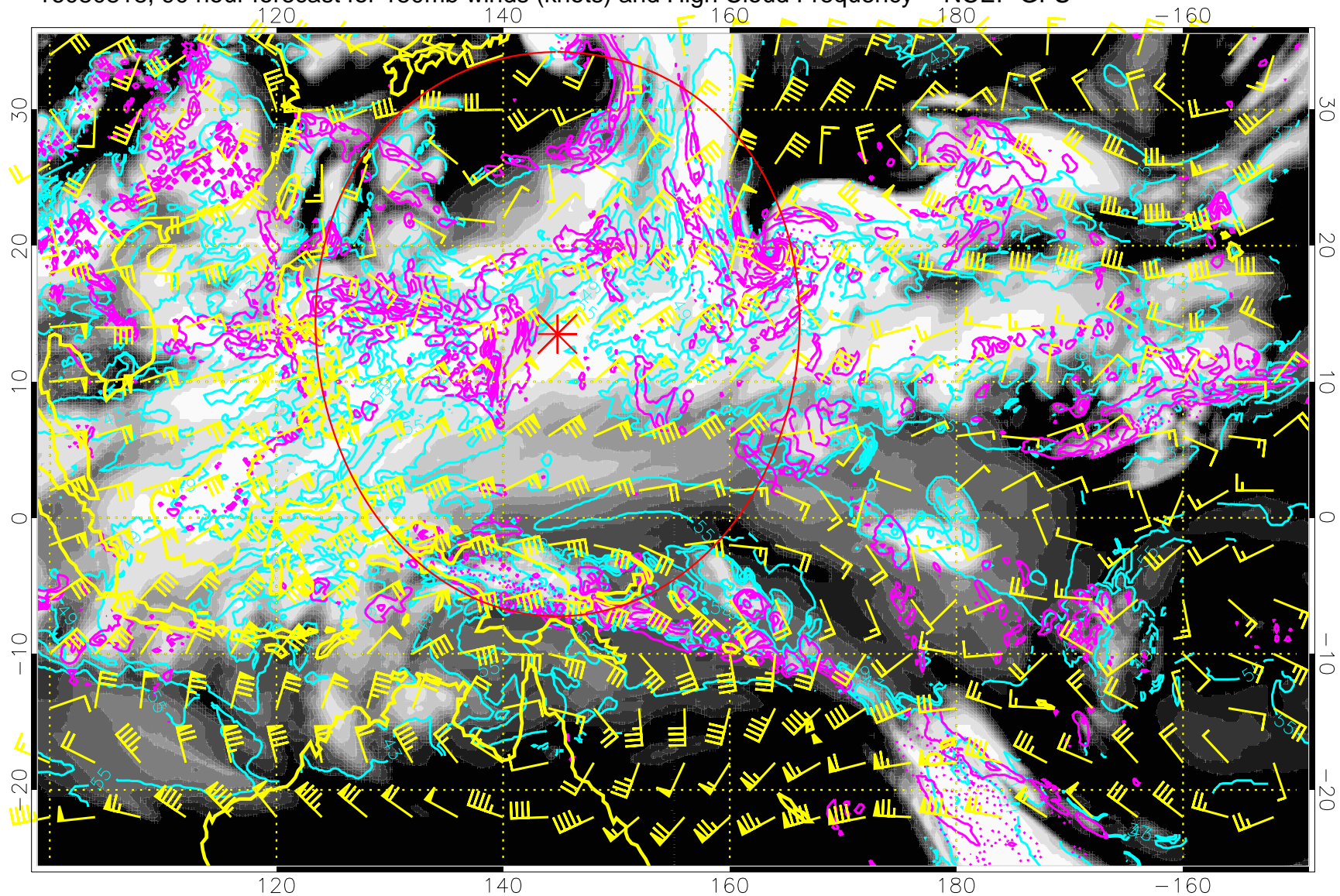
16080812, 84 hour forecast for 150mb winds (knots) and High Cloud Frequency -- NCEP GFS



High Cloud Altitude from 37 kft at 6 kft intervals  
Precip (tot dot, conv sol) mm/day 40 mm/day contours, min 20

Range ring of 2304 km

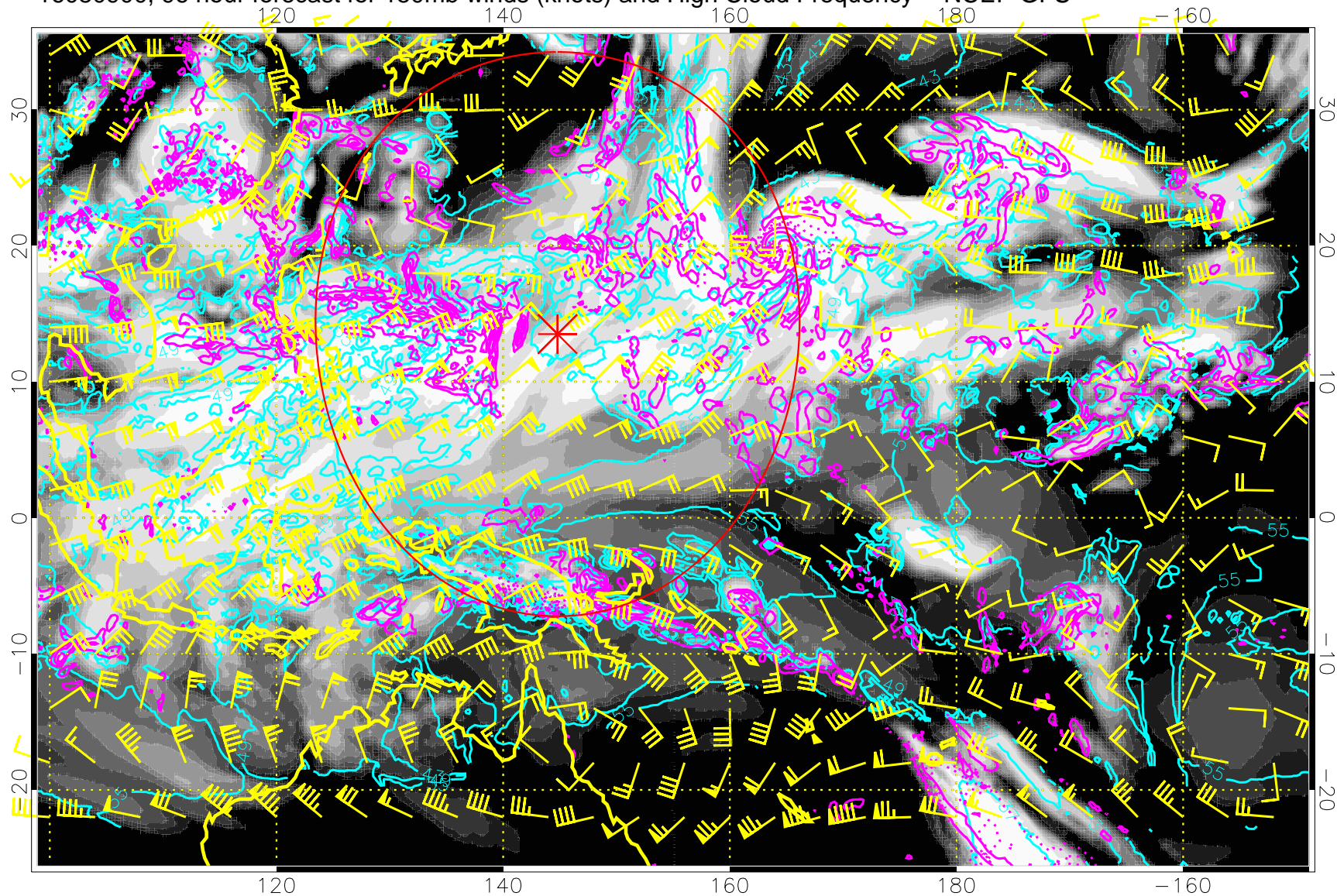
16080818, 90 hour forecast for 150mb winds (knots) and High Cloud Frequency -- NCEP GFS



High Cloud Altitude from 37 kft at 6 kft intervals  
Precip (tot dot, conv sol) mm/day 40 mm/day contours, min 20

Range ring of 2304 km

16080900, 96 hour forecast for 150mb winds (knots) and High Cloud Frequency -- NCEP GFS

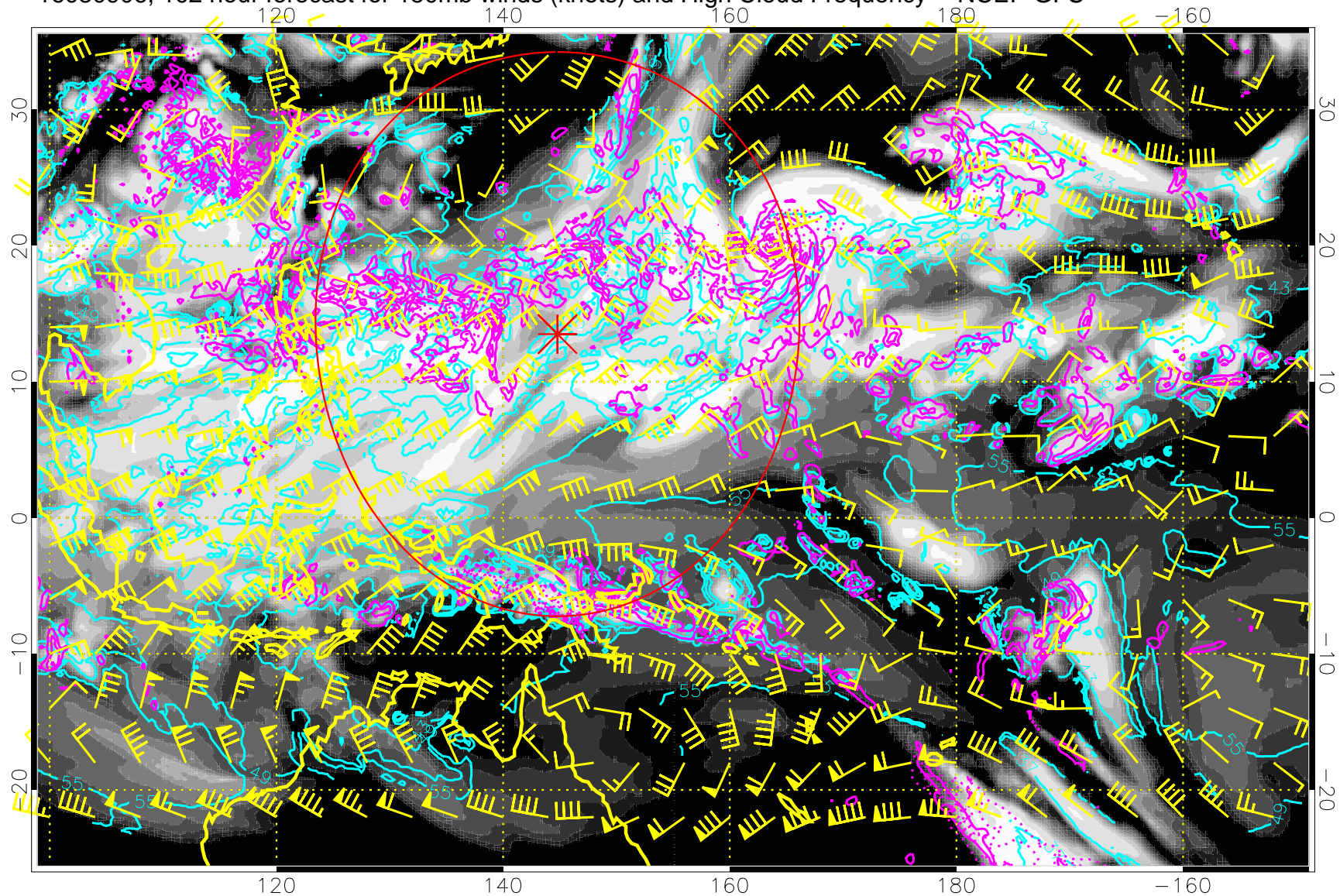


High Cloud Altitude from 37 kft at 6 kft intervals  
Precip (tot dot, conv sol) mm/day 40 mm/day contours, min 20

Range ring of 2304 km



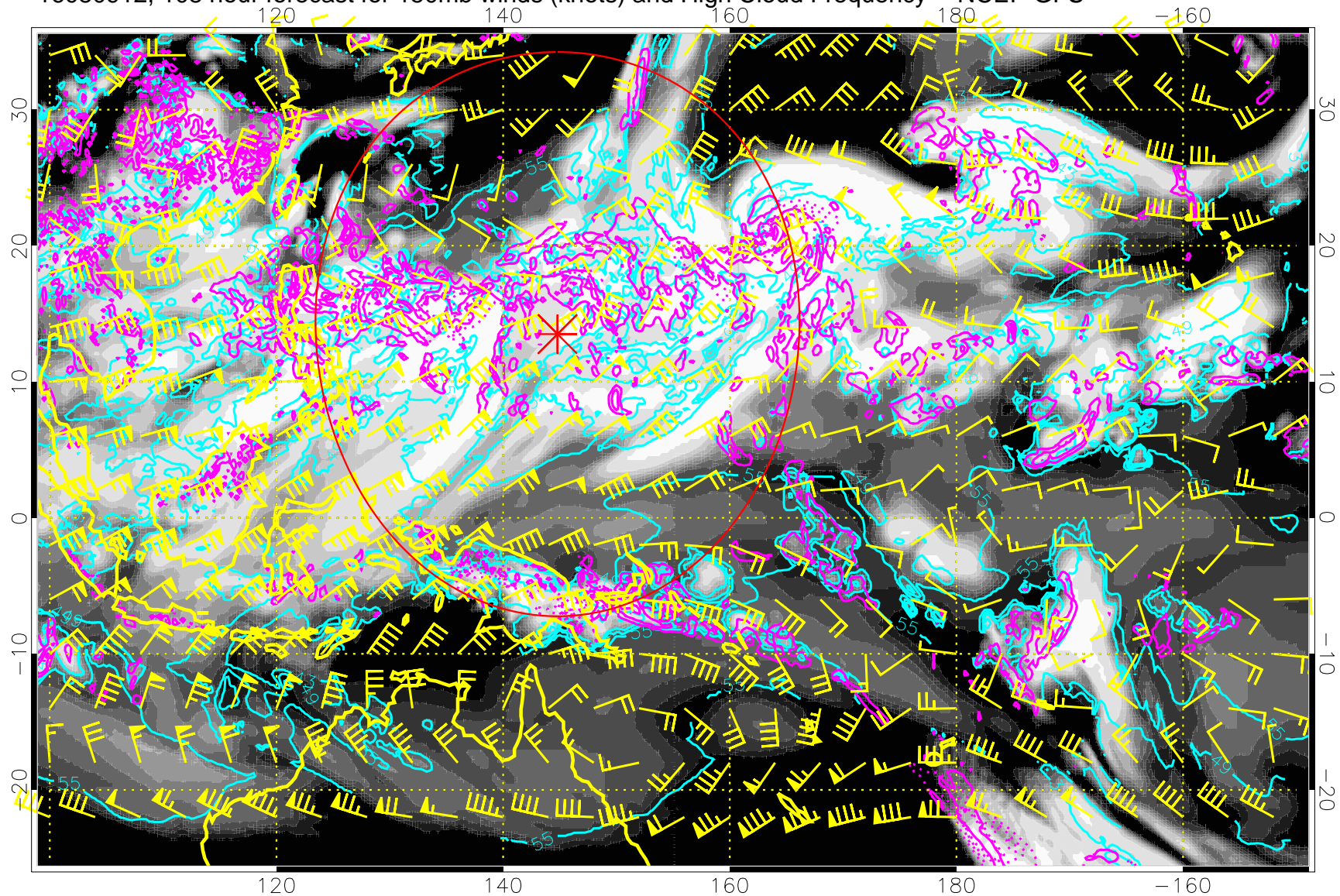
16080906, 102 hour forecast for 150mb winds (knots) and High Cloud Frequency -- NCEP GFS



High Cloud Altitude from 37 kft at 6 kft intervals  
Precip (tot dot, conv sol) mm/day 40 mm/day contours, min 20

Range ring of 2304 km

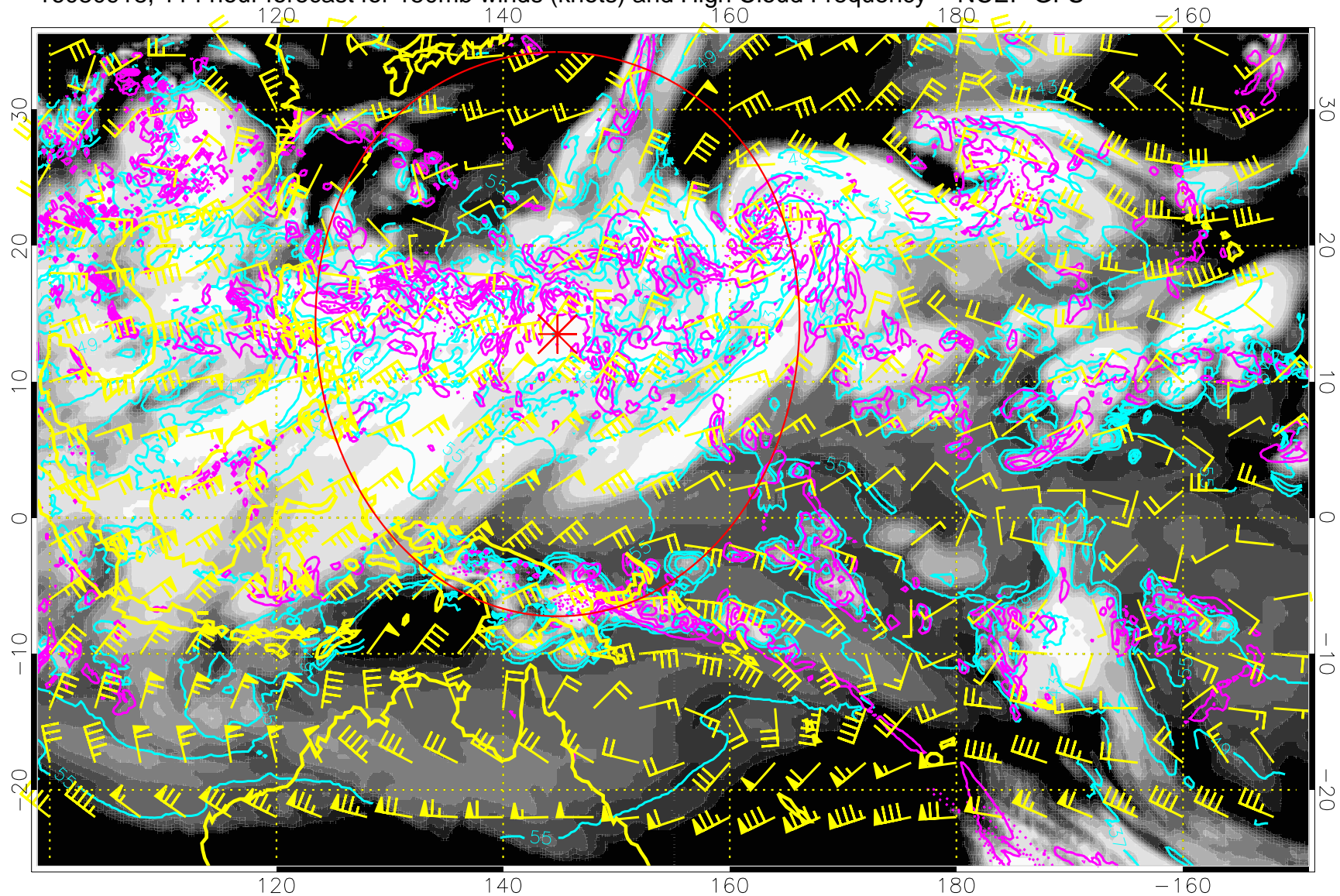
16080912, 108 hour forecast for 150mb winds (knots) and High Cloud Frequency -- NCEP GFS



High Cloud Altitude from 37 kft at 6 kft intervals  
Precip (tot dot, conv sol) mm/day 40 mm/day contours, min 20

Range ring of 2304 km

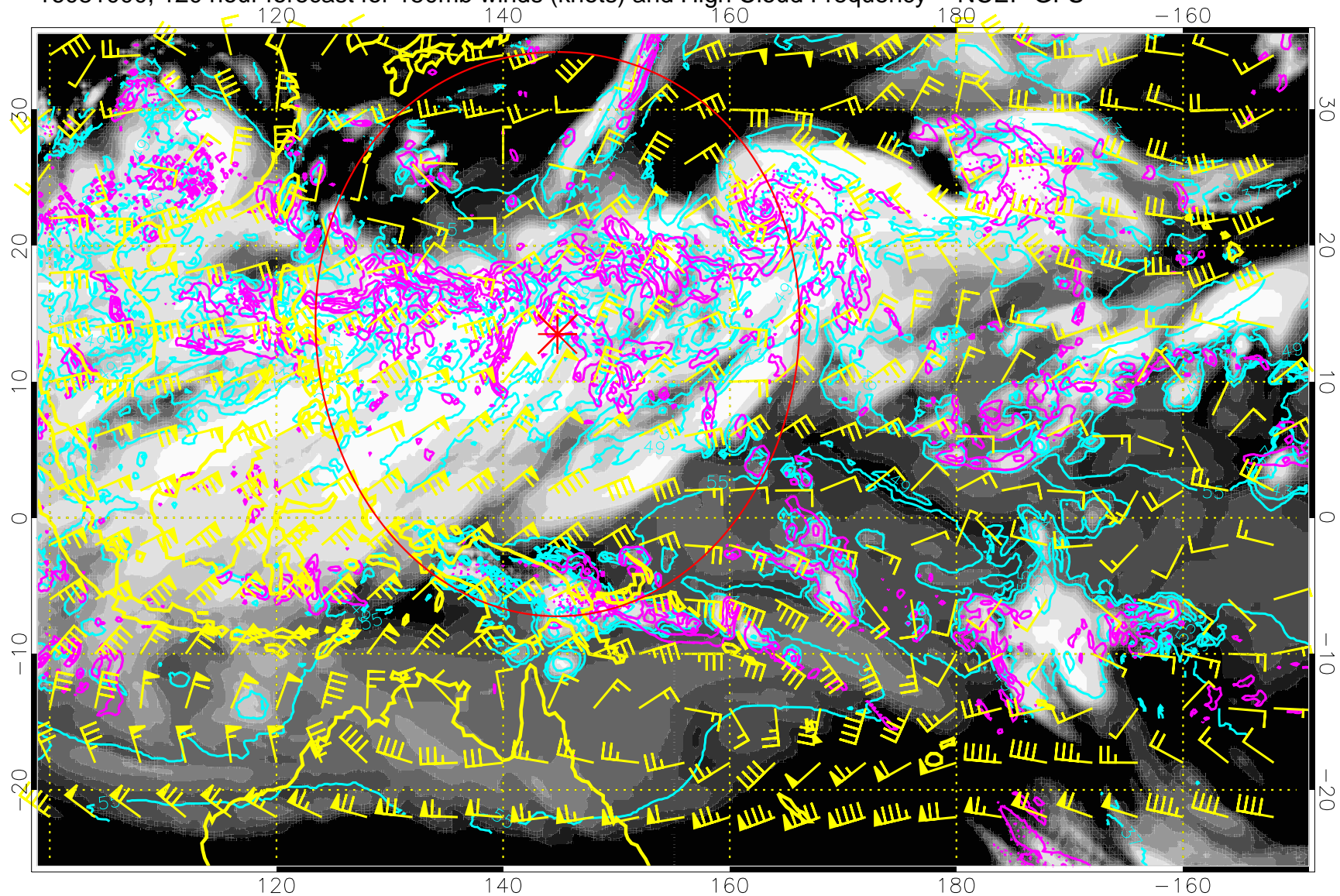
16080918, 114 hour forecast for 150mb winds (knots) and High Cloud Frequency -- NCEP GFS



High Cloud Altitude from 37 kft at 6 kft intervals  
Precip (tot dot, conv sol) mm/day 40 mm/day contours, min 20

Range ring of 2304 km

16081000, 120 hour forecast for 150mb winds (knots) and High Cloud Frequency -- NCEP GFS



High Cloud Altitude from 37 kft at 6 kft intervals  
Precip (tot dot, conv sol) mm/day 40 mm/day contours, min 20

Range ring of 2304 km