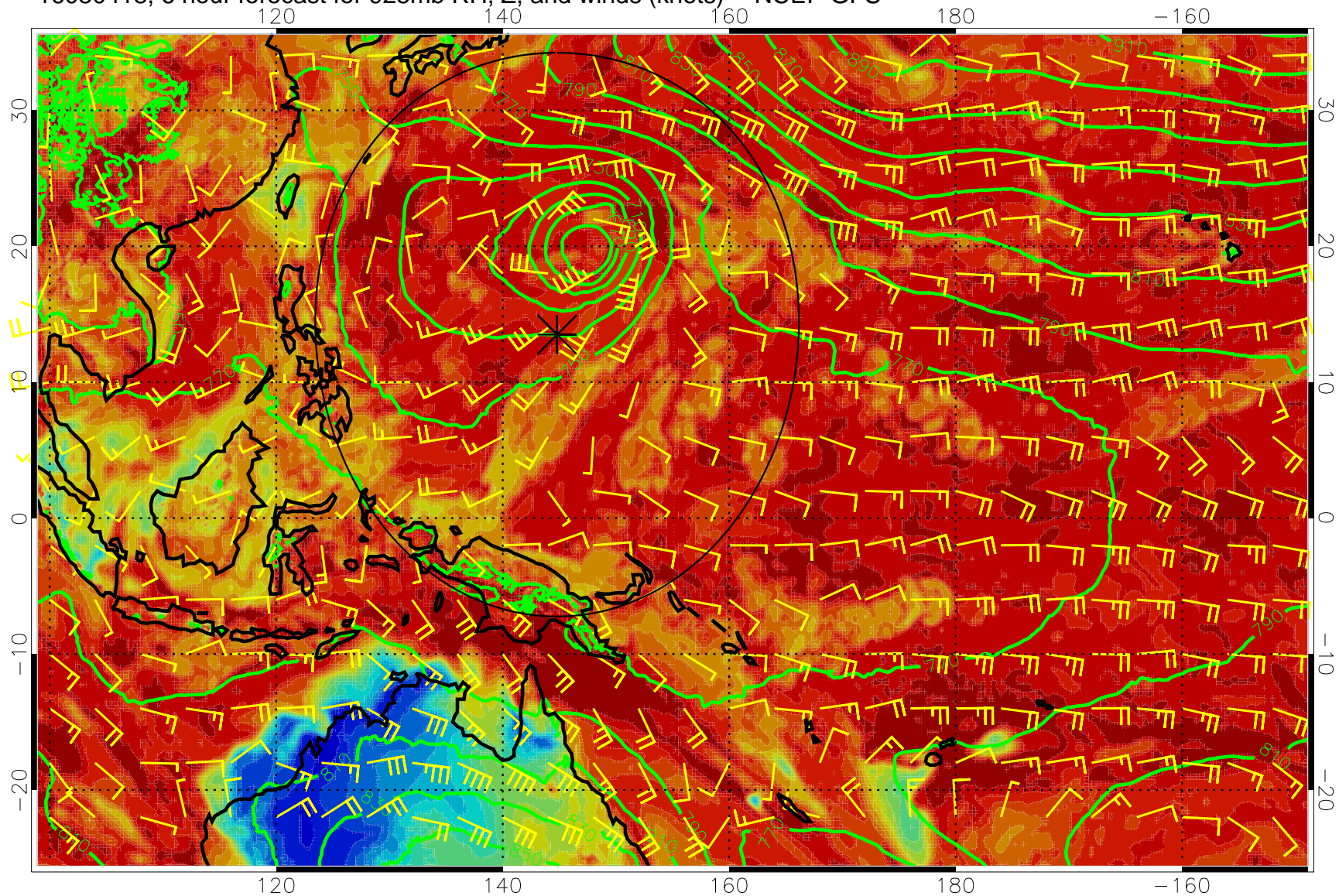
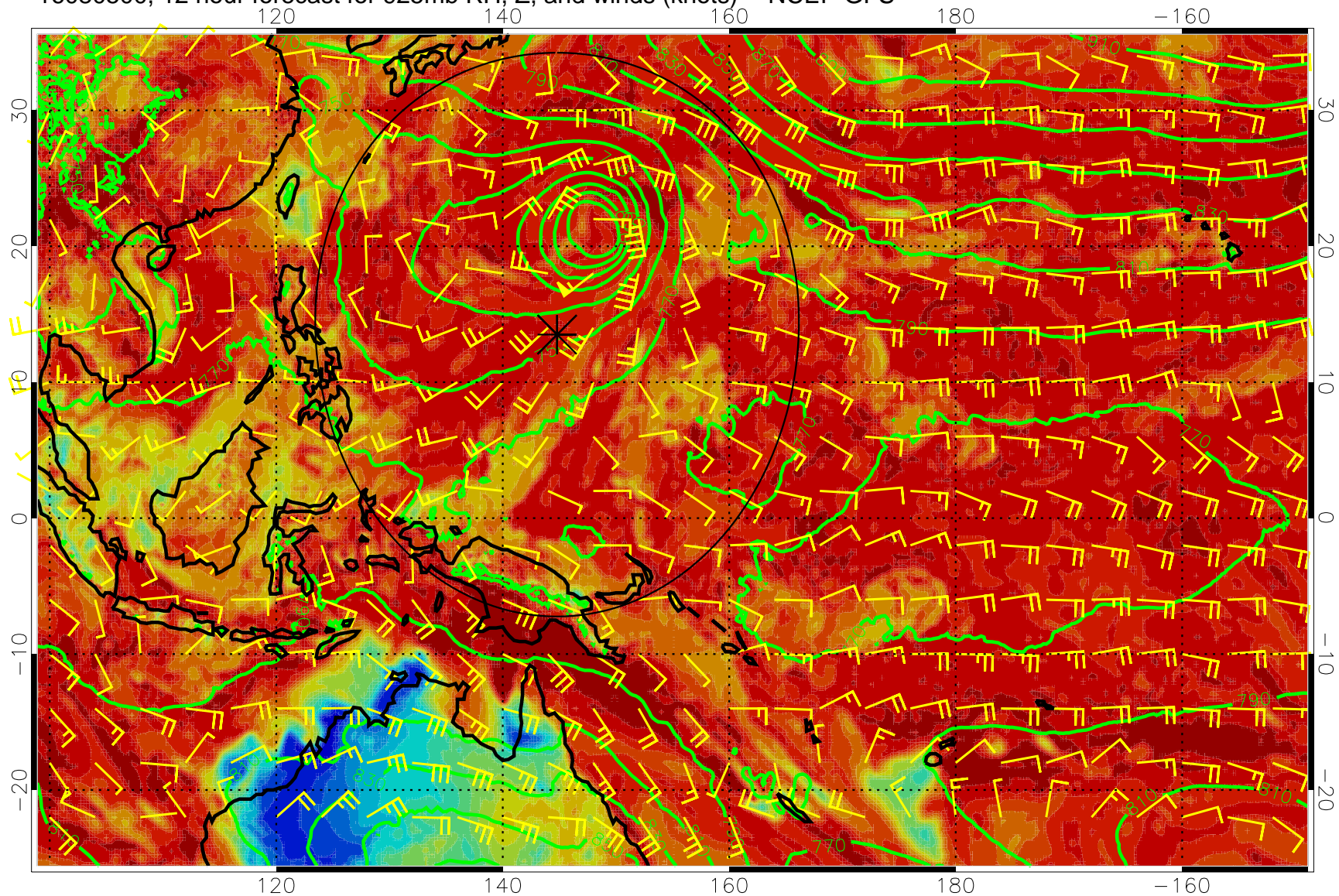


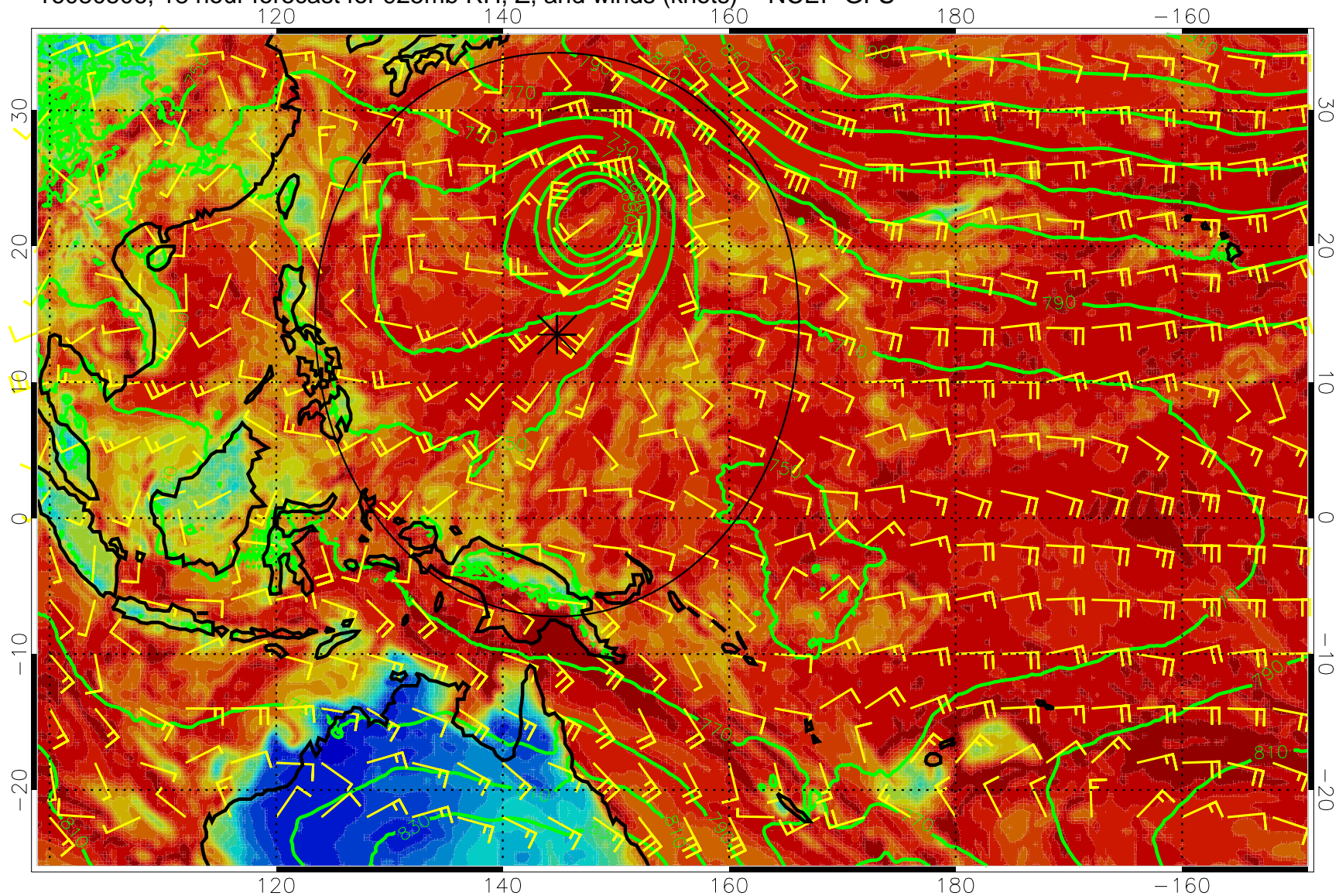
16080418, 6 hour forecast for 925mb RH, Z, and winds (knots) -- NCEP GFS



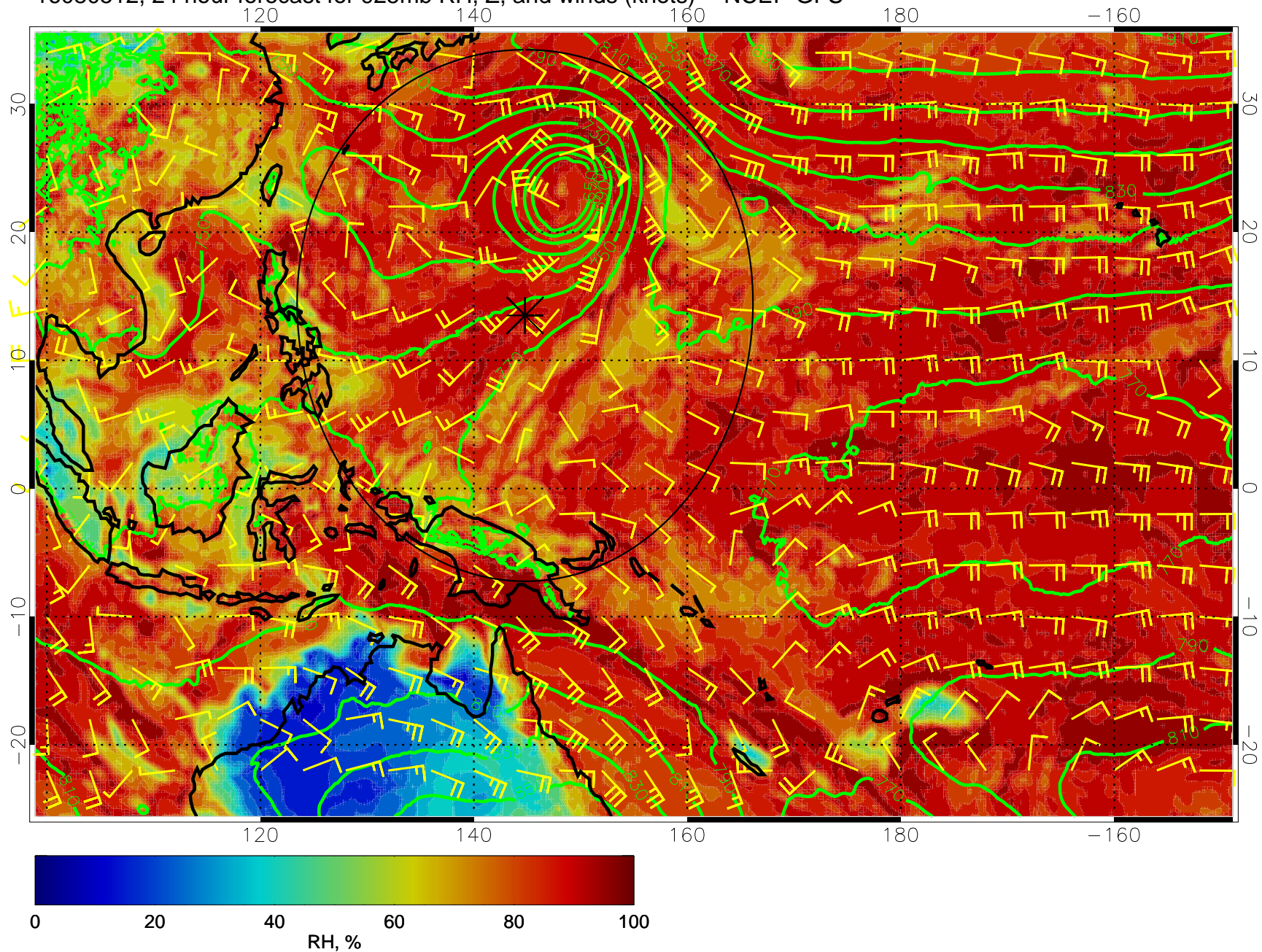
16080500, 12 hour forecast for 925mb RH, Z, and winds (knots) -- NCEP GFS



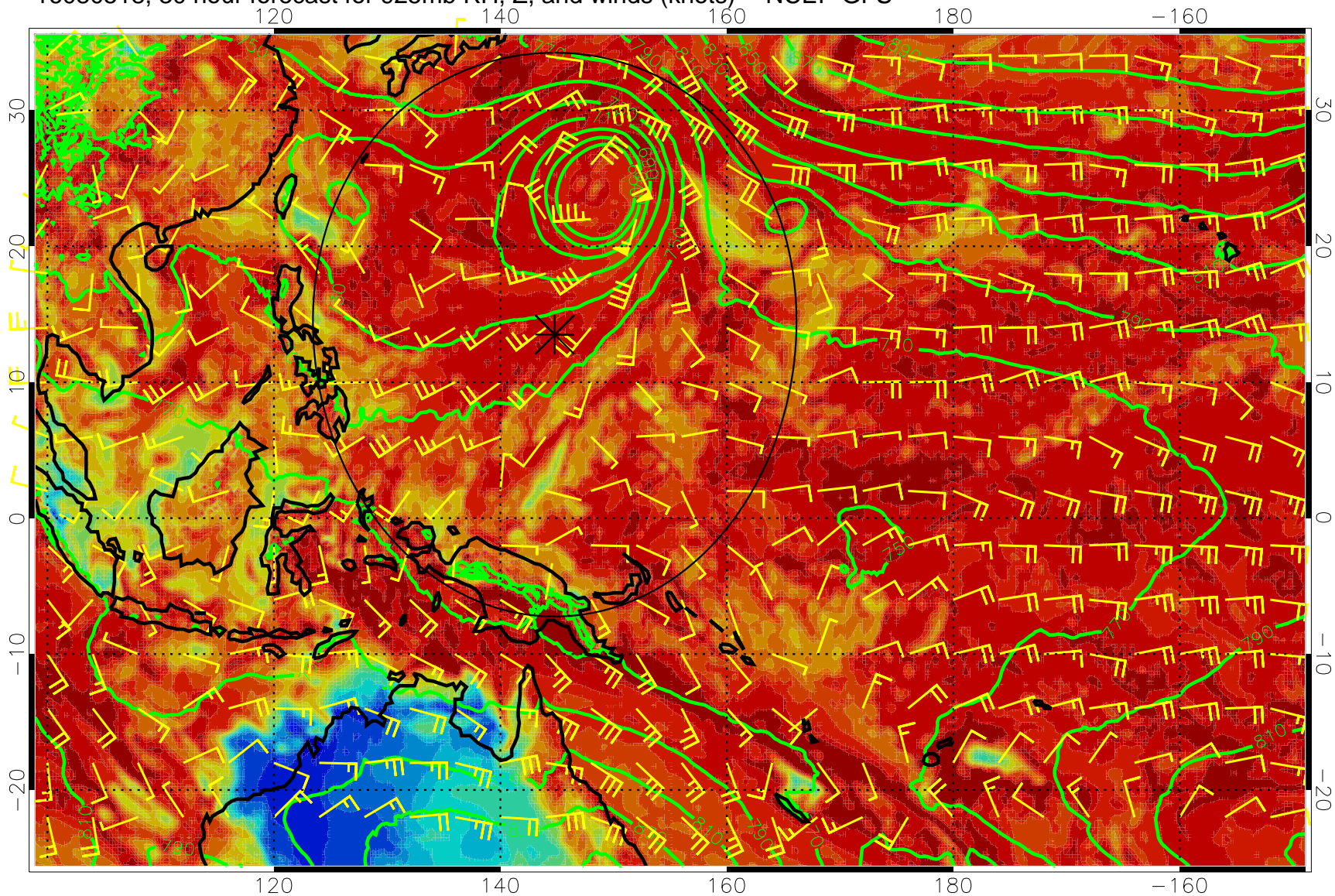
16080506, 18 hour forecast for 925mb RH, Z, and winds (knots) -- NCEP GFS



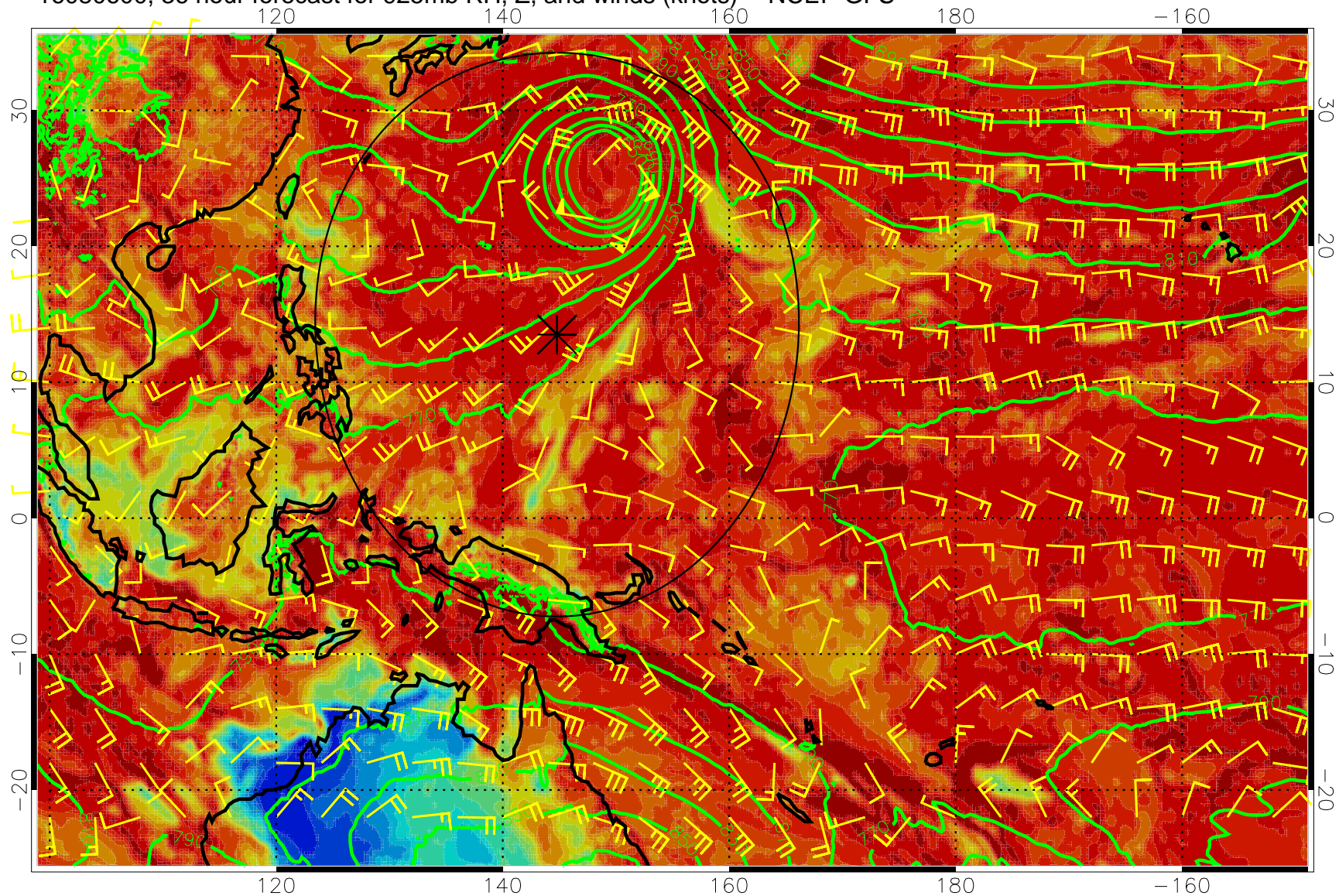
16080512, 24 hour forecast for 925mb RH, Z, and winds (knots) -- NCEP GFS



16080518, 30 hour forecast for 925mb RH, Z, and winds (knots) -- NCEP GFS

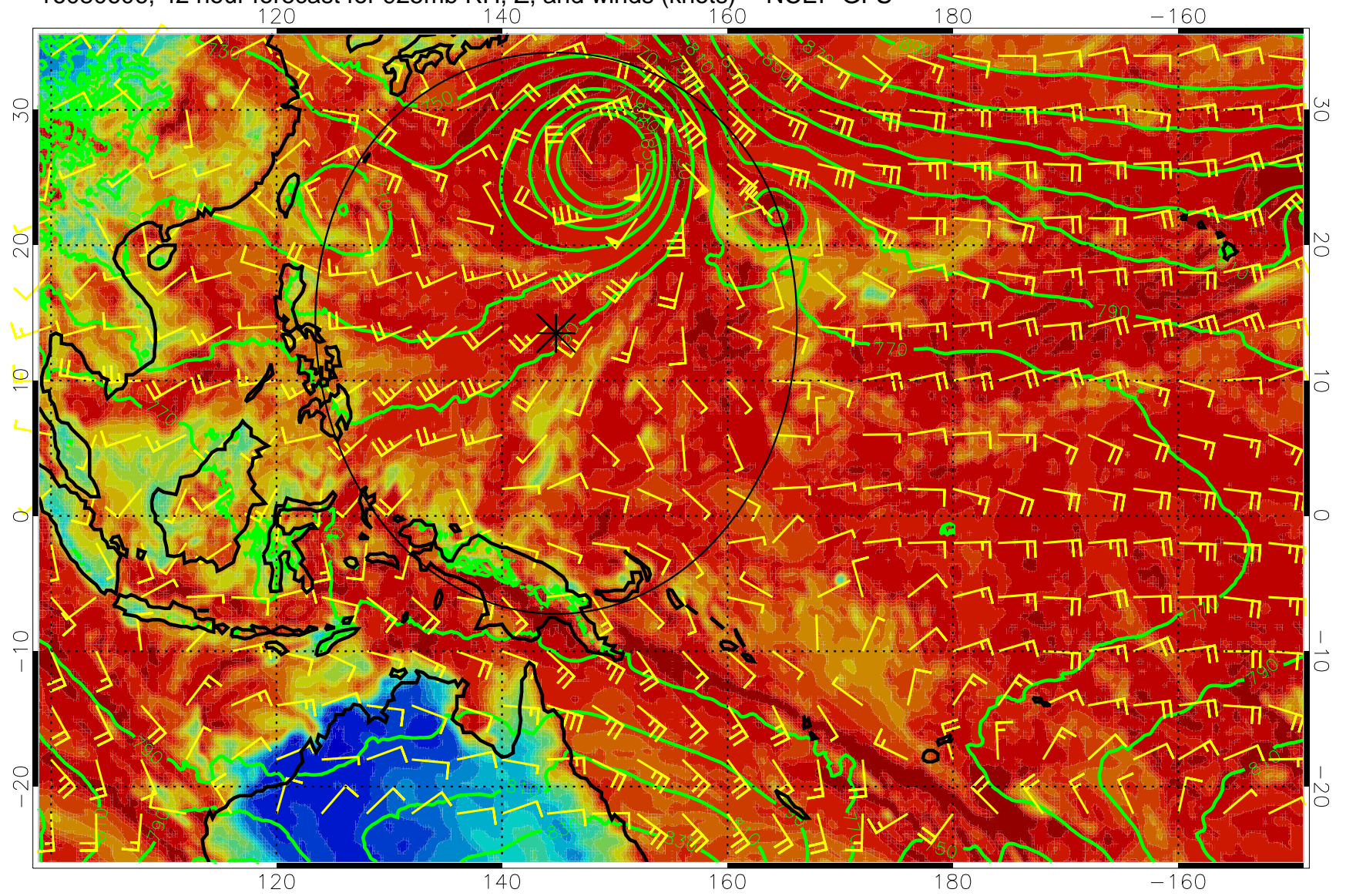


16080600, 36 hour forecast for 925mb RH, Z, and winds (knots) -- NCEP GFS

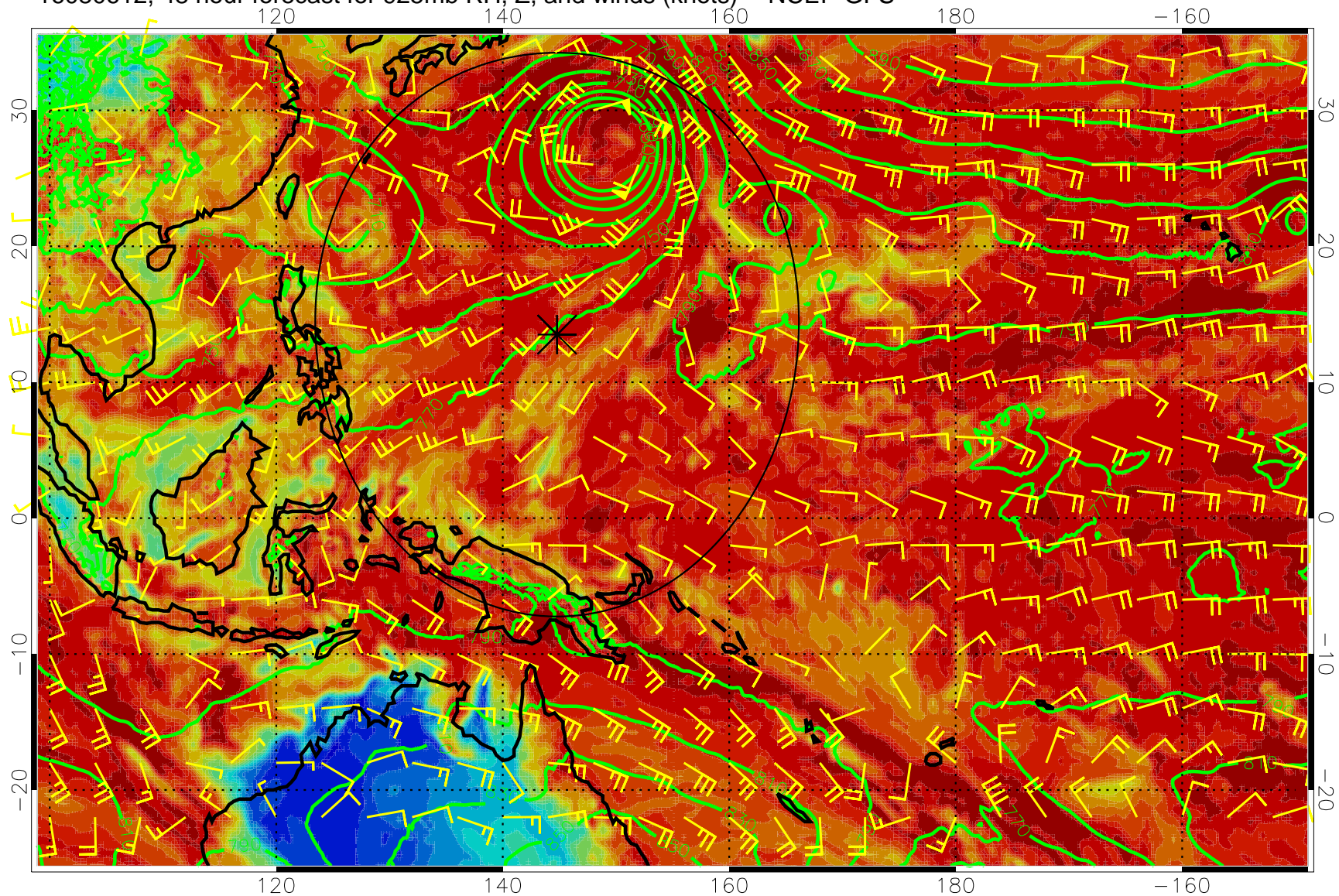


0 20 40 60 80 100
RH, %

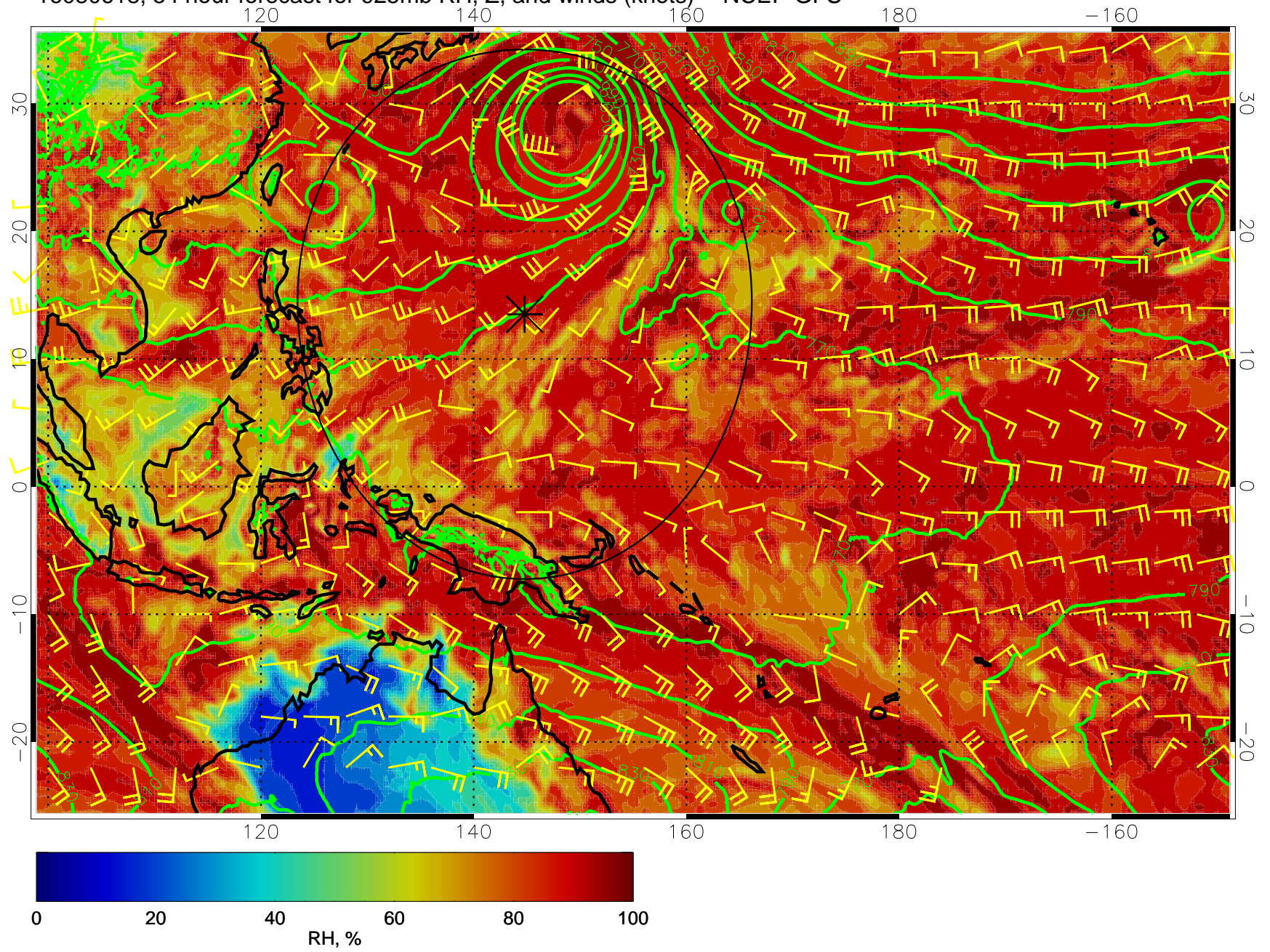
16080606, 42 hour forecast for 925mb RH, Z, and winds (knots) -- NCEP GFS



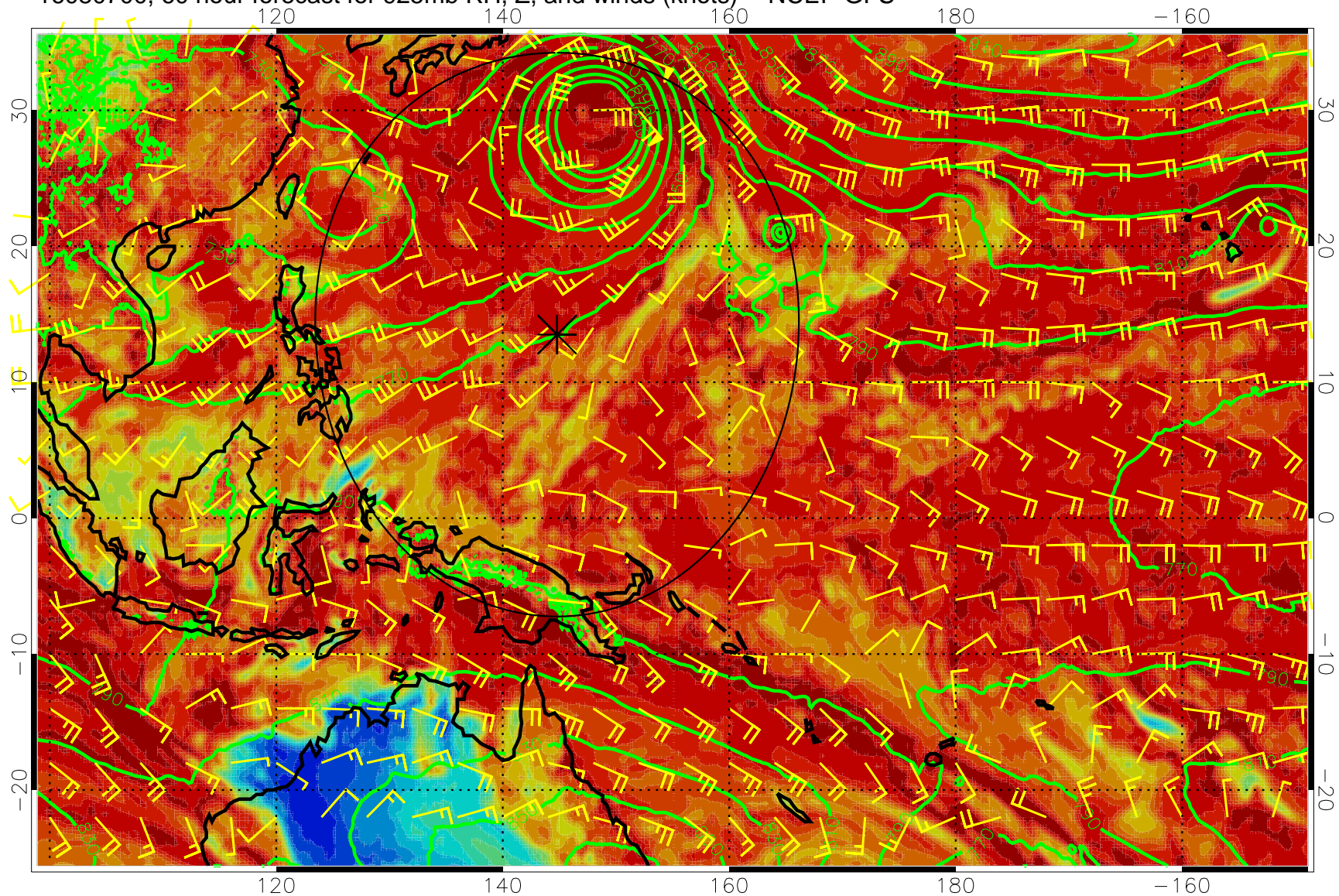
16080612, 48 hour forecast for 925mb RH, Z, and winds (knots) -- NCEP GFS



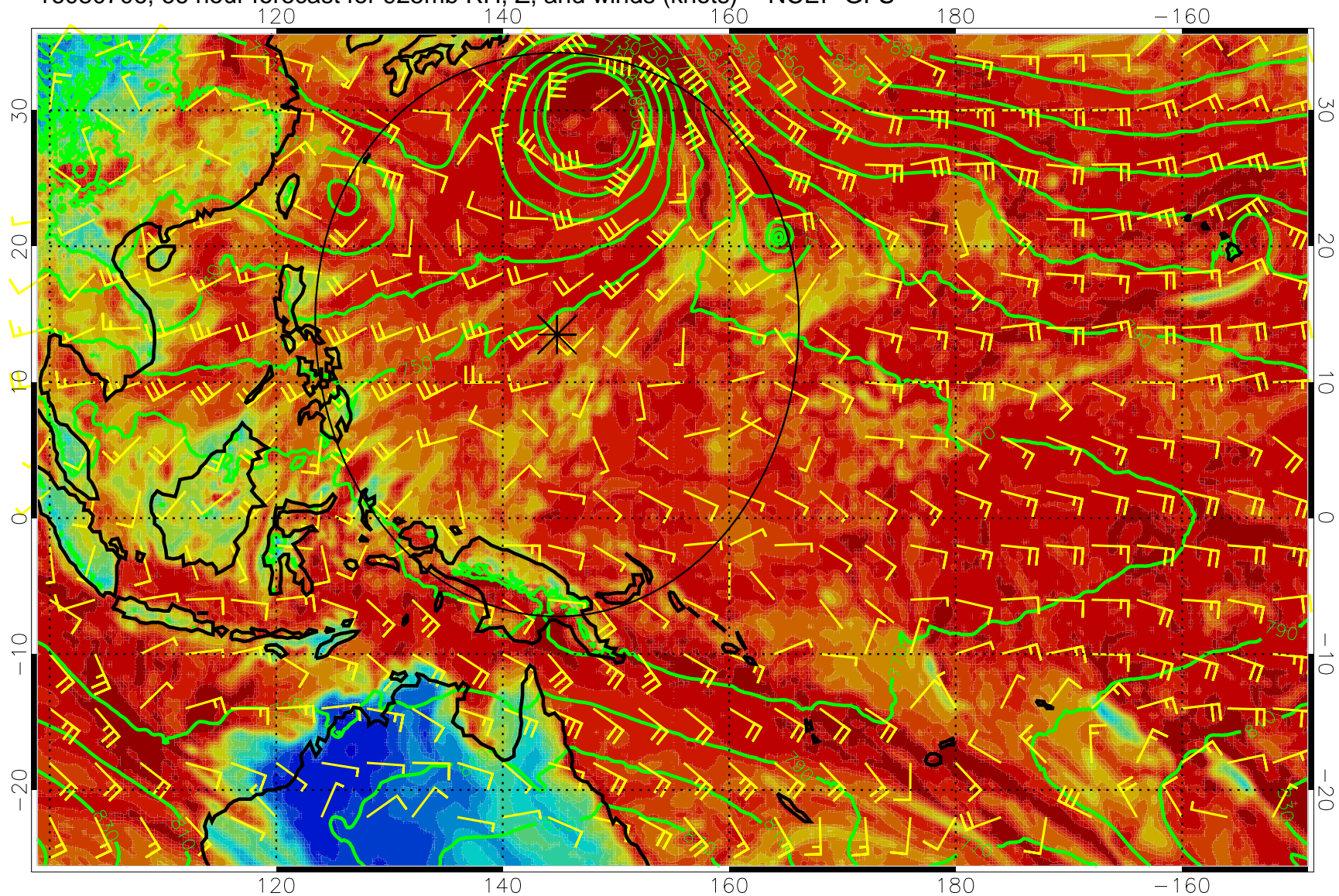
16080618, 54 hour forecast for 925mb RH, Z, and winds (knots) -- NCEP GFS



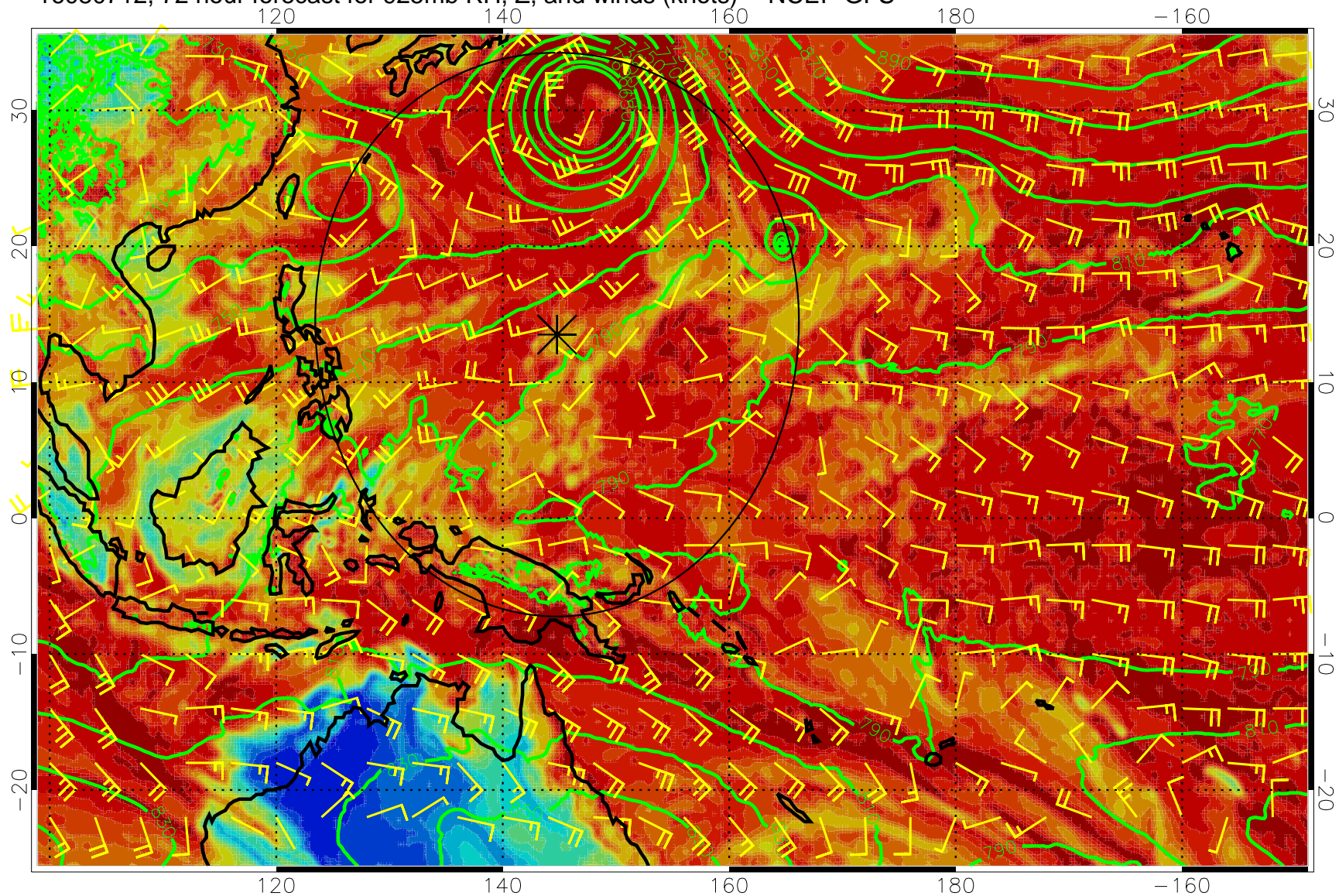
16080700, 60 hour forecast for 925mb RH, Z, and winds (knots) -- NCEP GFS



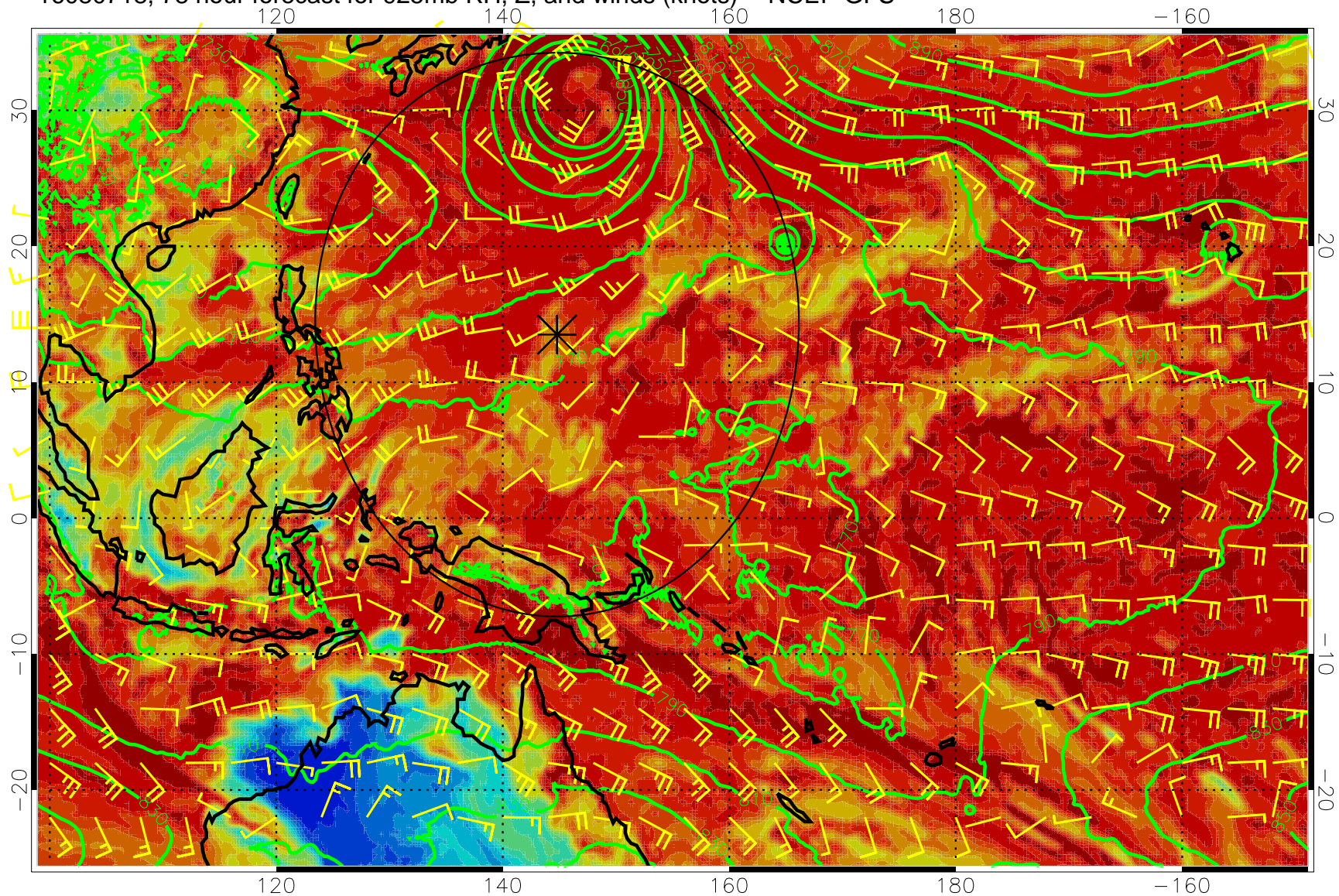
16080706, 66 hour forecast for 925mb RH, Z, and winds (knots) -- NCEP GFS



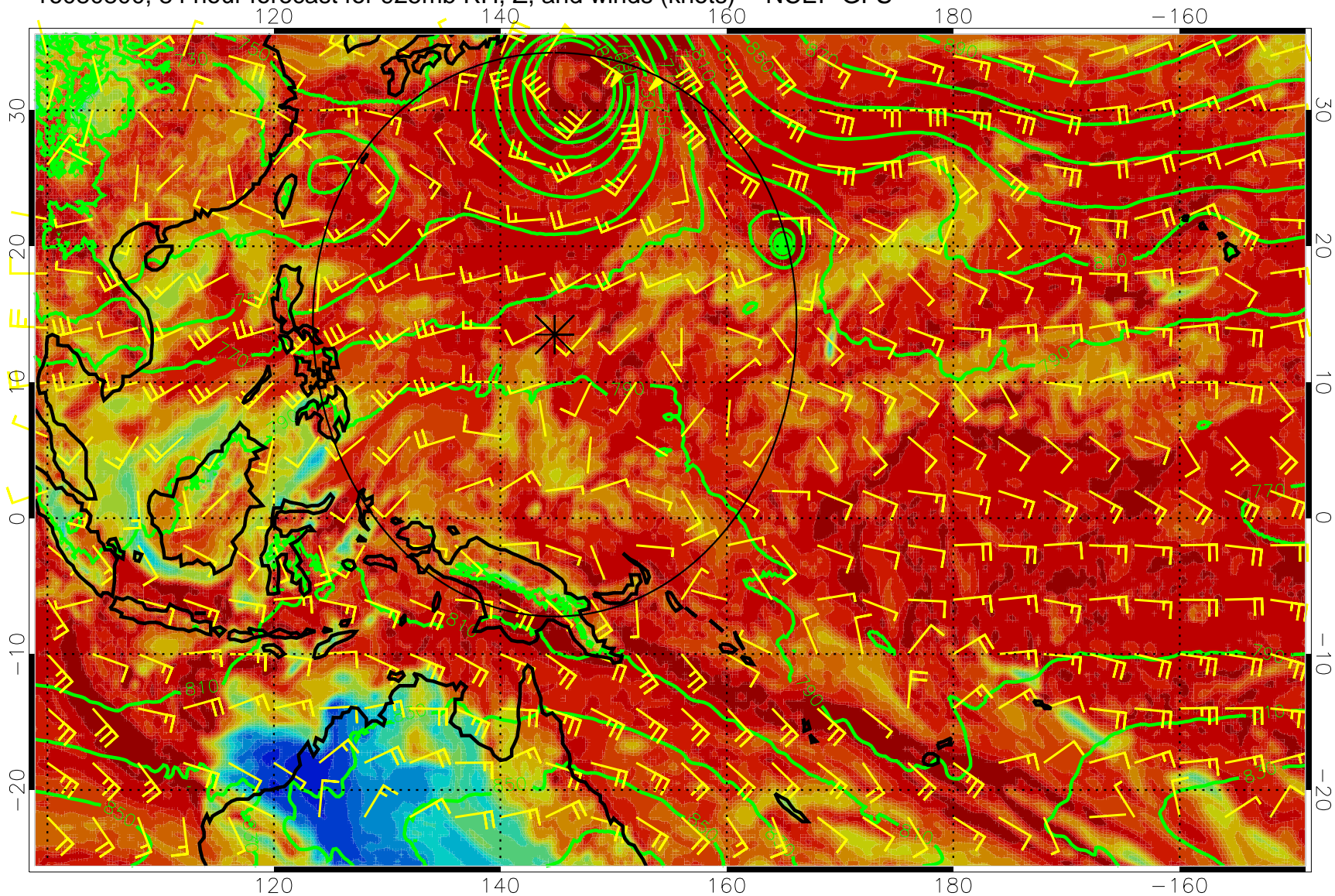
16080712, 72 hour forecast for 925mb RH, Z, and winds (knots) -- NCEP GFS



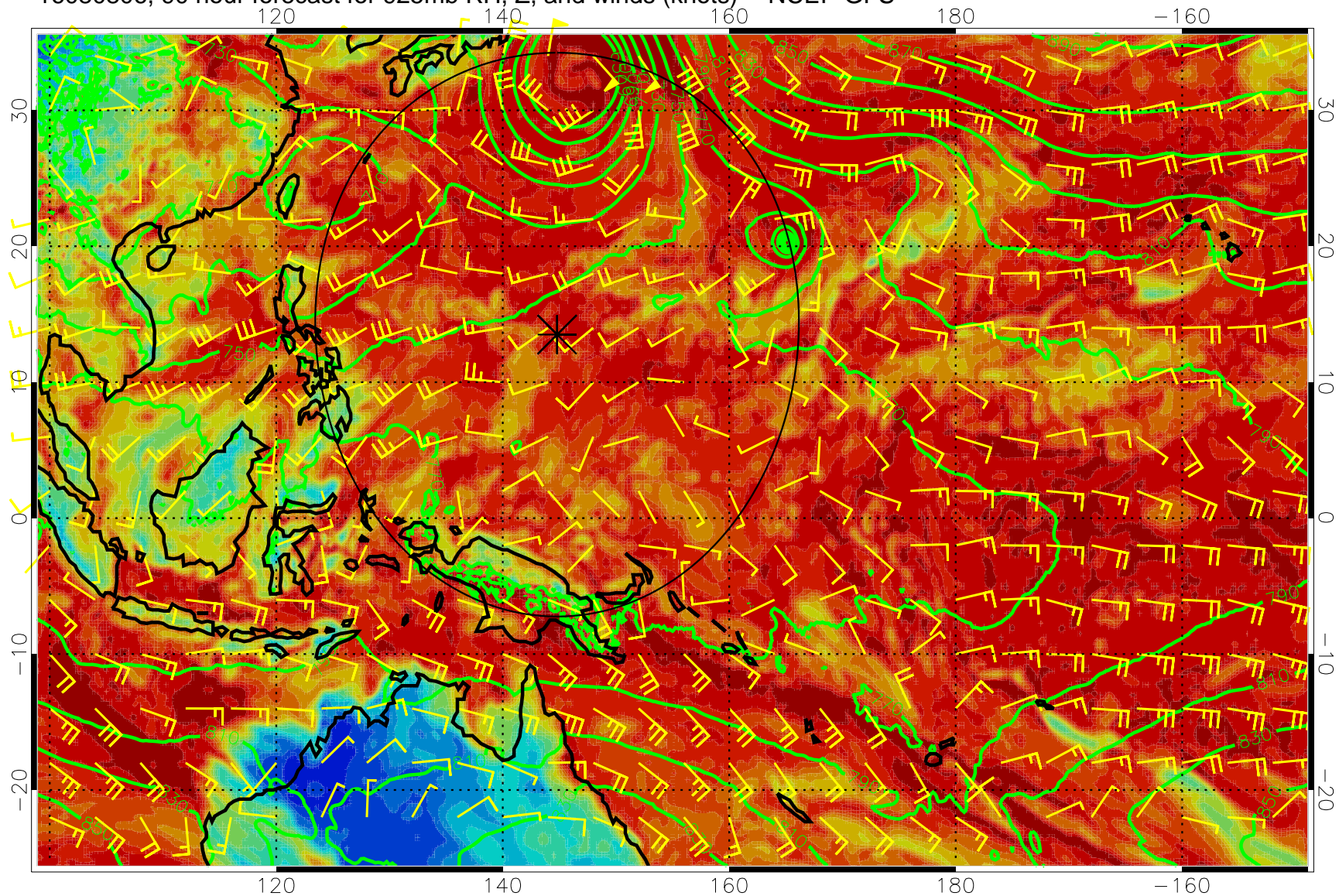
16080718, 78 hour forecast for 925mb RH, Z, and winds (knots) -- NCEP GFS



16080800, 84 hour forecast for 925mb RH, Z, and winds (knots) -- NCEP GFS

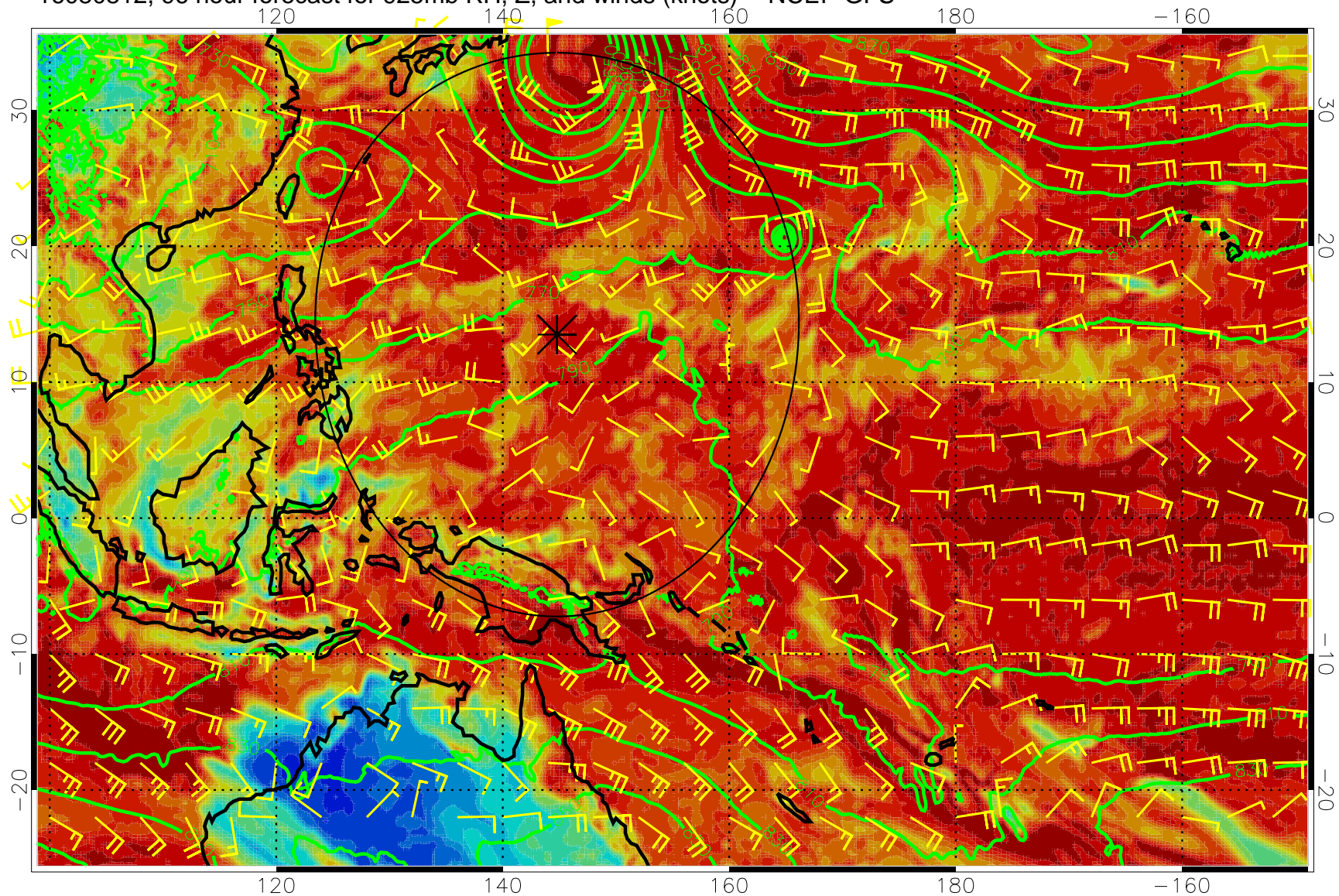


16080806, 90 hour forecast for 925mb RH, Z, and winds (knots) -- NCEP GFS

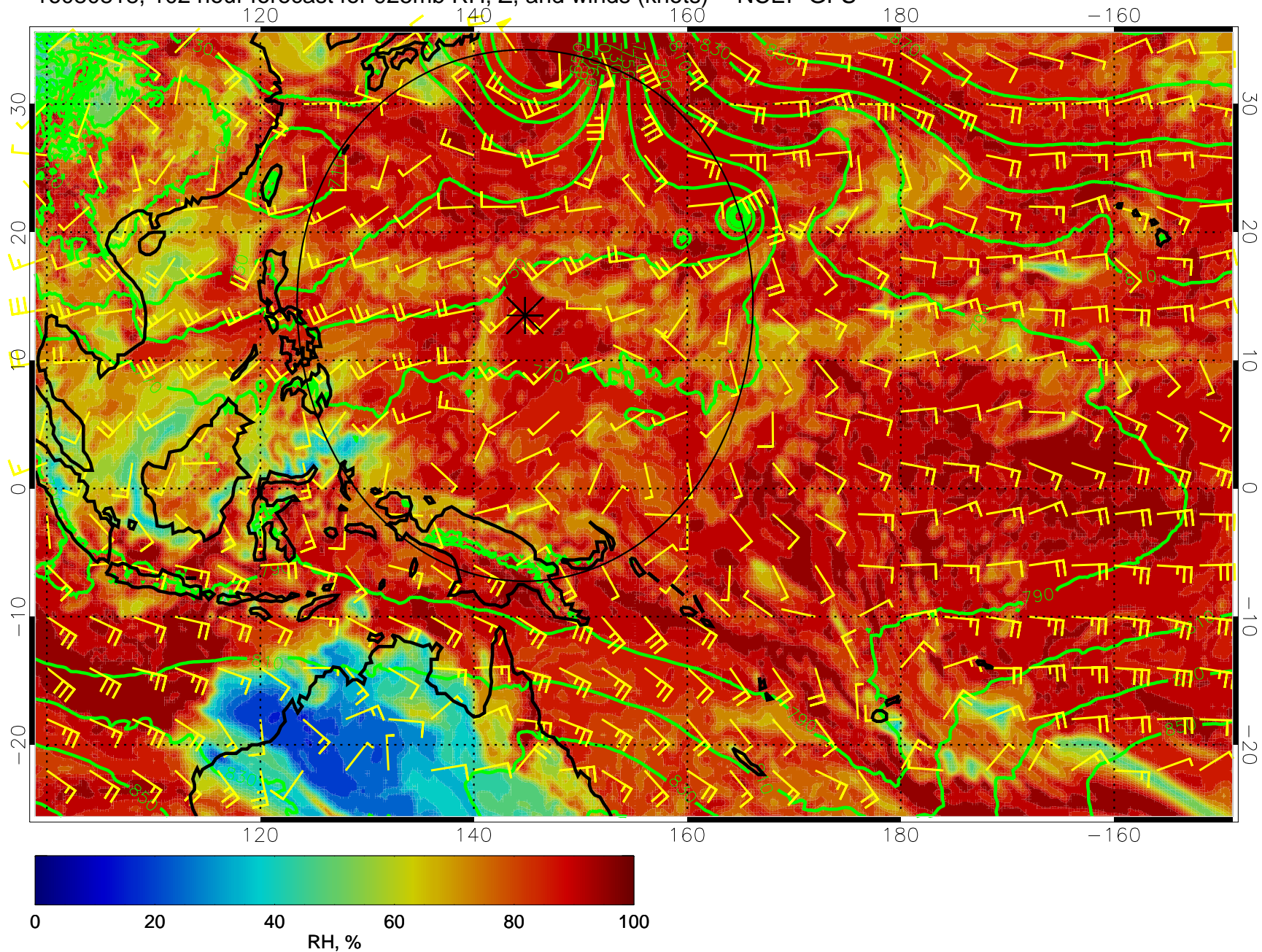


0 20 40 60 80 100
RH, %

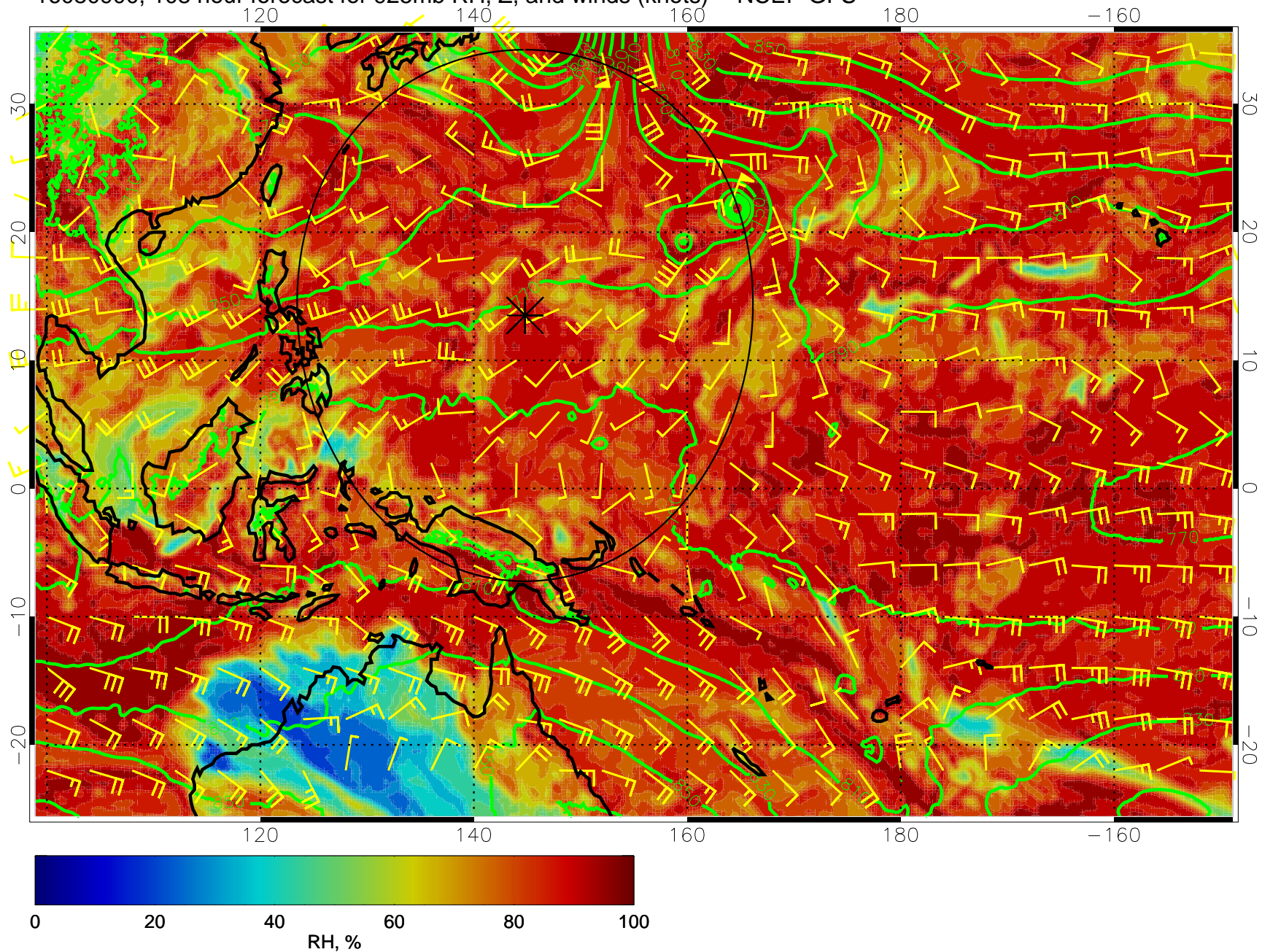
16080812, 96 hour forecast for 925mb RH, Z, and winds (knots) -- NCEP GFS



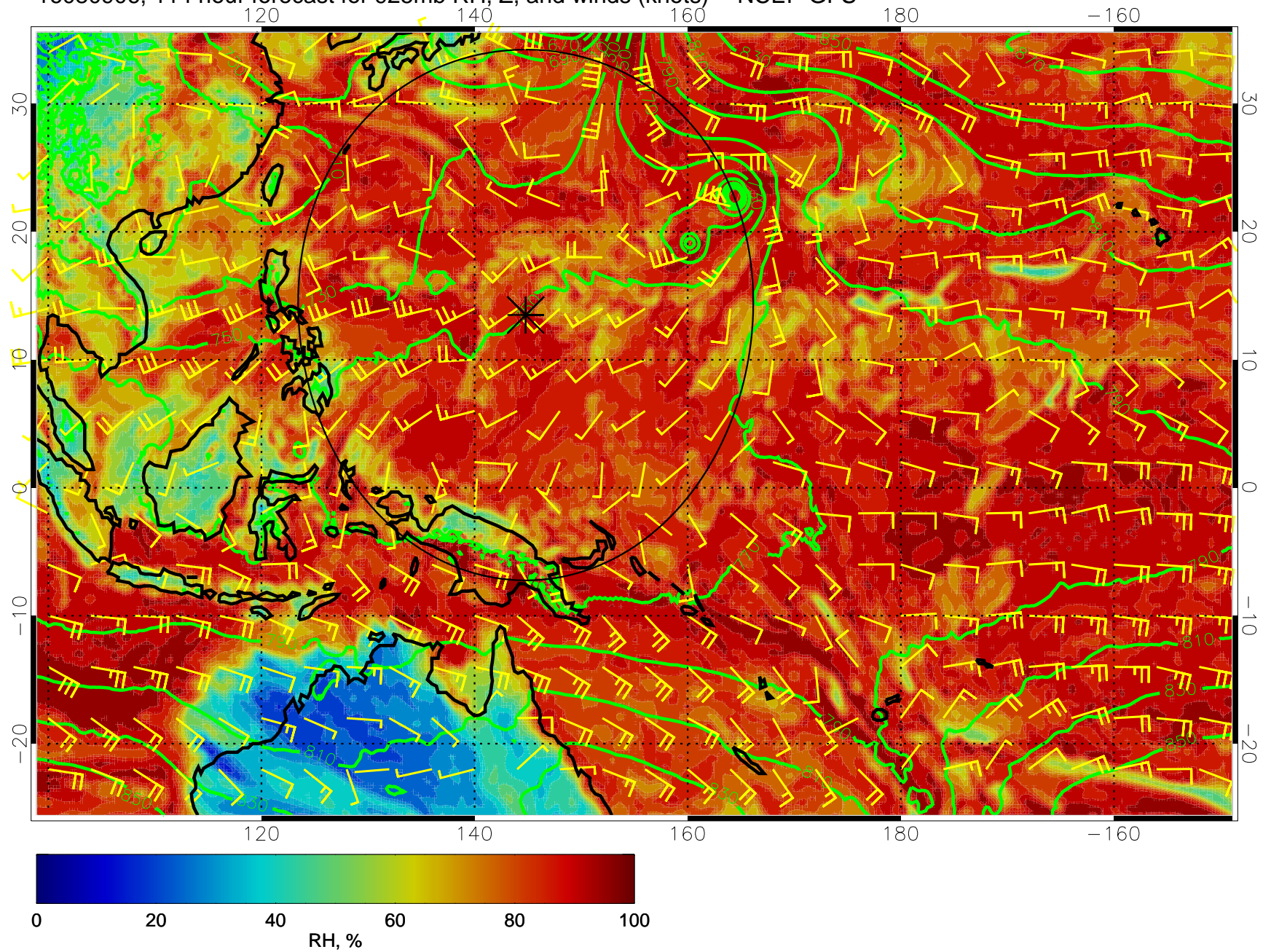
16080818, 102 hour forecast for 925mb RH, Z, and winds (knots) -- NCEP GFS



16080900, 108 hour forecast for 925mb RH, Z, and winds (knots) -- NCEP GFS



16080906, 114 hour forecast for 925mb RH, Z, and winds (knots) -- NCEP GFS



16080912, 120 hour forecast for 925mb RH, Z, and winds (knots) -- NCEP GFS

