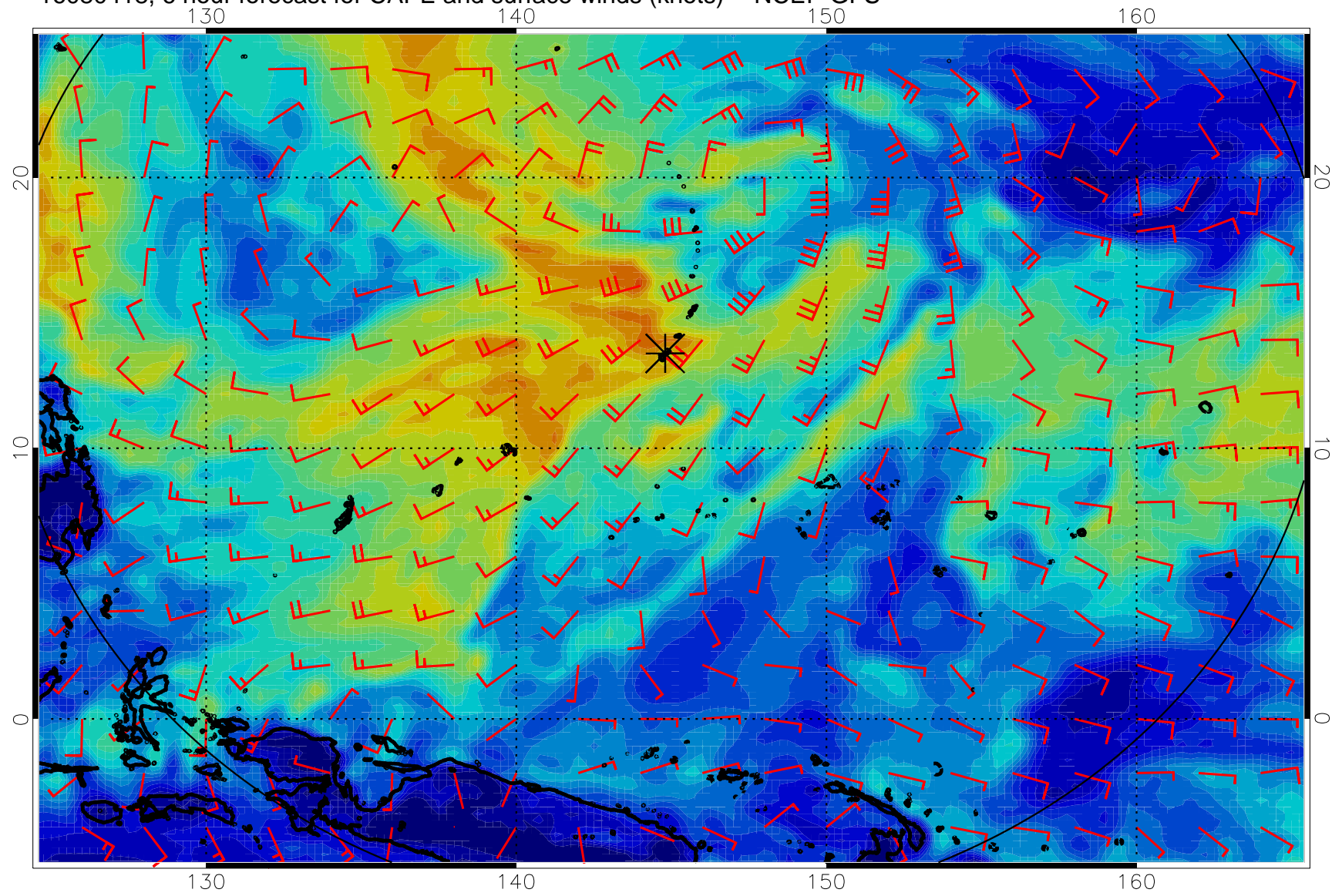
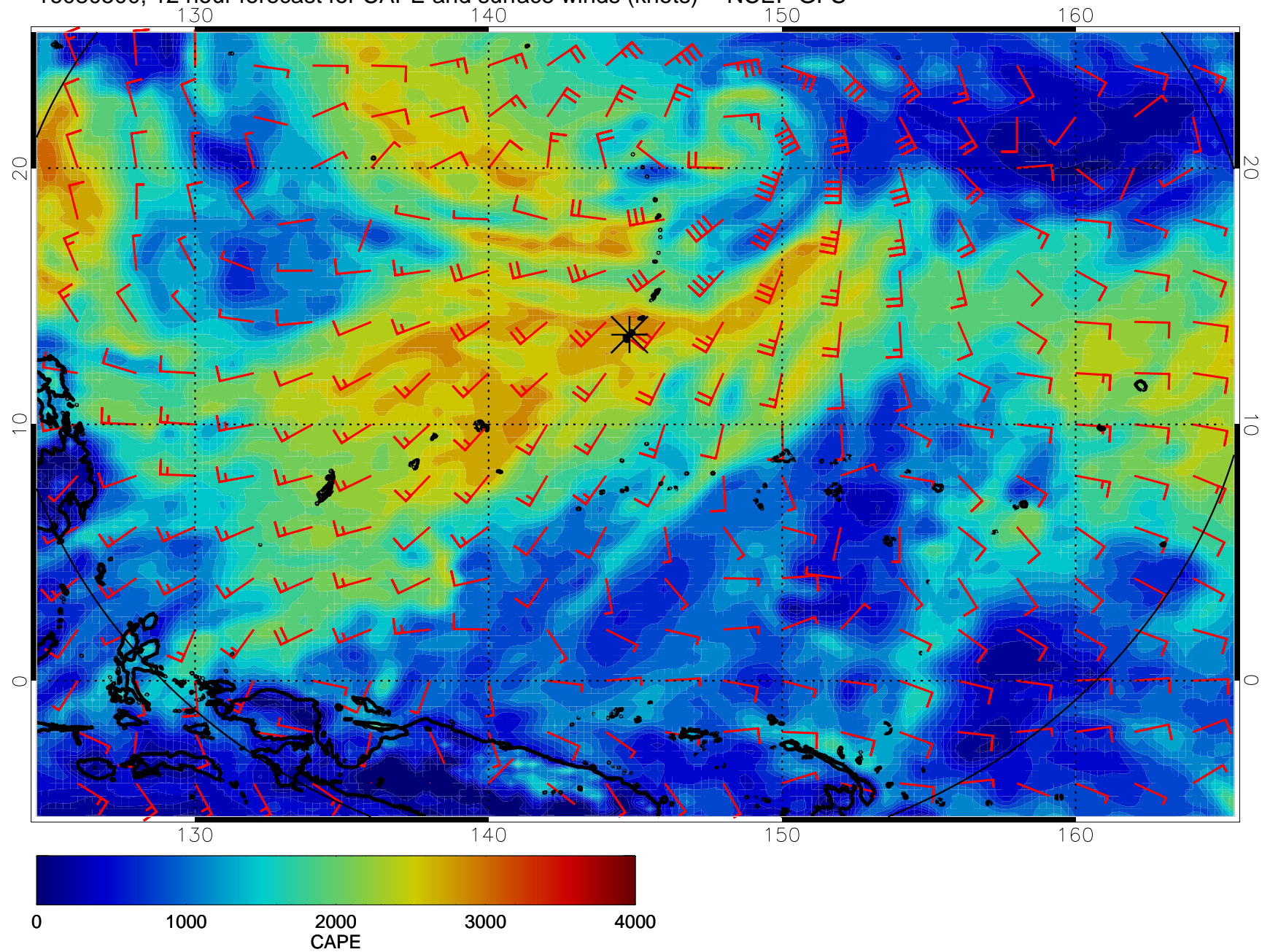


16080418, 6 hour forecast for CAPE and surface winds (knots) -- NCEP GFS

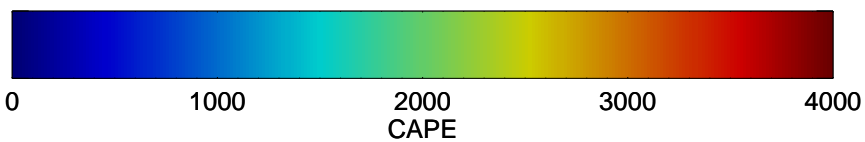
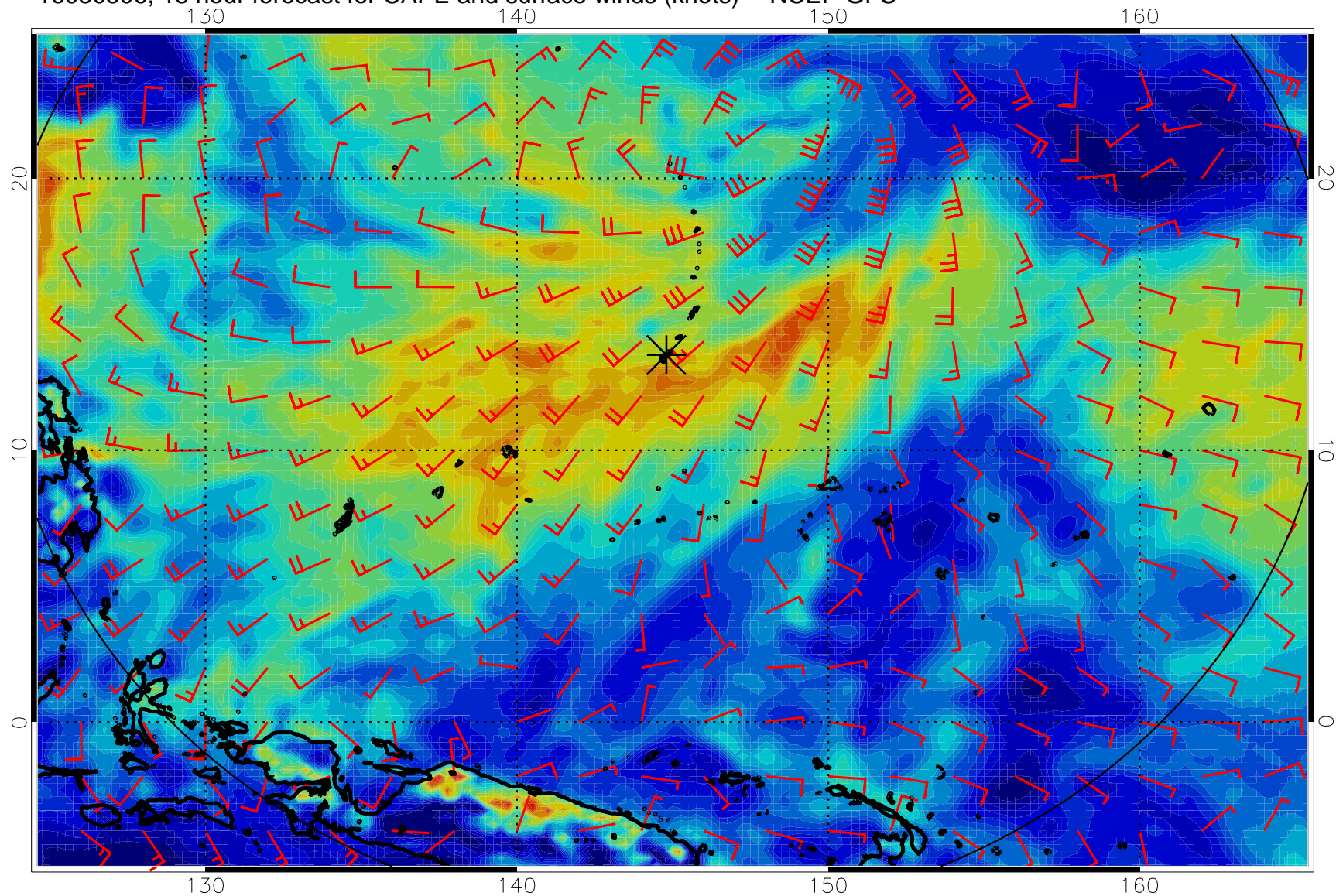


16080500, 12 hour forecast for CAPE and surface winds (knots) -- NCEP GFS

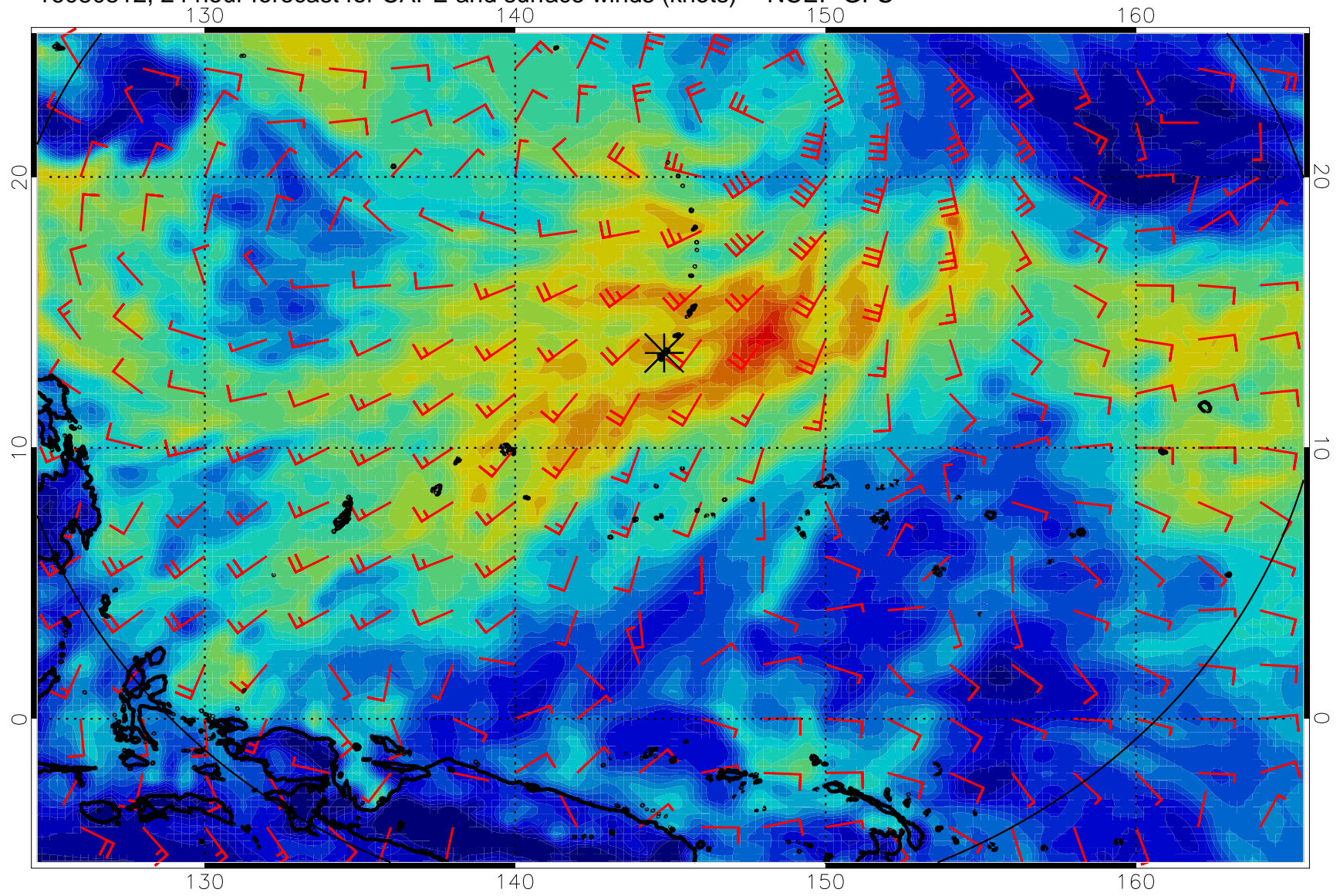




16080506, 18 hour forecast for CAPE and surface winds (knots) -- NCEP GFS

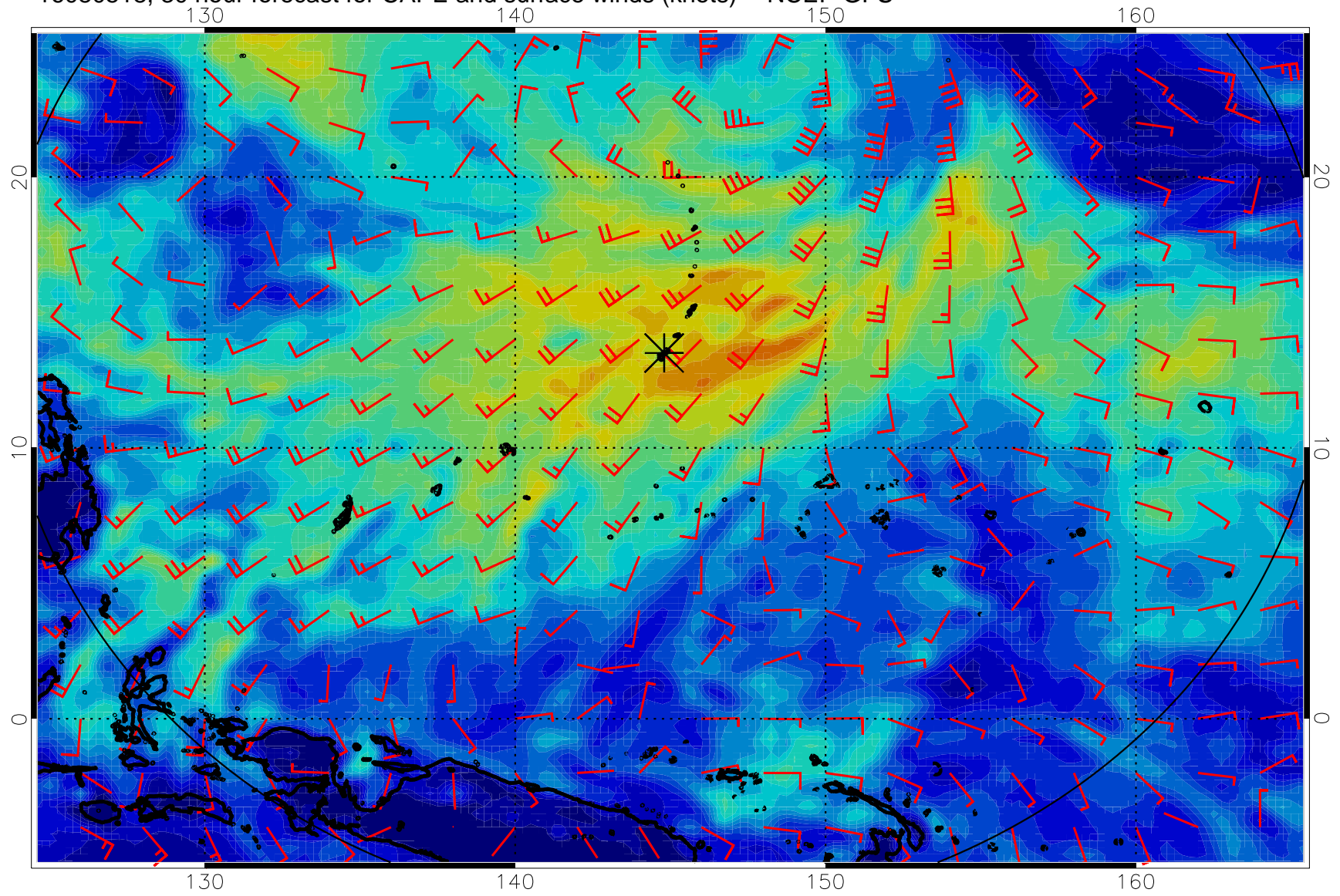


16080512, 24 hour forecast for CAPE and surface winds (knots) -- NCEP GFS

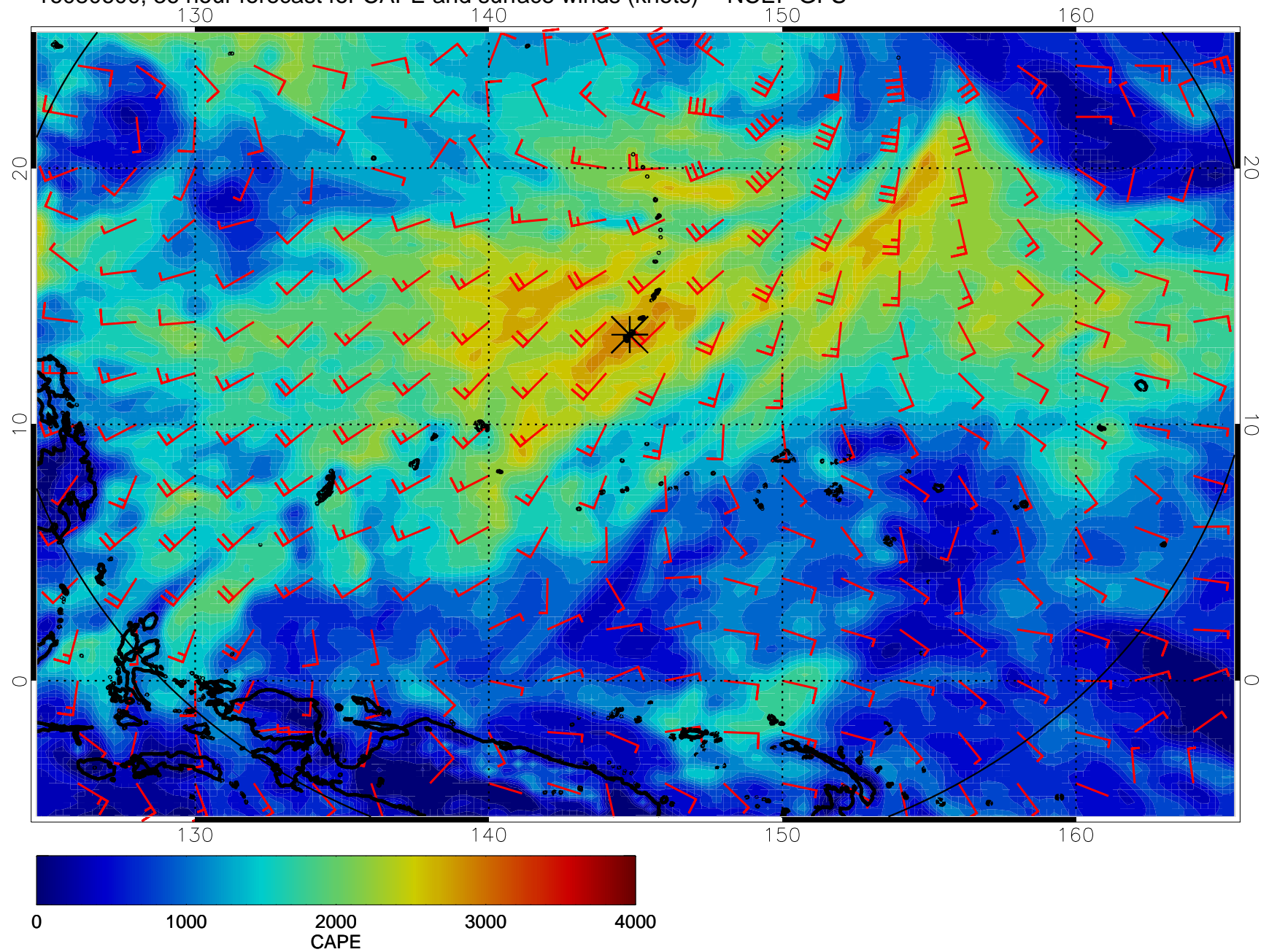




16080518, 30 hour forecast for CAPE and surface winds (knots) -- NCEP GFS

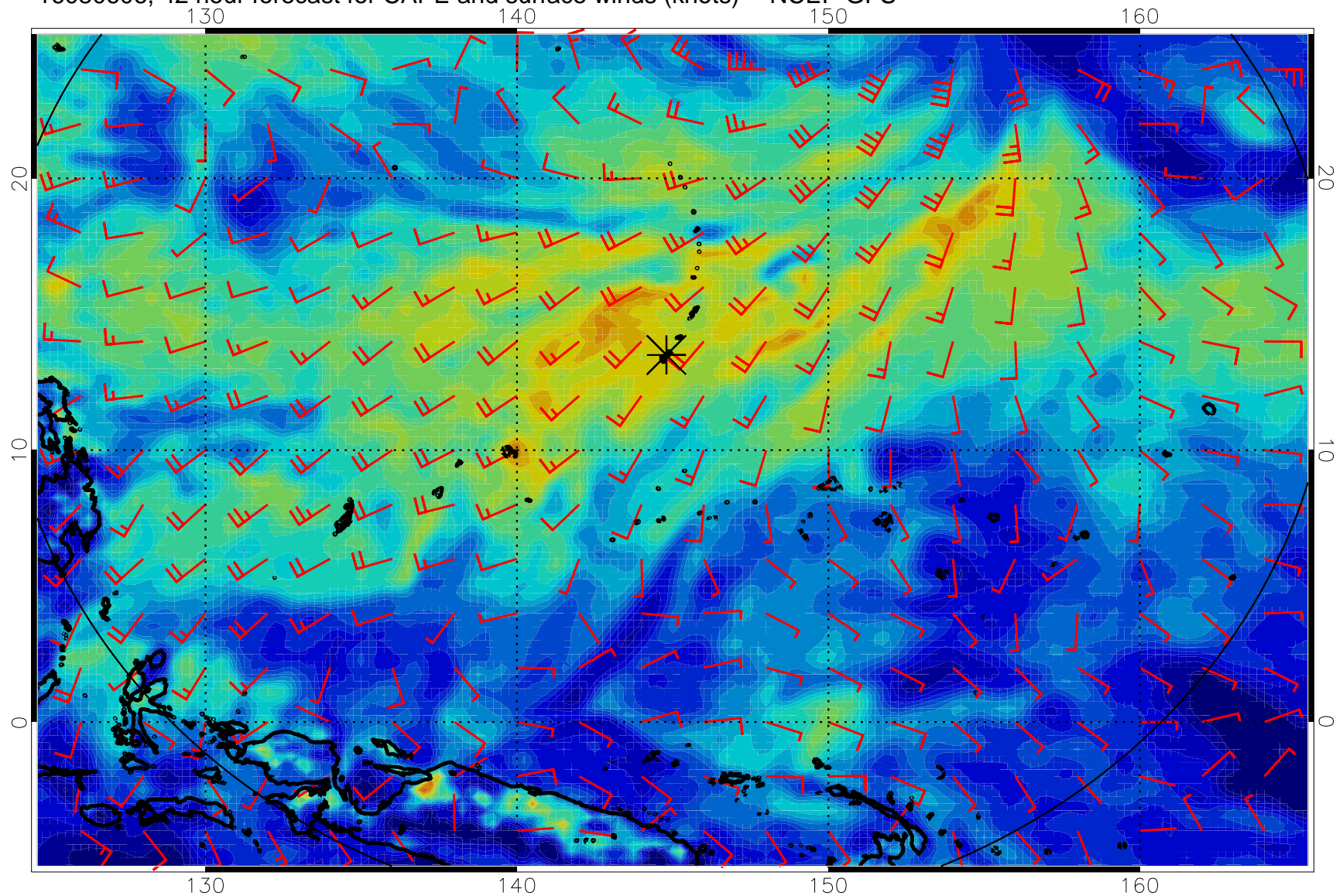


16080600, 36 hour forecast for CAPE and surface winds (knots) -- NCEP GFS

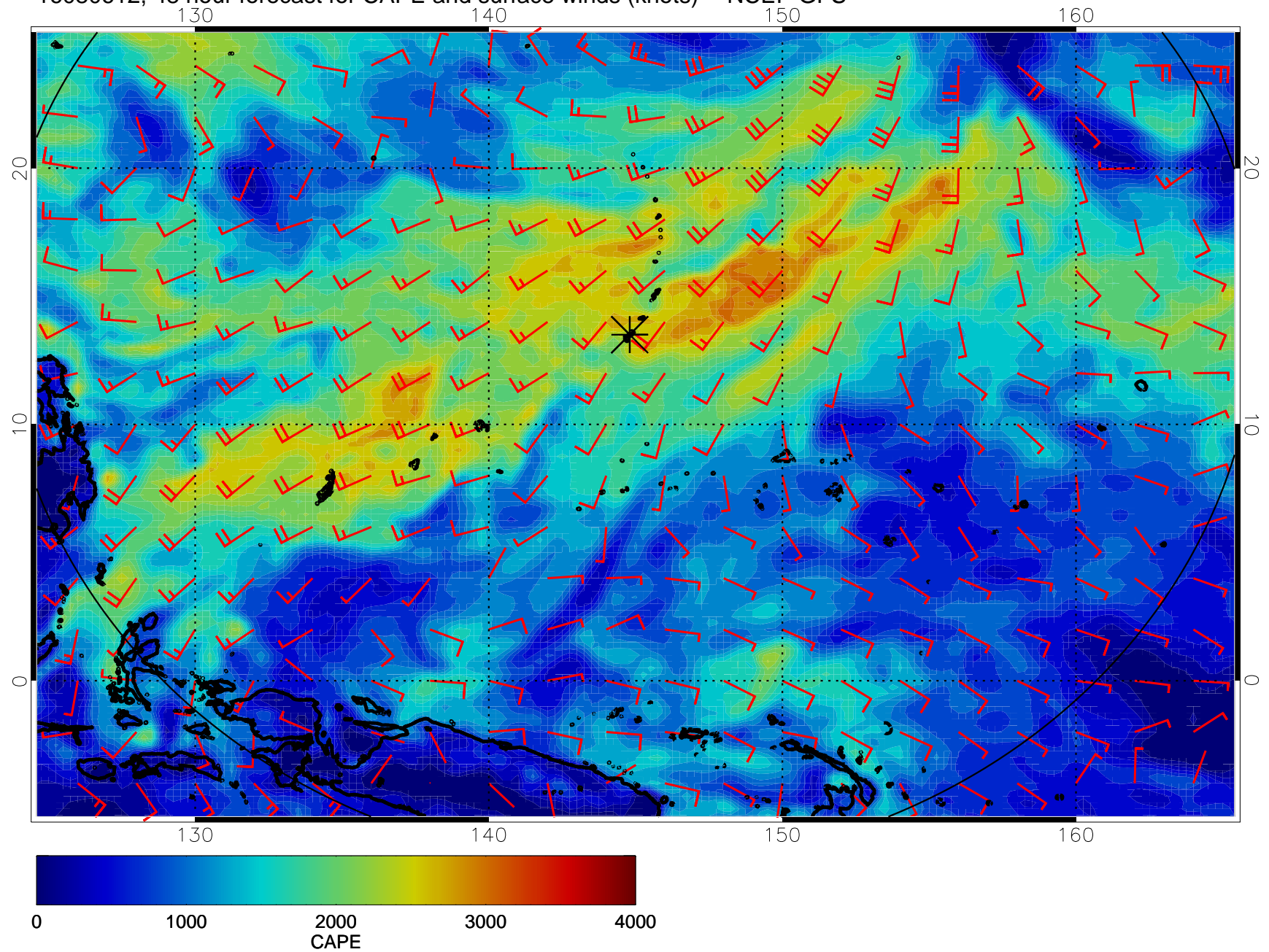




16080606, 42 hour forecast for CAPE and surface winds (knots) -- NCEP GFS

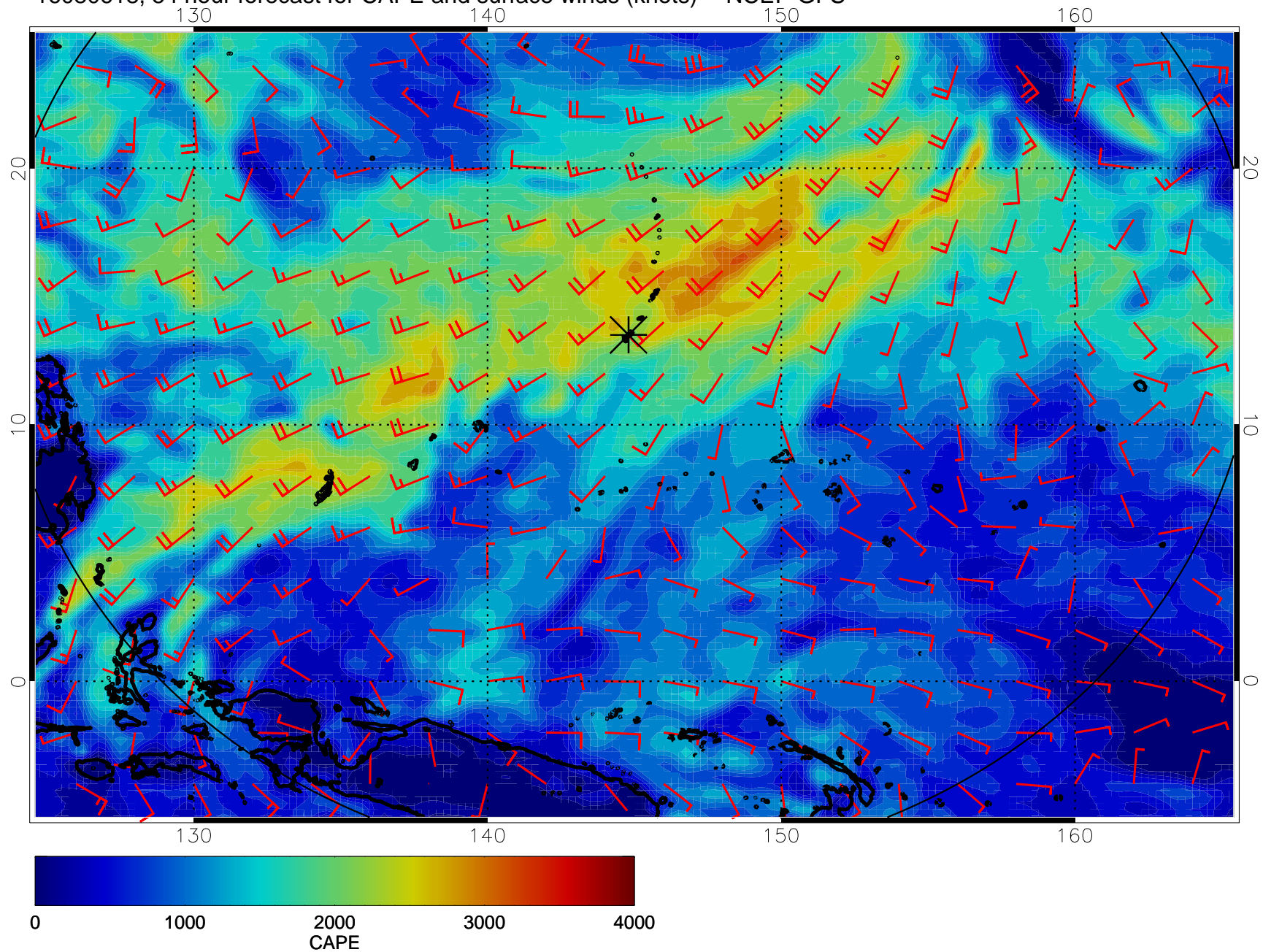


16080612, 48 hour forecast for CAPE and surface winds (knots) -- NCEP GFS

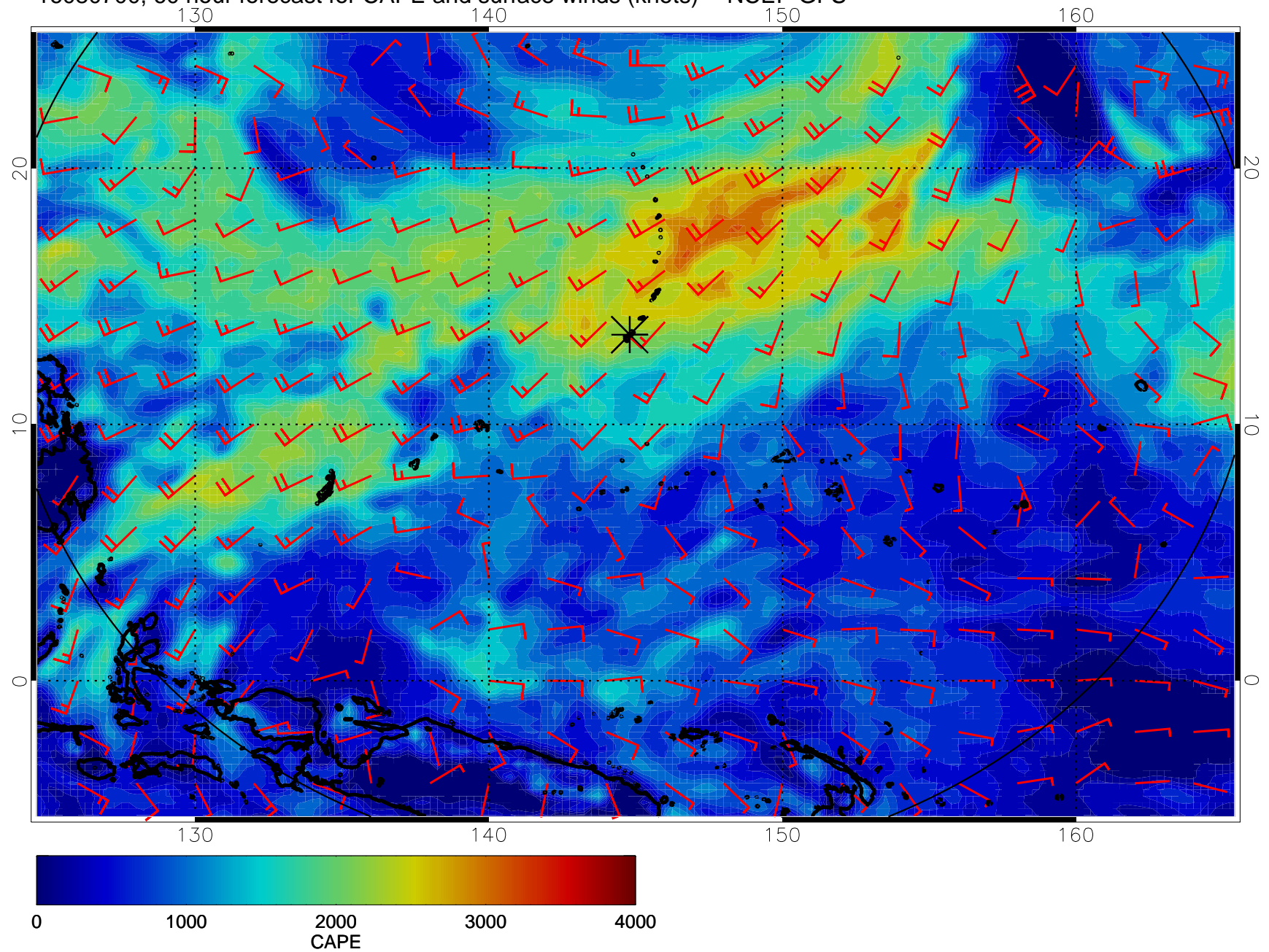




16080618, 54 hour forecast for CAPE and surface winds (knots) -- NCEP GFS

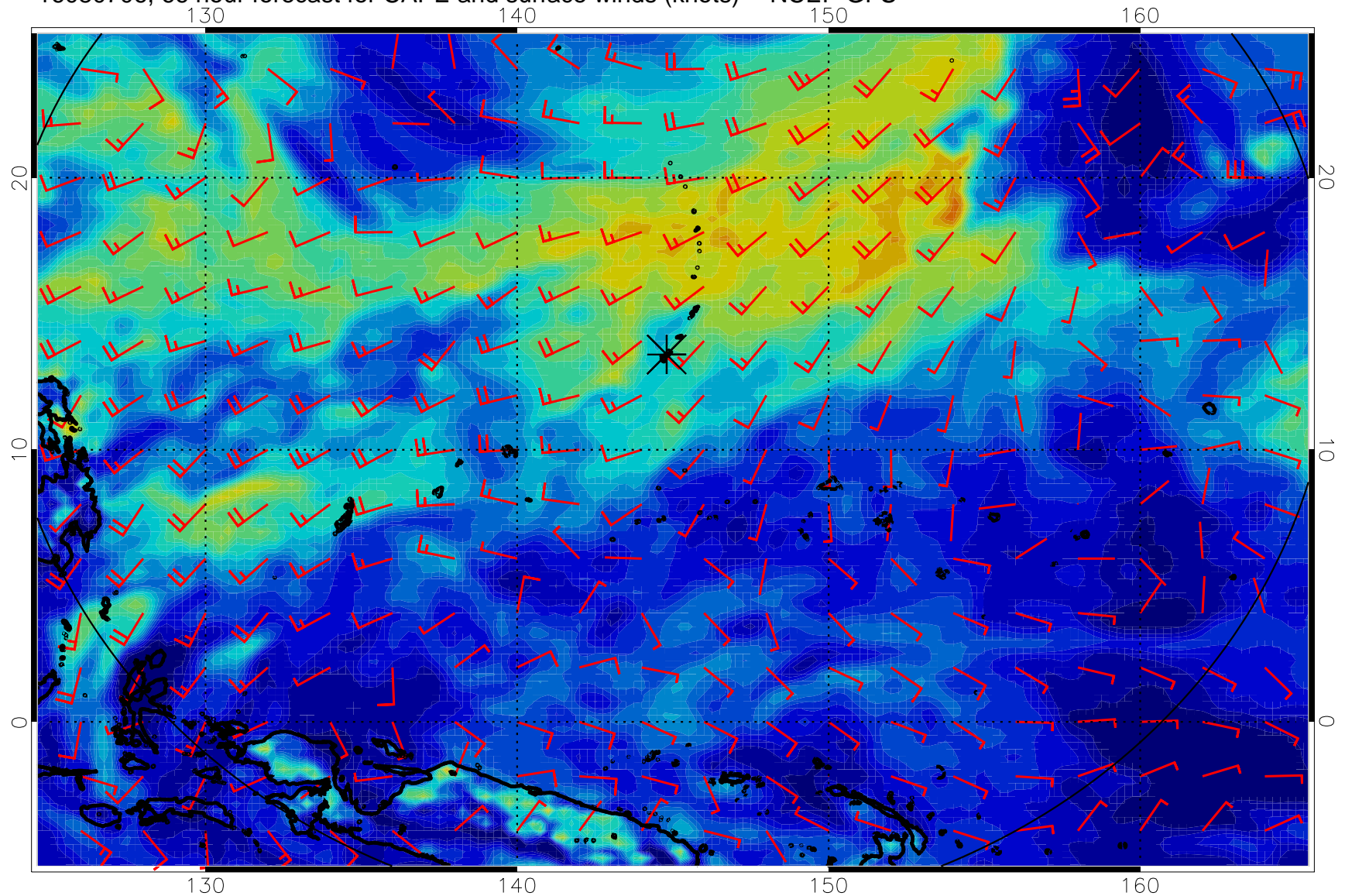


16080700, 60 hour forecast for CAPE and surface winds (knots) -- NCEP GFS

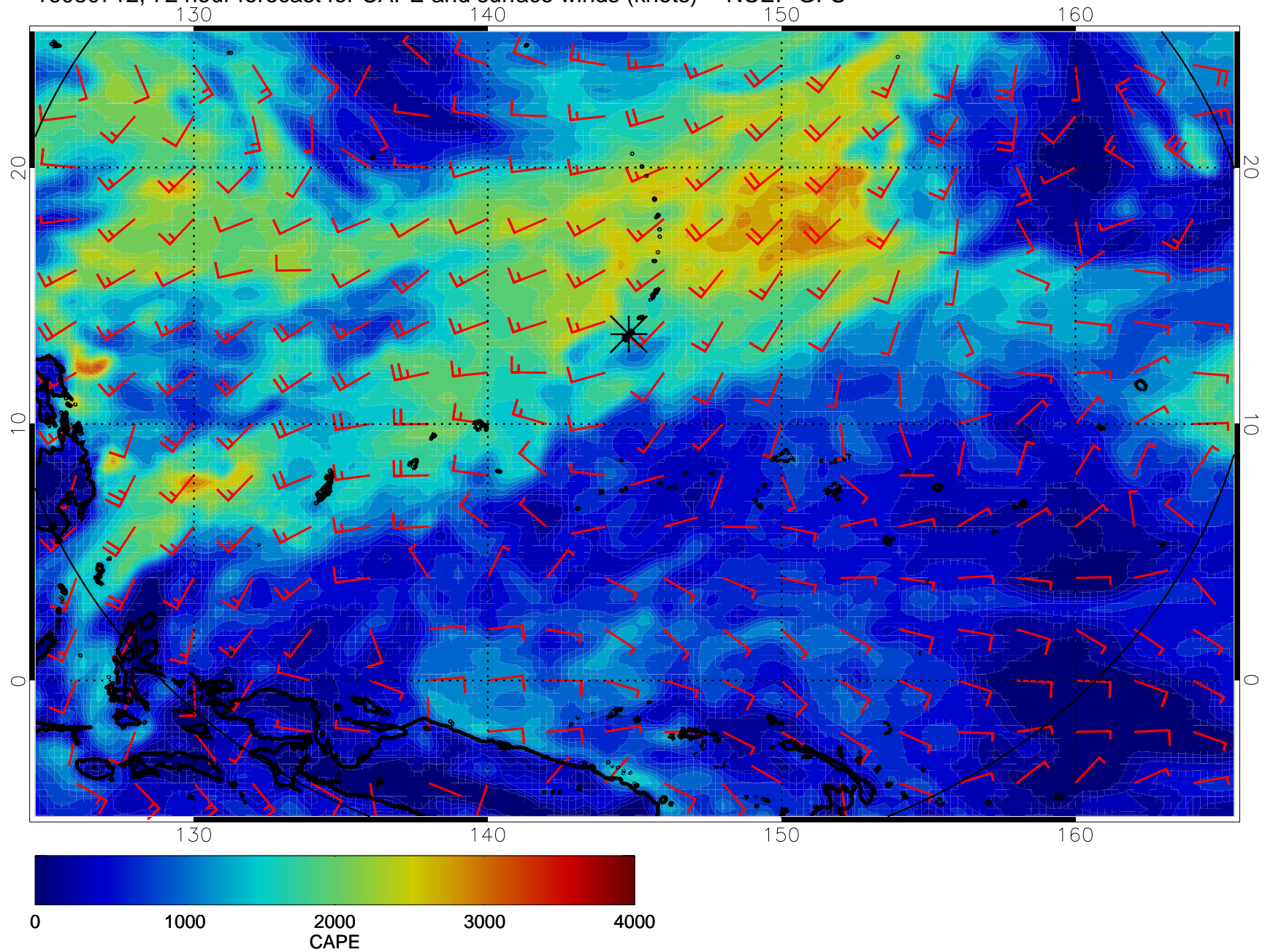




16080706, 66 hour forecast for CAPE and surface winds (knots) -- NCEP GFS

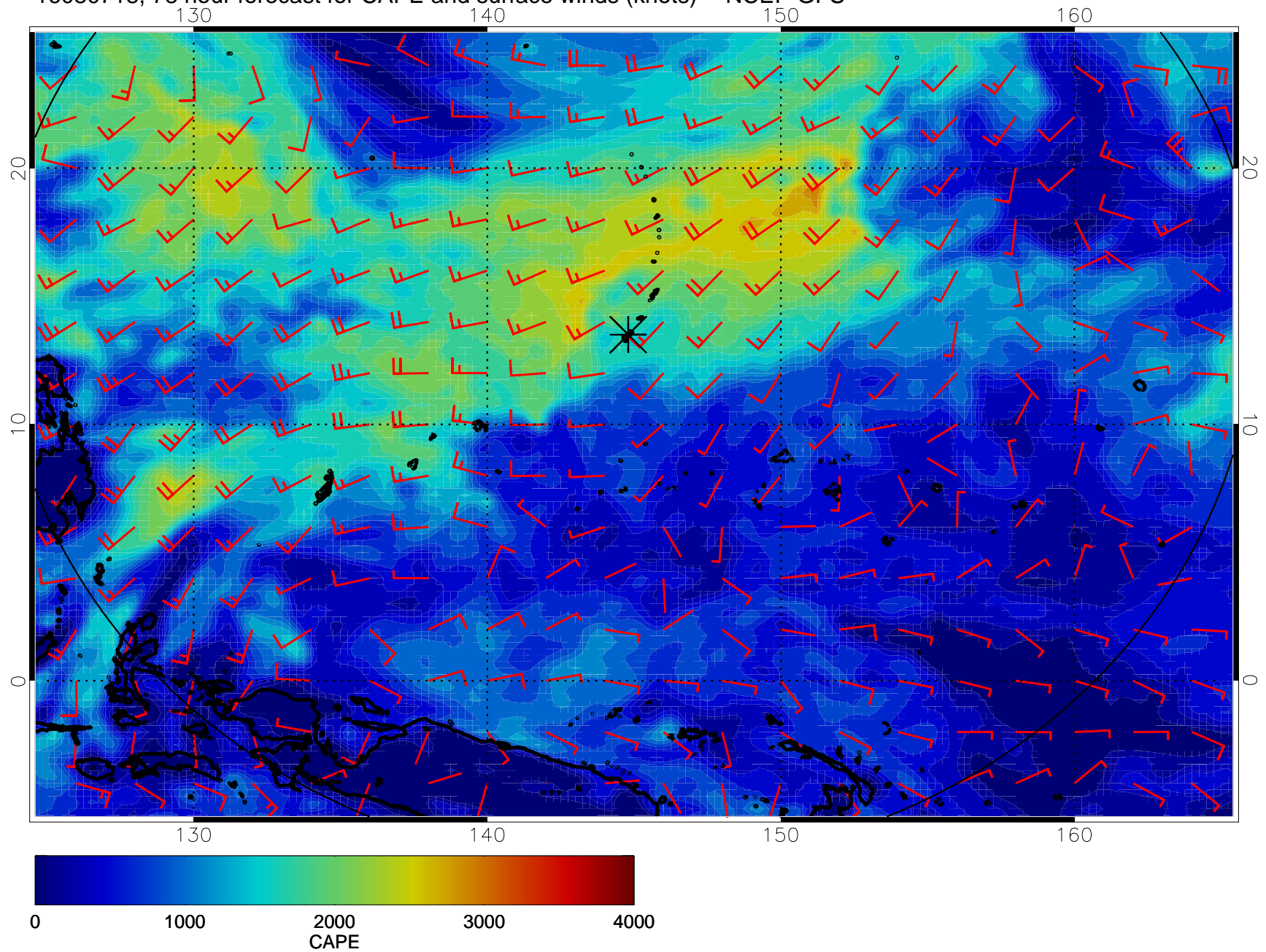


16080712, 72 hour forecast for CAPE and surface winds (knots) -- NCEP GFS

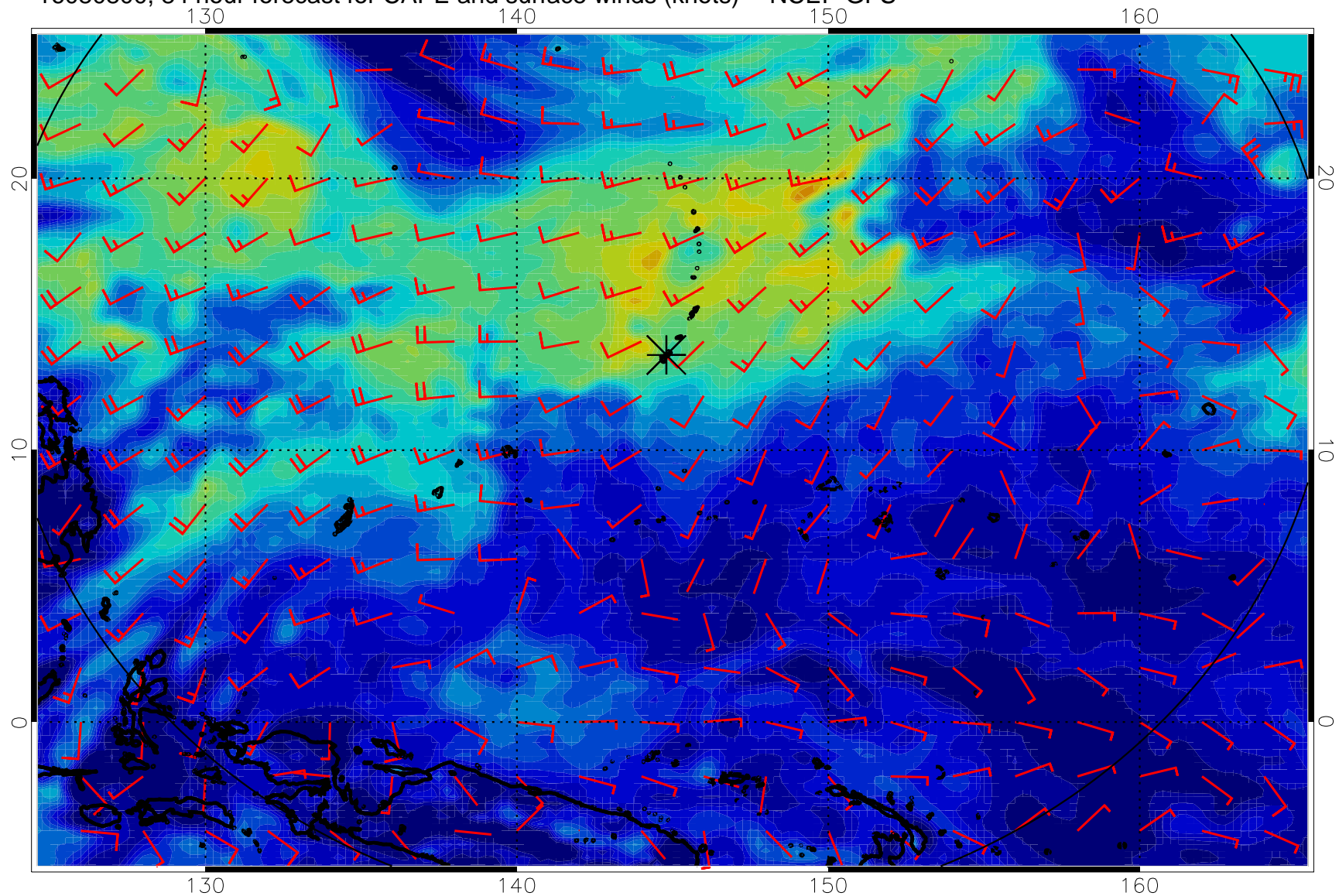




16080718, 78 hour forecast for CAPE and surface winds (knots) -- NCEP GFS

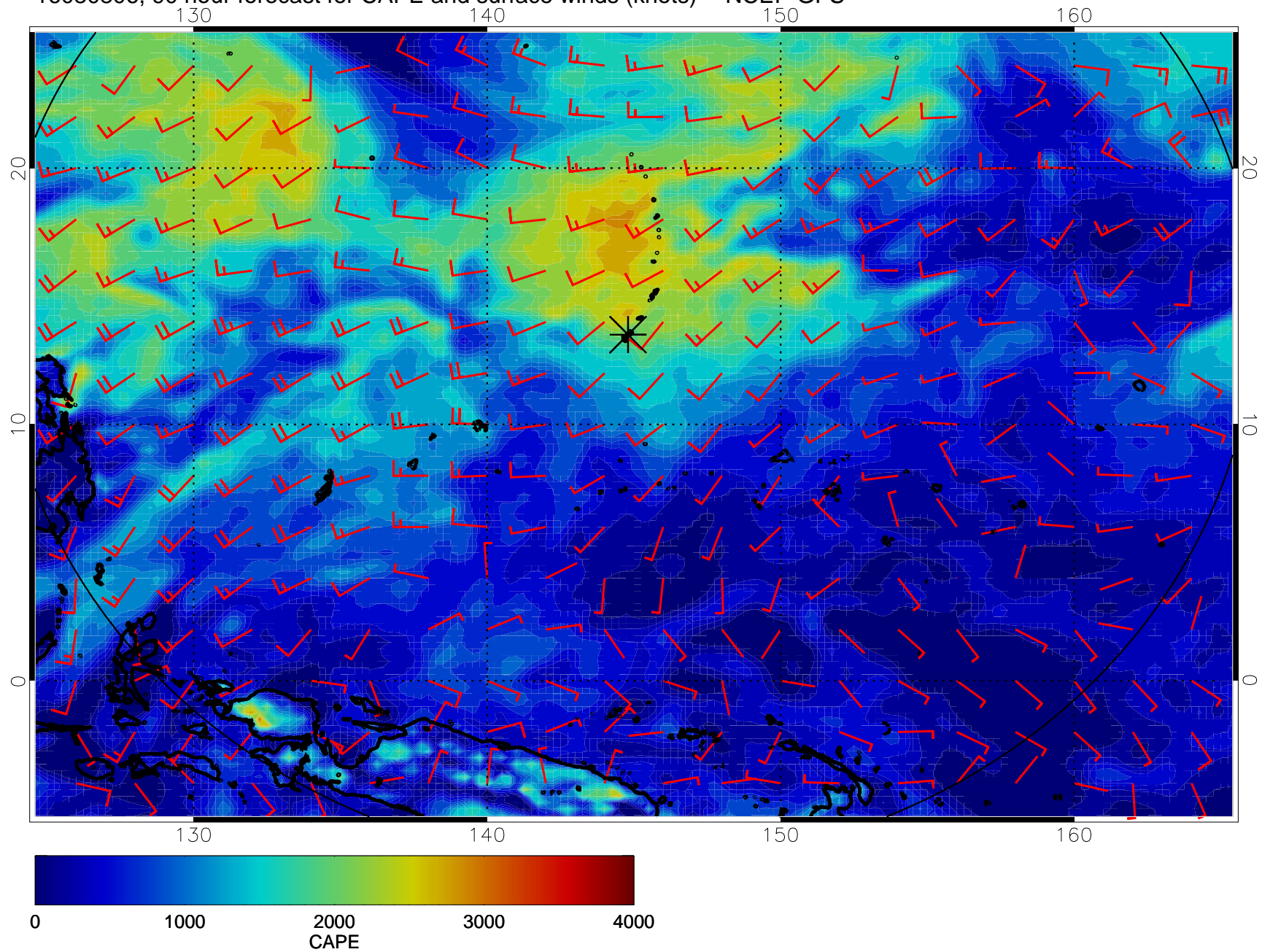


16080800, 84 hour forecast for CAPE and surface winds (knots) -- NCEP GFS

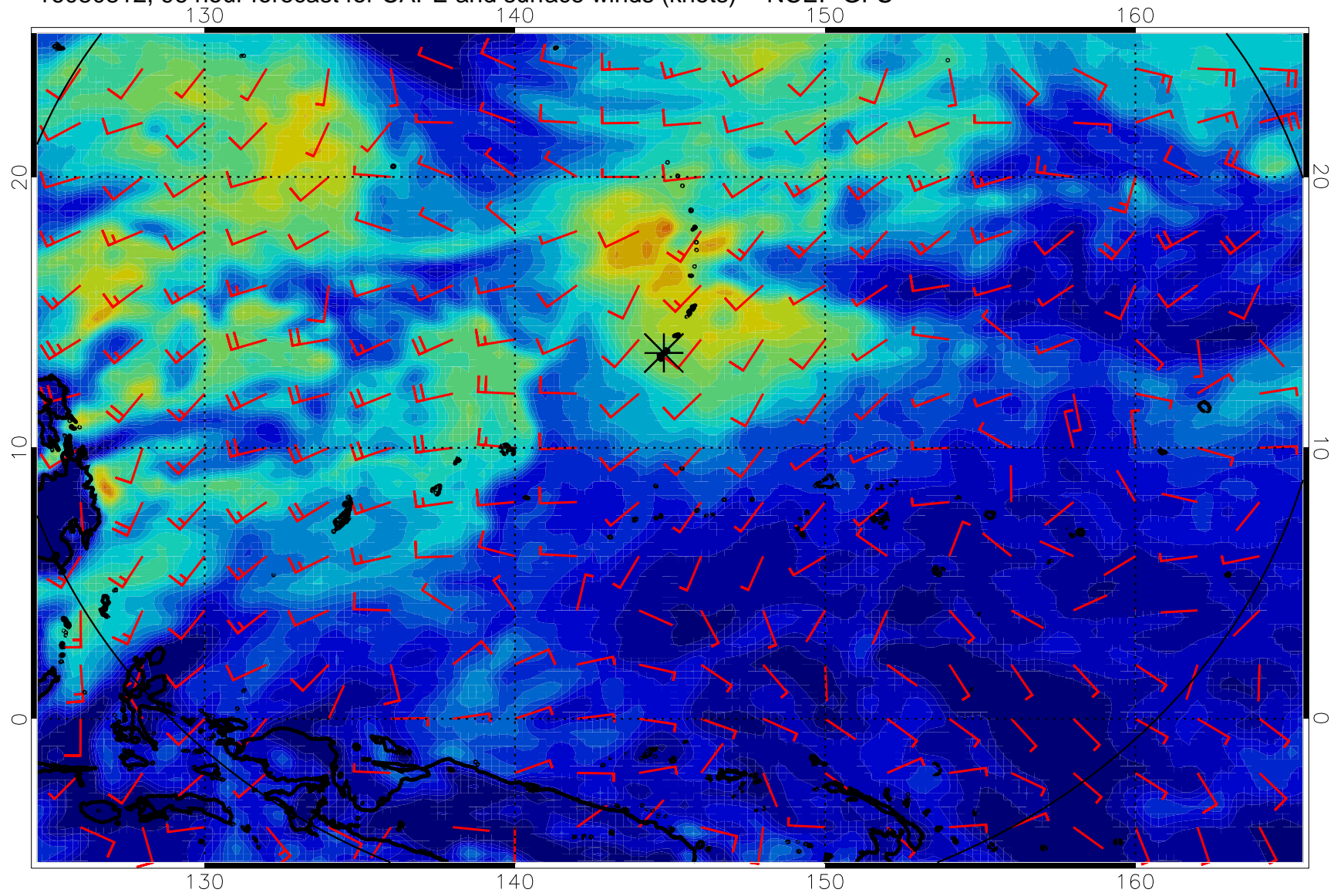




16080806, 90 hour forecast for CAPE and surface winds (knots) -- NCEP GFS

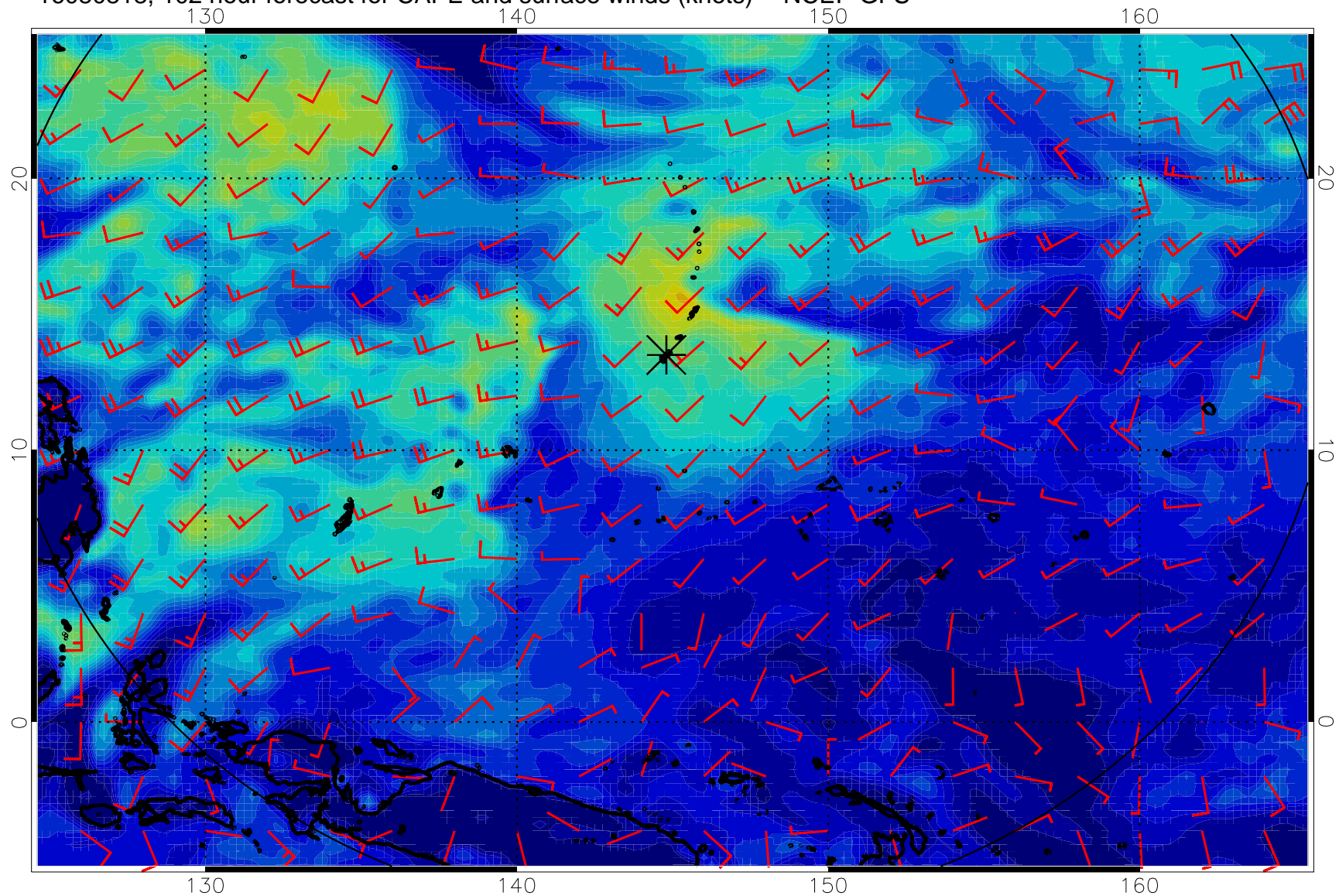


16080812, 96 hour forecast for CAPE and surface winds (knots) -- NCEP GFS

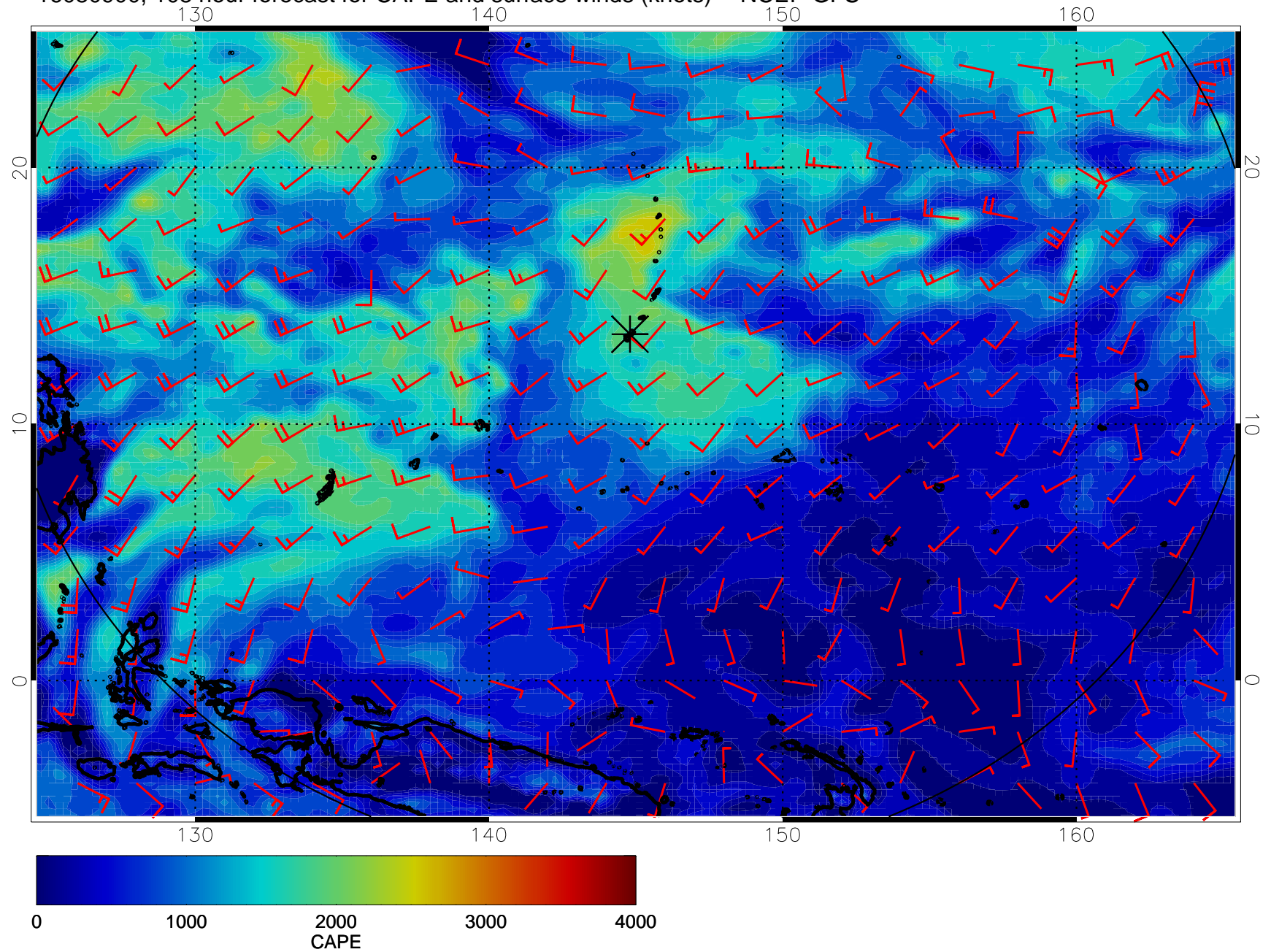




16080818, 102 hour forecast for CAPE and surface winds (knots) -- NCEP GFS

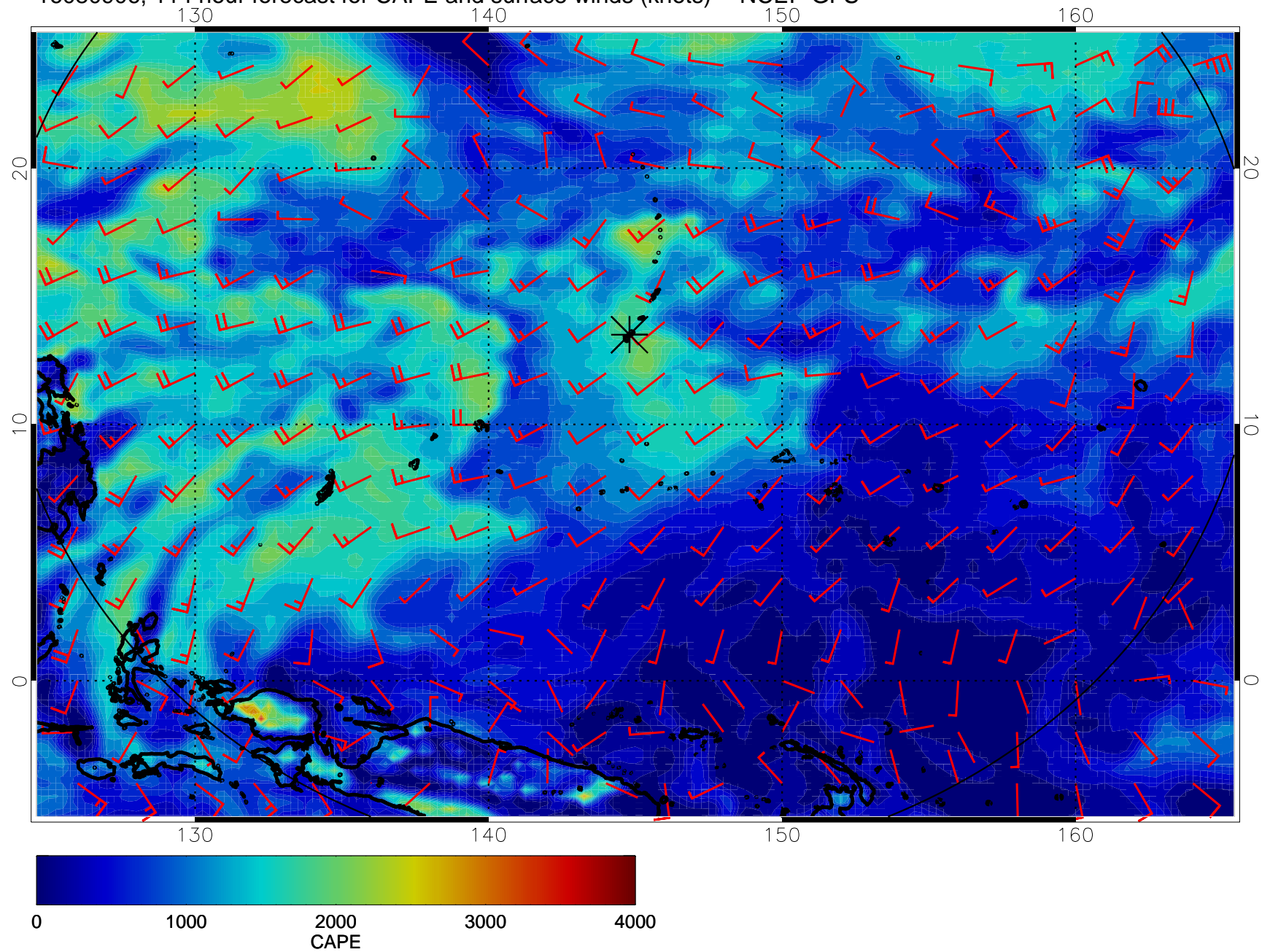


16080900, 108 hour forecast for CAPE and surface winds (knots) -- NCEP GFS





16080906, 114 hour forecast for CAPE and surface winds (knots) -- NCEP GFS



16080912, 120 hour forecast for CAPE and surface winds (knots) -- NCEP GFS

