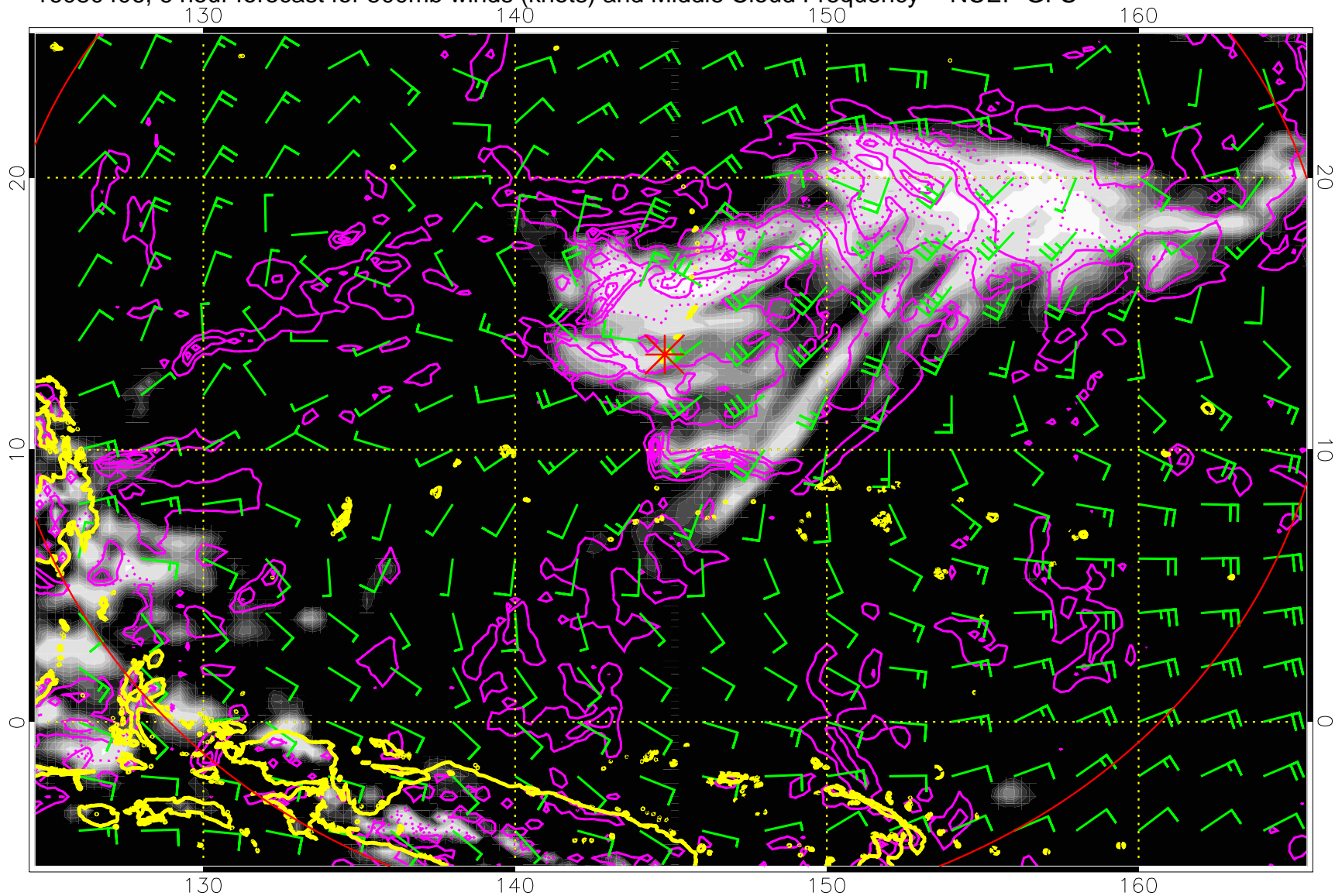
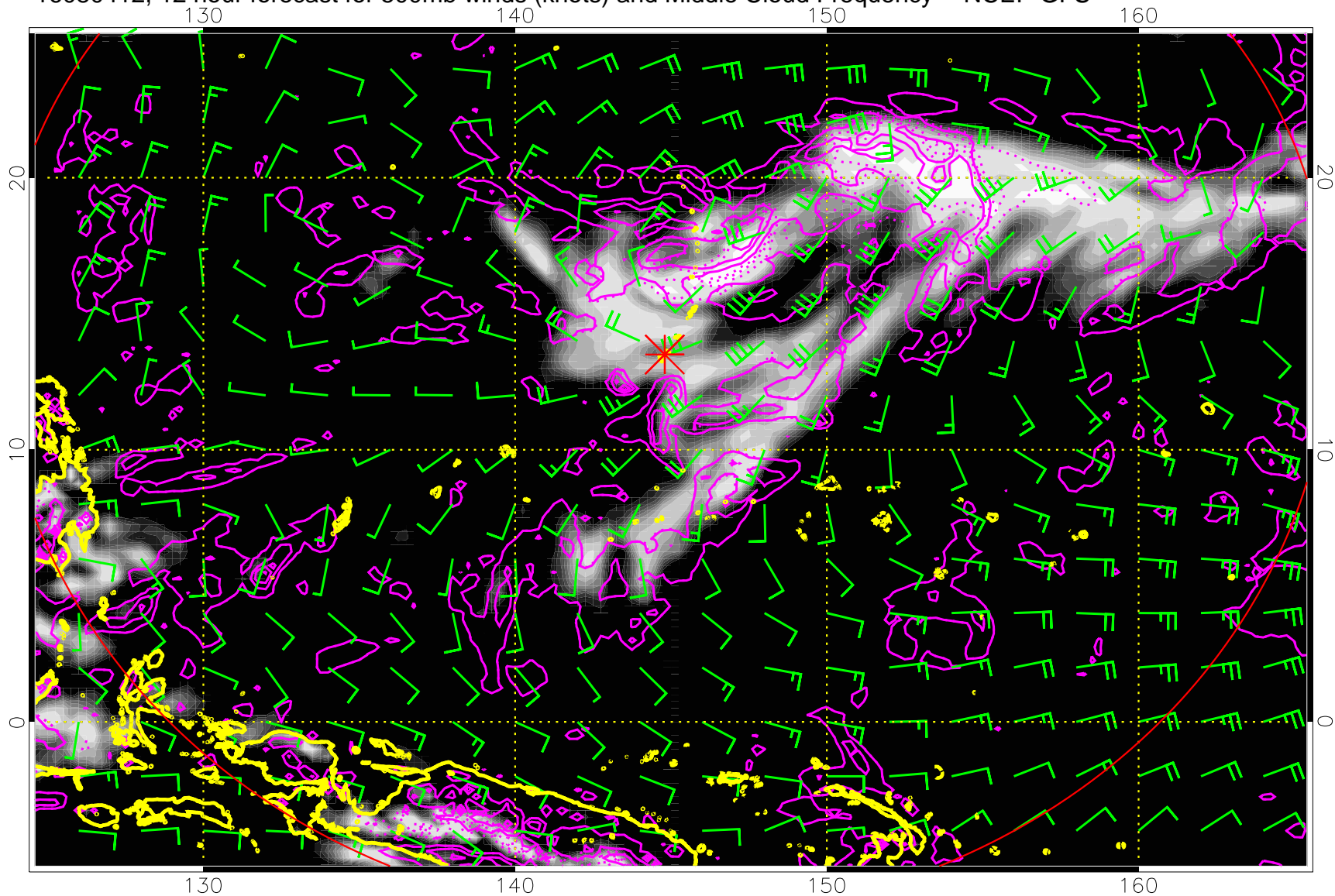


16080406, 6 hour forecast for 500mb winds (knots) and Middle Cloud Frequency -- NCEP GFS



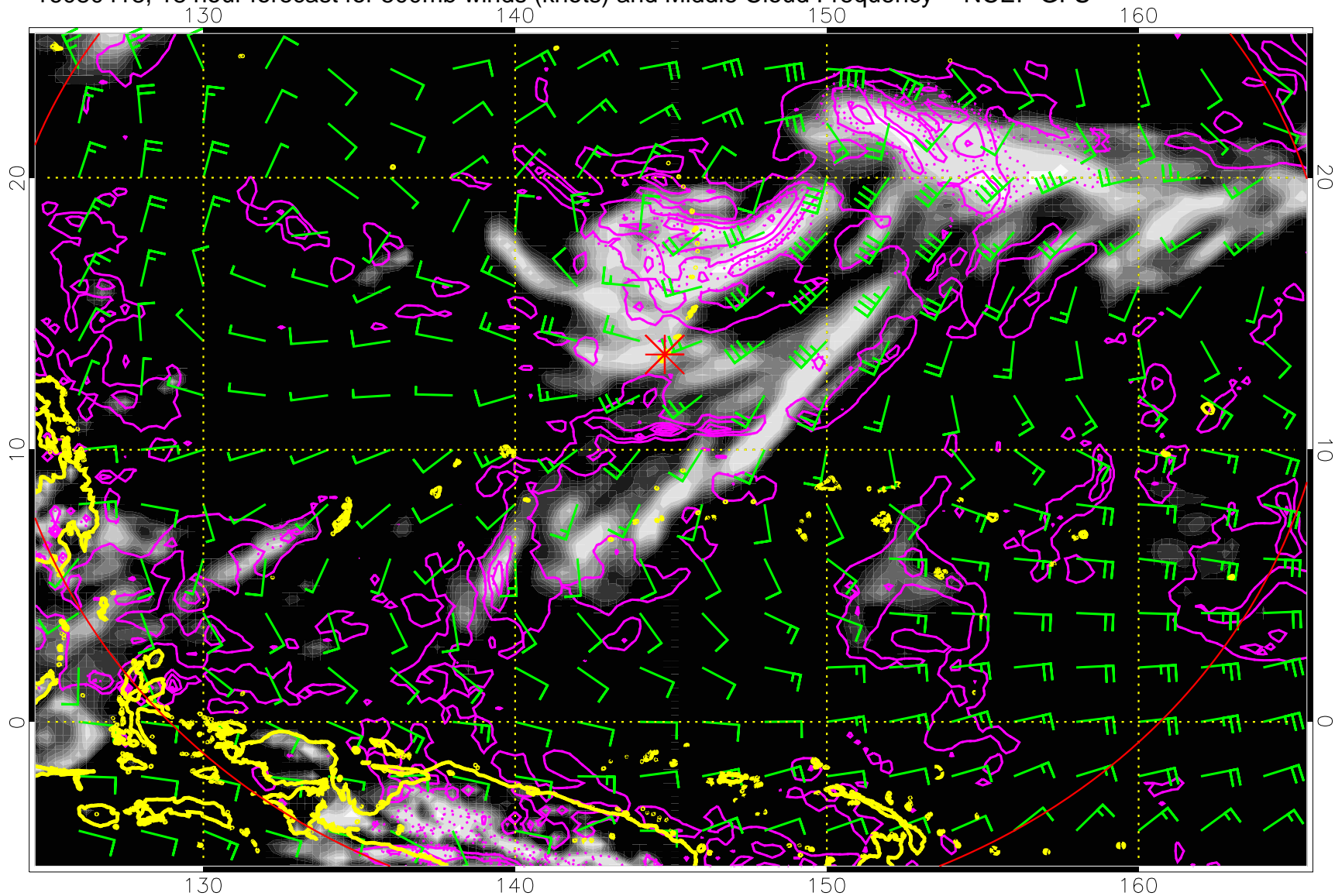
Precip (tot dot, conv sol) mm/day 40 mm/day contours, min 20

16080412, 12 hour forecast for 500mb winds (knots) and Middle Cloud Frequency -- NCEP GFS



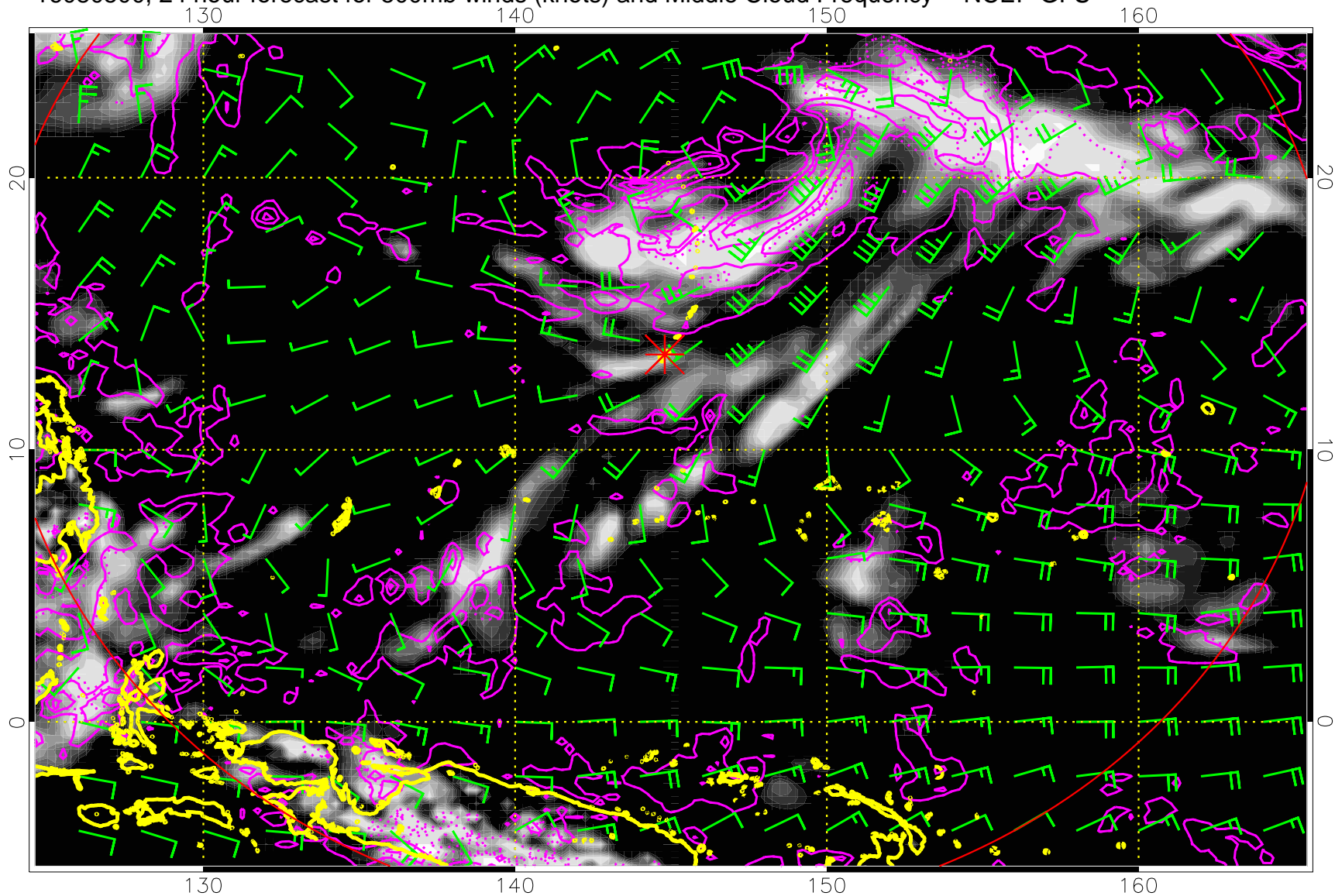
Precip (tot dot, conv sol) mm/day 40 mm/day contours, min 20

16080418, 18 hour forecast for 500mb winds (knots) and Middle Cloud Frequency -- NCEP GFS



Precip (tot dot, conv sol) mm/day 40 mm/day contours, min 20

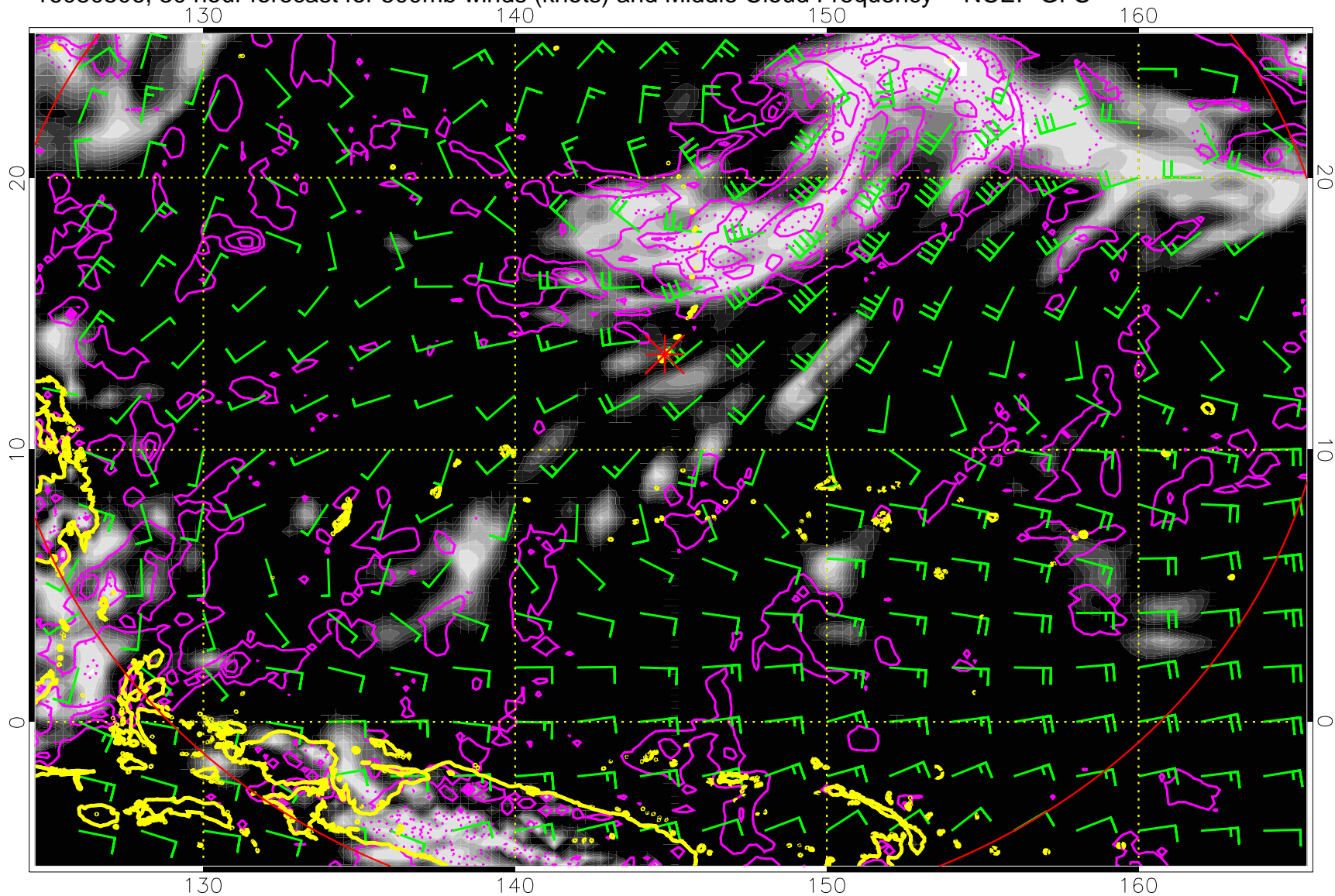
16080500, 24 hour forecast for 500mb winds (knots) and Middle Cloud Frequency -- NCEP GFS



0.0 0.2 0.4 0.6 0.8 1.0
Middle Cloud Frequency

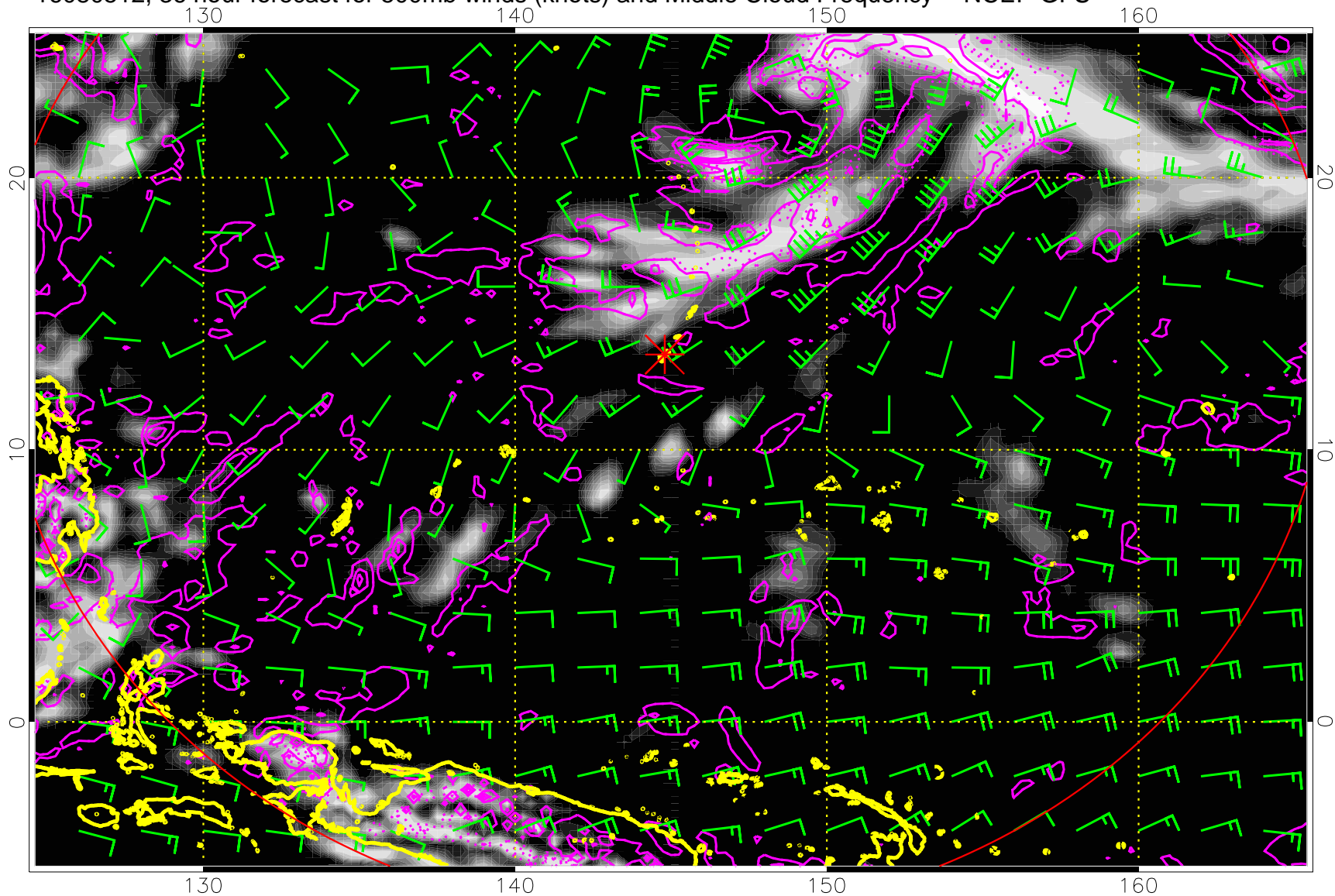
Precip (tot dot, conv sol) mm/day 40 mm/day contours, min 20

16080506, 30 hour forecast for 500mb winds (knots) and Middle Cloud Frequency -- NCEP GFS



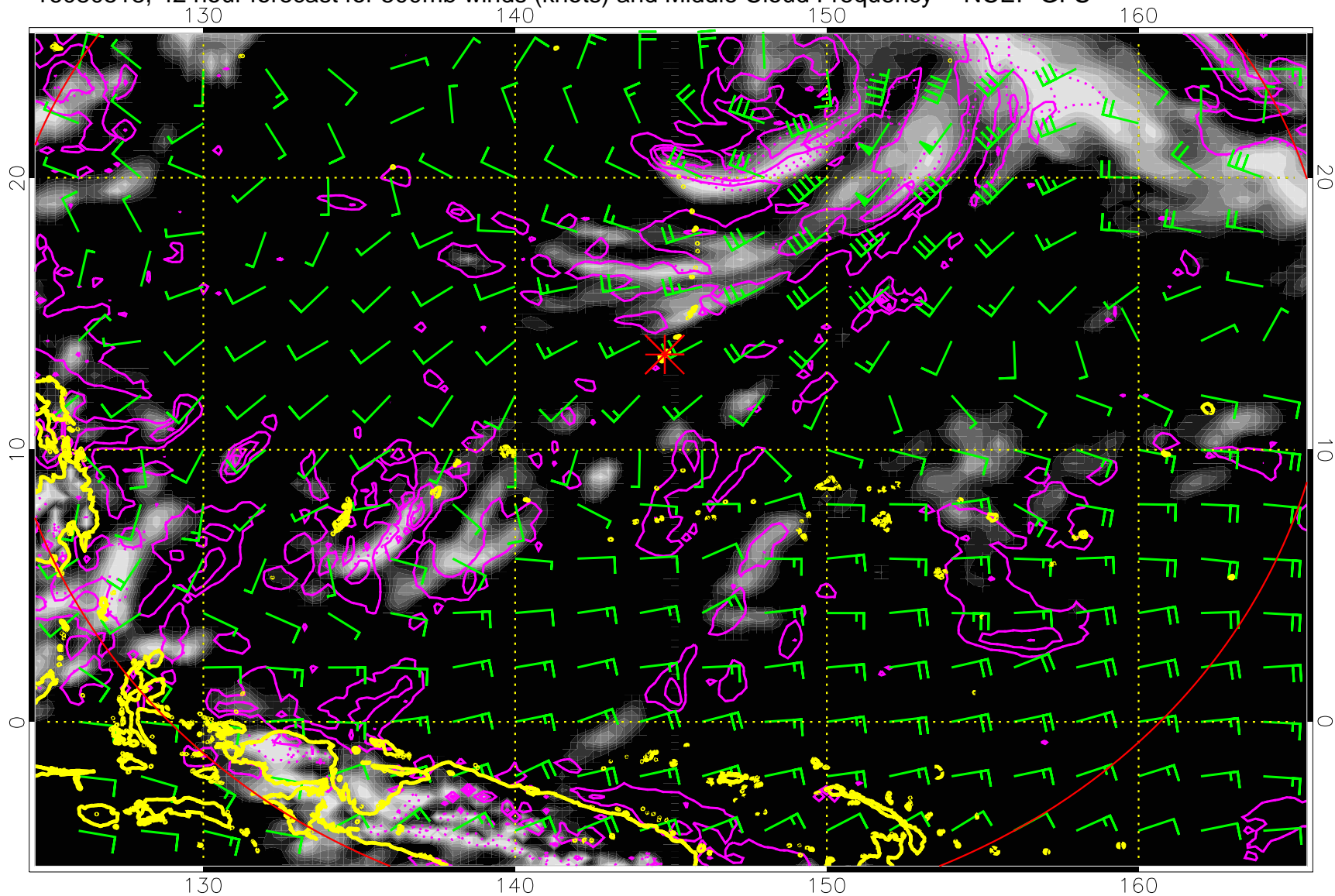
Precip (tot dot, conv sol) mm/day 40 mm/day contours, min 20

16080512, 36 hour forecast for 500mb winds (knots) and Middle Cloud Frequency -- NCEP GFS



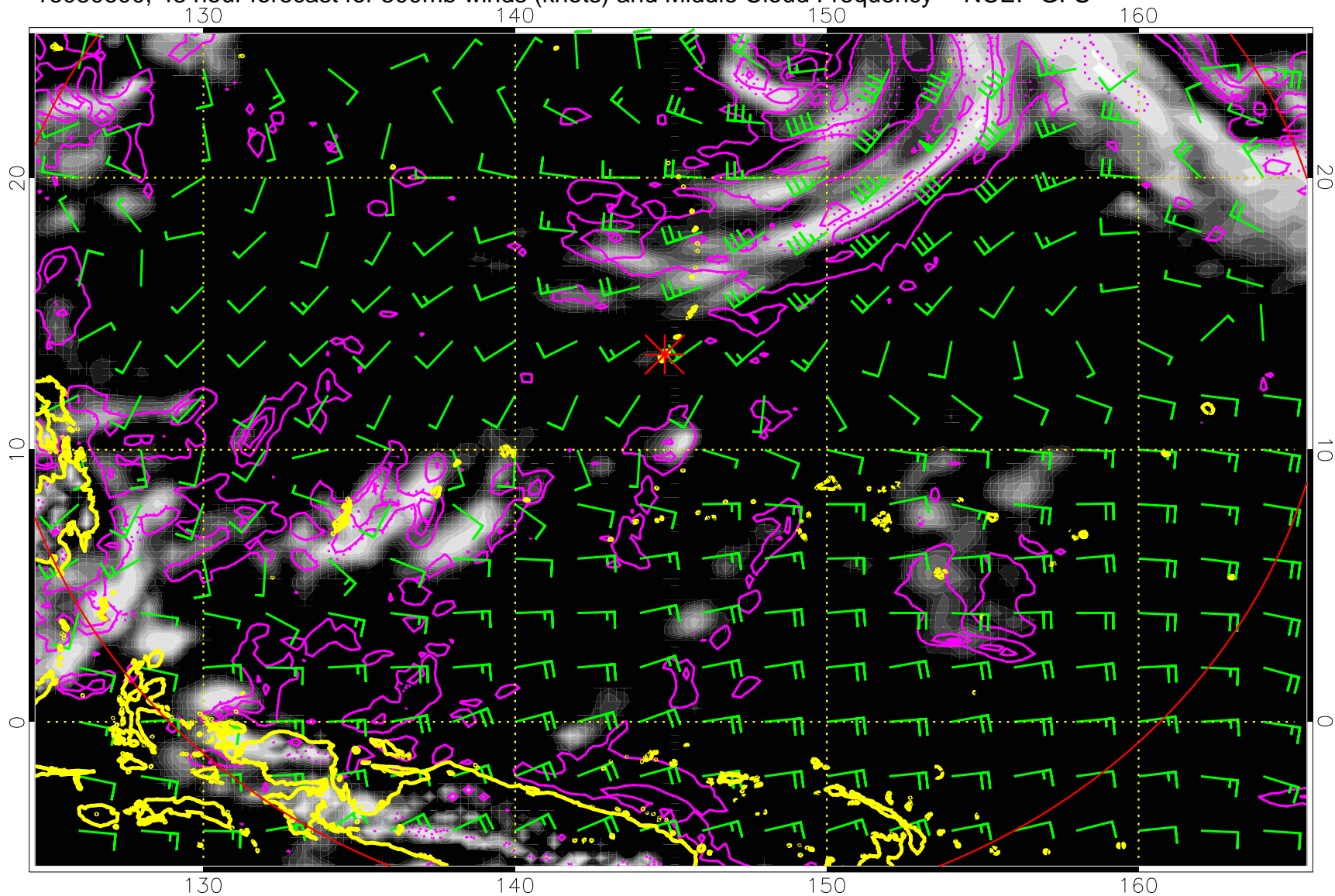
Precip (tot dot, conv sol) mm/day 40 mm/day contours, min 20

16080518, 42 hour forecast for 500mb winds (knots) and Middle Cloud Frequency -- NCEP GFS



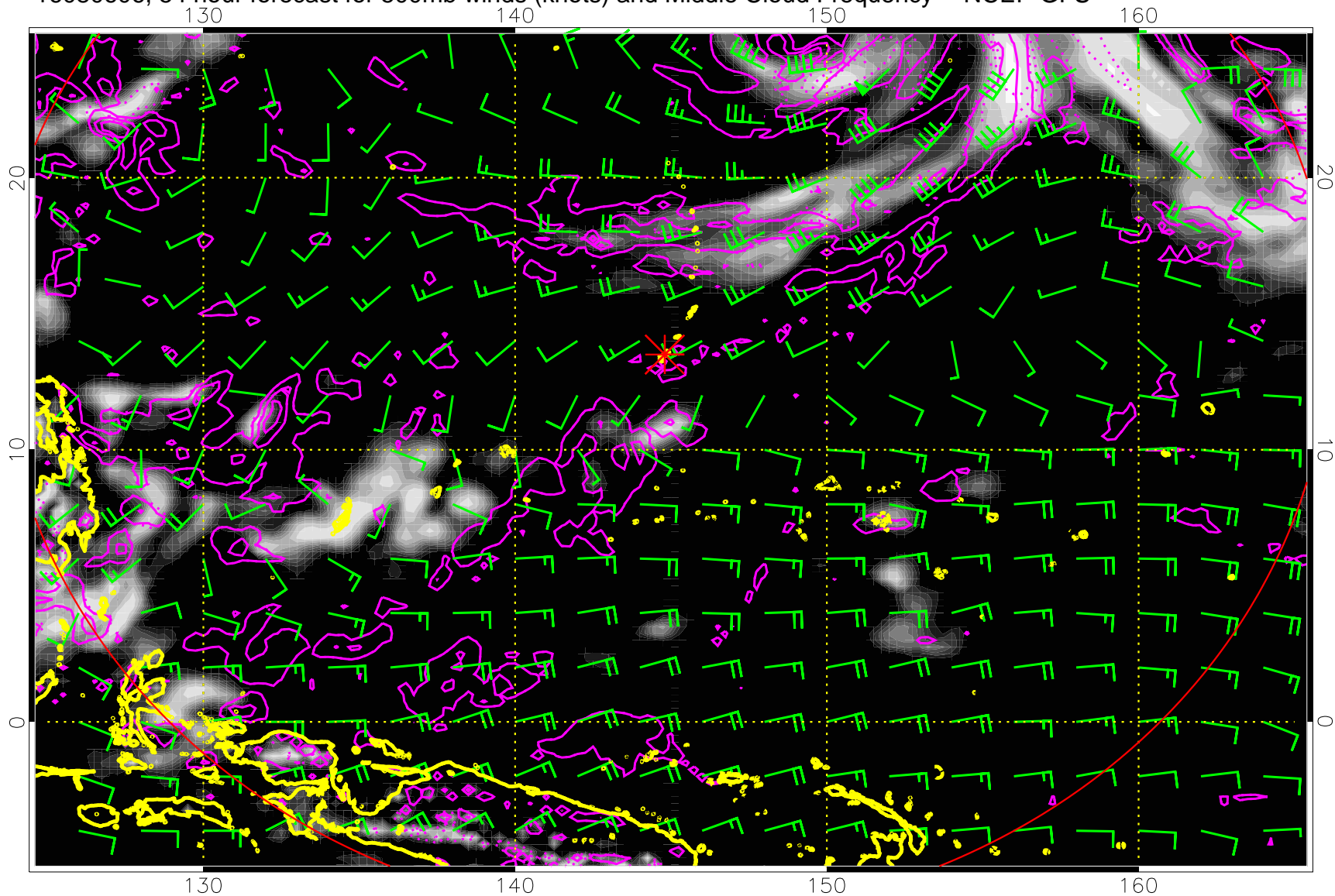
Precip (tot dot, conv sol) mm/day 40 mm/day contours, min 20

16080600, 48 hour forecast for 500mb winds (knots) and Middle Cloud Frequency -- NCEP GFS



Precip (tot dot, conv sol) mm/day 40 mm/day contours, min 20

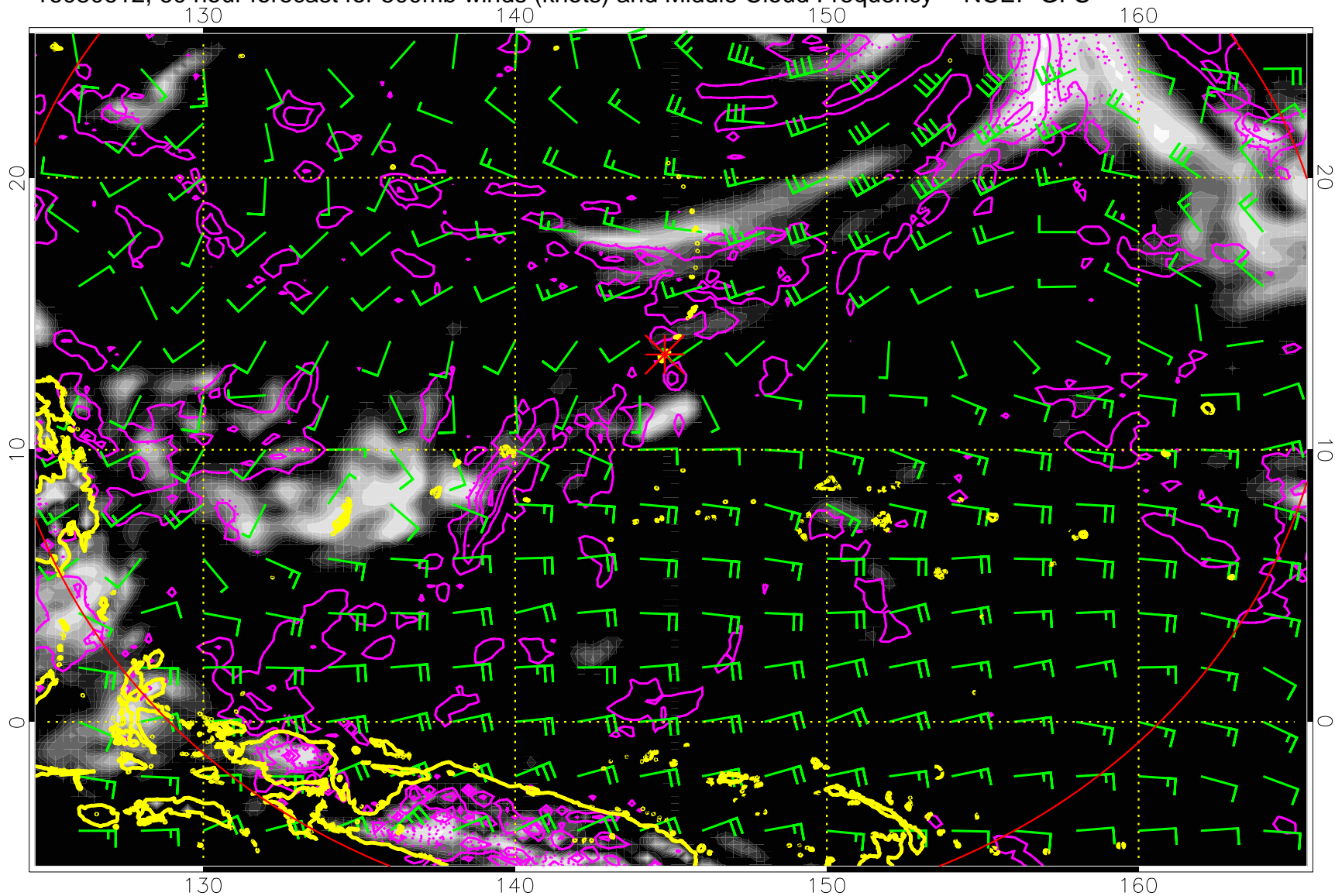
16080606, 54 hour forecast for 500mb winds (knots) and Middle Cloud Frequency -- NCEP GFS



0.0 0.2 0.4 0.6 0.8 1.0
Middle Cloud Frequency

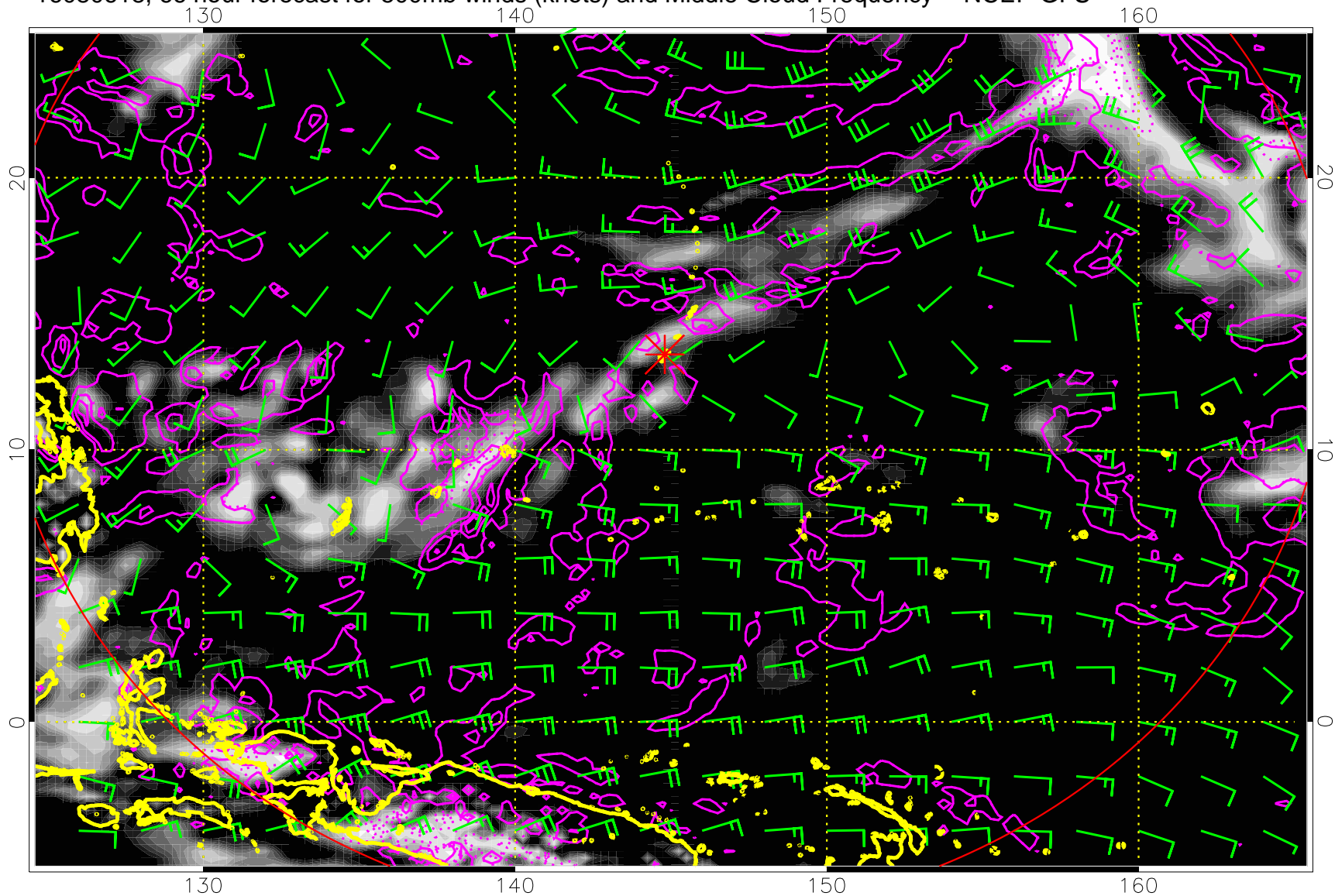
Precip (tot dot, conv sol) mm/day 40 mm/day contours, min 20

16080612, 60 hour forecast for 500mb winds (knots) and Middle Cloud Frequency -- NCEP GFS



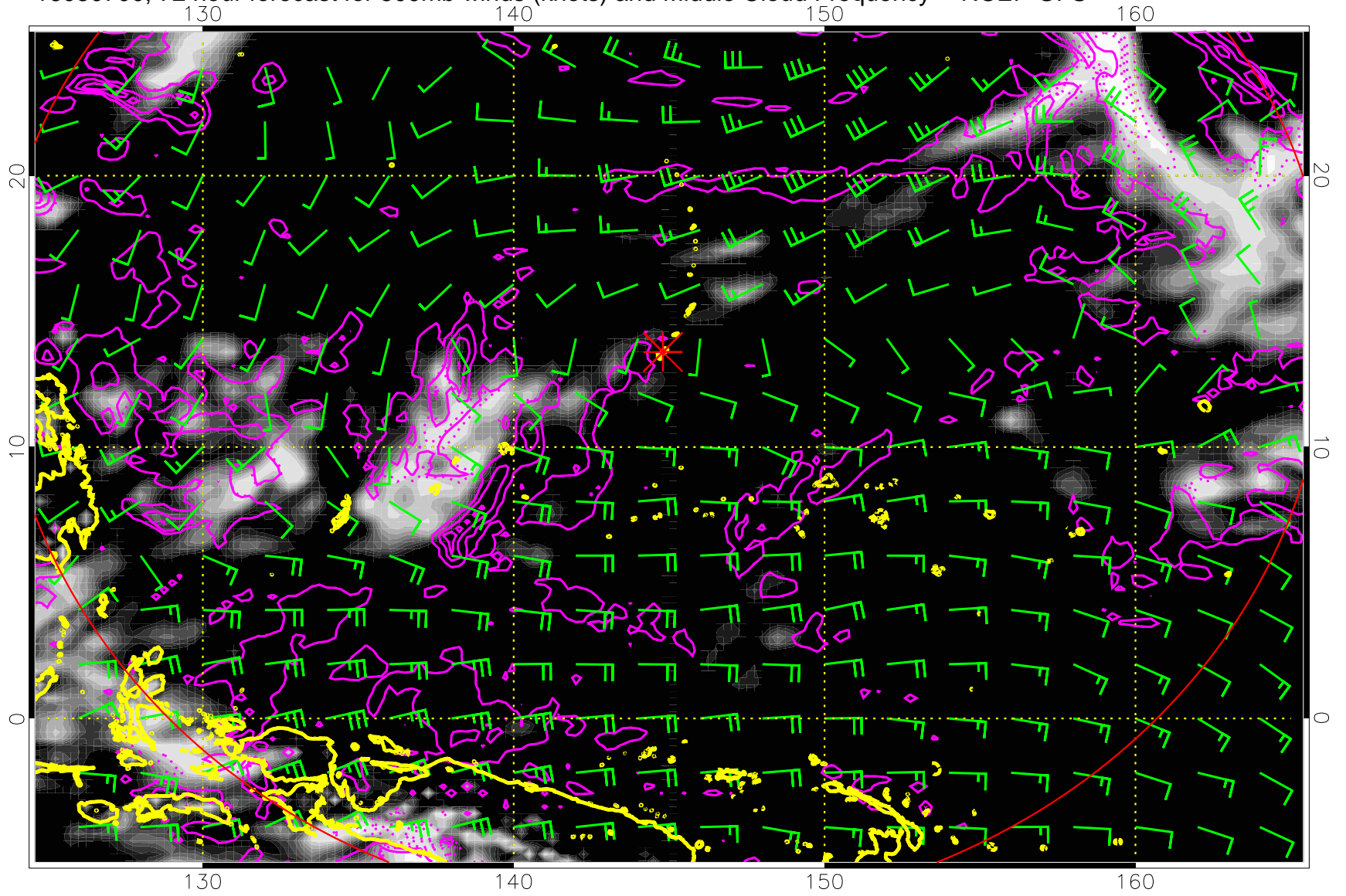
Precip (tot dot, conv sol) mm/day 40 mm/day contours, min 20

16080618, 66 hour forecast for 500mb winds (knots) and Middle Cloud Frequency -- NCEP GFS



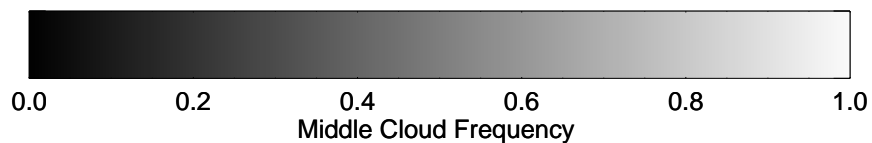
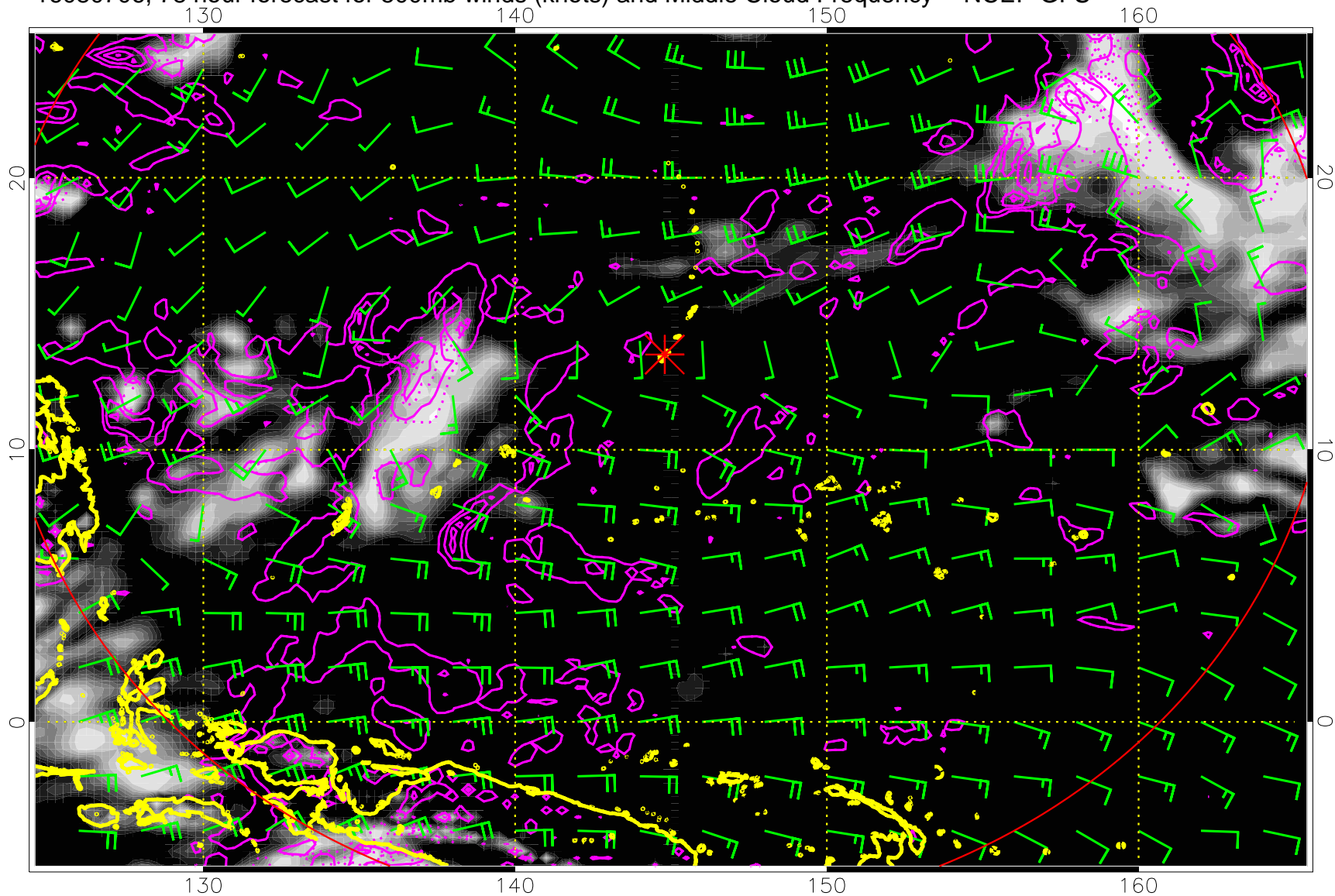
Precip (tot dot, conv sol) mm/day 40 mm/day contours, min 20

16080700, 72 hour forecast for 500mb winds (knots) and Middle Cloud Frequency -- NCEP GFS



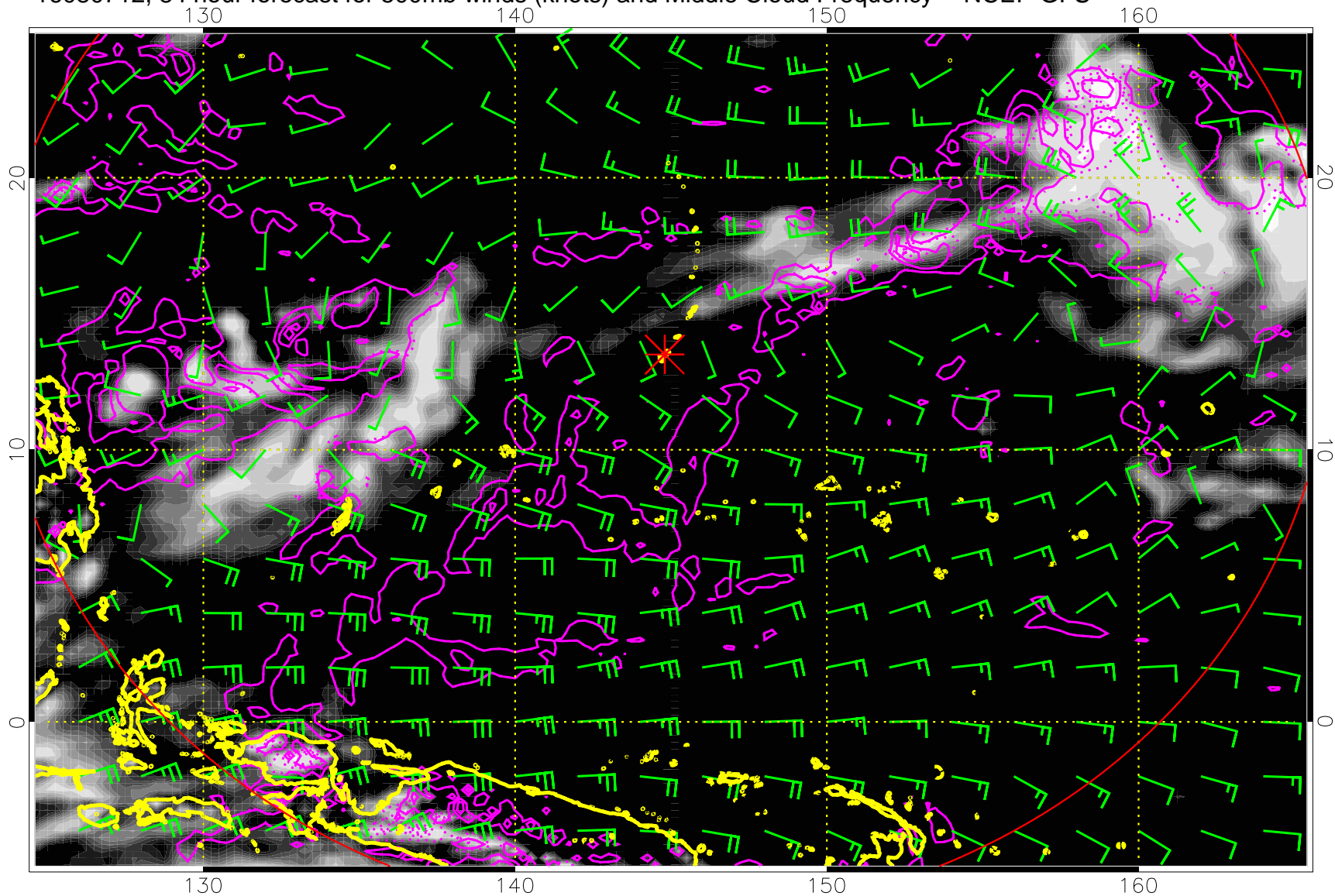
Precip (tot dot, conv sol) mm/day 40 mm/day contours, min 20

16080706, 78 hour forecast for 500mb winds (knots) and Middle Cloud Frequency -- NCEP GFS



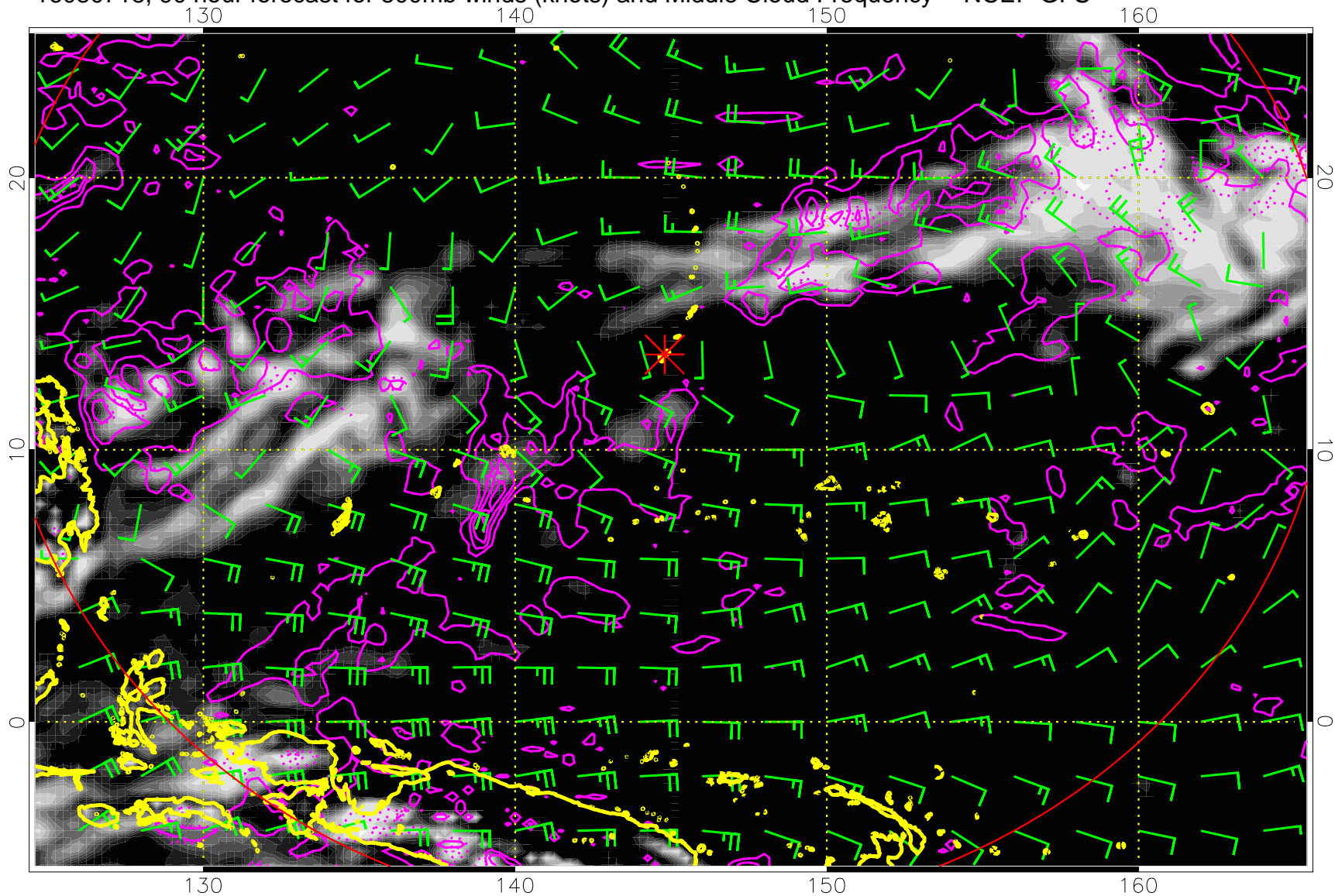
Precip (tot dot, conv sol) mm/day 40 mm/day contours, min 20

16080712, 84 hour forecast for 500mb winds (knots) and Middle Cloud Frequency -- NCEP GFS



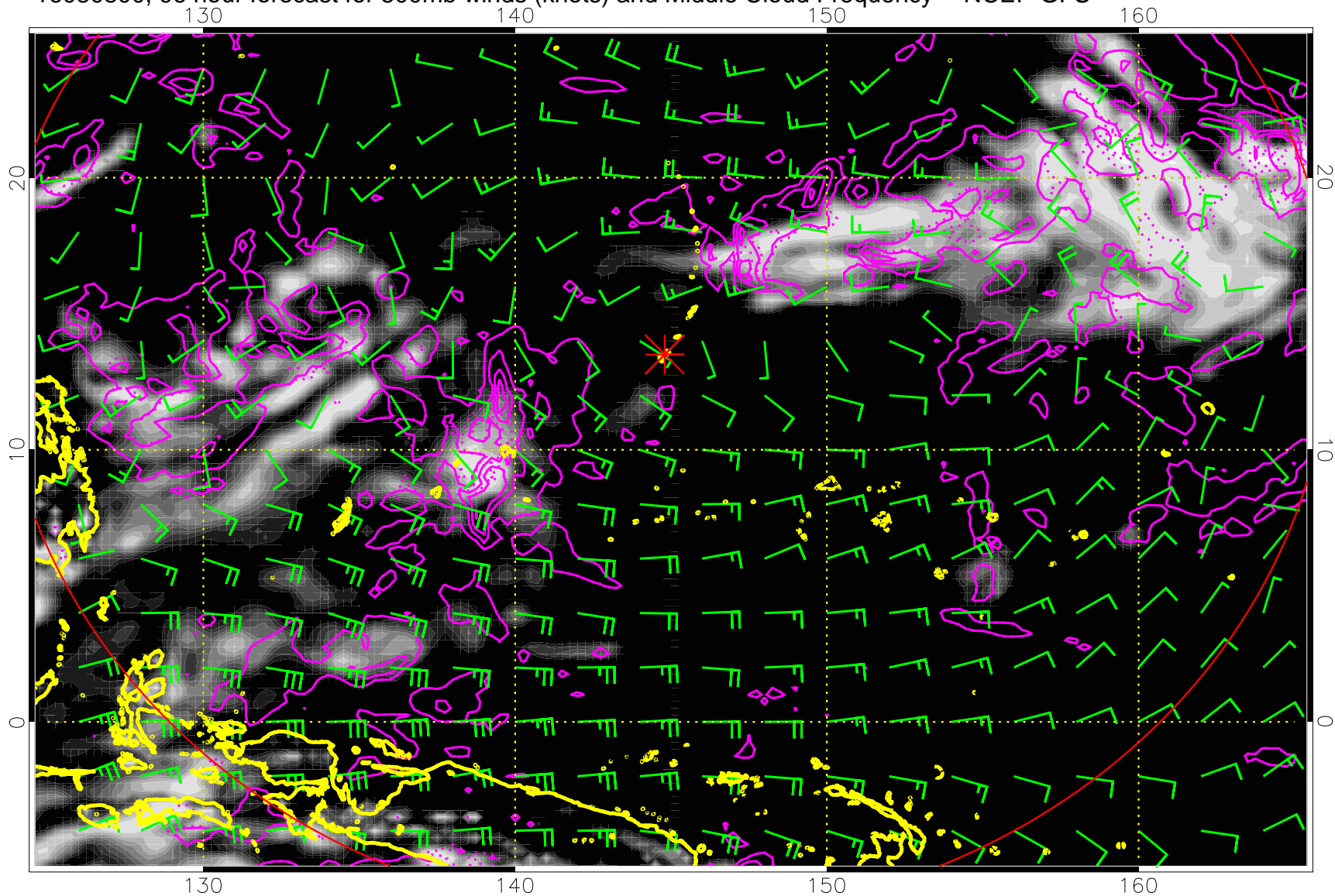
Precip (tot dot, conv sol) mm/day 40 mm/day contours, min 20

16080718, 90 hour forecast for 500mb winds (knots) and Middle Cloud Frequency -- NCEP GFS



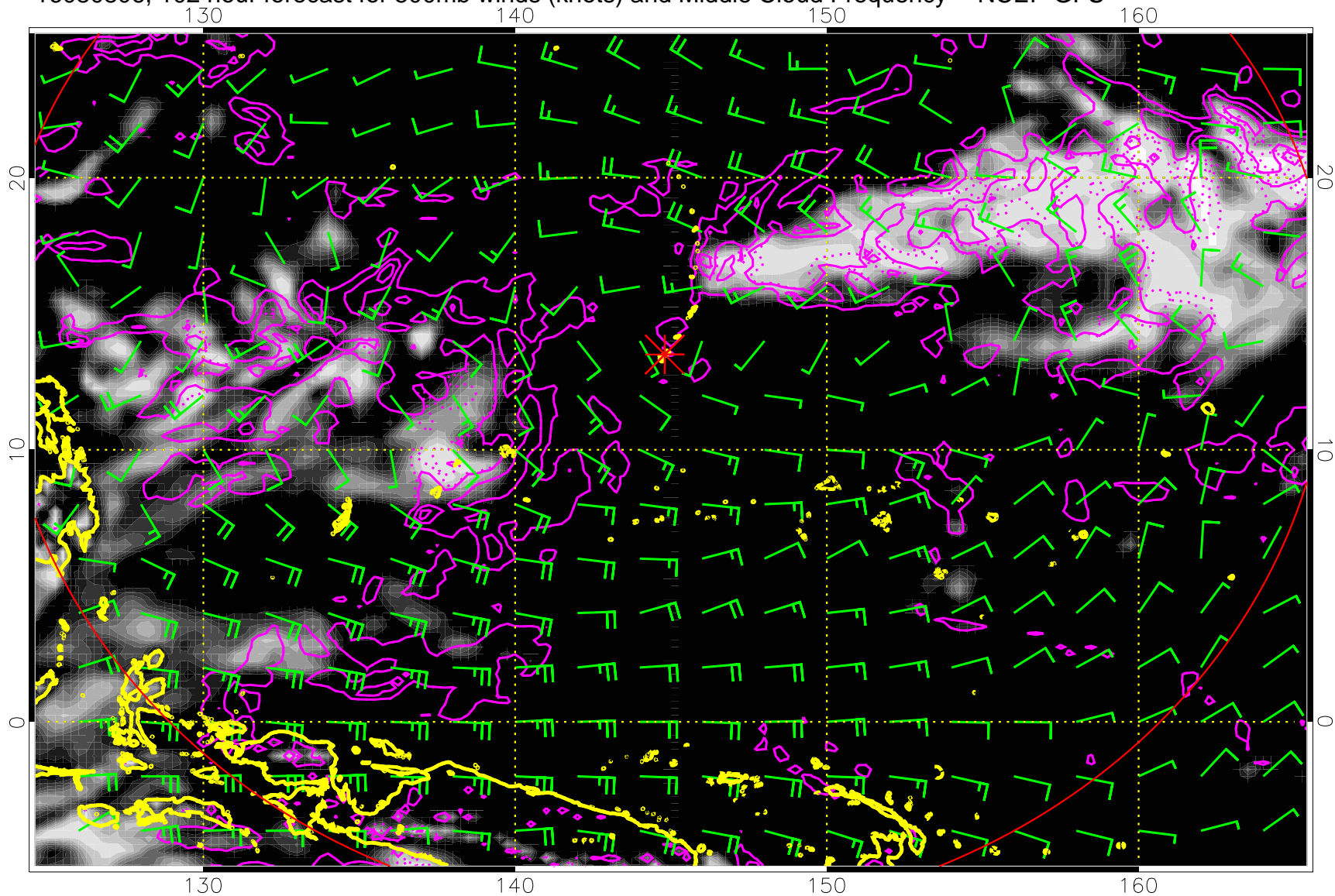
Precip (tot dot, conv sol) mm/day 40 mm/day contours, min 20

16080800, 96 hour forecast for 500mb winds (knots) and Middle Cloud Frequency -- NCEP GFS



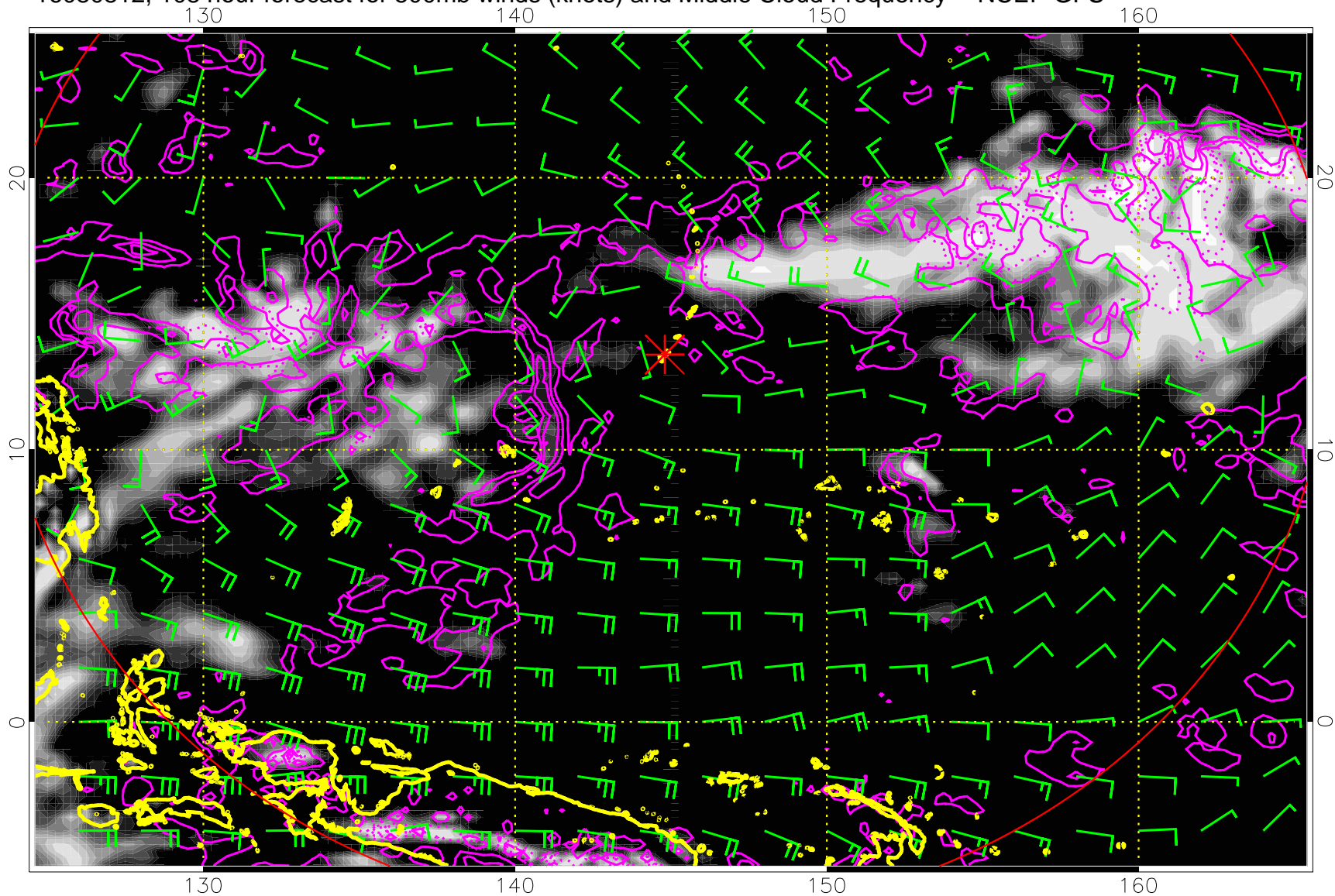
Precip (tot dot, conv sol) mm/day 40 mm/day contours, min 20

16080806, 102 hour forecast for 500mb winds (knots) and Middle Cloud Frequency -- NCEP GFS



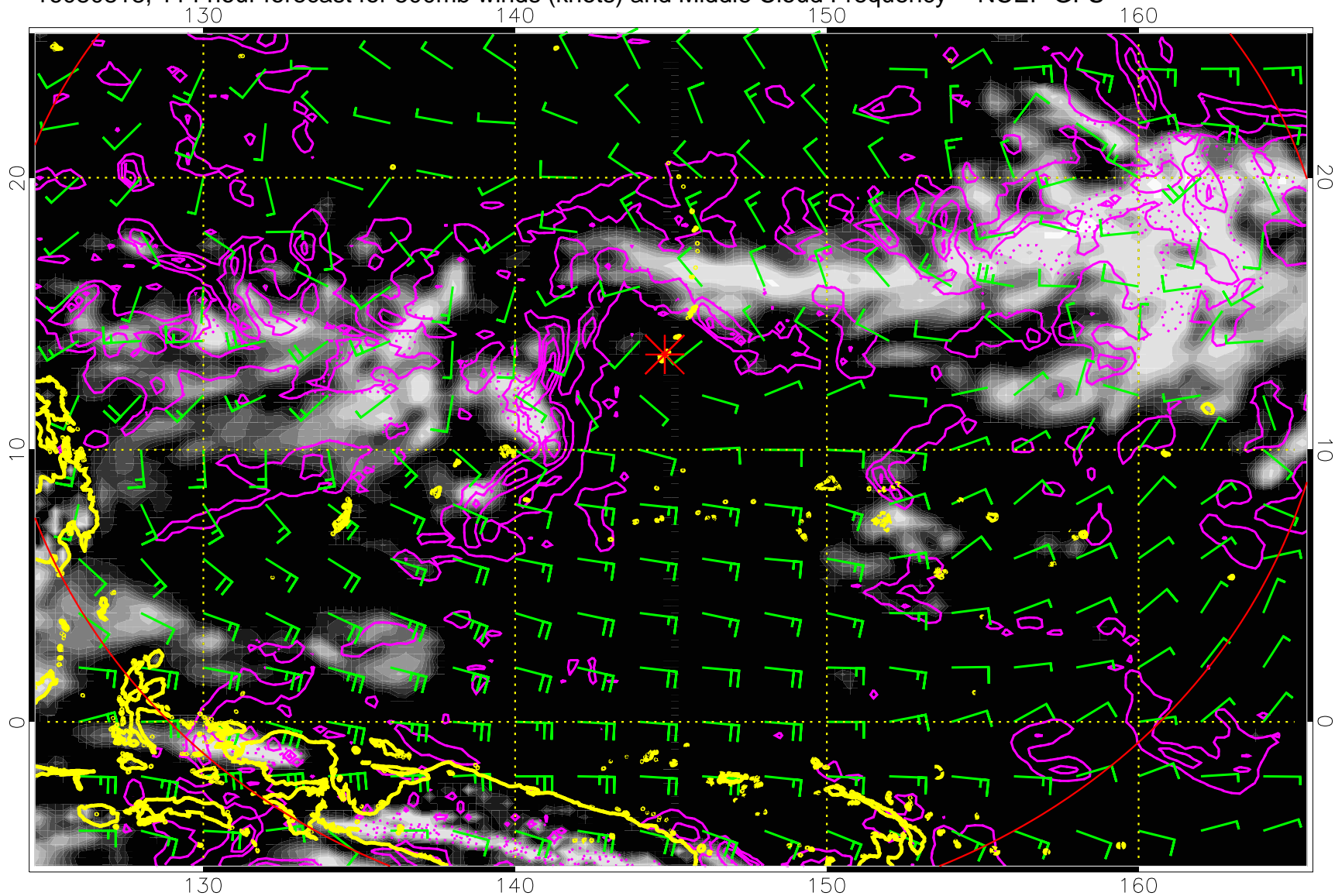
Precip (tot dot, conv sol) mm/day 40 mm/day contours, min 20

16080812, 108 hour forecast for 500mb winds (knots) and Middle Cloud Frequency -- NCEP GFS



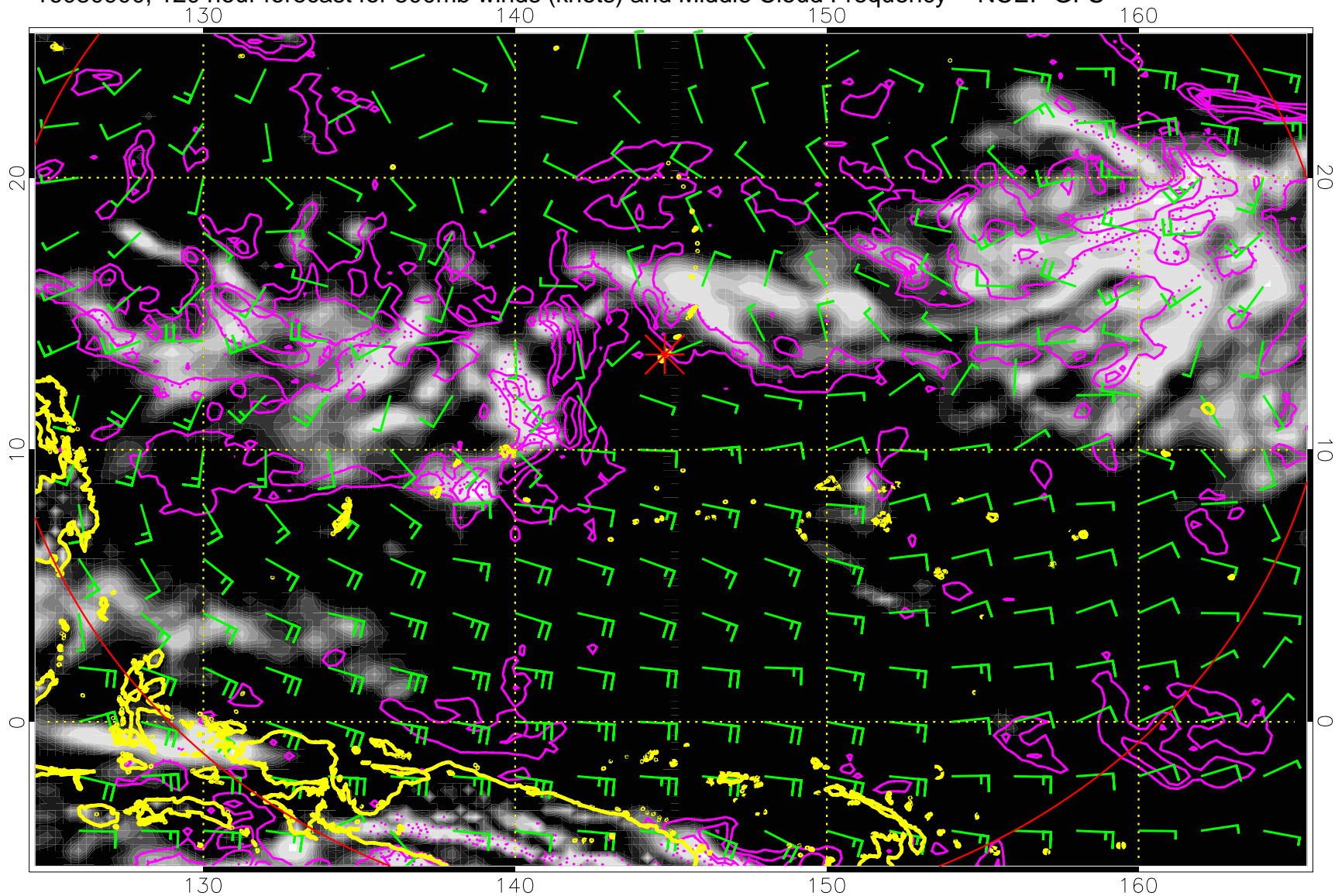
Precip (tot dot, conv sol) mm/day 40 mm/day contours, min 20

16080818, 114 hour forecast for 500mb winds (knots) and Middle Cloud Frequency -- NCEP GFS



Precip (tot dot, conv sol) mm/day 40 mm/day contours, min 20

16080900, 120 hour forecast for 500mb winds (knots) and Middle Cloud Frequency -- NCEP GFS



Precip (tot dot, conv sol) mm/day 40 mm/day contours, min 20