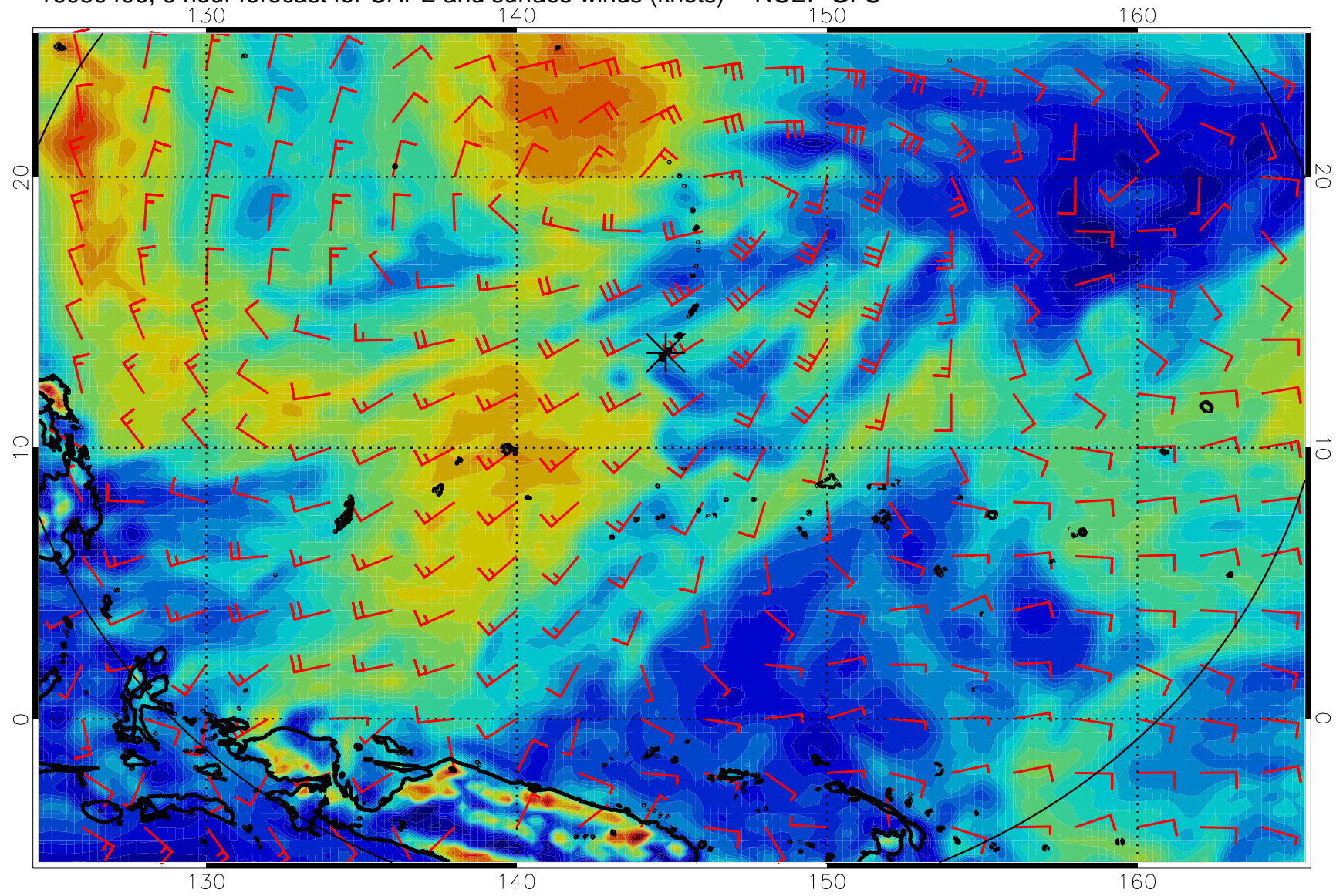
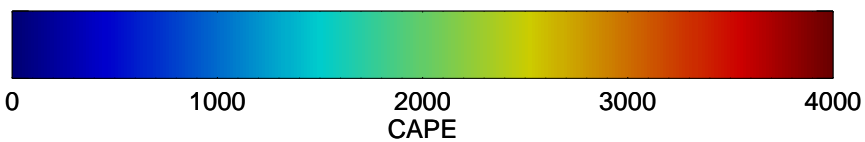
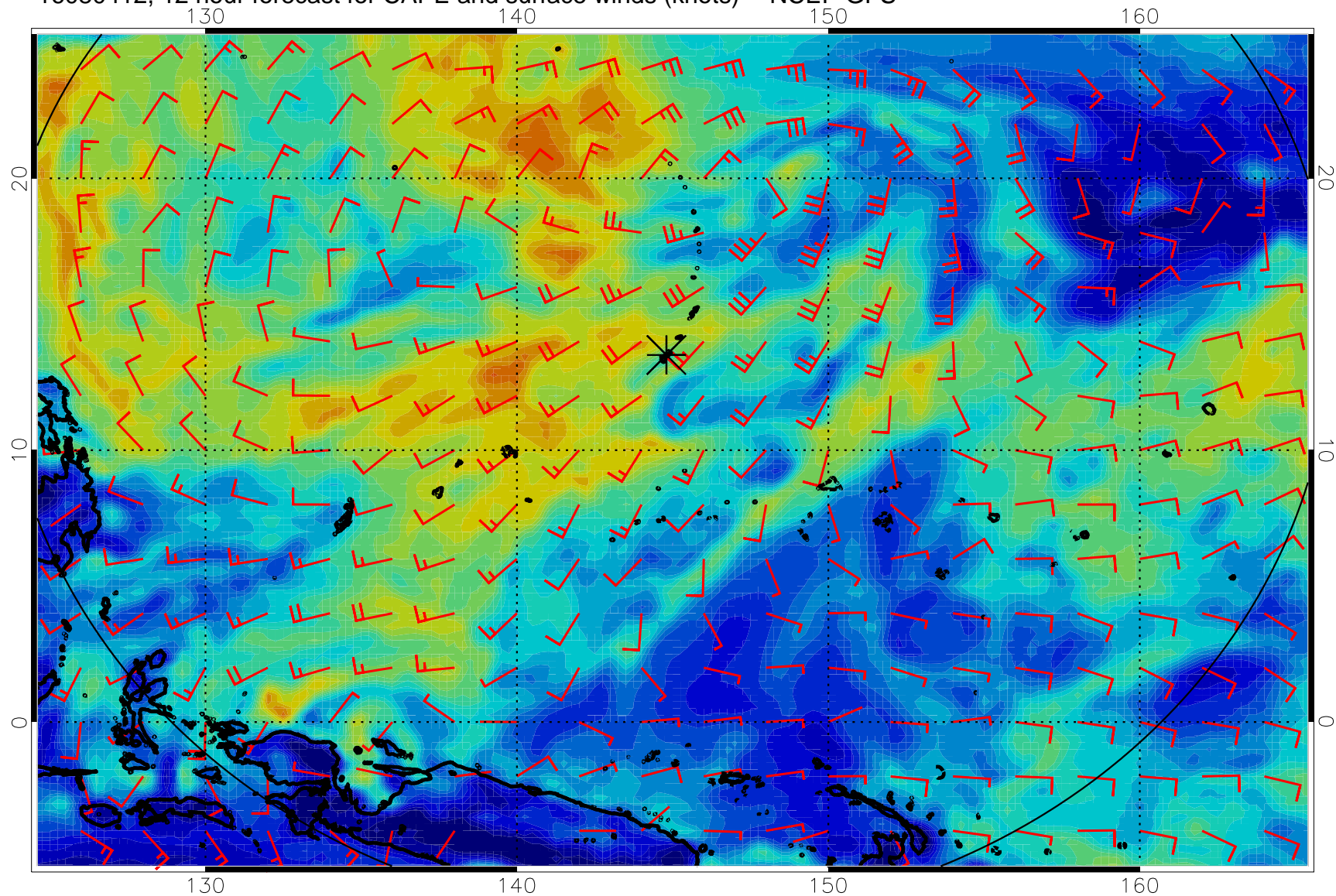


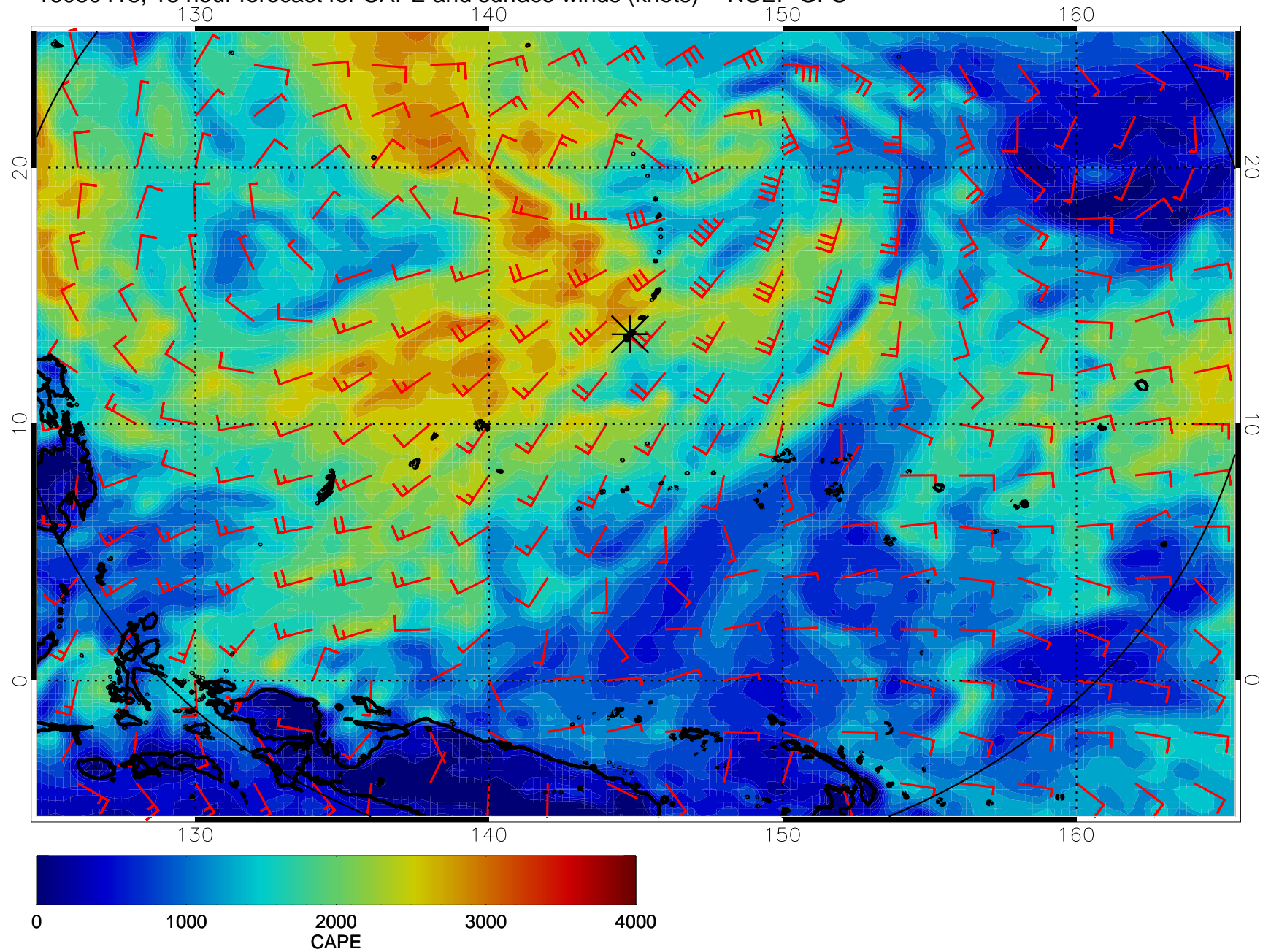
16080406, 6 hour forecast for CAPE and surface winds (knots) -- NCEP GFS



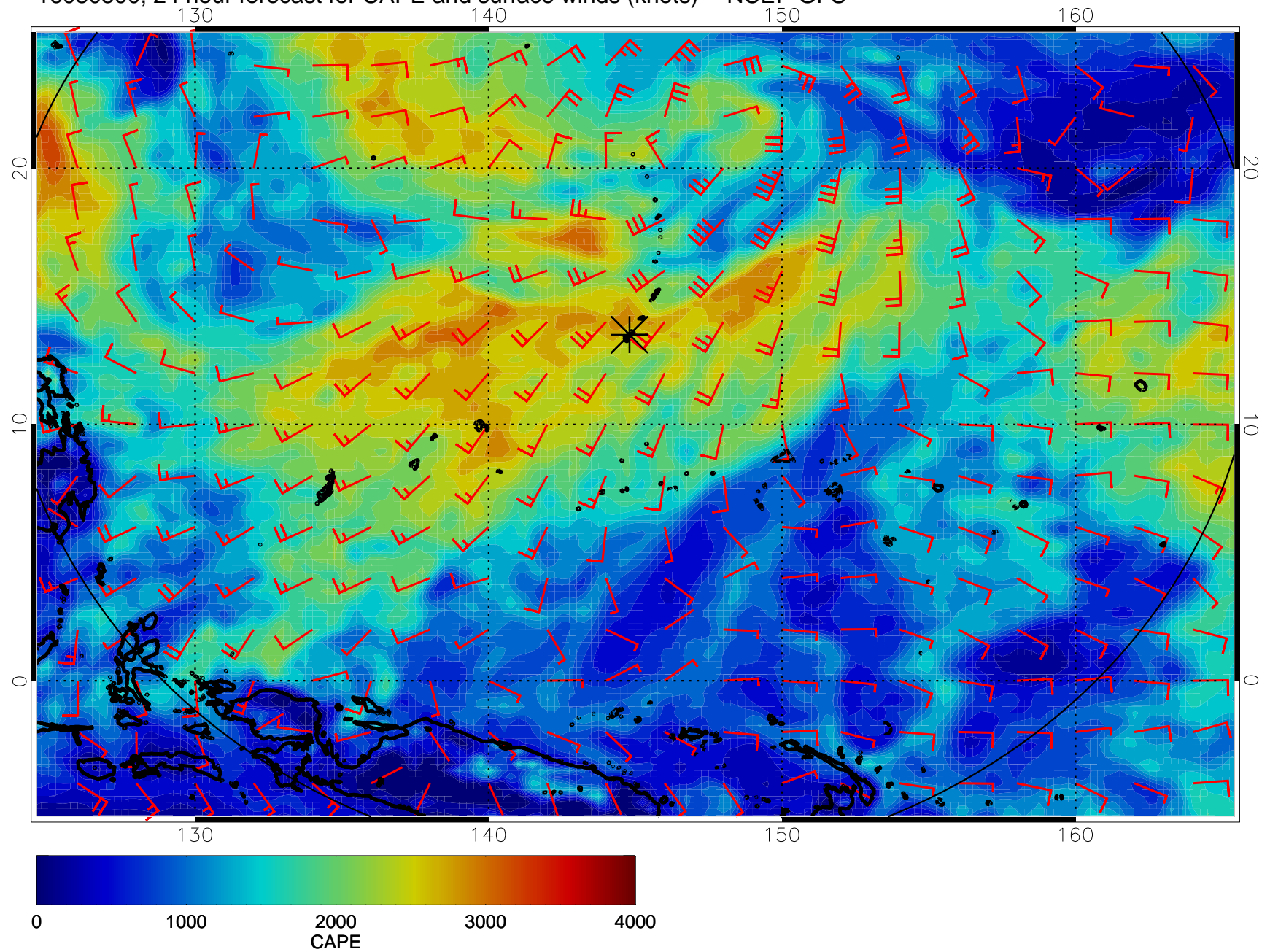
16080412, 12 hour forecast for CAPE and surface winds (knots) -- NCEP GFS



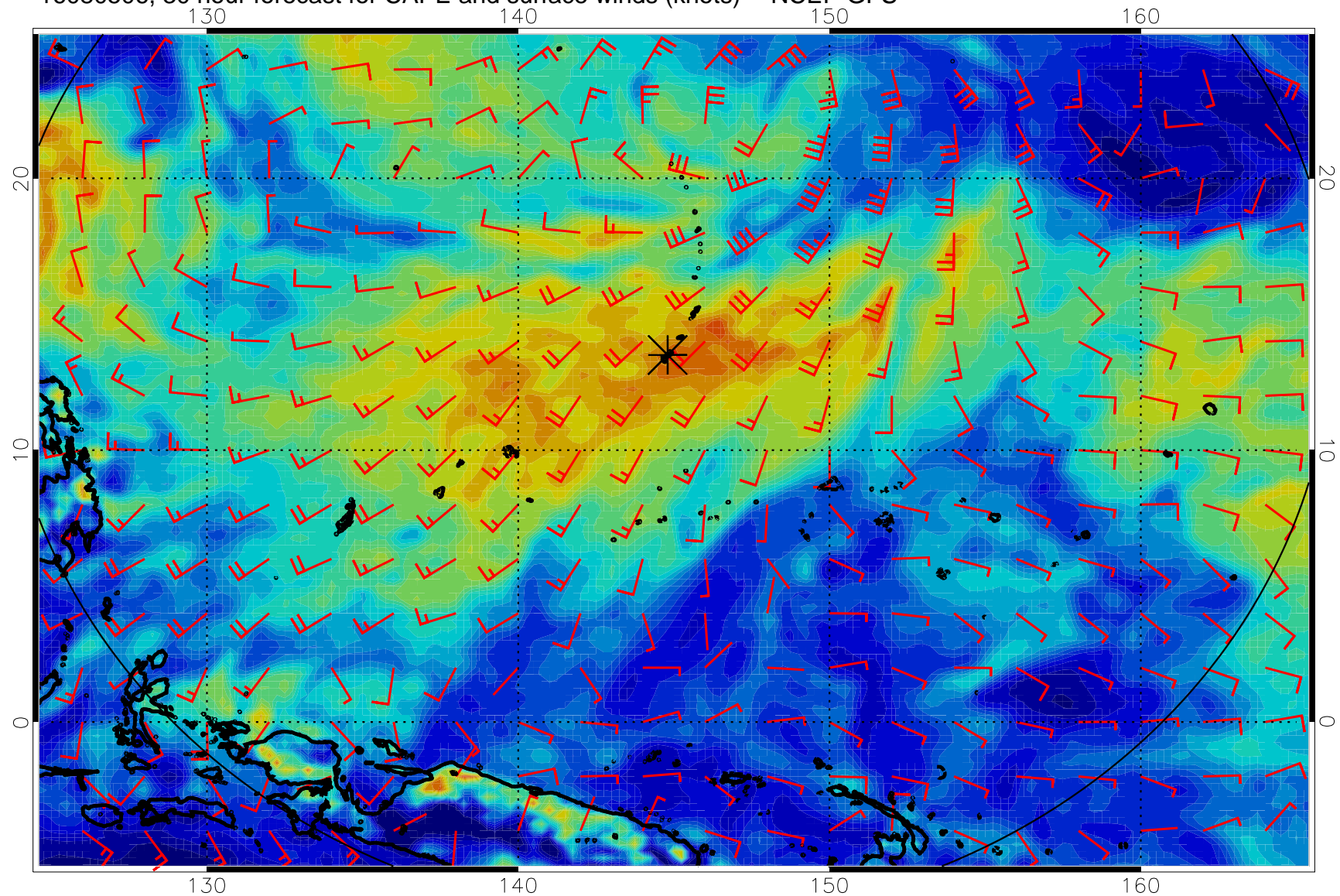
16080418, 18 hour forecast for CAPE and surface winds (knots) -- NCEP GFS



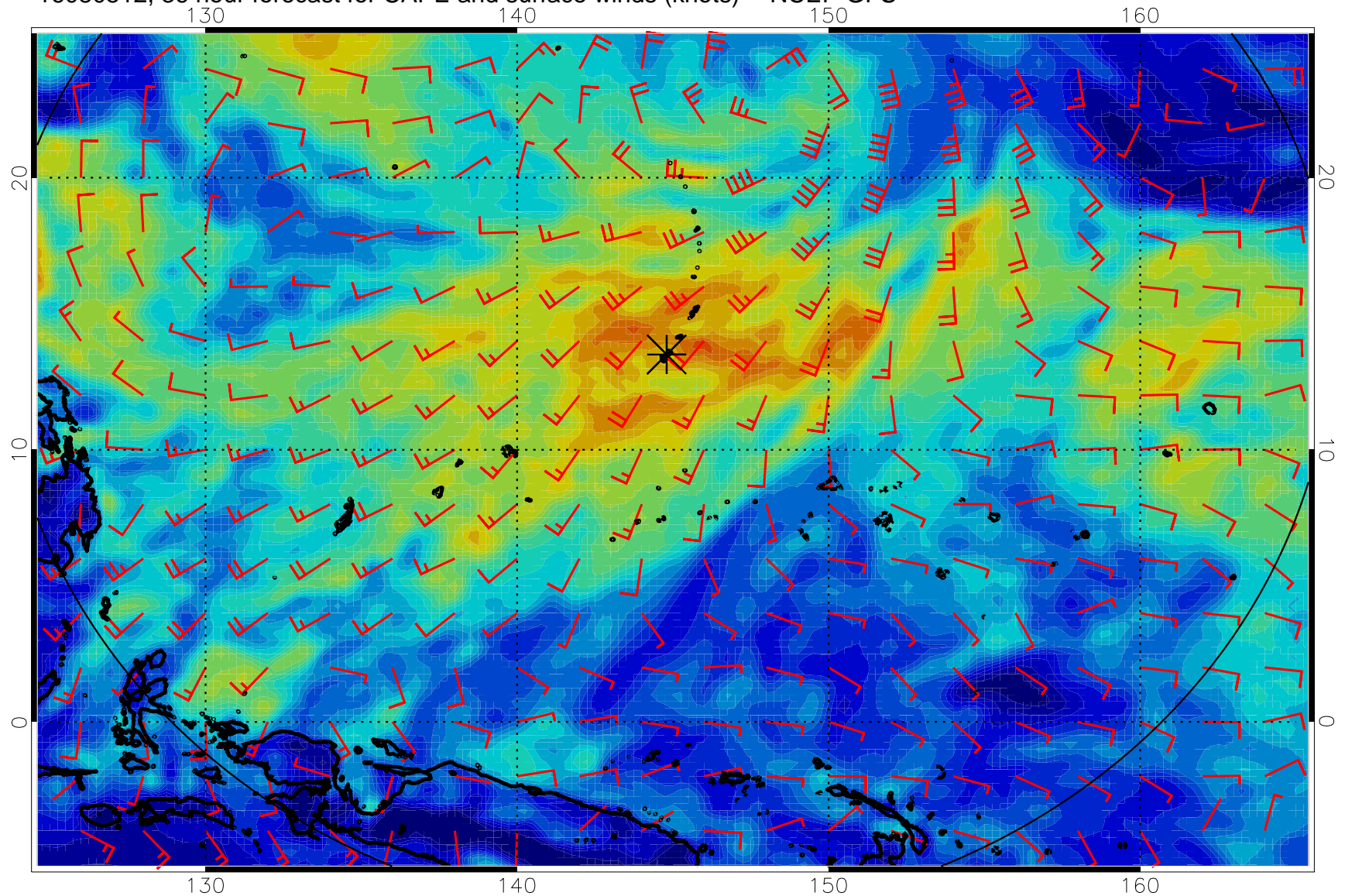
16080500, 24 hour forecast for CAPE and surface winds (knots) -- NCEP GFS



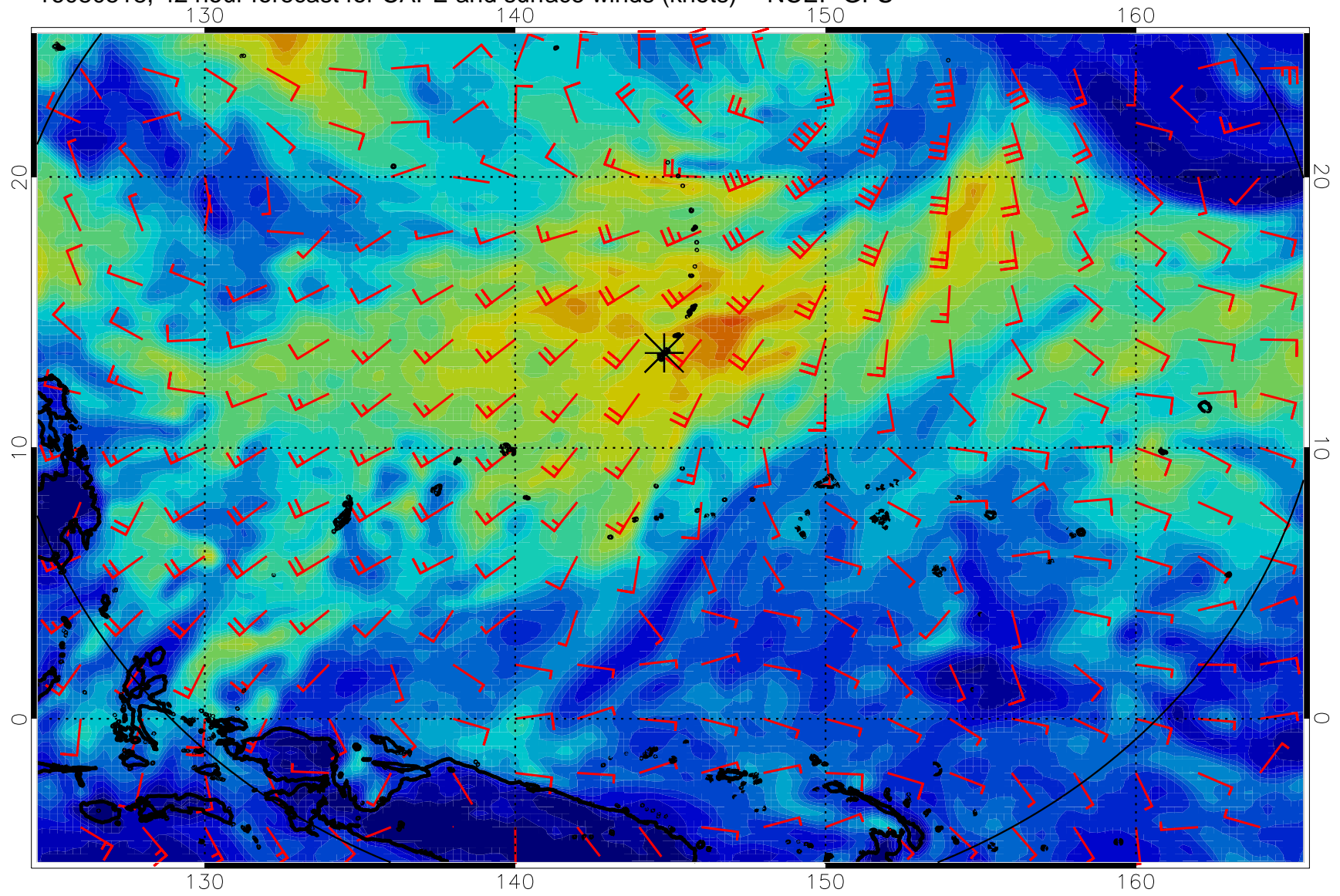
16080506, 30 hour forecast for CAPE and surface winds (knots) -- NCEP GFS



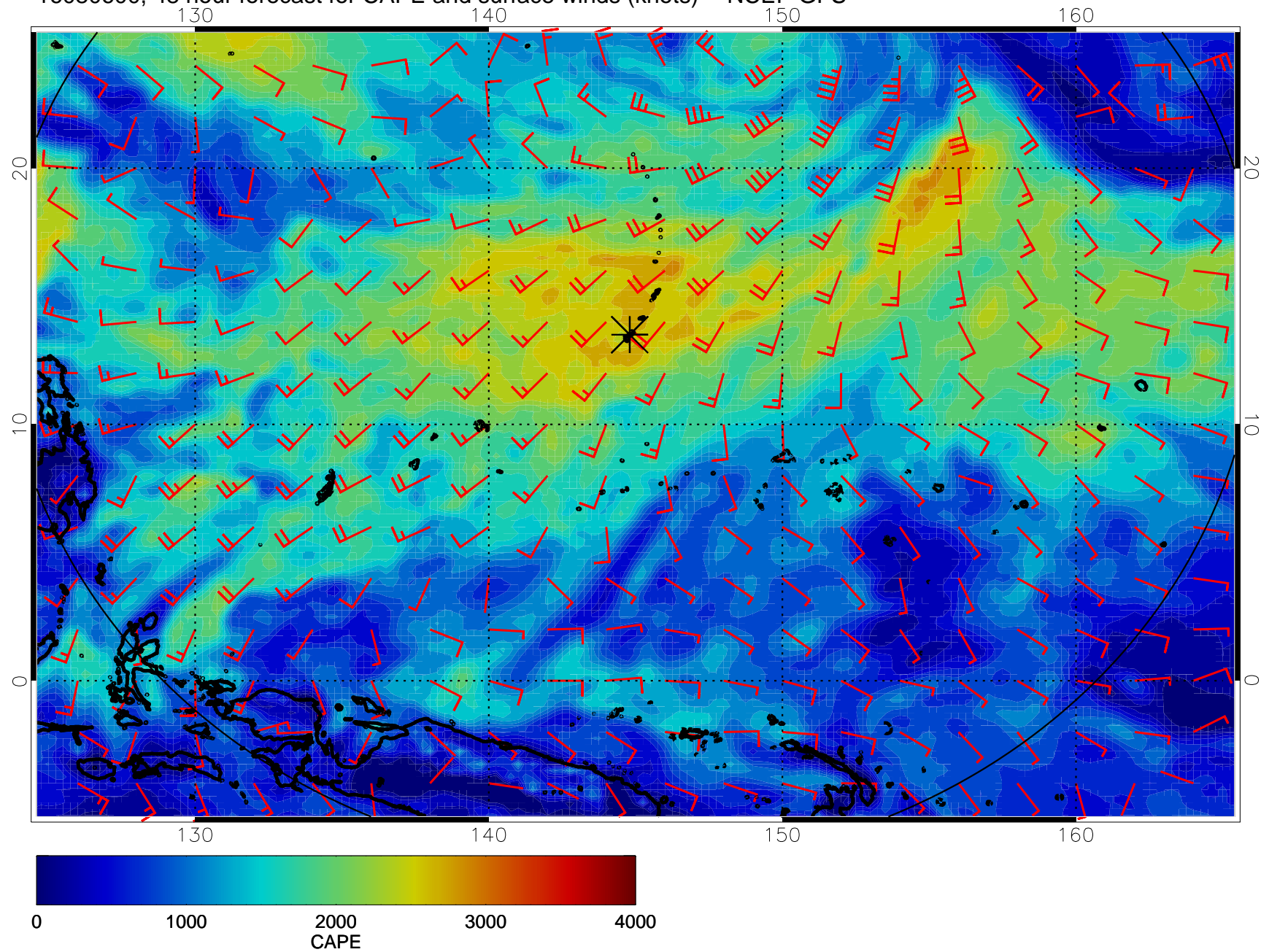
16080512, 36 hour forecast for CAPE and surface winds (knots) -- NCEP GFS



16080518, 42 hour forecast for CAPE and surface winds (knots) -- NCEP GFS

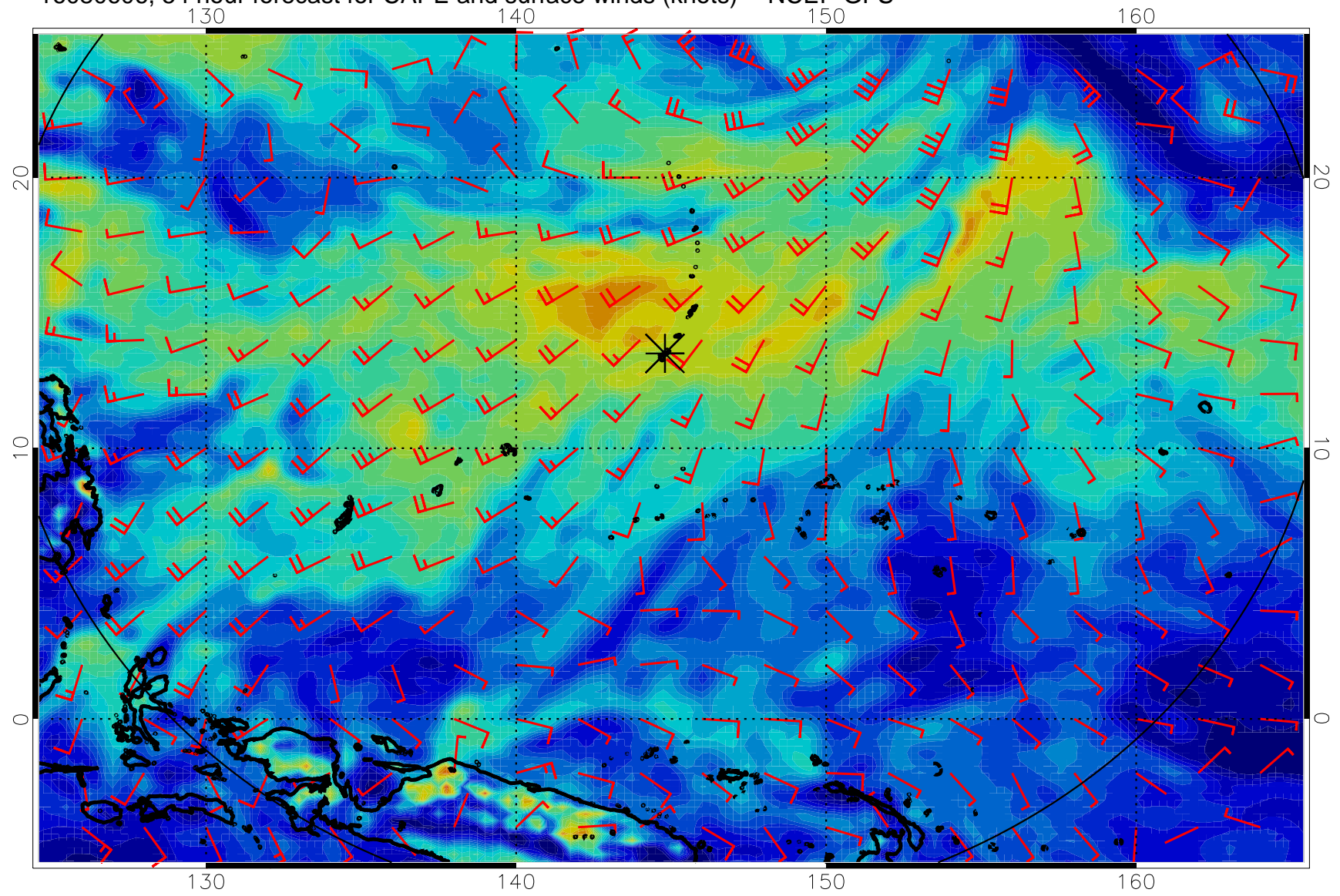


16080600, 48 hour forecast for CAPE and surface winds (knots) -- NCEP GFS

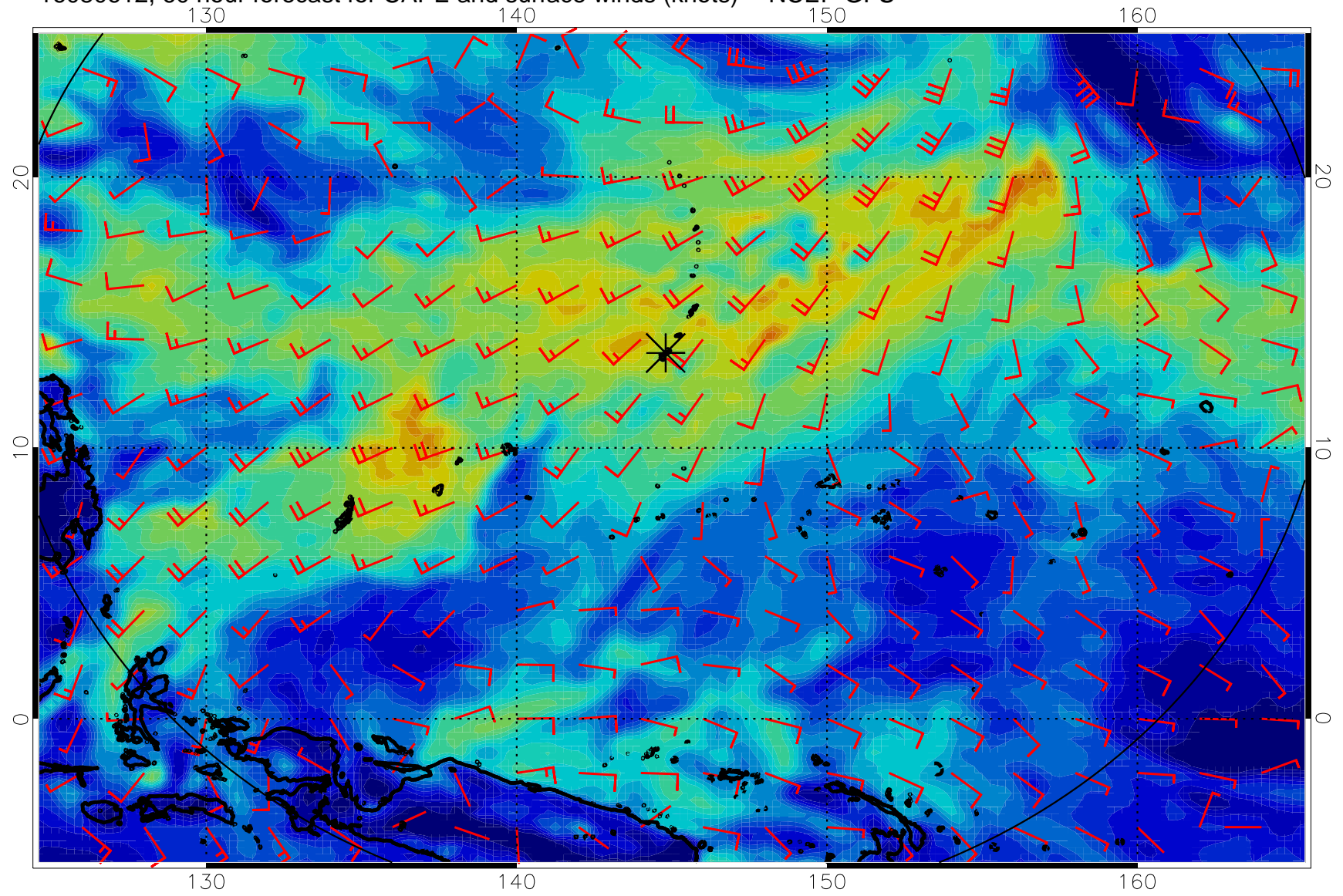




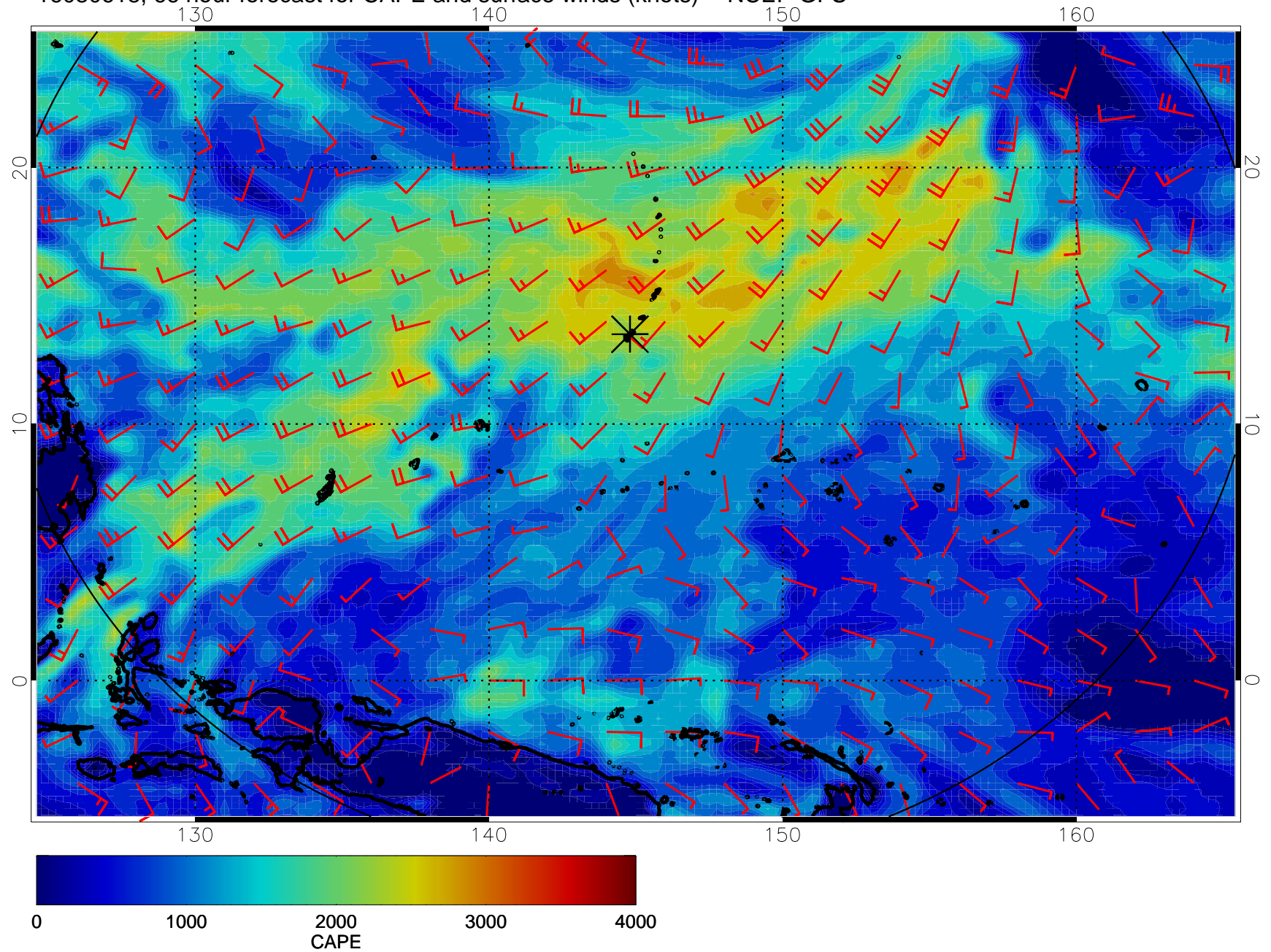
16080606, 54 hour forecast for CAPE and surface winds (knots) -- NCEP GFS



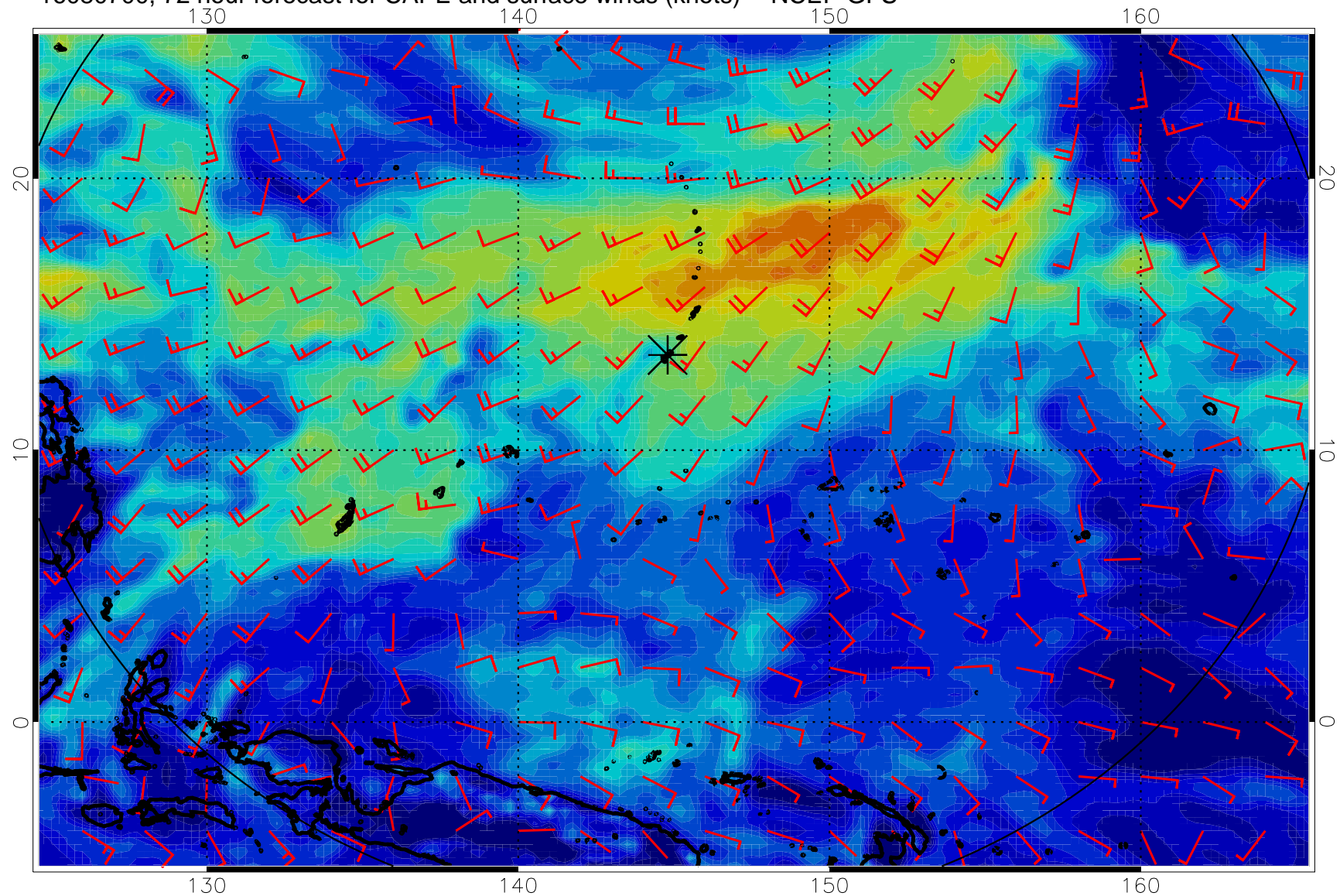
16080612, 60 hour forecast for CAPE and surface winds (knots) -- NCEP GFS



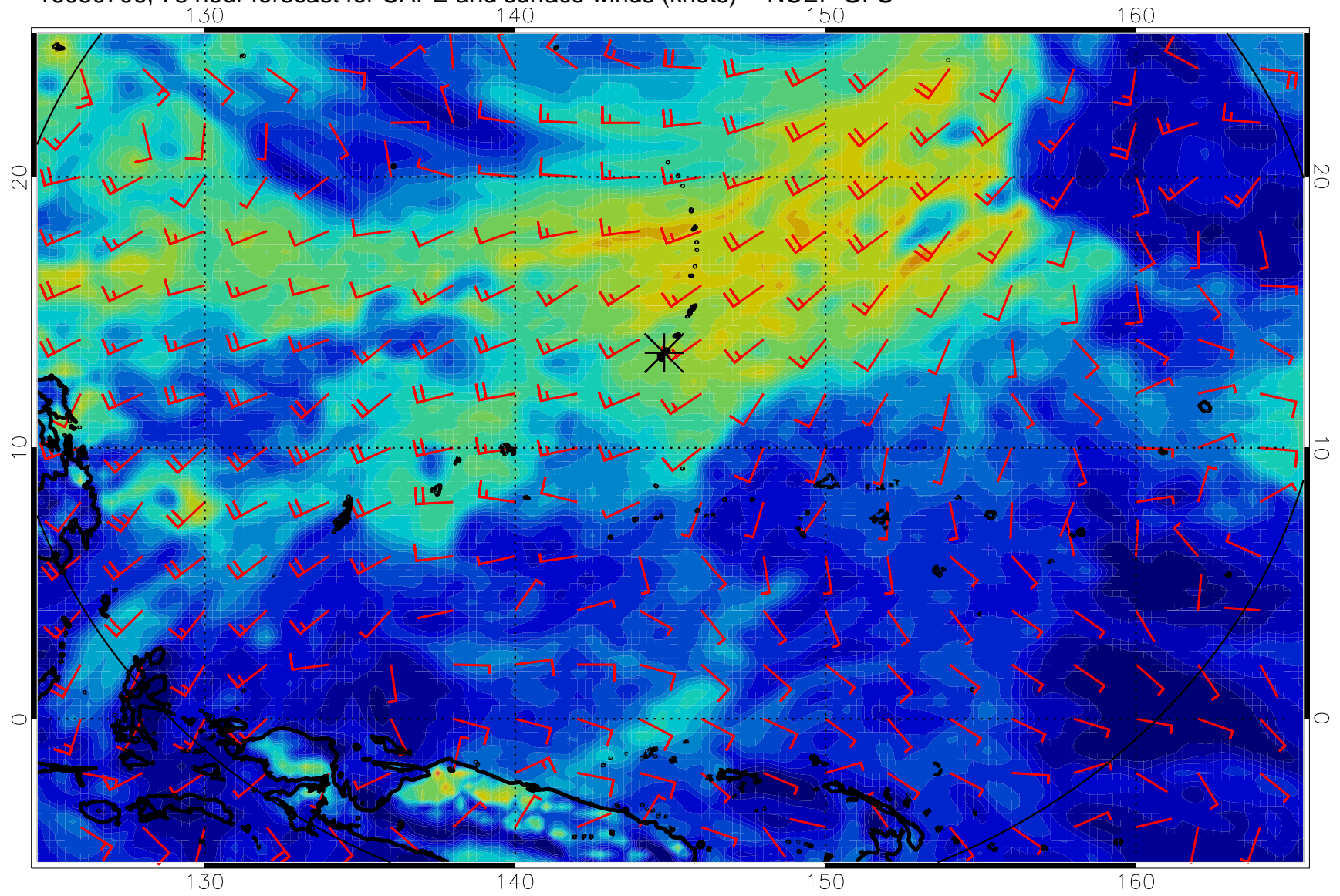
16080618, 66 hour forecast for CAPE and surface winds (knots) -- NCEP GFS



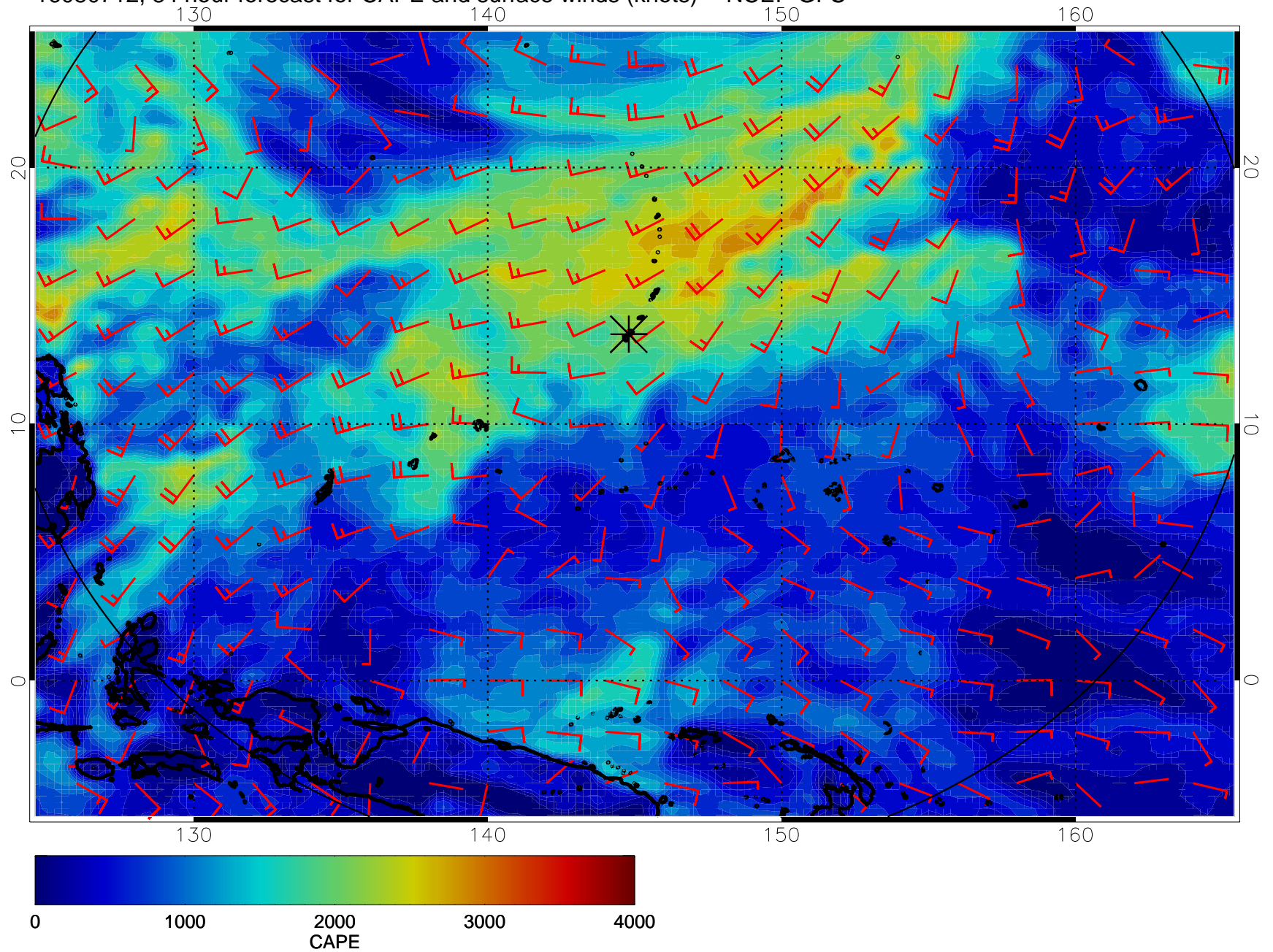
16080700, 72 hour forecast for CAPE and surface winds (knots) -- NCEP GFS



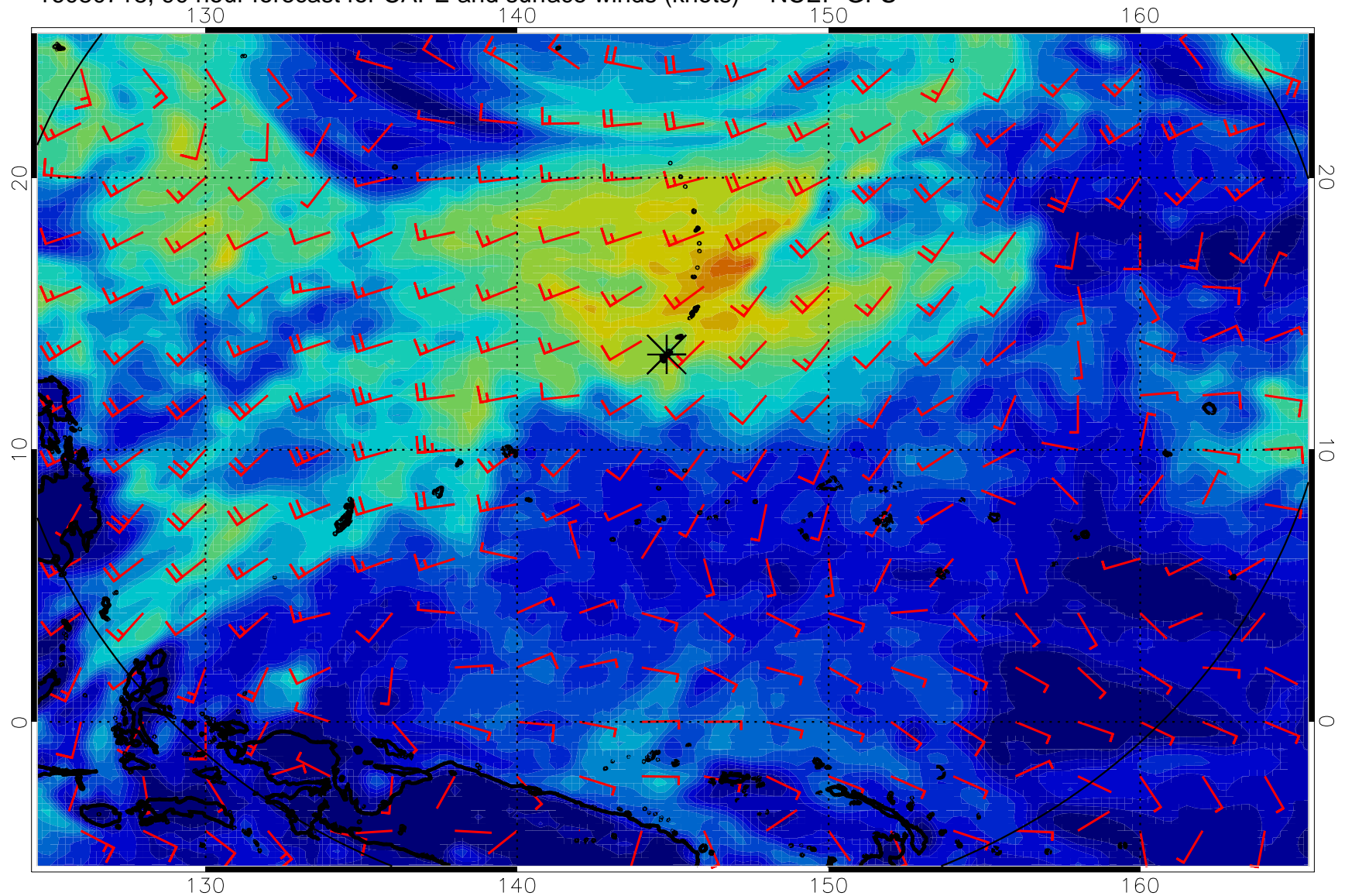
16080706, 78 hour forecast for CAPE and surface winds (knots) -- NCEP GFS



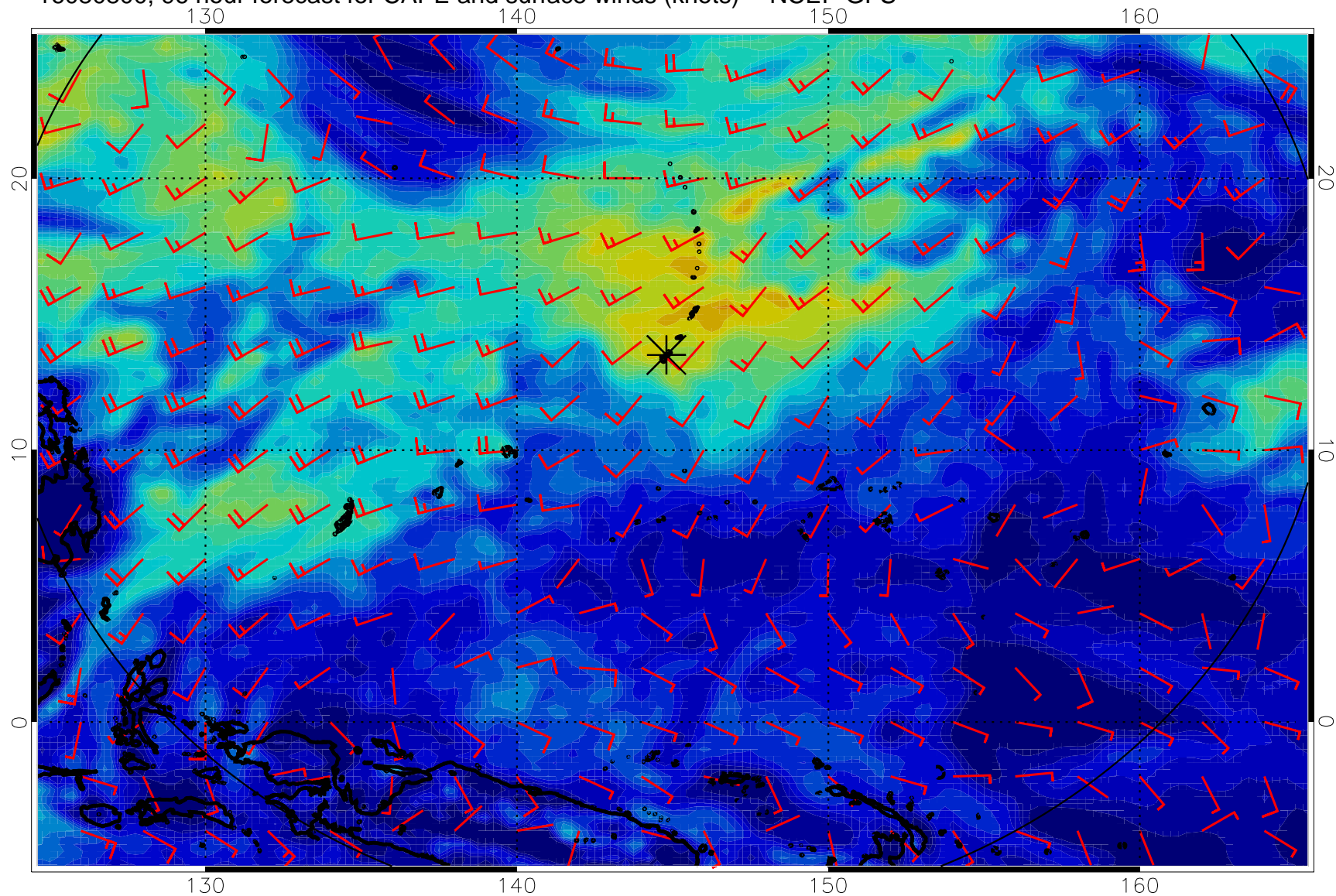
16080712, 84 hour forecast for CAPE and surface winds (knots) -- NCEP GFS



16080718, 90 hour forecast for CAPE and surface winds (knots) -- NCEP GFS

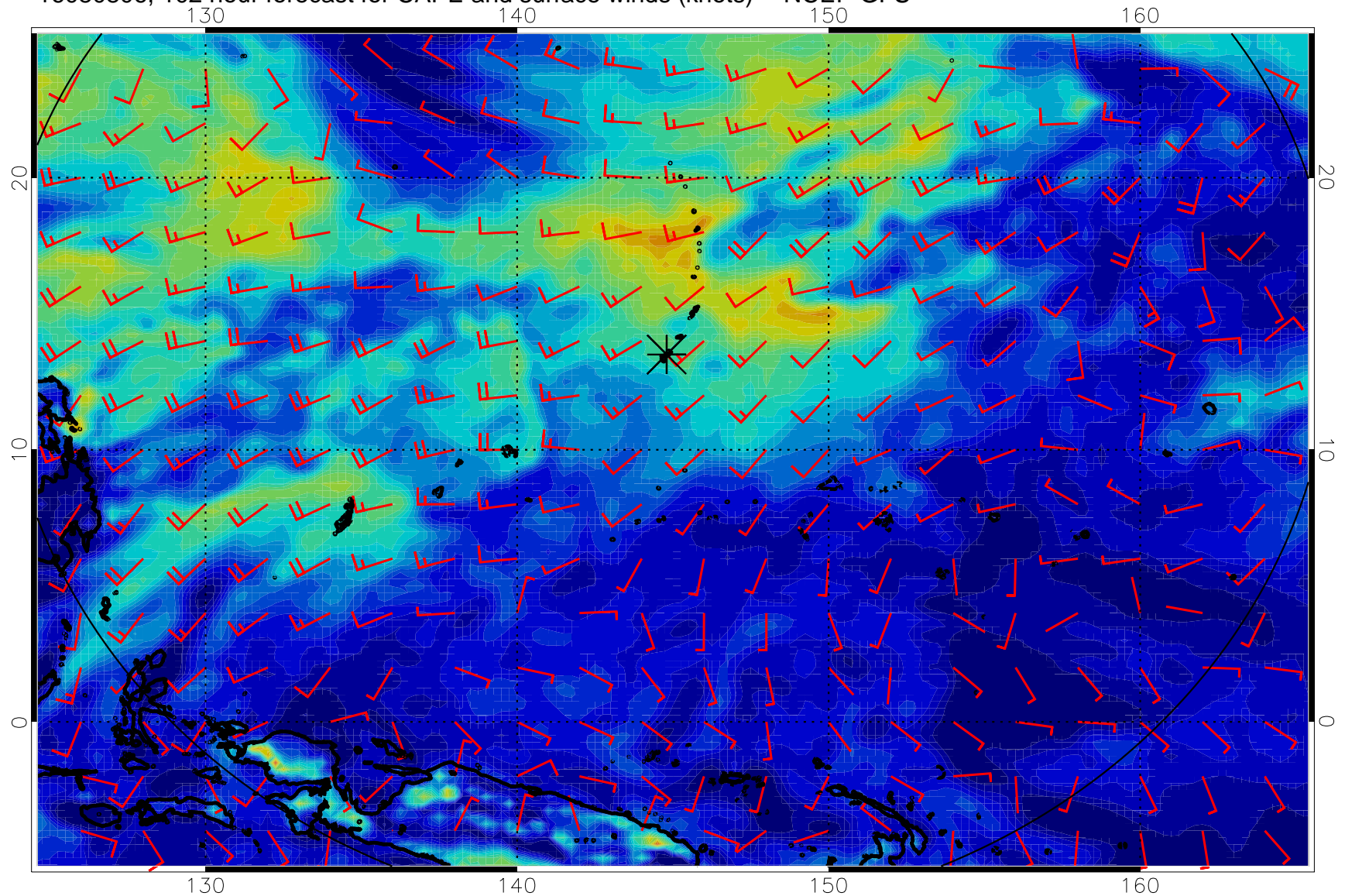


16080800, 96 hour forecast for CAPE and surface winds (knots) -- NCEP GFS

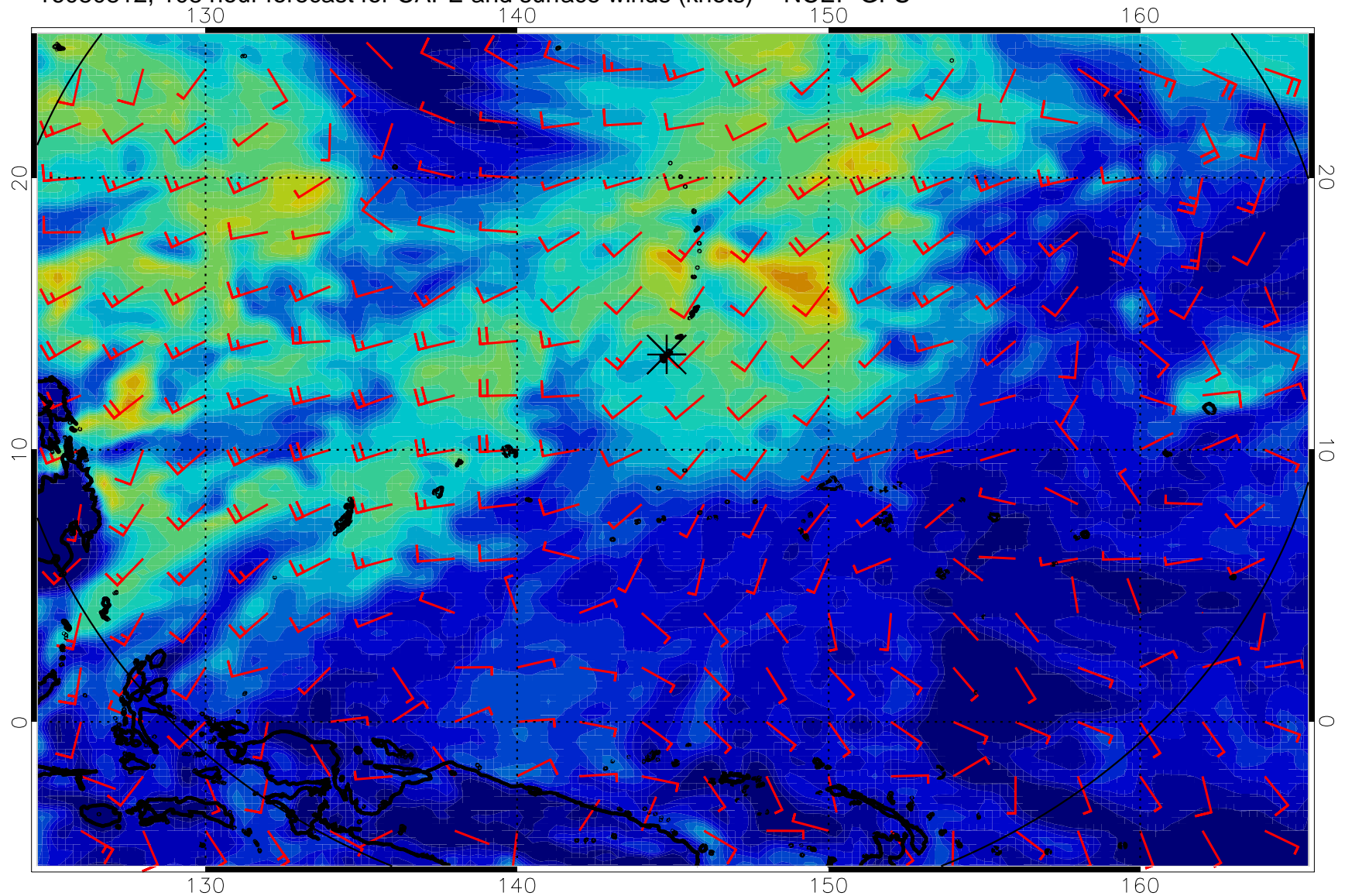




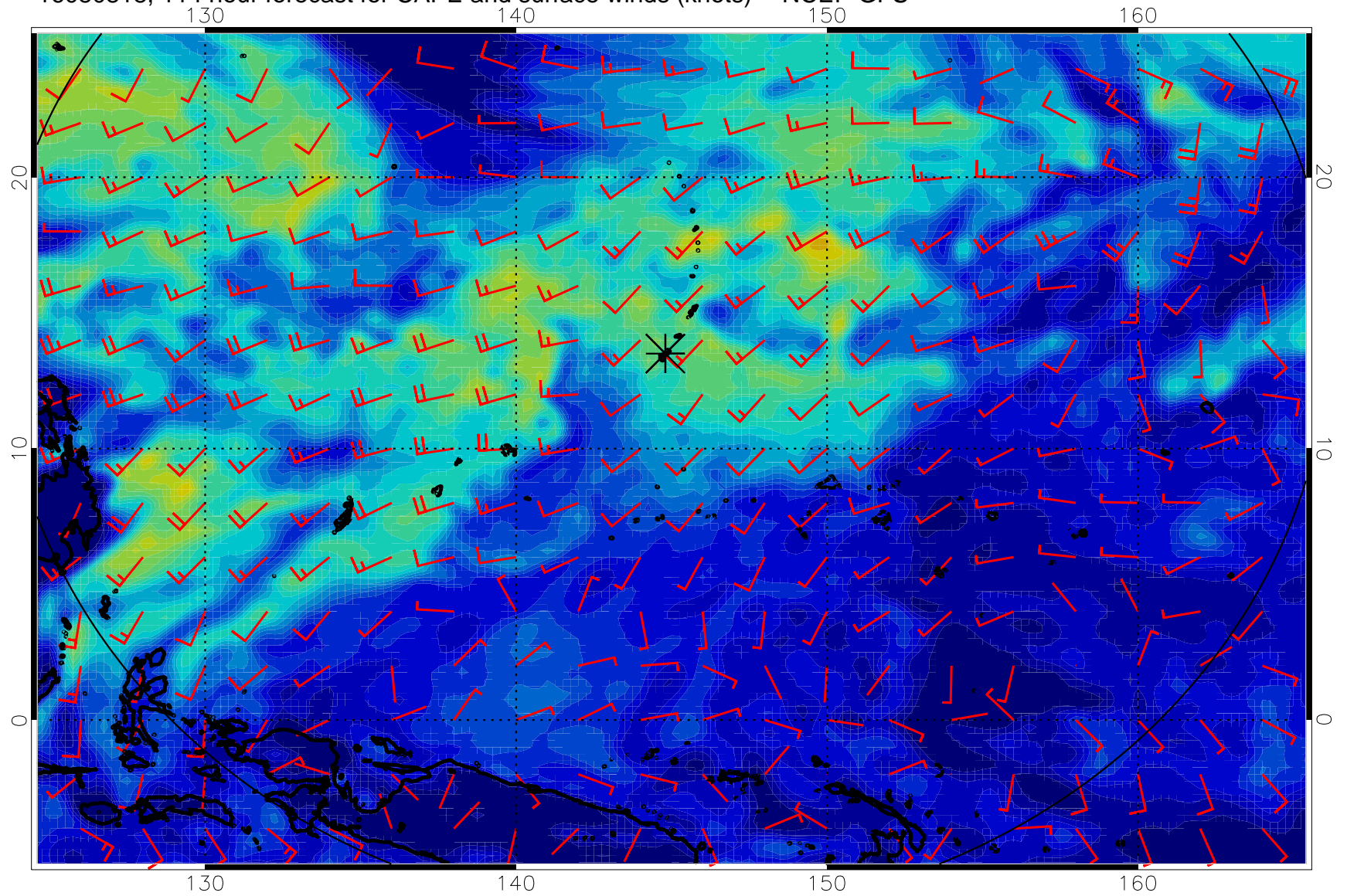
16080806, 102 hour forecast for CAPE and surface winds (knots) -- NCEP GFS



16080812, 108 hour forecast for CAPE and surface winds (knots) -- NCEP GFS



16080818, 114 hour forecast for CAPE and surface winds (knots) -- NCEP GFS



16080900, 120 hour forecast for CAPE and surface winds (knots) -- NCEP GFS

