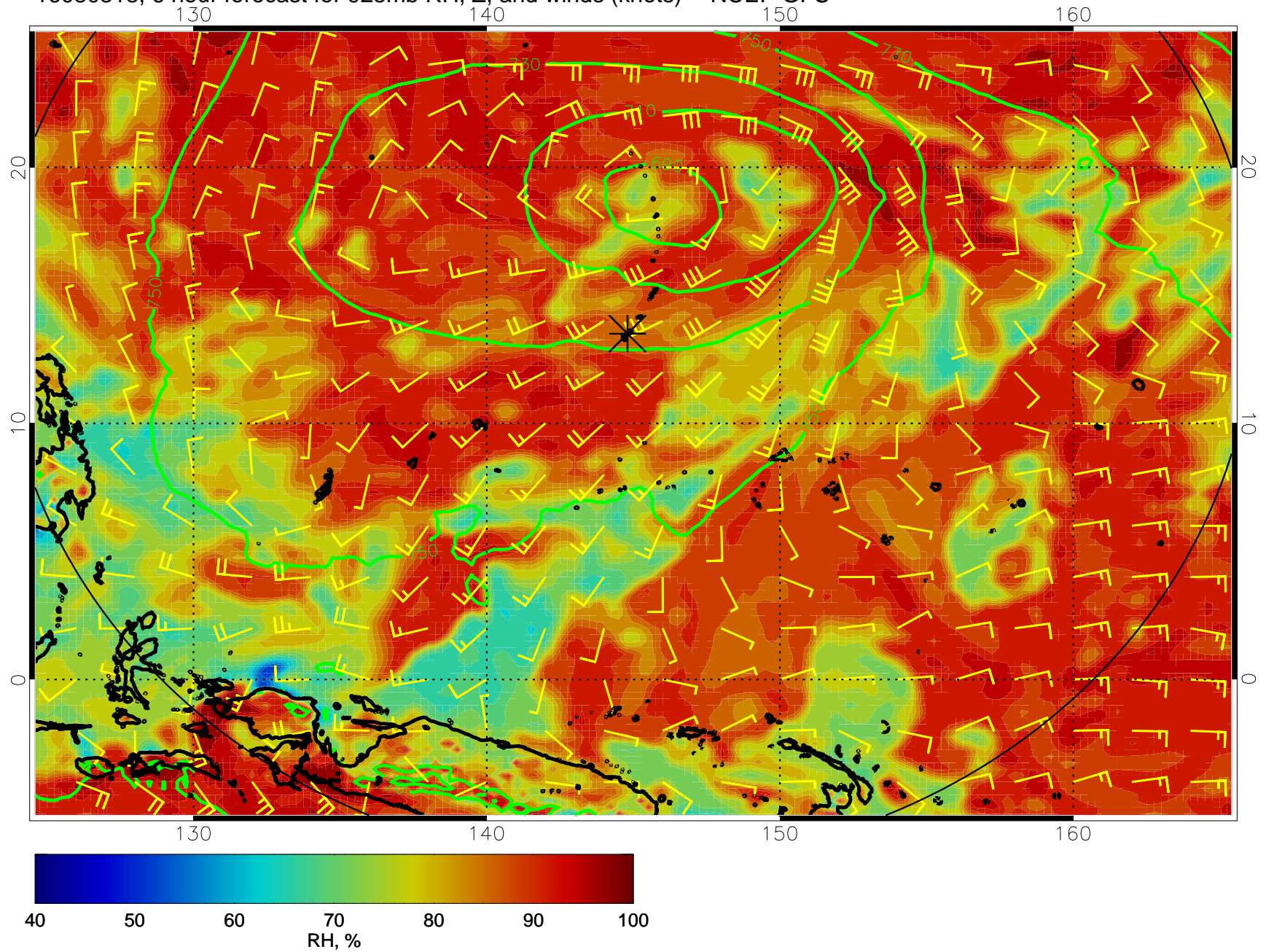
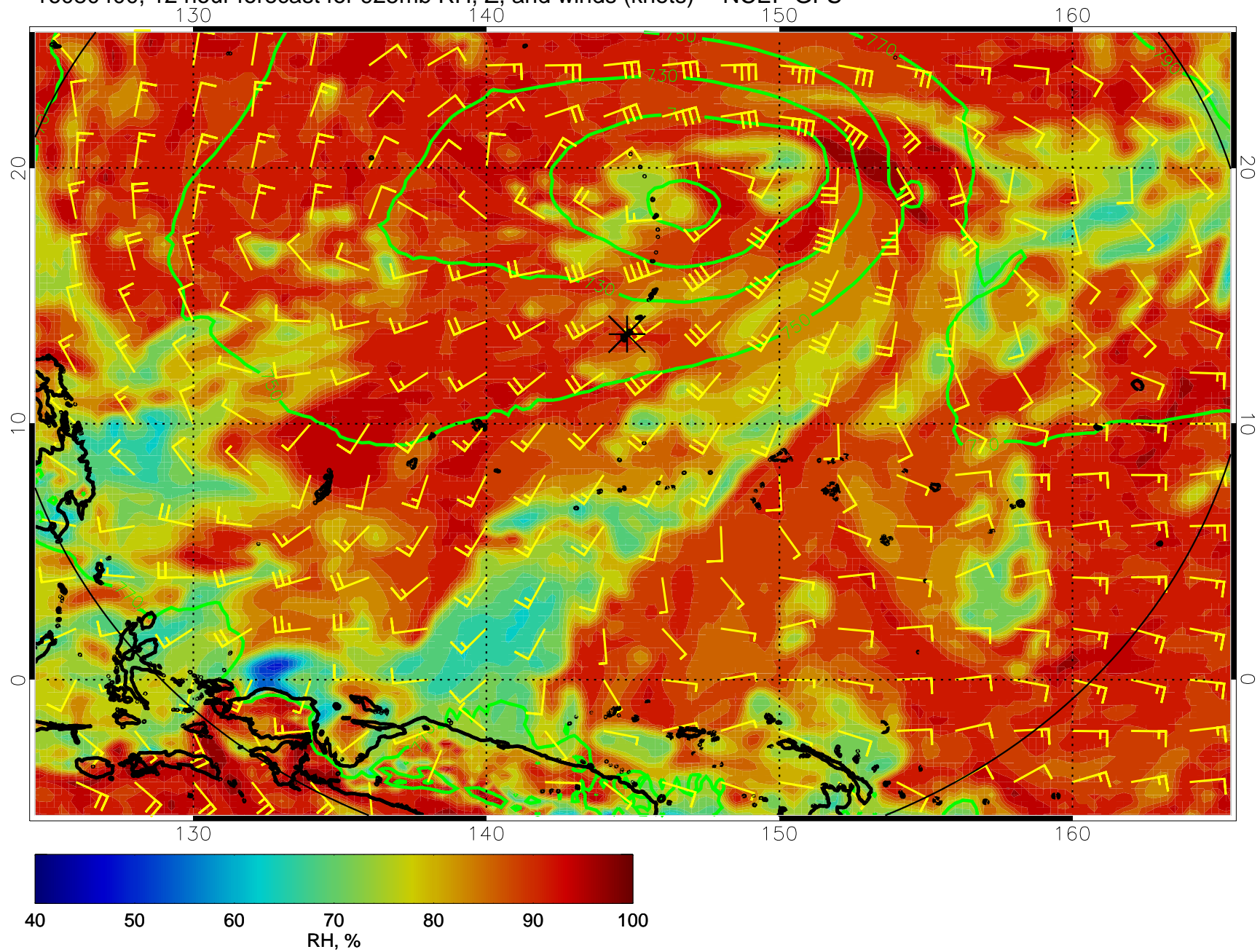


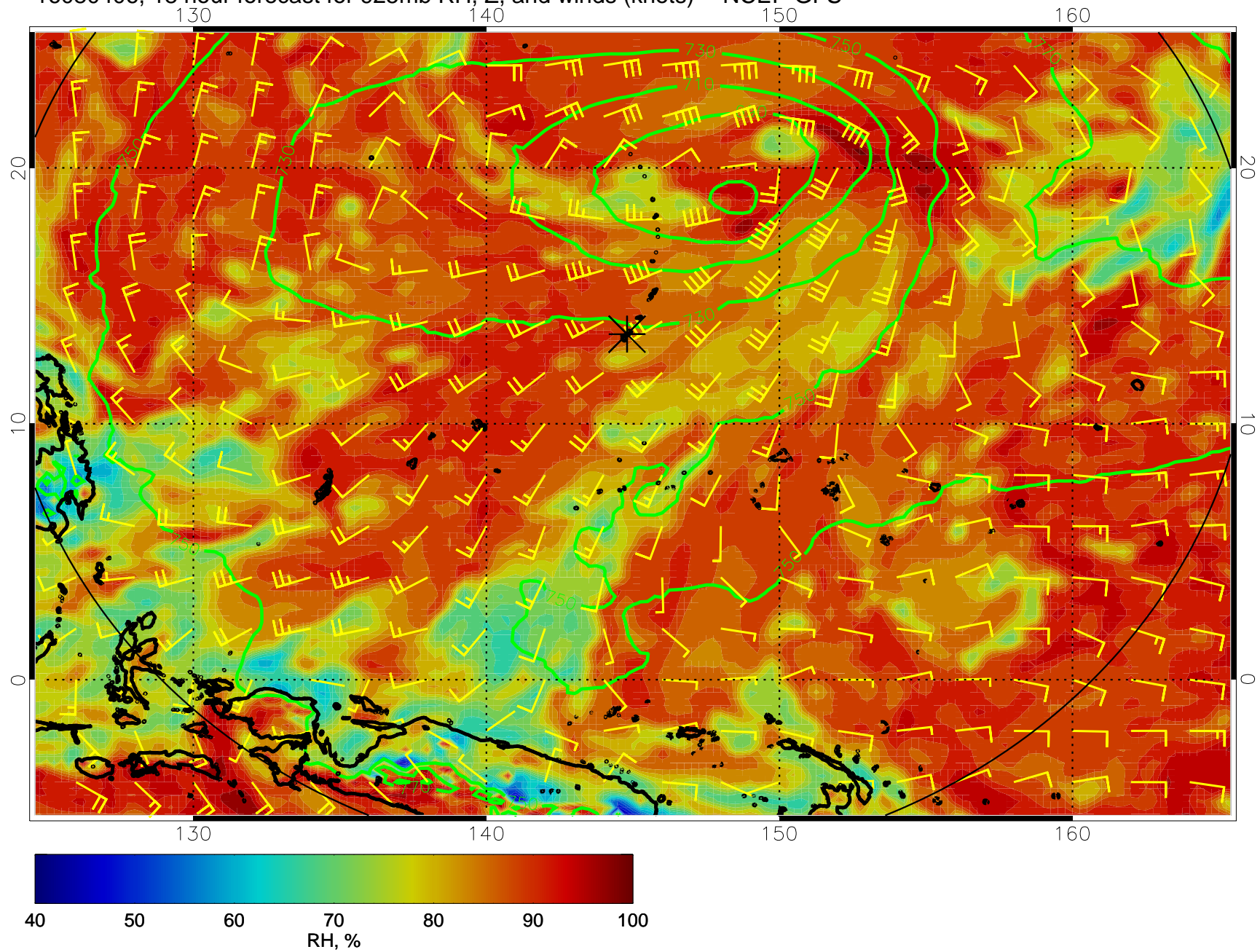
16080318, 6 hour forecast for 925mb RH, Z, and winds (knots) -- NCEP GFS



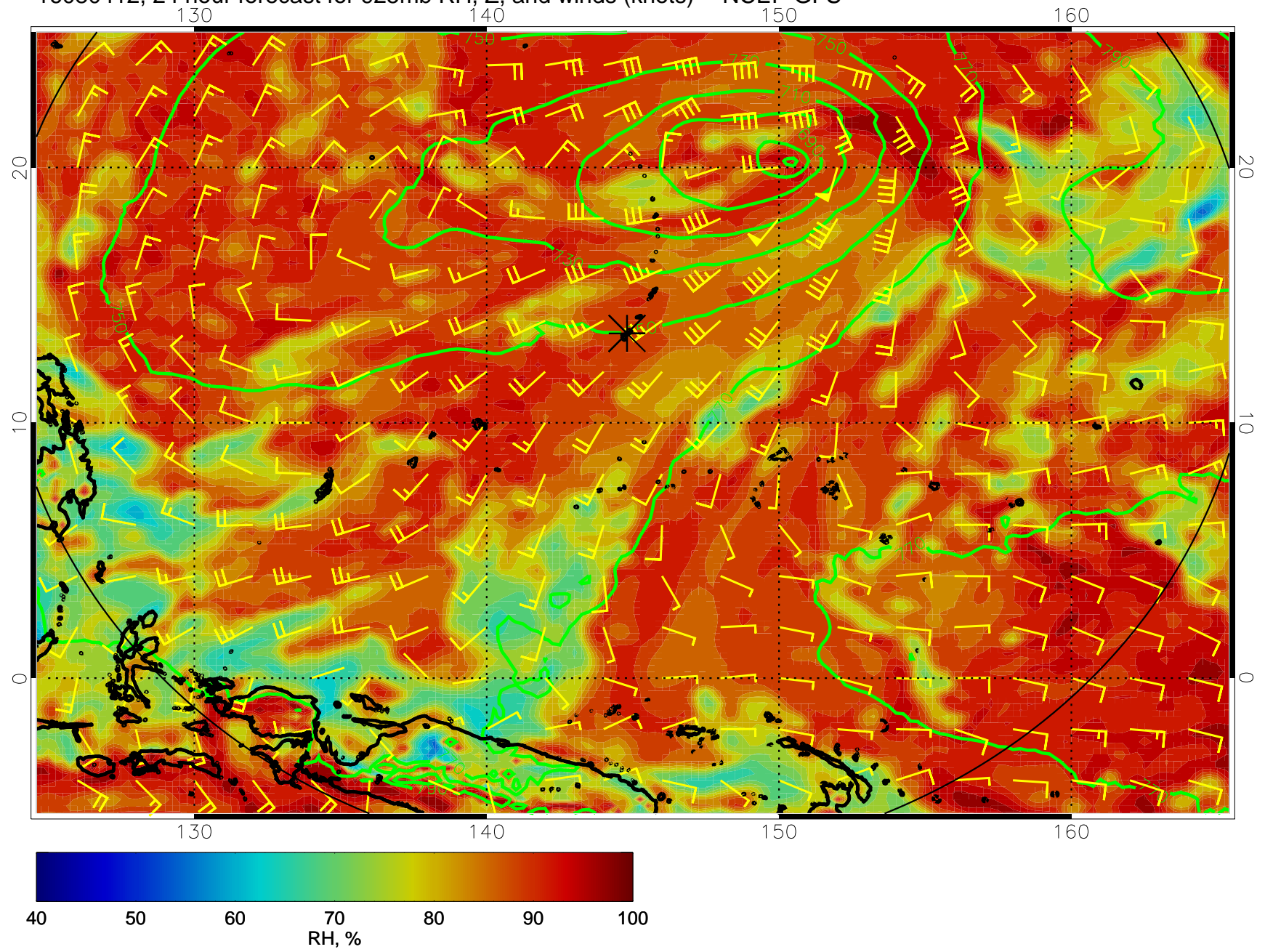
16080400, 12 hour forecast for 925mb RH, Z, and winds (knots) -- NCEP GFS



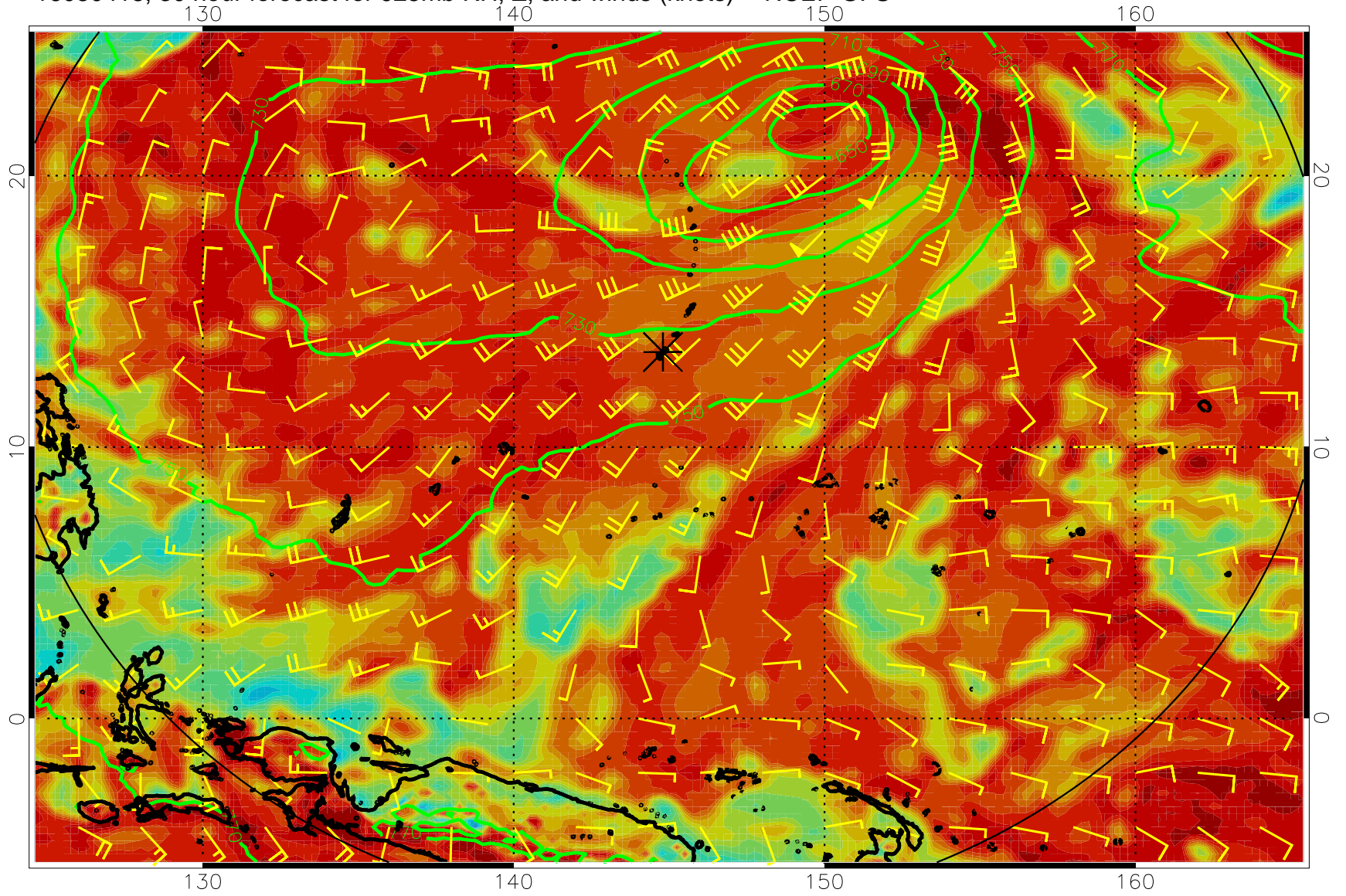
16080406, 18 hour forecast for 925mb RH, Z, and winds (knots) -- NCEP GFS



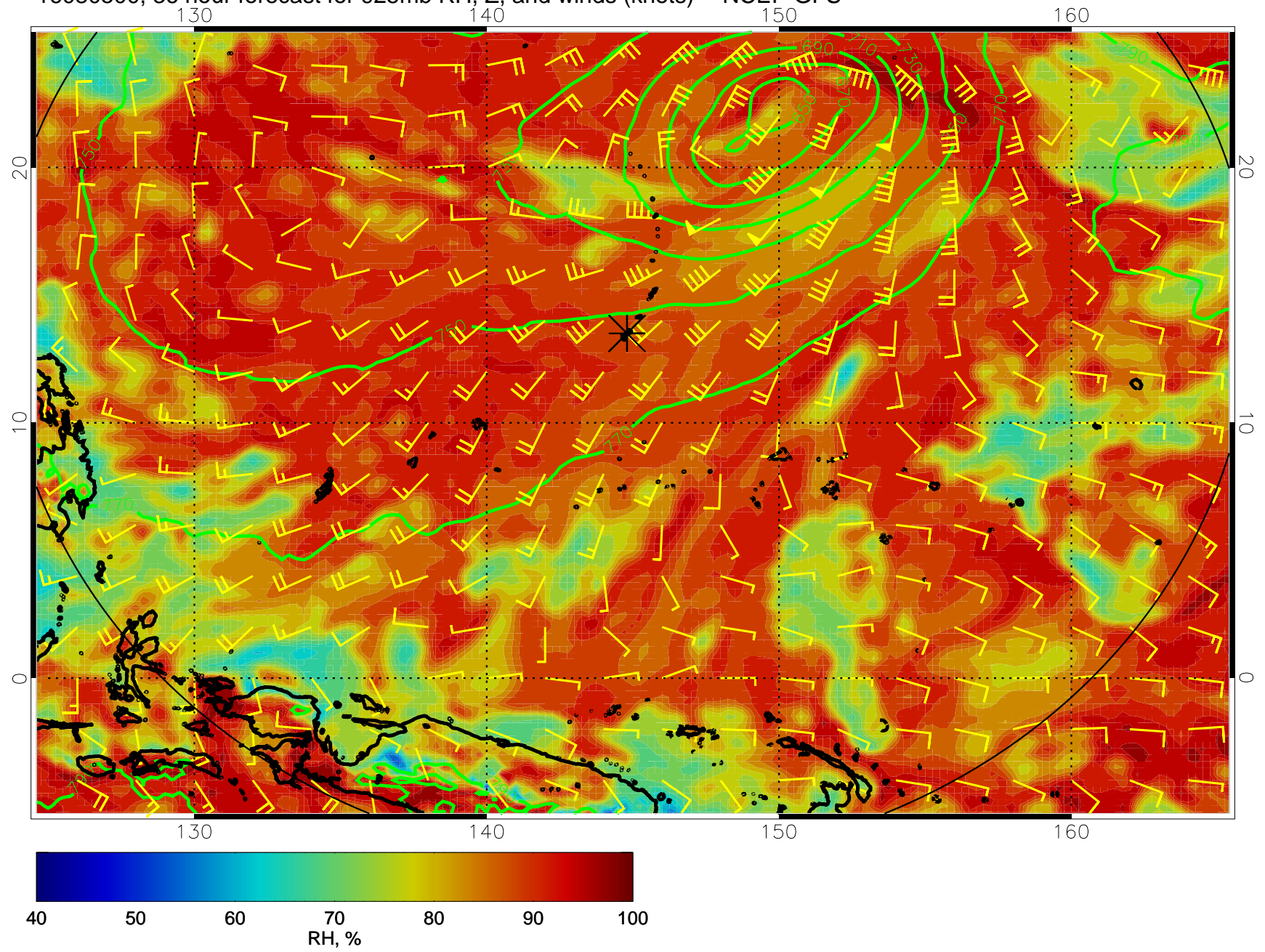
16080412, 24 hour forecast for 925mb RH, Z, and winds (knots) -- NCEP GFS



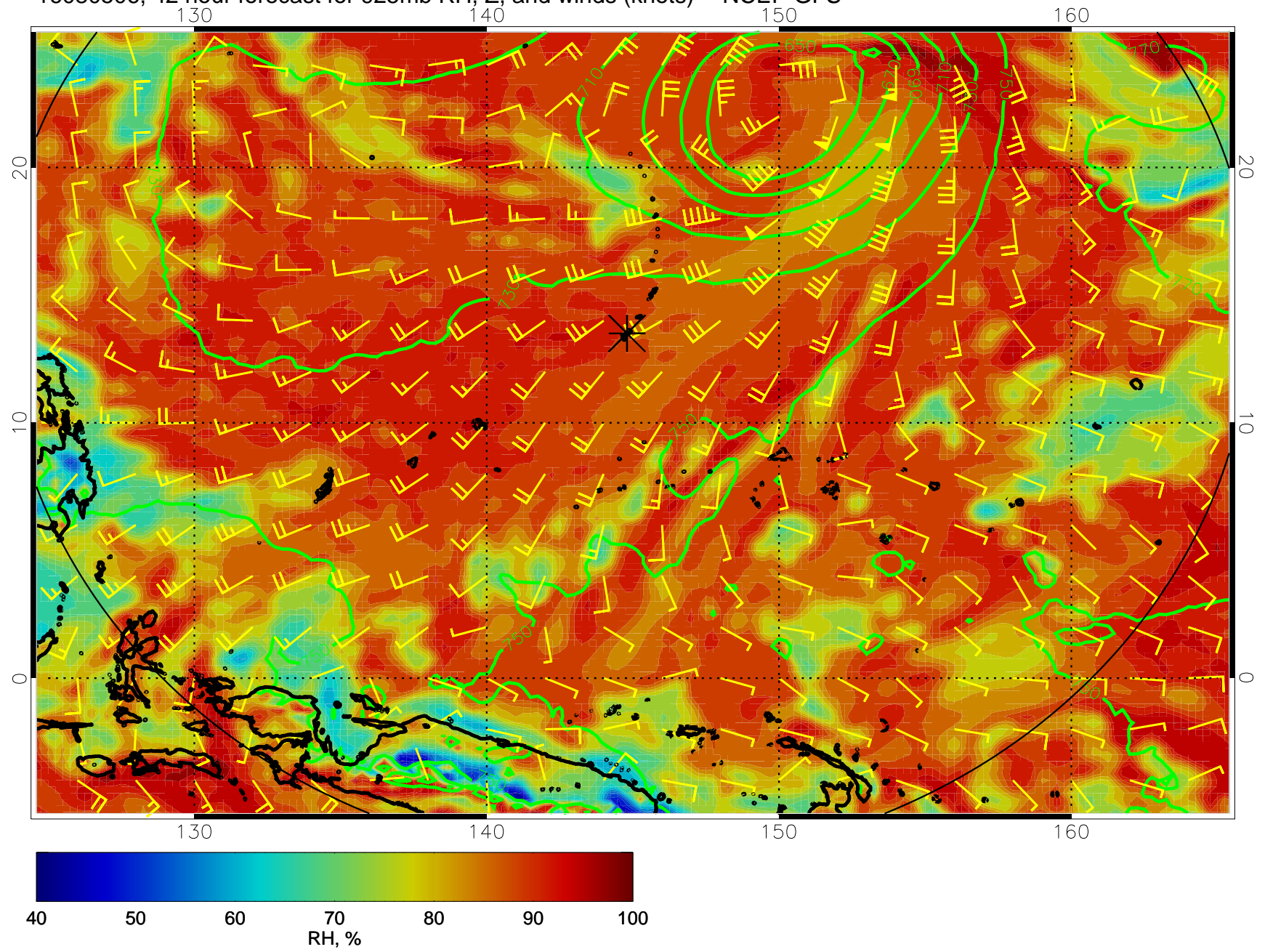
16080418, 30 hour forecast for 925mb RH, Z, and winds (knots) -- NCEP GFS



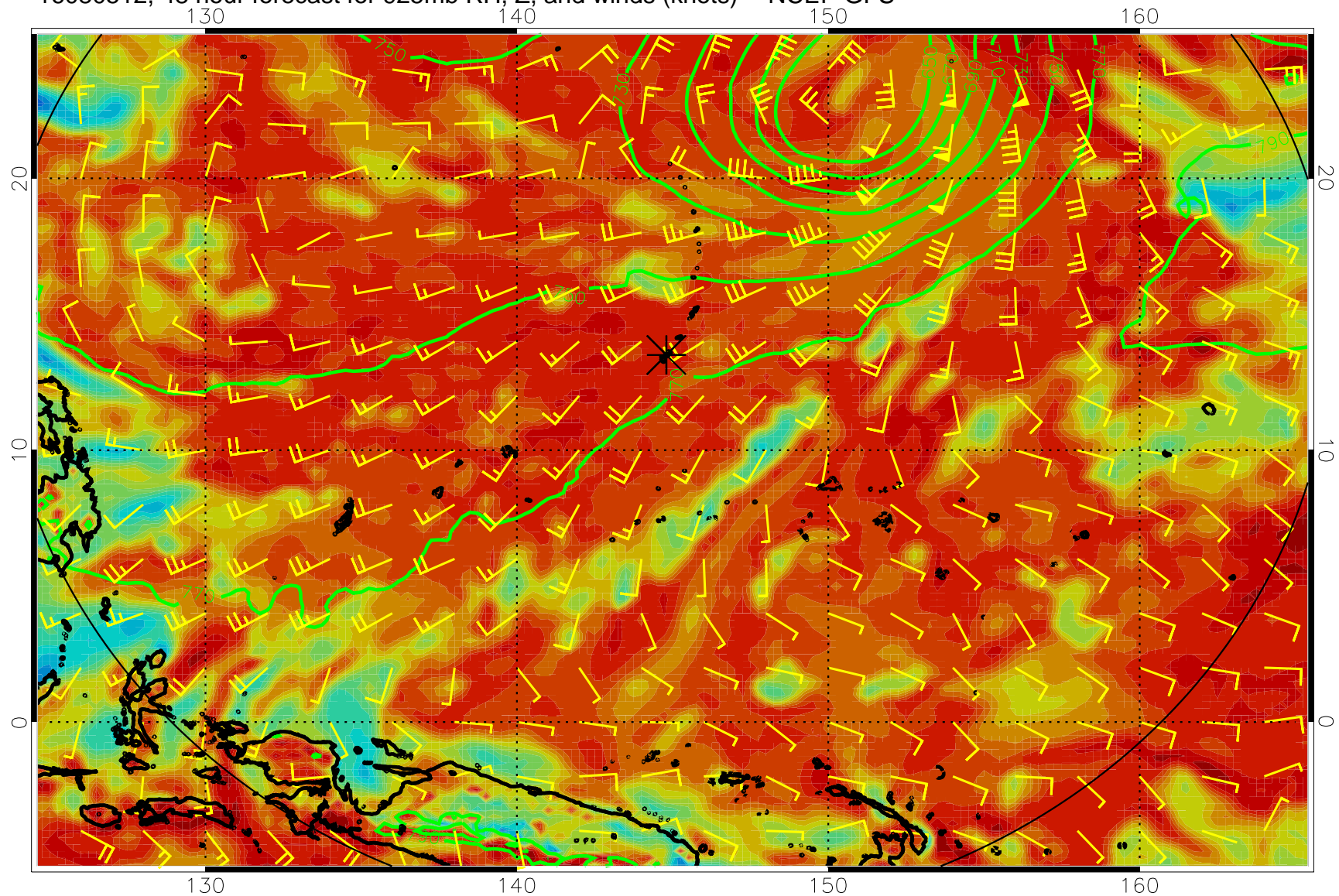
16080500, 36 hour forecast for 925mb RH, Z, and winds (knots) -- NCEP GFS



16080506, 42 hour forecast for 925mb RH, Z, and winds (knots) -- NCEP GFS

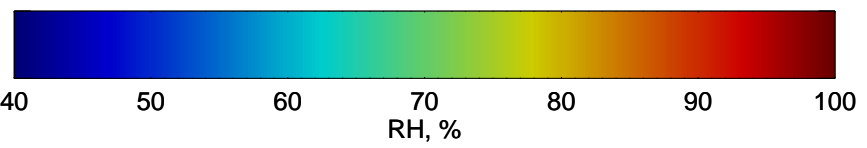
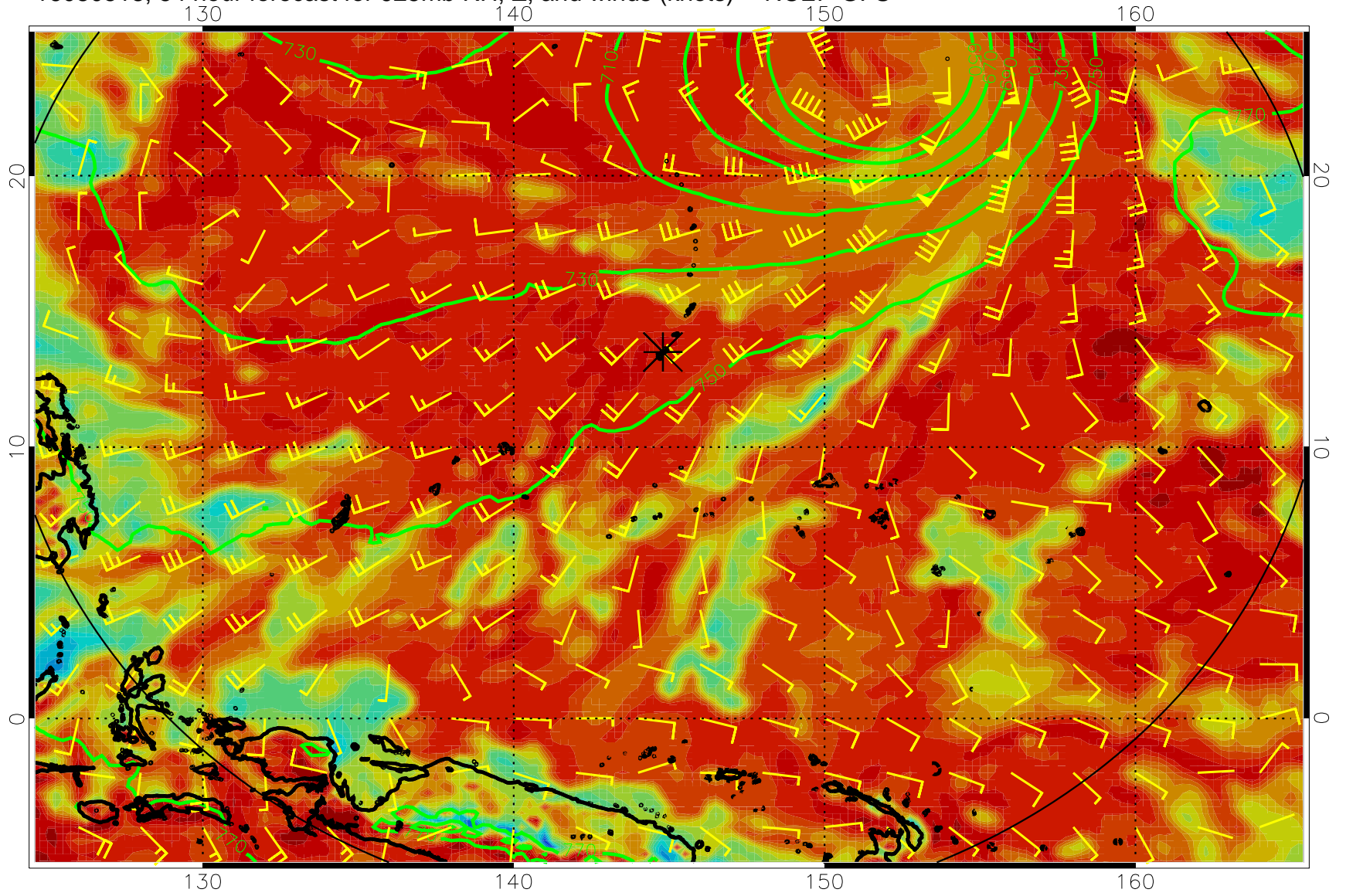


16080512, 48 hour forecast for 925mb RH, Z, and winds (knots) -- NCEP GFS

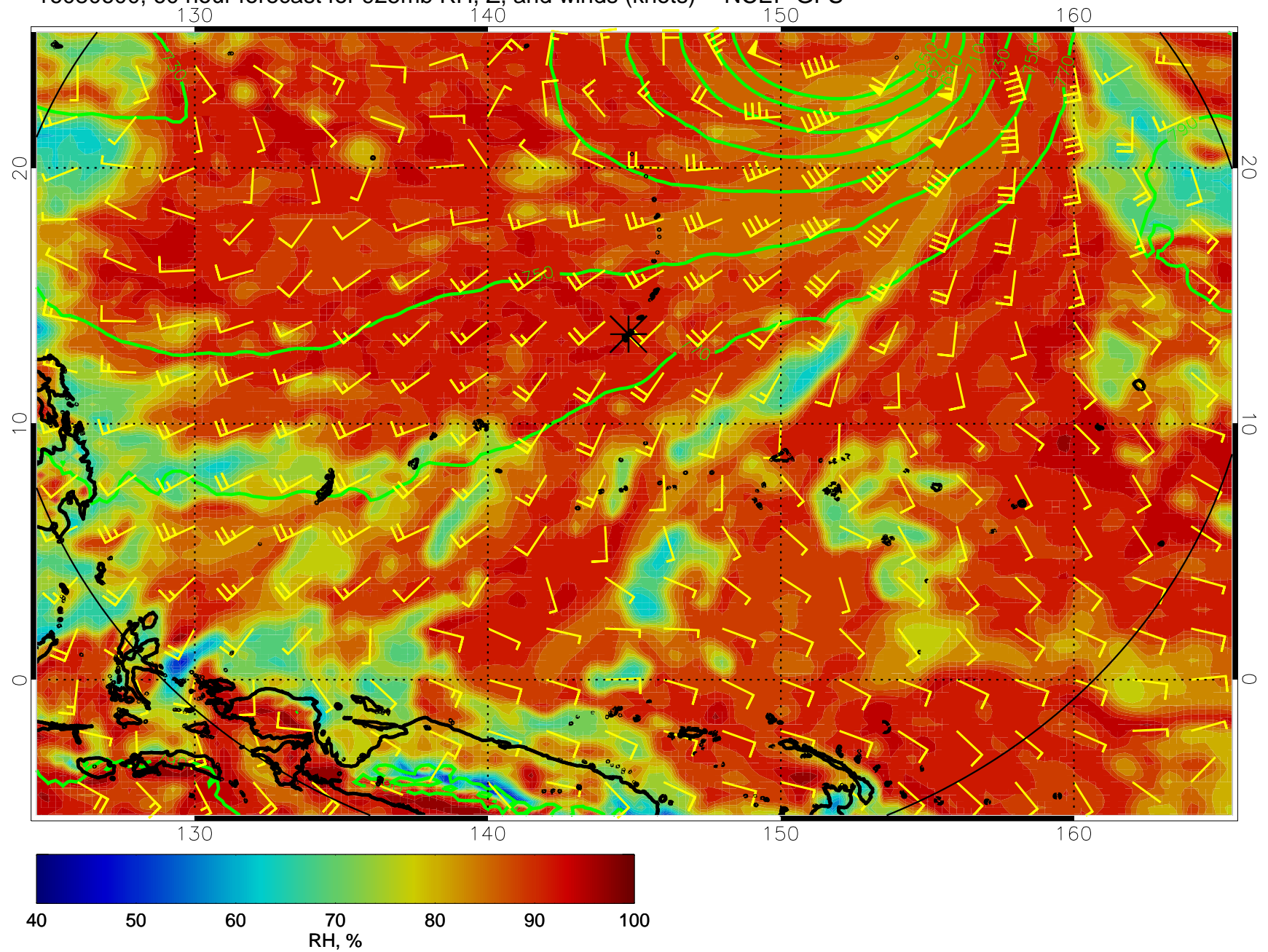




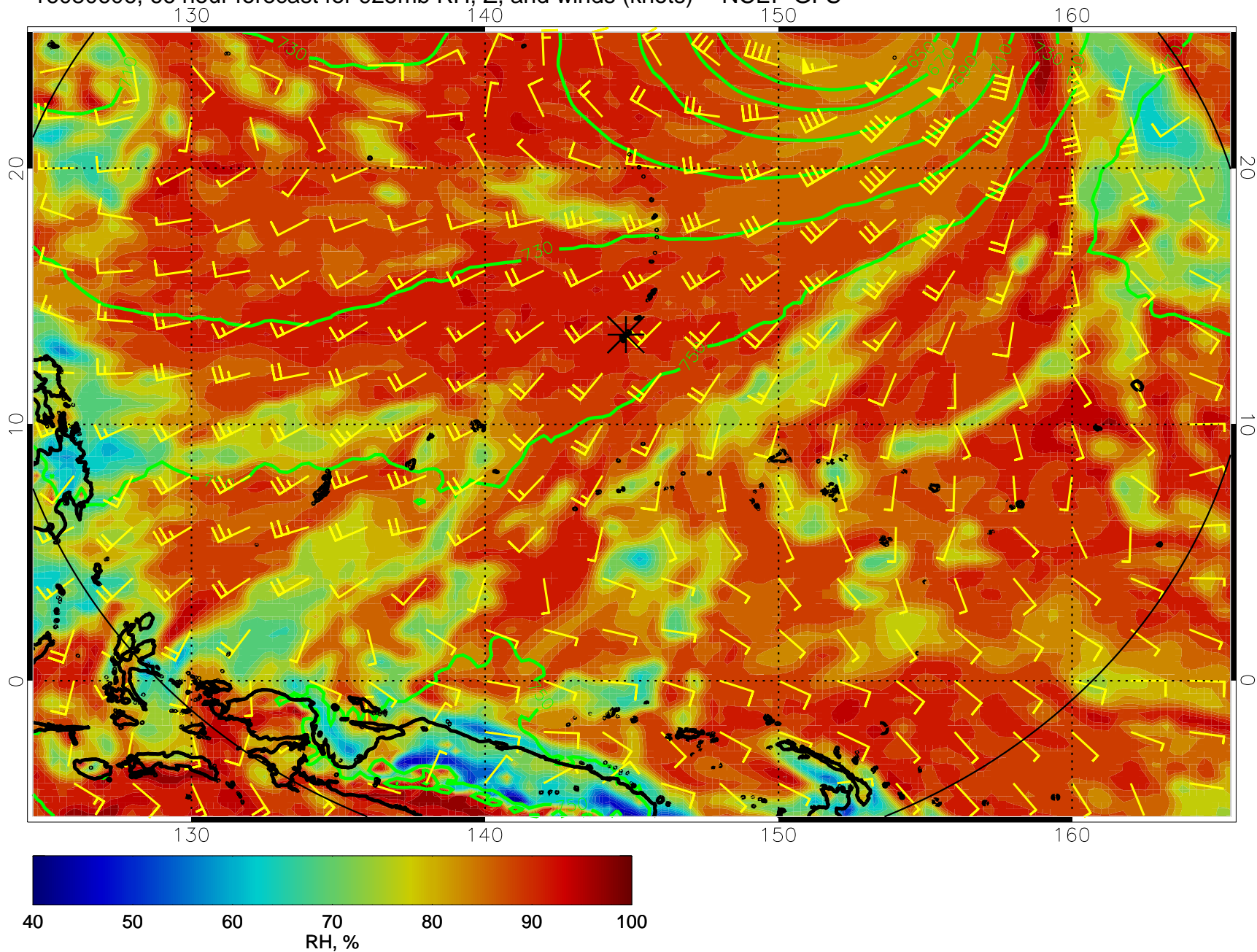
16080518, 54 hour forecast for 925mb RH, Z, and winds (knots) -- NCEP GFS



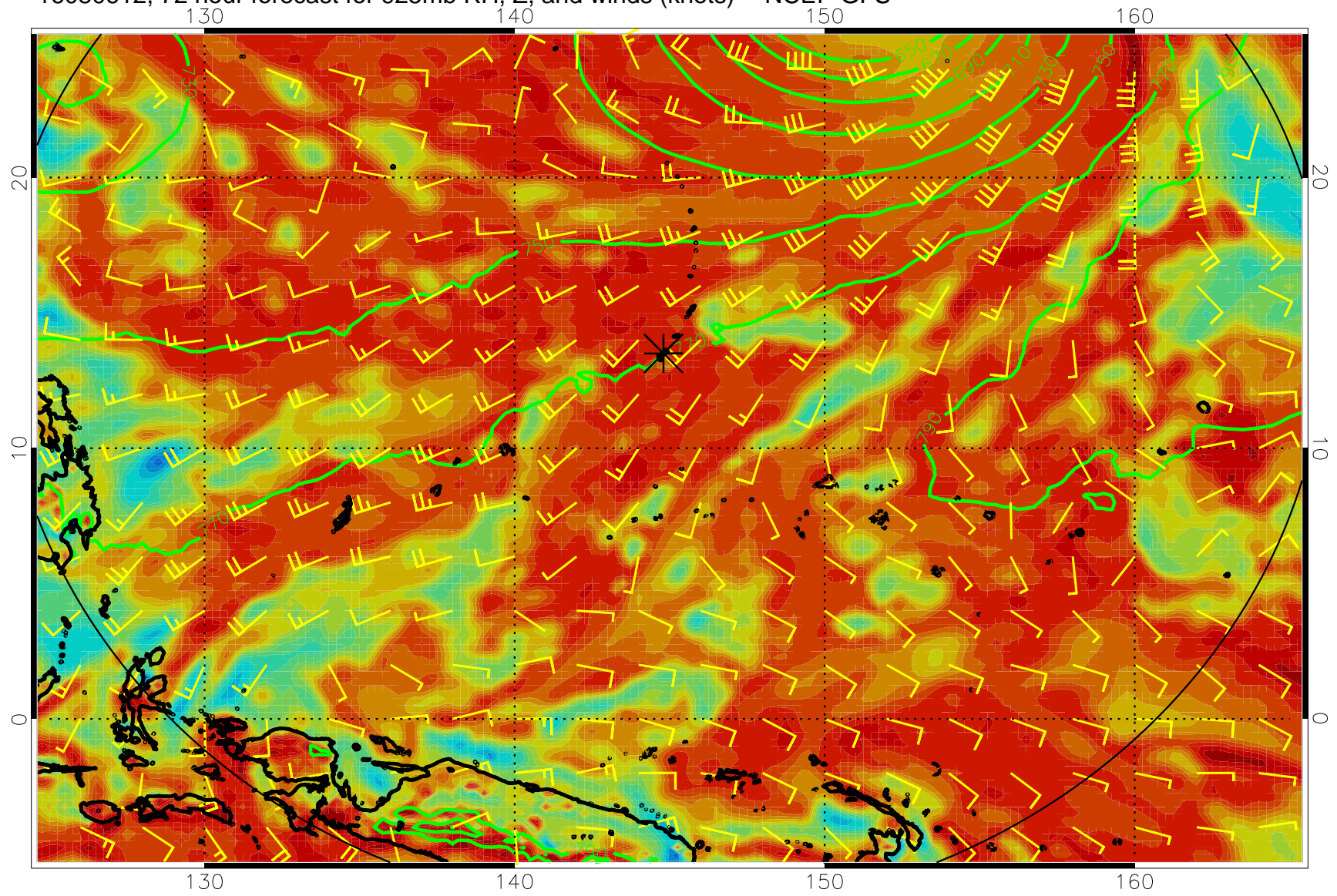
16080600, 60 hour forecast for 925mb RH, Z, and winds (knots) -- NCEP GFS



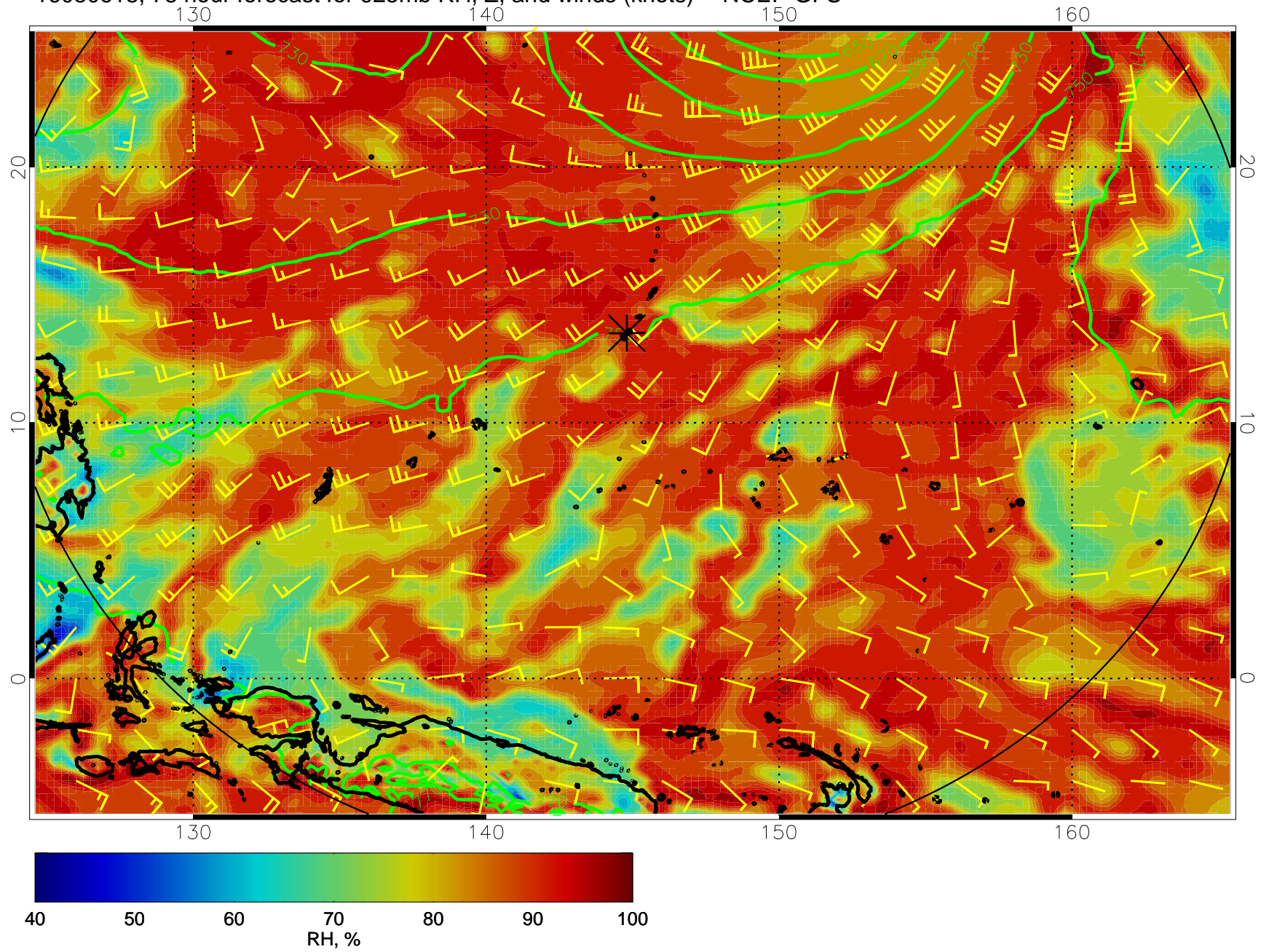
16080606, 66 hour forecast for 925mb RH, Z, and winds (knots) -- NCEP GFS



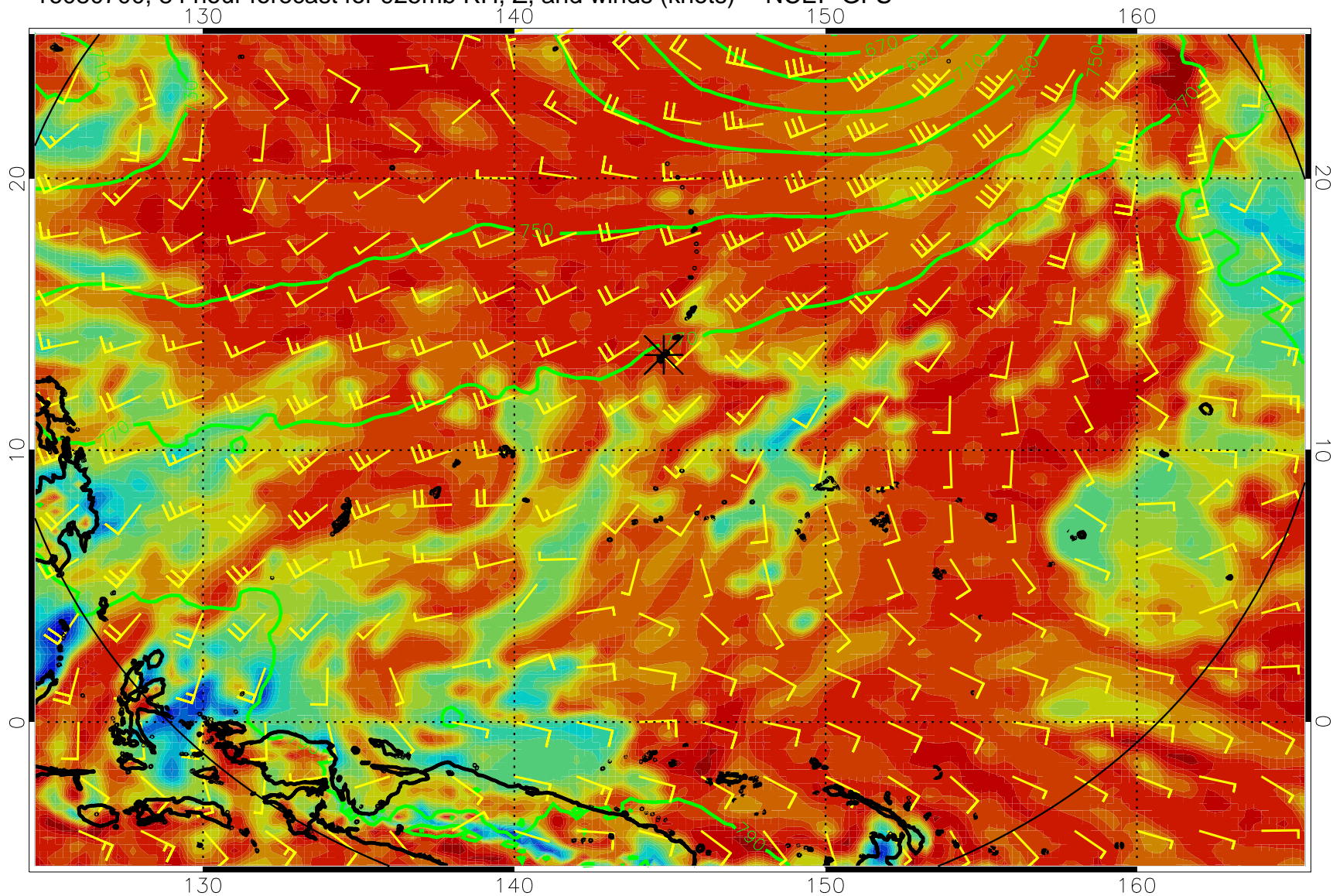
16080612, 72 hour forecast for 925mb RH, Z, and winds (knots) -- NCEP GFS



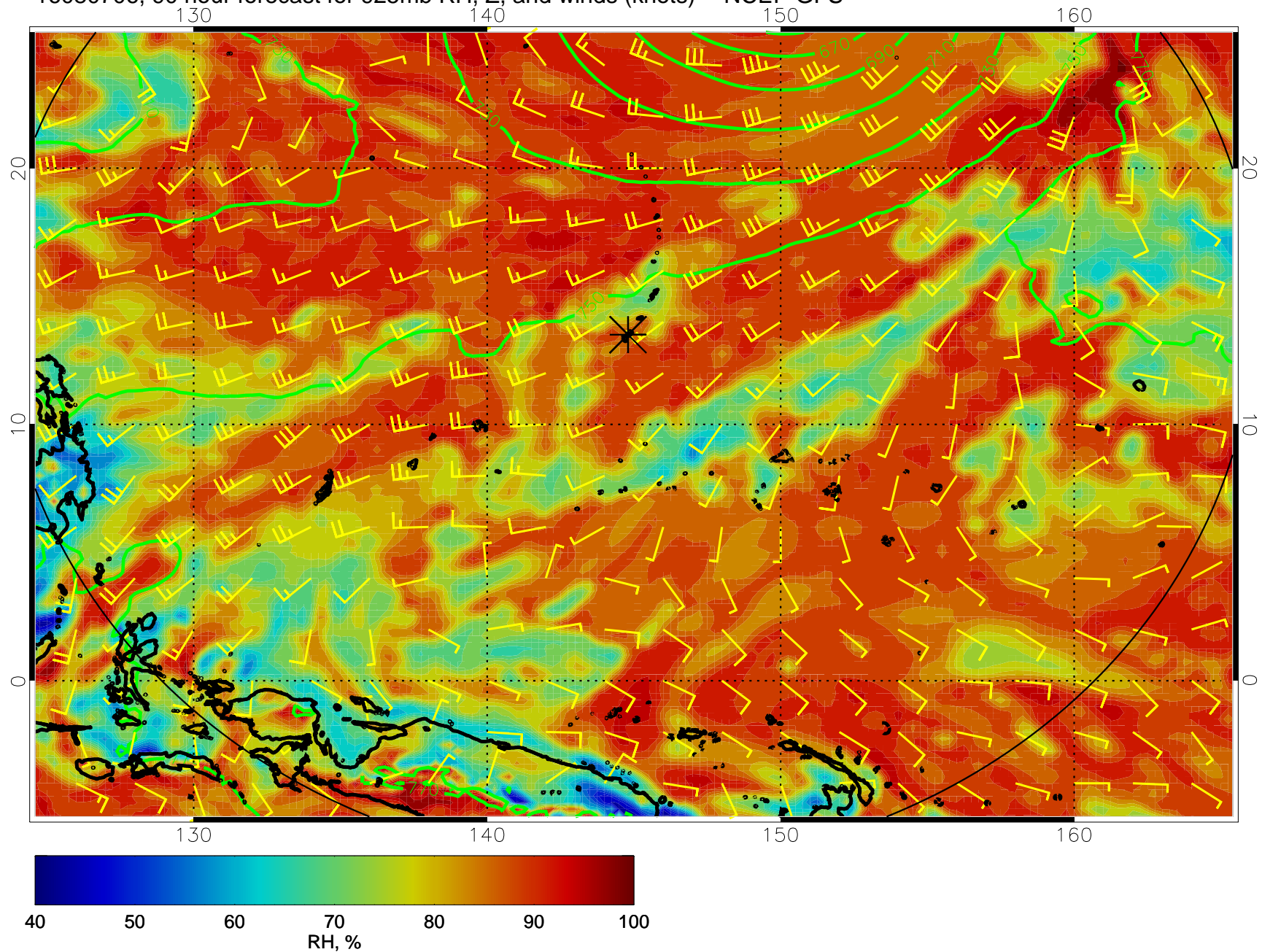
16080618, 78 hour forecast for 925mb RH, Z, and winds (knots) -- NCEP GFS



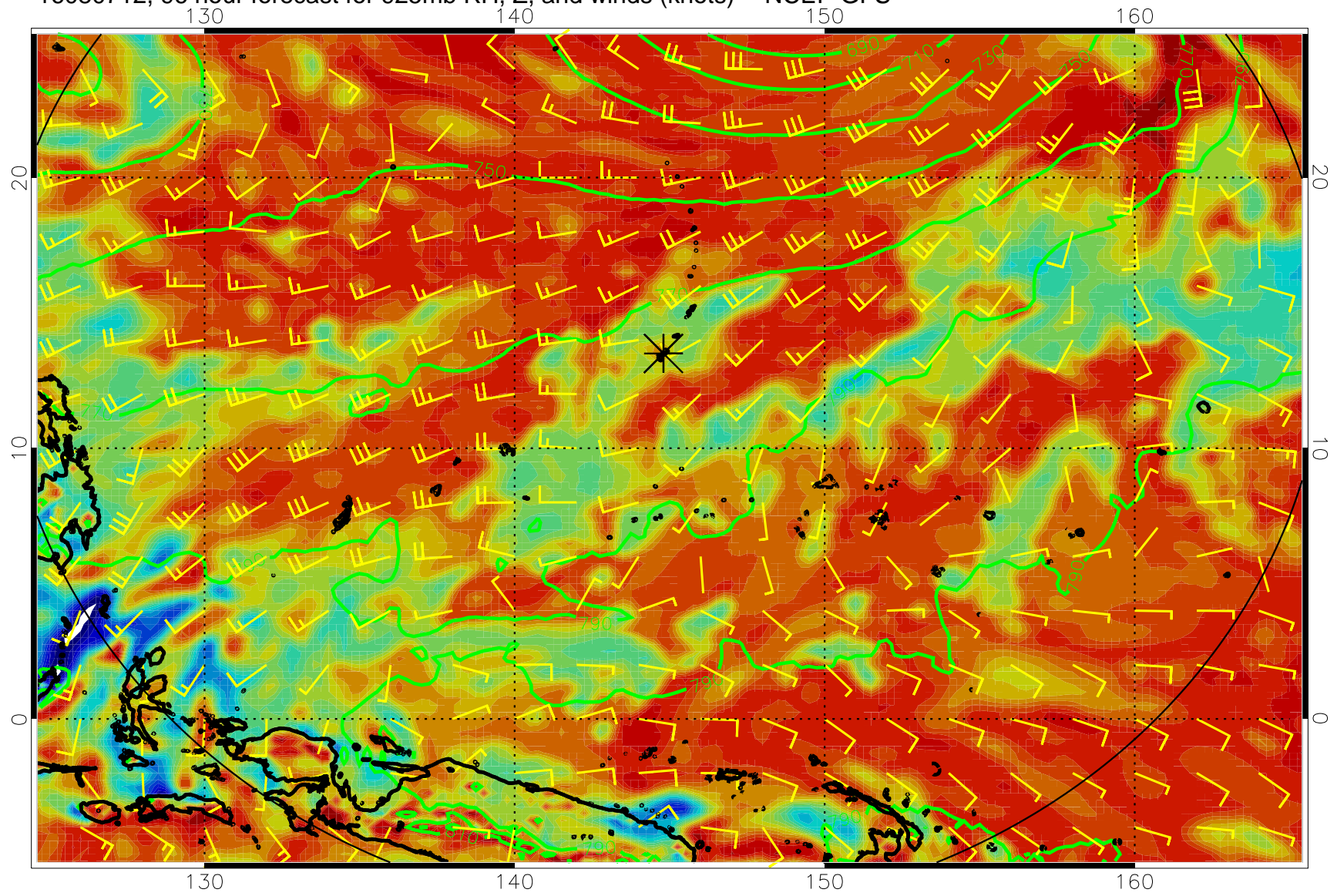
16080700, 84 hour forecast for 925mb RH, Z, and winds (knots) -- NCEP GFS



16080706, 90 hour forecast for 925mb RH, Z, and winds (knots) -- NCEP GFS

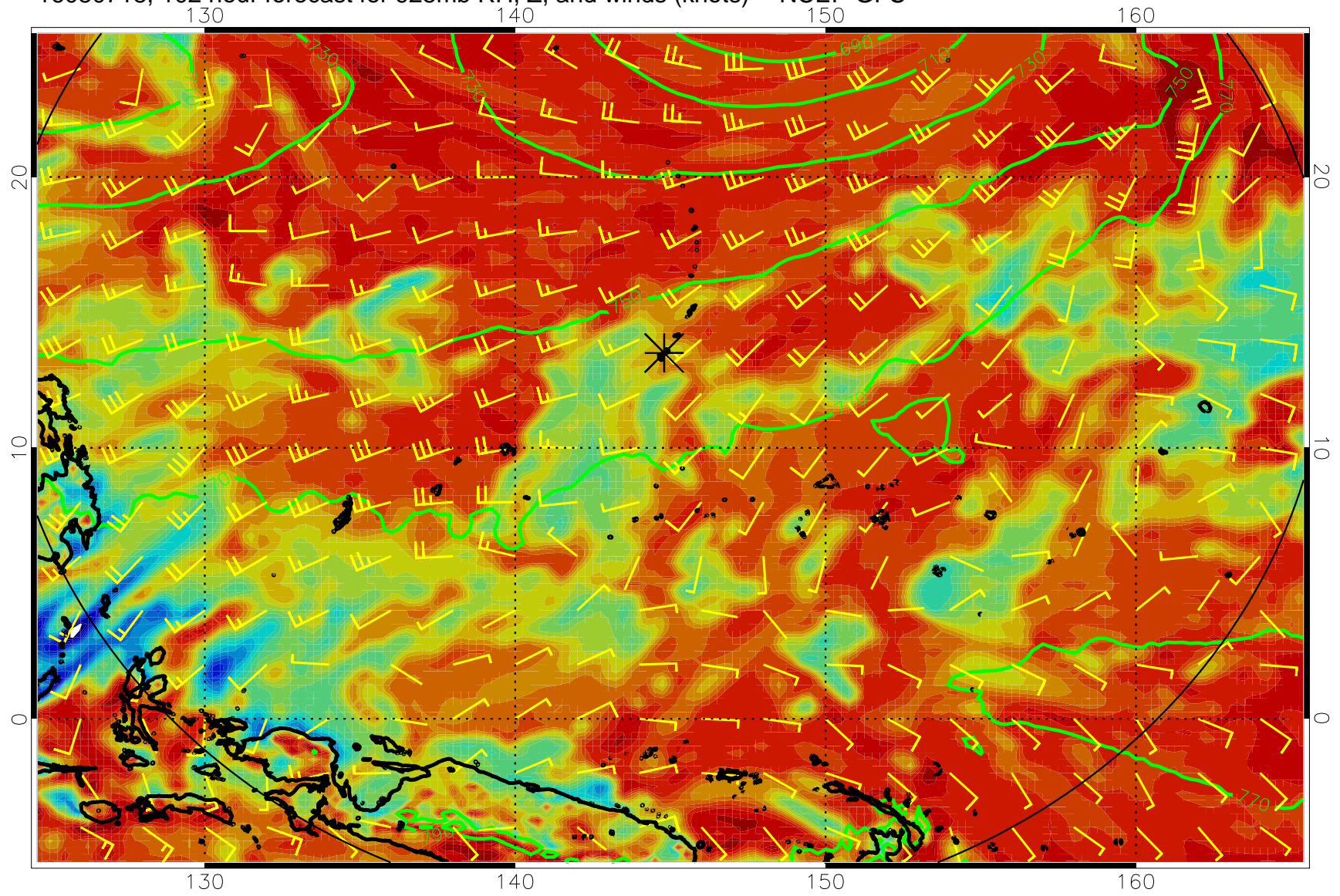


16080712, 96 hour forecast for 925mb RH, Z, and winds (knots) -- NCEP GFS

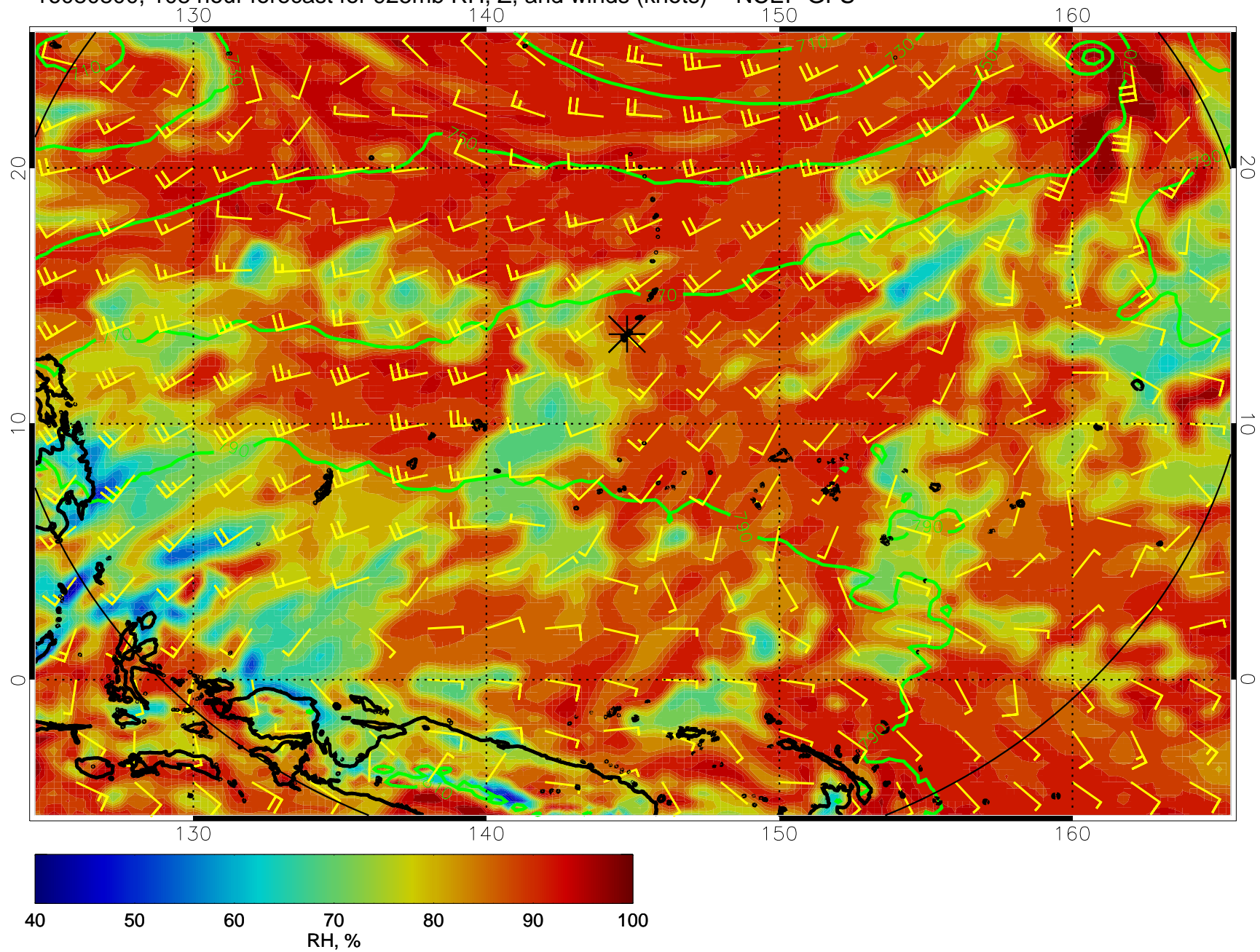




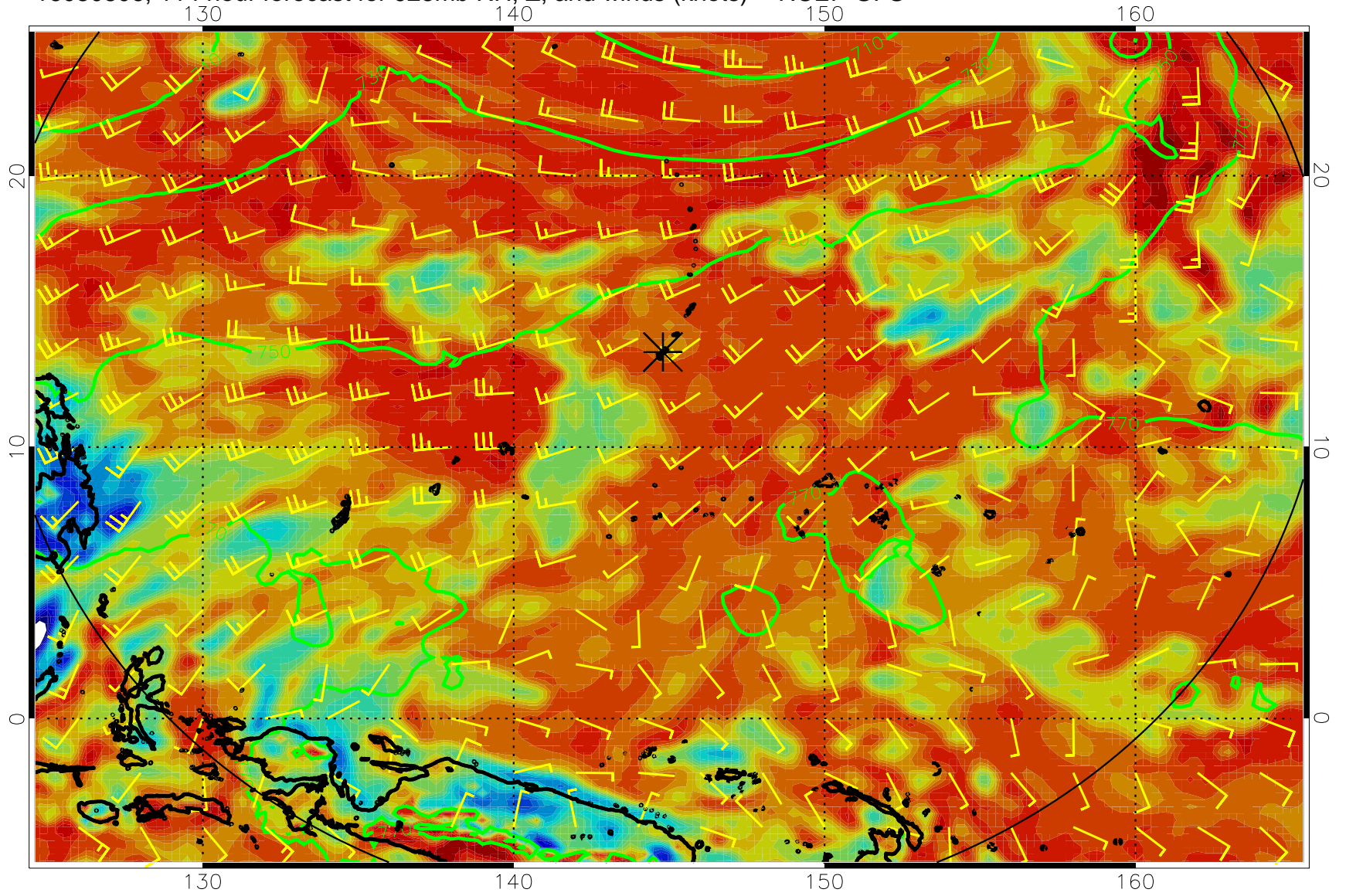
16080718, 102 hour forecast for 925mb RH, Z, and winds (knots) -- NCEP GFS



16080800, 108 hour forecast for 925mb RH, Z, and winds (knots) -- NCEP GFS



16080806, 114 hour forecast for 925mb RH, Z, and winds (knots) -- NCEP GFS



16080812, 120 hour forecast for 925mb RH, Z, and winds (knots) -- NCEP GFS

