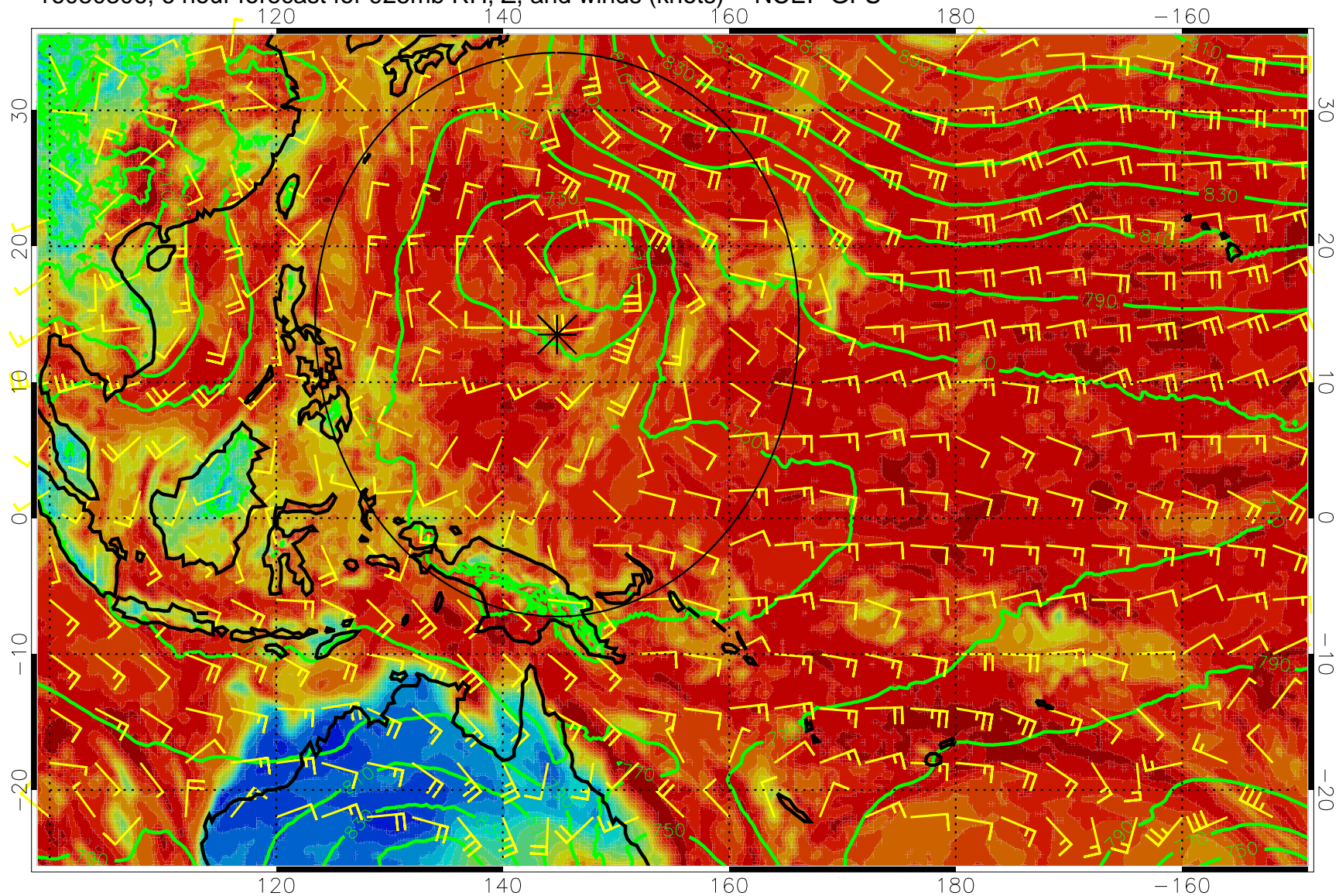
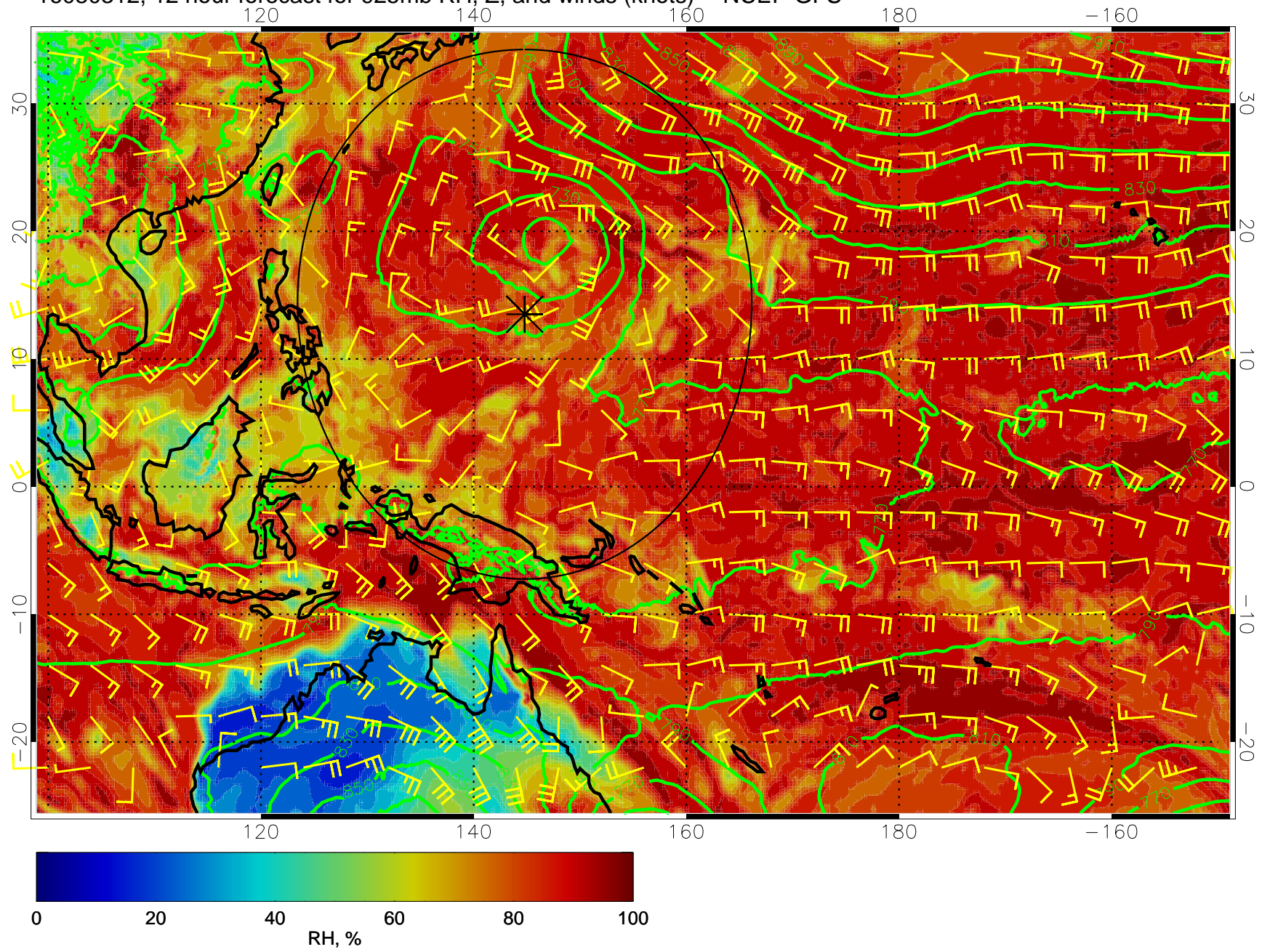


16080306, 6 hour forecast for 925mb RH, Z, and winds (knots) -- NCEP GFS

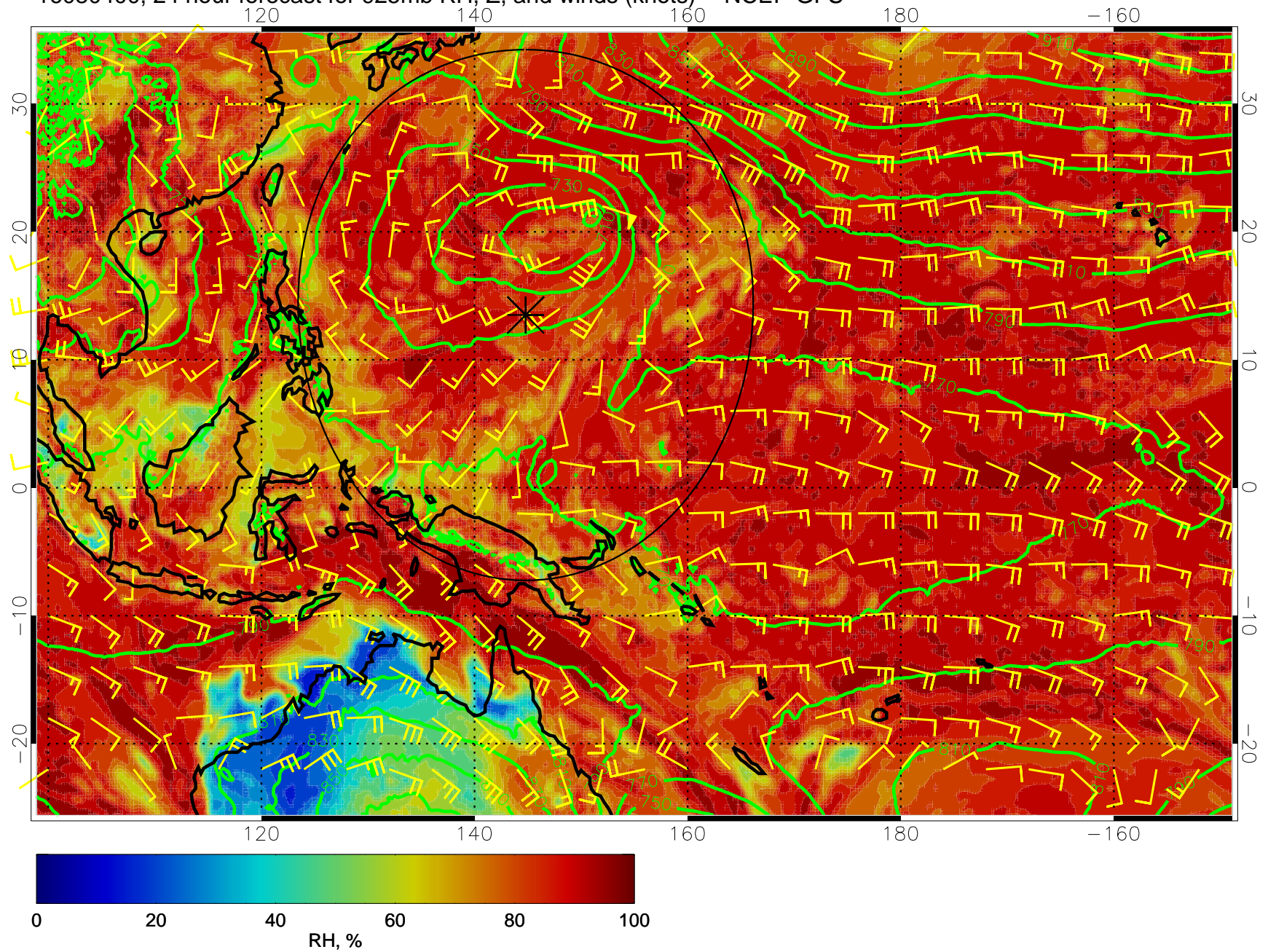


16080312, 12 hour forecast for 925mb RH, Z, and winds (knots) -- NCEP GFS

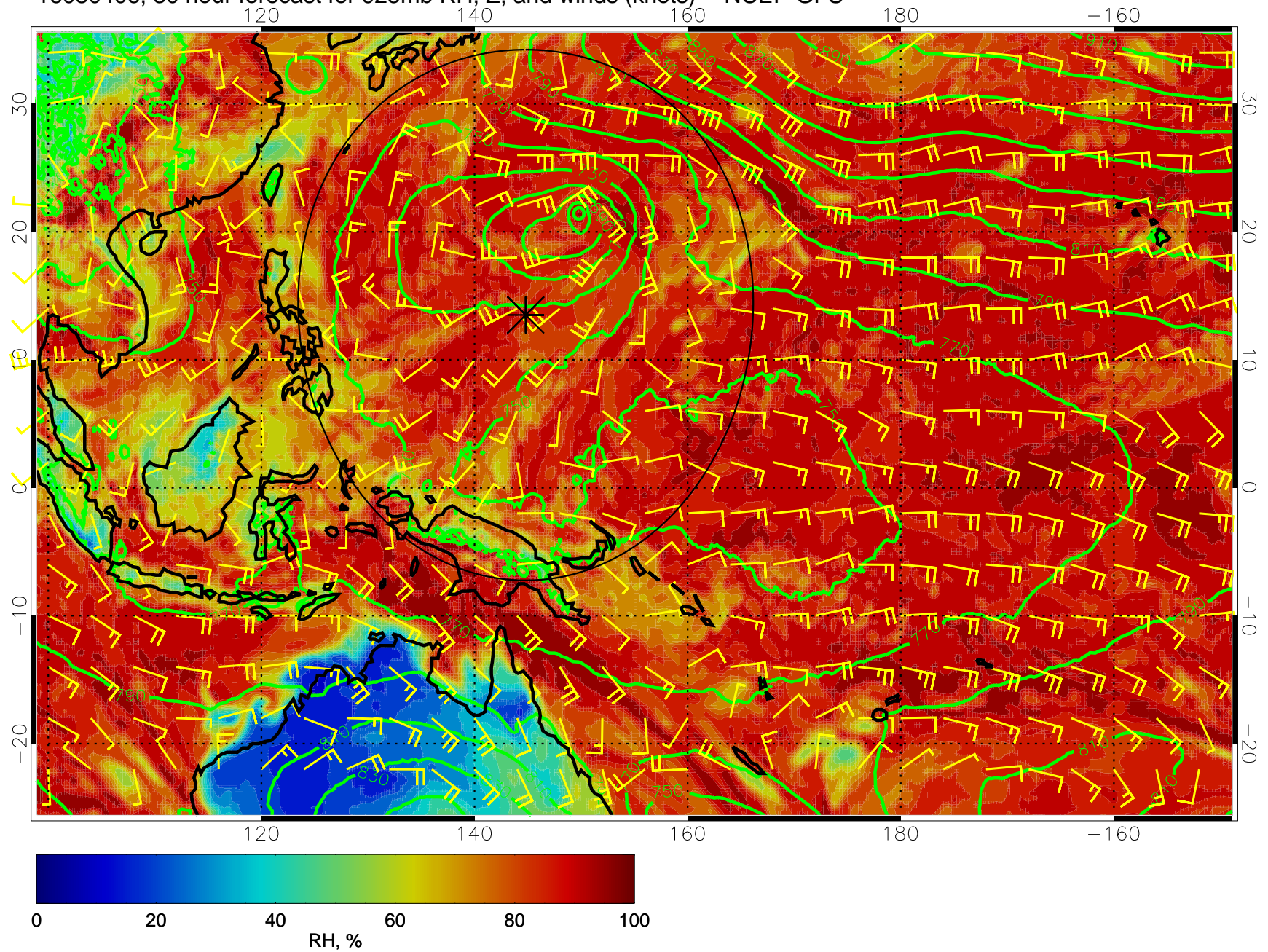




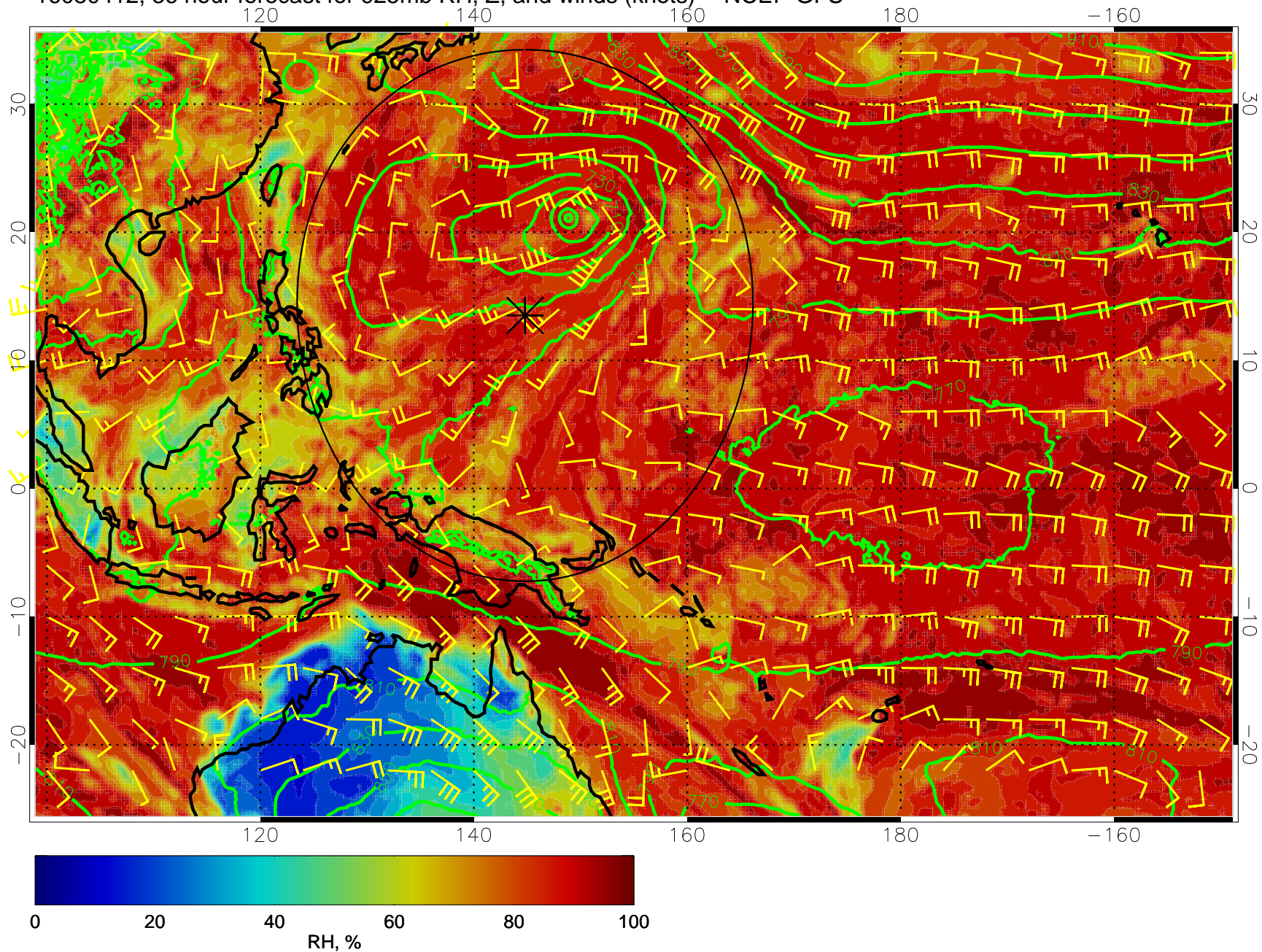
16080400, 24 hour forecast for 925mb RH, Z, and winds (knots) -- NCEP GFS



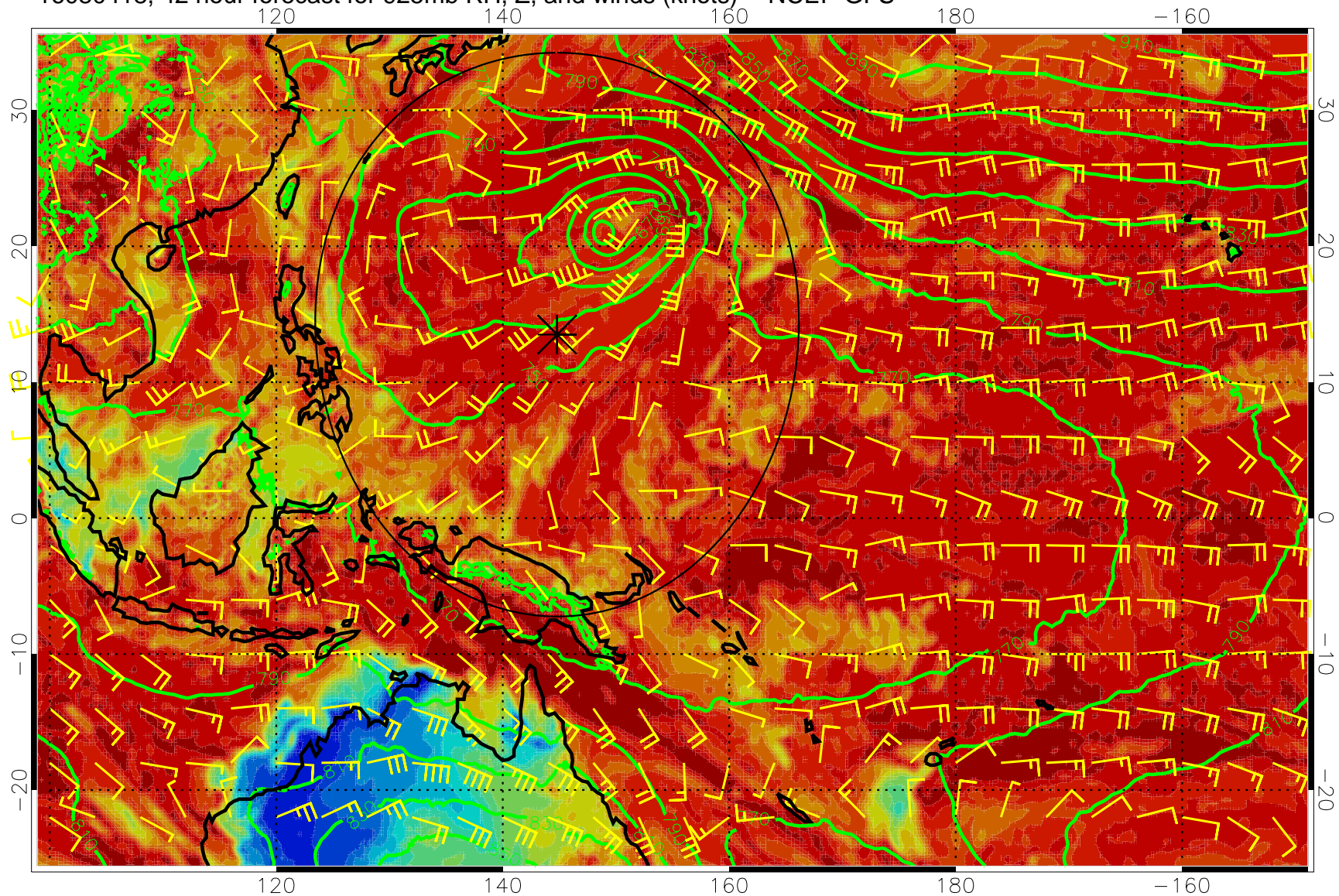
16080406, 30 hour forecast for 925mb RH, Z, and winds (knots) -- NCEP GFS



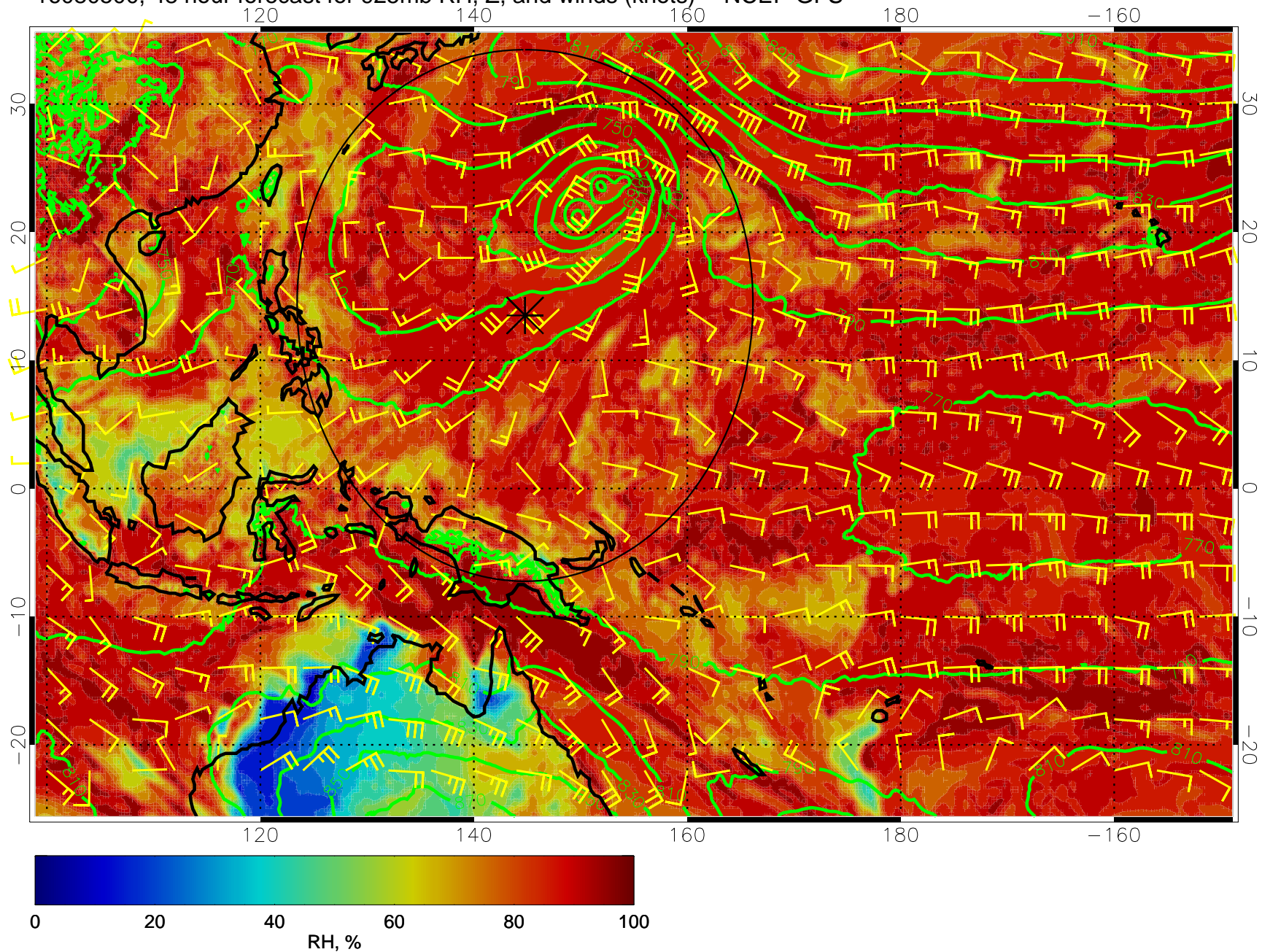
16080412, 36 hour forecast for 925mb RH, Z, and winds (knots) -- NCEP GFS



16080418, 42 hour forecast for 925mb RH, Z, and winds (knots) -- NCEP GFS

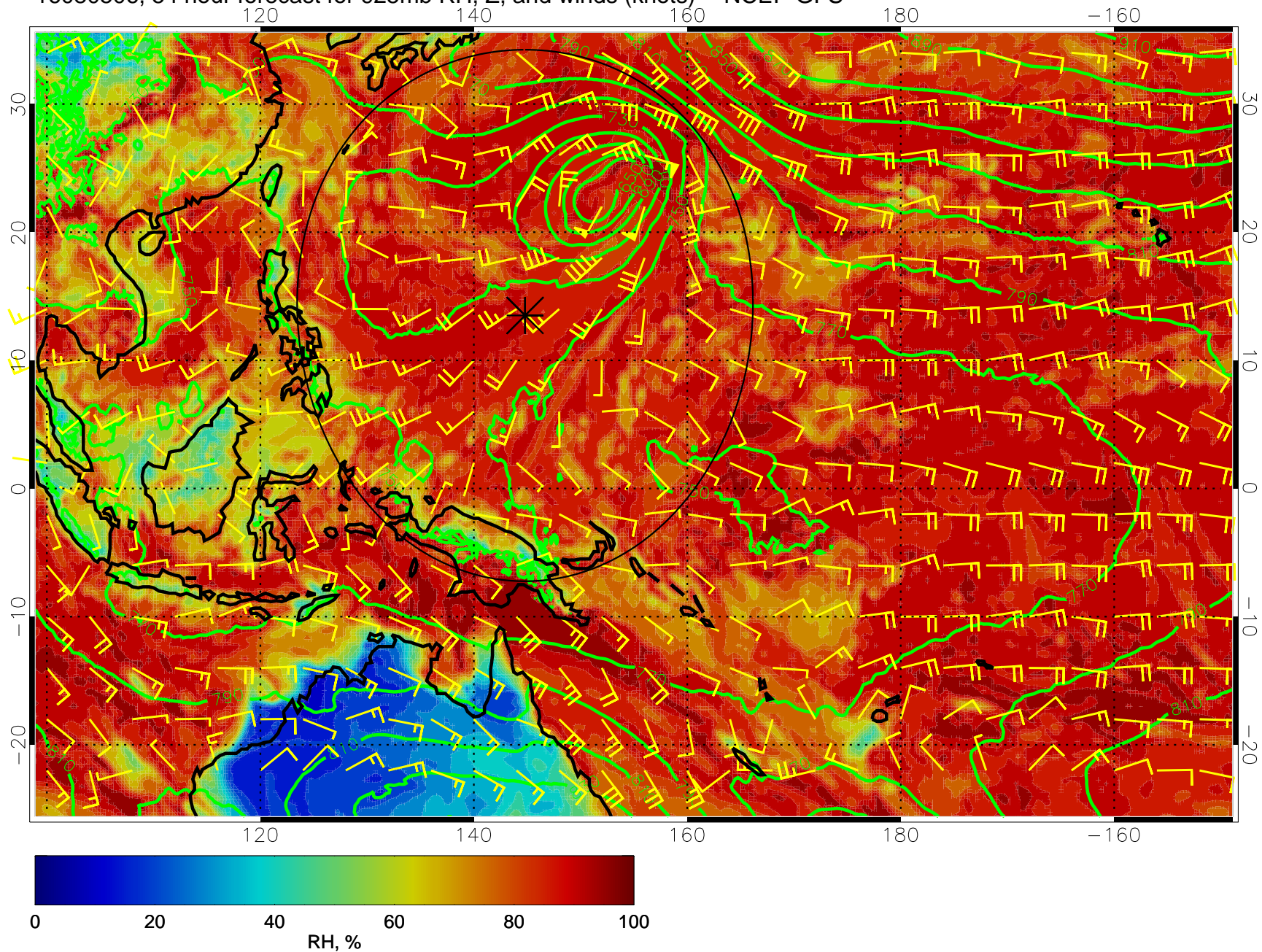


16080500, 48 hour forecast for 925mb RH, Z, and winds (knots) -- NCEP GFS

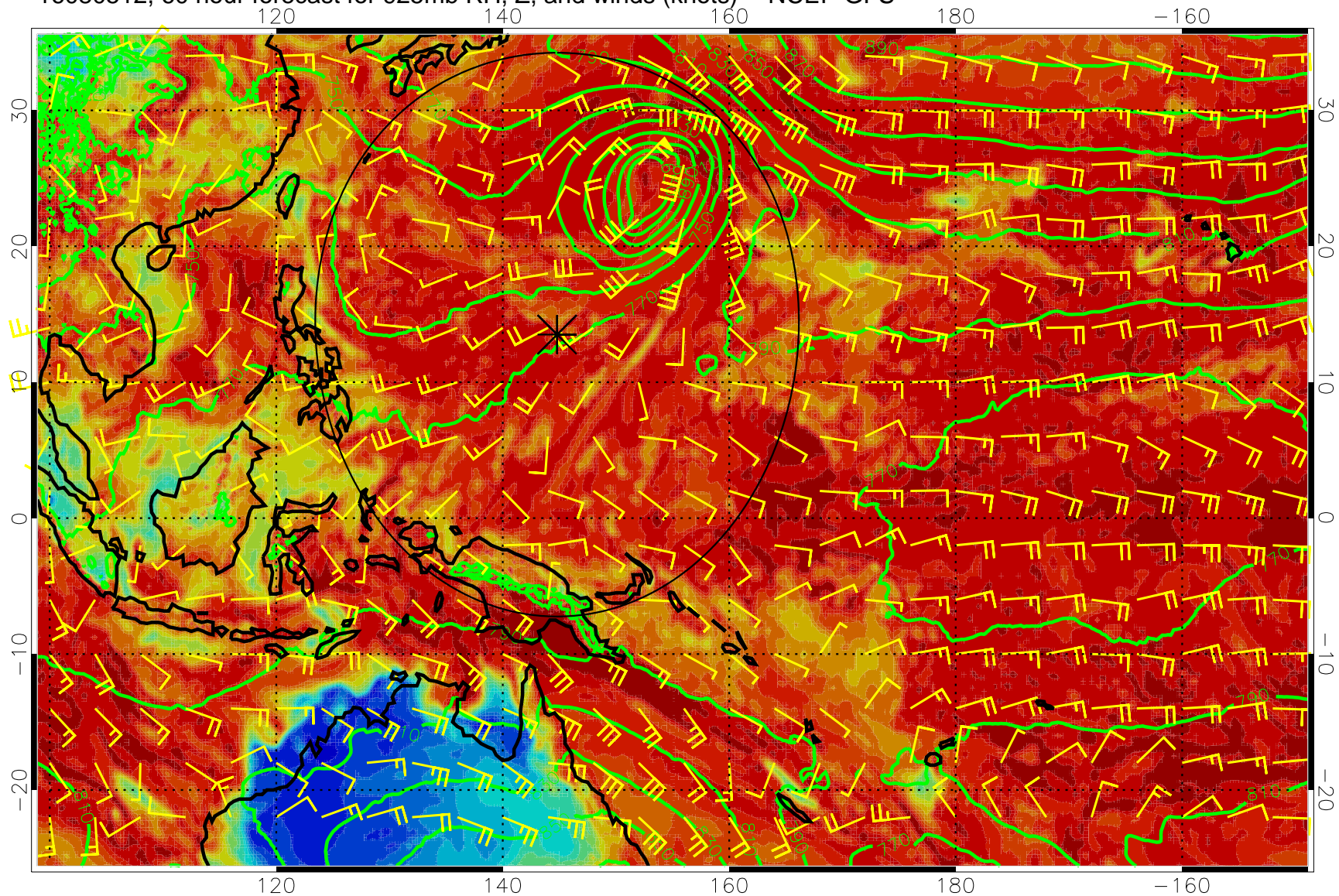




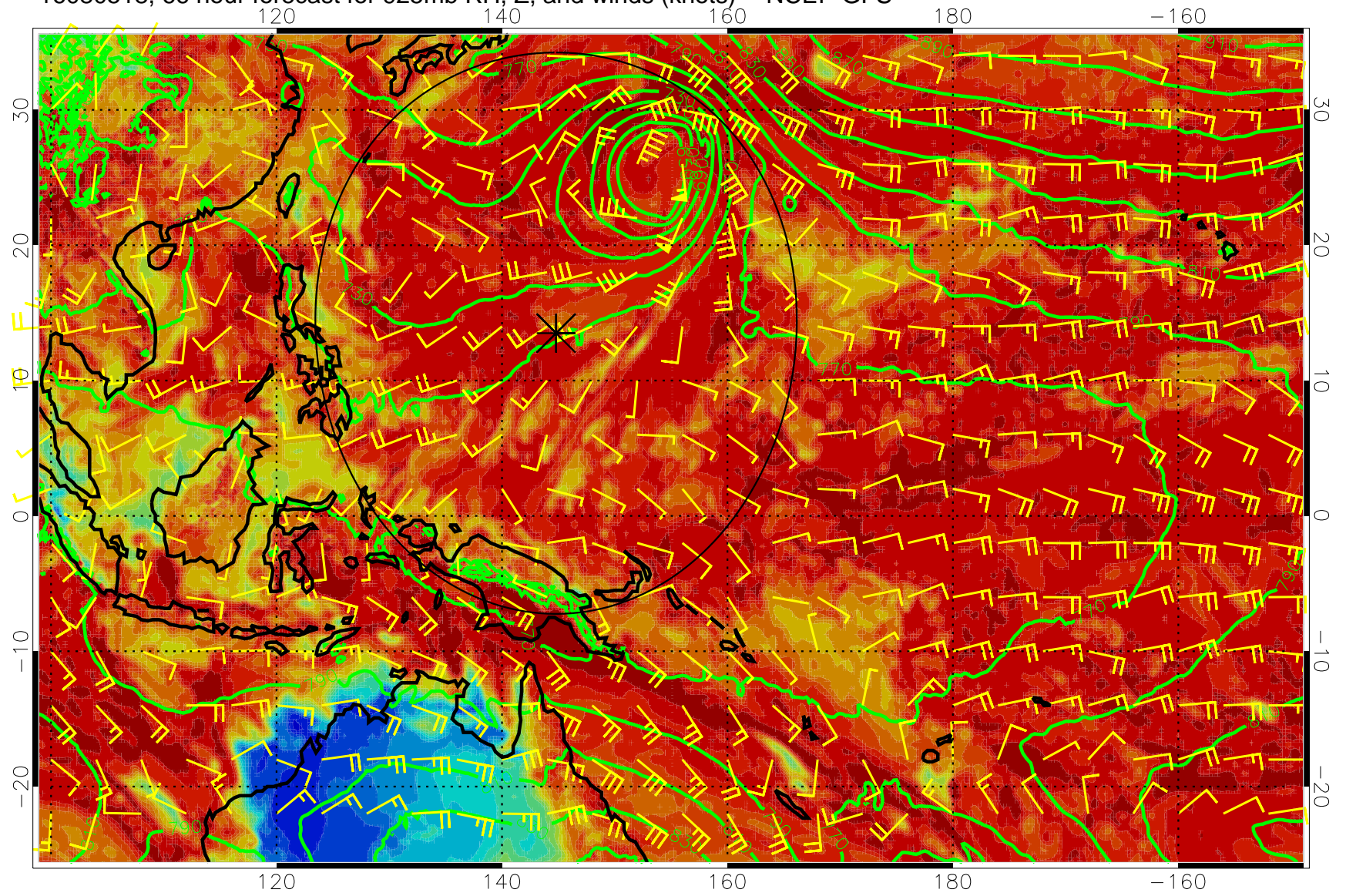
16080506, 54 hour forecast for 925mb RH, Z, and winds (knots) -- NCEP GFS



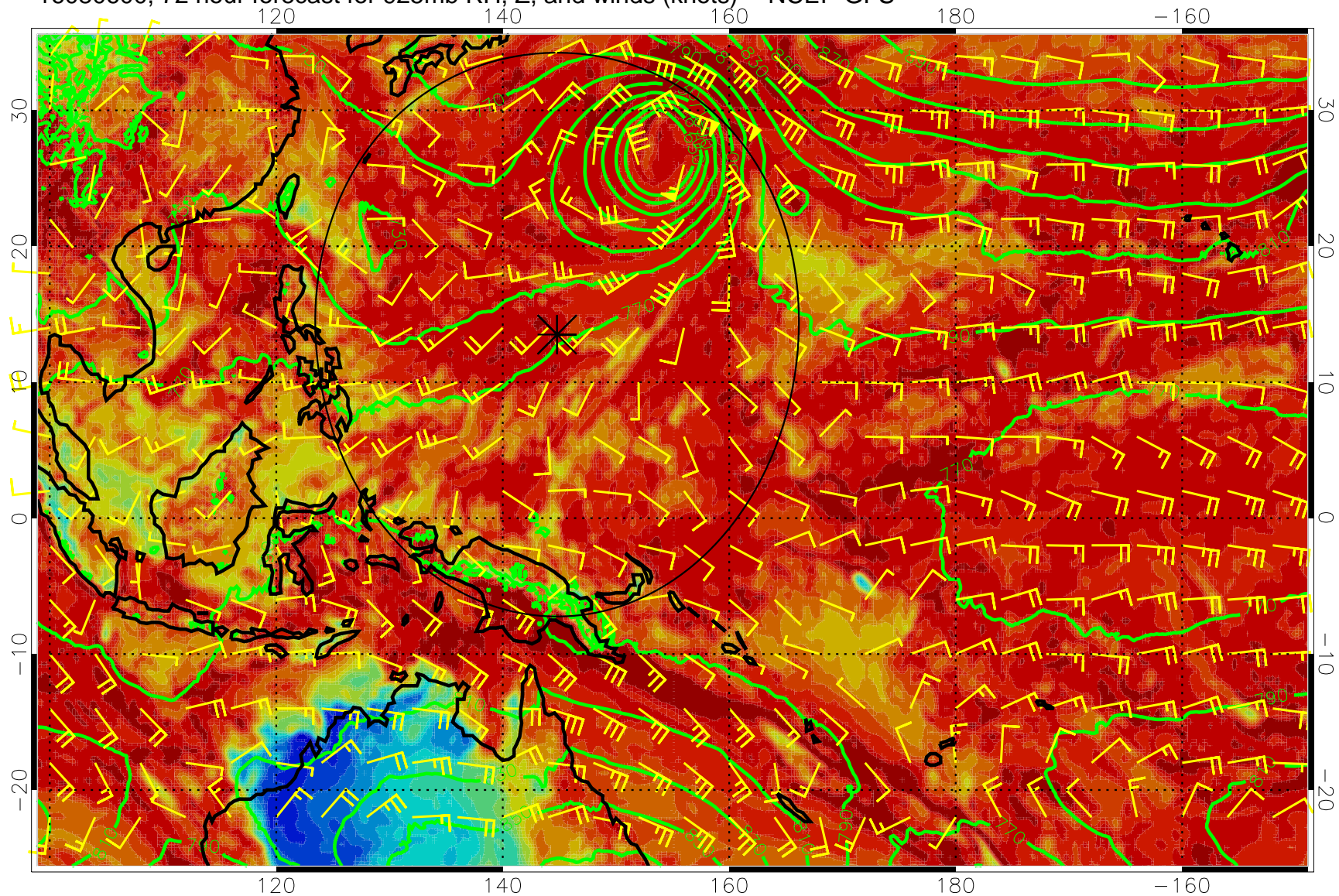
16080512, 60 hour forecast for 925mb RH, Z, and winds (knots) -- NCEP GFS



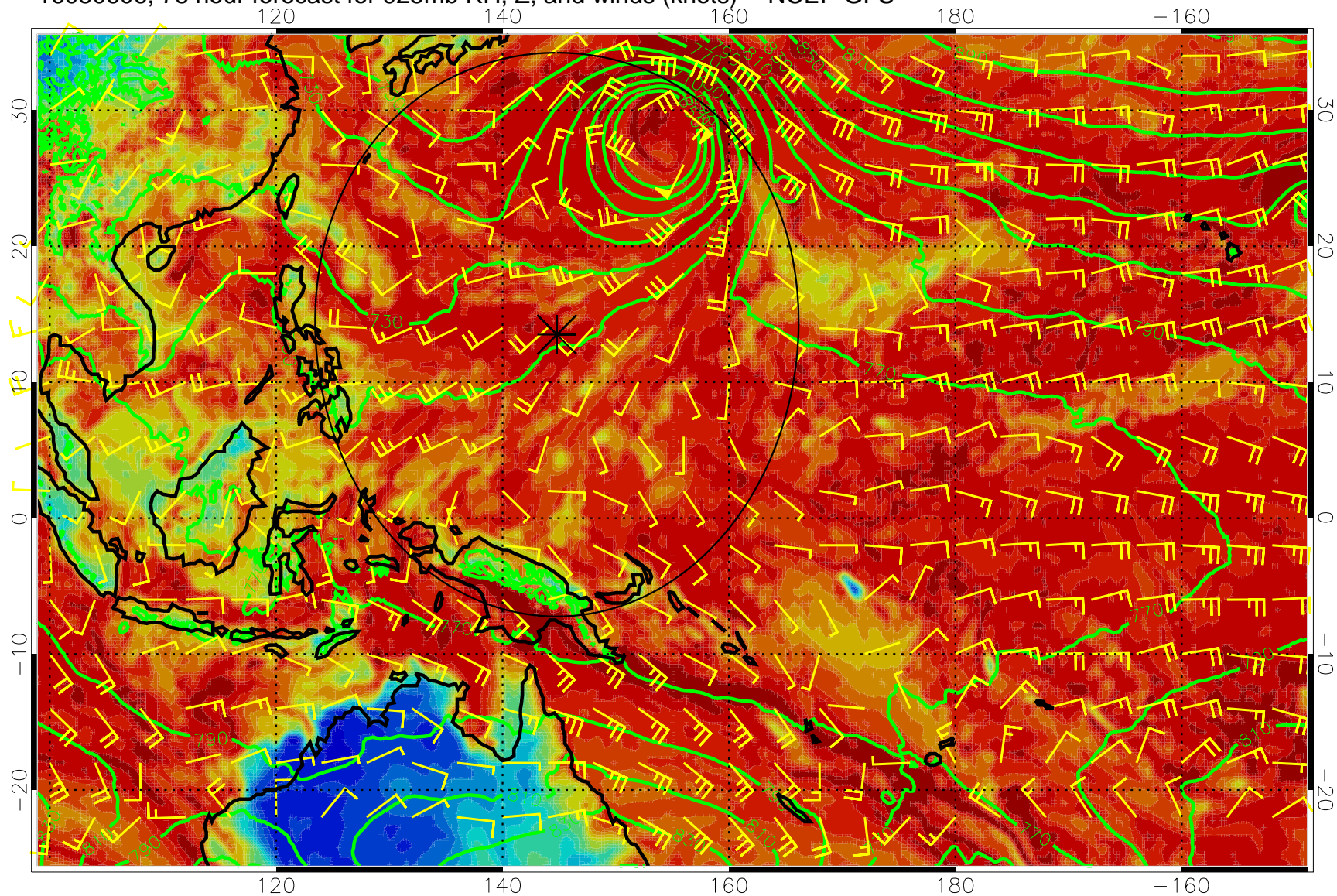
16080518, 66 hour forecast for 925mb RH, Z, and winds (knots) -- NCEP GFS



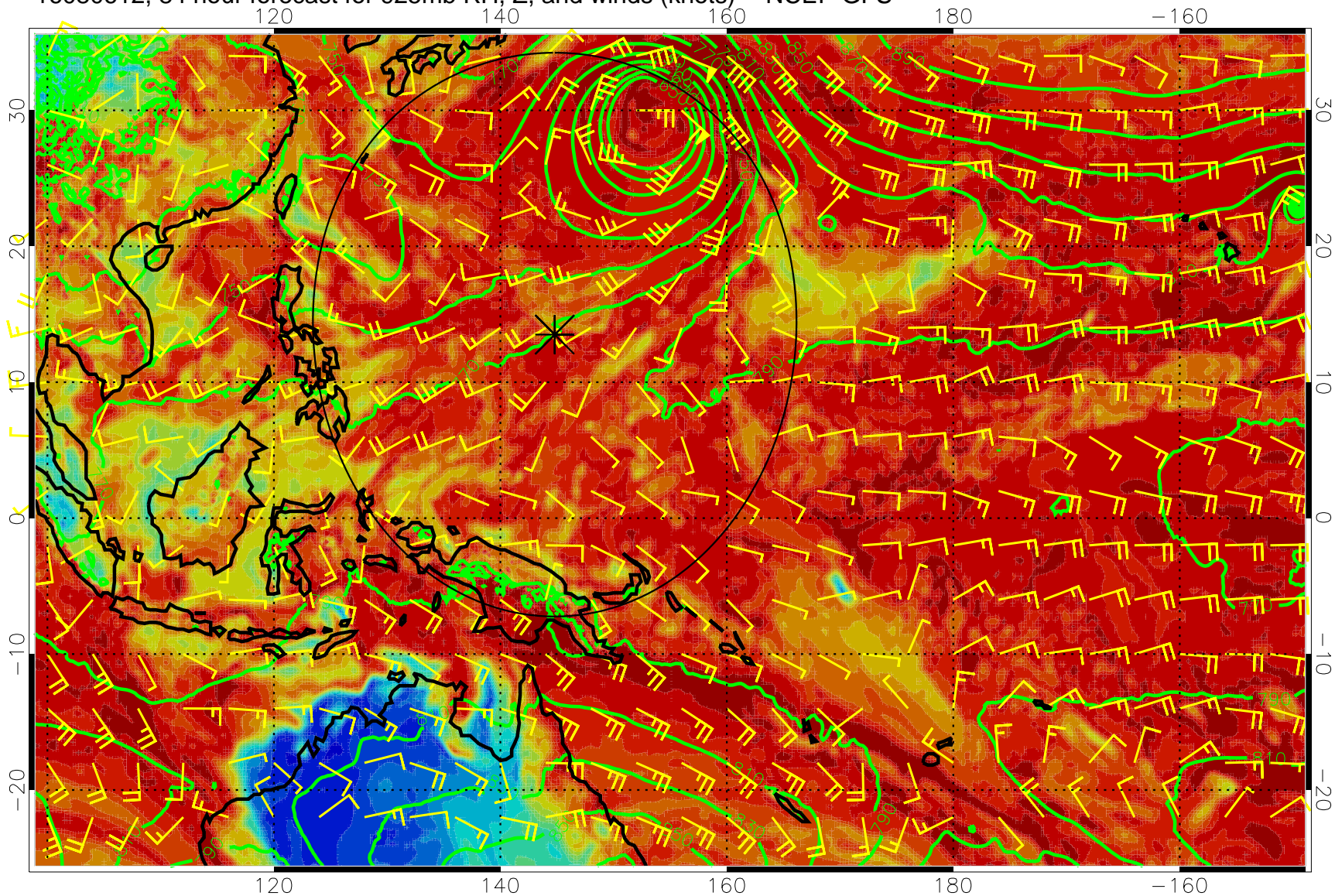
16080600, 72 hour forecast for 925mb RH, Z, and winds (knots) -- NCEP GFS



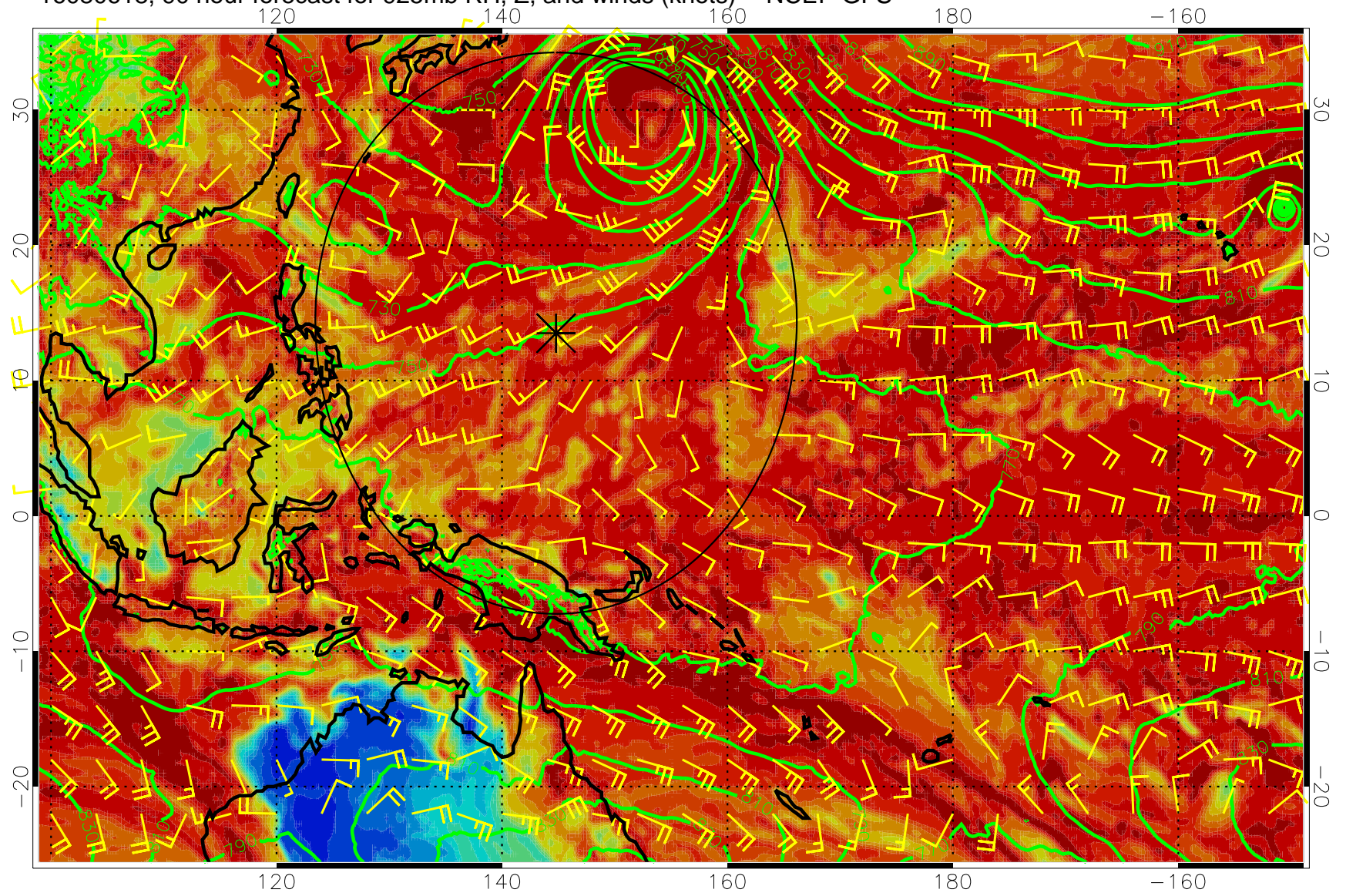
16080606, 78 hour forecast for 925mb RH, Z, and winds (knots) -- NCEP GFS



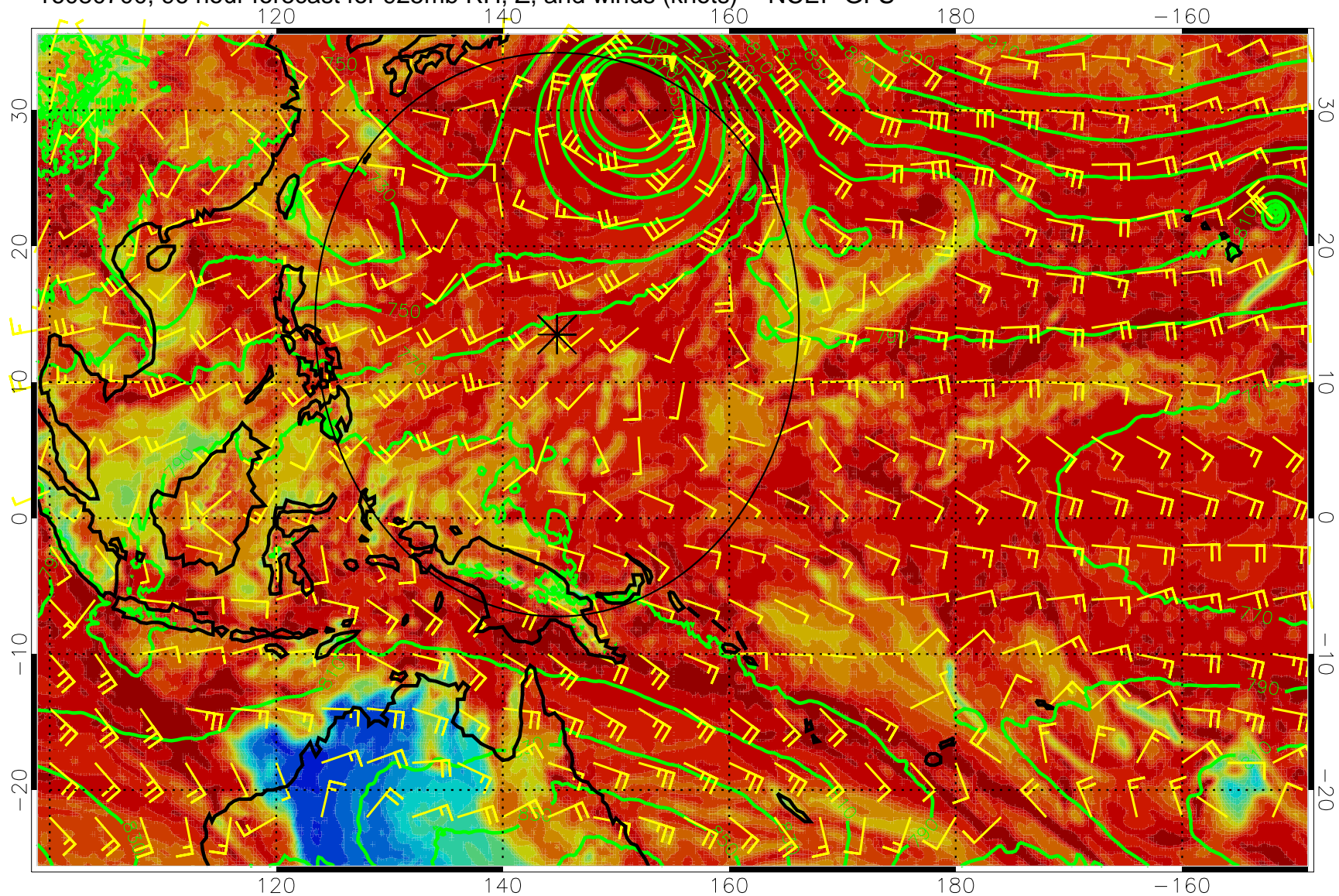
16080612, 84 hour forecast for 925mb RH, Z, and winds (knots) -- NCEP GFS



16080618, 90 hour forecast for 925mb RH, Z, and winds (knots) -- NCEP GFS



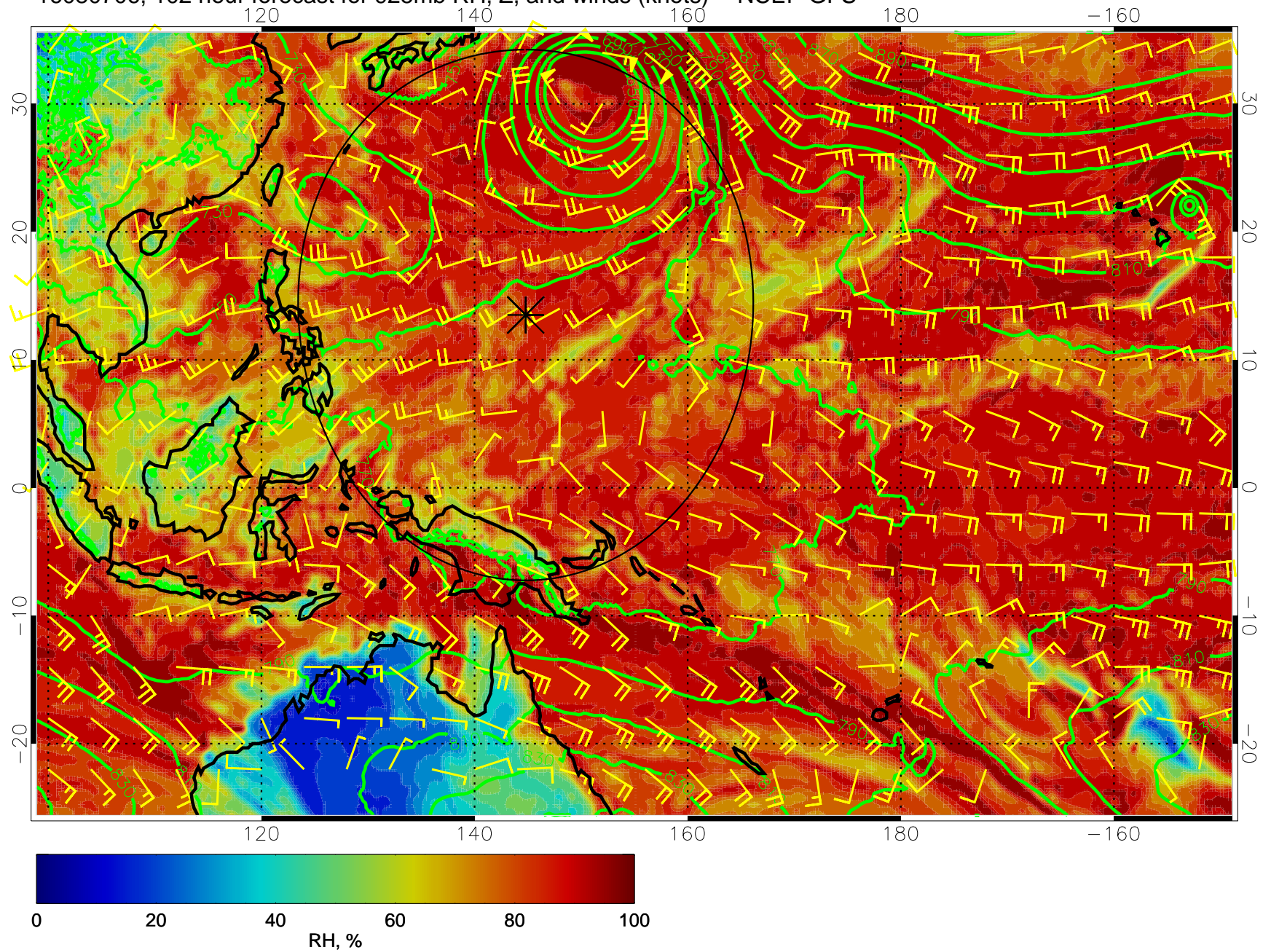
16080700, 96 hour forecast for 925mb RH, Z, and winds (knots) -- NCEP GFS



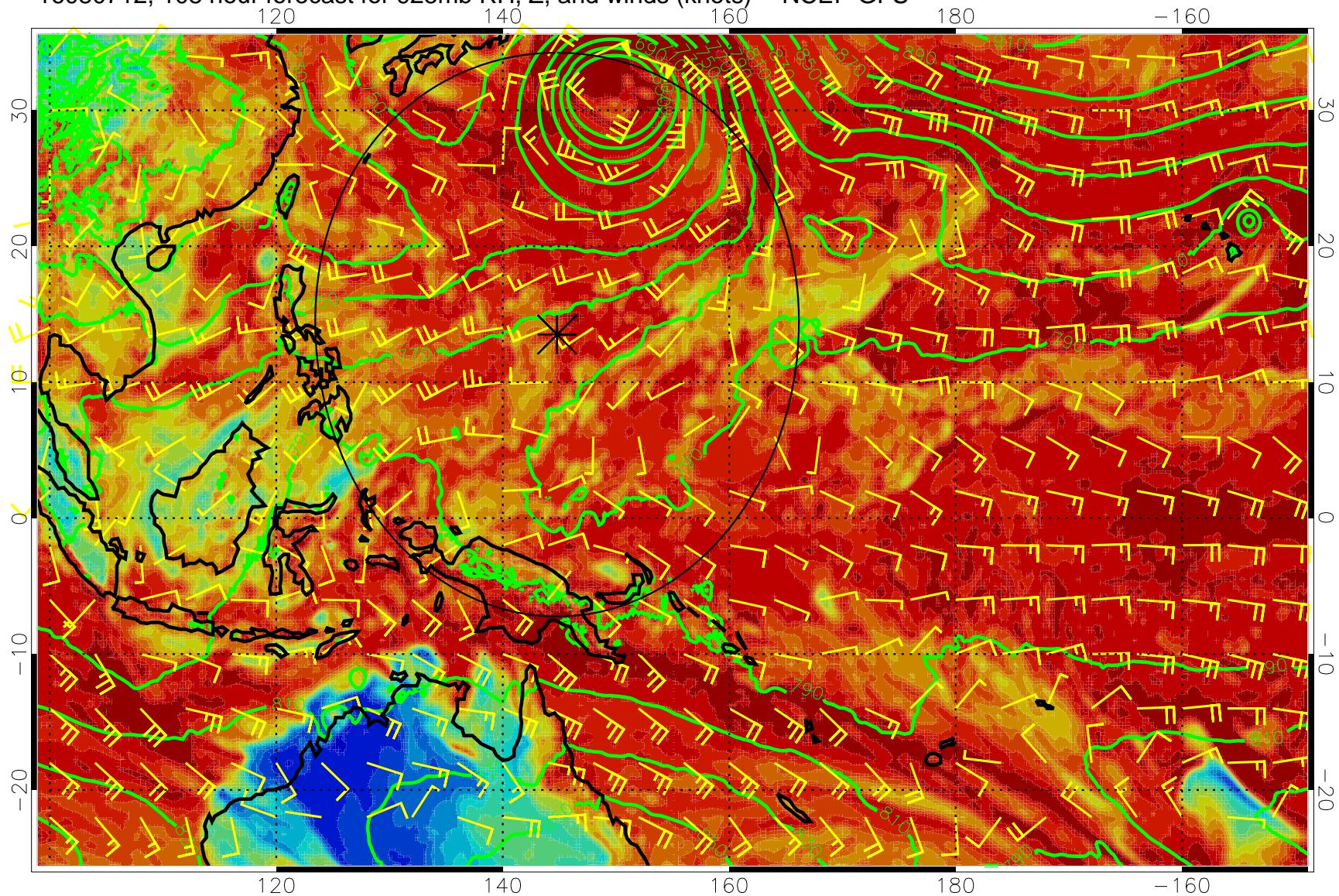
0 20 40 60 80 100  
RH, %



16080706, 102 hour forecast for 925mb RH, Z, and winds (knots) -- NCEP GFS

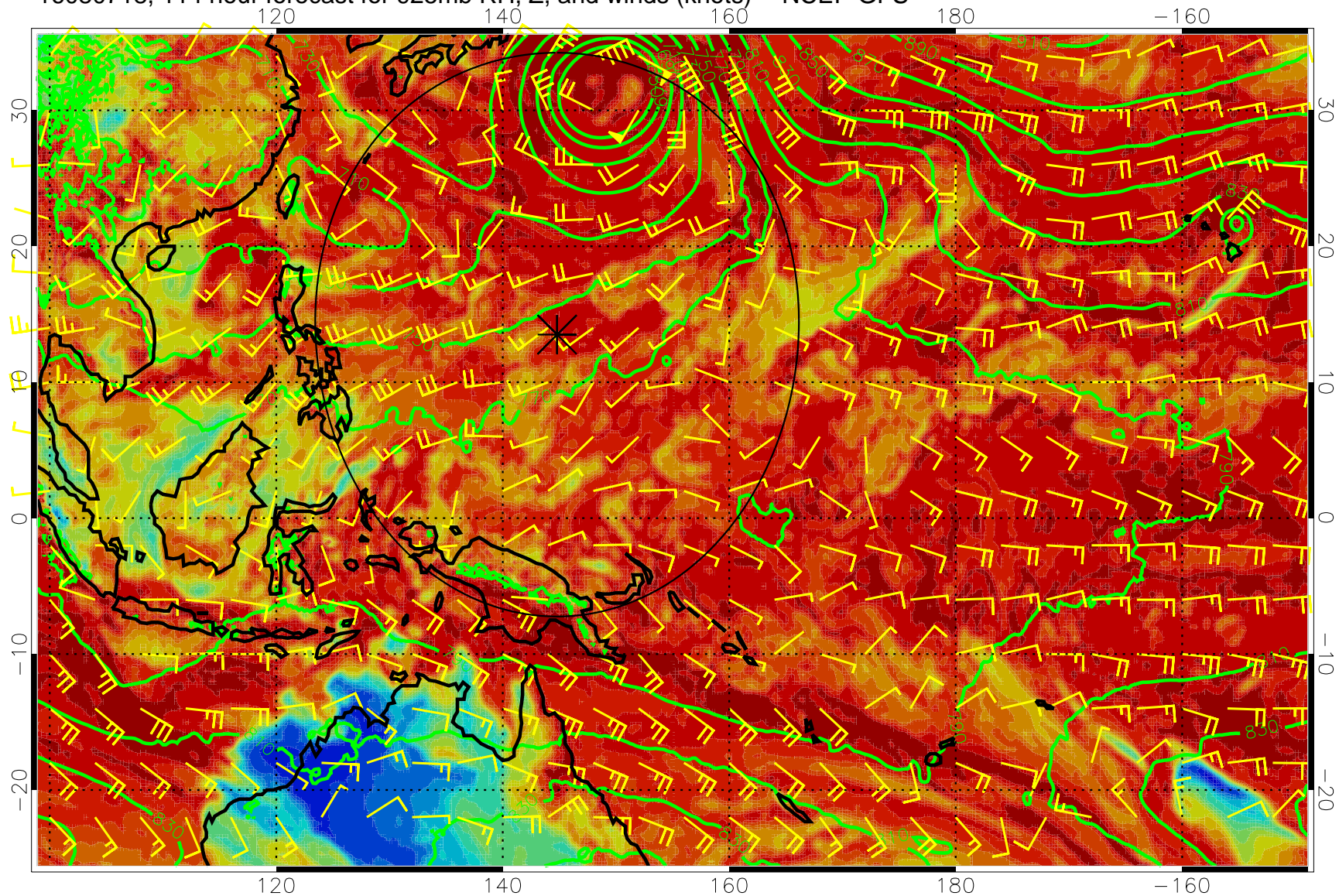


16080712, 108 hour forecast for 925mb RH, Z, and winds (knots) -- NCEP GFS



0 20 40 60 80 100  
RH, %

16080718, 114 hour forecast for 925mb RH, Z, and winds (knots) -- NCEP GFS



16080800, 120 hour forecast for 925mb RH, Z, and winds (knots) -- NCEP GFS

