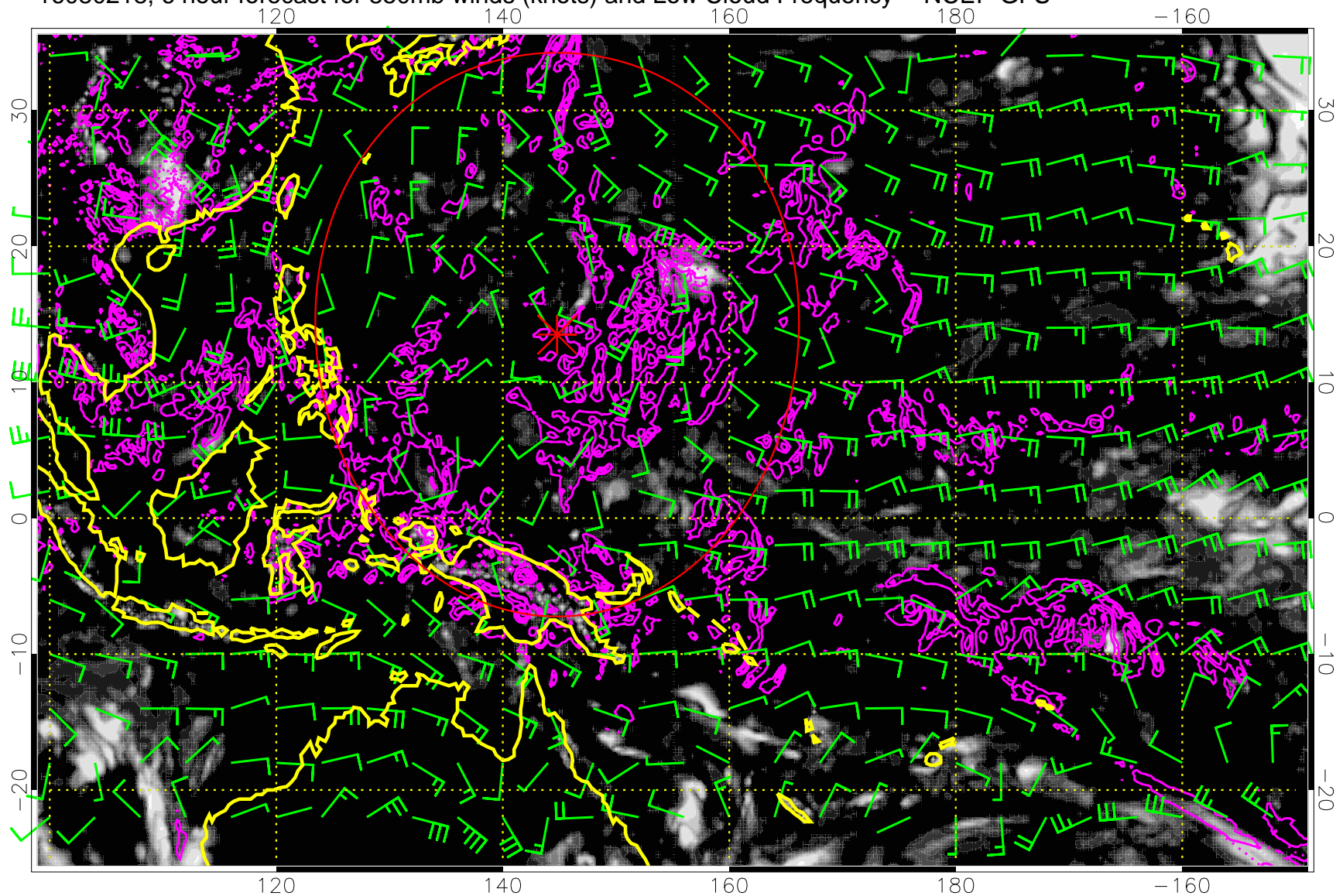


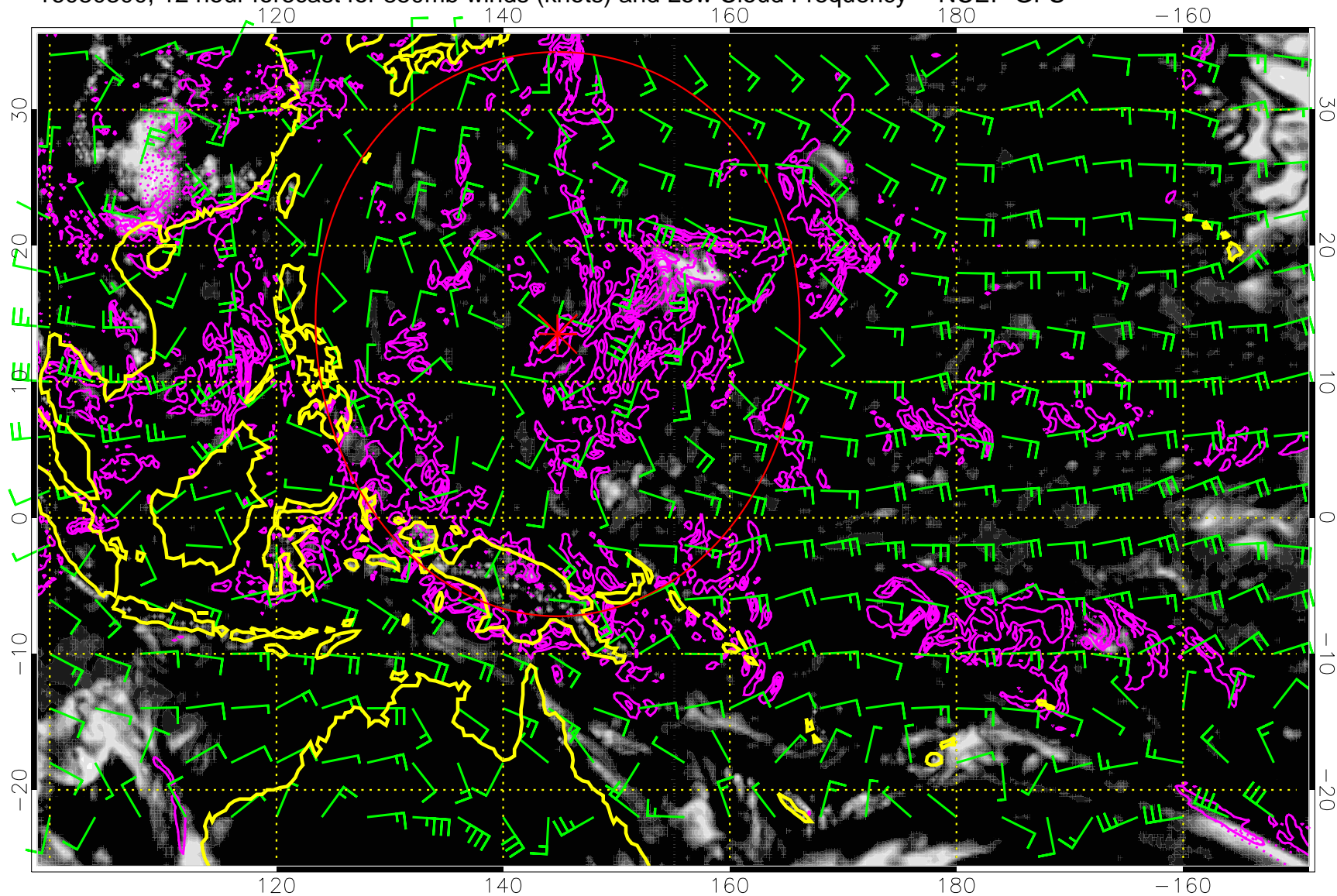
16080218, 6 hour forecast for 850mb winds (knots) and Low Cloud Frequency -- NCEP GFS



Precip (tot dot, conv sol) mm/day 40 mm/day contours, min 20

Range ring of 2304 km

16080300, 12 hour forecast for 850mb winds (knots) and Low Cloud Frequency -- NCEP GFS

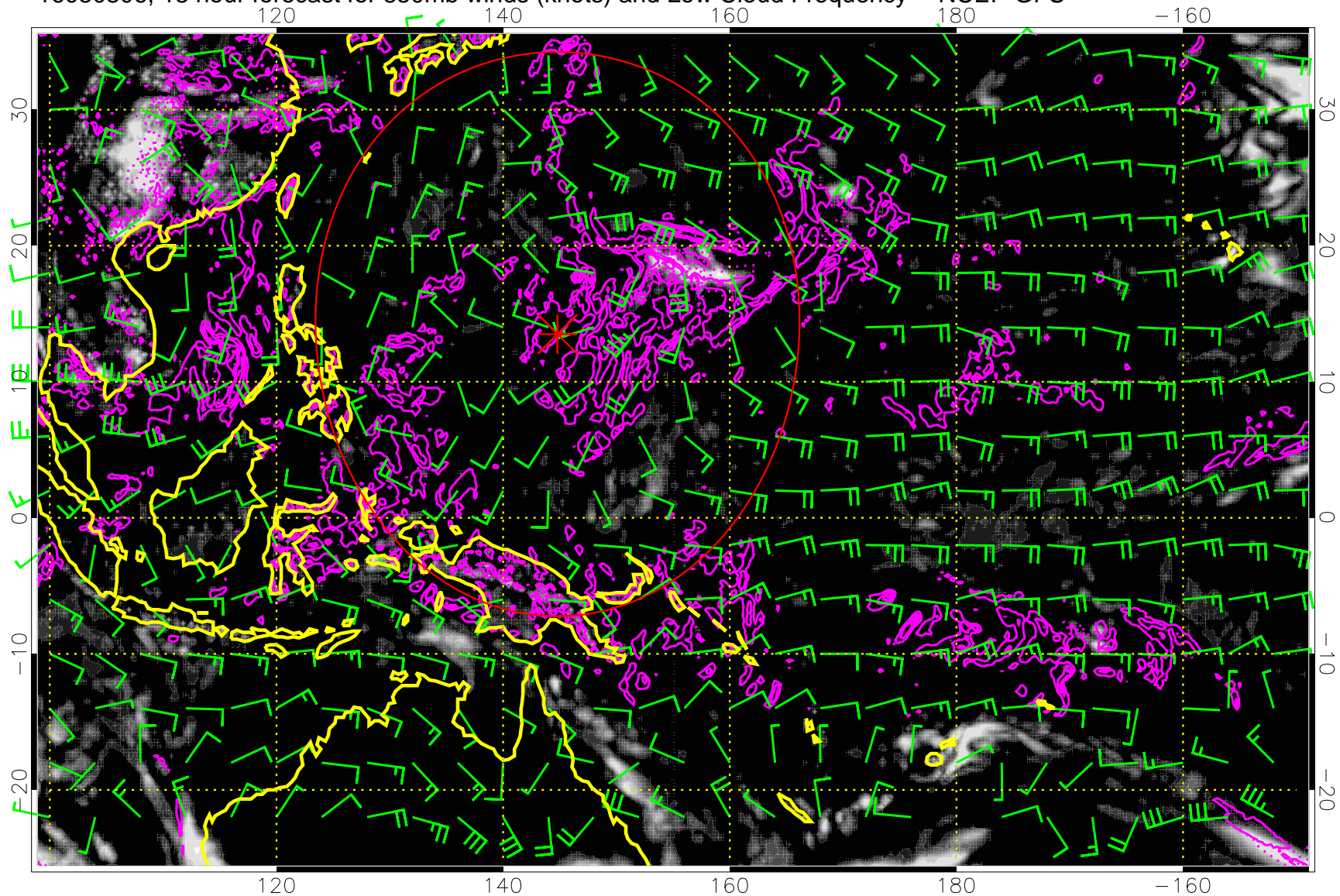


0.0 0.2 0.4 0.6 0.8 1.0
Low Cloud Frequency

Precip (tot dot, conv sol) mm/day 40 mm/day contours, min 20

Range ring of 2304 km

16080306, 18 hour forecast for 850mb winds (knots) and Low Cloud Frequency -- NCEP GFS

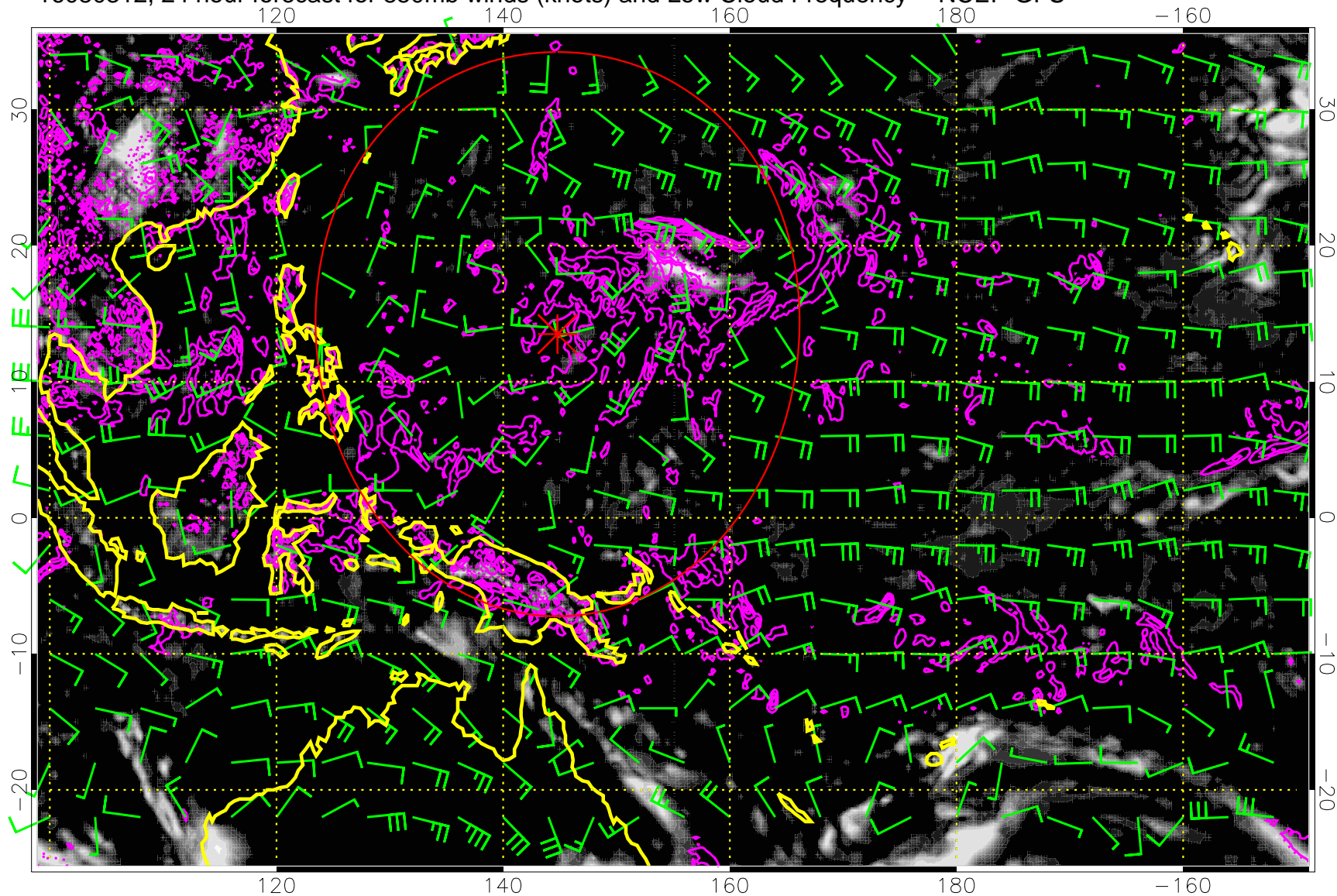


0.0 0.2 0.4 0.6 0.8 1.0
Low Cloud Frequency

Precip (tot dot, conv sol) mm/day 40 mm/day contours, min 20

Range ring of 2304 km

16080312, 24 hour forecast for 850mb winds (knots) and Low Cloud Frequency -- NCEP GFS

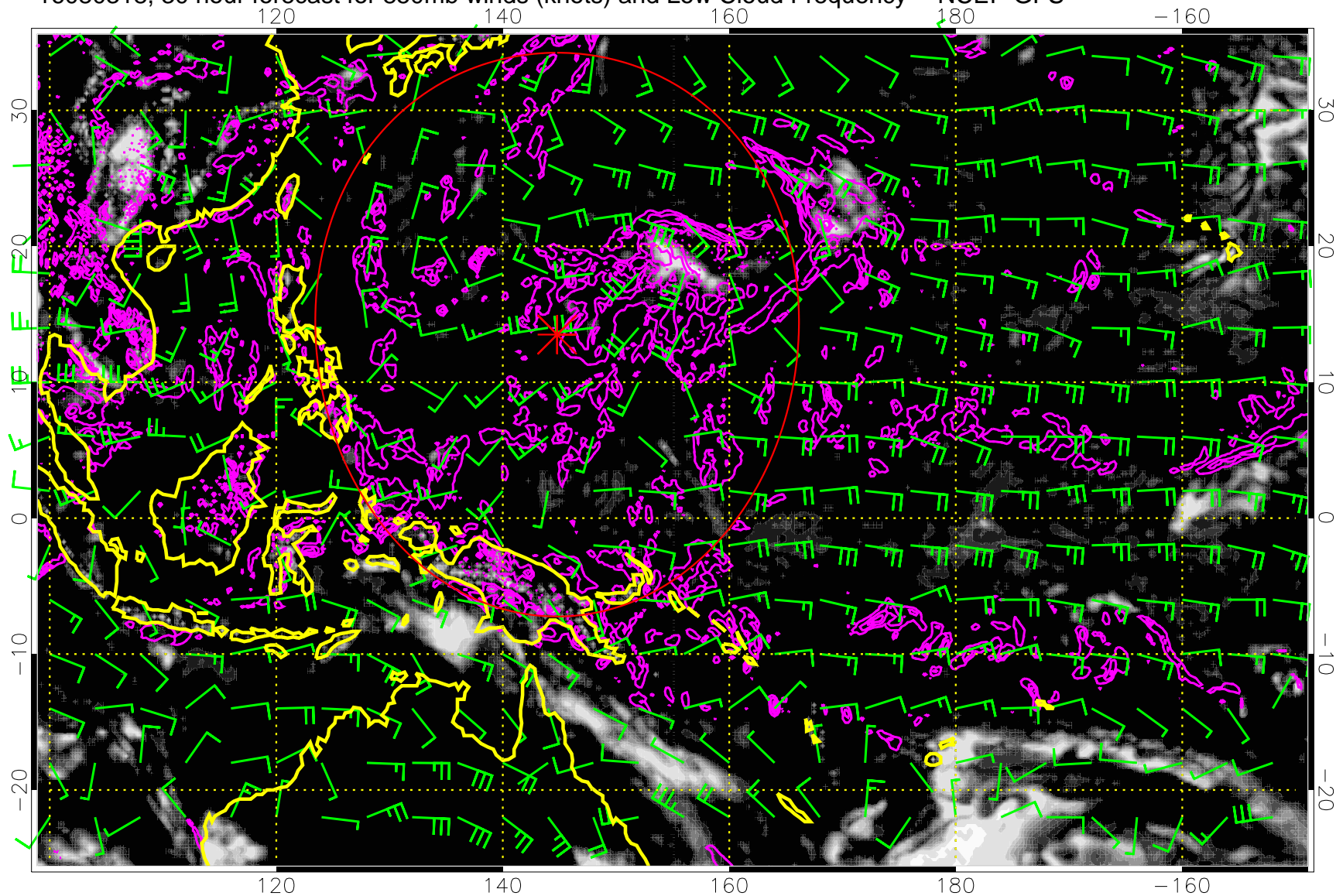


0.0 0.2 0.4 0.6 0.8 1.0
Low Cloud Frequency

Precip (tot dot, conv sol) mm/day 40 mm/day contours, min 20

Range ring of 2304 km

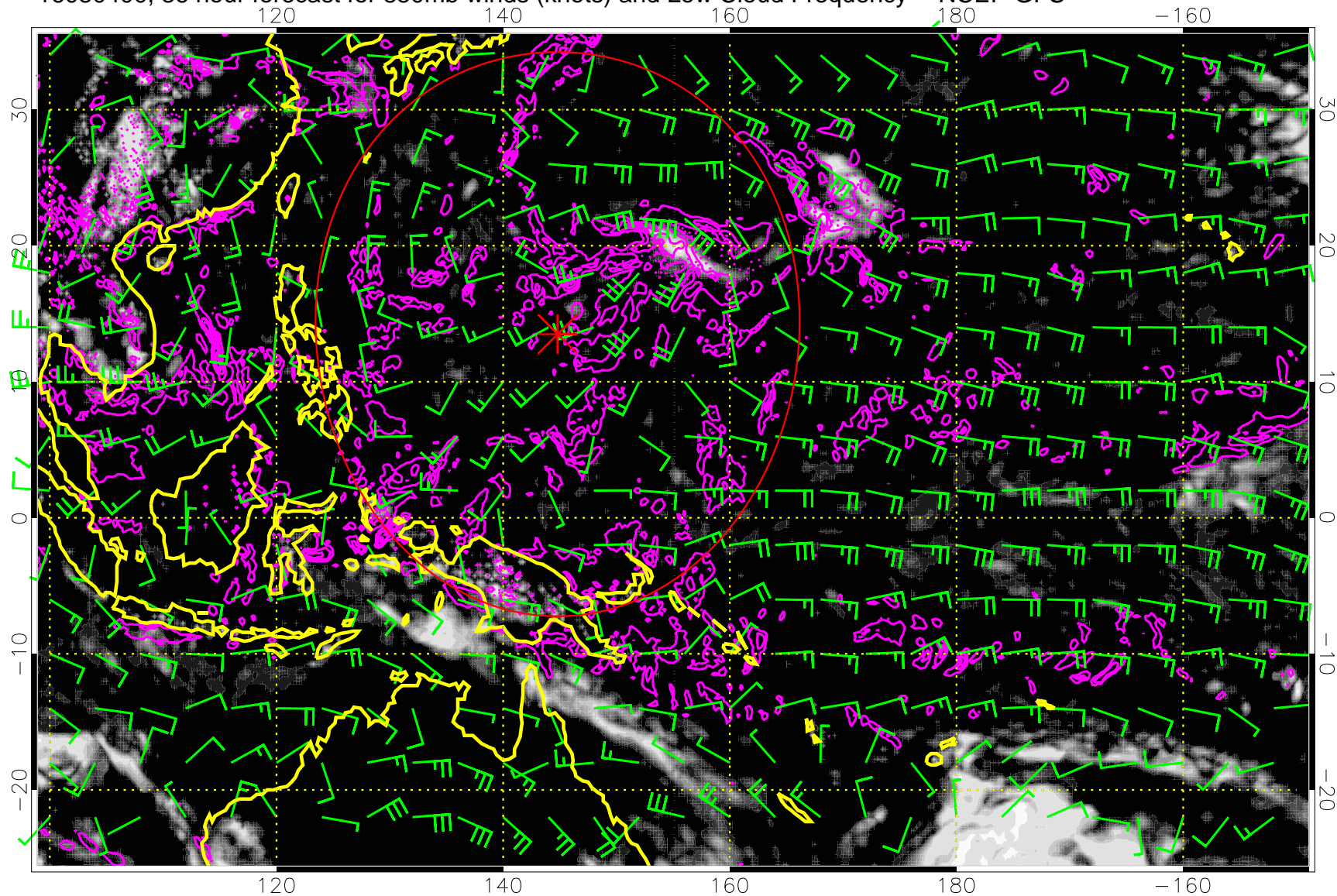
16080318, 30 hour forecast for 850mb winds (knots) and Low Cloud Frequency -- NCEP GFS



Precip (tot dot, conv sol) mm/day 40 mm/day contours, min 20

Range ring of 2304 km

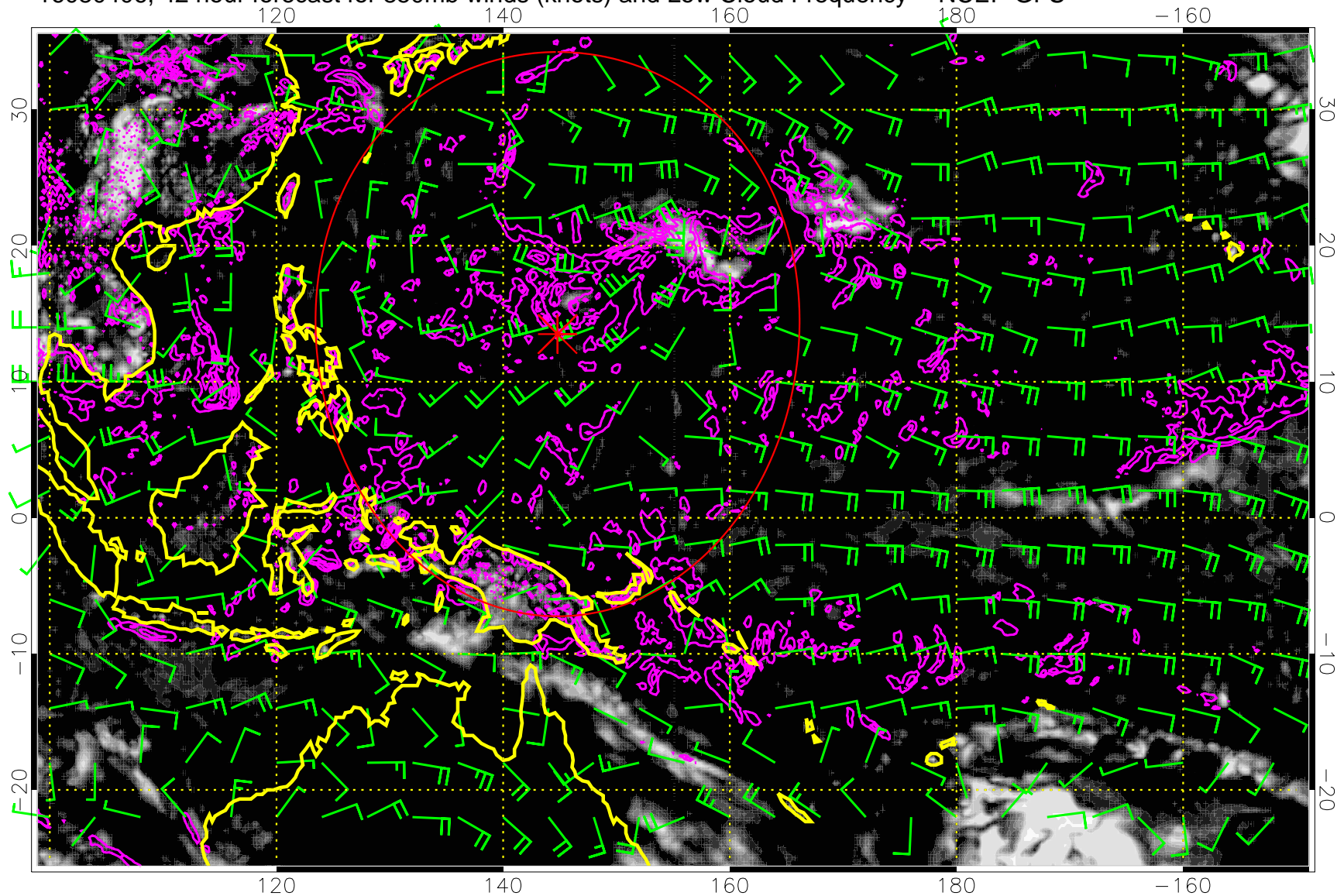
16080400, 36 hour forecast for 850mb winds (knots) and Low Cloud Frequency -- NCEP GFS



Precip (tot dot, conv sol) mm/day 40 mm/day contours, min 20

Range ring of 2304 km

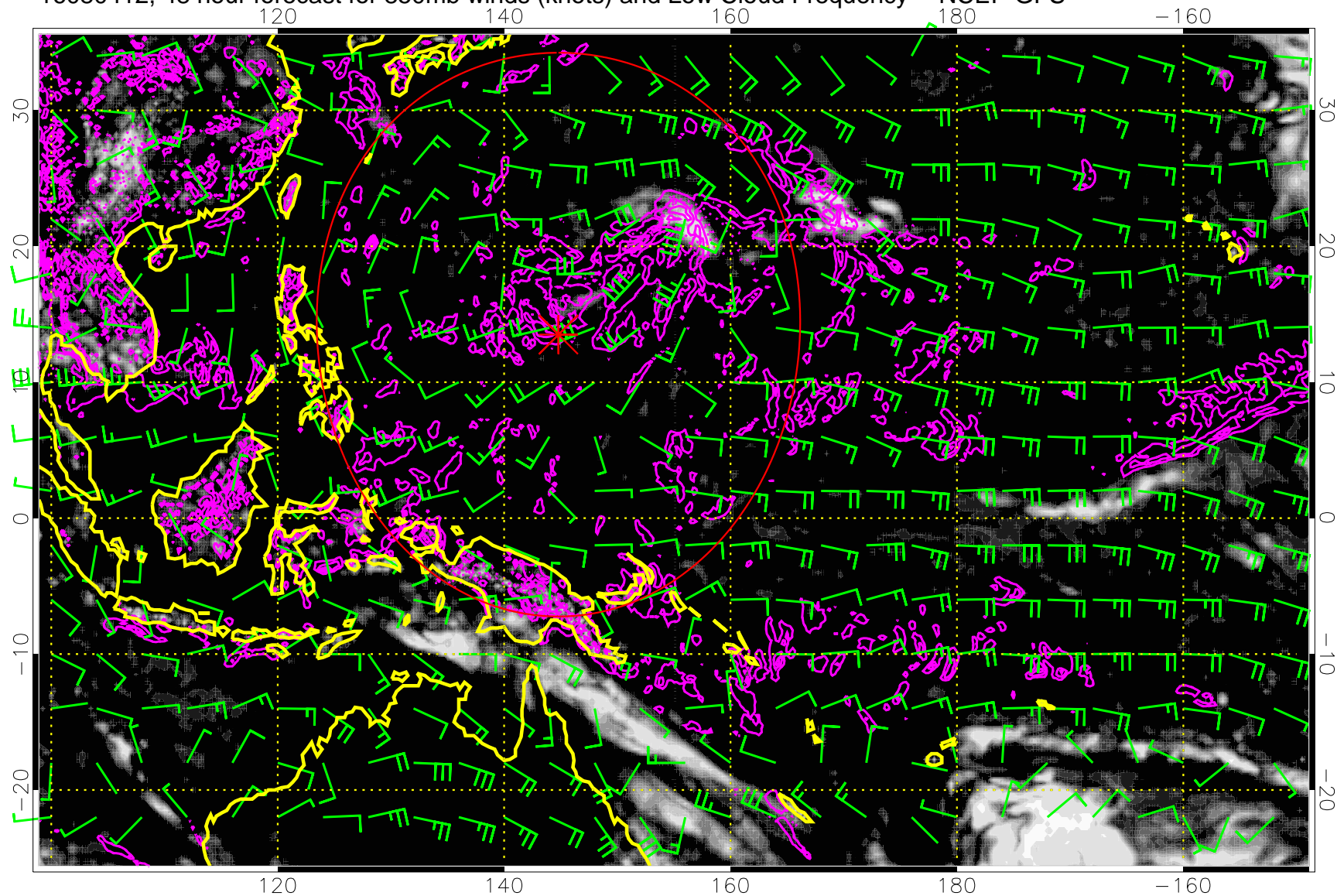
16080406, 42 hour forecast for 850mb winds (knots) and Low Cloud Frequency -- NCEP GFS



Precip (tot dot, conv sol) mm/day 40 mm/day contours, min 20

Range ring of 2304 km

16080412, 48 hour forecast for 850mb winds (knots) and Low Cloud Frequency -- NCEP GFS

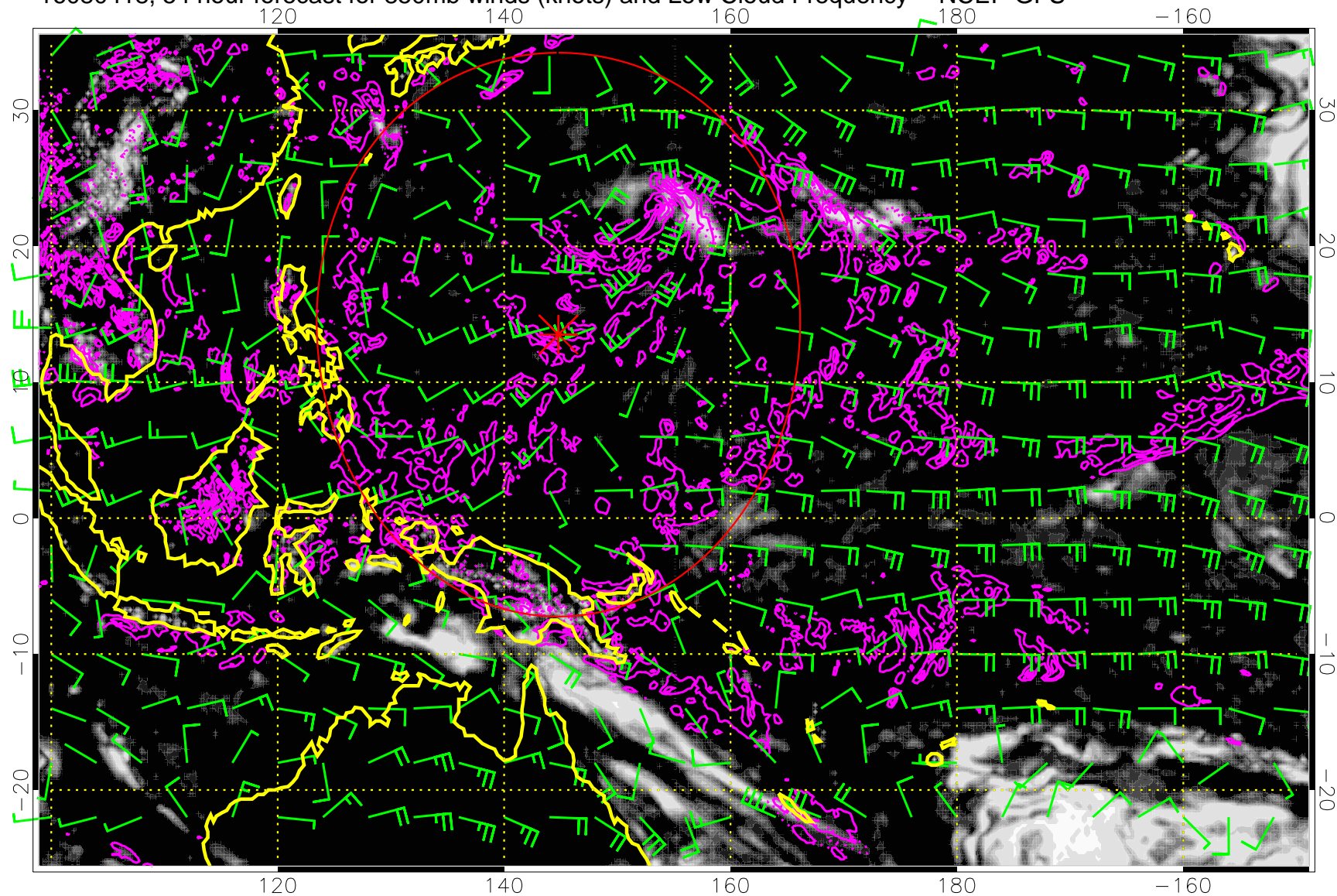


0.0 0.2 0.4 0.6 0.8 1.0
Low Cloud Frequency

Precip (tot dot, conv sol) mm/day 40 mm/day contours, min 20

Range ring of 2304 km

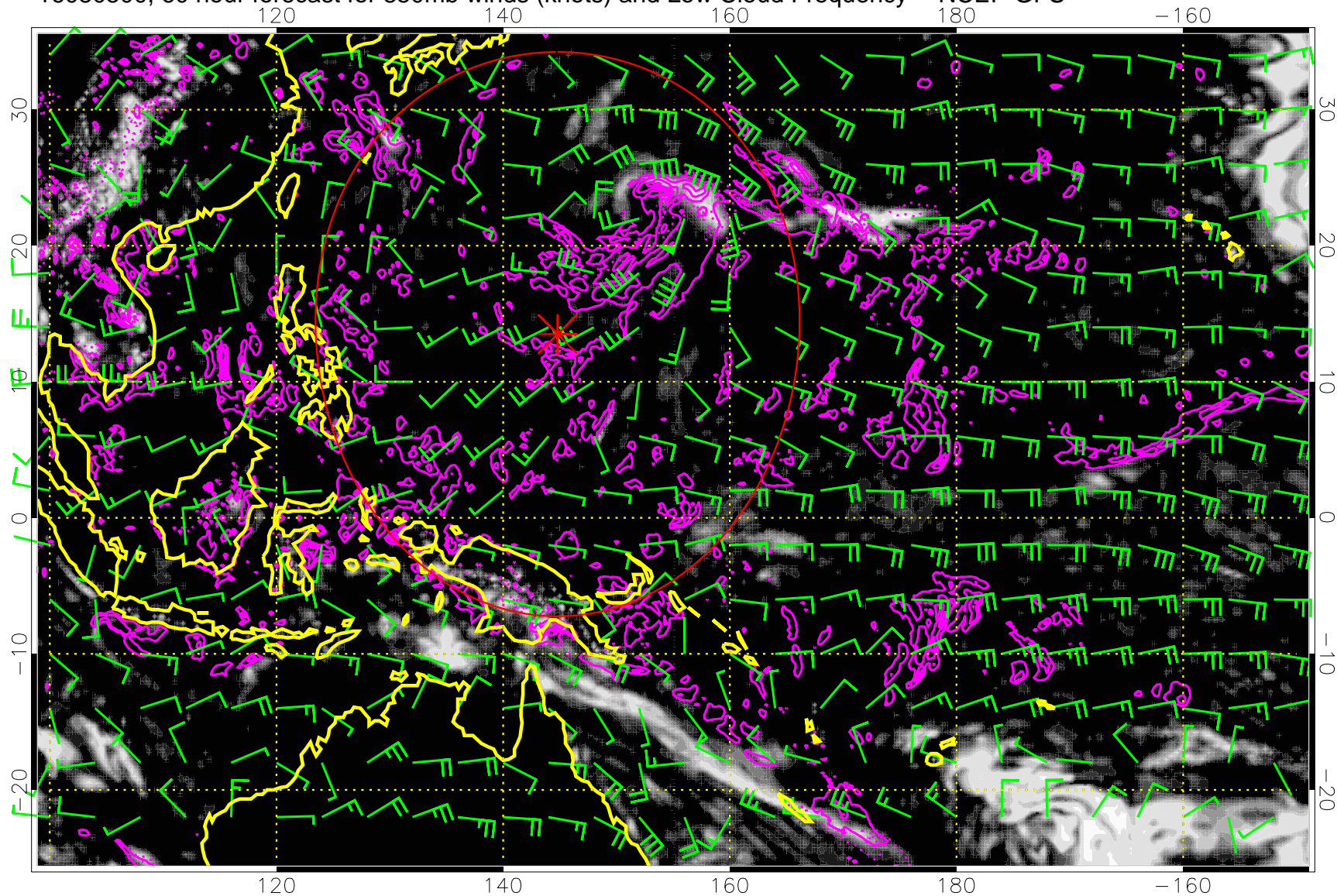
16080418, 54 hour forecast for 850mb winds (knots) and Low Cloud Frequency -- NCEP GFS



Precip (tot dot, conv sol) mm/day 40 mm/day contours, min 20

Range ring of 2304 km

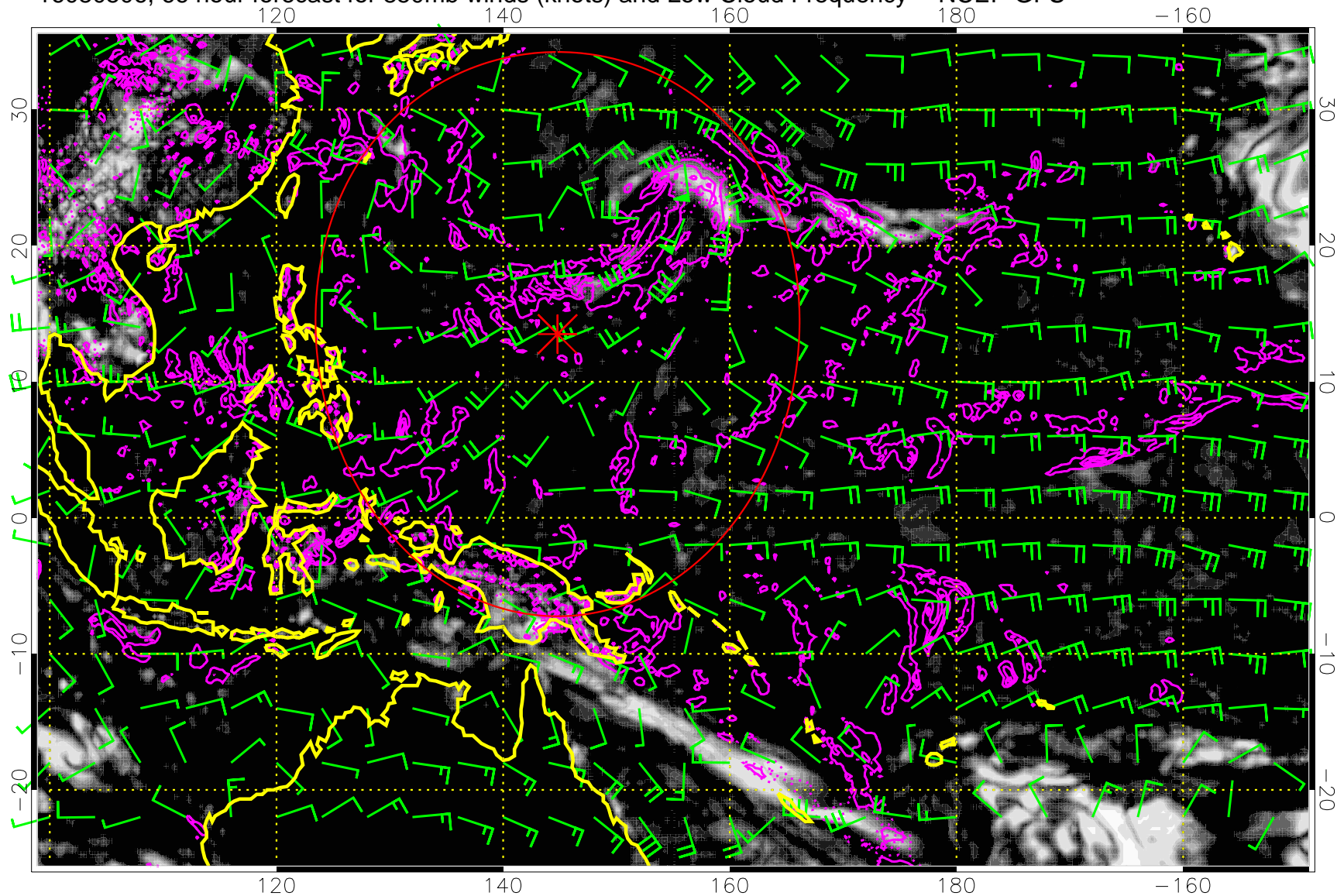
16080500, 60 hour forecast for 850mb winds (knots) and Low Cloud Frequency -- NCEP GFS



Precip (tot dot, conv sol) mm/day 40 mm/day contours, min 20

Range ring of 2304 km

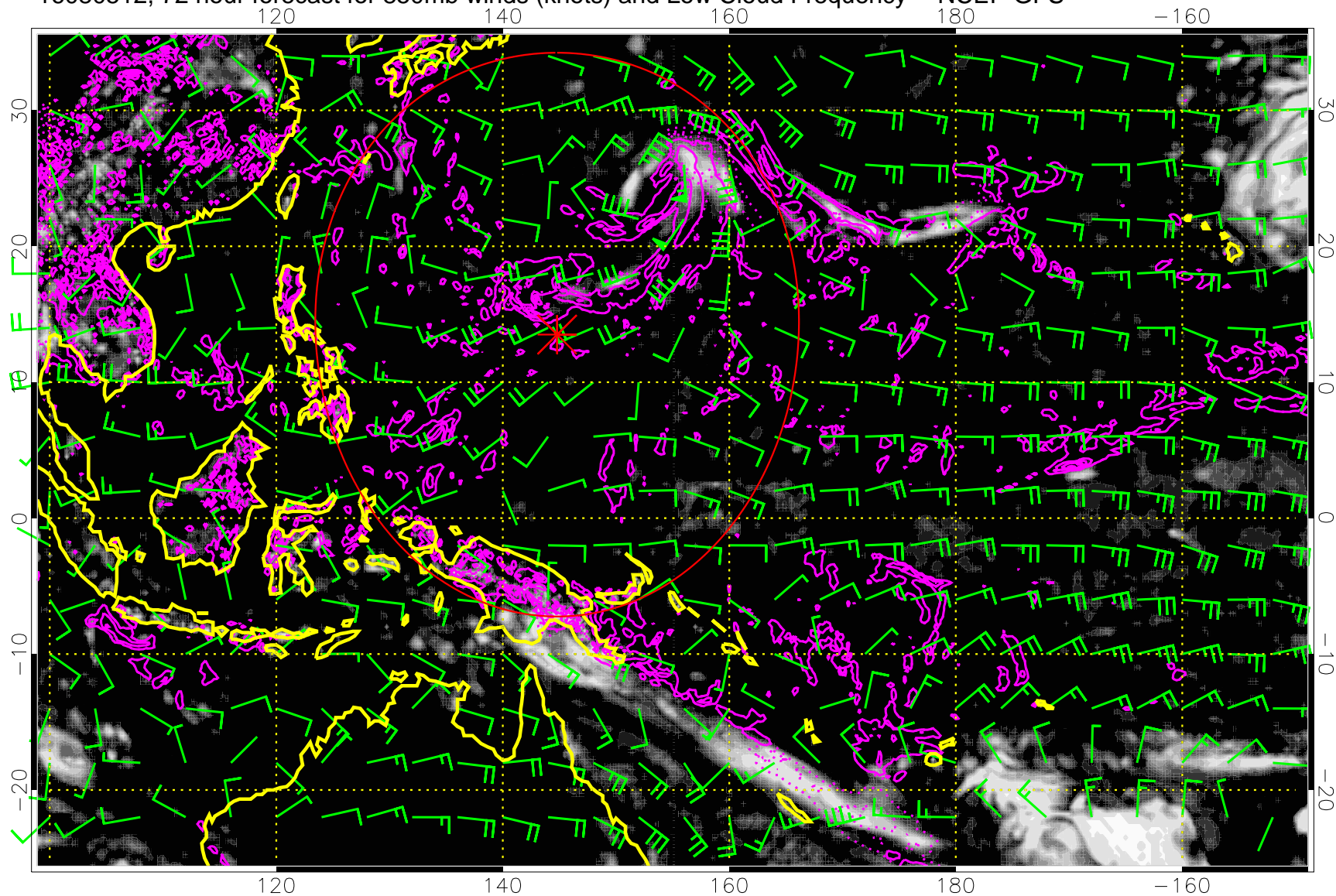
16080506, 66 hour forecast for 850mb winds (knots) and Low Cloud Frequency -- NCEP GFS



Precip (tot dot, conv sol) mm/day 40 mm/day contours, min 20

Range ring of 2304 km

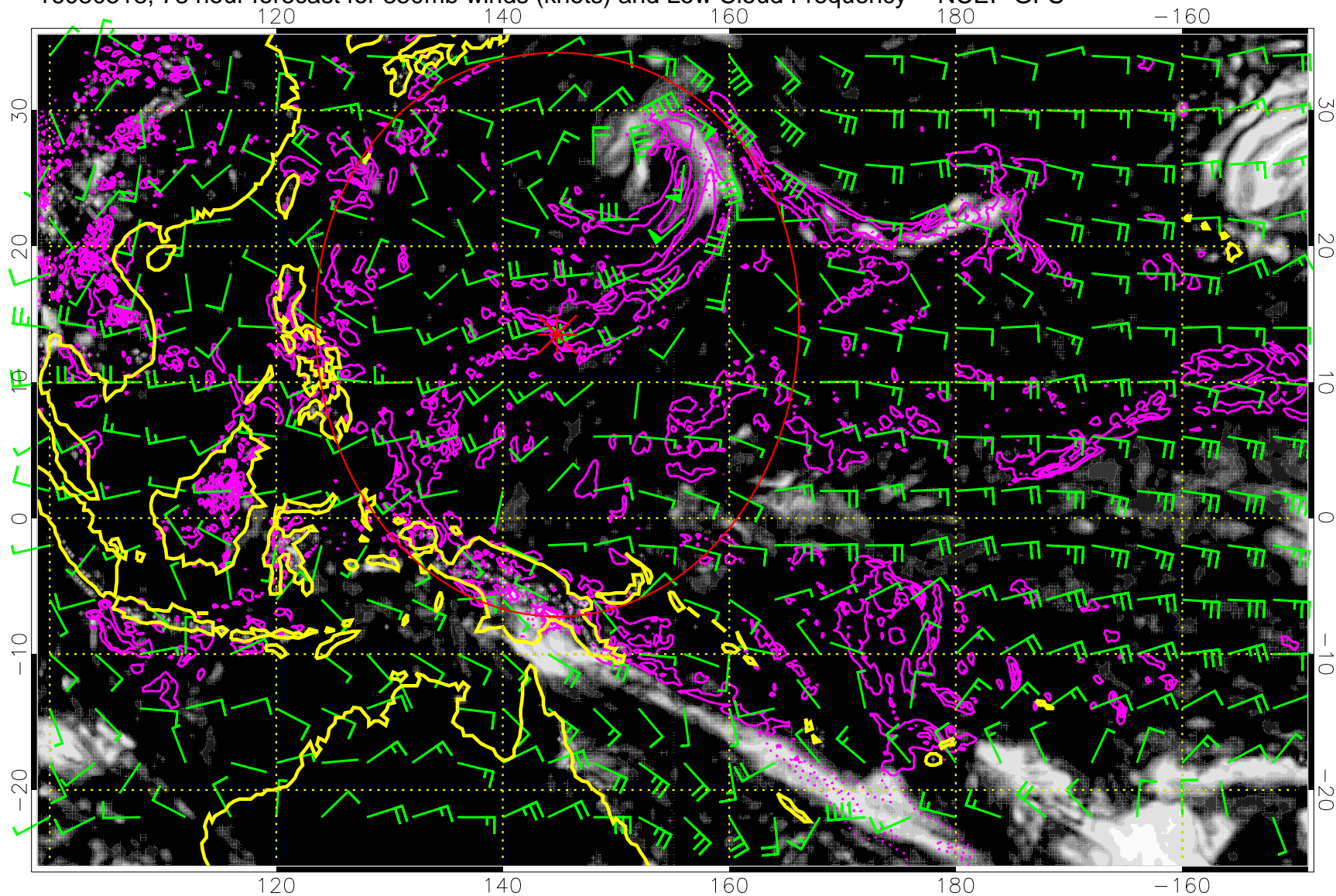
16080512, 72 hour forecast for 850mb winds (knots) and Low Cloud Frequency -- NCEP GFS



Precip (tot dot, conv sol) mm/day 40 mm/day contours, min 20

Range ring of 2304 km

16080518, 78 hour forecast for 850mb winds (knots) and Low Cloud Frequency -- NCEP GFS

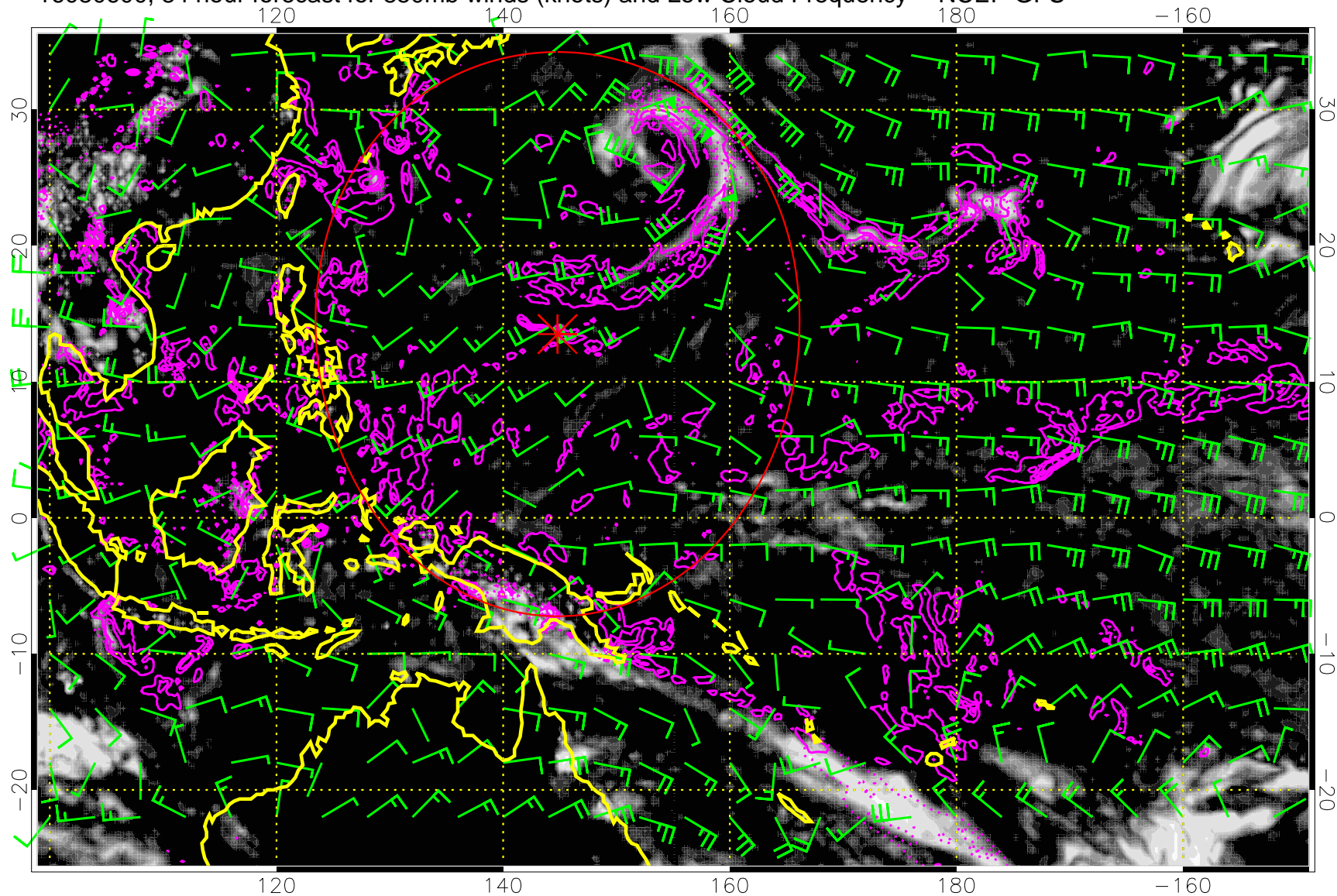


0.0 0.2 0.4 0.6 0.8 1.0
Low Cloud Frequency

Precip (tot dot, conv sol) mm/day 40 mm/day contours, min 20

Range ring of 2304 km

16080600, 84 hour forecast for 850mb winds (knots) and Low Cloud Frequency -- NCEP GFS

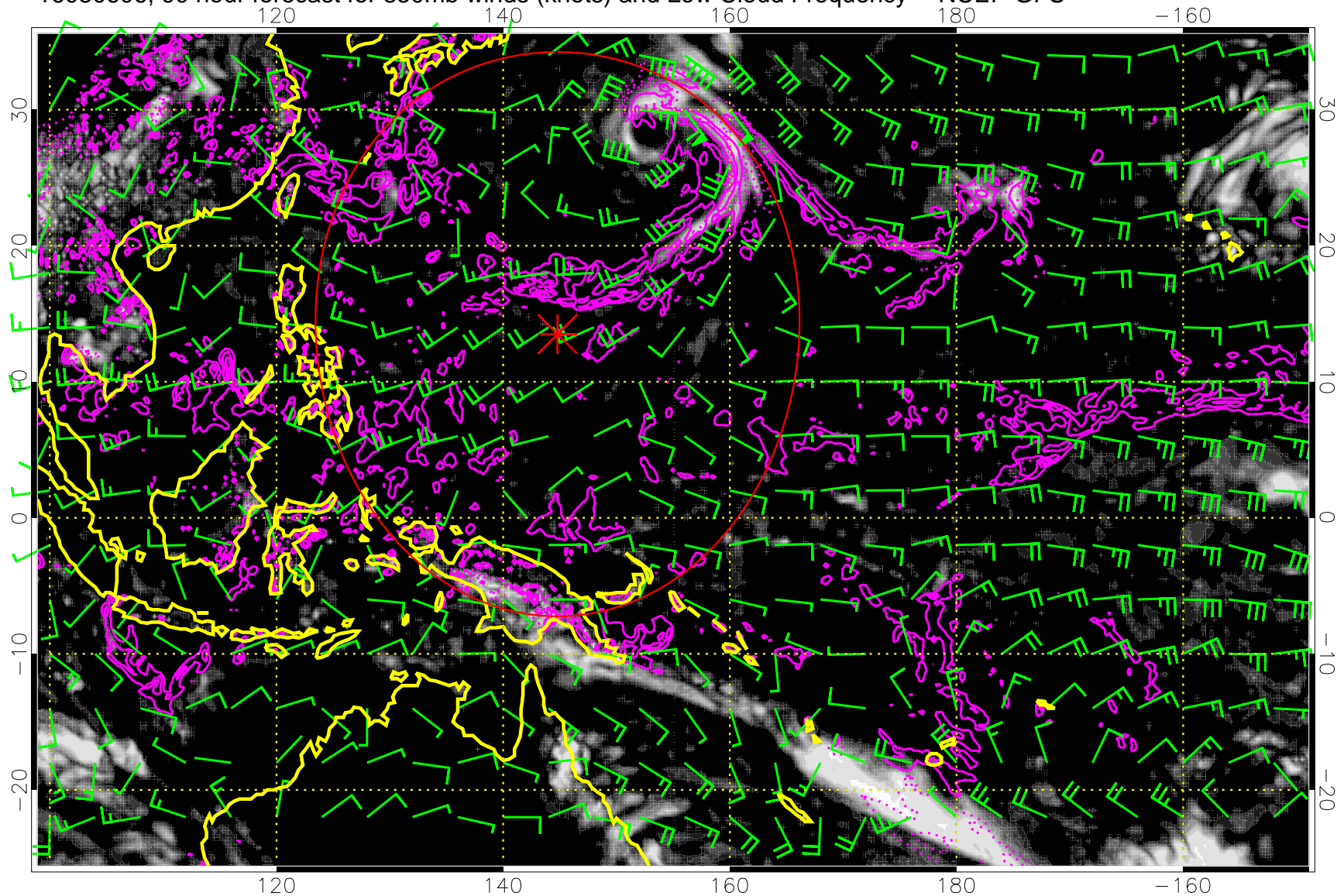


0.0 0.2 0.4 0.6 0.8 1.0
Low Cloud Frequency

Precip (tot dot, conv sol) mm/day 40 mm/day contours, min 20

Range ring of 2304 km

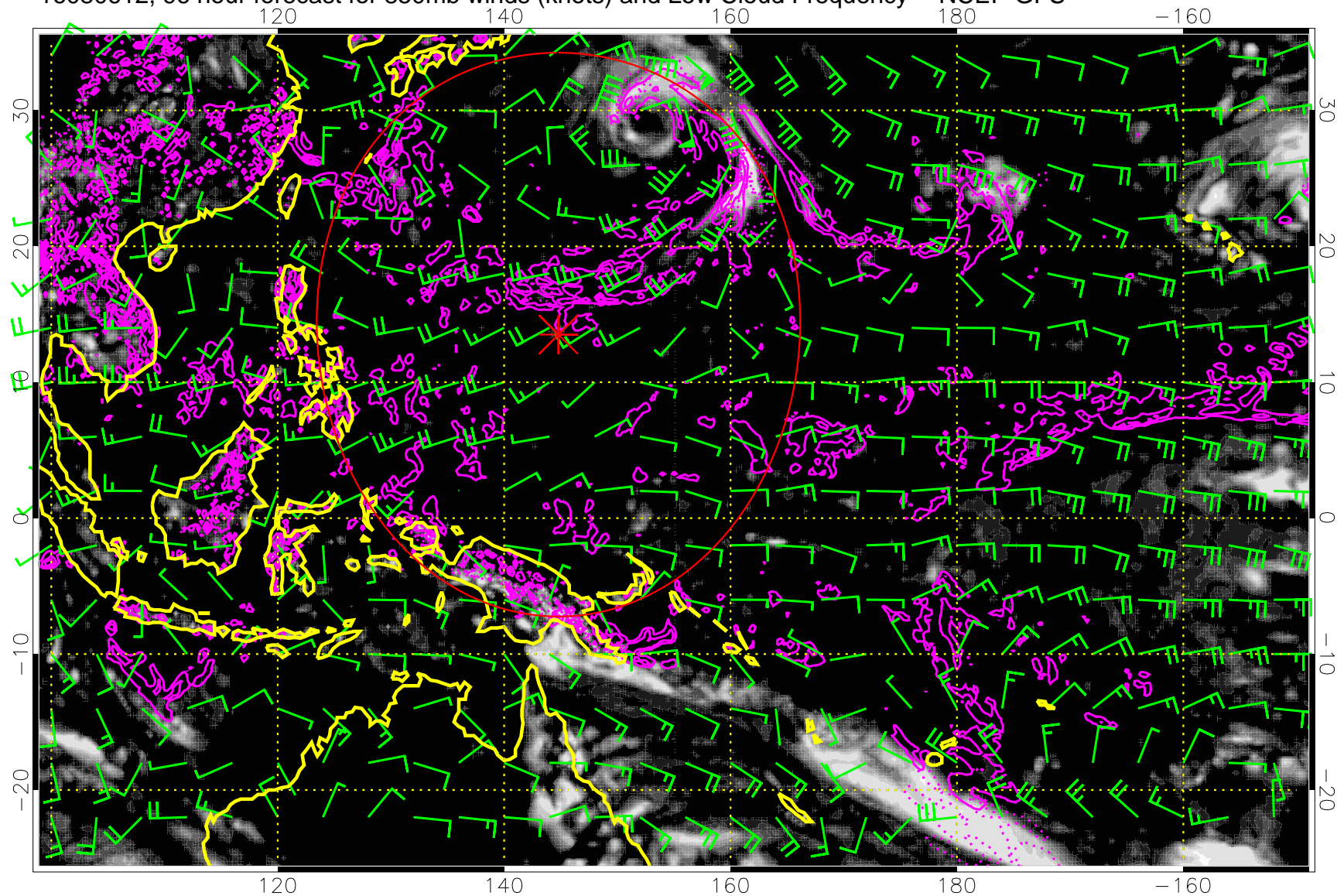
16080606, 90 hour forecast for 850mb winds (knots) and Low Cloud Frequency -- NCEP GFS



Precip (tot dot, conv sol) mm/day 40 mm/day contours, min 20

Range ring of 2304 km

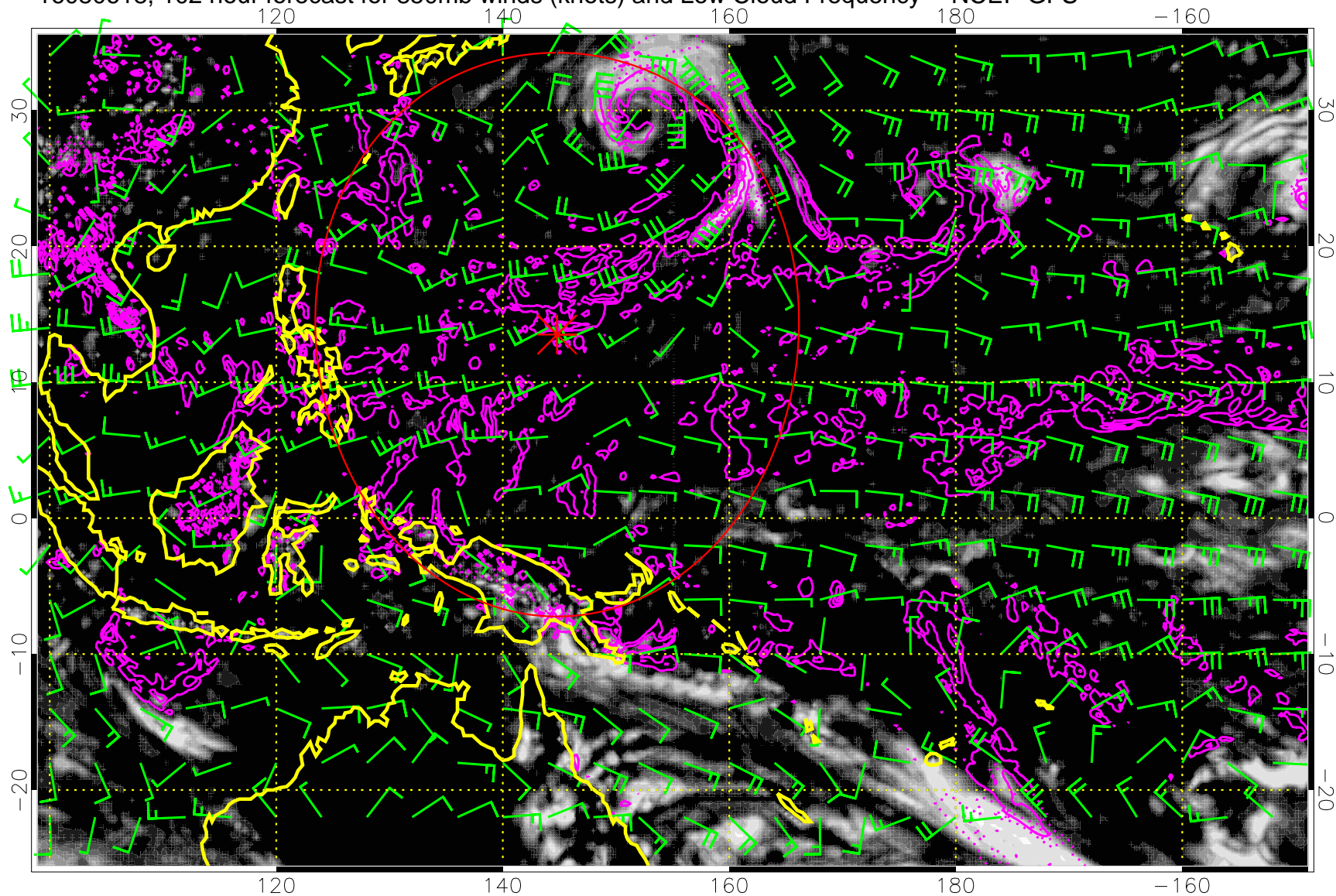
16080612, 96 hour forecast for 850mb winds (knots) and Low Cloud Frequency -- NCEP GFS



Precip (tot dot, conv sol) mm/day 40 mm/day contours, min 20

Range ring of 2304 km

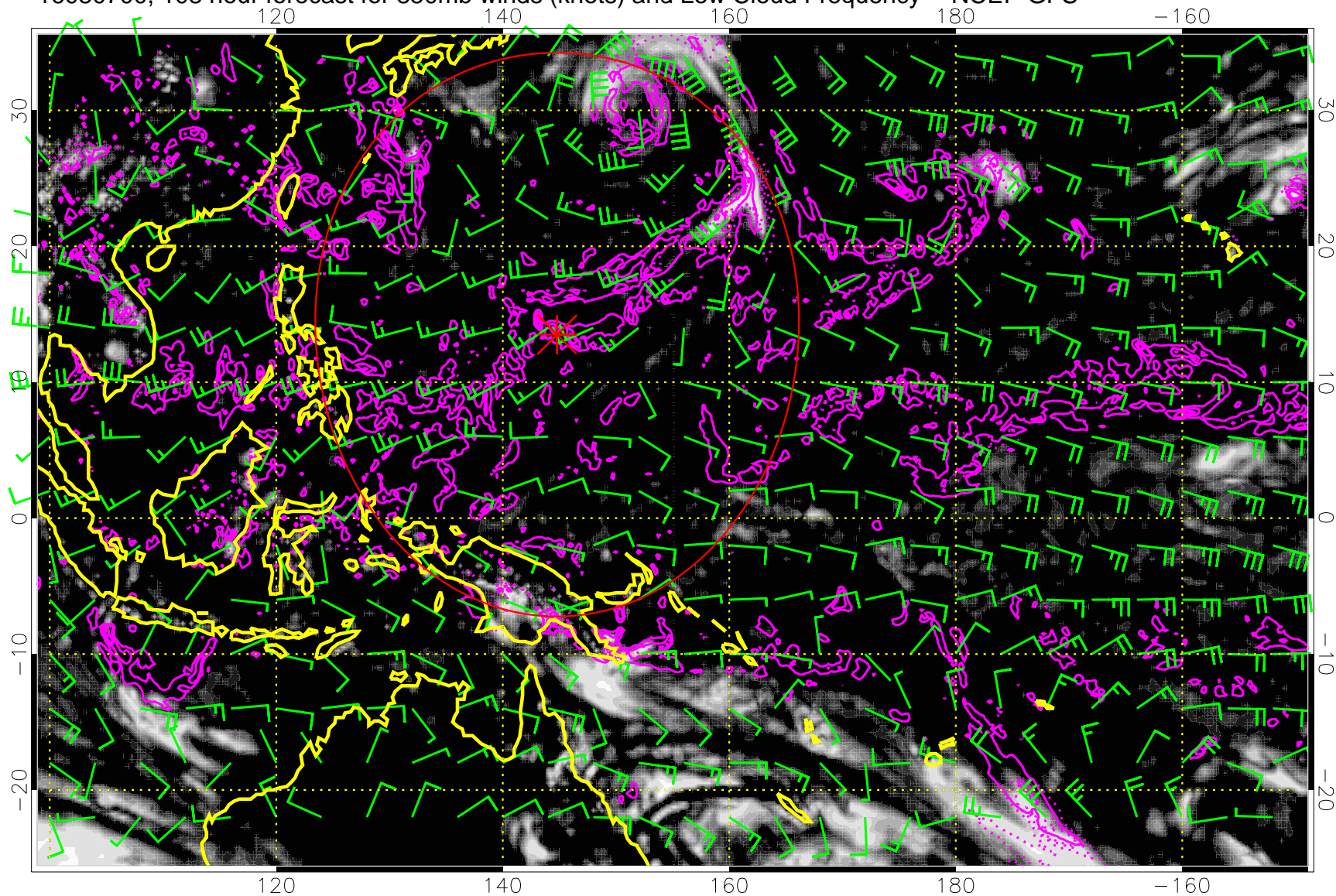
16080618, 102 hour forecast for 850mb winds (knots) and Low Cloud Frequency -- NCEP GFS



Precip (tot dot, conv sol) mm/day 40 mm/day contours, min 20

Range ring of 2304 km

16080700, 108 hour forecast for 850mb winds (knots) and Low Cloud Frequency -- NCEP GFS

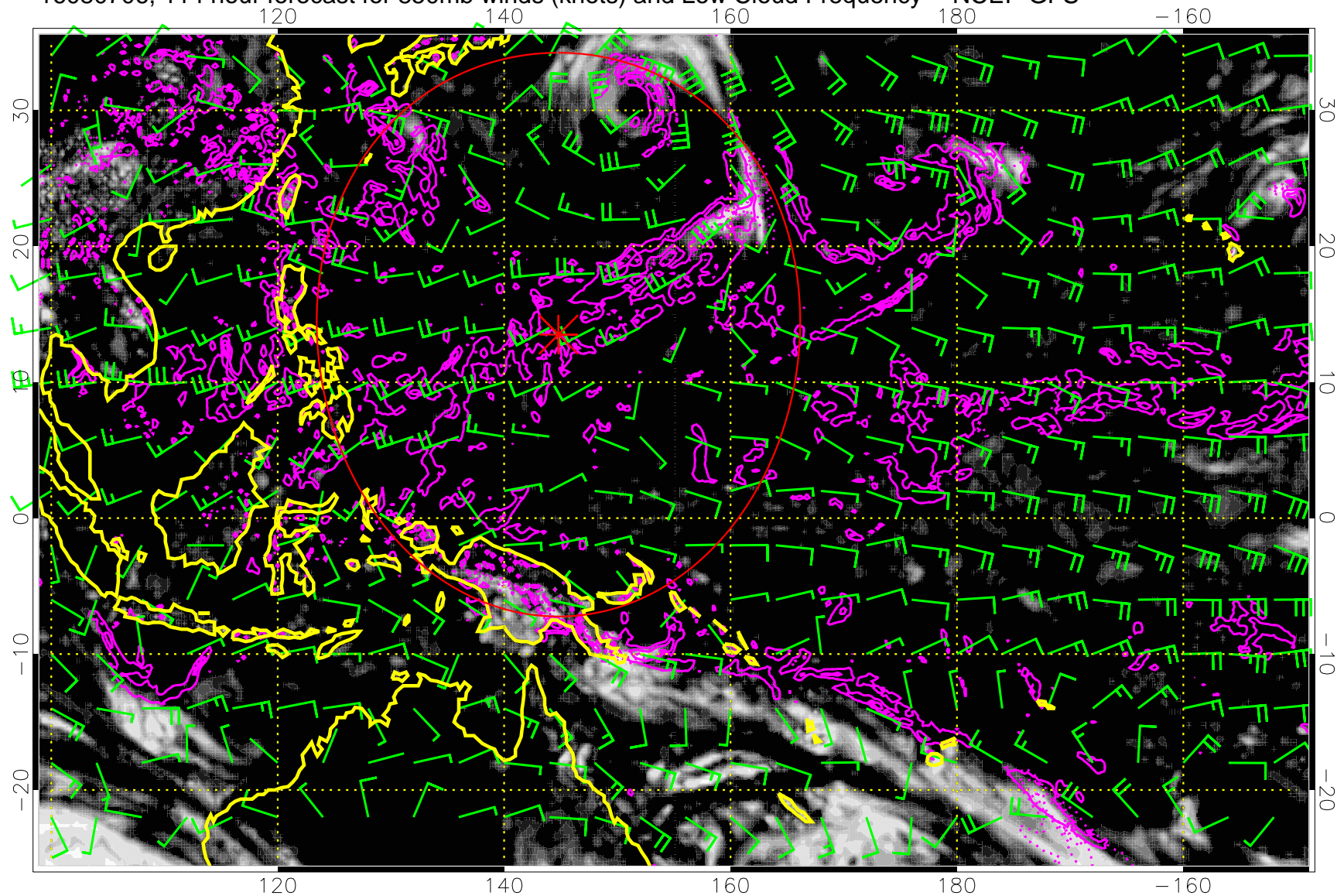


0.0 0.2 0.4 0.6 0.8 1.0
Low Cloud Frequency

Precip (tot dot, conv sol) mm/day 40 mm/day contours, min 20

Range ring of 2304 km

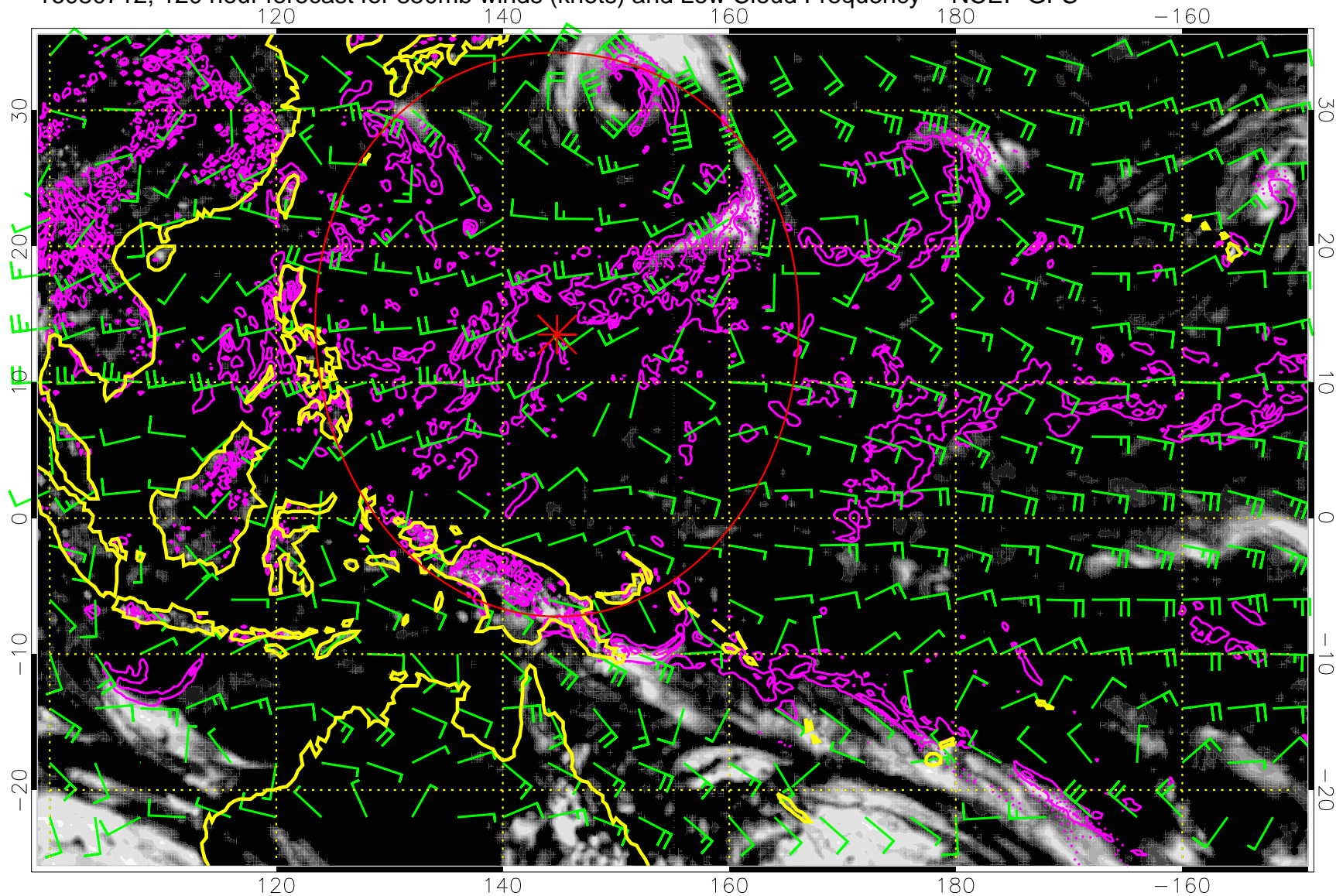
16080706, 114 hour forecast for 850mb winds (knots) and Low Cloud Frequency -- NCEP GFS



Precip (tot dot, conv sol) mm/day 40 mm/day contours, min 20

Range ring of 2304 km

16080712, 120 hour forecast for 850mb winds (knots) and Low Cloud Frequency -- NCEP GFS



Precip (tot dot, conv sol) mm/day 40 mm/day contours, min 20

Range ring of 2304 km