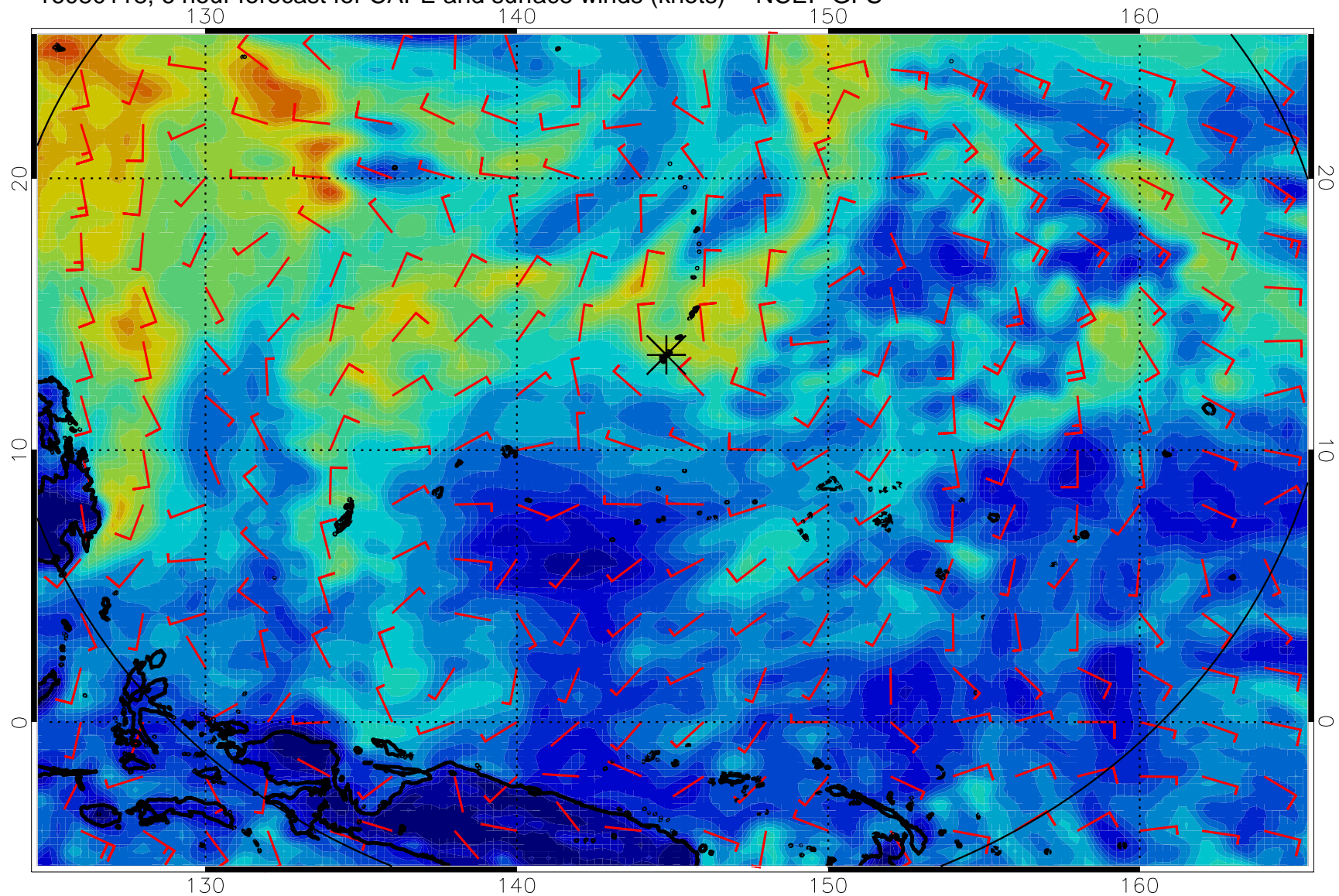
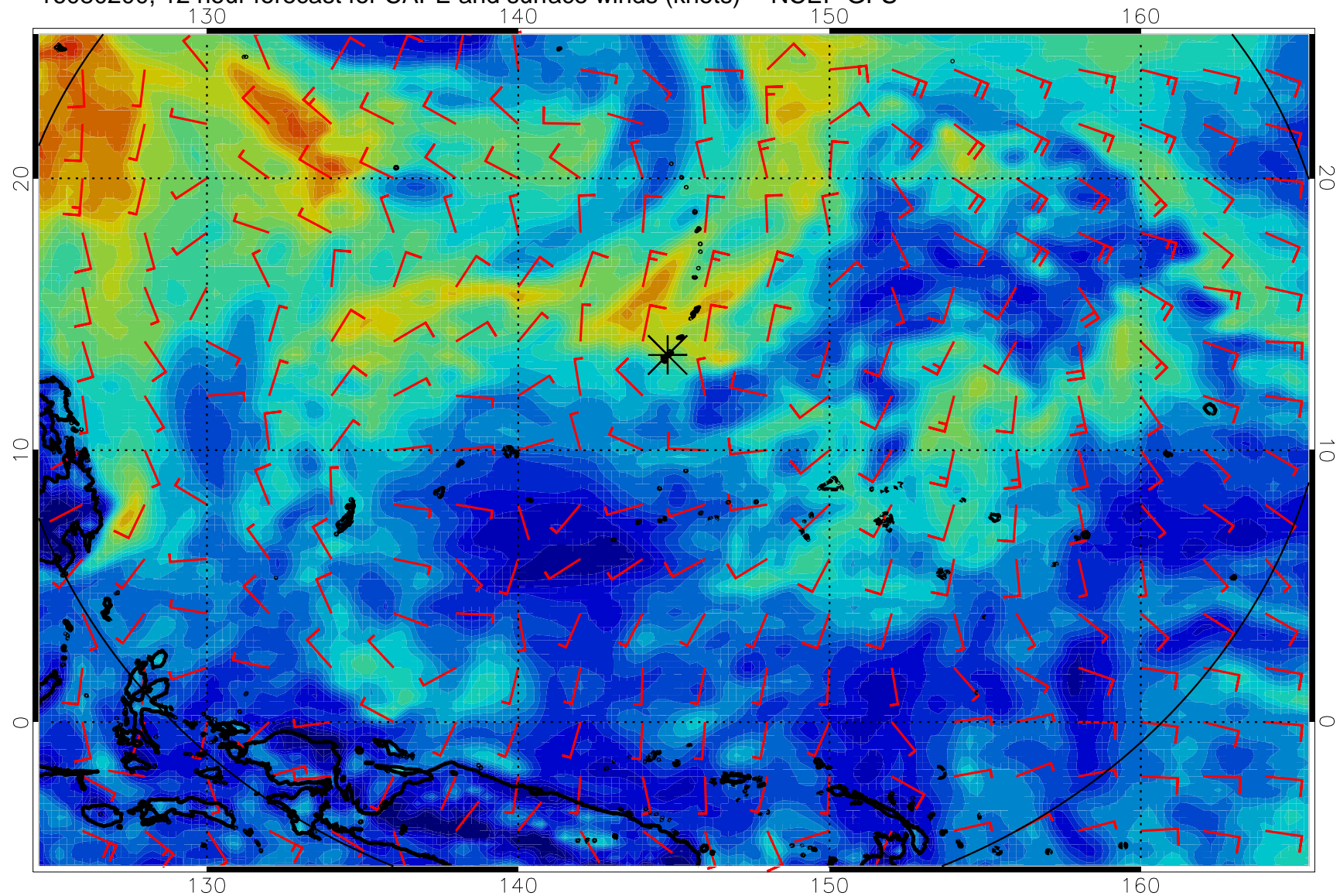


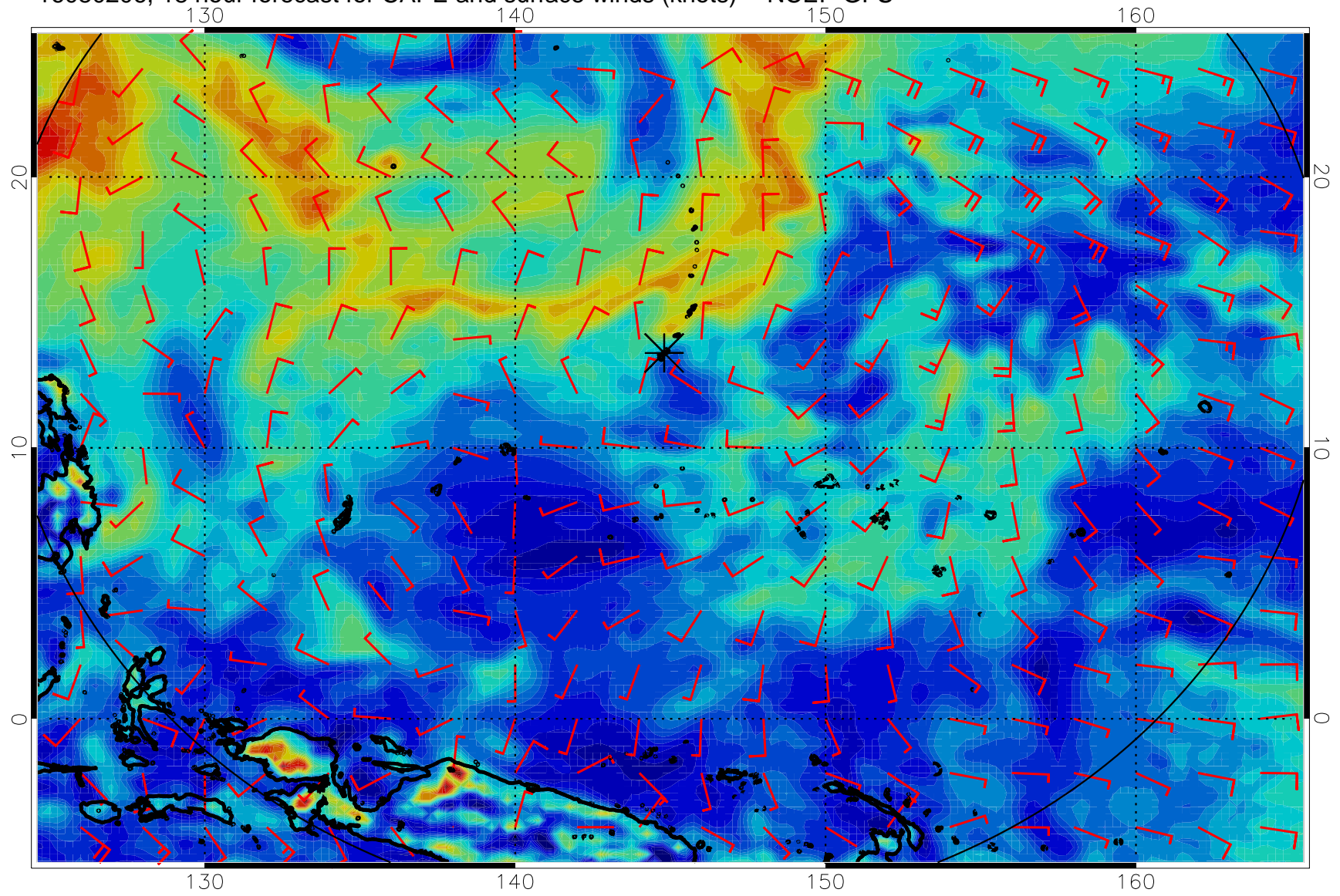
16080118, 6 hour forecast for CAPE and surface winds (knots) -- NCEP GFS



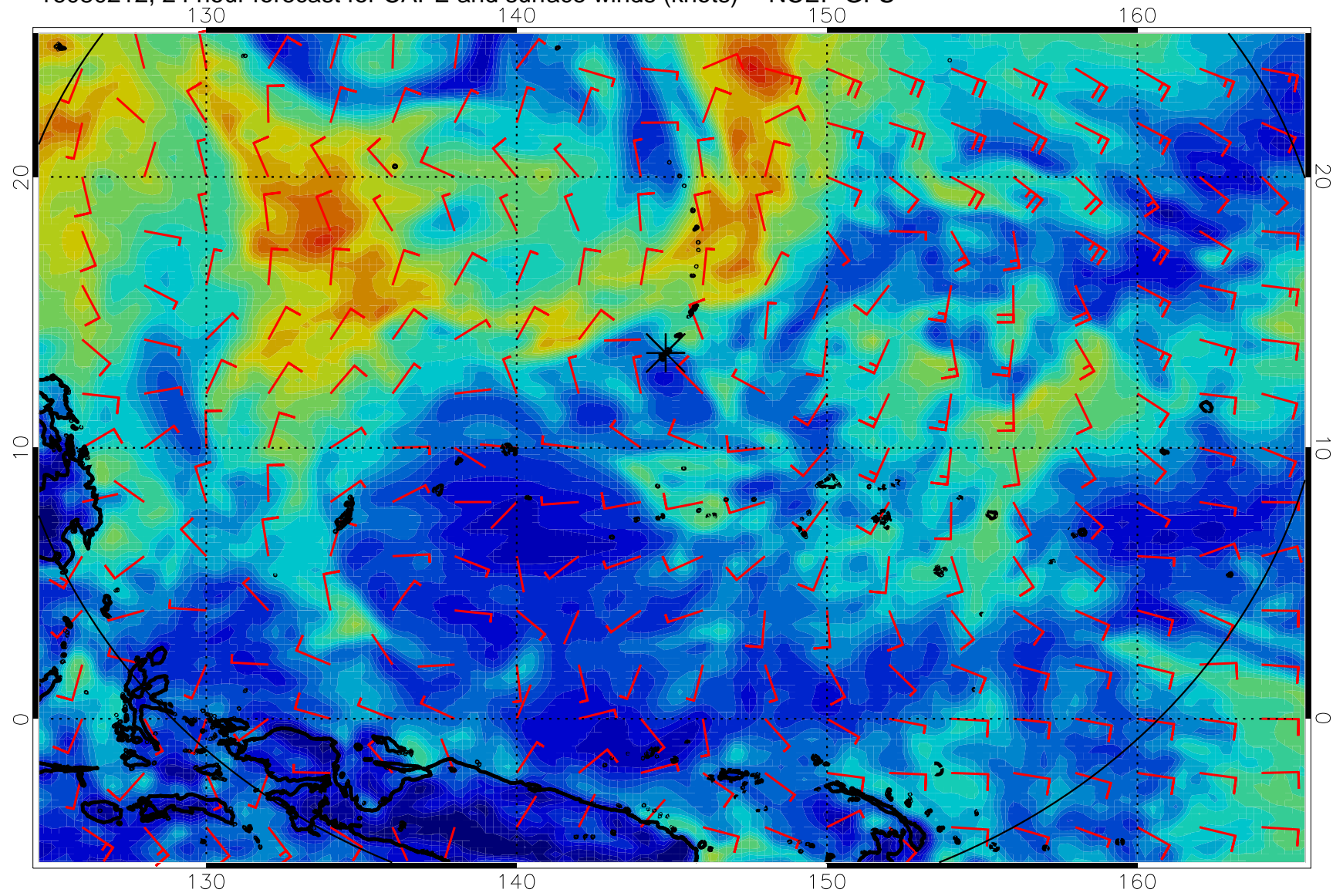
16080200, 12 hour forecast for CAPE and surface winds (knots) -- NCEP GFS



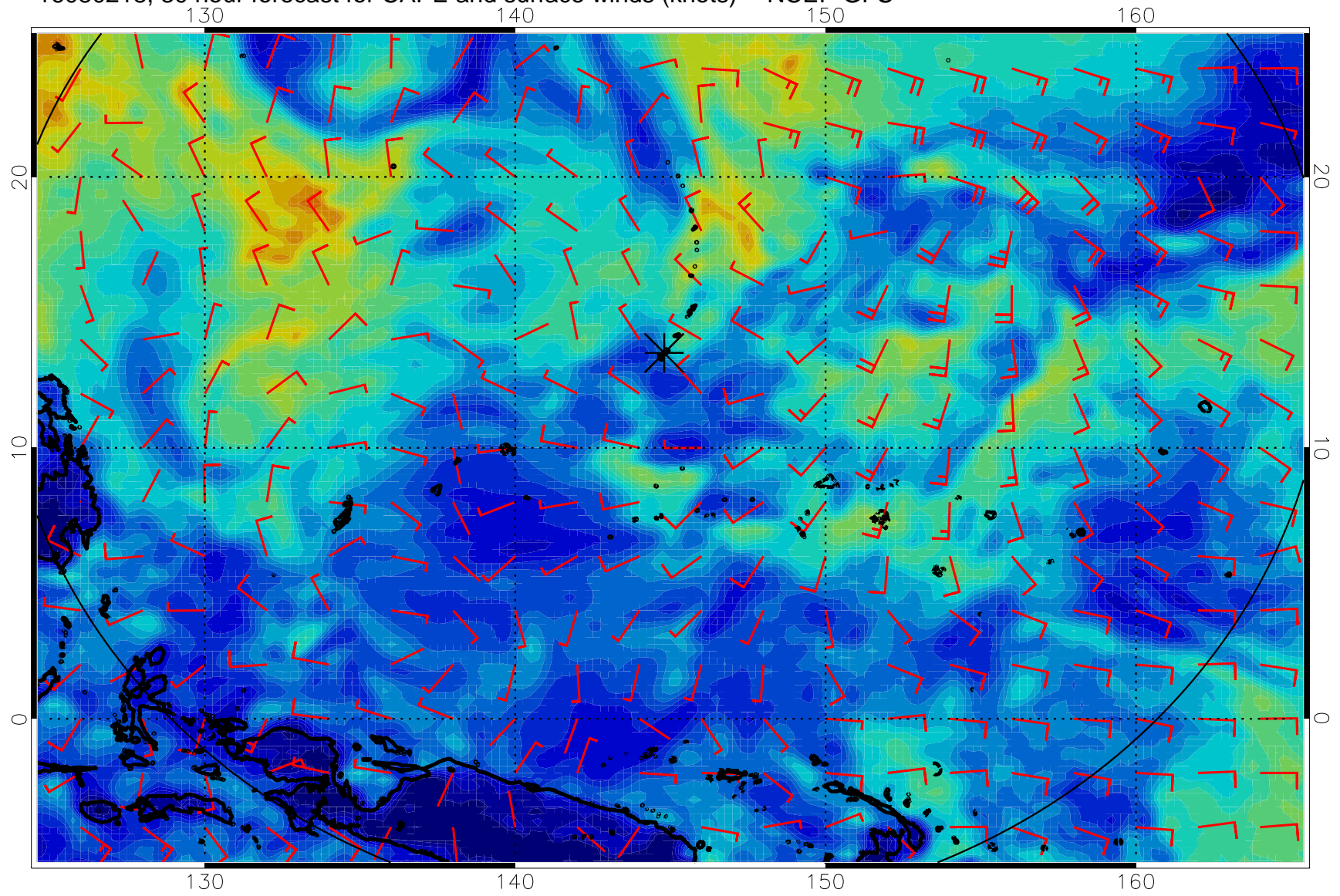
16080206, 18 hour forecast for CAPE and surface winds (knots) -- NCEP GFS



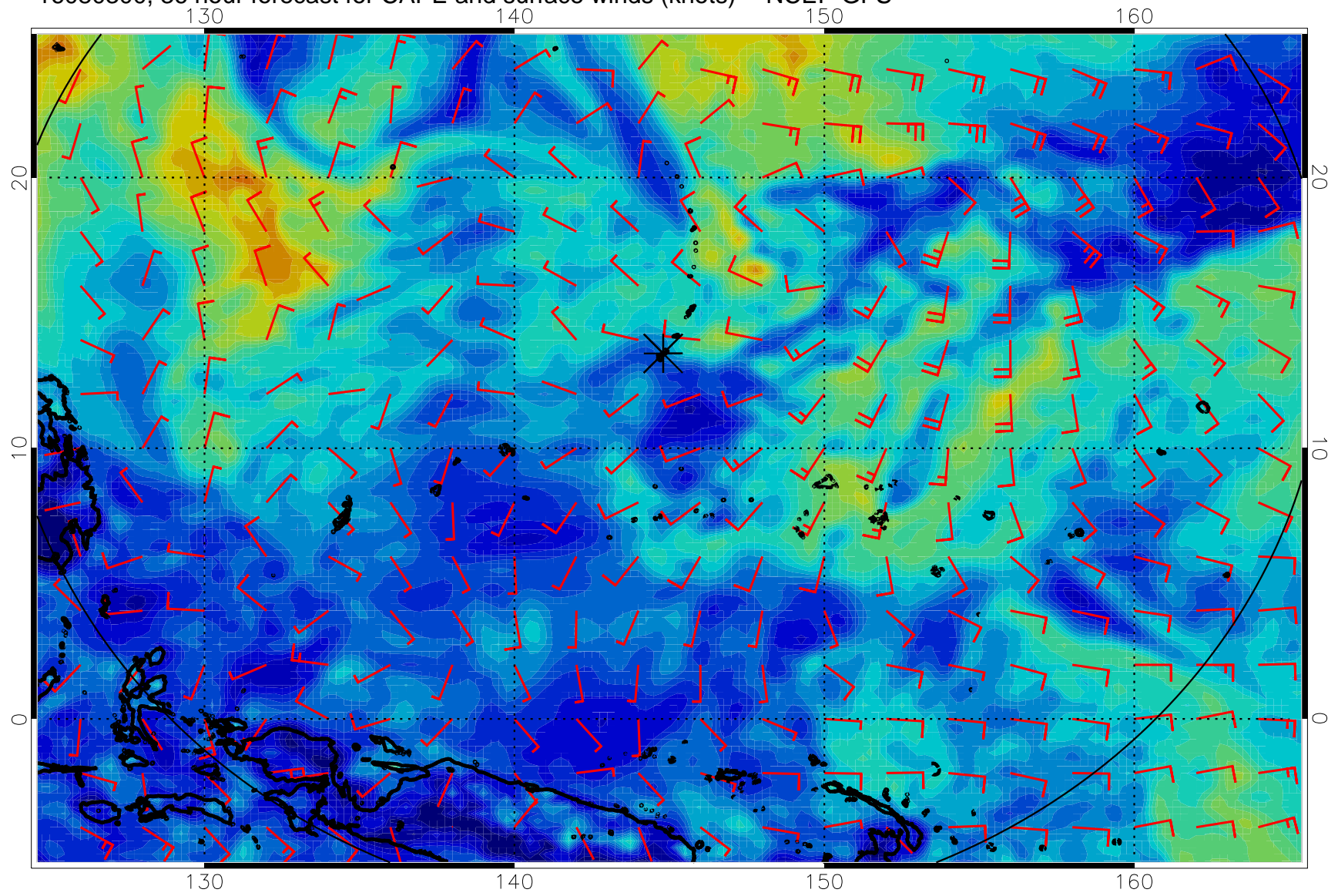
16080212, 24 hour forecast for CAPE and surface winds (knots) -- NCEP GFS



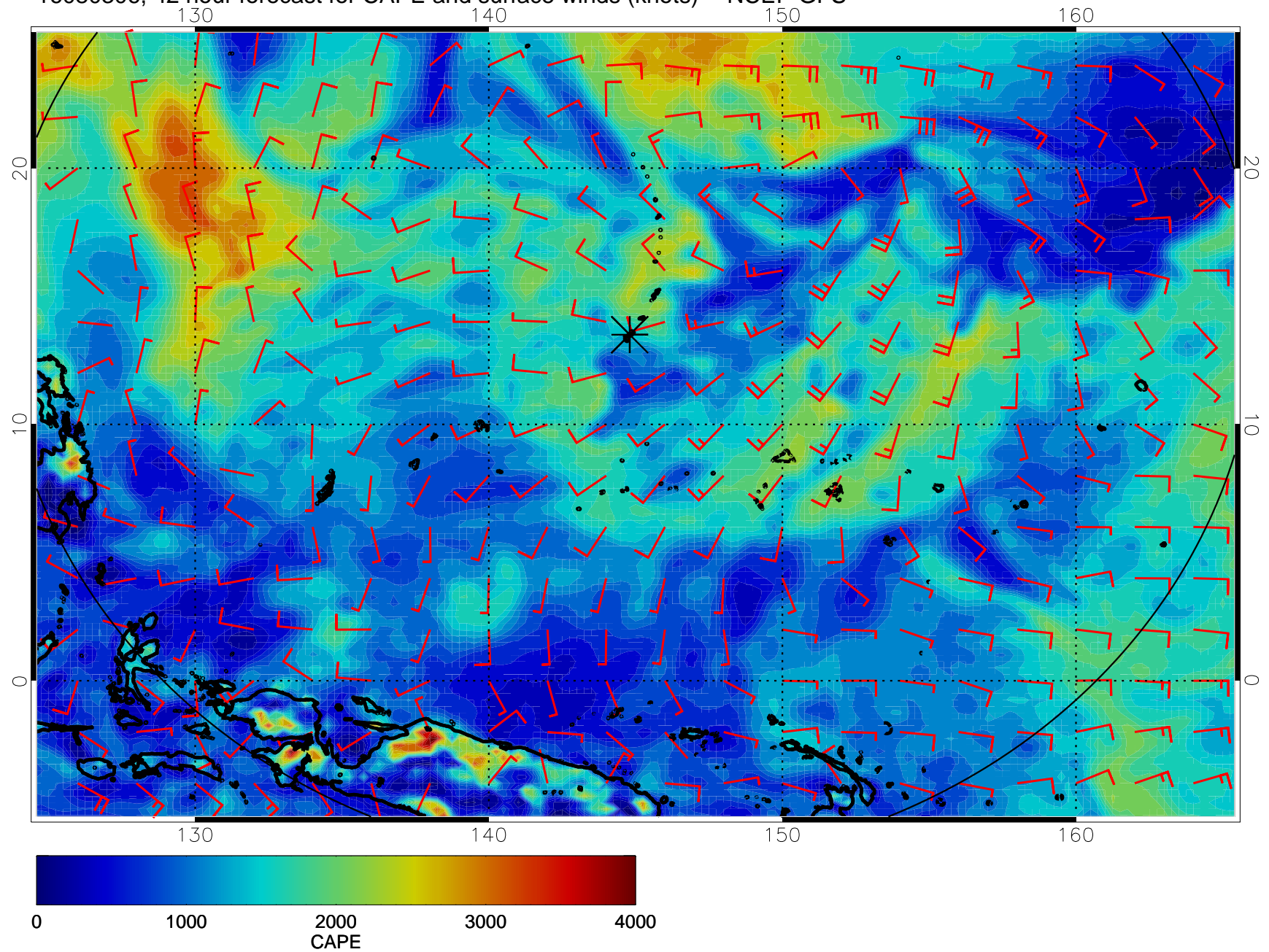
16080218, 30 hour forecast for CAPE and surface winds (knots) -- NCEP GFS



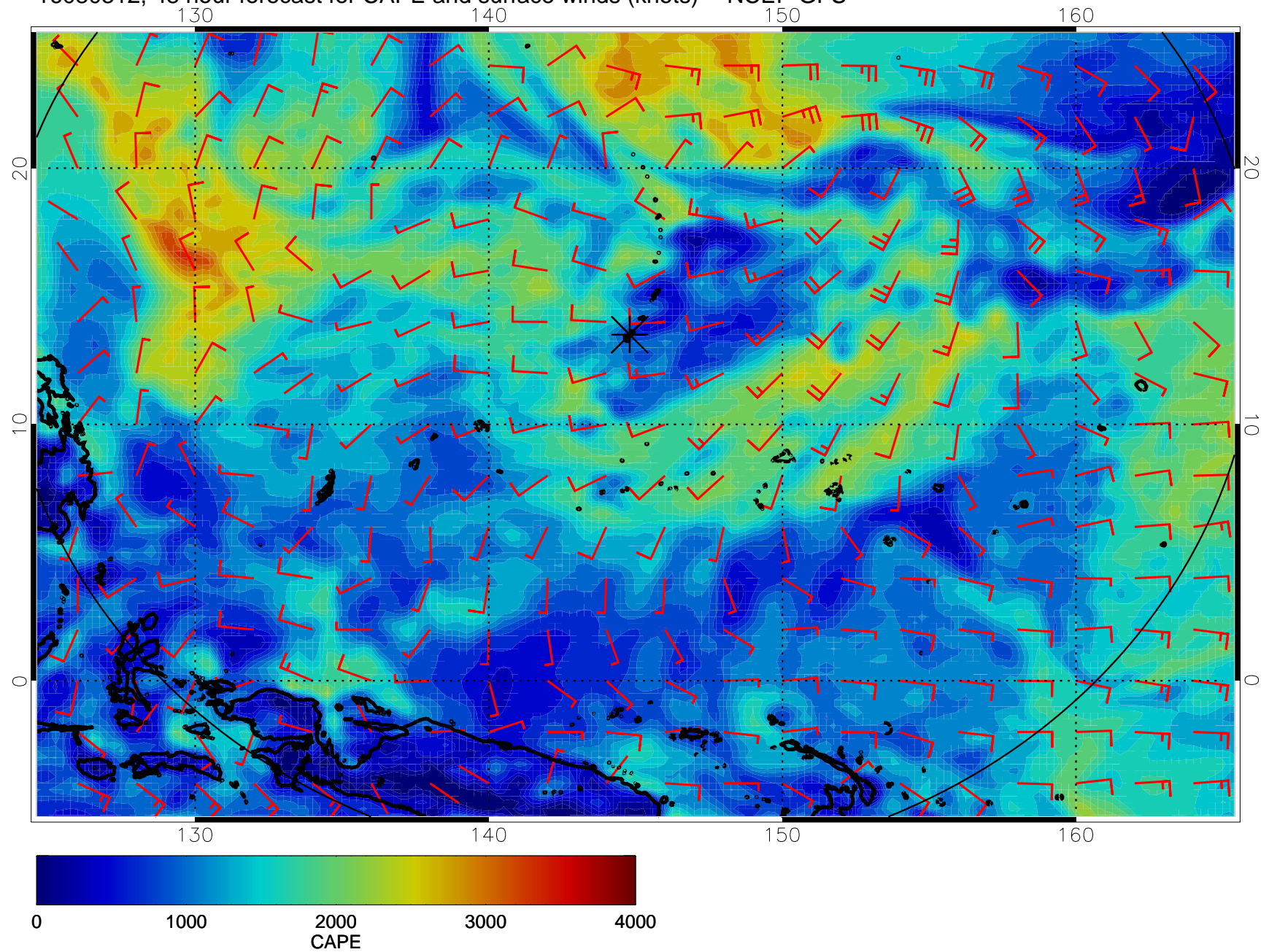
16080300, 36 hour forecast for CAPE and surface winds (knots) -- NCEP GFS



16080306, 42 hour forecast for CAPE and surface winds (knots) -- NCEP GFS

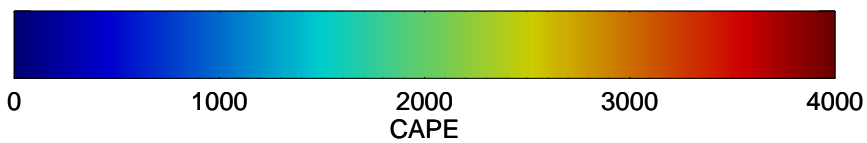
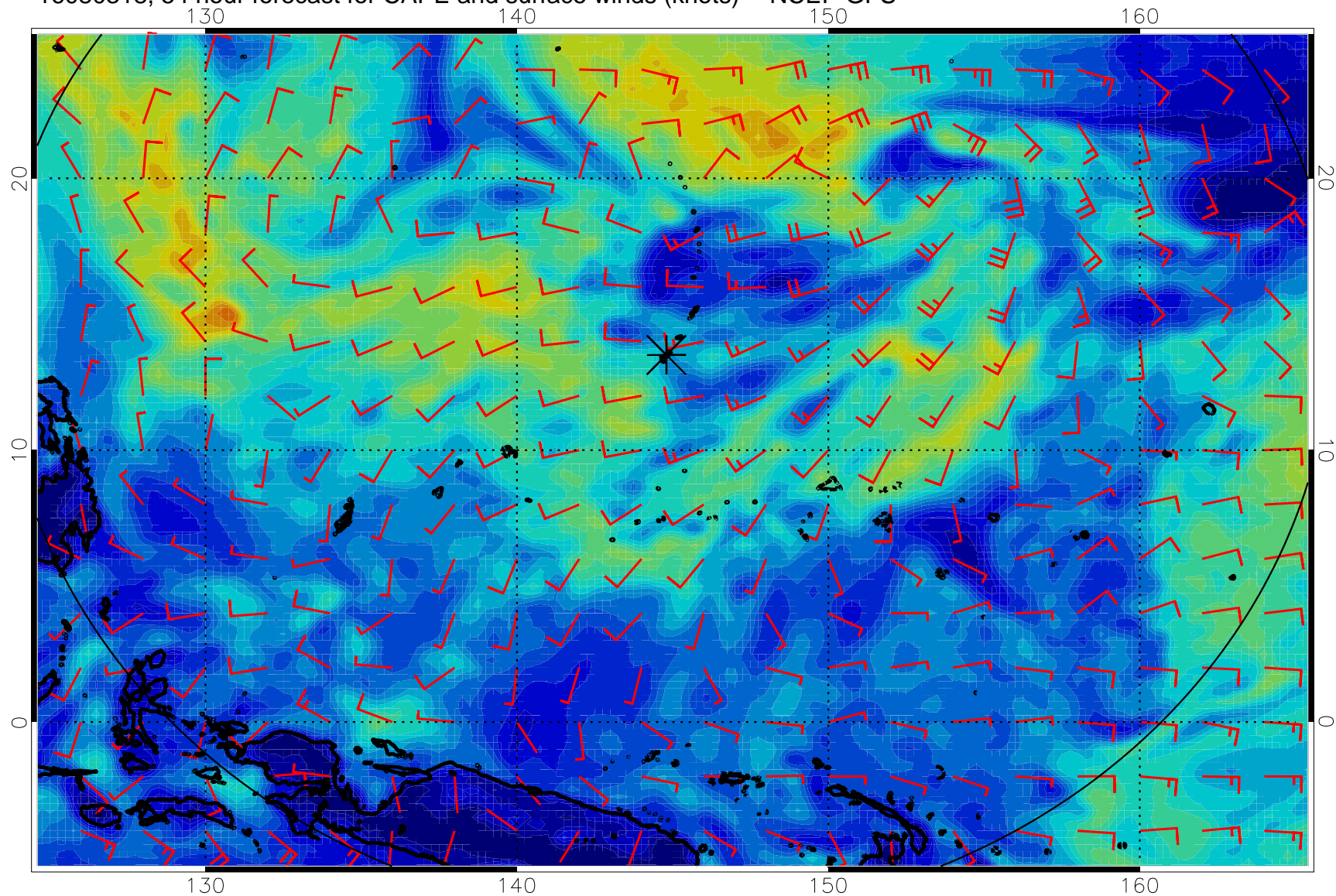


16080312, 48 hour forecast for CAPE and surface winds (knots) -- NCEP GFS

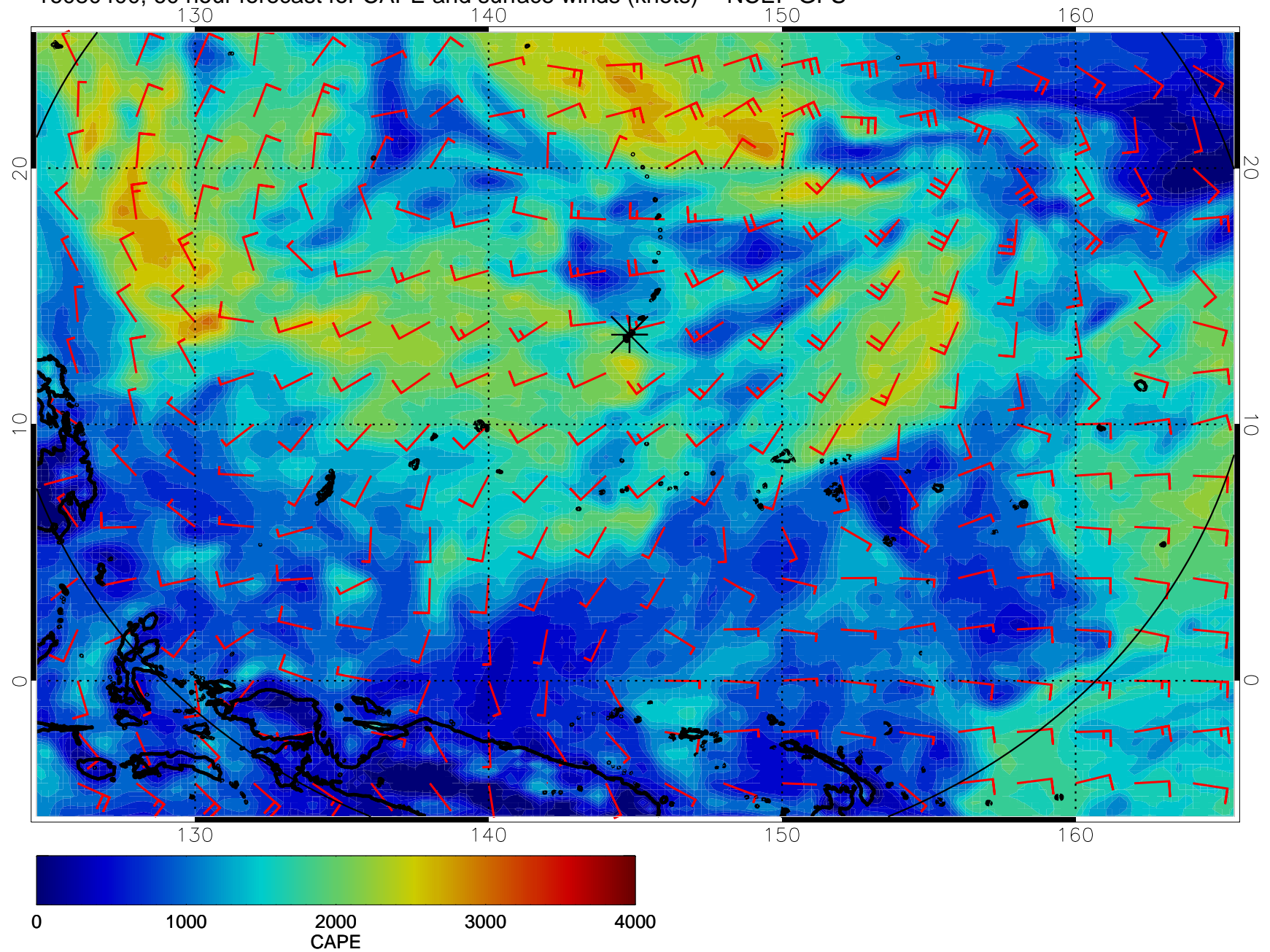




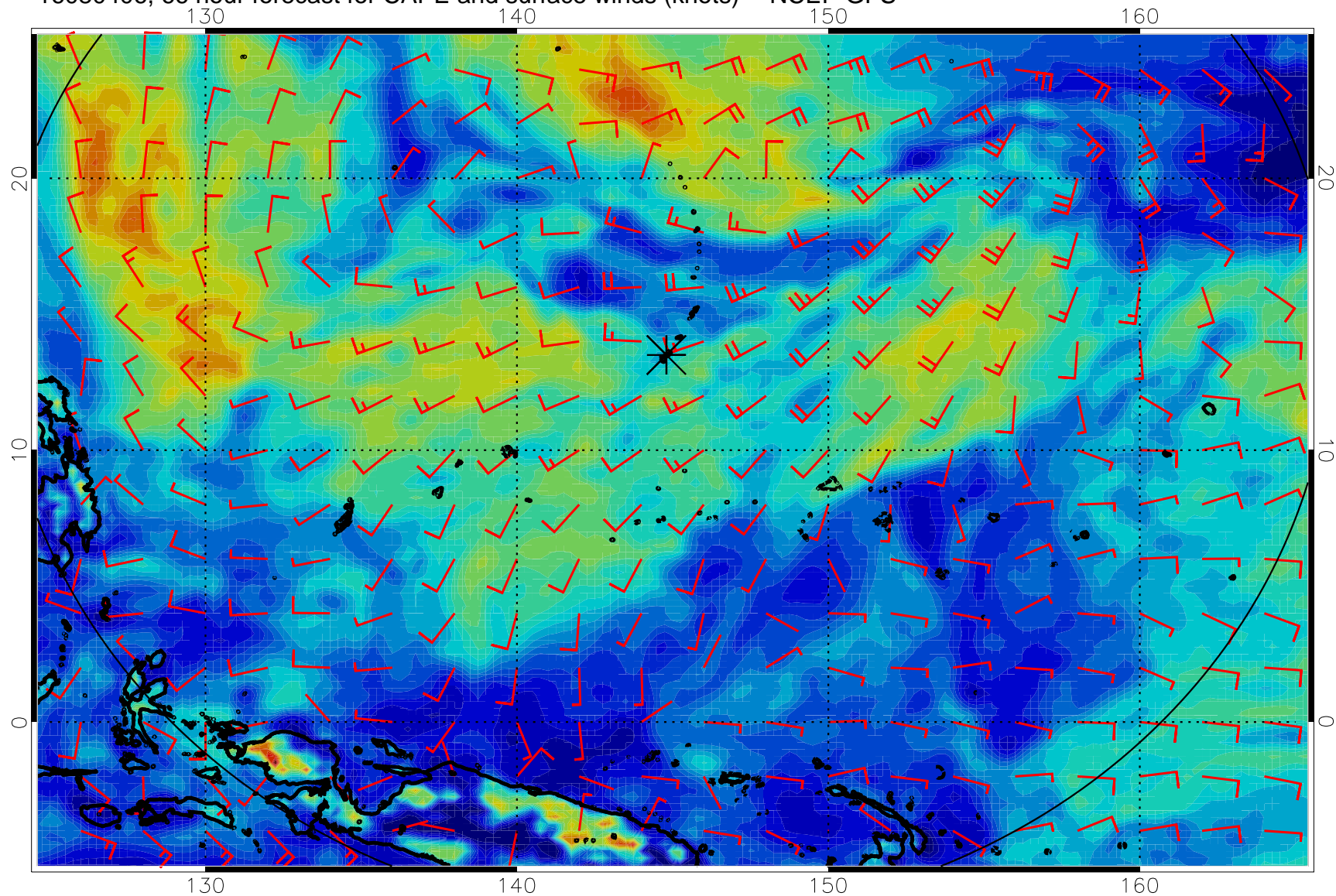
16080318, 54 hour forecast for CAPE and surface winds (knots) -- NCEP GFS



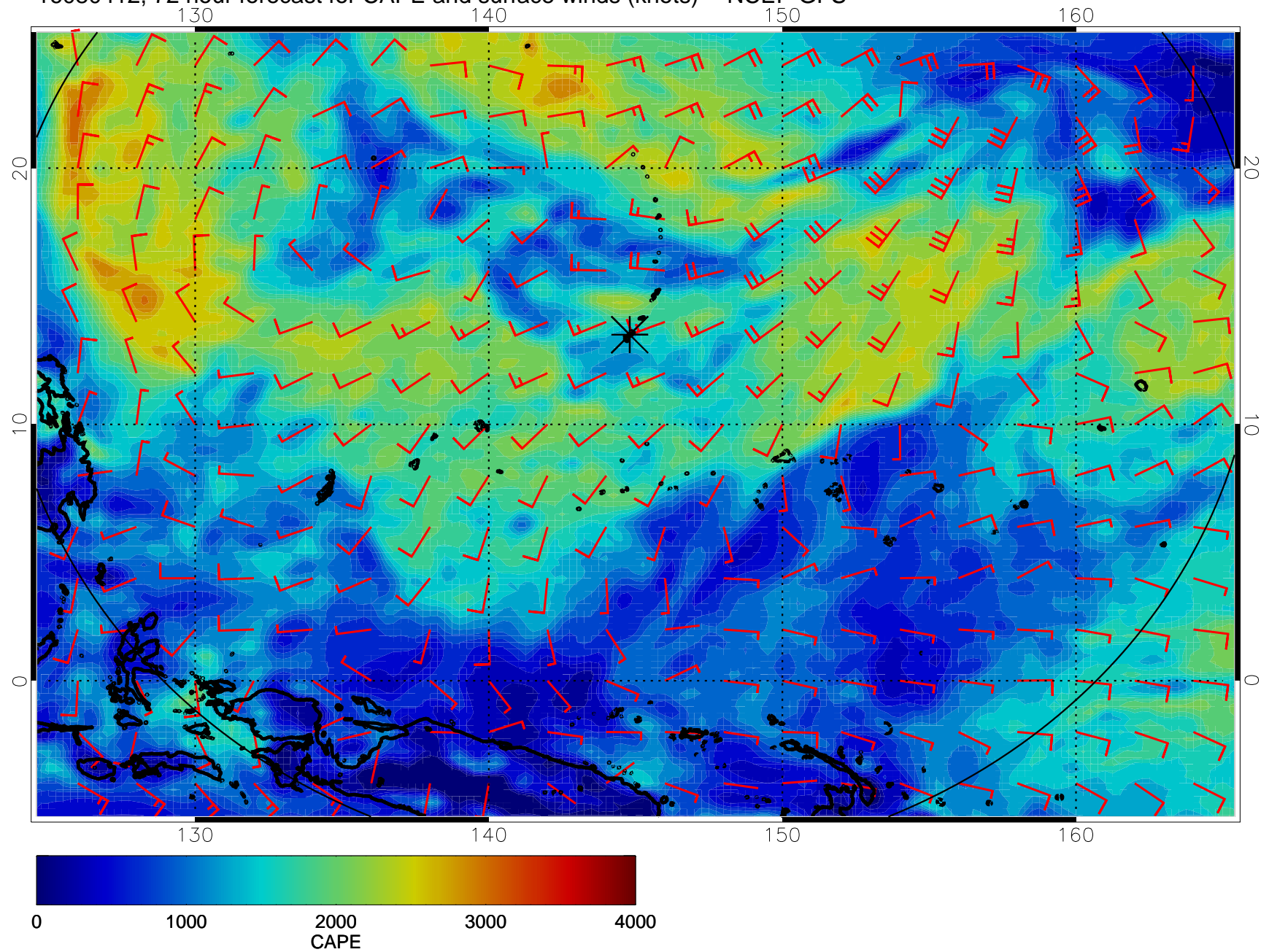
16080400, 60 hour forecast for CAPE and surface winds (knots) -- NCEP GFS



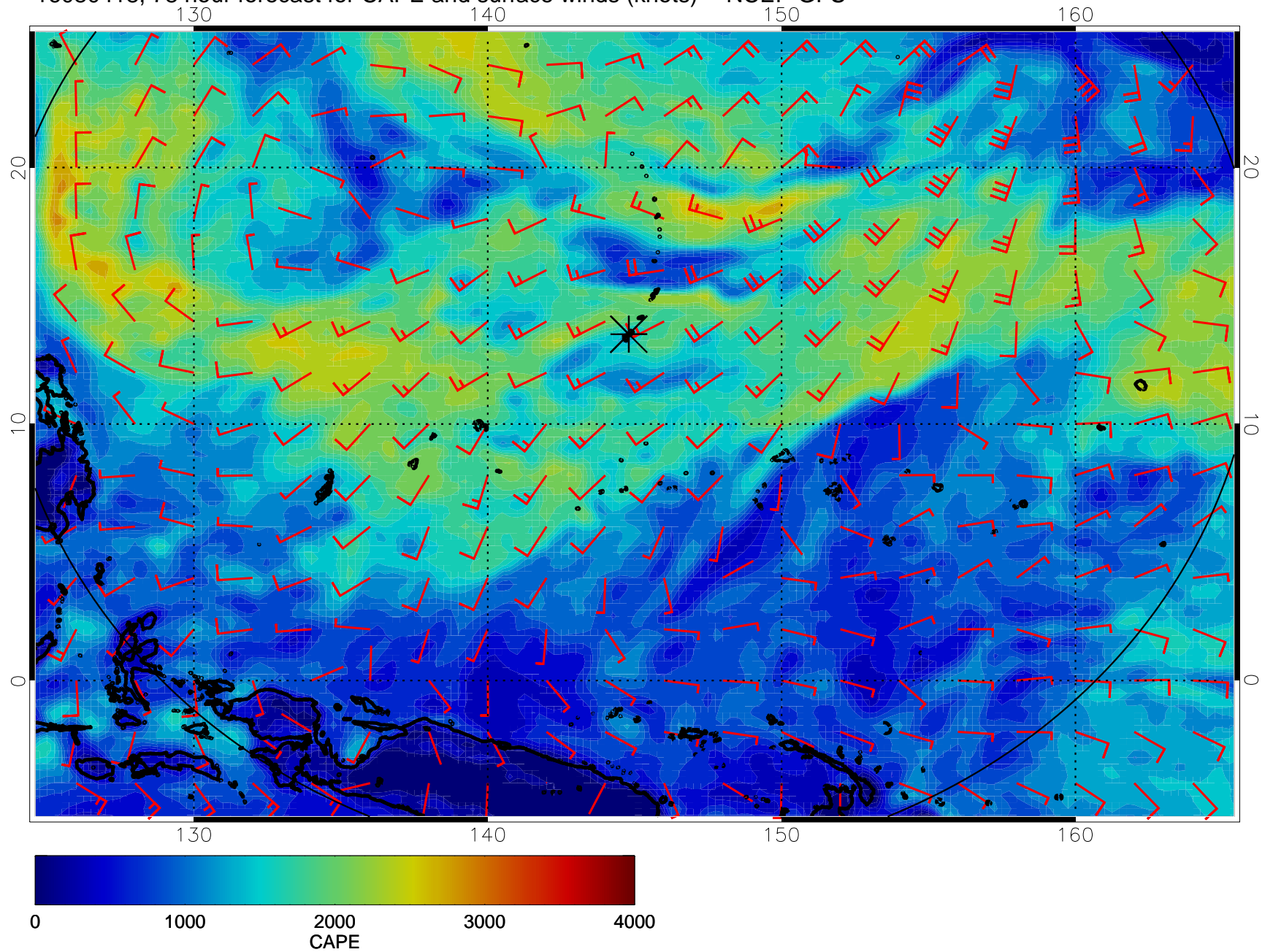
16080406, 66 hour forecast for CAPE and surface winds (knots) -- NCEP GFS



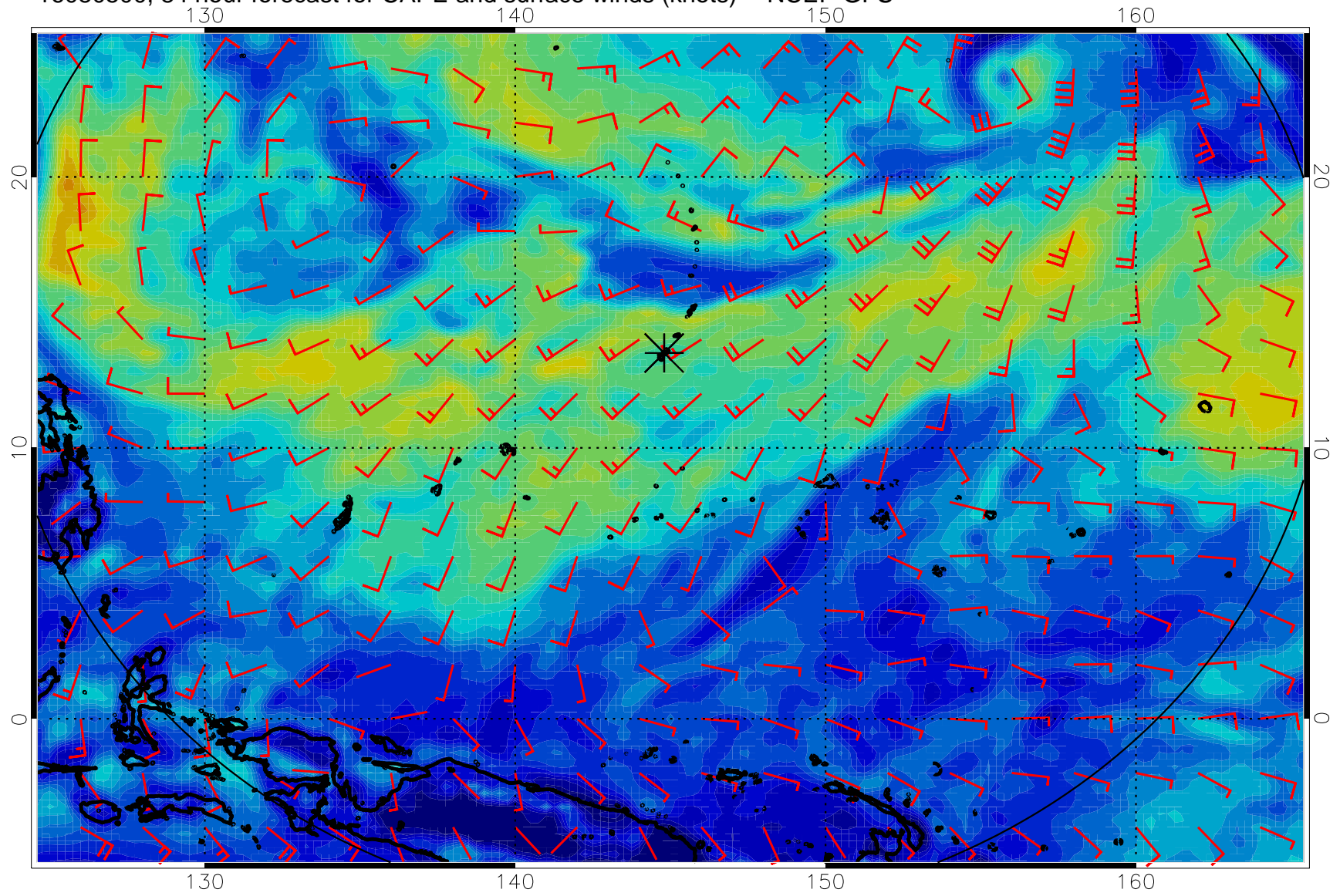
16080412, 72 hour forecast for CAPE and surface winds (knots) -- NCEP GFS



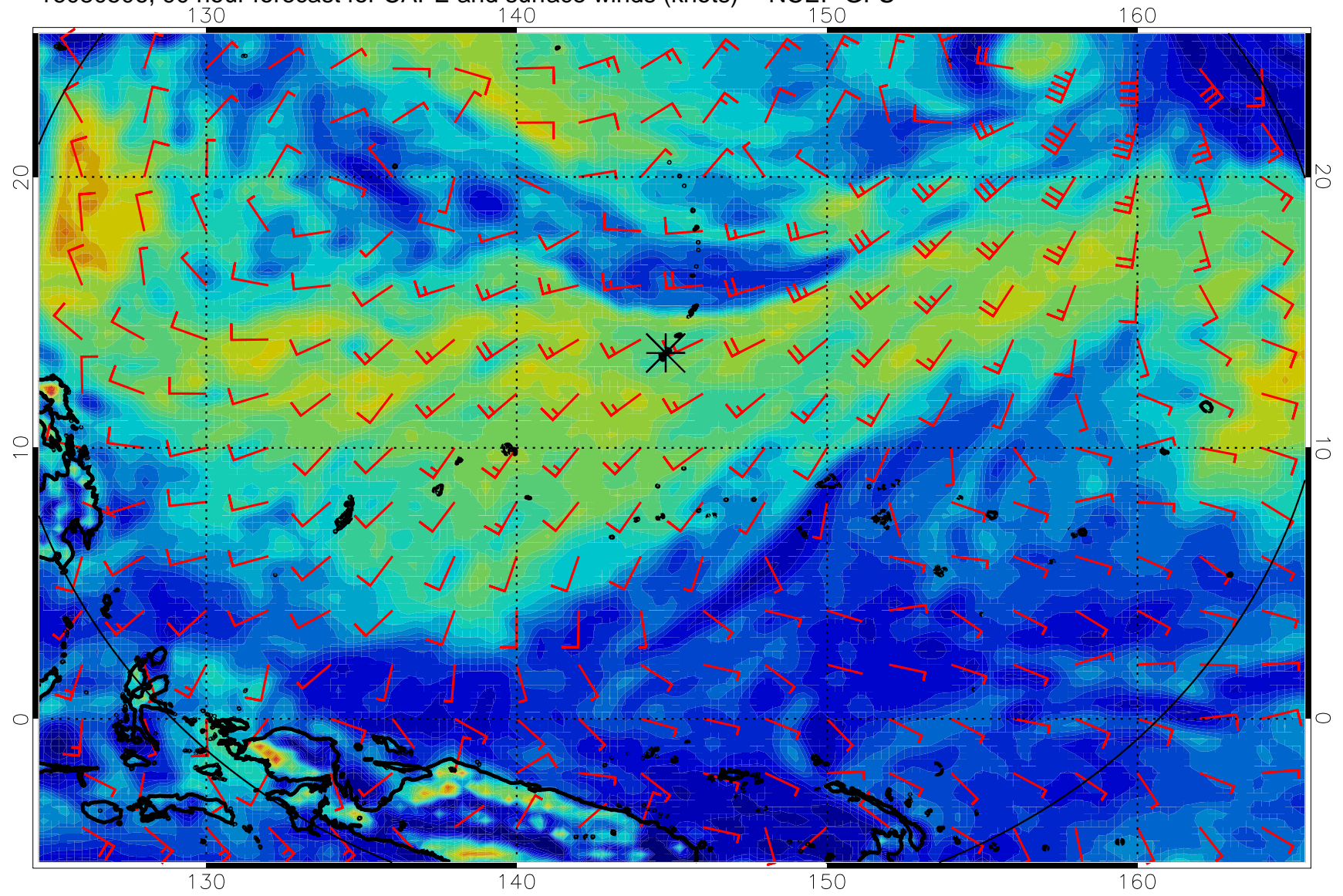
16080418, 78 hour forecast for CAPE and surface winds (knots) -- NCEP GFS



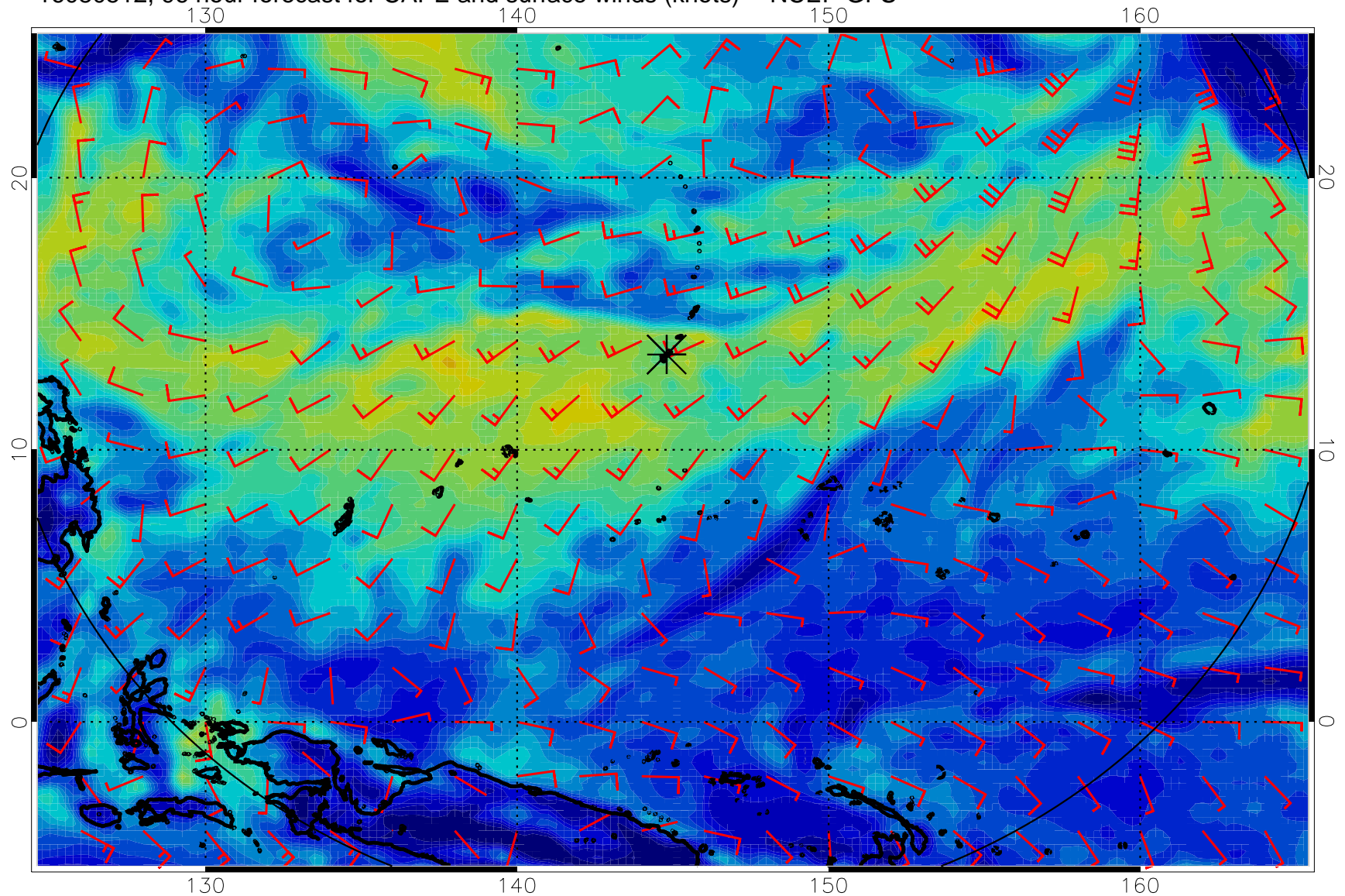
16080500, 84 hour forecast for CAPE and surface winds (knots) -- NCEP GFS



16080506, 90 hour forecast for CAPE and surface winds (knots) -- NCEP GFS

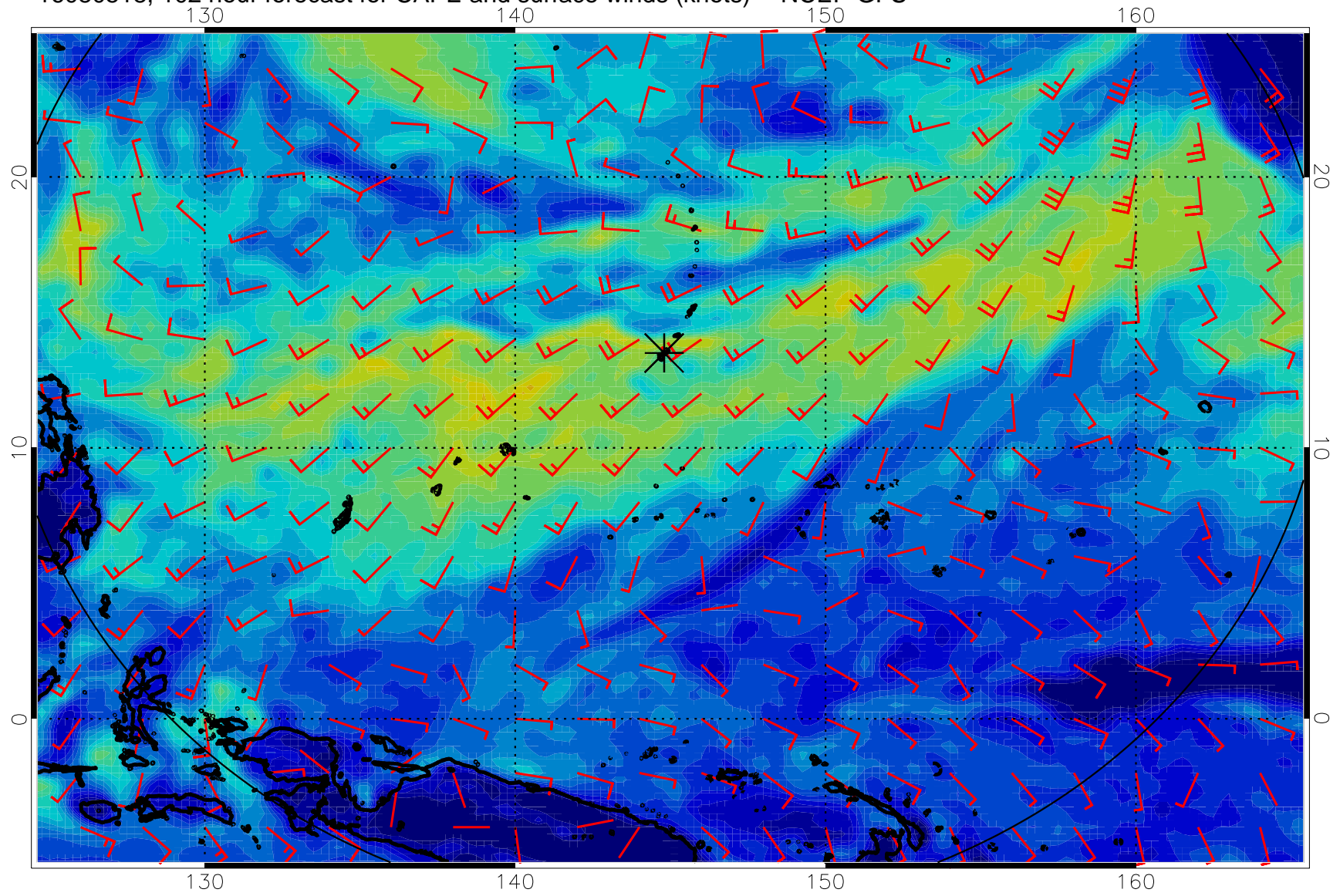


16080512, 96 hour forecast for CAPE and surface winds (knots) -- NCEP GFS

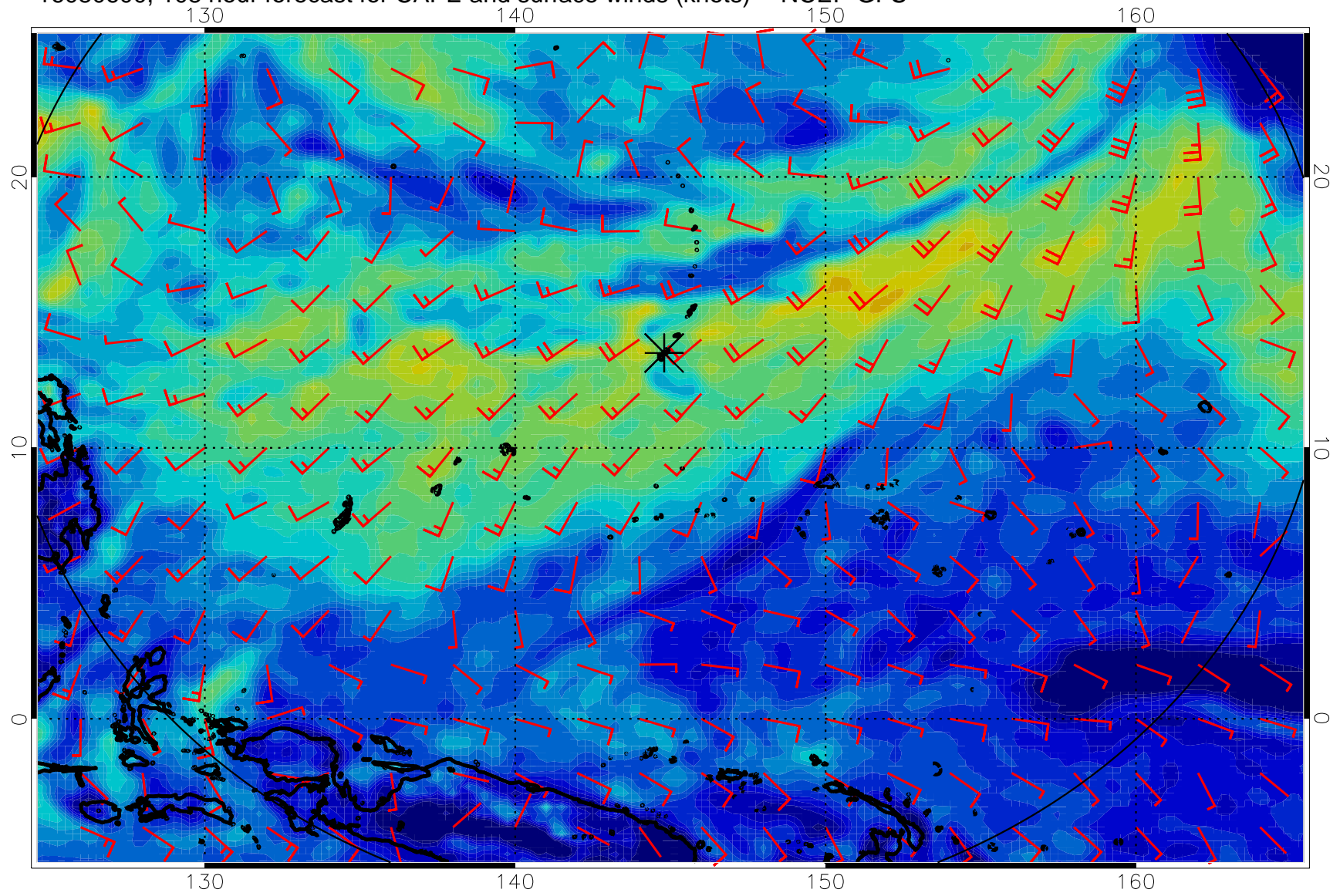




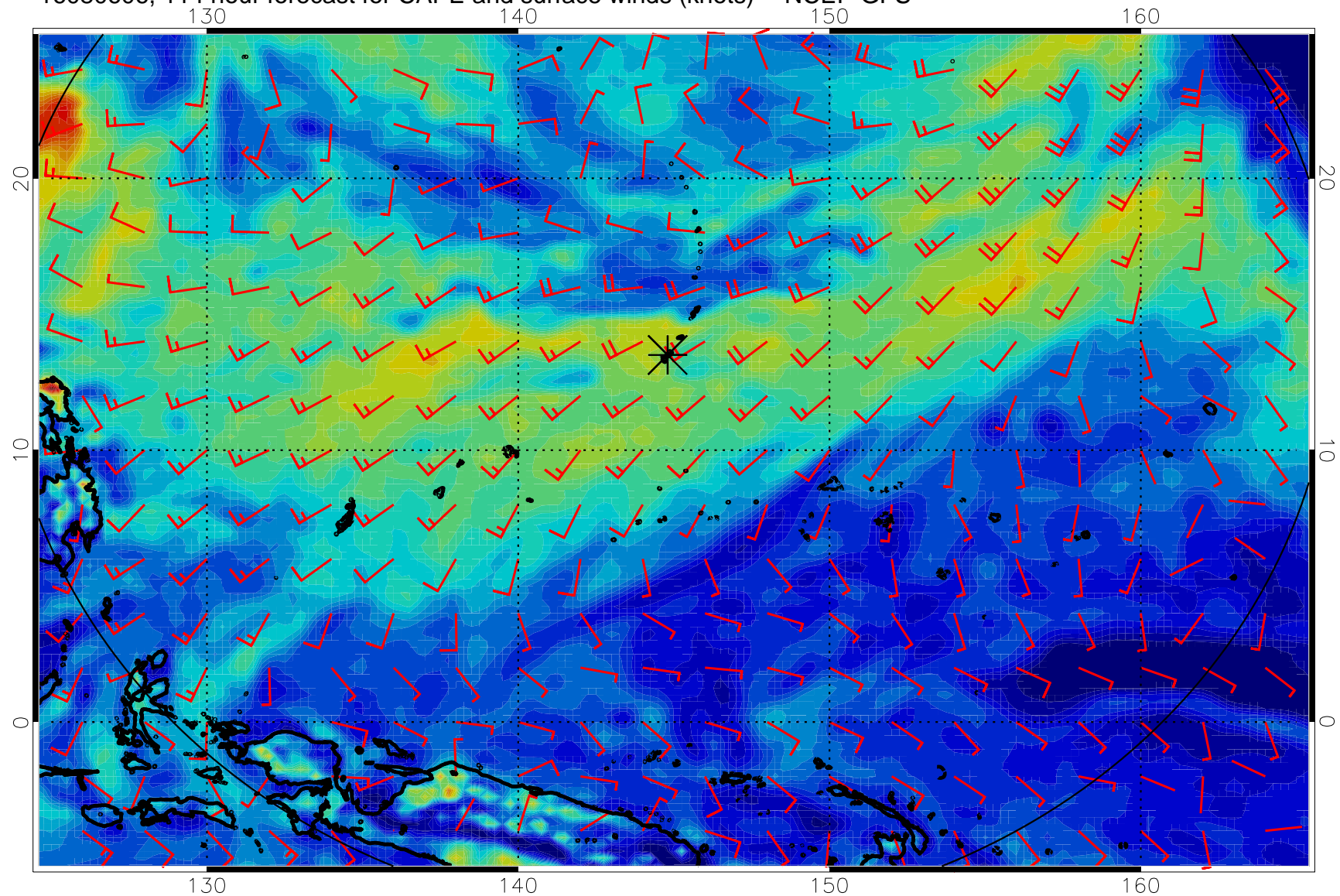
16080518, 102 hour forecast for CAPE and surface winds (knots) -- NCEP GFS



16080600, 108 hour forecast for CAPE and surface winds (knots) -- NCEP GFS



16080606, 114 hour forecast for CAPE and surface winds (knots) -- NCEP GFS



16080612, 120 hour forecast for CAPE and surface winds (knots) -- NCEP GFS

