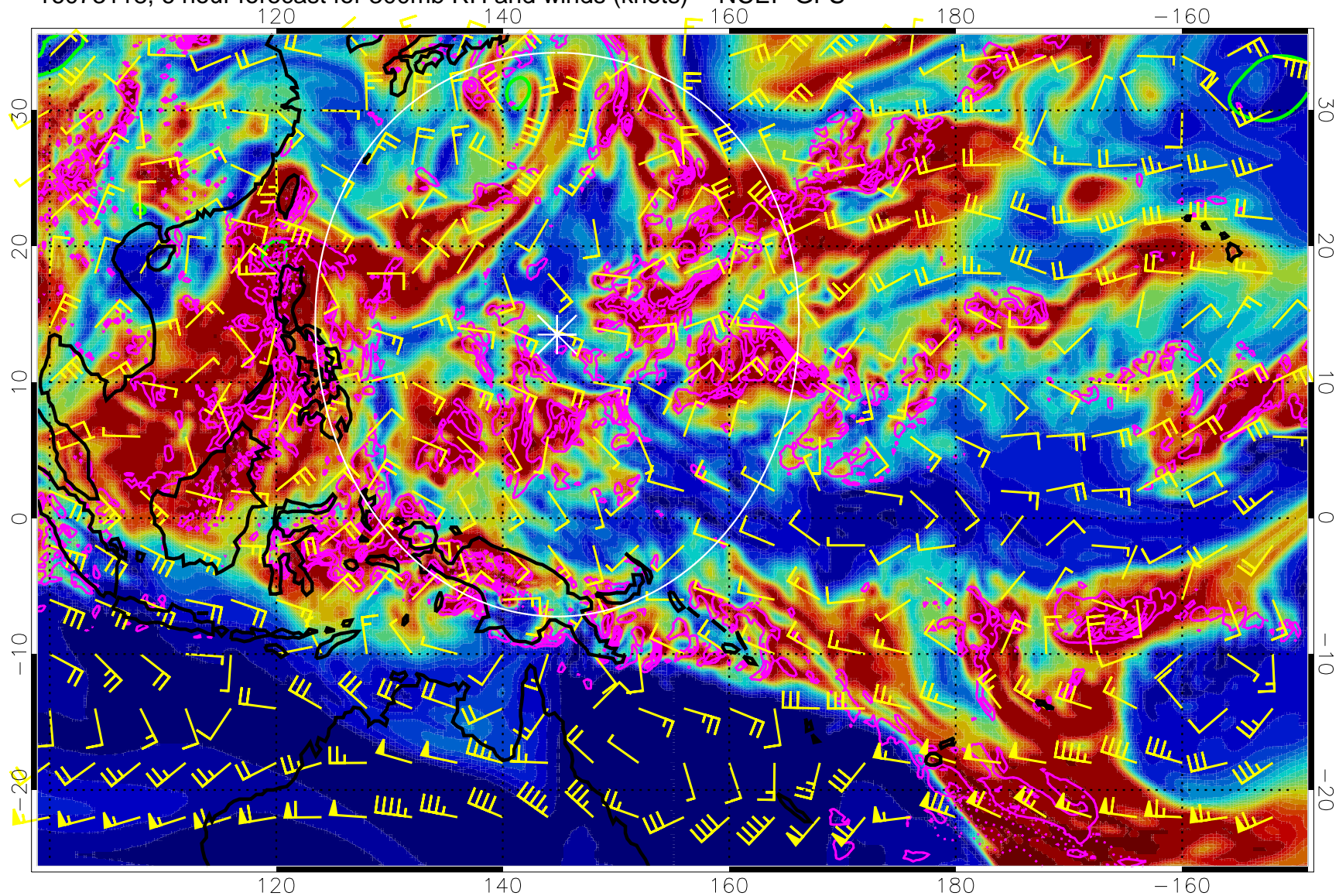


16073118, 6 hour forecast for 300mb RH and winds (knots) -- NCEP GFS

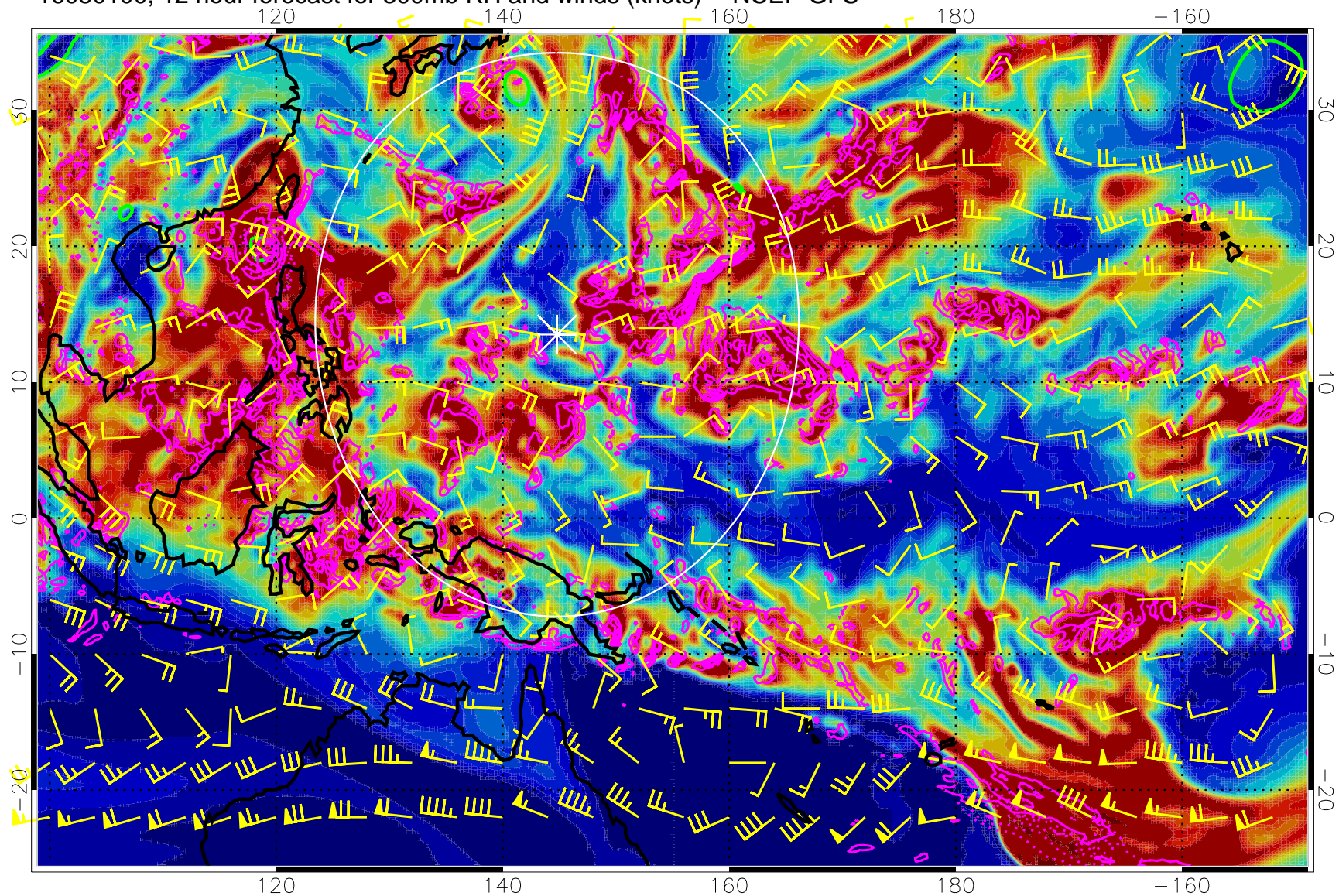


Precip (tot dot, conv sol) mm/day 40 mm/day contours, min 20

EPV Tropopause (2 PVU) Position

Range ring of 2304 km

16080100, 12 hour forecast for 300mb RH and winds (knots) -- NCEP GFS

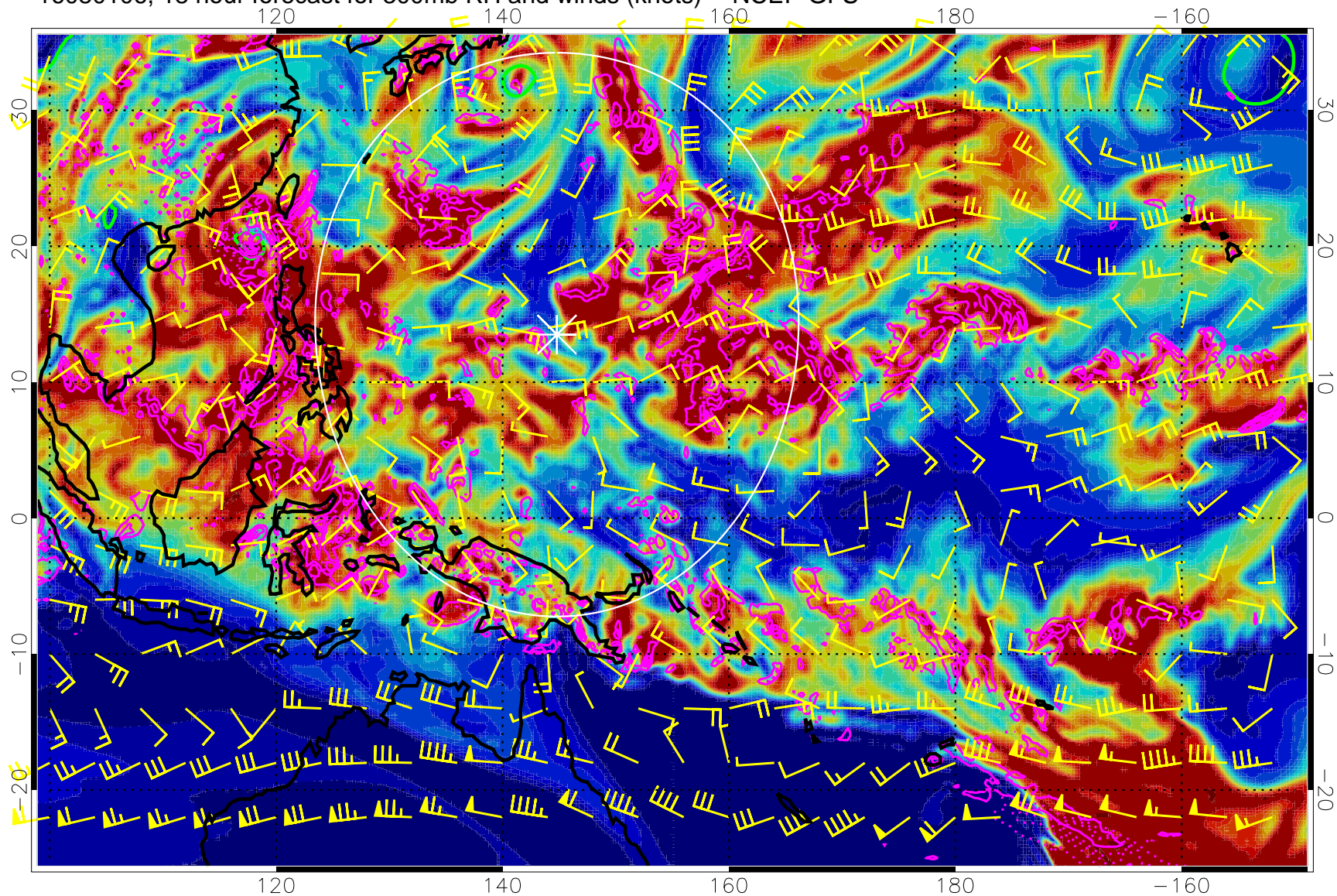


Precip (tot dot, conv sol) mm/day 40 mm/day contours, min 20

EPV Tropopause (2 PVU) Position

Range ring of 2304 km

16080106, 18 hour forecast for 300mb RH and winds (knots) -- NCEP GFS



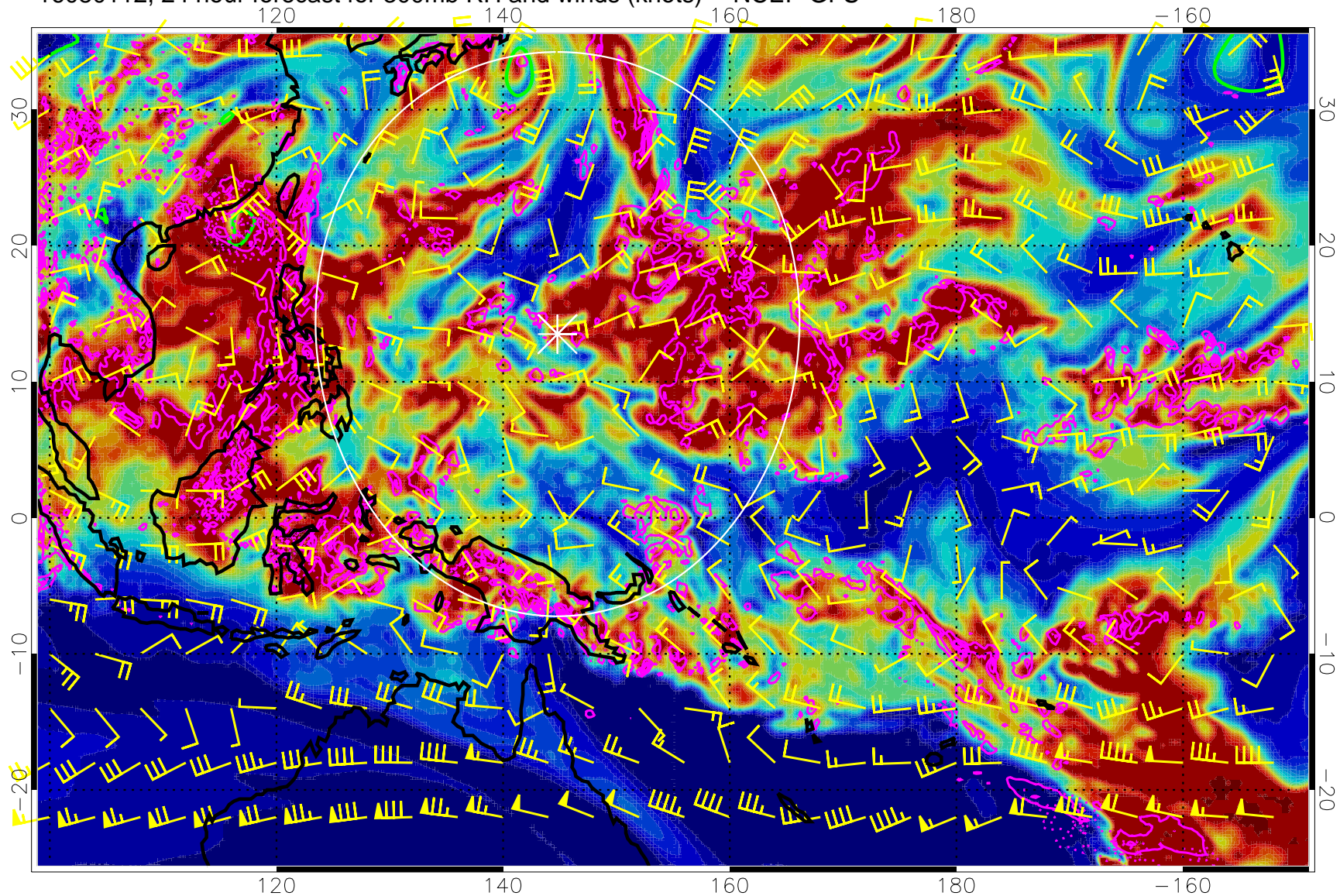
0 20 40 60 80 100  
RH, %

Precip (tot dot, conv sol) mm/day 40 mm/day contours, min 20

EPV Tropopause (2 PVU) Position

Range ring of 2304 km

16080112, 24 hour forecast for 300mb RH and winds (knots) -- NCEP GFS

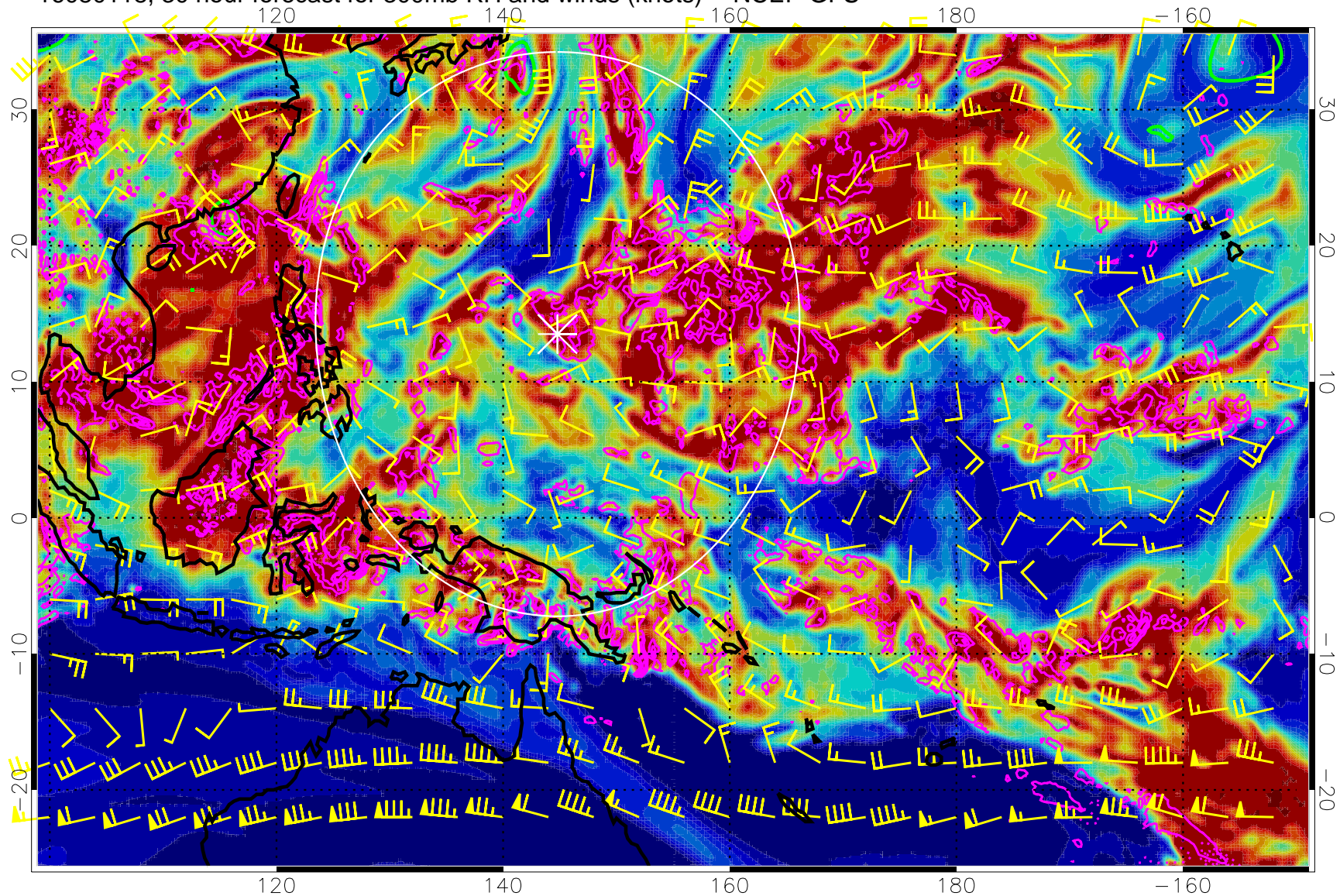


Precip (tot dot, conv sol) mm/day 40 mm/day contours, min 20

EPV Tropopause (2 PVU) Position

Range ring of 2304 km

16080118, 30 hour forecast for 300mb RH and winds (knots) -- NCEP GFS

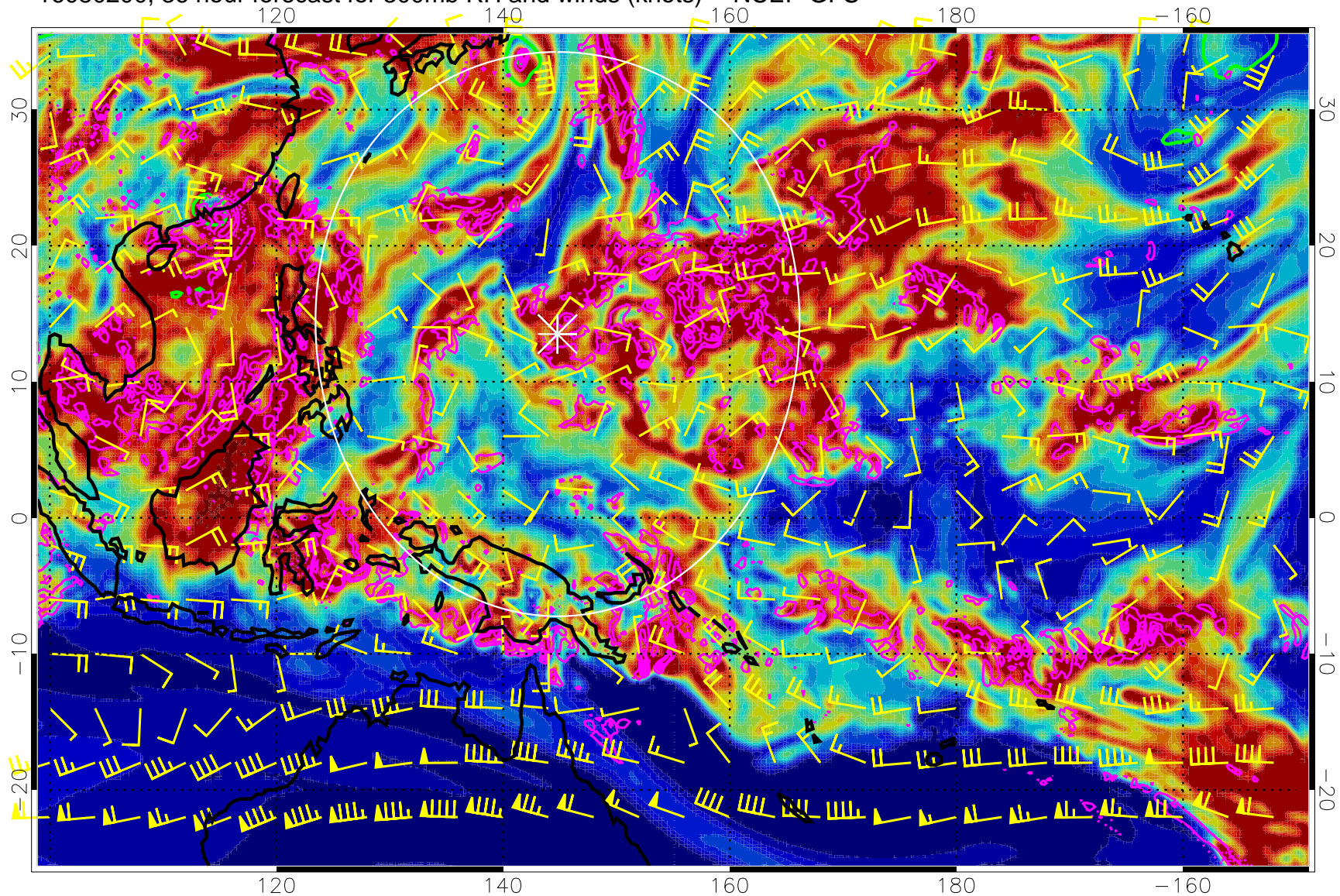


Precip (tot dot, conv sol) mm/day 40 mm/day contours, min 20

EPV Tropopause (2 PVU) Position

Range ring of 2304 km

16080200, 36 hour forecast for 300mb RH and winds (knots) -- NCEP GFS

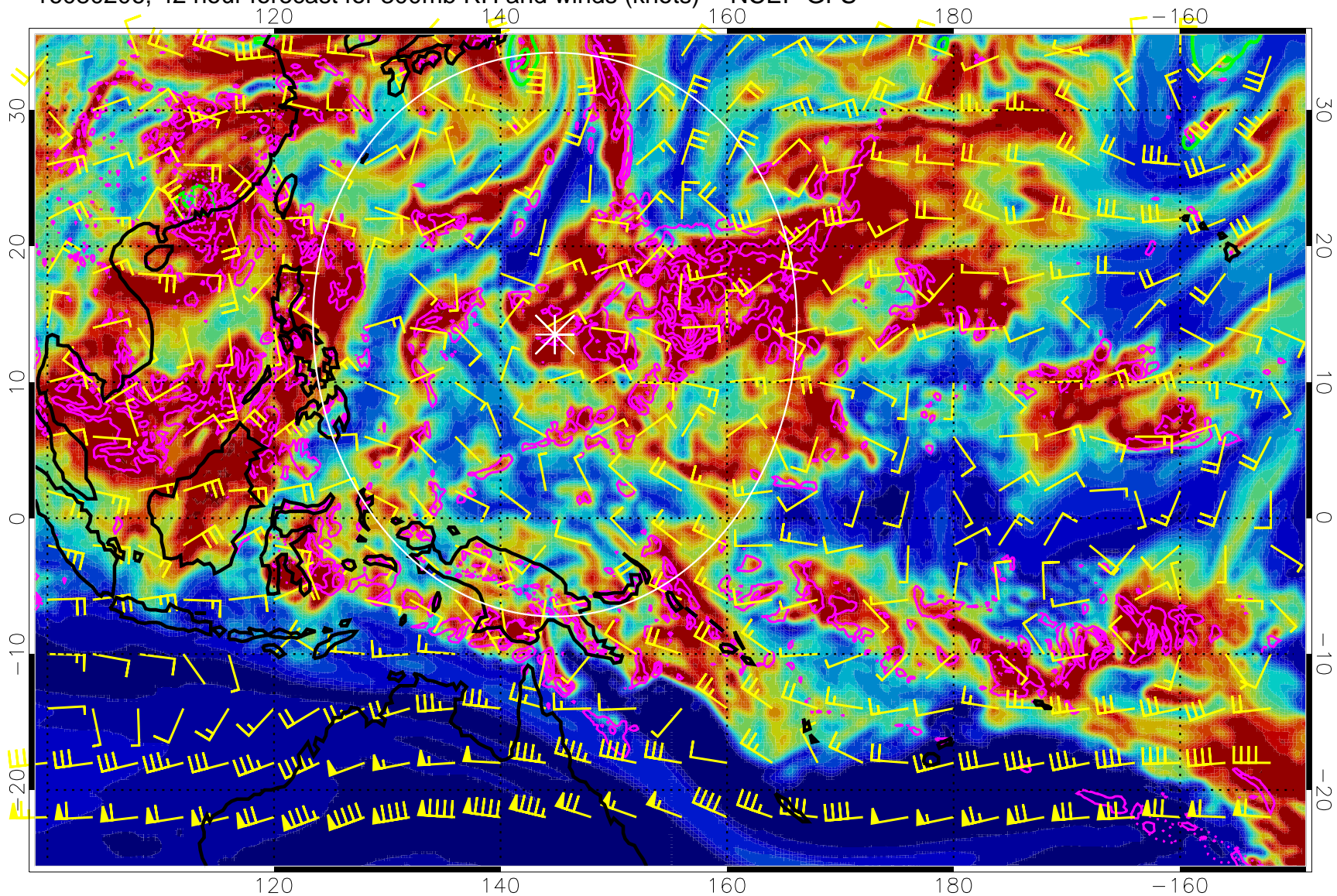


Precip (tot dot, conv sol) mm/day 40 mm/day contours, min 20

EPV Tropopause (2 PVU) Position

Range ring of 2304 km

16080206, 42 hour forecast for 300mb RH and winds (knots) -- NCEP GFS

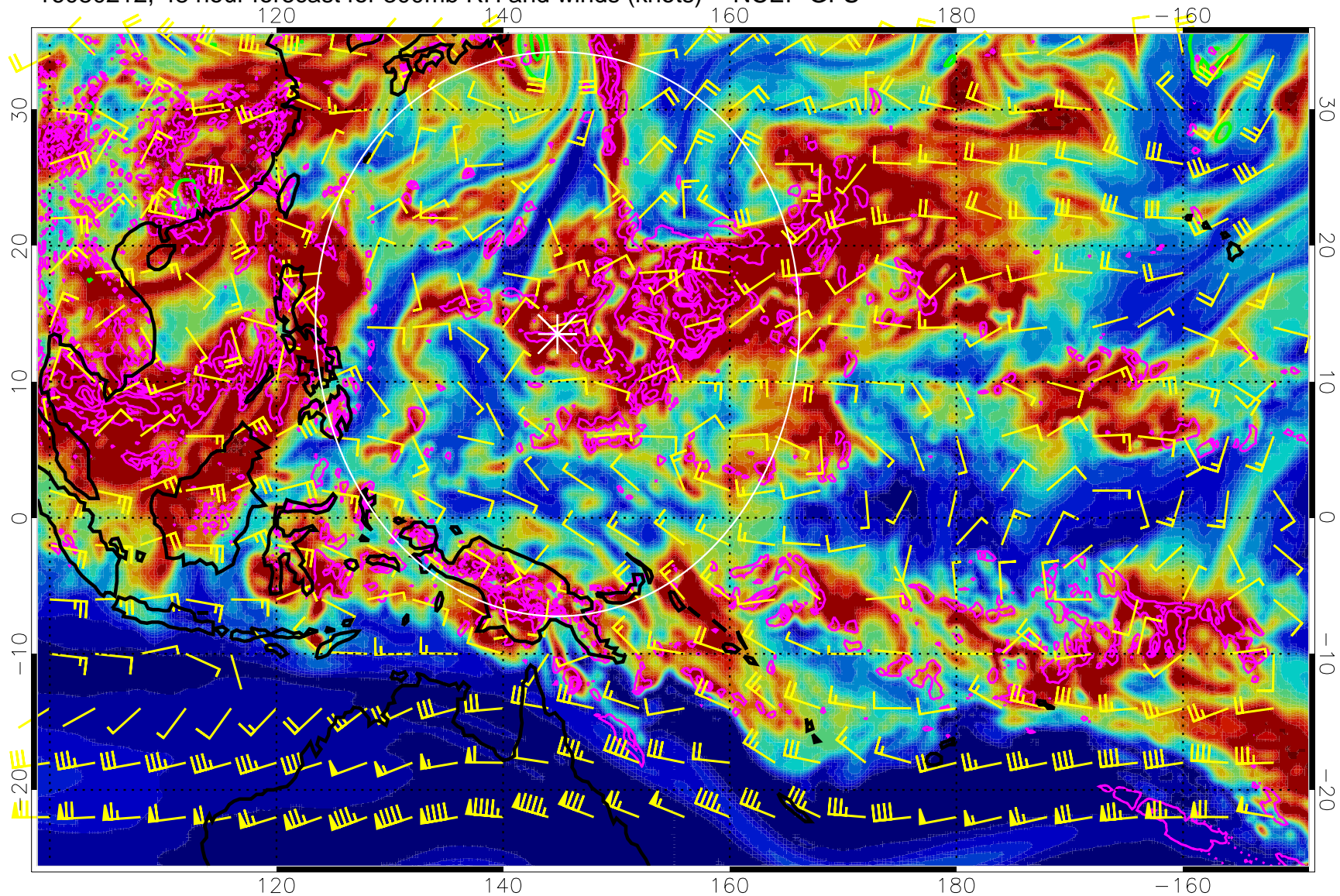


Precip (tot dot, conv sol) mm/day 40 mm/day contours, min 20

EPV Tropopause (2 PVU) Position

Range ring of 2304 km

16080212, 48 hour forecast for 300mb RH and winds (knots) -- NCEP GFS



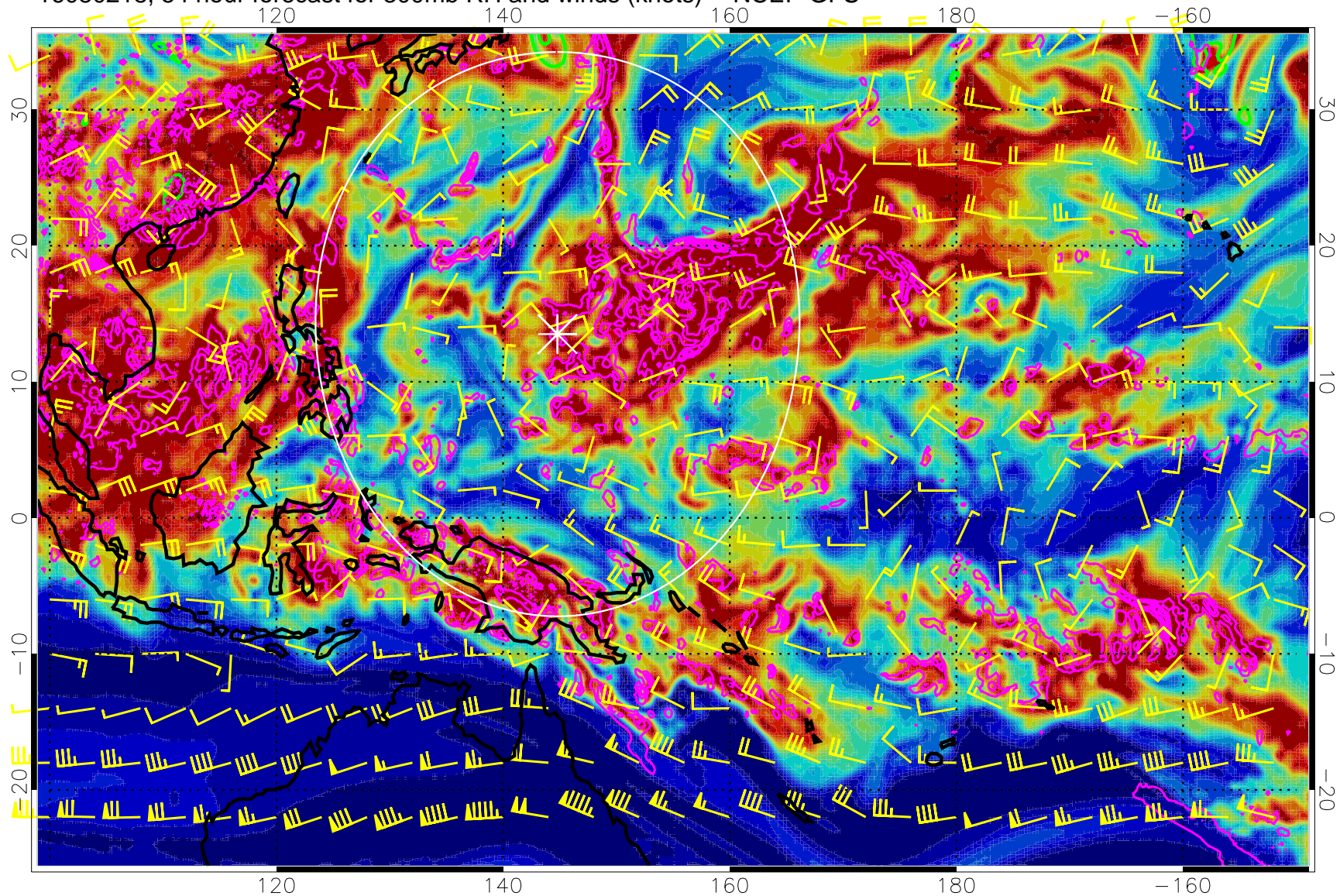
Precip (tot dot, conv sol) mm/day 40 mm/day contours, min 20

EPV Tropopause (2 PVU) Position

Range ring of 2304 km



16080218, 54 hour forecast for 300mb RH and winds (knots) -- NCEP GFS

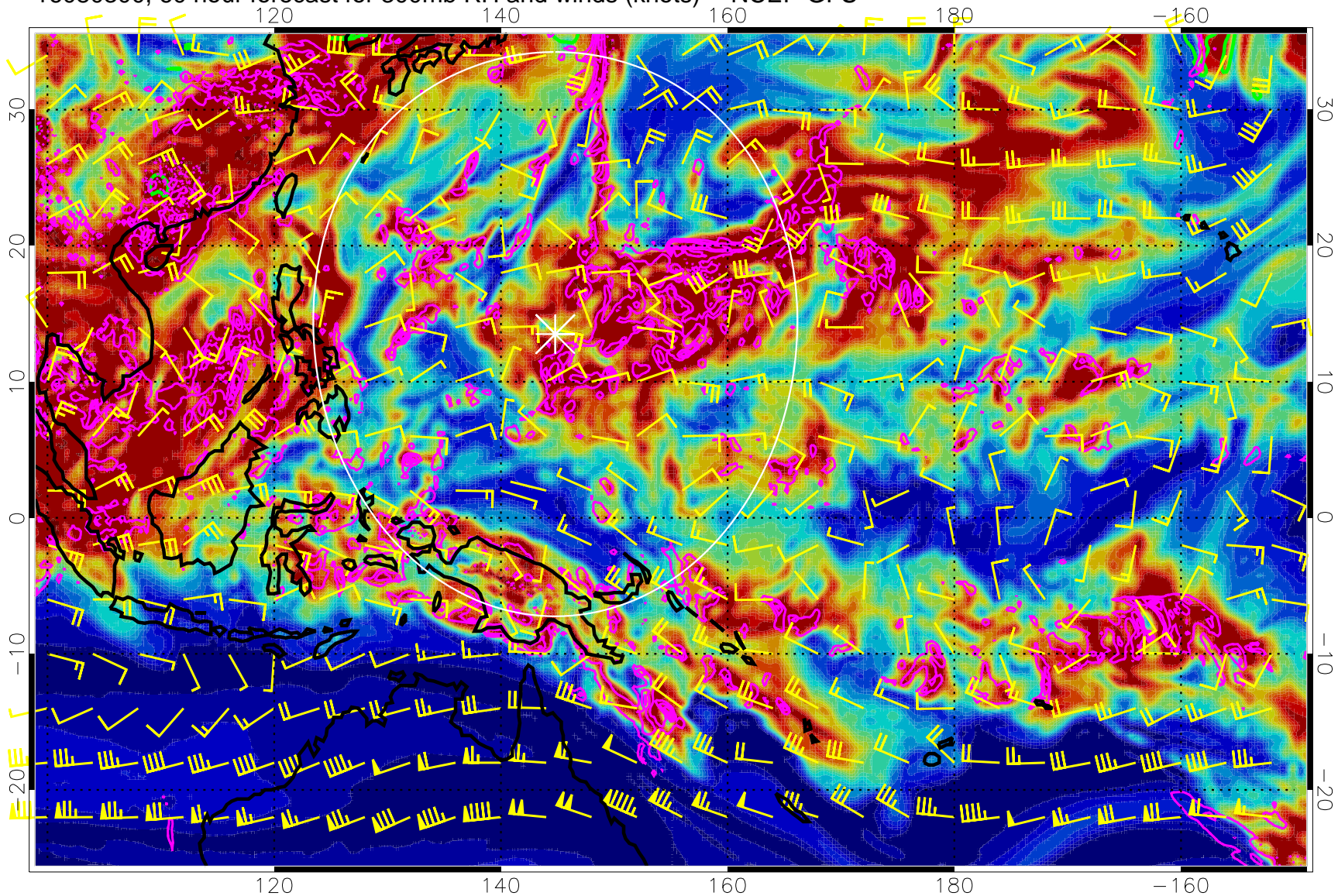


Precip (tot dot, conv sol) mm/day 40 mm/day contours, min 20

EPV Tropopause (2 PVU) Position

Range ring of 2304 km

16080300, 60 hour forecast for 300mb RH and winds (knots) -- NCEP GFS

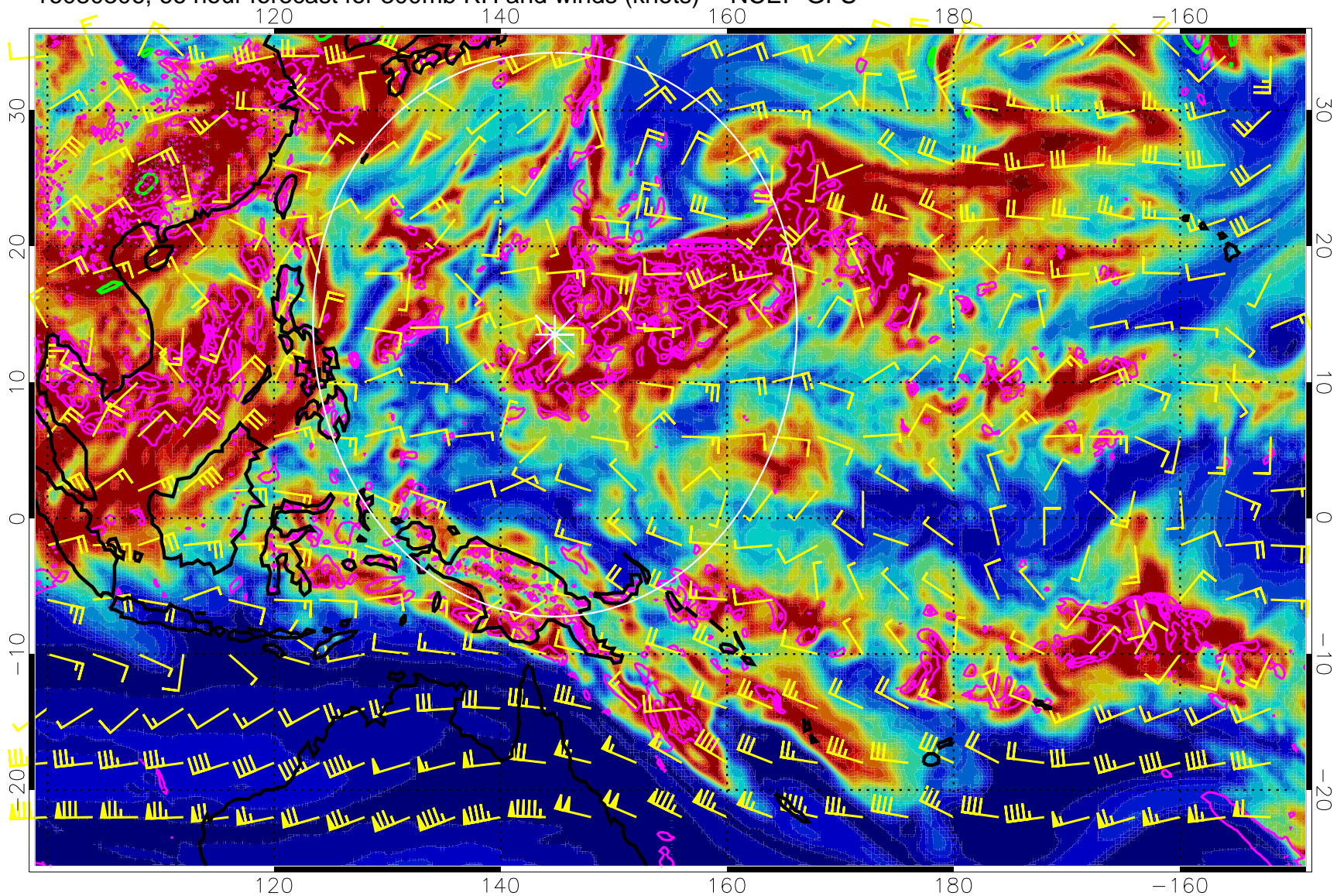


Precip (tot dot, conv sol) mm/day 40 mm/day contours, min 20

EPV Tropopause (2 PVU) Position

Range ring of 2304 km

16080306, 66 hour forecast for 300mb RH and winds (knots) -- NCEP GFS

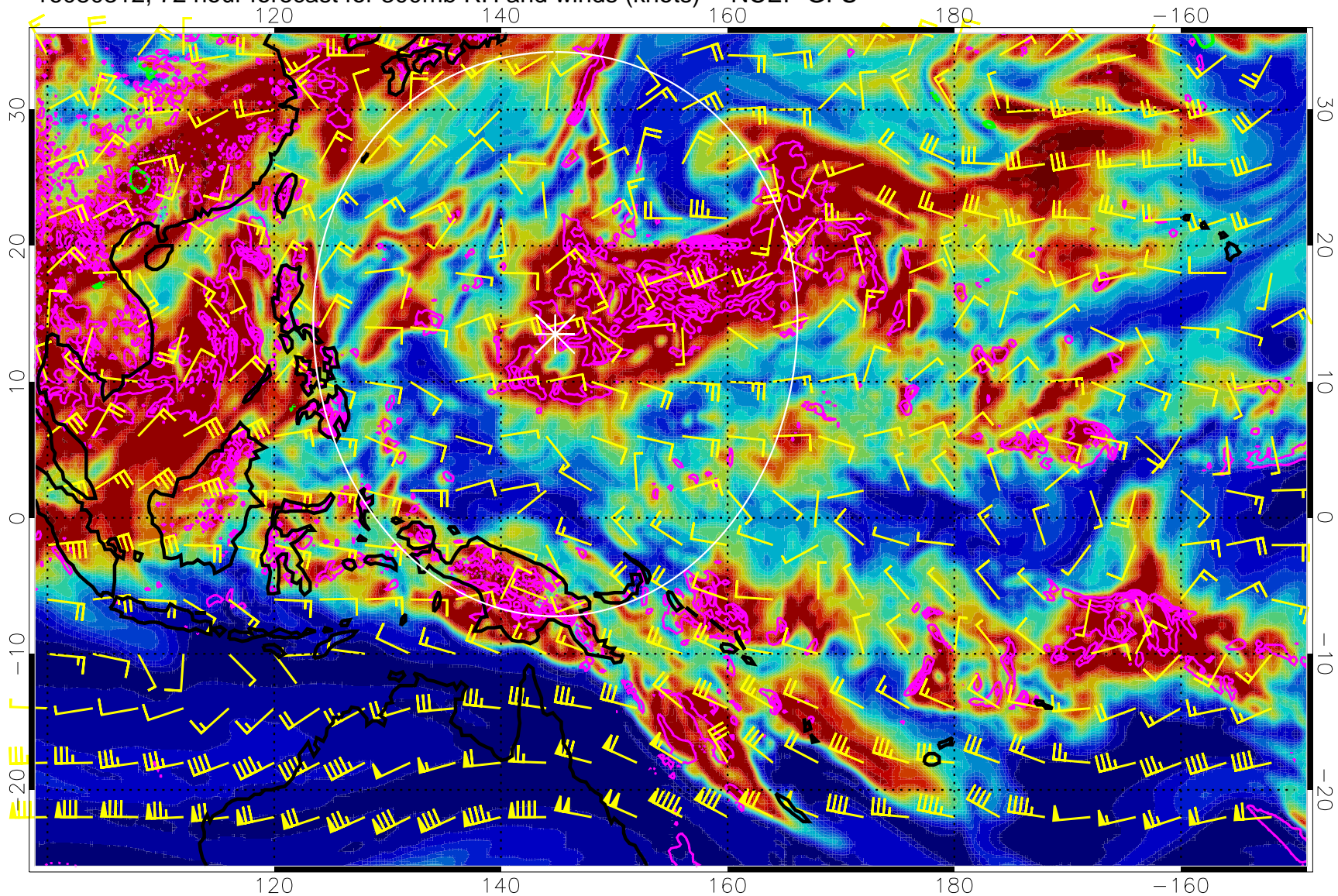


Precip (tot dot, conv sol) mm/day 40 mm/day contours, min 20

EPV Tropopause (2 PVU) Position

Range ring of 2304 km

16080312, 72 hour forecast for 300mb RH and winds (knots) -- NCEP GFS

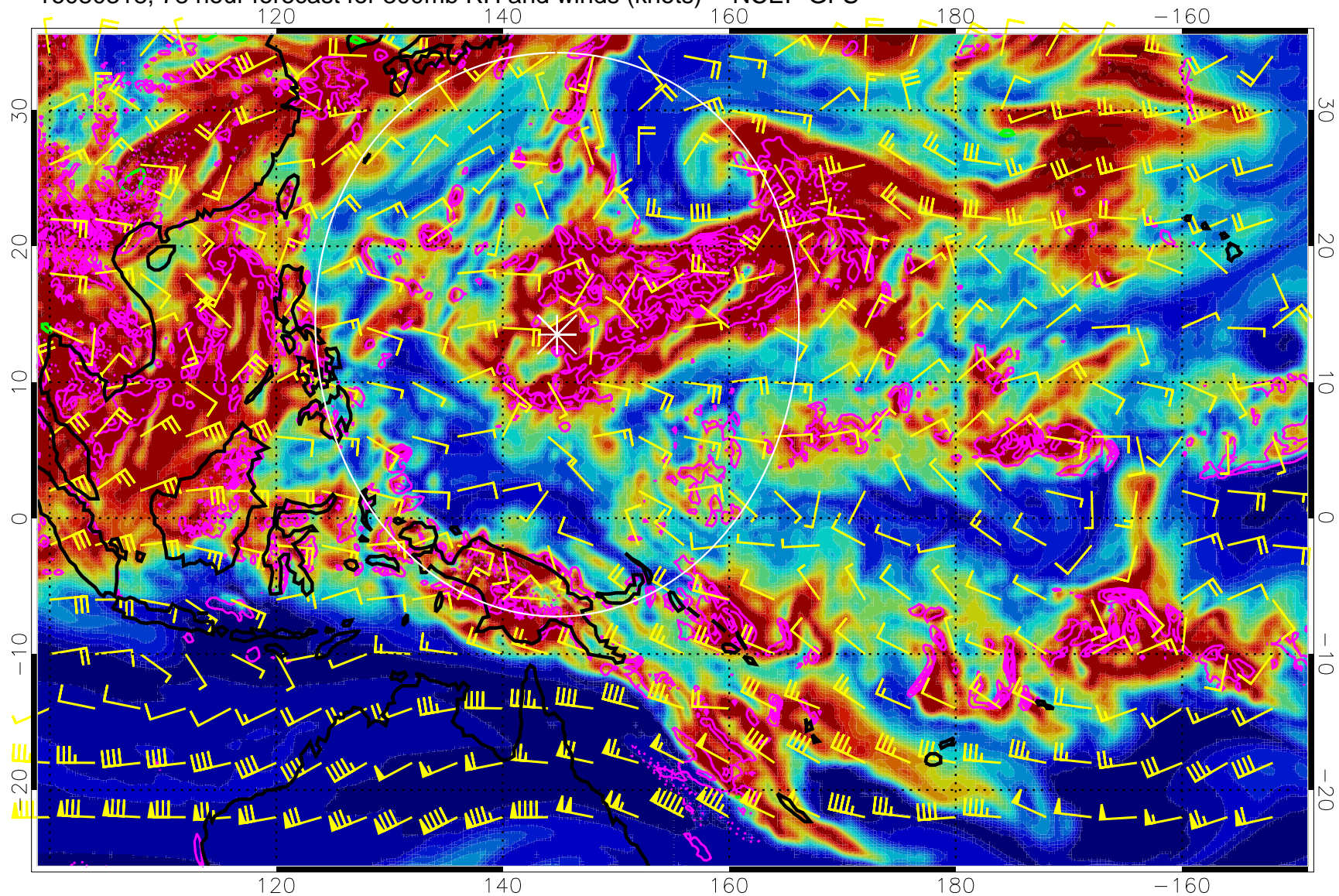


Precip (tot dot, conv sol) mm/day 40 mm/day contours, min 20

EPV Tropopause (2 PVU) Position

Range ring of 2304 km

16080318, 78 hour forecast for 300mb RH and winds (knots) -- NCEP GFS



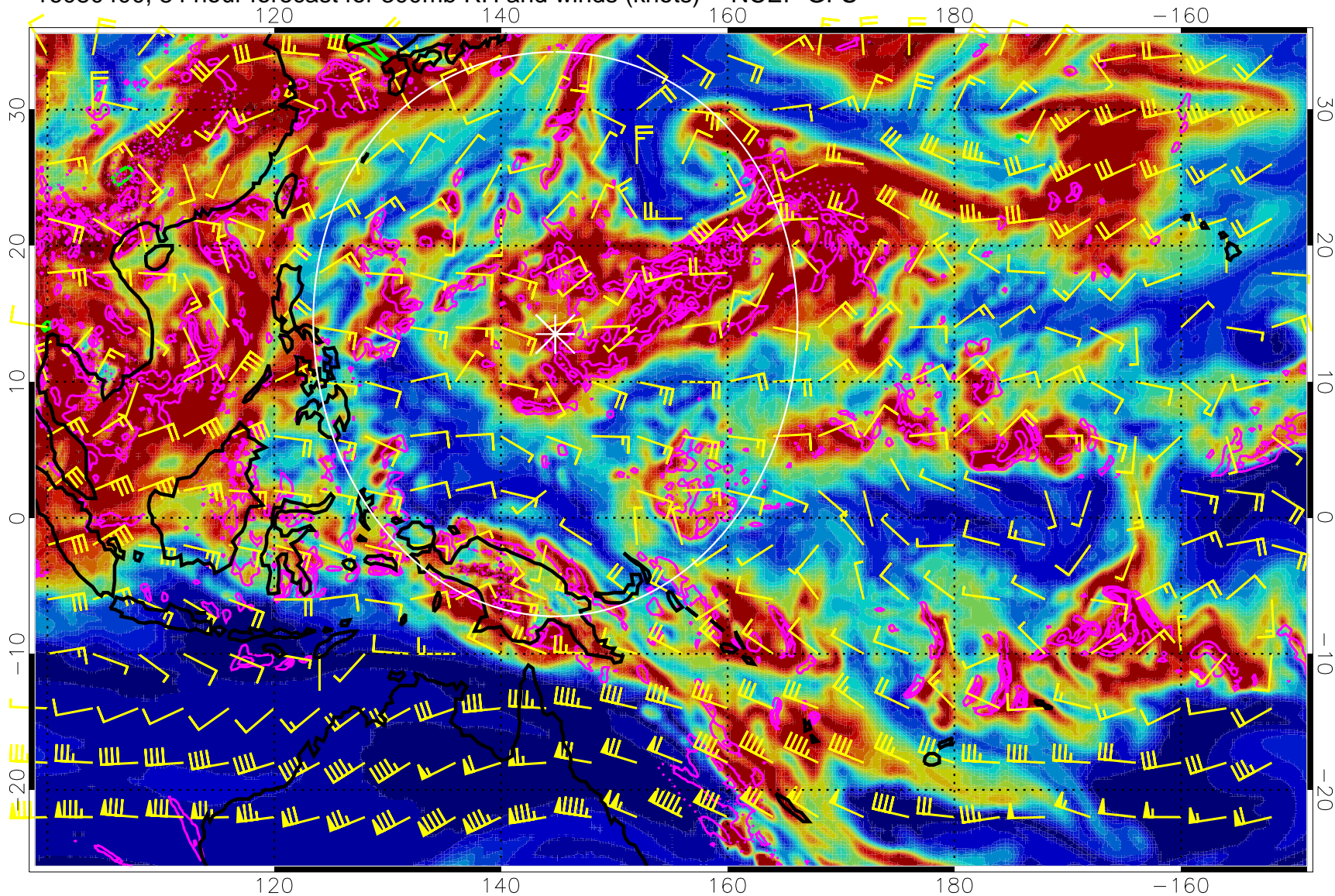
0 20 40 60 80 100  
RH, %

Precip (tot dot, conv sol) mm/day 40 mm/day contours, min 20

EPV Tropopause (2 PVU) Position

Range ring of 2304 km

16080400, 84 hour forecast for 300mb RH and winds (knots) -- NCEP GFS



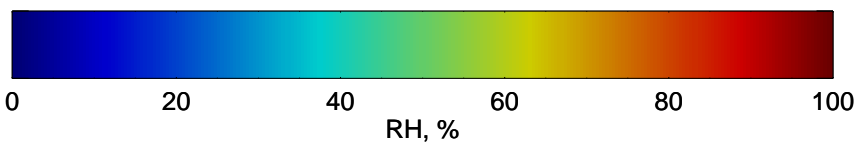
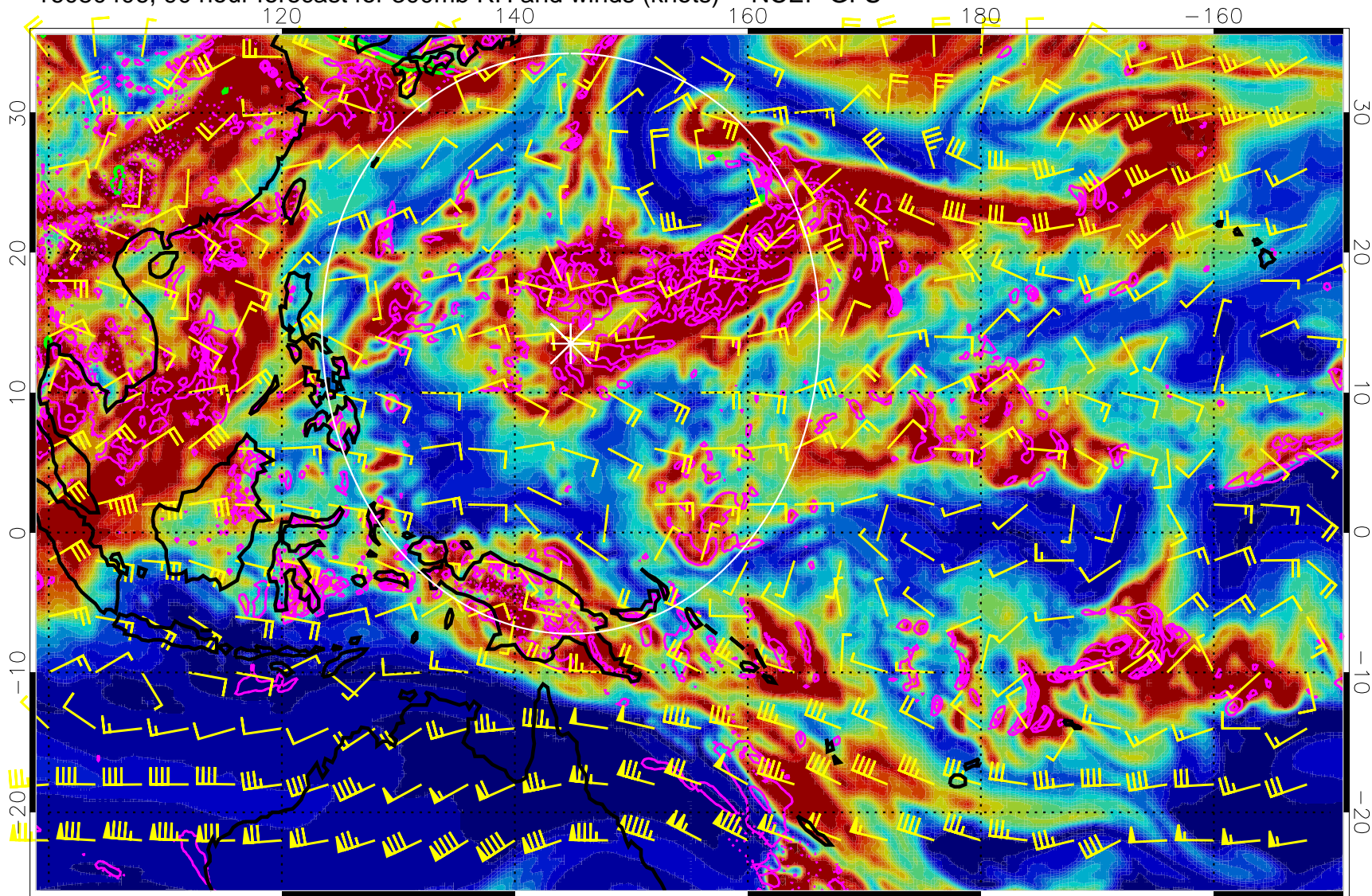
0 20 40 60 80 100  
RH, %

Precip (tot dot, conv sol) mm/day 40 mm/day contours, min 20

EPV Tropopause (2 PVU) Position

Range ring of 2304 km

16080406, 90 hour forecast for 300mb RH and winds (knots) -- NCEP GFS

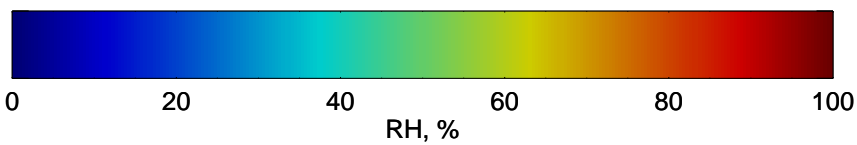
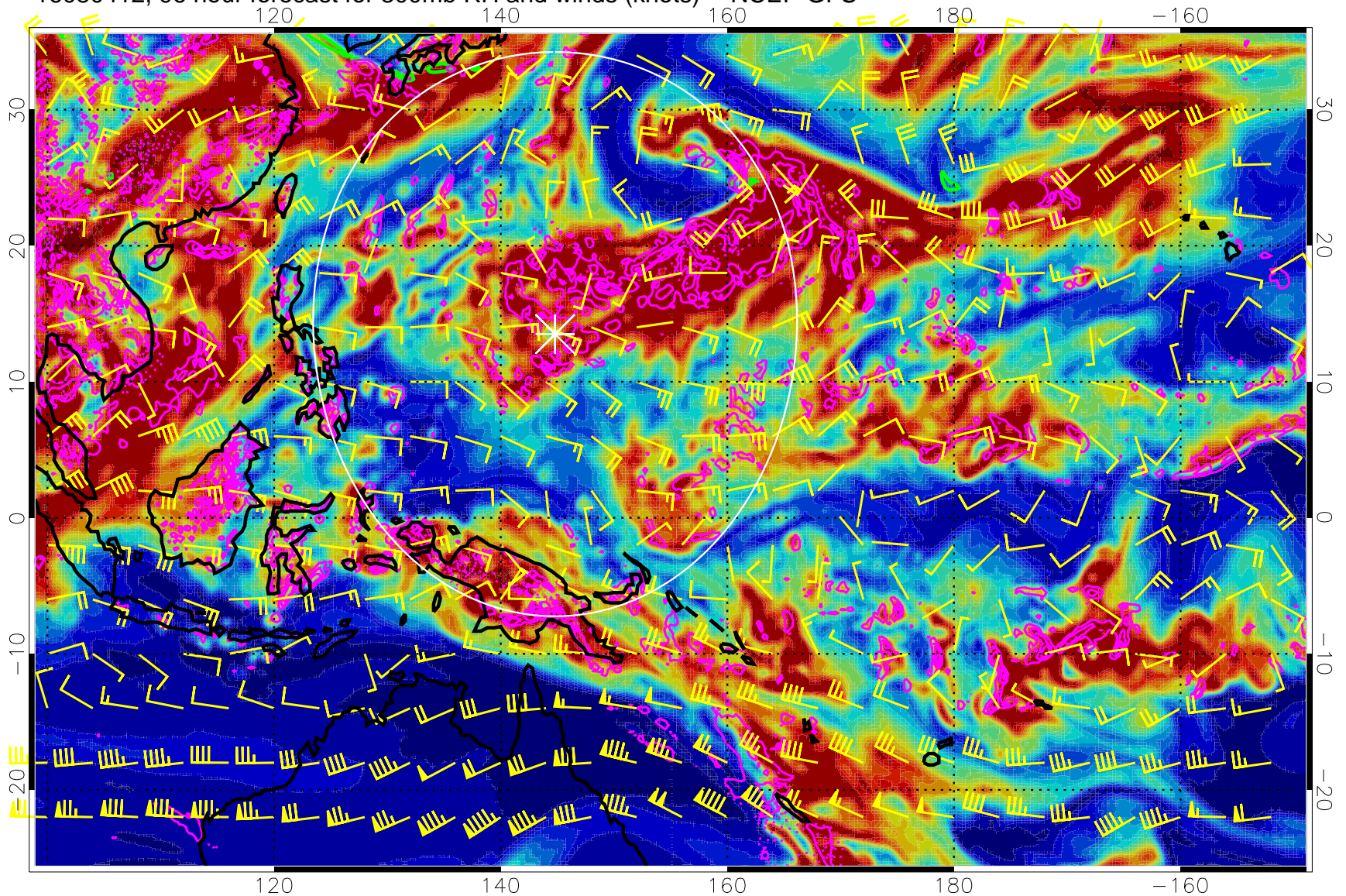


Precip (tot dot, conv sol) mm/day 40 mm/day contours, min 20

EPV Tropopause (2 PVU) Position

Range ring of 2304 km

16080412, 96 hour forecast for 300mb RH and winds (knots) -- NCEP GFS



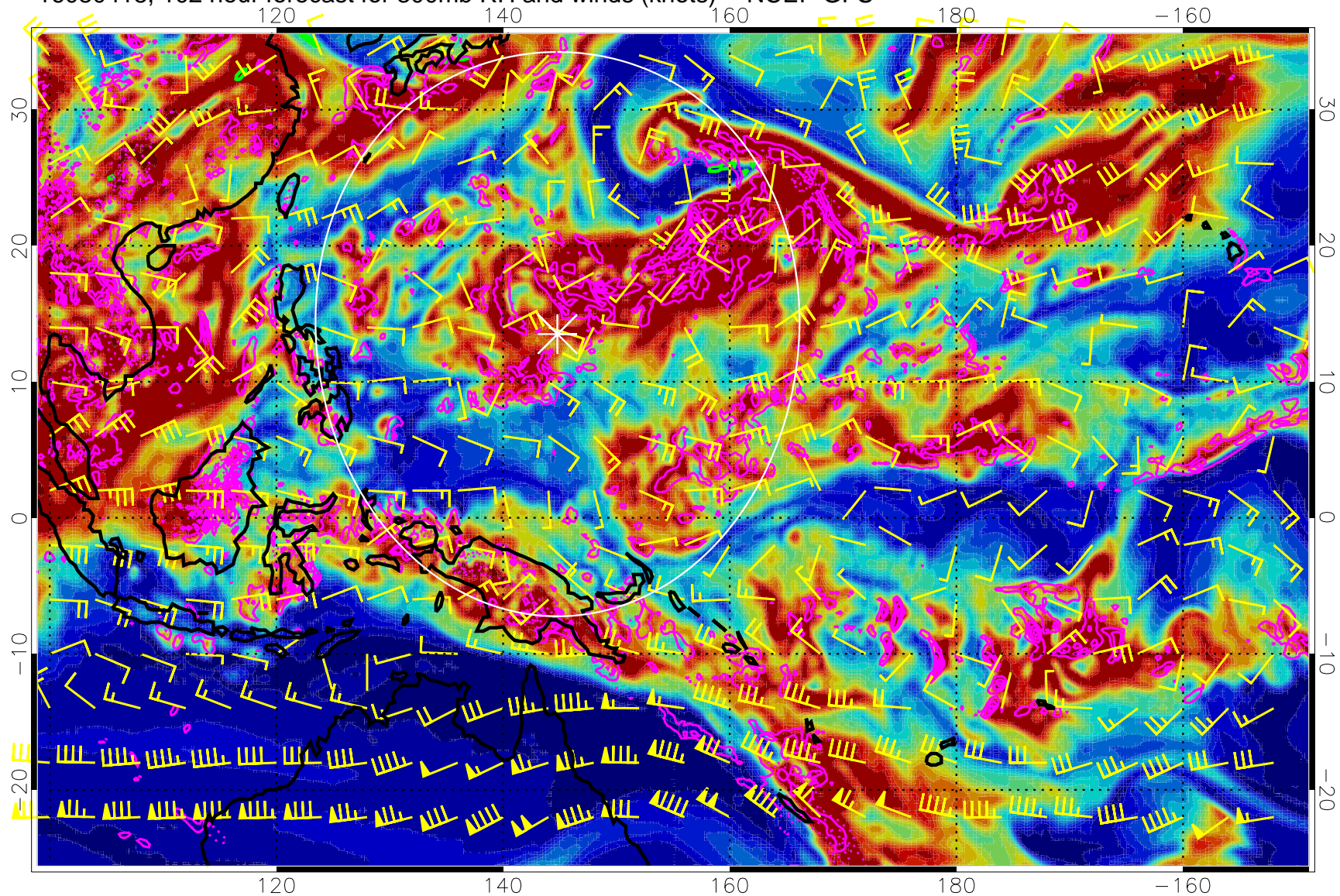
Precip (tot dot, conv sol) mm/day 40 mm/day contours, min 20

EPV Tropopause (2 PVU) Position

Range ring of 2304 km



16080418, 102 hour forecast for 300mb RH and winds (knots) -- NCEP GFS



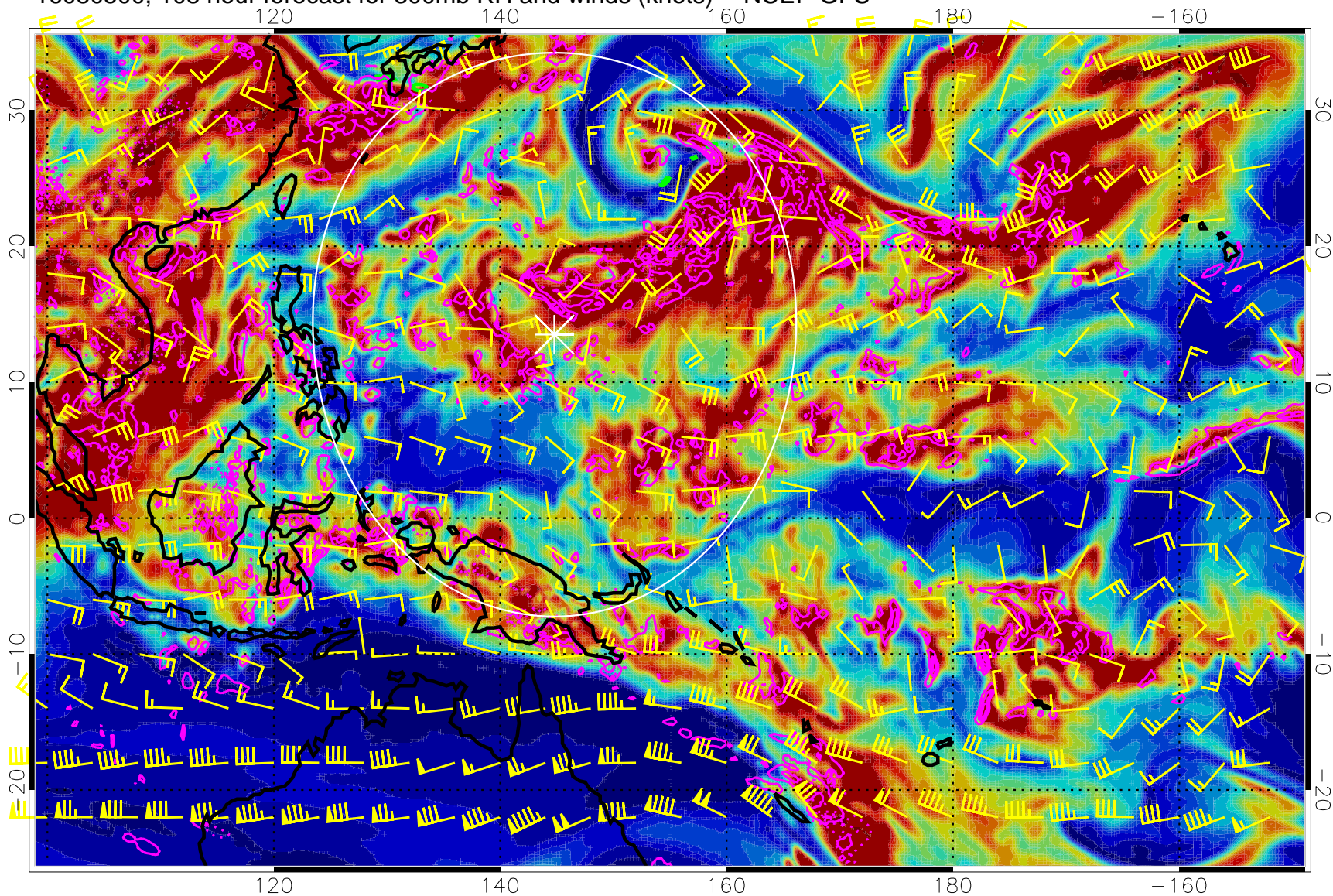
0 20 40 60 80 100  
RH, %

Precip (tot dot, conv sol) mm/day 40 mm/day contours, min 20

EPV Tropopause (2 PVU) Position

Range ring of 2304 km

16080500, 108 hour forecast for 300mb RH and winds (knots) -- NCEP GFS

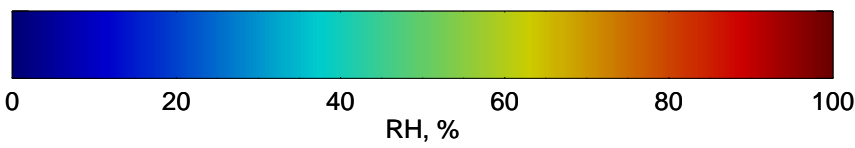
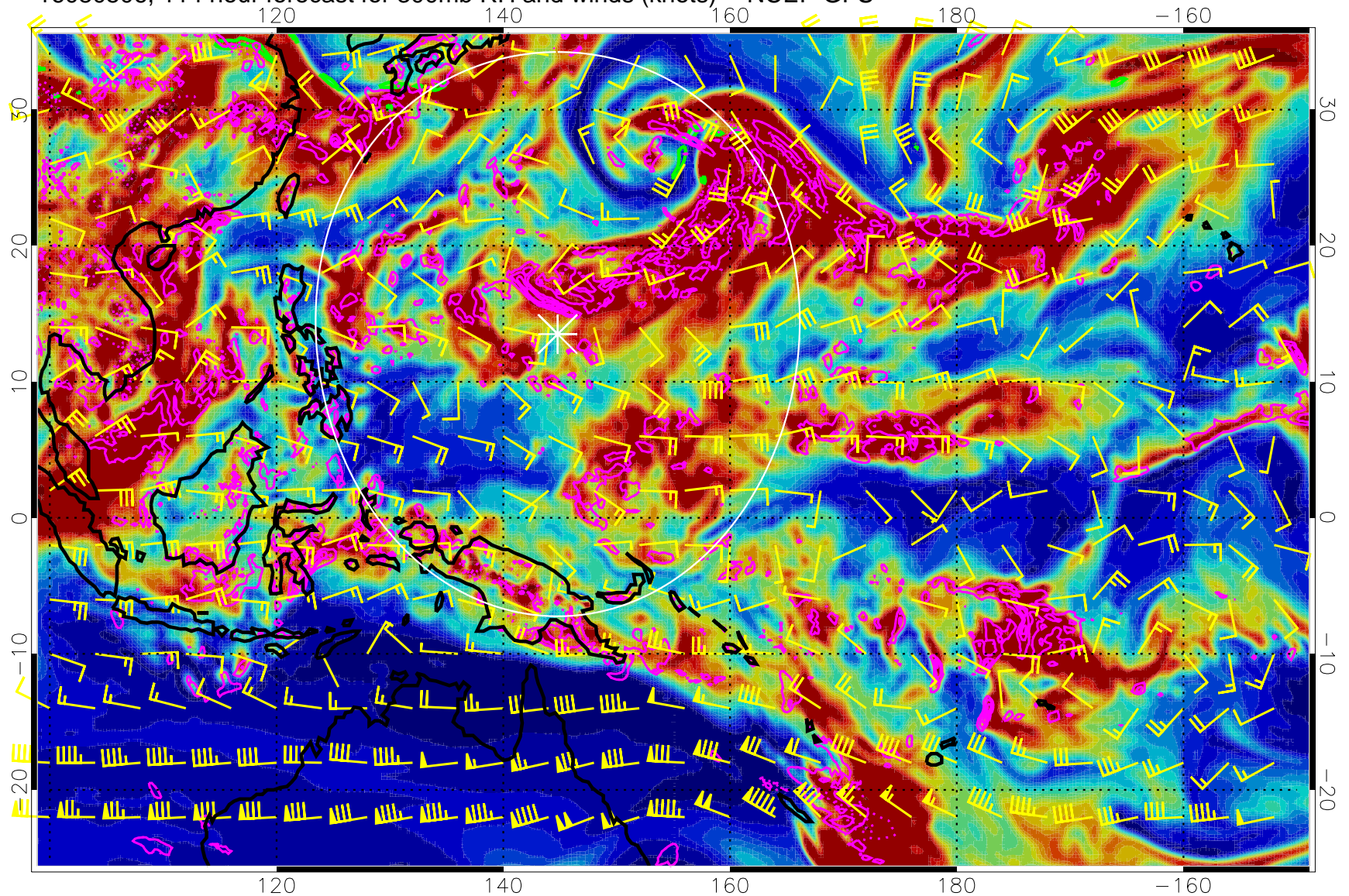


Precip (tot dot, conv sol) mm/day 40 mm/day contours, min 20

EPV Tropopause (2 PVU) Position

Range ring of 2304 km

16080506, 114 hour forecast for 300mb RH and winds (knots) -- NCEP GFS

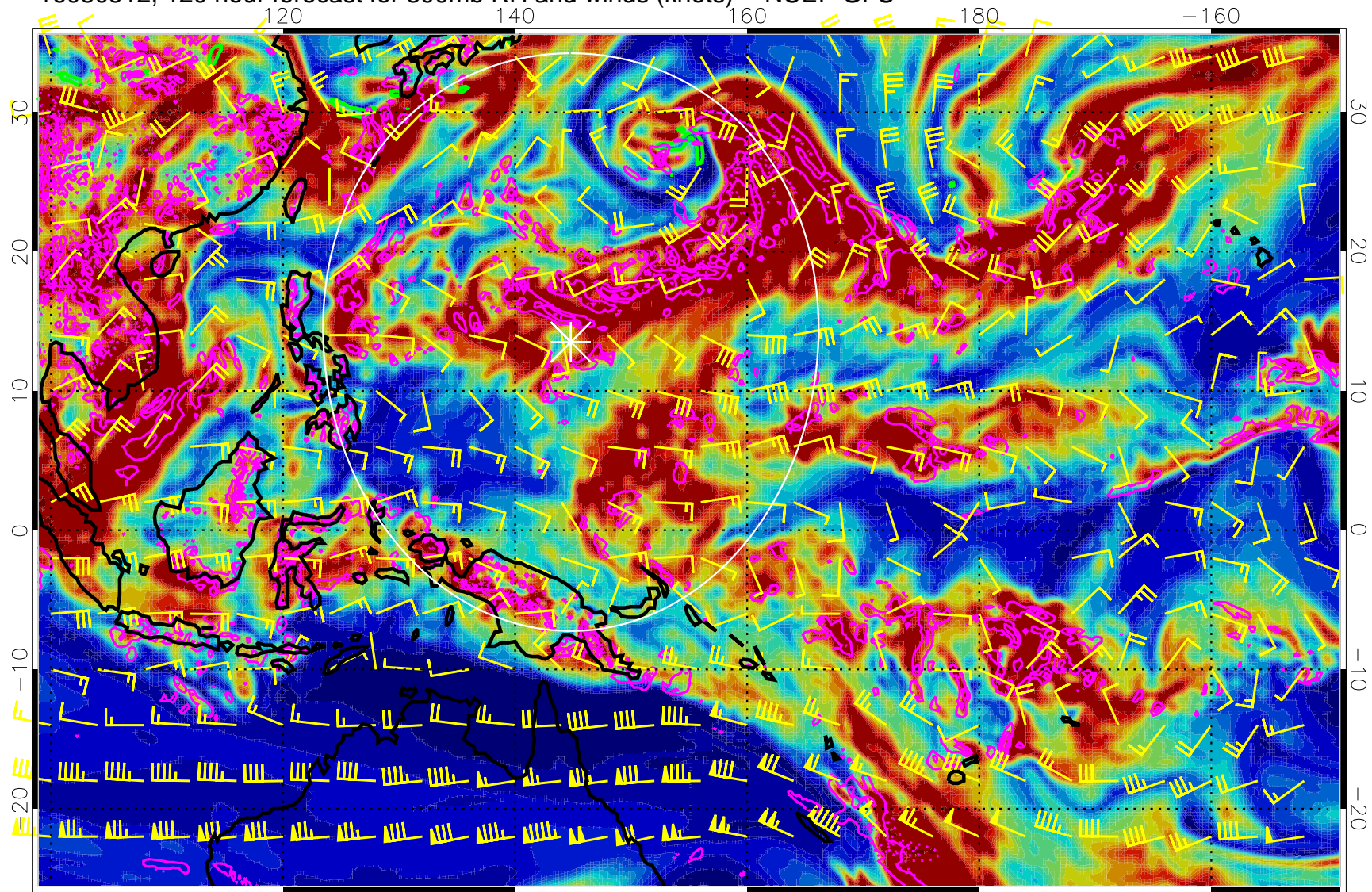


Precip (tot dot, conv sol) mm/day 40 mm/day contours, min 20

EPV Tropopause (2 PVU) Position

Range ring of 2304 km

16080512, 120 hour forecast for 300mb RH and winds (knots) -- NCEP GFS



0 20 40 60 80 100  
RH, %

Precip (tot dot, conv sol) mm/day 40 mm/day contours, min 20

EPV Tropopause (2 PVU) Position

Range ring of 2304 km