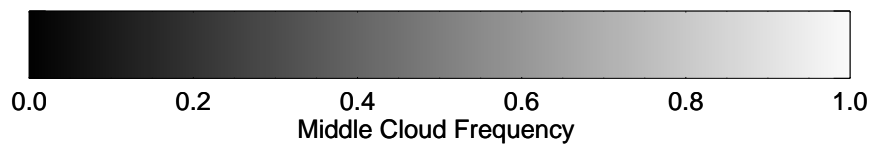
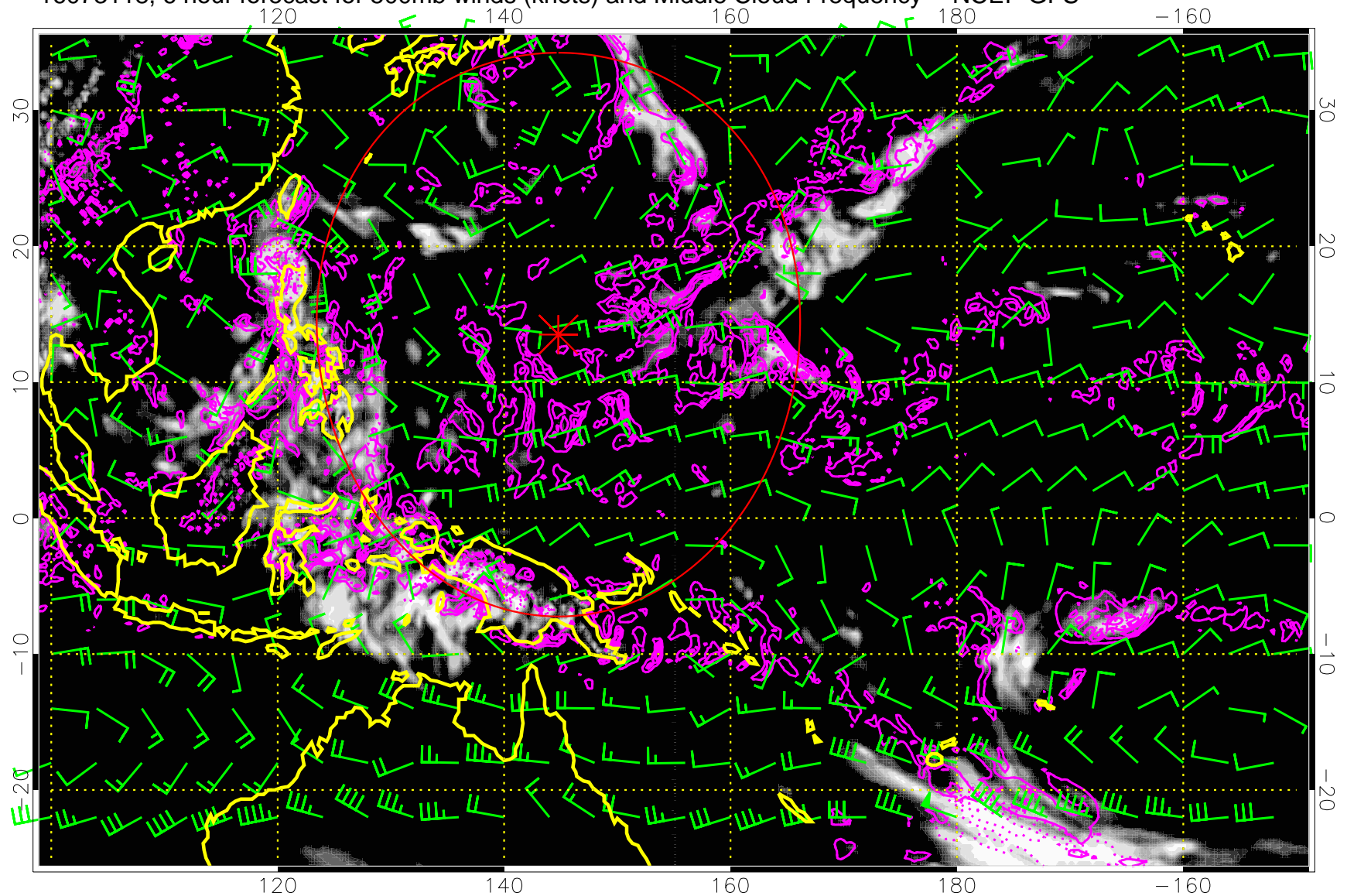


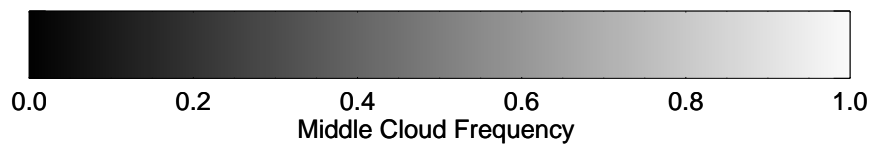
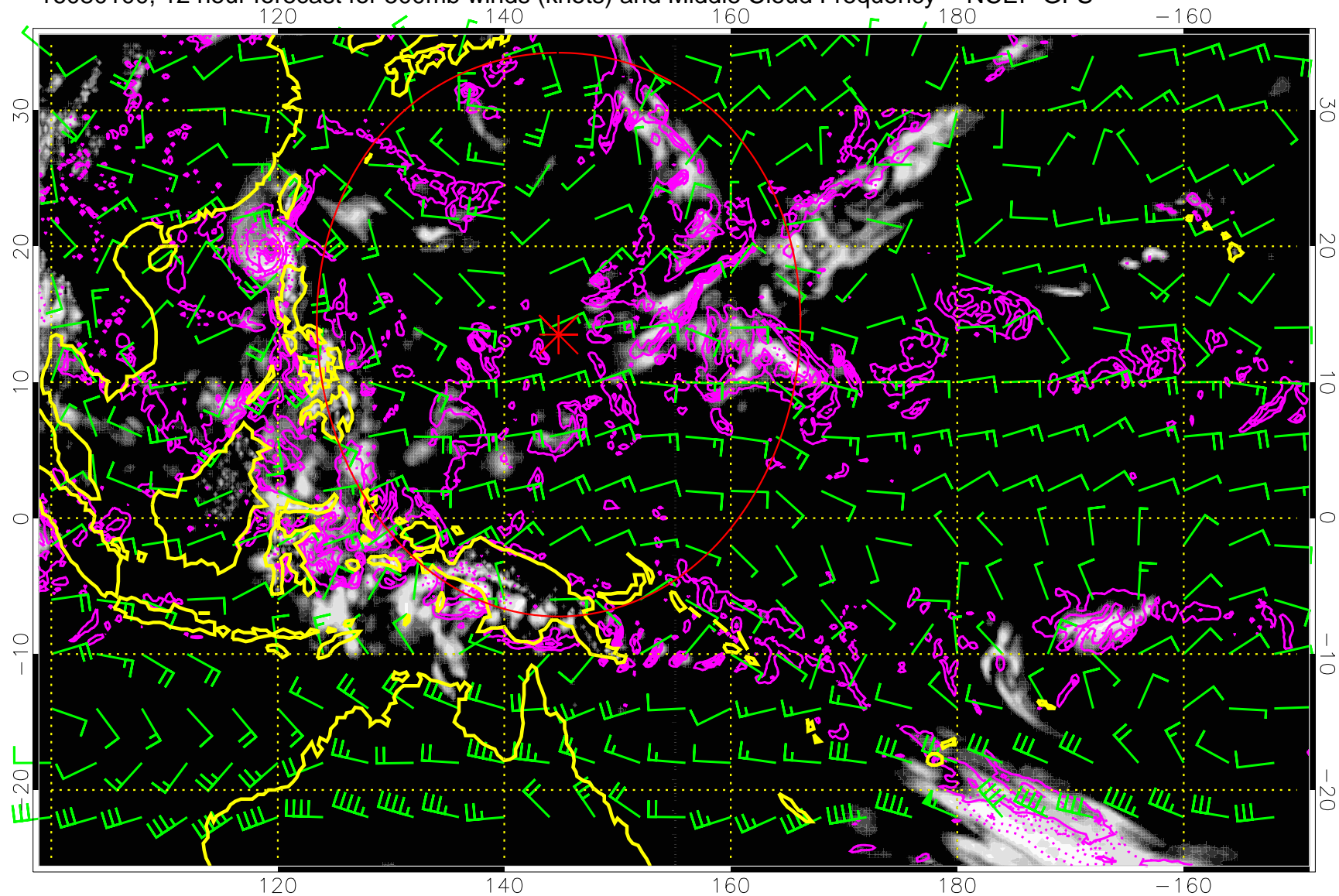
16073118, 6 hour forecast for 500mb winds (knots) and Middle Cloud Frequency -- NCEP GFS



Precip (tot dot, conv sol) mm/day 40 mm/day contours, min 20

Range ring of 2304 km

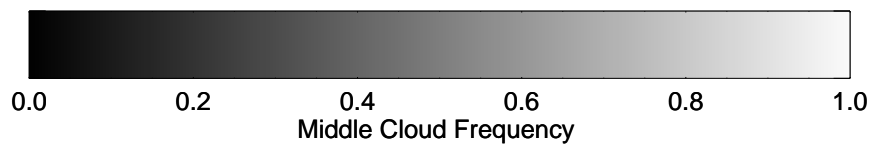
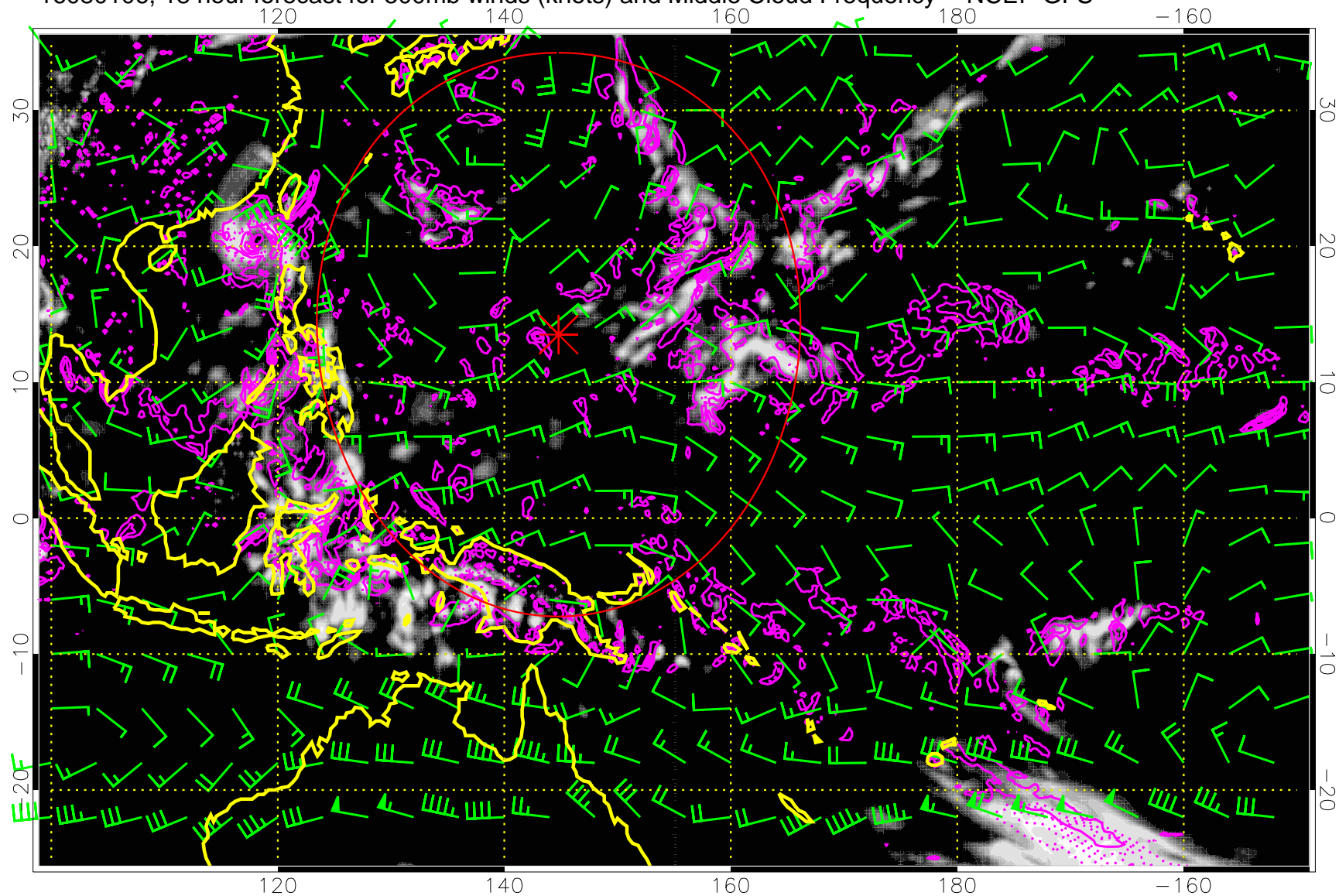
16080100, 12 hour forecast for 500mb winds (knots) and Middle Cloud Frequency -- NCEP GFS



Precip (tot dot, conv sol) mm/day 40 mm/day contours, min 20

Range ring of 2304 km

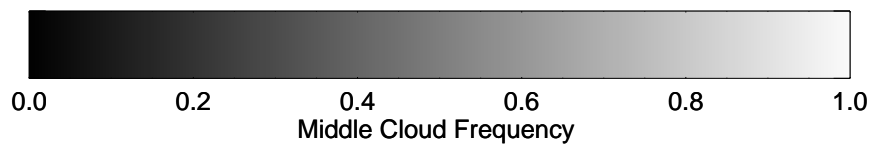
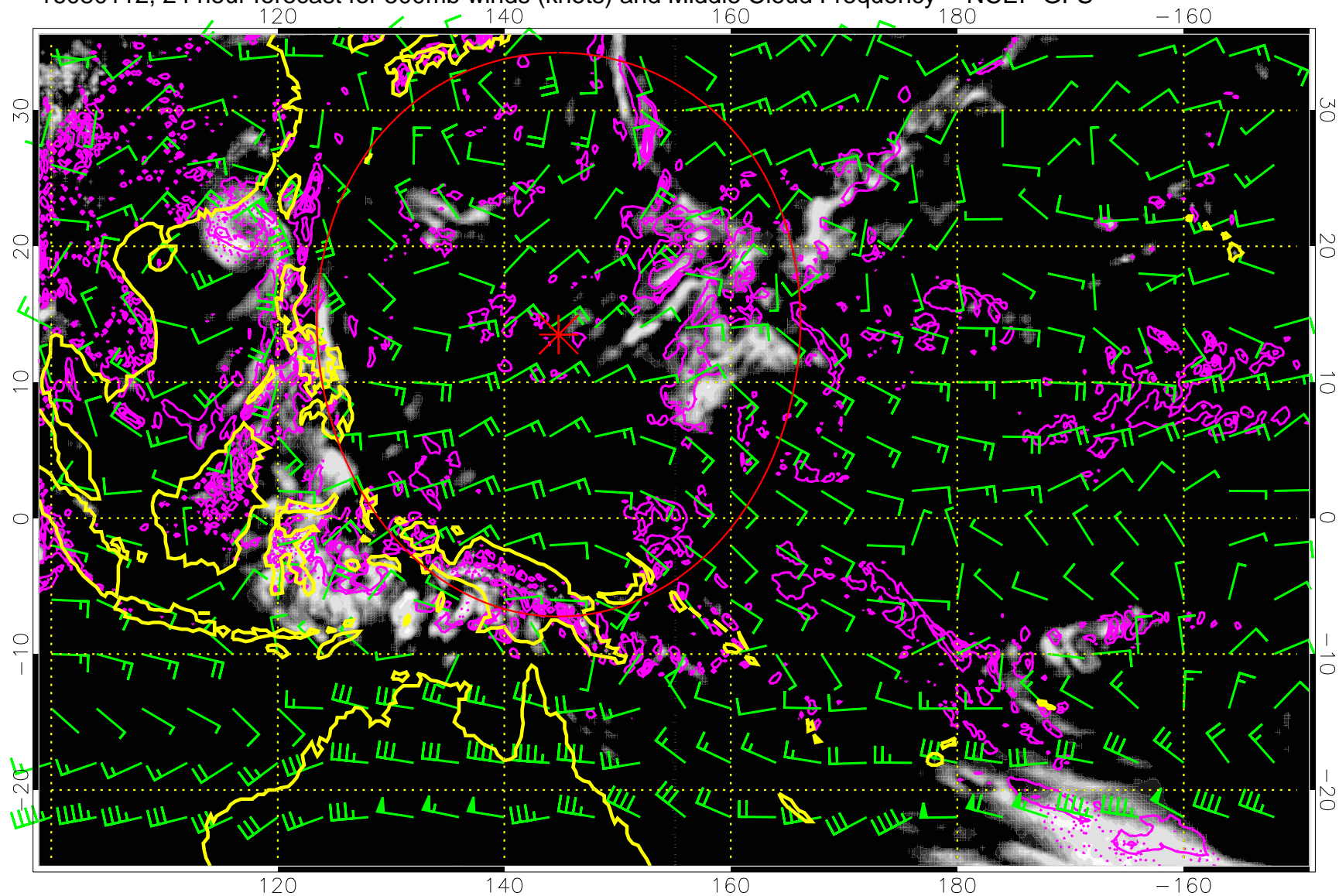
16080106, 18 hour forecast for 500mb winds (knots) and Middle Cloud Frequency -- NCEP GFS



Precip (tot dot, conv sol) mm/day 40 mm/day contours, min 20

Range ring of 2304 km

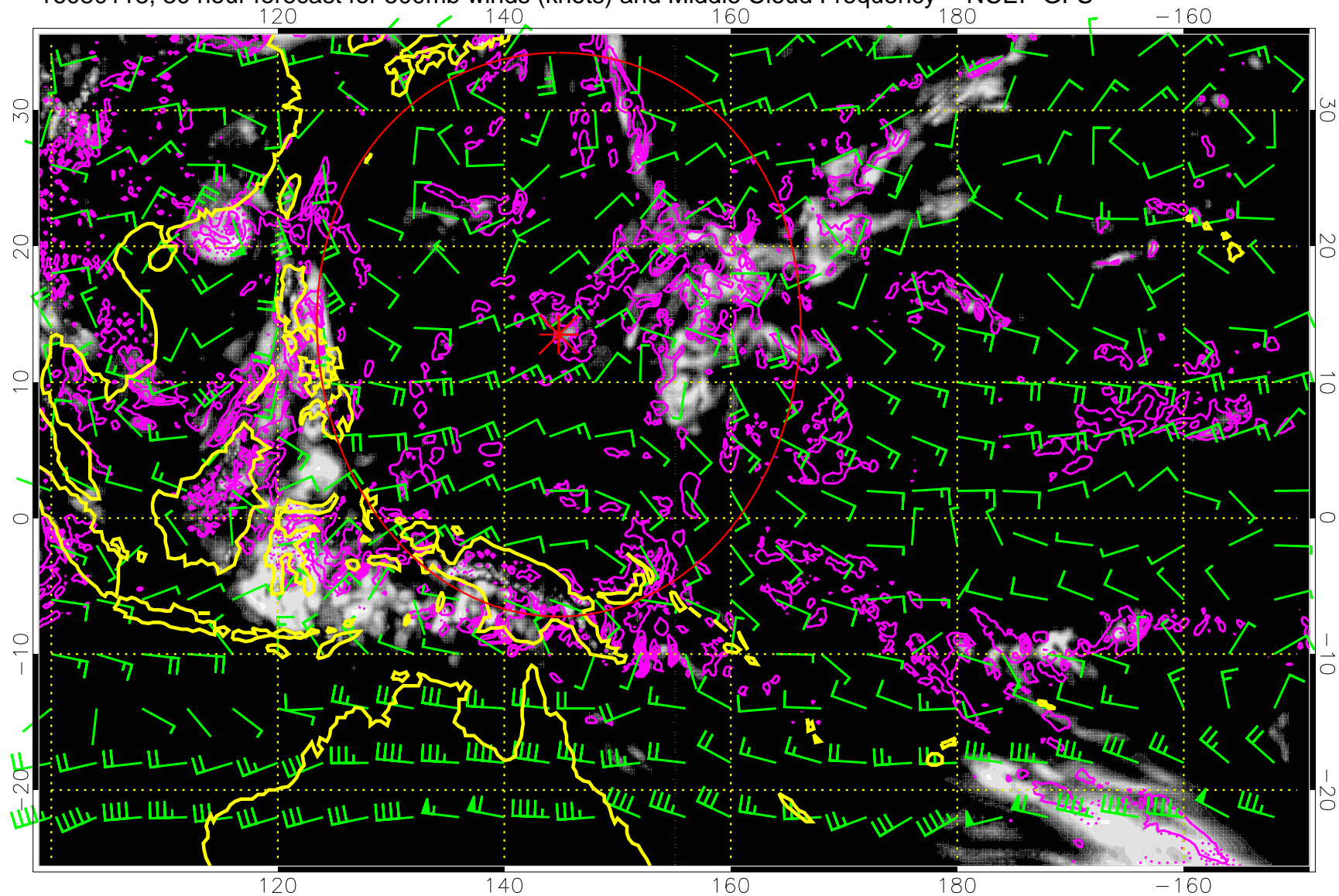
16080112, 24 hour forecast for 500mb winds (knots) and Middle Cloud Frequency -- NCEP GFS



Precip (tot dot, conv sol) mm/day 40 mm/day contours, min 20

Range ring of 2304 km

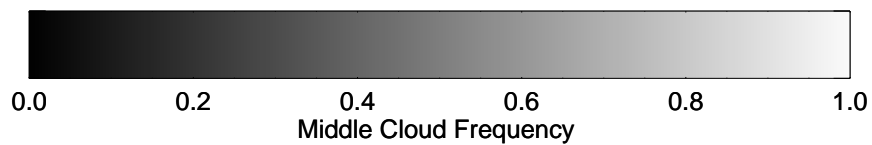
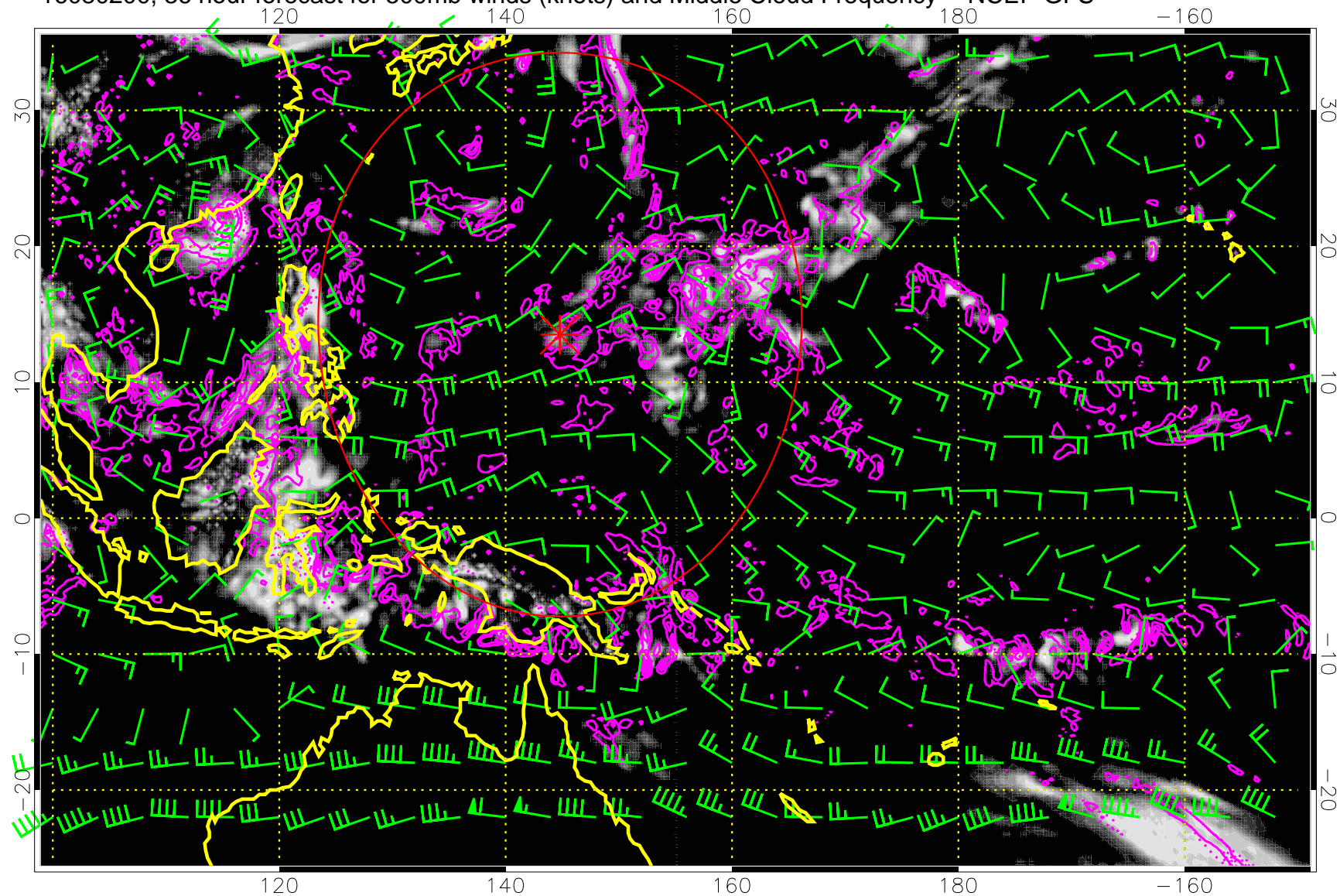
16080118, 30 hour forecast for 500mb winds (knots) and Middle Cloud Frequency -- NCEP GFS



Precip (tot dot, conv sol) mm/day 40 mm/day contours, min 20

Range ring of 2304 km

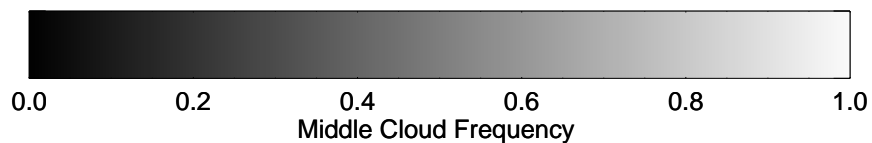
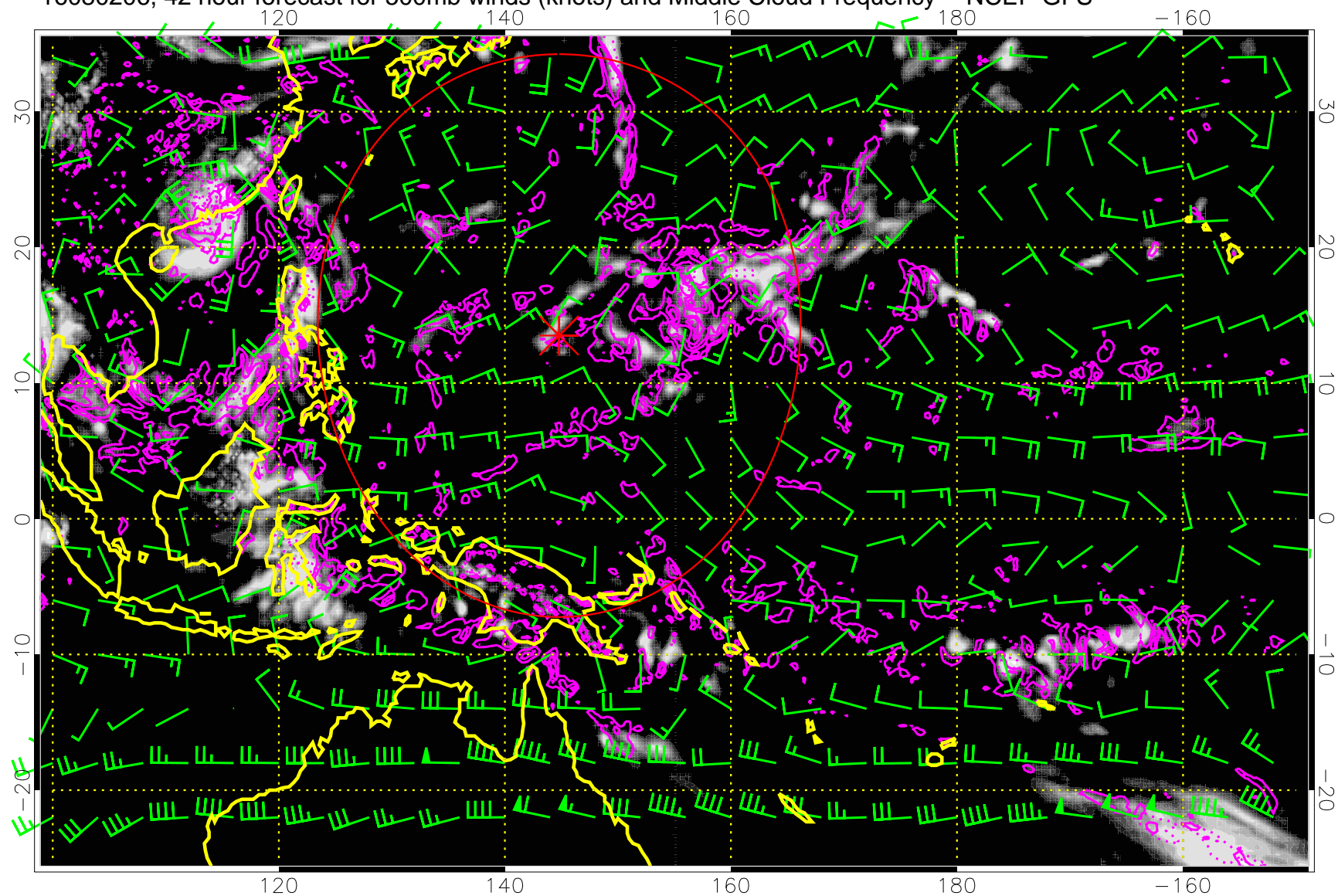
16080200, 36 hour forecast for 500mb winds (knots) and Middle Cloud Frequency -- NCEP GFS



Precip (tot dot, conv sol) mm/day 40 mm/day contours, min 20

Range ring of 2304 km

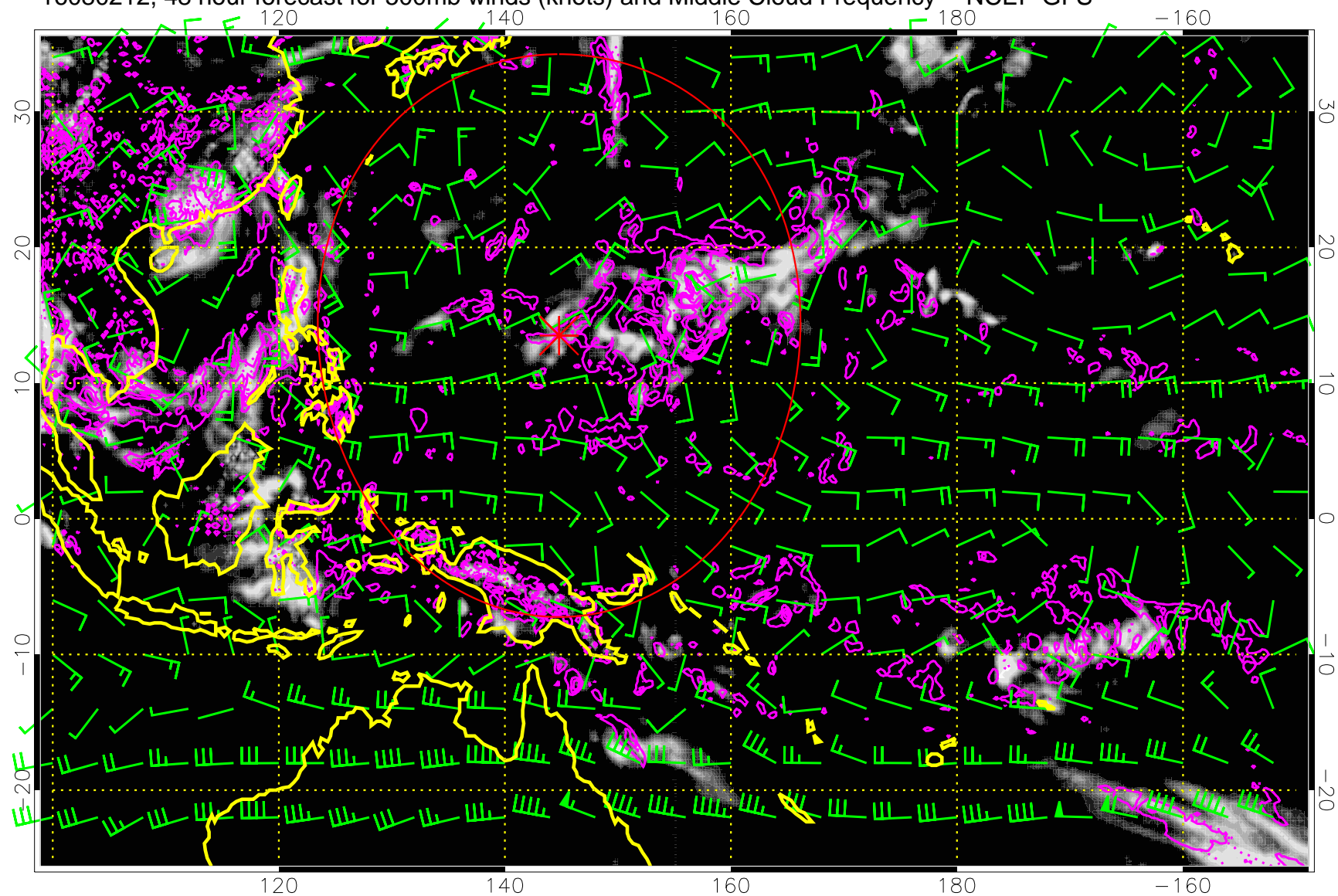
16080206, 42 hour forecast for 500mb winds (knots) and Middle Cloud Frequency -- NCEP GFS



Precip (tot dot, conv sol) mm/day 40 mm/day contours, min 20

Range ring of 2304 km

16080212, 48 hour forecast for 500mb winds (knots) and Middle Cloud Frequency -- NCEP GFS

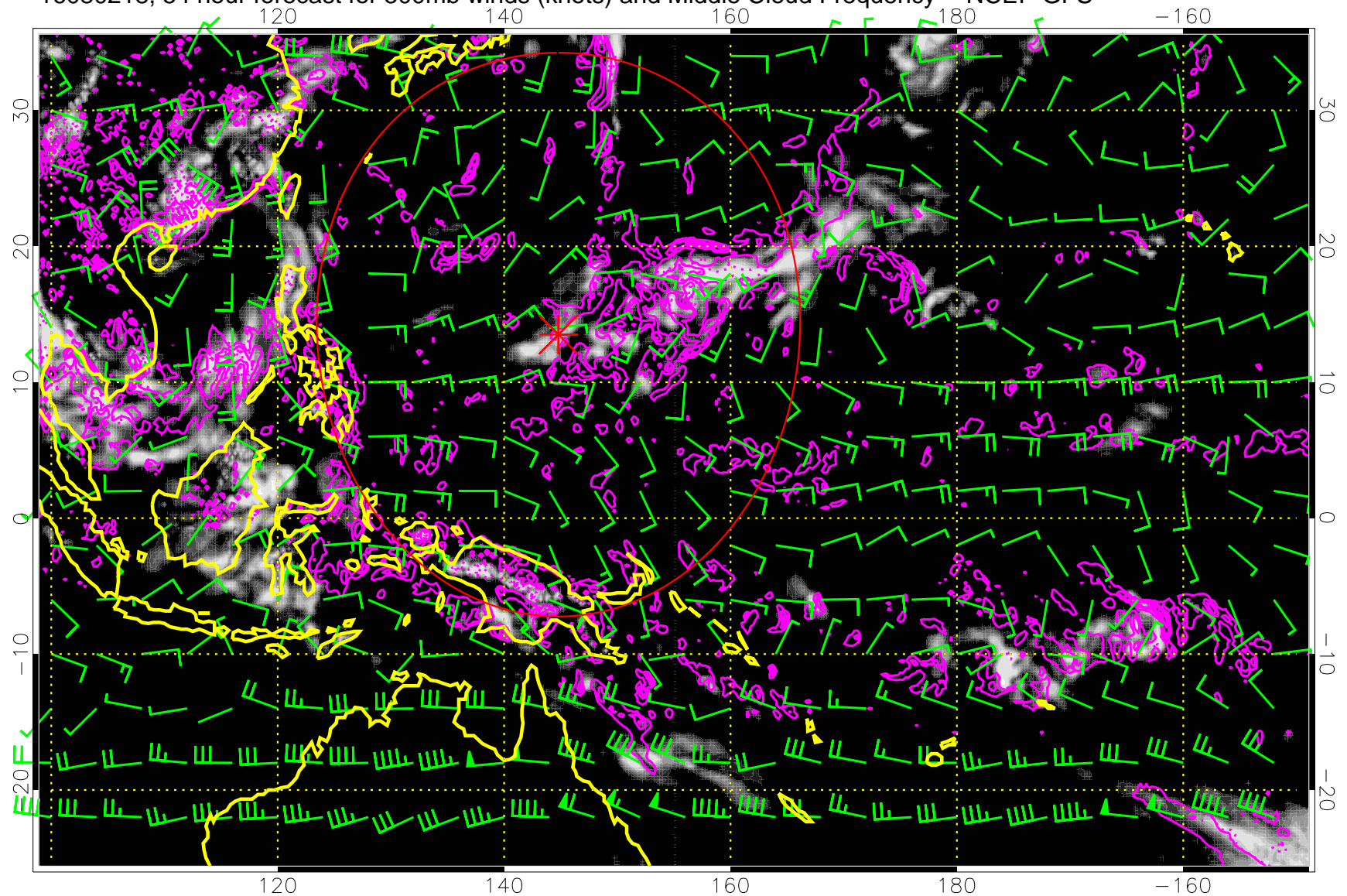


Precip (tot dot, conv sol) mm/day 40 mm/day contours, min 20

0.0 0.2 0.4 0.6 0.8 1.0
Middle Cloud Frequency

Range ring of 2304 km

16080218, 54 hour forecast for 500mb winds (knots) and Middle Cloud Frequency -- NCEP GFS

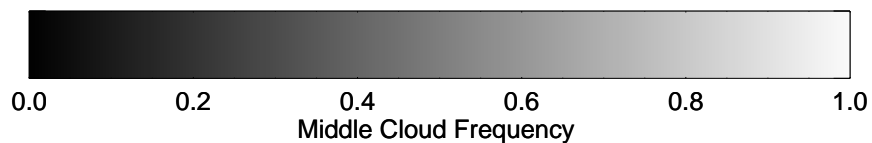
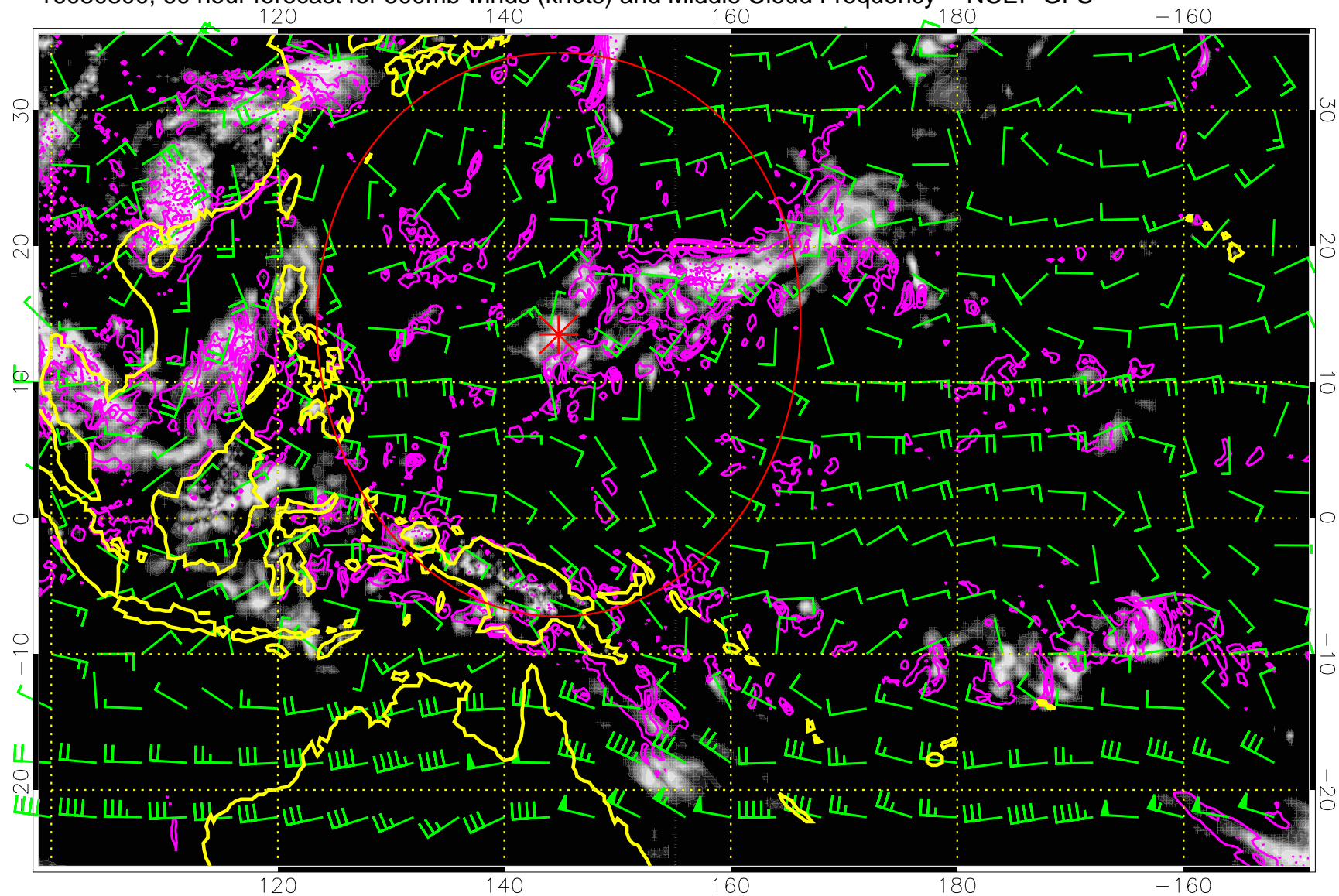


Precip (tot dot, conv sol) mm/day 40 mm/day contours, min 20

0.0 0.2 0.4 0.6 0.8 1.0
Middle Cloud Frequency

Range ring of 2304 km

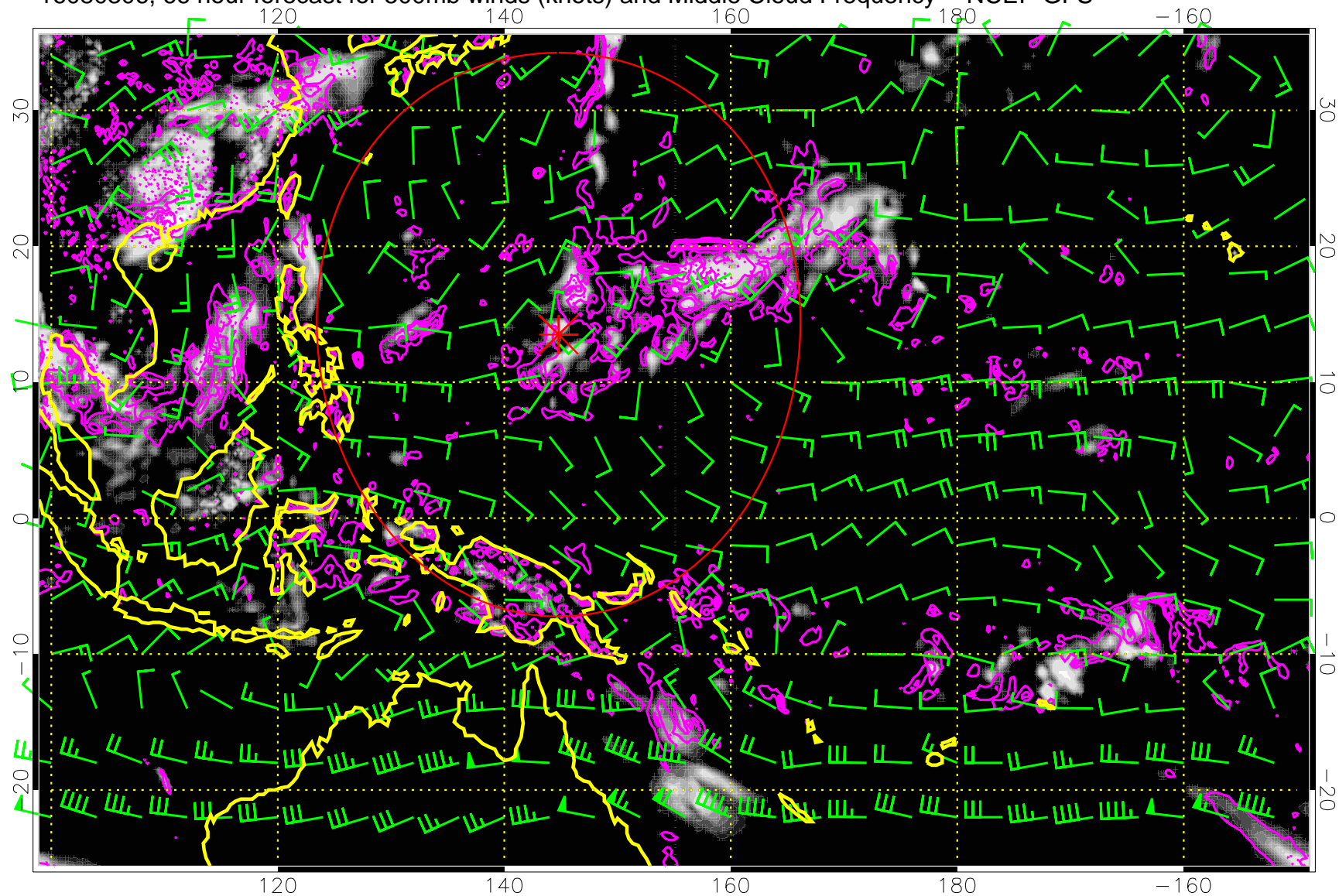
16080300, 60 hour forecast for 500mb winds (knots) and Middle Cloud Frequency -- NCEP GFS



Precip (tot dot, conv sol) mm/day 40 mm/day contours, min 20

Range ring of 2304 km

16080306, 66 hour forecast for 500mb winds (knots) and Middle Cloud Frequency -- NCEP GFS

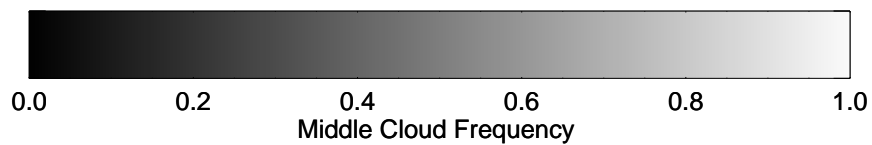
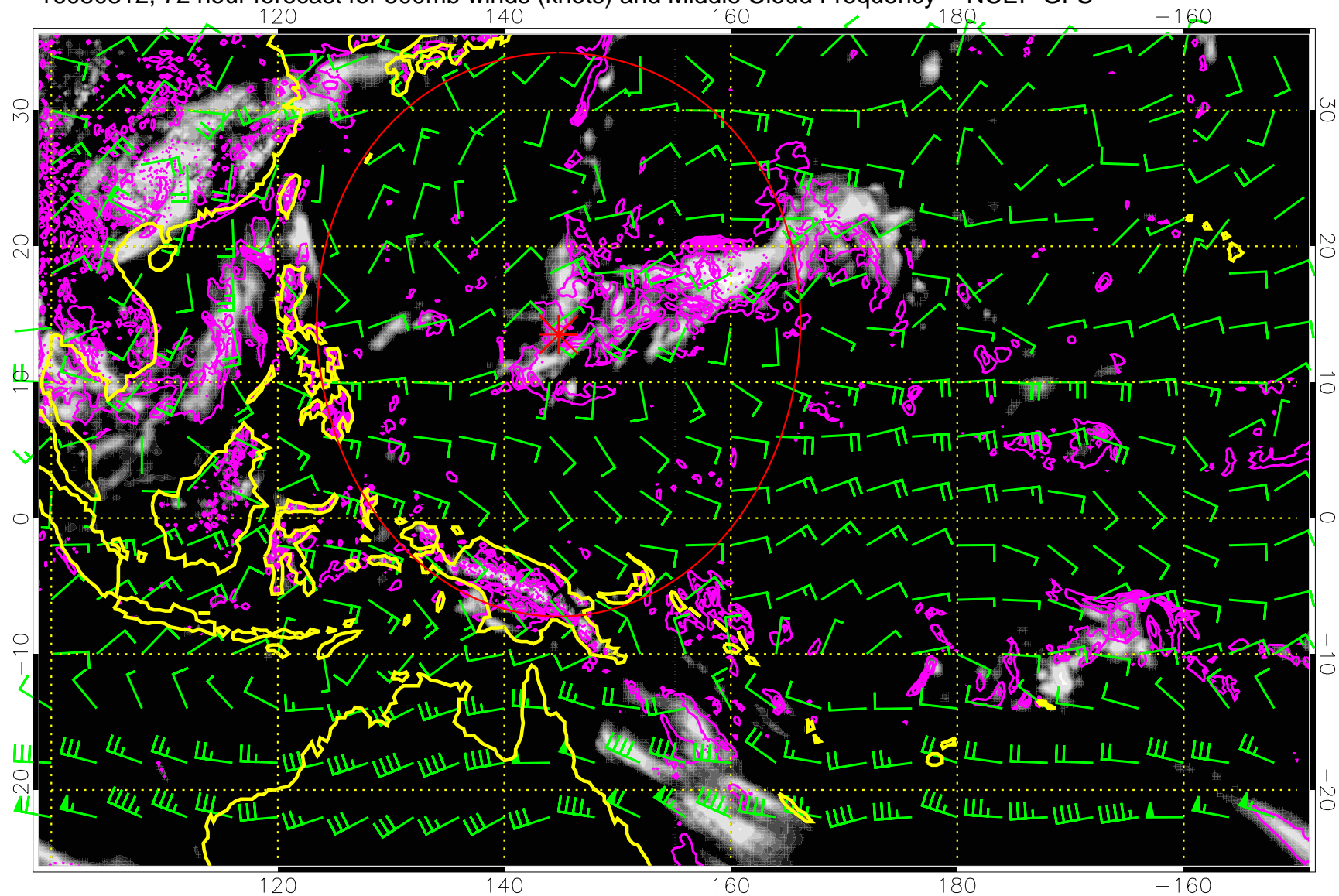


Precip (tot dot, conv sol) mm/day 40 mm/day contours, min 20

0.0 0.2 0.4 0.6 0.8 1.0
Middle Cloud Frequency

Range ring of 2304 km

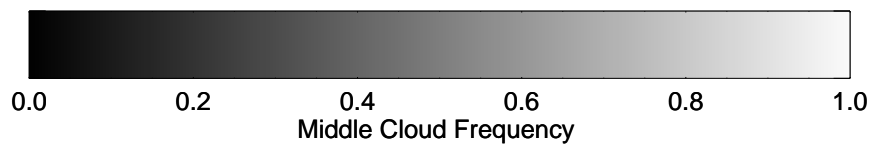
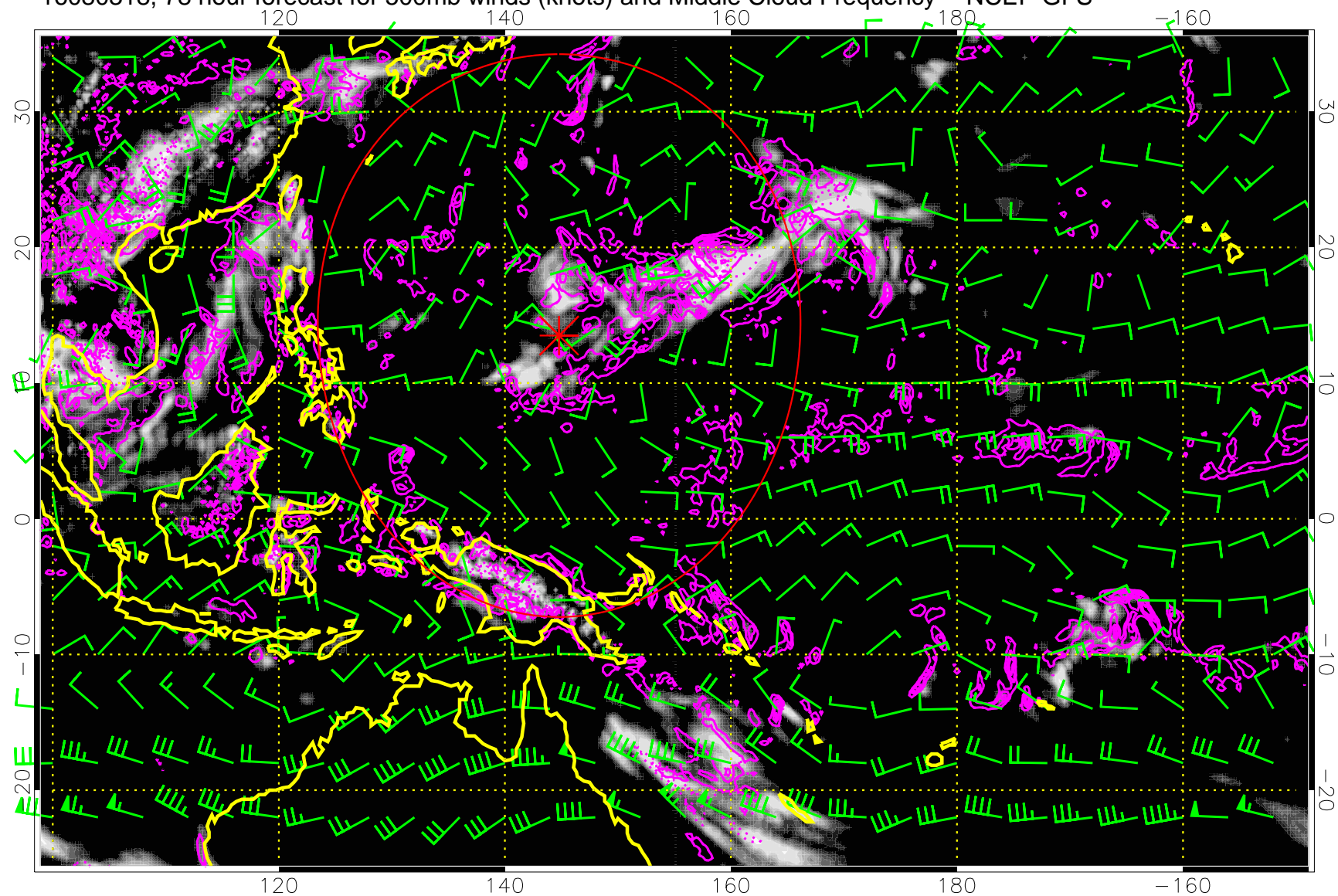
16080312, 72 hour forecast for 500mb winds (knots) and Middle Cloud Frequency -- NCEP GFS



Precip (tot dot, conv sol) mm/day 40 mm/day contours, min 20

Range ring of 2304 km

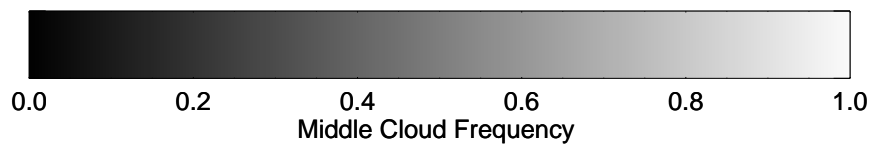
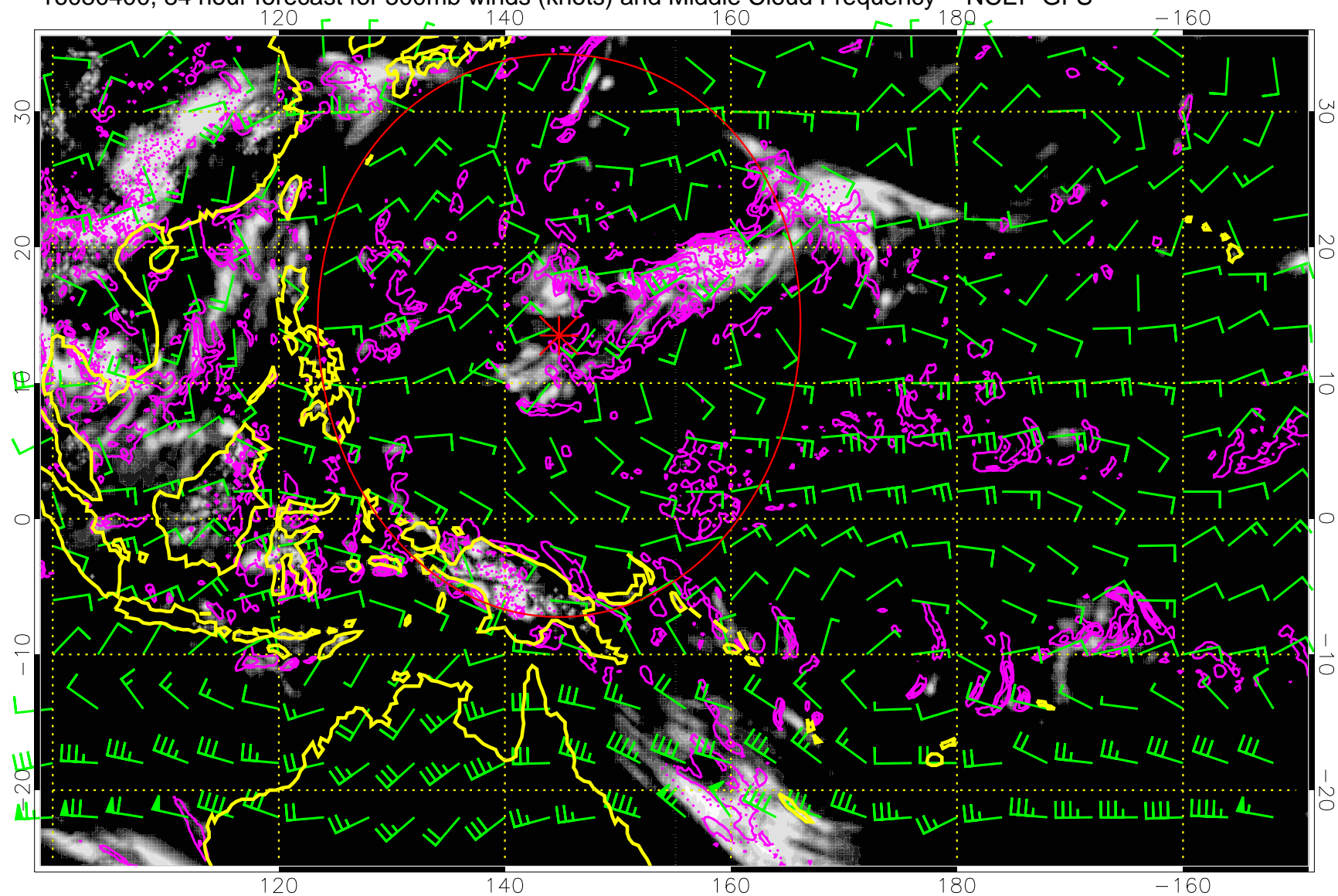
16080318, 78 hour forecast for 500mb winds (knots) and Middle Cloud Frequency -- NCEP GFS



Precip (tot dot, conv sol) mm/day 40 mm/day contours, min 20

Range ring of 2304 km

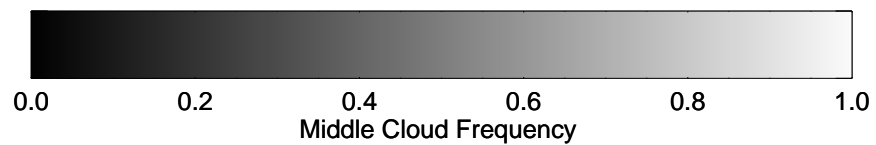
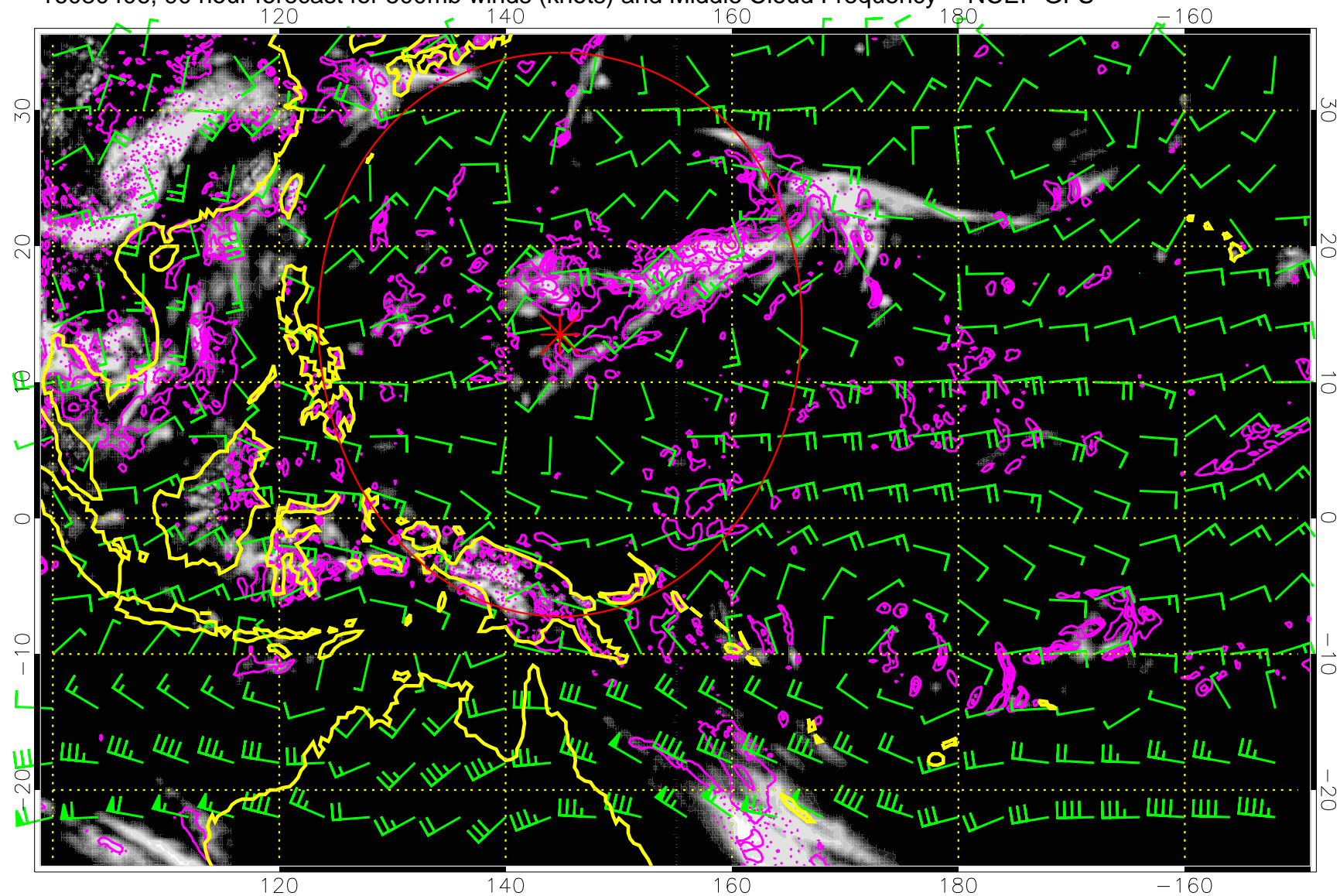
16080400, 84 hour forecast for 500mb winds (knots) and Middle Cloud Frequency -- NCEP GFS



Precip (tot dot, conv sol) mm/day 40 mm/day contours, min 20

Range ring of 2304 km

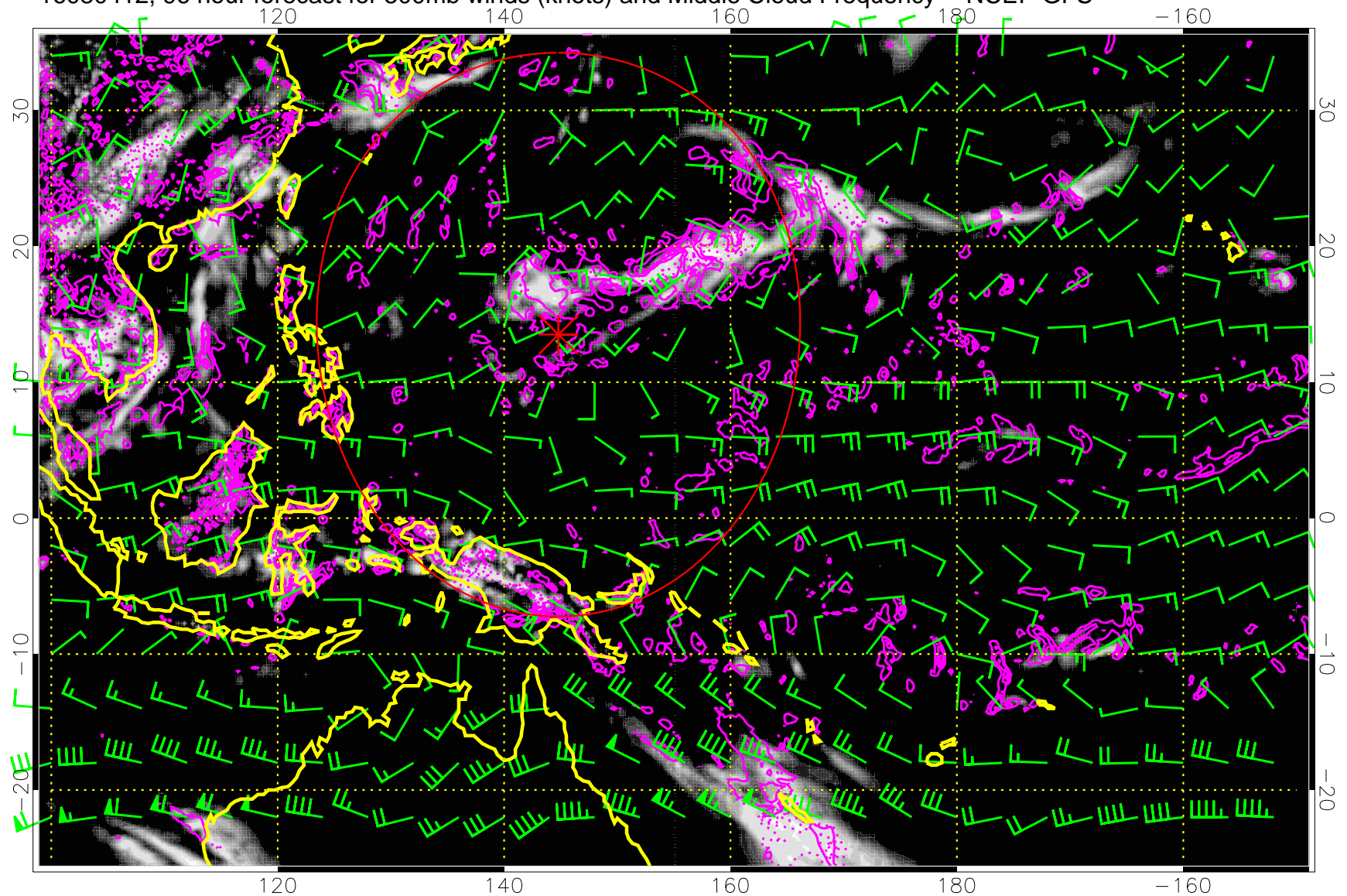
16080406, 90 hour forecast for 500mb winds (knots) and Middle Cloud Frequency -- NCEP GFS



Precip (tot dot, conv sol) mm/day 40 mm/day contours, min 20

Range ring of 2304 km

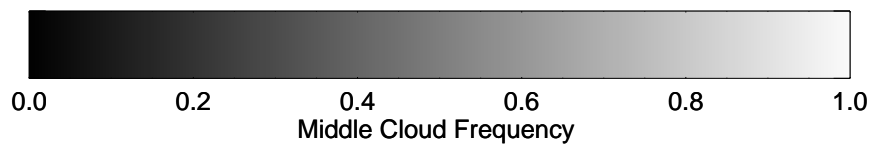
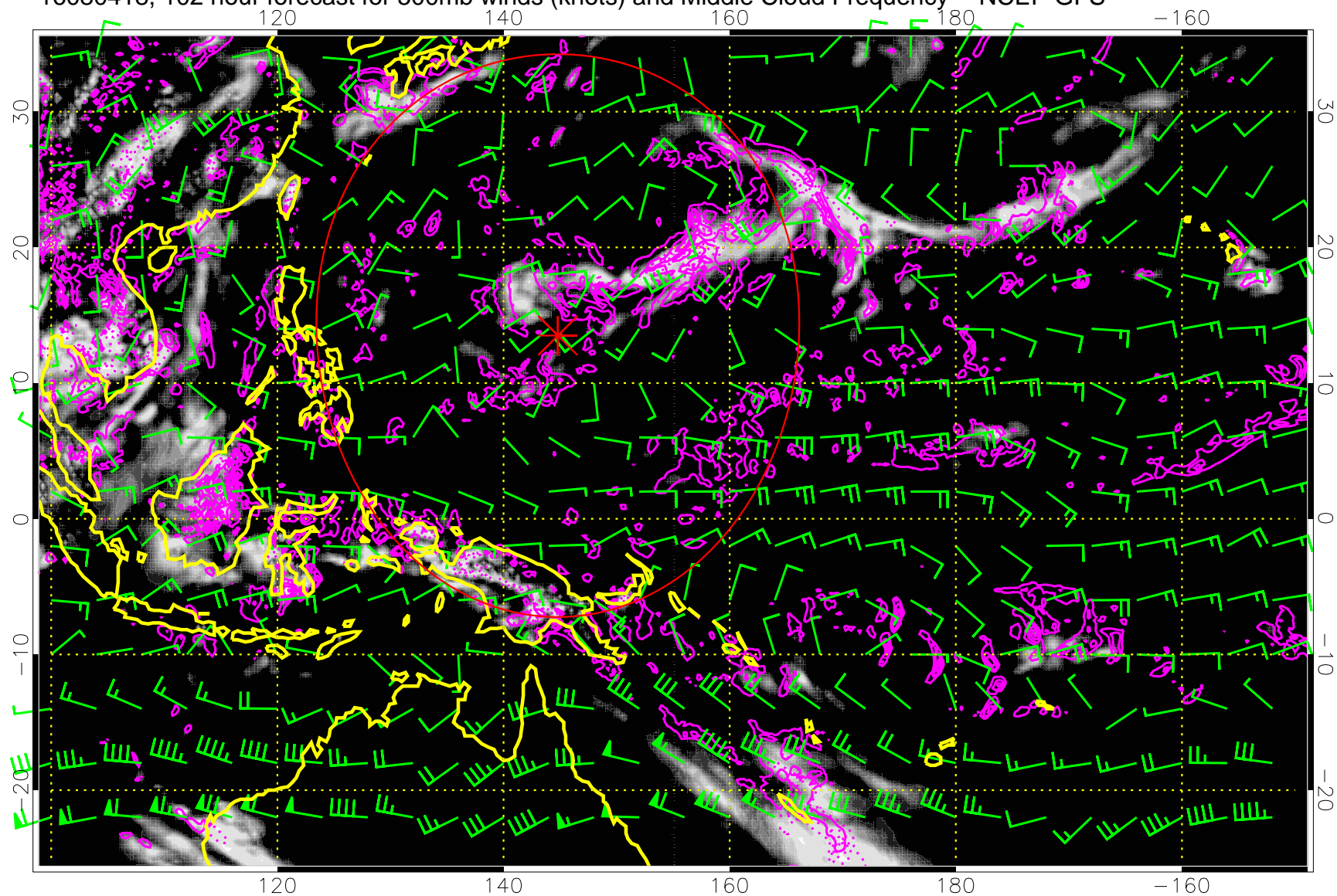
16080412, 96 hour forecast for 500mb winds (knots) and Middle Cloud Frequency -- NCEP GFS



Precip (tot dot, conv sol) mm/day 40 mm/day contours, min 20

Range ring of 2304 km

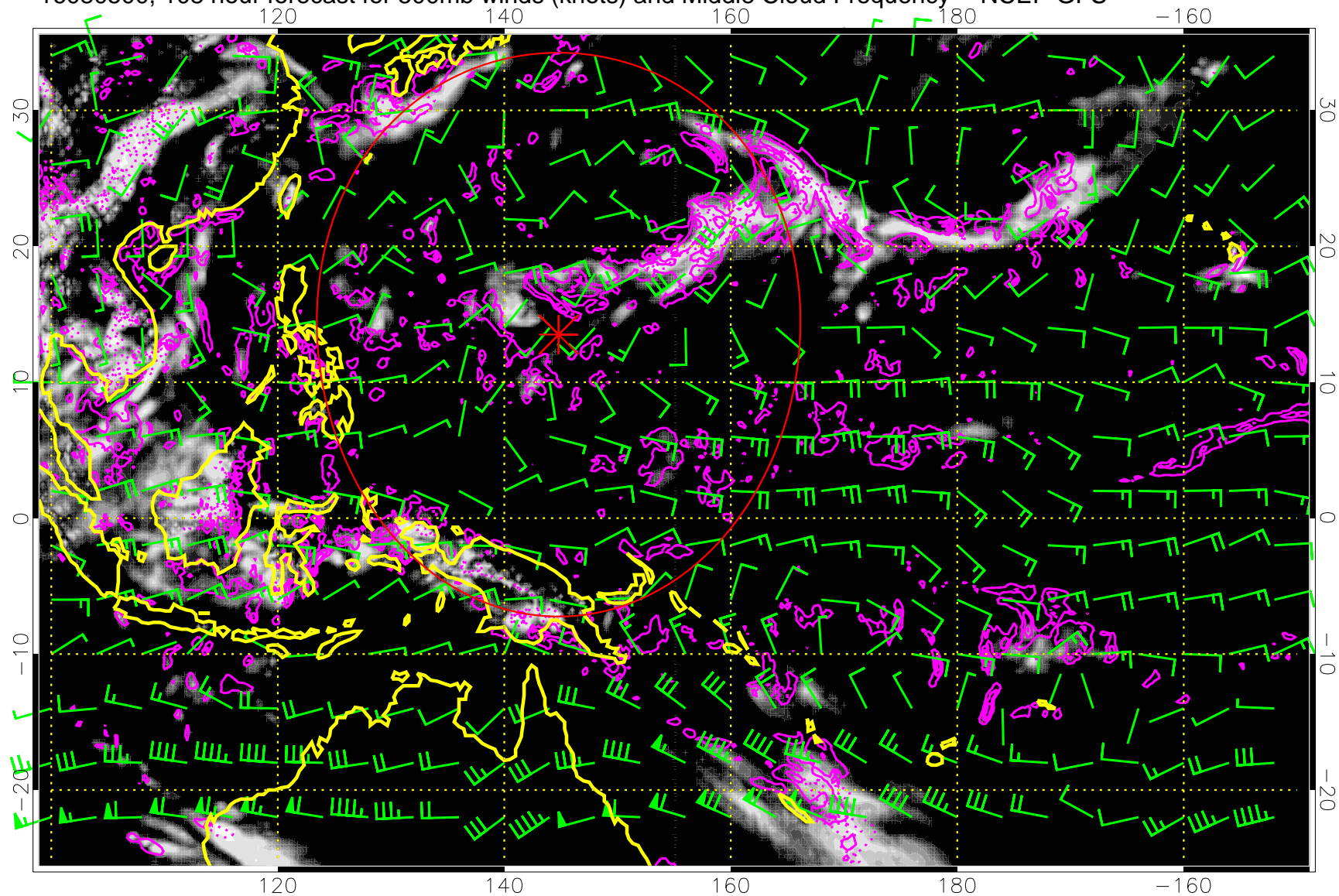
16080418, 102 hour forecast for 500mb winds (knots) and Middle Cloud Frequency -- NCEP GFS



Precip (tot dot, conv sol) mm/day 40 mm/day contours, min 20

Range ring of 2304 km

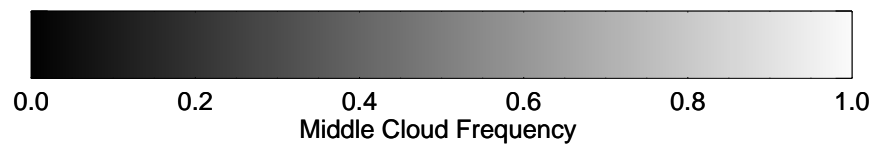
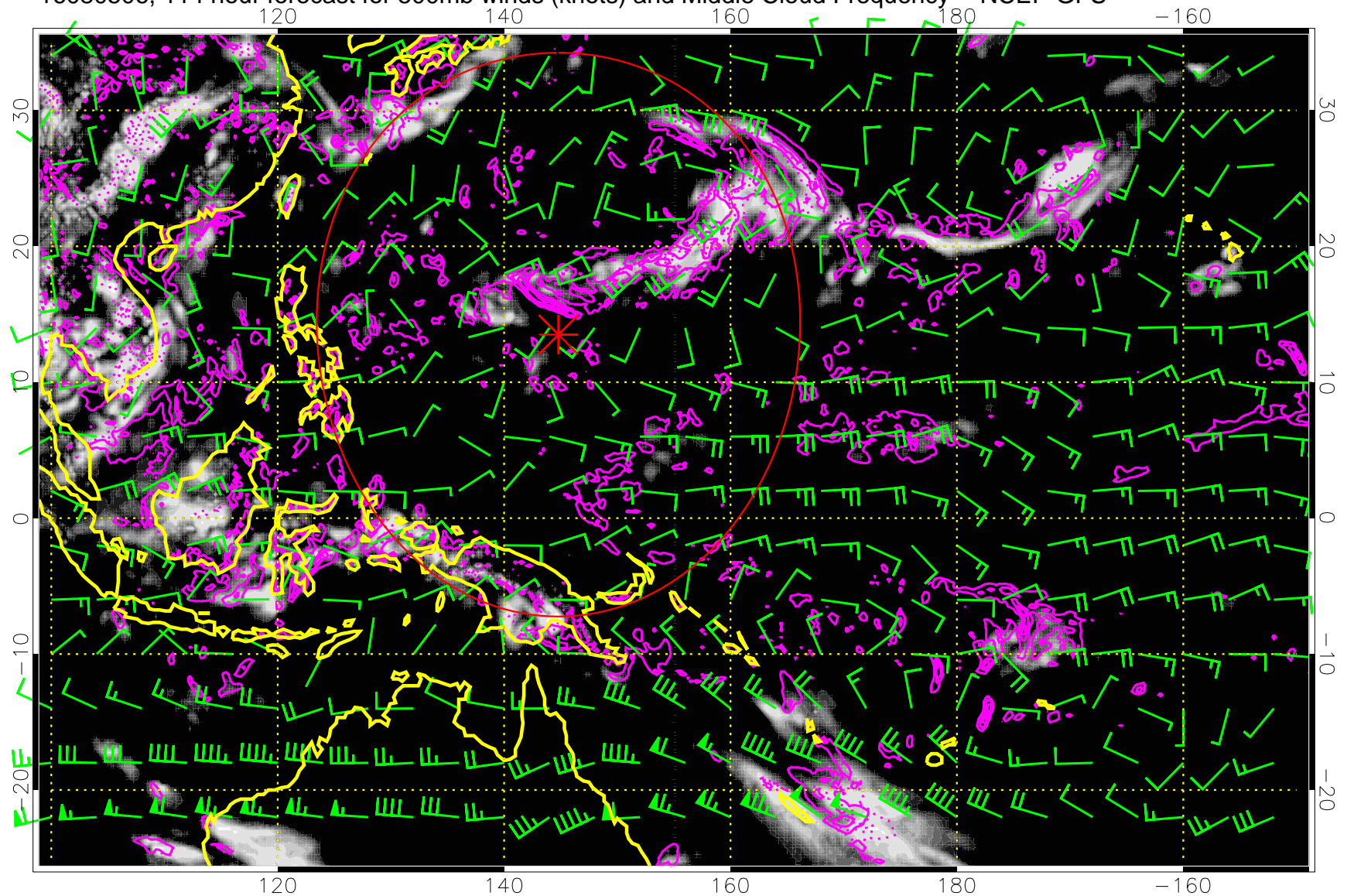
16080500, 108 hour forecast for 500mb winds (knots) and Middle Cloud Frequency -- NCEP GFS



Precip (tot dot, conv sol) mm/day 40 mm/day contours, min 20

Range ring of 2304 km

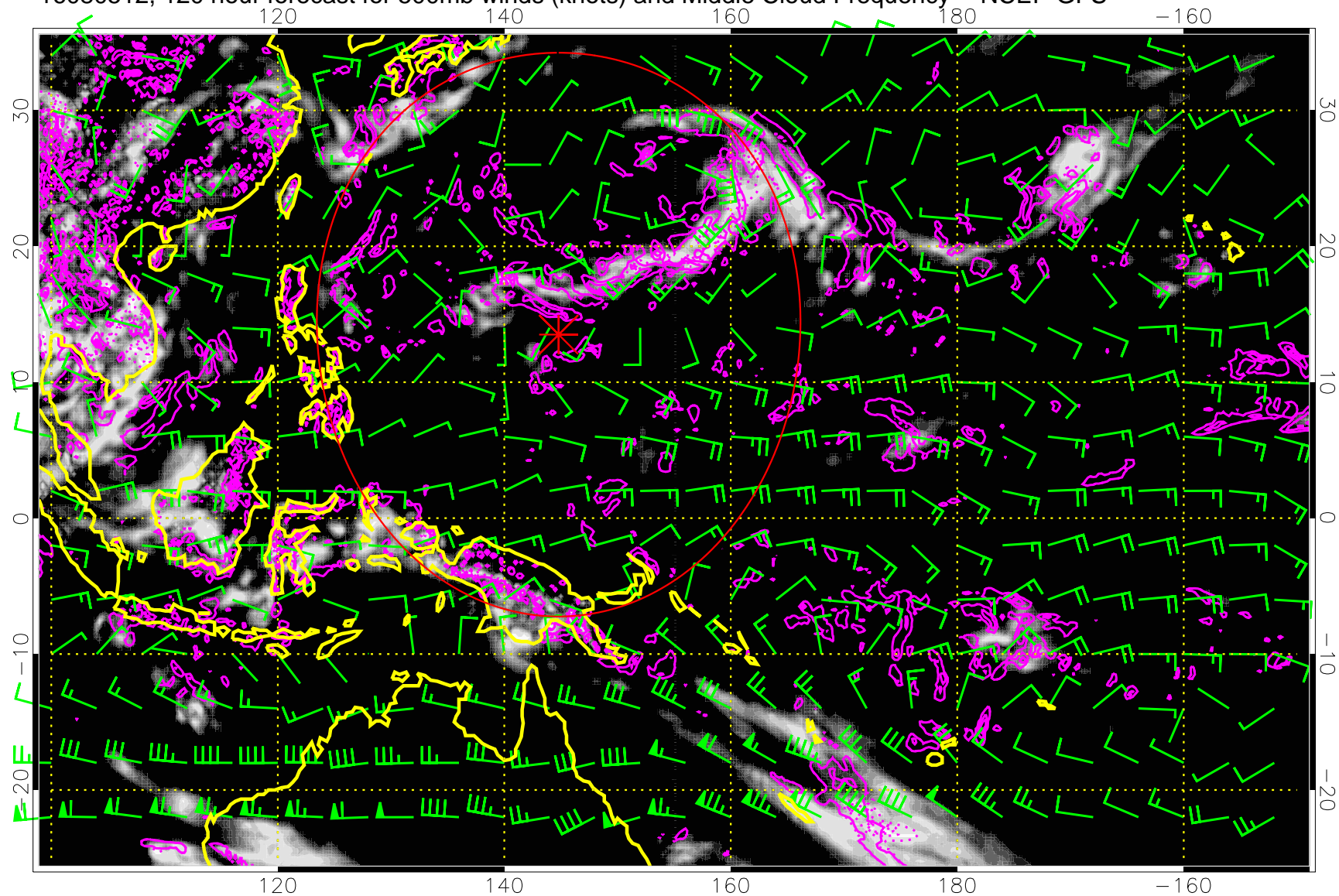
16080506, 114 hour forecast for 500mb winds (knots) and Middle Cloud Frequency -- NCEP GFS



Precip (tot dot, conv sol) mm/day 40 mm/day contours, min 20

Range ring of 2304 km

16080512, 120 hour forecast for 500mb winds (knots) and Middle Cloud Frequency -- NCEP GFS



Precip (tot dot, conv sol) mm/day 40 mm/day contours, min 20

Range ring of 2304 km