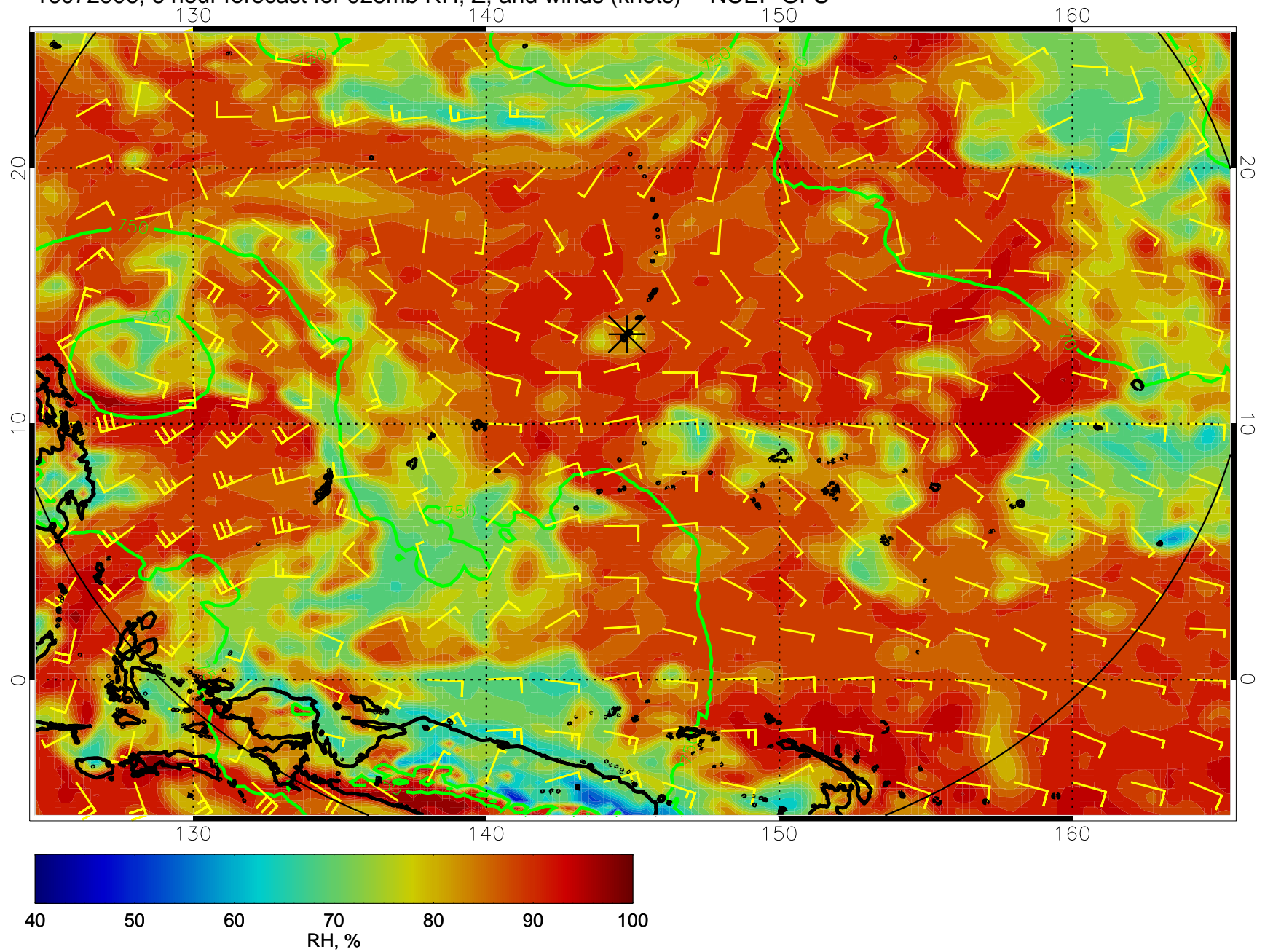
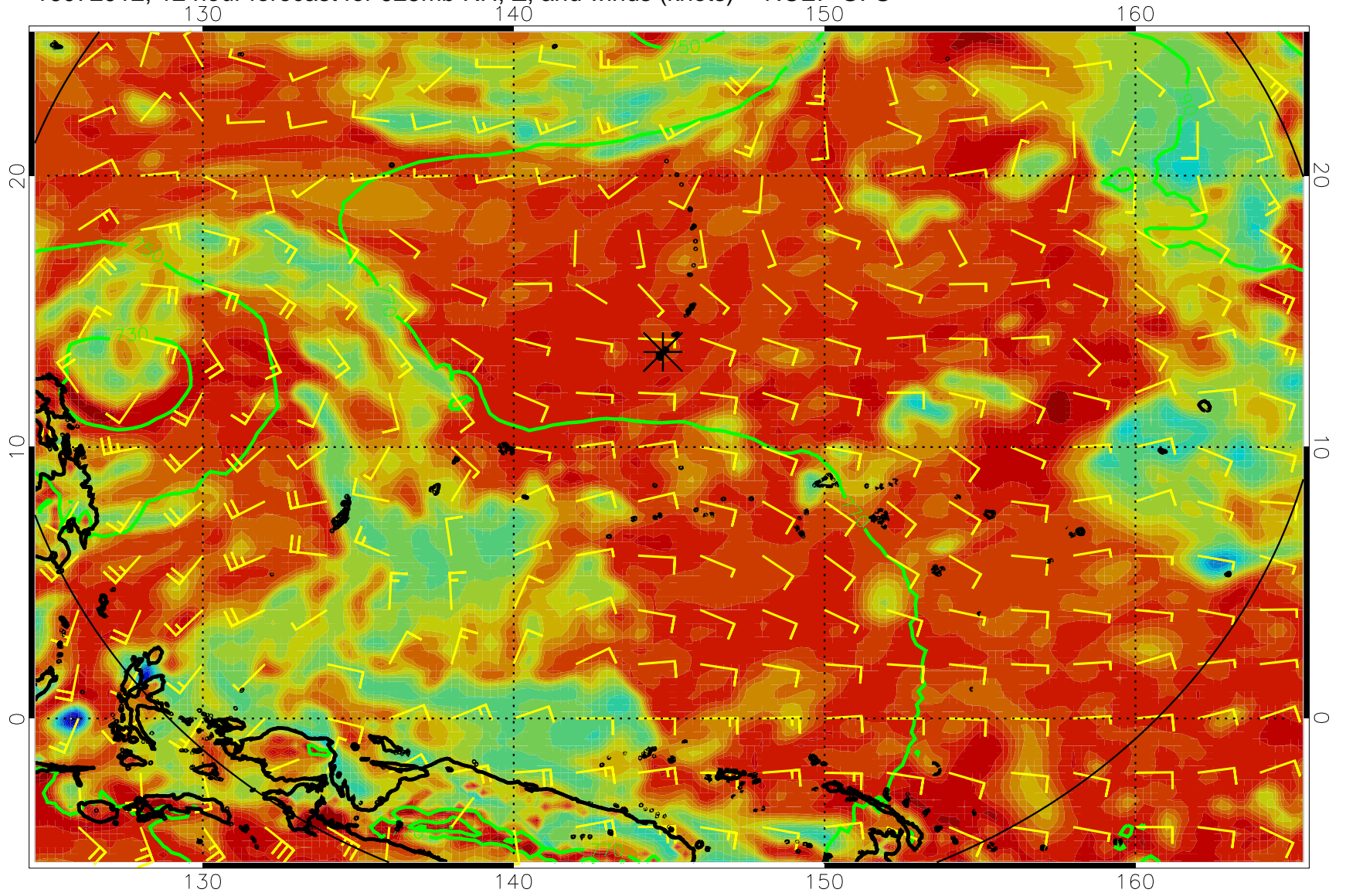


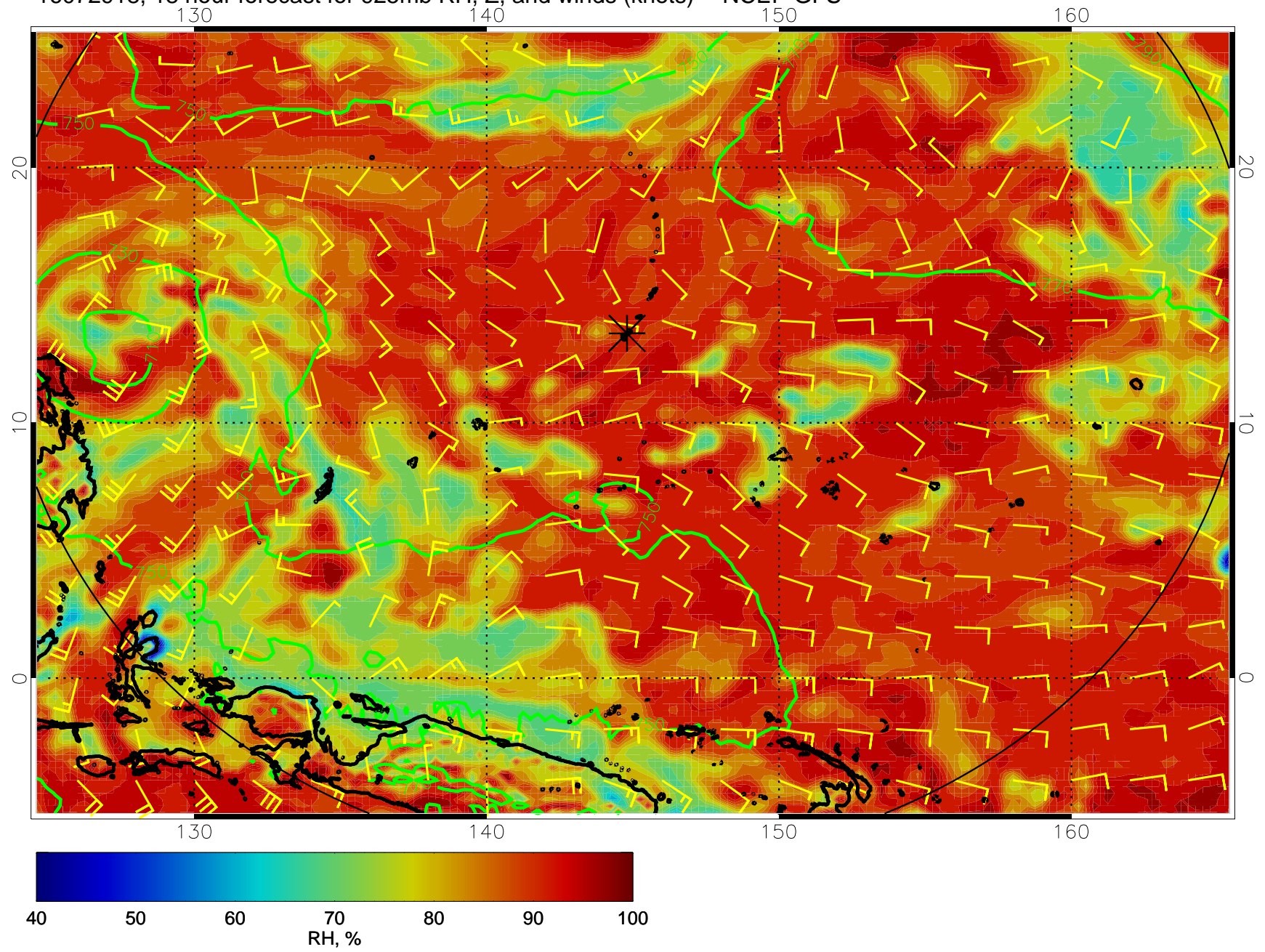
16072906, 6 hour forecast for 925mb RH, Z, and winds (knots) -- NCEP GFS



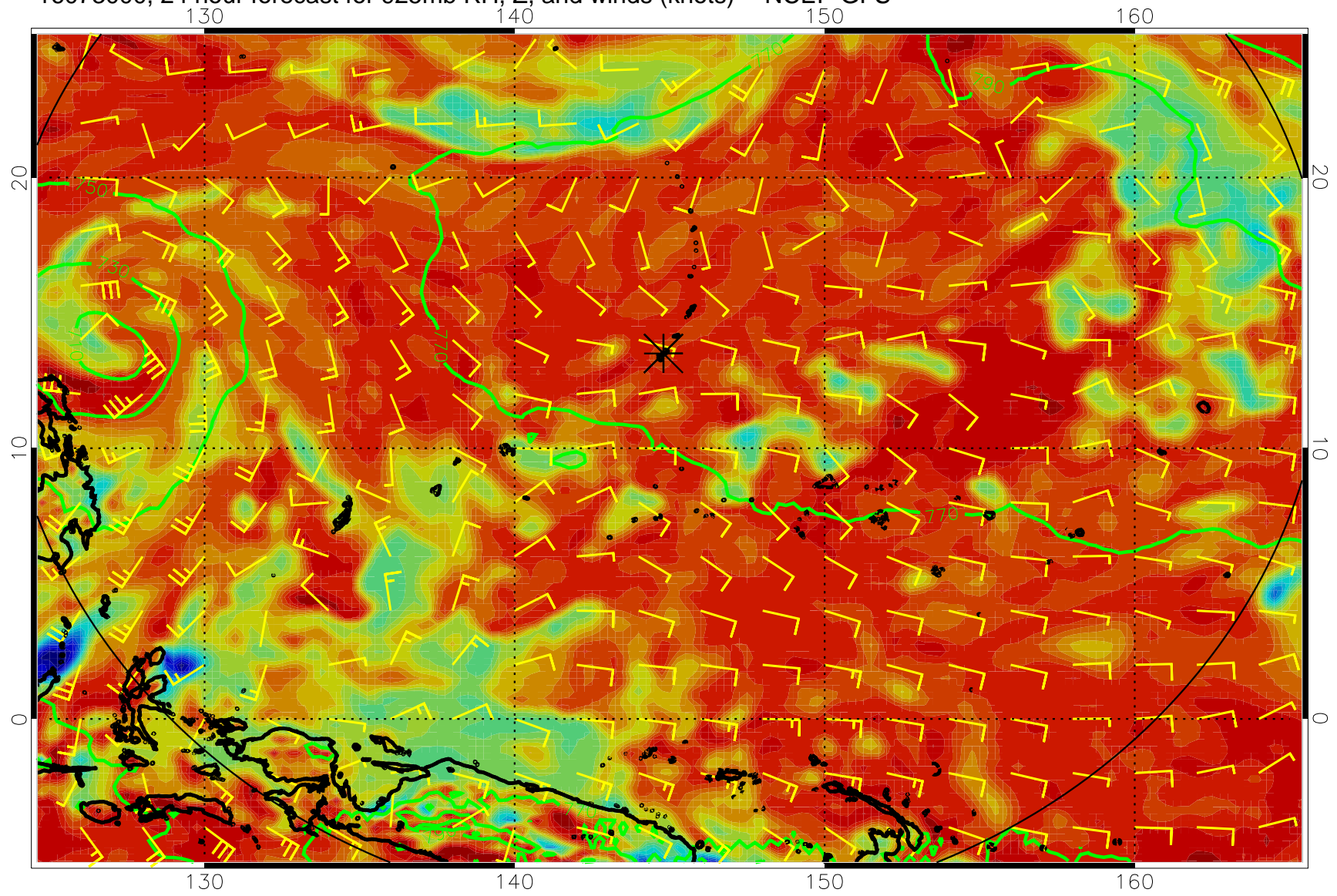
16072912, 12 hour forecast for 925mb RH, Z, and winds (knots) -- NCEP GFS



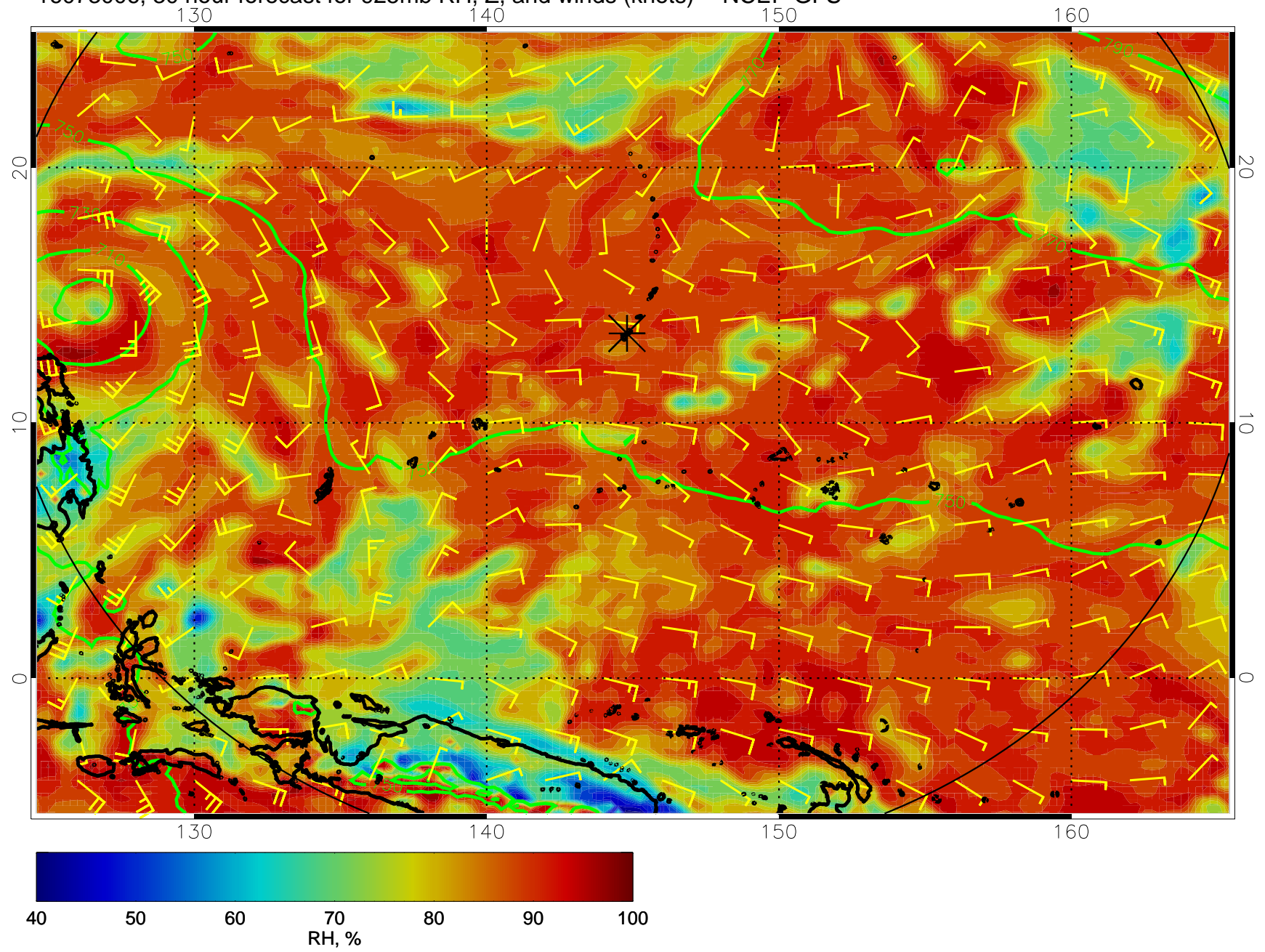
16072918, 18 hour forecast for 925mb RH, Z, and winds (knots) -- NCEP GFS



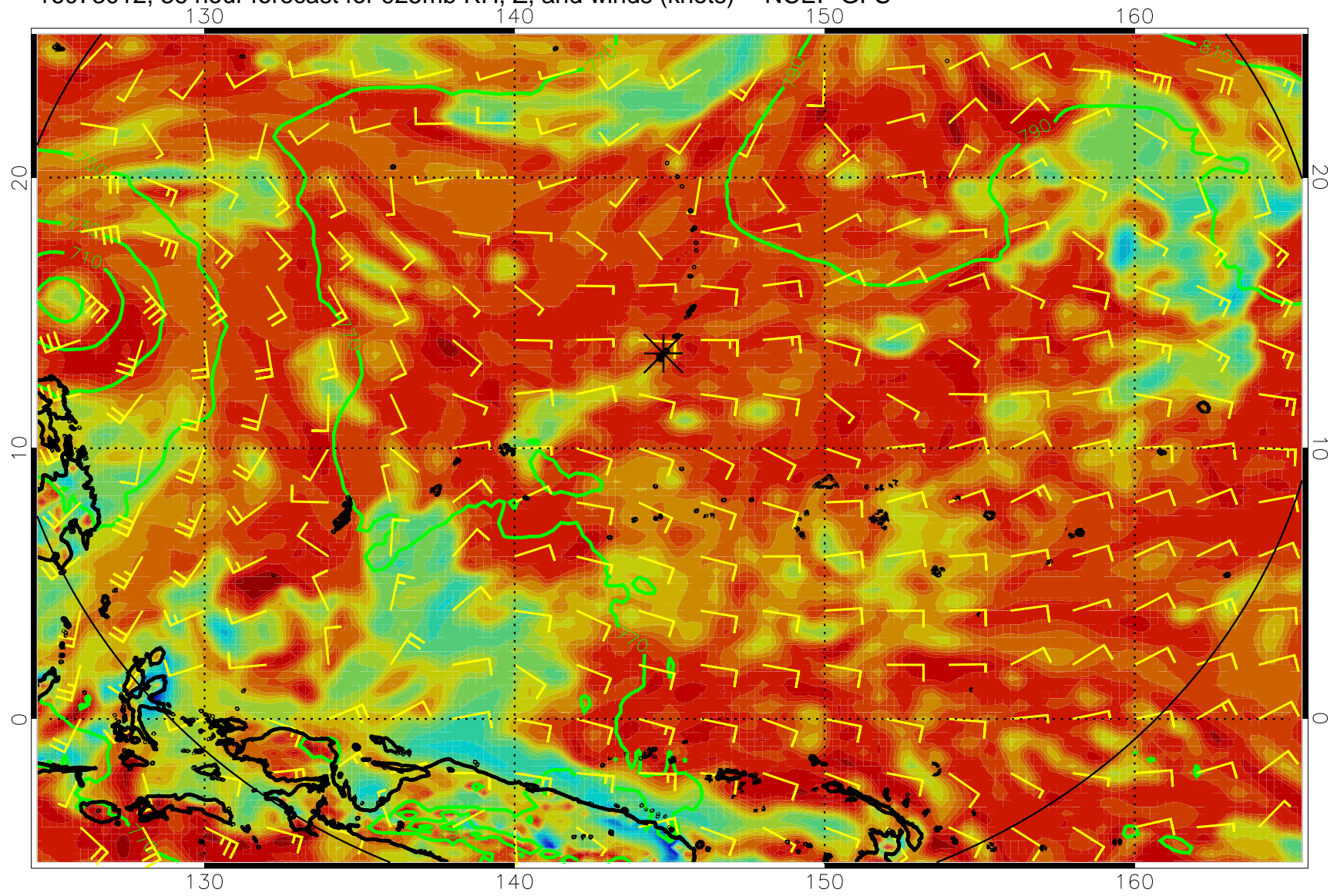
16073000, 24 hour forecast for 925mb RH, Z, and winds (knots) -- NCEP GFS



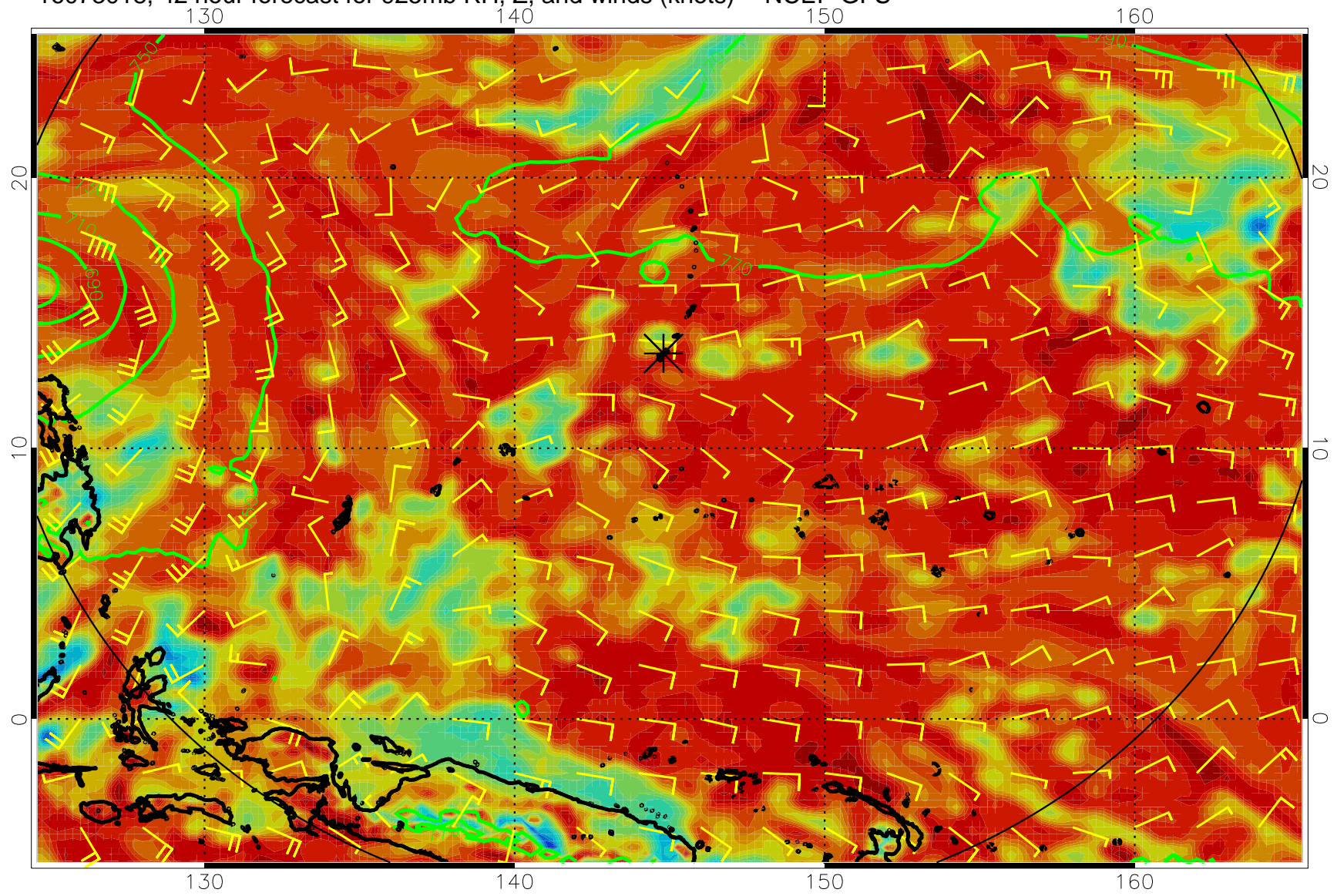
16073006, 30 hour forecast for 925mb RH, Z, and winds (knots) -- NCEP GFS



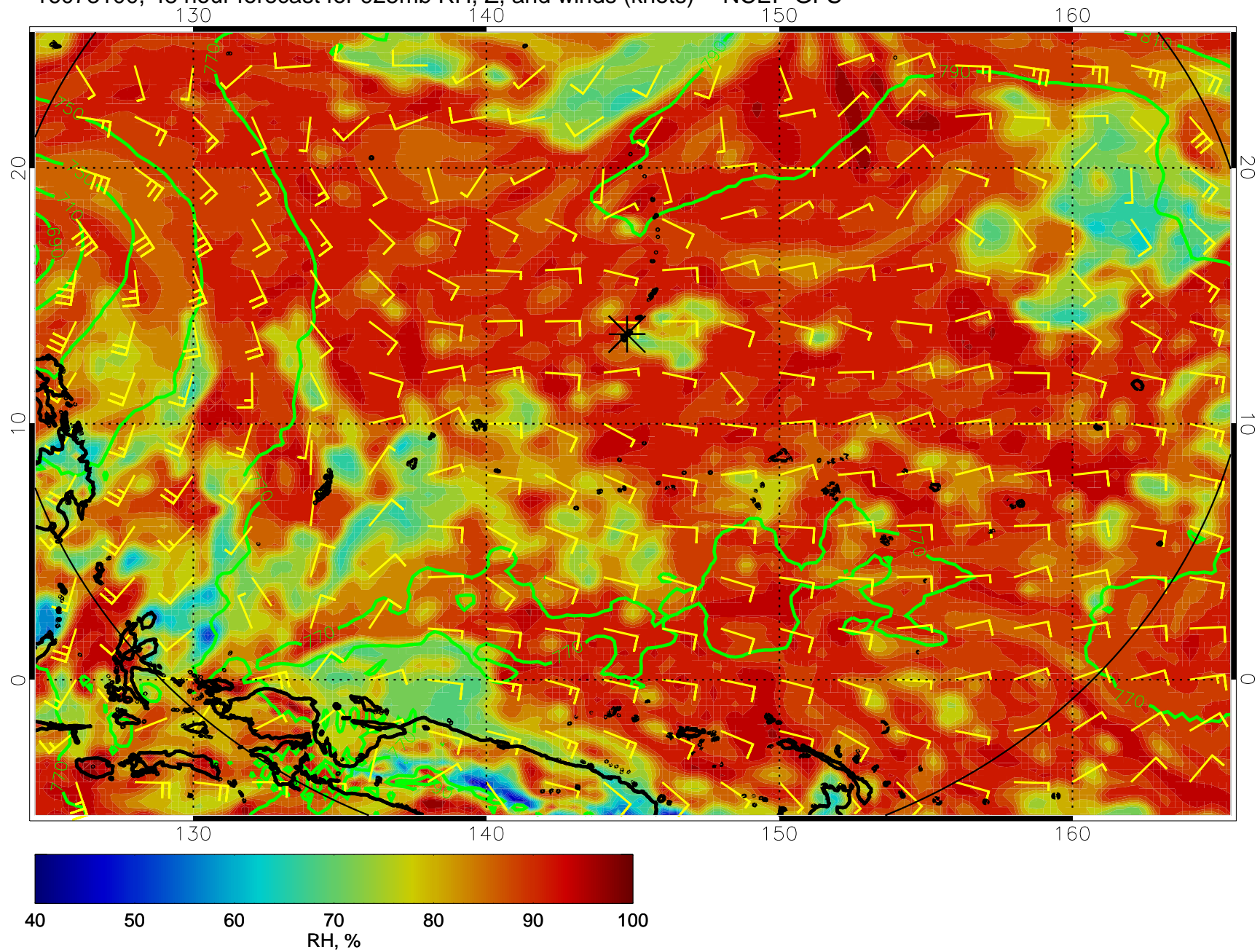
16073012, 36 hour forecast for 925mb RH, Z, and winds (knots) -- NCEP GFS



16073018, 42 hour forecast for 925mb RH, Z, and winds (knots) -- NCEP GFS

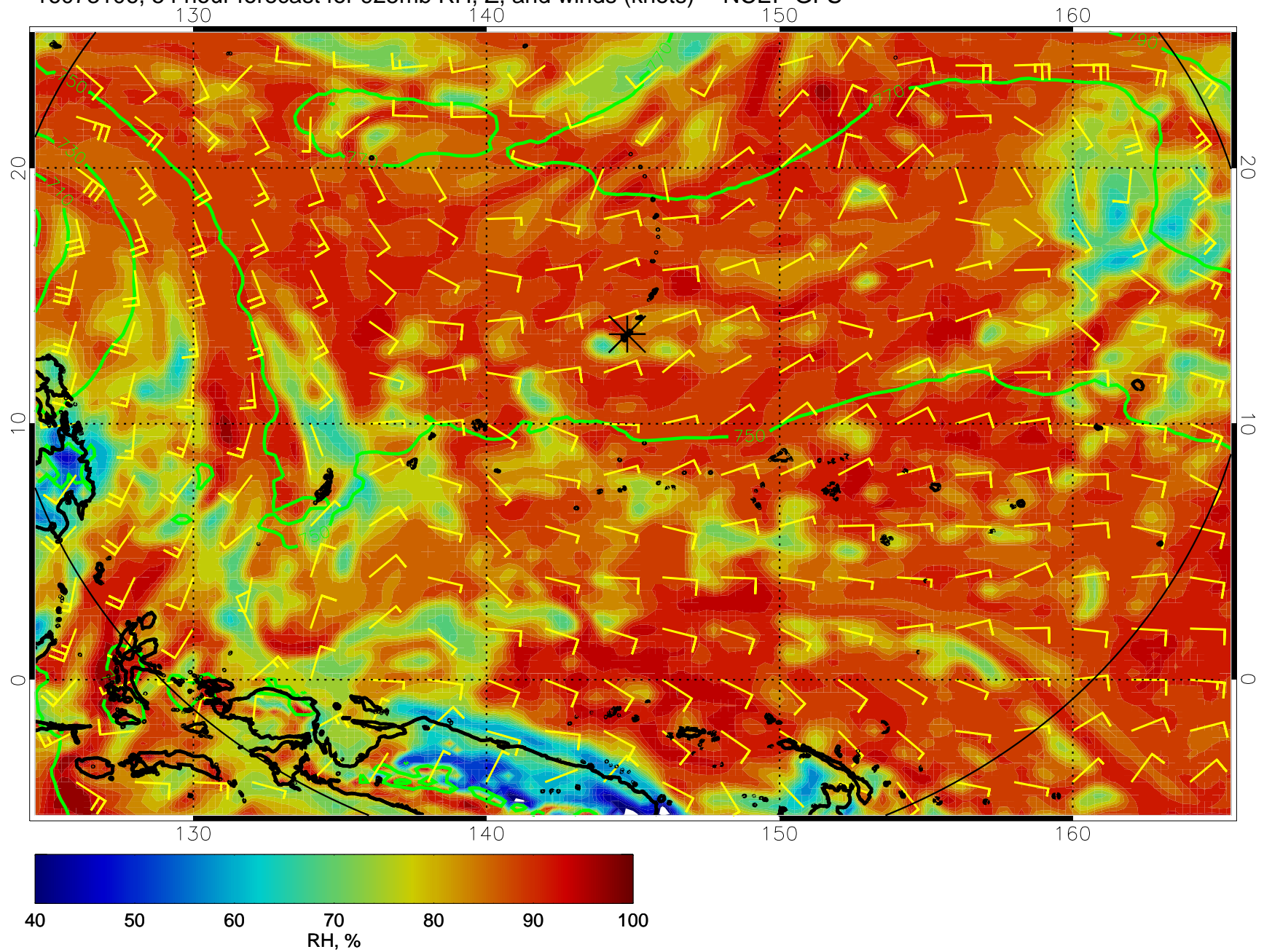


16073100, 48 hour forecast for 925mb RH, Z, and winds (knots) -- NCEP GFS

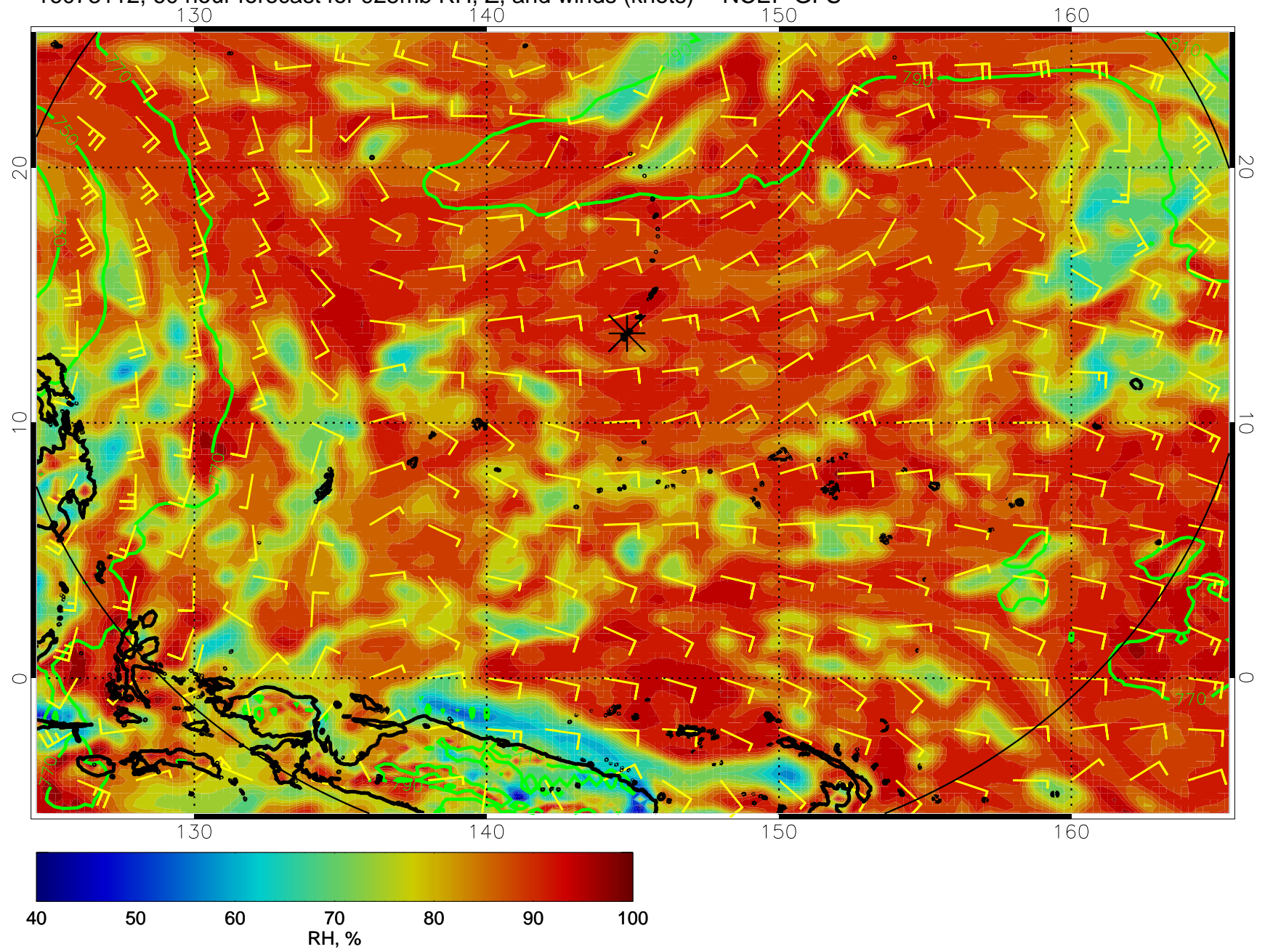




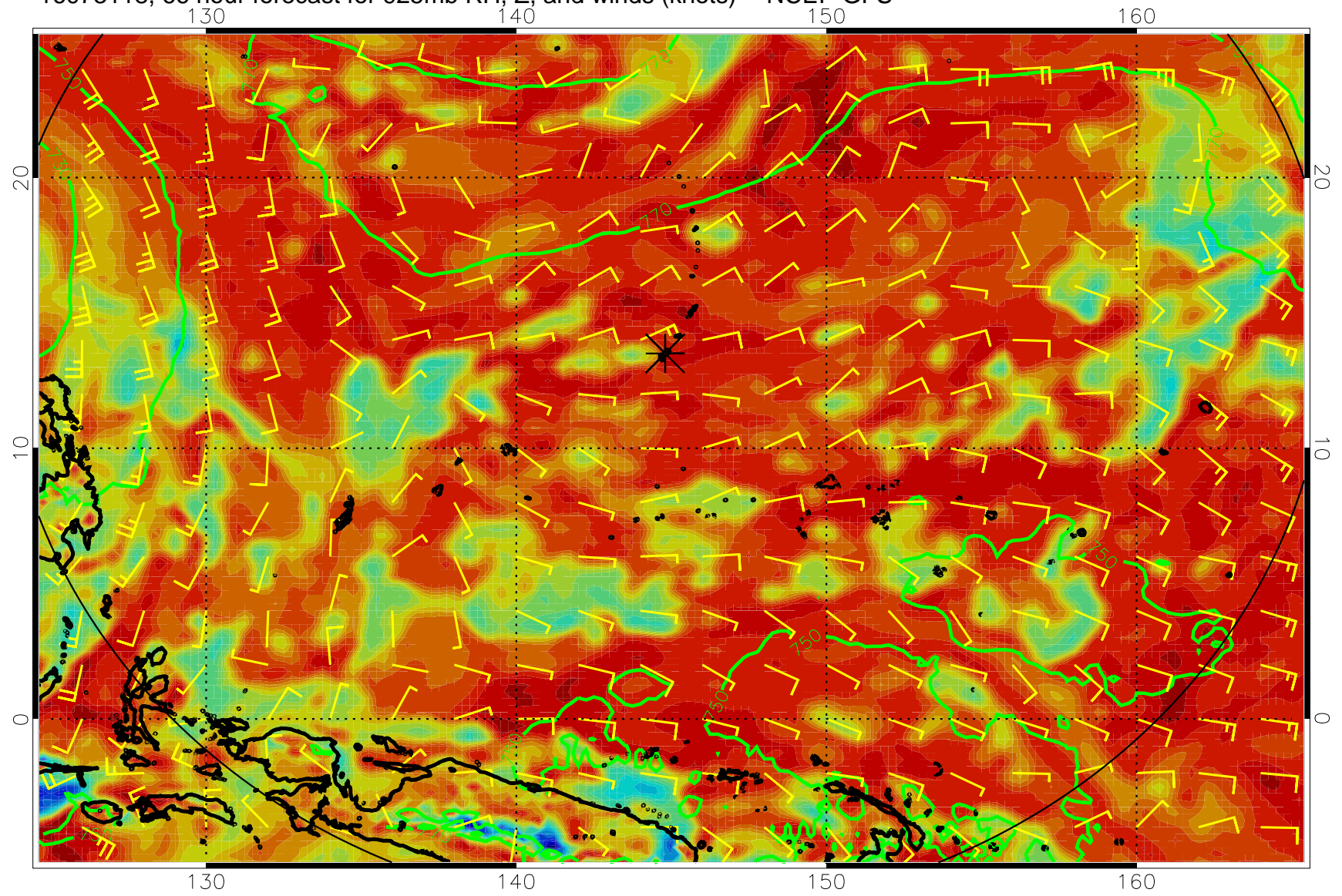
16073106, 54 hour forecast for 925mb RH, Z, and winds (knots) -- NCEP GFS



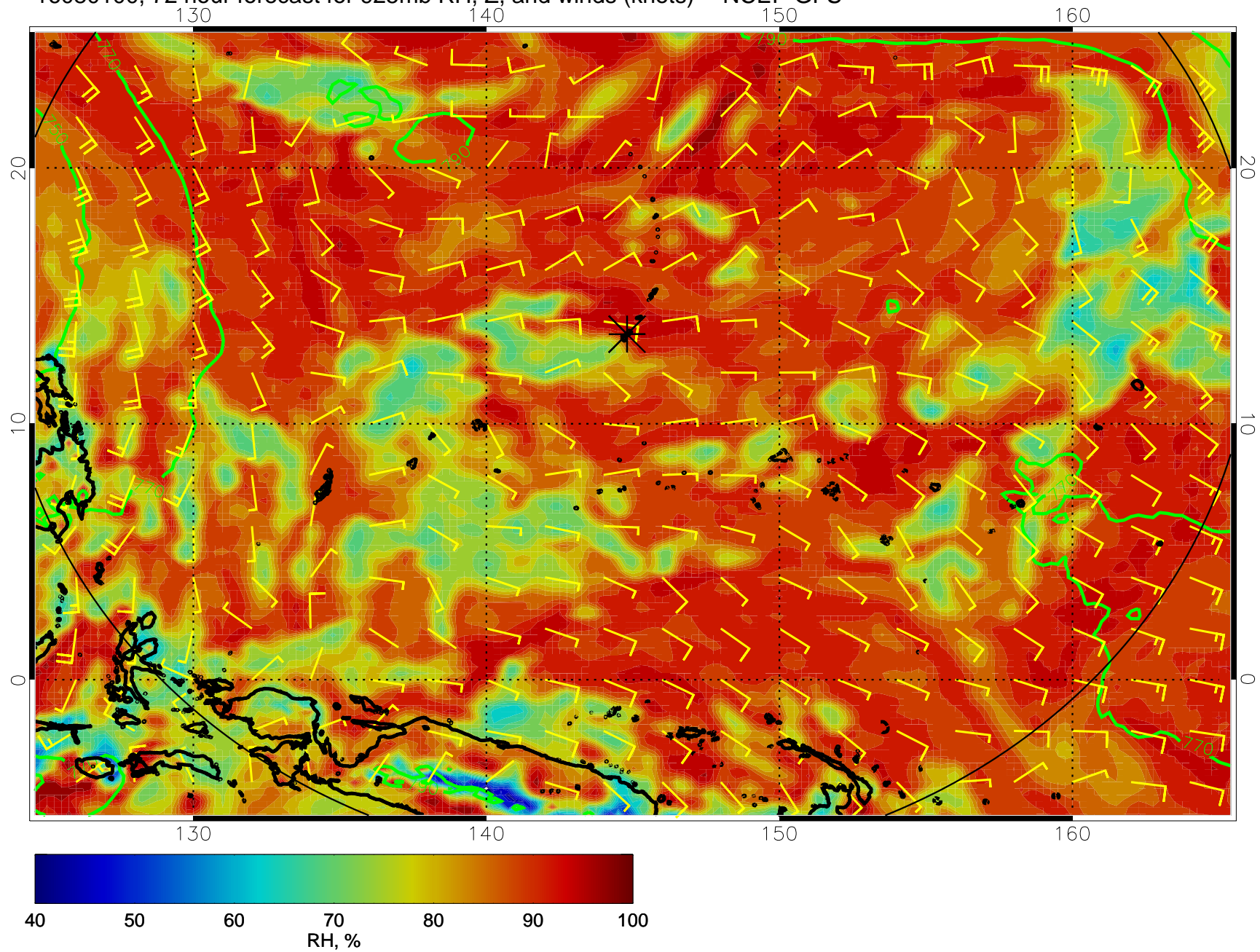
16073112, 60 hour forecast for 925mb RH, Z, and winds (knots) -- NCEP GFS



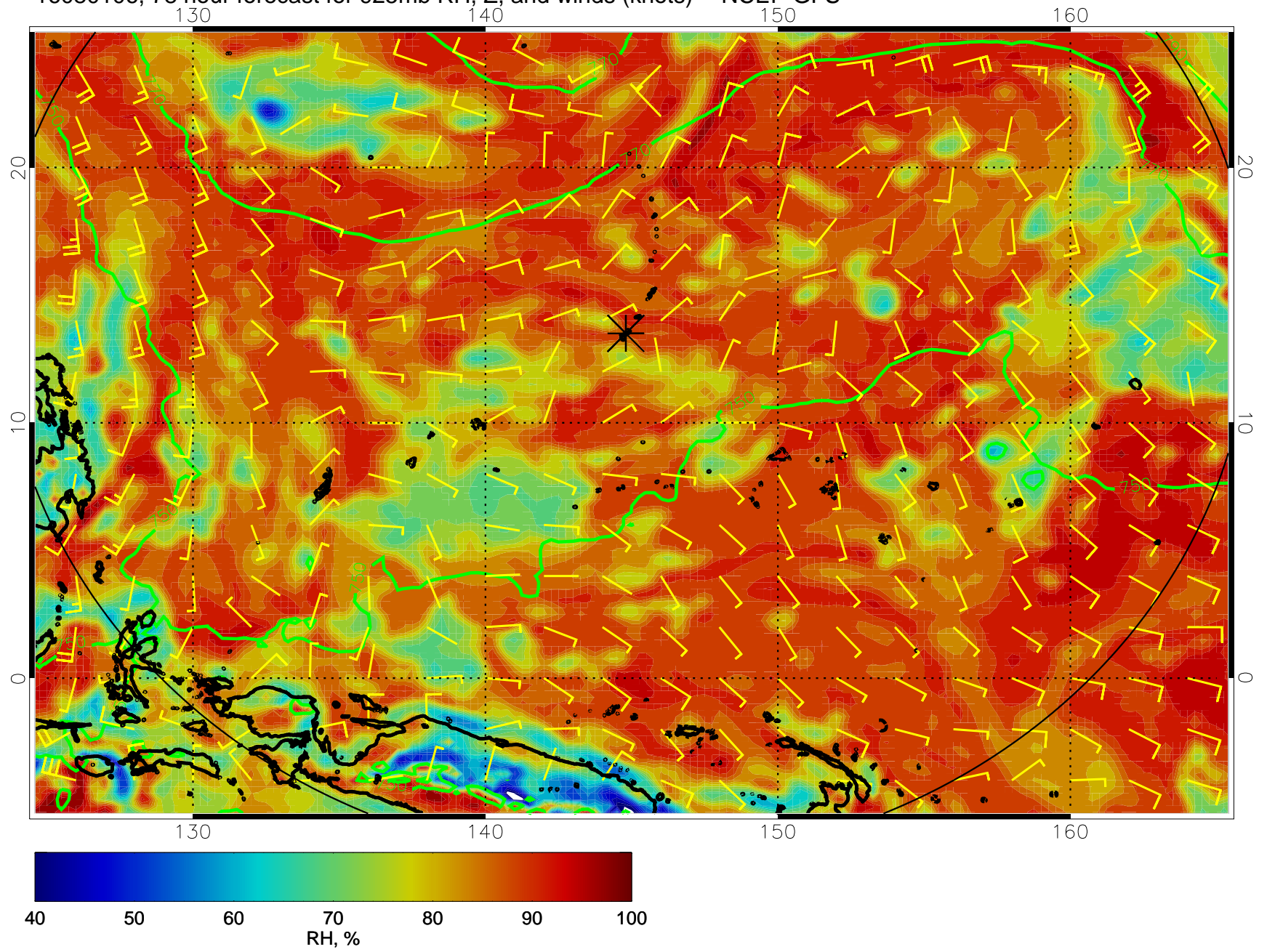
16073118, 66 hour forecast for 925mb RH, Z, and winds (knots) -- NCEP GFS



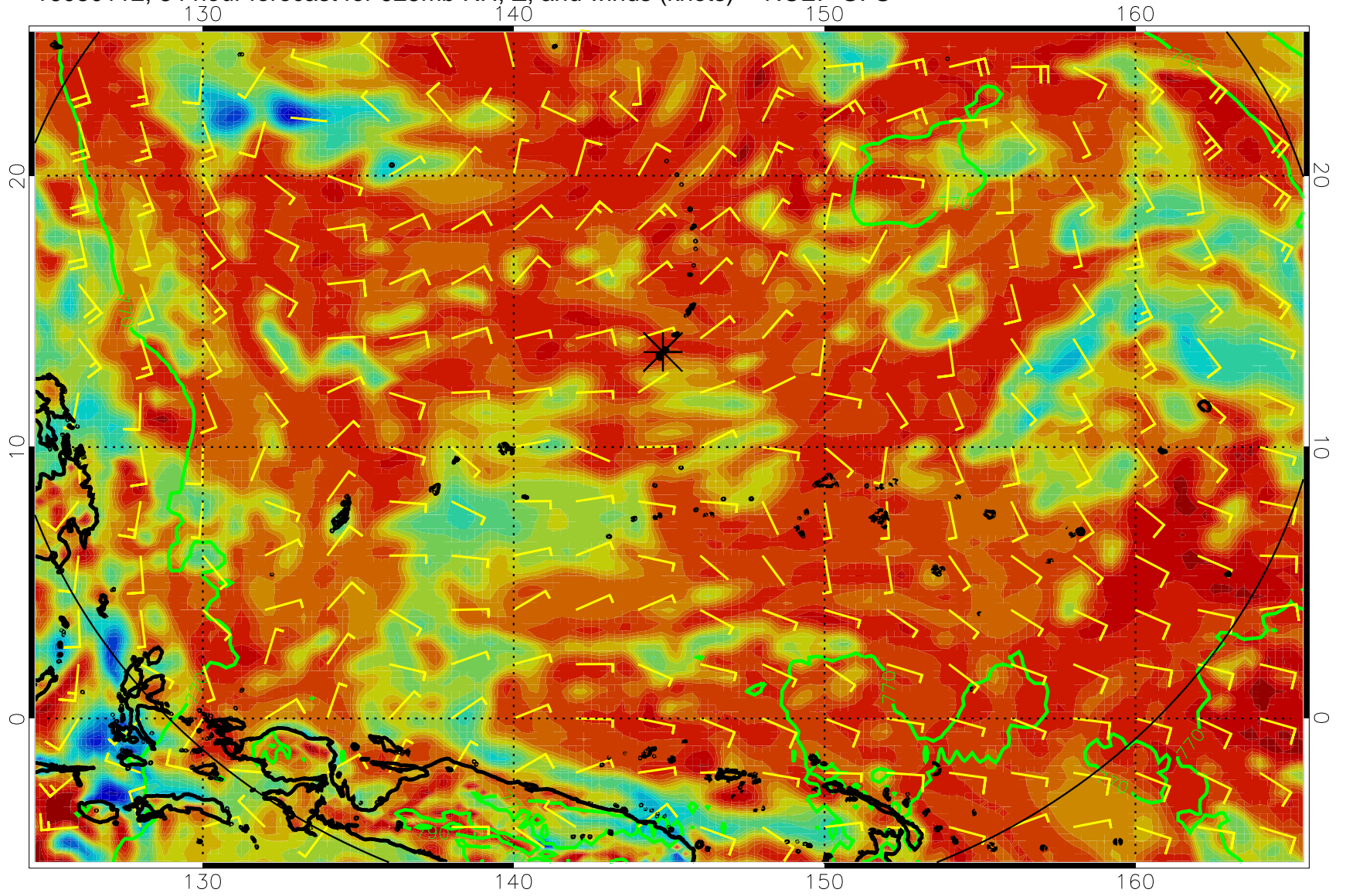
16080100, 72 hour forecast for 925mb RH, Z, and winds (knots) -- NCEP GFS



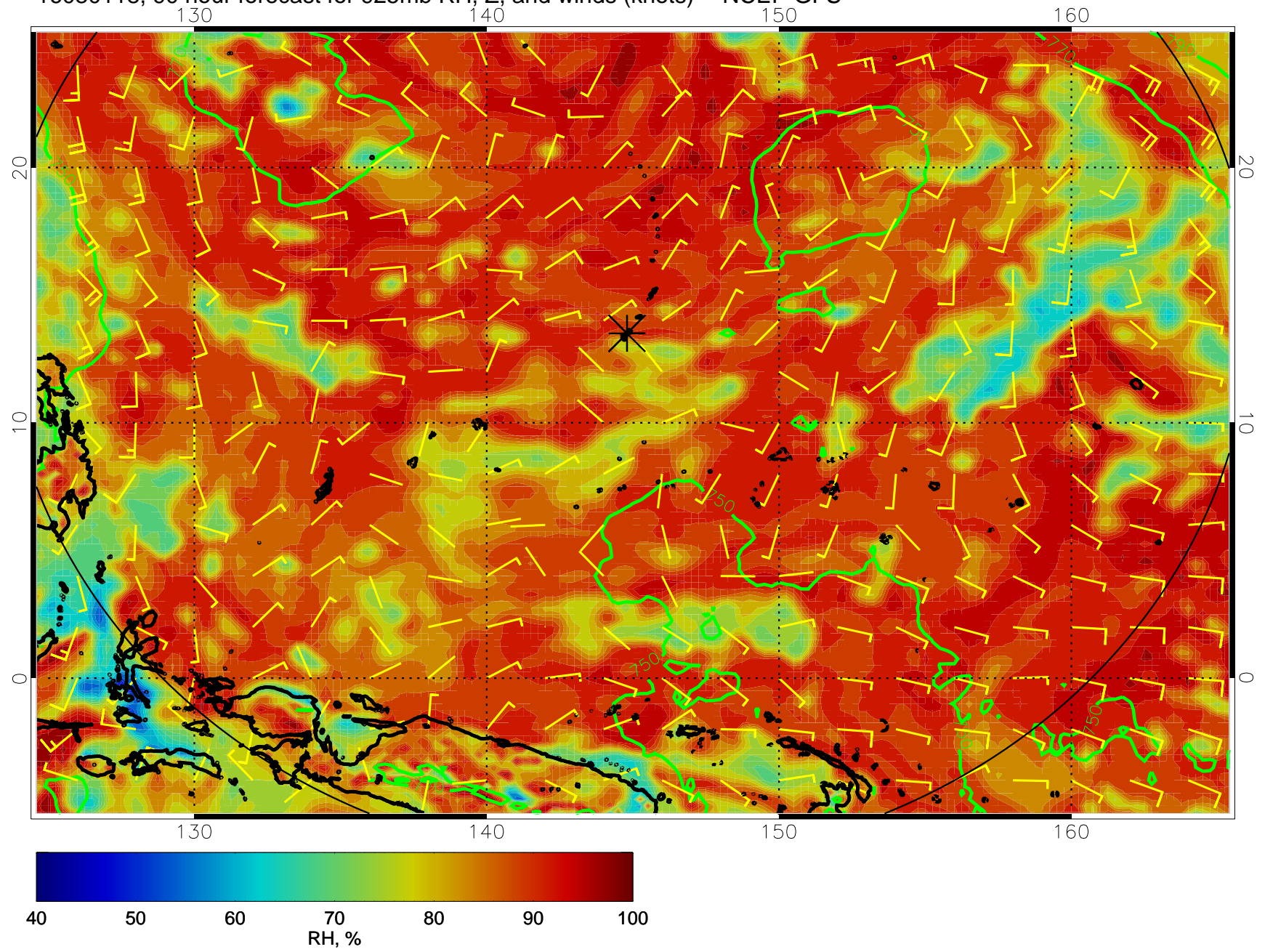
16080106, 78 hour forecast for 925mb RH, Z, and winds (knots) -- NCEP GFS



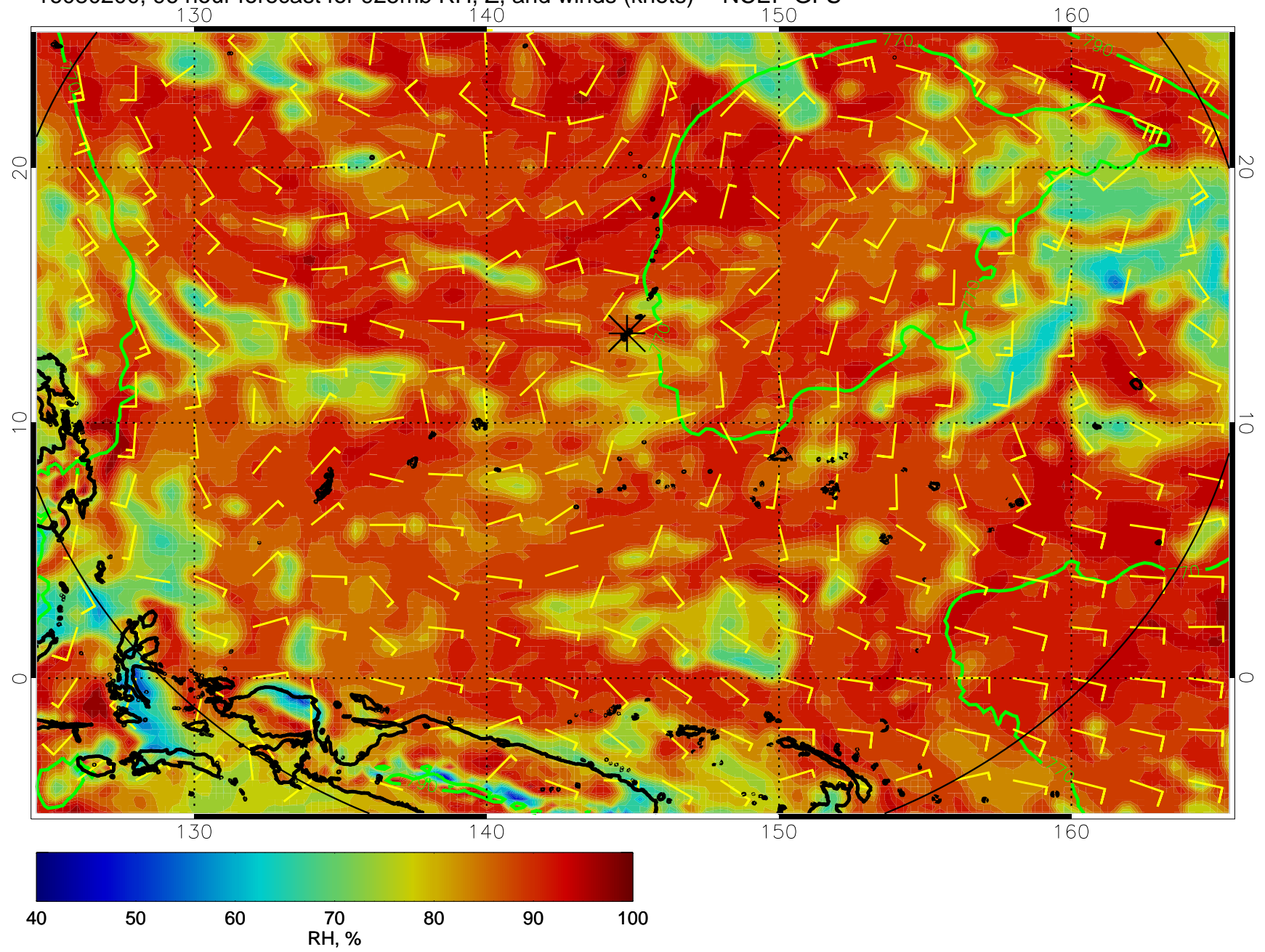
16080112, 84 hour forecast for 925mb RH, Z, and winds (knots) -- NCEP GFS



16080118, 90 hour forecast for 925mb RH, Z, and winds (knots) -- NCEP GFS

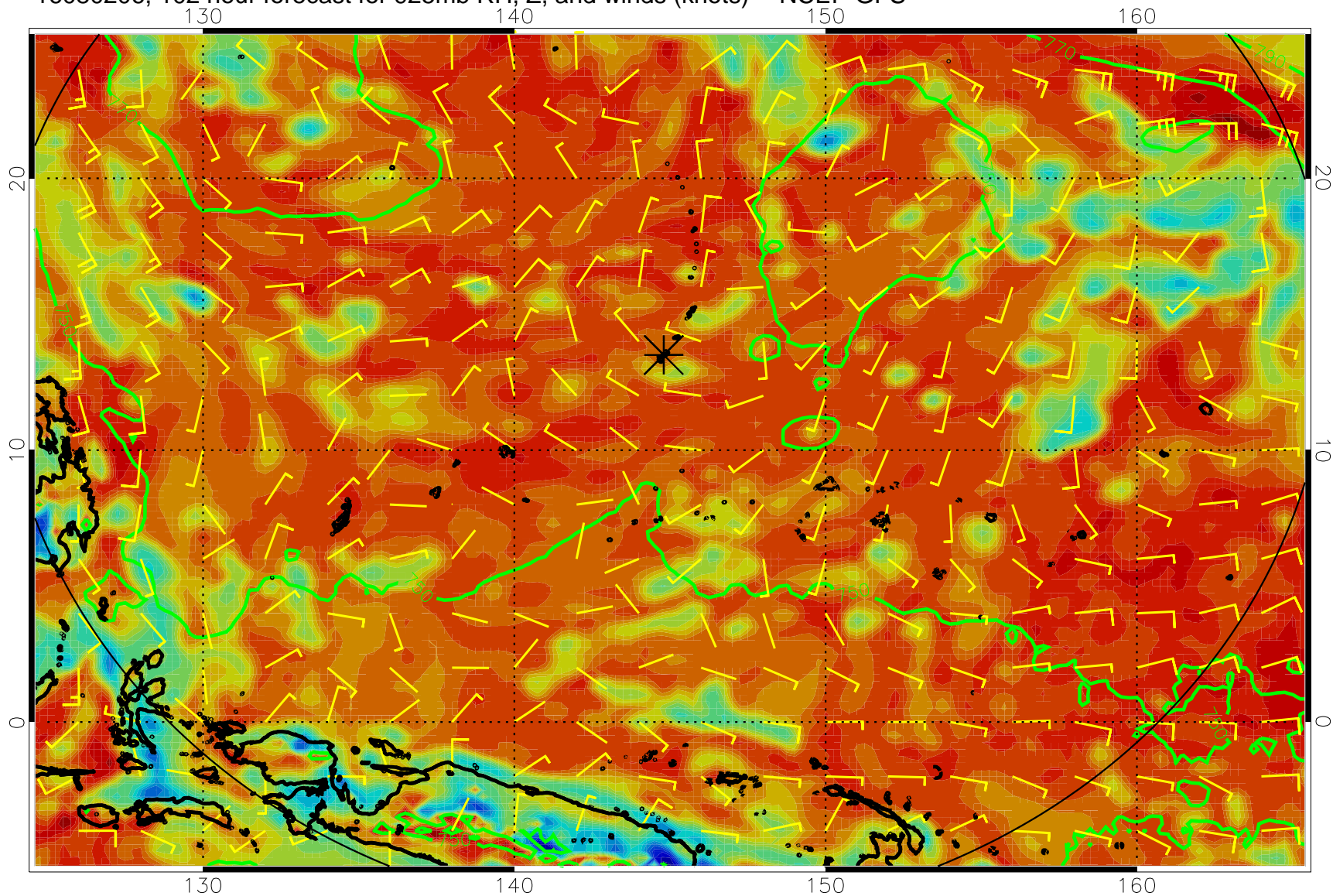


16080200, 96 hour forecast for 925mb RH, Z, and winds (knots) -- NCEP GFS

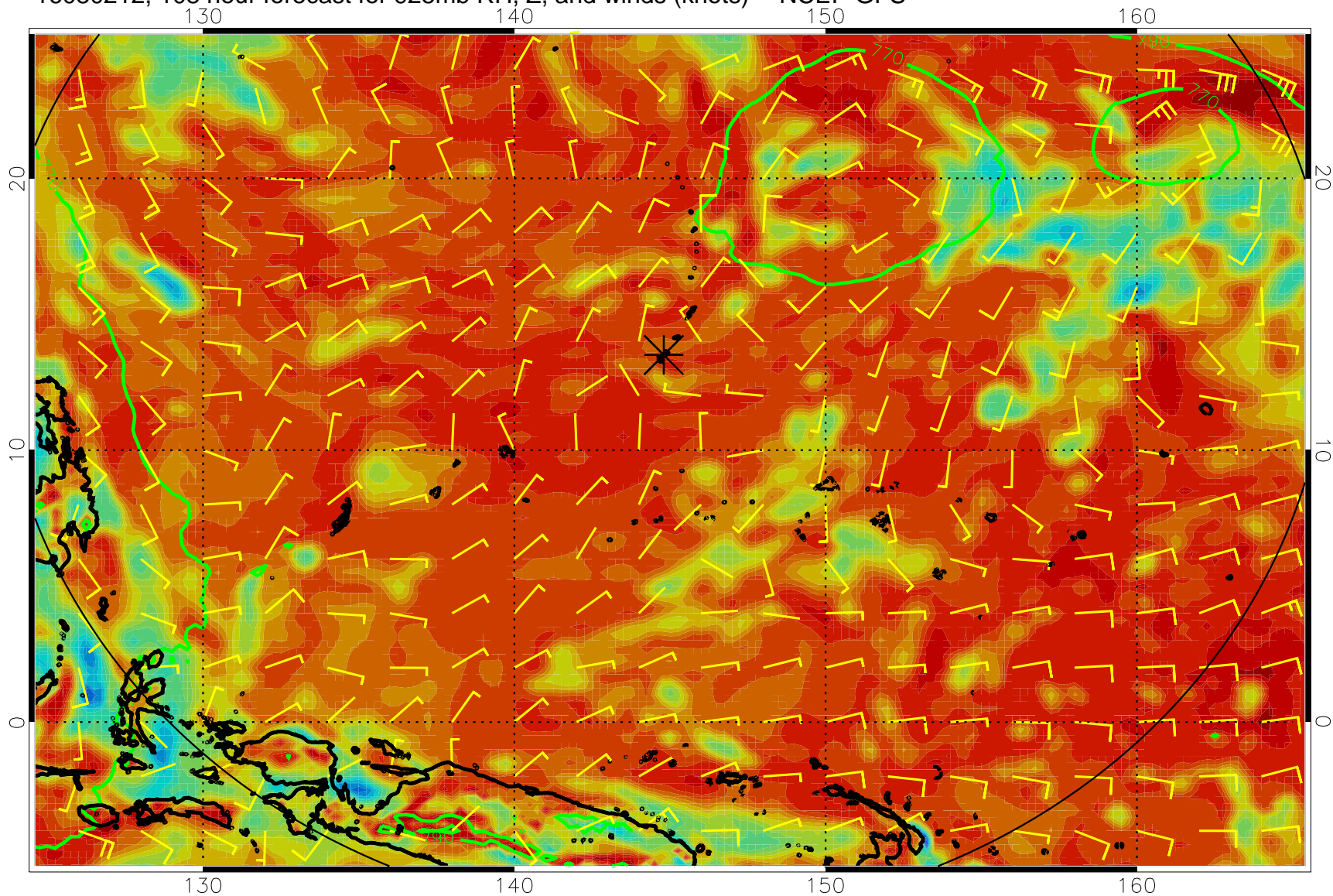




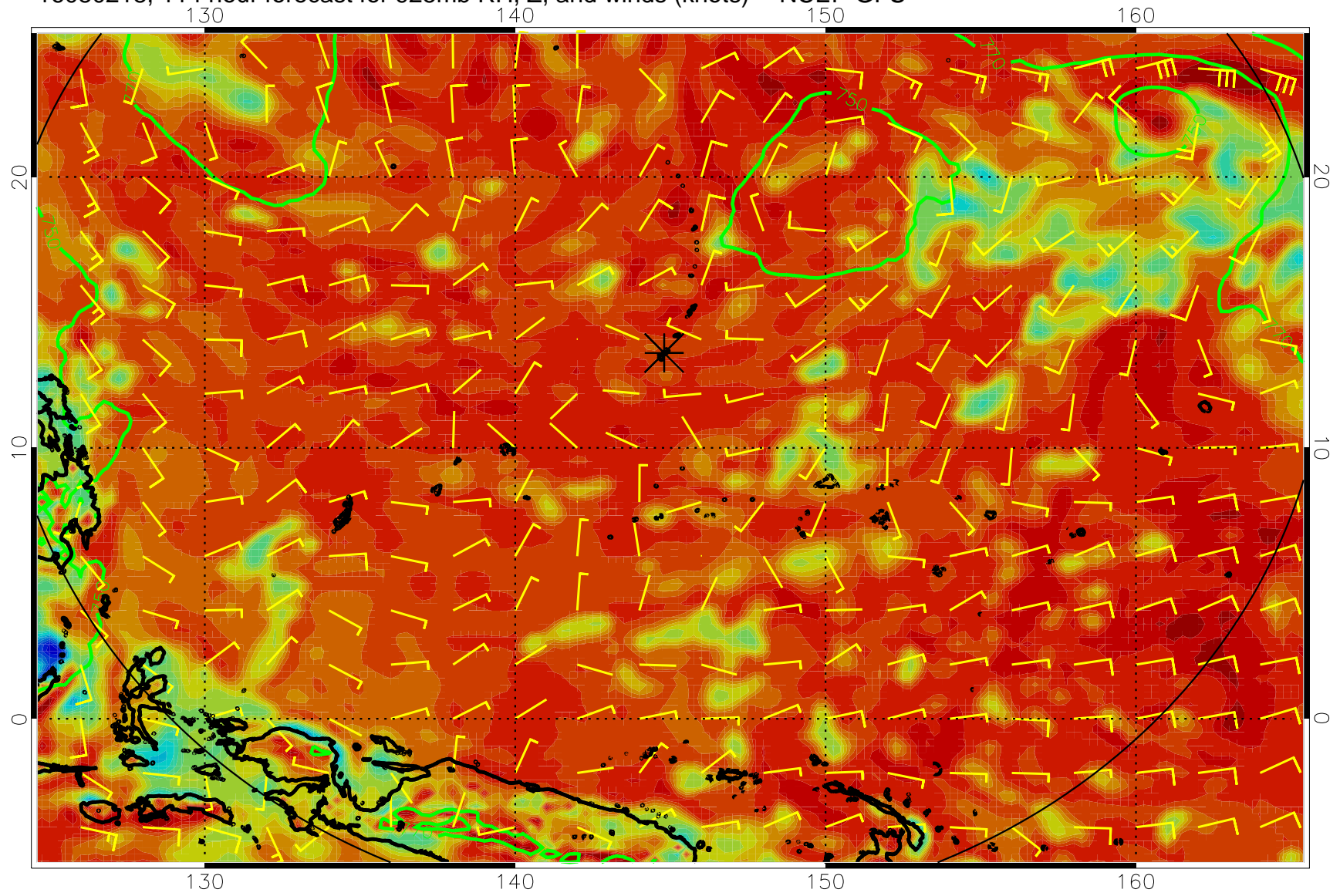
16080206, 102 hour forecast for 925mb RH, Z, and winds (knots) -- NCEP GFS



16080212, 108 hour forecast for 925mb RH, Z, and winds (knots) -- NCEP GFS



16080218, 114 hour forecast for 925mb RH, Z, and winds (knots) -- NCEP GFS



16080300, 120 hour forecast for 925mb RH, Z, and winds (knots) -- NCEP GFS

