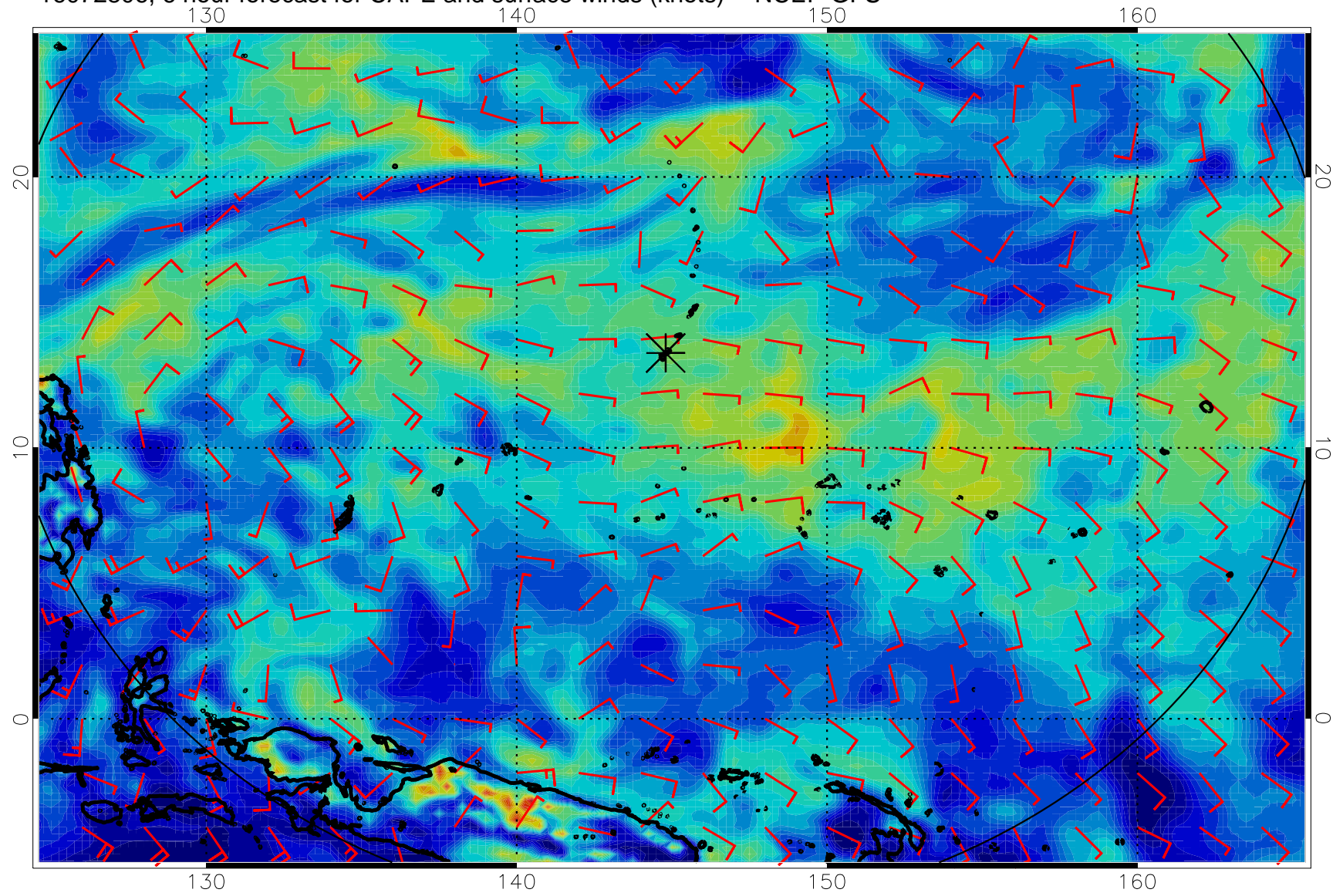
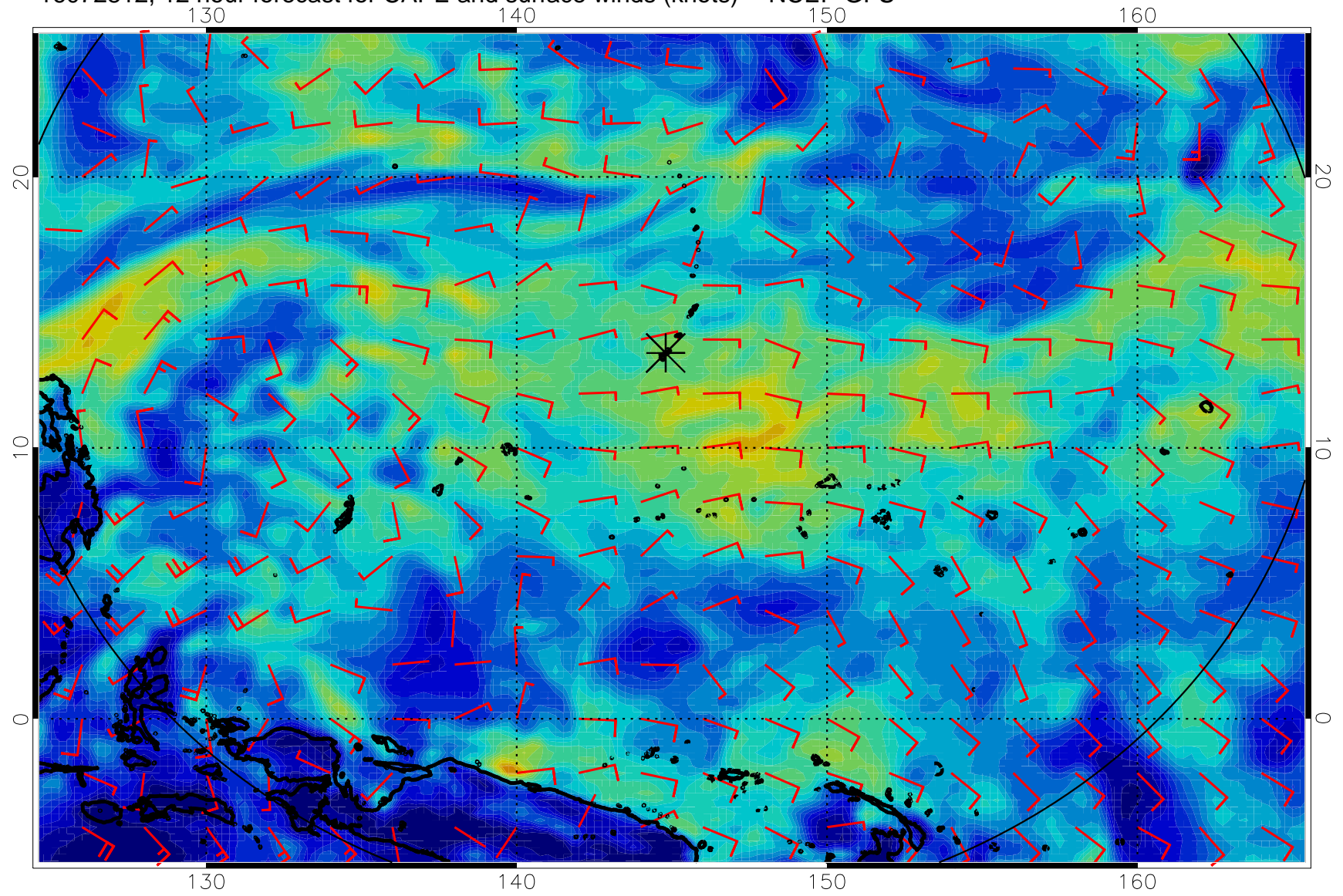


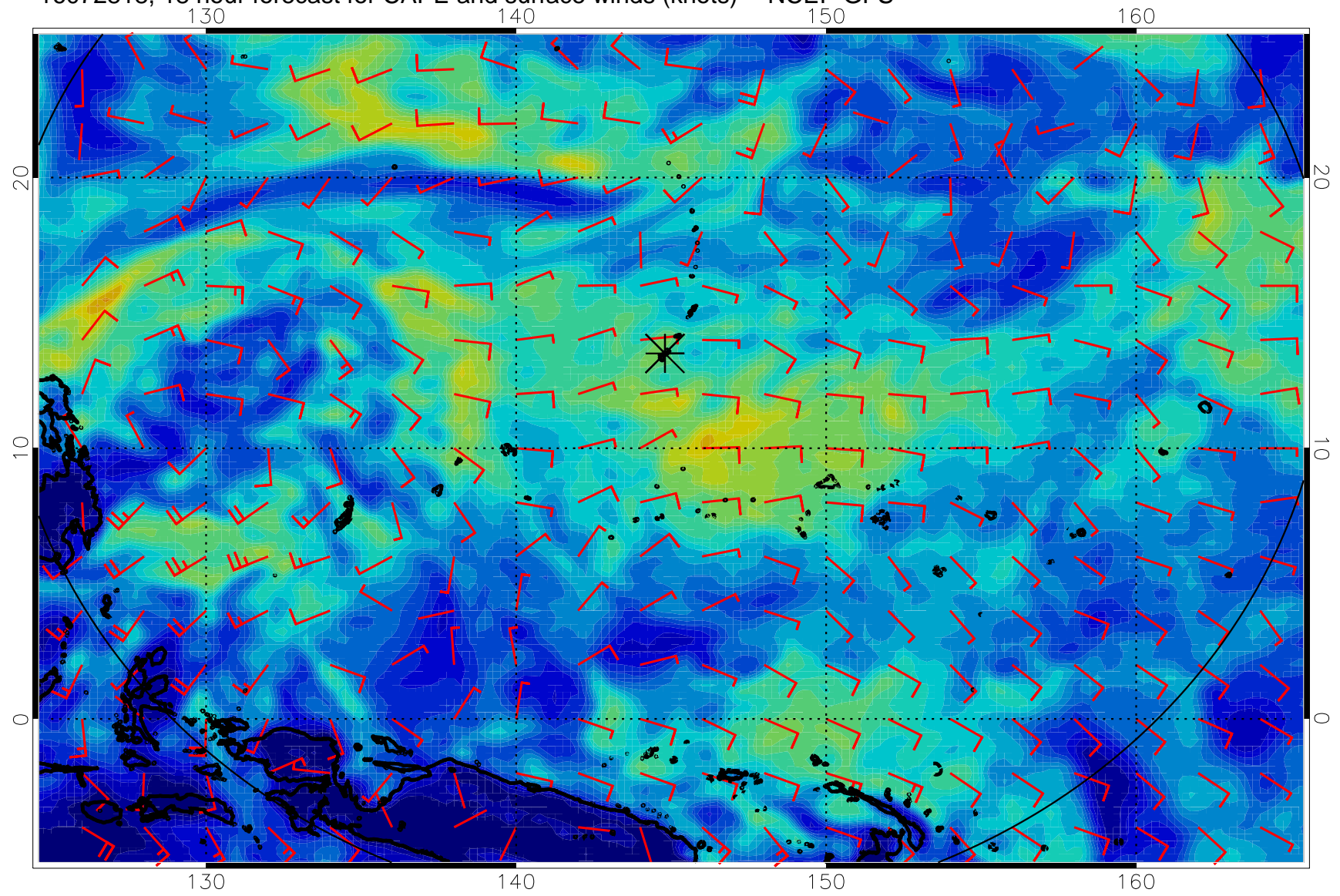
16072806, 6 hour forecast for CAPE and surface winds (knots) -- NCEP GFS



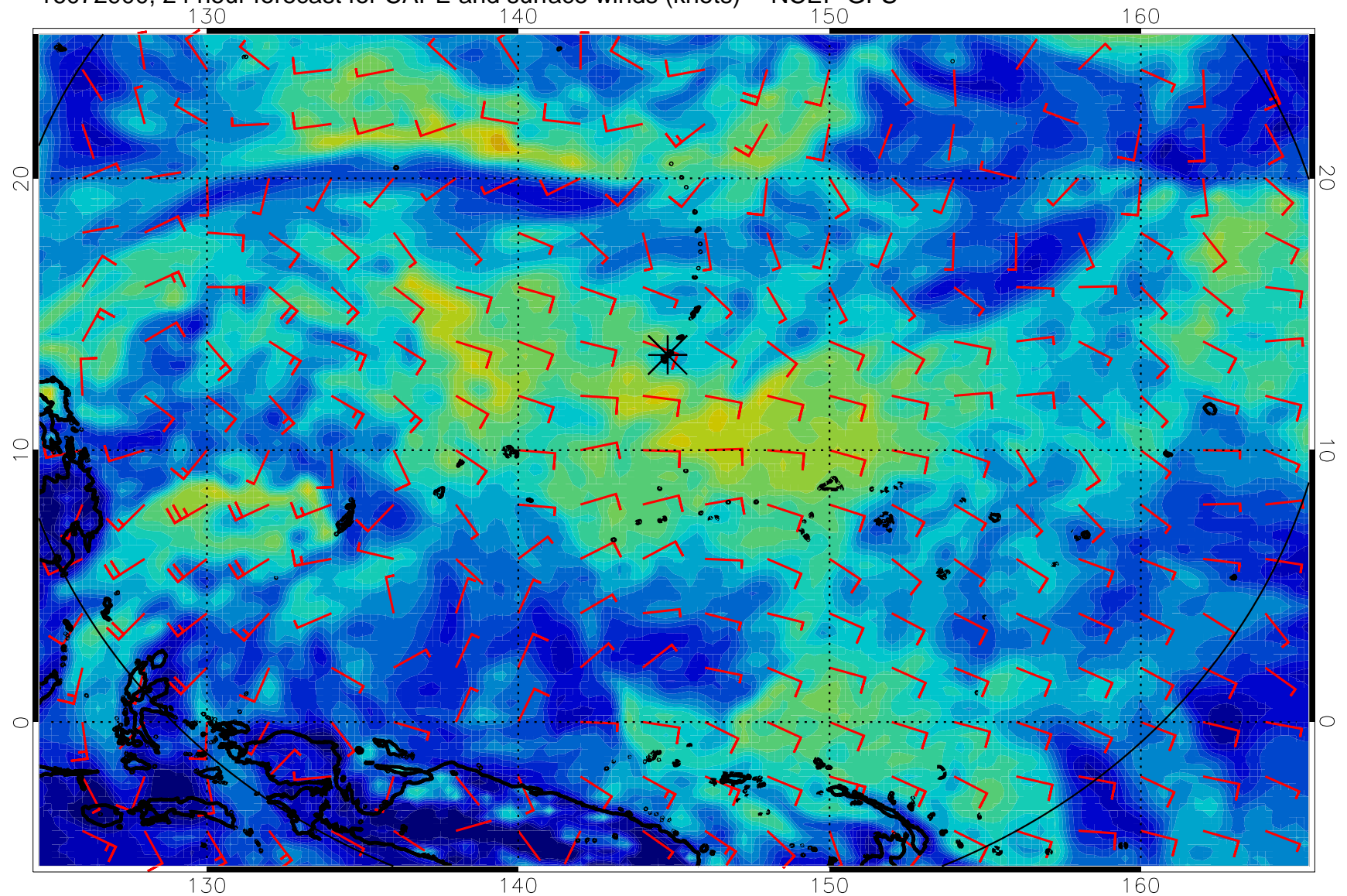
16072812, 12 hour forecast for CAPE and surface winds (knots) -- NCEP GFS



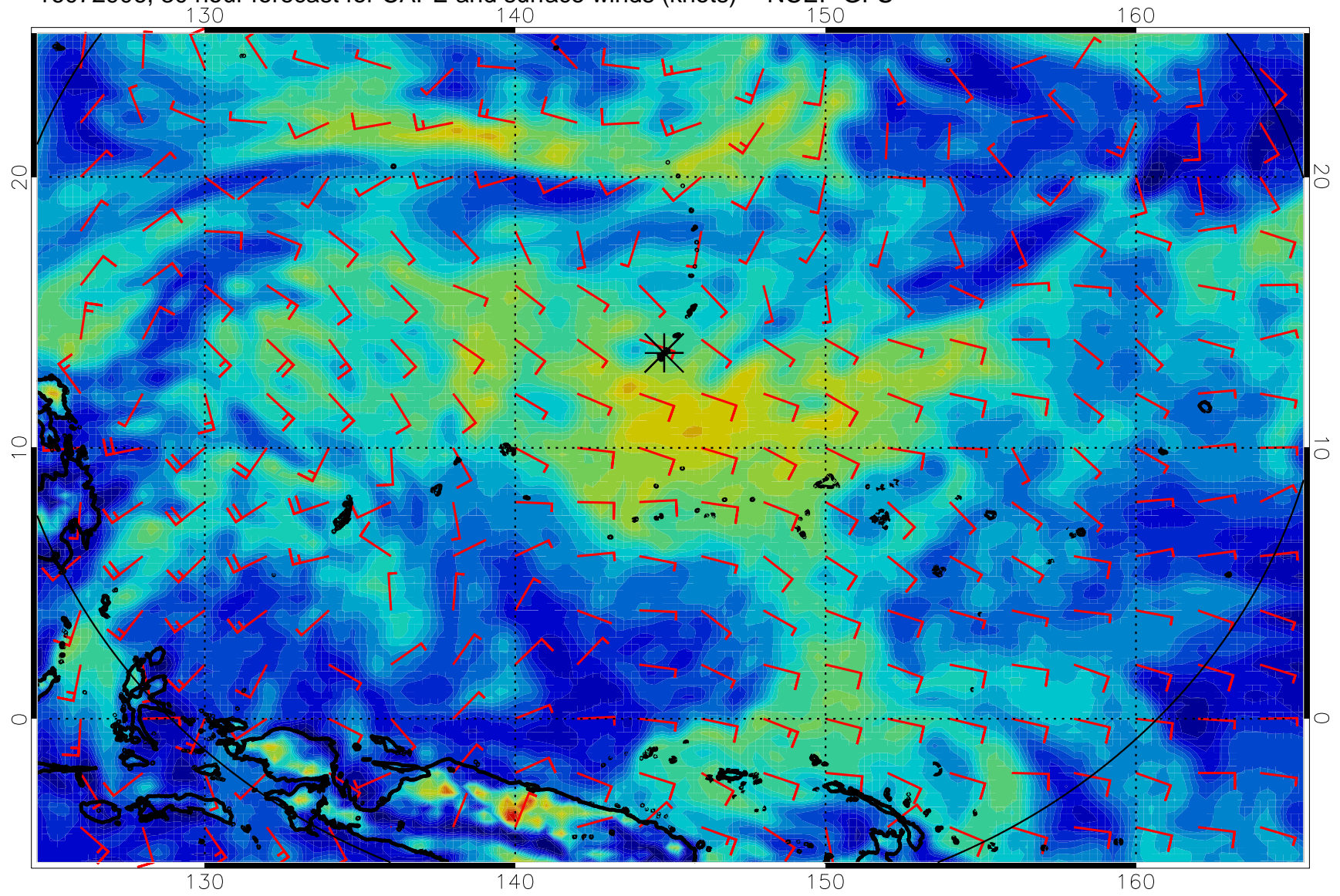
16072818, 18 hour forecast for CAPE and surface winds (knots) -- NCEP GFS



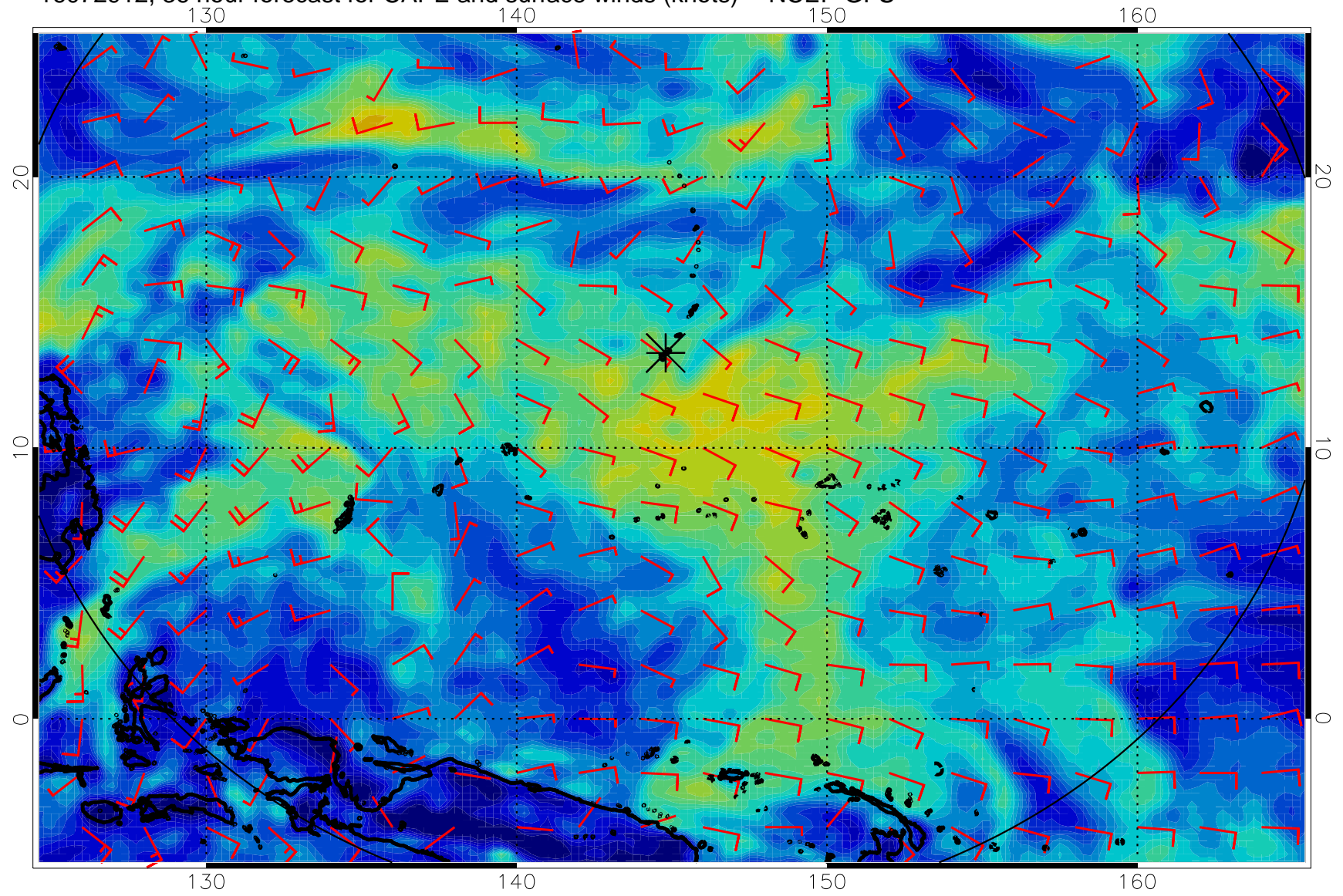
16072900, 24 hour forecast for CAPE and surface winds (knots) -- NCEP GFS



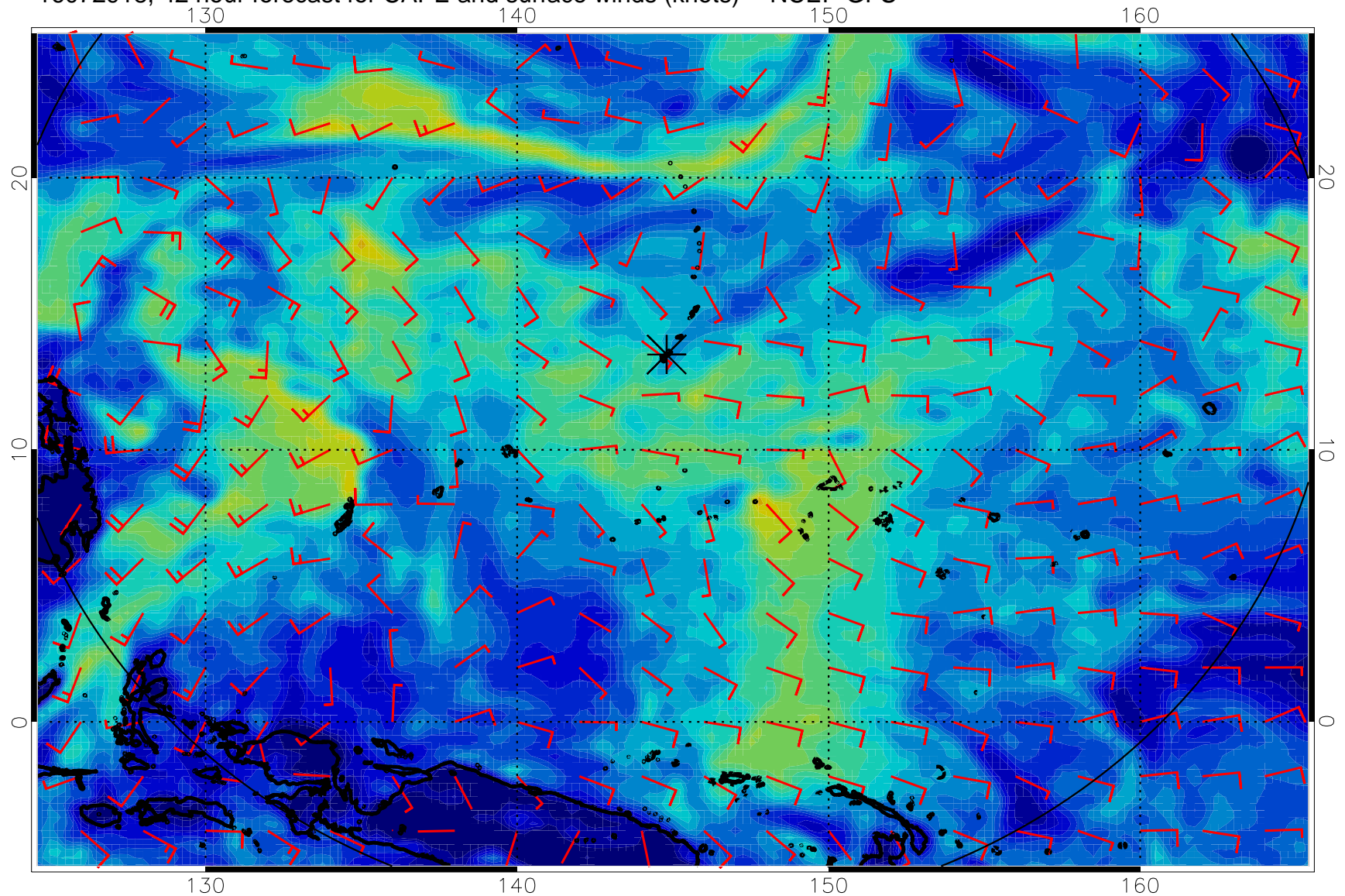
16072906, 30 hour forecast for CAPE and surface winds (knots) -- NCEP GFS



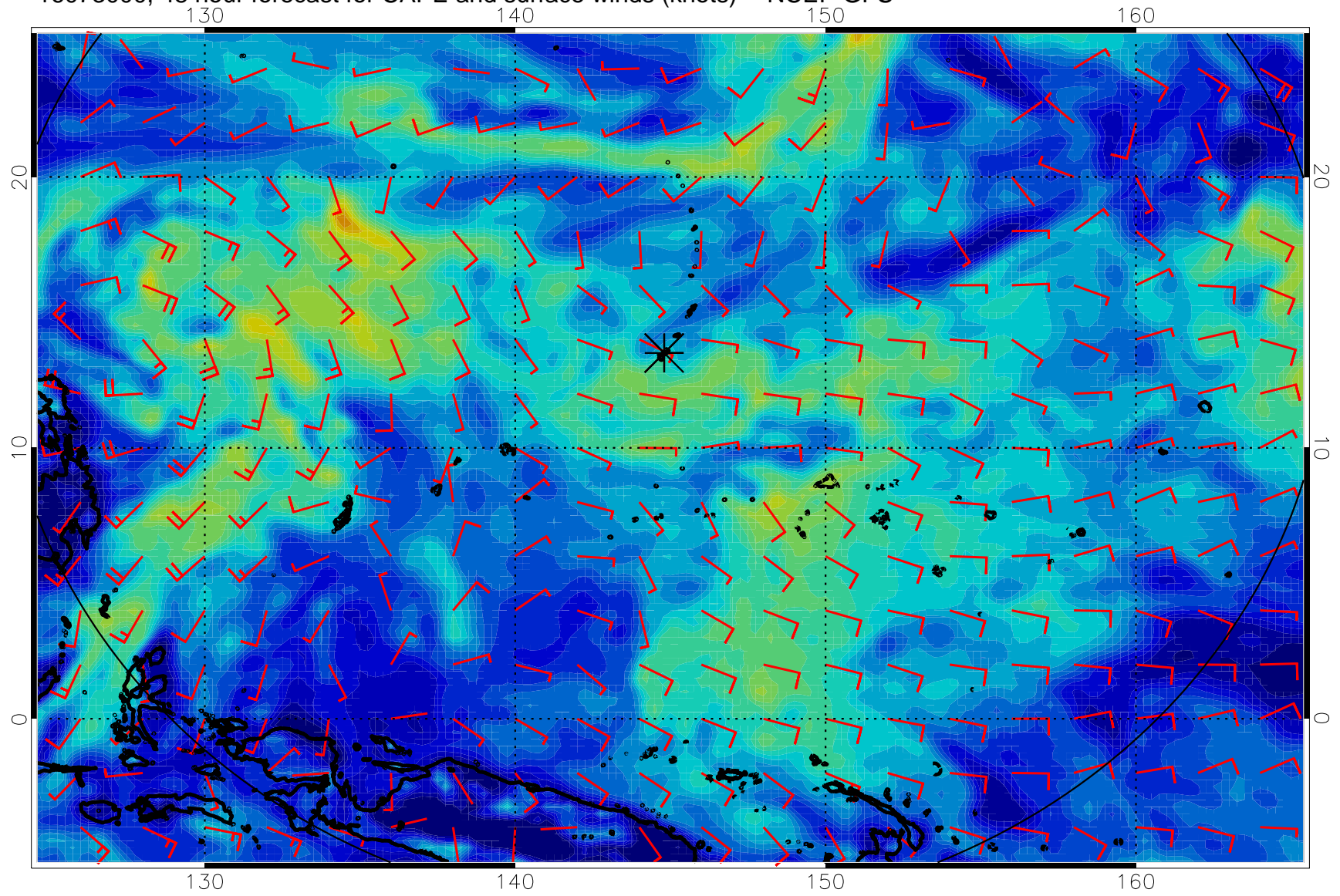
16072912, 36 hour forecast for CAPE and surface winds (knots) -- NCEP GFS



16072918, 42 hour forecast for CAPE and surface winds (knots) -- NCEP GFS

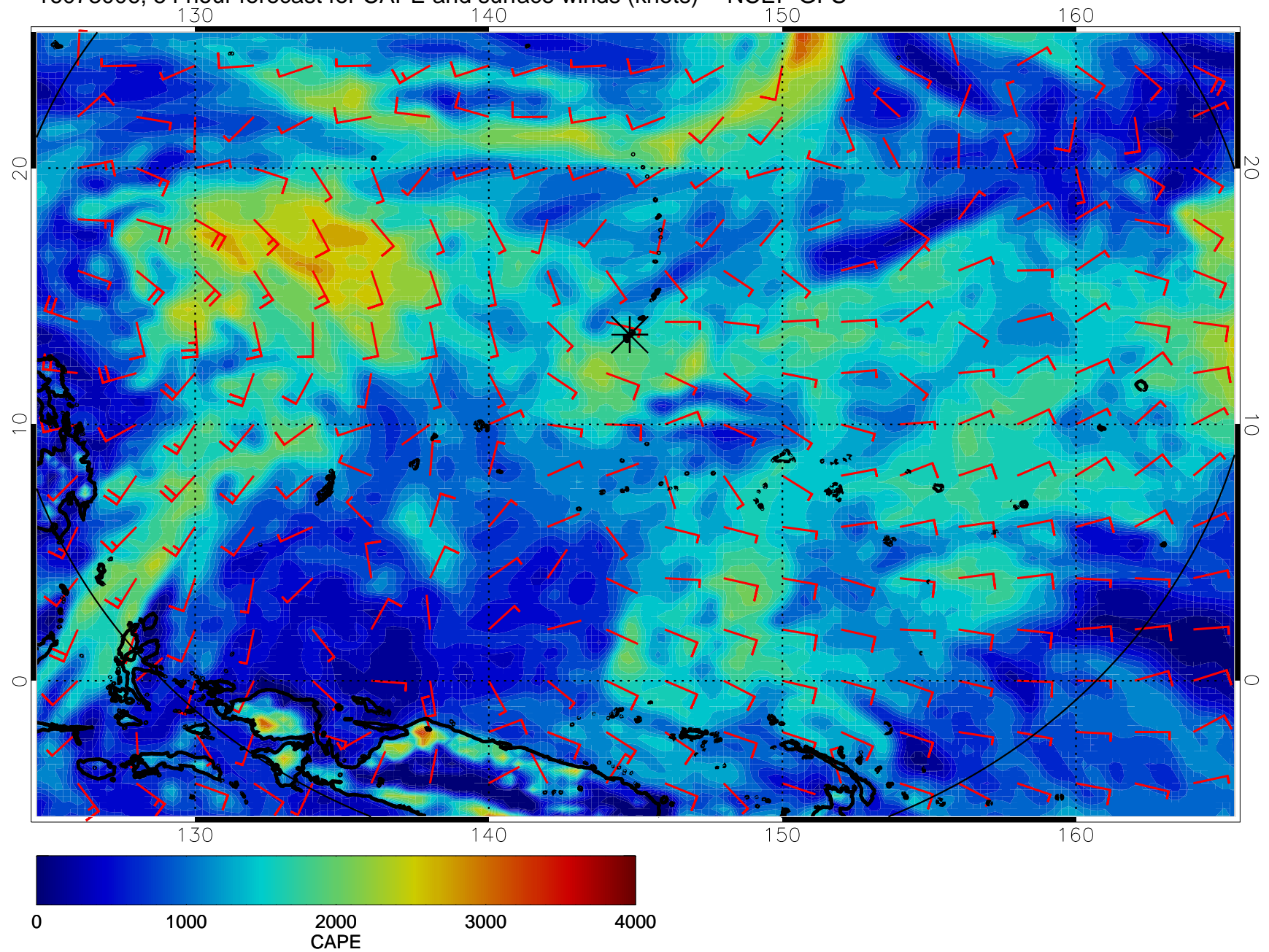


16073000, 48 hour forecast for CAPE and surface winds (knots) -- NCEP GFS

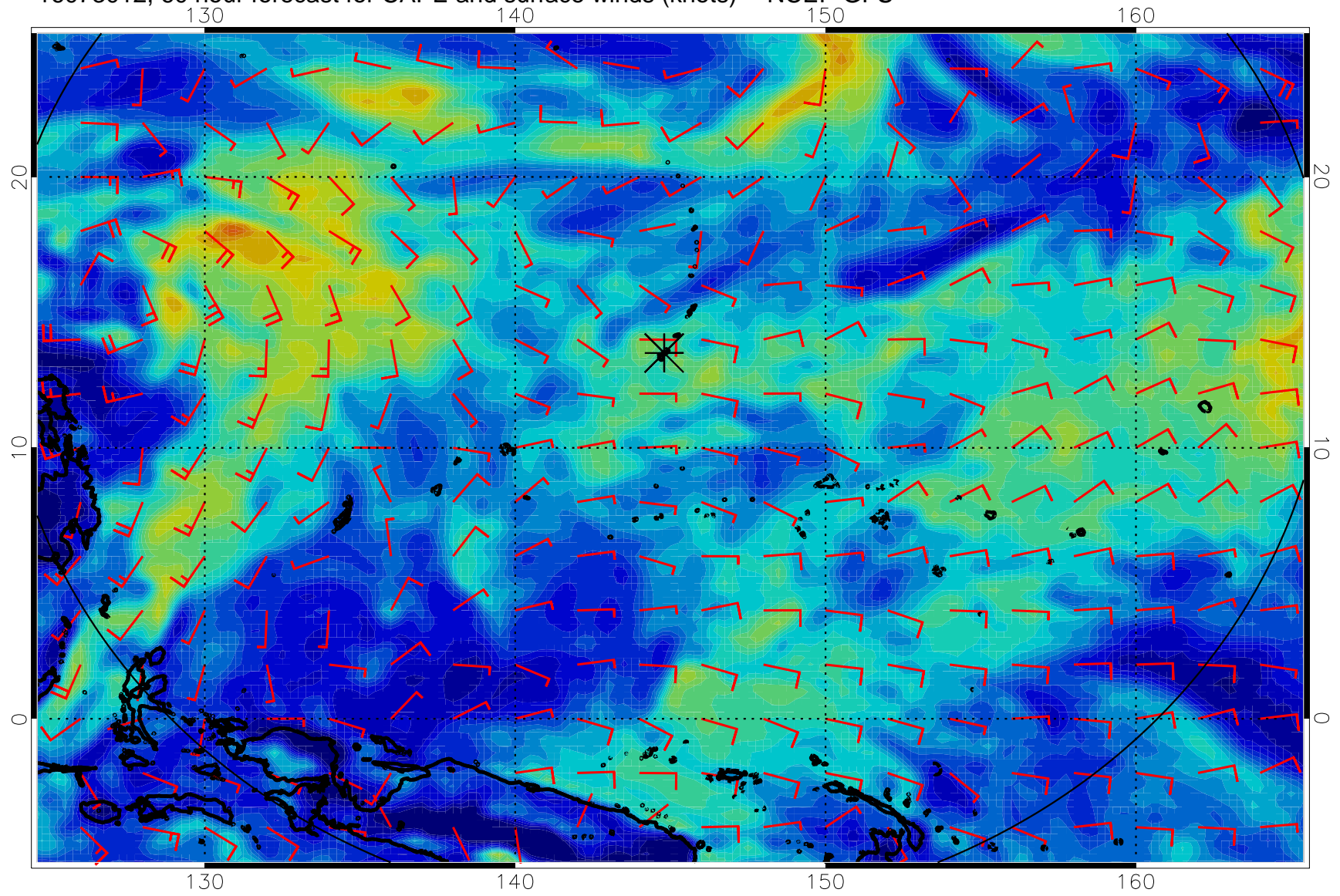




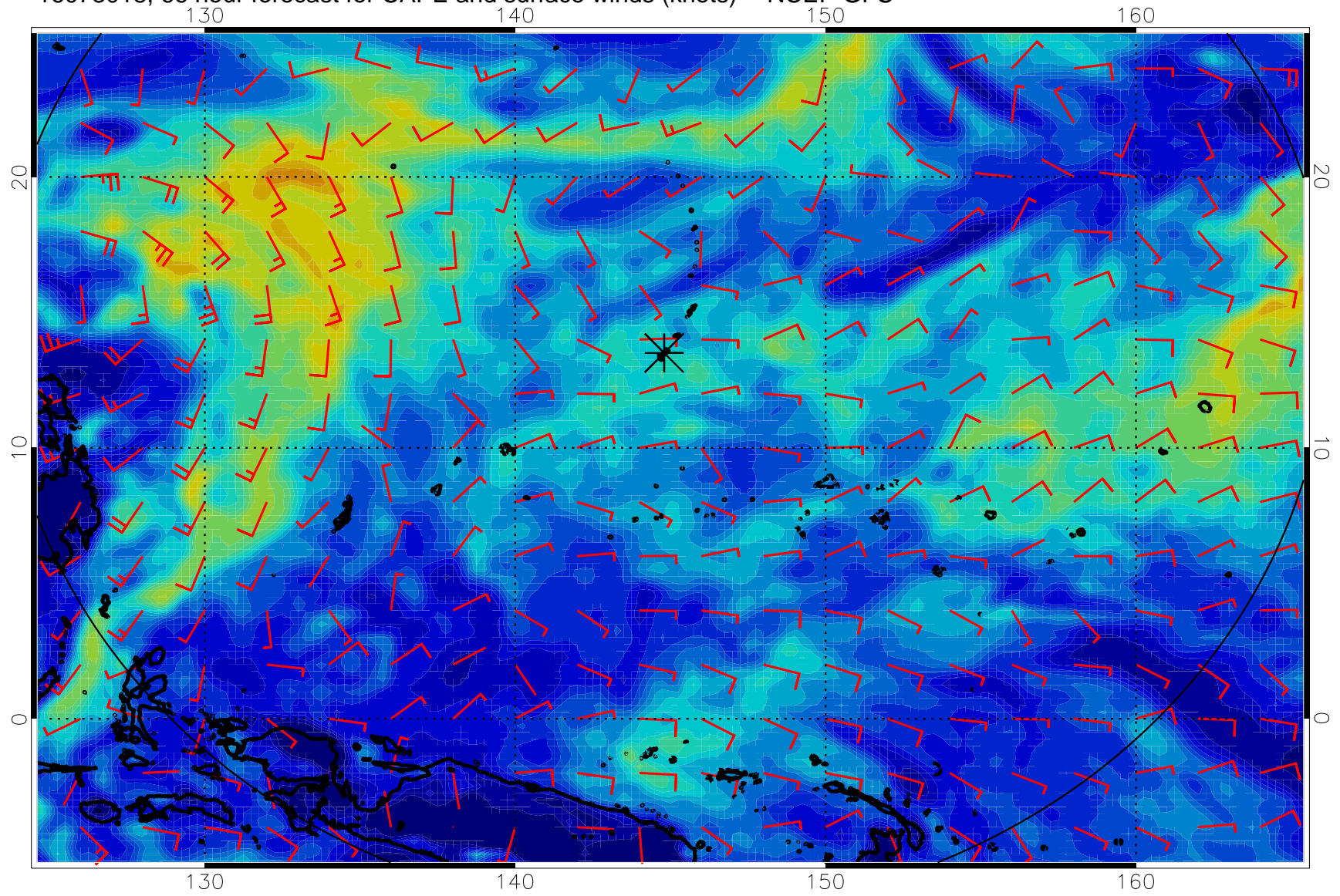
16073006, 54 hour forecast for CAPE and surface winds (knots) -- NCEP GFS



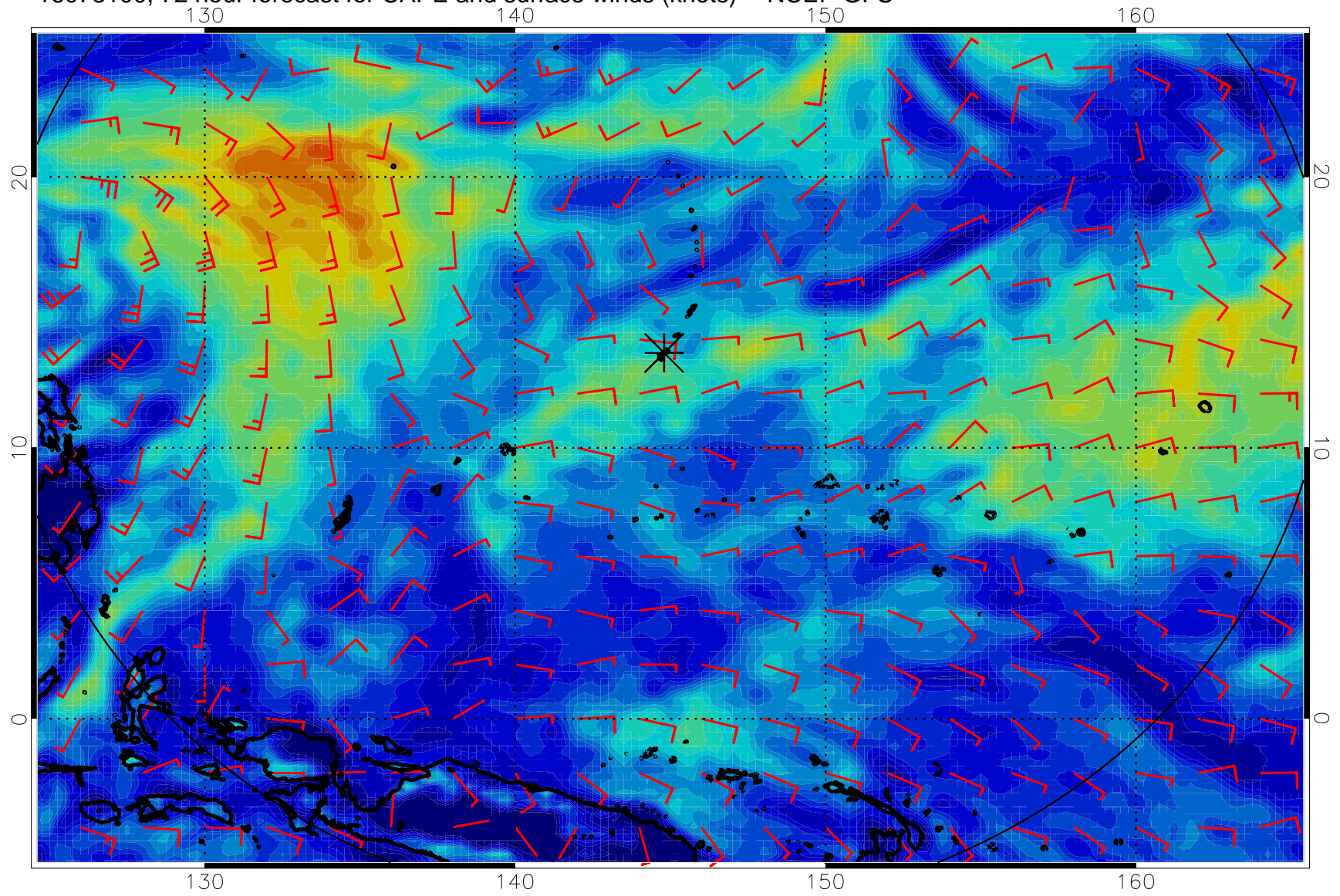
16073012, 60 hour forecast for CAPE and surface winds (knots) -- NCEP GFS



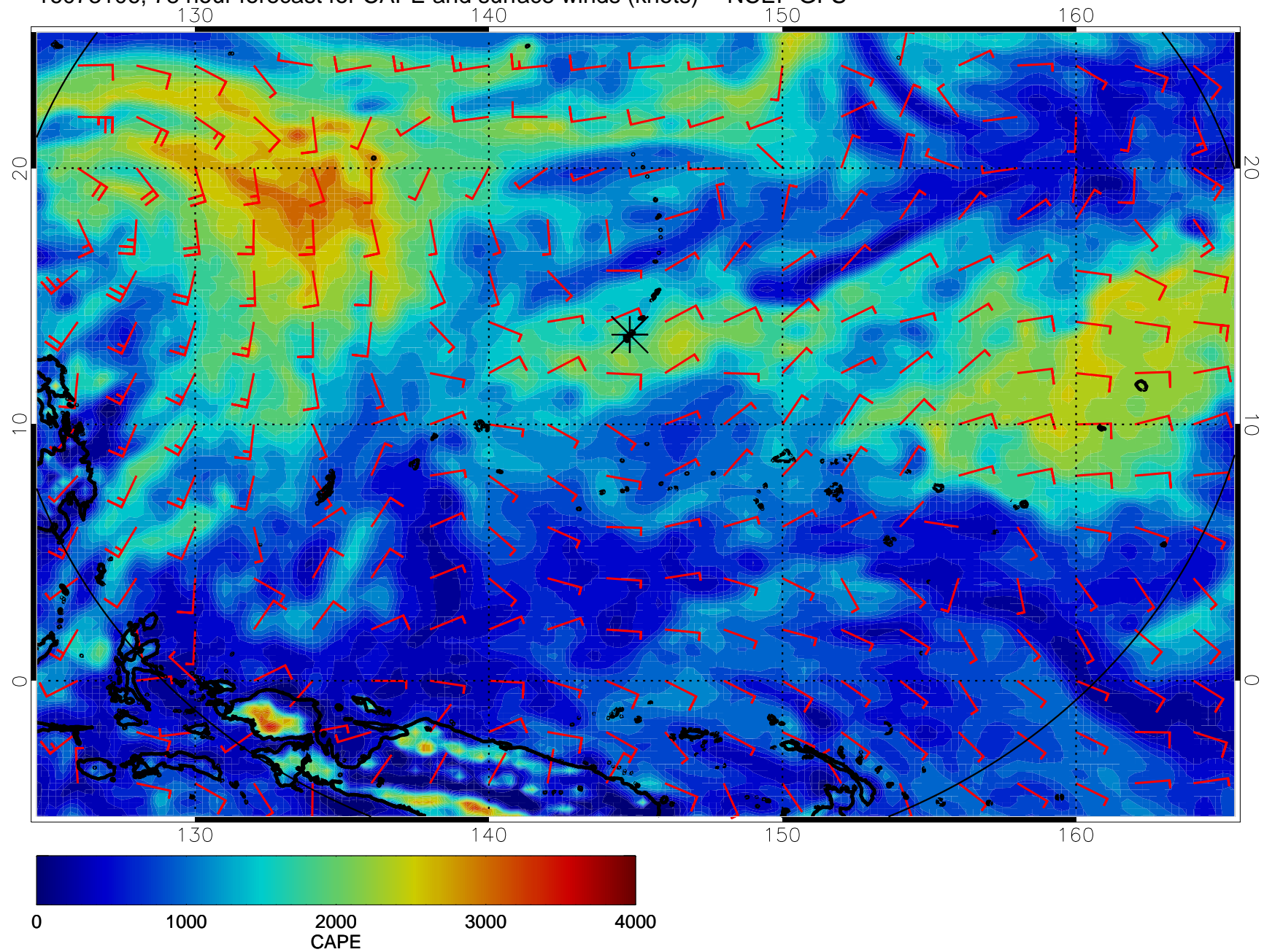
16073018, 66 hour forecast for CAPE and surface winds (knots) -- NCEP GFS



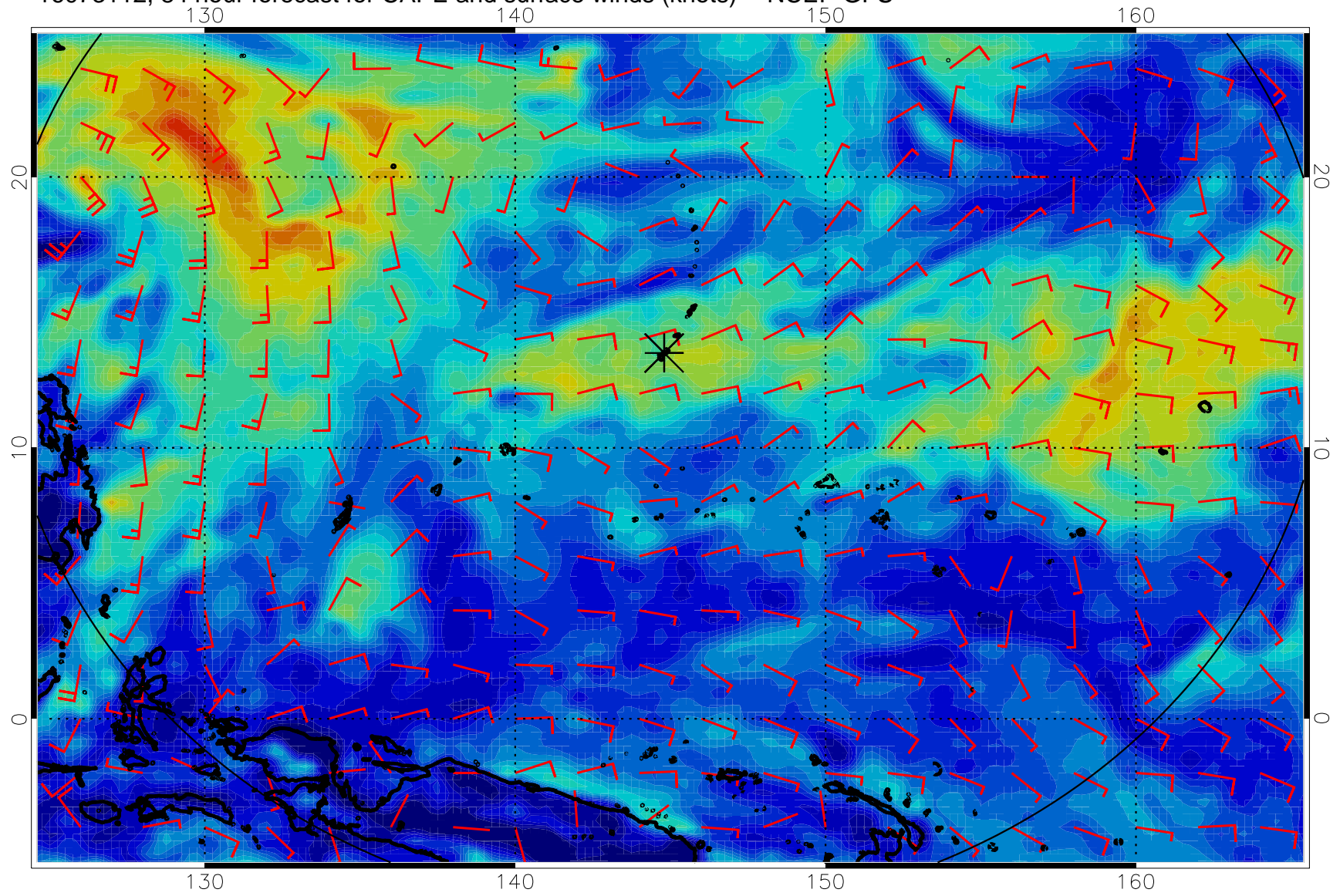
16073100, 72 hour forecast for CAPE and surface winds (knots) -- NCEP GFS



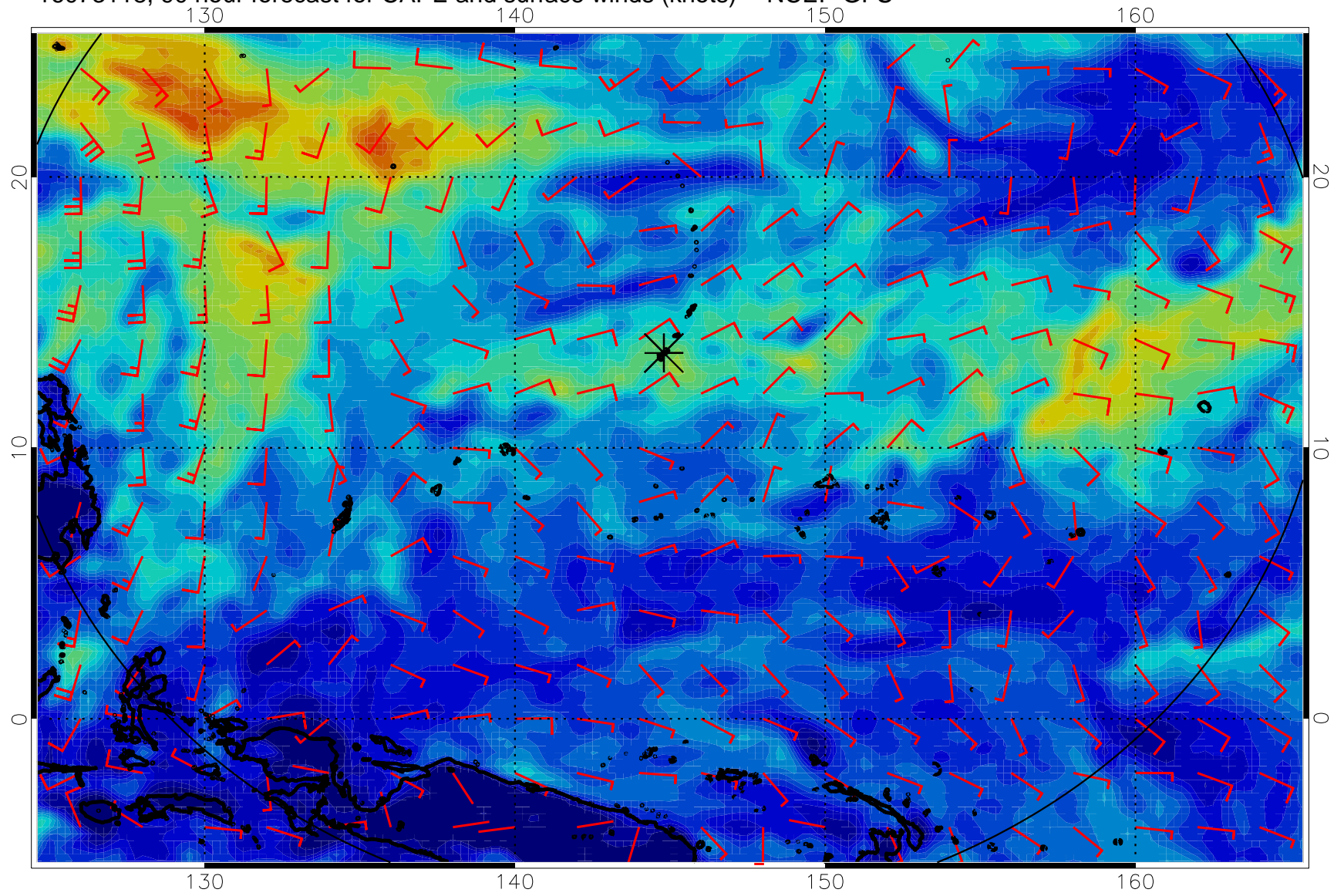
16073106, 78 hour forecast for CAPE and surface winds (knots) -- NCEP GFS



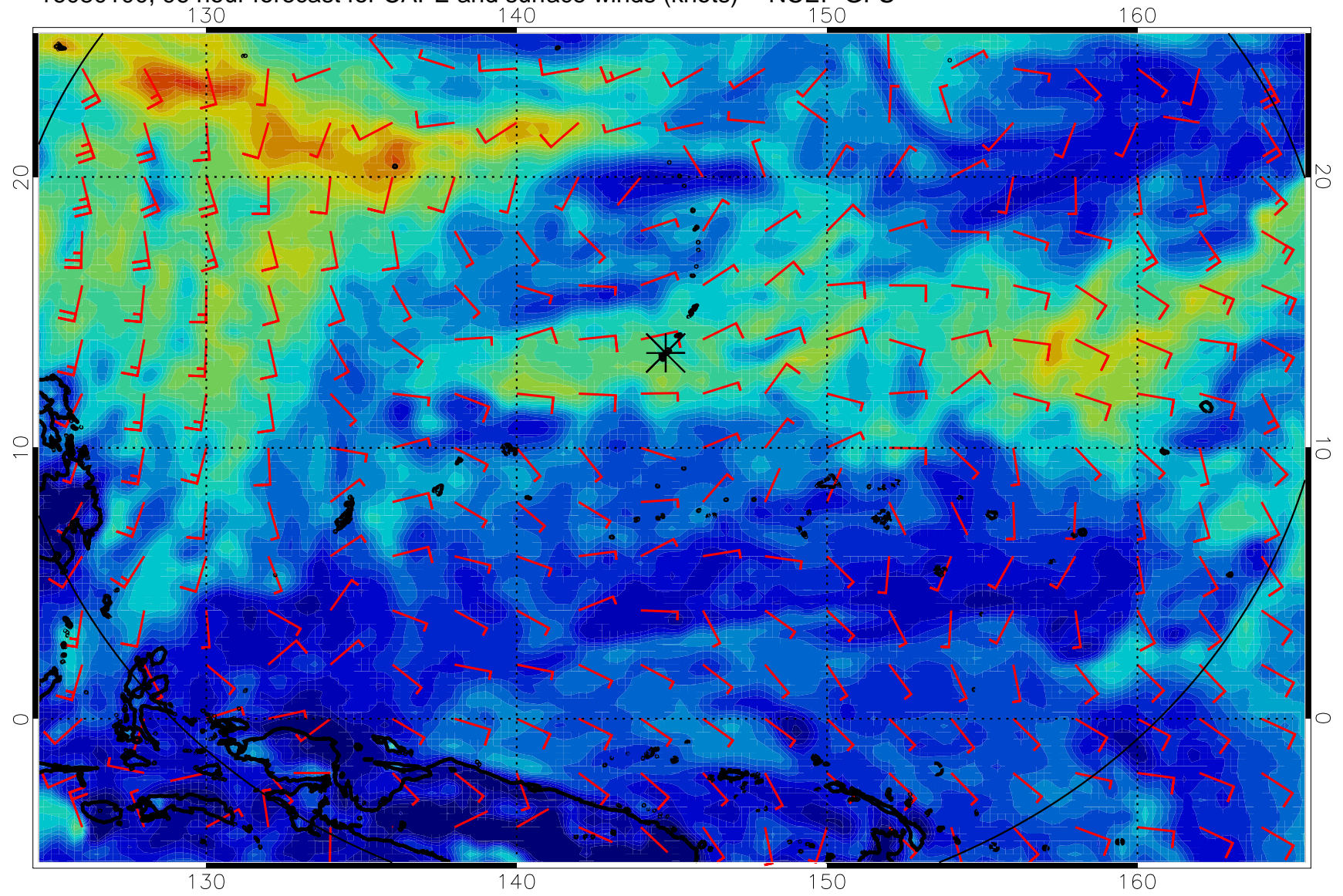
16073112, 84 hour forecast for CAPE and surface winds (knots) -- NCEP GFS



16073118, 90 hour forecast for CAPE and surface winds (knots) -- NCEP GFS

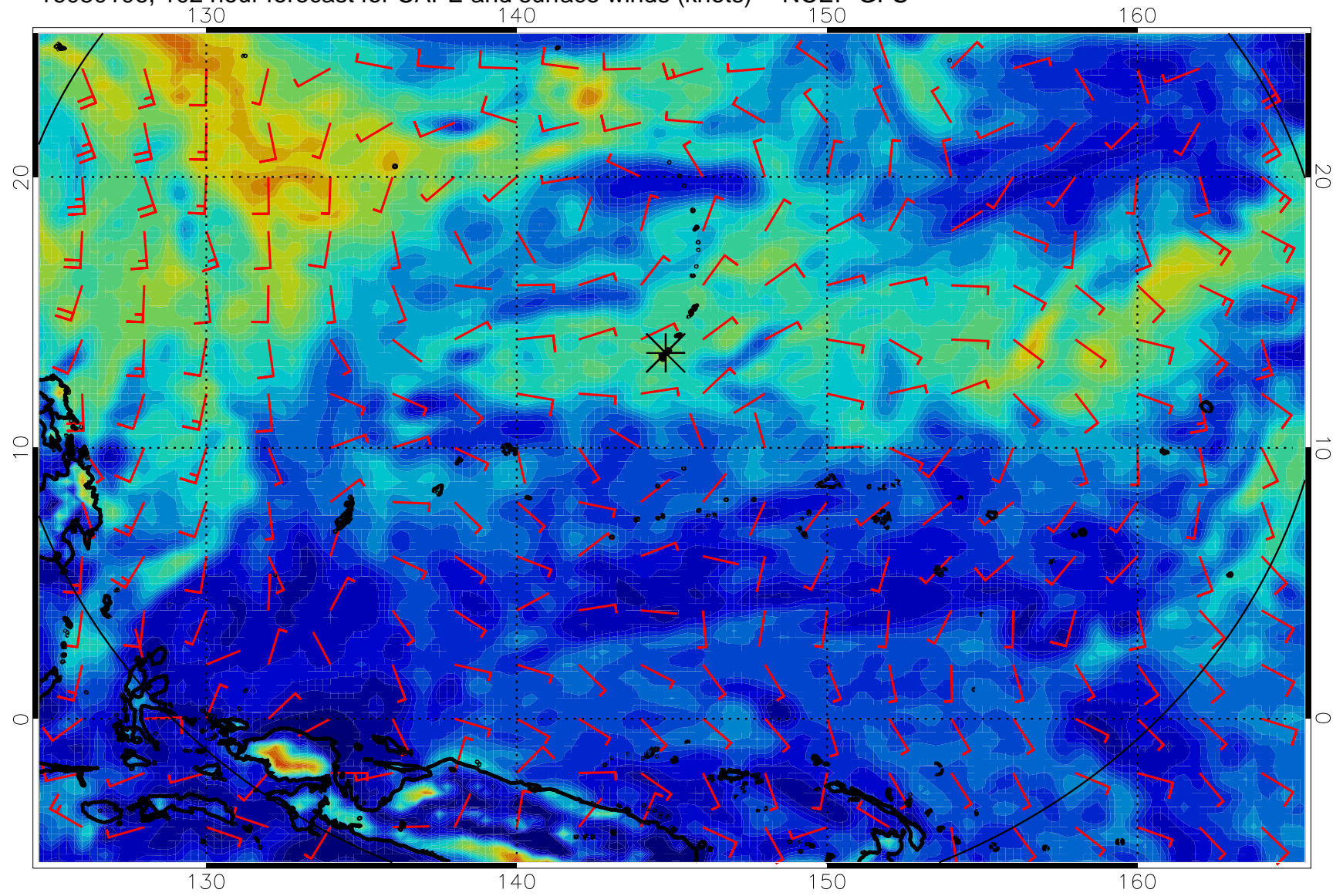


16080100, 96 hour forecast for CAPE and surface winds (knots) -- NCEP GFS

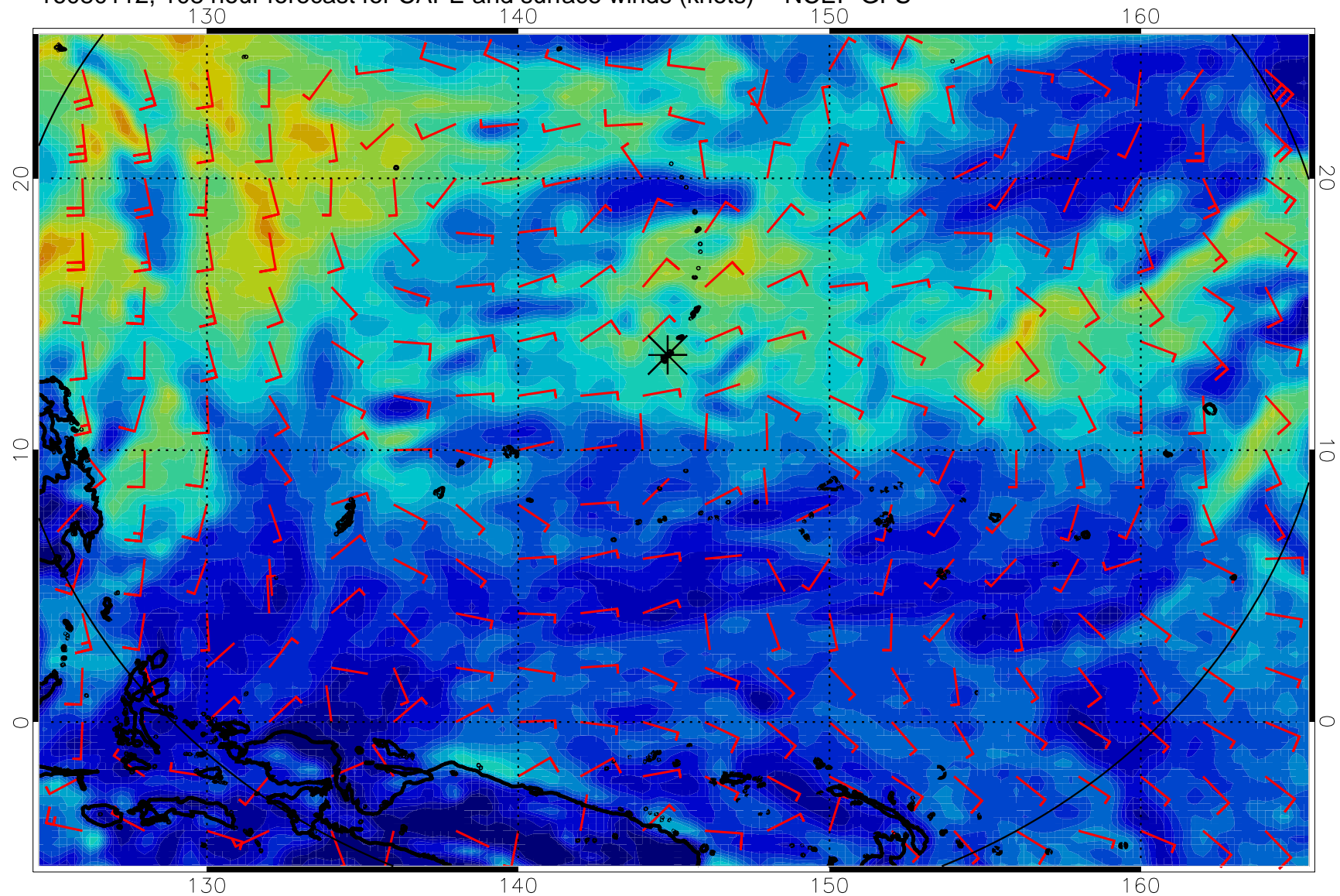




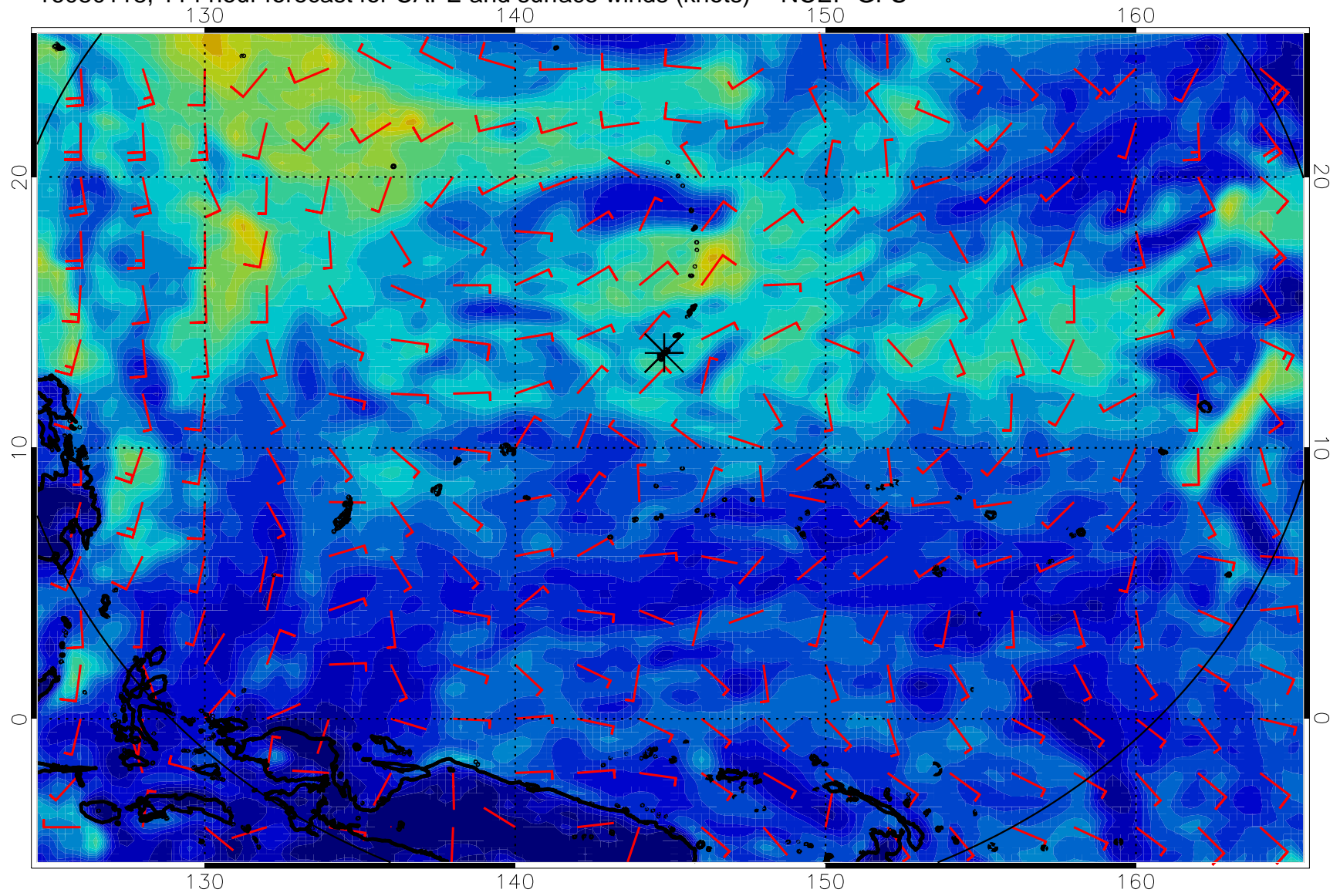
16080106, 102 hour forecast for CAPE and surface winds (knots) -- NCEP GFS



16080112, 108 hour forecast for CAPE and surface winds (knots) -- NCEP GFS



16080118, 114 hour forecast for CAPE and surface winds (knots) -- NCEP GFS



16080200, 120 hour forecast for CAPE and surface winds (knots) -- NCEP GFS

