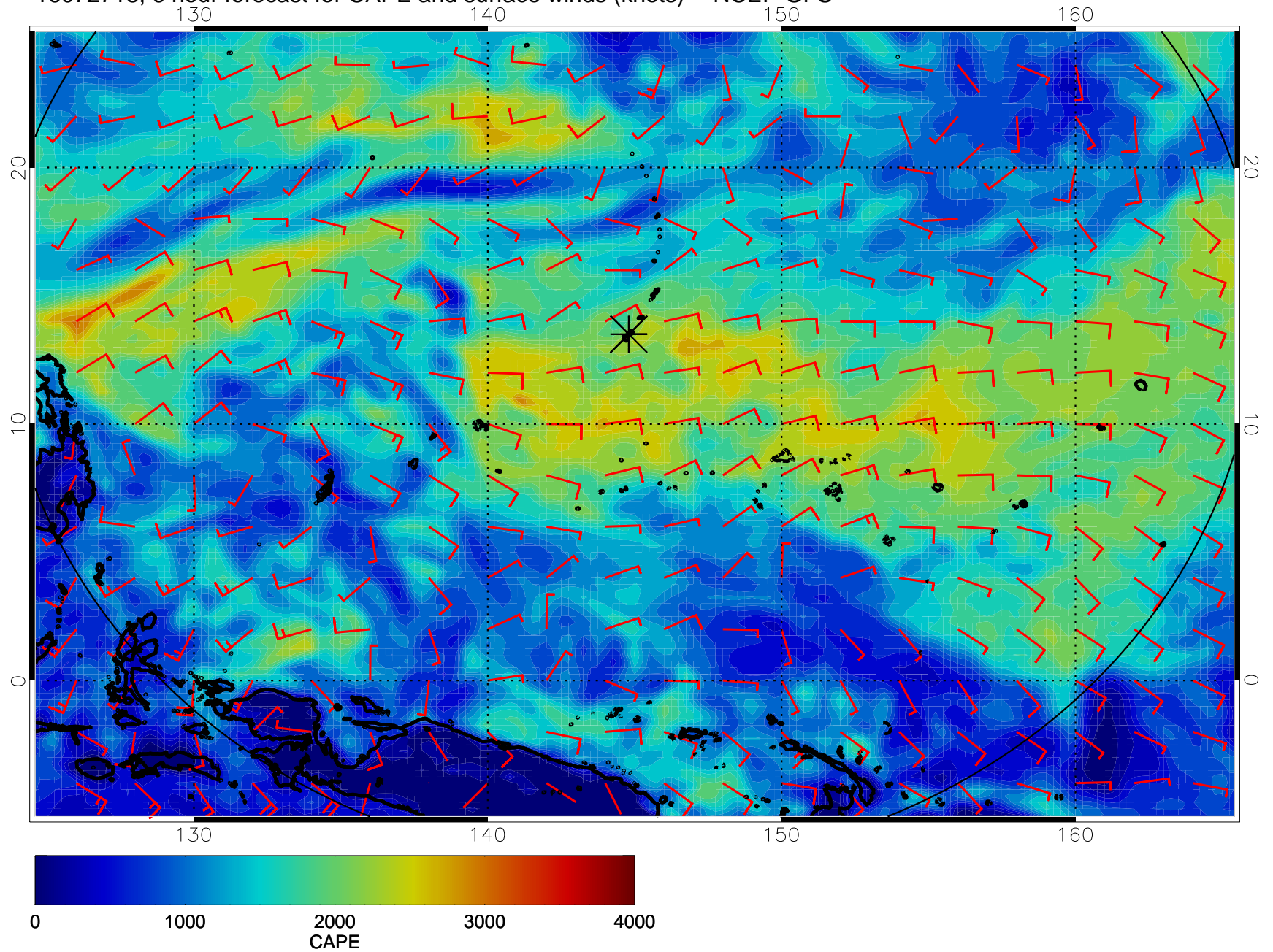
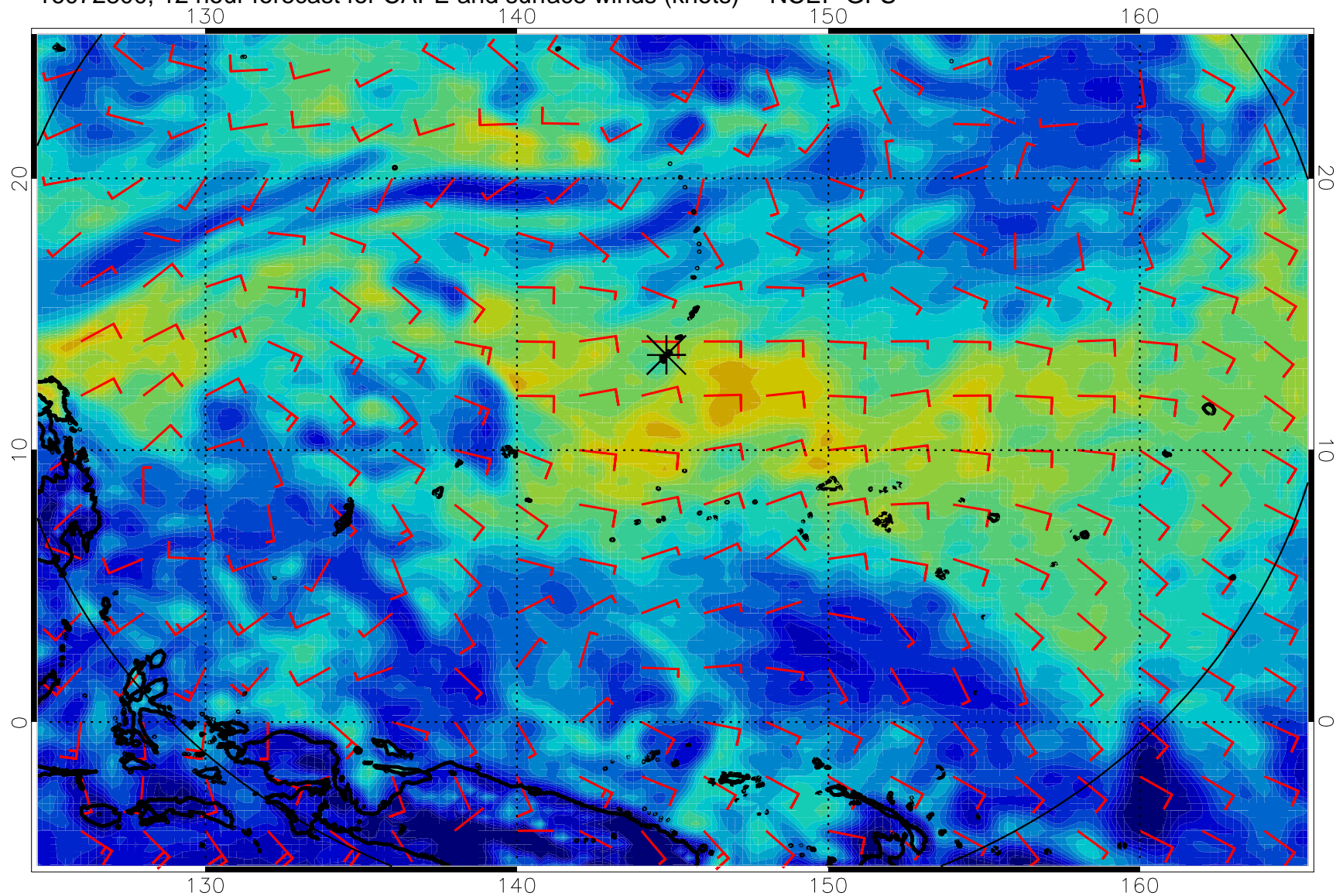


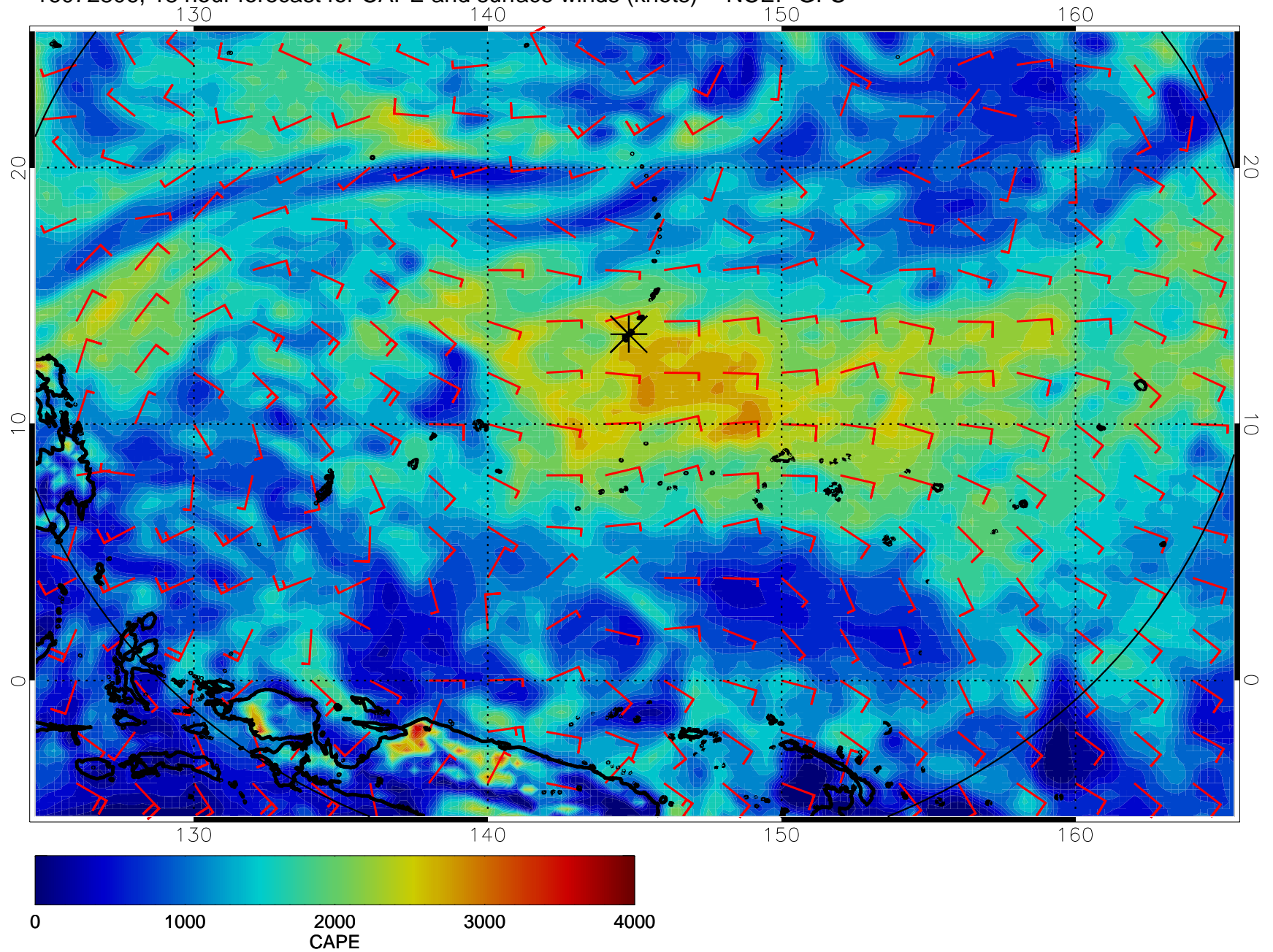
16072718, 6 hour forecast for CAPE and surface winds (knots) -- NCEP GFS



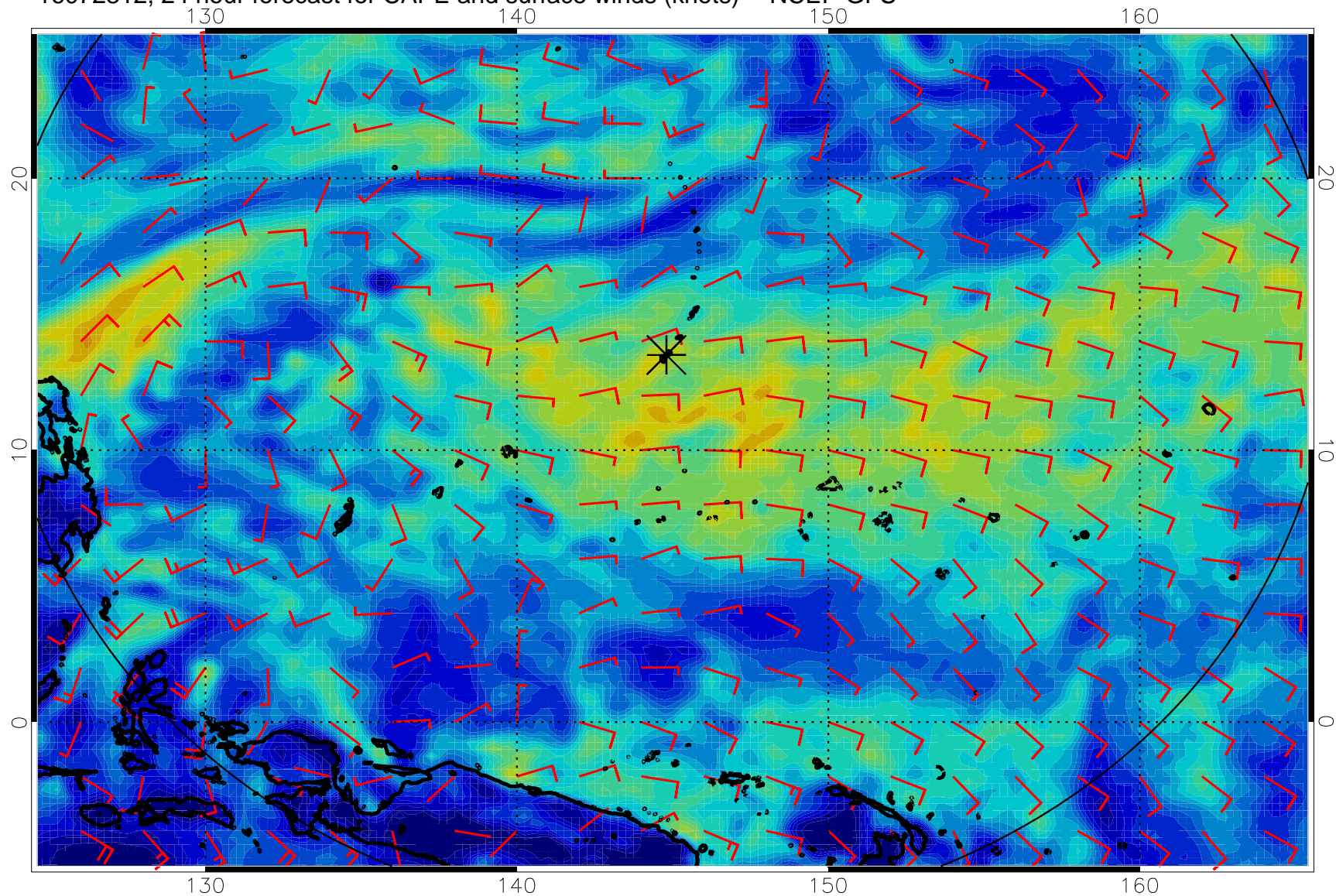
16072800, 12 hour forecast for CAPE and surface winds (knots) -- NCEP GFS



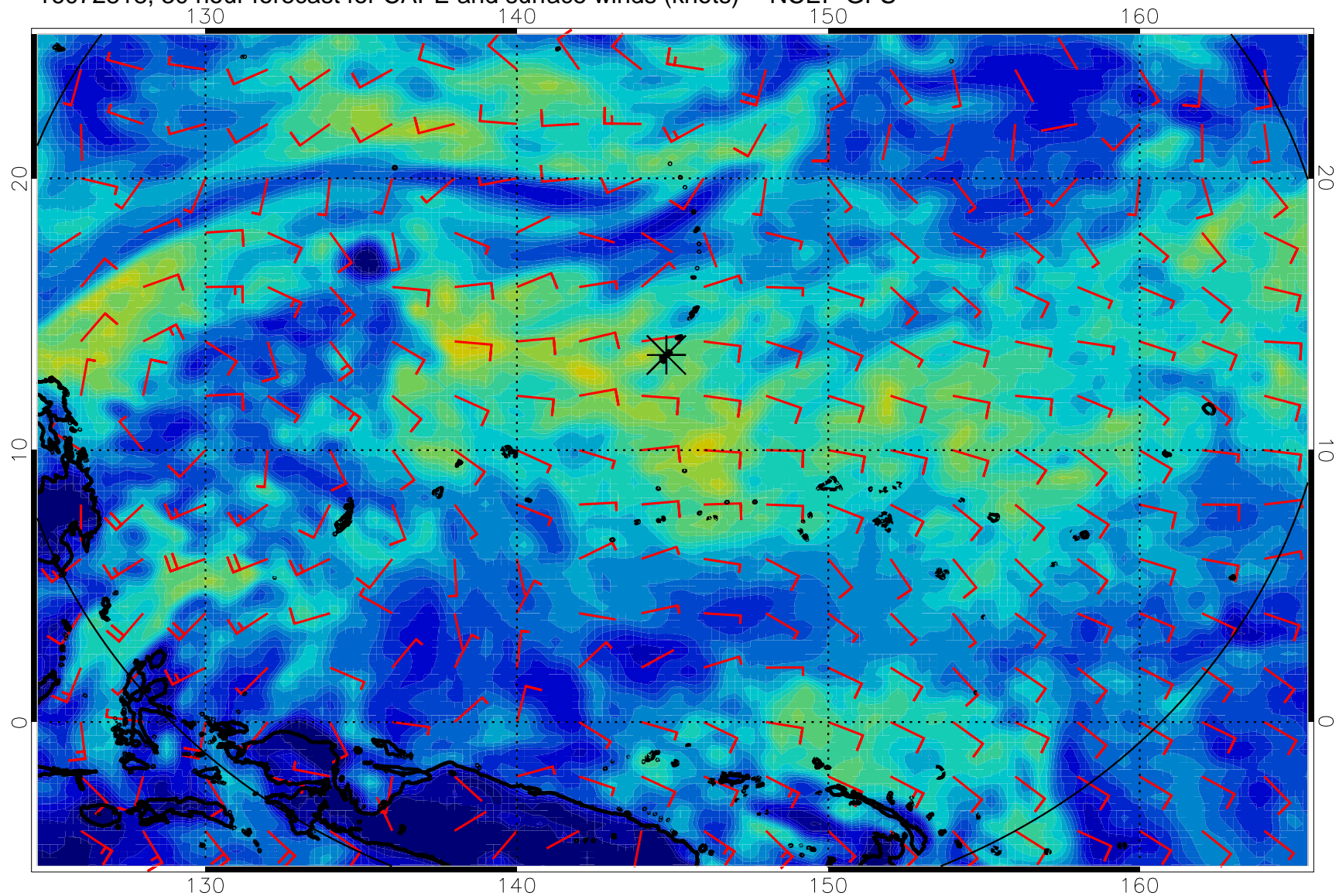
16072806, 18 hour forecast for CAPE and surface winds (knots) -- NCEP GFS



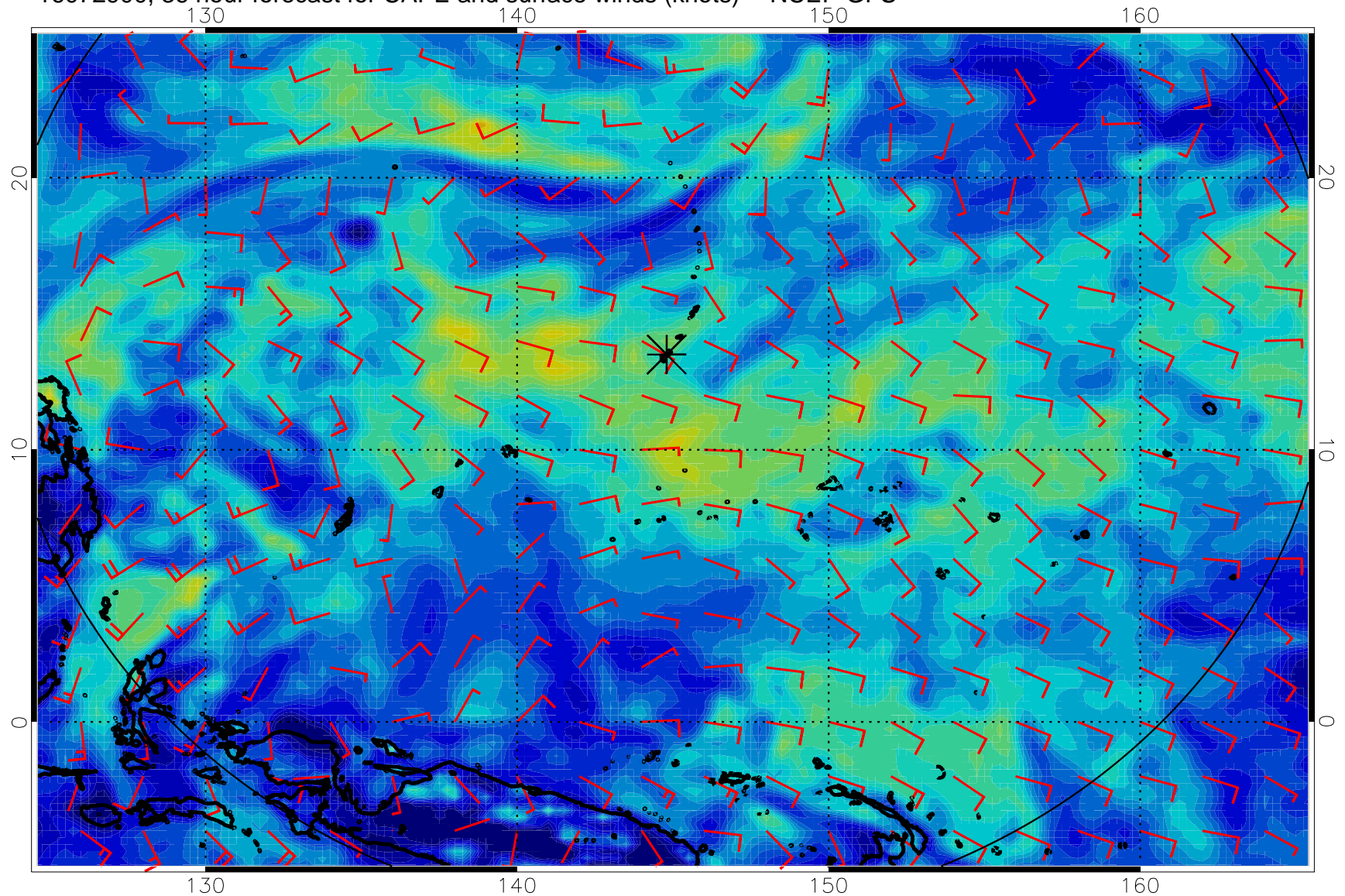
16072812, 24 hour forecast for CAPE and surface winds (knots) -- NCEP GFS



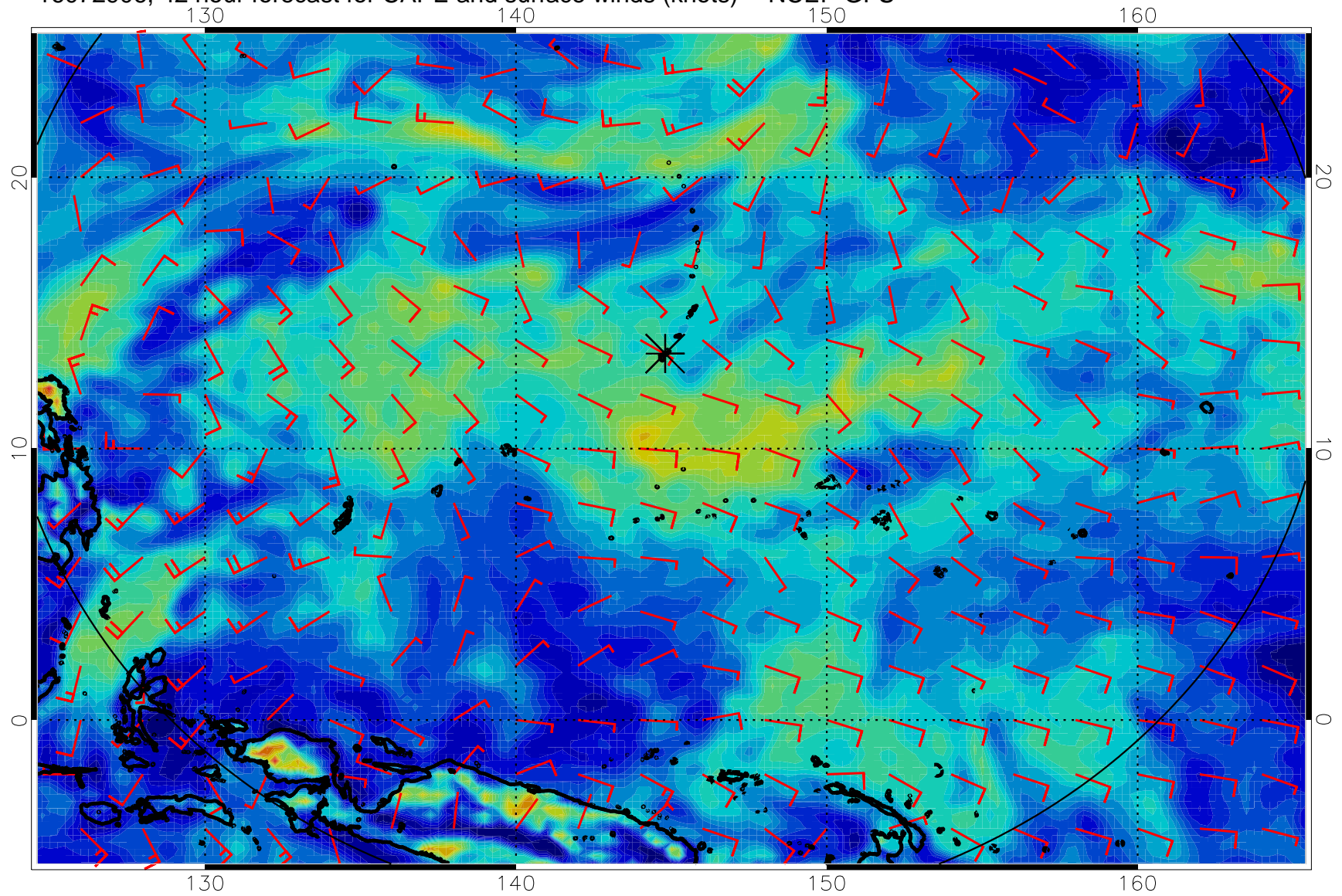
16072818, 30 hour forecast for CAPE and surface winds (knots) -- NCEP GFS



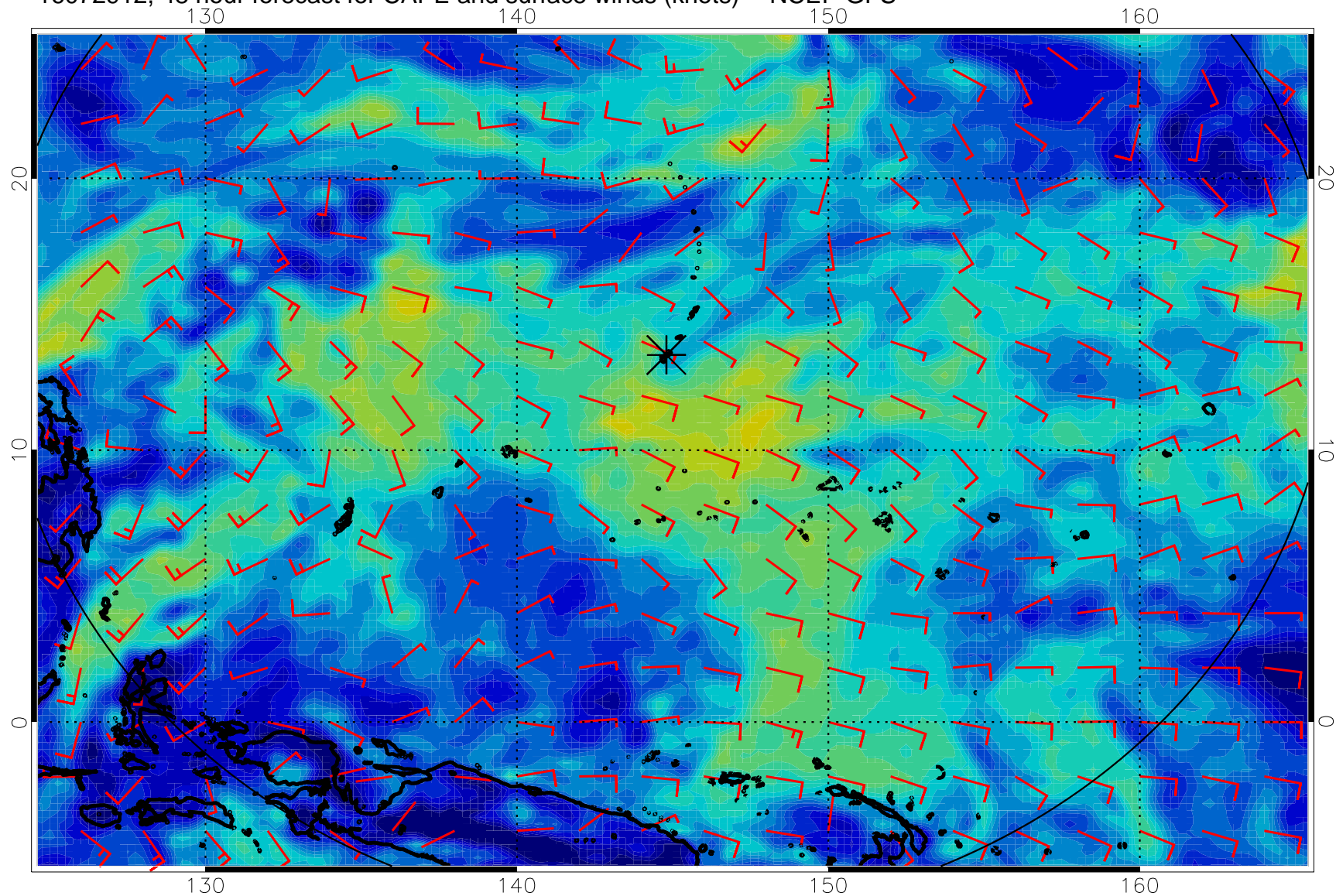
16072900, 36 hour forecast for CAPE and surface winds (knots) -- NCEP GFS



16072906, 42 hour forecast for CAPE and surface winds (knots) -- NCEP GFS

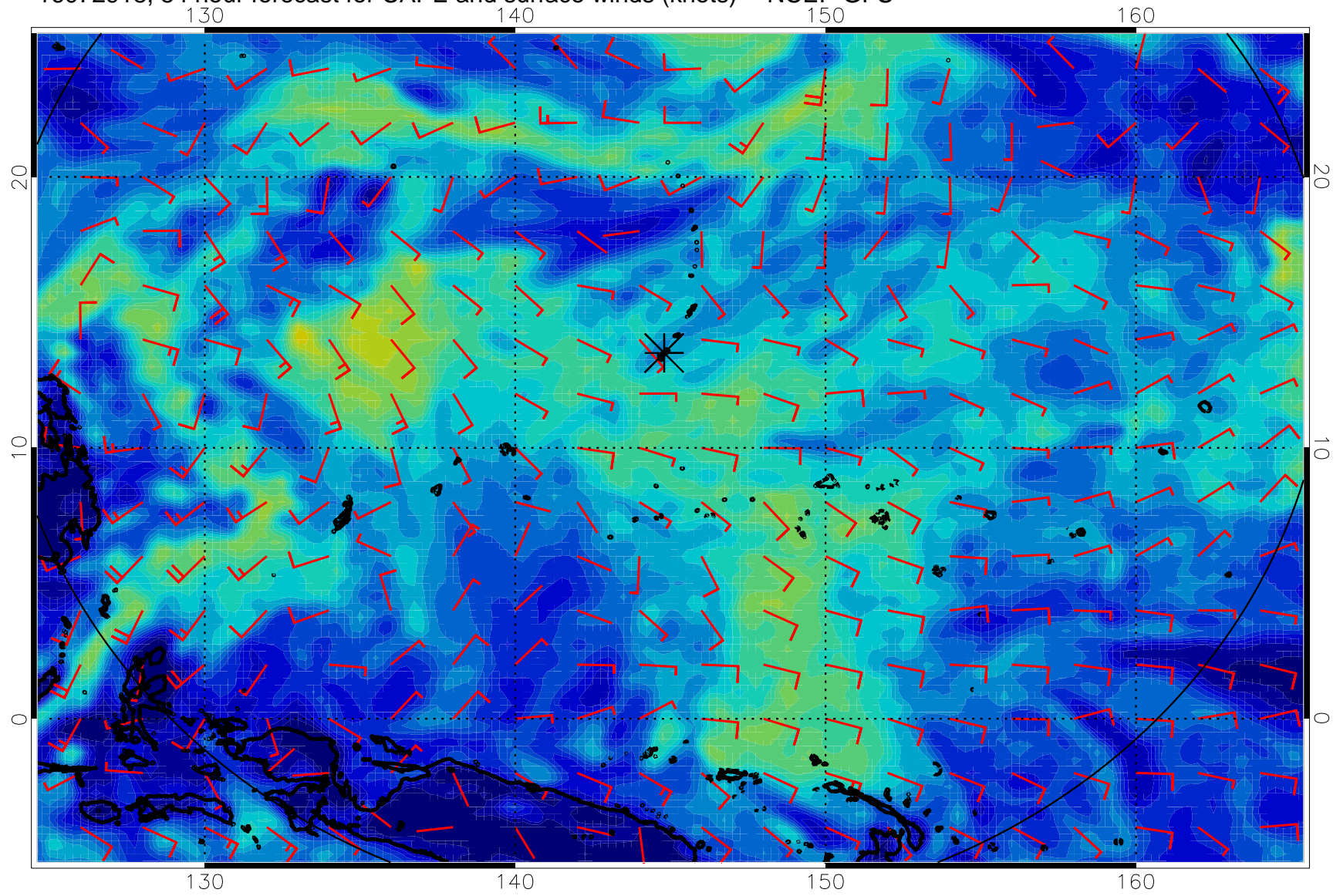


16072912, 48 hour forecast for CAPE and surface winds (knots) -- NCEP GFS

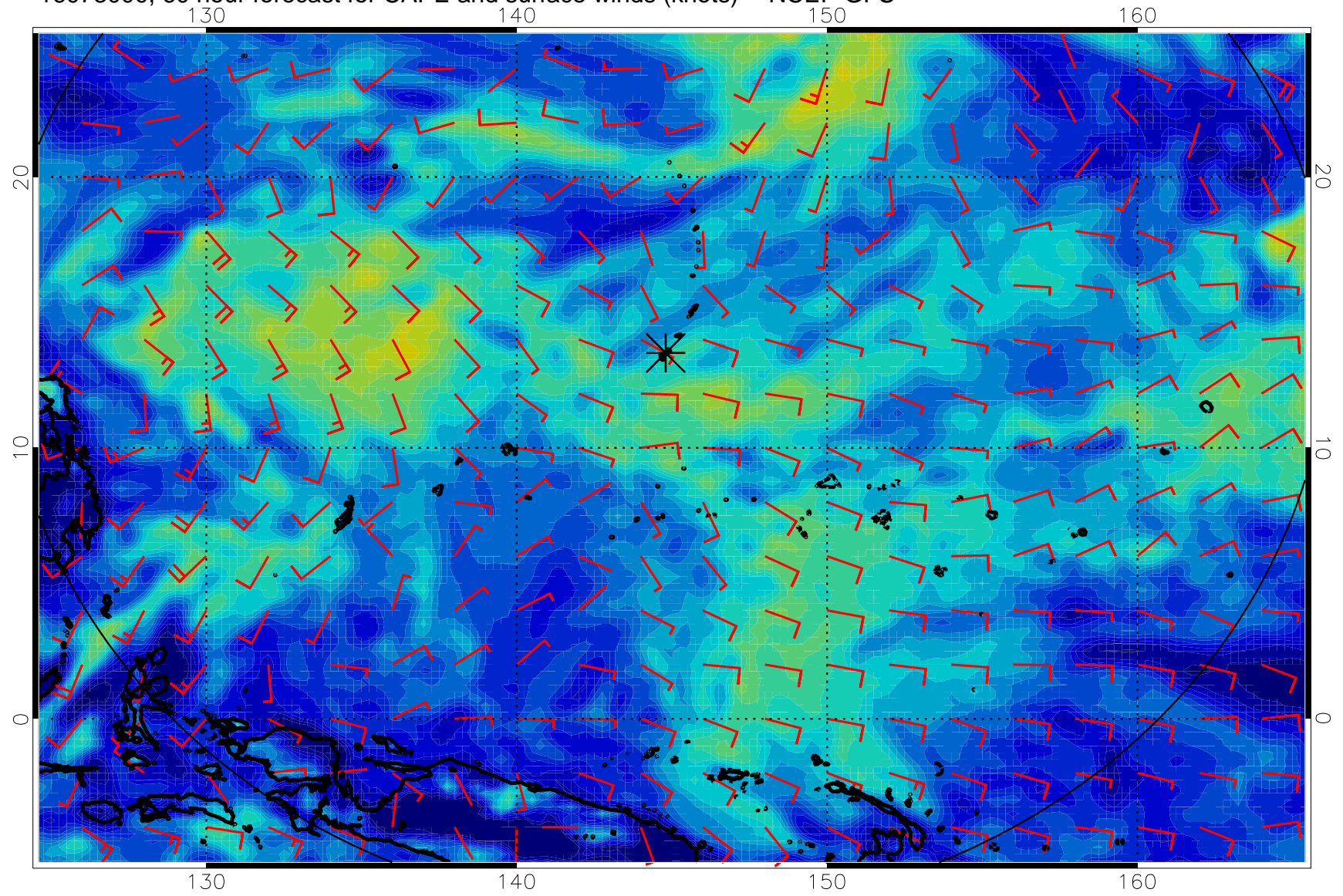




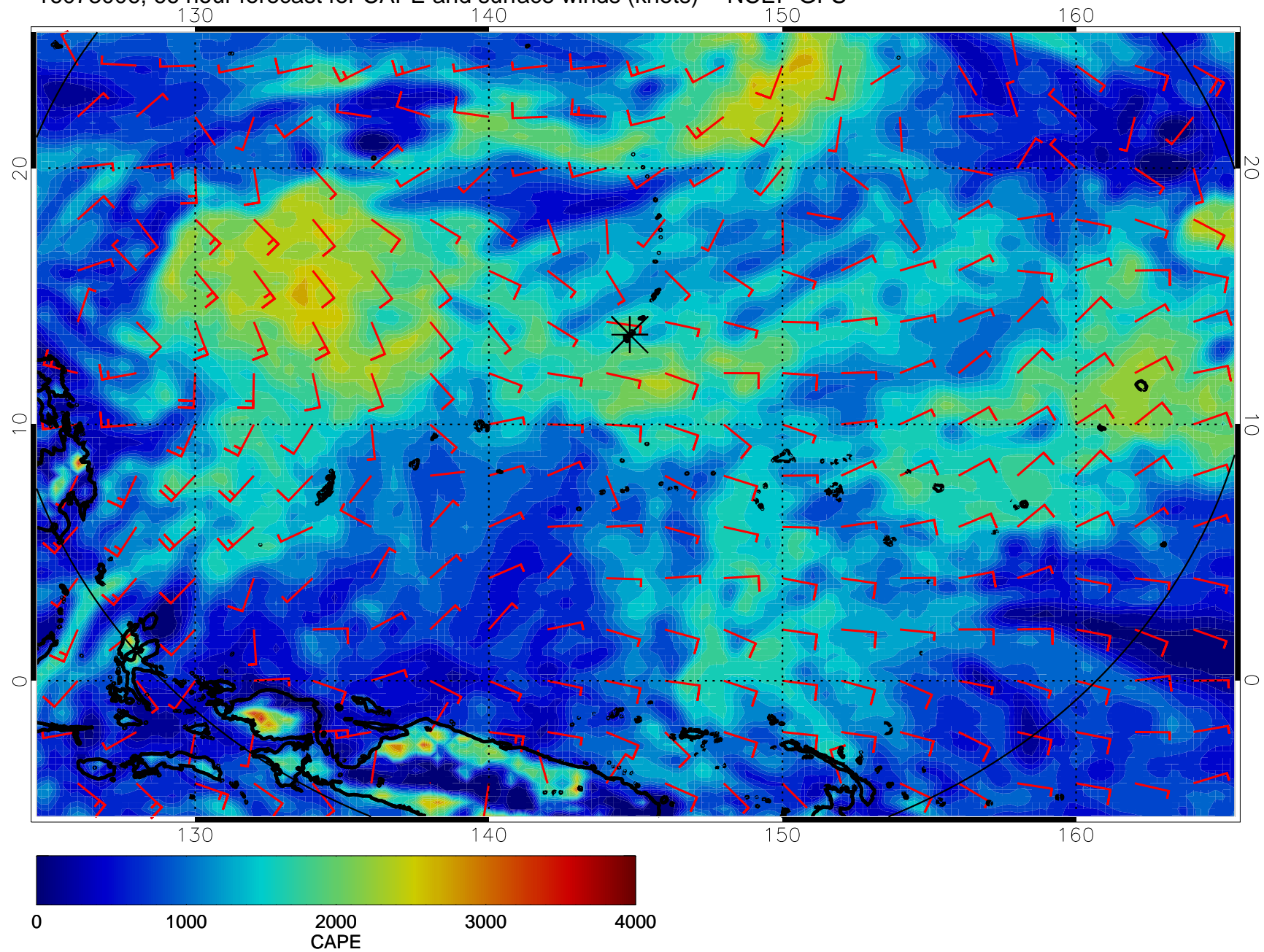
16072918, 54 hour forecast for CAPE and surface winds (knots) -- NCEP GFS



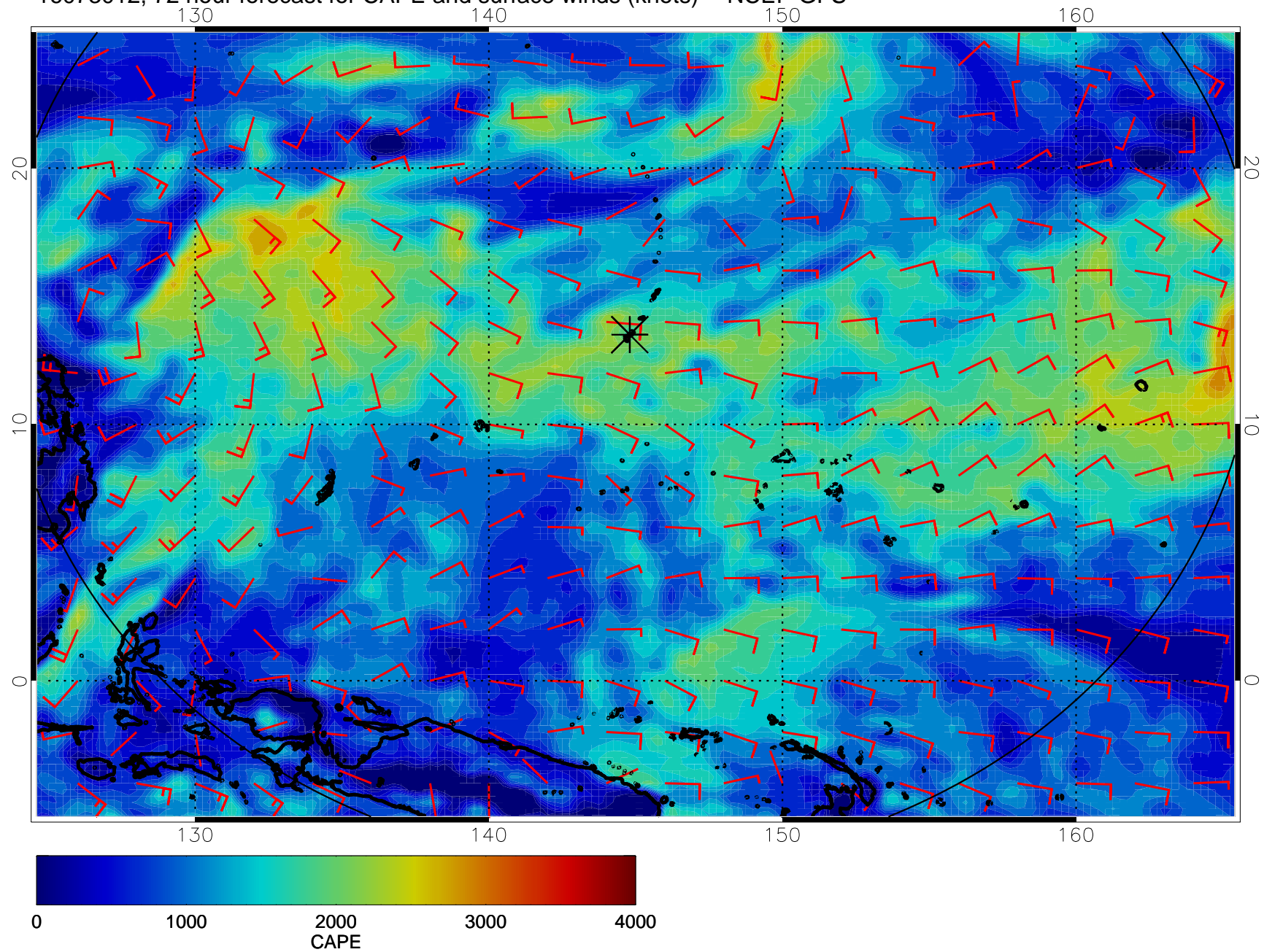
16073000, 60 hour forecast for CAPE and surface winds (knots) -- NCEP GFS



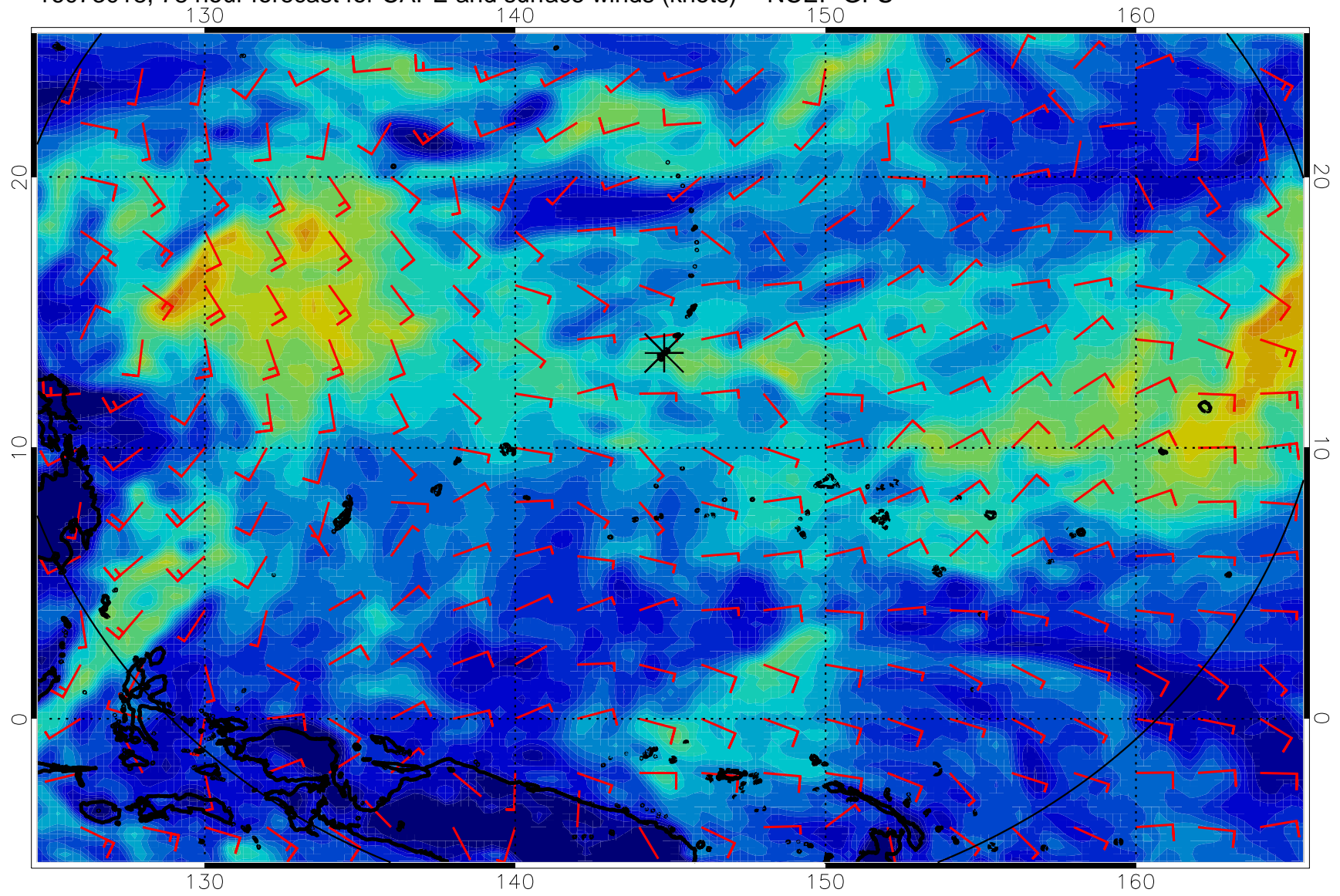
16073006, 66 hour forecast for CAPE and surface winds (knots) -- NCEP GFS



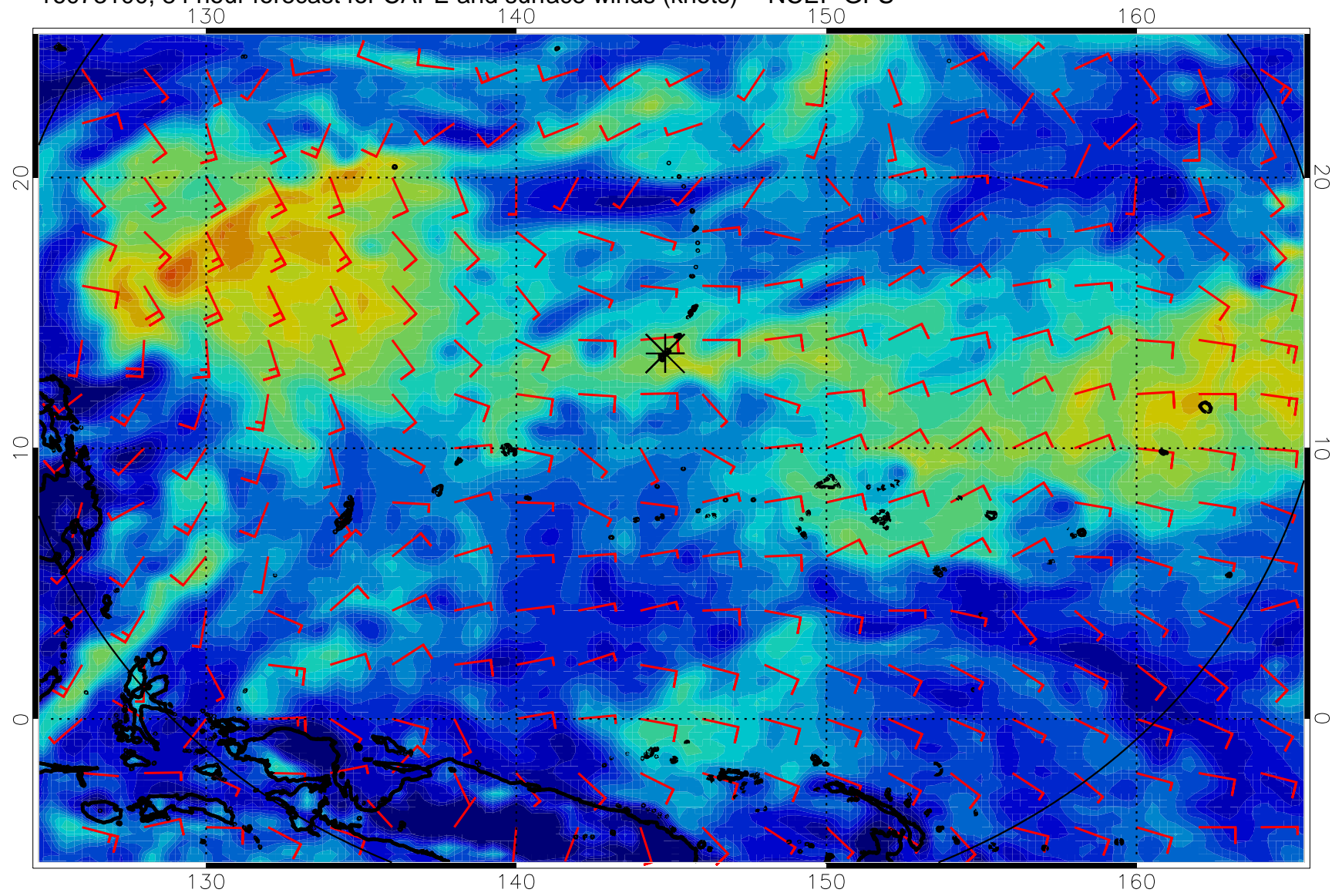
16073012, 72 hour forecast for CAPE and surface winds (knots) -- NCEP GFS



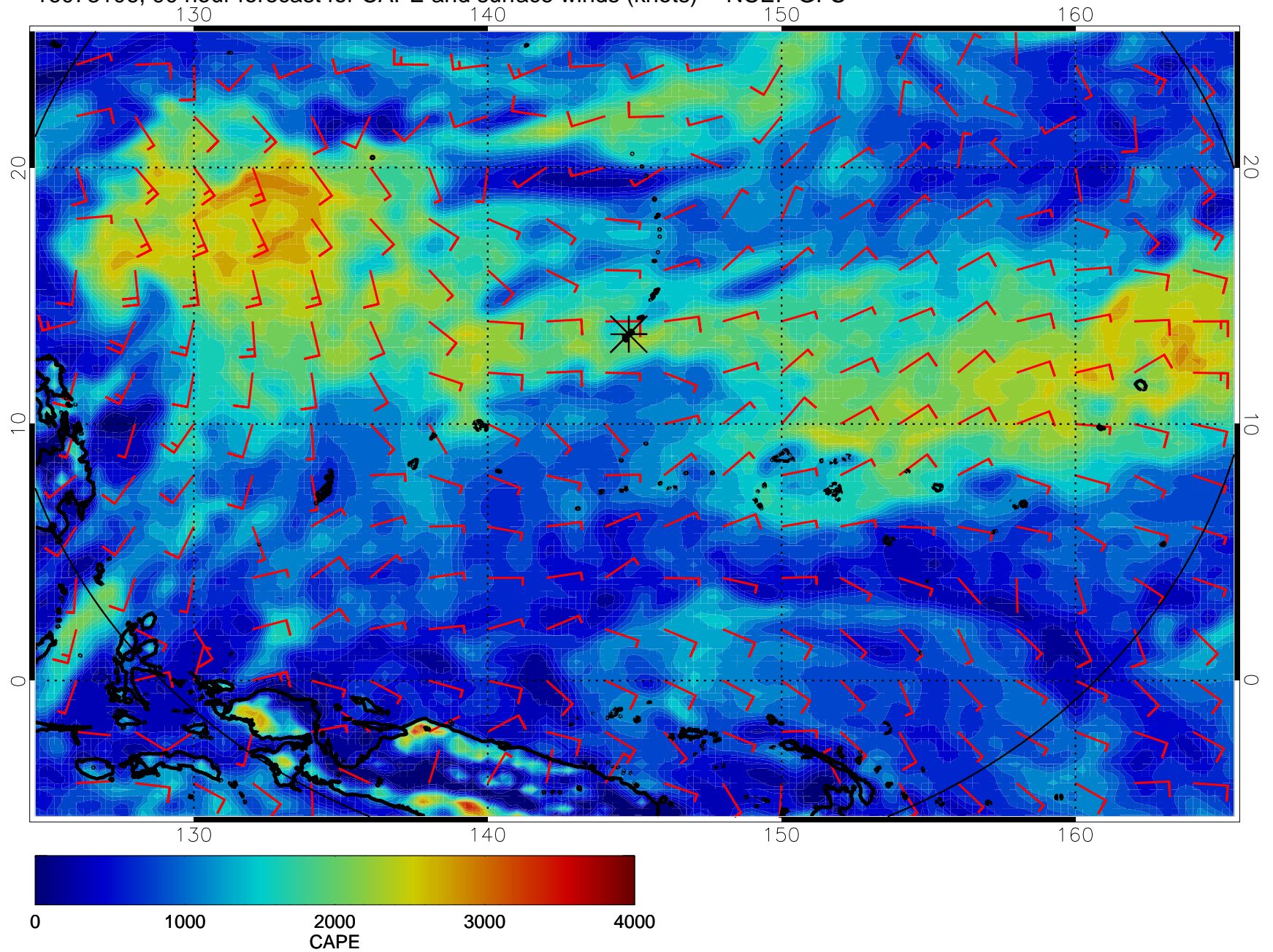
16073018, 78 hour forecast for CAPE and surface winds (knots) -- NCEP GFS



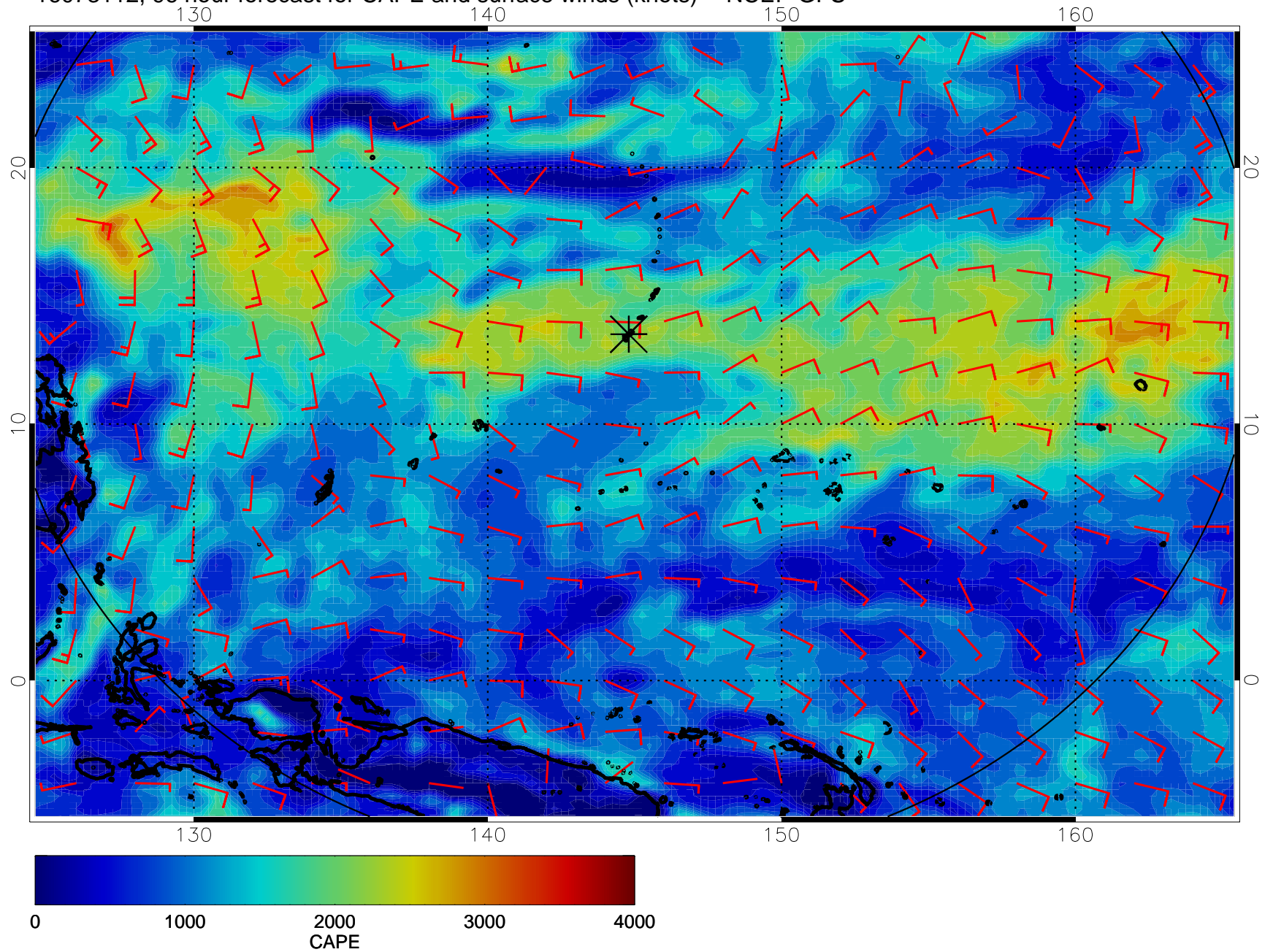
16073100, 84 hour forecast for CAPE and surface winds (knots) -- NCEP GFS



16073106, 90 hour forecast for CAPE and surface winds (knots) -- NCEP GFS

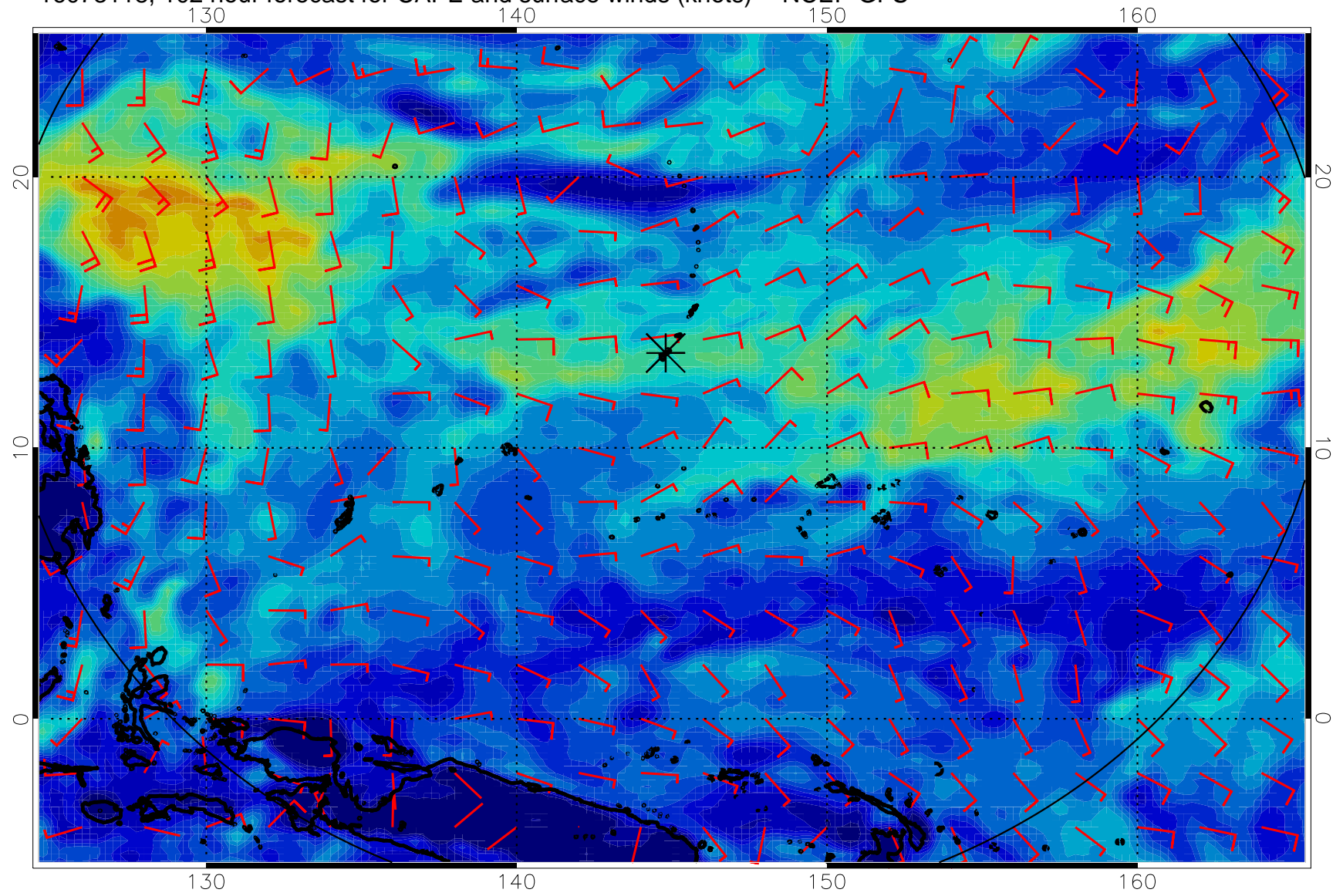


16073112, 96 hour forecast for CAPE and surface winds (knots) -- NCEP GFS

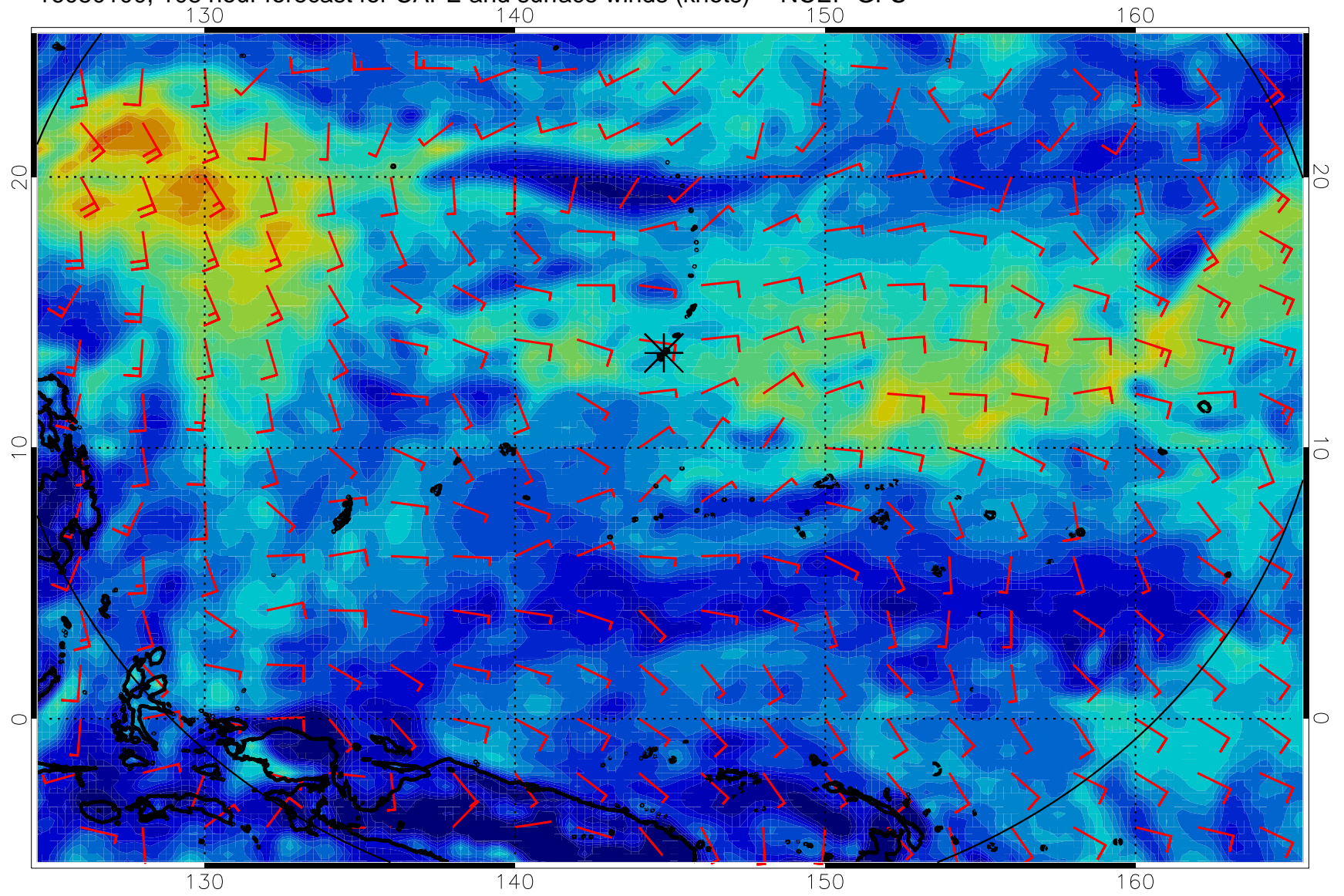




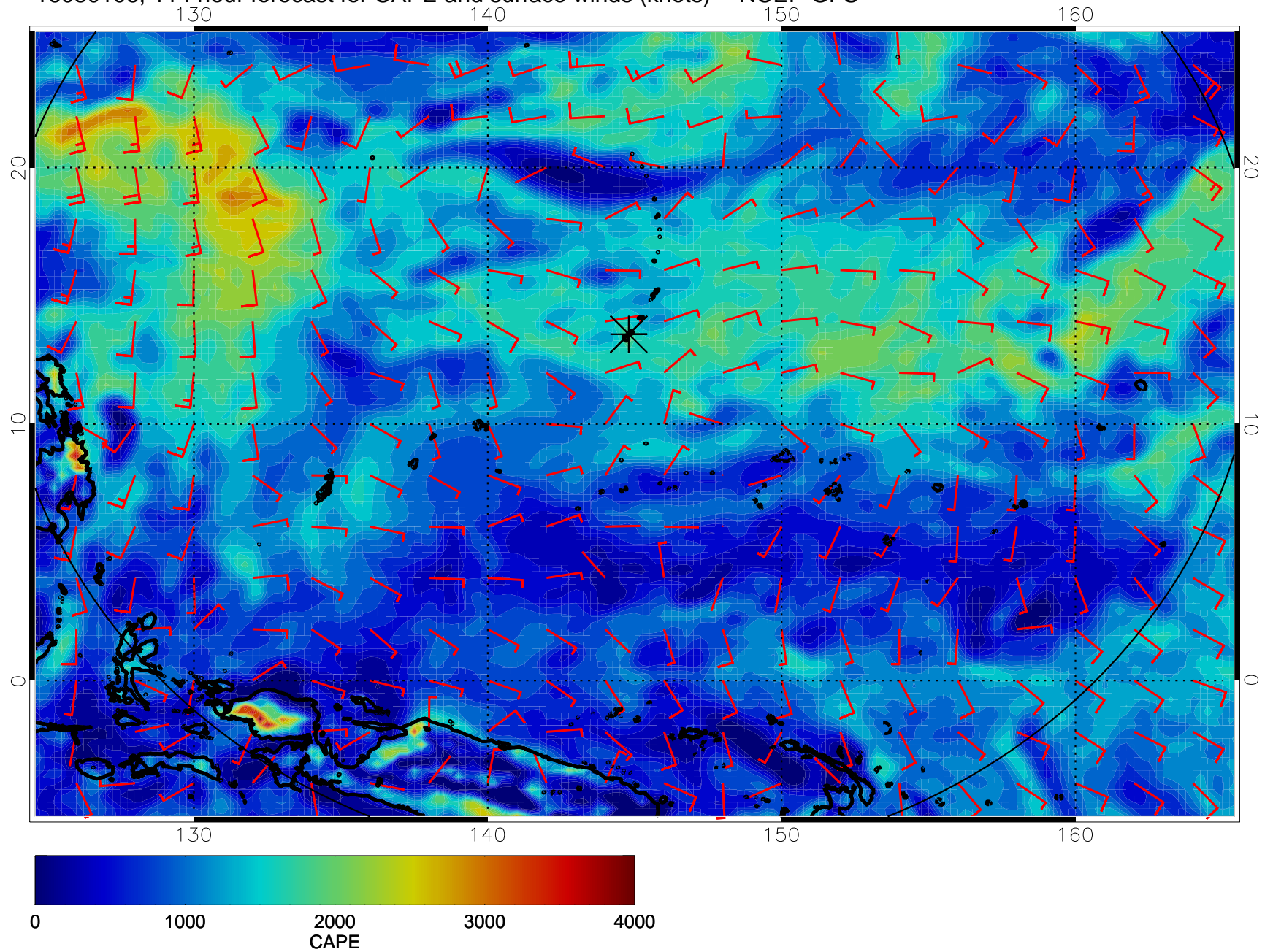
16073118, 102 hour forecast for CAPE and surface winds (knots) -- NCEP GFS



16080100, 108 hour forecast for CAPE and surface winds (knots) -- NCEP GFS



16080106, 114 hour forecast for CAPE and surface winds (knots) -- NCEP GFS



16080112, 120 hour forecast for CAPE and surface winds (knots) -- NCEP GFS

