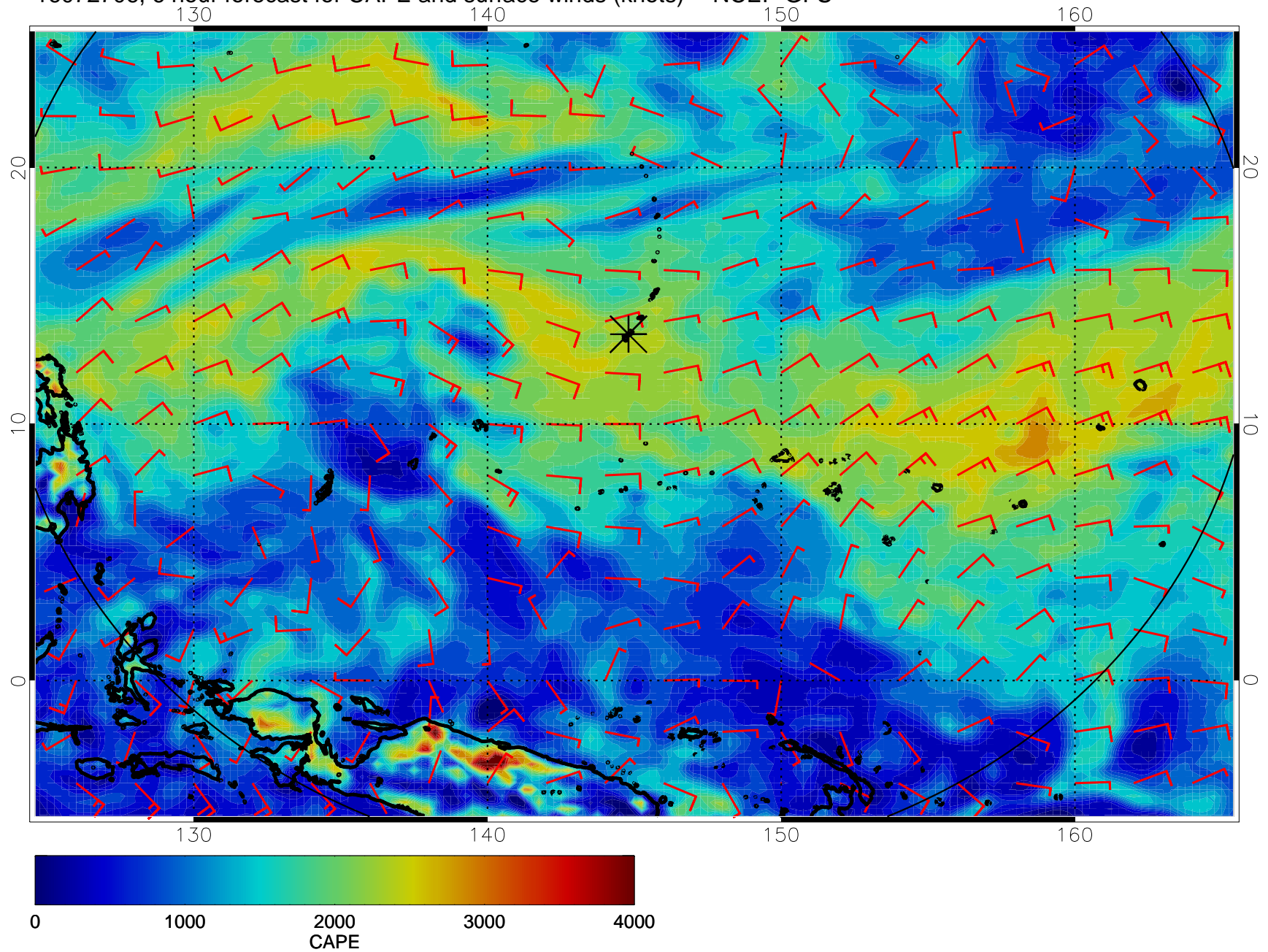
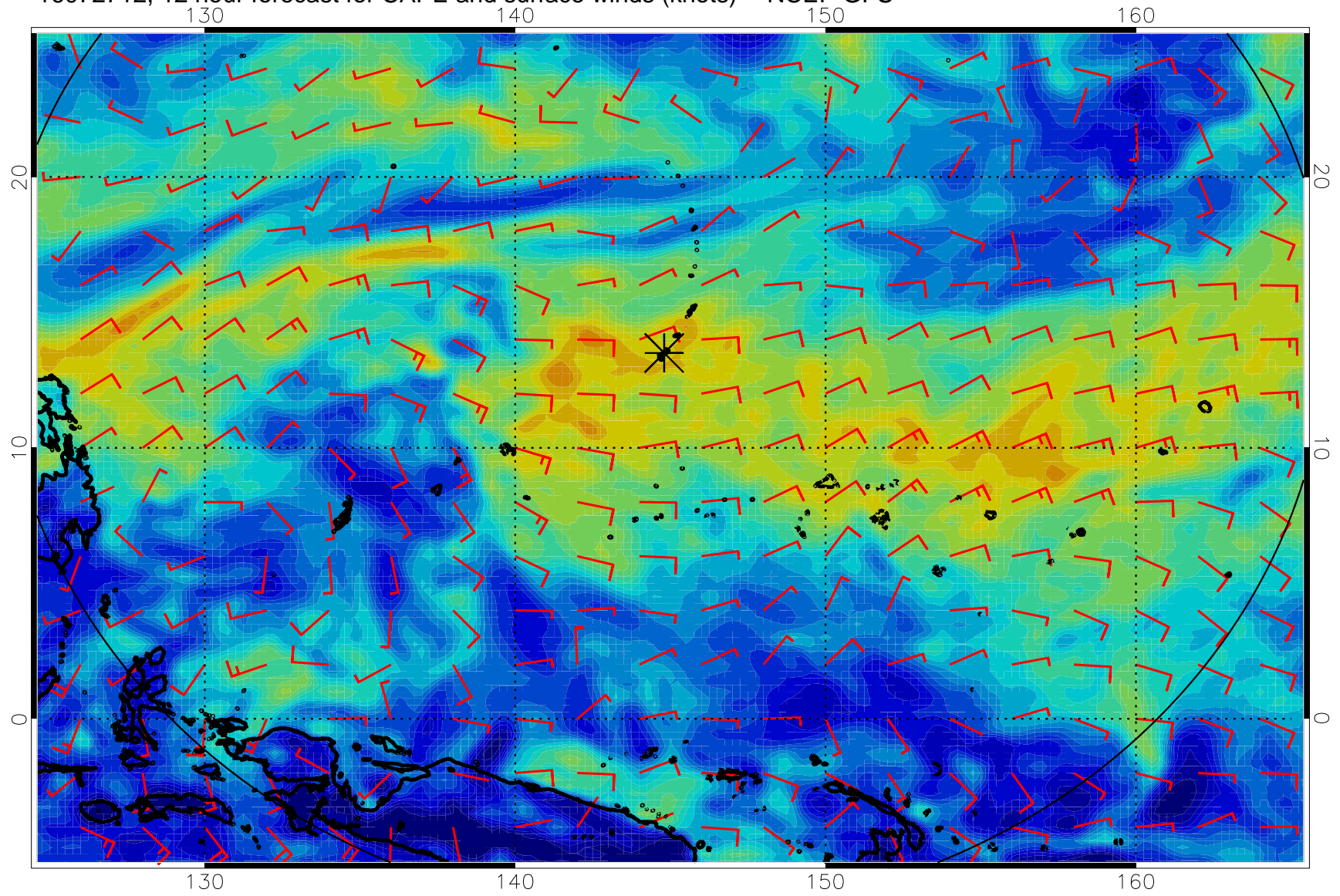


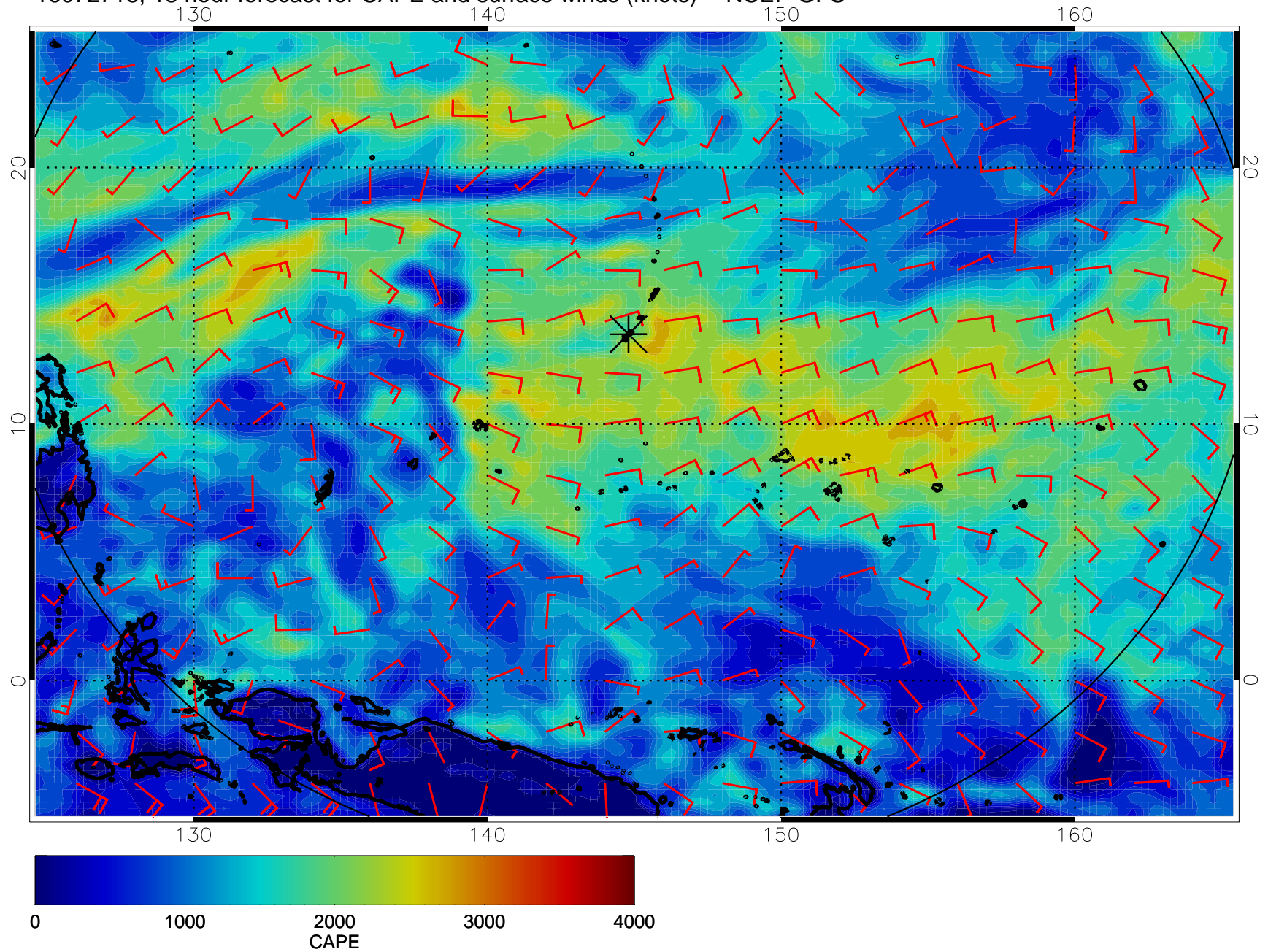
16072706, 6 hour forecast for CAPE and surface winds (knots) -- NCEP GFS



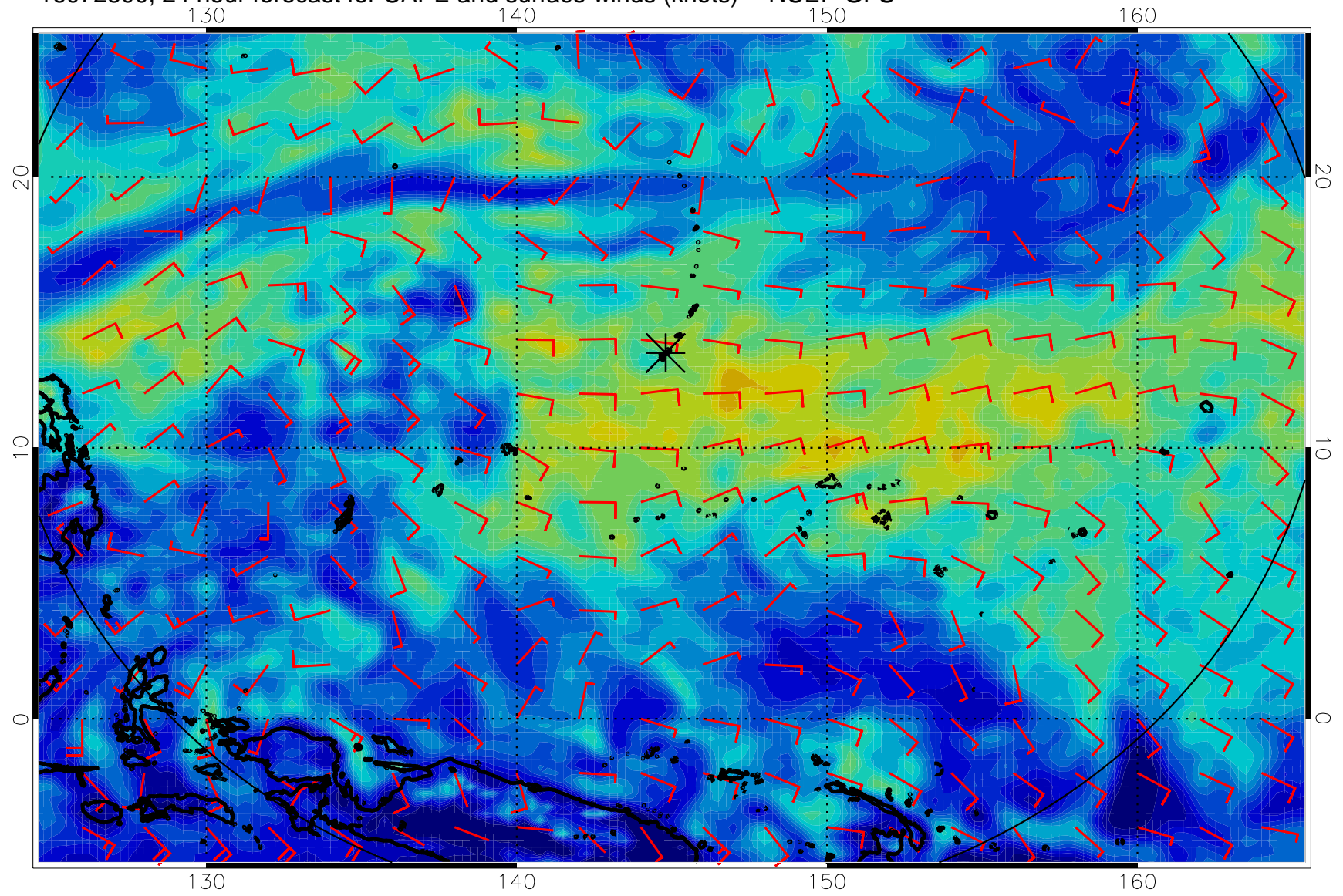
16072712, 12 hour forecast for CAPE and surface winds (knots) -- NCEP GFS



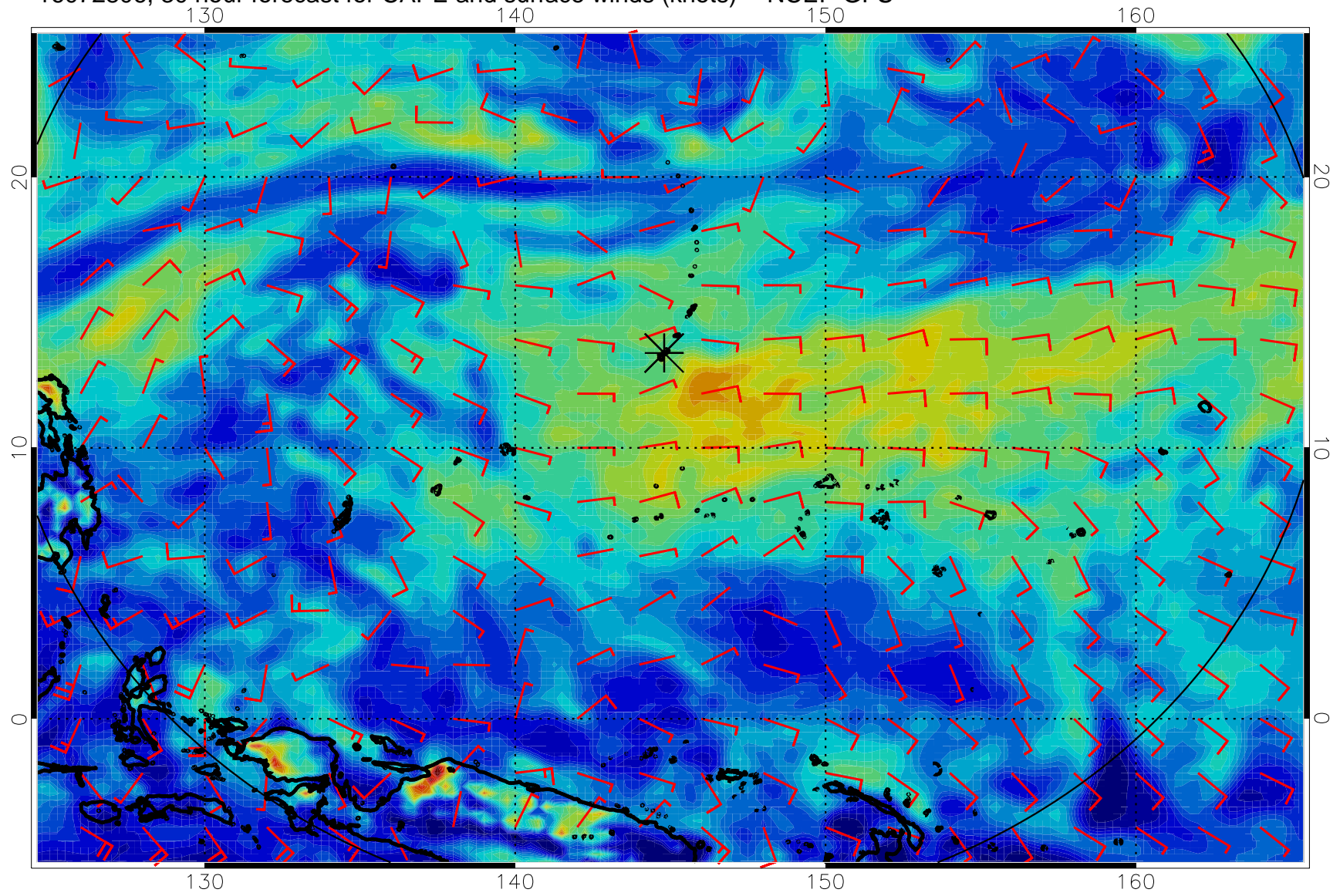
16072718, 18 hour forecast for CAPE and surface winds (knots) -- NCEP GFS



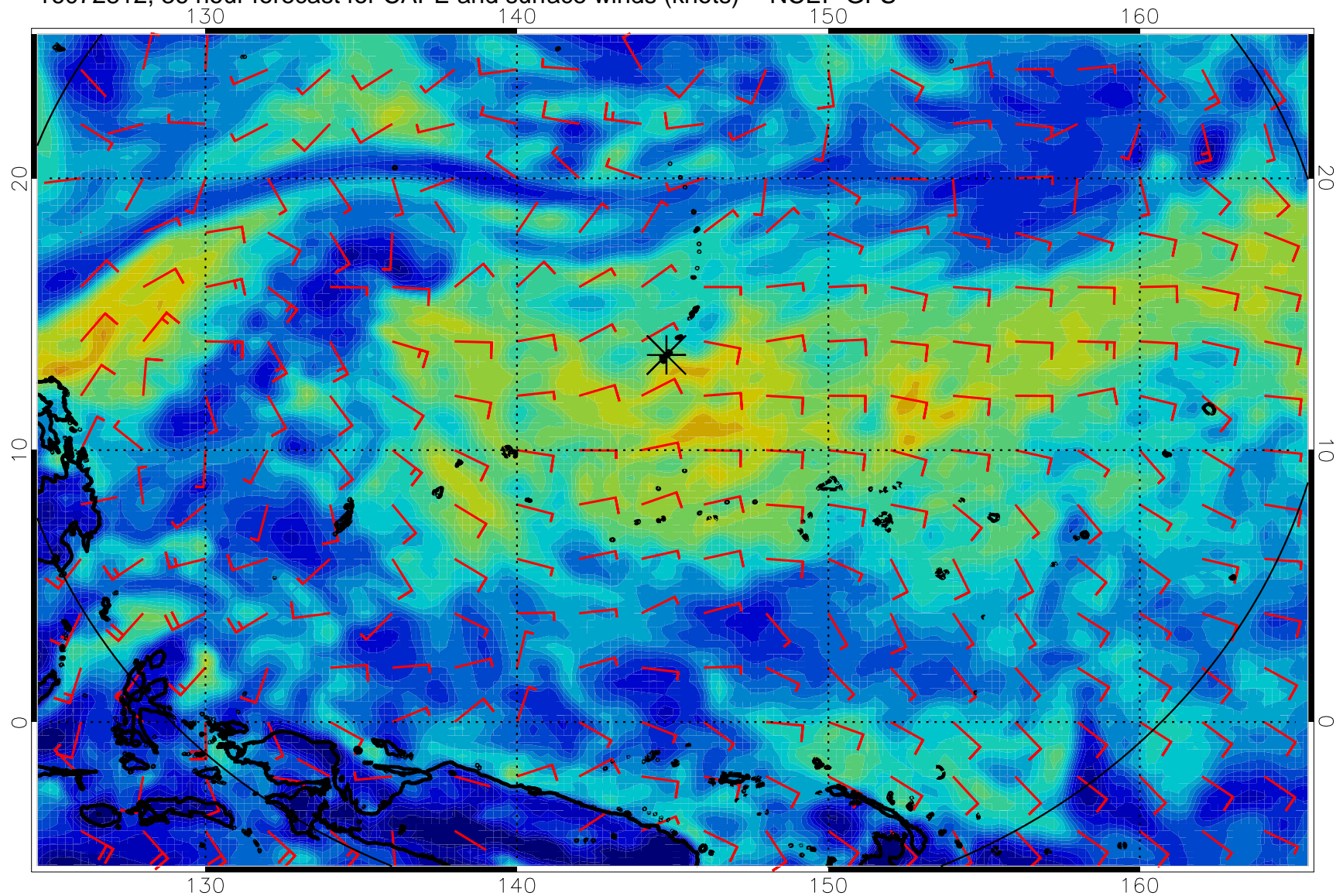
16072800, 24 hour forecast for CAPE and surface winds (knots) -- NCEP GFS



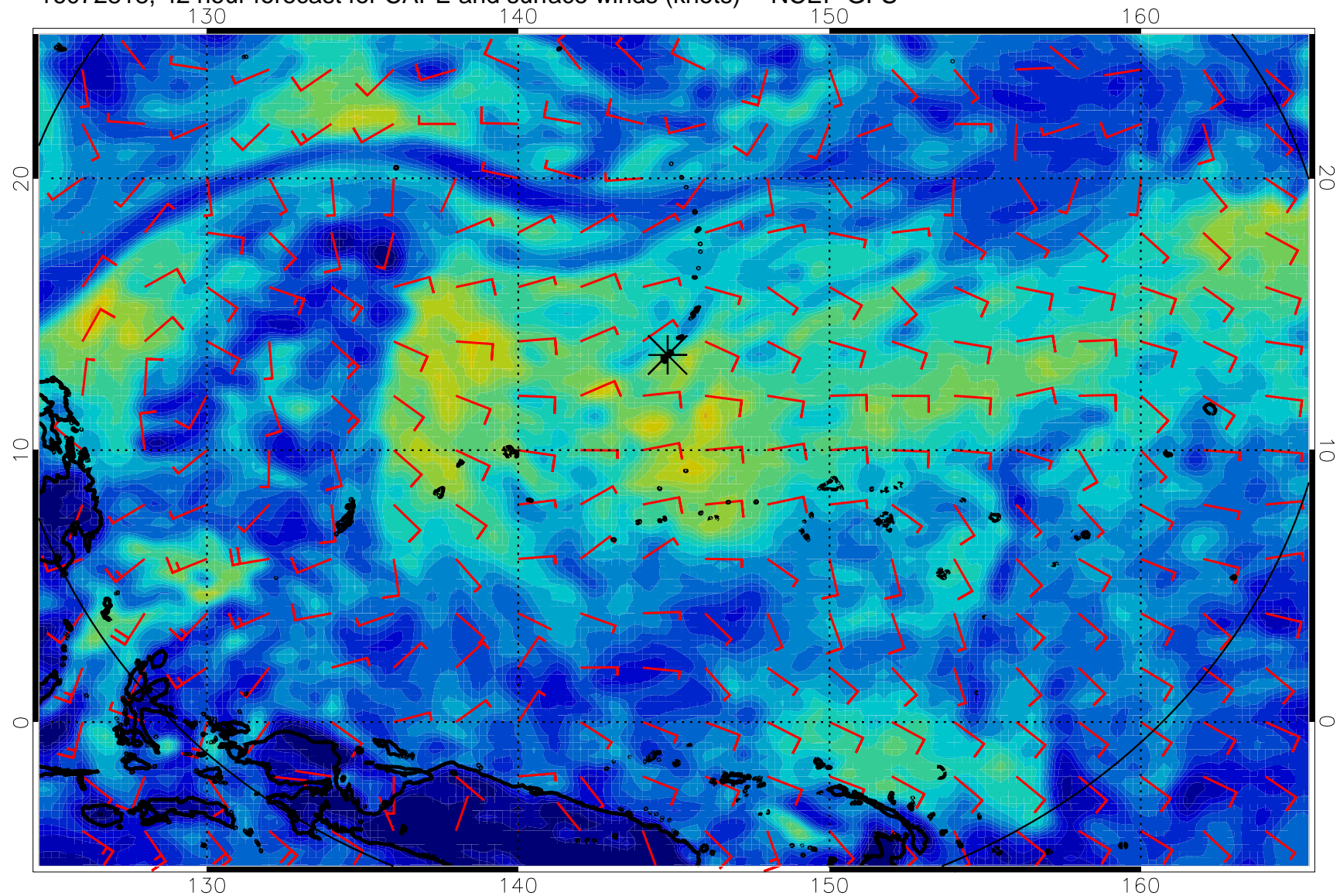
16072806, 30 hour forecast for CAPE and surface winds (knots) -- NCEP GFS



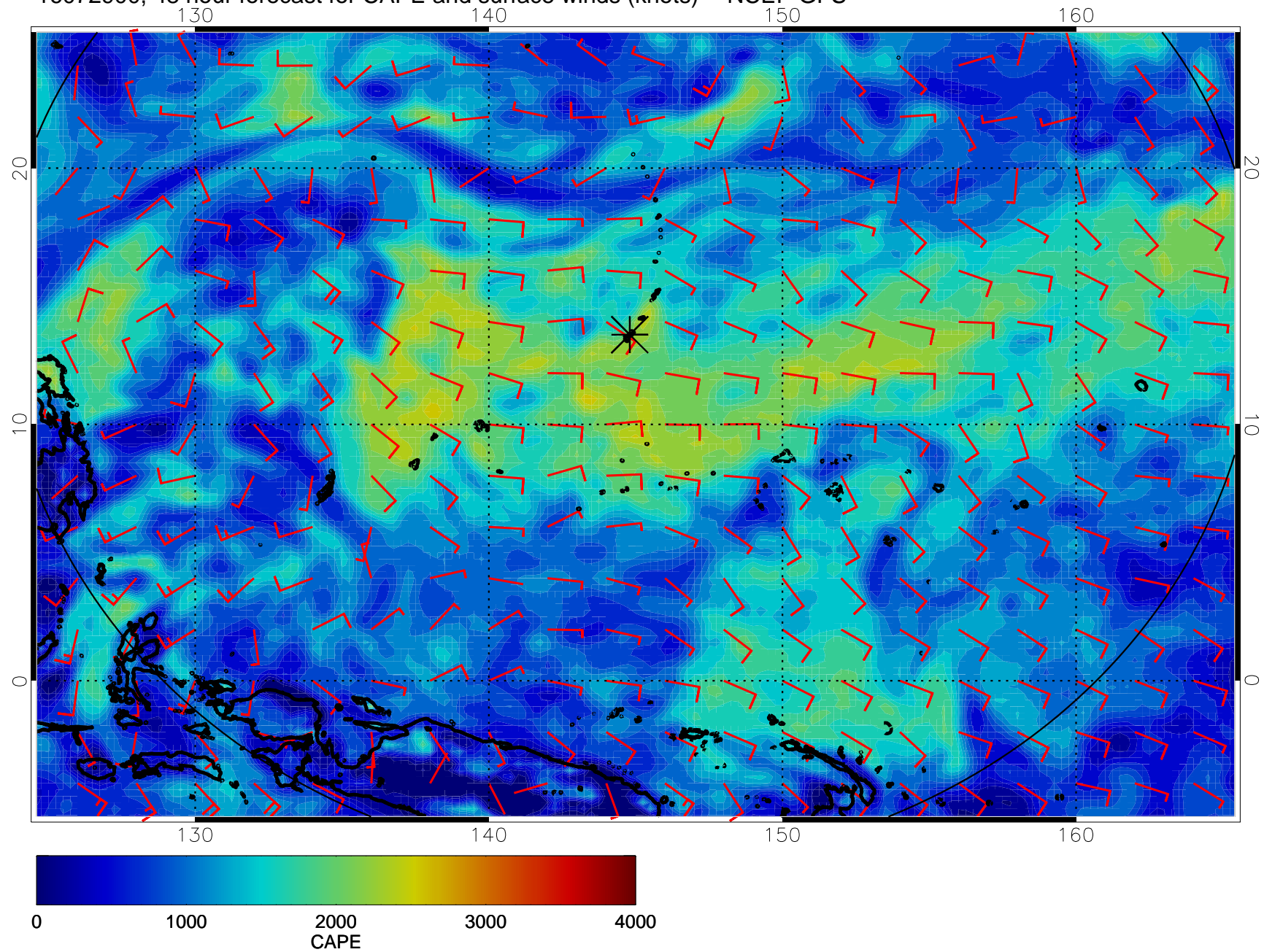
16072812, 36 hour forecast for CAPE and surface winds (knots) -- NCEP GFS



16072818, 42 hour forecast for CAPE and surface winds (knots) -- NCEP GFS

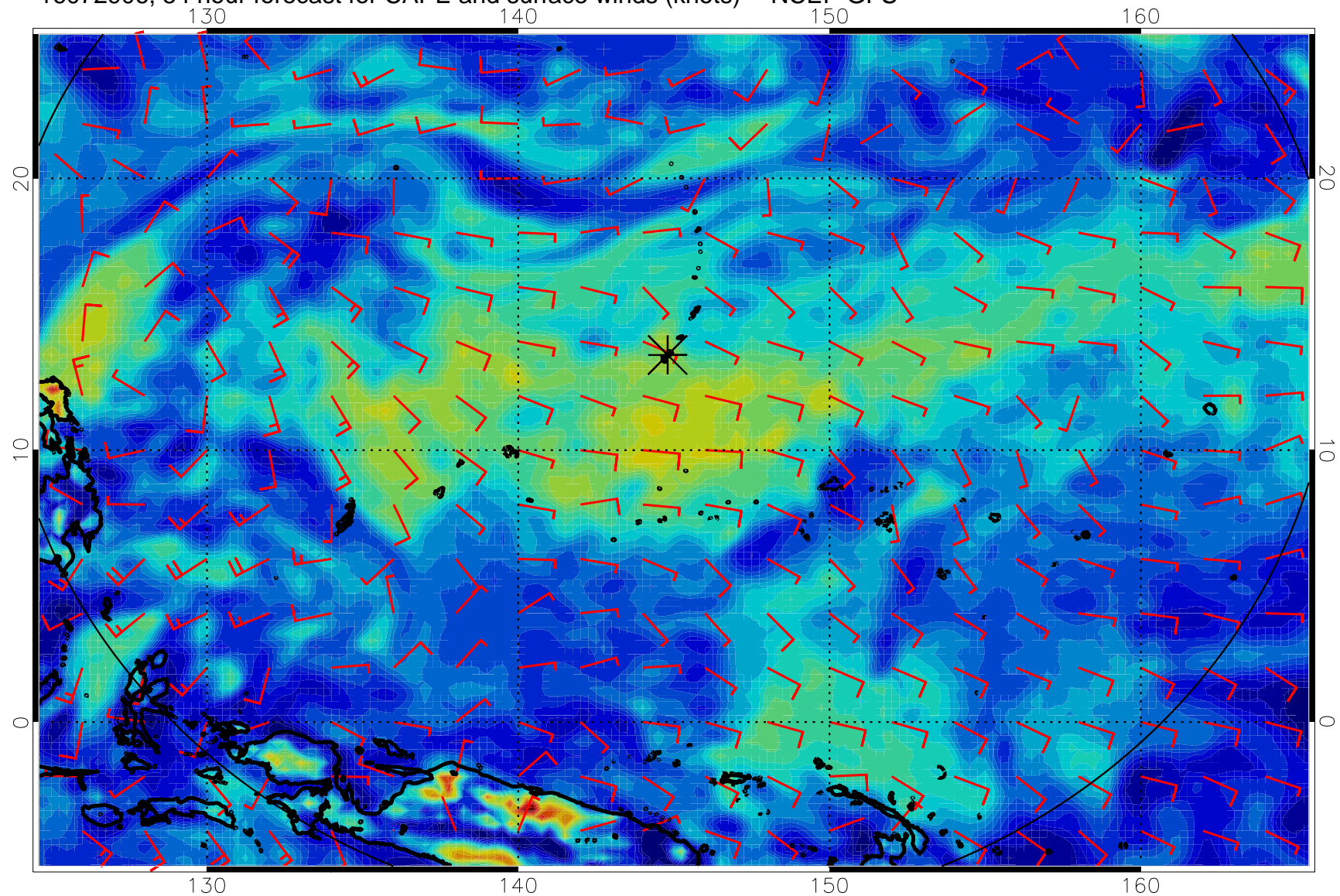


16072900, 48 hour forecast for CAPE and surface winds (knots) -- NCEP GFS

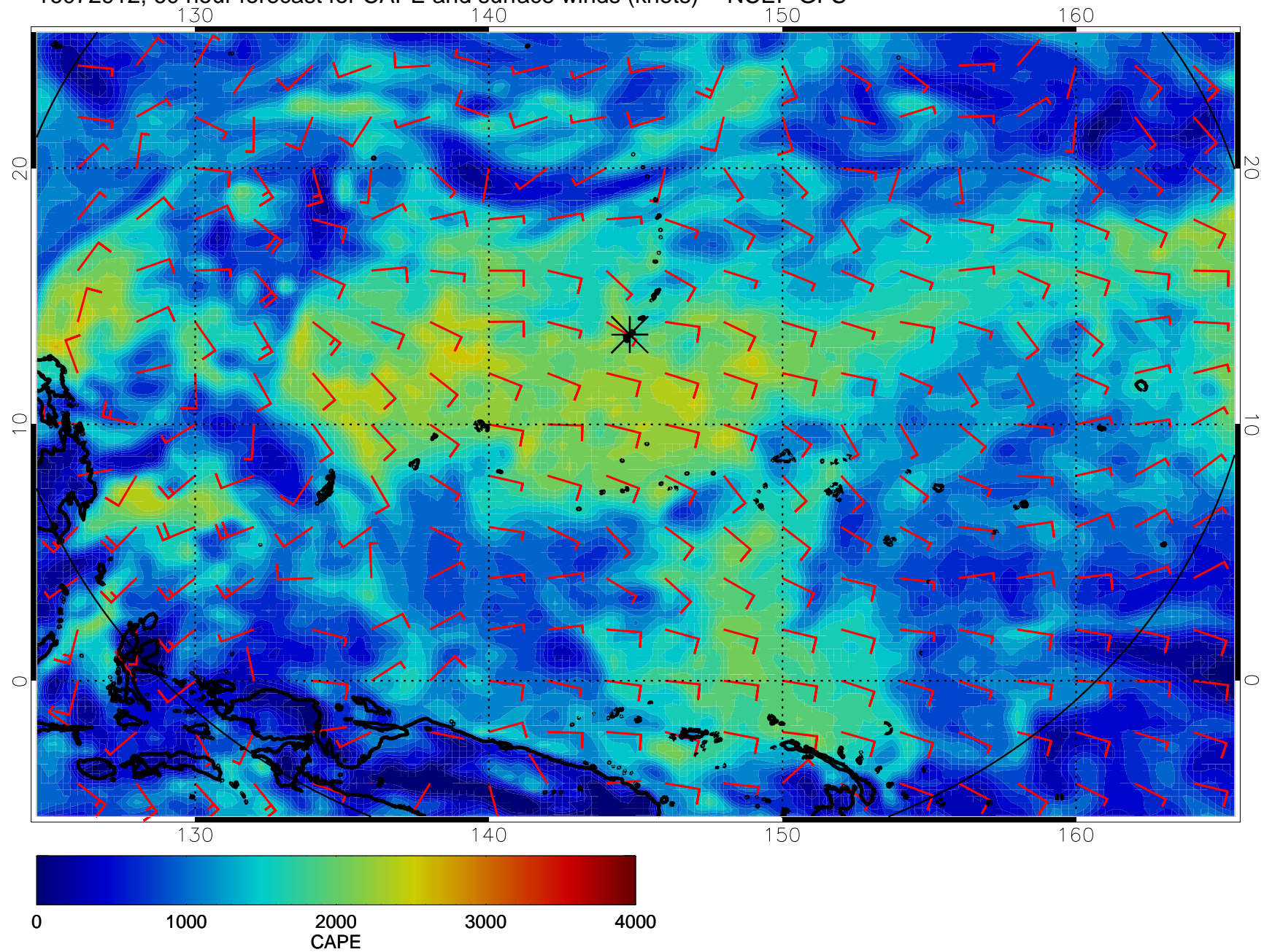




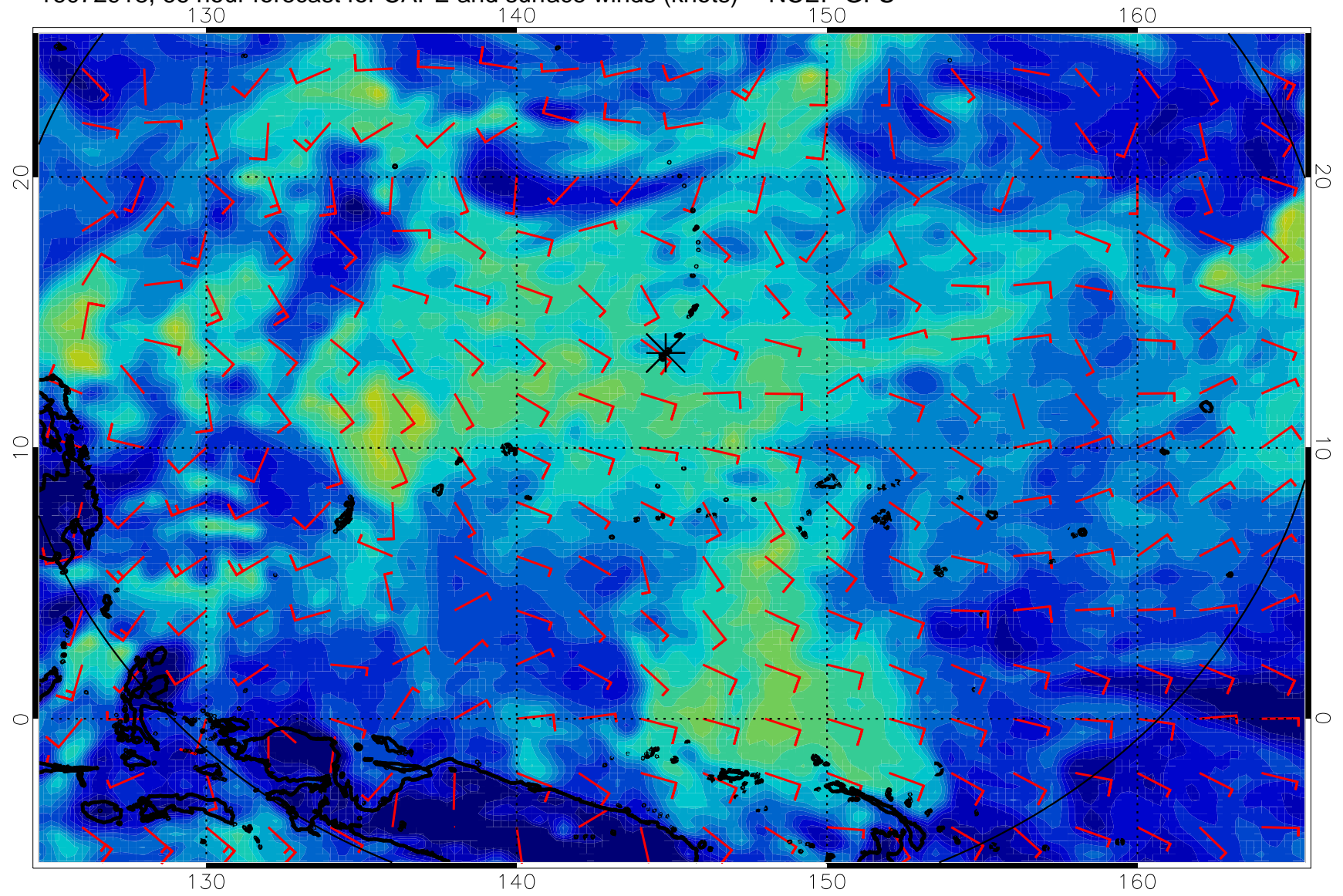
16072906, 54 hour forecast for CAPE and surface winds (knots) -- NCEP GFS



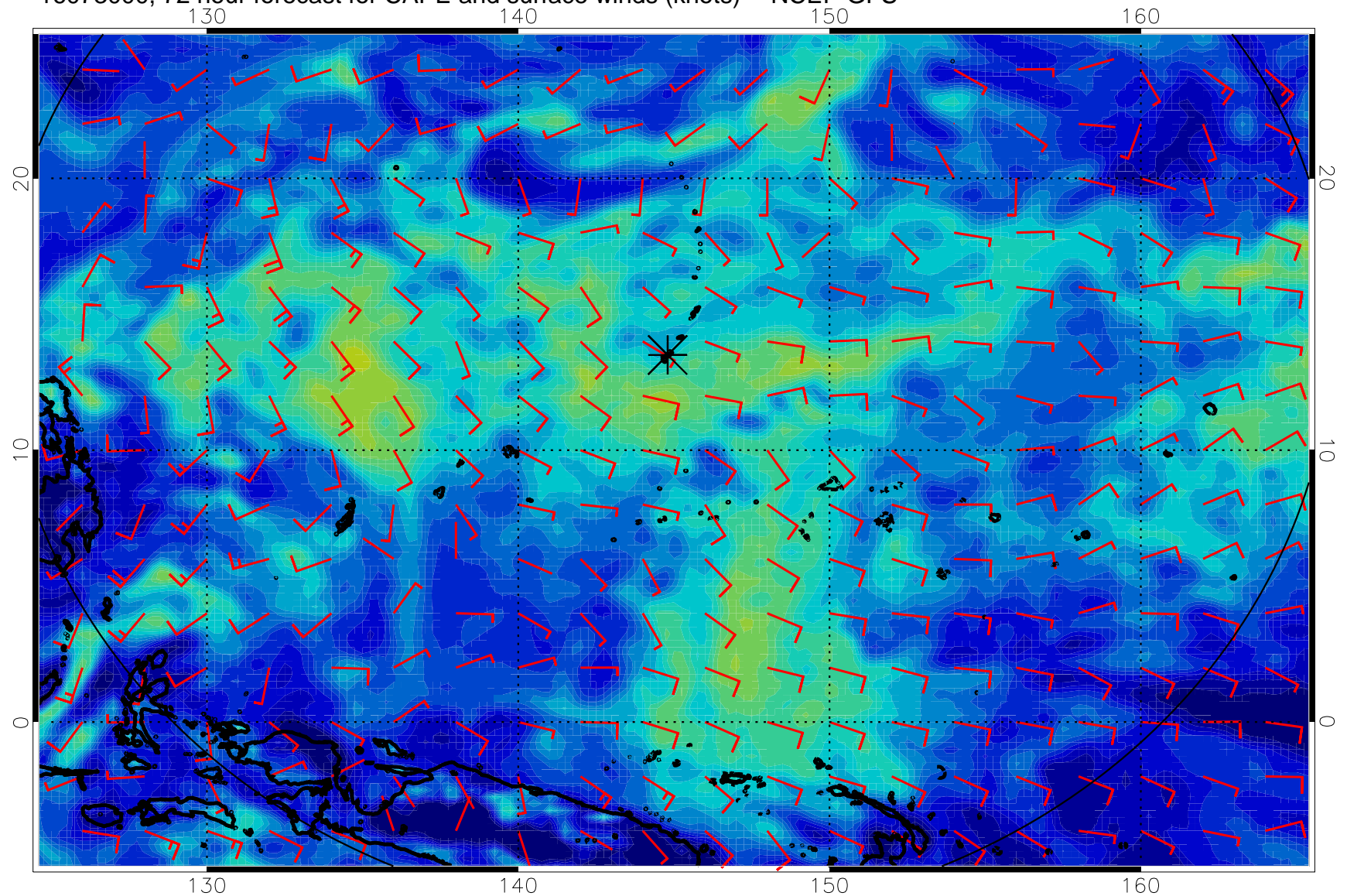
16072912, 60 hour forecast for CAPE and surface winds (knots) -- NCEP GFS



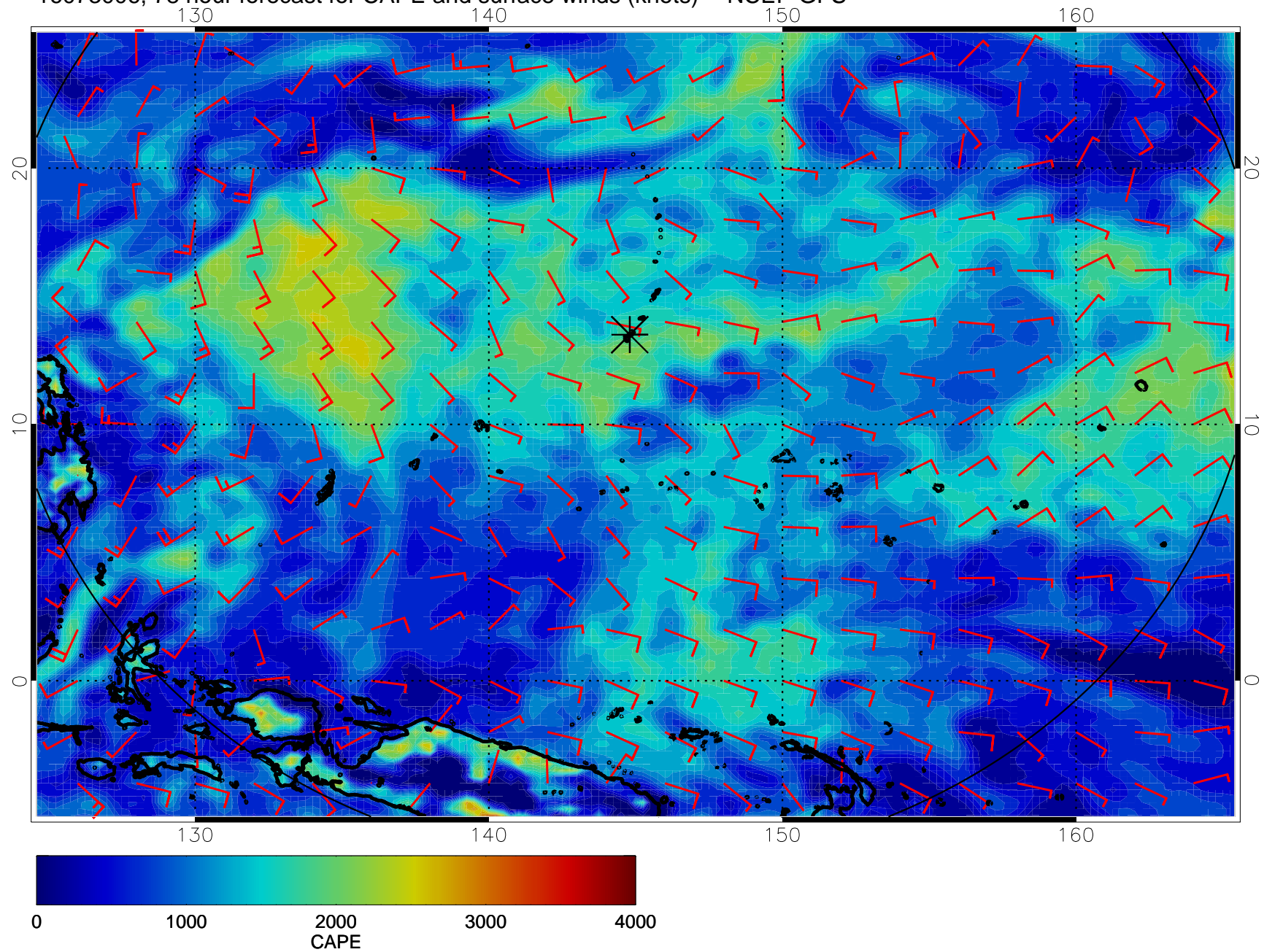
16072918, 66 hour forecast for CAPE and surface winds (knots) -- NCEP GFS



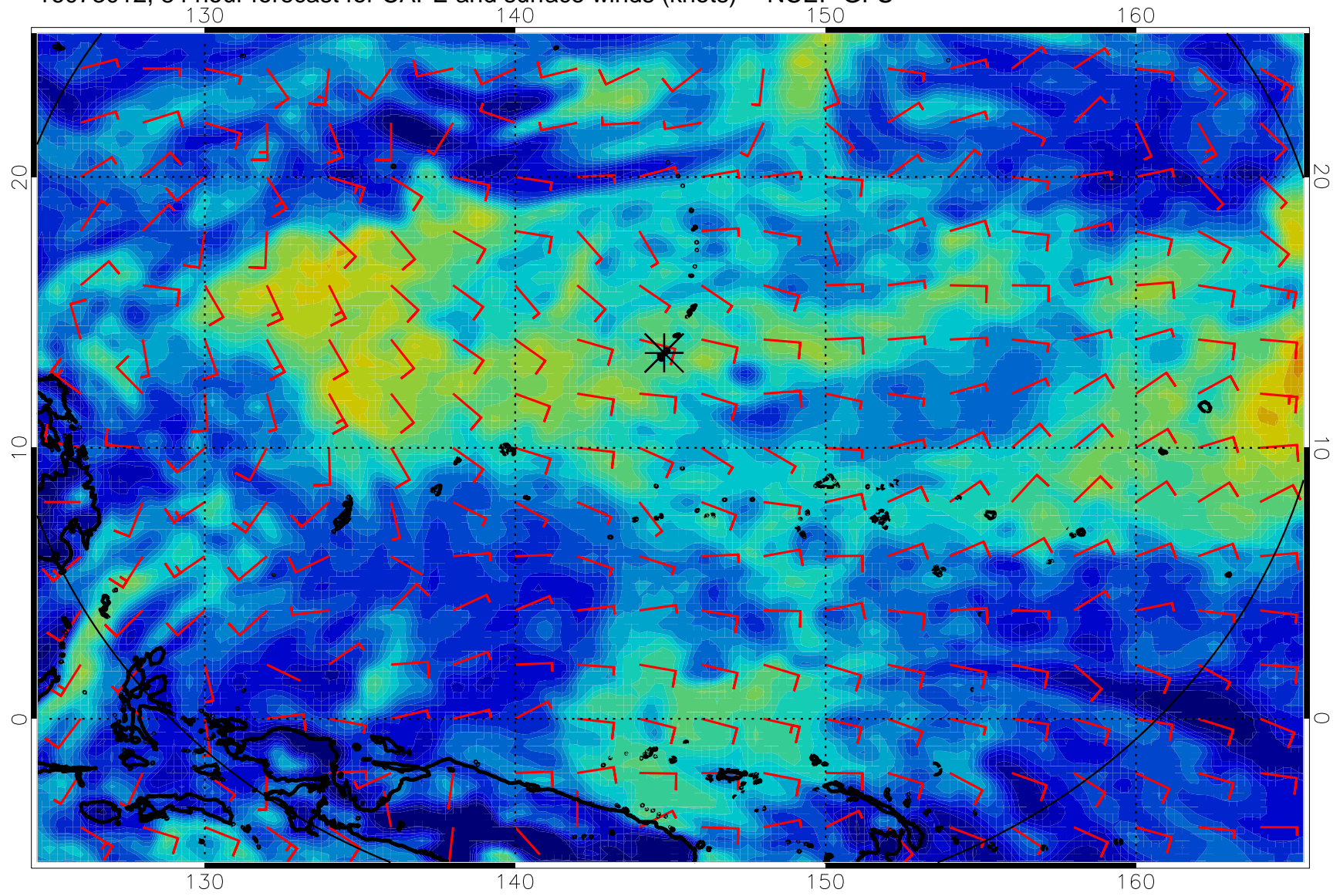
16073000, 72 hour forecast for CAPE and surface winds (knots) -- NCEP GFS



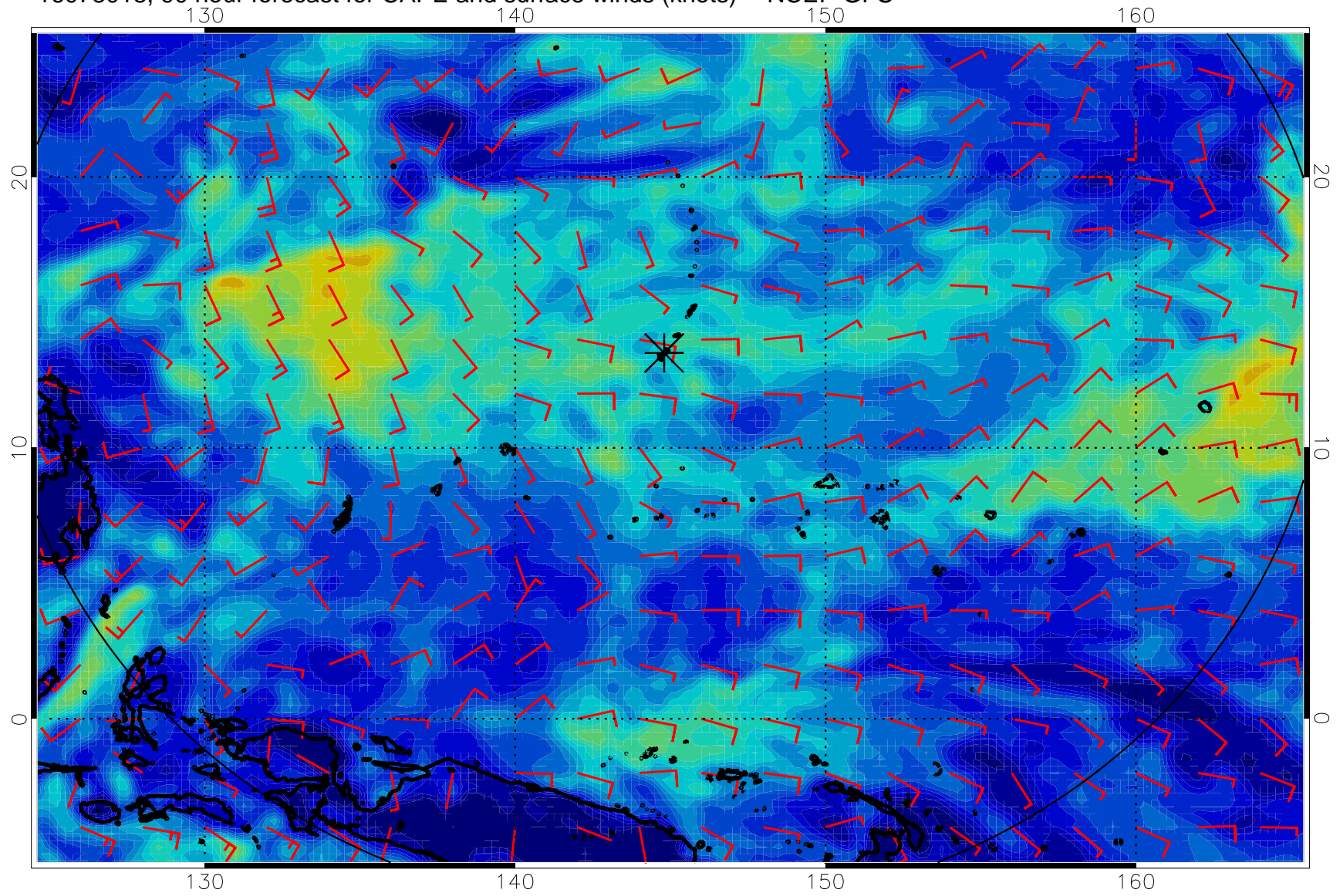
16073006, 78 hour forecast for CAPE and surface winds (knots) -- NCEP GFS



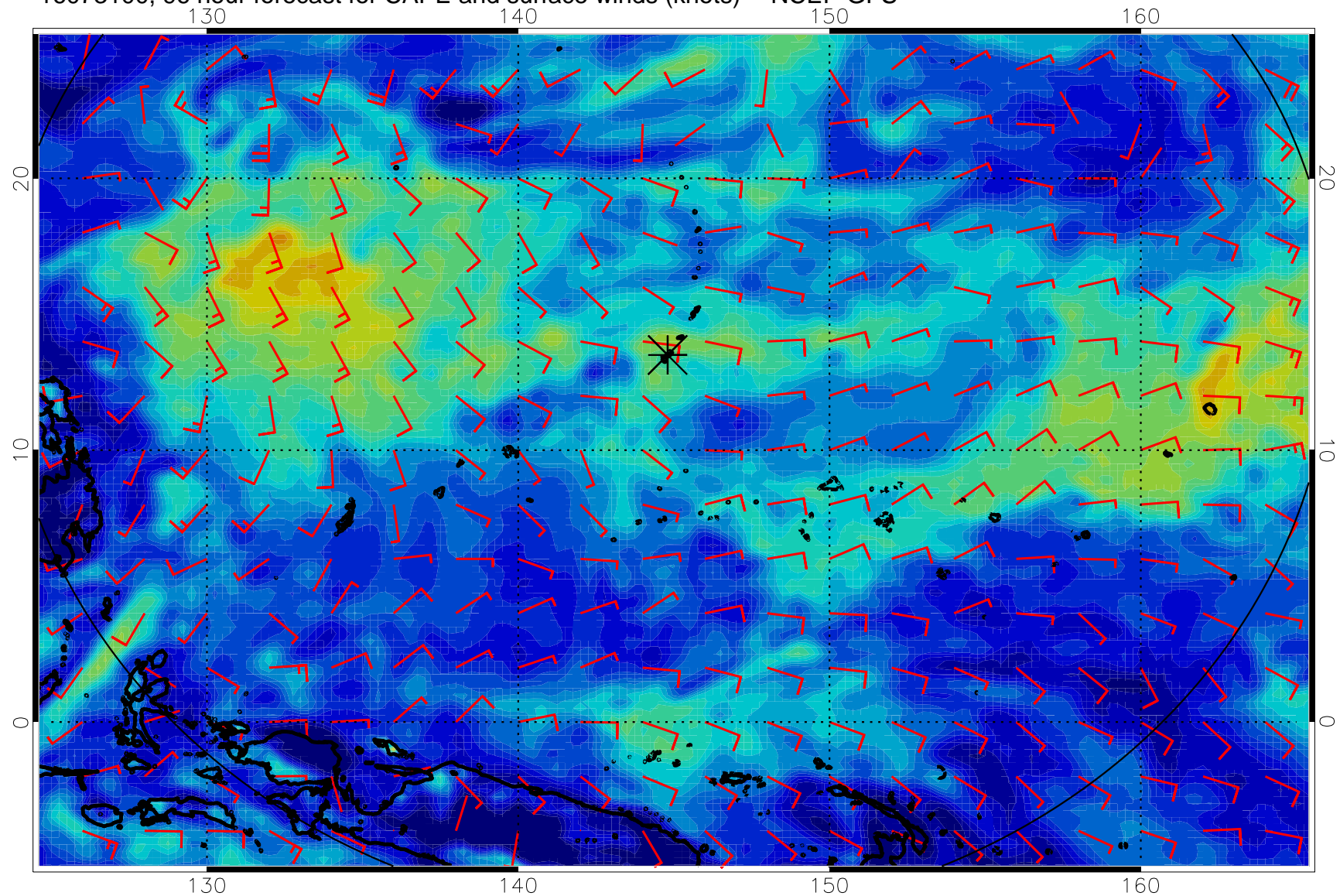
16073012, 84 hour forecast for CAPE and surface winds (knots) -- NCEP GFS



16073018, 90 hour forecast for CAPE and surface winds (knots) -- NCEP GFS

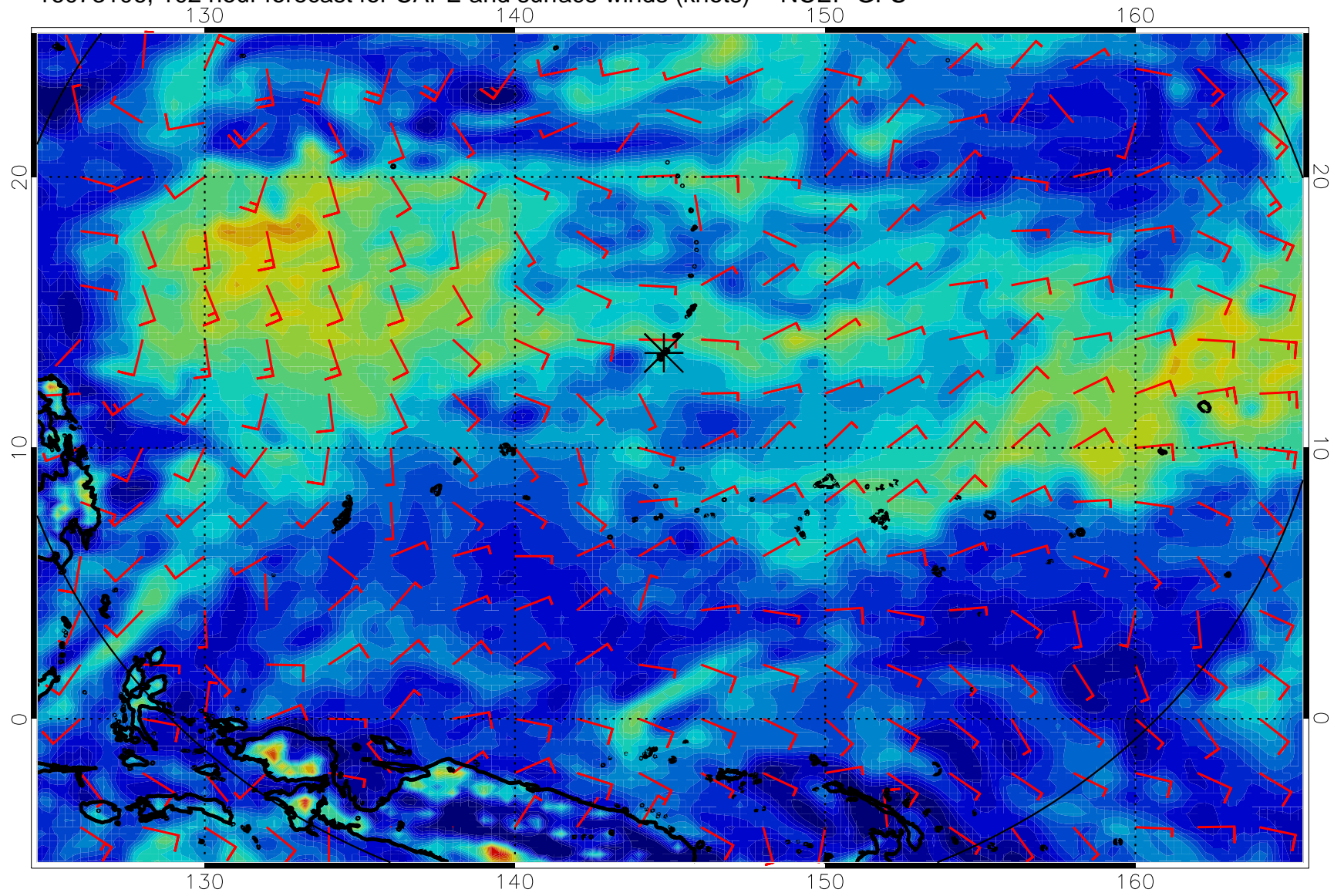


16073100, 96 hour forecast for CAPE and surface winds (knots) -- NCEP GFS

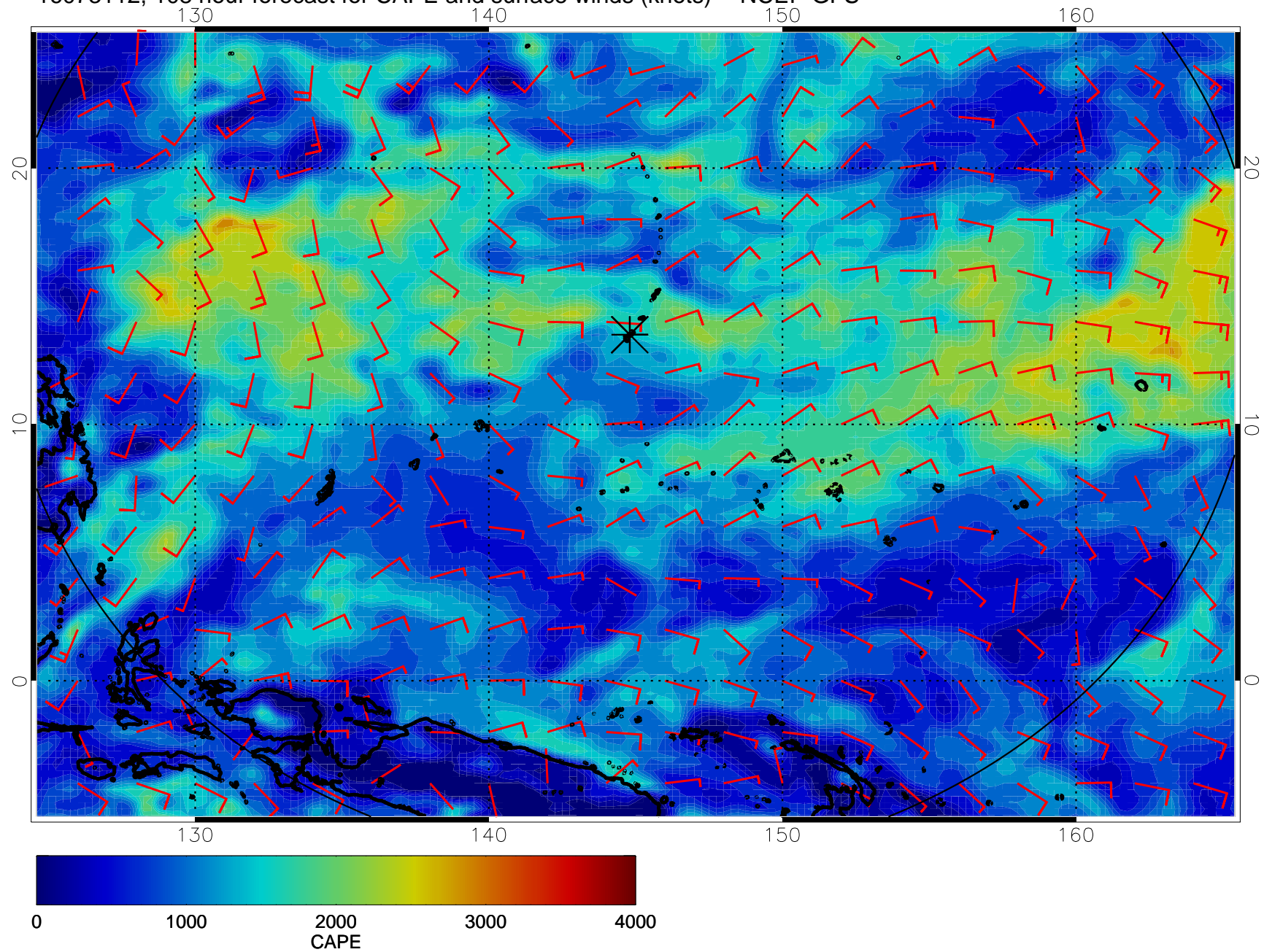




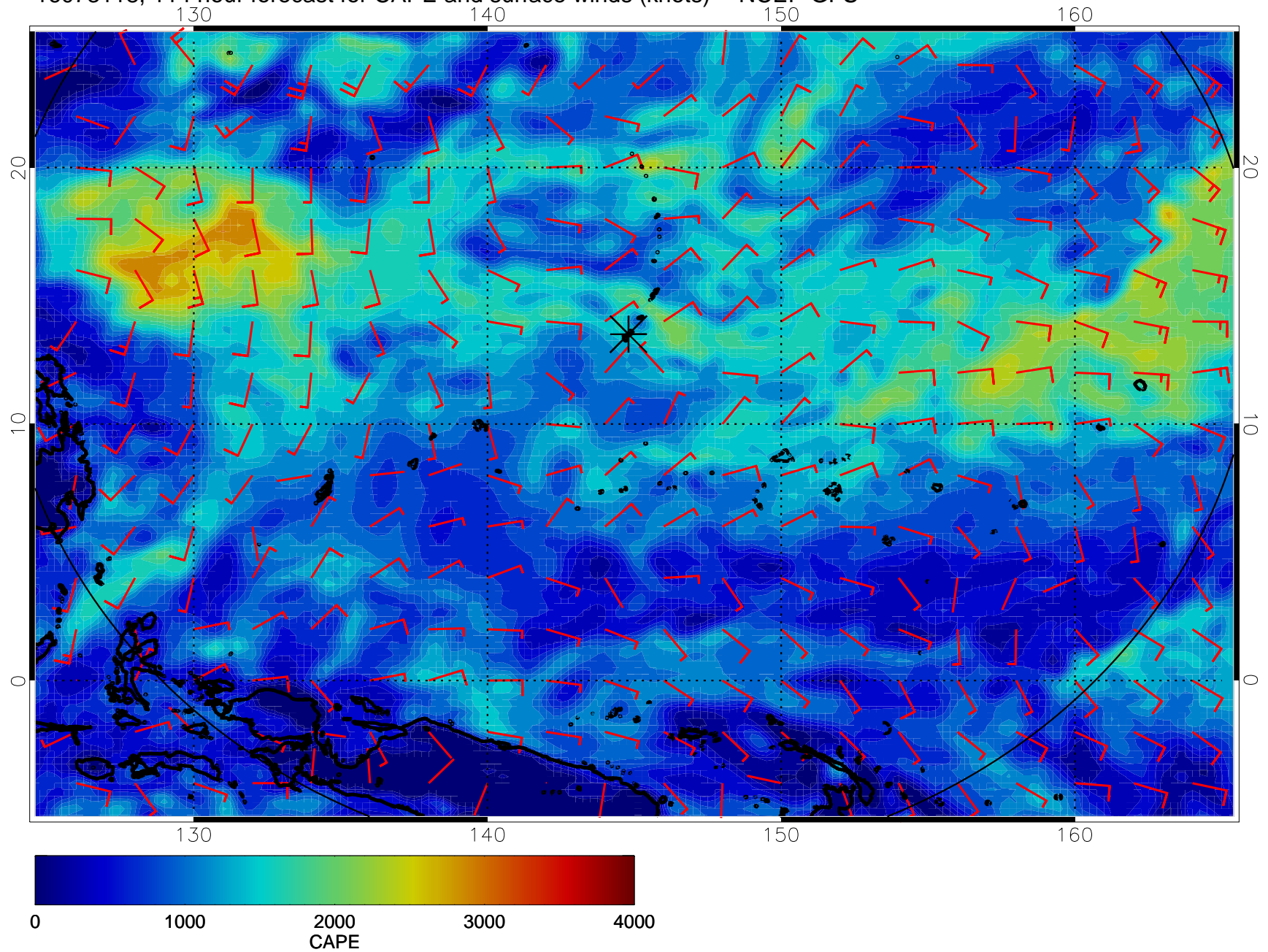
16073106, 102 hour forecast for CAPE and surface winds (knots) -- NCEP GFS



16073112, 108 hour forecast for CAPE and surface winds (knots) -- NCEP GFS



16073118, 114 hour forecast for CAPE and surface winds (knots) -- NCEP GFS



16080100, 120 hour forecast for CAPE and surface winds (knots) -- NCEP GFS

