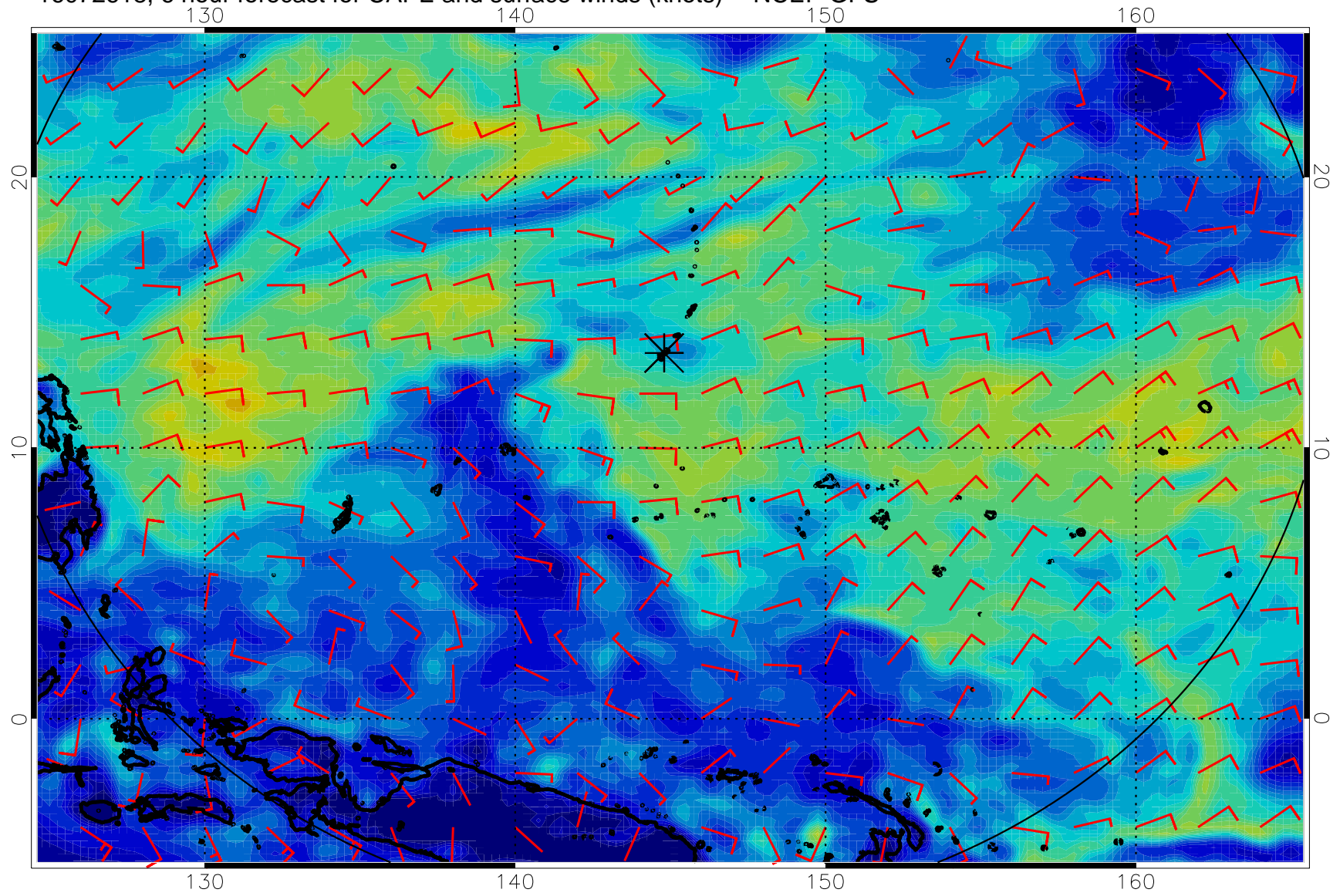
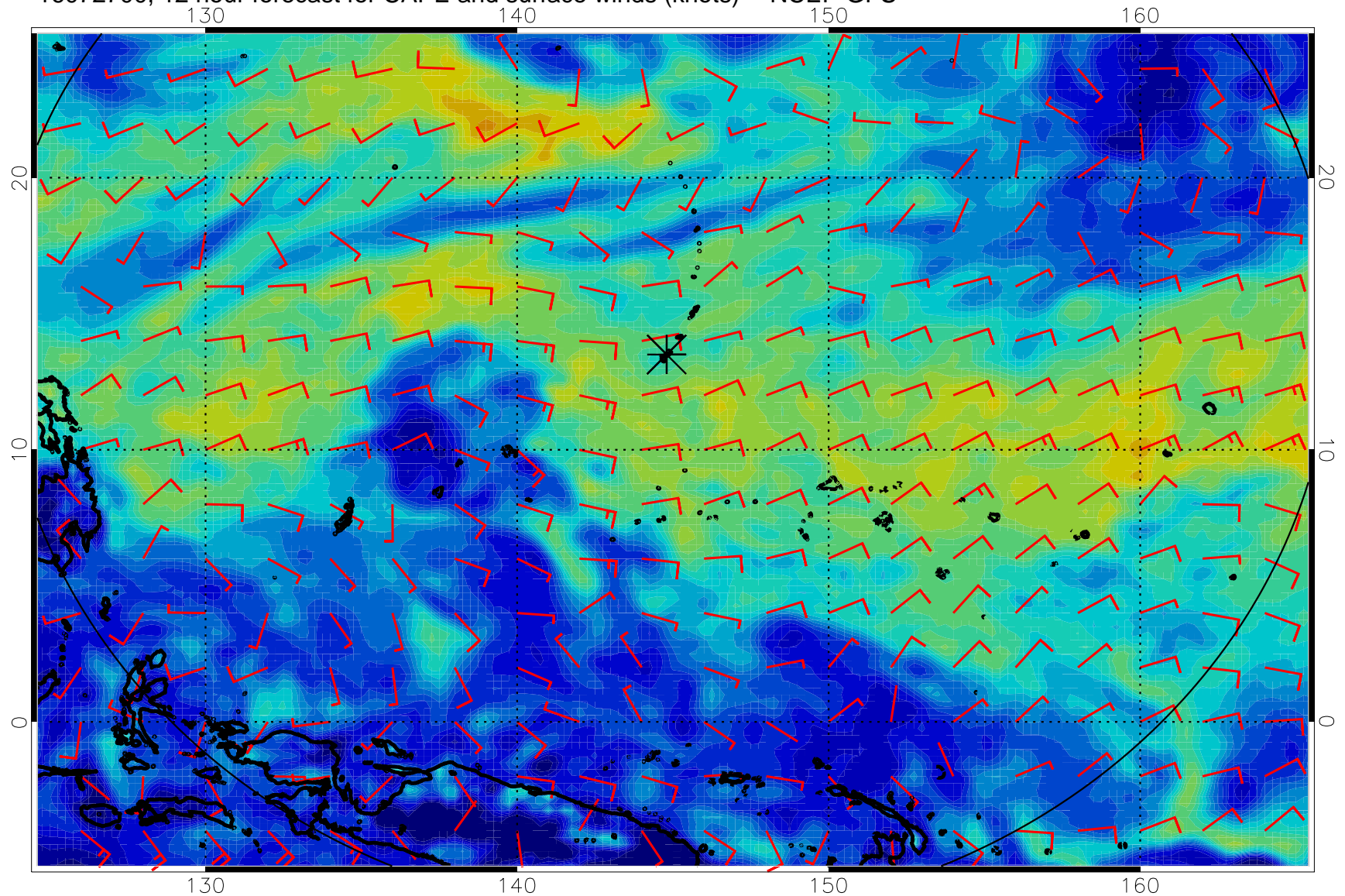


16072618, 6 hour forecast for CAPE and surface winds (knots) -- NCEP GFS

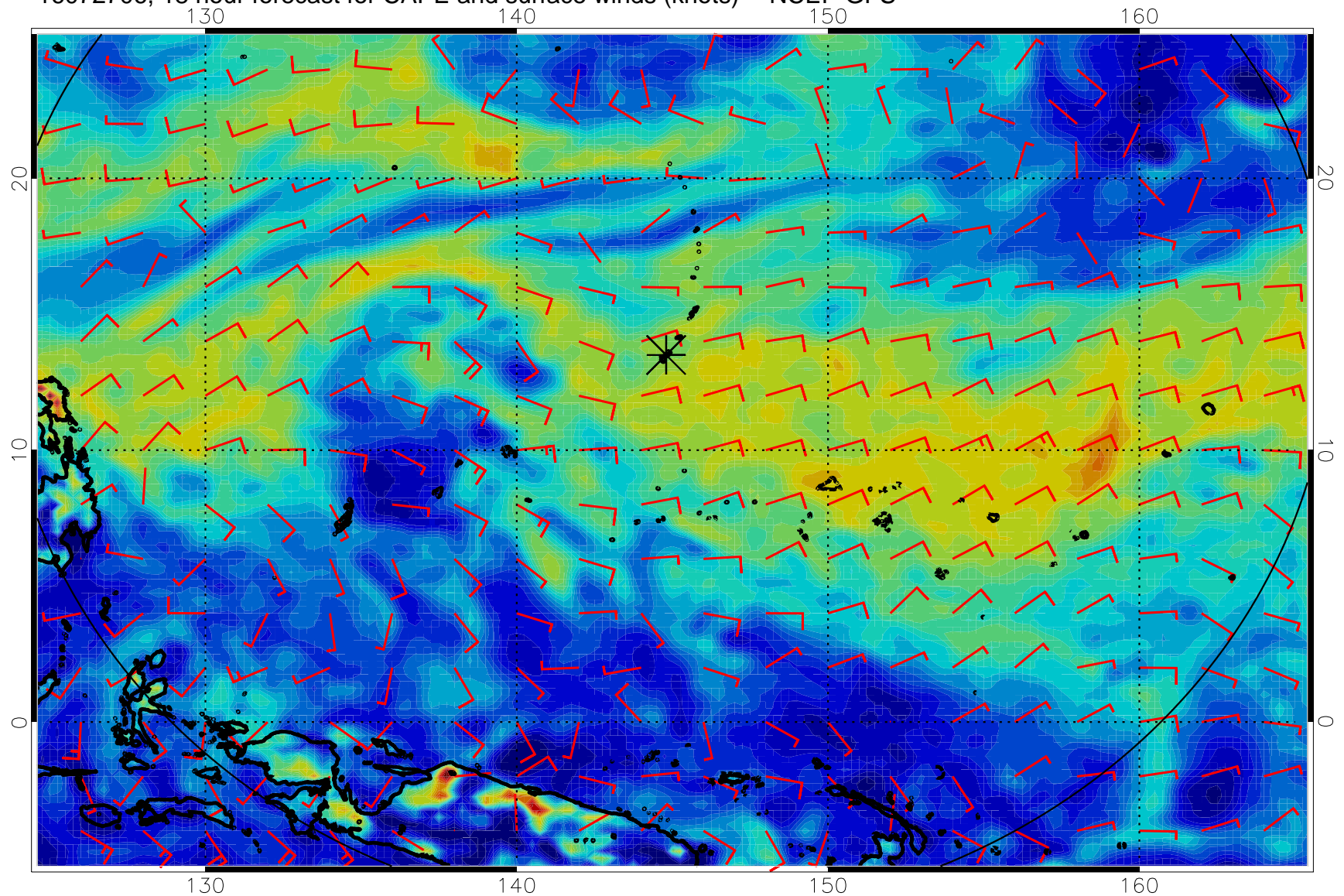


16072700, 12 hour forecast for CAPE and surface winds (knots) -- NCEP GFS

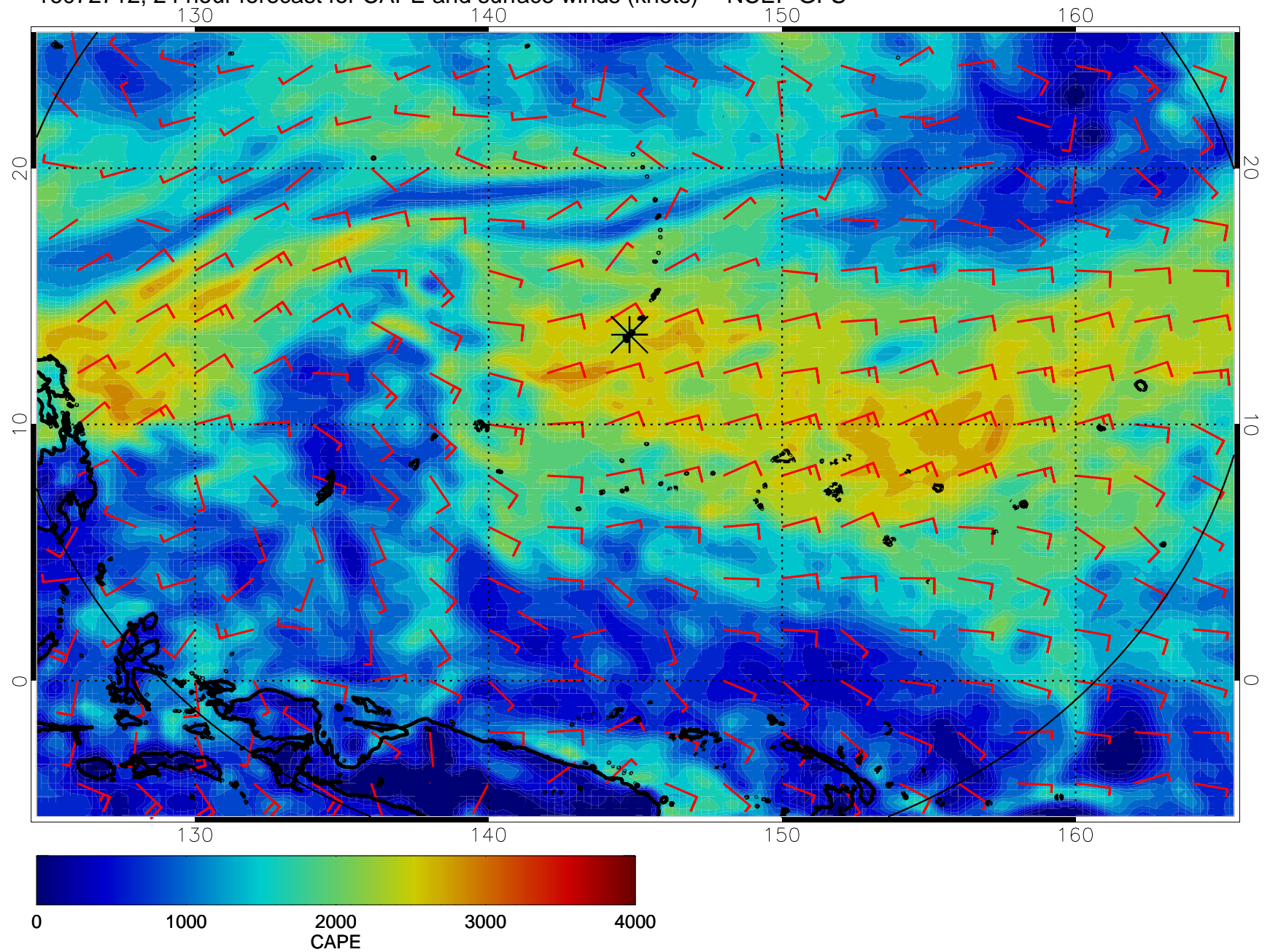




16072706, 18 hour forecast for CAPE and surface winds (knots) -- NCEP GFS

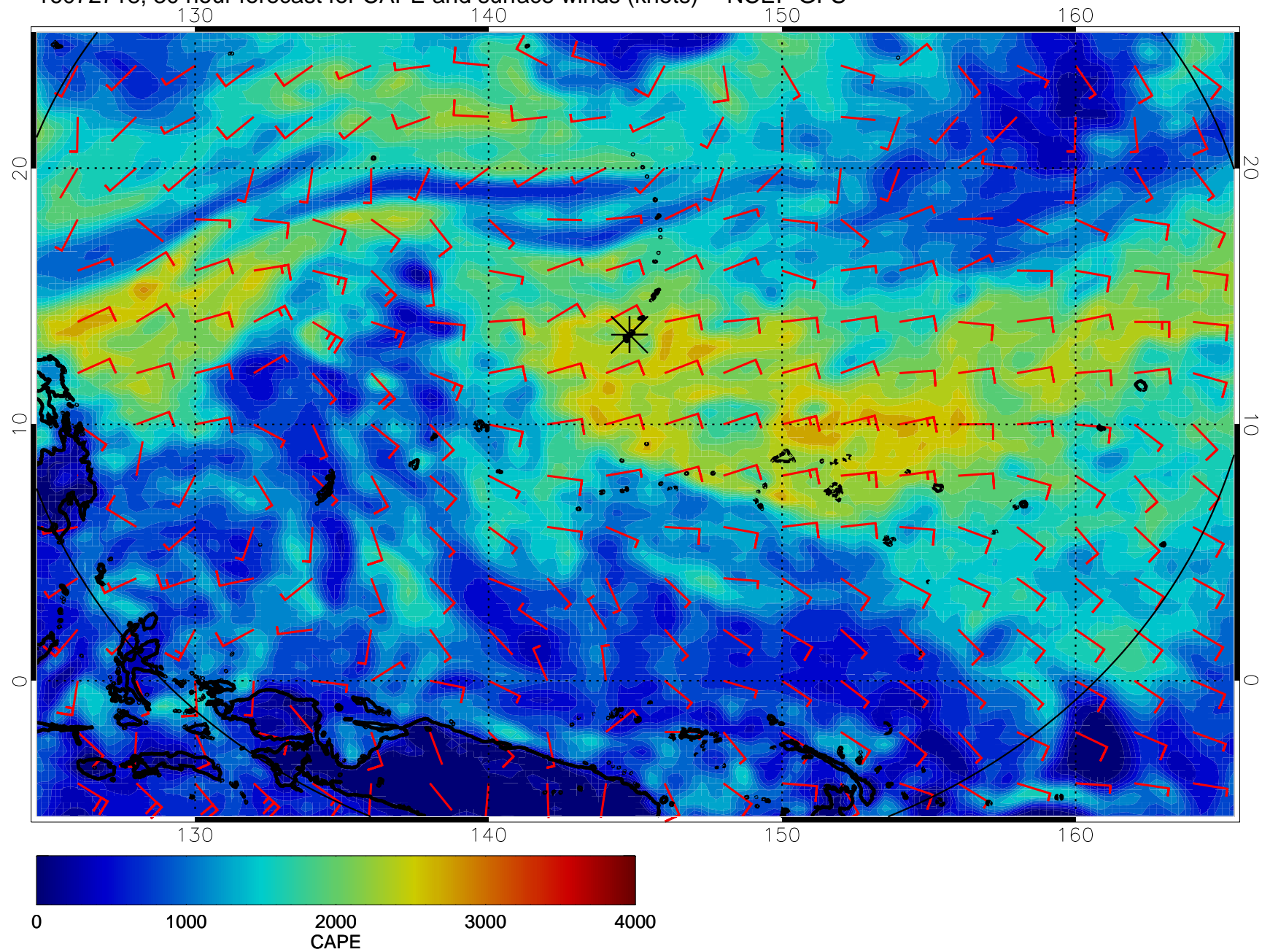


16072712, 24 hour forecast for CAPE and surface winds (knots) -- NCEP GFS

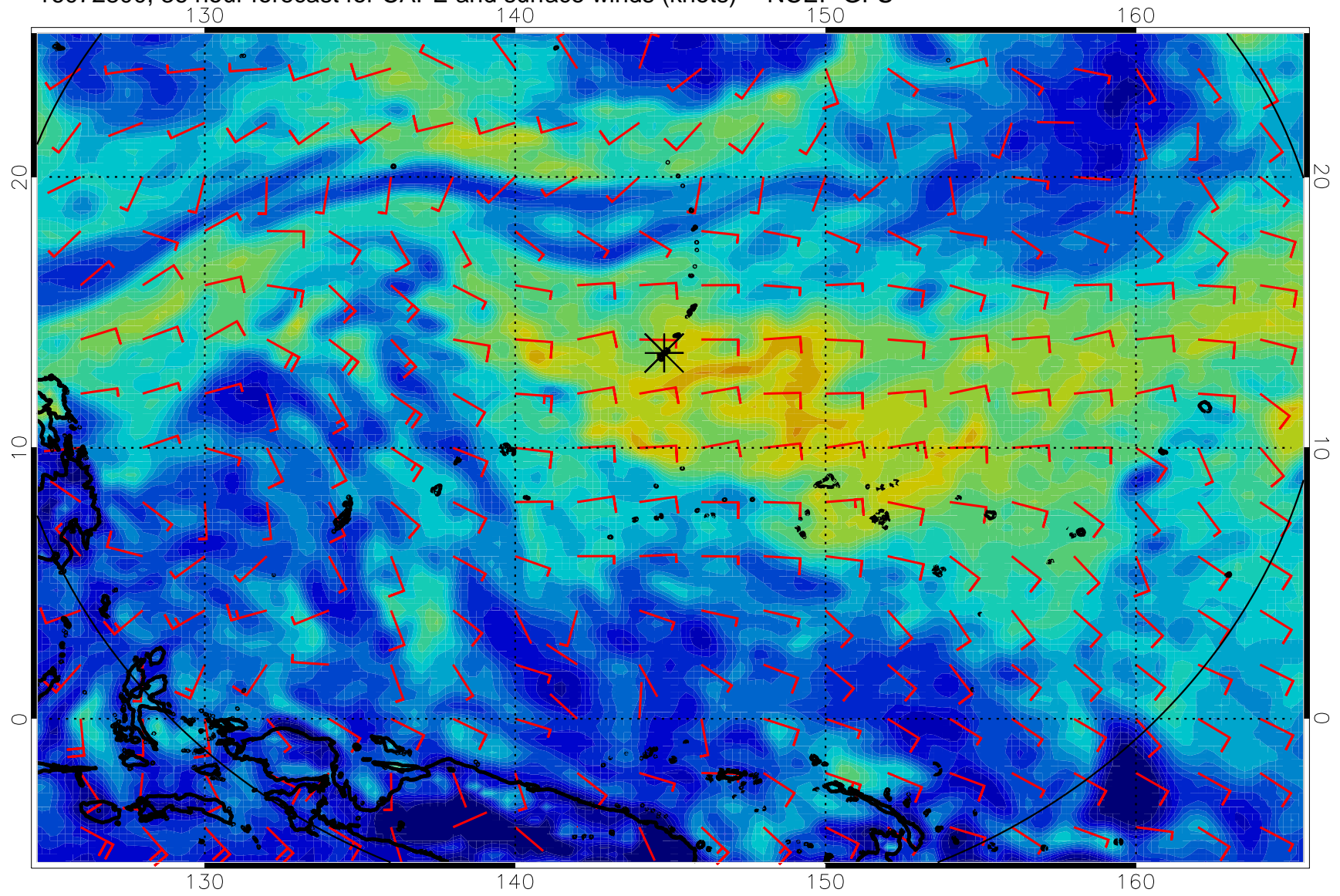




16072718, 30 hour forecast for CAPE and surface winds (knots) -- NCEP GFS

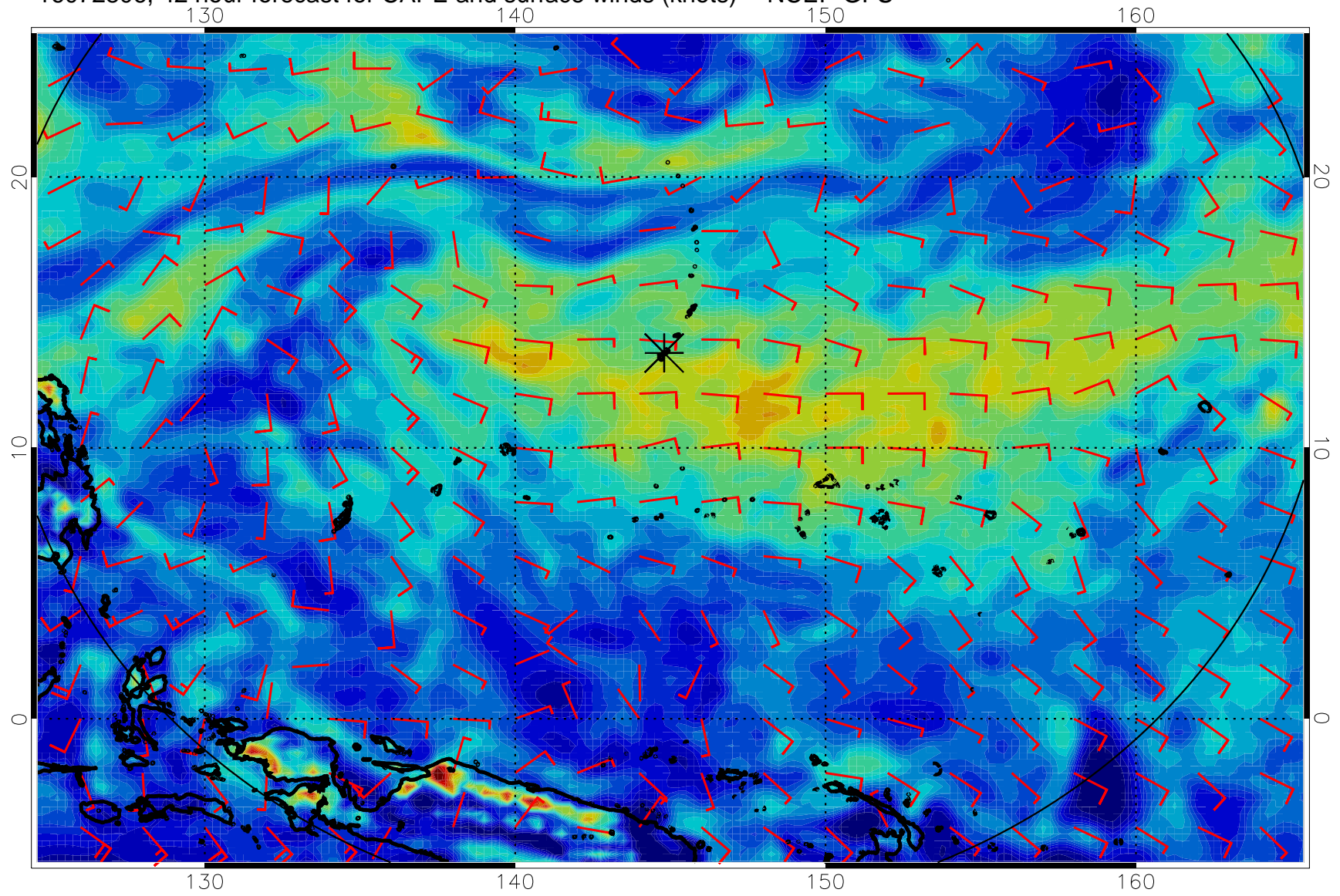


16072800, 36 hour forecast for CAPE and surface winds (knots) -- NCEP GFS

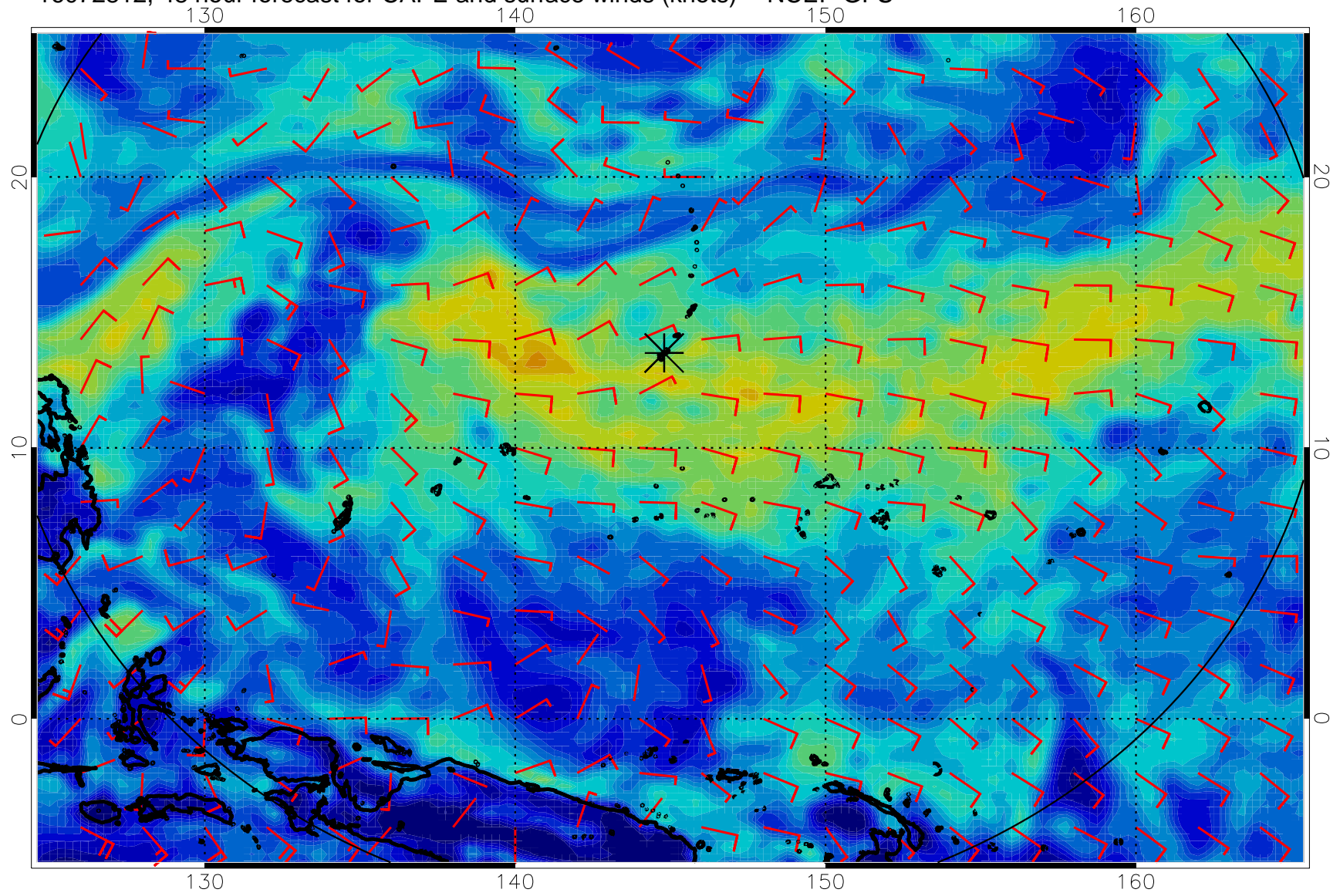




16072806, 42 hour forecast for CAPE and surface winds (knots) -- NCEP GFS

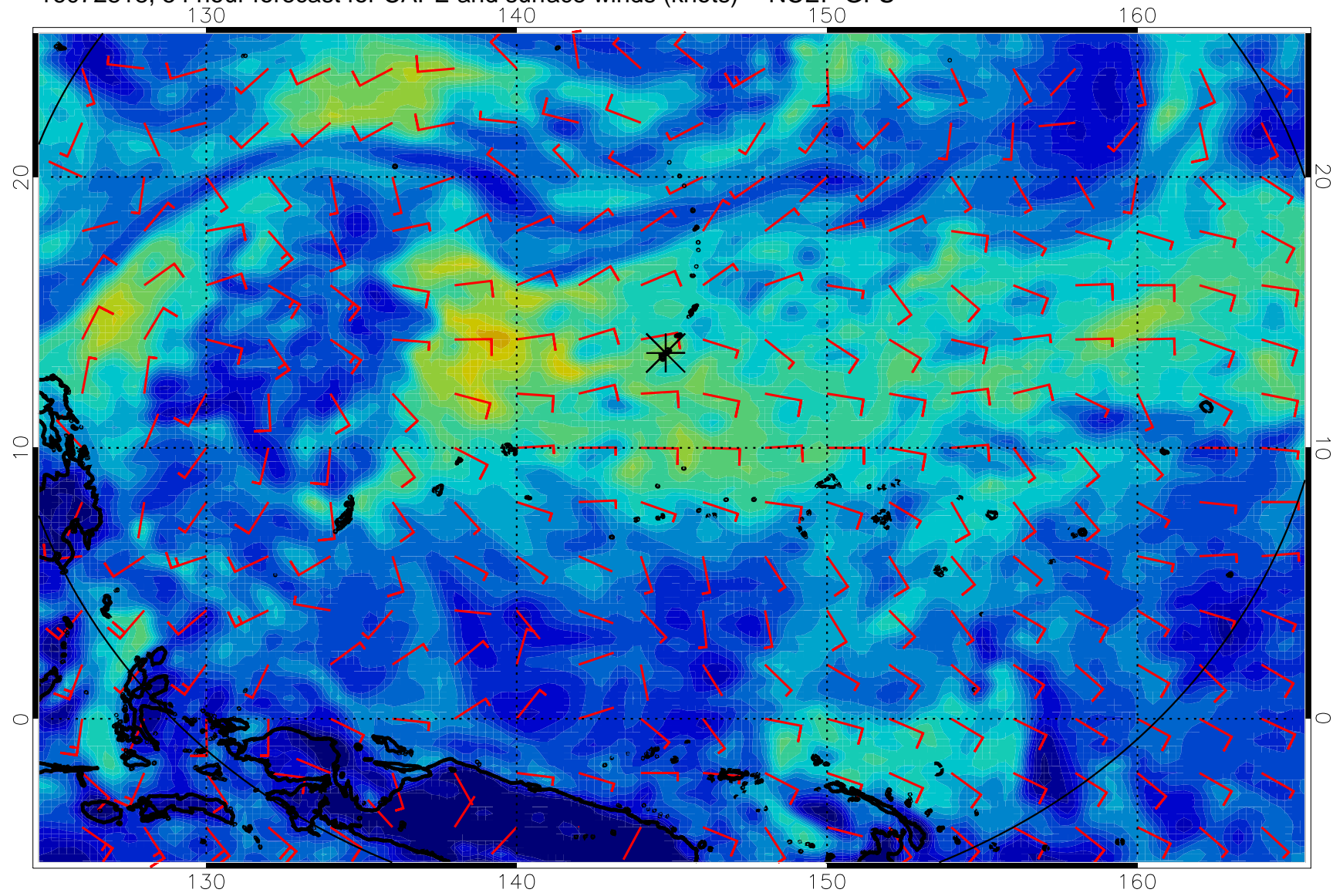


16072812, 48 hour forecast for CAPE and surface winds (knots) -- NCEP GFS

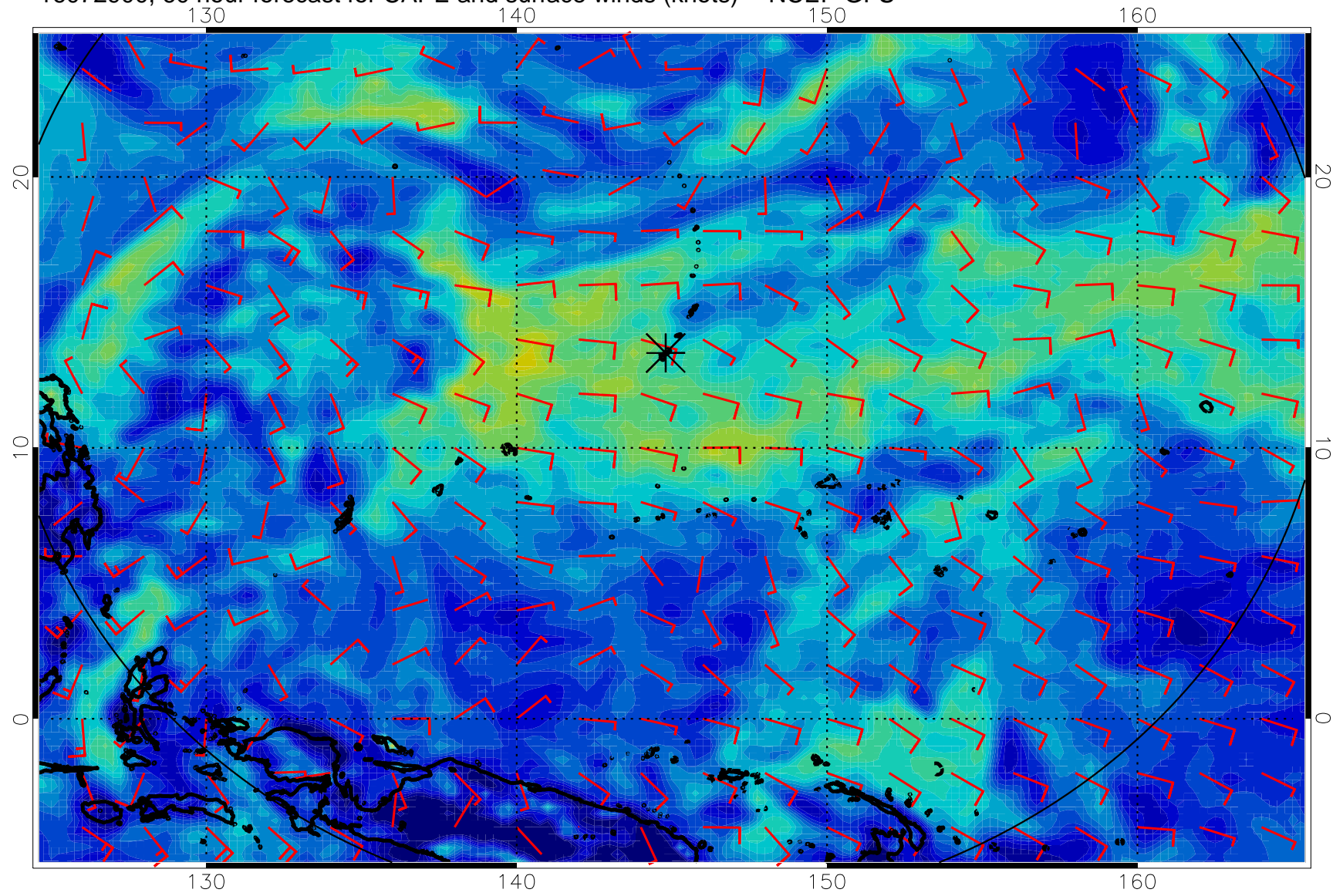




16072818, 54 hour forecast for CAPE and surface winds (knots) -- NCEP GFS

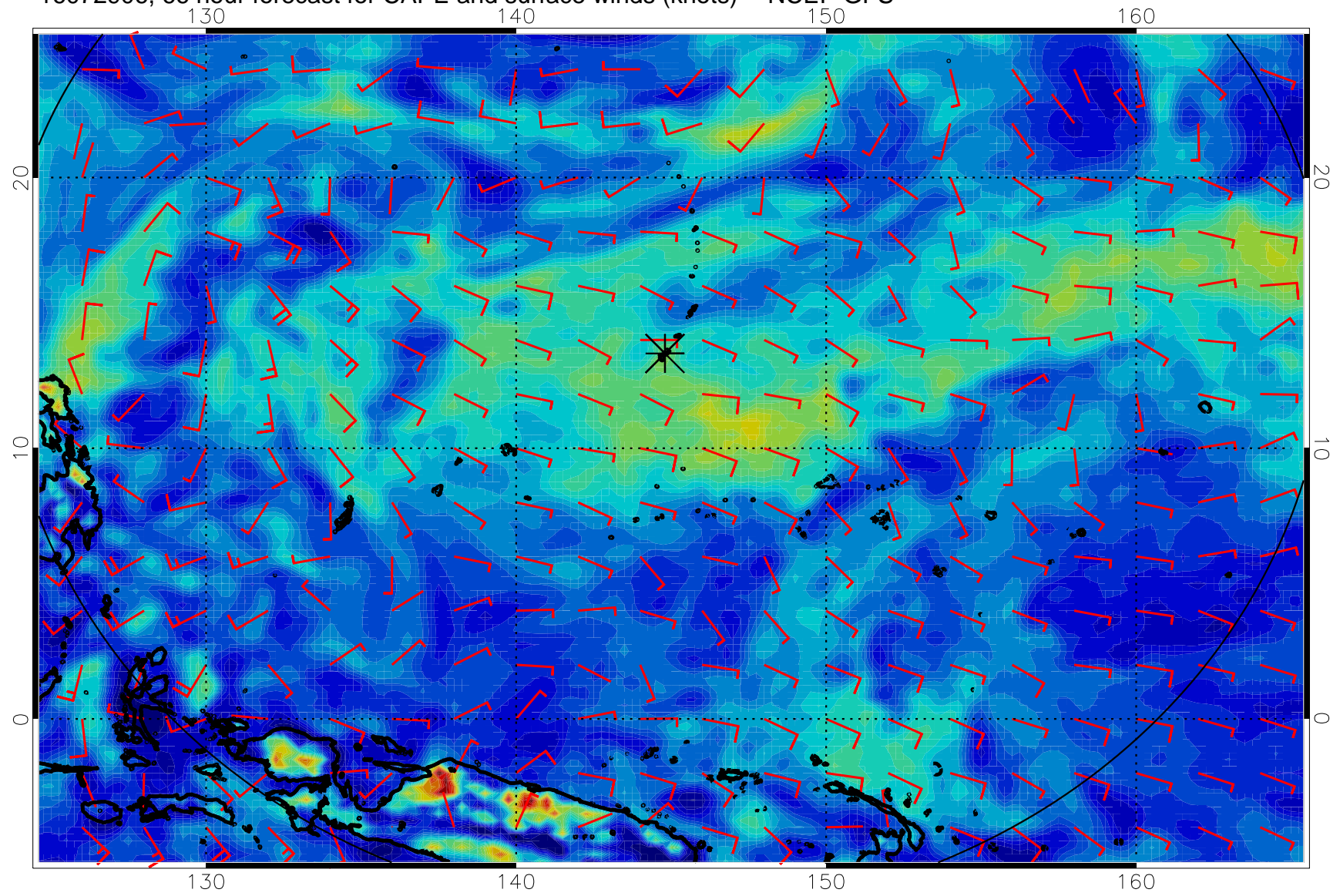


16072900, 60 hour forecast for CAPE and surface winds (knots) -- NCEP GFS

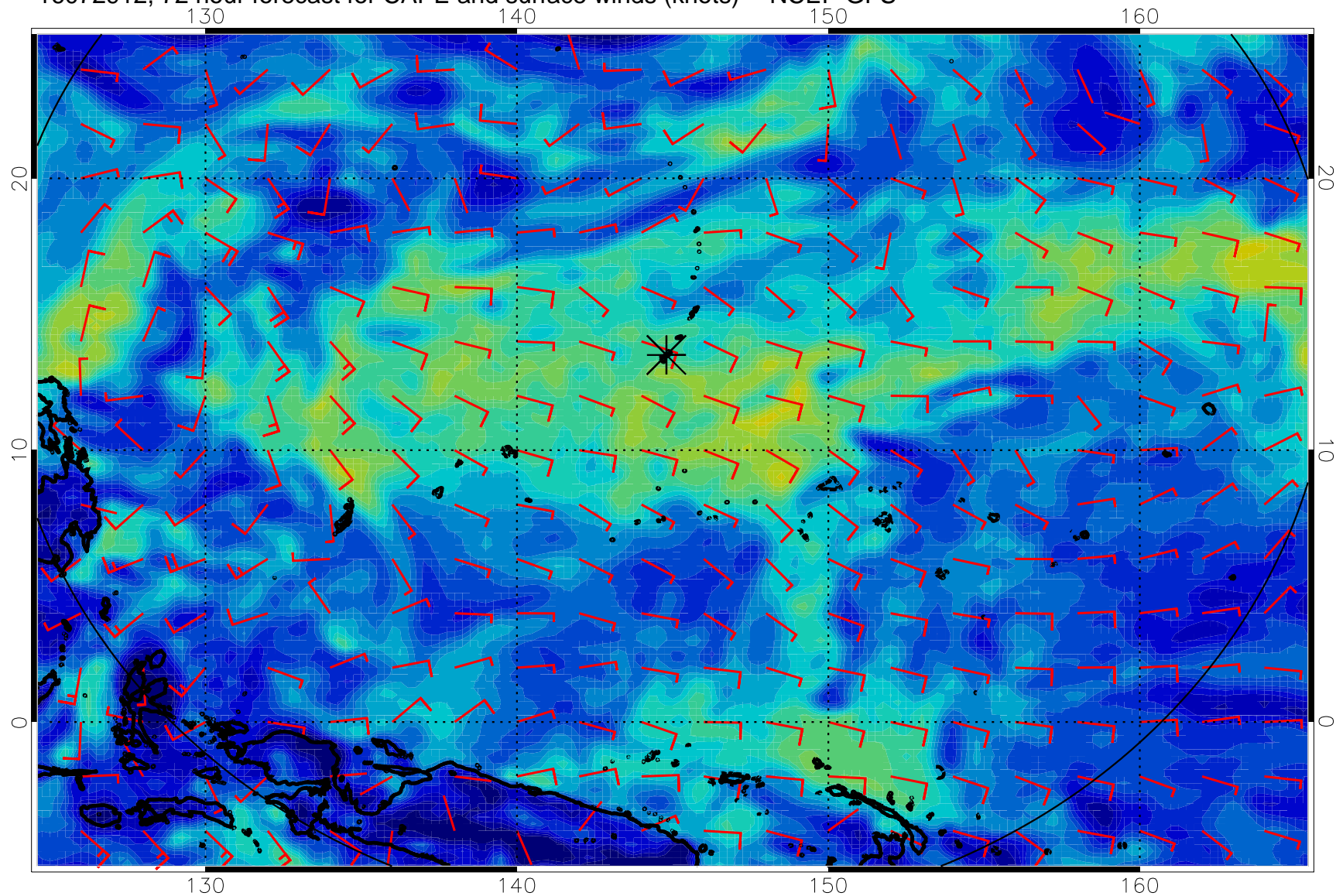




16072906, 66 hour forecast for CAPE and surface winds (knots) -- NCEP GFS

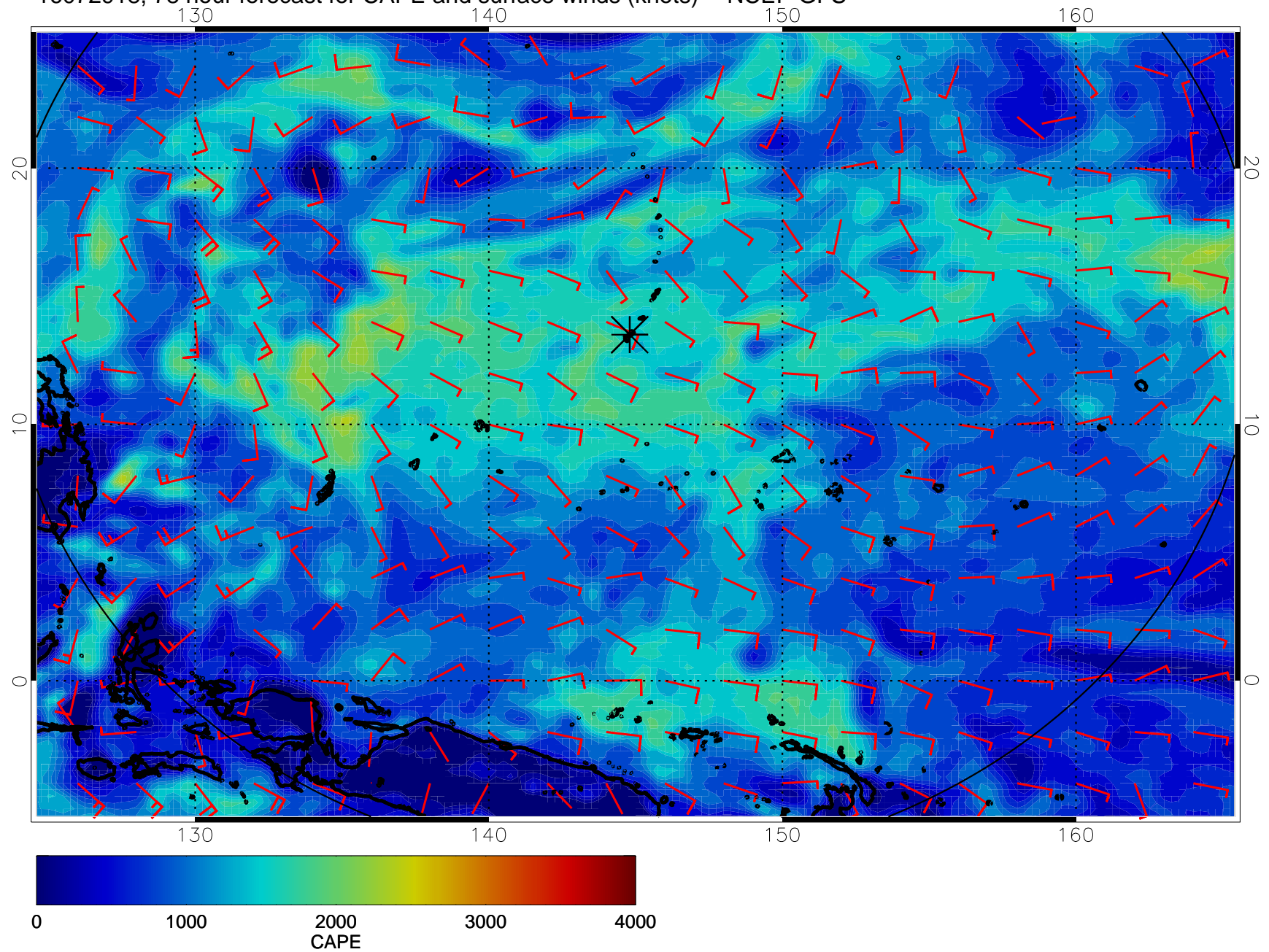


16072912, 72 hour forecast for CAPE and surface winds (knots) -- NCEP GFS

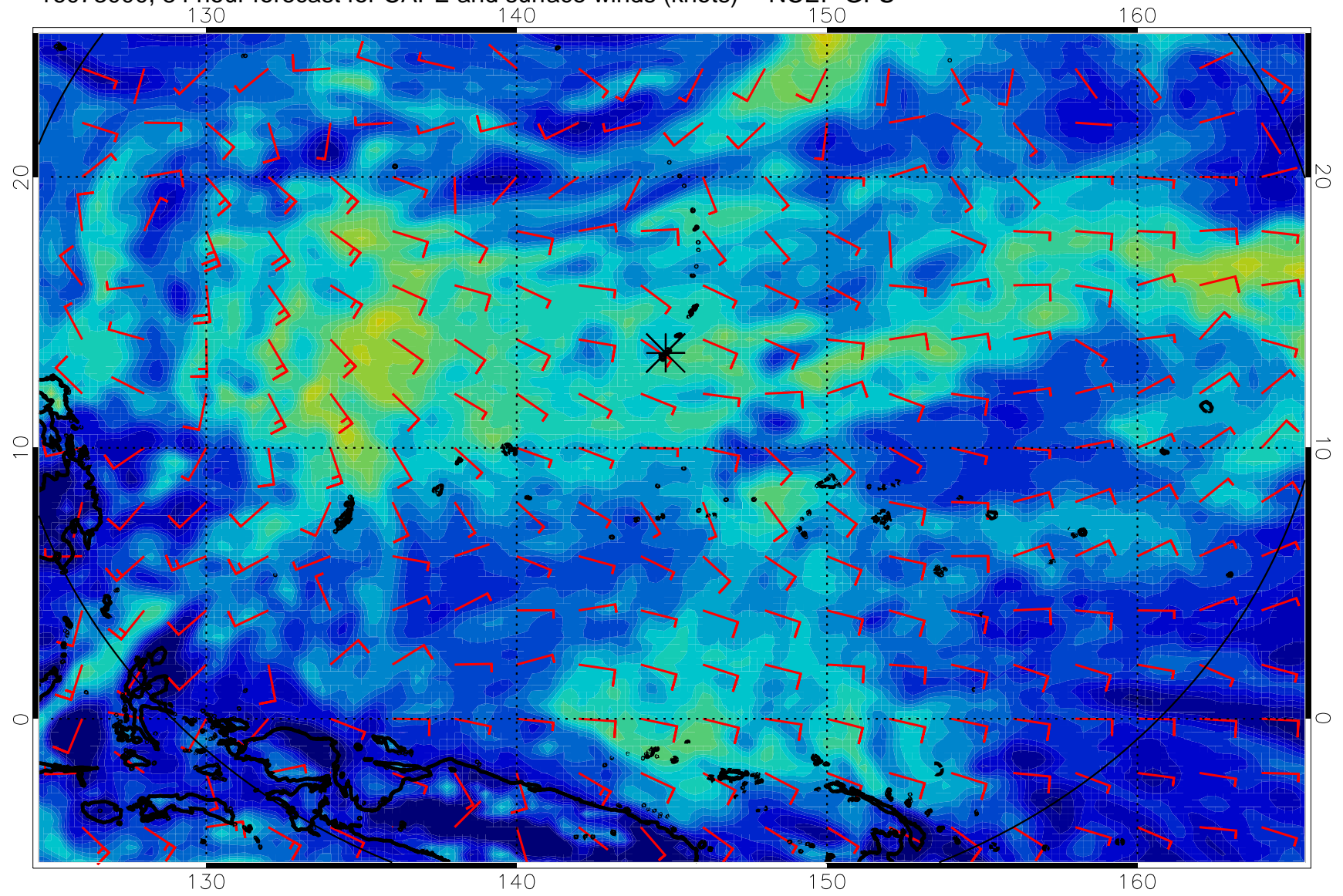




16072918, 78 hour forecast for CAPE and surface winds (knots) -- NCEP GFS

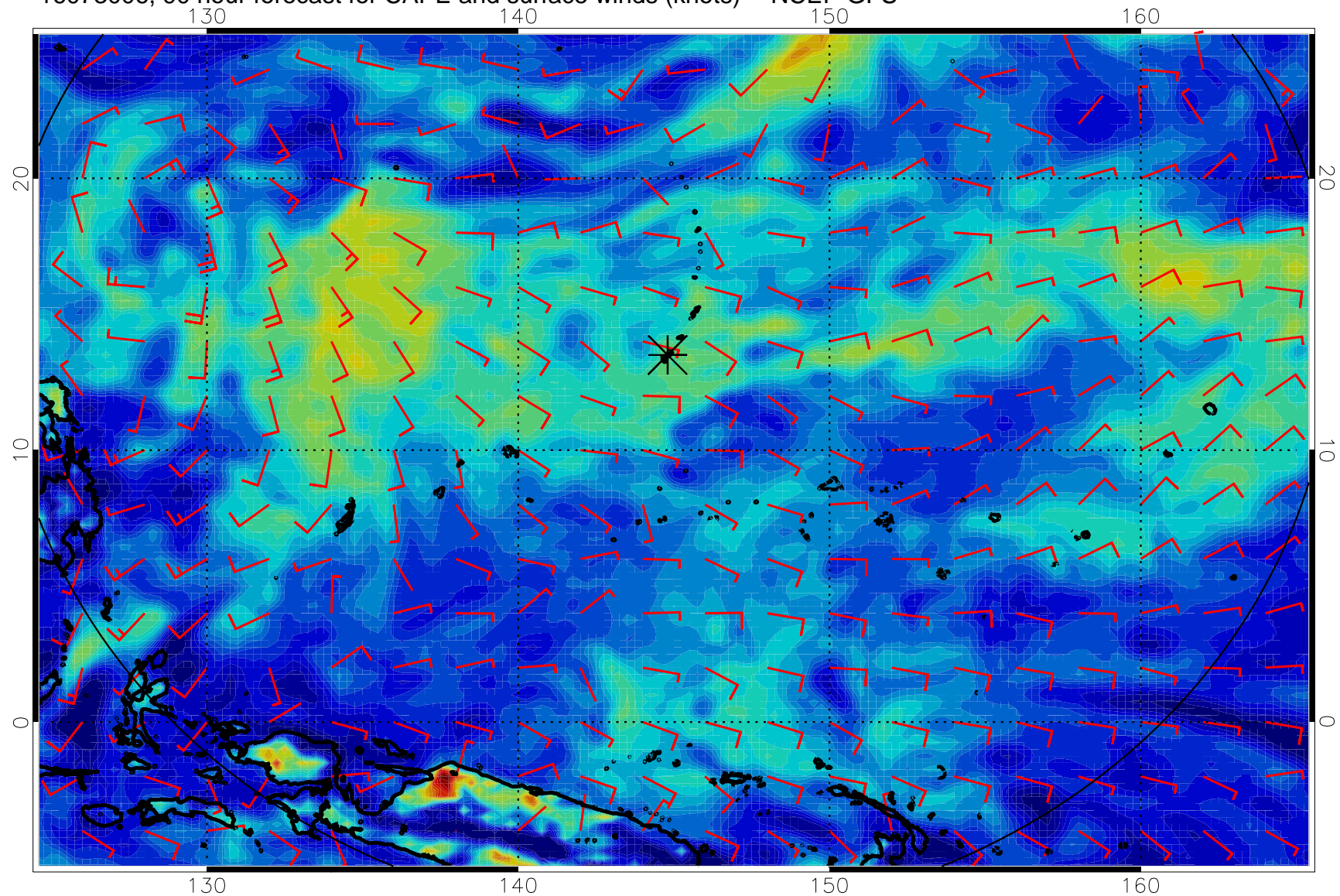


16073000, 84 hour forecast for CAPE and surface winds (knots) -- NCEP GFS

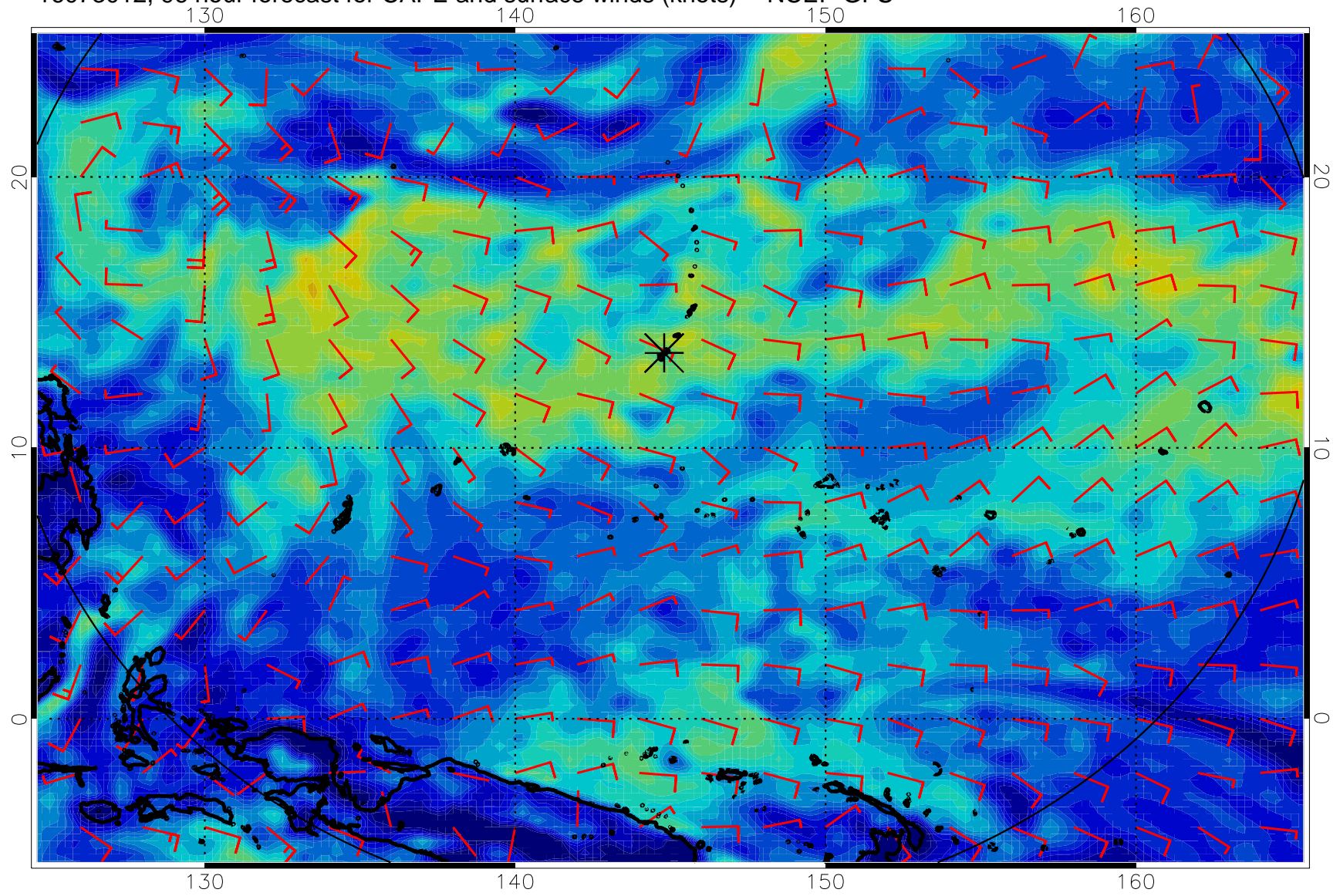




16073006, 90 hour forecast for CAPE and surface winds (knots) -- NCEP GFS

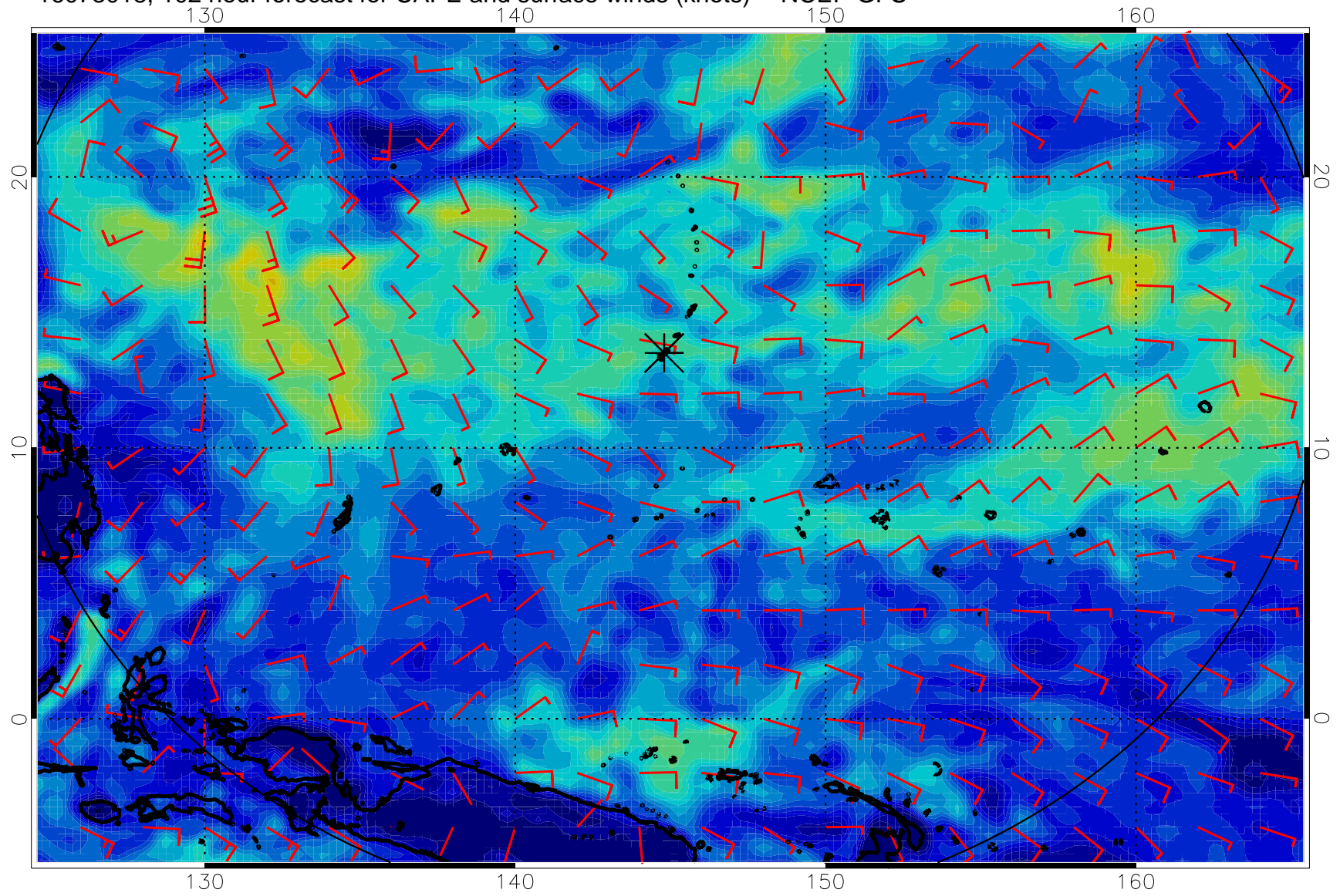


16073012, 96 hour forecast for CAPE and surface winds (knots) -- NCEP GFS

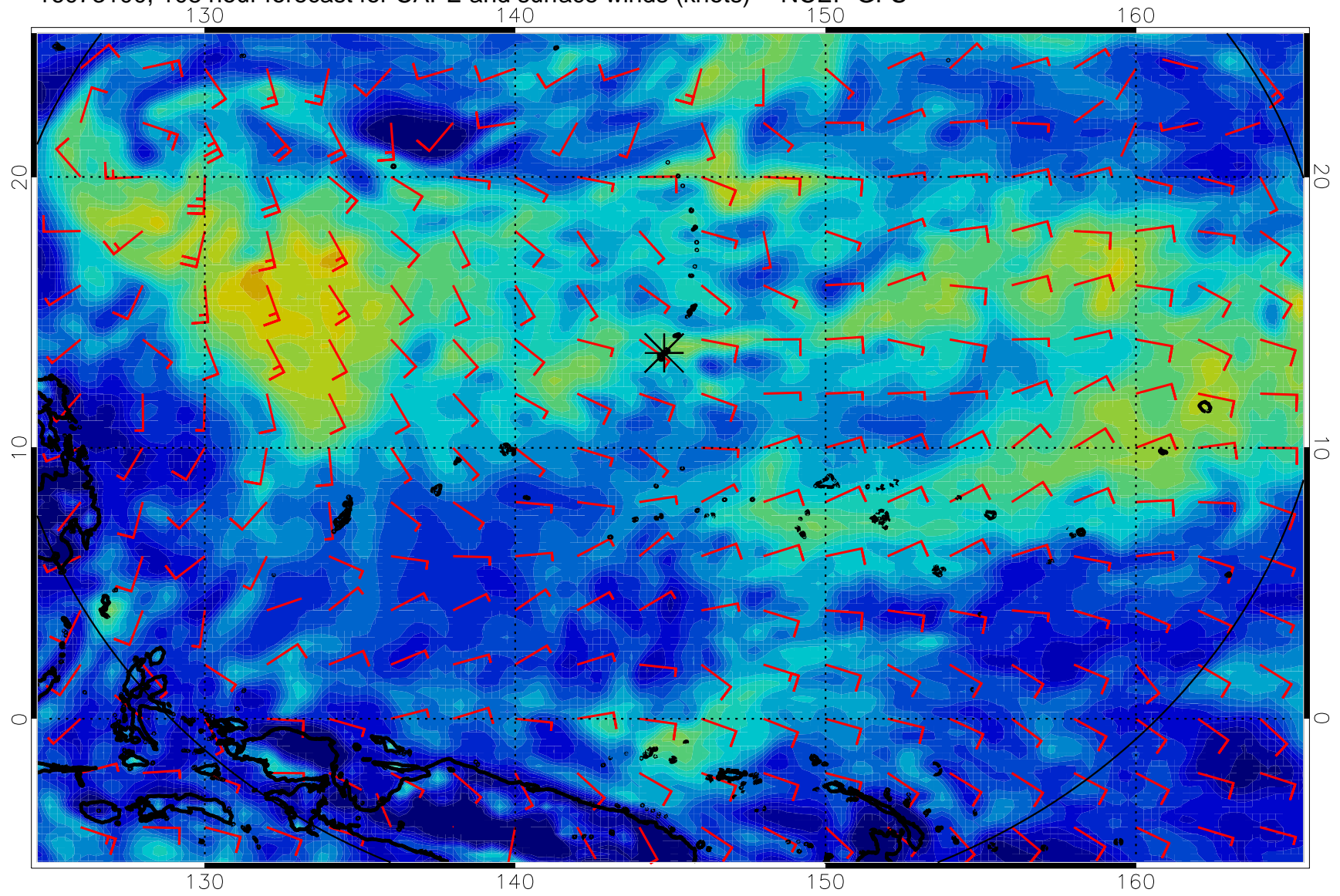




16073018, 102 hour forecast for CAPE and surface winds (knots) -- NCEP GFS

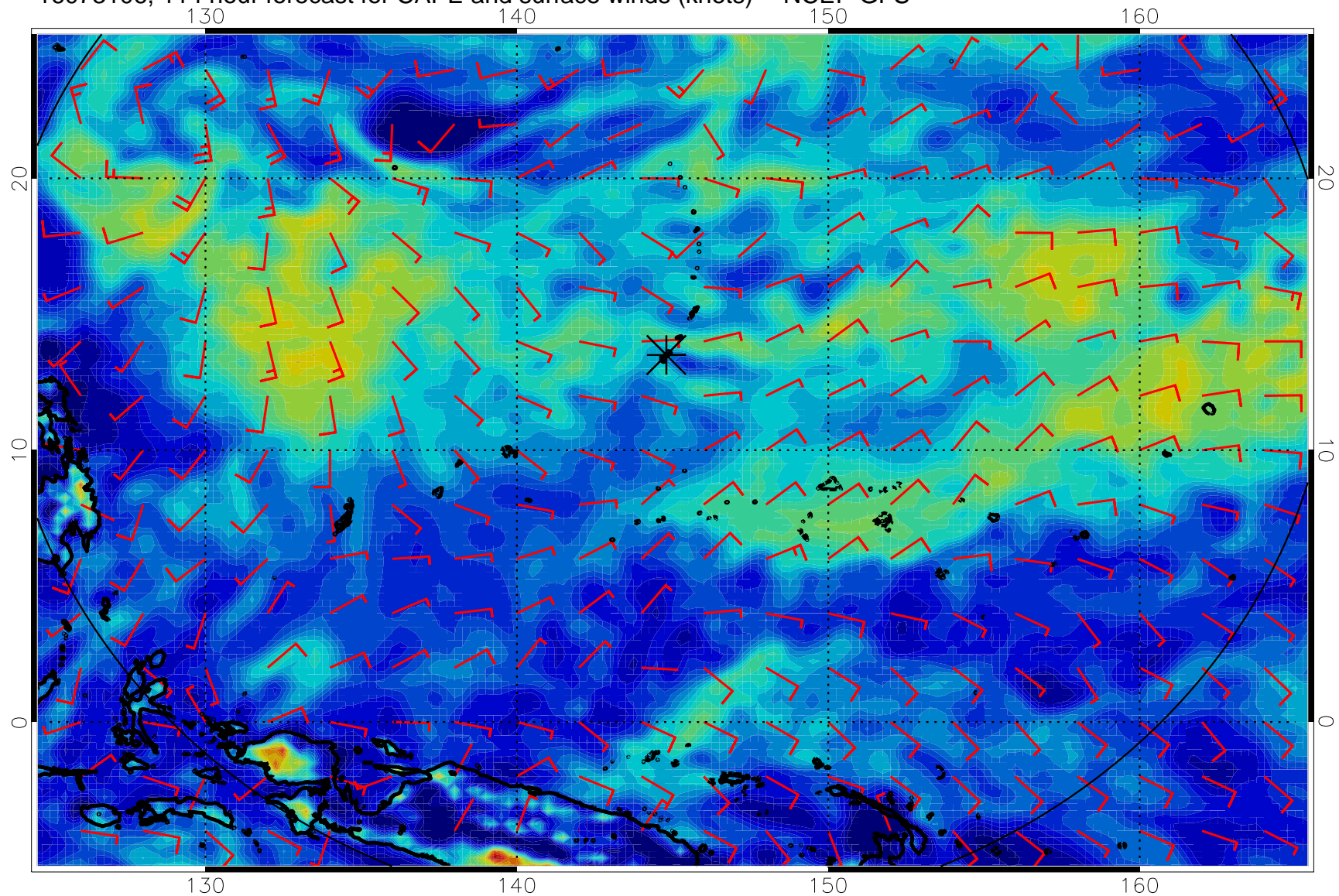


16073100, 108 hour forecast for CAPE and surface winds (knots) -- NCEP GFS





16073106, 114 hour forecast for CAPE and surface winds (knots) -- NCEP GFS



16073112, 120 hour forecast for CAPE and surface winds (knots) -- NCEP GFS

