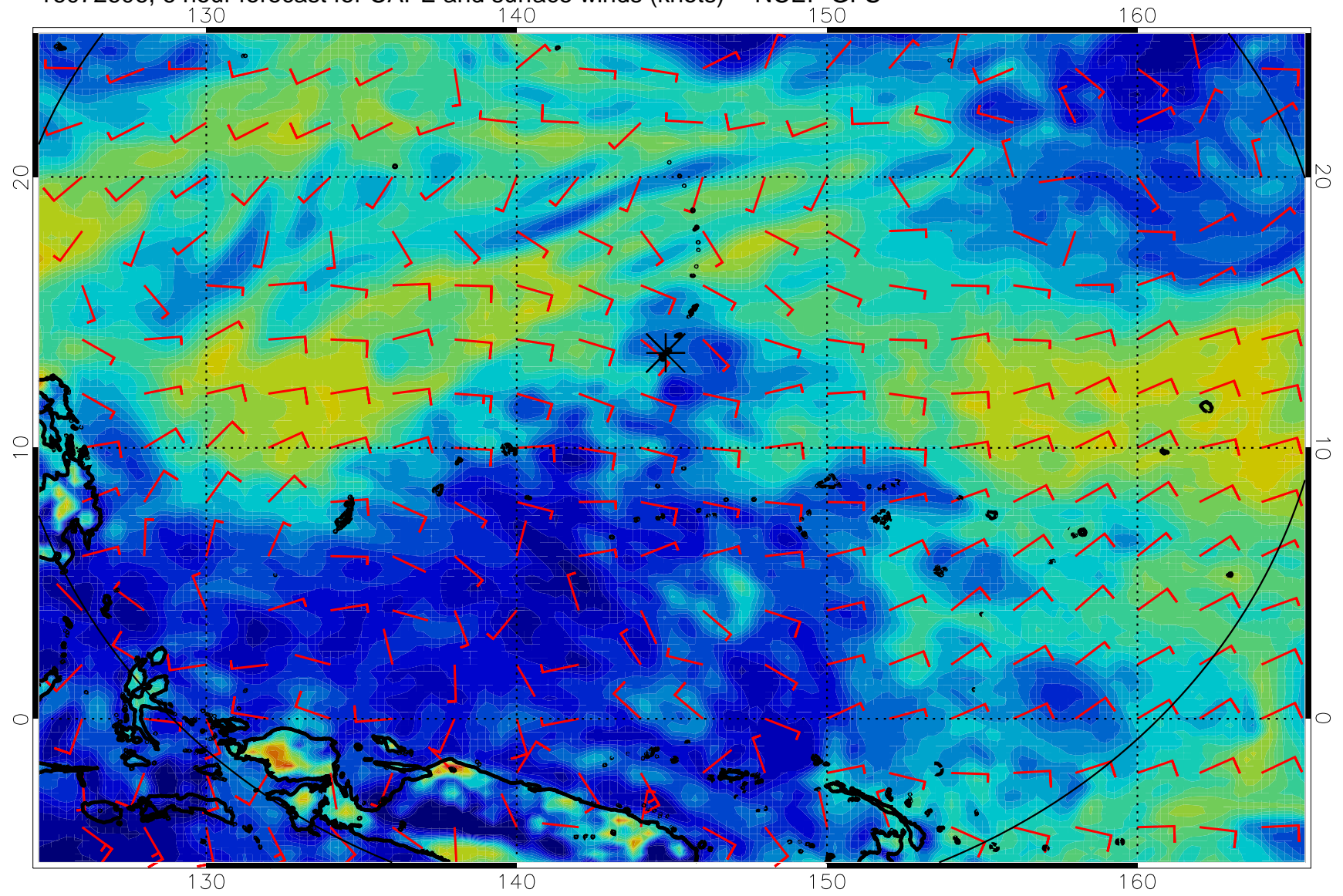
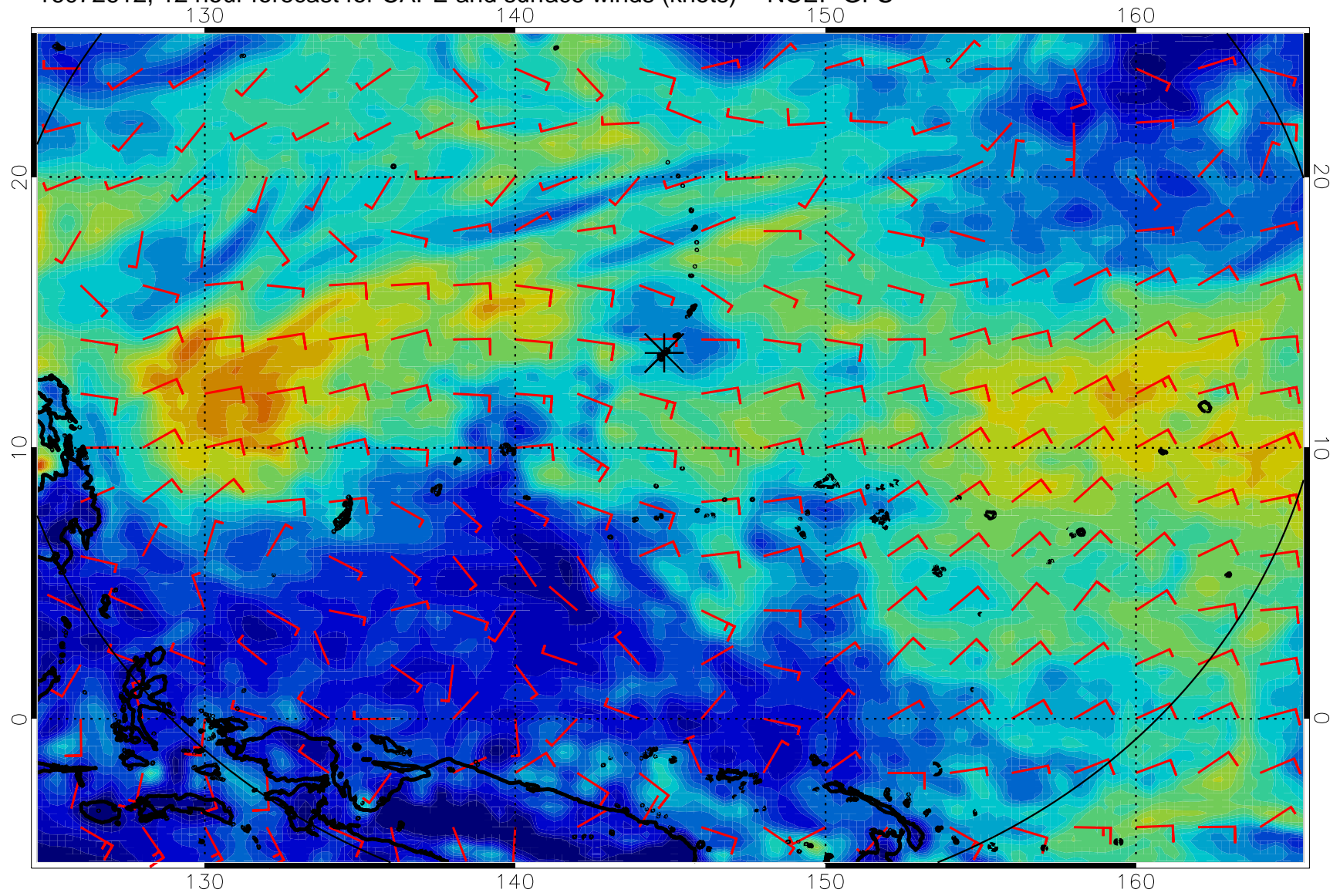


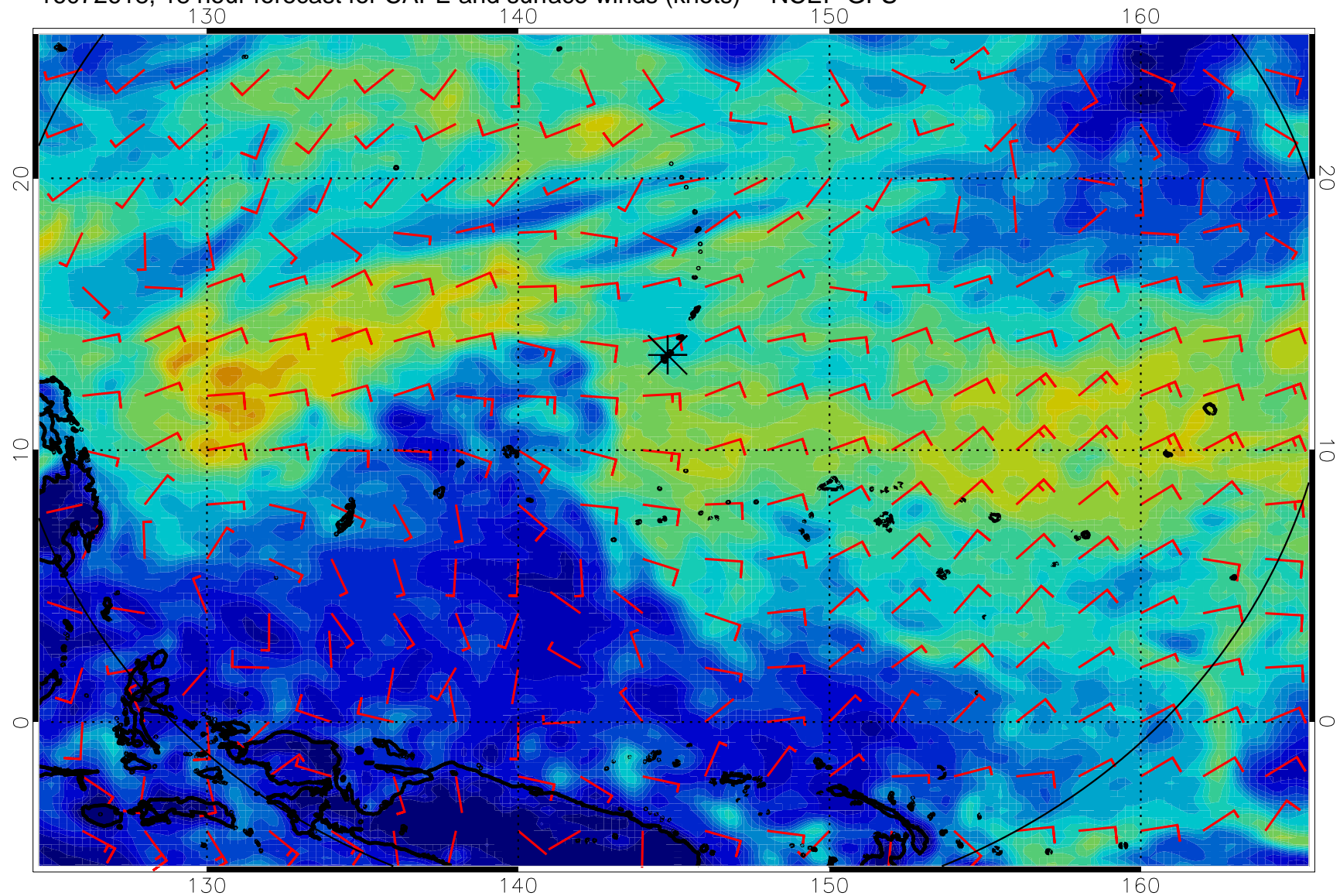
16072606, 6 hour forecast for CAPE and surface winds (knots) -- NCEP GFS



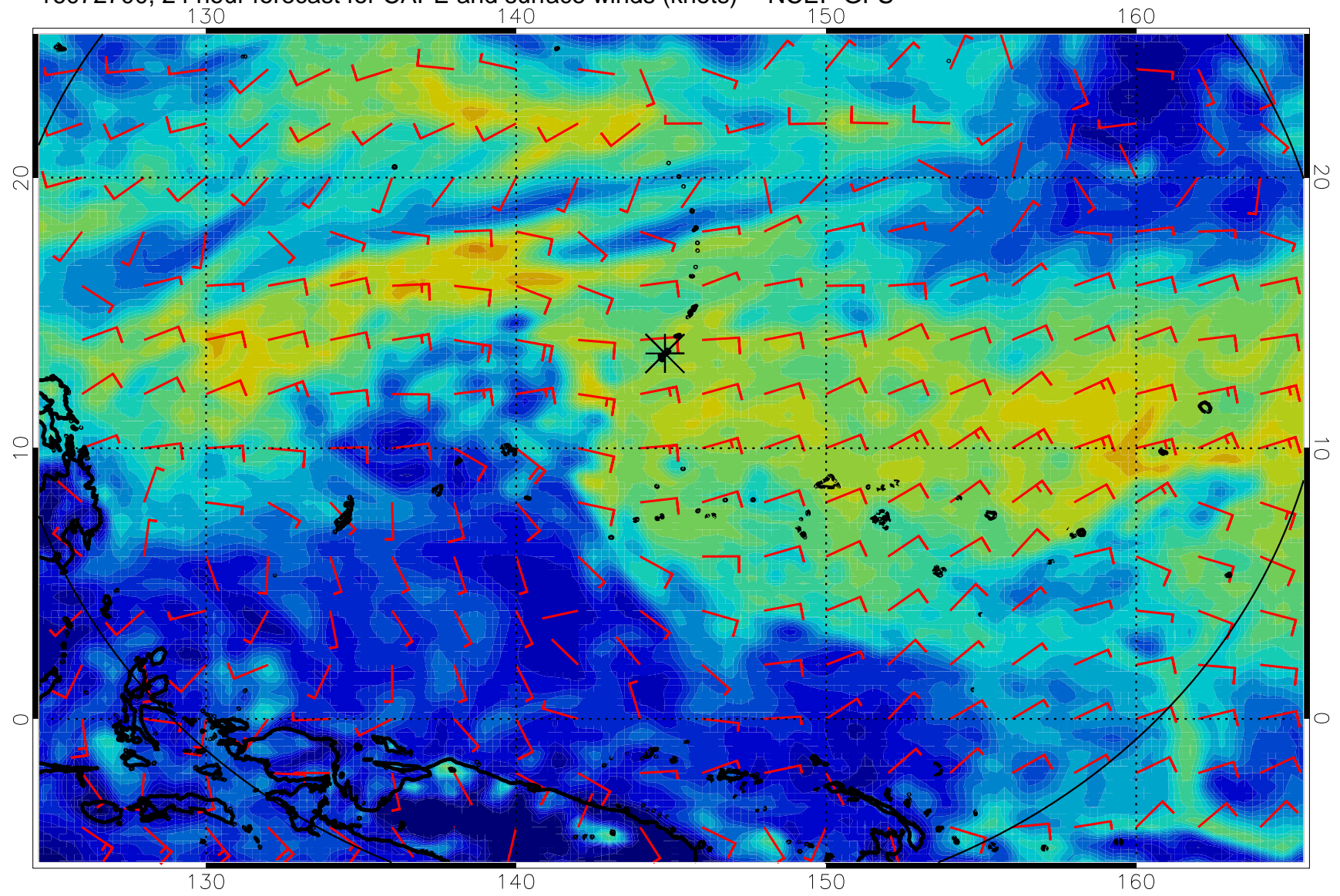
16072612, 12 hour forecast for CAPE and surface winds (knots) -- NCEP GFS



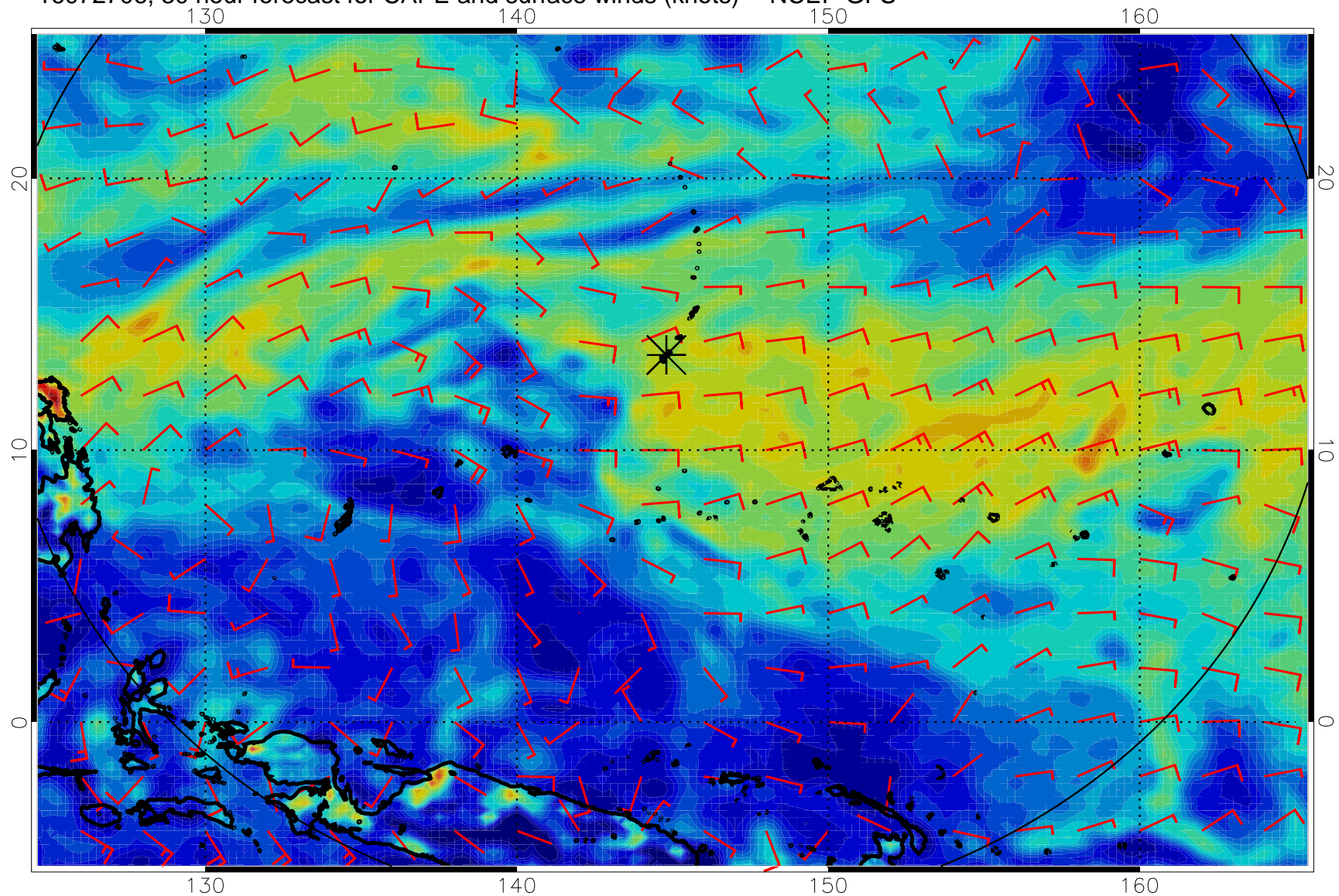
16072618, 18 hour forecast for CAPE and surface winds (knots) -- NCEP GFS



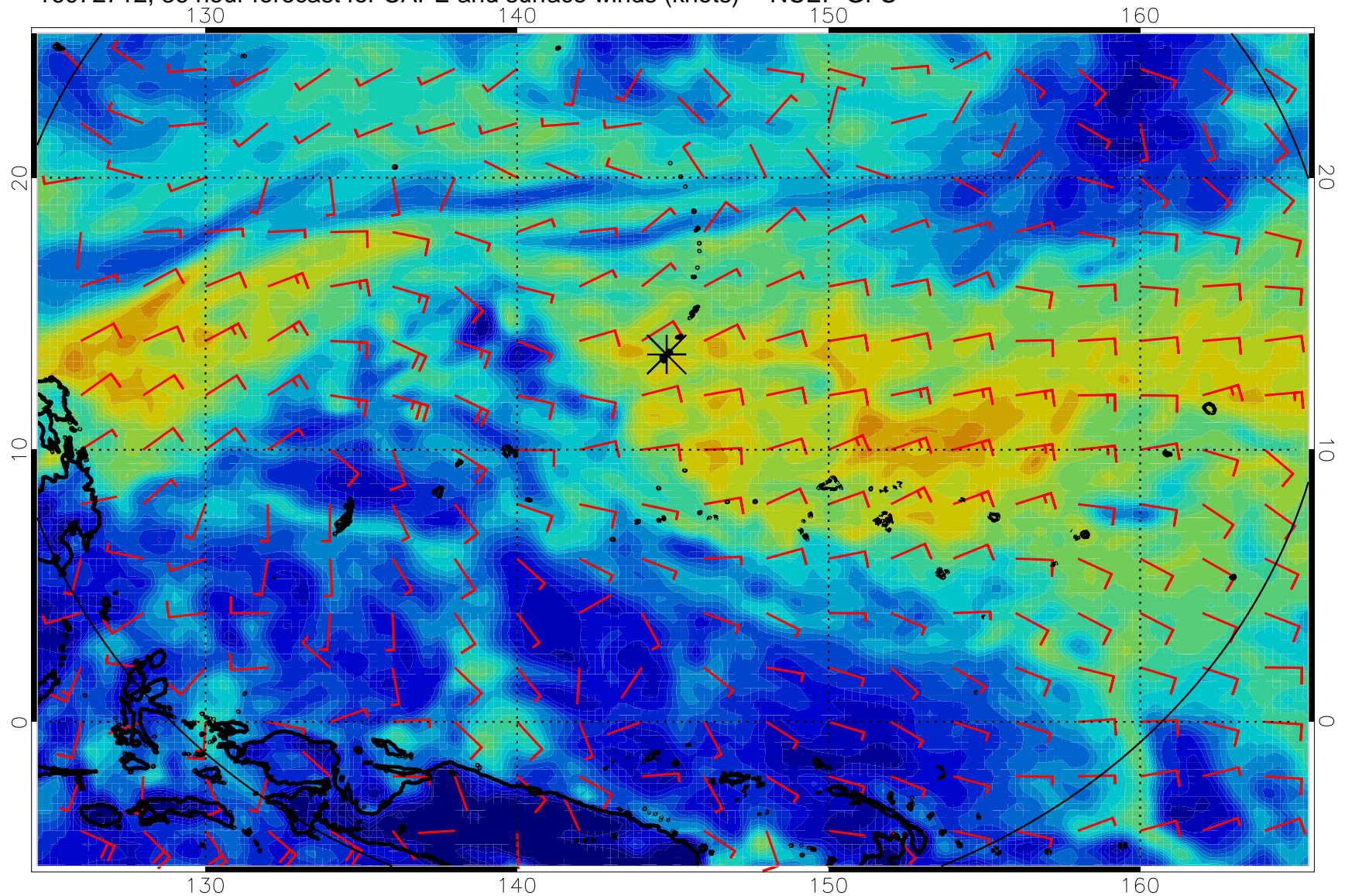
16072700, 24 hour forecast for CAPE and surface winds (knots) -- NCEP GFS



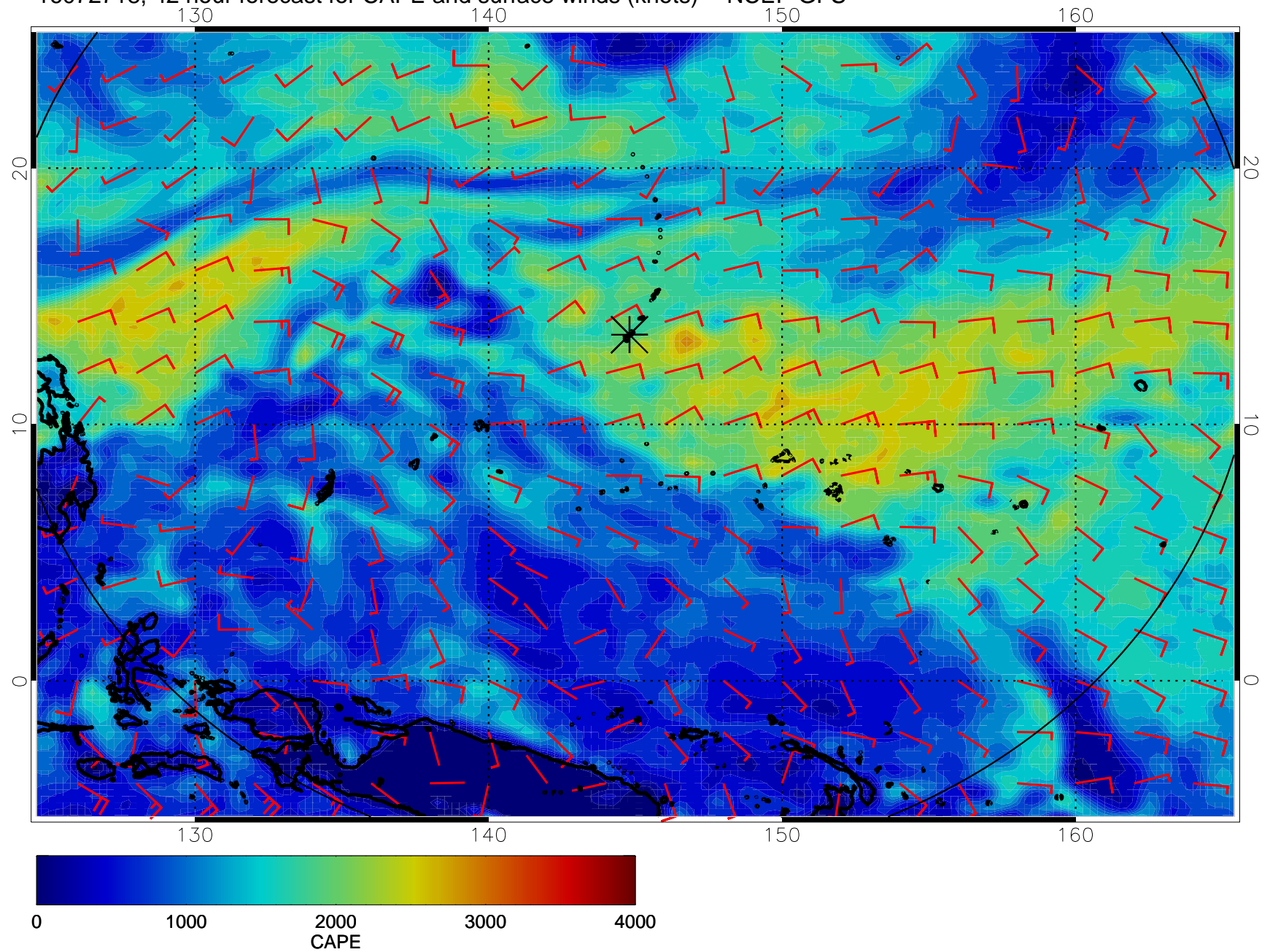
16072706, 30 hour forecast for CAPE and surface winds (knots) -- NCEP GFS



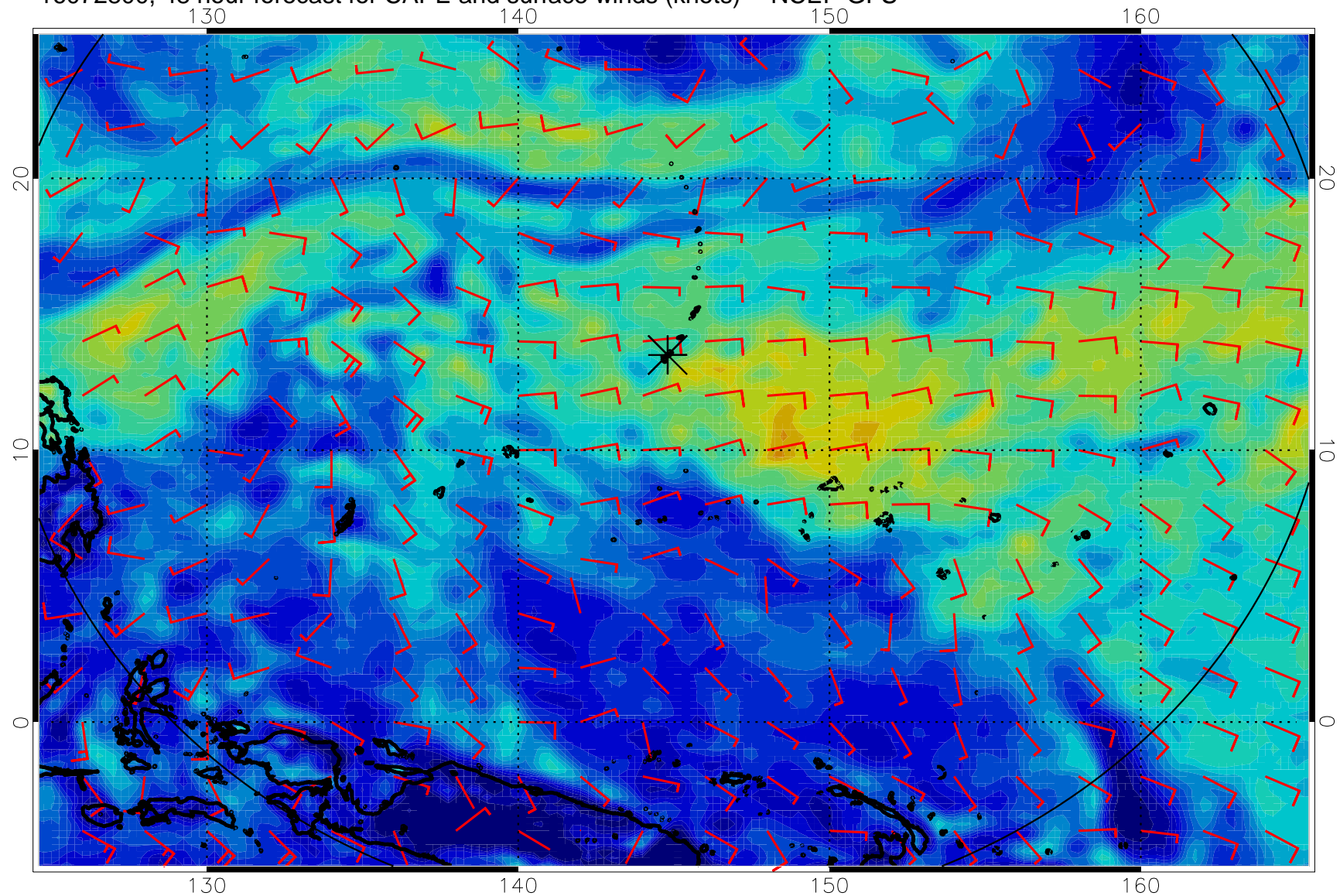
16072712, 36 hour forecast for CAPE and surface winds (knots) -- NCEP GFS



16072718, 42 hour forecast for CAPE and surface winds (knots) -- NCEP GFS

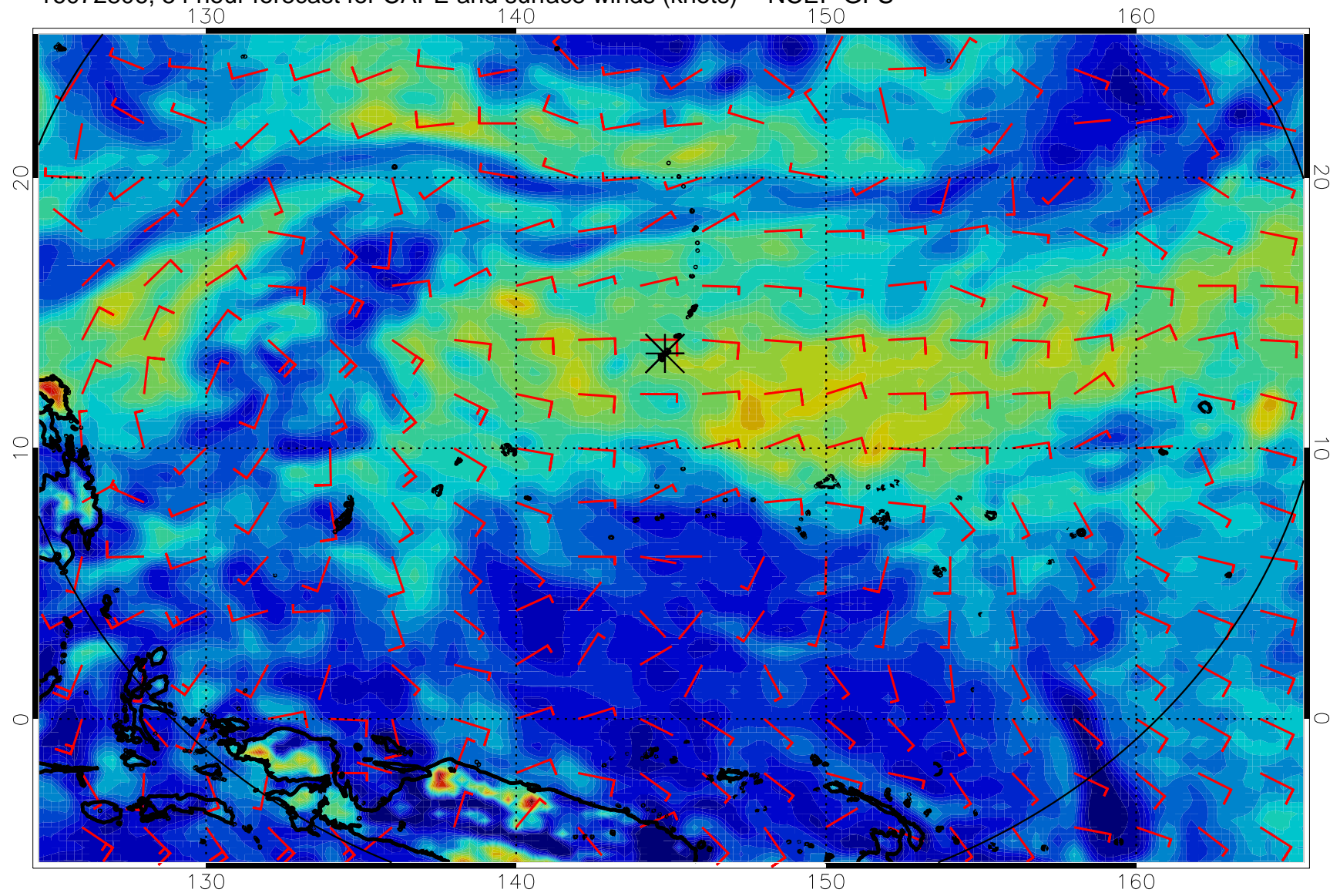


16072800, 48 hour forecast for CAPE and surface winds (knots) -- NCEP GFS

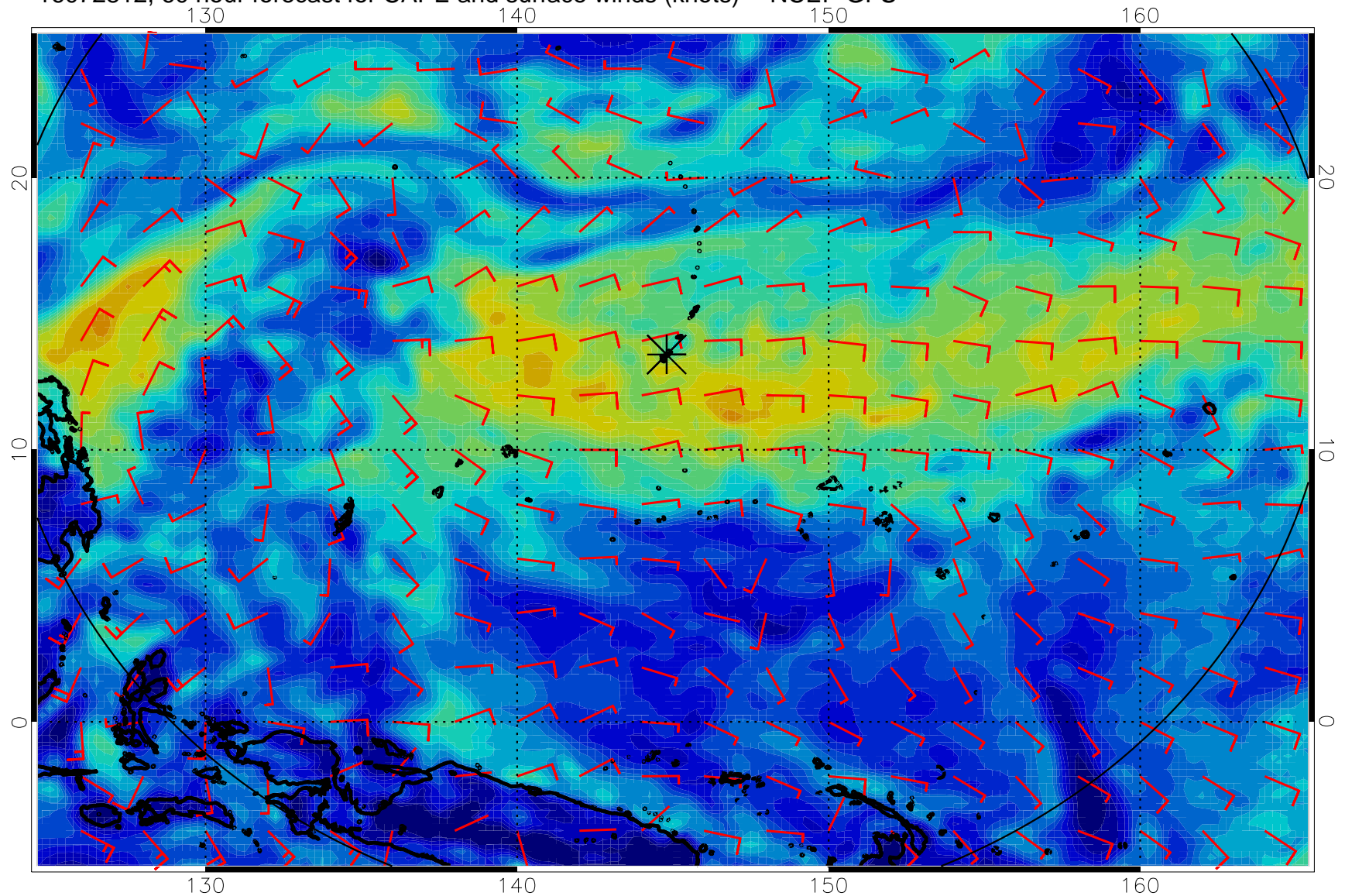




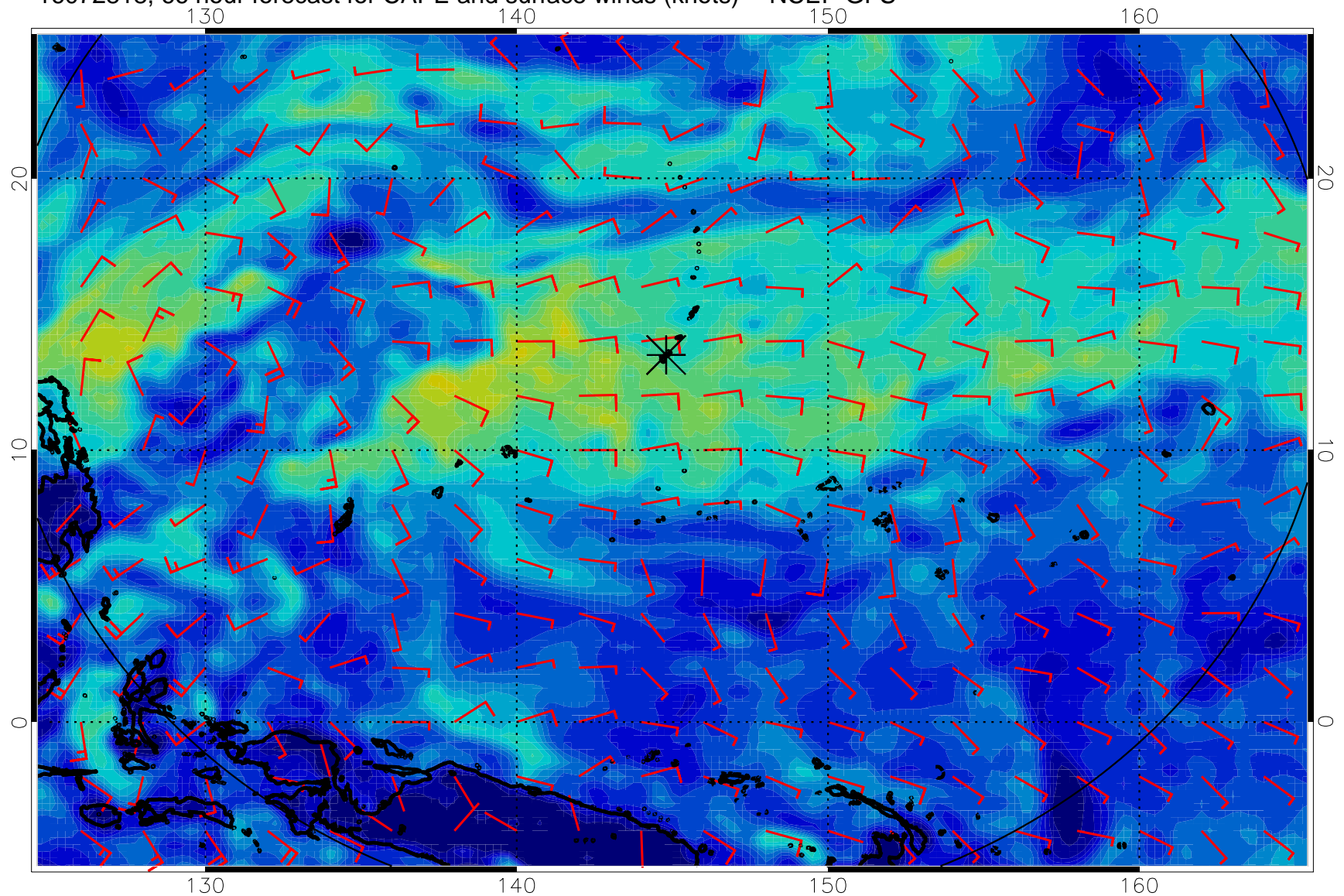
16072806, 54 hour forecast for CAPE and surface winds (knots) -- NCEP GFS



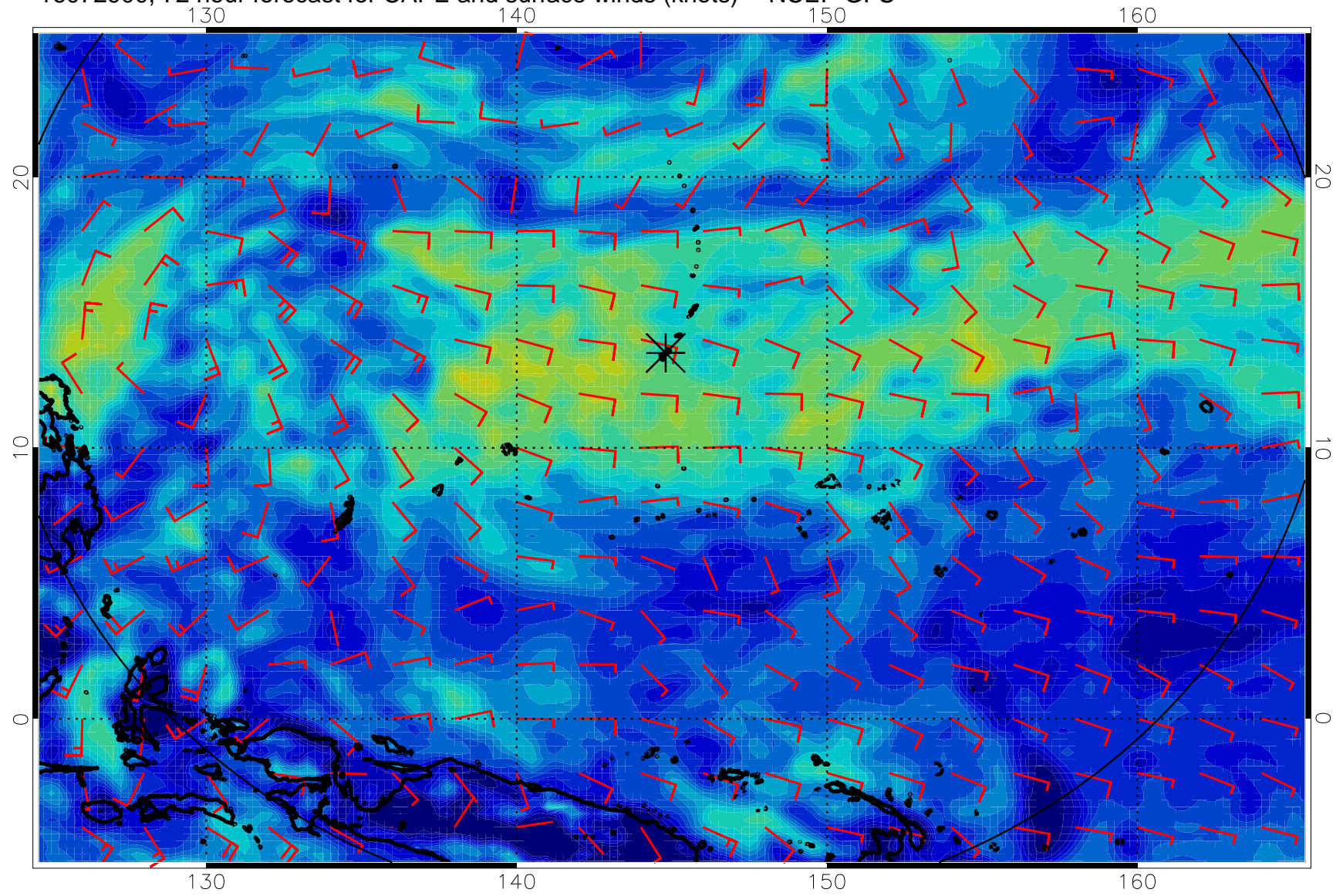
16072812, 60 hour forecast for CAPE and surface winds (knots) -- NCEP GFS



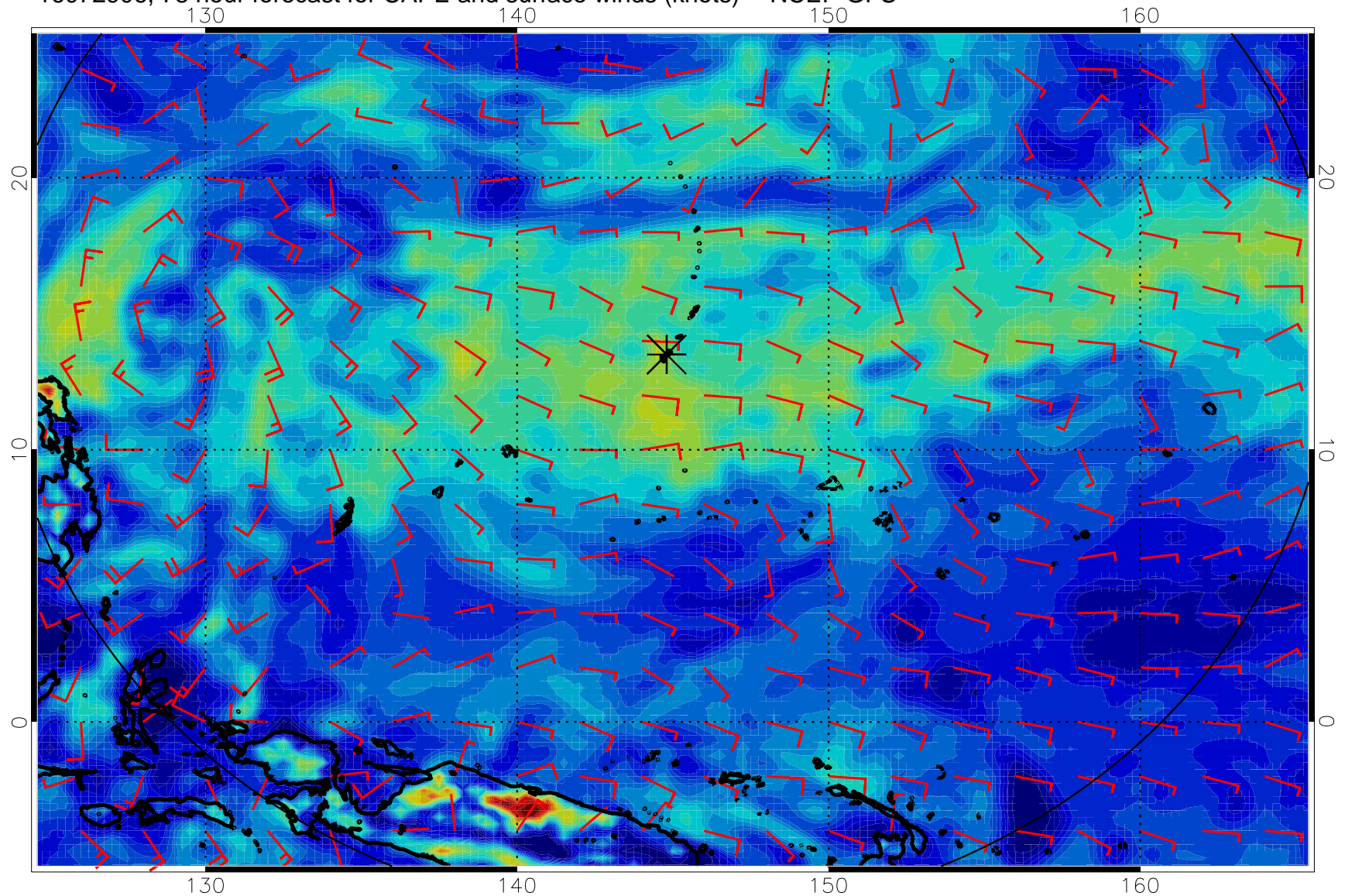
16072818, 66 hour forecast for CAPE and surface winds (knots) -- NCEP GFS



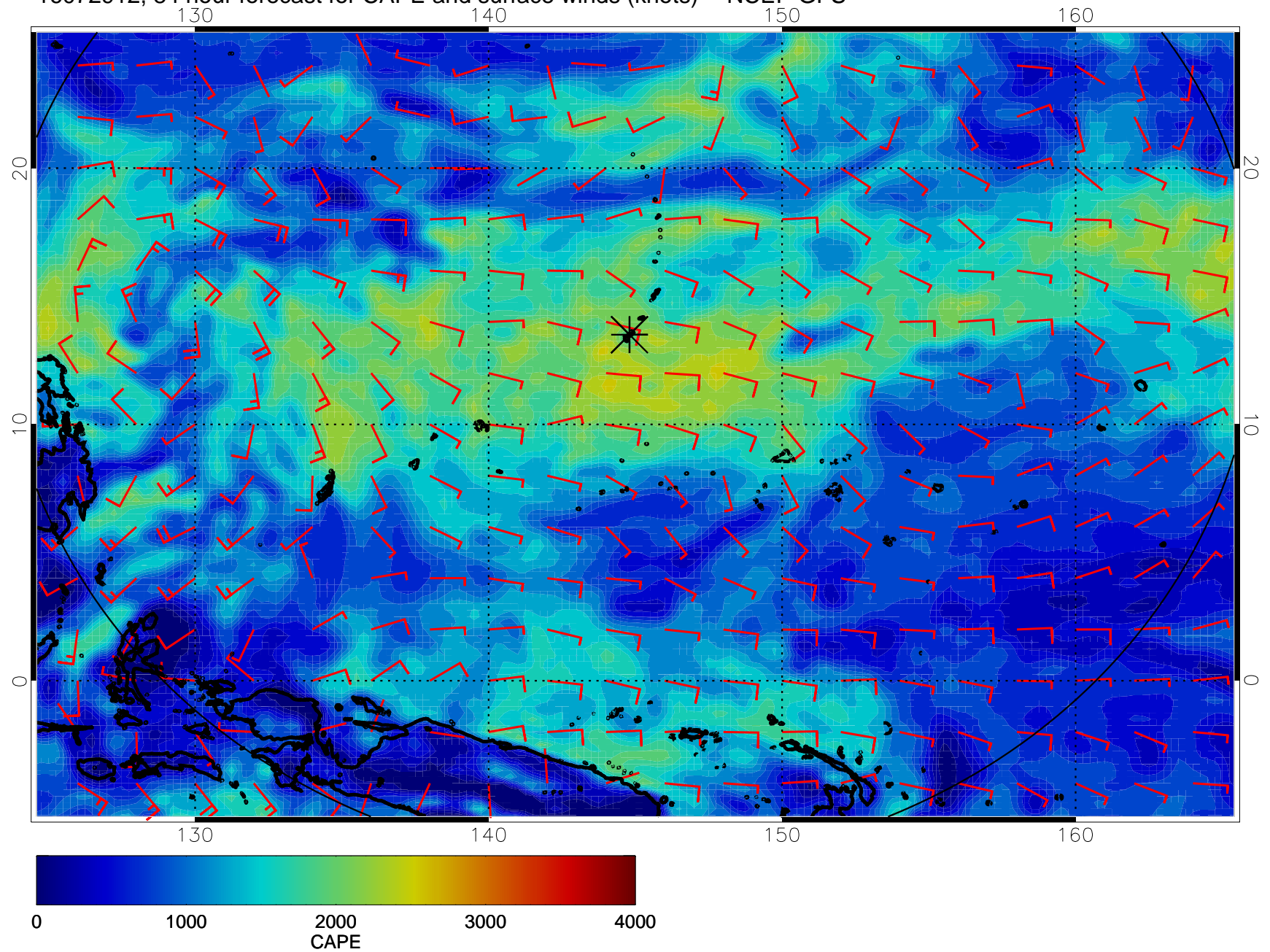
16072900, 72 hour forecast for CAPE and surface winds (knots) -- NCEP GFS



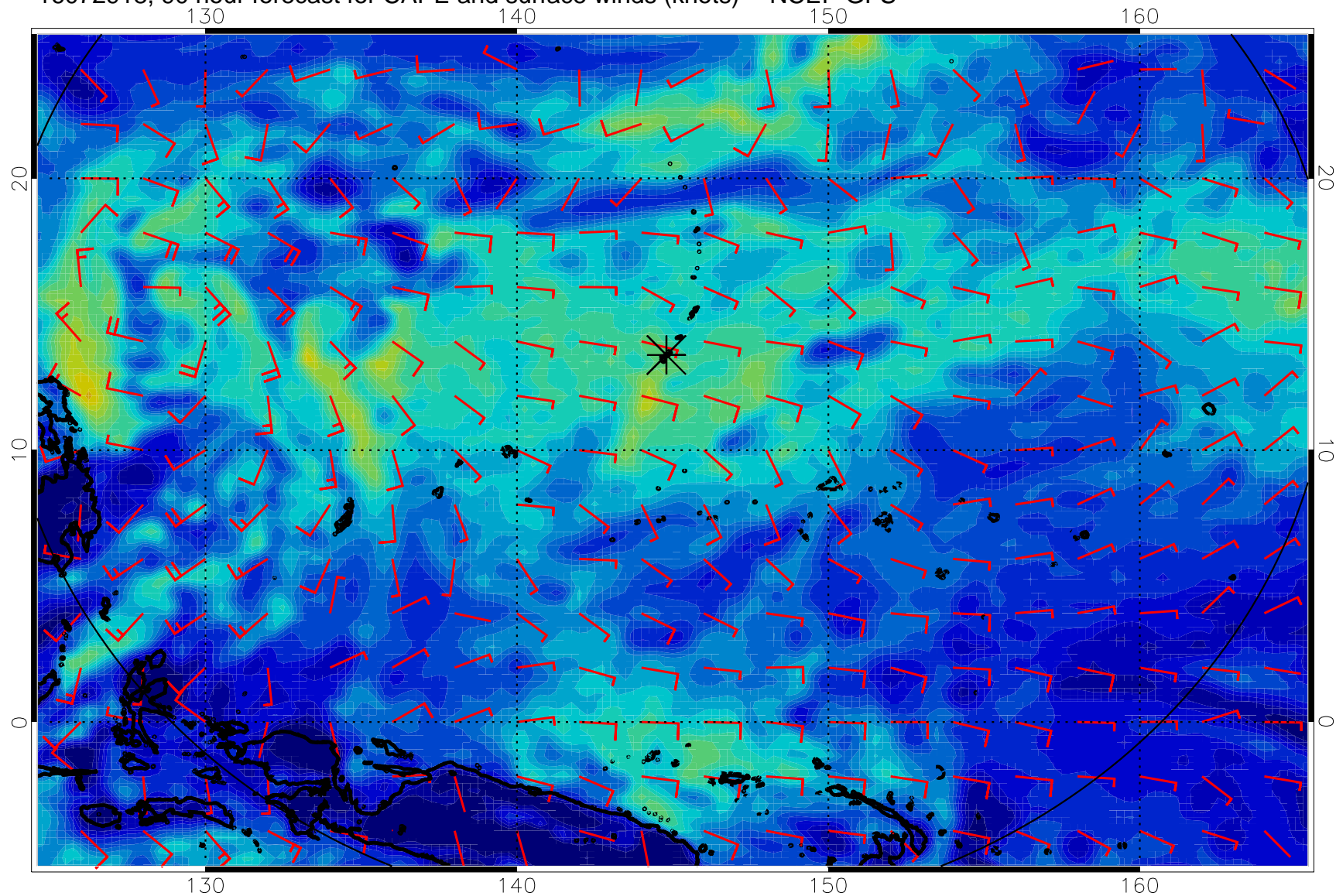
16072906, 78 hour forecast for CAPE and surface winds (knots) -- NCEP GFS



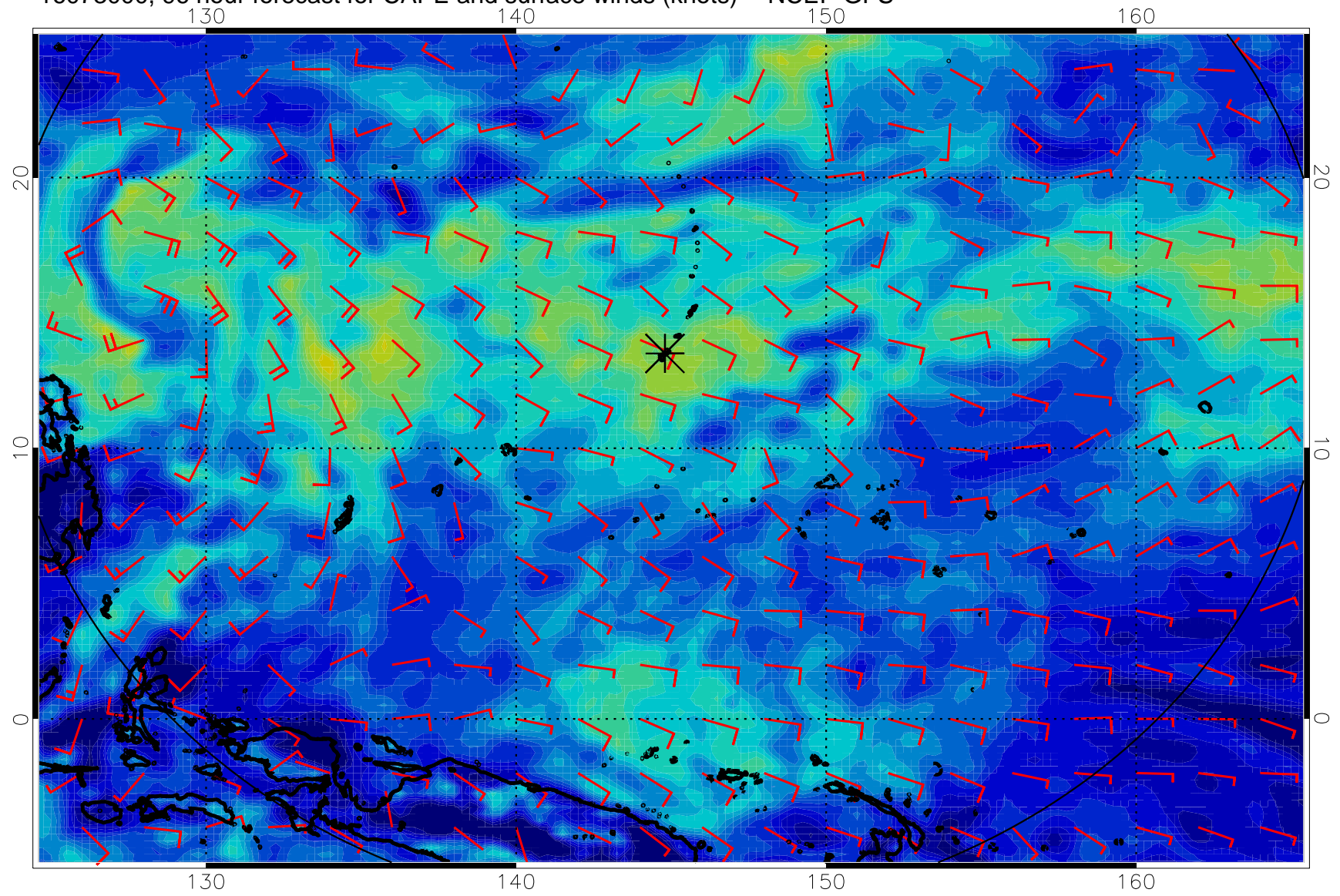
16072912, 84 hour forecast for CAPE and surface winds (knots) -- NCEP GFS



16072918, 90 hour forecast for CAPE and surface winds (knots) -- NCEP GFS

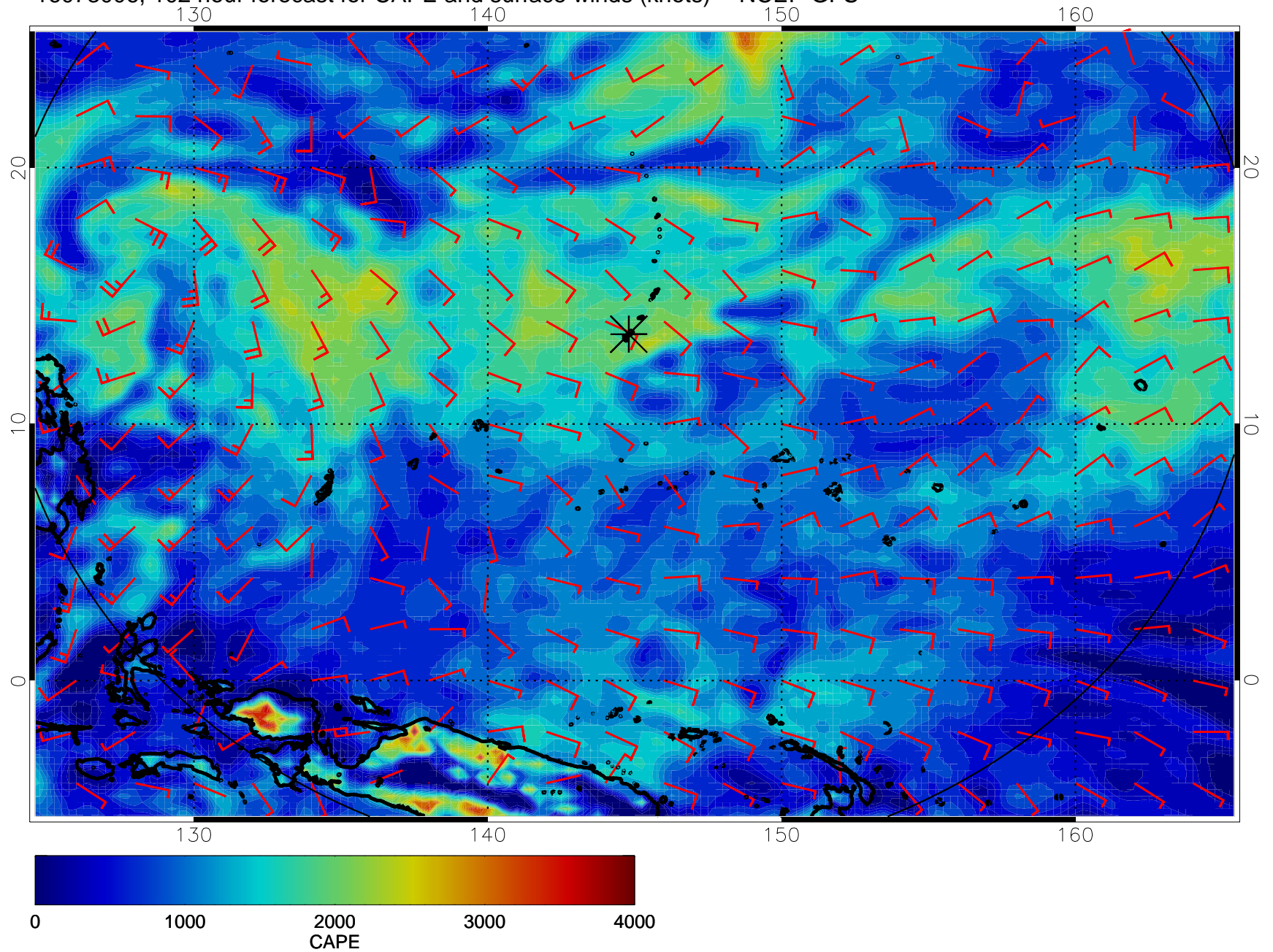


16073000, 96 hour forecast for CAPE and surface winds (knots) -- NCEP GFS

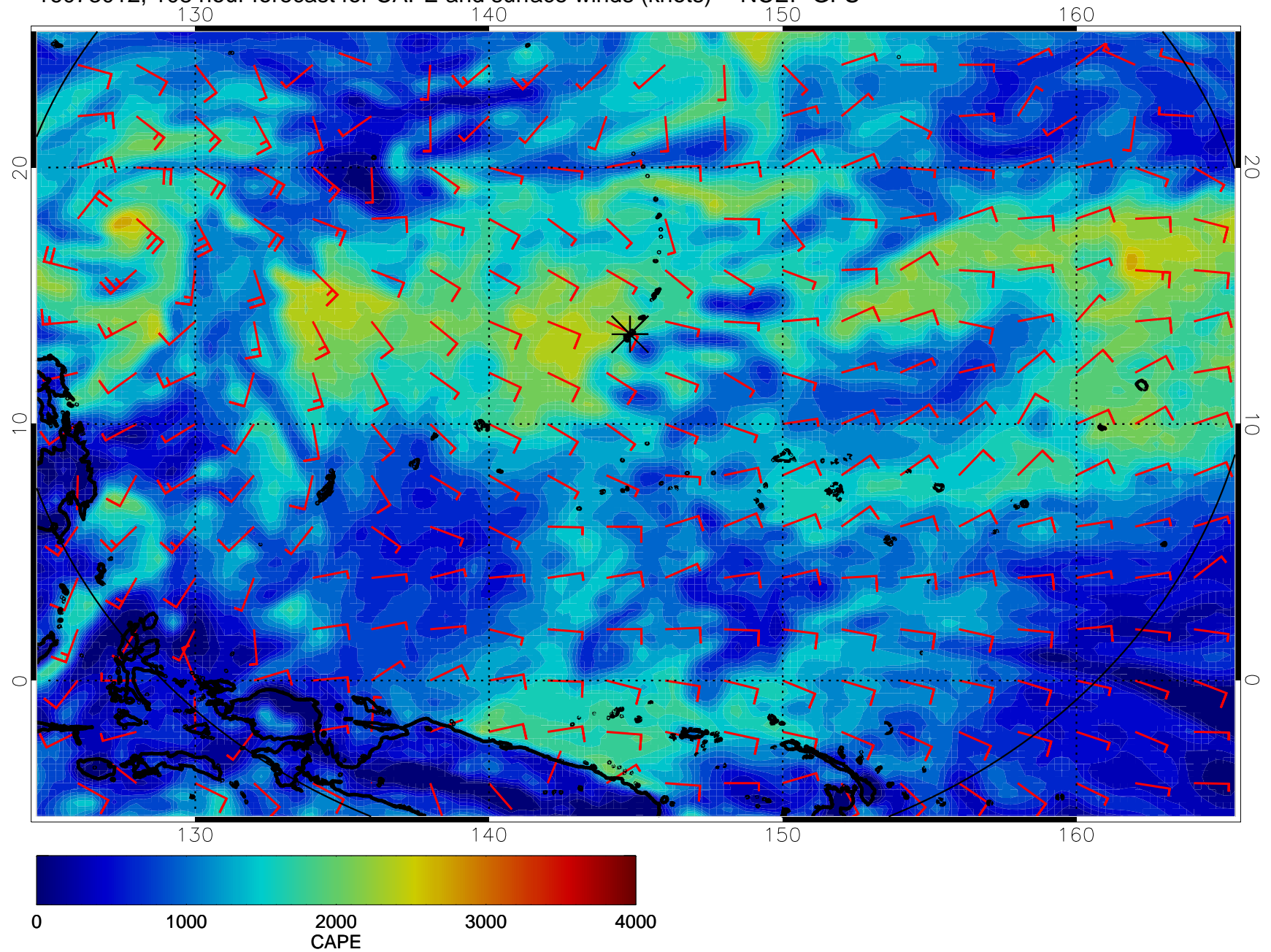




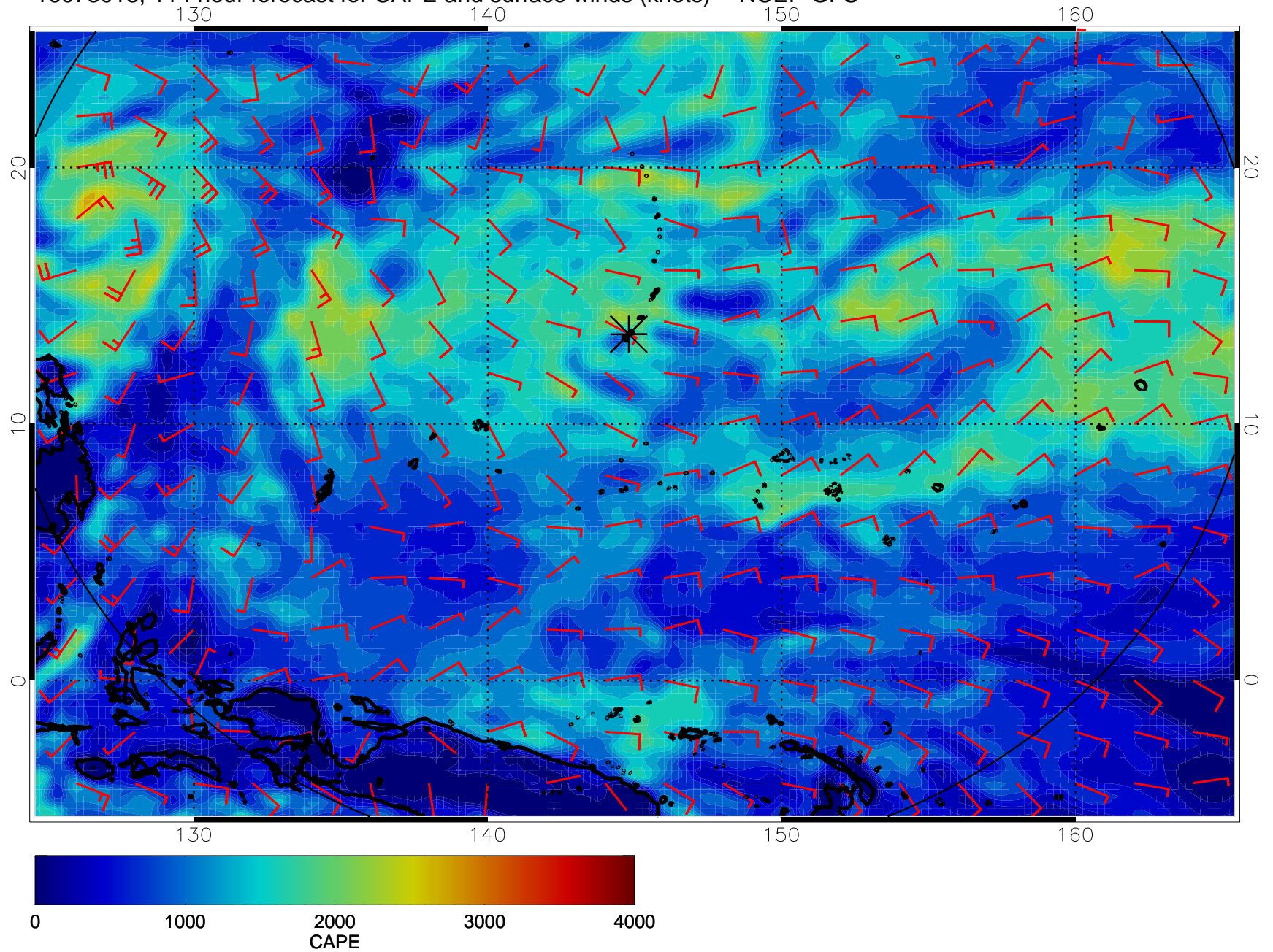
16073006, 102 hour forecast for CAPE and surface winds (knots) -- NCEP GFS



16073012, 108 hour forecast for CAPE and surface winds (knots) -- NCEP GFS



16073018, 114 hour forecast for CAPE and surface winds (knots) -- NCEP GFS



16073100, 120 hour forecast for CAPE and surface winds (knots) -- NCEP GFS

