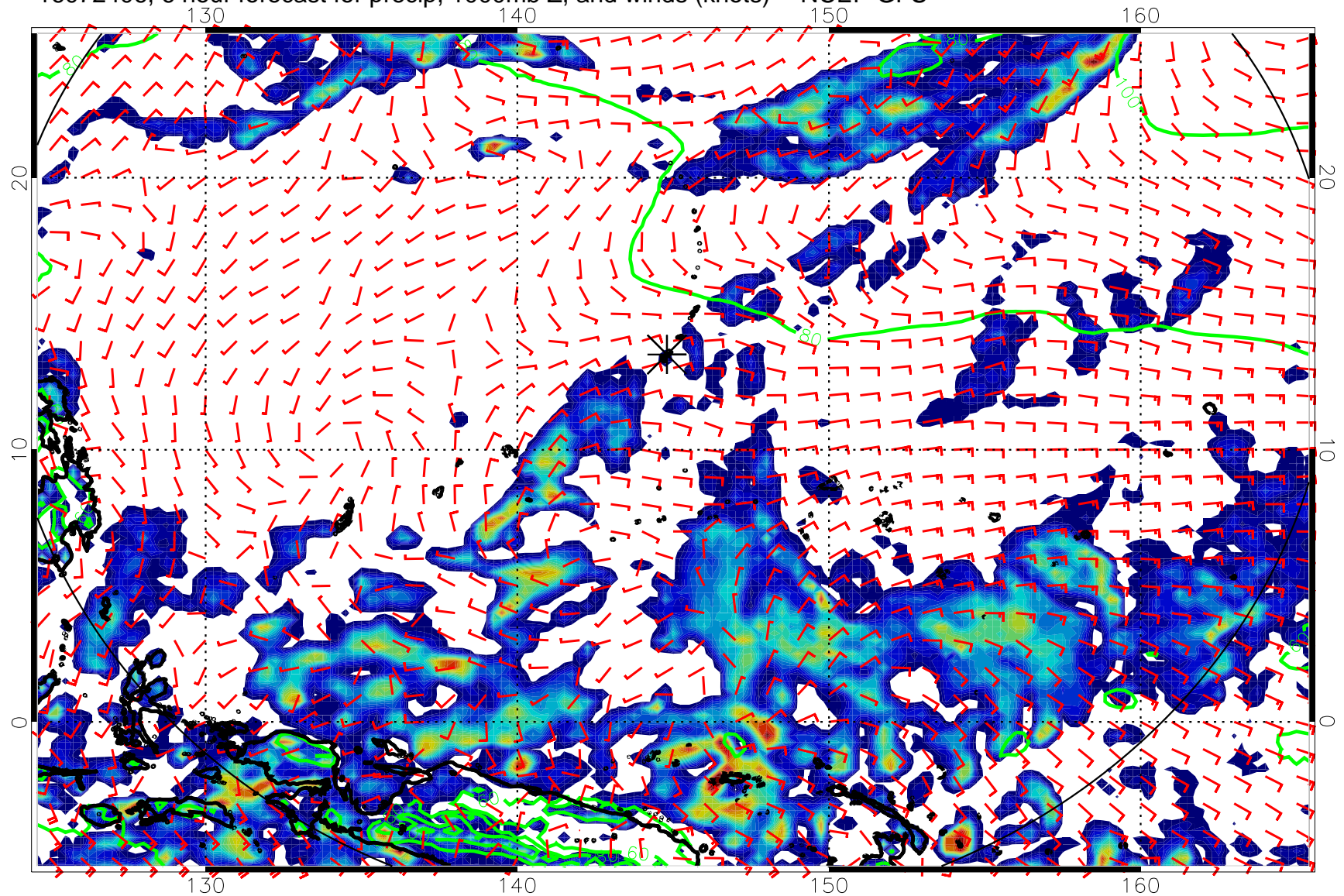
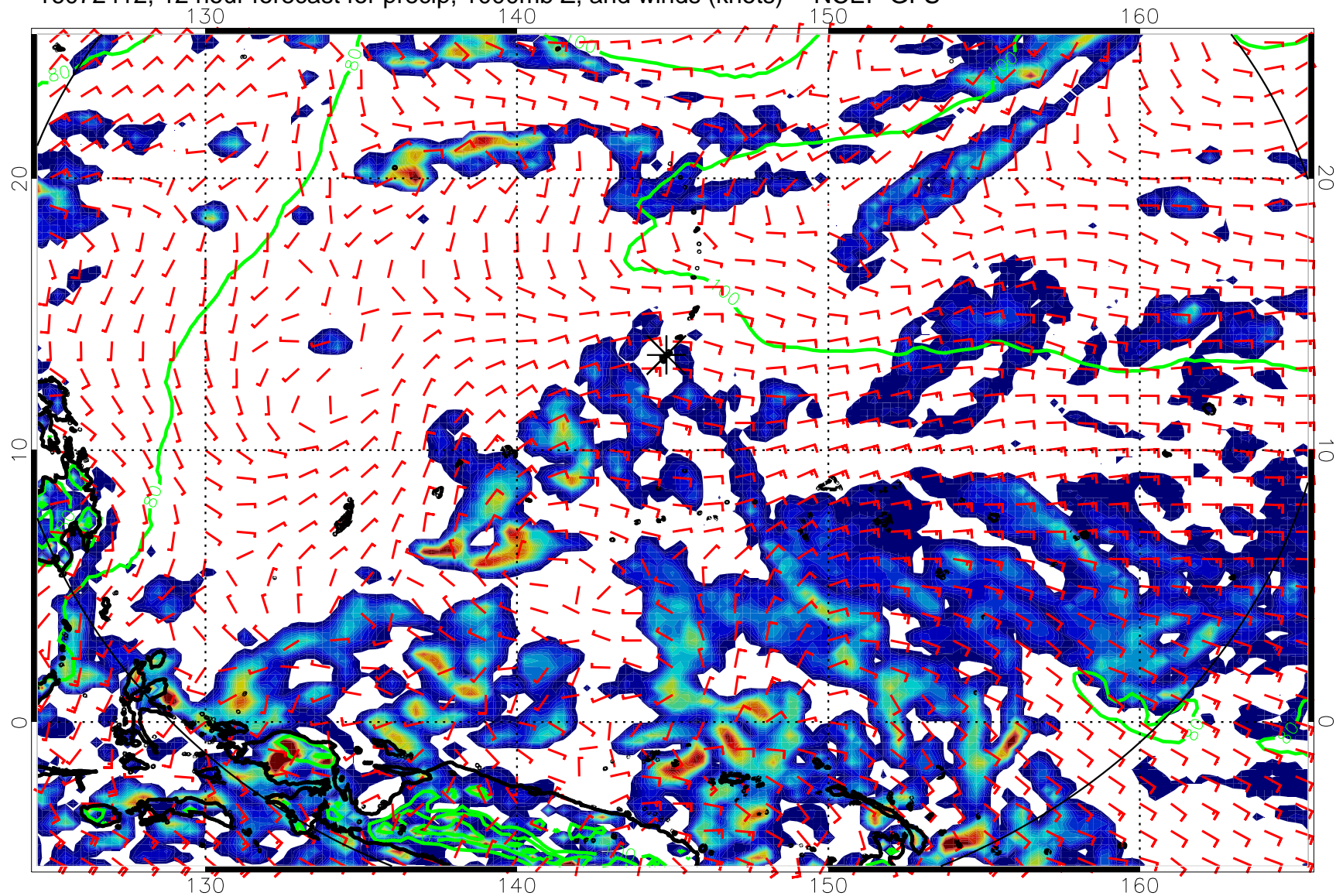


16072406, 6 hour forecast for precip, 1000mb Z, and winds (knots) -- NCEP GFS



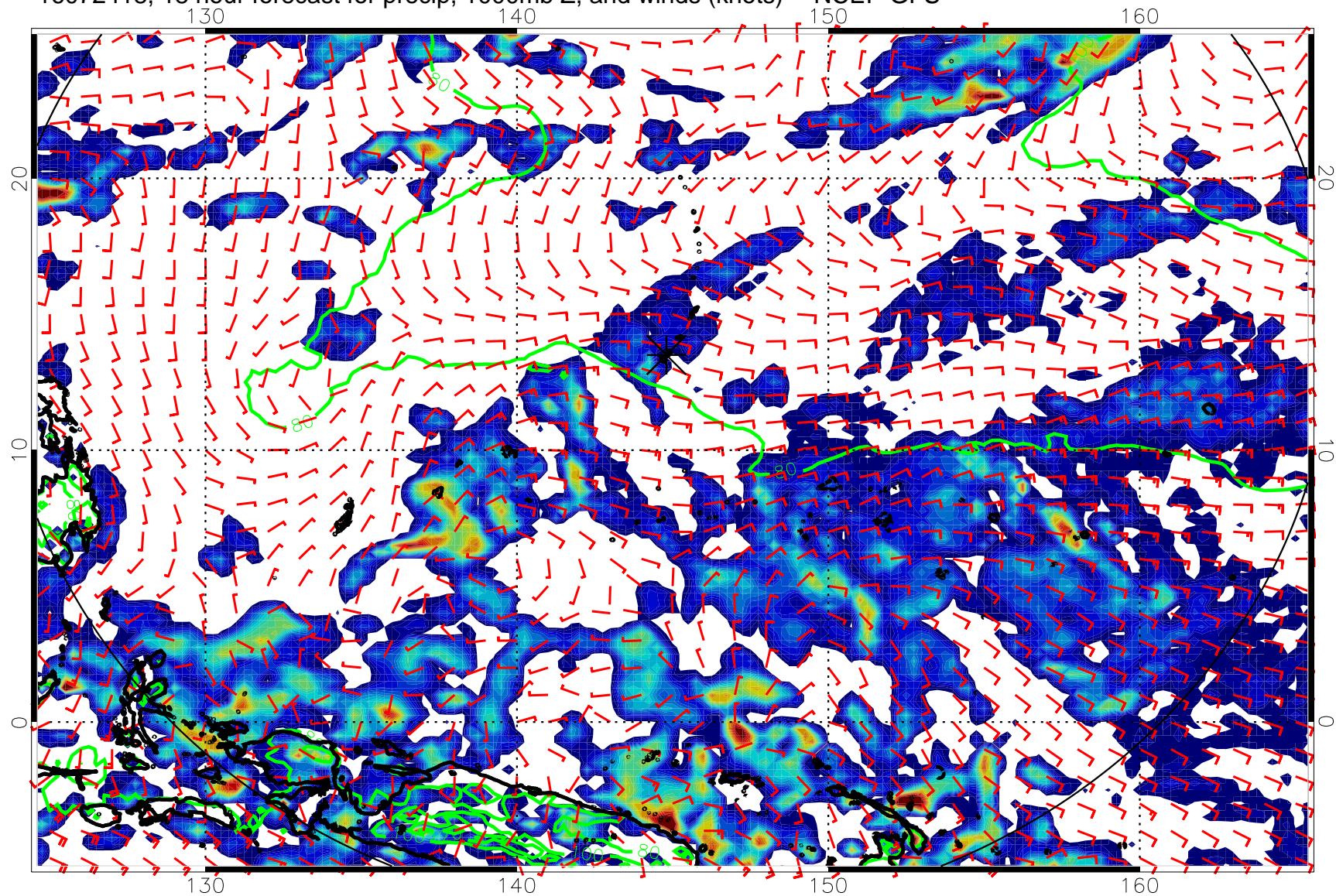
20 40 60 80
Precipitation, mm/day

16072412, 12 hour forecast for precip, 1000mb Z, and winds (knots) -- NCEP GFS



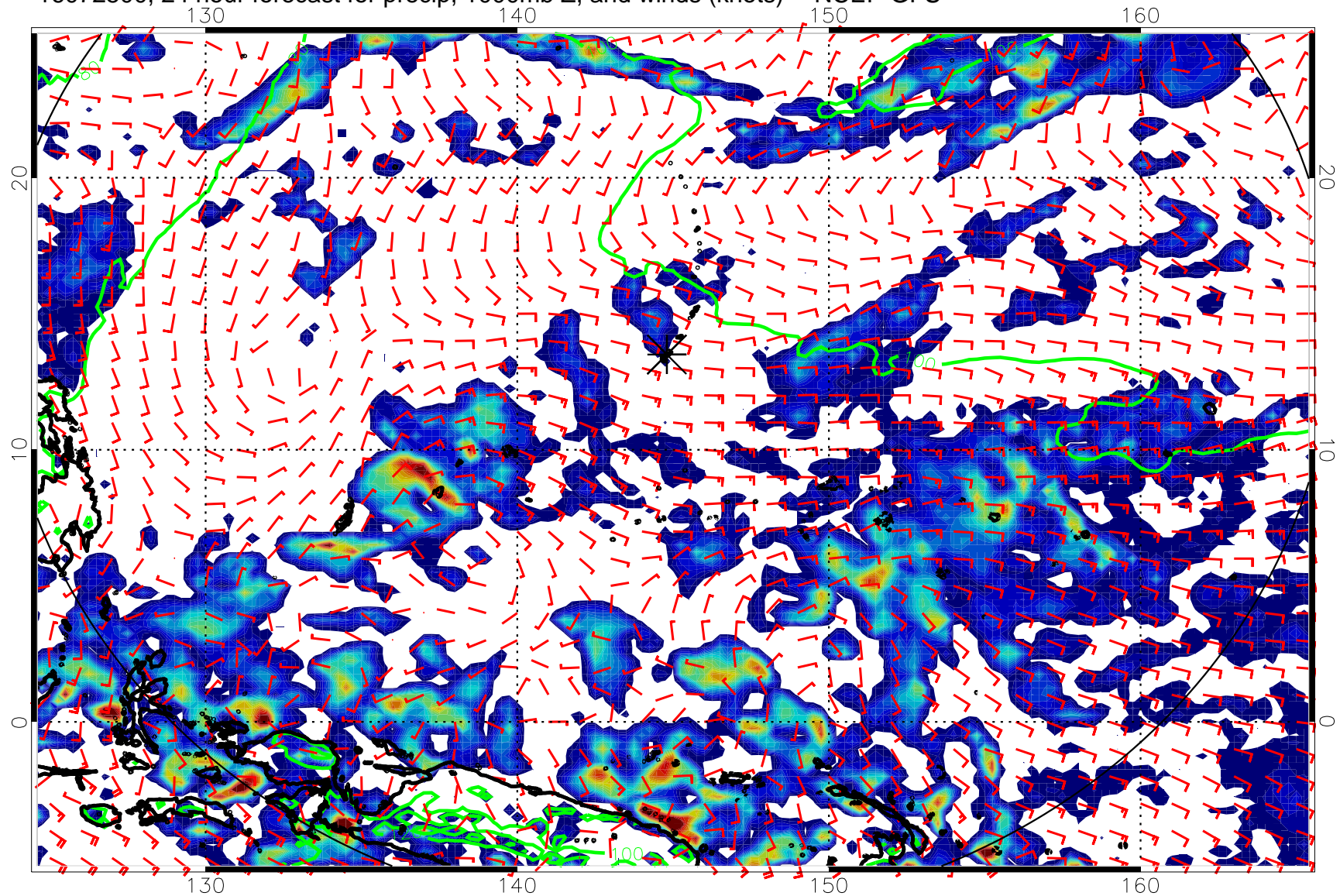
20 40 60 80
Precipitation, mm/day

16072418, 18 hour forecast for precip, 1000mb Z, and winds (knots) -- NCEP GFS



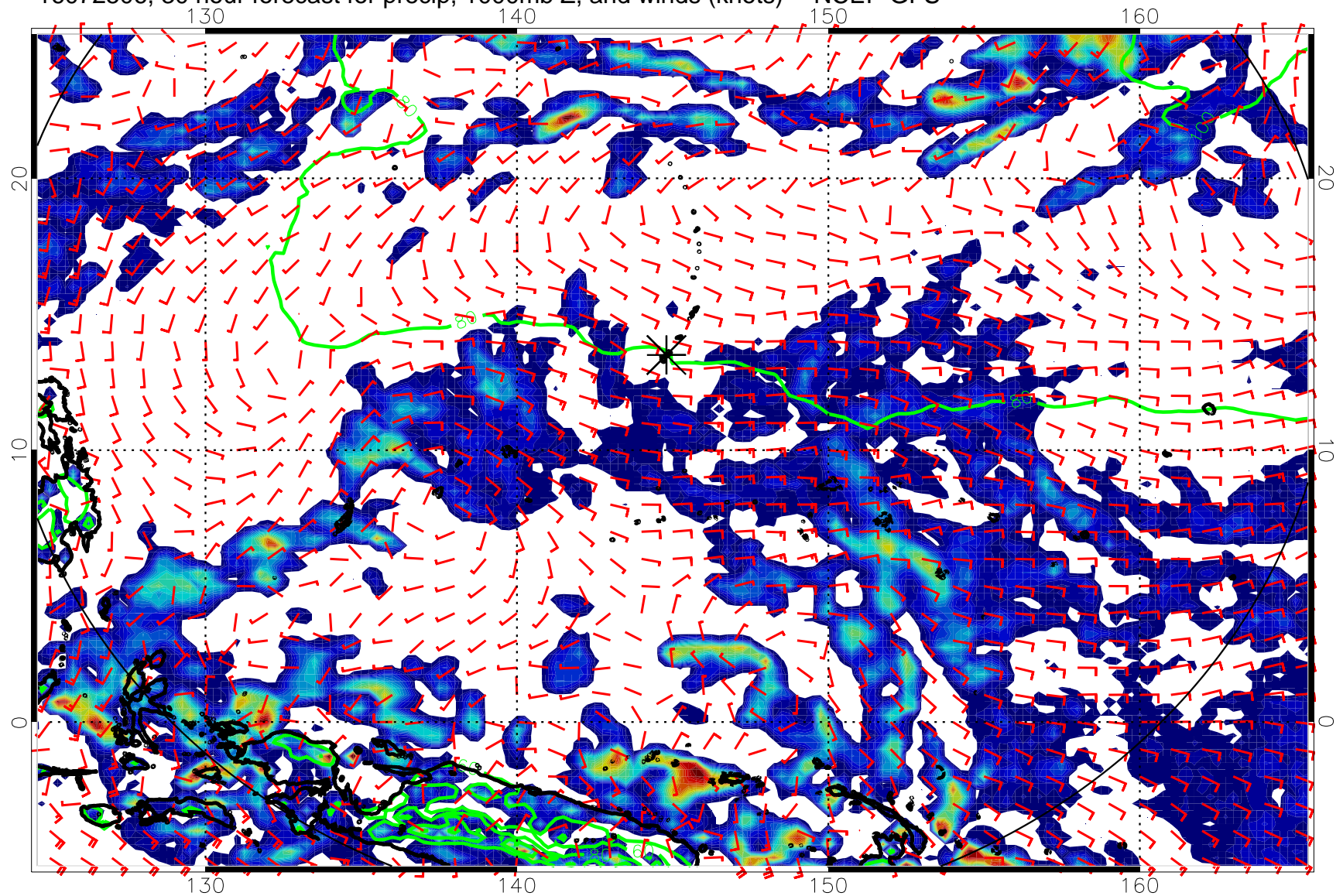
Precipitation, mm/day

16072500, 24 hour forecast for precip, 1000mb Z, and winds (knots) -- NCEP GFS



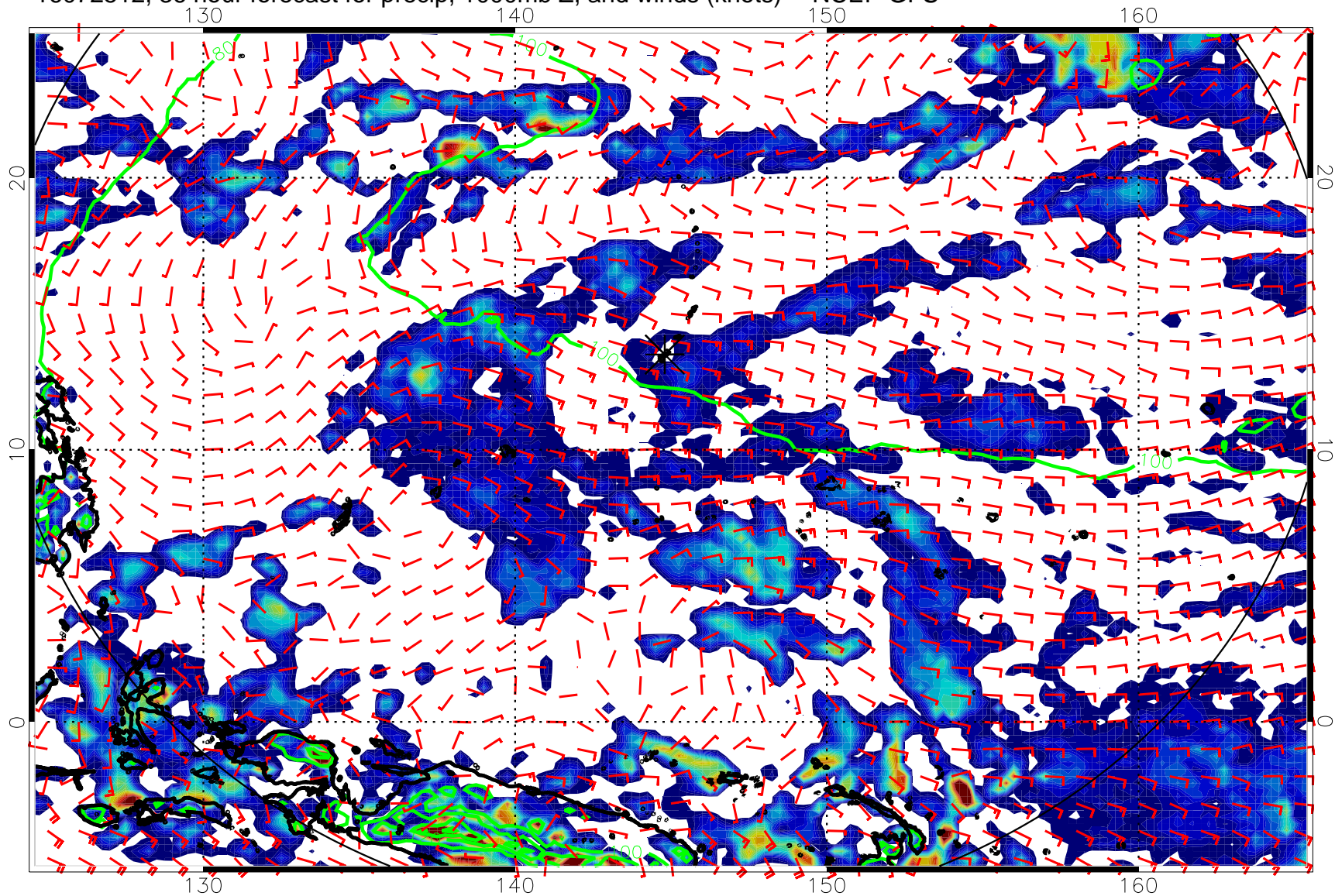
20 40 60 80
Precipitation, mm/day

16072506, 30 hour forecast for precip, 1000mb Z, and winds (knots) -- NCEP GFS



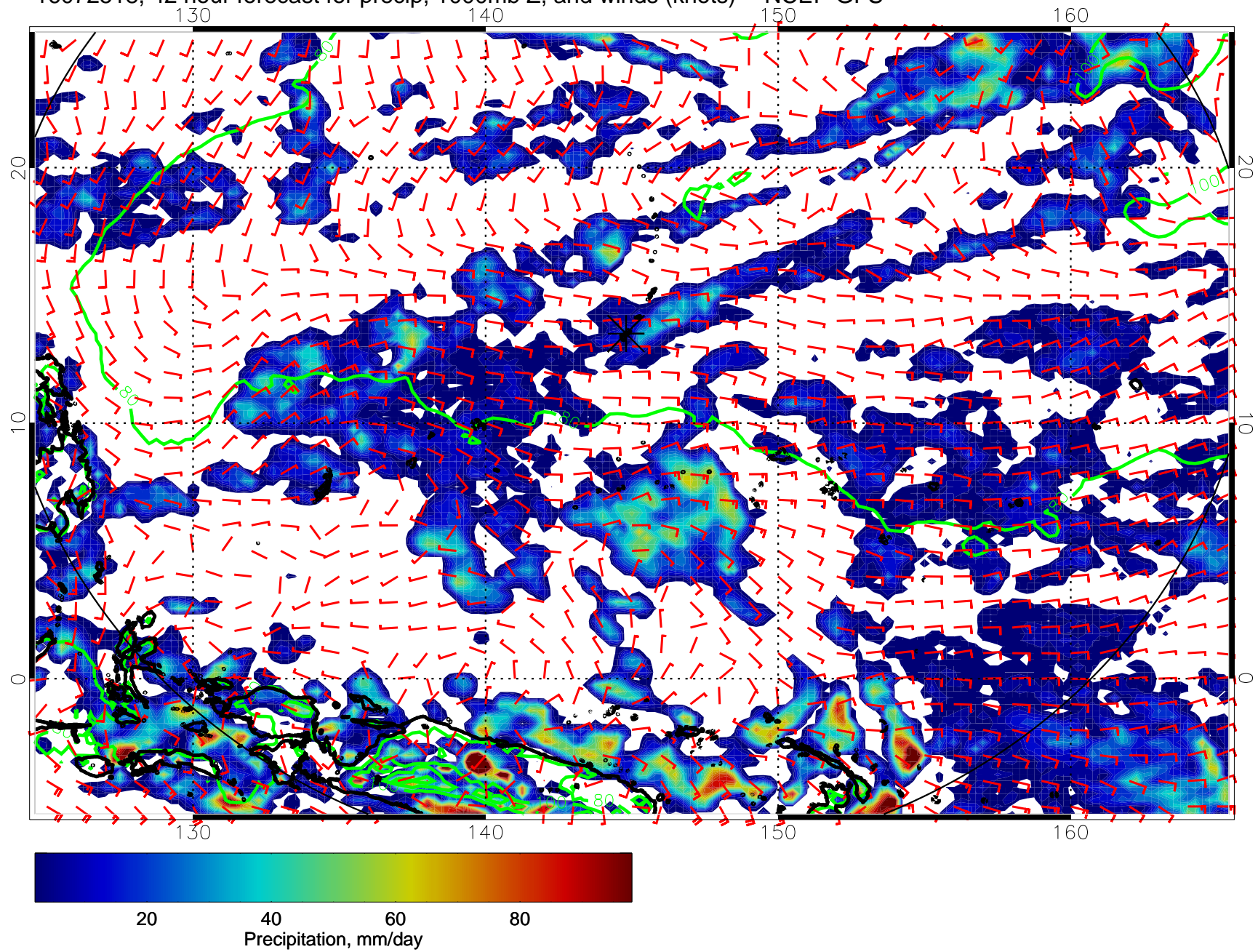
20 40 60 80
Precipitation, mm/day

16072512, 36 hour forecast for precip, 1000mb Z, and winds (knots) -- NCEP GFS

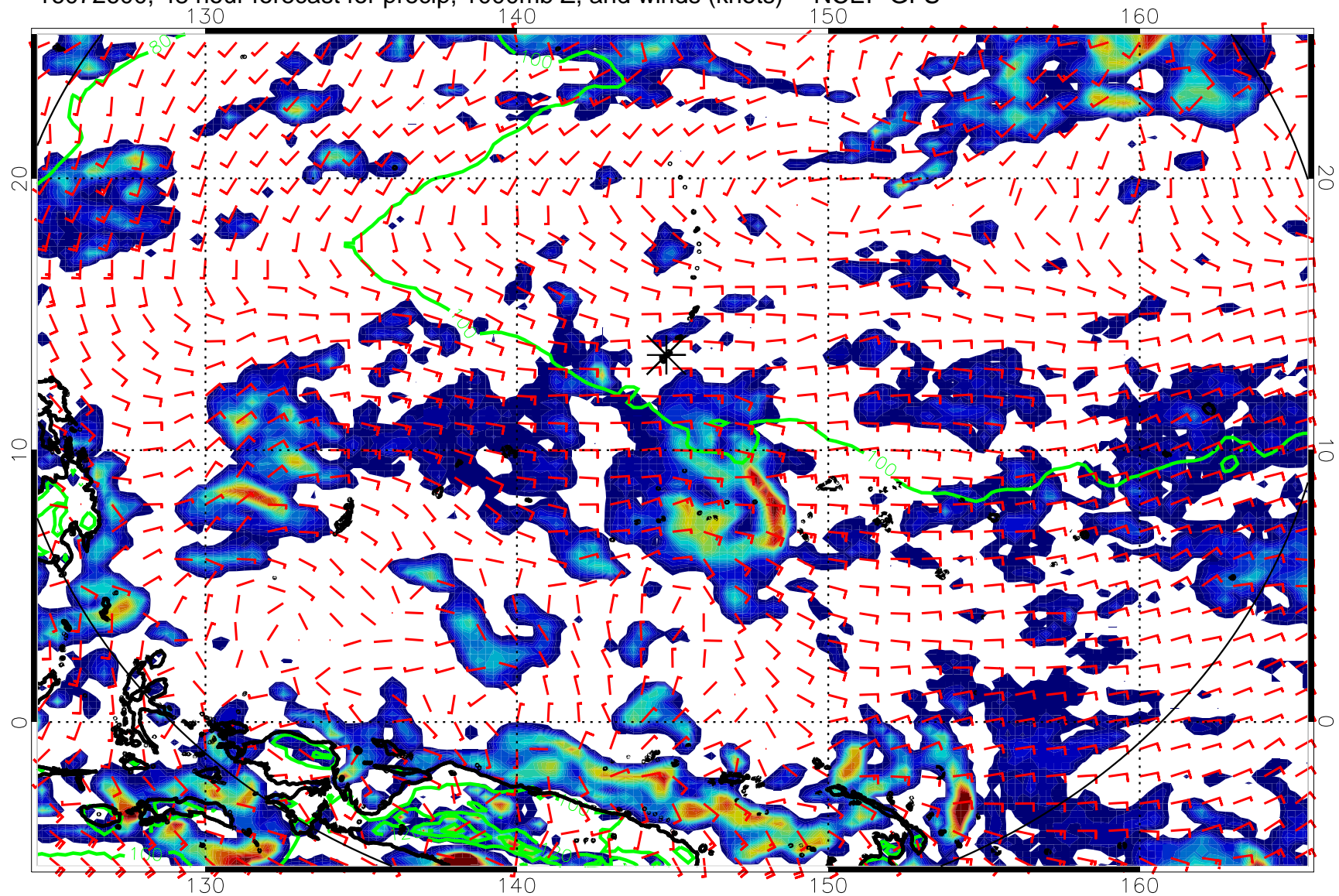


20 40 60 80
Precipitation, mm/day

16072518, 42 hour forecast for precip, 1000mb Z, and winds (knots) -- NCEP GFS

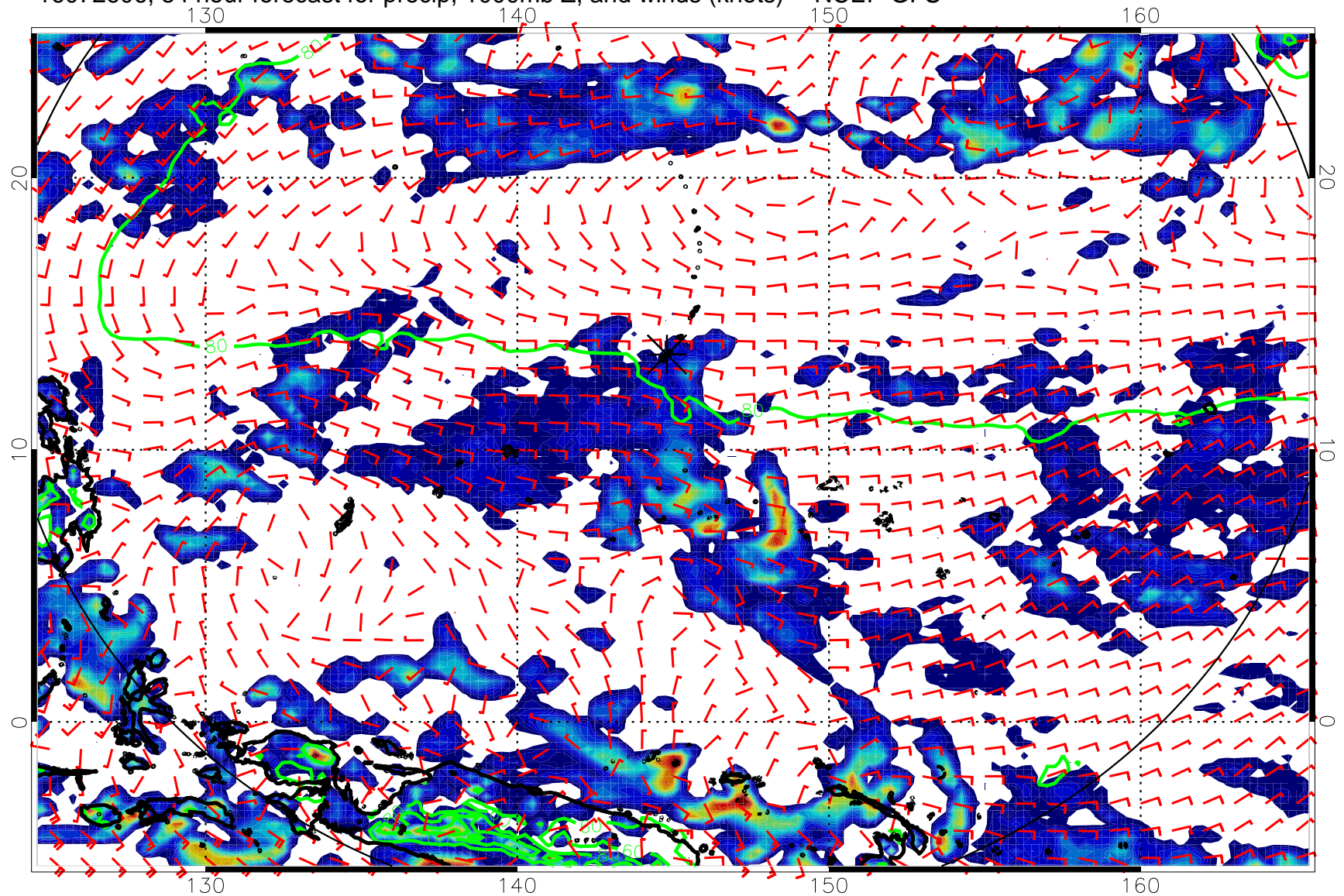


16072600, 48 hour forecast for precip, 1000mb Z, and winds (knots) -- NCEP GFS



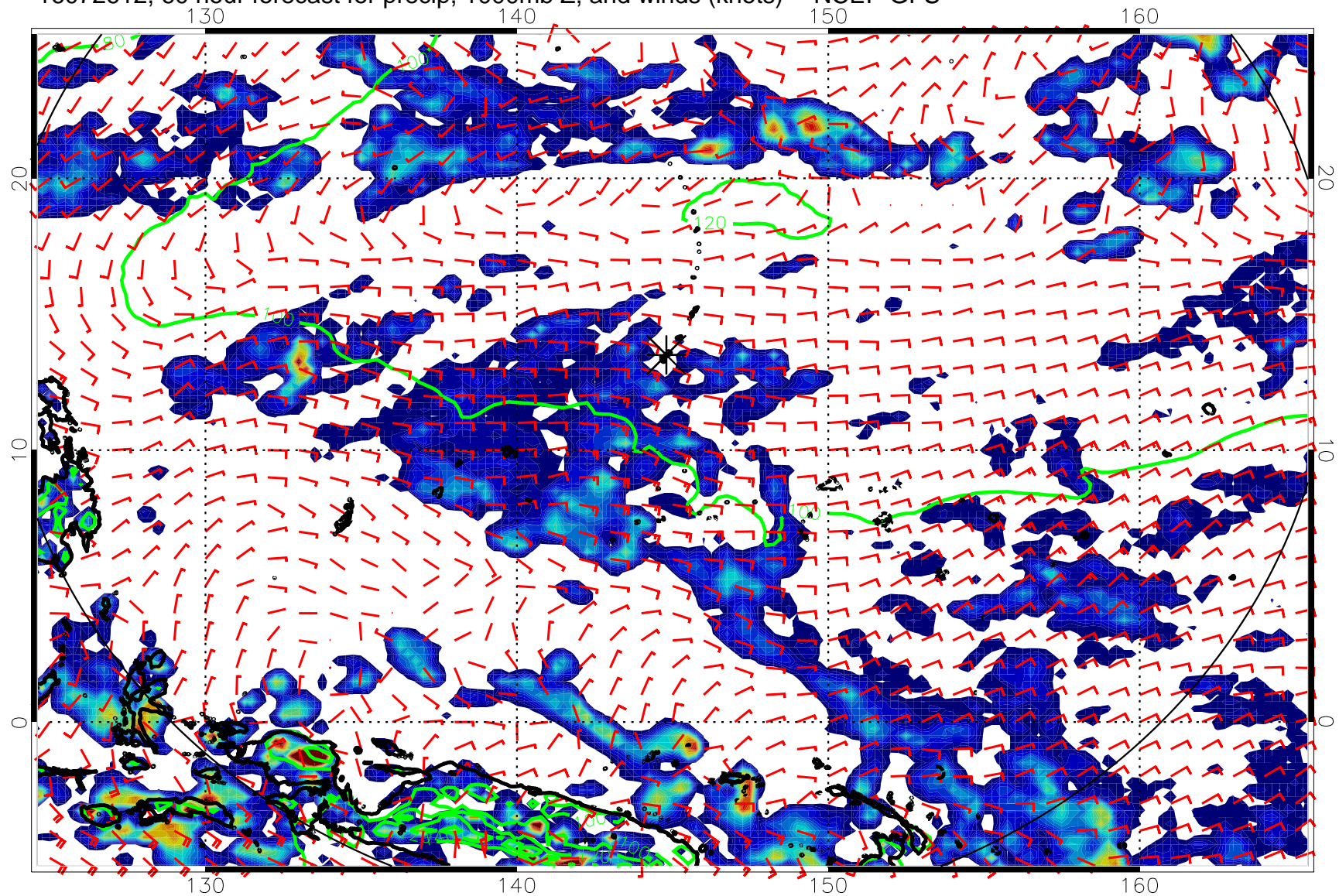
20 40 60 80
Precipitation, mm/day

16072606, 54 hour forecast for precip, 1000mb Z, and winds (knots) -- NCEP GFS



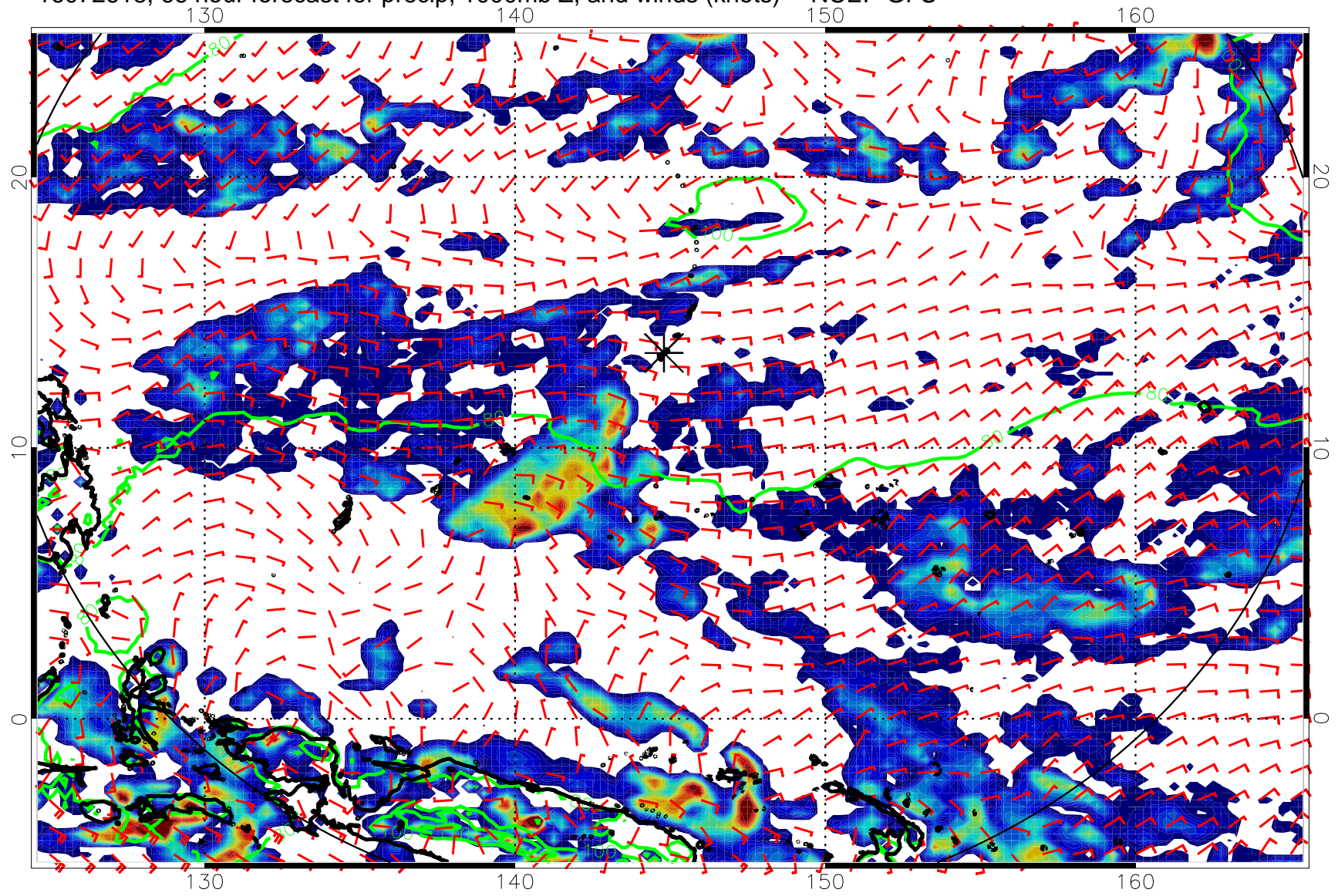
Precipitation, mm/day

16072612, 60 hour forecast for precip, 1000mb Z, and winds (knots) -- NCEP GFS



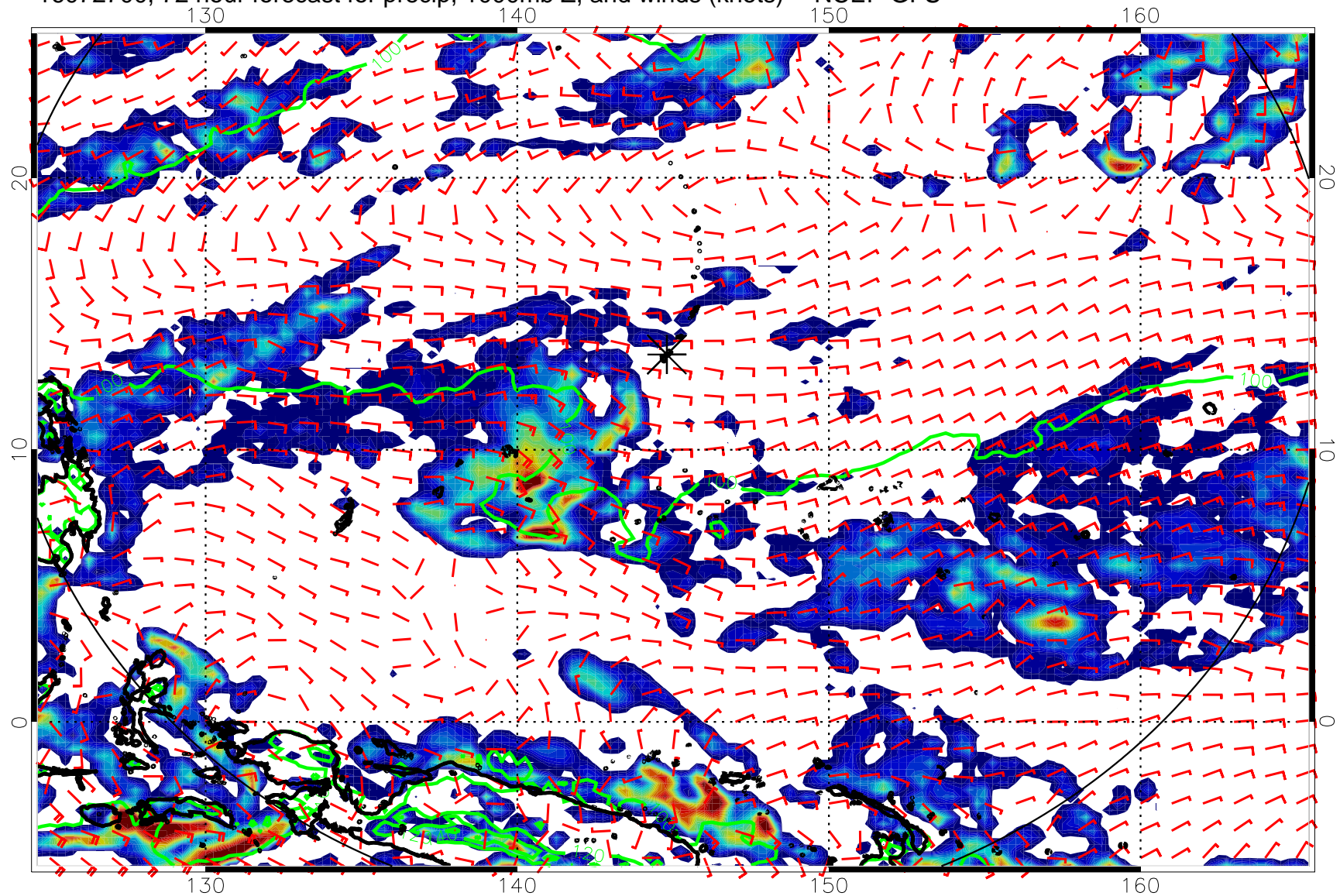
20 40 60 80
Precipitation, mm/day

16072618, 66 hour forecast for precip, 1000mb Z, and winds (knots) -- NCEP GFS



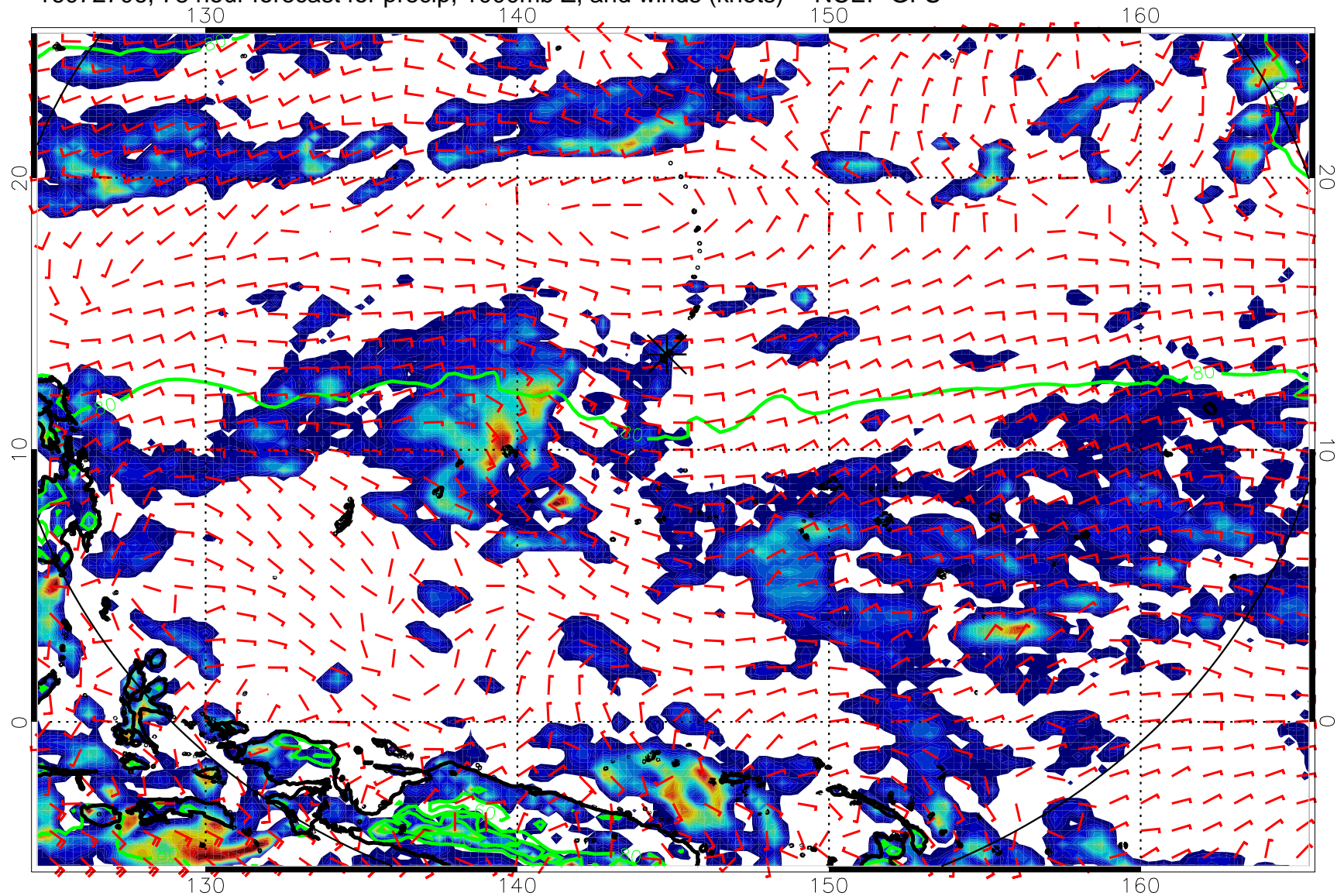
20 40 60 80
Precipitation, mm/day

16072700, 72 hour forecast for precip, 1000mb Z, and winds (knots) -- NCEP GFS



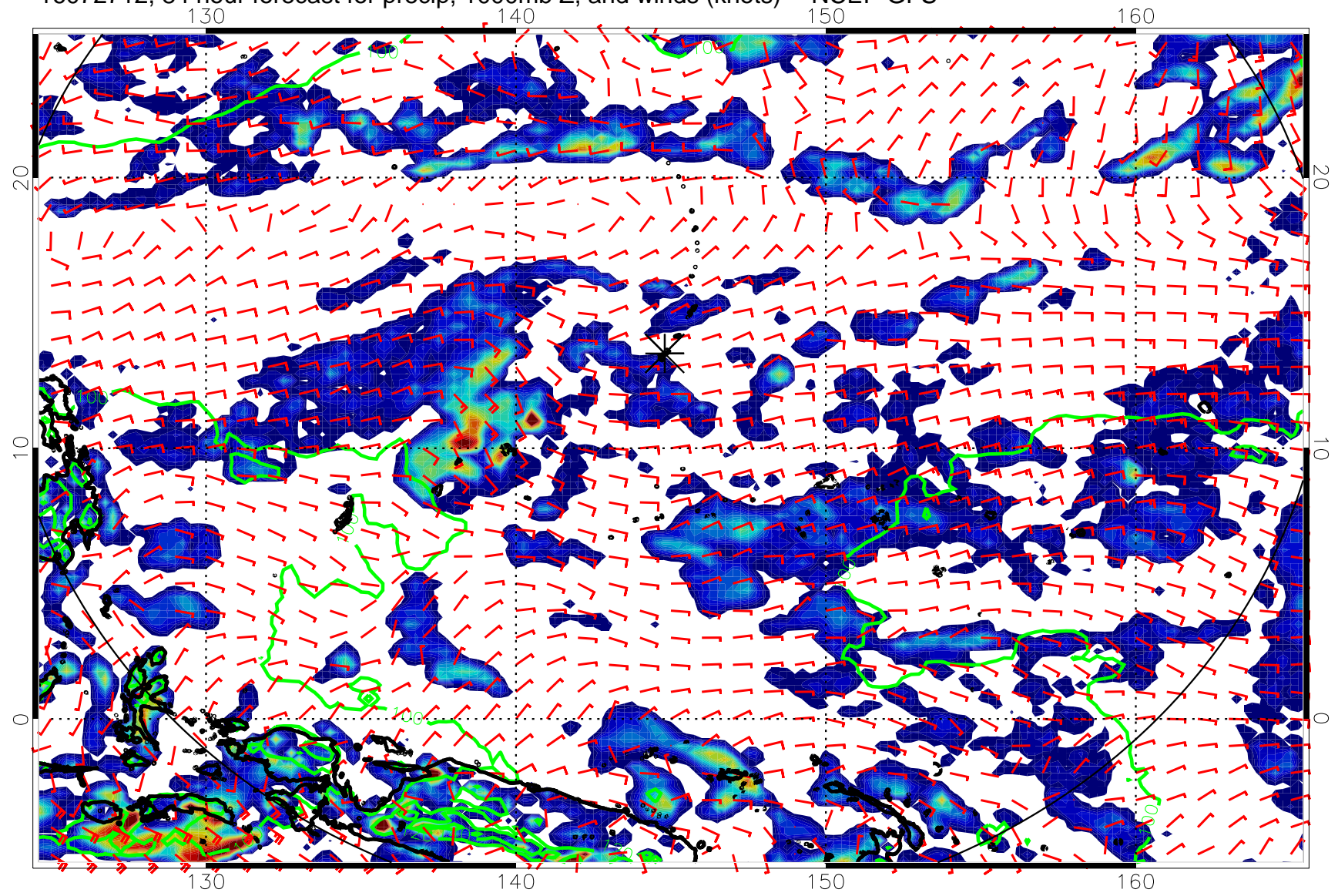
20 40 60 80
Precipitation, mm/day

16072706, 78 hour forecast for precip, 1000mb Z, and winds (knots) -- NCEP GFS



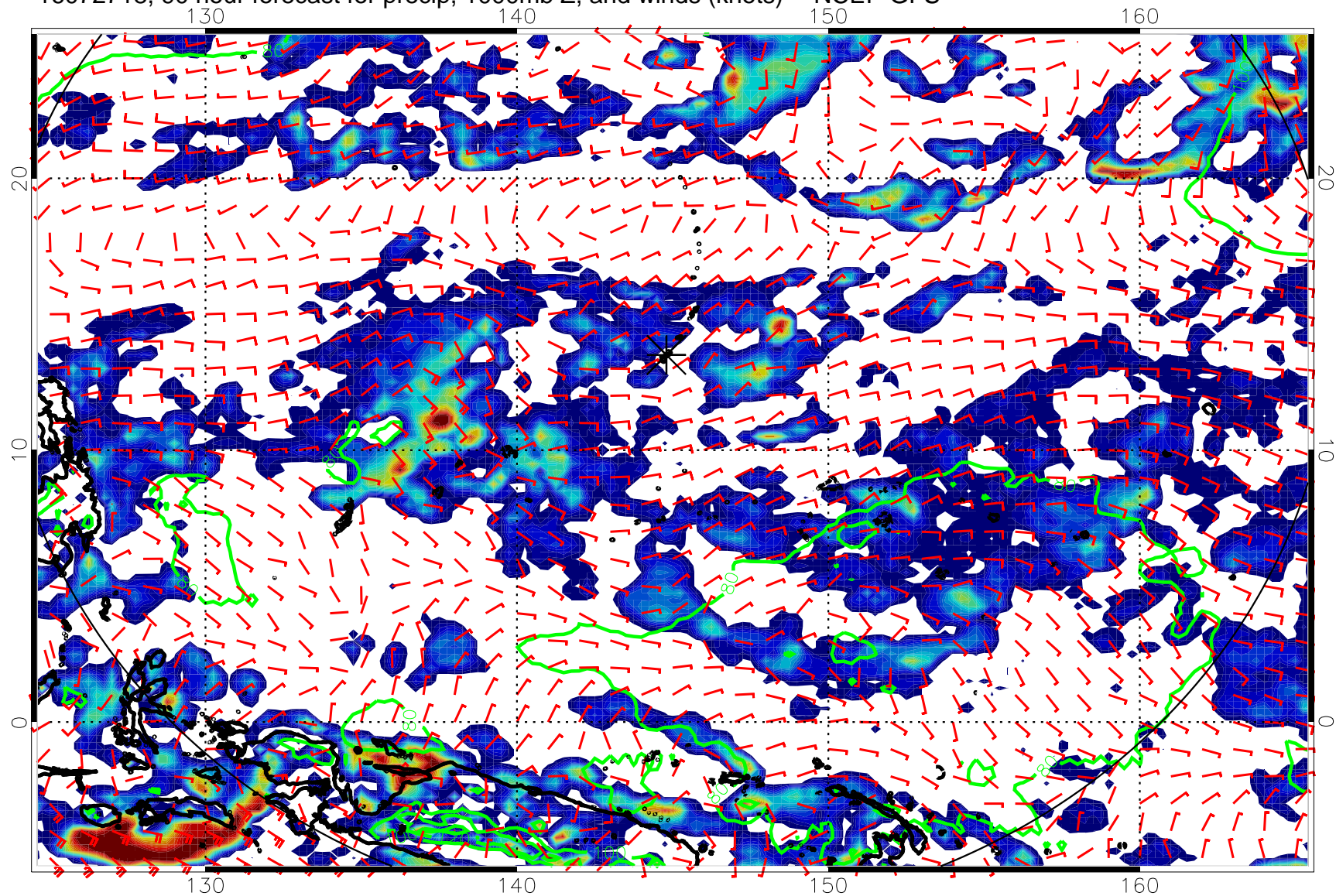
20 40 60 80
Precipitation, mm/day

16072712, 84 hour forecast for precip, 1000mb Z, and winds (knots) -- NCEP GFS



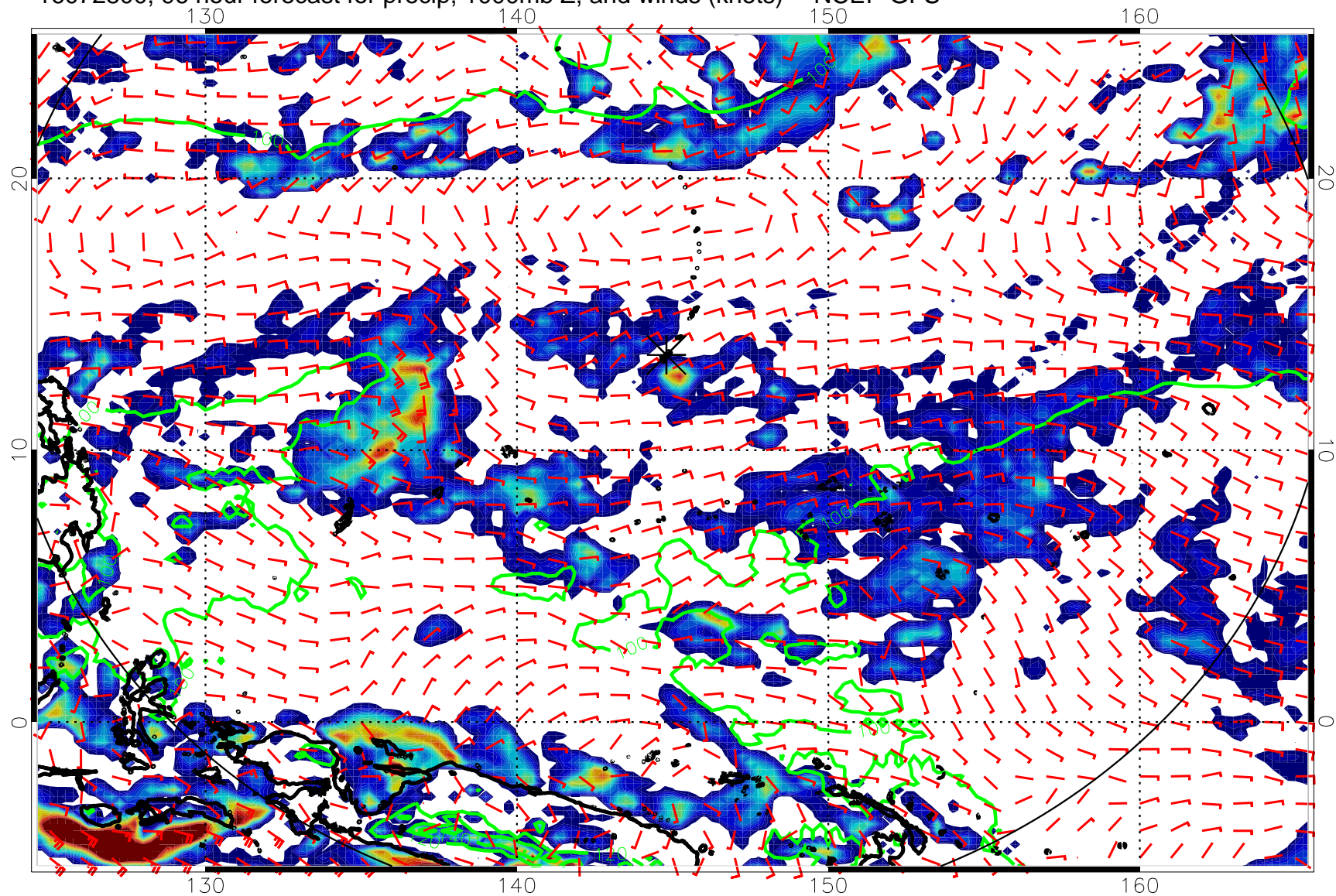
20 40 60 80
Precipitation, mm/day

16072718, 90 hour forecast for precip, 1000mb Z, and winds (knots) -- NCEP GFS



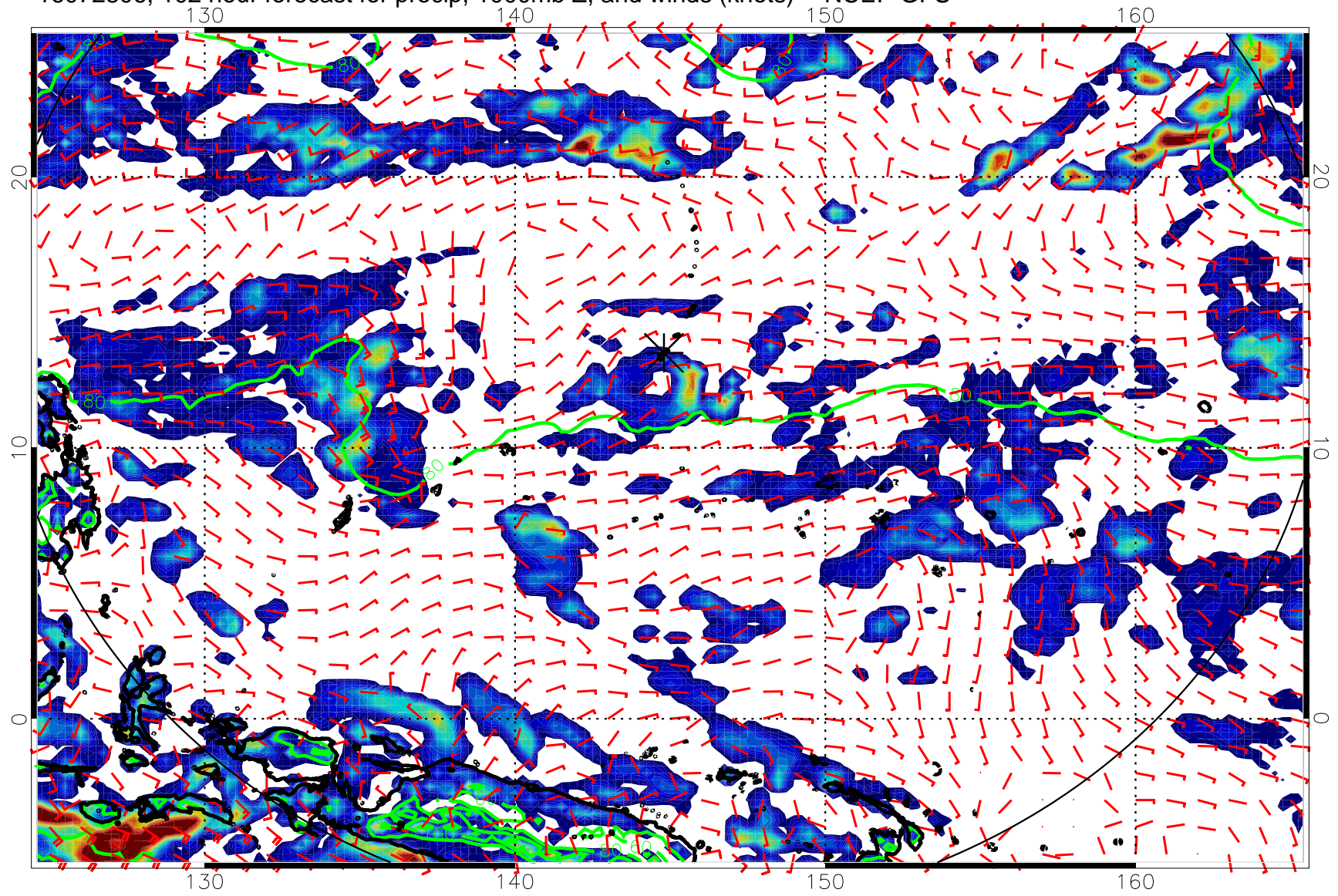
20 40 60 80
Precipitation, mm/day

16072800, 96 hour forecast for precip, 1000mb Z, and winds (knots) -- NCEP GFS



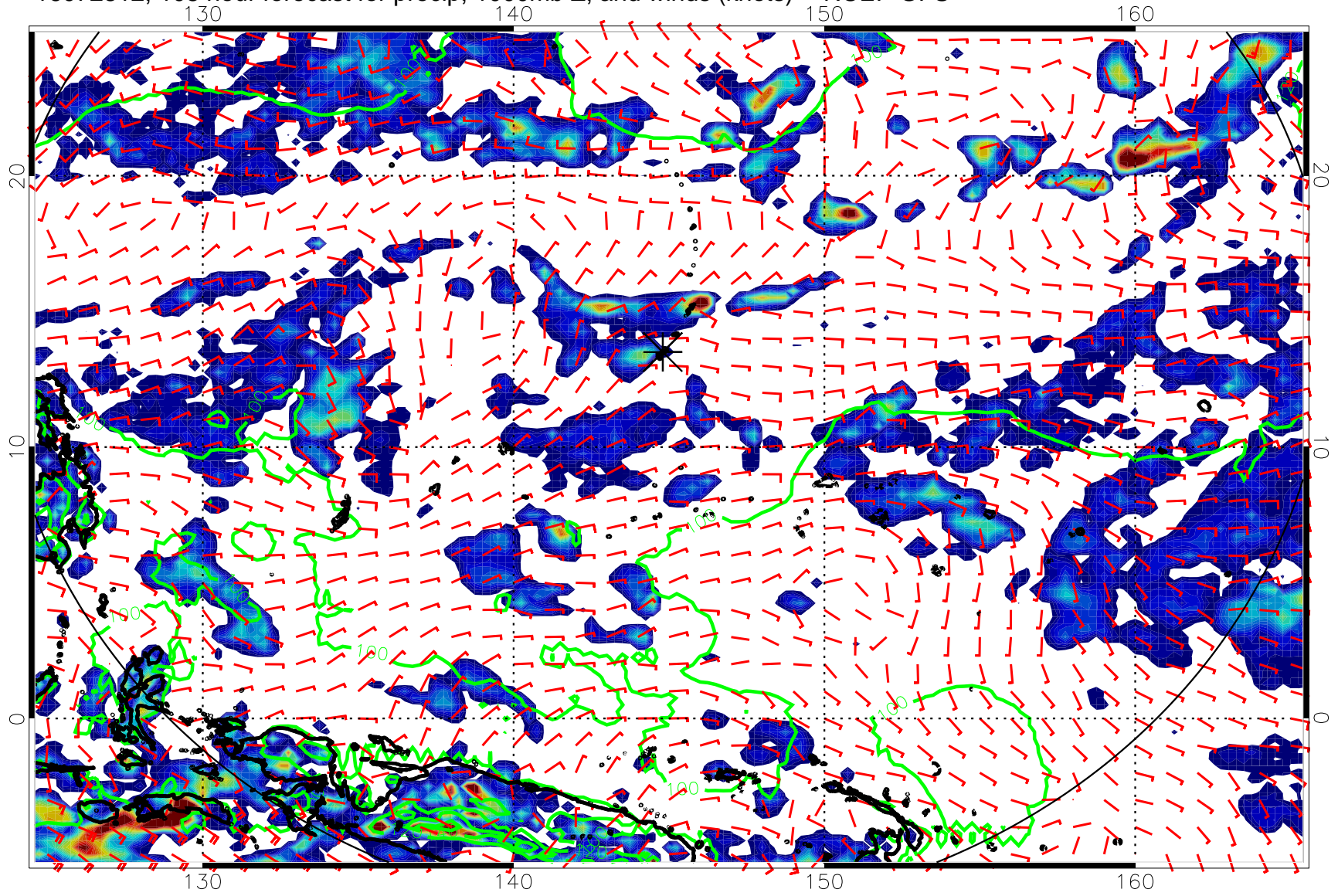
20 40 60 80
Precipitation, mm/day

16072806, 102 hour forecast for precip, 1000mb Z, and winds (knots) -- NCEP GFS



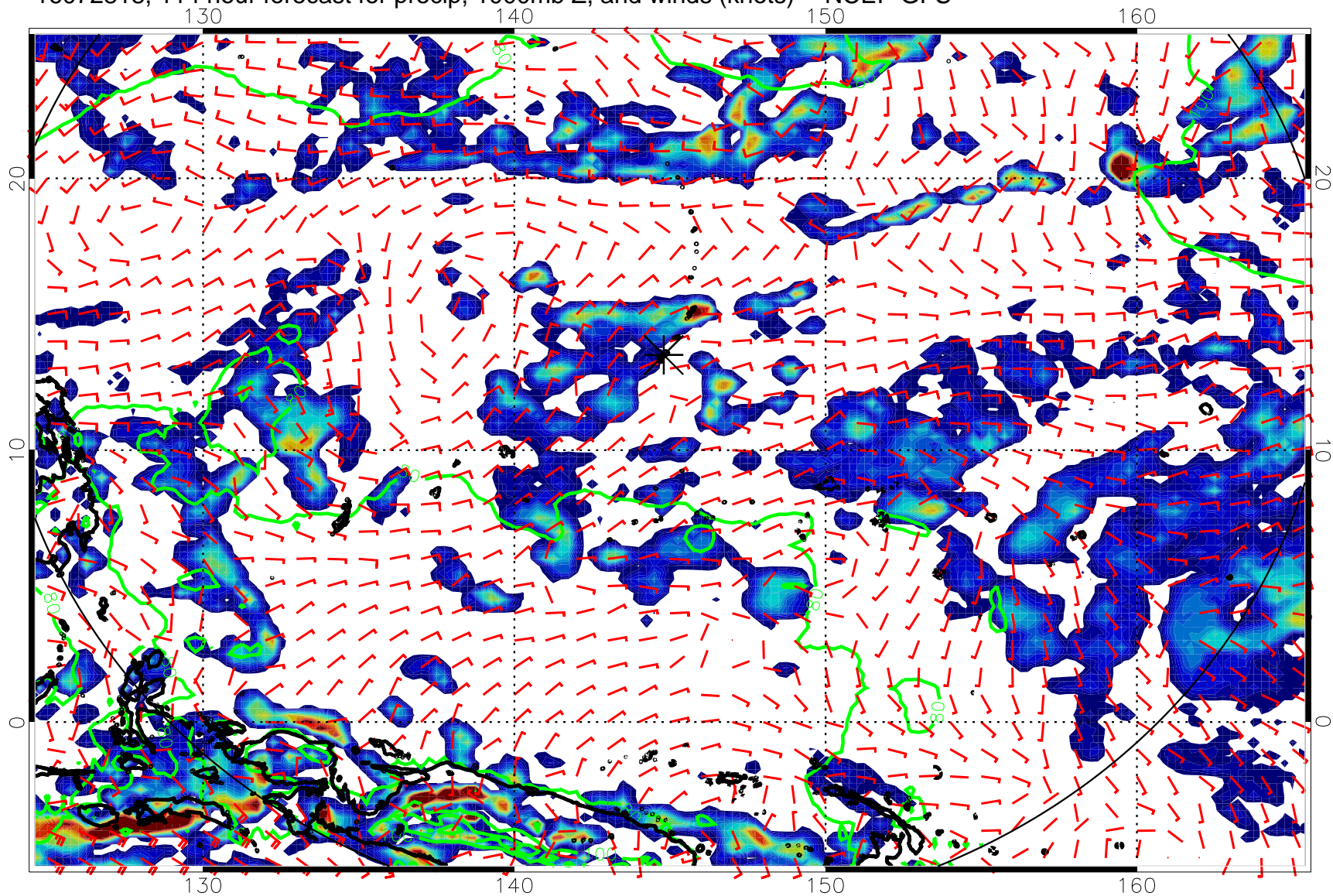
20 40 60 80
Precipitation, mm/day

16072812, 108 hour forecast for precip, 1000mb Z, and winds (knots) -- NCEP GFS



20 40 60 80
Precipitation, mm/day

16072818, 114 hour forecast for precip, 1000mb Z, and winds (knots) -- NCEP GFS



20 40 60 80
Precipitation, mm/day

16072900, 120 hour forecast for precip, 1000mb Z, and winds (knots) -- NCEP GFS

