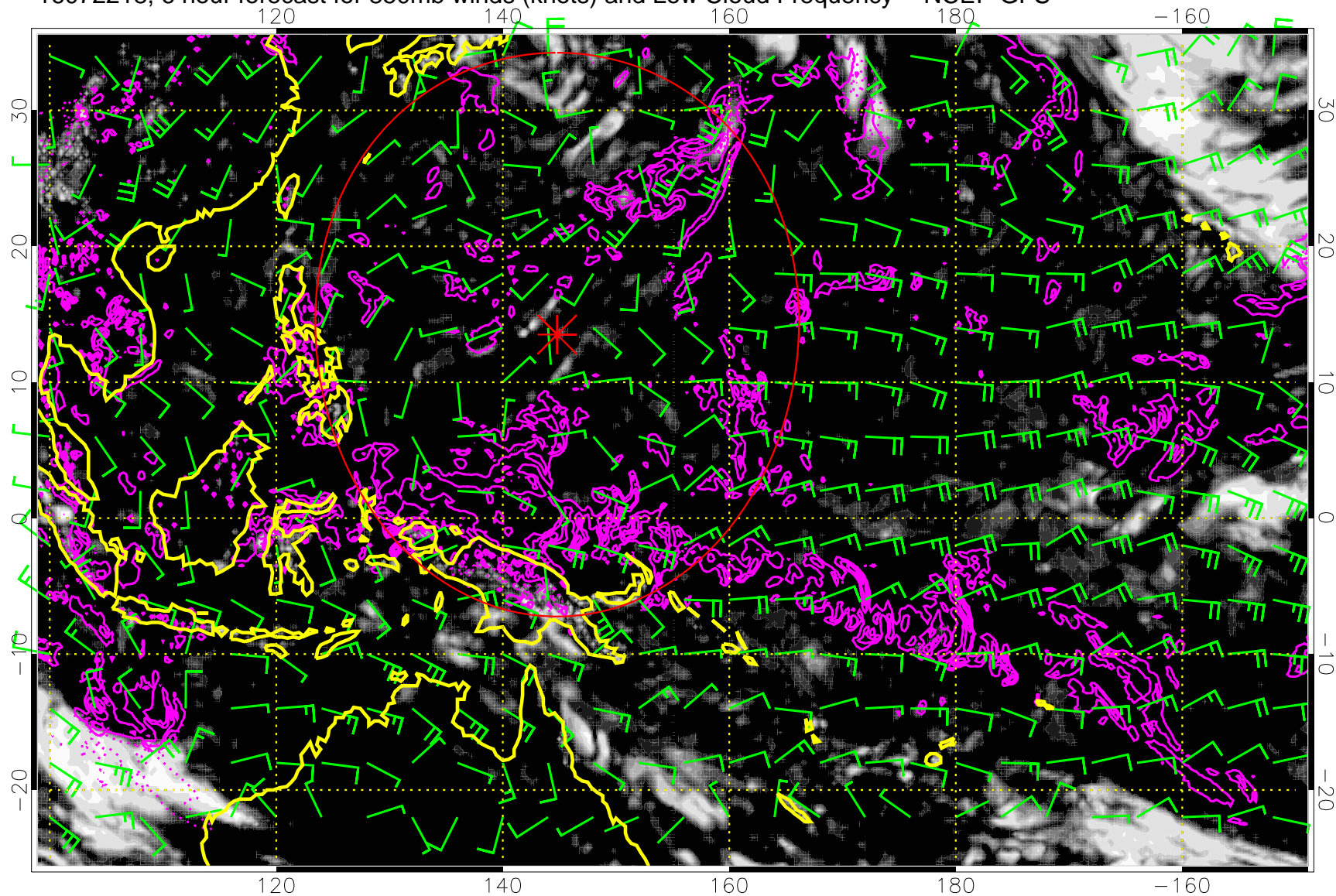


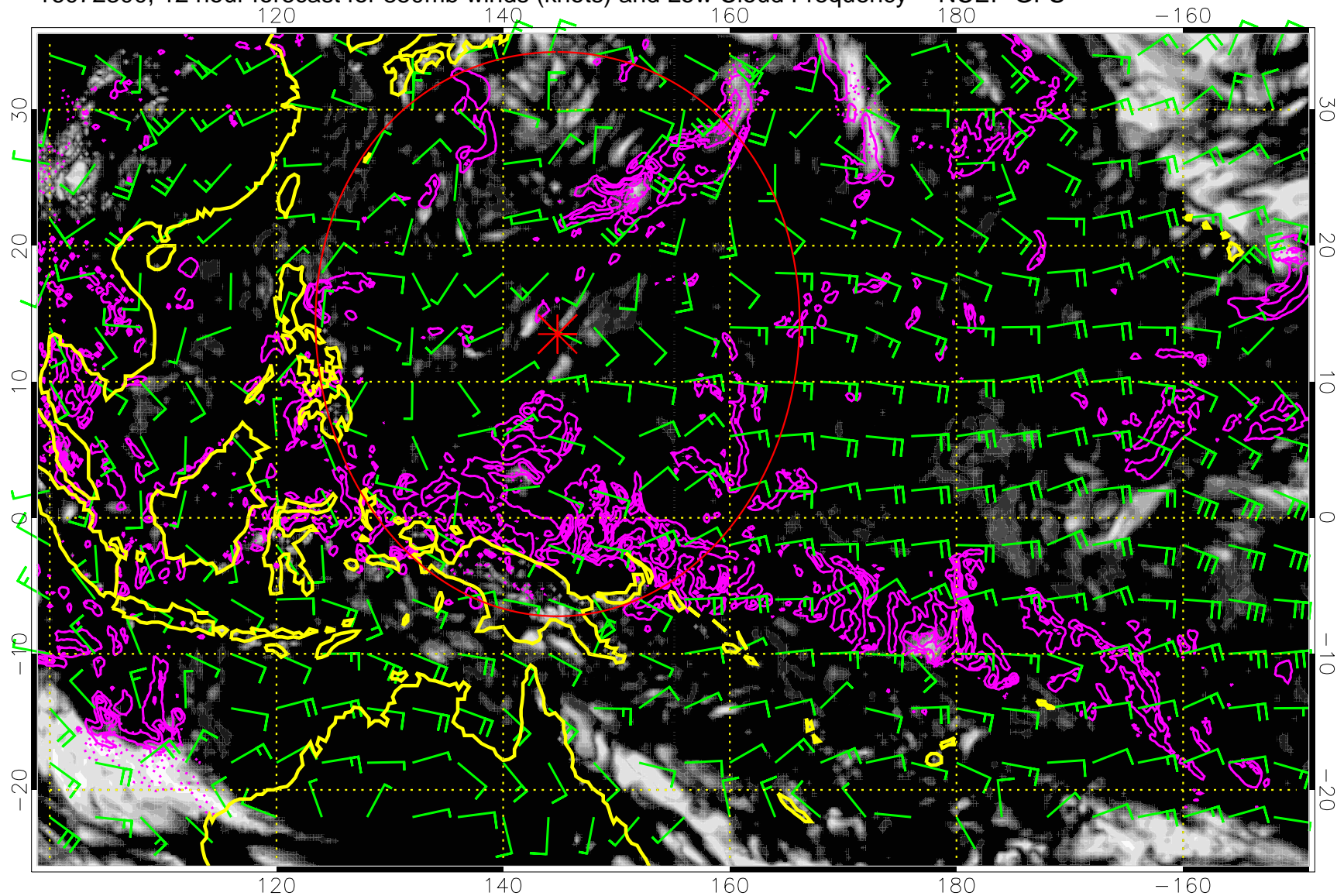
16072218, 6 hour forecast for 850mb winds (knots) and Low Cloud Frequency -- NCEP GFS



Precip (tot dot, conv sol) mm/day 40 mm/day contours, min 20

Range ring of 2304 km

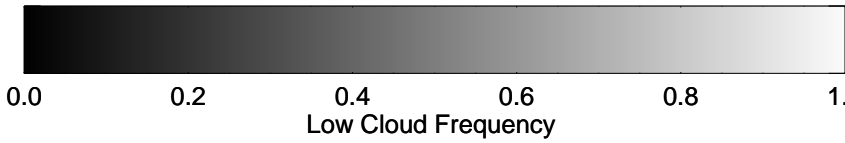
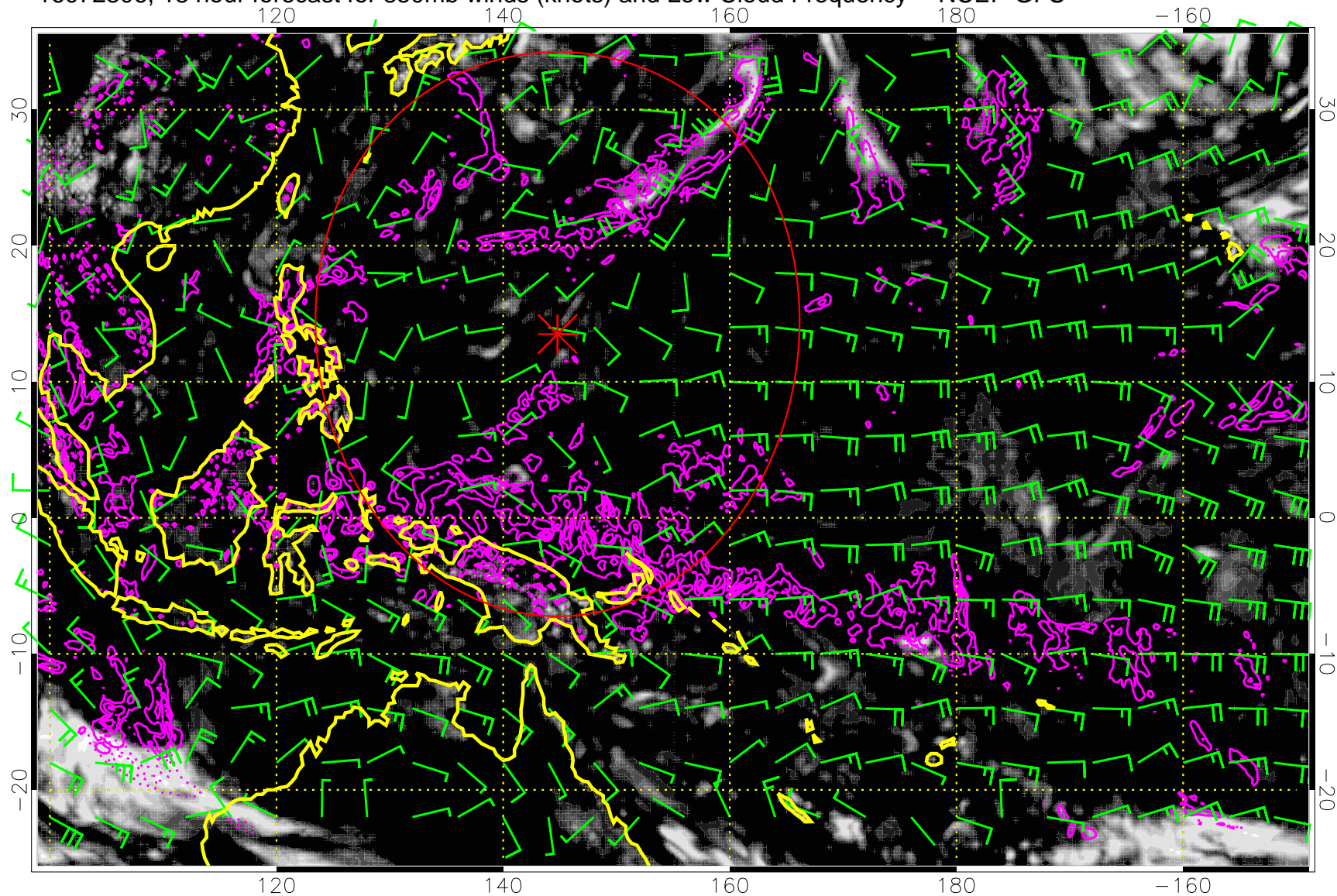
16072300, 12 hour forecast for 850mb winds (knots) and Low Cloud Frequency -- NCEP GFS



Precip (tot dot, conv sol) mm/day 40 mm/day contours, min 20

Range ring of 2304 km

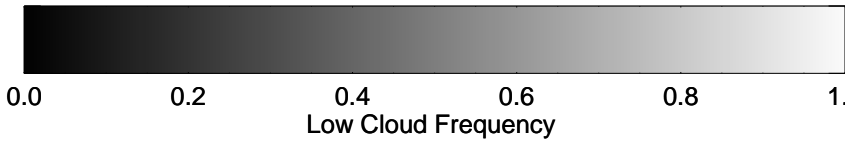
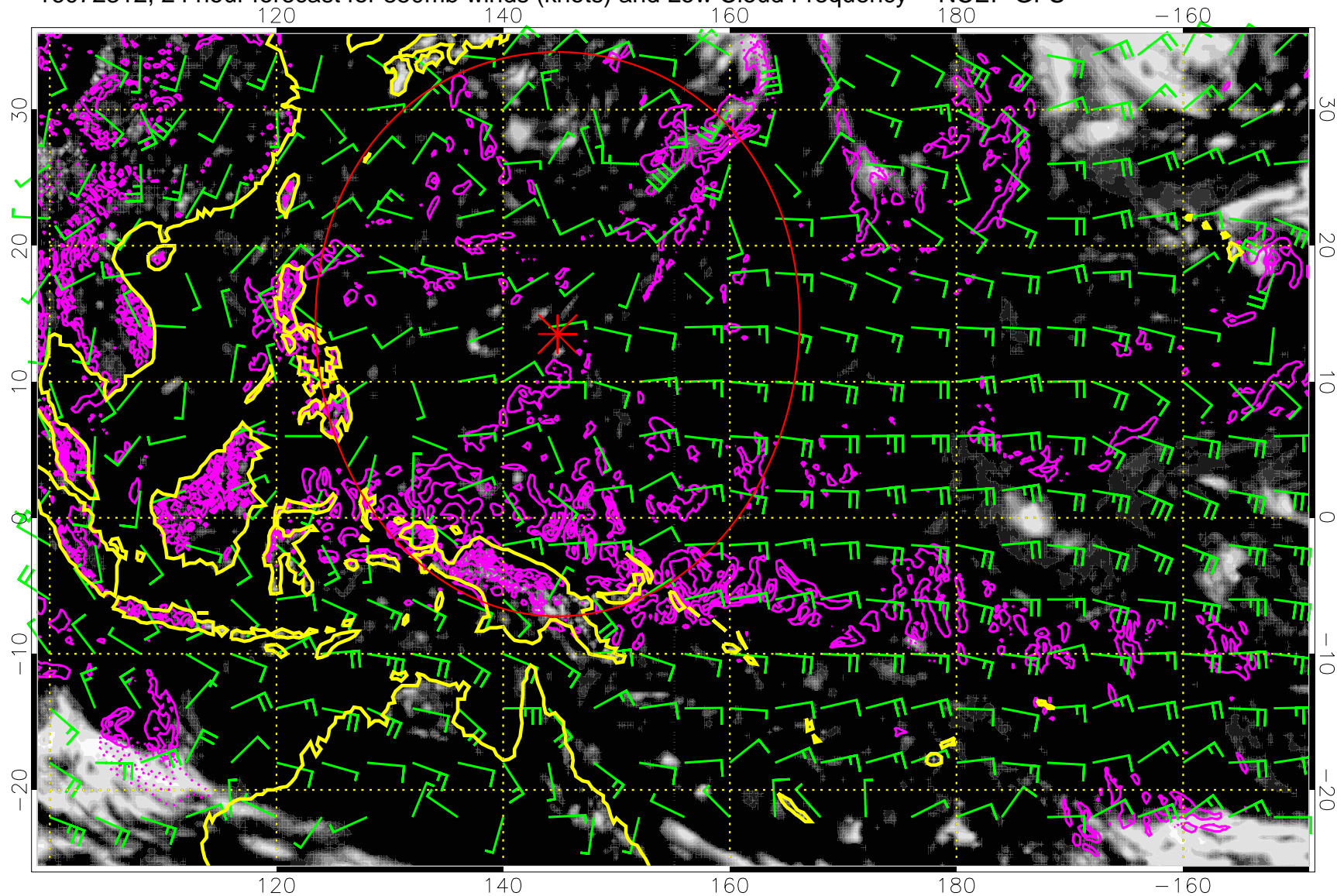
16072306, 18 hour forecast for 850mb winds (knots) and Low Cloud Frequency -- NCEP GFS



Precip (tot dot, conv sol) mm/day 40 mm/day contours, min 20

Range ring of 2304 km

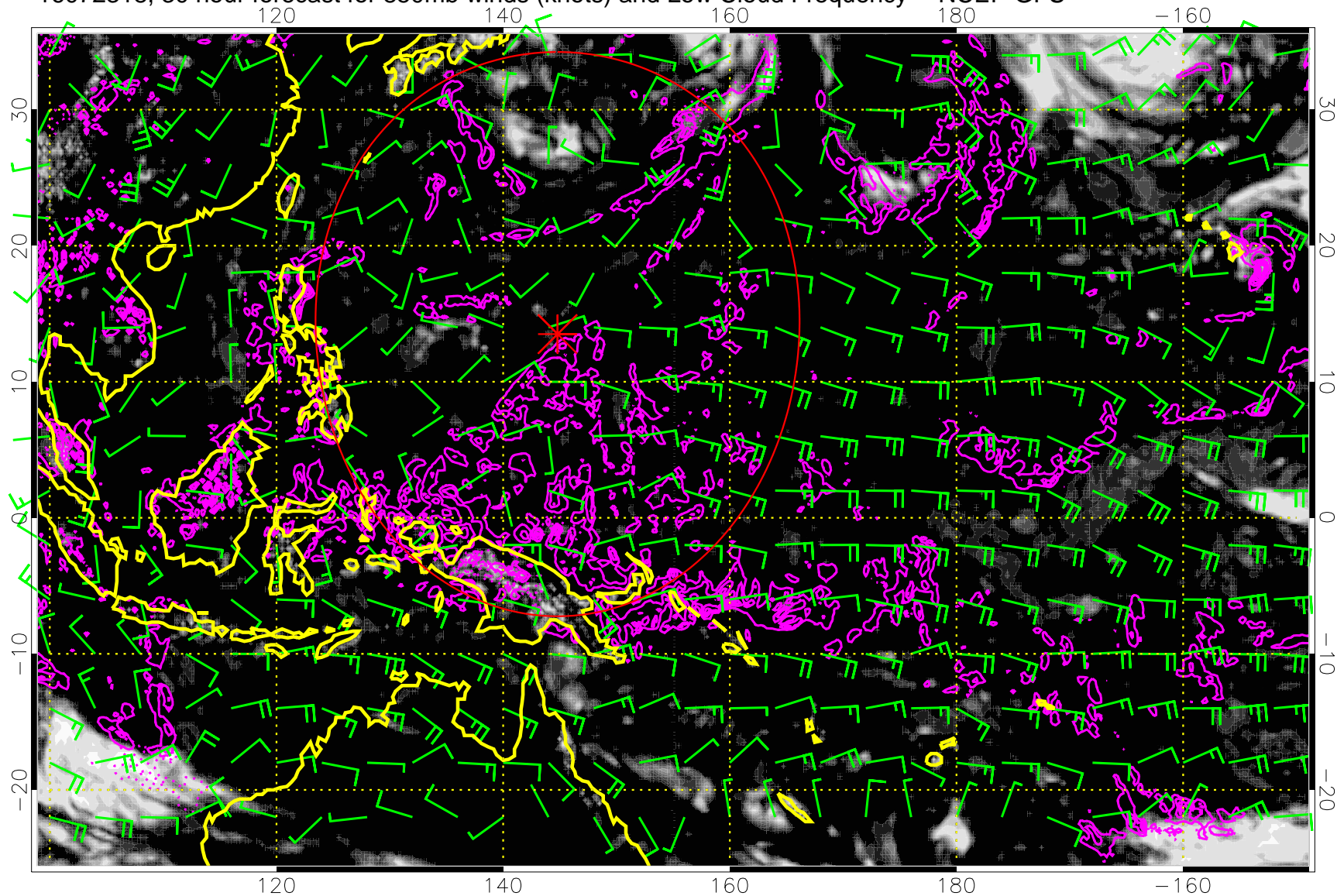
16072312, 24 hour forecast for 850mb winds (knots) and Low Cloud Frequency -- NCEP GFS



Precip (tot dot, conv sol) mm/day 40 mm/day contours, min 20

Range ring of 2304 km

16072318, 30 hour forecast for 850mb winds (knots) and Low Cloud Frequency -- NCEP GFS

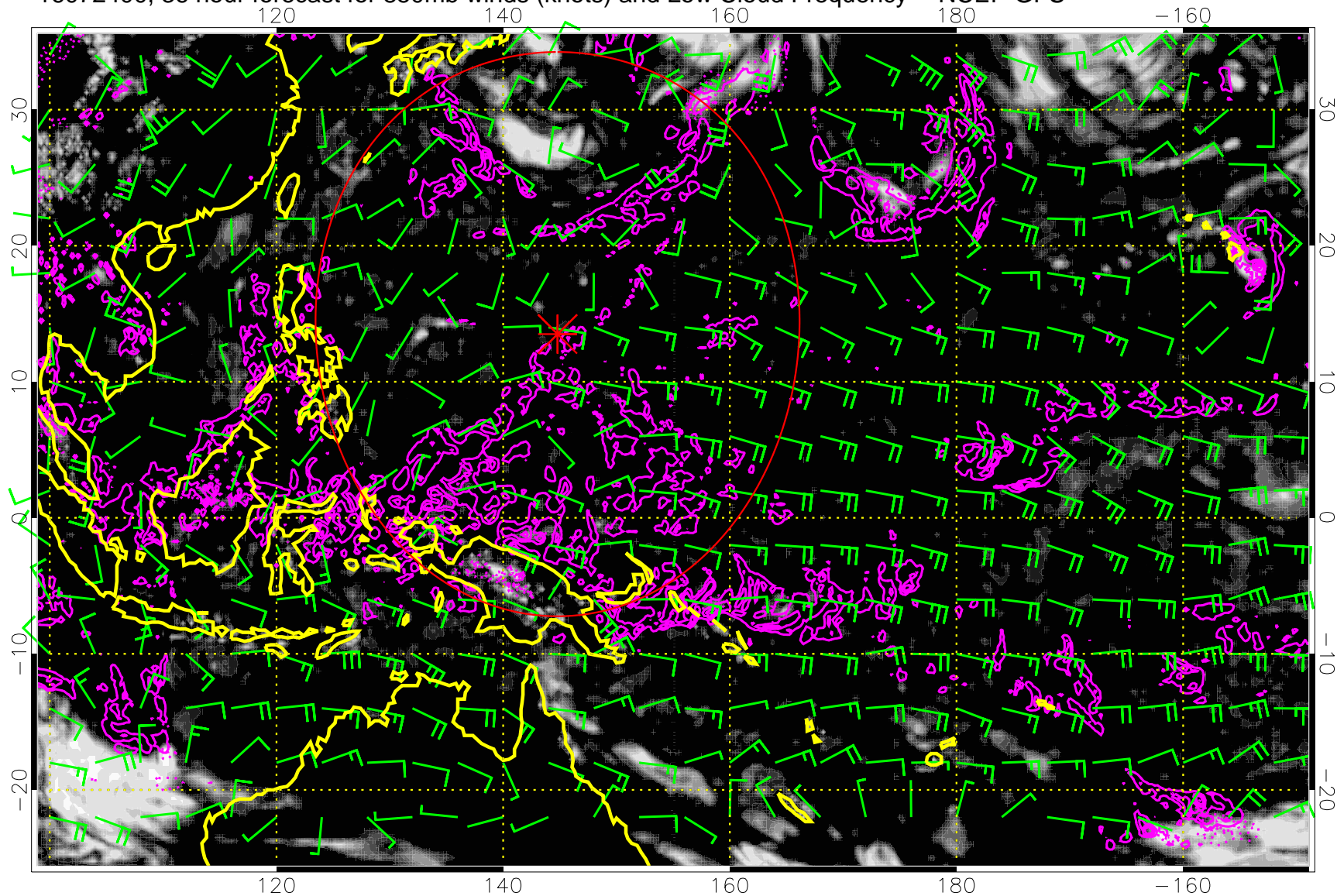


0.0 0.2 0.4 0.6 0.8 1.0
Low Cloud Frequency

Precip (tot dot, conv sol) mm/day 40 mm/day contours, min 20

Range ring of 2304 km

16072400, 36 hour forecast for 850mb winds (knots) and Low Cloud Frequency -- NCEP GFS

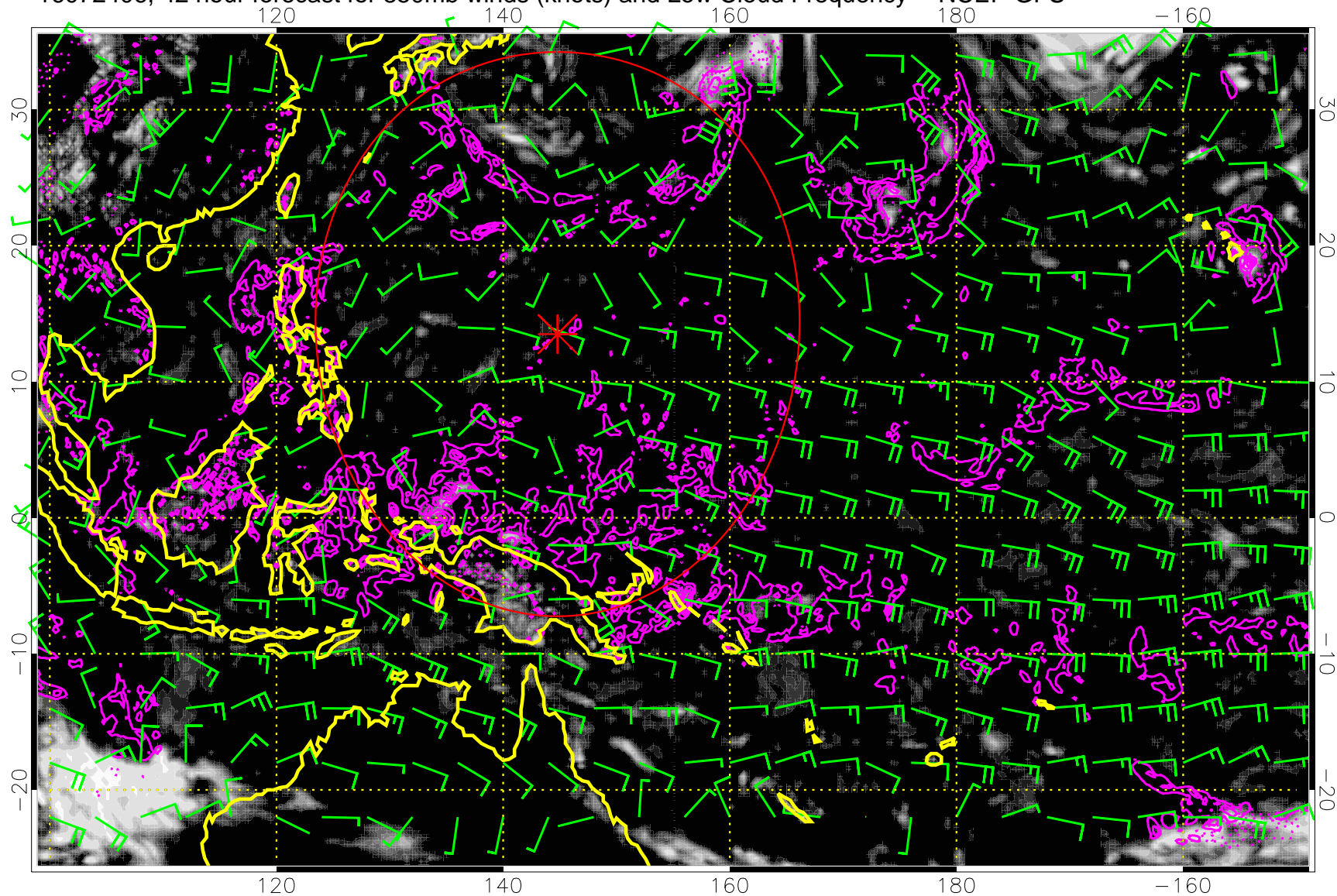


0.0 0.2 0.4 0.6 0.8 1.0
Low Cloud Frequency

Precip (tot dot, conv sol) mm/day 40 mm/day contours, min 20

Range ring of 2304 km

16072406, 42 hour forecast for 850mb winds (knots) and Low Cloud Frequency -- NCEP GFS

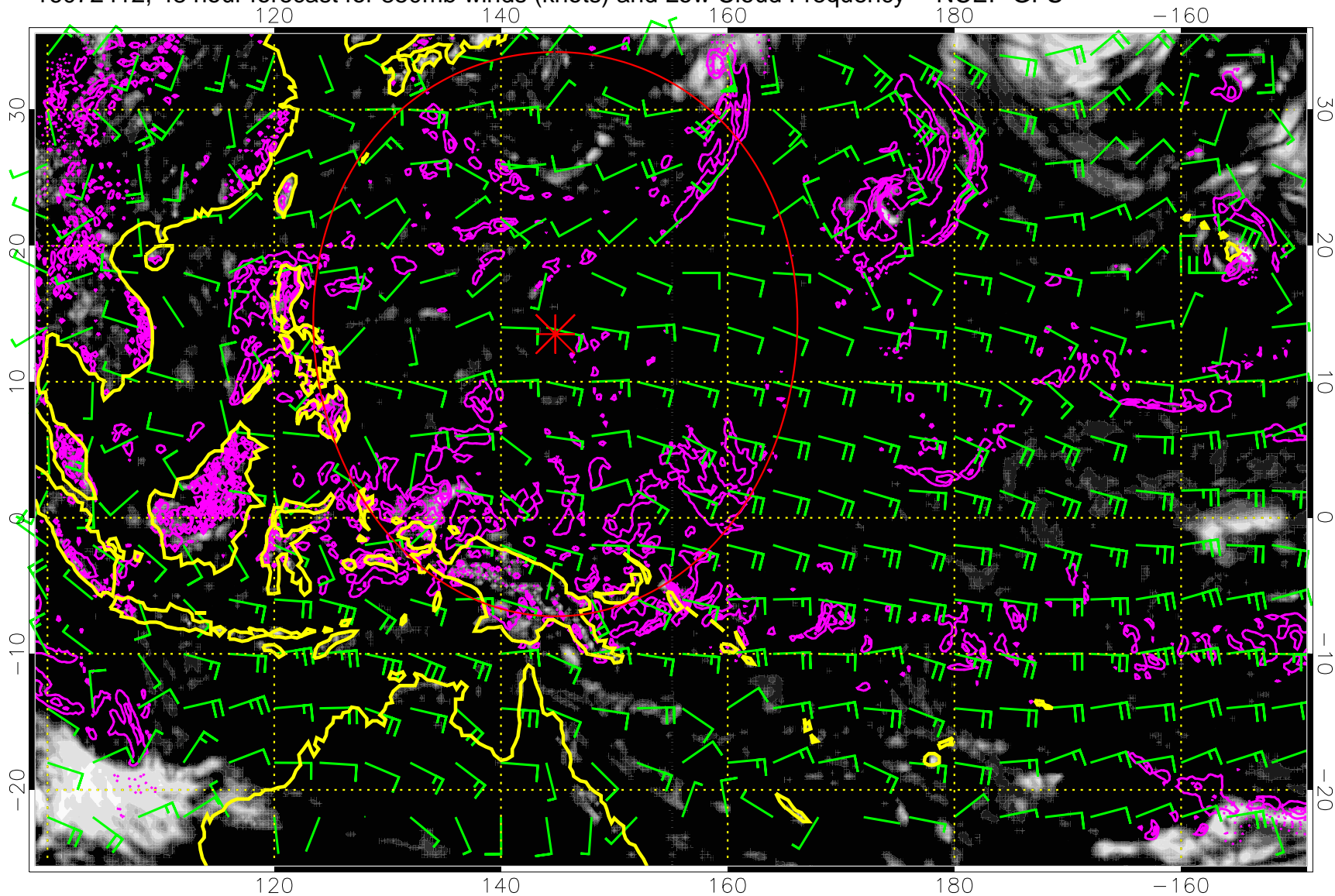


0.0 0.2 0.4 0.6 0.8 1.0
Low Cloud Frequency

Precip (tot dot, conv sol) mm/day 40 mm/day contours, min 20

Range ring of 2304 km

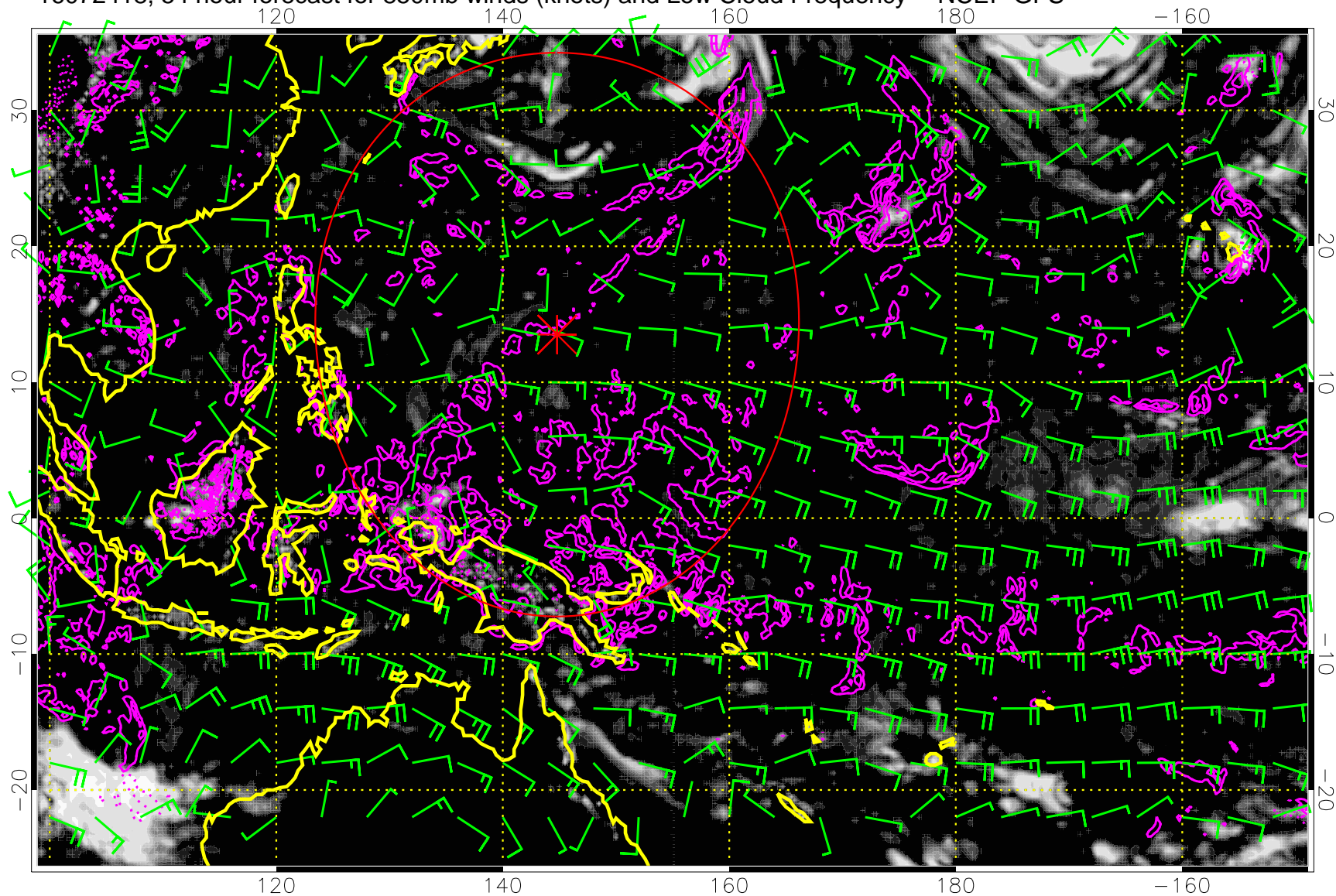
16072412, 48 hour forecast for 850mb winds (knots) and Low Cloud Frequency -- NCEP GFS



Precip (tot dot, conv sol) mm/day 40 mm/day contours, min 20

Range ring of 2304 km

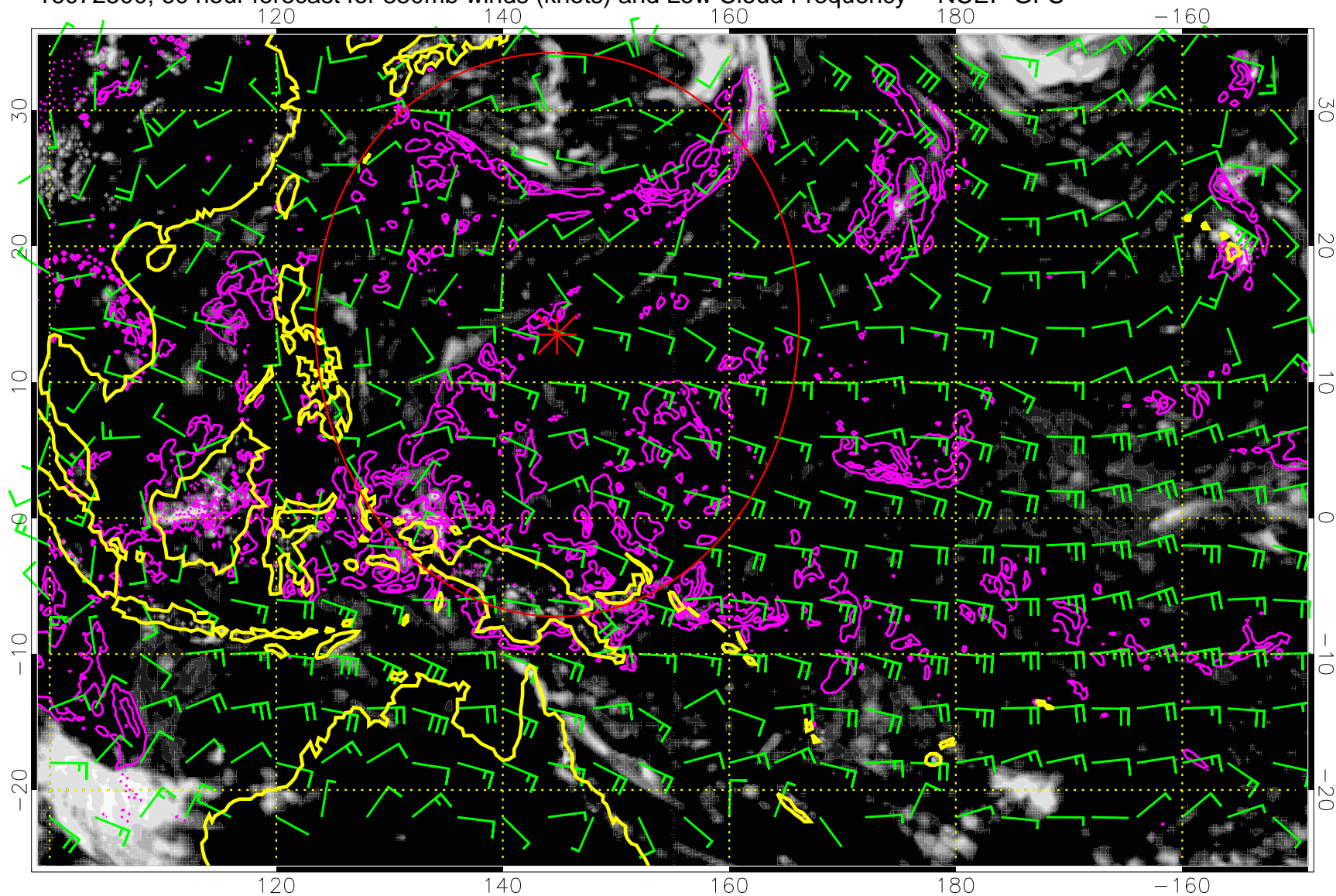
16072418, 54 hour forecast for 850mb winds (knots) and Low Cloud Frequency -- NCEP GFS



Precip (tot dot, conv sol) mm/day 40 mm/day contours, min 20

Range ring of 2304 km

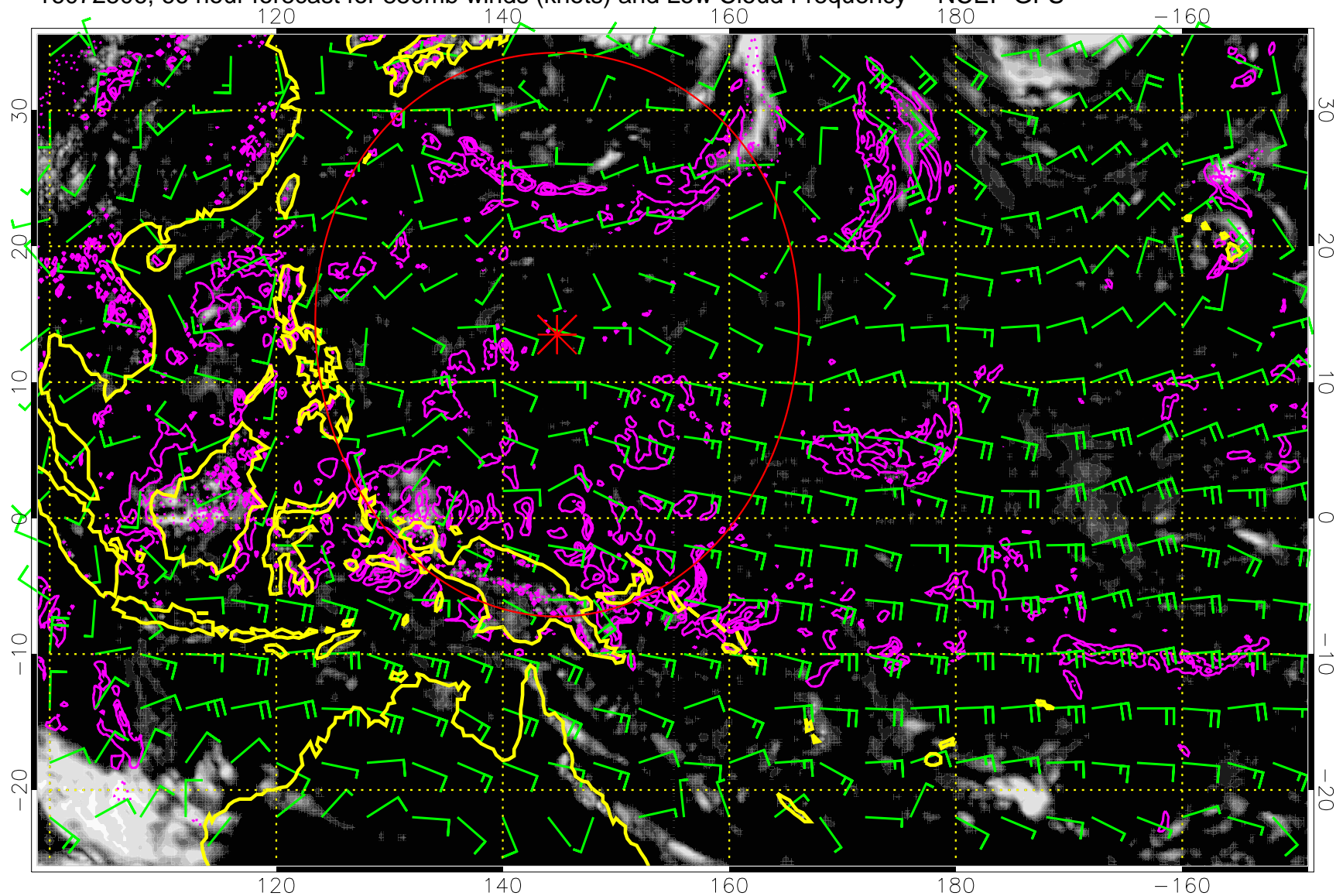
16072500, 60 hour forecast for 850mb winds (knots) and Low Cloud Frequency -- NCEP GFS



Precip (tot dot, conv sol) mm/day 40 mm/day contours, min 20

Range ring of 2304 km

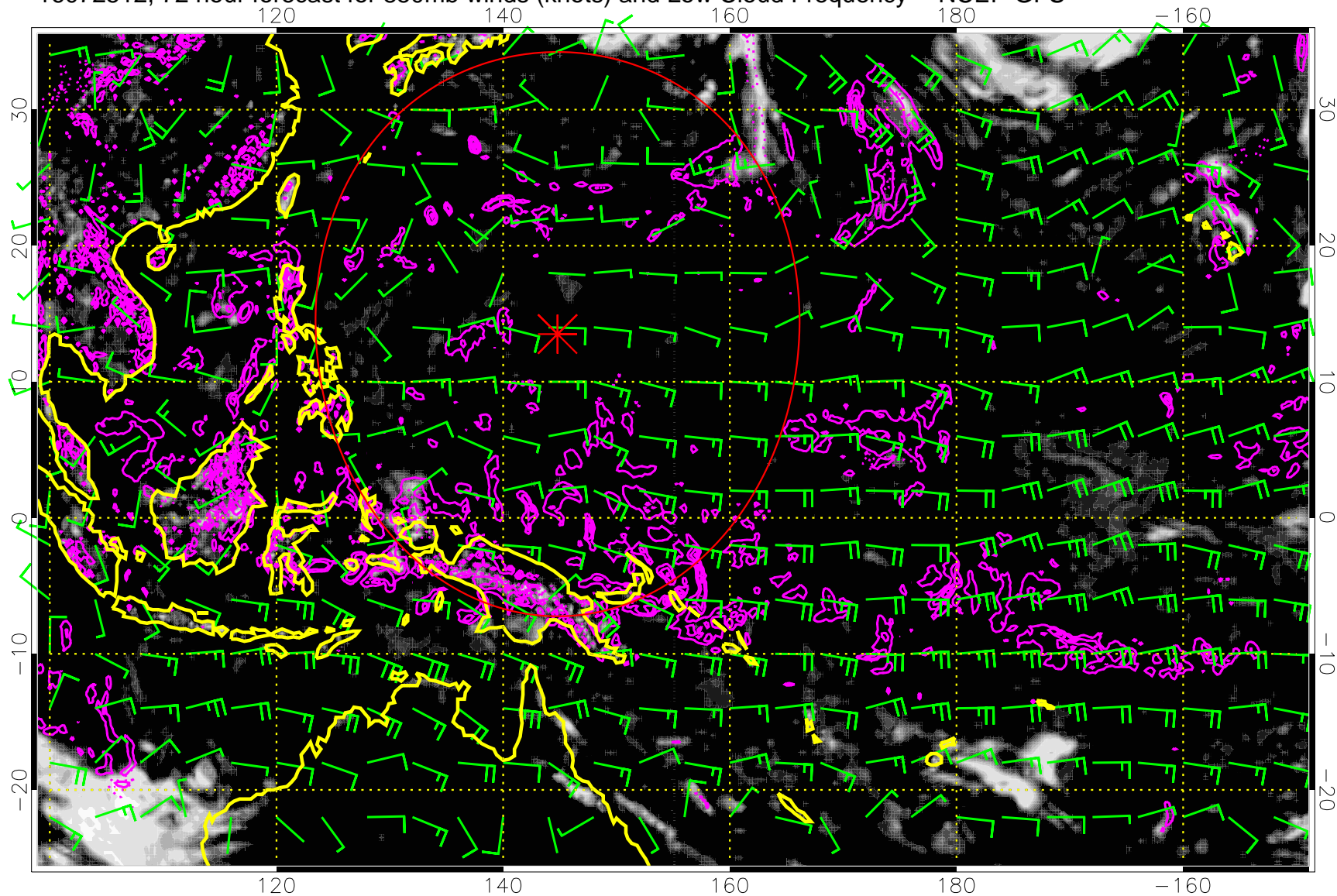
16072506, 66 hour forecast for 850mb winds (knots) and Low Cloud Frequency -- NCEP GFS



Precip (tot dot, conv sol) mm/day 40 mm/day contours, min 20

Range ring of 2304 km

16072512, 72 hour forecast for 850mb winds (knots) and Low Cloud Frequency -- NCEP GFS

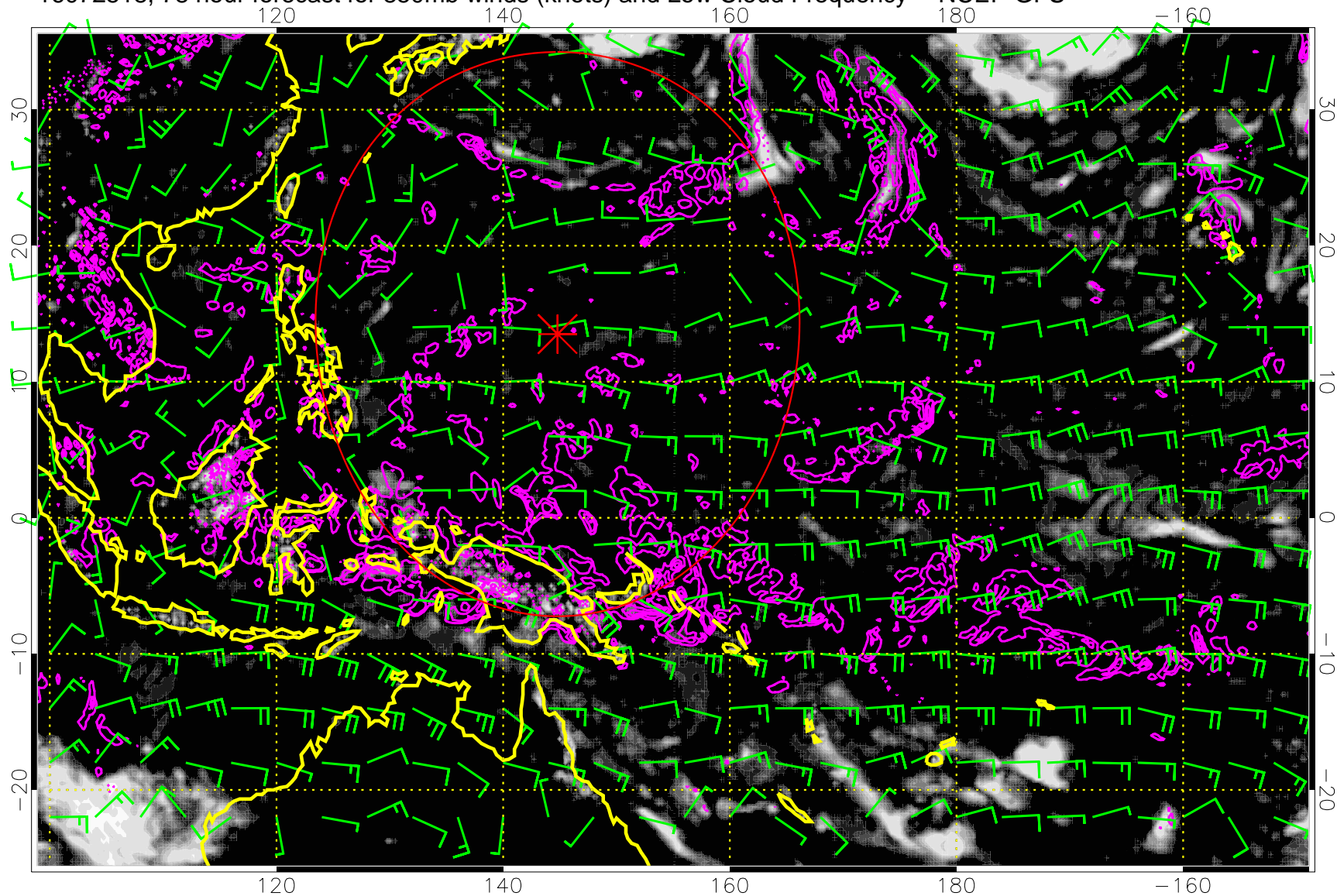


0.0 0.2 0.4 0.6 0.8 1.0
Low Cloud Frequency

Precip (tot dot, conv sol) mm/day 40 mm/day contours, min 20

Range ring of 2304 km

16072518, 78 hour forecast for 850mb winds (knots) and Low Cloud Frequency -- NCEP GFS

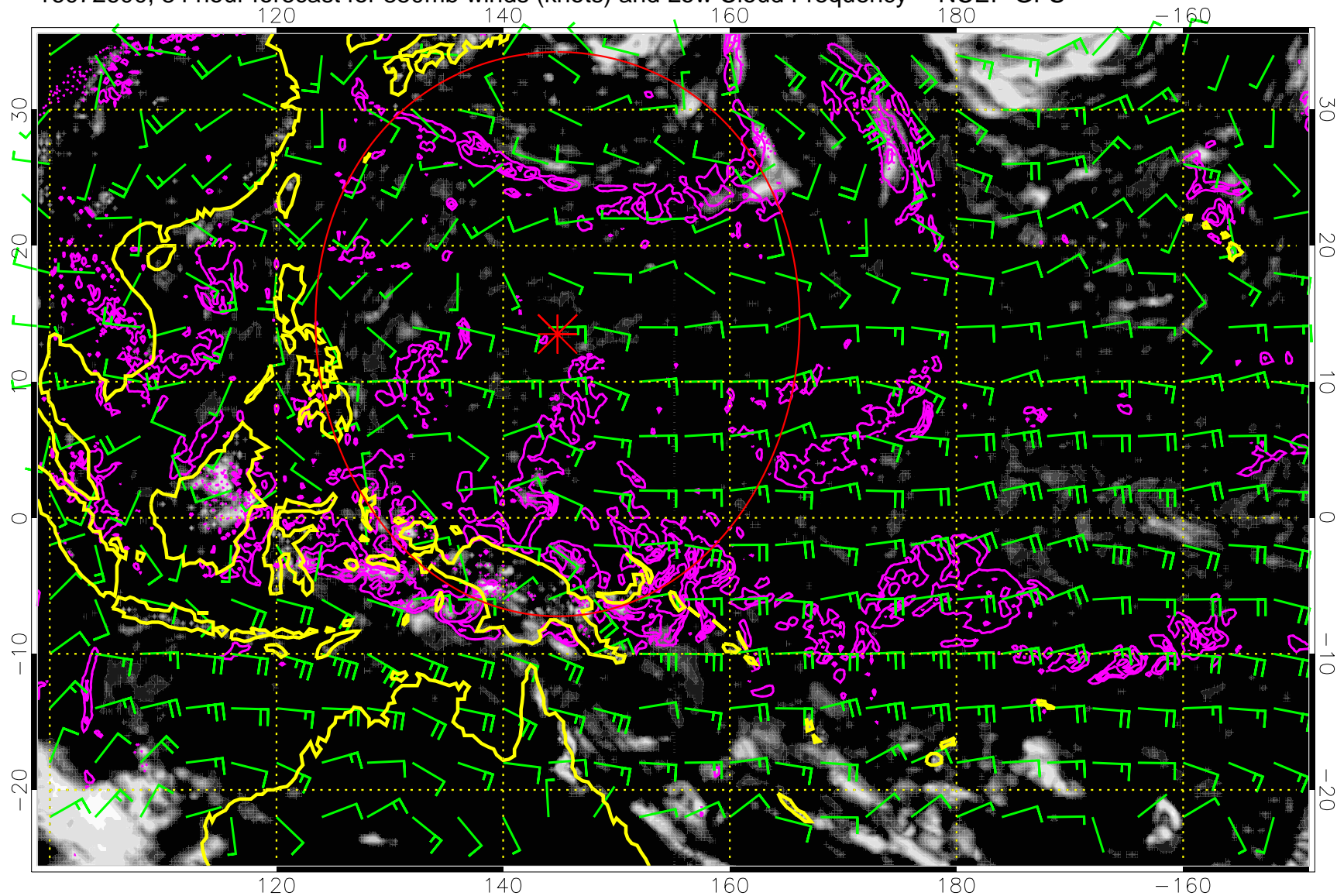


0.0 0.2 0.4 0.6 0.8 1.0
Low Cloud Frequency

Precip (tot dot, conv sol) mm/day 40 mm/day contours, min 20

Range ring of 2304 km

16072600, 84 hour forecast for 850mb winds (knots) and Low Cloud Frequency -- NCEP GFS

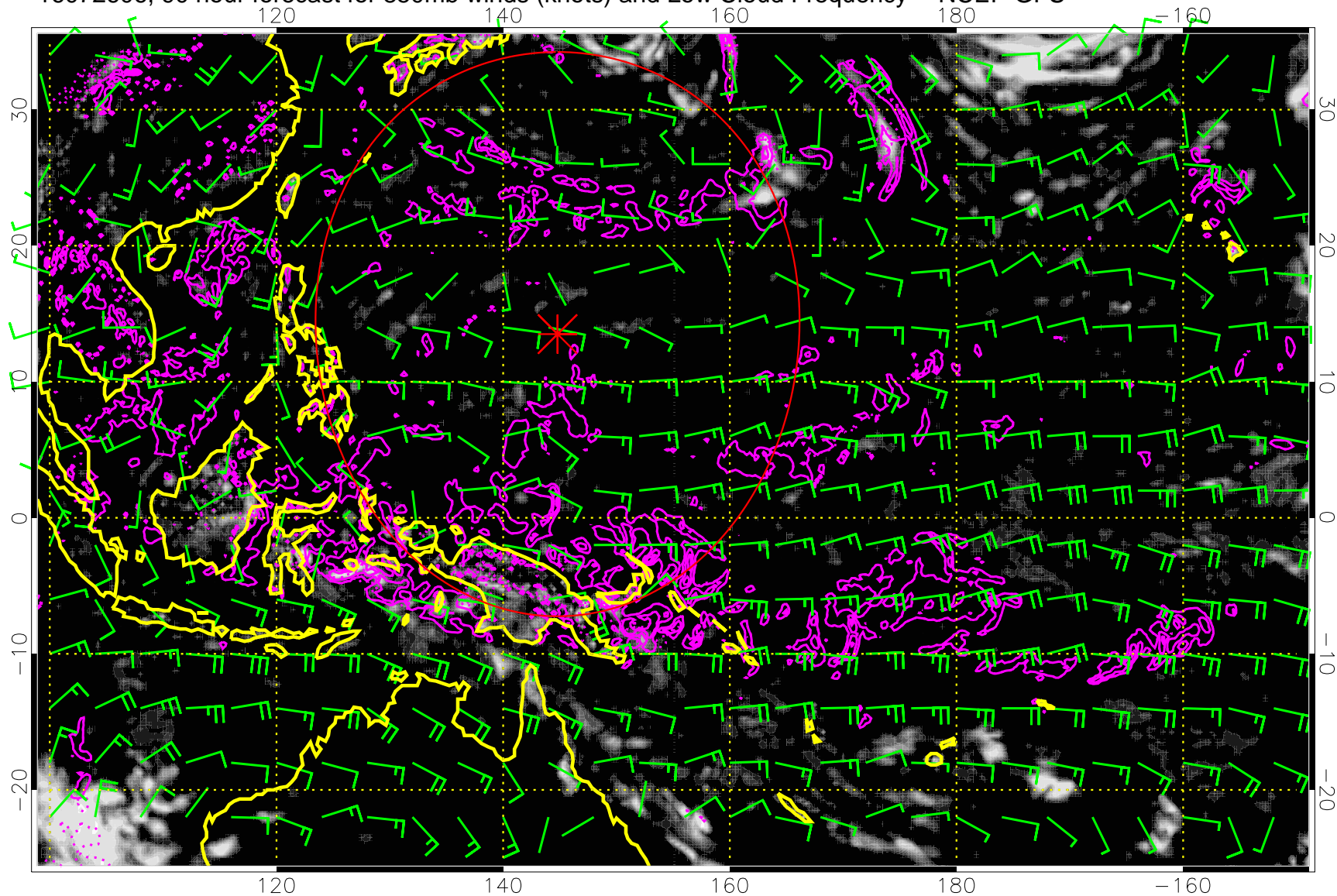


Low Cloud Frequency

Precip (tot dot, conv sol) mm/day 40 mm/day contours, min 20

Range ring of 2304 km

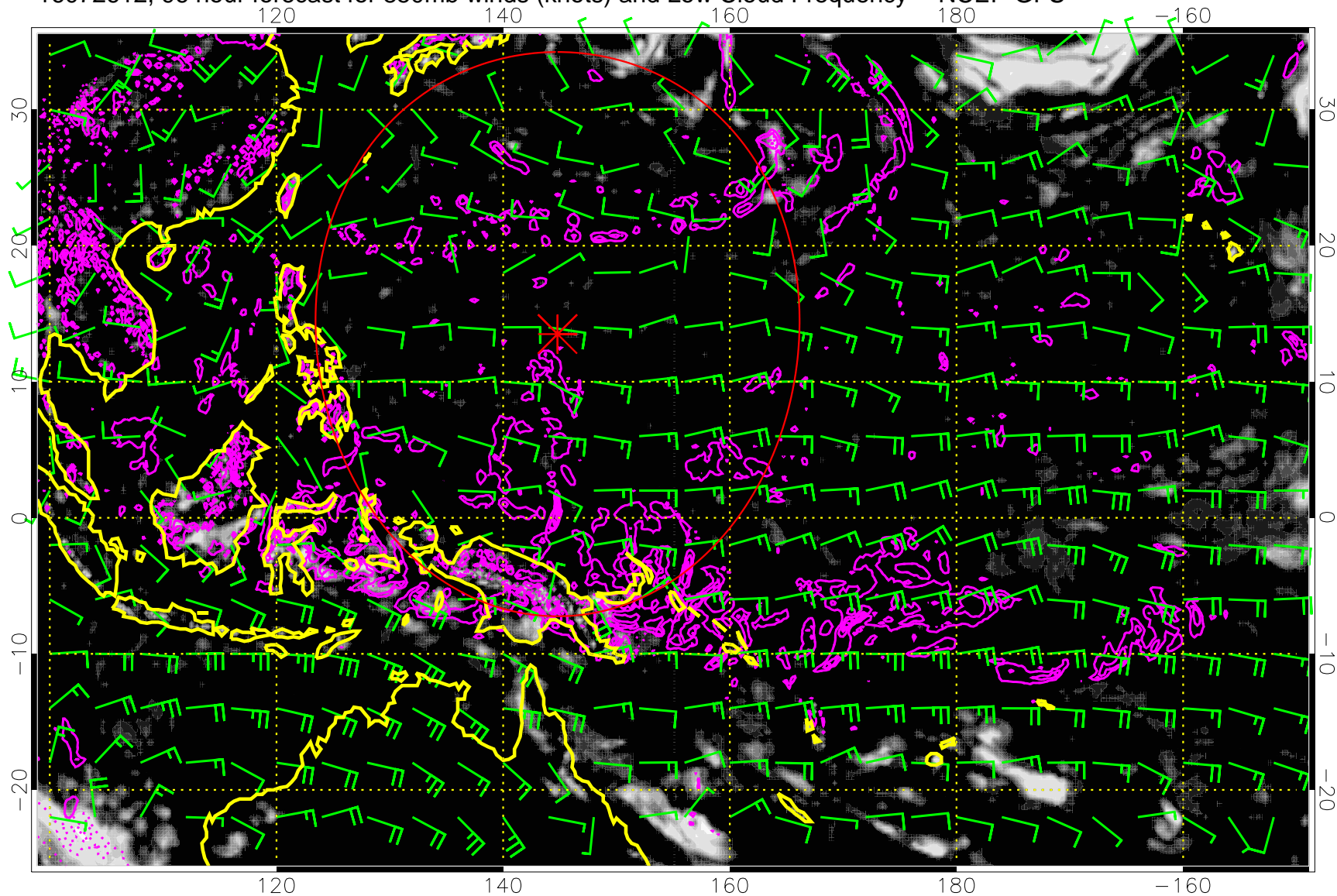
16072606, 90 hour forecast for 850mb winds (knots) and Low Cloud Frequency -- NCEP GFS



Precip (tot dot, conv sol) mm/day 40 mm/day contours, min 20

Range ring of 2304 km

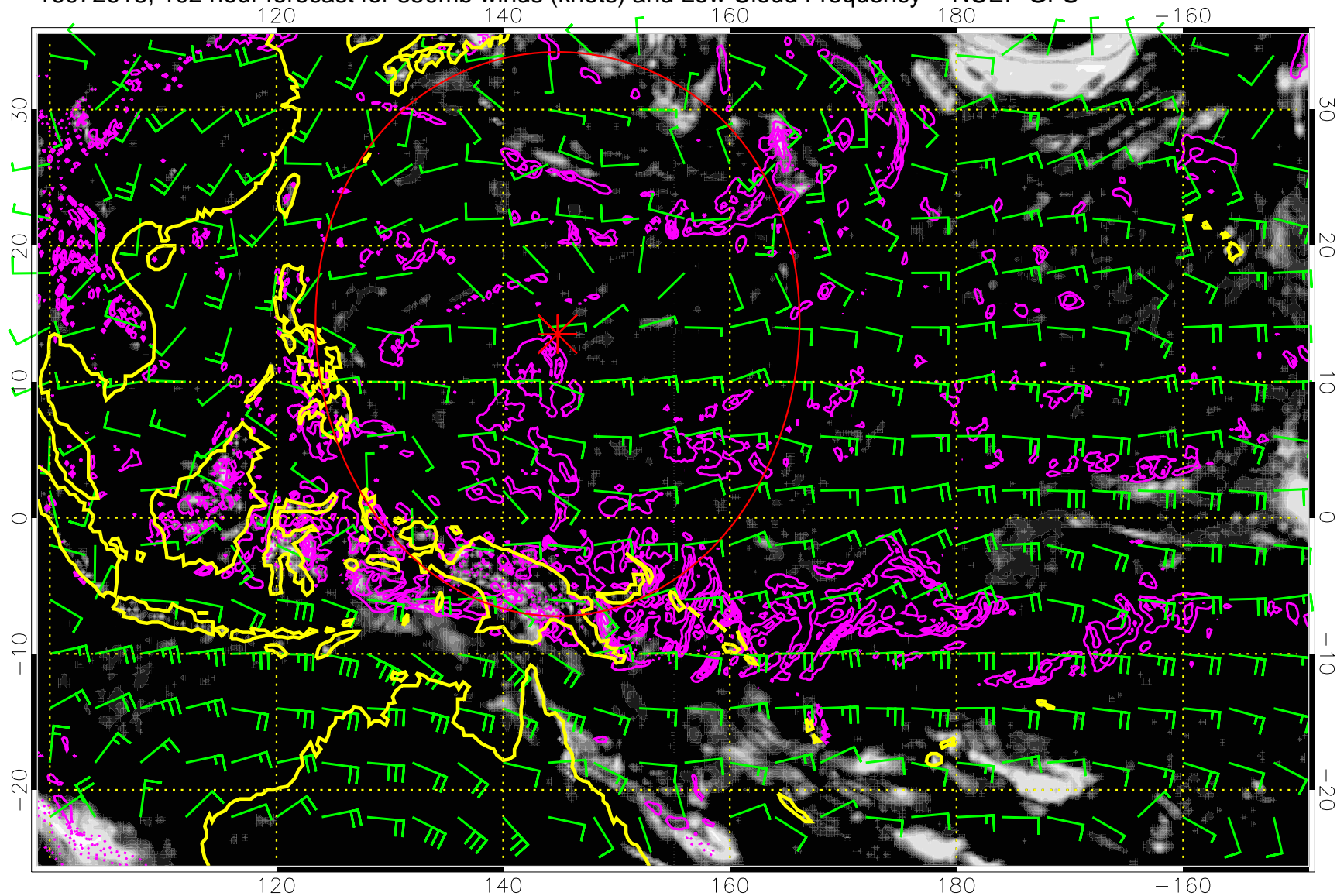
16072612, 96 hour forecast for 850mb winds (knots) and Low Cloud Frequency -- NCEP GFS



Precip (tot dot, conv sol) mm/day 40 mm/day contours, min 20

Range ring of 2304 km

16072618, 102 hour forecast for 850mb winds (knots) and Low Cloud Frequency -- NCEP GFS

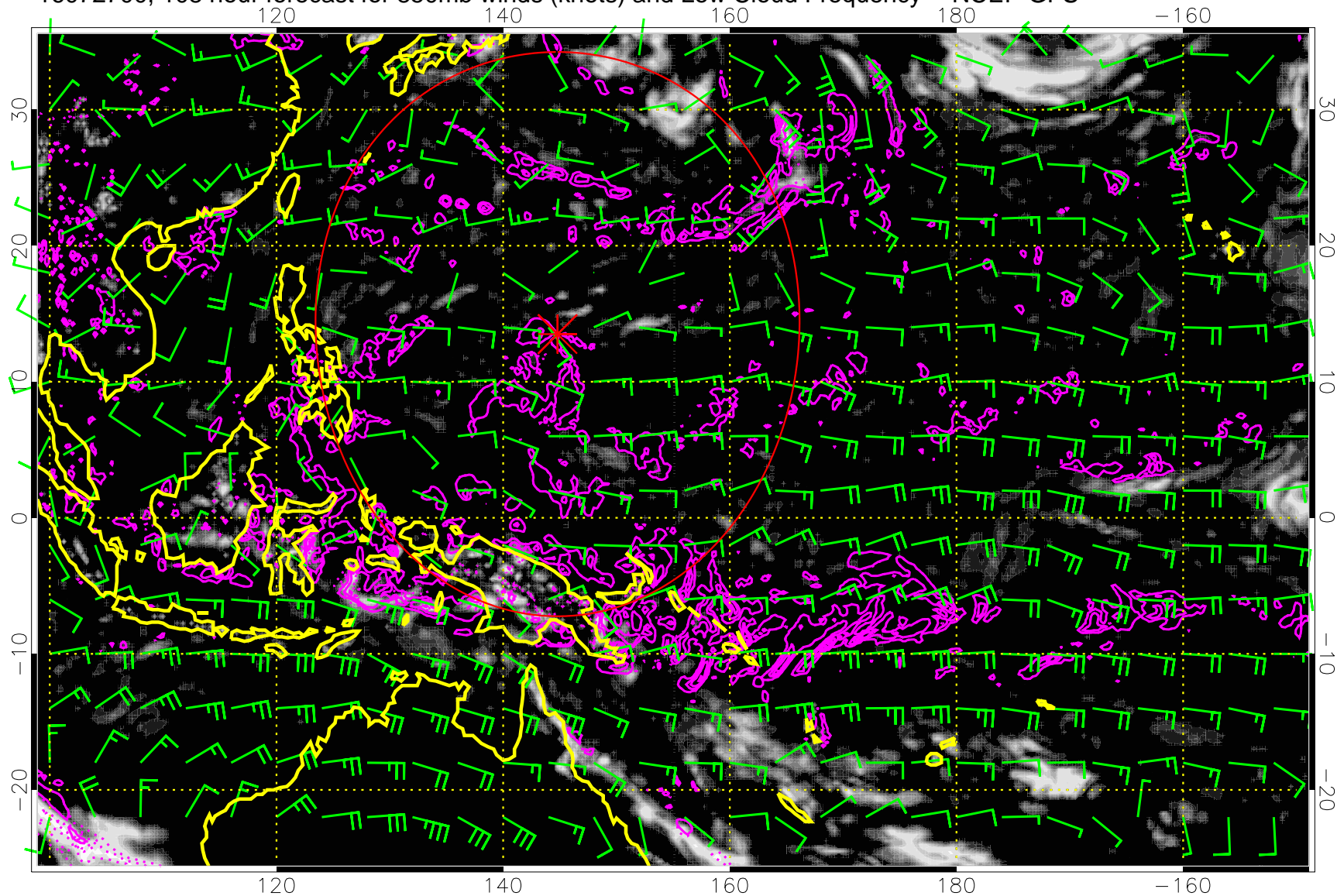


0.0 0.2 0.4 0.6 0.8 1.0
Low Cloud Frequency

Precip (tot dot, conv sol) mm/day 40 mm/day contours, min 20

Range ring of 2304 km

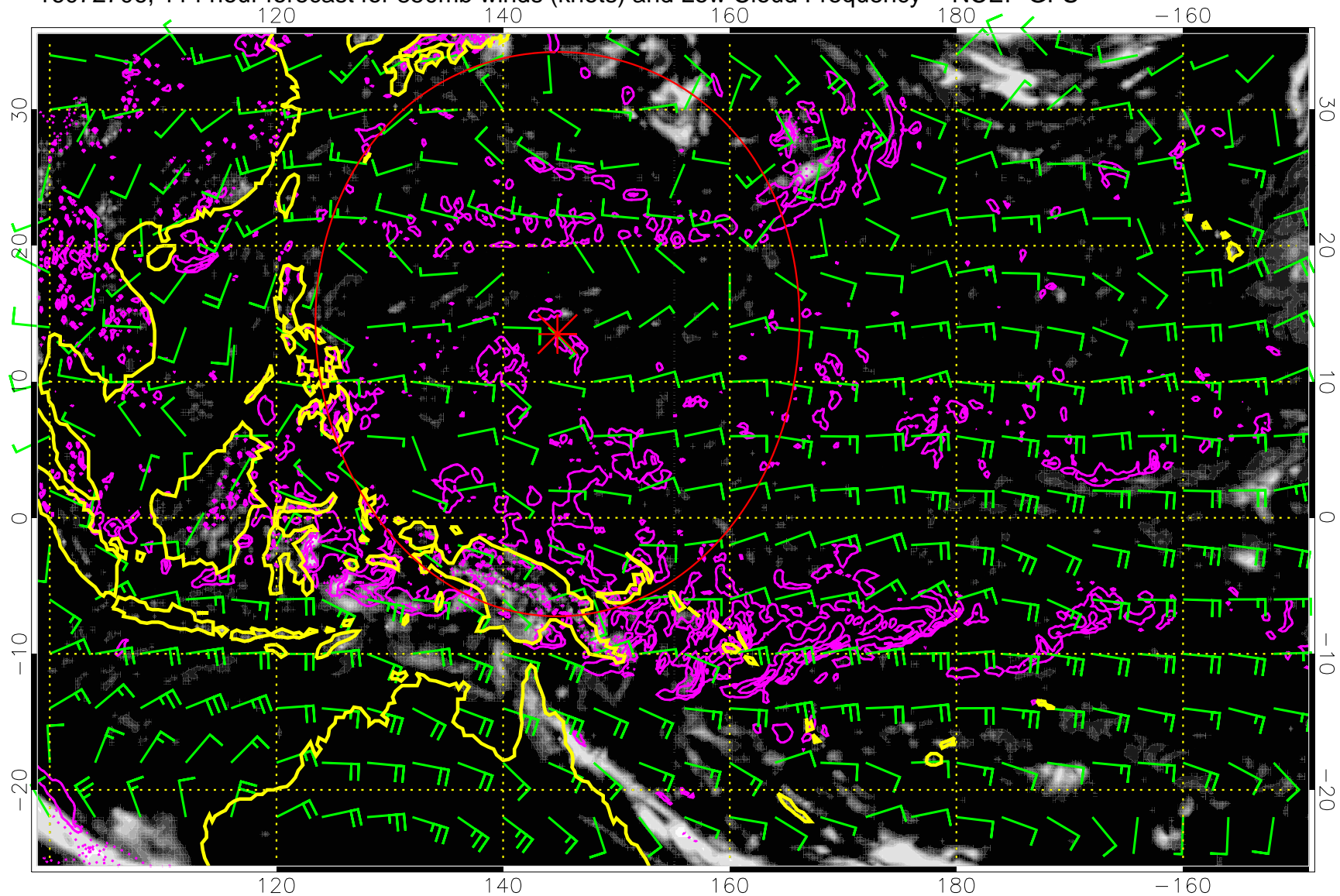
16072700, 108 hour forecast for 850mb winds (knots) and Low Cloud Frequency -- NCEP GFS



Precip (tot dot, conv sol) mm/day 40 mm/day contours, min 20

Range ring of 2304 km

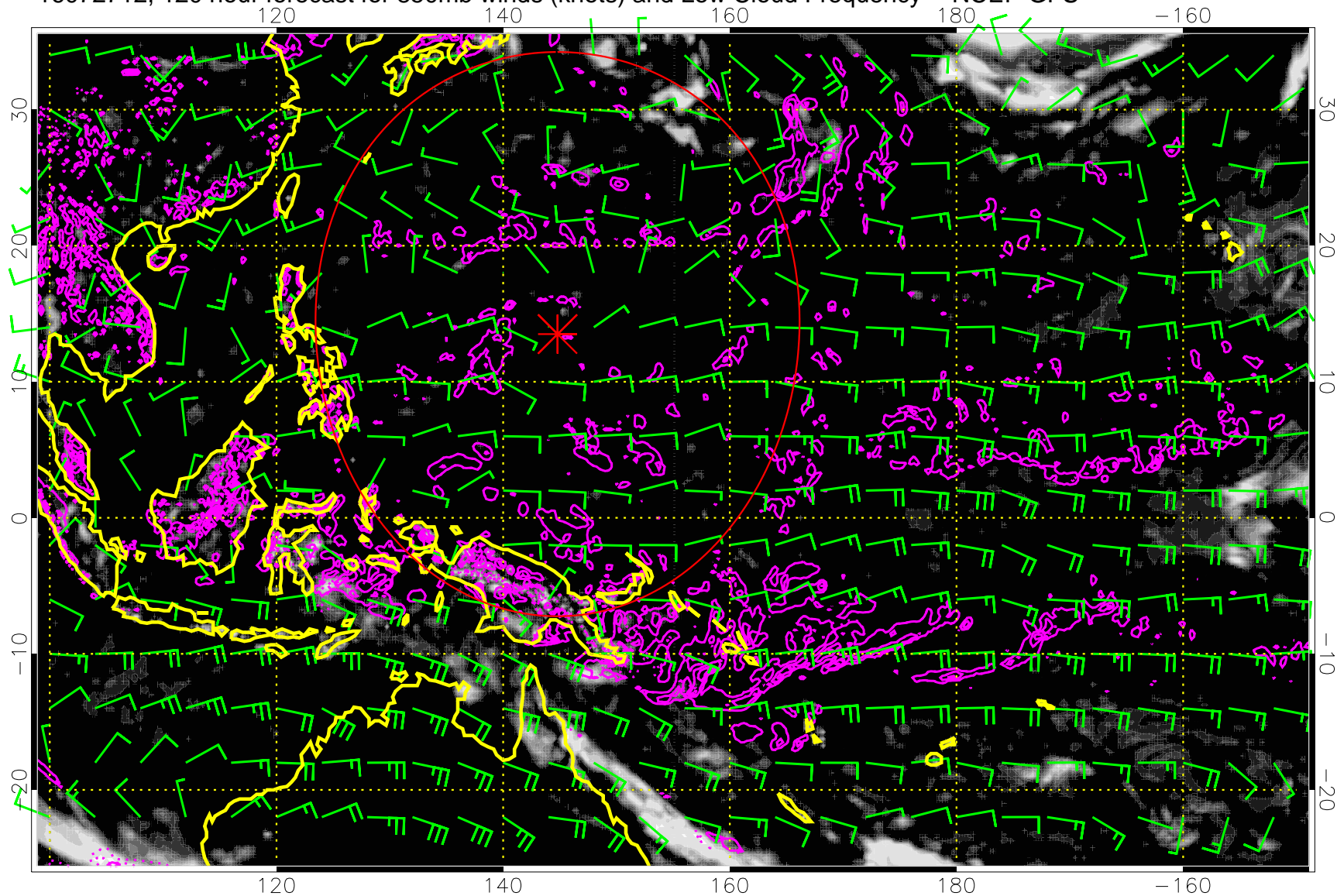
16072706, 114 hour forecast for 850mb winds (knots) and Low Cloud Frequency -- NCEP GFS



Precip (tot dot, conv sol) mm/day 40 mm/day contours, min 20

Range ring of 2304 km

16072712, 120 hour forecast for 850mb winds (knots) and Low Cloud Frequency -- NCEP GFS



Precip (tot dot, conv sol) mm/day 40 mm/day contours, min 20

Range ring of 2304 km