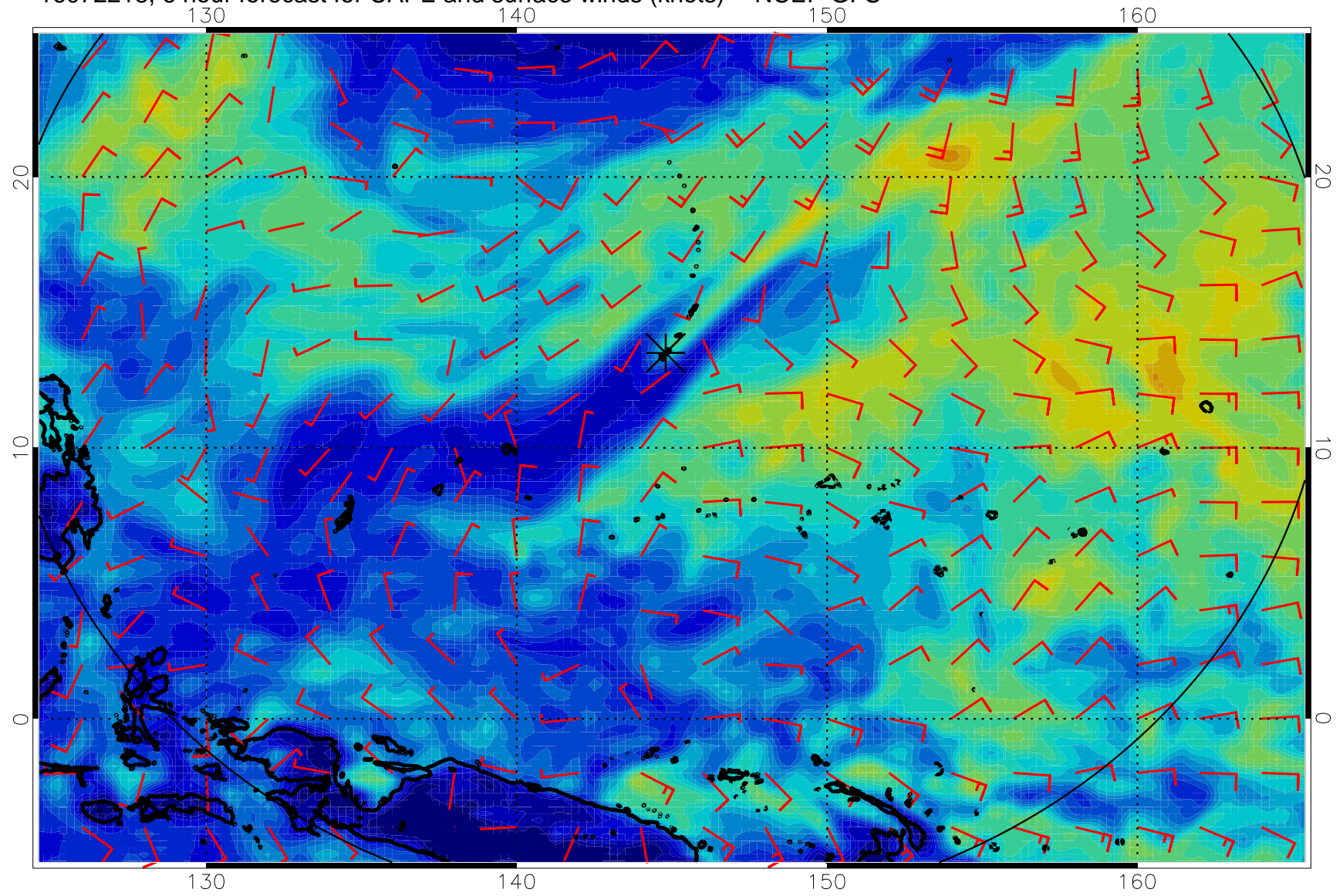
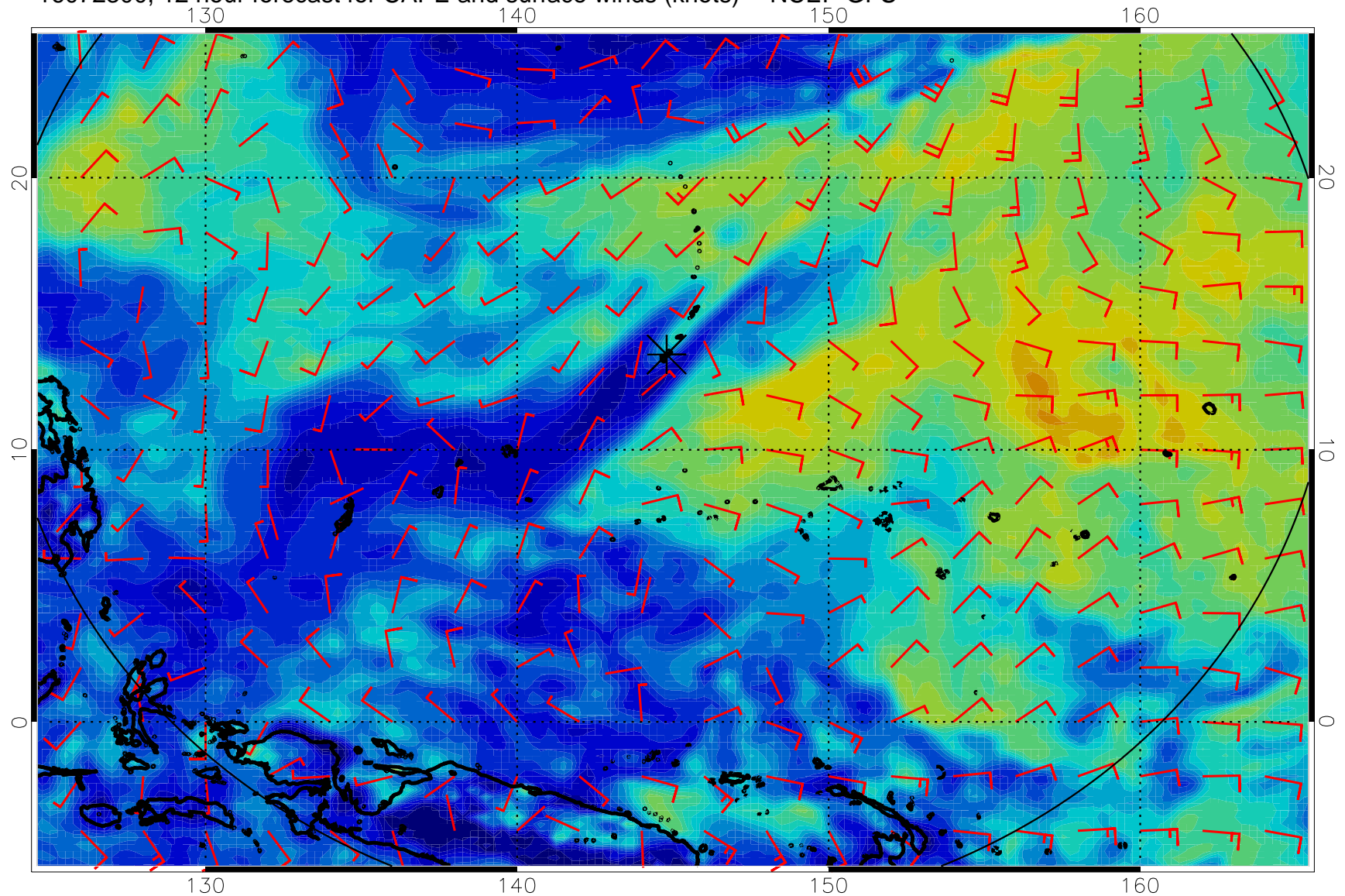


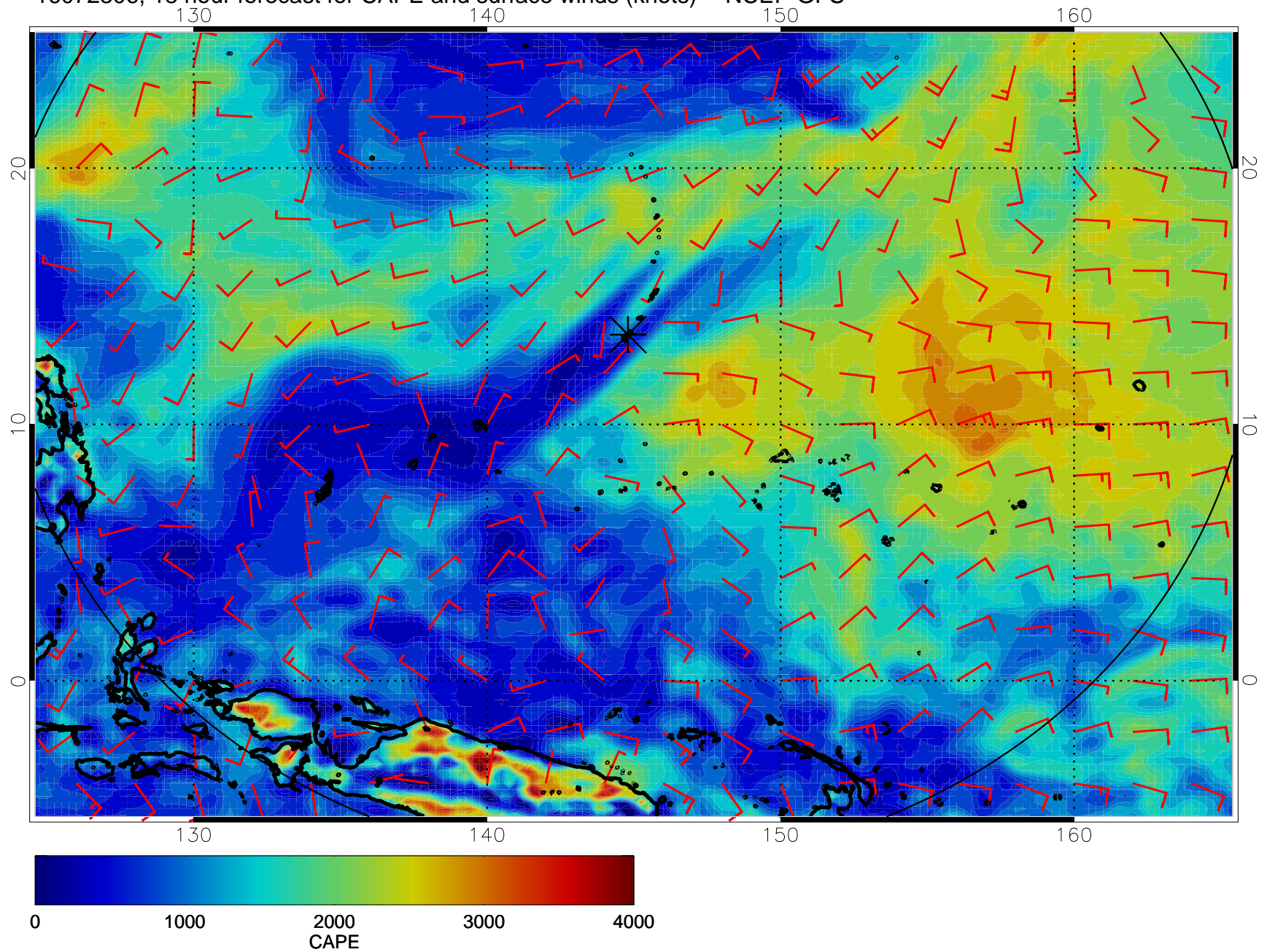
16072218, 6 hour forecast for CAPE and surface winds (knots) -- NCEP GFS



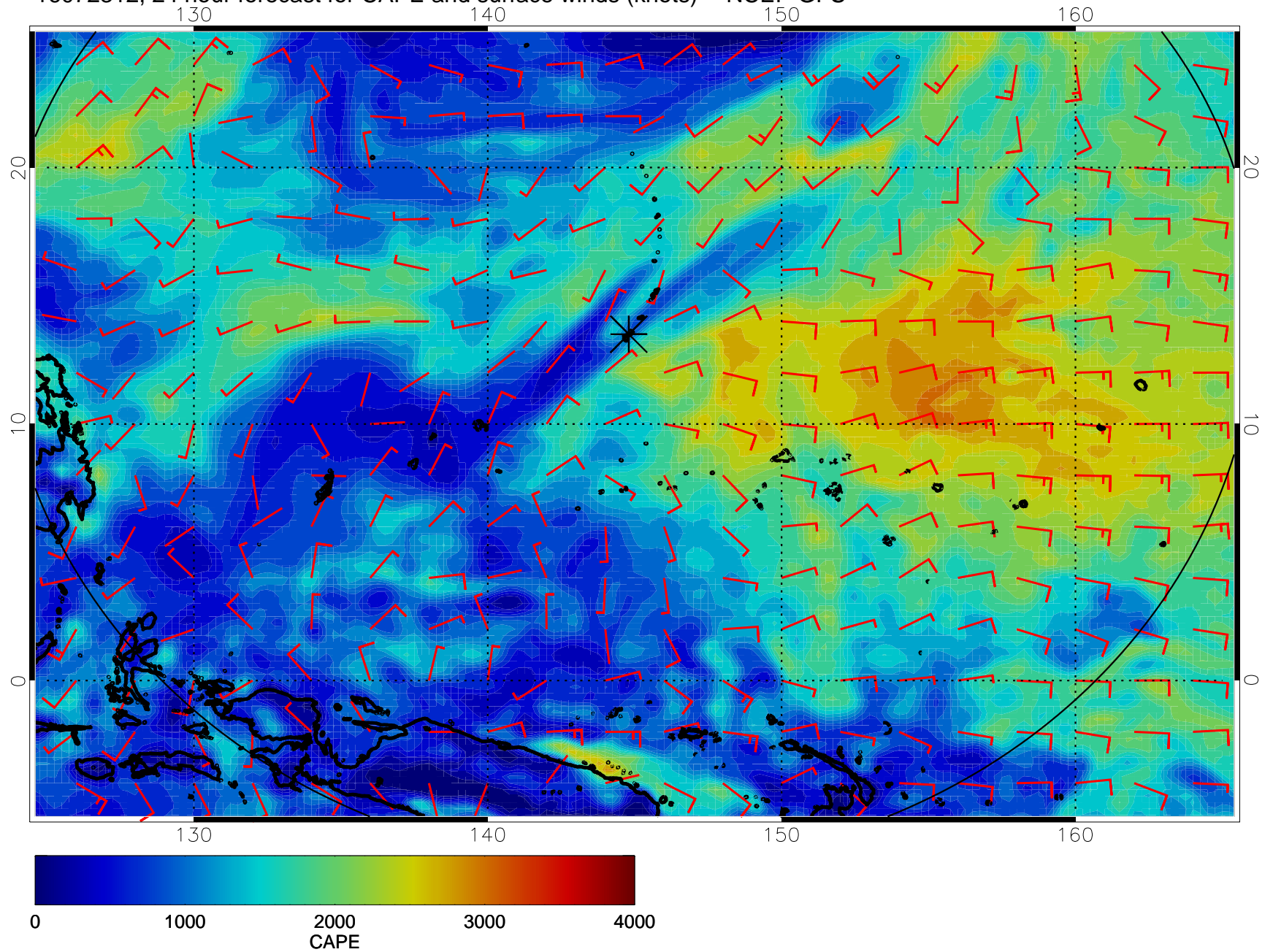
16072300, 12 hour forecast for CAPE and surface winds (knots) -- NCEP GFS



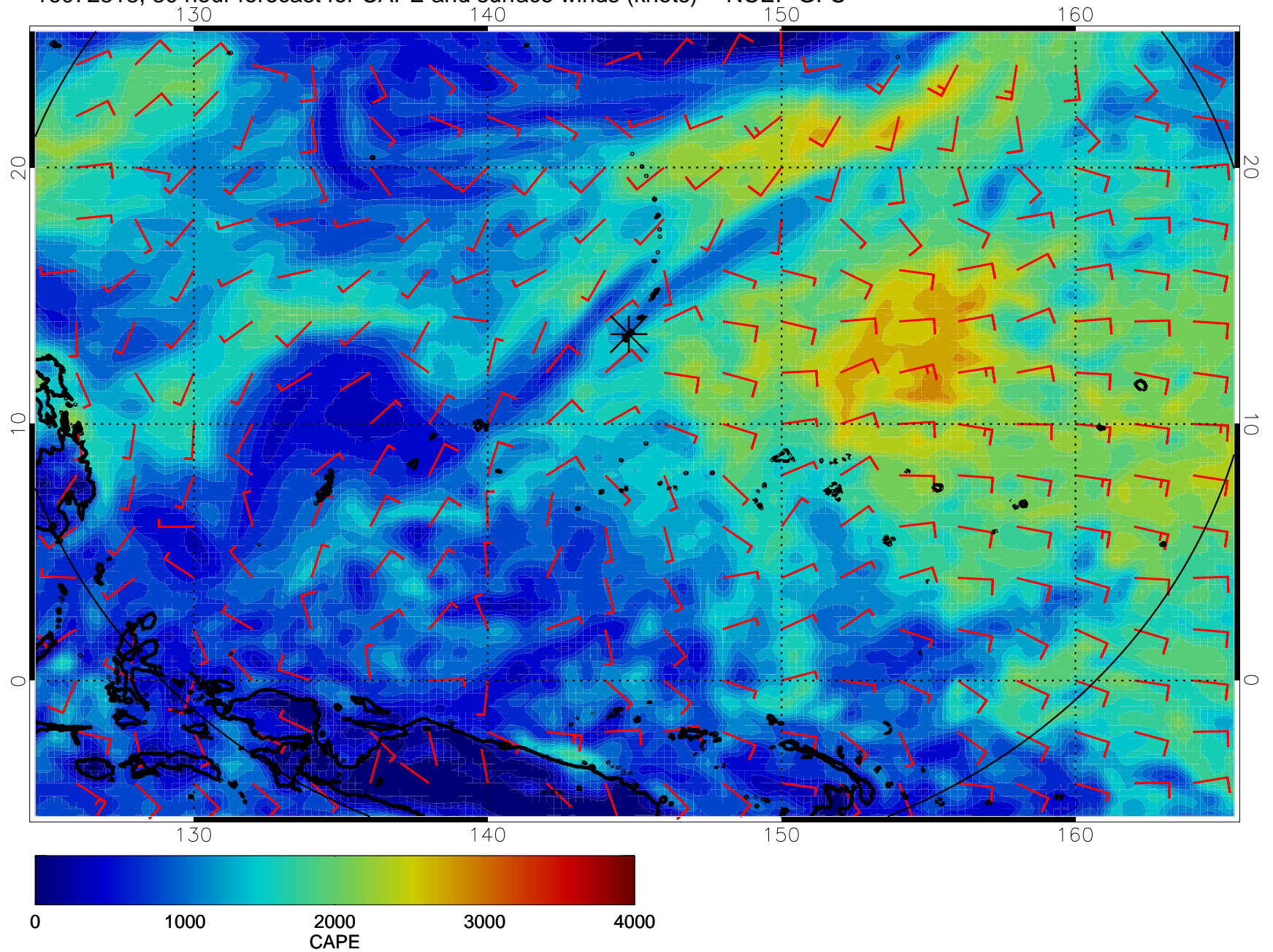
16072306, 18 hour forecast for CAPE and surface winds (knots) -- NCEP GFS



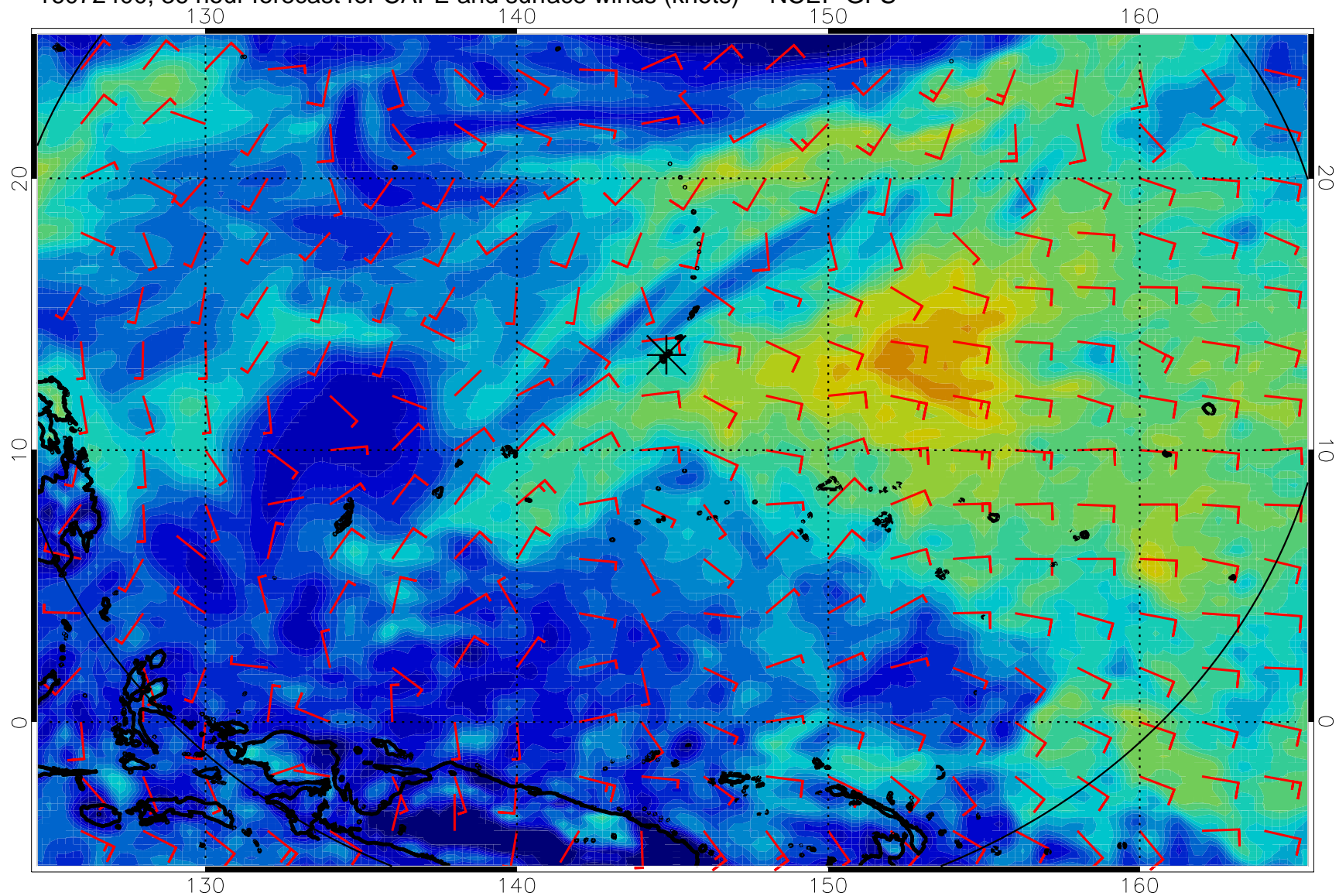
16072312, 24 hour forecast for CAPE and surface winds (knots) -- NCEP GFS



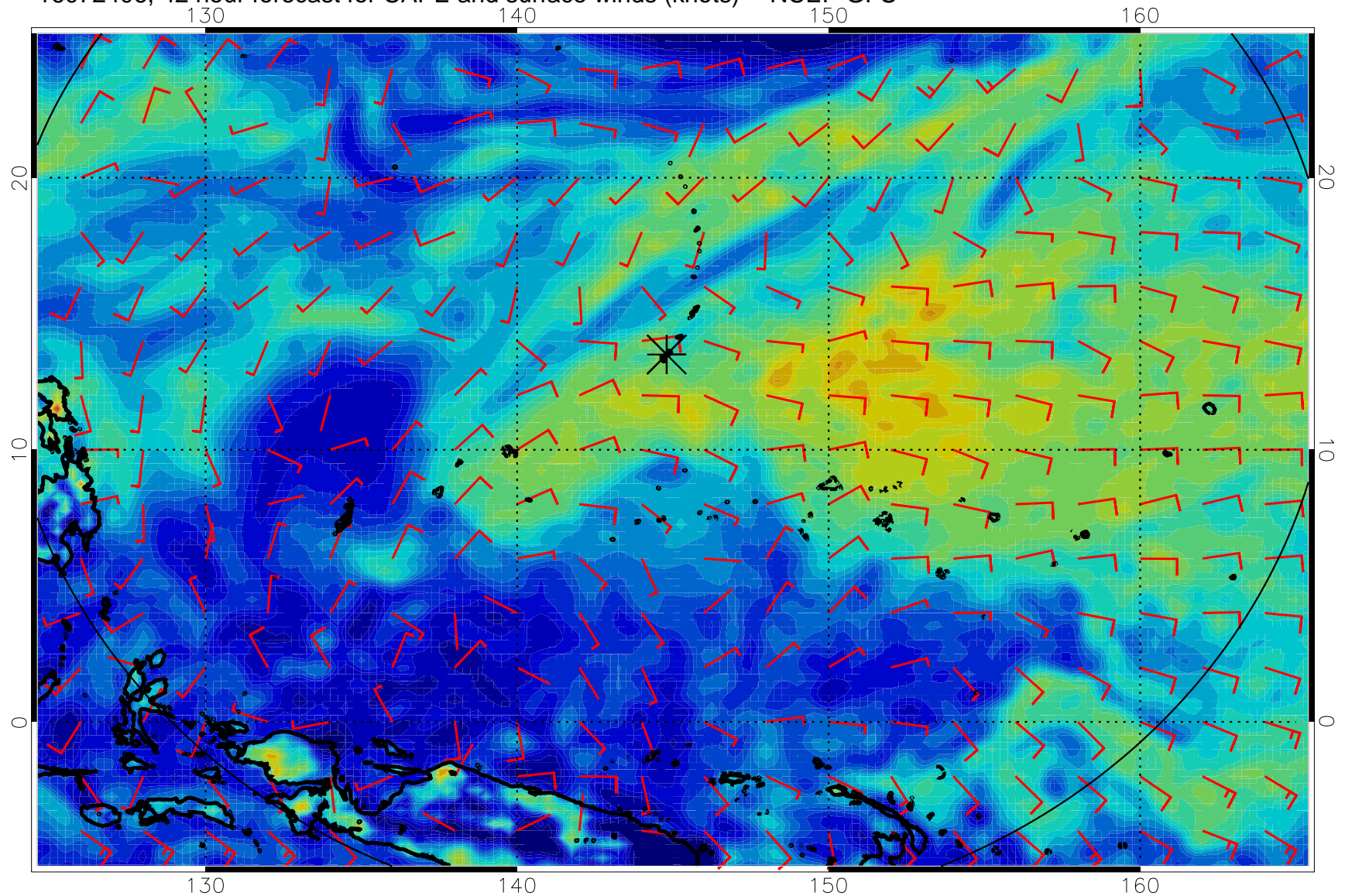
16072318, 30 hour forecast for CAPE and surface winds (knots) -- NCEP GFS



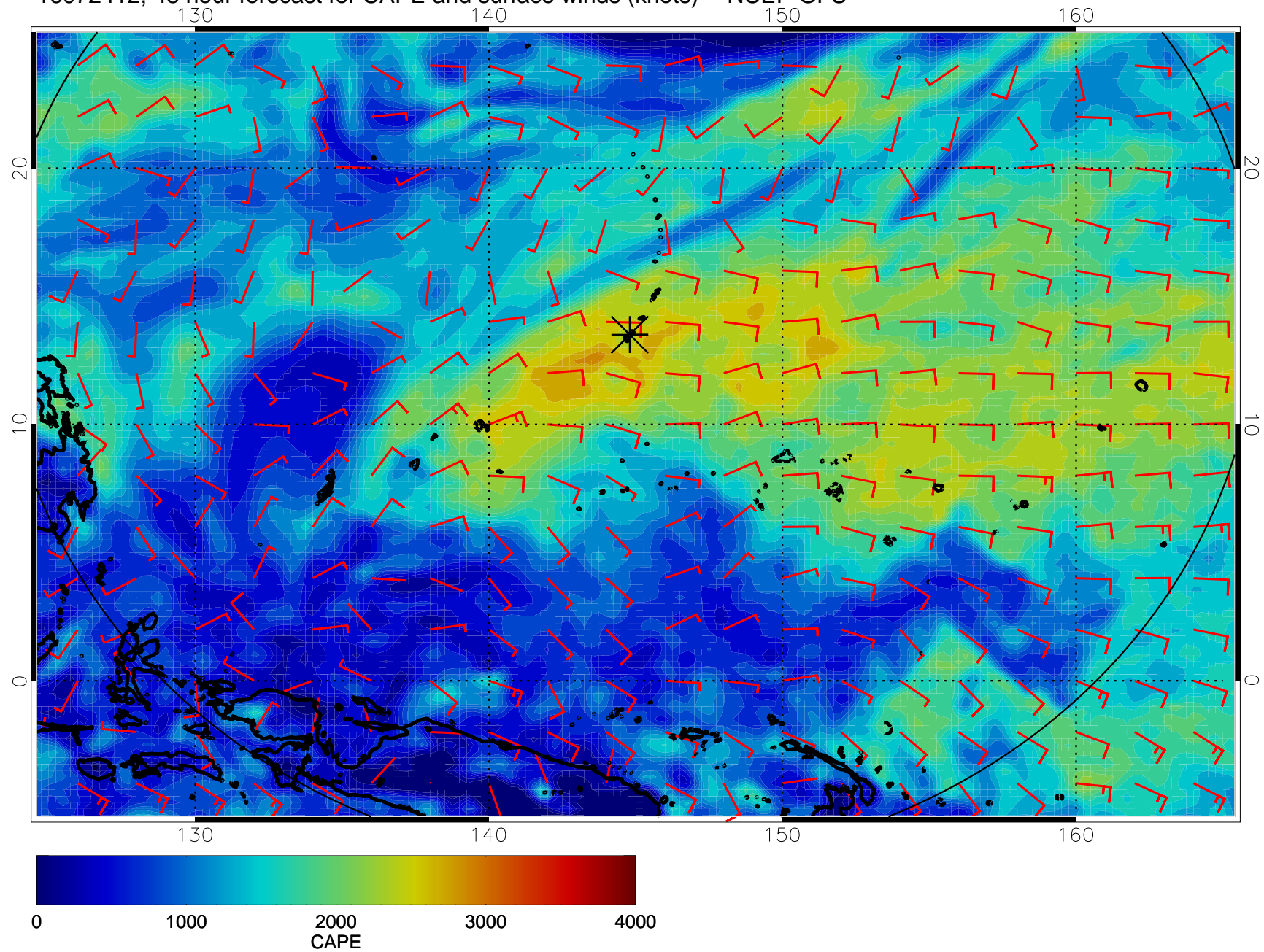
16072400, 36 hour forecast for CAPE and surface winds (knots) -- NCEP GFS



16072406, 42 hour forecast for CAPE and surface winds (knots) -- NCEP GFS

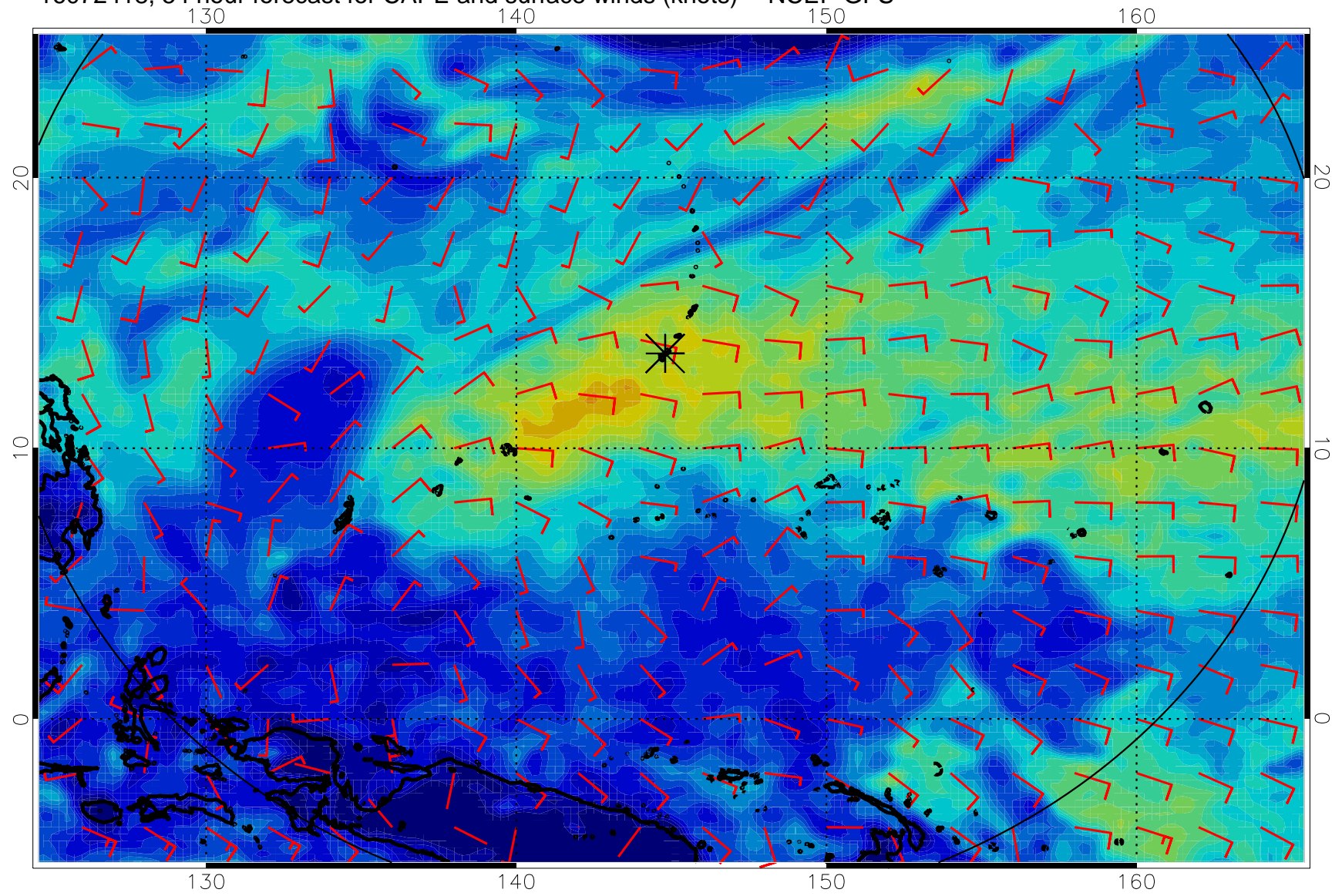


16072412, 48 hour forecast for CAPE and surface winds (knots) -- NCEP GFS

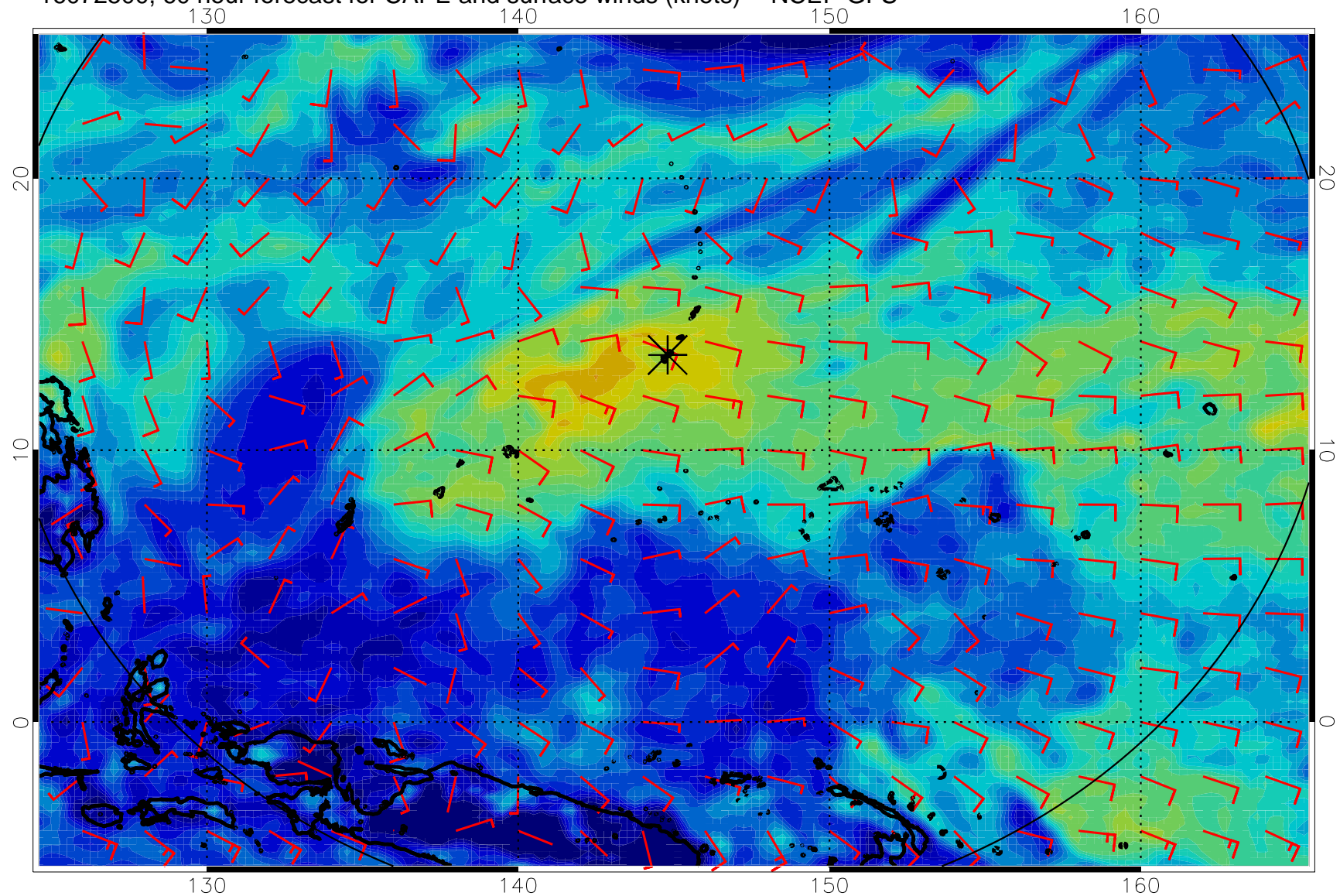




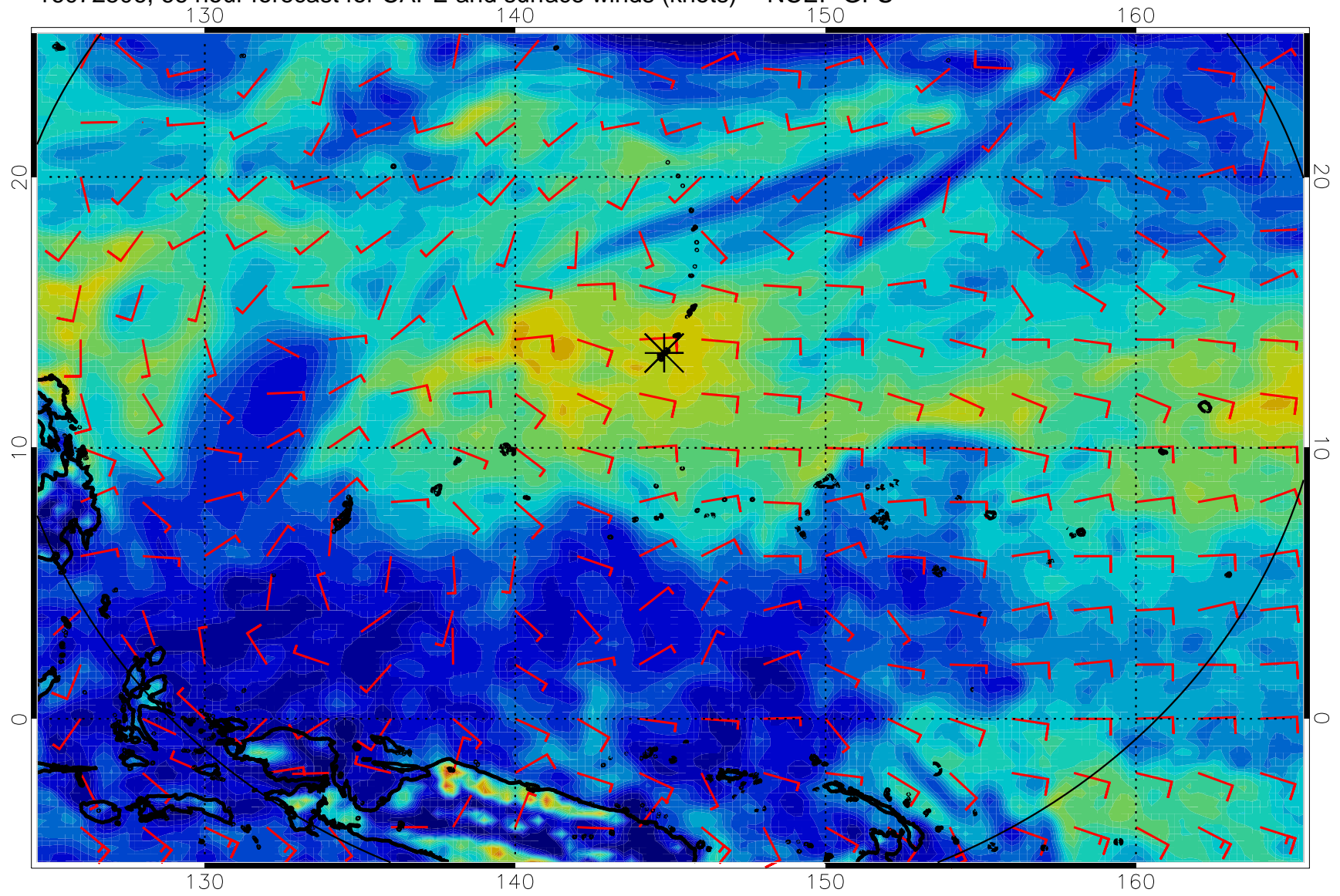
16072418, 54 hour forecast for CAPE and surface winds (knots) -- NCEP GFS



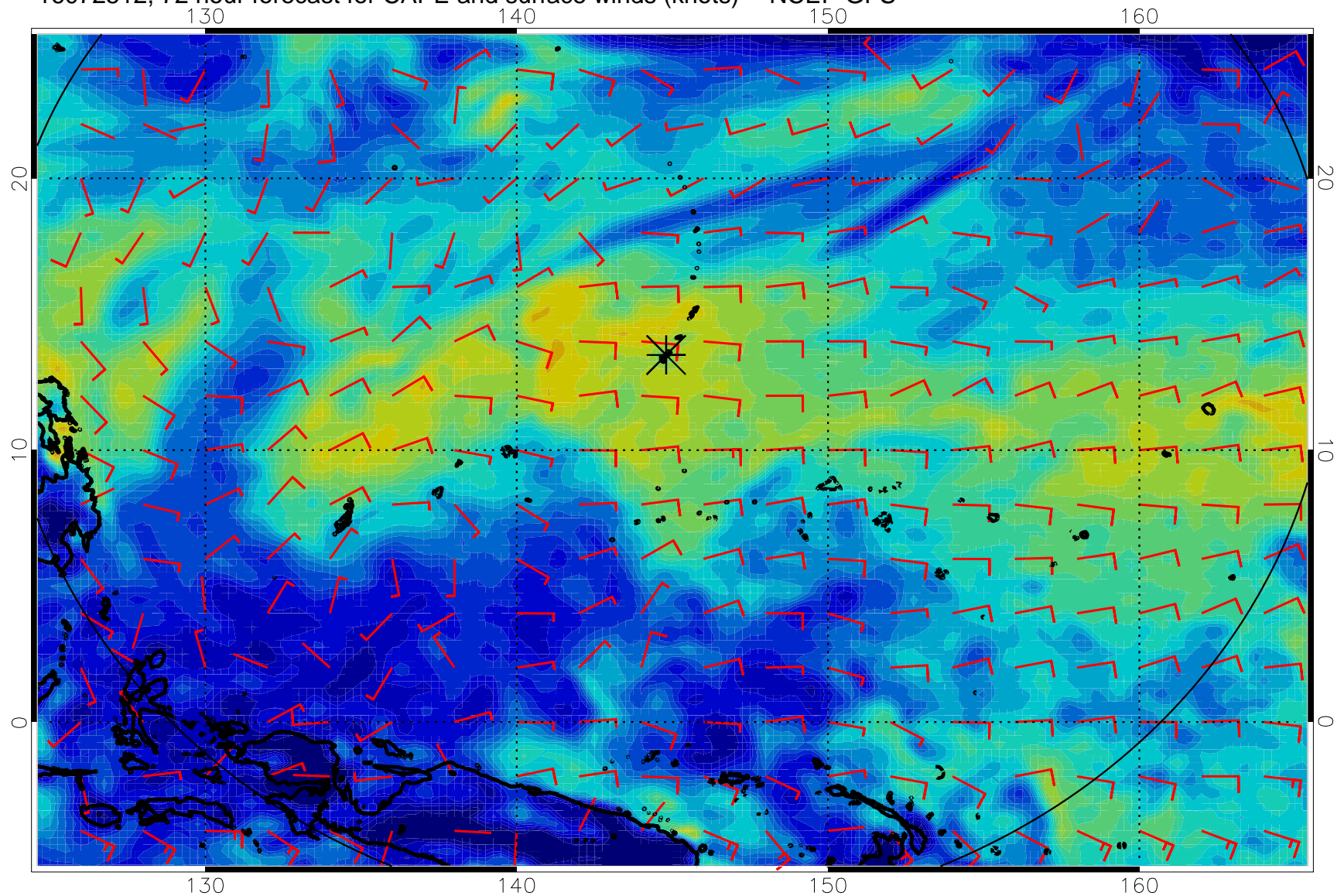
16072500, 60 hour forecast for CAPE and surface winds (knots) -- NCEP GFS



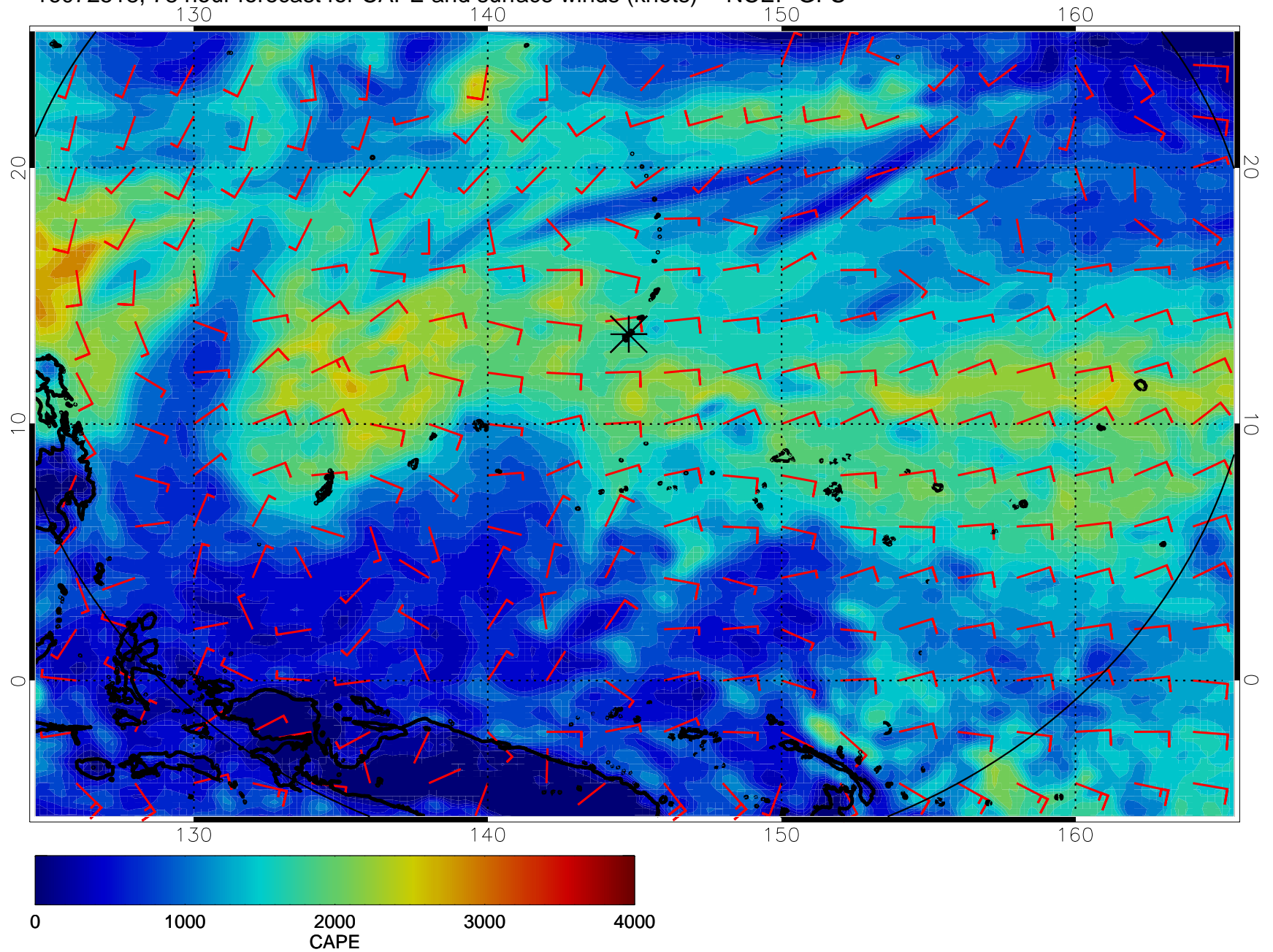
16072506, 66 hour forecast for CAPE and surface winds (knots) -- NCEP GFS



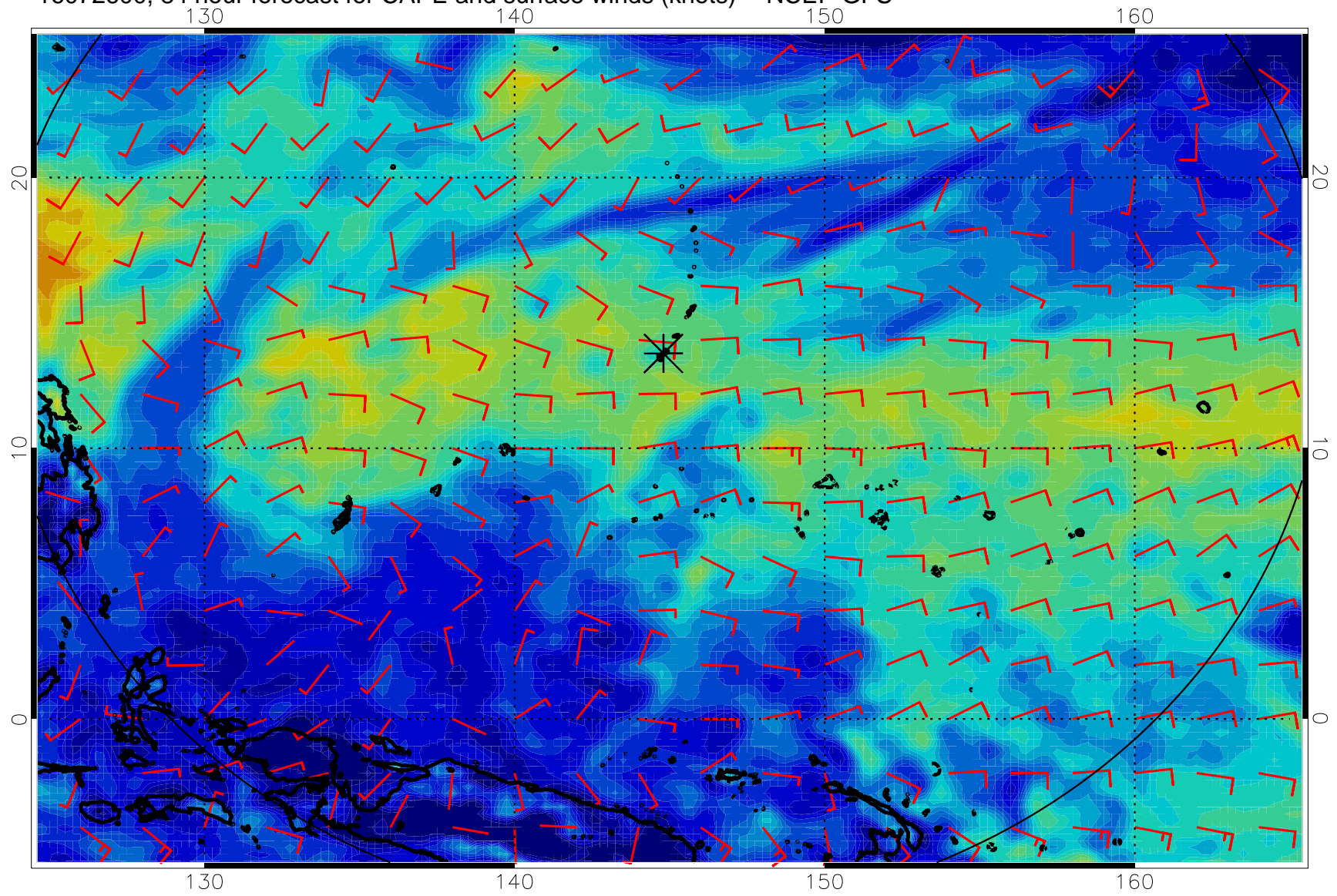
16072512, 72 hour forecast for CAPE and surface winds (knots) -- NCEP GFS



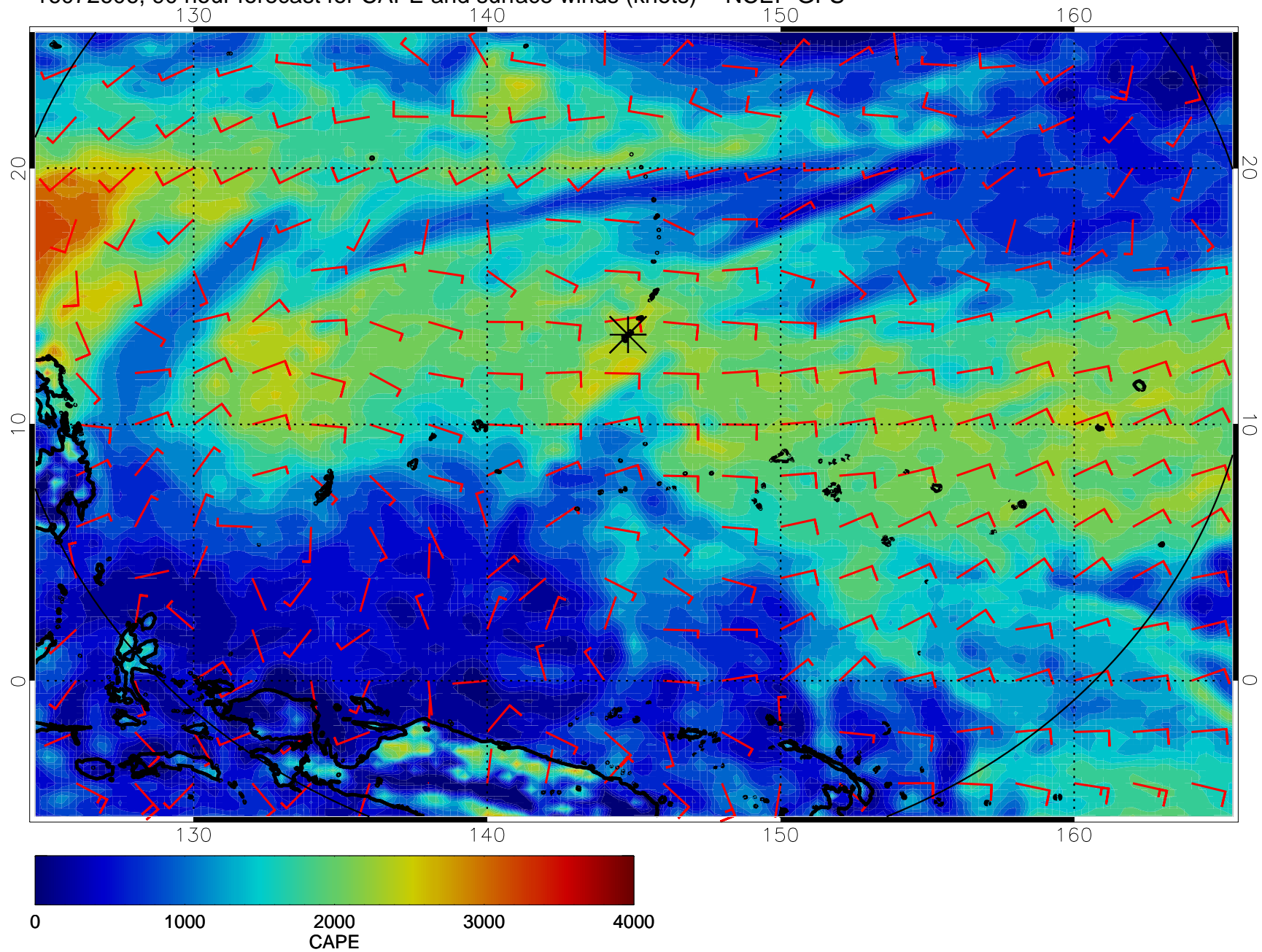
16072518, 78 hour forecast for CAPE and surface winds (knots) -- NCEP GFS



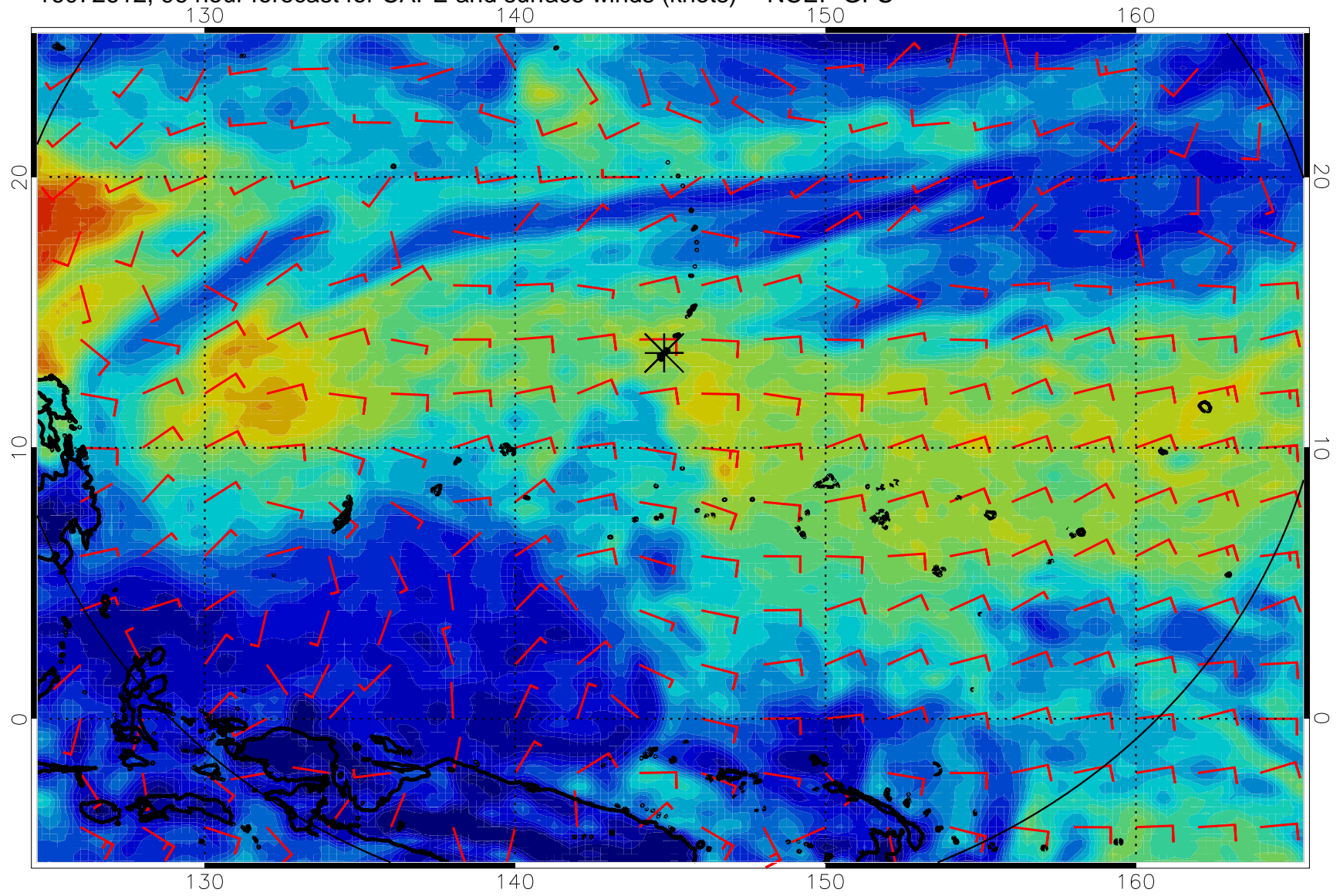
16072600, 84 hour forecast for CAPE and surface winds (knots) -- NCEP GFS



16072606, 90 hour forecast for CAPE and surface winds (knots) -- NCEP GFS

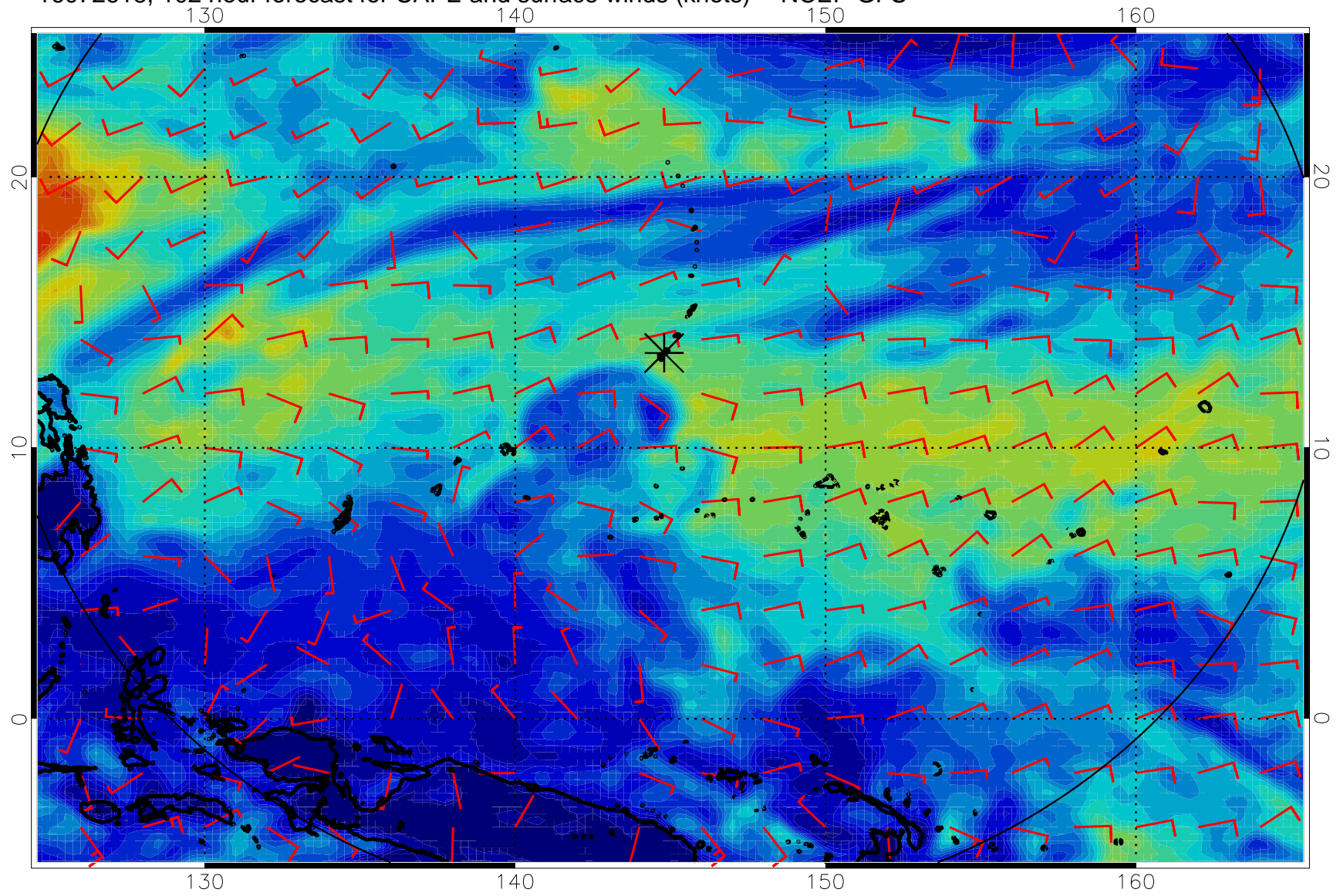


16072612, 96 hour forecast for CAPE and surface winds (knots) -- NCEP GFS

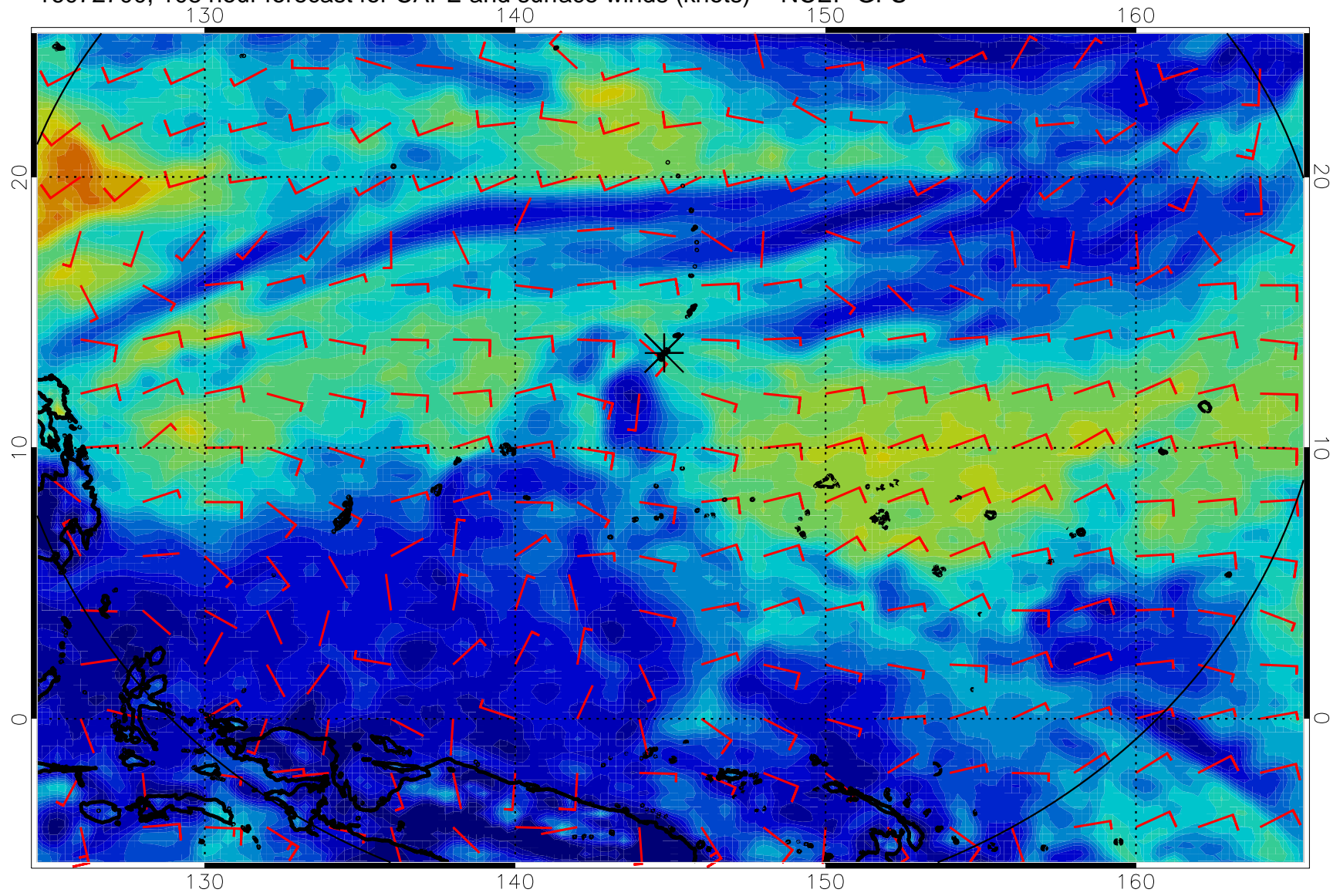




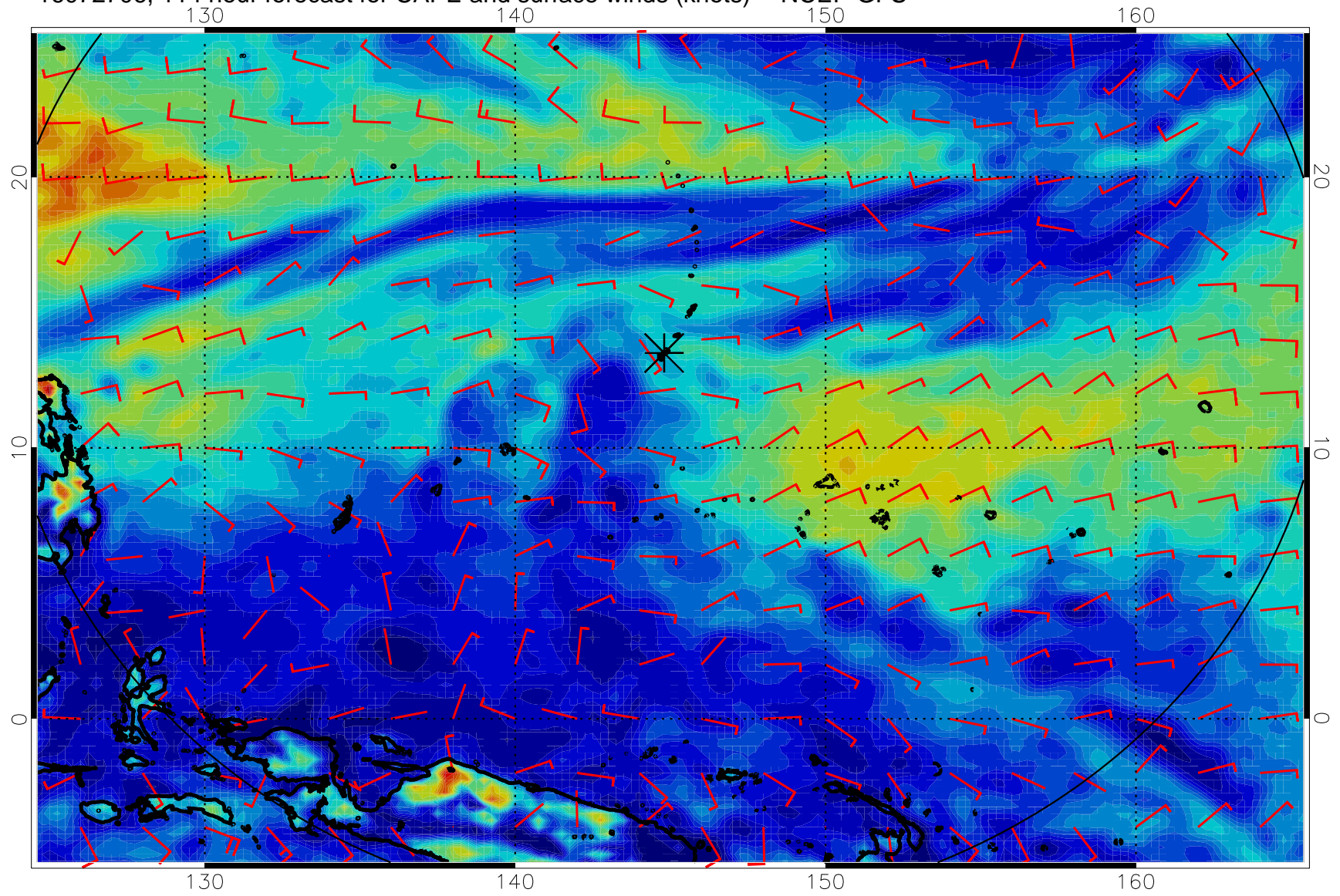
16072618, 102 hour forecast for CAPE and surface winds (knots) -- NCEP GFS



16072700, 108 hour forecast for CAPE and surface winds (knots) -- NCEP GFS



16072706, 114 hour forecast for CAPE and surface winds (knots) -- NCEP GFS



16072712, 120 hour forecast for CAPE and surface winds (knots) -- NCEP GFS

