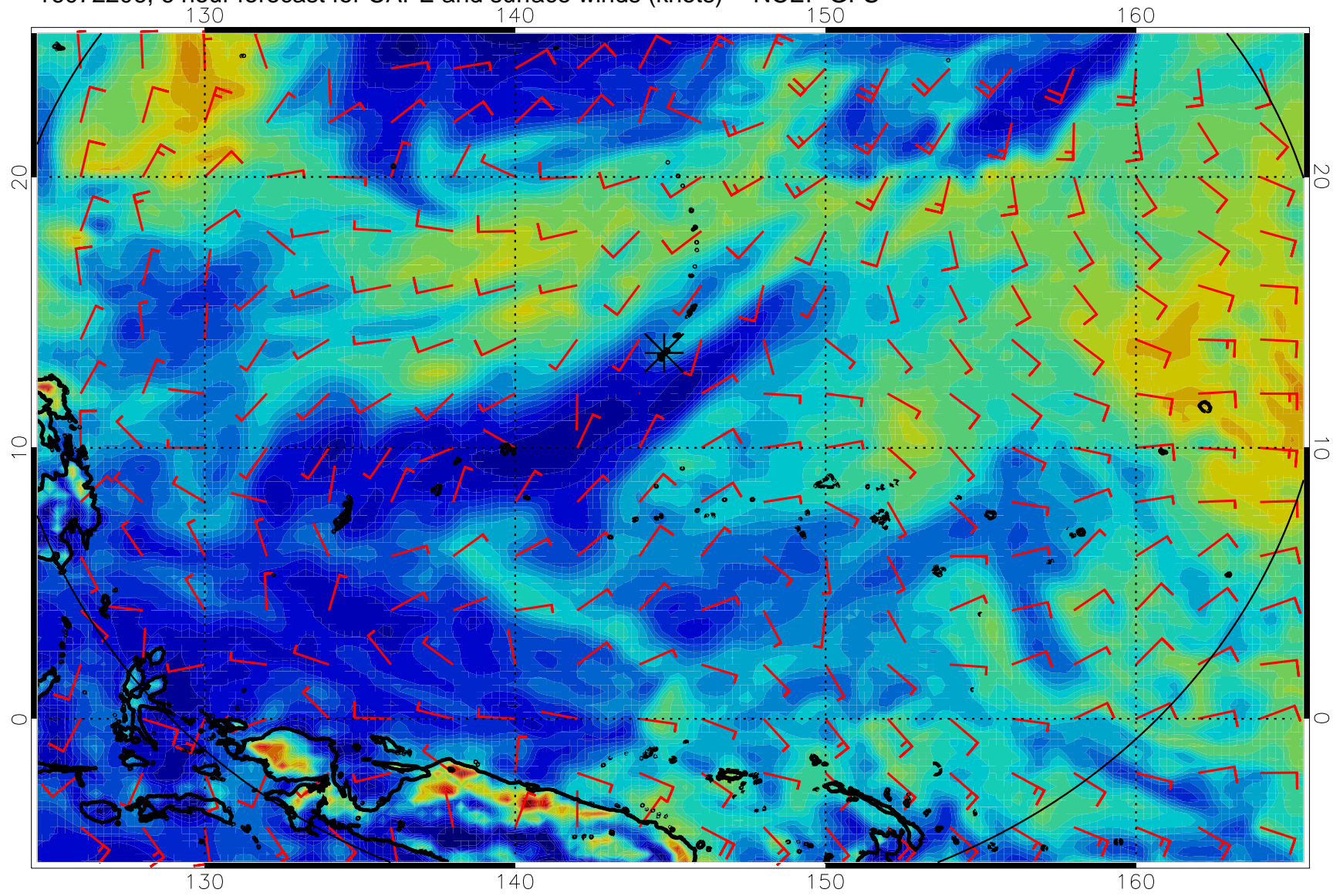
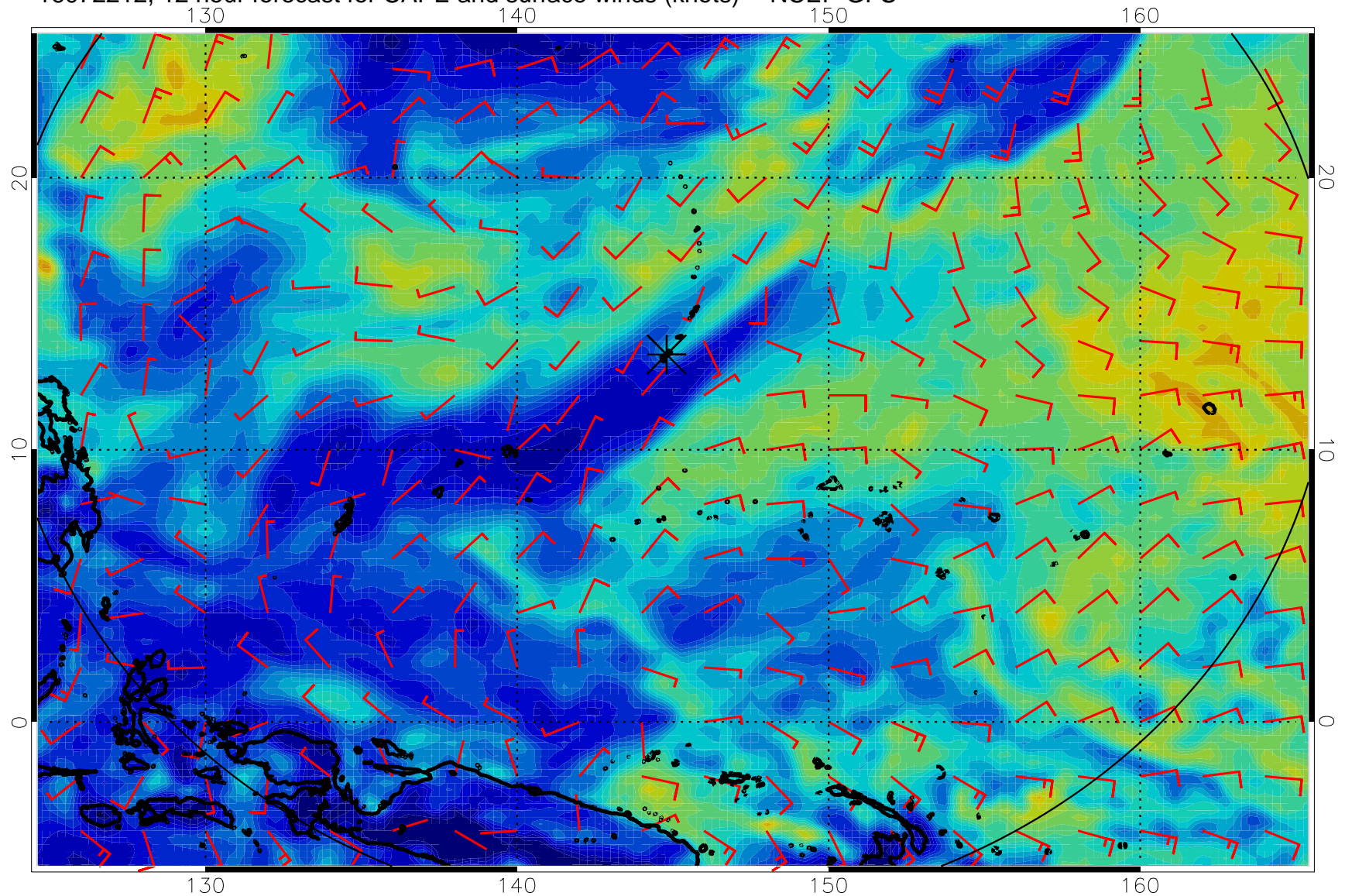


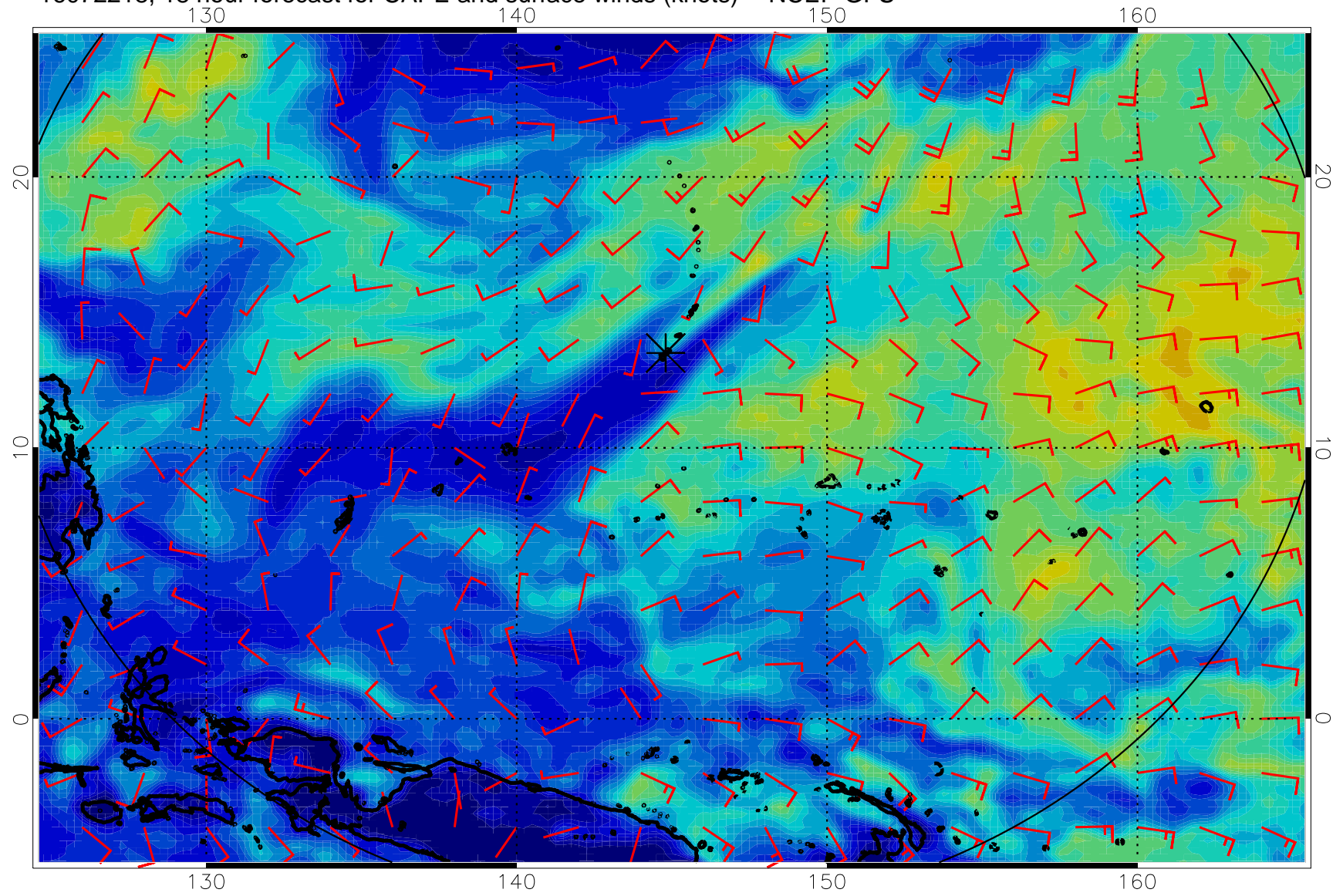
16072206, 6 hour forecast for CAPE and surface winds (knots) -- NCEP GFS



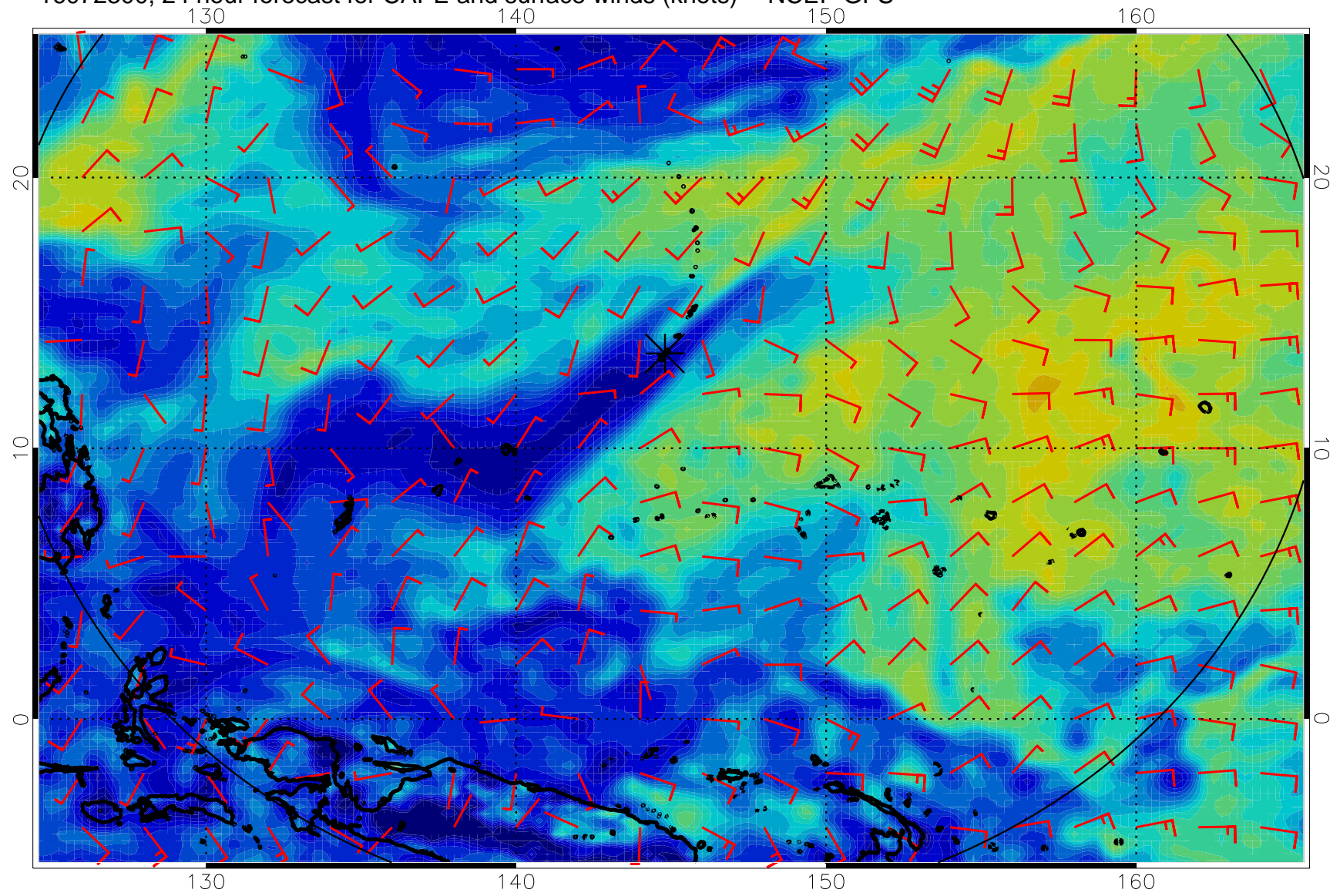
16072212, 12 hour forecast for CAPE and surface winds (knots) -- NCEP GFS



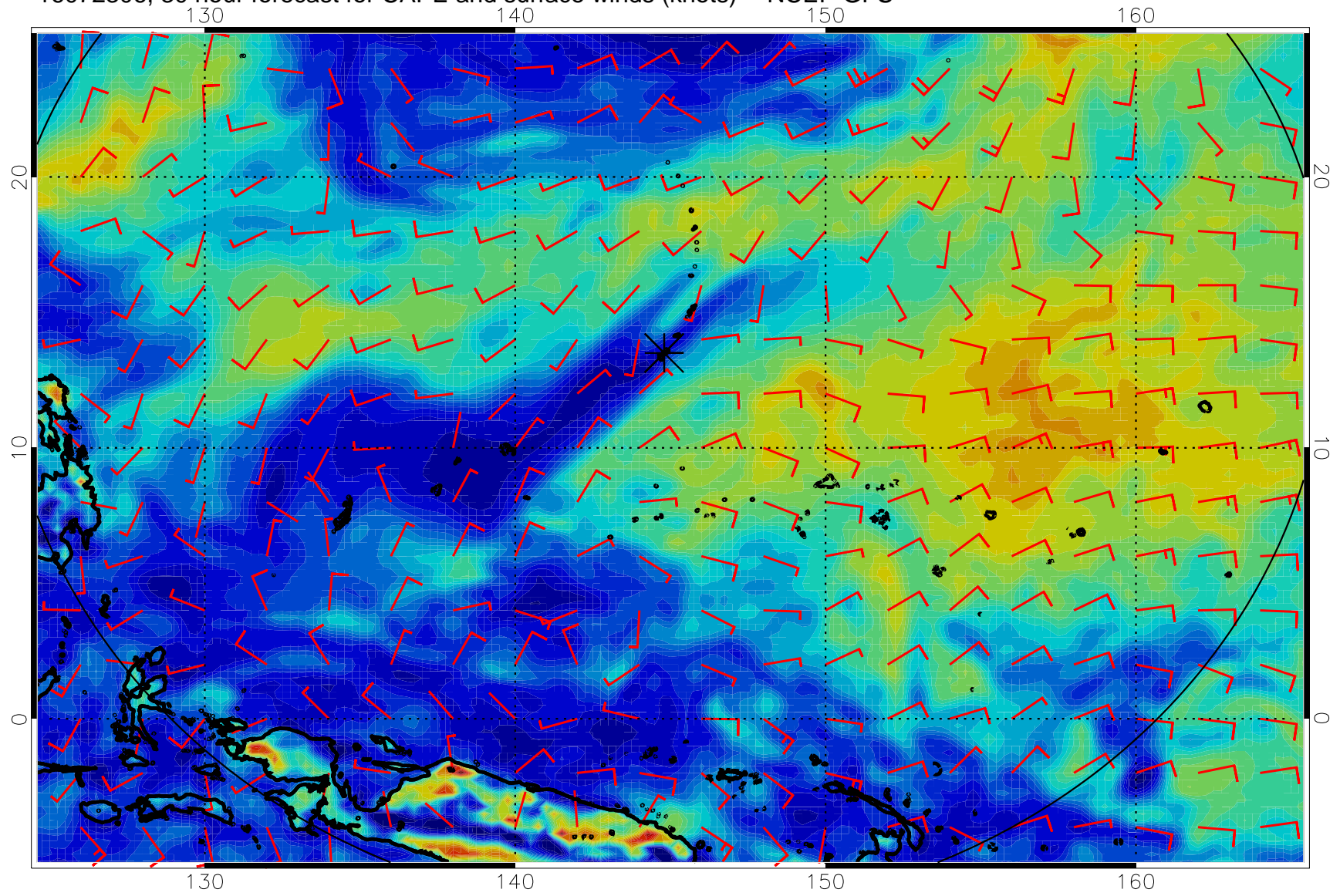
16072218, 18 hour forecast for CAPE and surface winds (knots) -- NCEP GFS



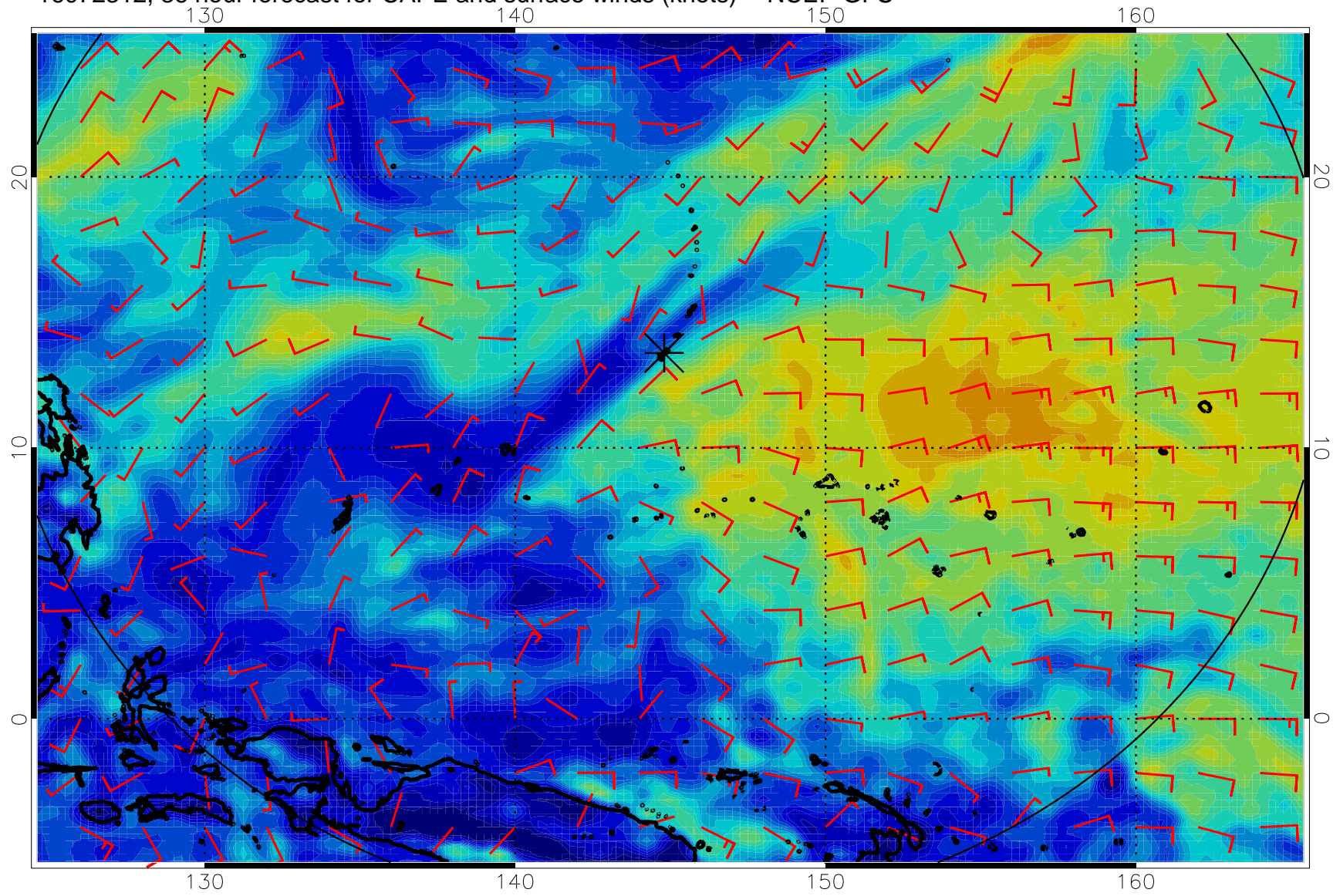
16072300, 24 hour forecast for CAPE and surface winds (knots) -- NCEP GFS



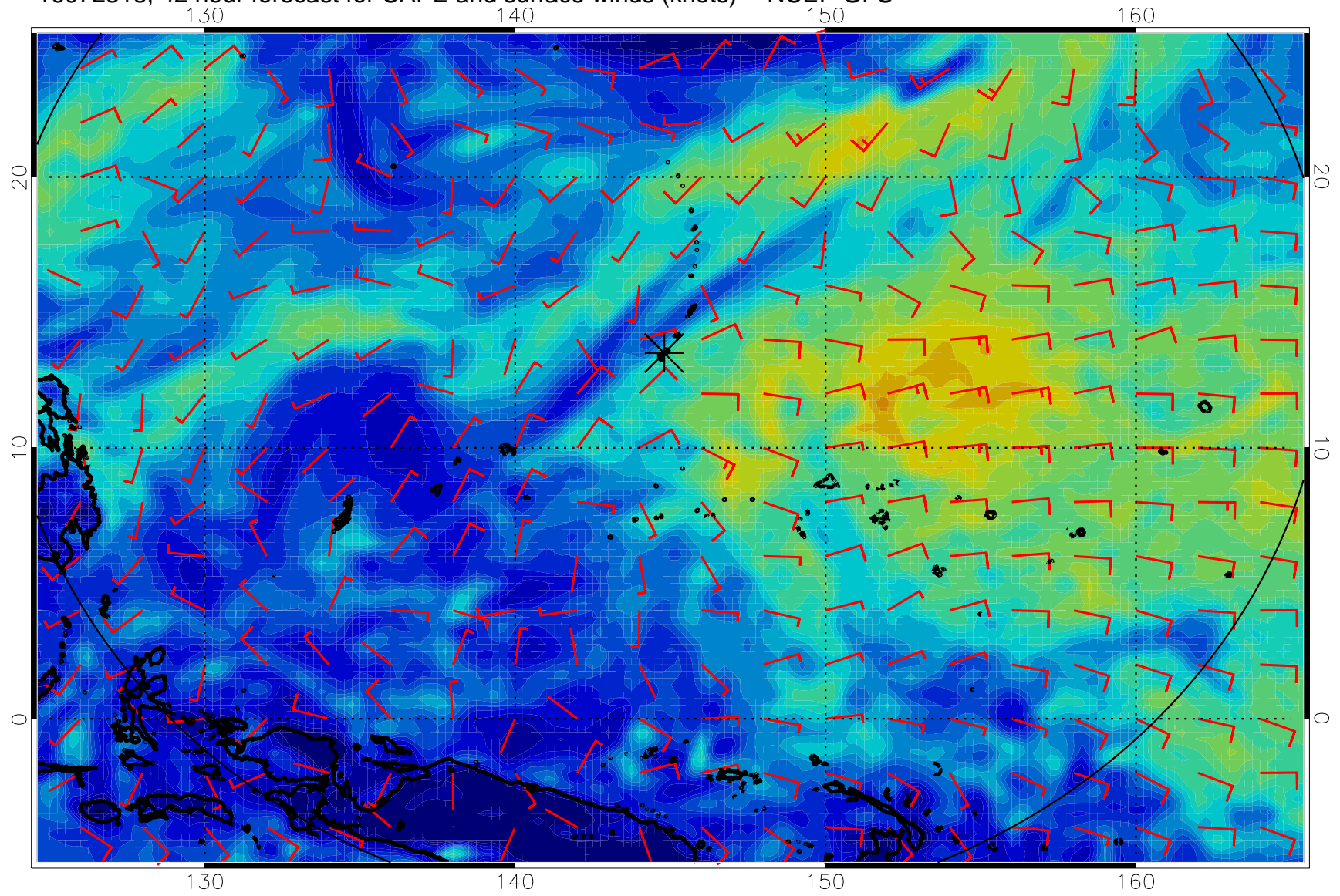
16072306, 30 hour forecast for CAPE and surface winds (knots) -- NCEP GFS



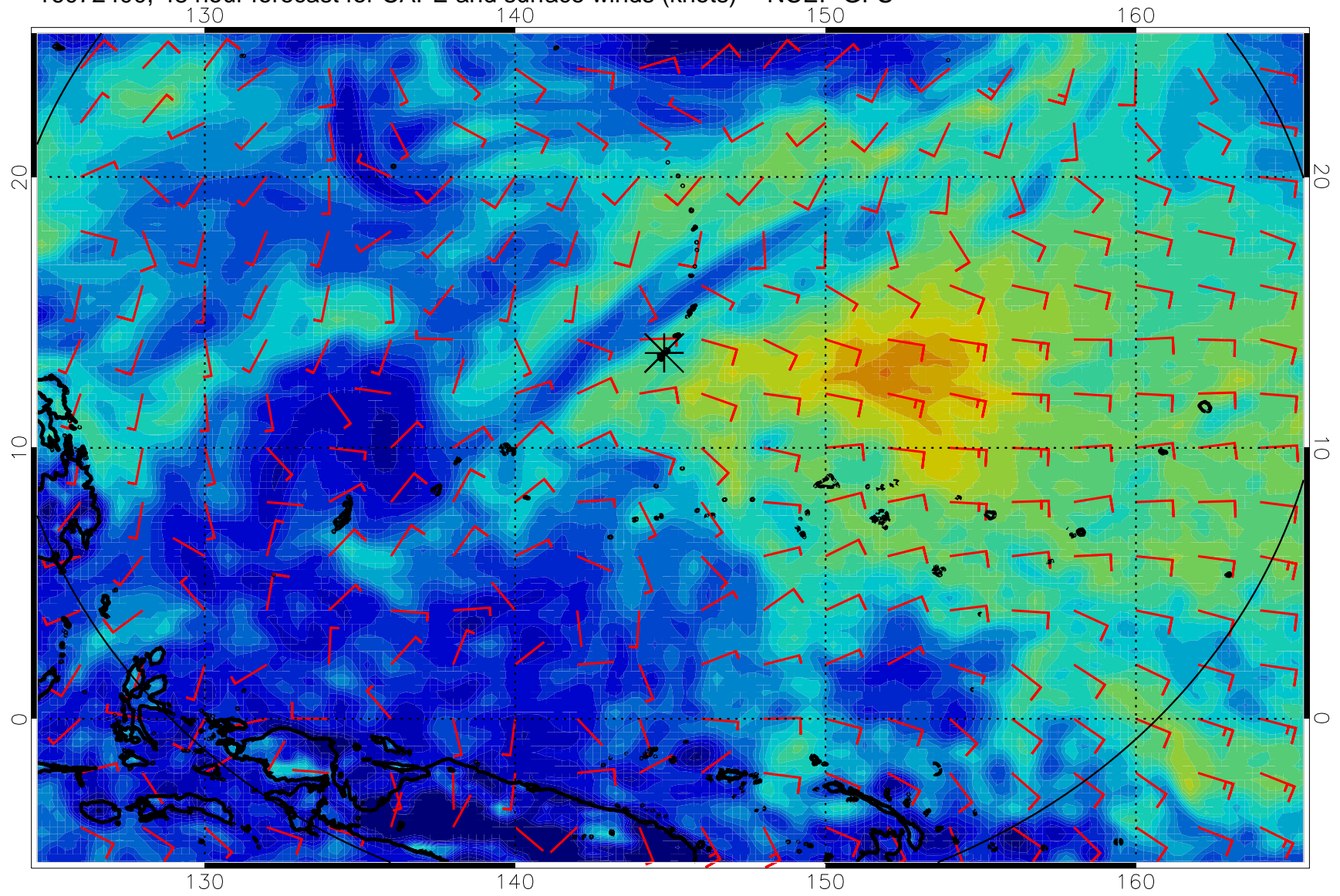
16072312, 36 hour forecast for CAPE and surface winds (knots) -- NCEP GFS



16072318, 42 hour forecast for CAPE and surface winds (knots) -- NCEP GFS

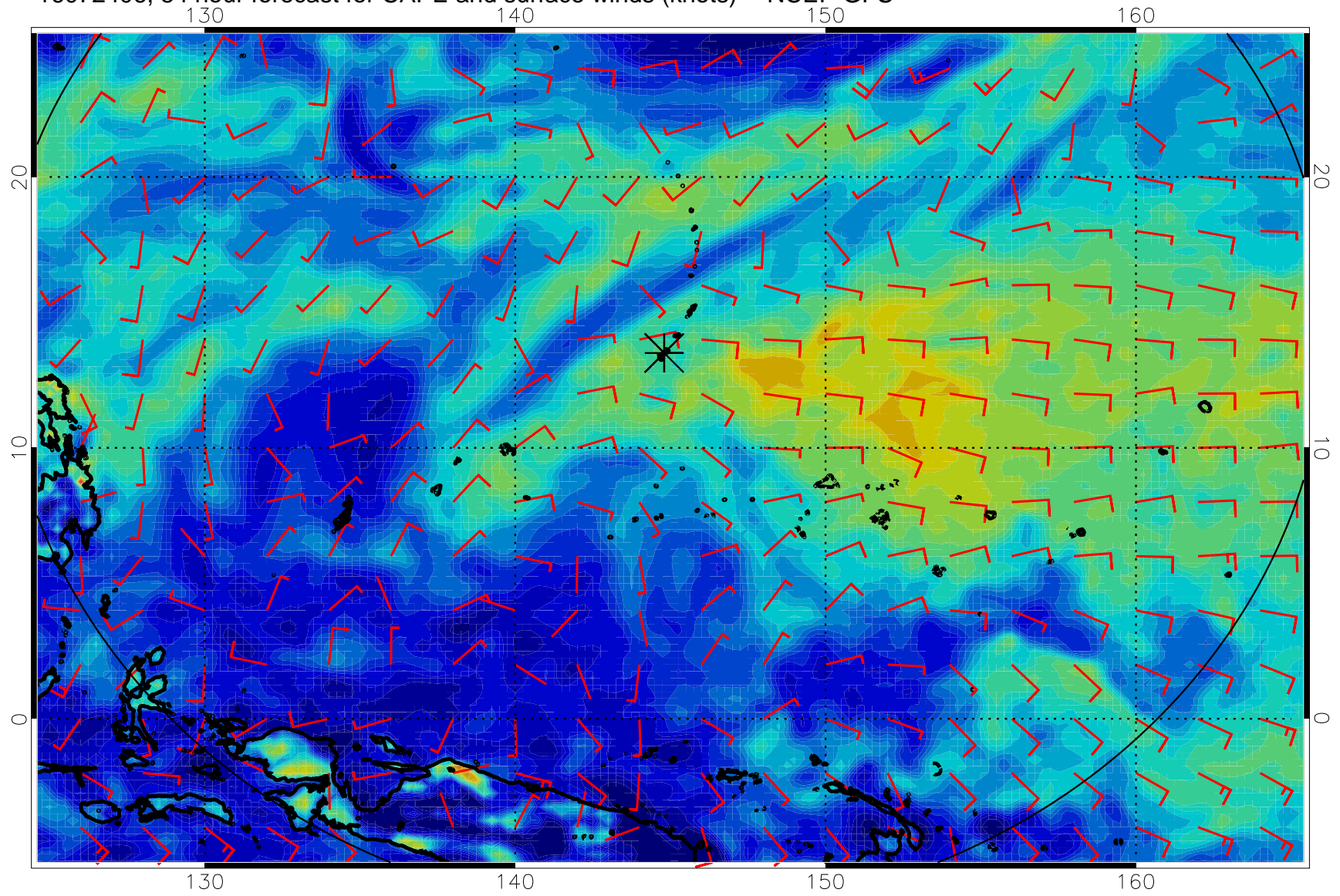


16072400, 48 hour forecast for CAPE and surface winds (knots) -- NCEP GFS

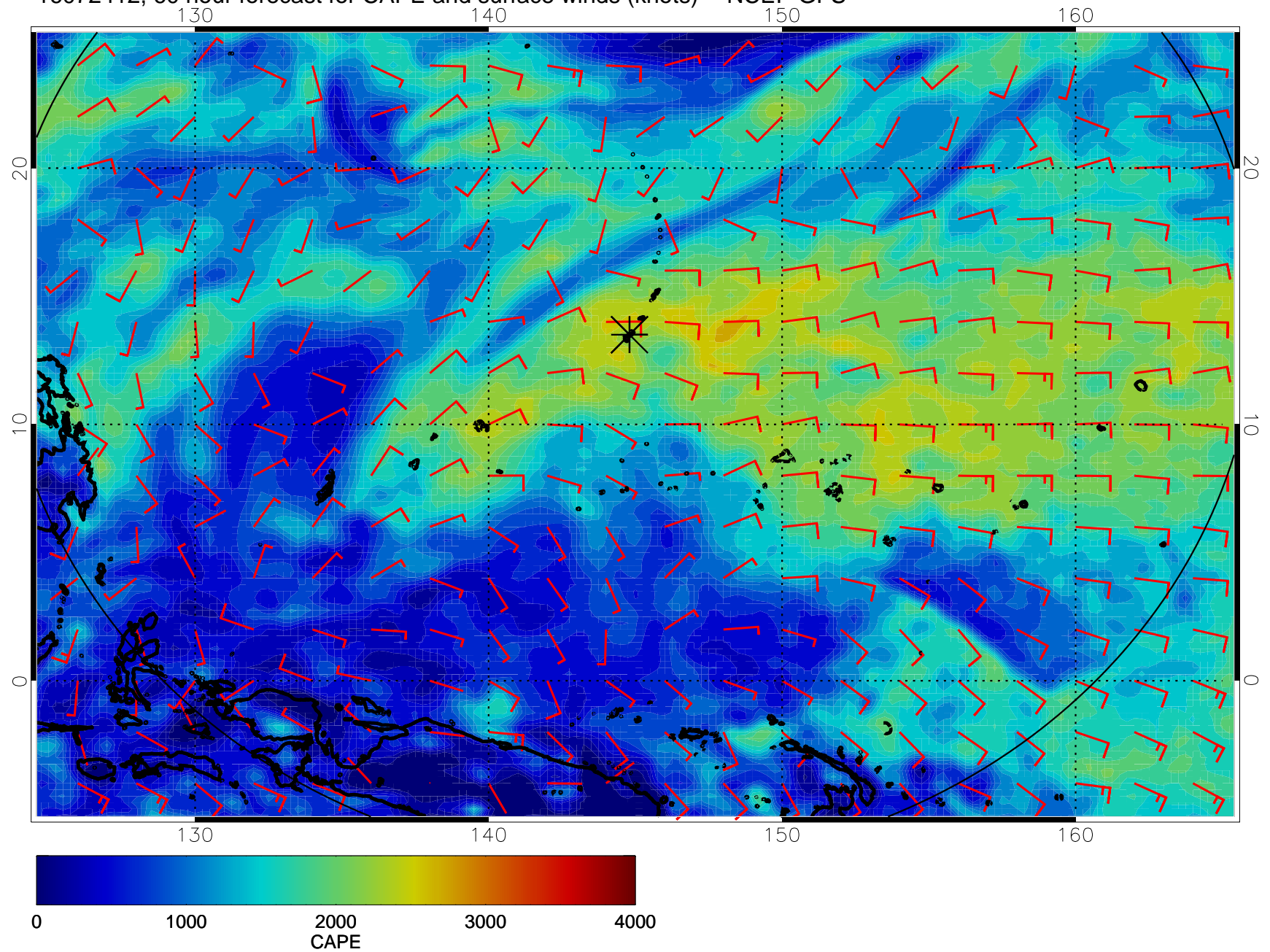




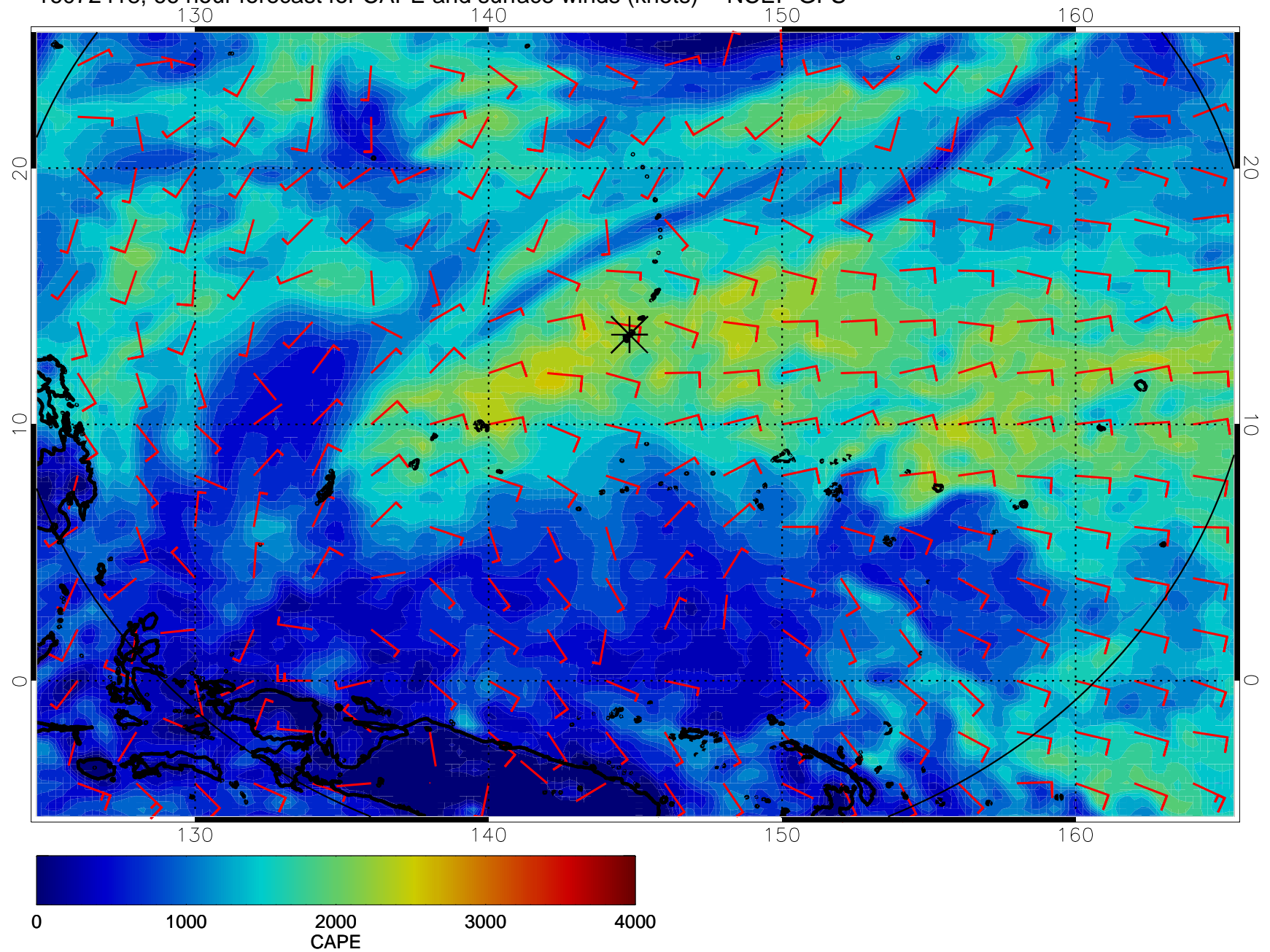
16072406, 54 hour forecast for CAPE and surface winds (knots) -- NCEP GFS



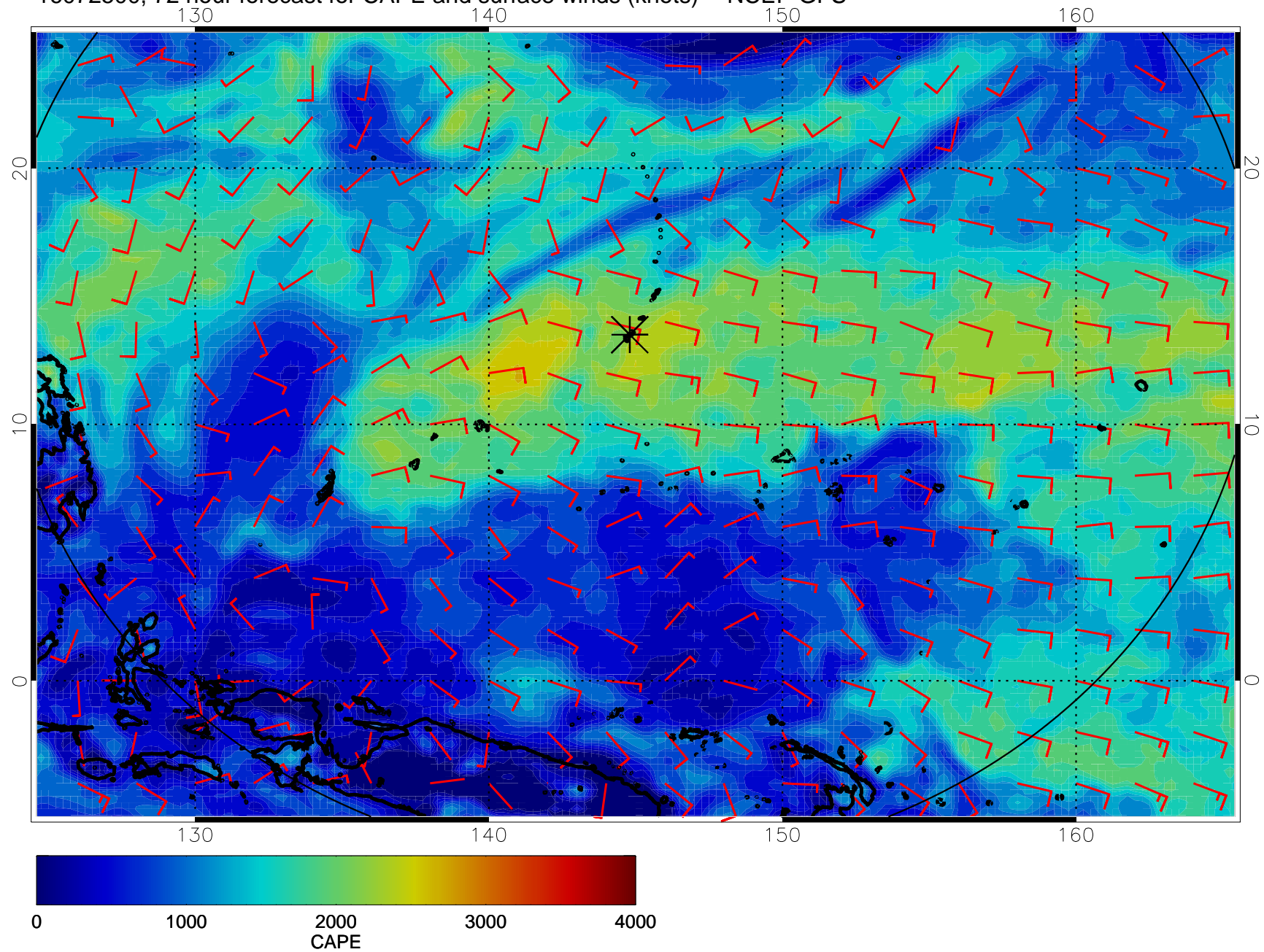
16072412, 60 hour forecast for CAPE and surface winds (knots) -- NCEP GFS



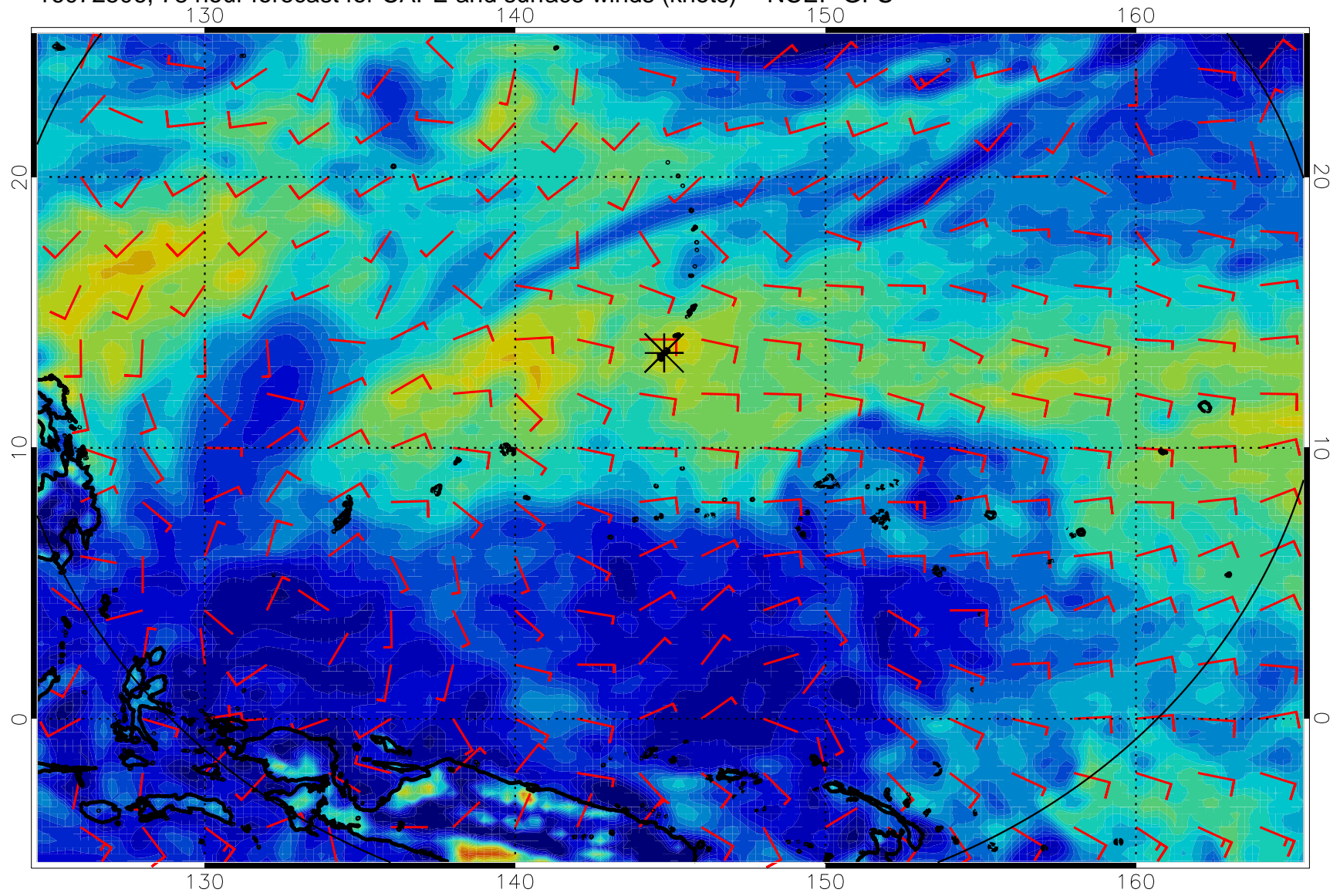
16072418, 66 hour forecast for CAPE and surface winds (knots) -- NCEP GFS



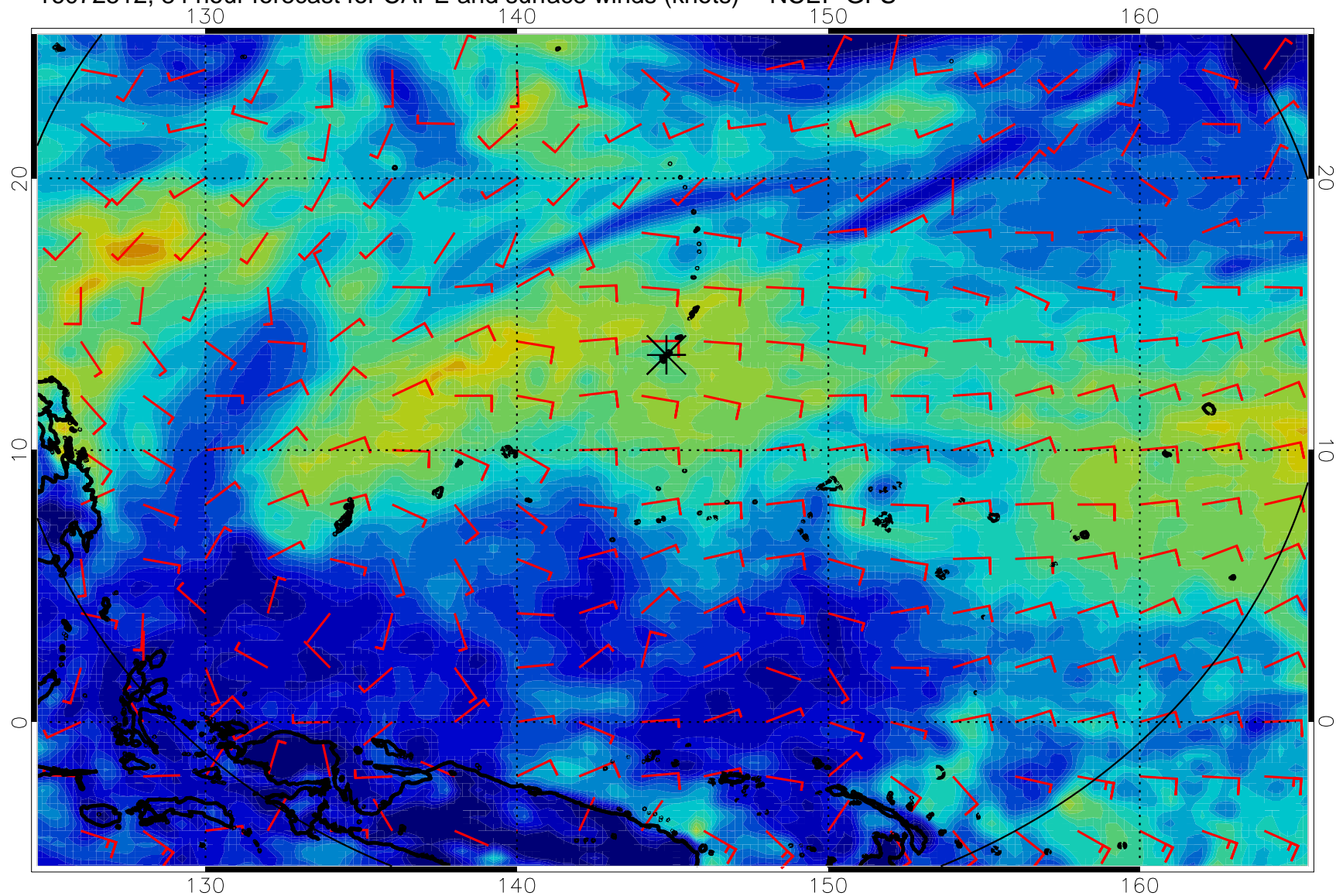
16072500, 72 hour forecast for CAPE and surface winds (knots) -- NCEP GFS



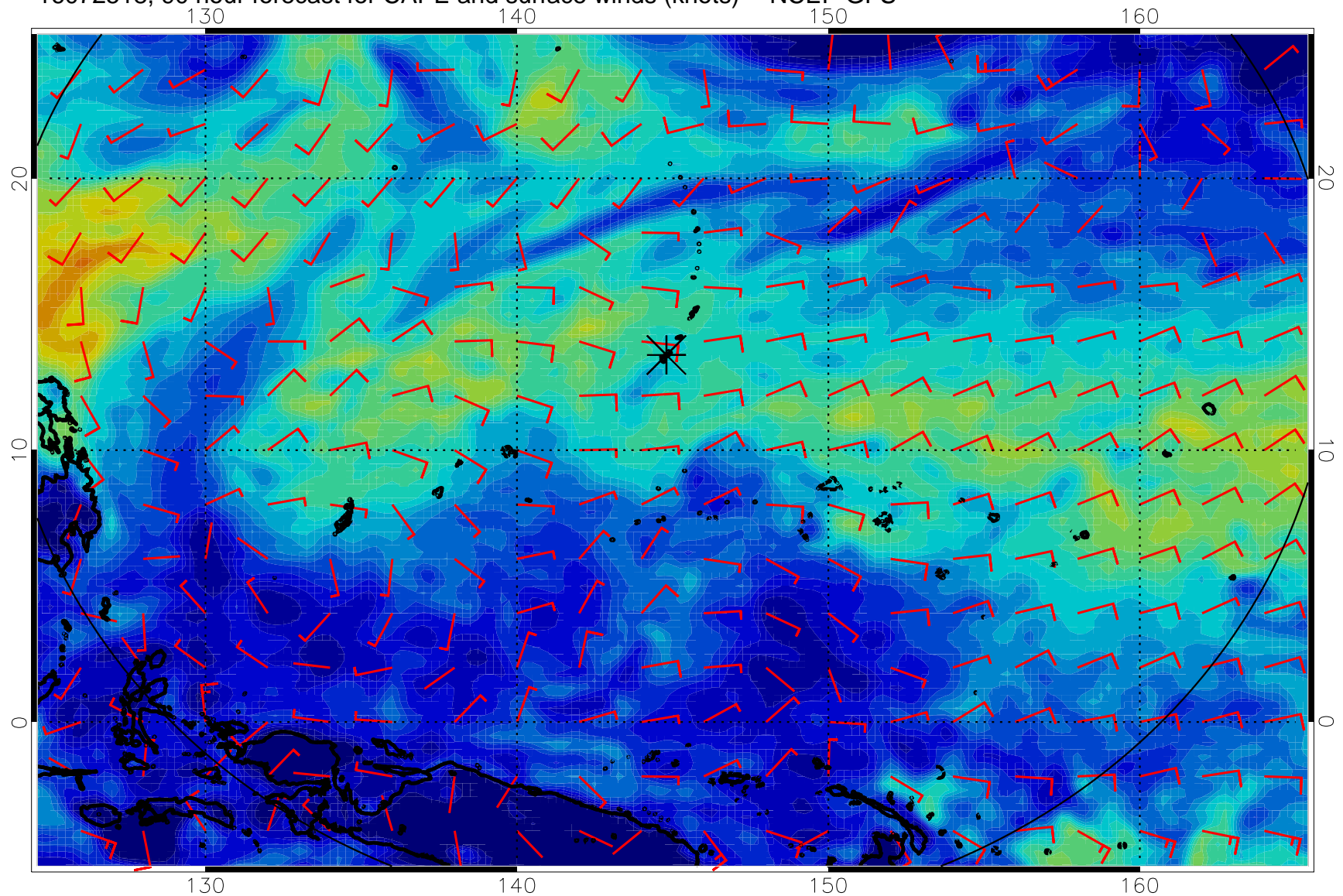
16072506, 78 hour forecast for CAPE and surface winds (knots) -- NCEP GFS



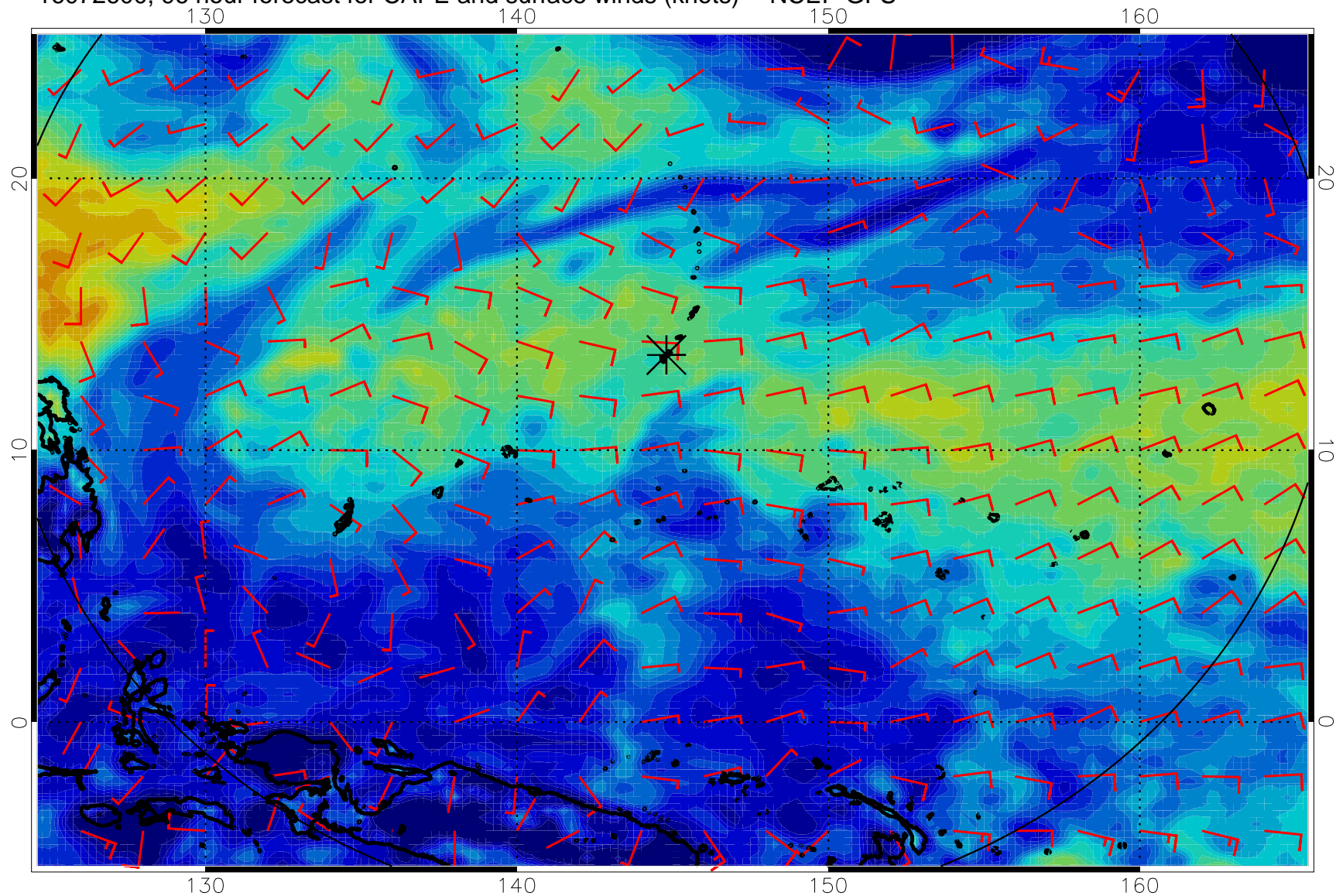
16072512, 84 hour forecast for CAPE and surface winds (knots) -- NCEP GFS



16072518, 90 hour forecast for CAPE and surface winds (knots) -- NCEP GFS

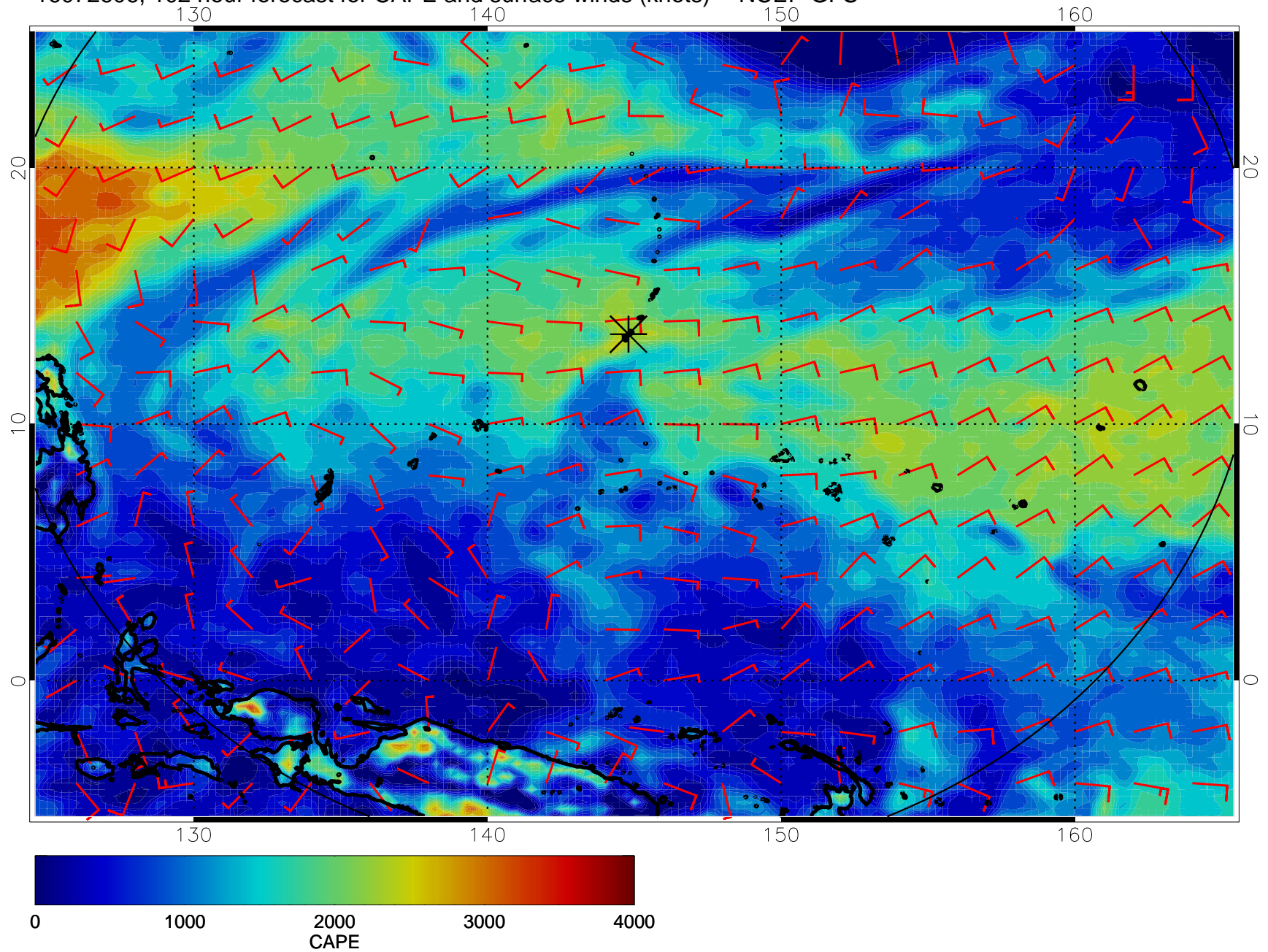


16072600, 96 hour forecast for CAPE and surface winds (knots) -- NCEP GFS

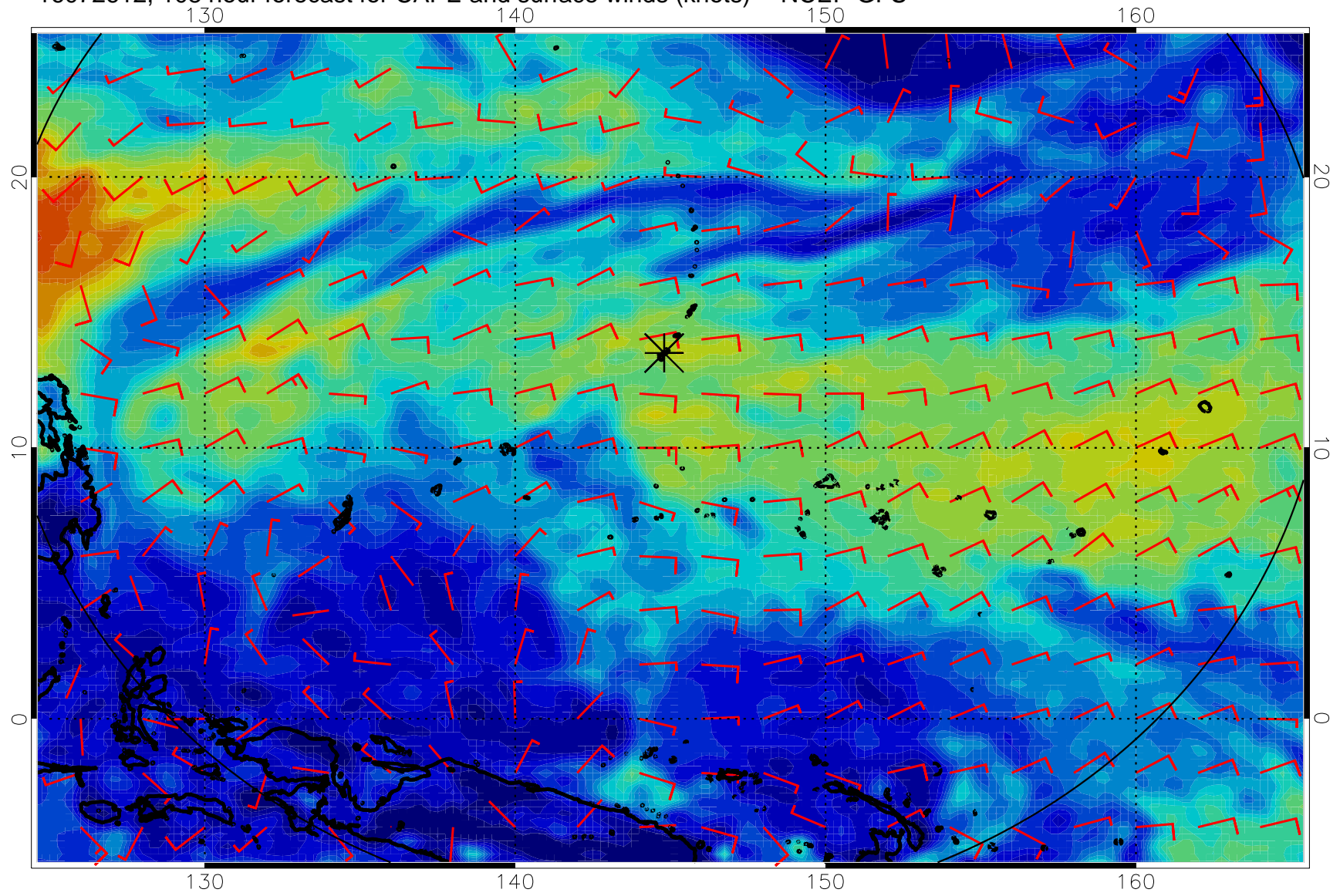




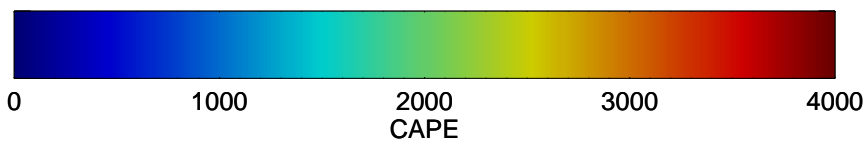
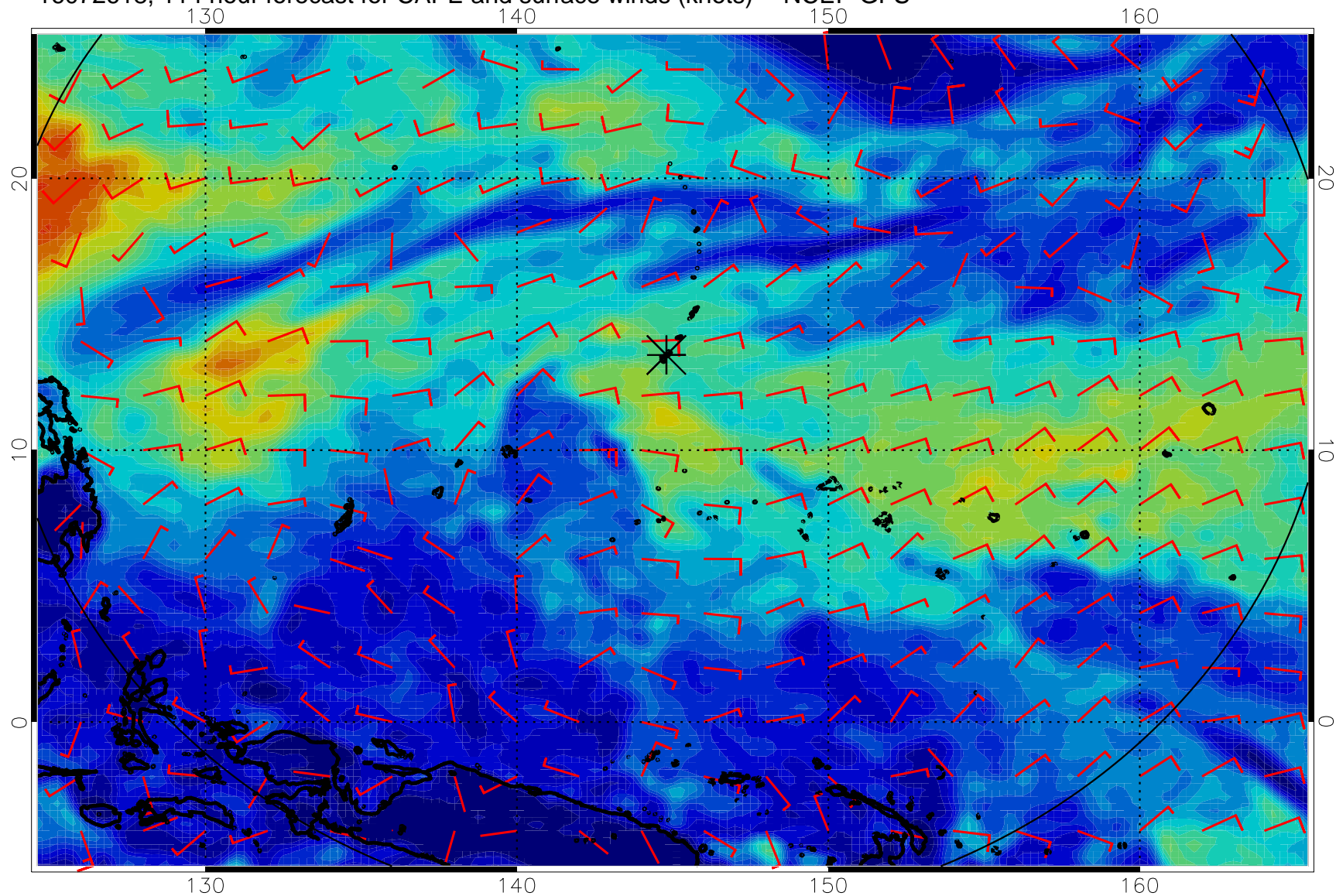
16072606, 102 hour forecast for CAPE and surface winds (knots) -- NCEP GFS



16072612, 108 hour forecast for CAPE and surface winds (knots) -- NCEP GFS



16072618, 114 hour forecast for CAPE and surface winds (knots) -- NCEP GFS



16072700, 120 hour forecast for CAPE and surface winds (knots) -- NCEP GFS

