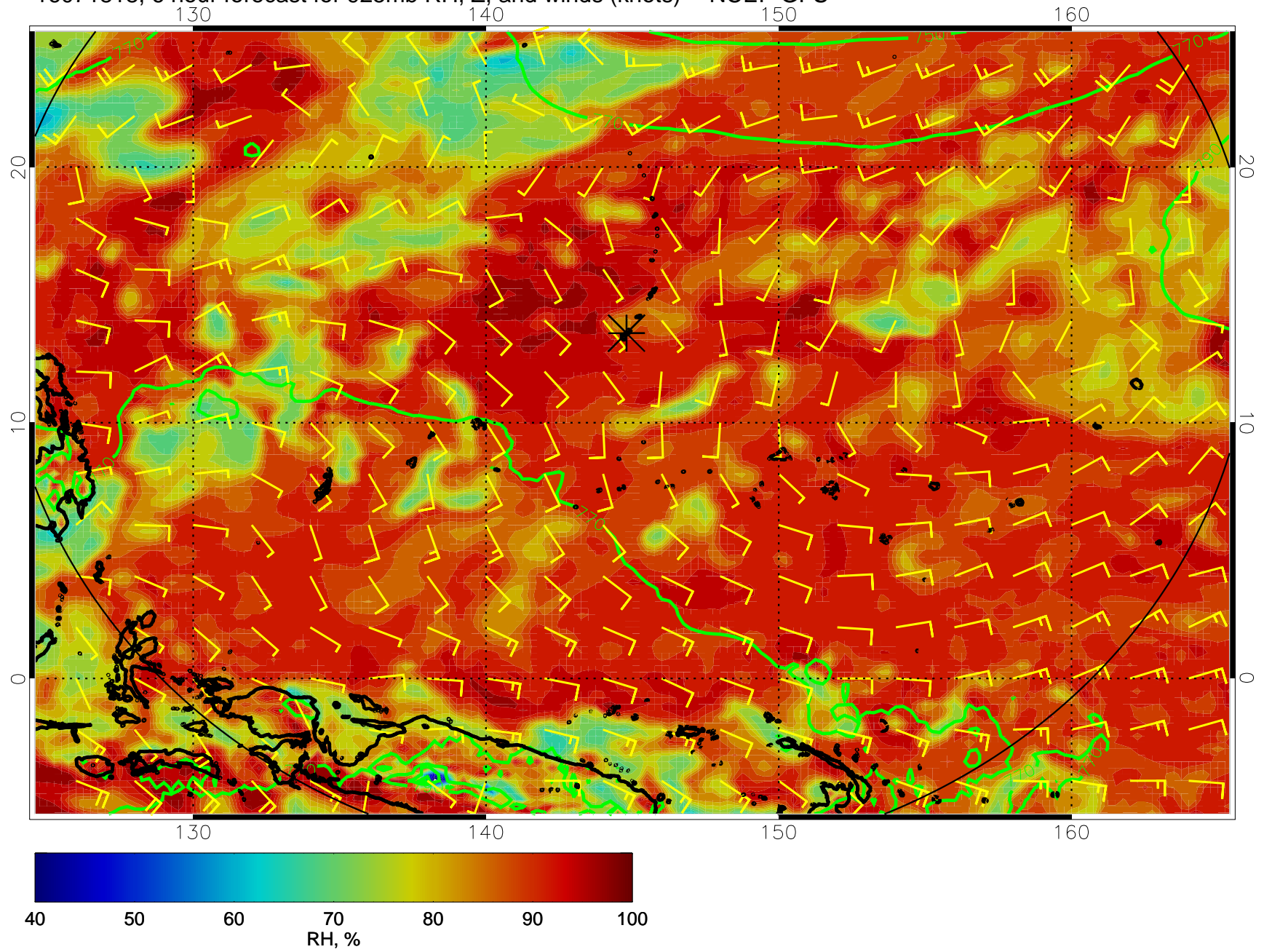
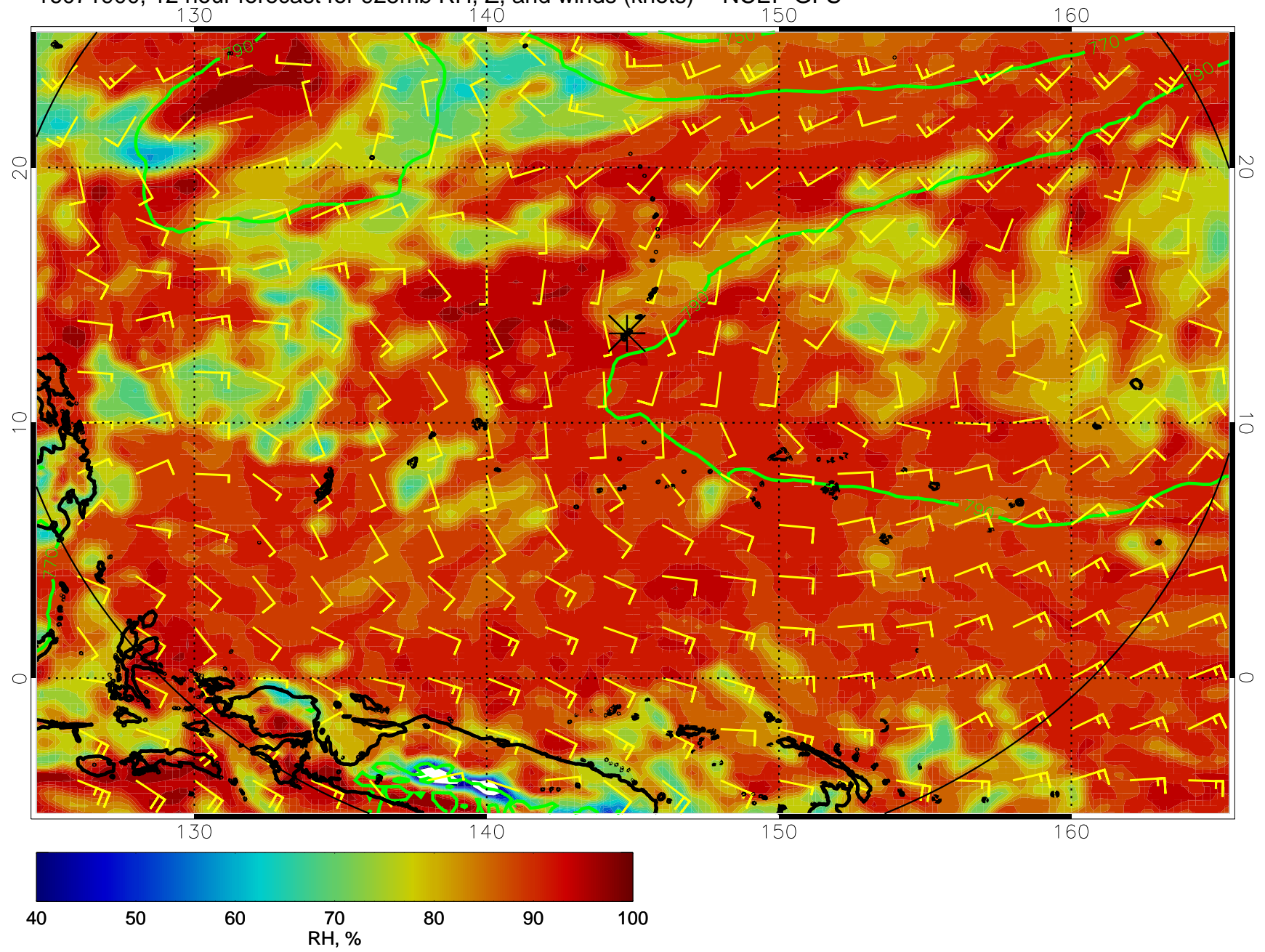


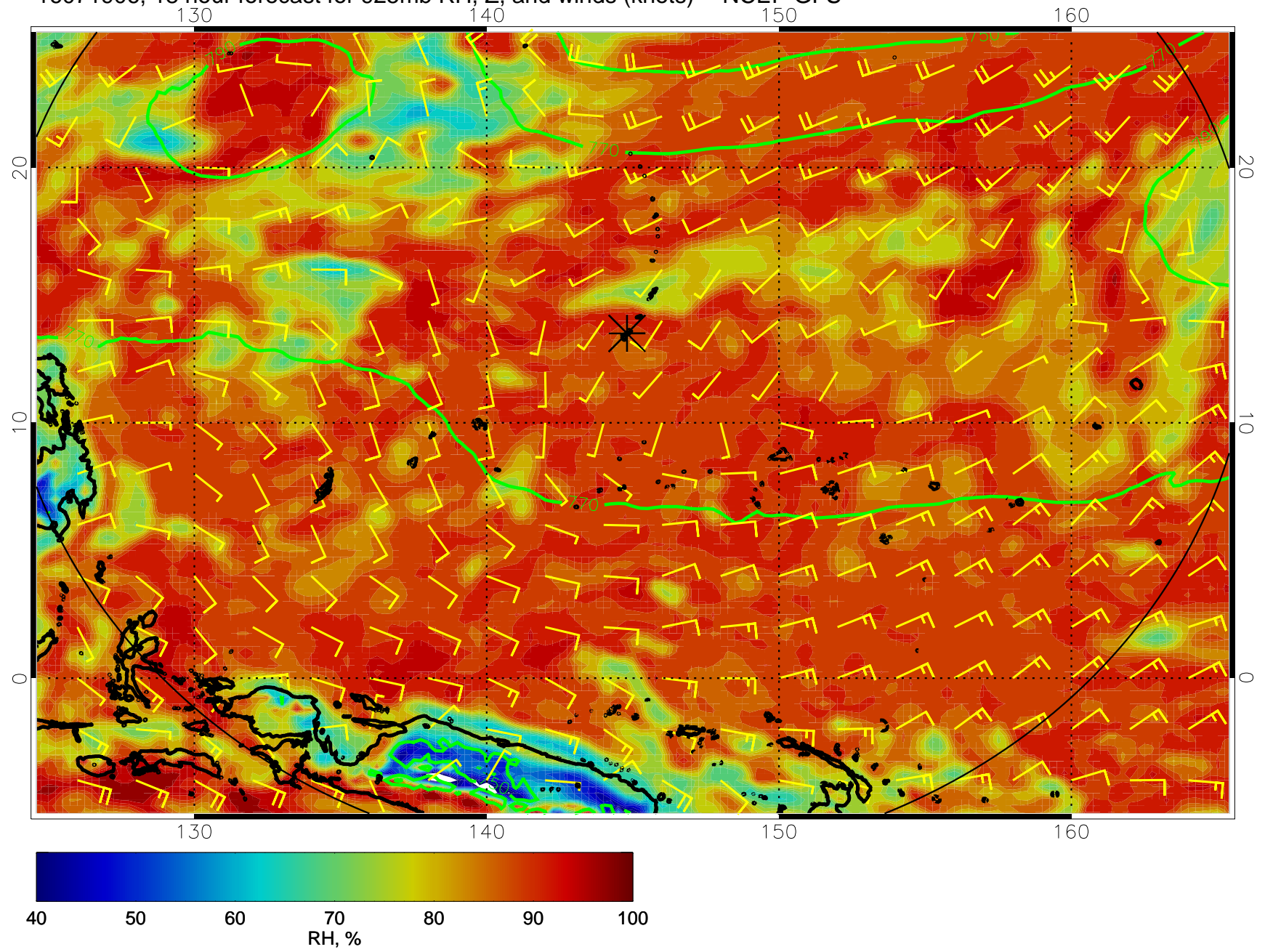
16071818, 6 hour forecast for 925mb RH, Z, and winds (knots) -- NCEP GFS



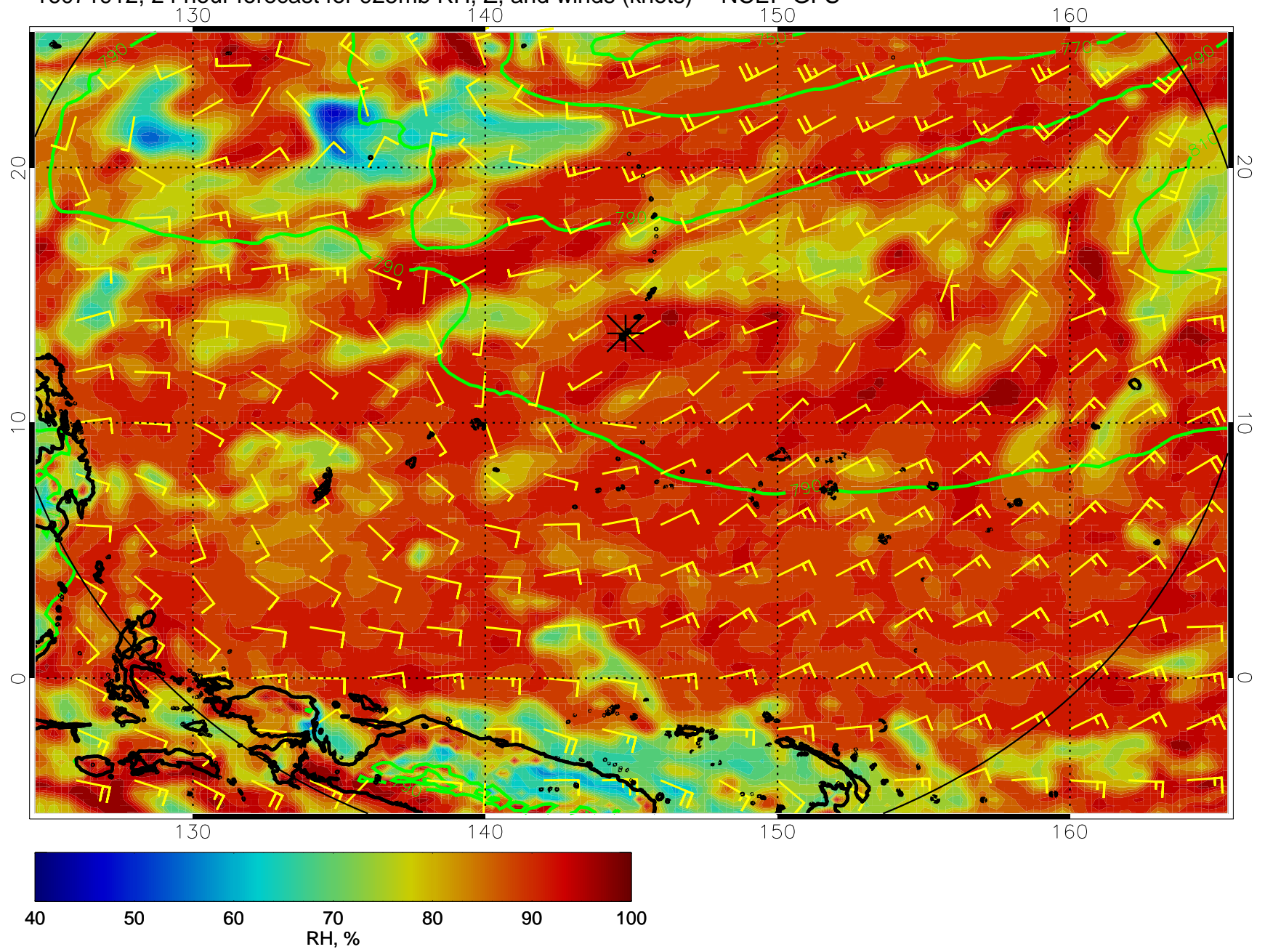
16071900, 12 hour forecast for 925mb RH, Z, and winds (knots) -- NCEP GFS



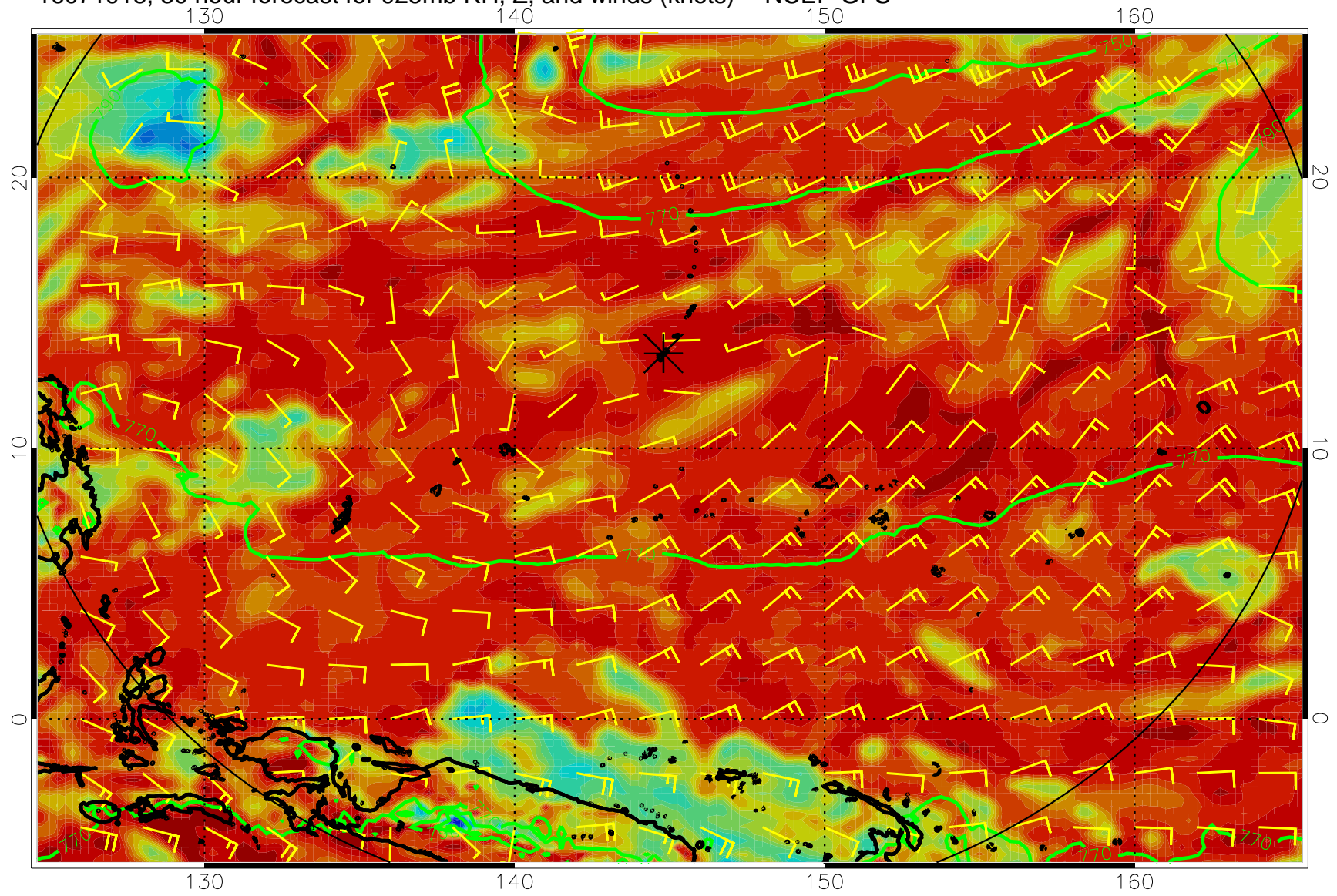
16071906, 18 hour forecast for 925mb RH, Z, and winds (knots) -- NCEP GFS



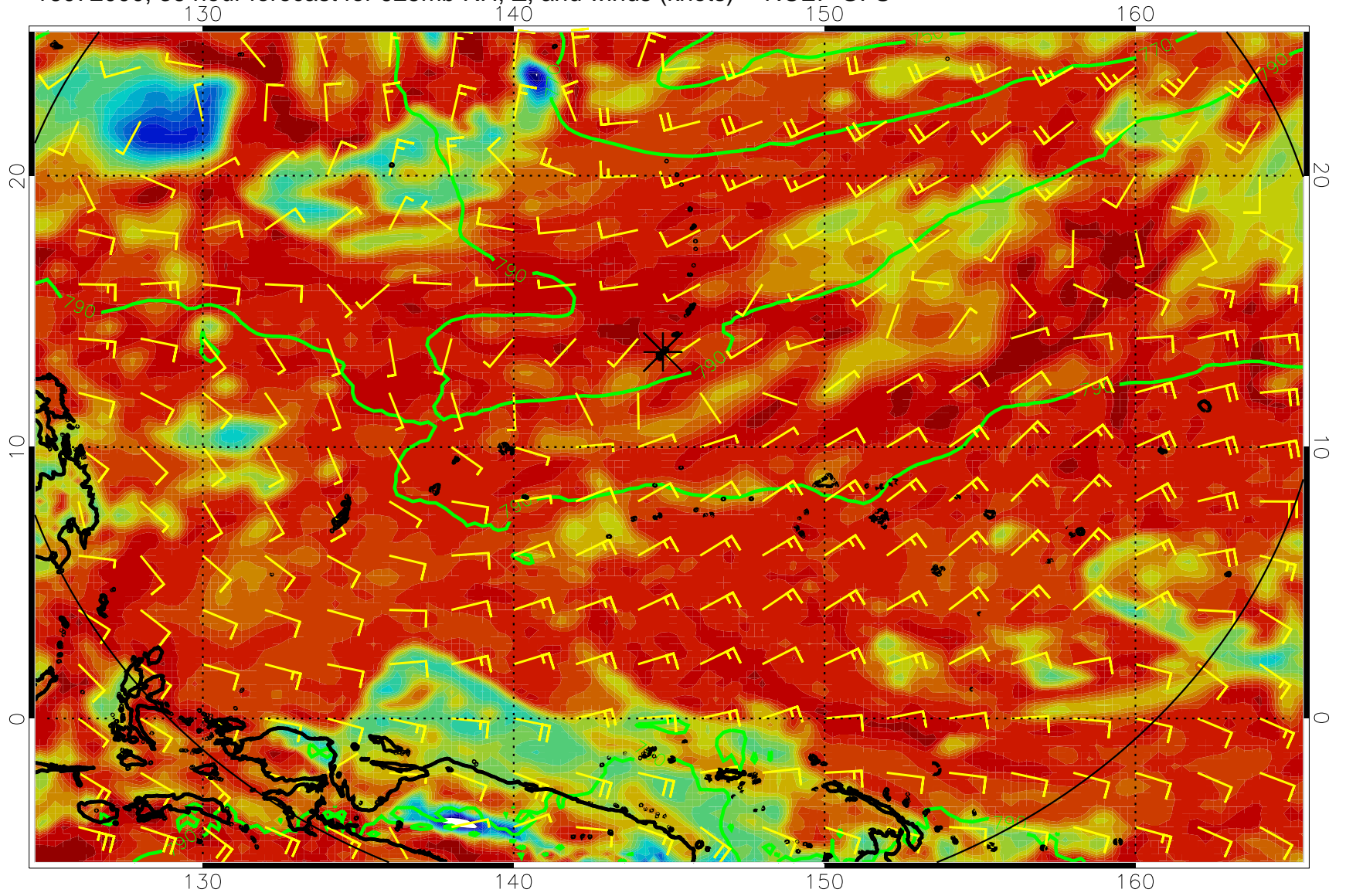
16071912, 24 hour forecast for 925mb RH, Z, and winds (knots) -- NCEP GFS



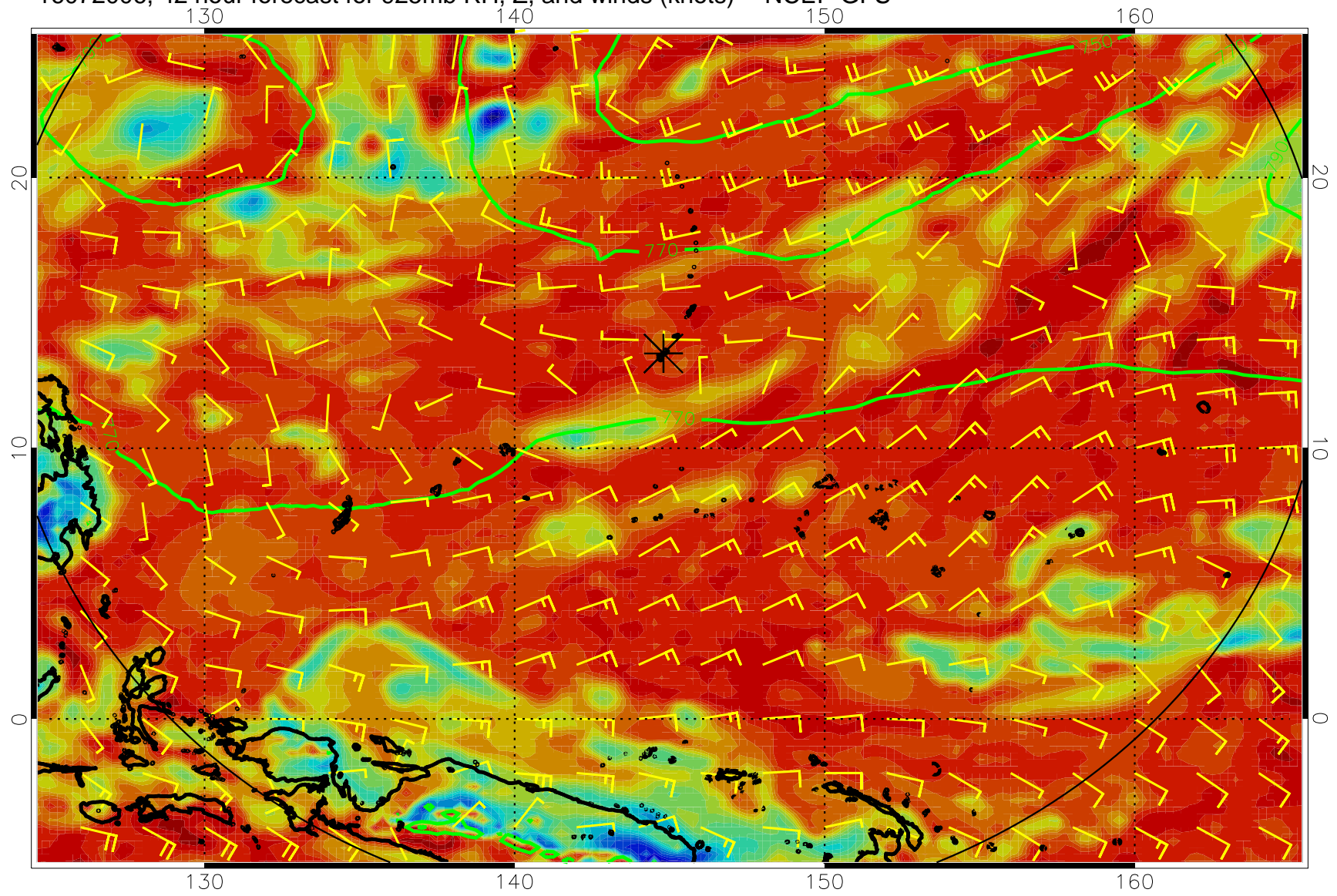
16071918, 30 hour forecast for 925mb RH, Z, and winds (knots) -- NCEP GFS



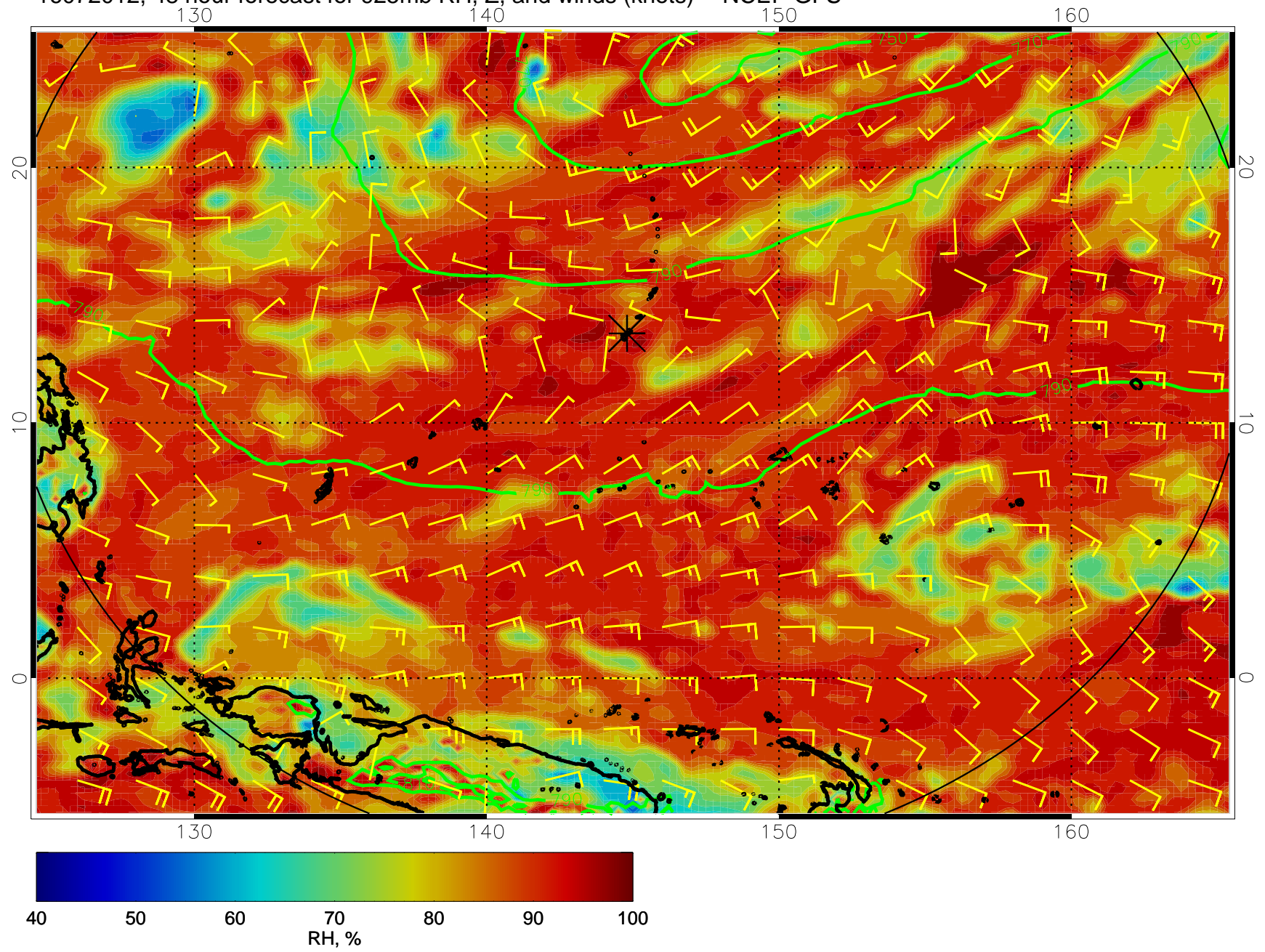
16072000, 36 hour forecast for 925mb RH, Z, and winds (knots) -- NCEP GFS



16072006, 42 hour forecast for 925mb RH, Z, and winds (knots) -- NCEP GFS

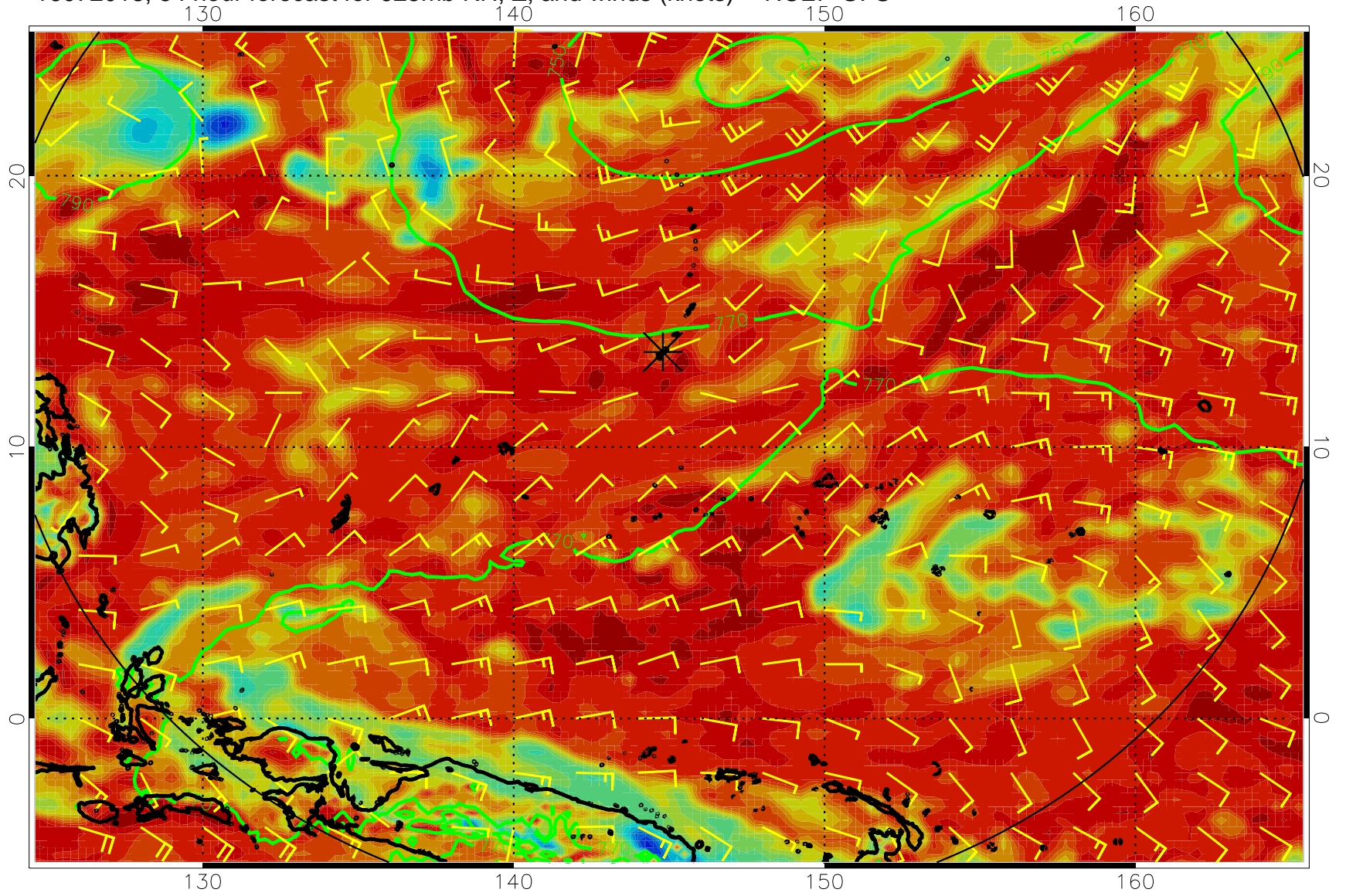


16072012, 48 hour forecast for 925mb RH, Z, and winds (knots) -- NCEP GFS

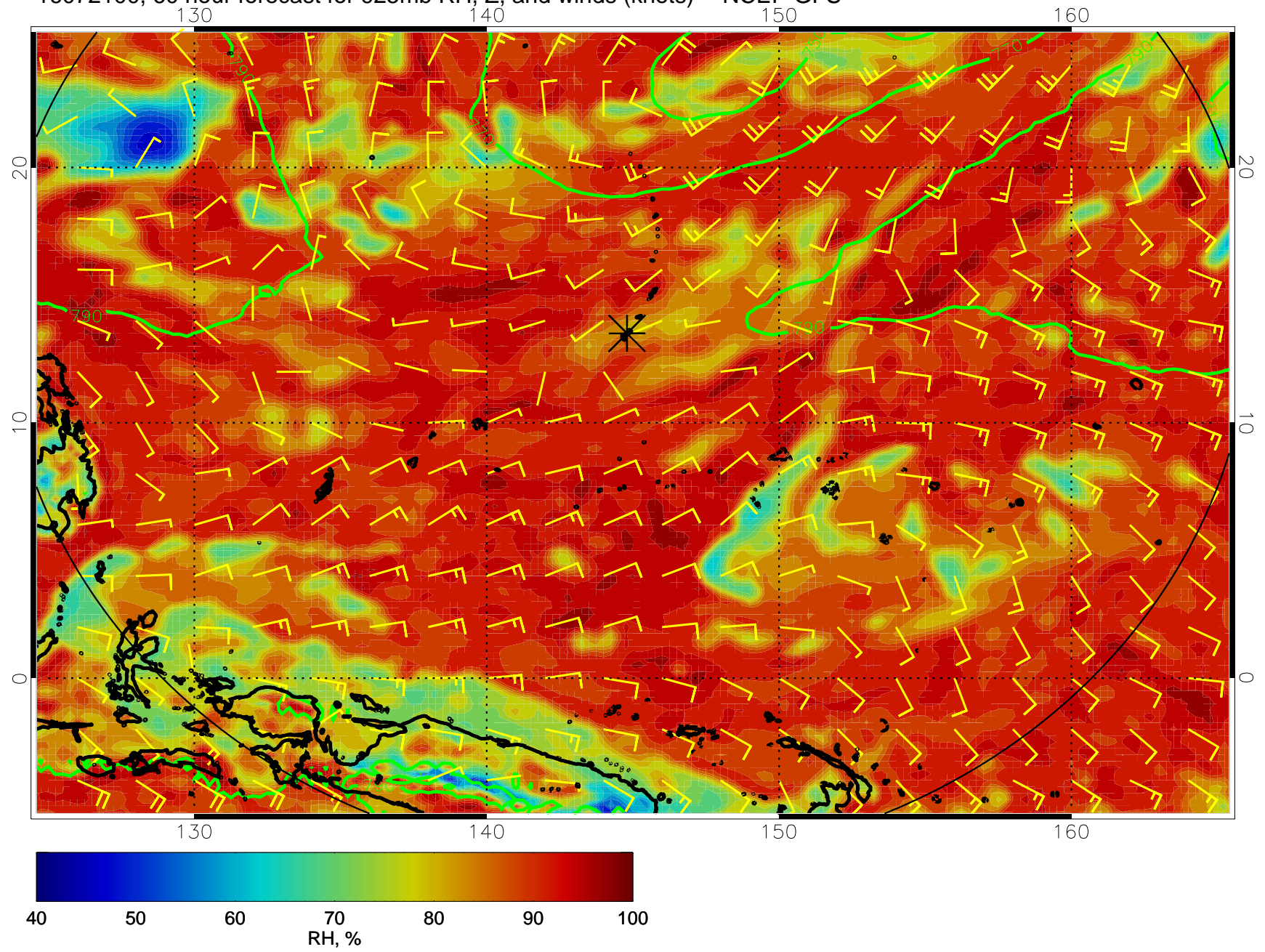




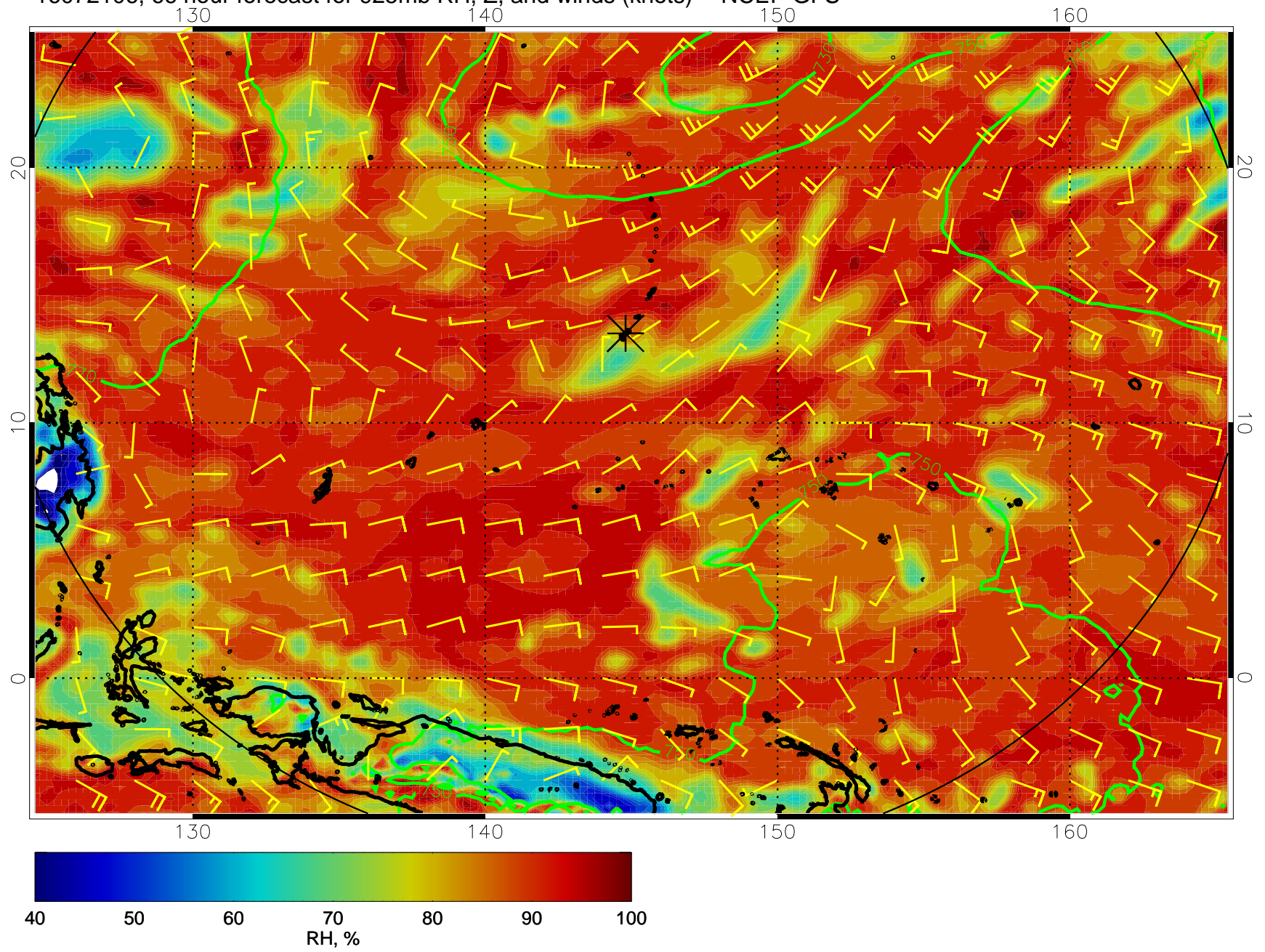
16072018, 54 hour forecast for 925mb RH, Z, and winds (knots) -- NCEP GFS



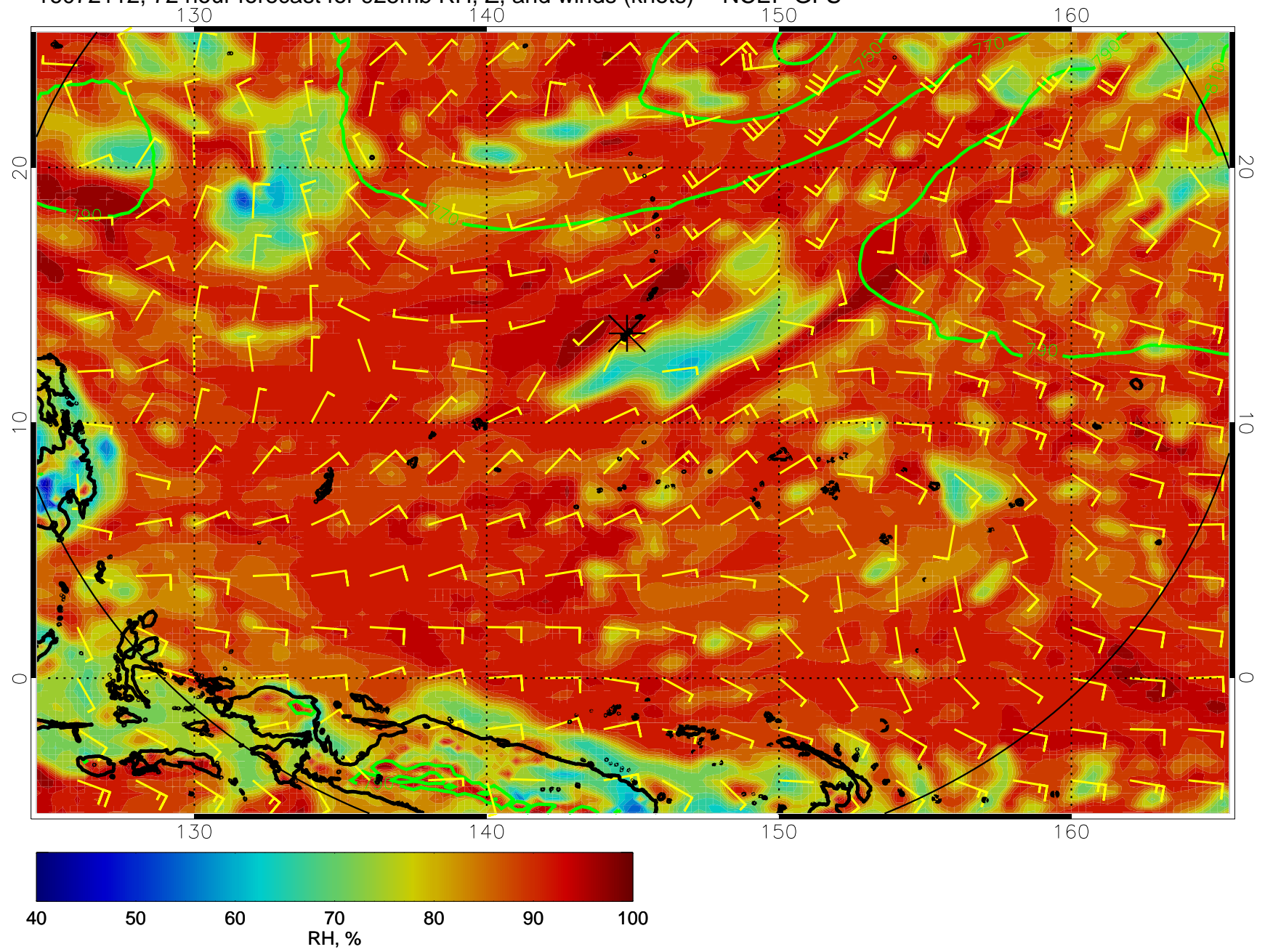
16072100, 60 hour forecast for 925mb RH, Z, and winds (knots) -- NCEP GFS



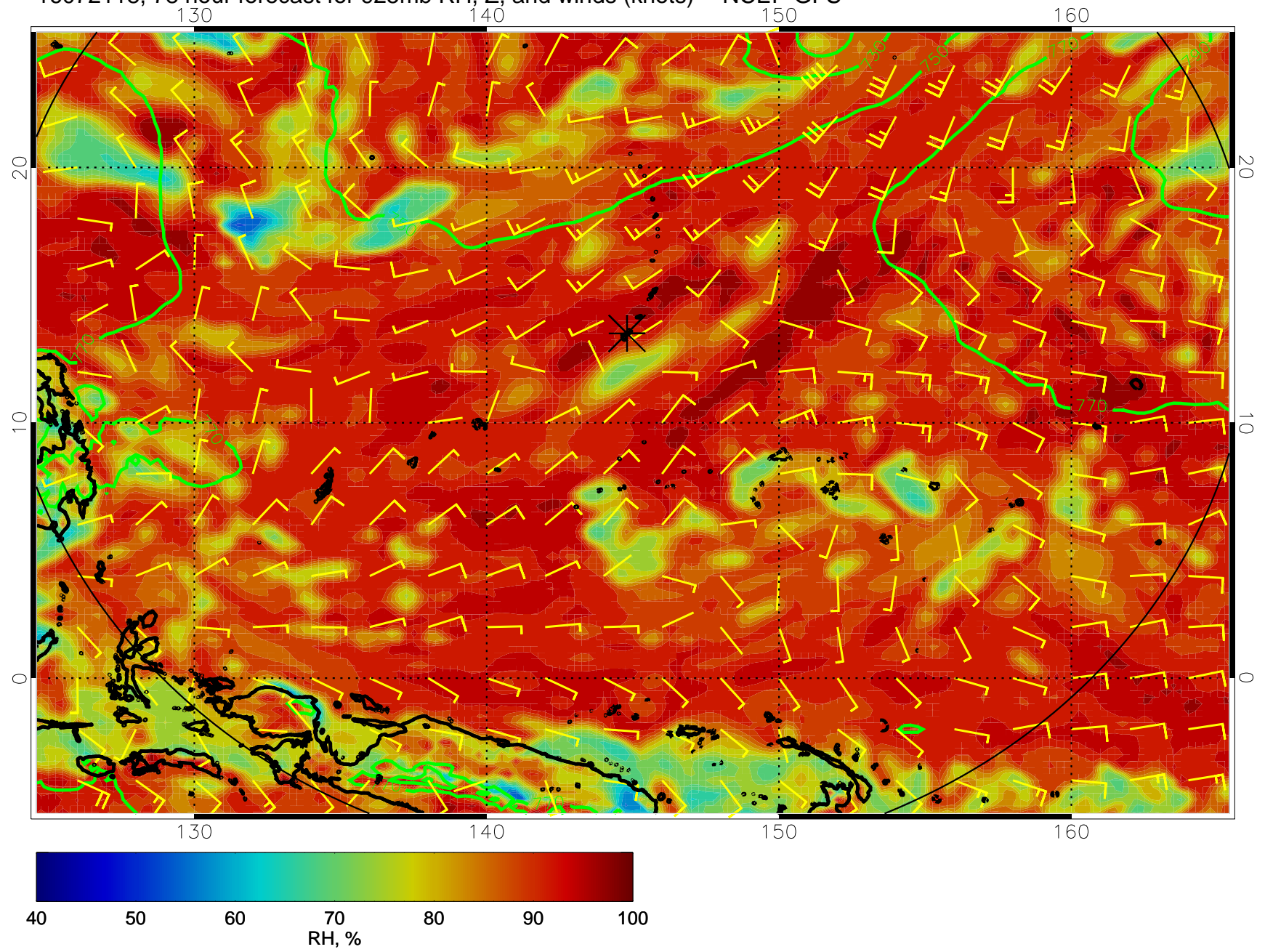
16072106, 66 hour forecast for 925mb RH, Z, and winds (knots) -- NCEP GFS



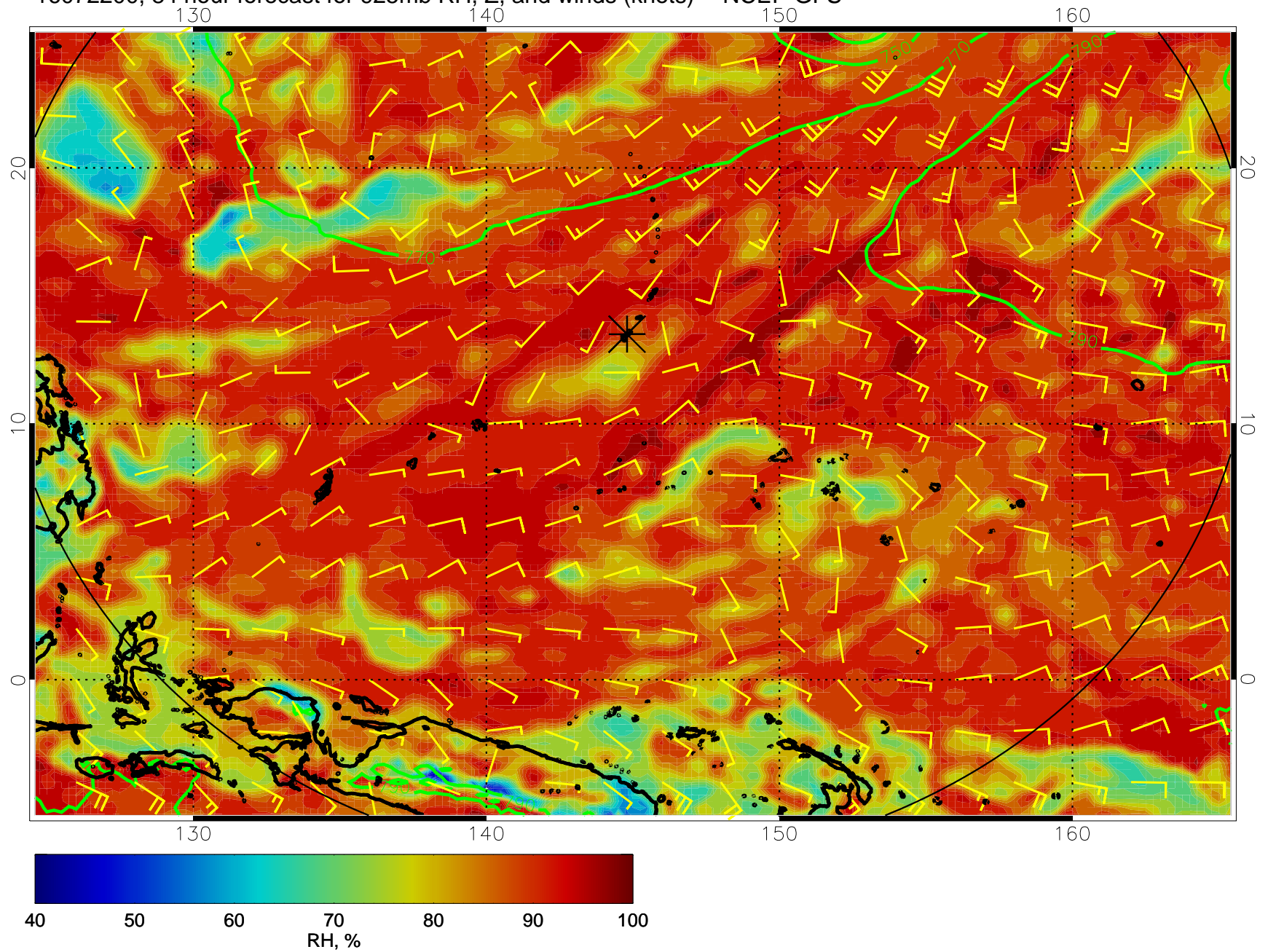
16072112, 72 hour forecast for 925mb RH, Z, and winds (knots) -- NCEP GFS



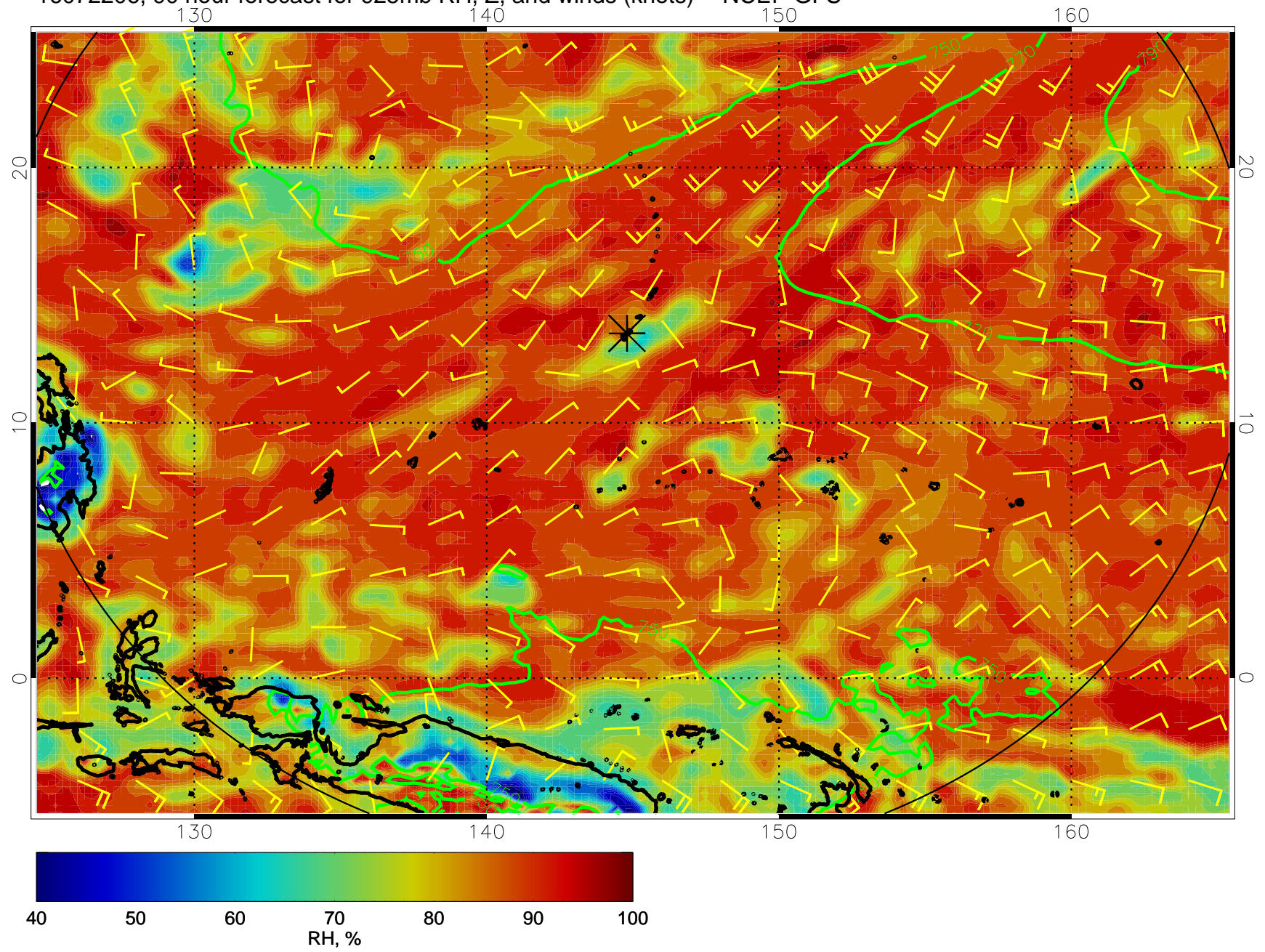
16072118, 78 hour forecast for 925mb RH, Z, and winds (knots) -- NCEP GFS



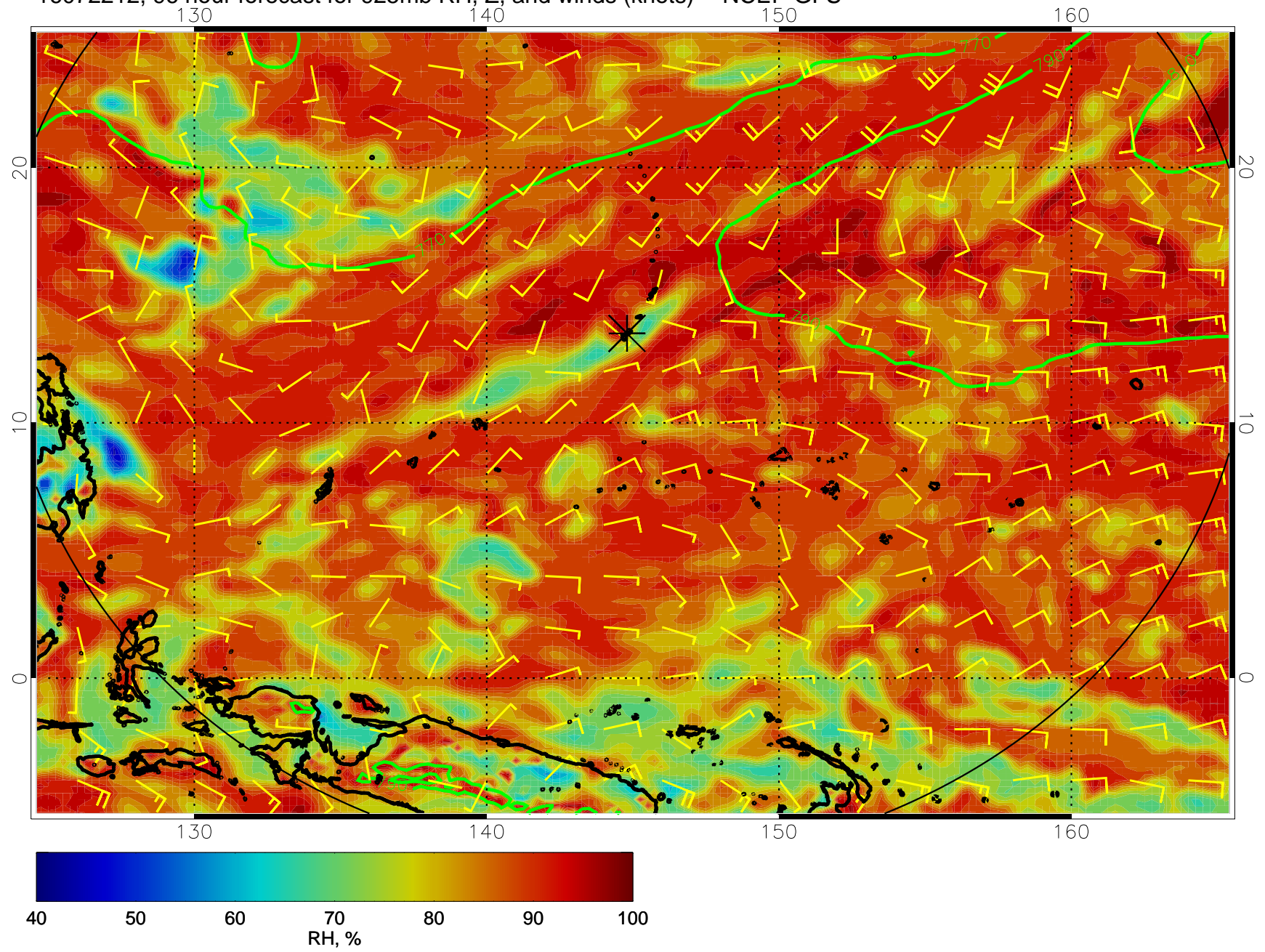
16072200, 84 hour forecast for 925mb RH, Z, and winds (knots) -- NCEP GFS



16072206, 90 hour forecast for 925mb RH, Z, and winds (knots) -- NCEP GFS

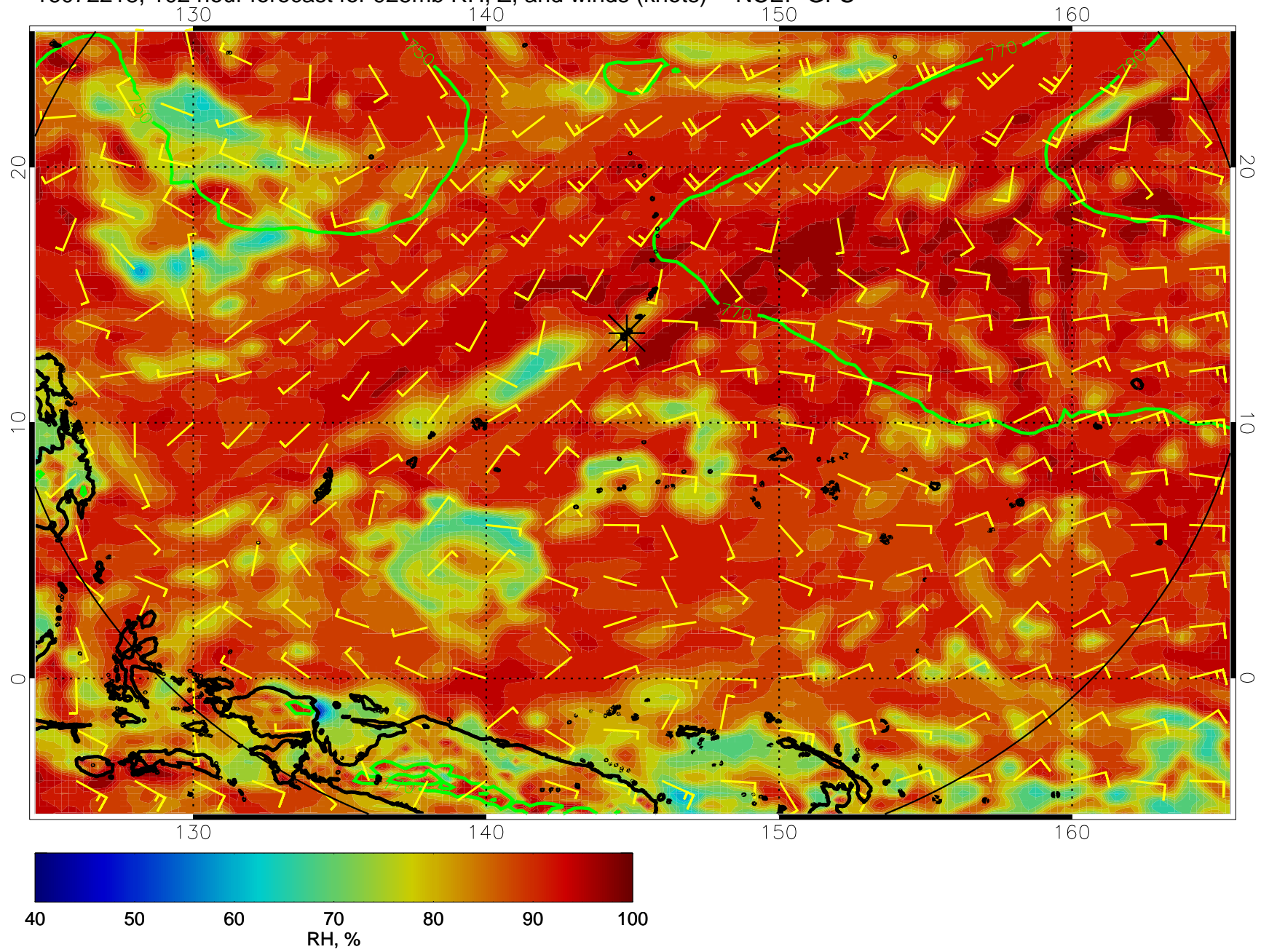


16072212, 96 hour forecast for 925mb RH, Z, and winds (knots) -- NCEP GFS

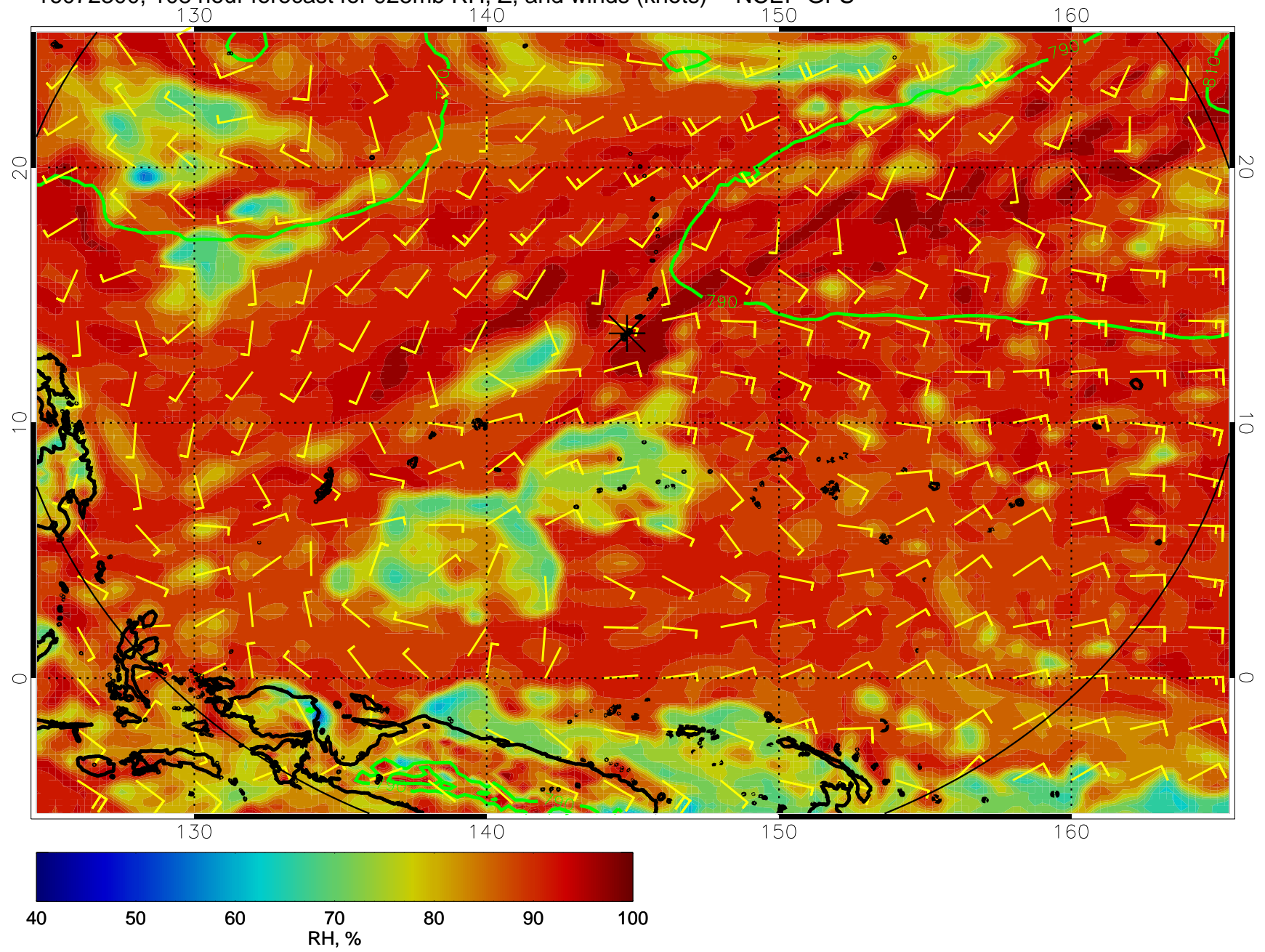




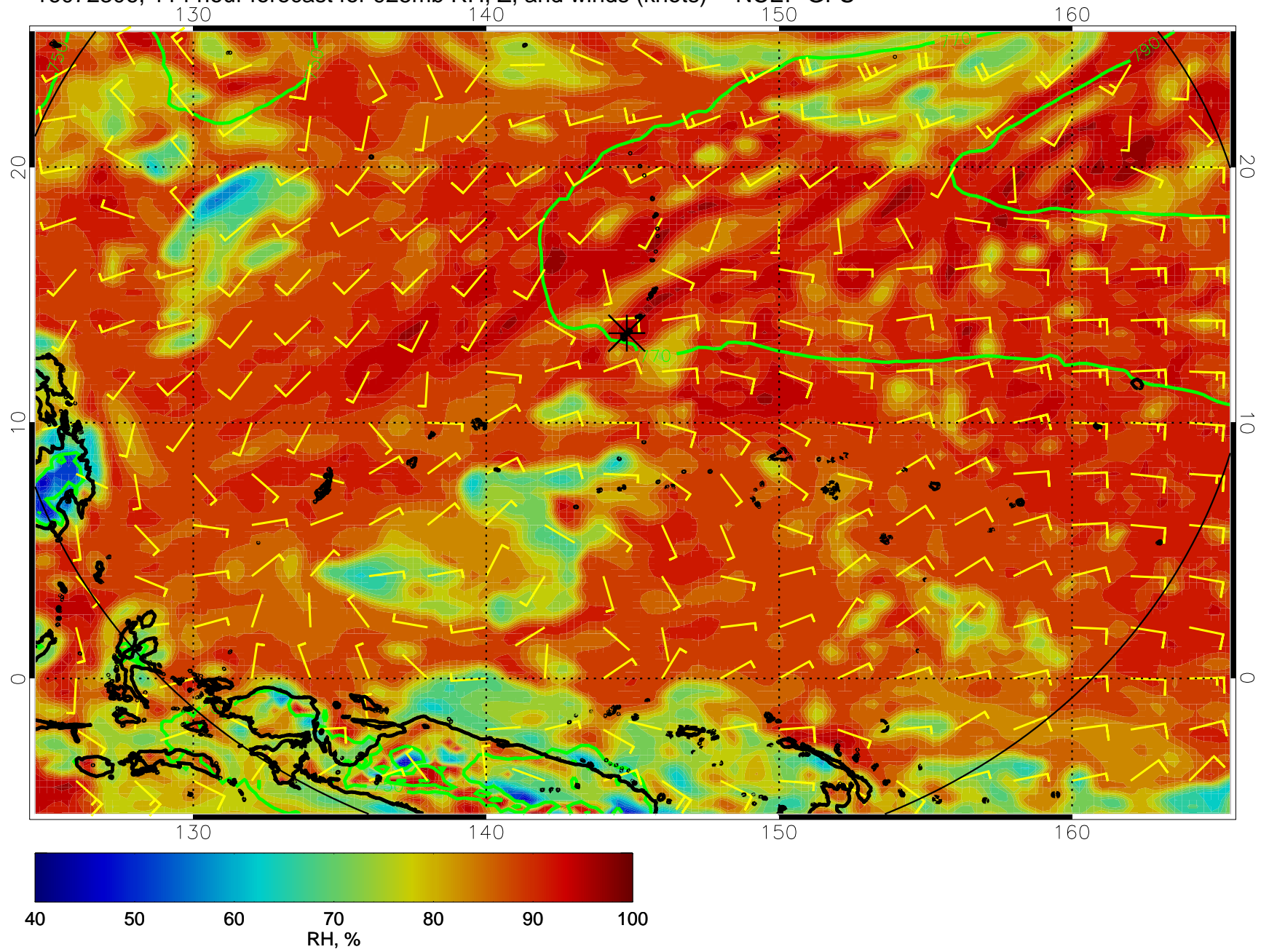
16072218, 102 hour forecast for 925mb RH, Z, and winds (knots) -- NCEP GFS



16072300, 108 hour forecast for 925mb RH, Z, and winds (knots) -- NCEP GFS



16072306, 114 hour forecast for 925mb RH, Z, and winds (knots) -- NCEP GFS



16072312, 120 hour forecast for 925mb RH, Z, and winds (knots) -- NCEP GFS

