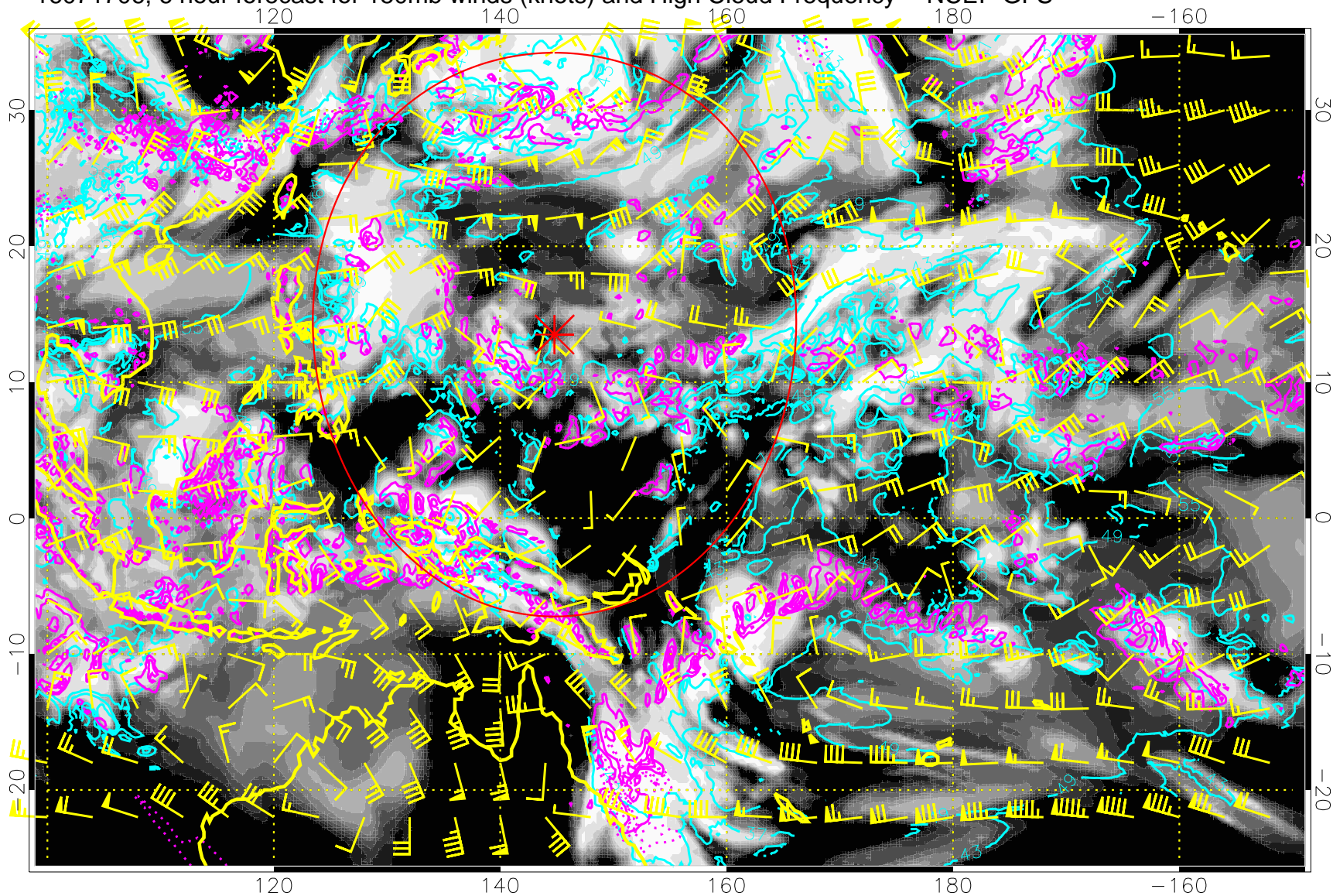


16071706, 6 hour forecast for 150mb winds (knots) and High Cloud Frequency -- NCEP GFS

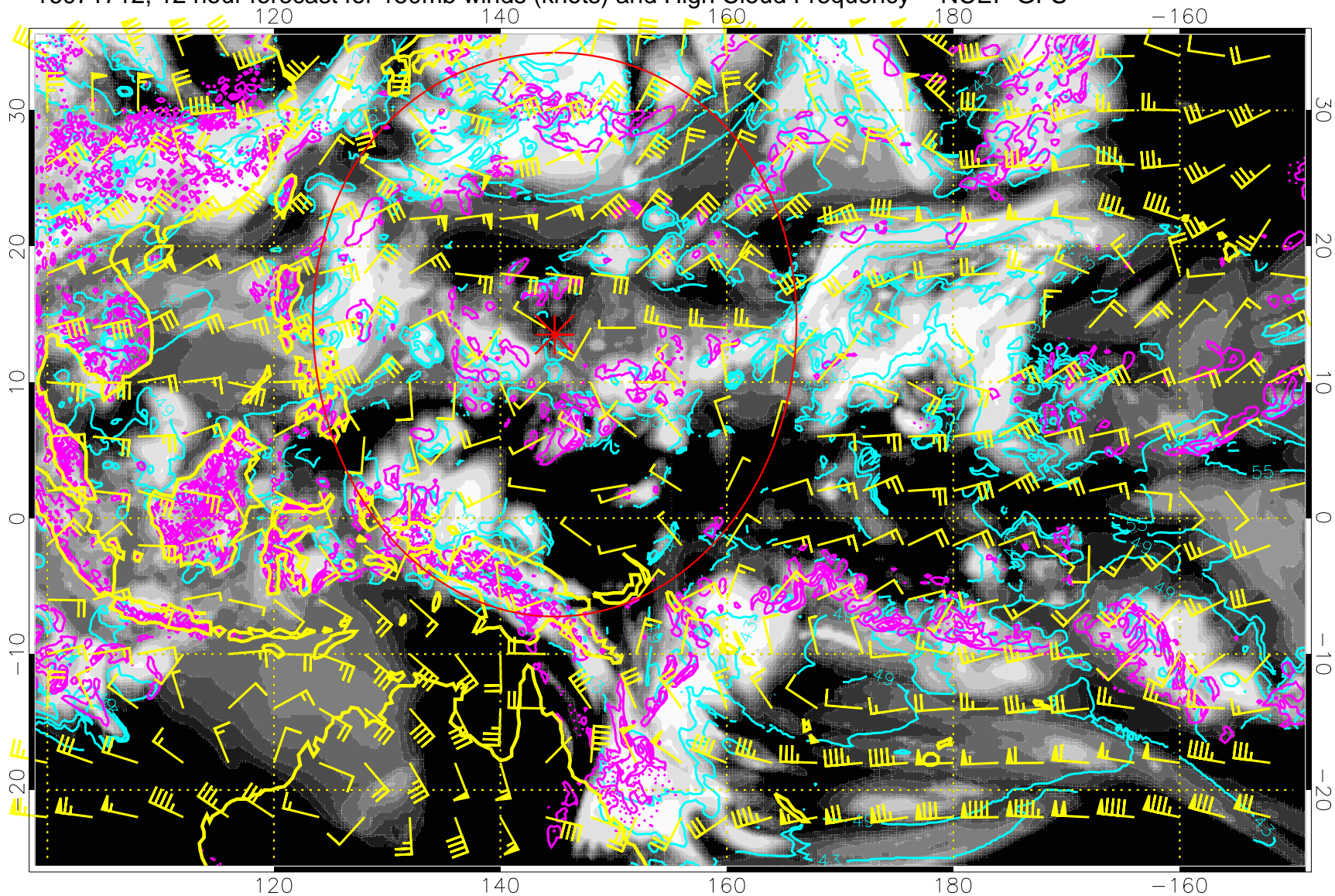


High Cloud Altitude from 37 kft at 6 kft intervals  
Precip (tot dot, conv sol) mm/day 40 mm/day contours, min 20

Range ring of 2304 km



16071712, 12 hour forecast for 150mb winds (knots) and High Cloud Frequency -- NCEP GFS

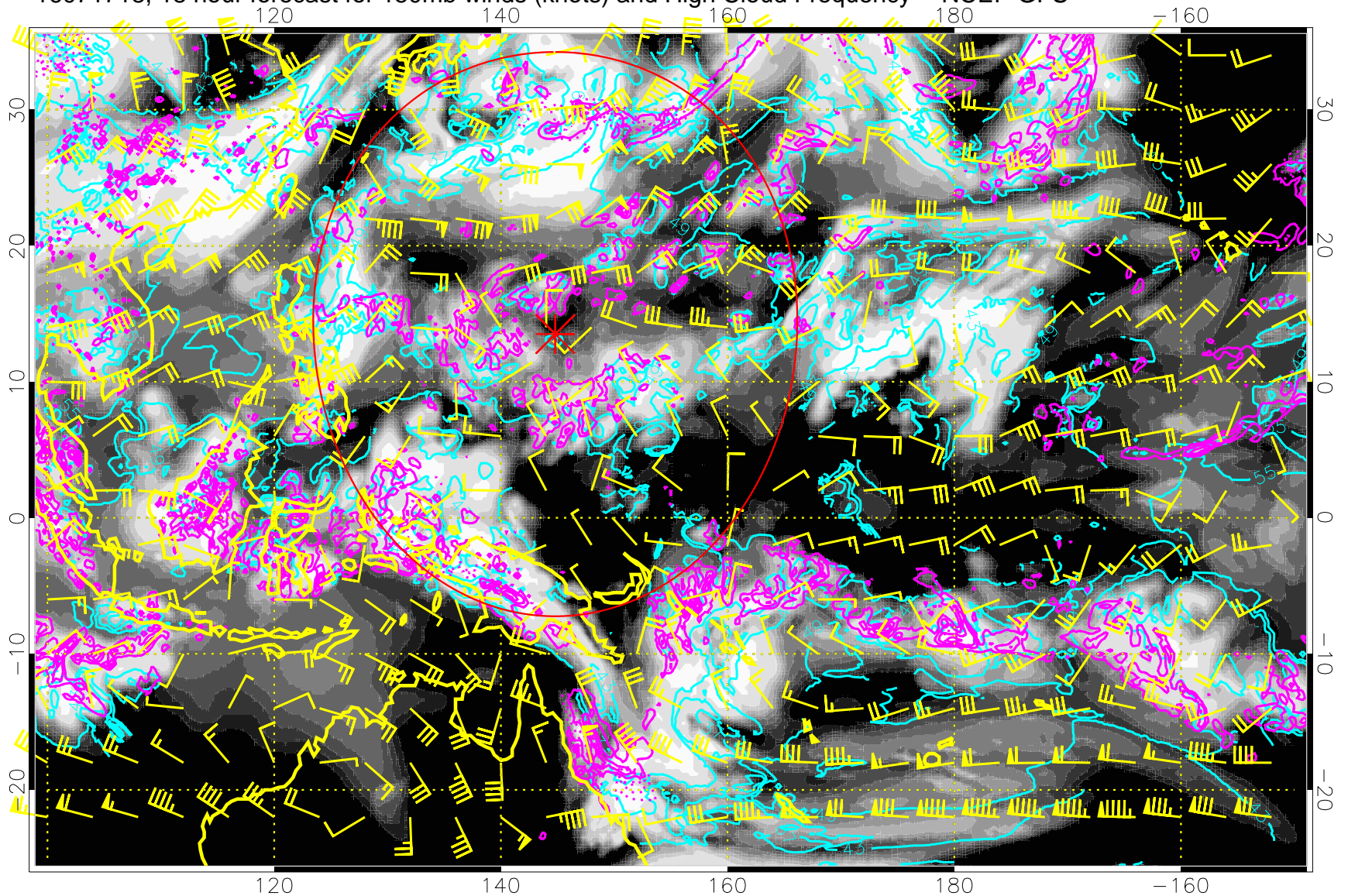


High Cloud Altitude from 37 kft at 6 kft intervals  
Precip (tot dot, conv sol) mm/day 40 mm/day contours, min 20

Range ring of 2304 km



16071718, 18 hour forecast for 150mb winds (knots) and High Cloud Frequency -- NCEP GFS

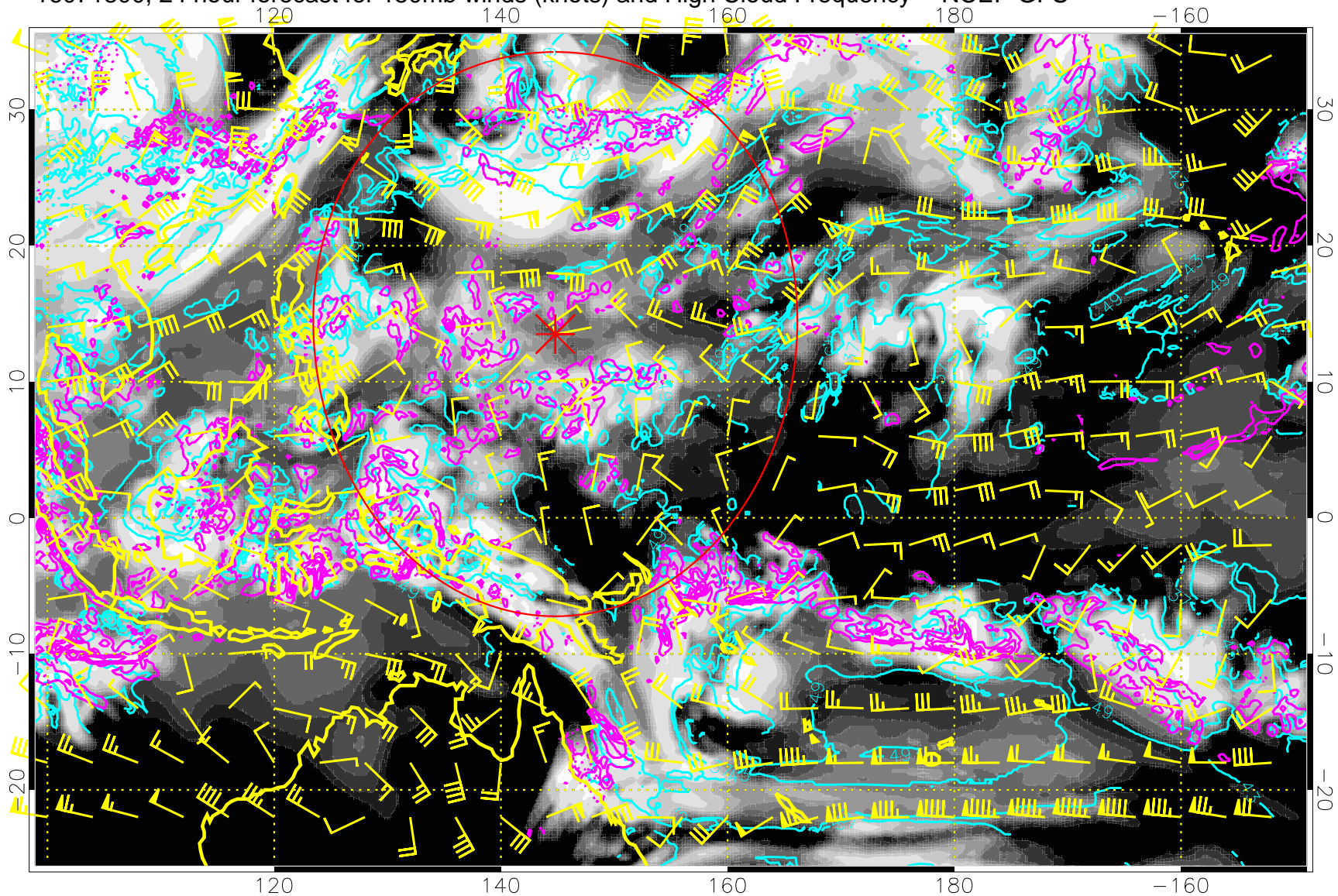


High Cloud Altitude from 37 kft at 6 kft intervals  
Precip (tot dot, conv sol) mm/day 40 mm/day contours, min 20

Range ring of 2304 km



16071800, 24 hour forecast for 150mb winds (knots) and High Cloud Frequency -- NCEP GFS

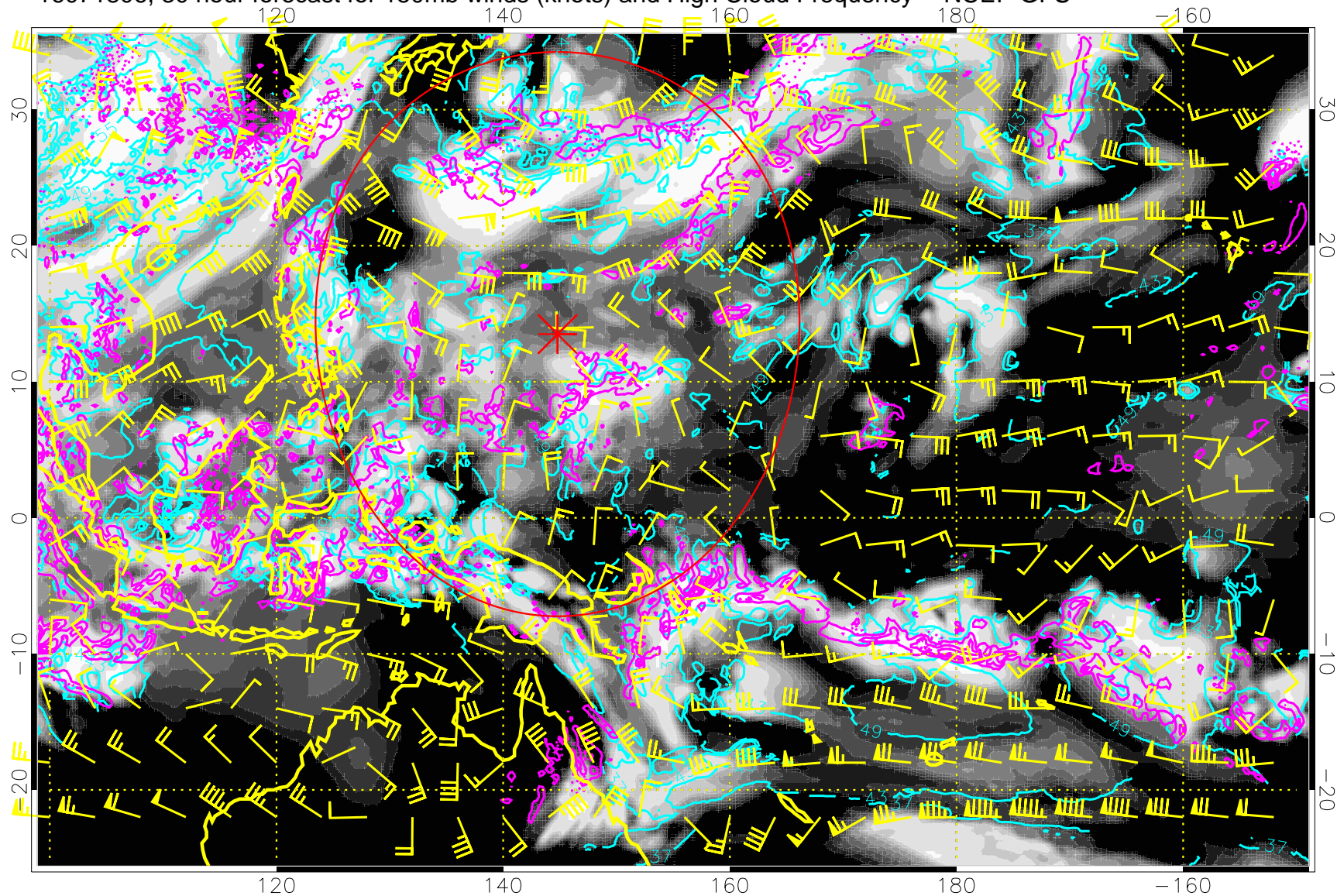


High Cloud Altitude from 37 kft at 6 kft intervals  
Precip (tot dot, conv sol) mm/day 40 mm/day contours, min 20

Range ring of 2304 km



16071806, 30 hour forecast for 150mb winds (knots) and High Cloud Frequency -- NCEP GFS

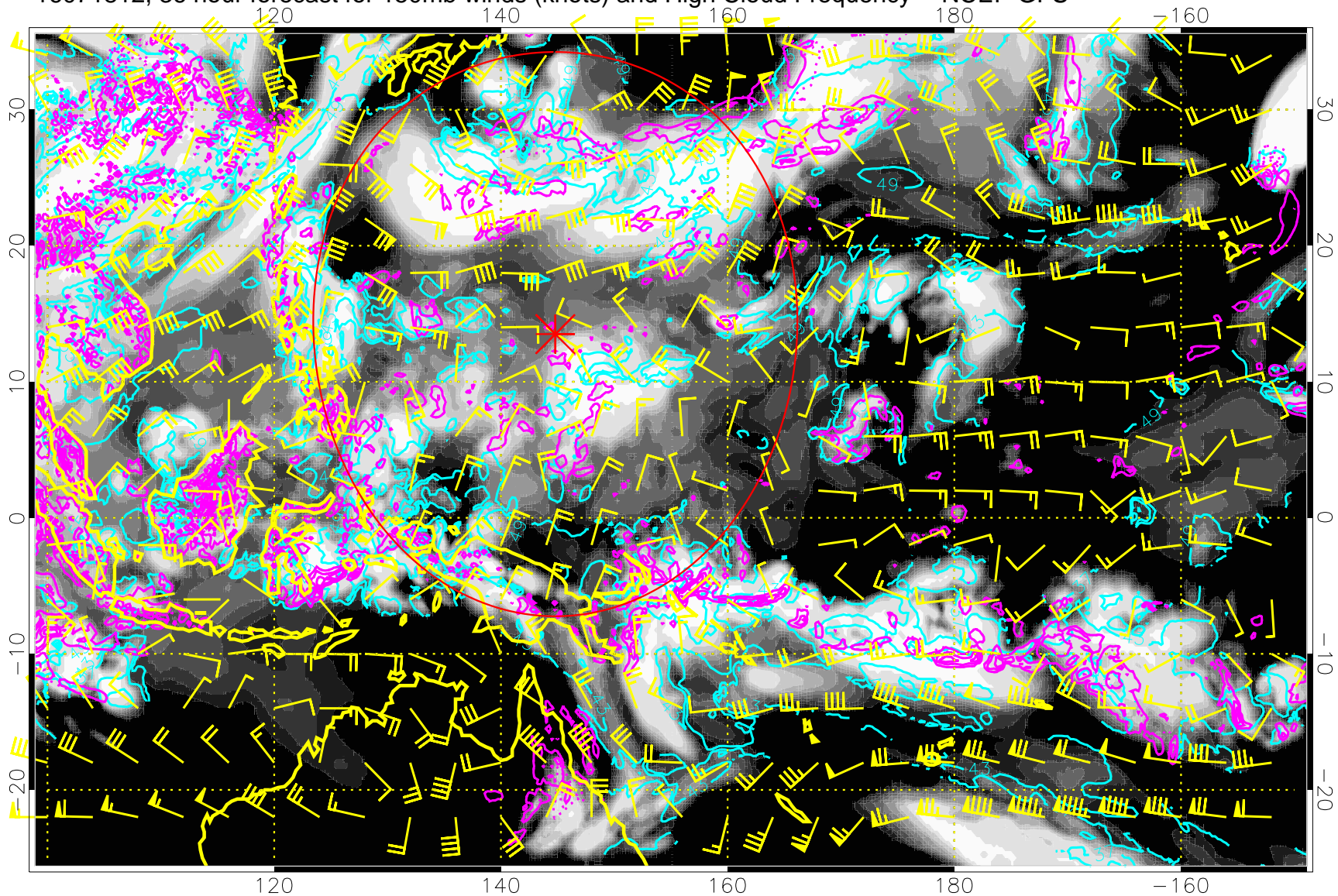


High Cloud Altitude from 37 kft at 6 kft intervals  
Precip (tot dot, conv sol) mm/day 40 mm/day contours, min 20

Range ring of 2304 km



16071812, 36 hour forecast for 150mb winds (knots) and High Cloud Frequency -- NCEP GFS

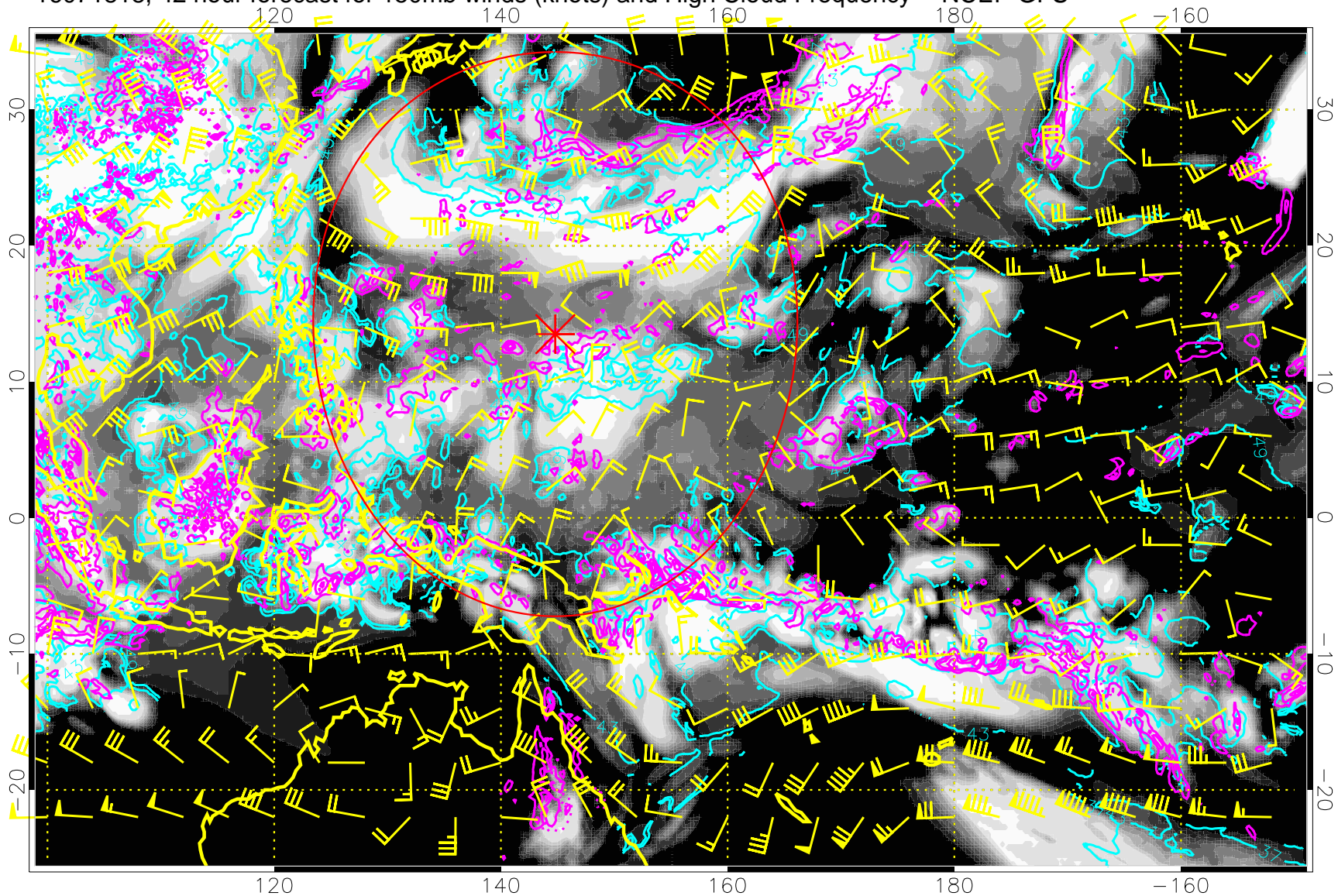


High Cloud Altitude from 37 kft at 6 kft intervals  
Precip (tot dot, conv sol) mm/day 40 mm/day contours, min 20

Range ring of 2304 km



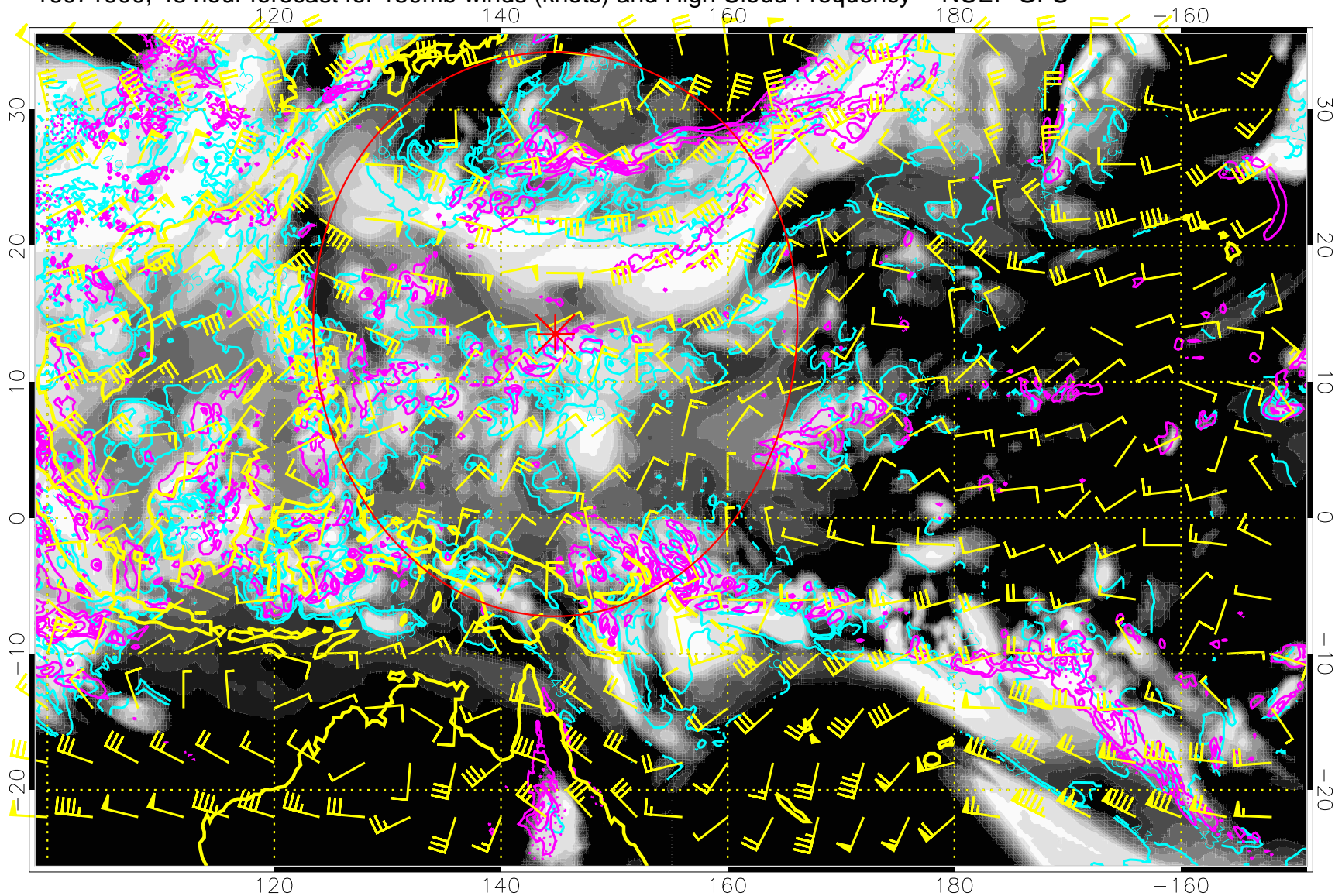
16071818, 42 hour forecast for 150mb winds (knots) and High Cloud Frequency -- NCEP GFS



High Cloud Altitude from 37 kft at 6 kft intervals  
Precip (tot dot, conv sol) mm/day 40 mm/day contours, min 20

Range ring of 2304 km

16071900, 48 hour forecast for 150mb winds (knots) and High Cloud Frequency -- NCEP GFS

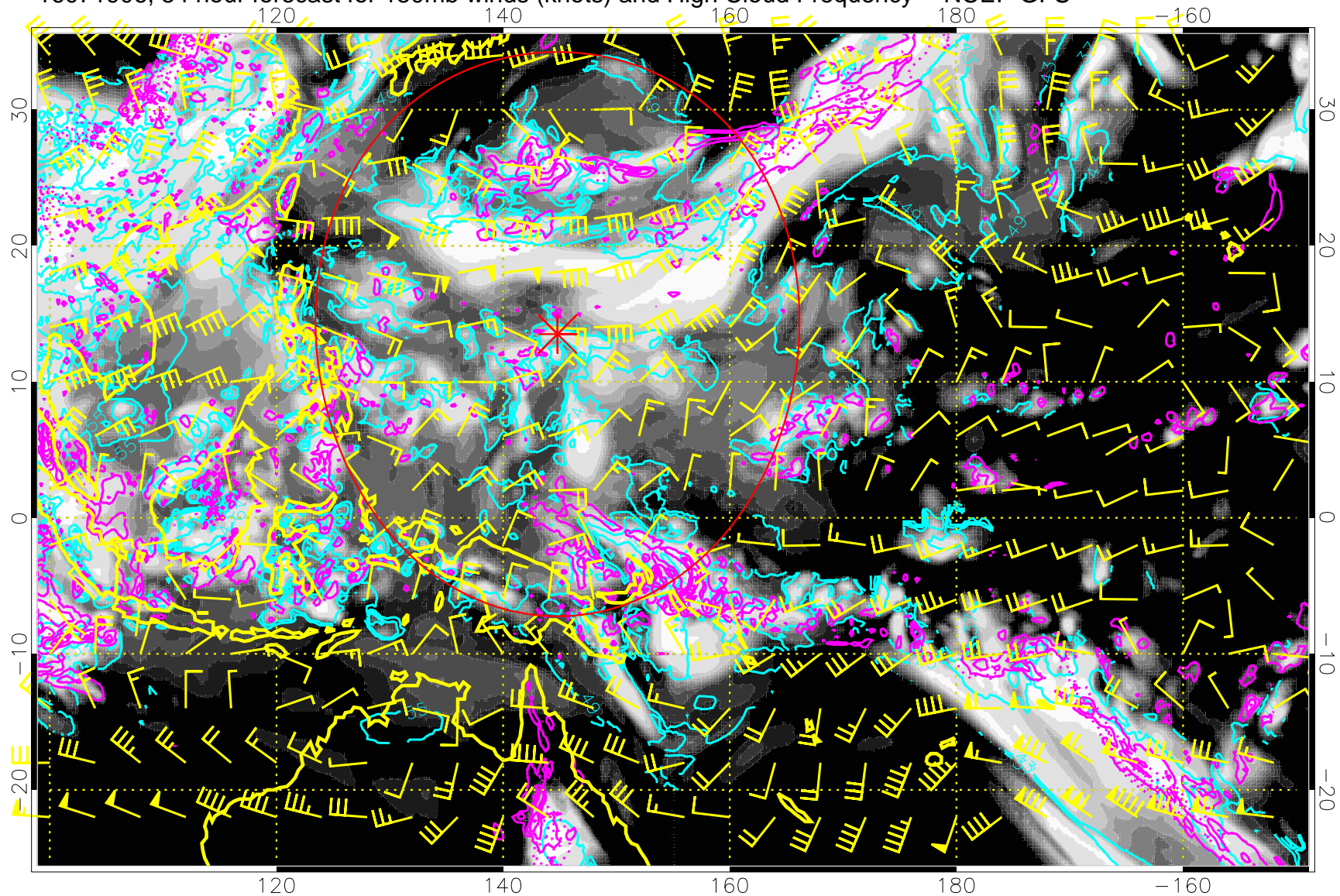


High Cloud Altitude from 37 kft at 6 kft intervals  
Precip (tot dot, conv sol) mm/day 40 mm/day contours, min 20

Range ring of 2304 km



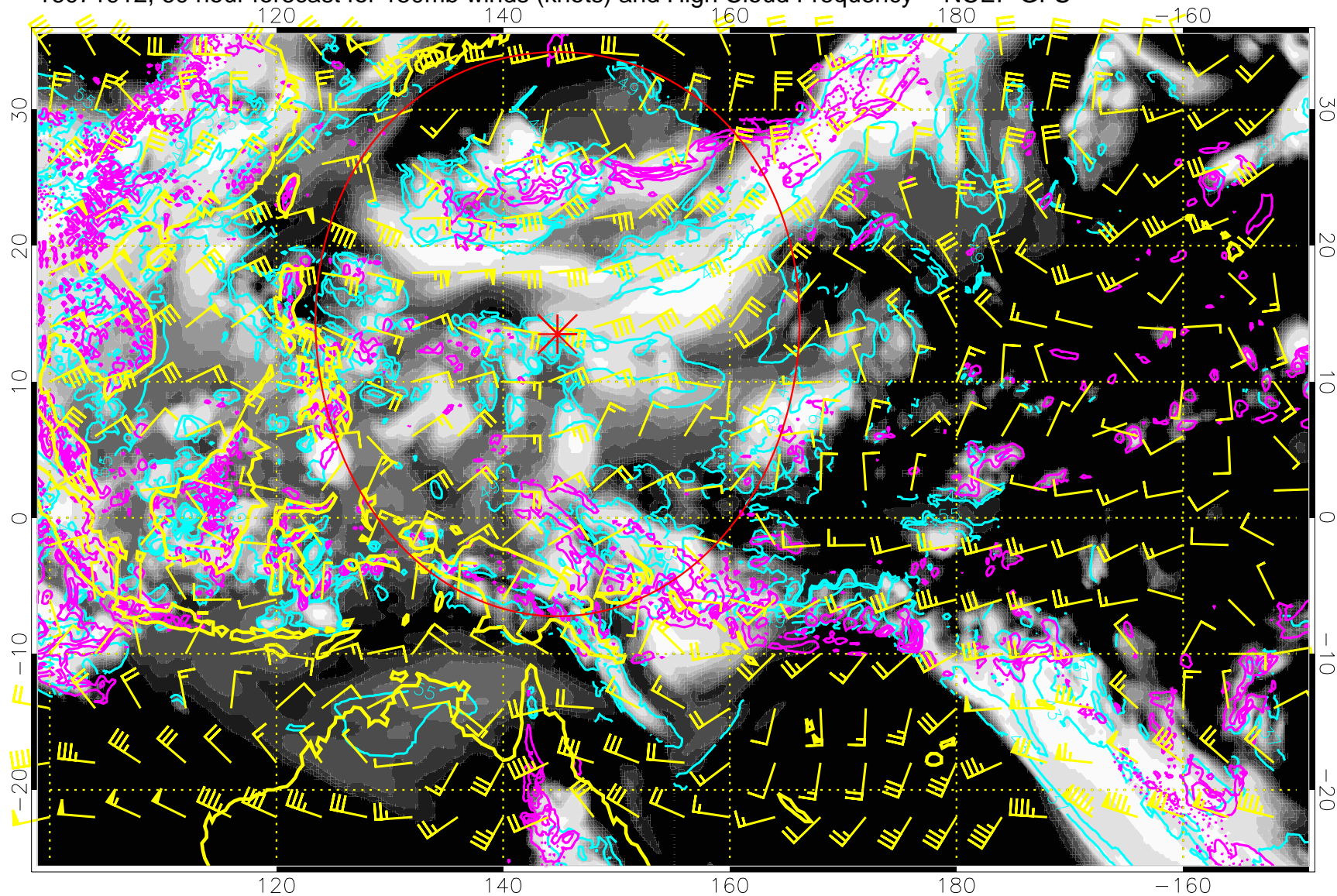
16071906, 54 hour forecast for 150mb winds (knots) and High Cloud Frequency -- NCEP GFS



High Cloud Altitude from 37 kft at 6 kft intervals  
Precip (tot dot, conv sol) mm/day 40 mm/day contours, min 20

Range ring of 2304 km

16071912, 60 hour forecast for 150mb winds (knots) and High Cloud Frequency -- NCEP GFS

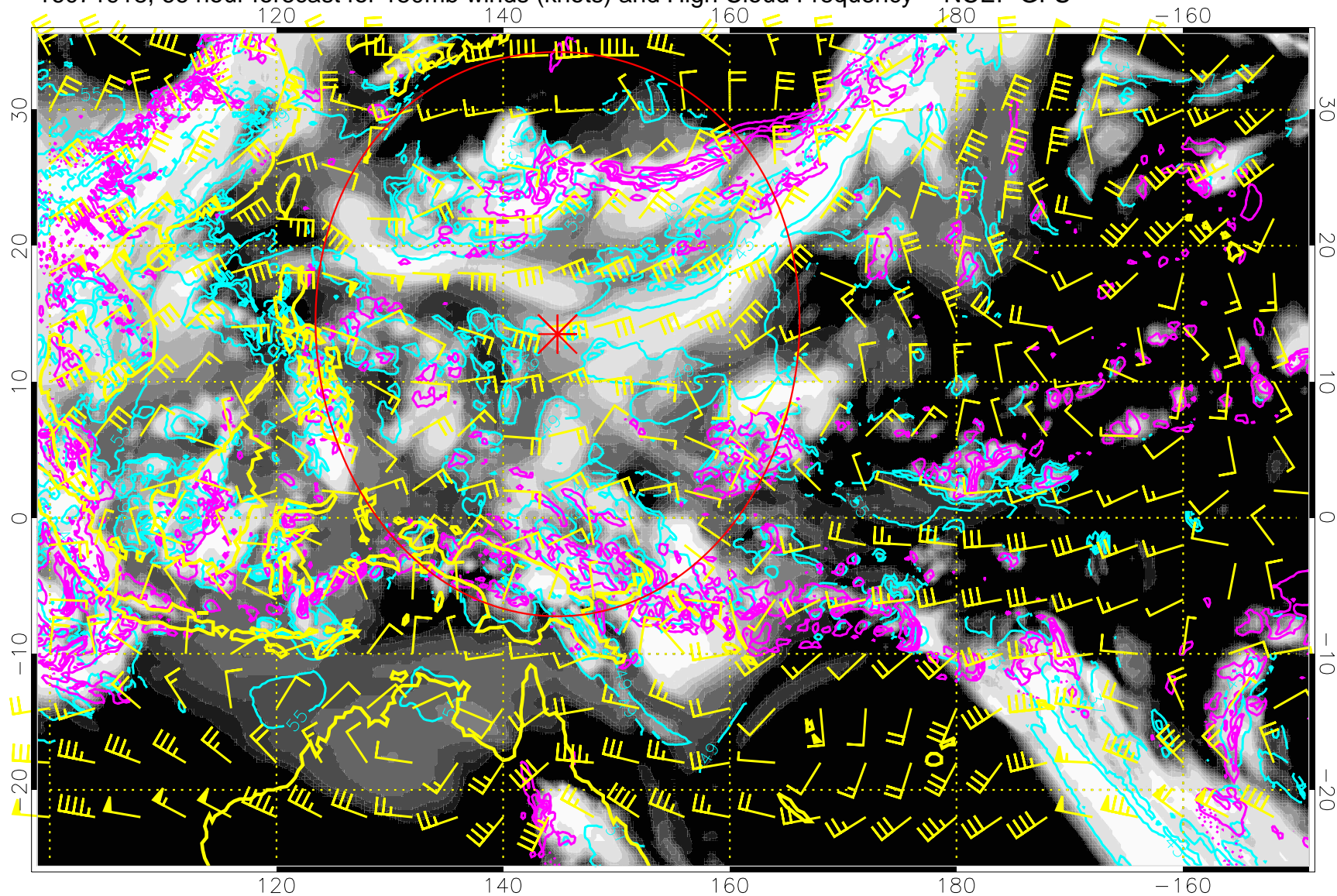


High Cloud Altitude from 37 kft at 6 kft intervals  
Precip (tot dot, conv sol) mm/day 40 mm/day contours, min 20

Range ring of 2304 km



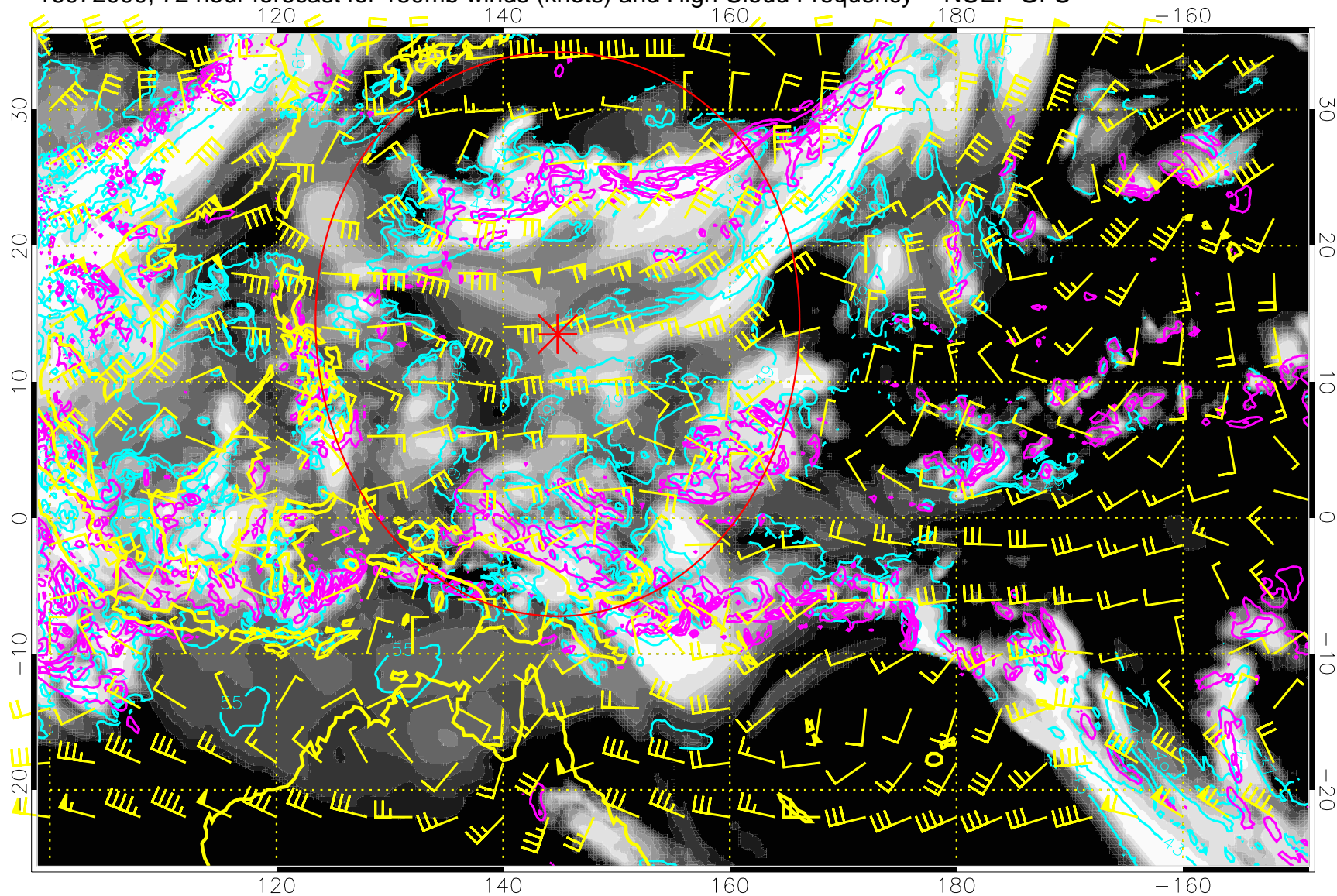
16071918, 66 hour forecast for 150mb winds (knots) and High Cloud Frequency -- NCEP GFS



High Cloud Altitude from 37 kft at 6 kft intervals  
Precip (tot dot, conv sol) mm/day 40 mm/day contours, min 20

Range ring of 2304 km

16072000, 72 hour forecast for 150mb winds (knots) and High Cloud Frequency -- NCEP GFS

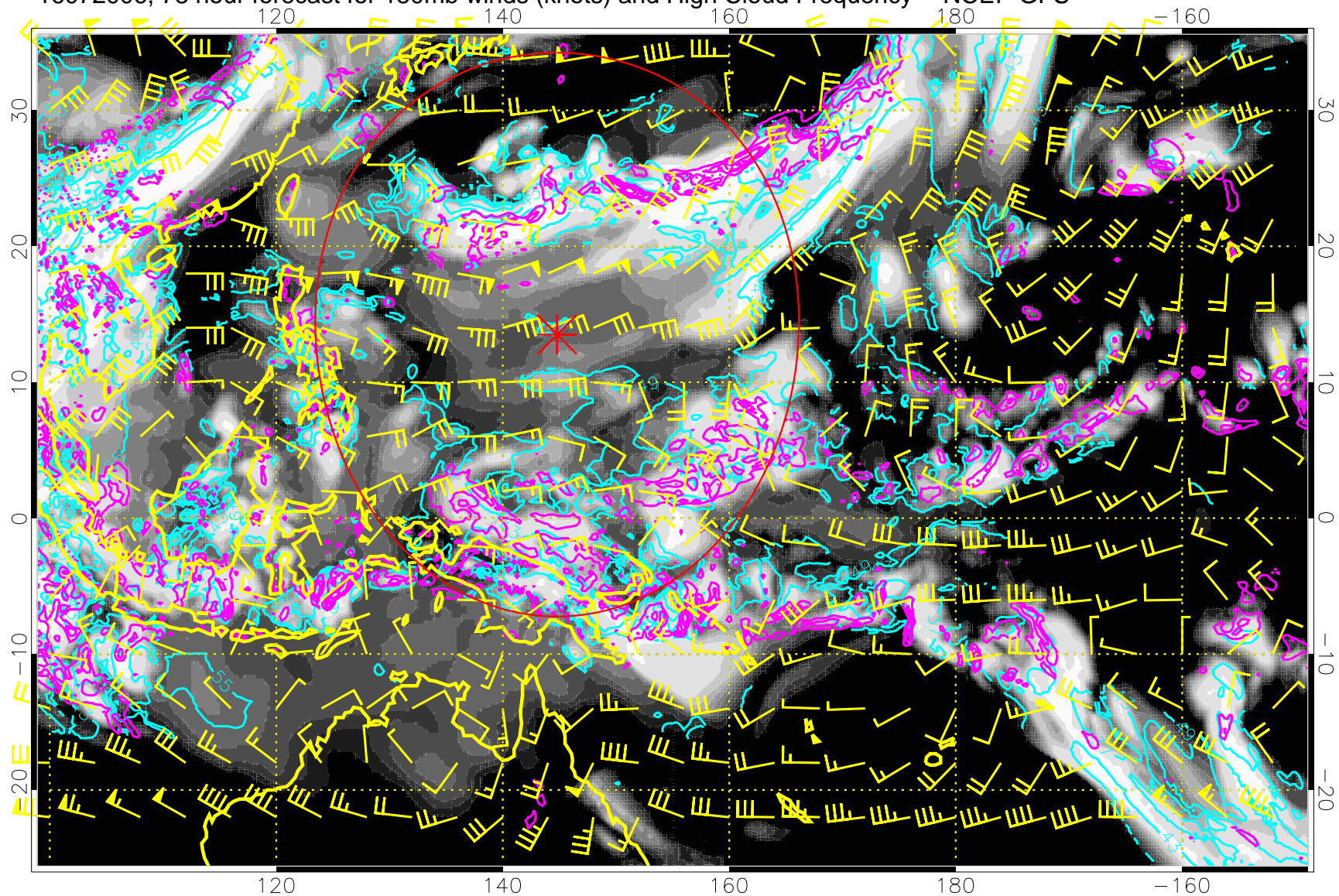


High Cloud Altitude from 37 kft at 6 kft intervals  
Precip (tot dot, conv sol) mm/day 40 mm/day contours, min 20

Range ring of 2304 km



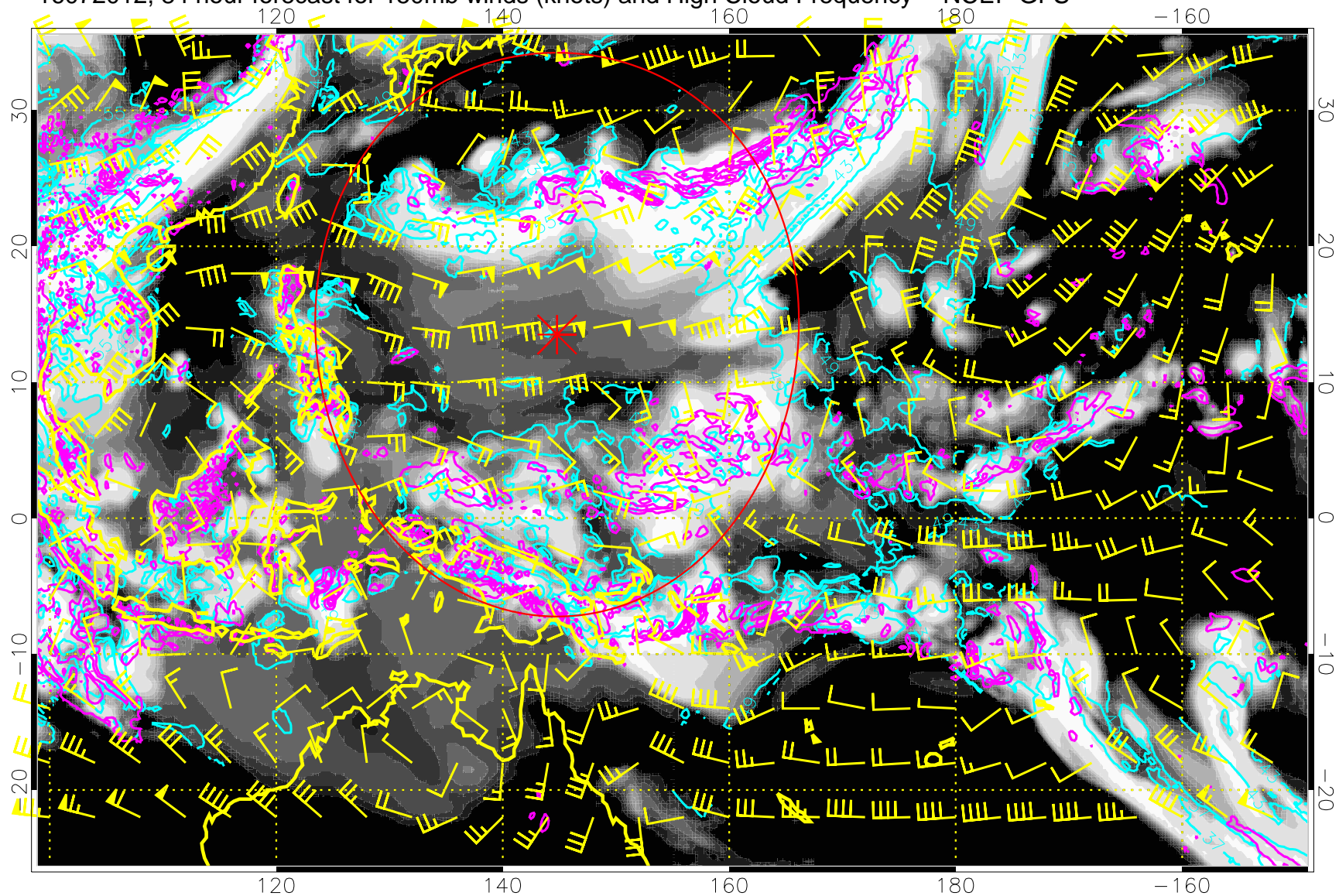
16072006, 78 hour forecast for 150mb winds (knots) and High Cloud Frequency -- NCEP GFS



High Cloud Altitude from 37 kft at 6 kft intervals  
Precip (tot dot, conv sol) mm/day 40 mm/day contours, min 20

Range ring of 2304 km

16072012, 84 hour forecast for 150mb winds (knots) and High Cloud Frequency -- NCEP GFS

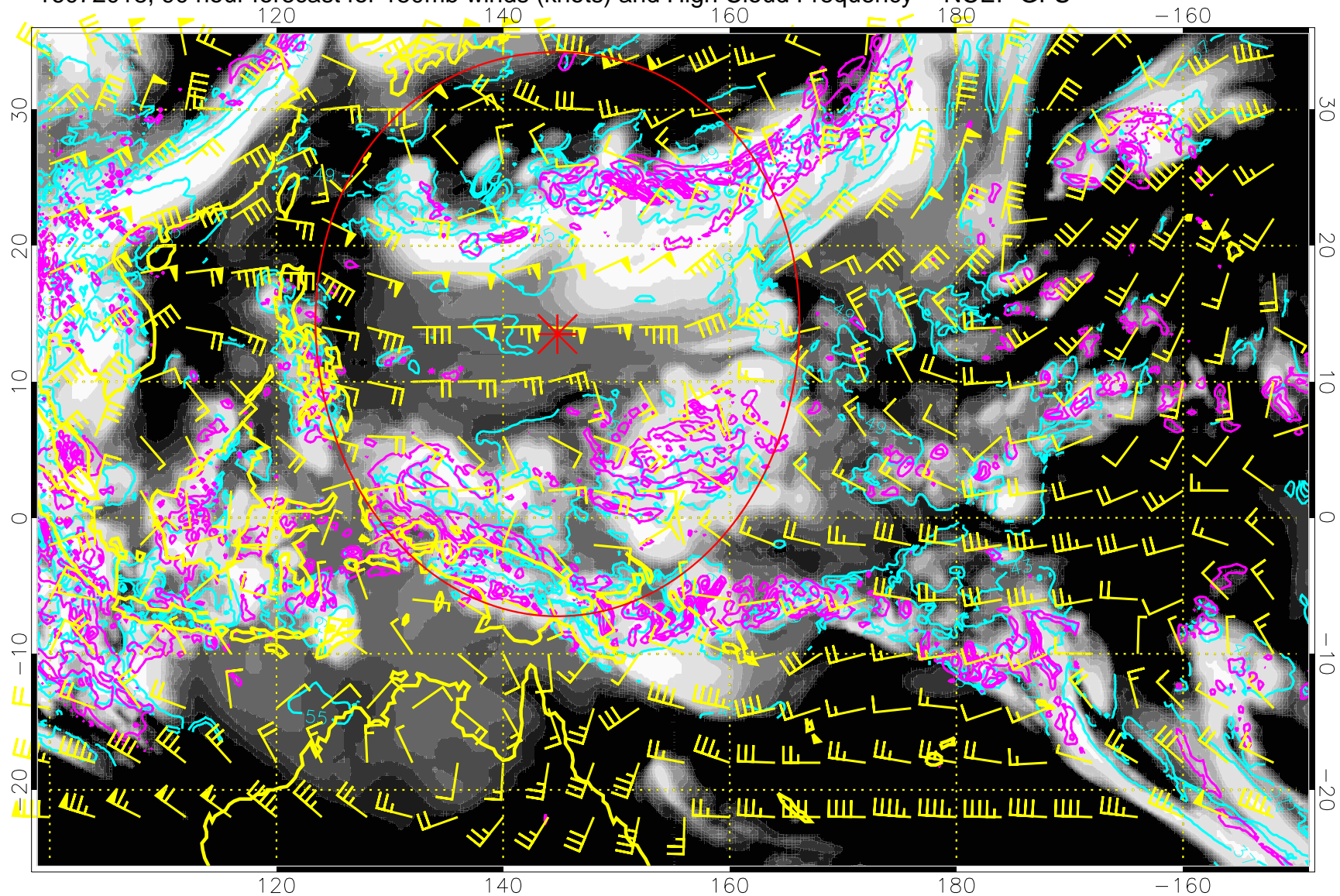


High Cloud Altitude from 37 kft at 6 kft intervals  
Precip (tot dot, conv sol) mm/day 40 mm/day contours, min 20

Range ring of 2304 km



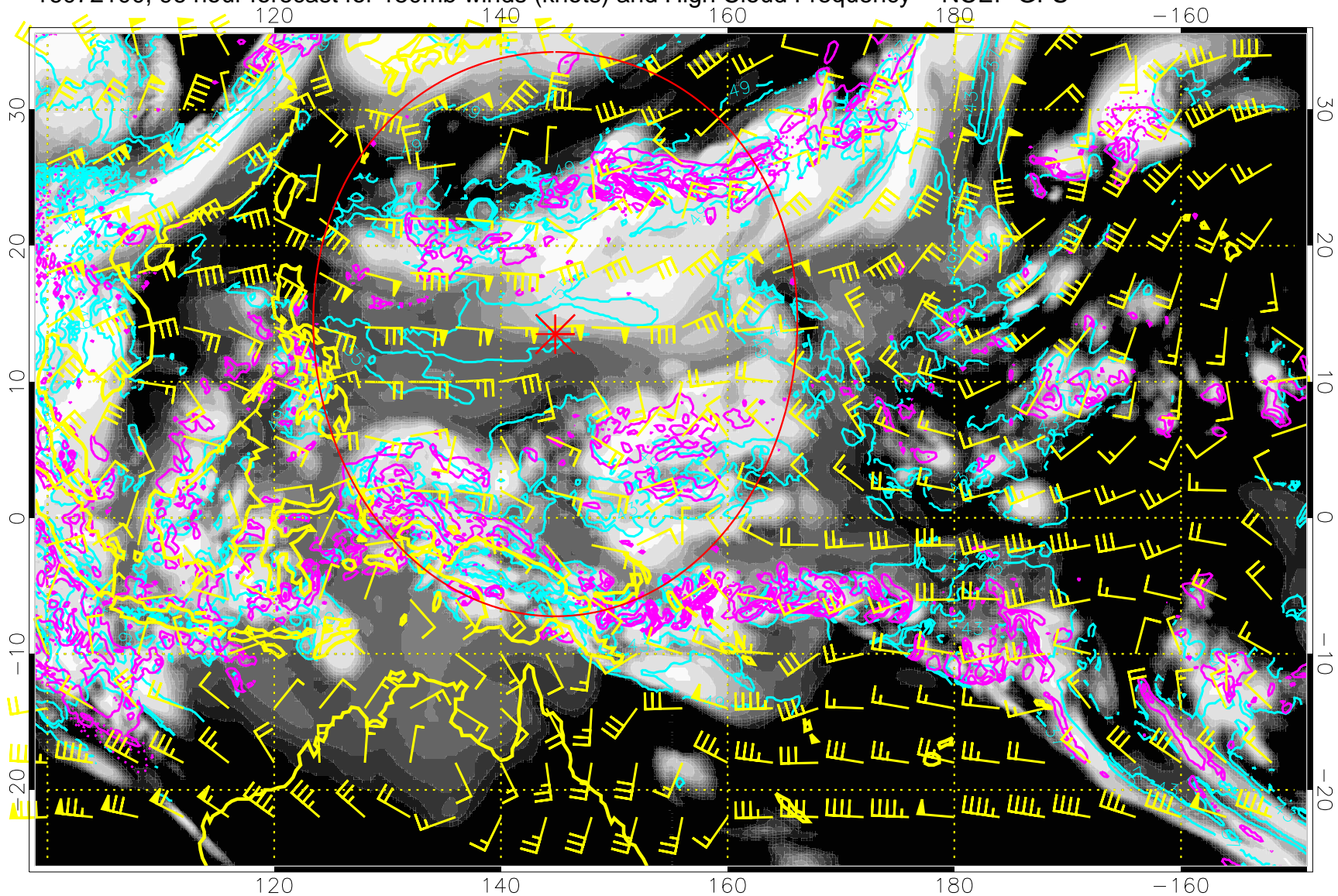
16072018, 90 hour forecast for 150mb winds (knots) and High Cloud Frequency -- NCEP GFS



High Cloud Altitude from 37 kft at 6 kft intervals  
Precip (tot dot, conv sol) mm/day 40 mm/day contours, min 20

Range ring of 2304 km

16072100, 96 hour forecast for 150mb winds (knots) and High Cloud Frequency -- NCEP GFS

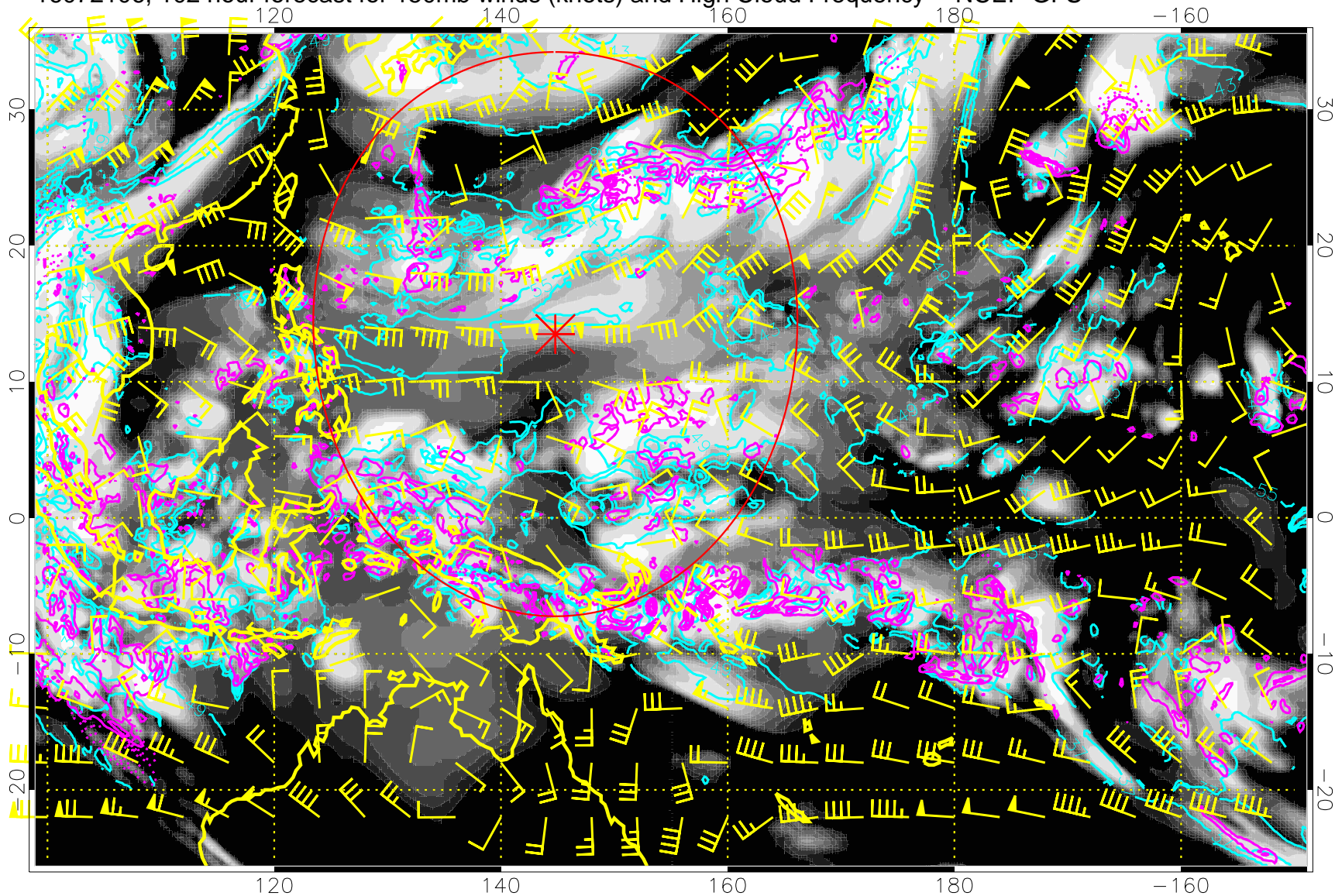


High Cloud Altitude from 37 kft at 6 kft intervals  
Precip (tot dot, conv sol) mm/day 40 mm/day contours, min 20

Range ring of 2304 km



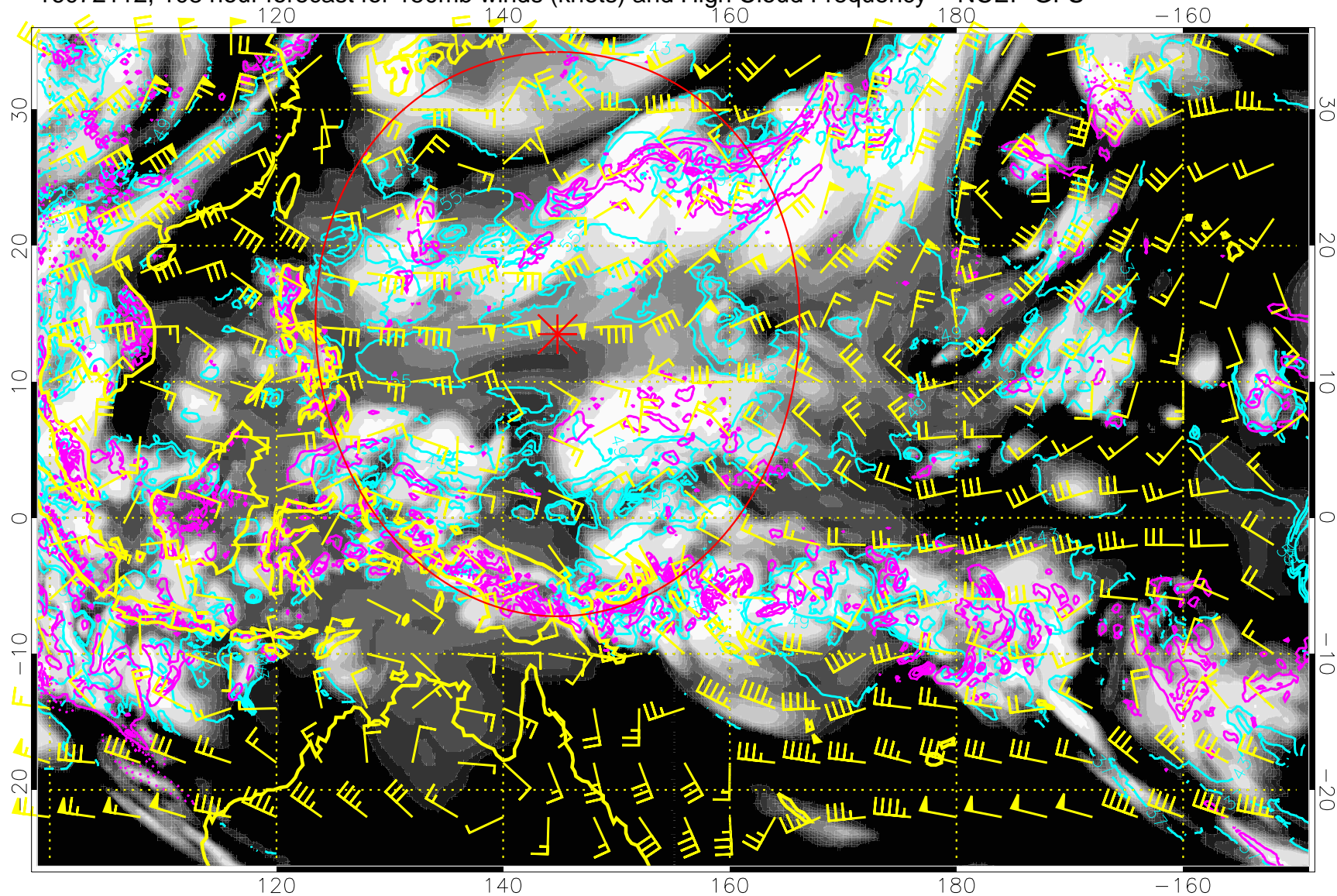
16072106, 102 hour forecast for 150mb winds (knots) and High Cloud Frequency -- NCEP GFS



High Cloud Altitude from 37 kft at 6 kft intervals  
Precip (tot dot, conv sol) mm/day 40 mm/day contours, min 20

Range ring of 2304 km

16072112, 108 hour forecast for 150mb winds (knots) and High Cloud Frequency -- NCEP GFS

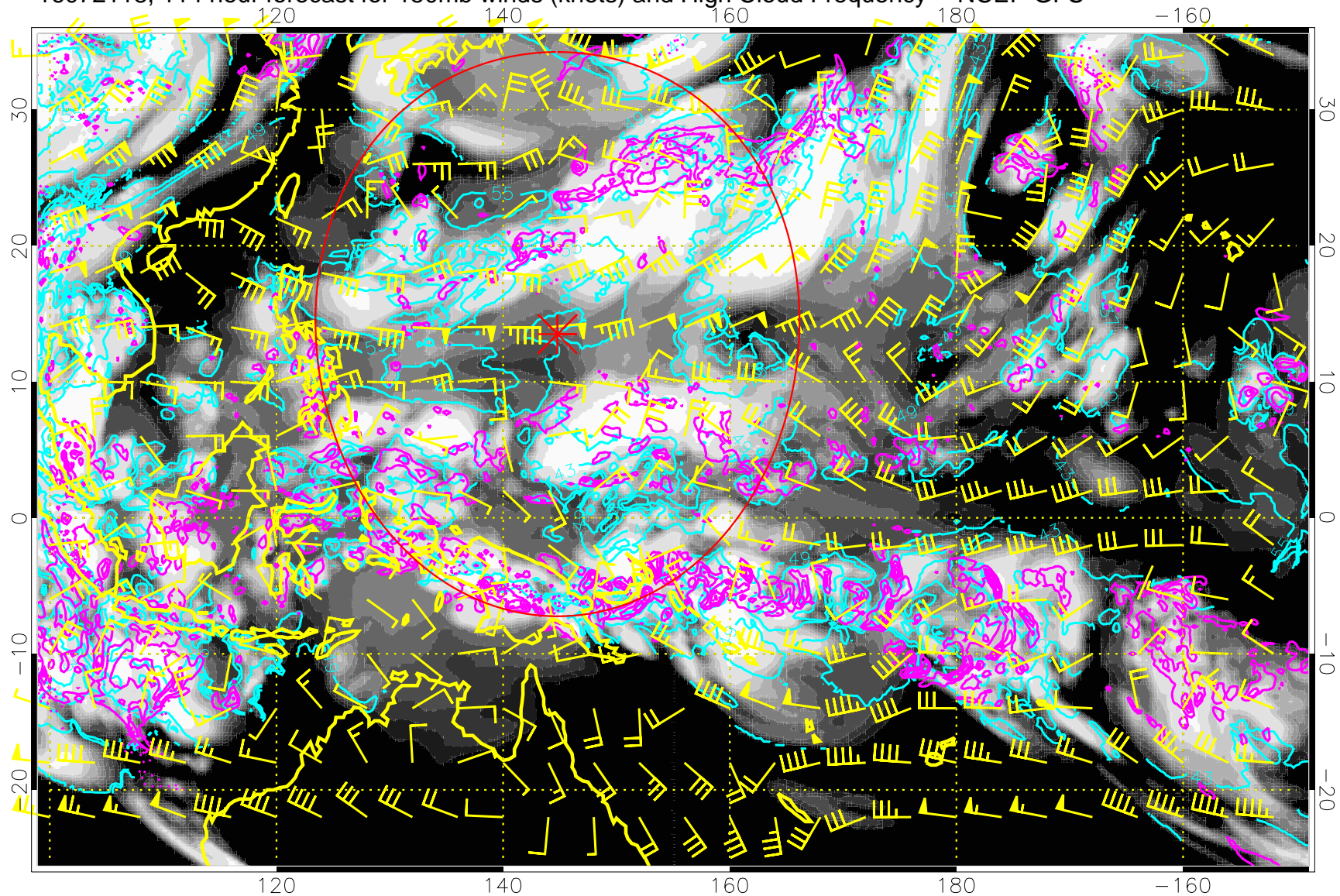


High Cloud Altitude from 37 kft at 6 kft intervals  
Precip (tot dot, conv sol) mm/day 40 mm/day contours, min 20

Range ring of 2304 km



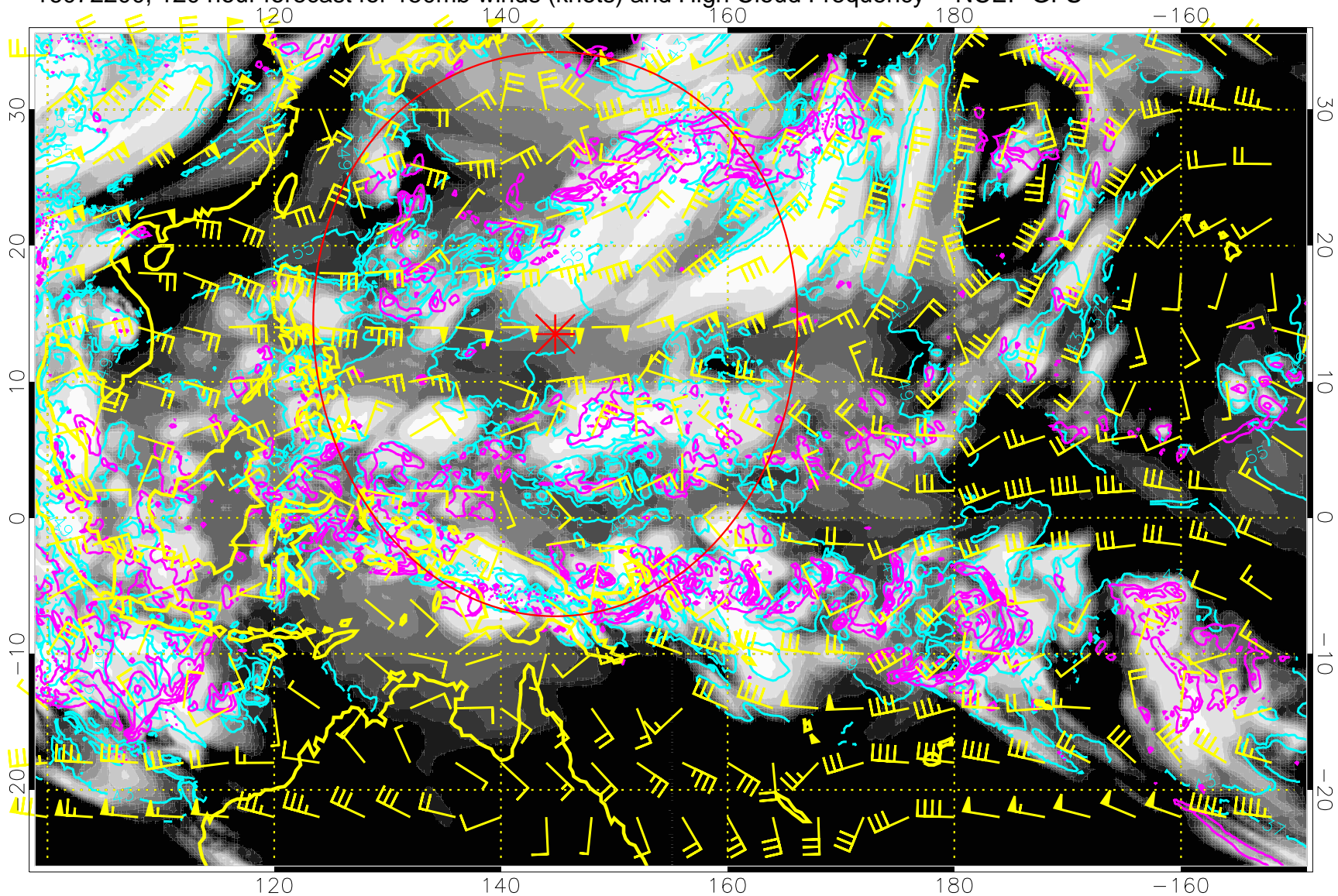
16072118, 114 hour forecast for 150mb winds (knots) and High Cloud Frequency -- NCEP GFS



High Cloud Altitude from 37 kft at 6 kft intervals  
Precip (tot dot, conv sol) mm/day 40 mm/day contours, min 20

Range ring of 2304 km

16072200, 120 hour forecast for 150mb winds (knots) and High Cloud Frequency -- NCEP GFS



High Cloud Altitude from 37 kft at 6 kft intervals  
Precip (tot dot, conv sol) mm/day 40 mm/day contours, min 20

Range ring of 2304 km