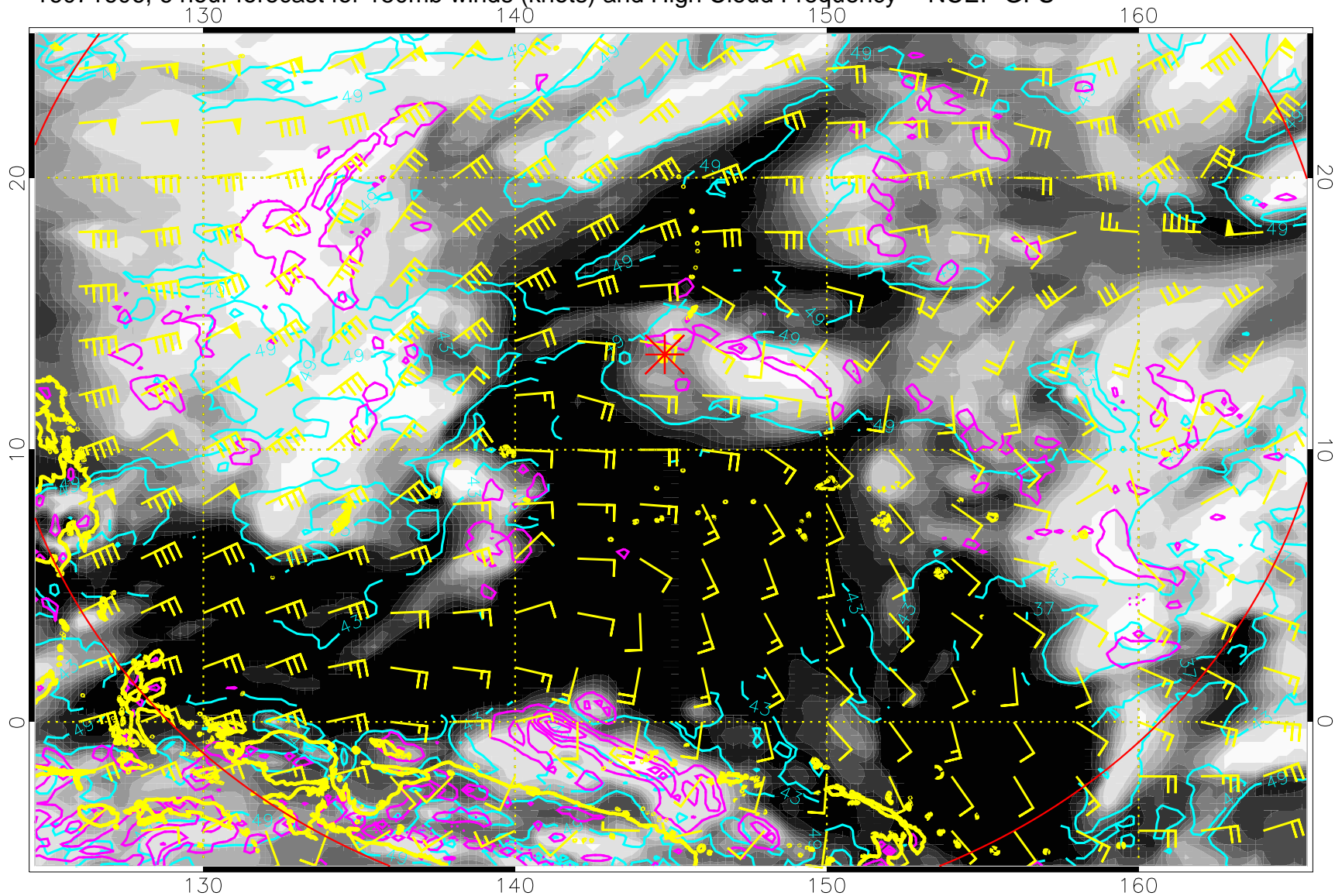
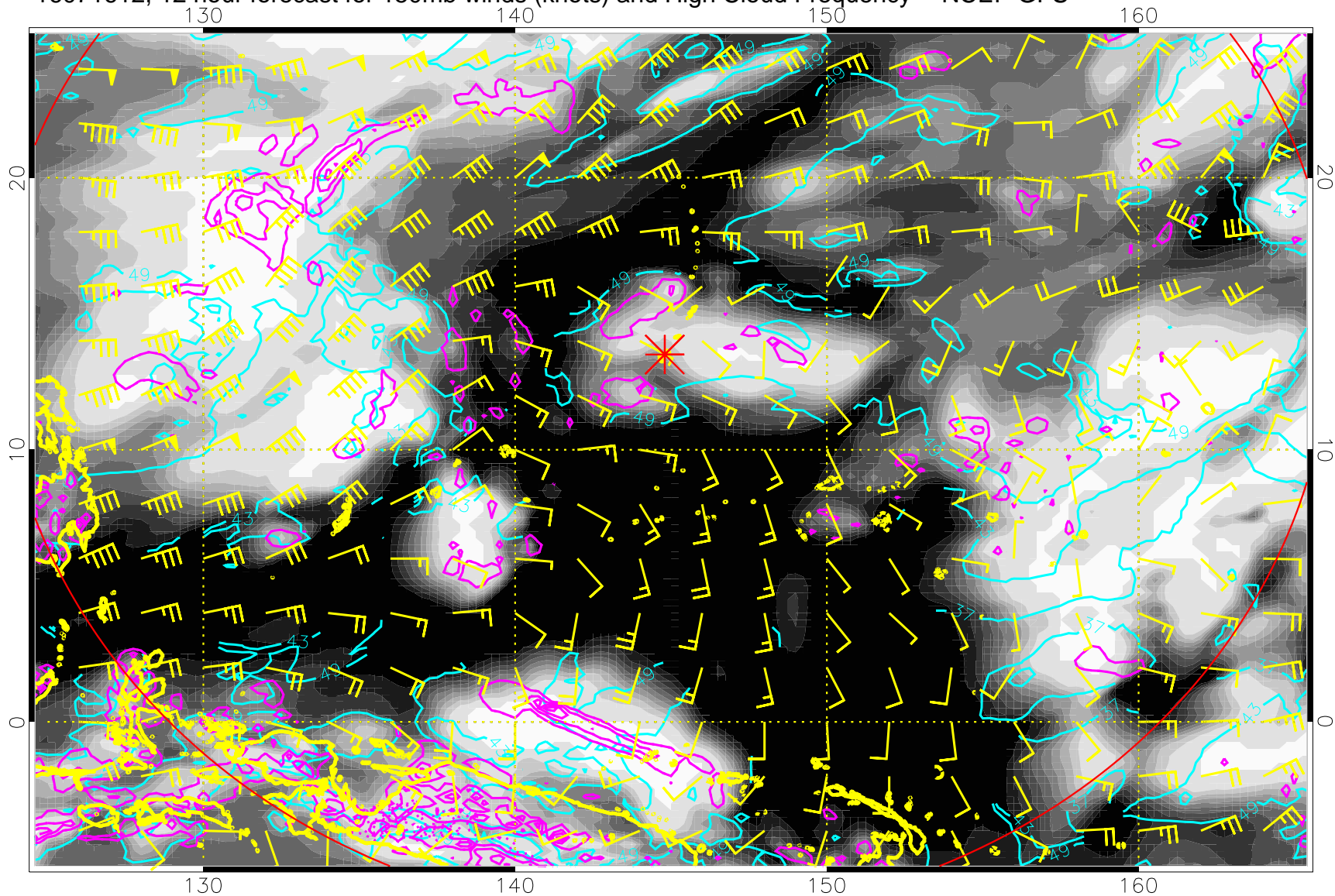


16071606, 6 hour forecast for 150mb winds (knots) and High Cloud Frequency -- NCEP GFS

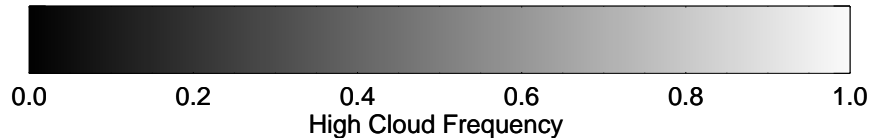


High Cloud Altitude from 37 kft at 6 kft intervals  
Precip (tot dot, conv sol) mm/day 40 mm/day contours, min 20

16071612, 12 hour forecast for 150mb winds (knots) and High Cloud Frequency -- NCEP GFS

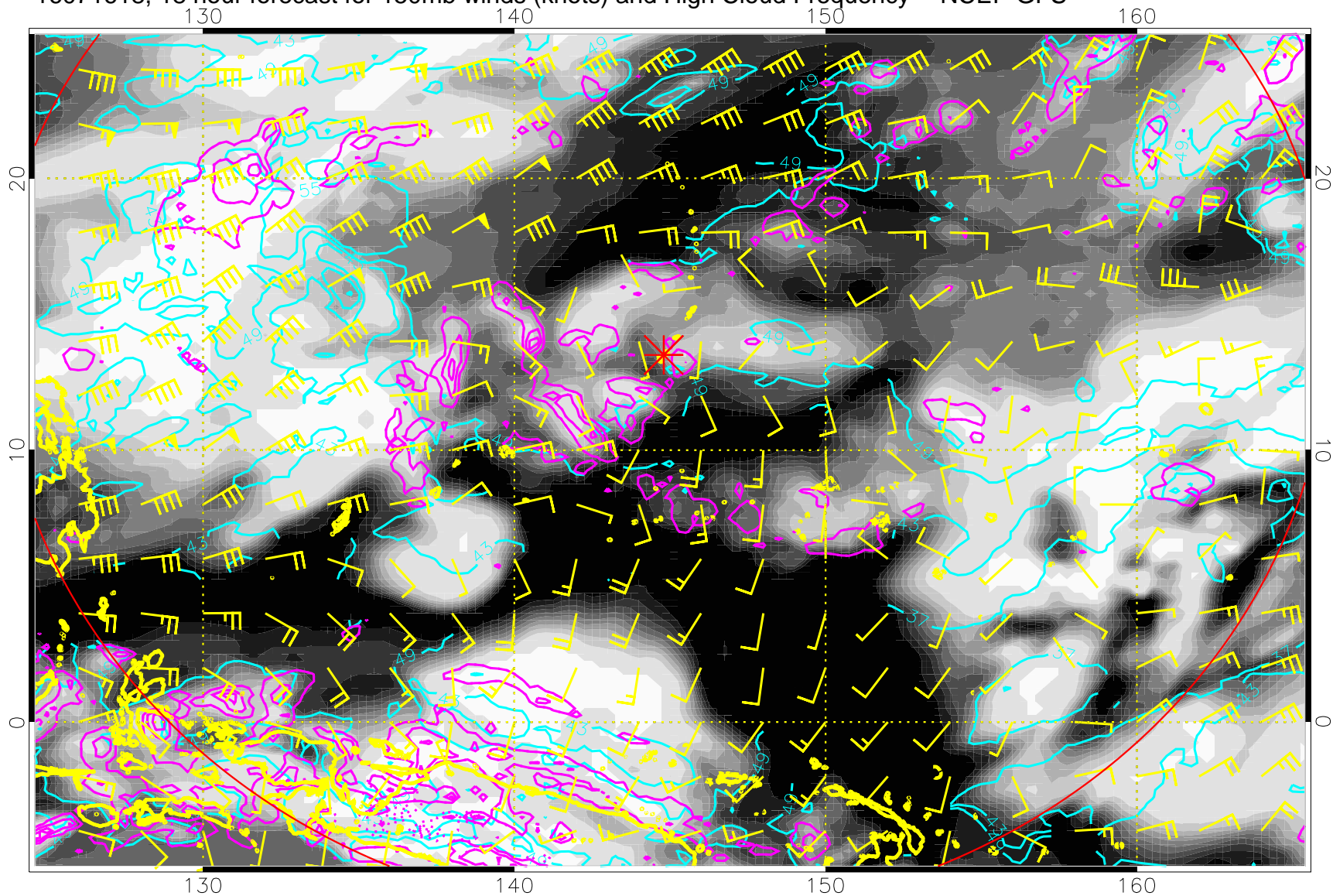


High Cloud Altitude from 37 kft at 6 kft intervals  
Precip (tot dot, conv sol) mm/day 40 mm/day contours, min 20



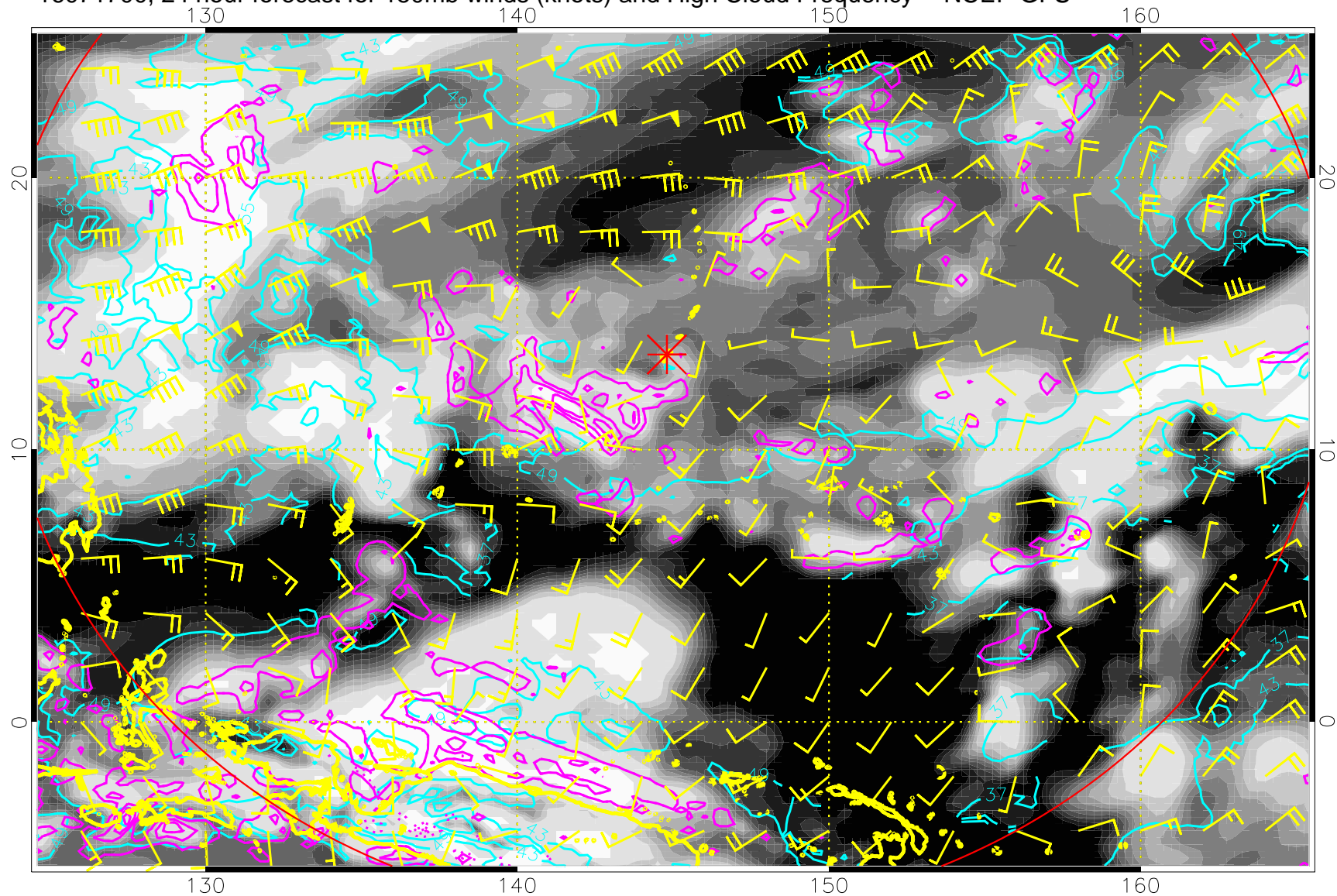


16071618, 18 hour forecast for 150mb winds (knots) and High Cloud Frequency -- NCEP GFS



High Cloud Altitude from 37 kft at 6 kft intervals  
Precip (tot dot, conv sol) mm/day 40 mm/day contours, min 20

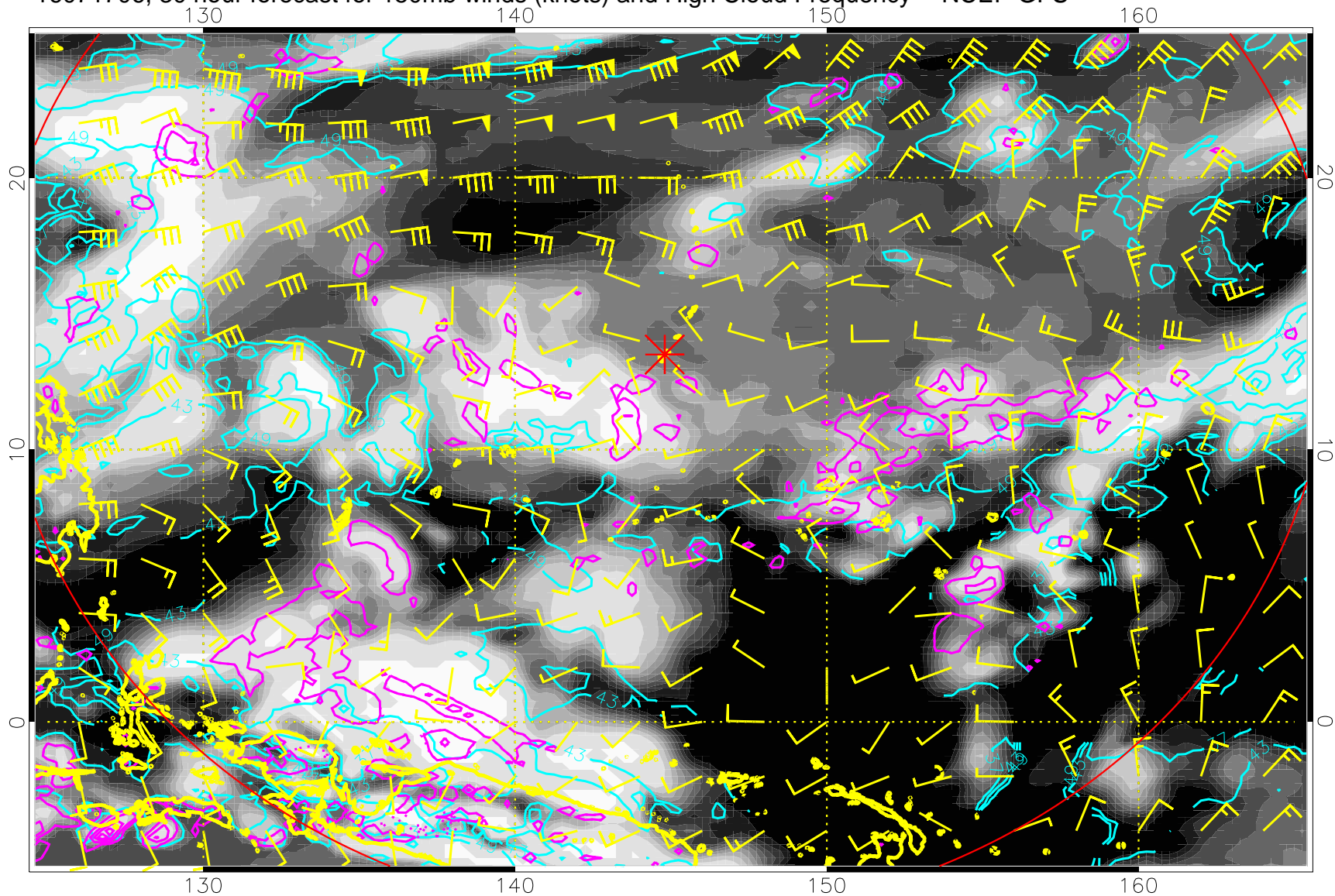
16071700, 24 hour forecast for 150mb winds (knots) and High Cloud Frequency -- NCEP GFS



High Cloud Altitude from 37 kft at 6 kft intervals  
Precip (tot dot, conv sol) mm/day 40 mm/day contours, min 20

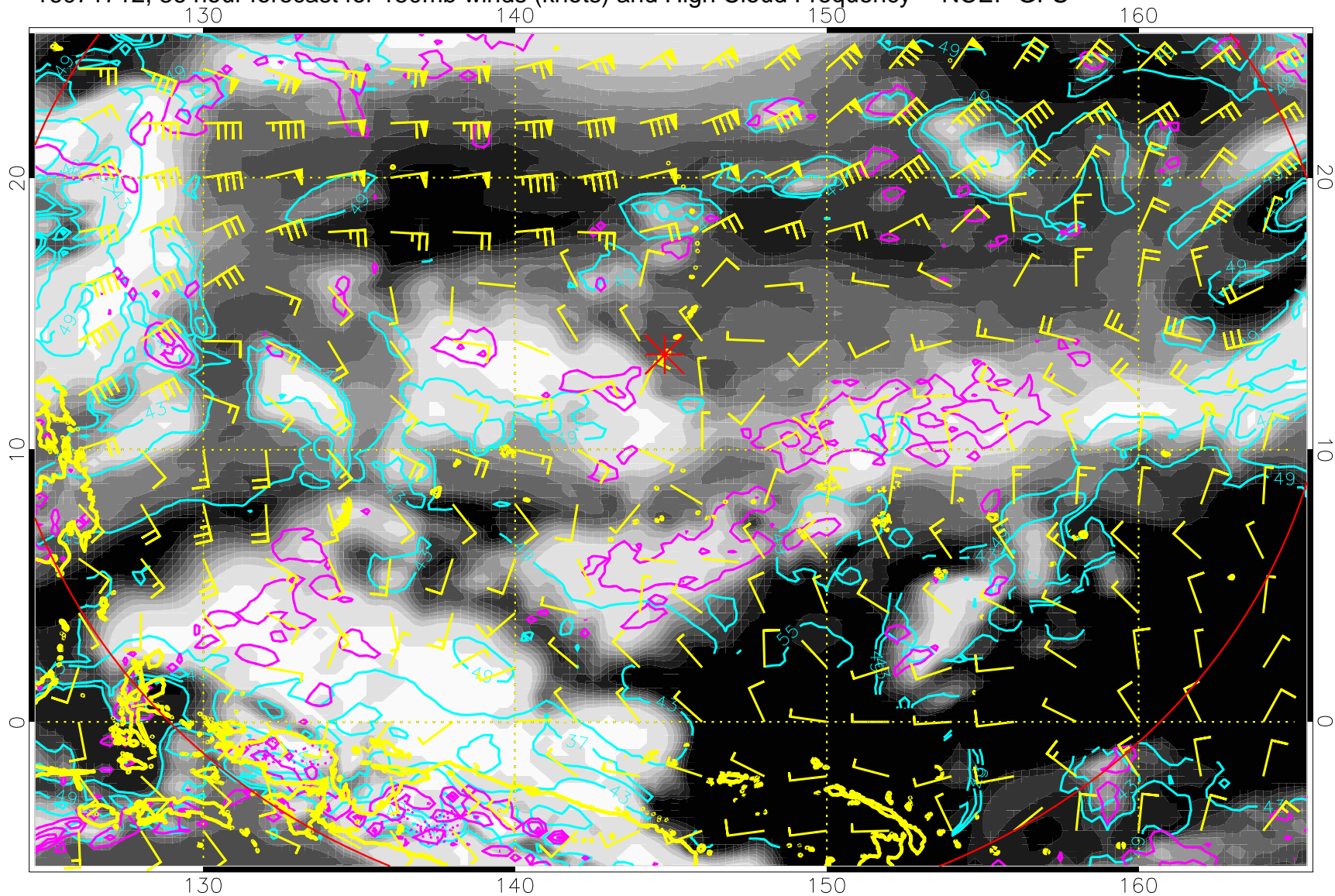


16071706, 30 hour forecast for 150mb winds (knots) and High Cloud Frequency -- NCEP GFS



High Cloud Altitude from 37 kft at 6 kft intervals  
Precip (tot dot, conv sol) mm/day 40 mm/day contours, min 20

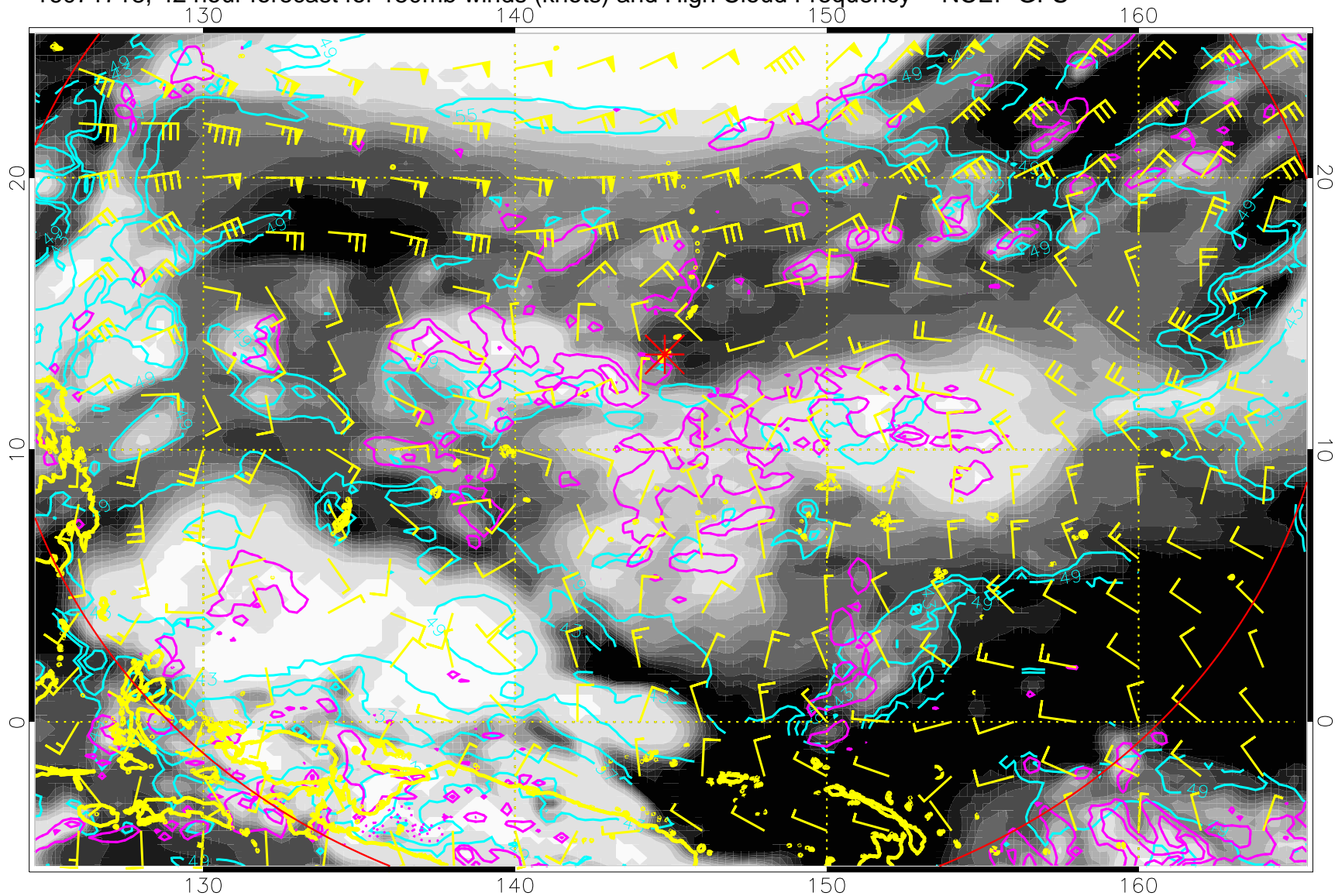
16071712, 36 hour forecast for 150mb winds (knots) and High Cloud Frequency -- NCEP GFS



High Cloud Altitude from 37 kft at 6 kft intervals  
Precip (tot dot, conv sol) mm/day 40 mm/day contours, min 20

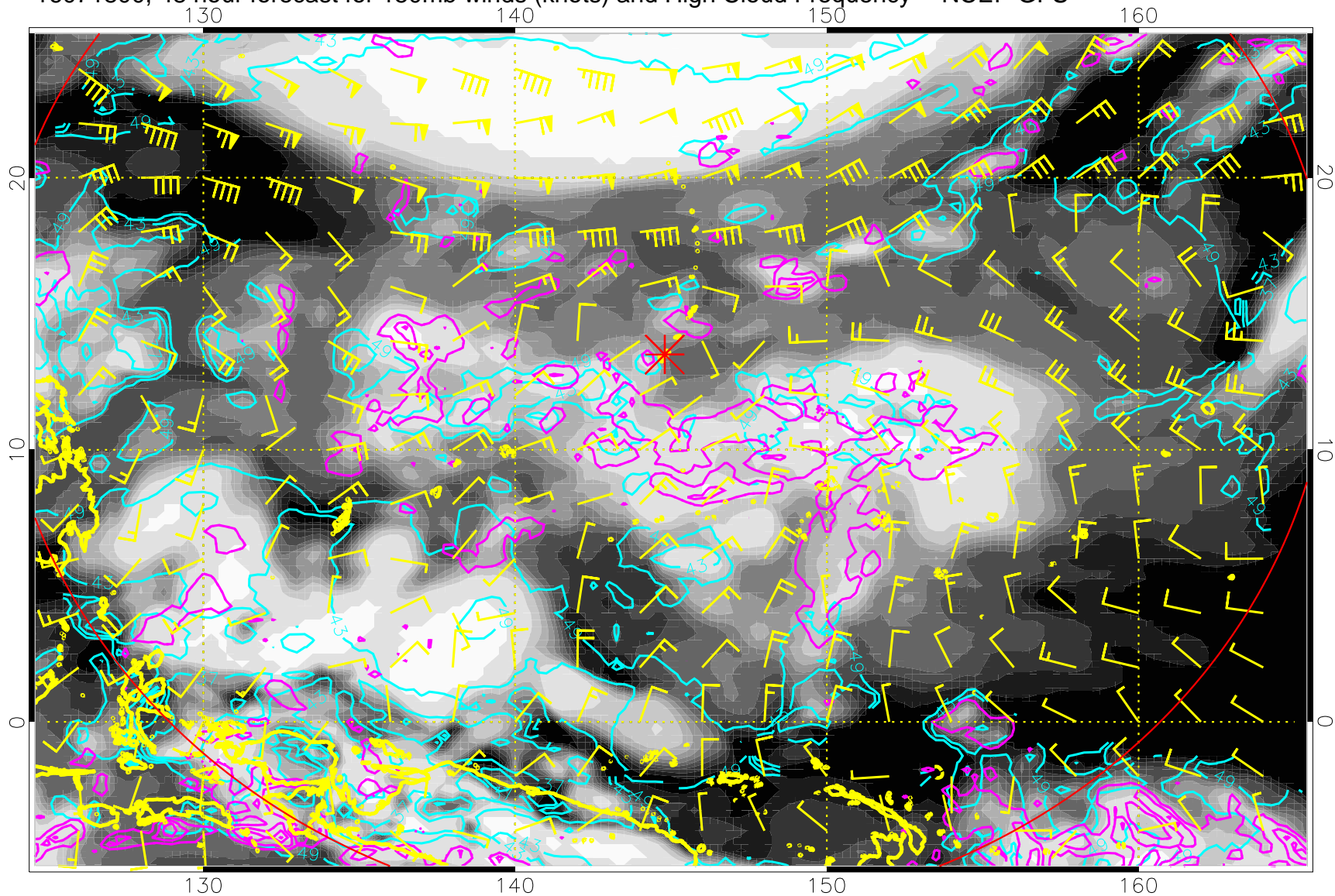


16071718, 42 hour forecast for 150mb winds (knots) and High Cloud Frequency -- NCEP GFS



High Cloud Altitude from 37 kft at 6 kft intervals  
Precip (tot dot, conv sol) mm/day 40 mm/day contours, min 20

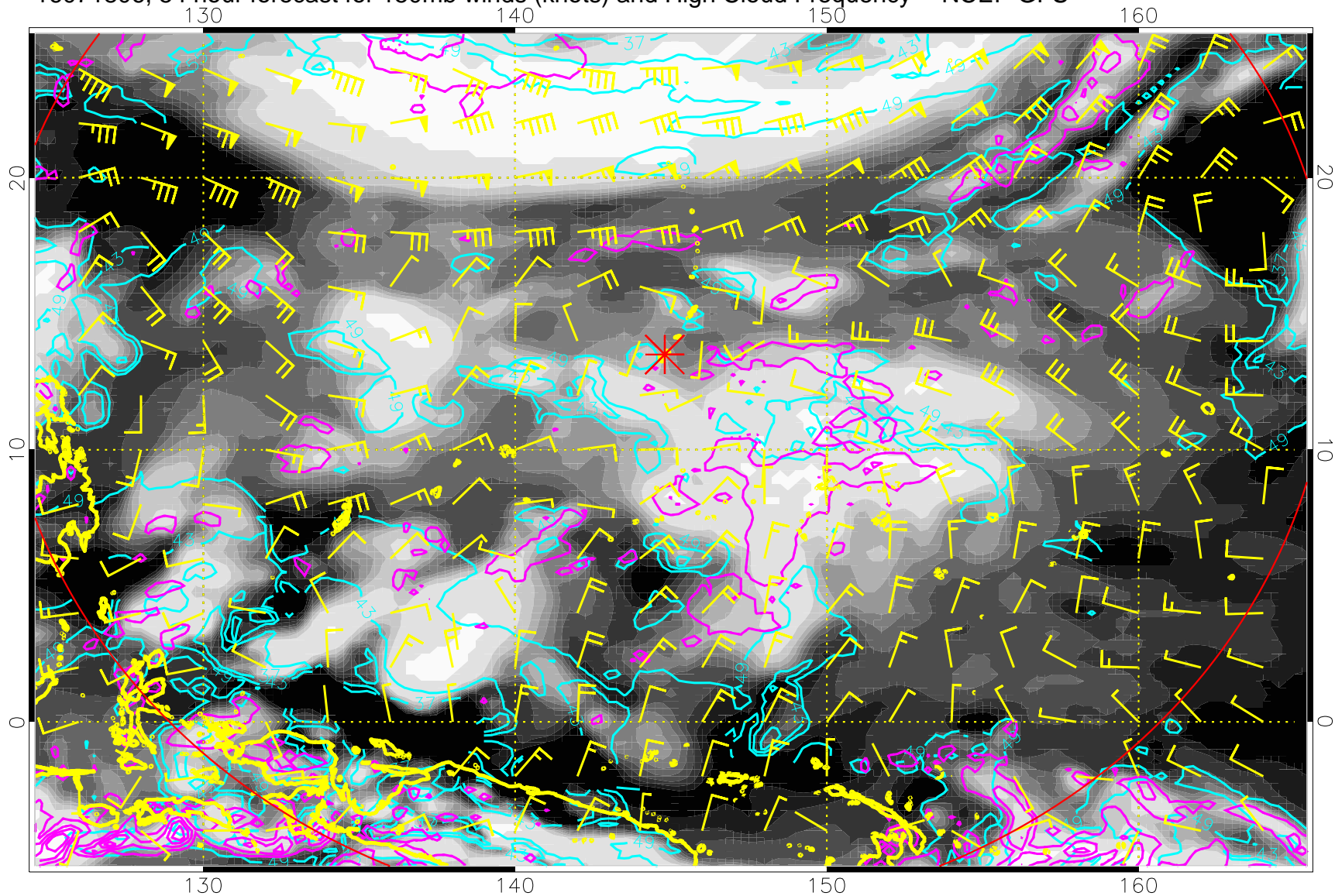
16071800, 48 hour forecast for 150mb winds (knots) and High Cloud Frequency -- NCEP GFS



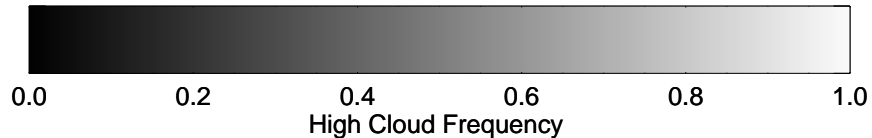
High Cloud Altitude from 37 kft at 6 kft intervals  
Precip (tot dot, conv sol) mm/day 40 mm/day contours, min 20



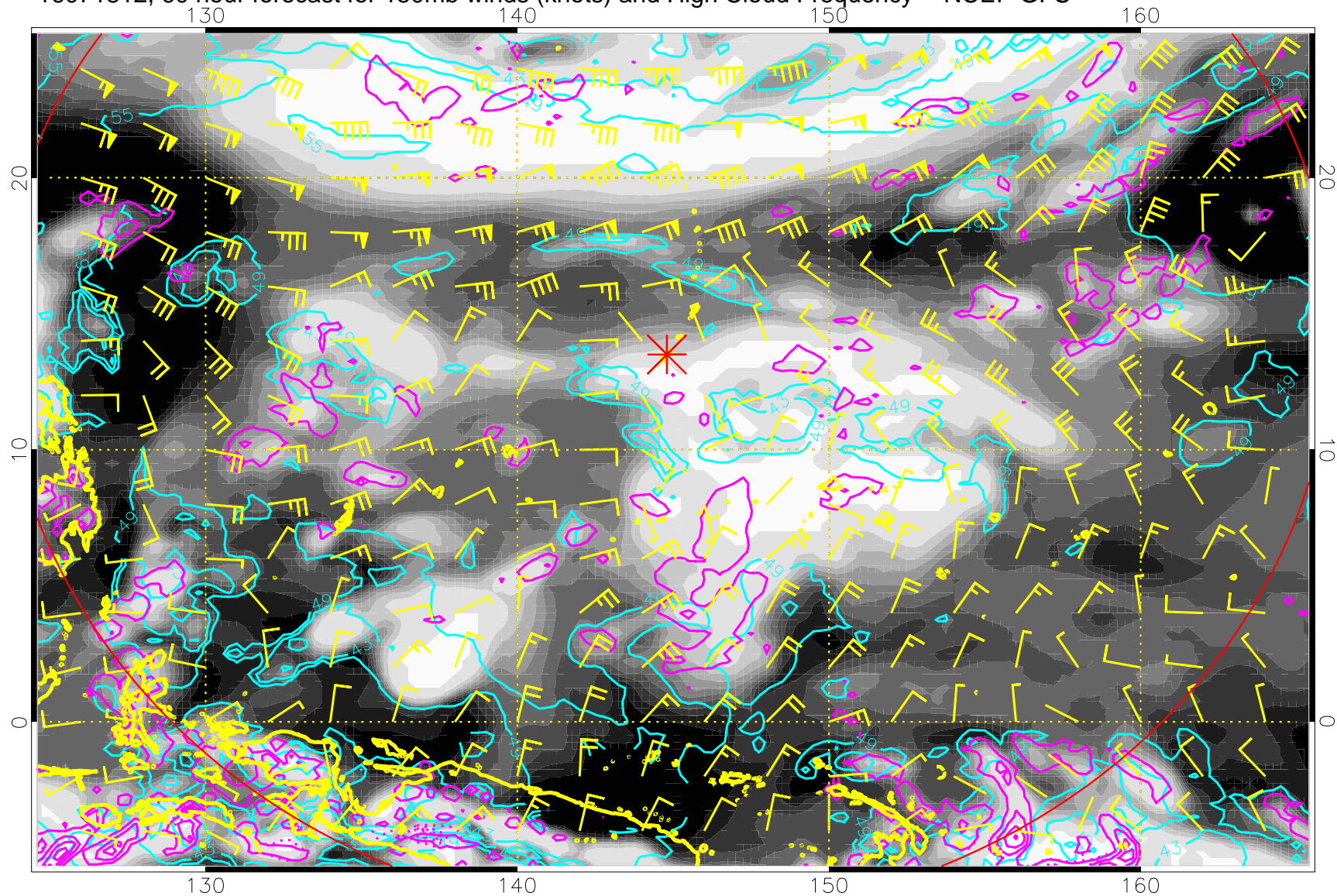
16071806, 54 hour forecast for 150mb winds (knots) and High Cloud Frequency -- NCEP GFS



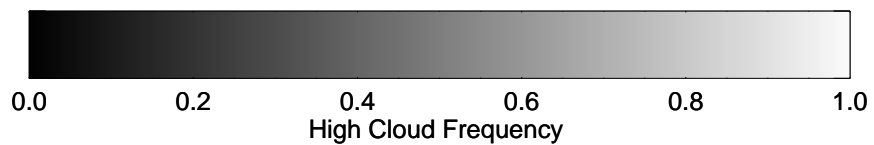
High Cloud Altitude from 37 kft at 6 kft intervals  
Precip (tot dot, conv sol) mm/day 40 mm/day contours, min 20



16071812, 60 hour forecast for 150mb winds (knots) and High Cloud Frequency -- NCEP GFS

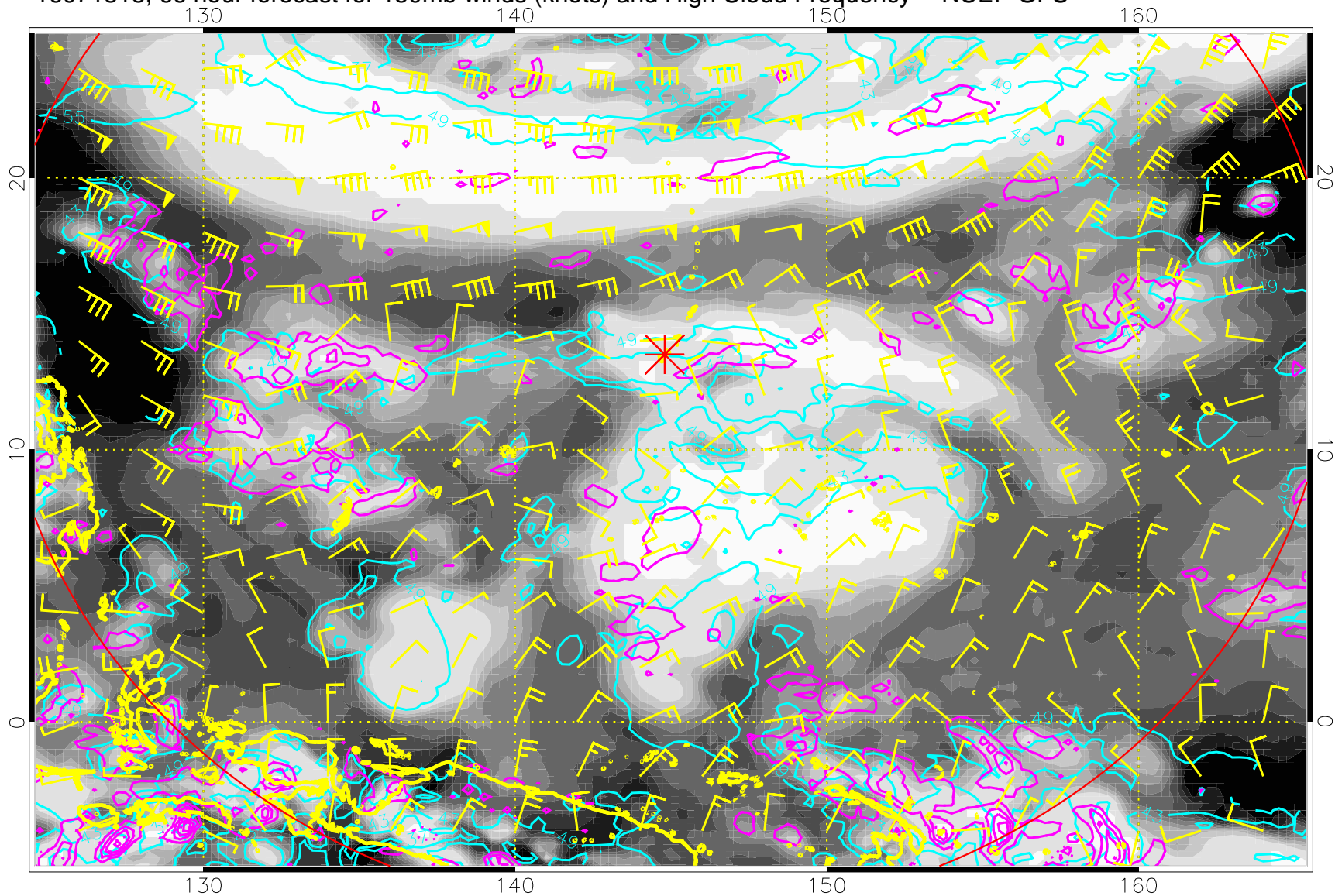


High Cloud Altitude from 37 kft at 6 kft intervals  
Precip (tot dot, conv sol) mm/day 40 mm/day contours, min 20



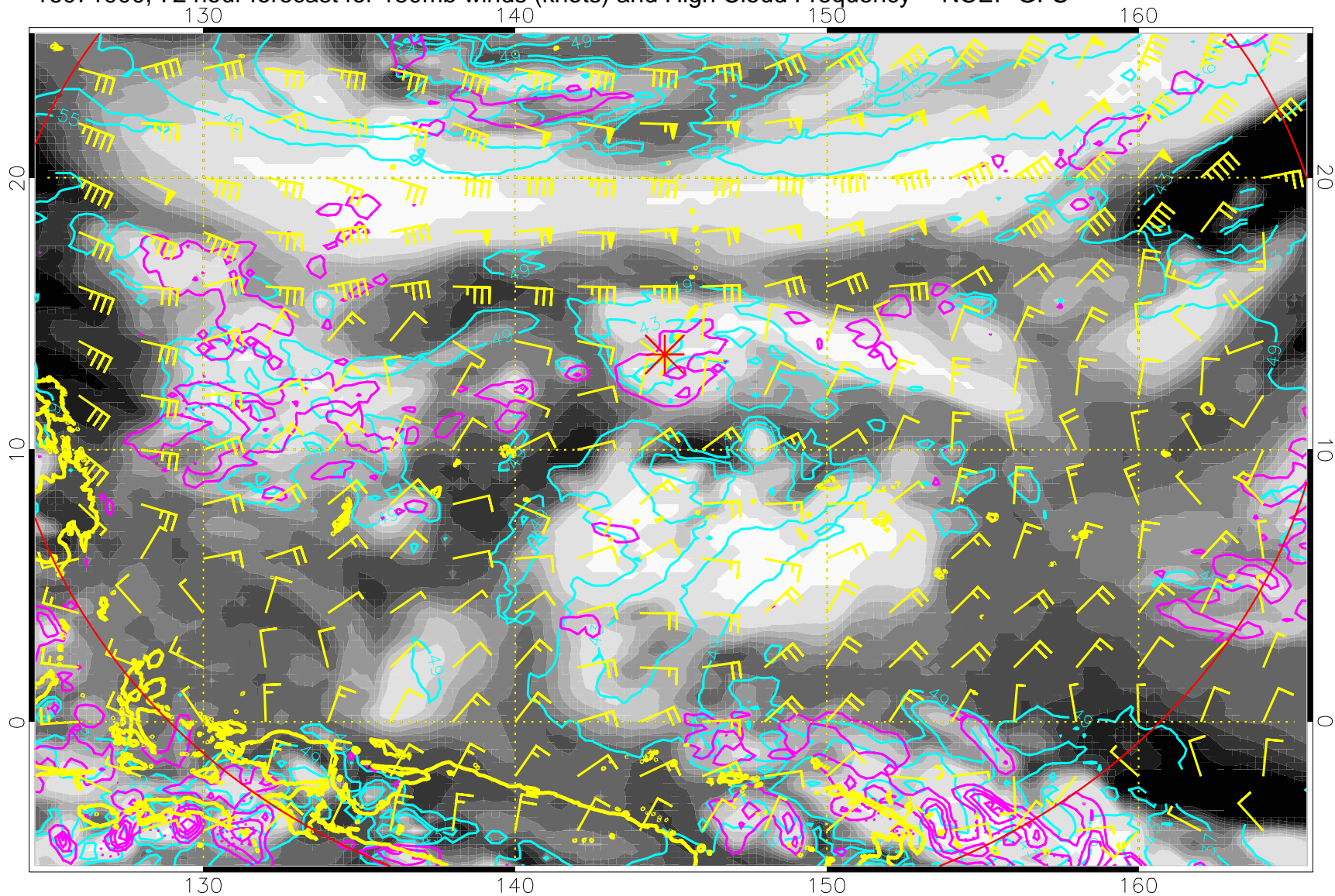


16071818, 66 hour forecast for 150mb winds (knots) and High Cloud Frequency -- NCEP GFS



High Cloud Altitude from 37 kft at 6 kft intervals  
Precip (tot dot, conv sol) mm/day 40 mm/day contours, min 20

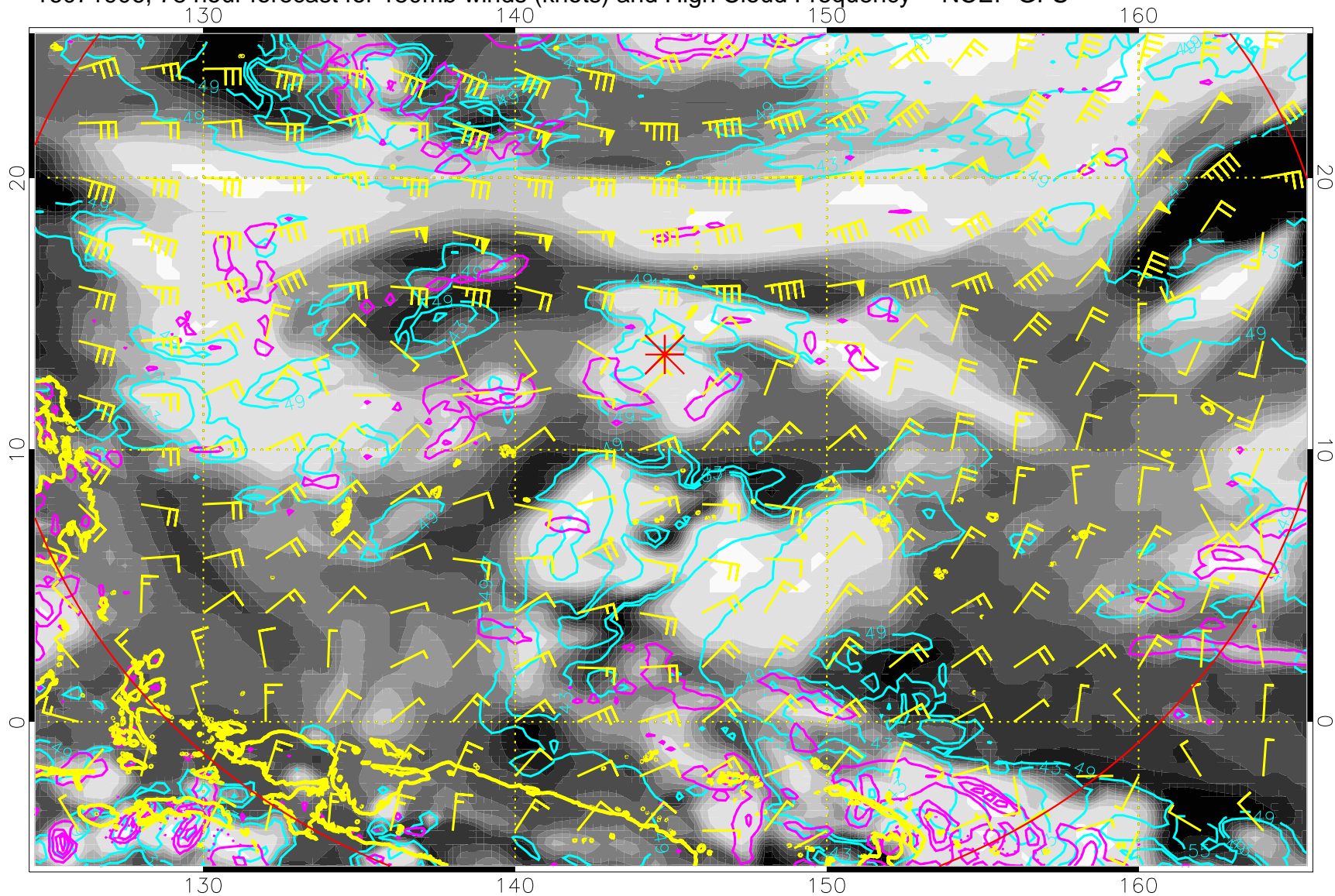
16071900, 72 hour forecast for 150mb winds (knots) and High Cloud Frequency -- NCEP GFS



High Cloud Altitude from 37 kft at 6 kft intervals  
Precip (tot dot, conv sol) mm/day 40 mm/day contours, min 20

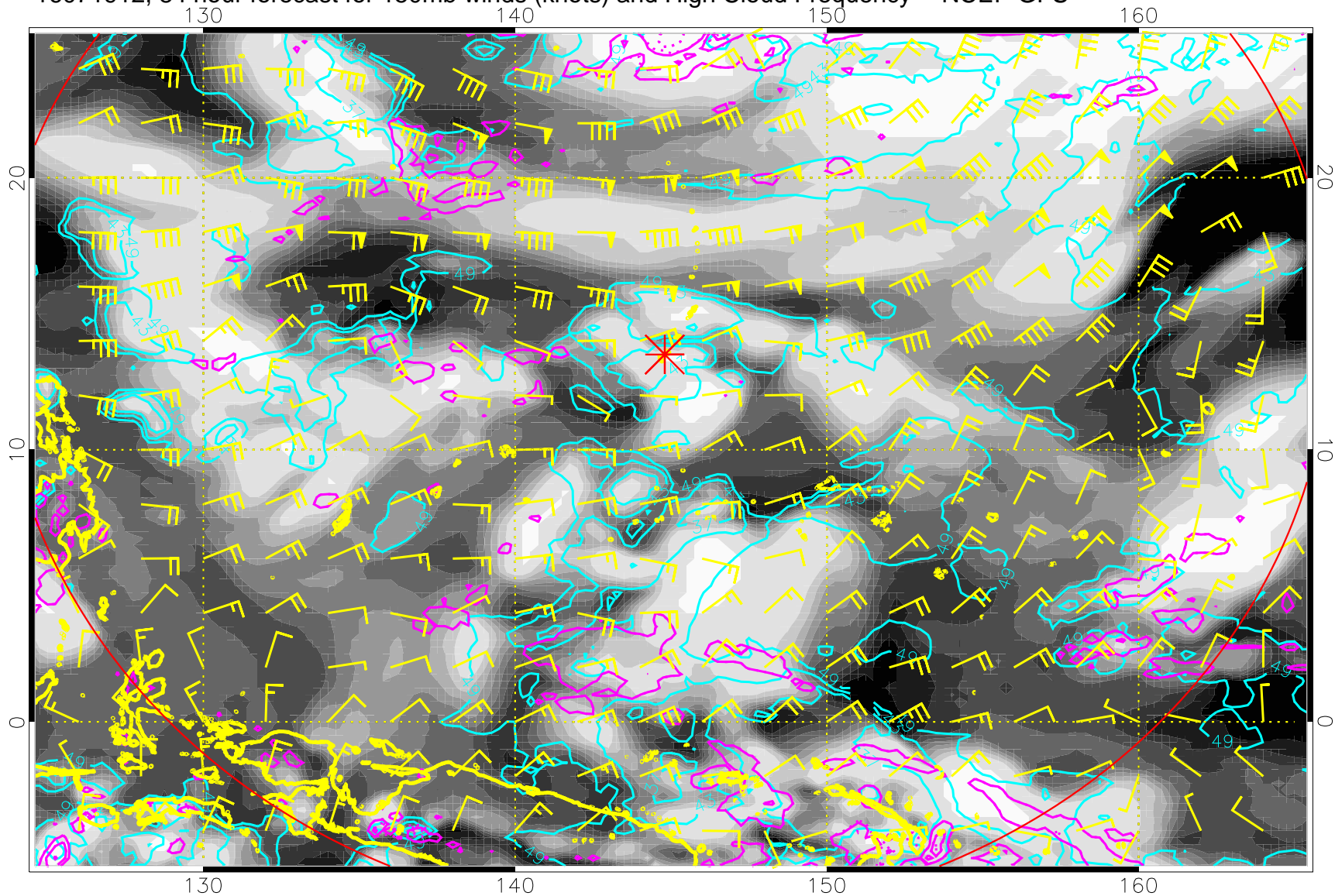


16071906, 78 hour forecast for 150mb winds (knots) and High Cloud Frequency -- NCEP GFS



High Cloud Altitude from 37 kft at 6 kft intervals  
Precip (tot dot, conv sol) mm/day 40 mm/day contours, min 20

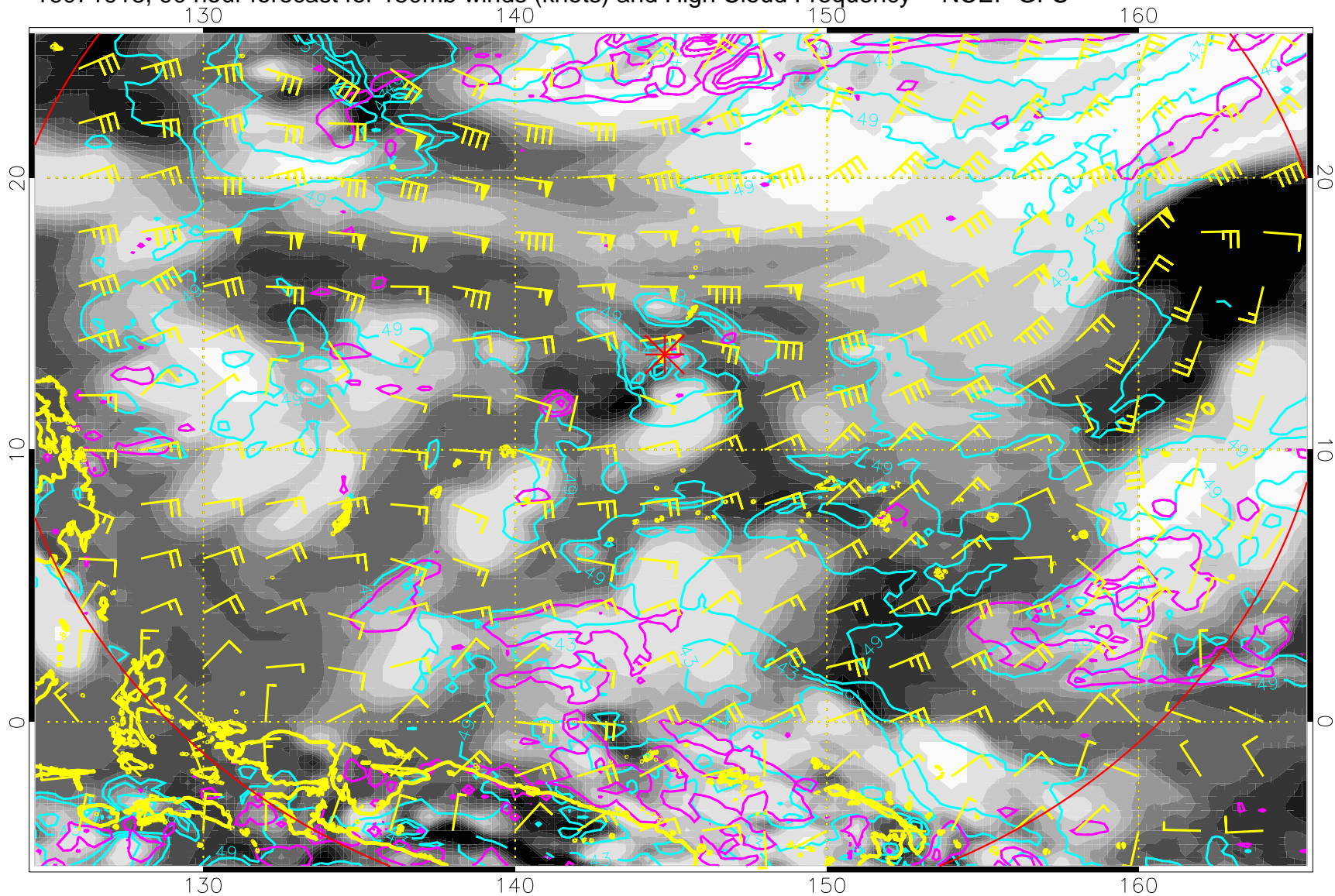
16071912, 84 hour forecast for 150mb winds (knots) and High Cloud Frequency -- NCEP GFS



High Cloud Altitude from 37 kft at 6 kft intervals  
Precip (tot dot, conv sol) mm/day 40 mm/day contours, min 20

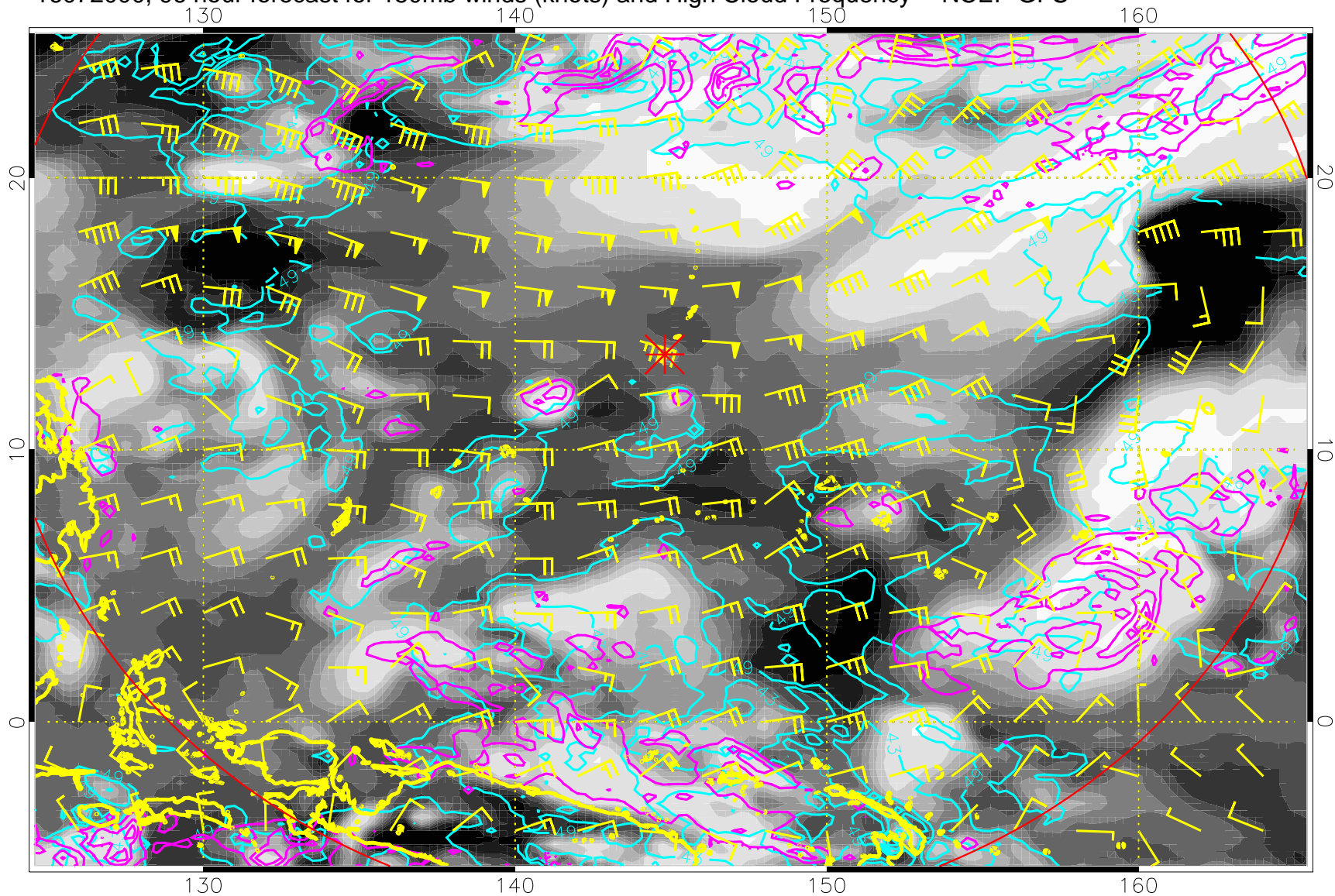


16071918, 90 hour forecast for 150mb winds (knots) and High Cloud Frequency -- NCEP GFS

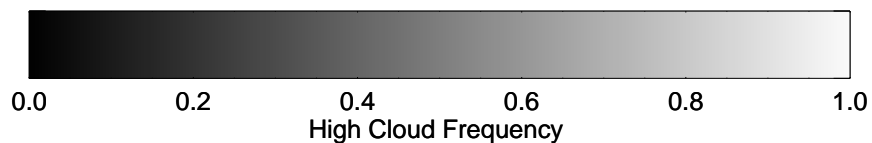


High Cloud Altitude from 37 kft at 6 kft intervals  
Precip (tot dot, conv sol) mm/day 40 mm/day contours, min 20

16072000, 96 hour forecast for 150mb winds (knots) and High Cloud Frequency -- NCEP GFS

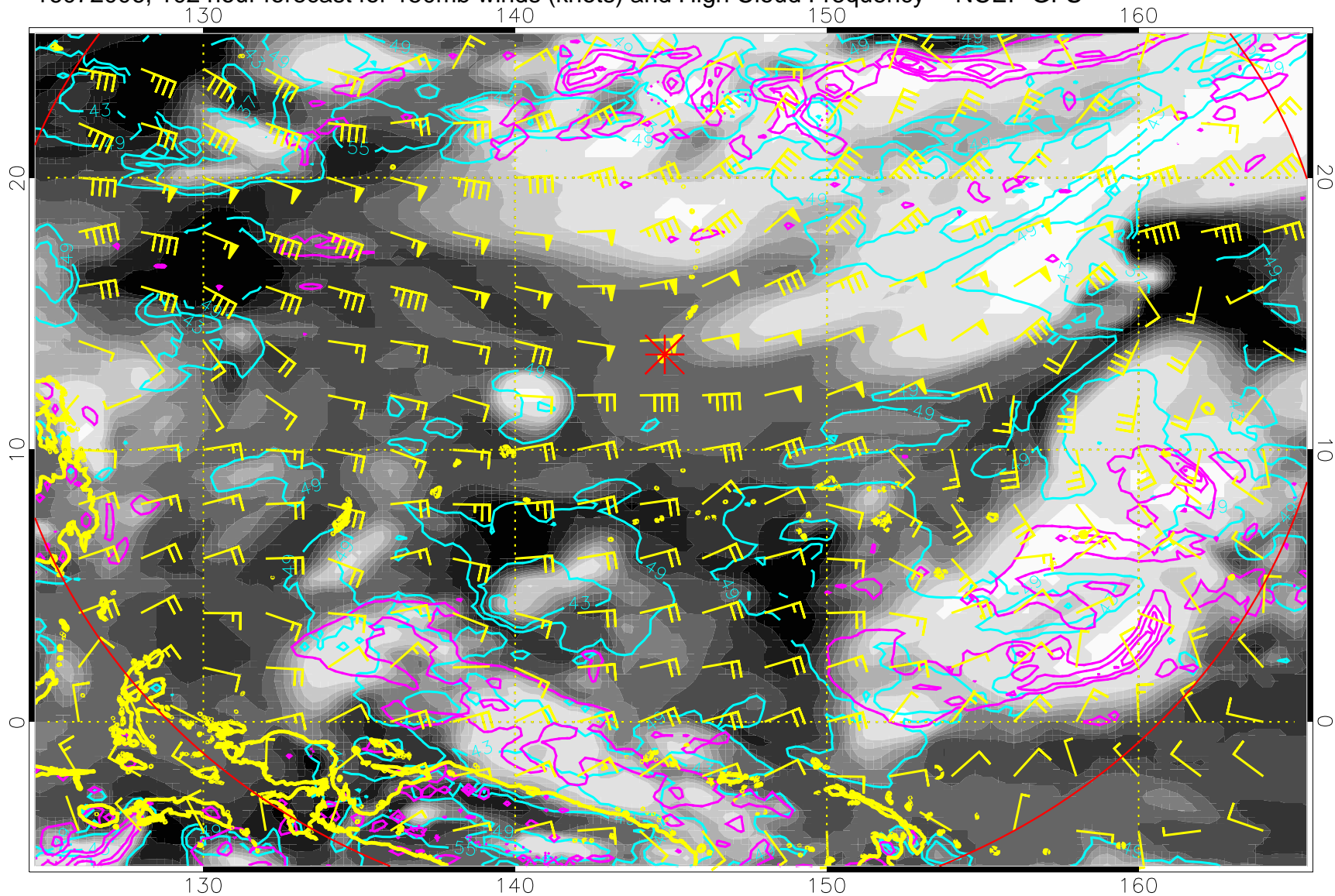


High Cloud Altitude from 37 kft at 6 kft intervals  
Precip (tot dot, conv sol) mm/day 40 mm/day contours, min 20



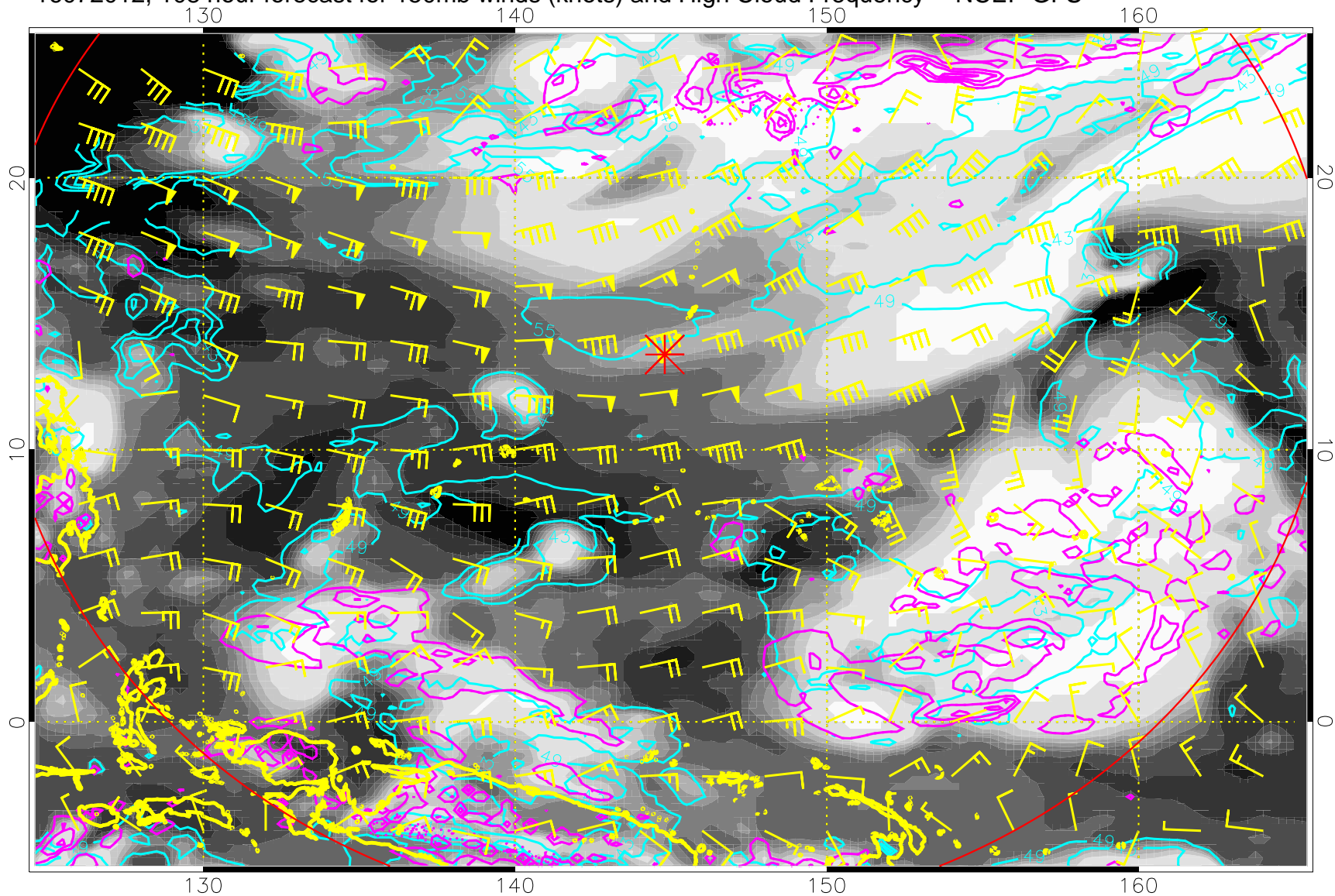


16072006, 102 hour forecast for 150mb winds (knots) and High Cloud Frequency -- NCEP GFS



High Cloud Altitude from 37 kft at 6 kft intervals  
Precip (tot dot, conv sol) mm/day 40 mm/day contours, min 20

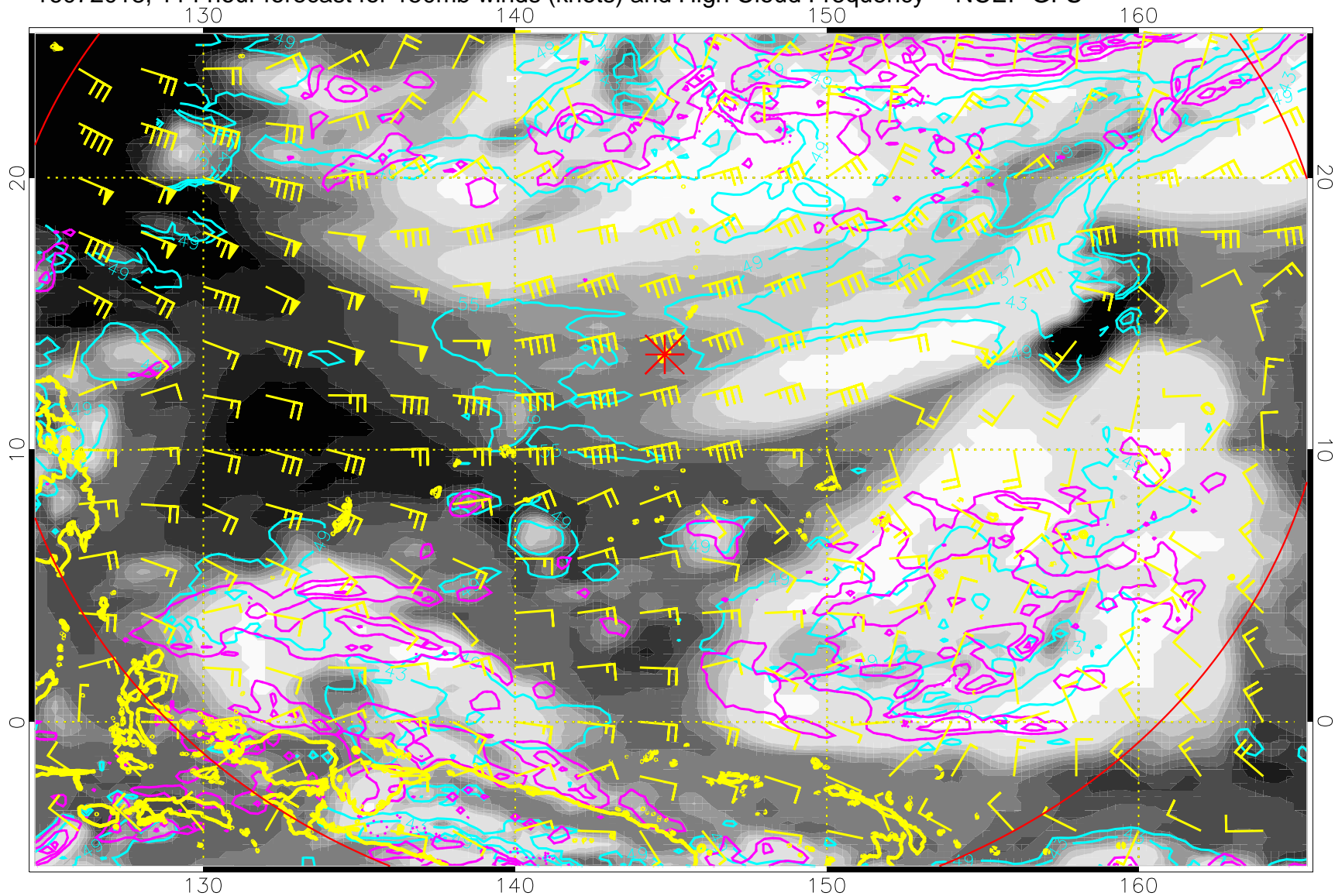
16072012, 108 hour forecast for 150mb winds (knots) and High Cloud Frequency -- NCEP GFS



High Cloud Altitude from 37 kft at 6 kft intervals  
Precip (tot dot, conv sol) mm/day 40 mm/day contours, min 20

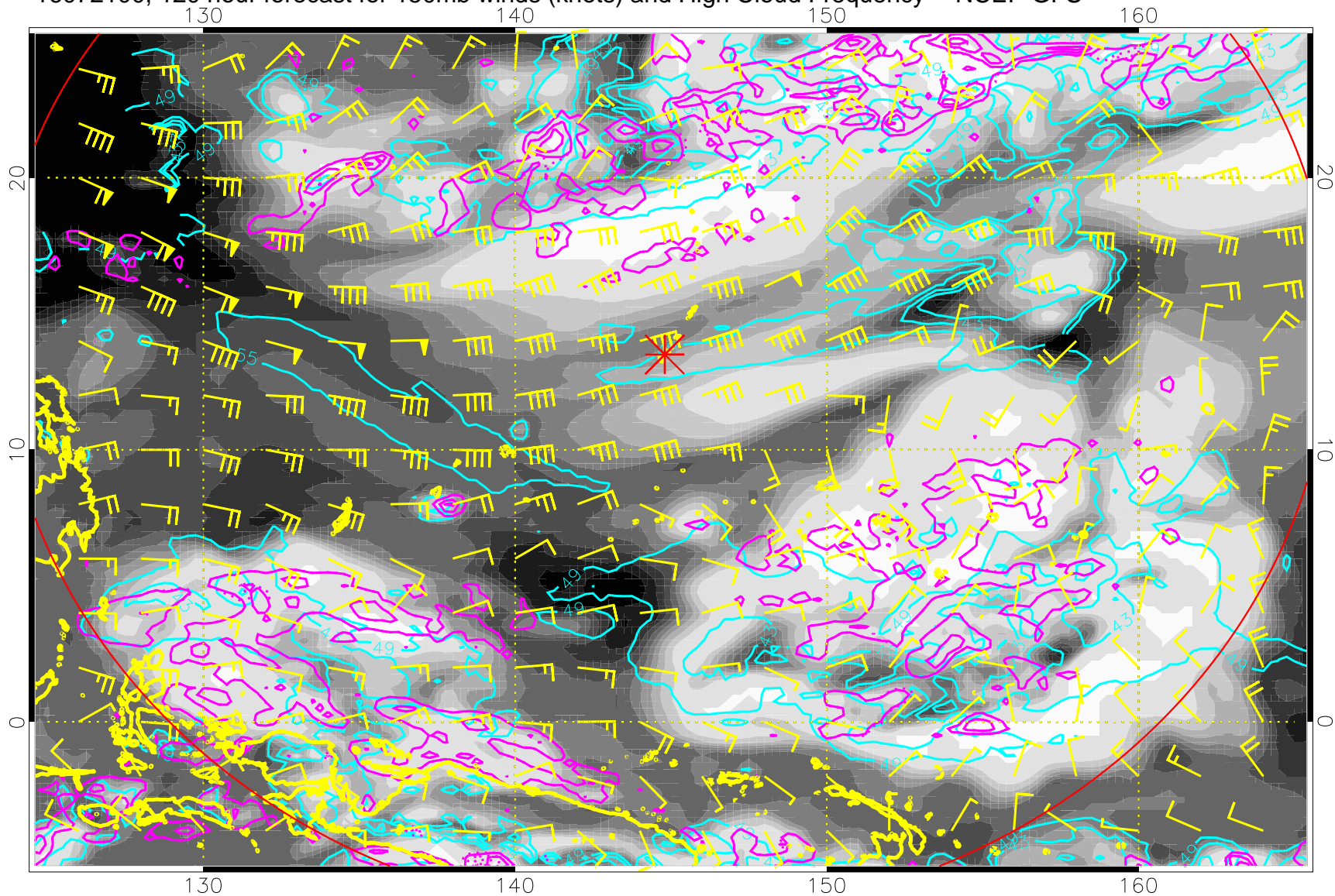


16072018, 114 hour forecast for 150mb winds (knots) and High Cloud Frequency -- NCEP GFS



High Cloud Altitude from 37 kft at 6 kft intervals  
Precip (tot dot, conv sol) mm/day 40 mm/day contours, min 20

16072100, 120 hour forecast for 150mb winds (knots) and High Cloud Frequency -- NCEP GFS



High Cloud Altitude from 37 kft at 6 kft intervals  
Precip (tot dot, conv sol) mm/day 40 mm/day contours, min 20