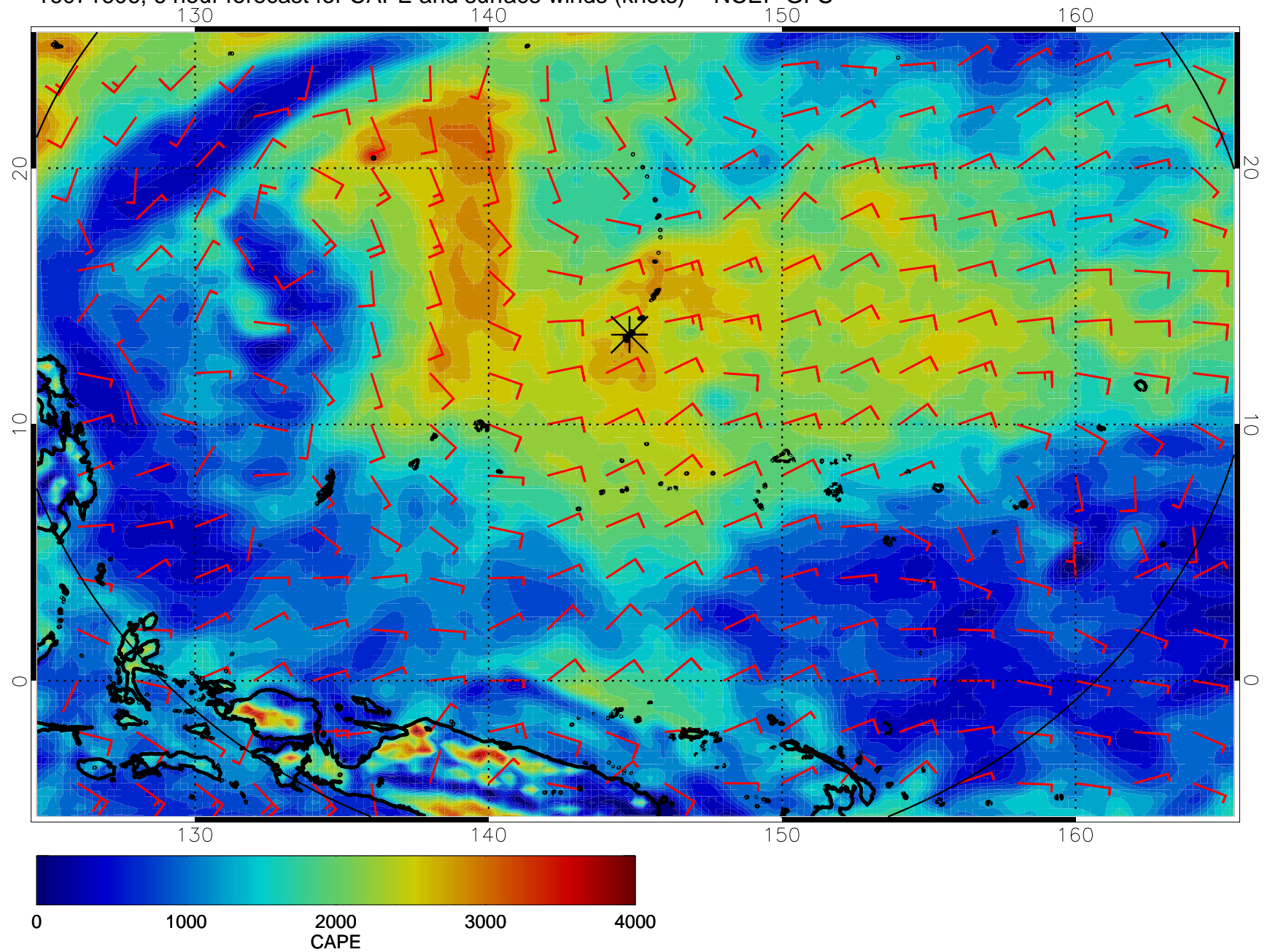
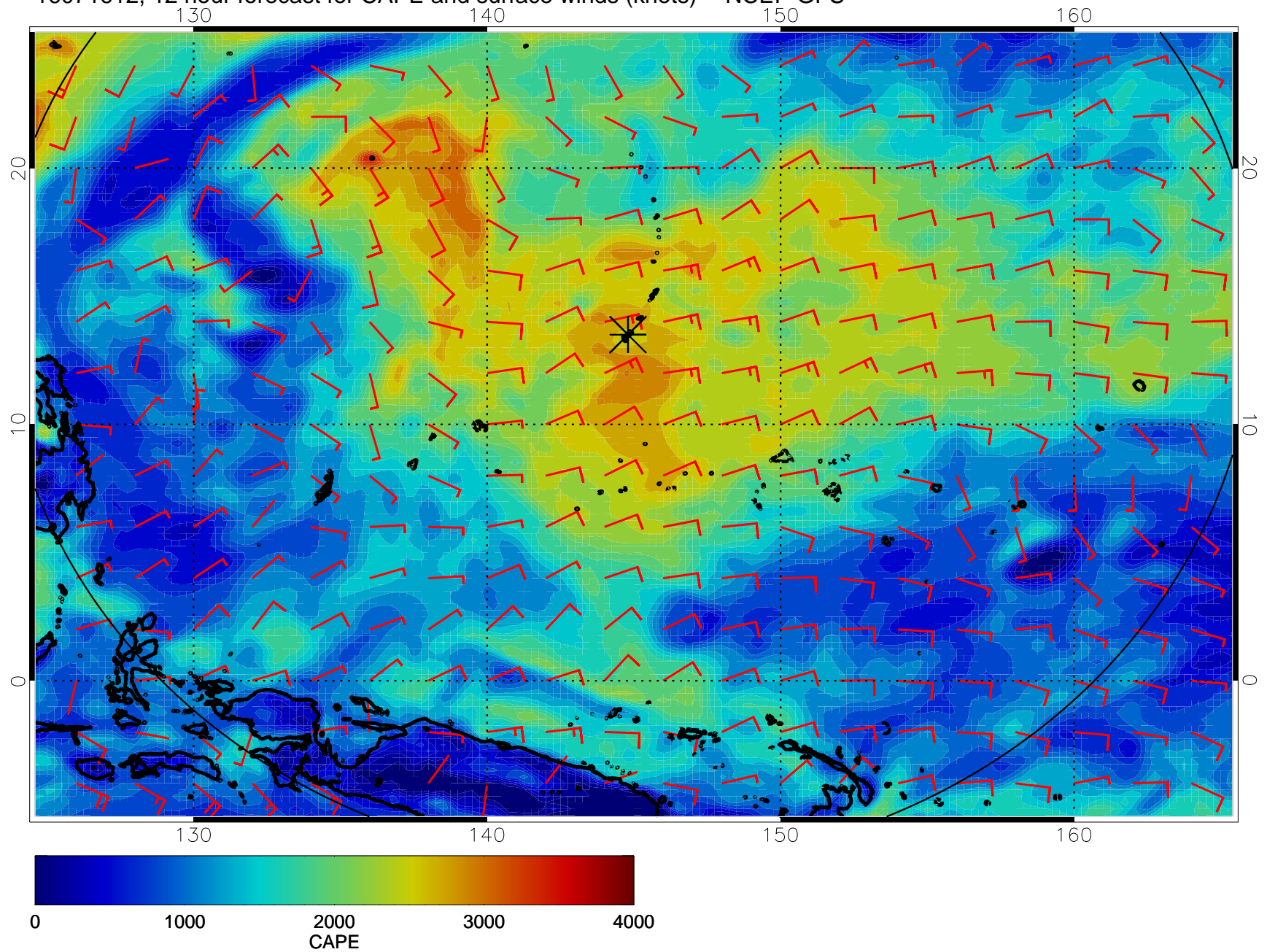


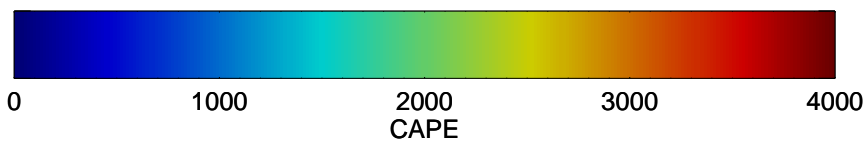
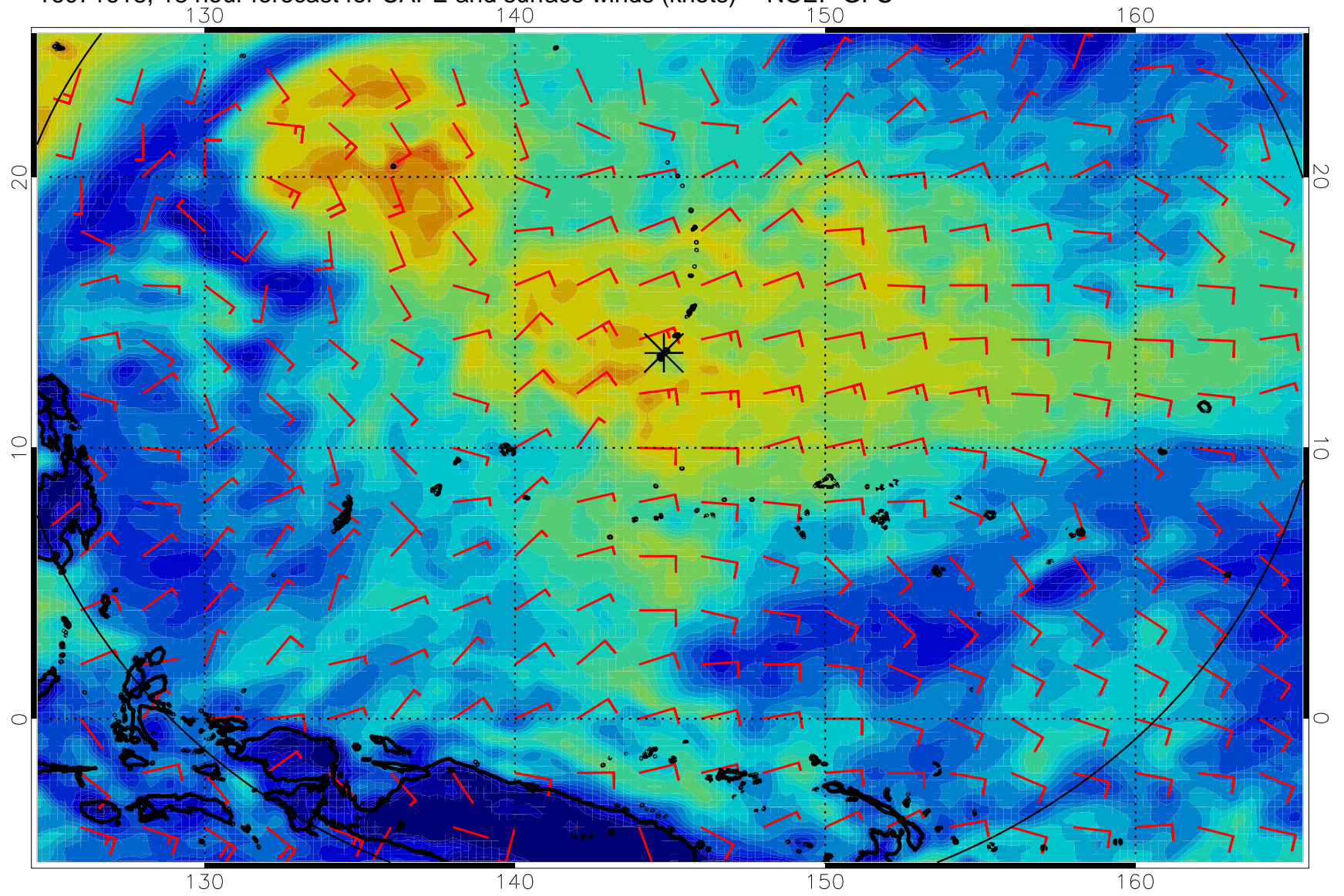
16071606, 6 hour forecast for CAPE and surface winds (knots) -- NCEP GFS



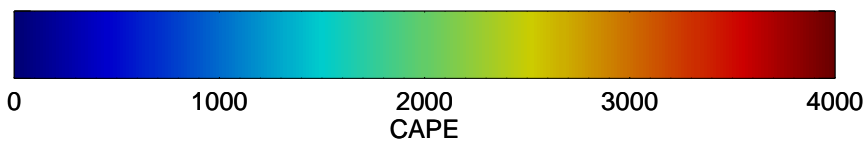
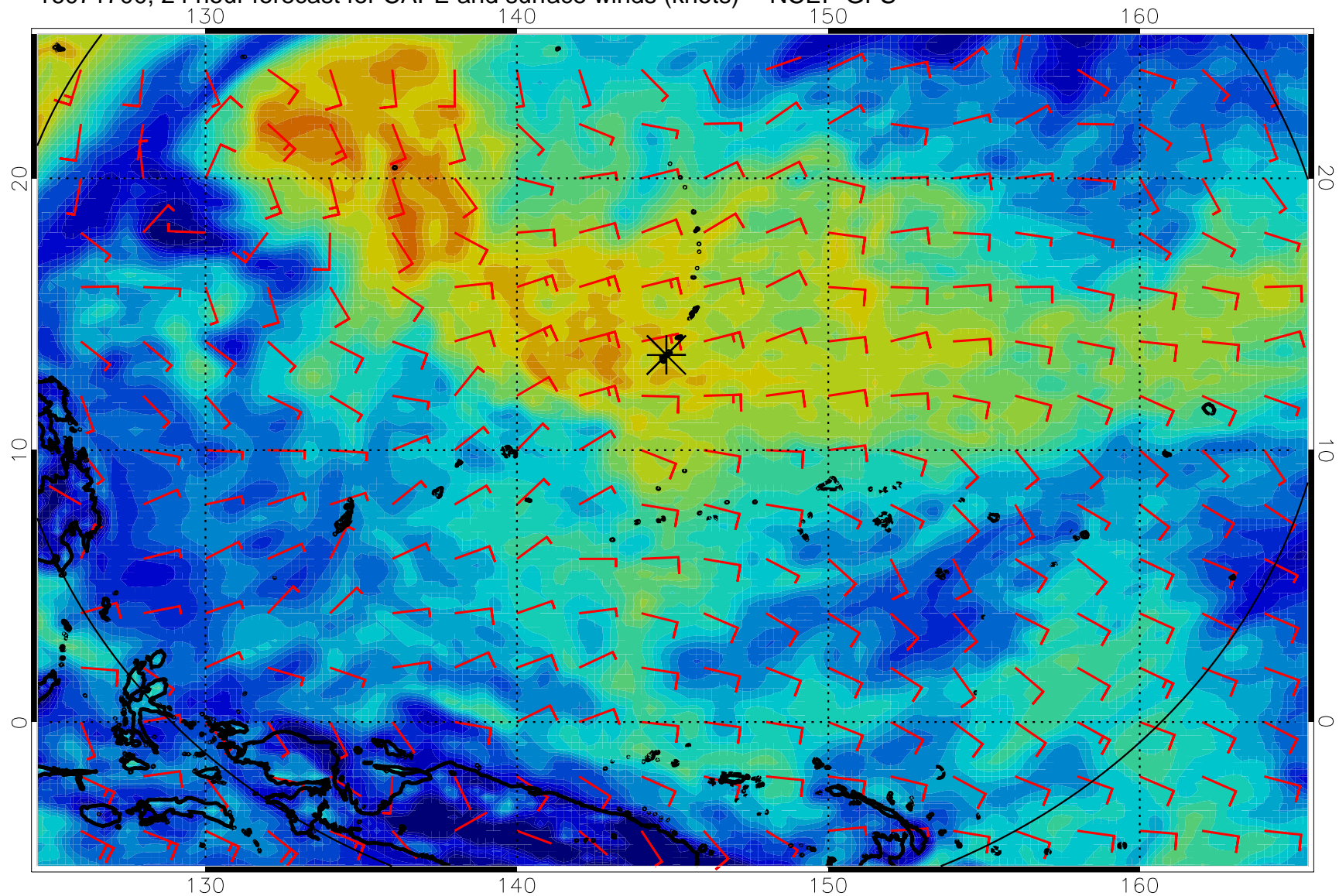
16071612, 12 hour forecast for CAPE and surface winds (knots) -- NCEP GFS



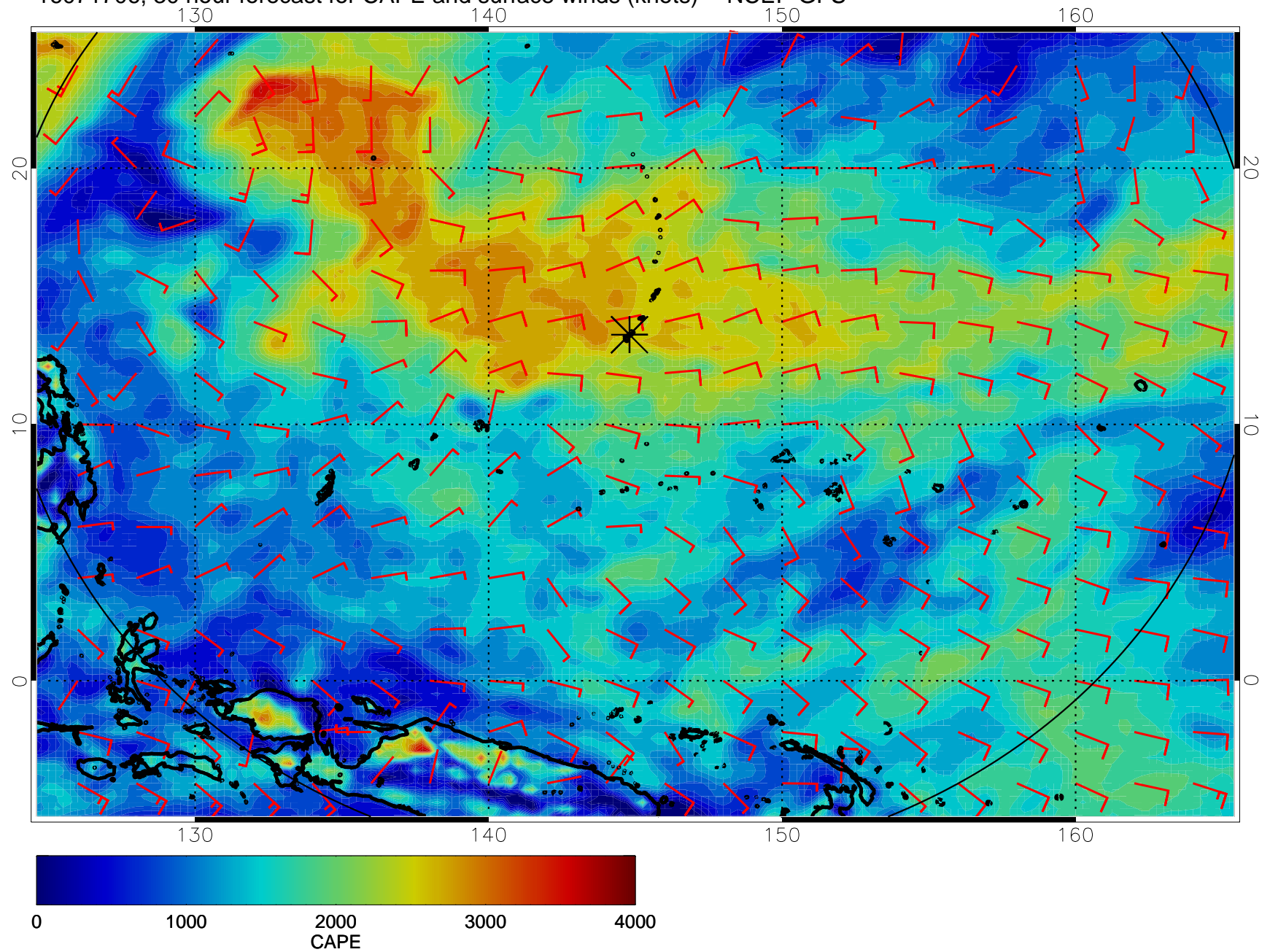
16071618, 18 hour forecast for CAPE and surface winds (knots) -- NCEP GFS



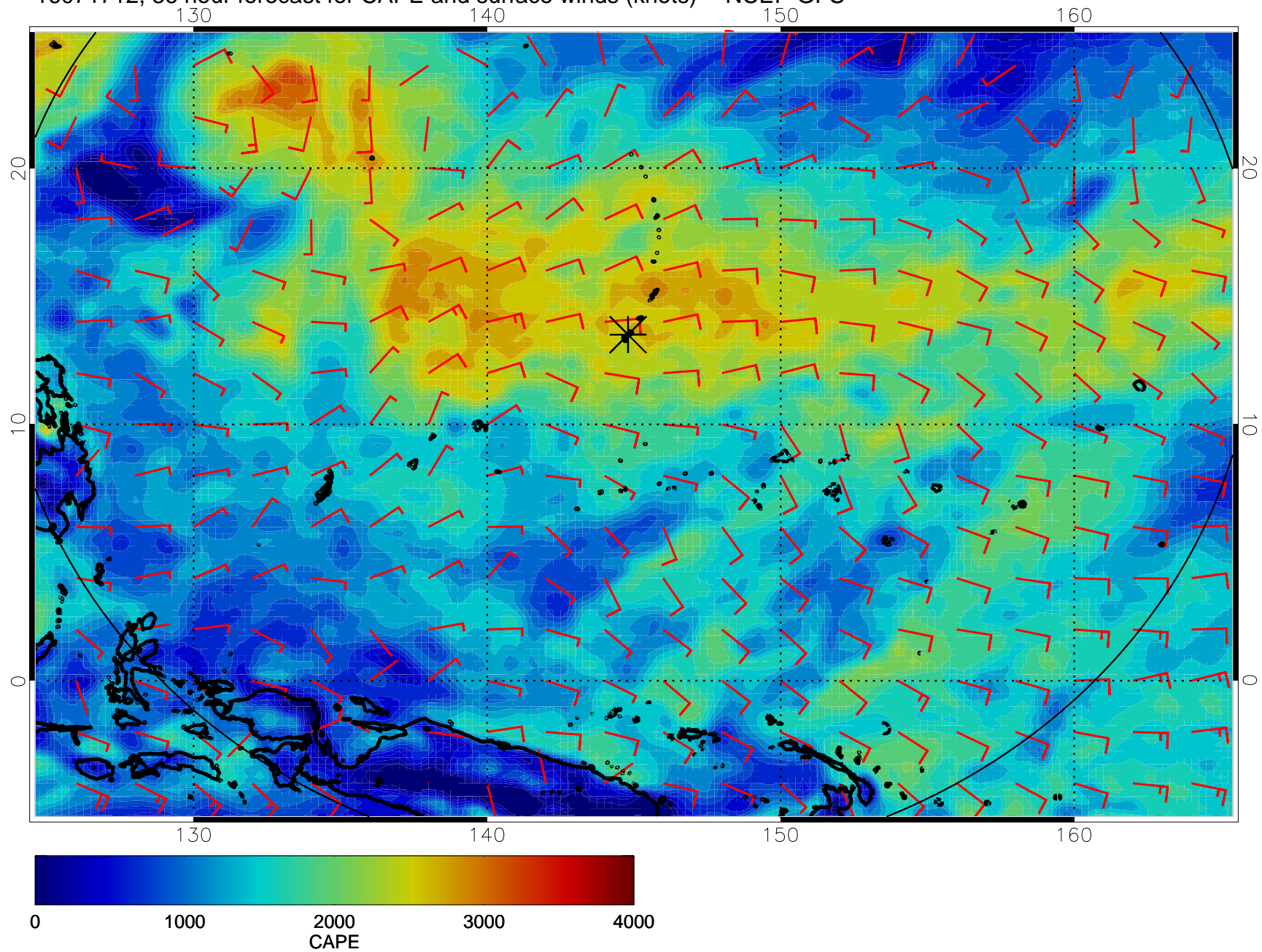
16071700, 24 hour forecast for CAPE and surface winds (knots) -- NCEP GFS



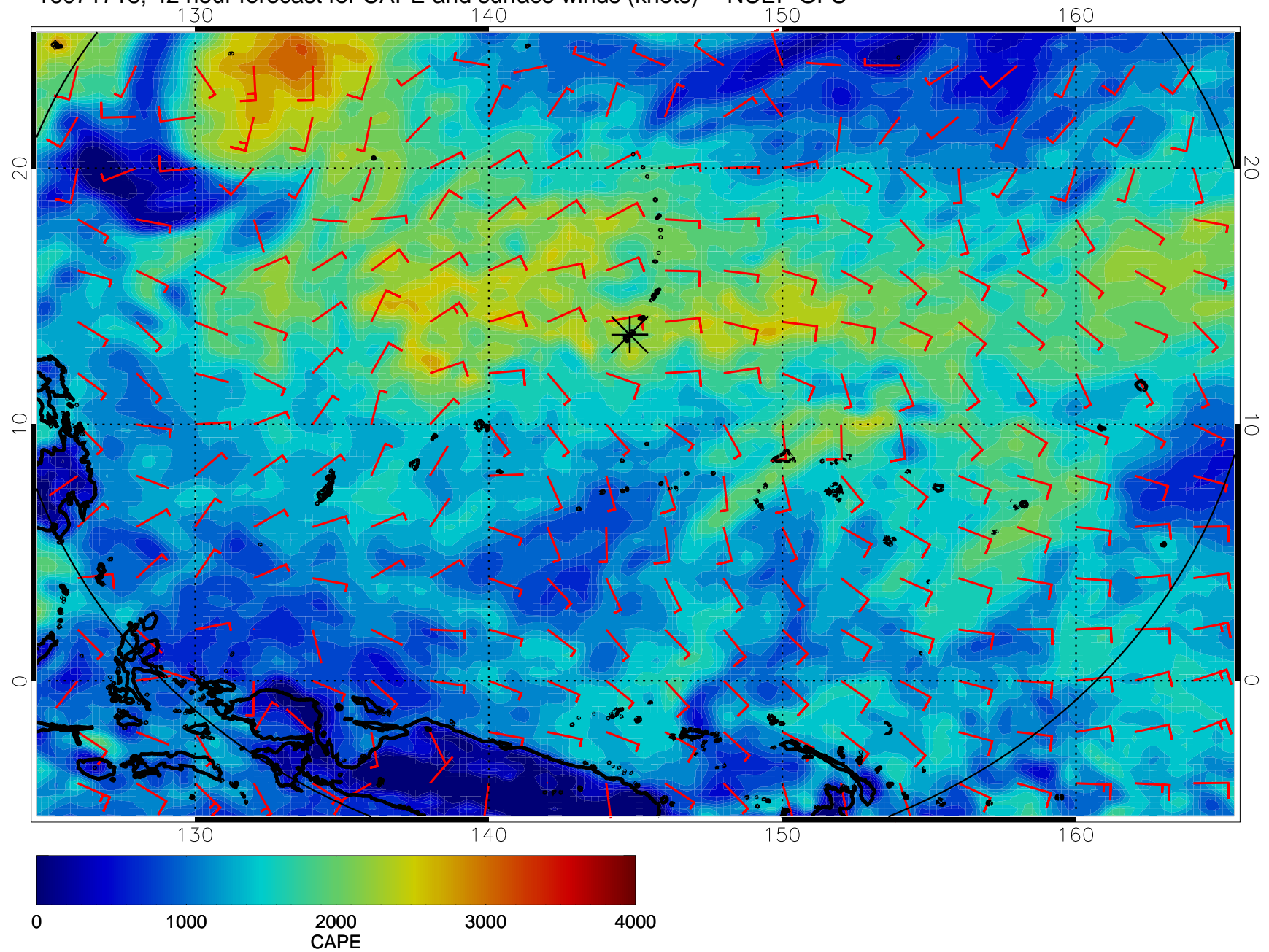
16071706, 30 hour forecast for CAPE and surface winds (knots) -- NCEP GFS



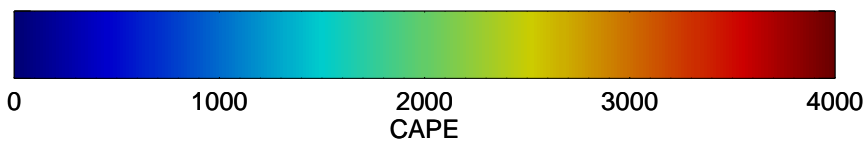
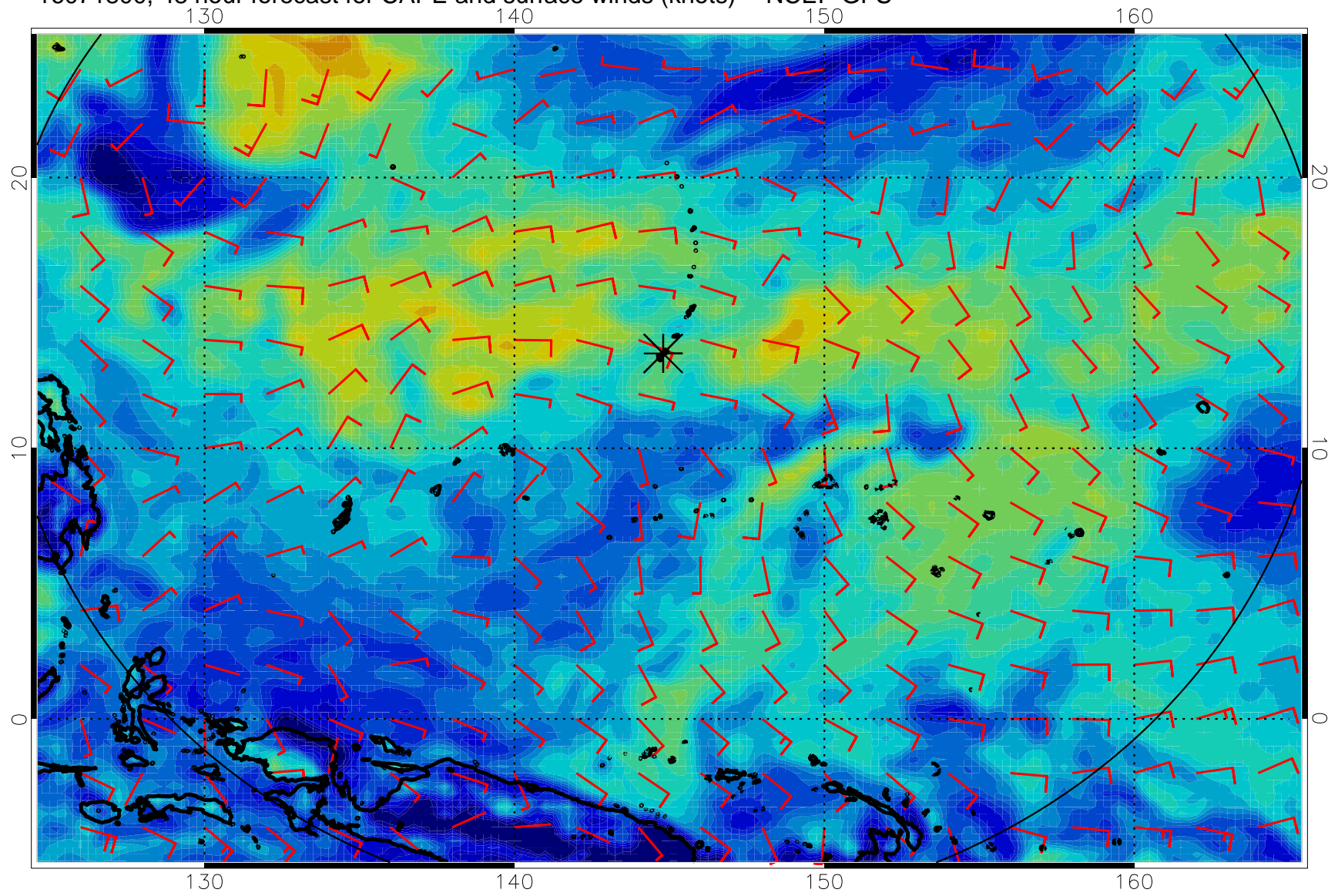
16071712, 36 hour forecast for CAPE and surface winds (knots) -- NCEP GFS



16071718, 42 hour forecast for CAPE and surface winds (knots) -- NCEP GFS

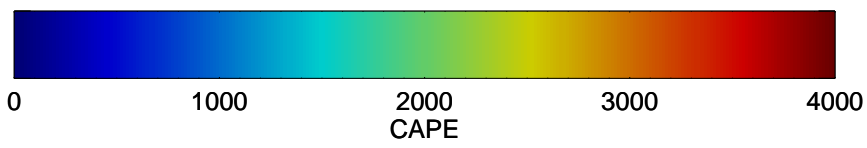
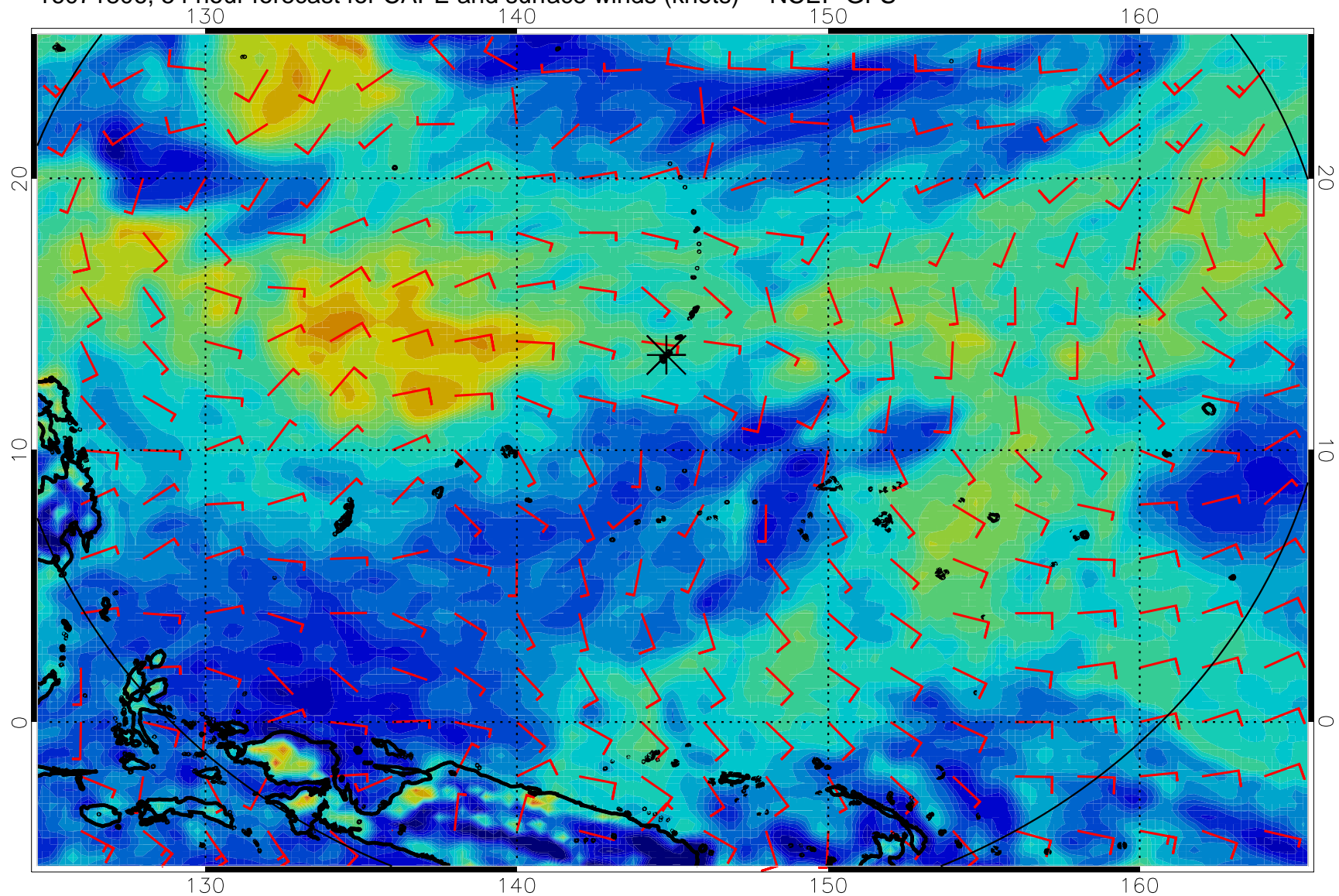


16071800, 48 hour forecast for CAPE and surface winds (knots) -- NCEP GFS

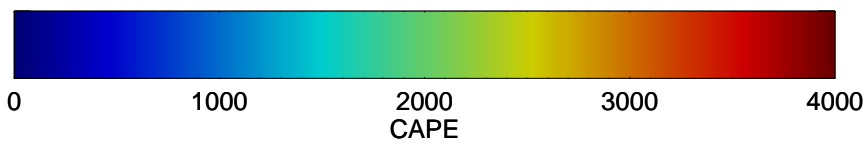
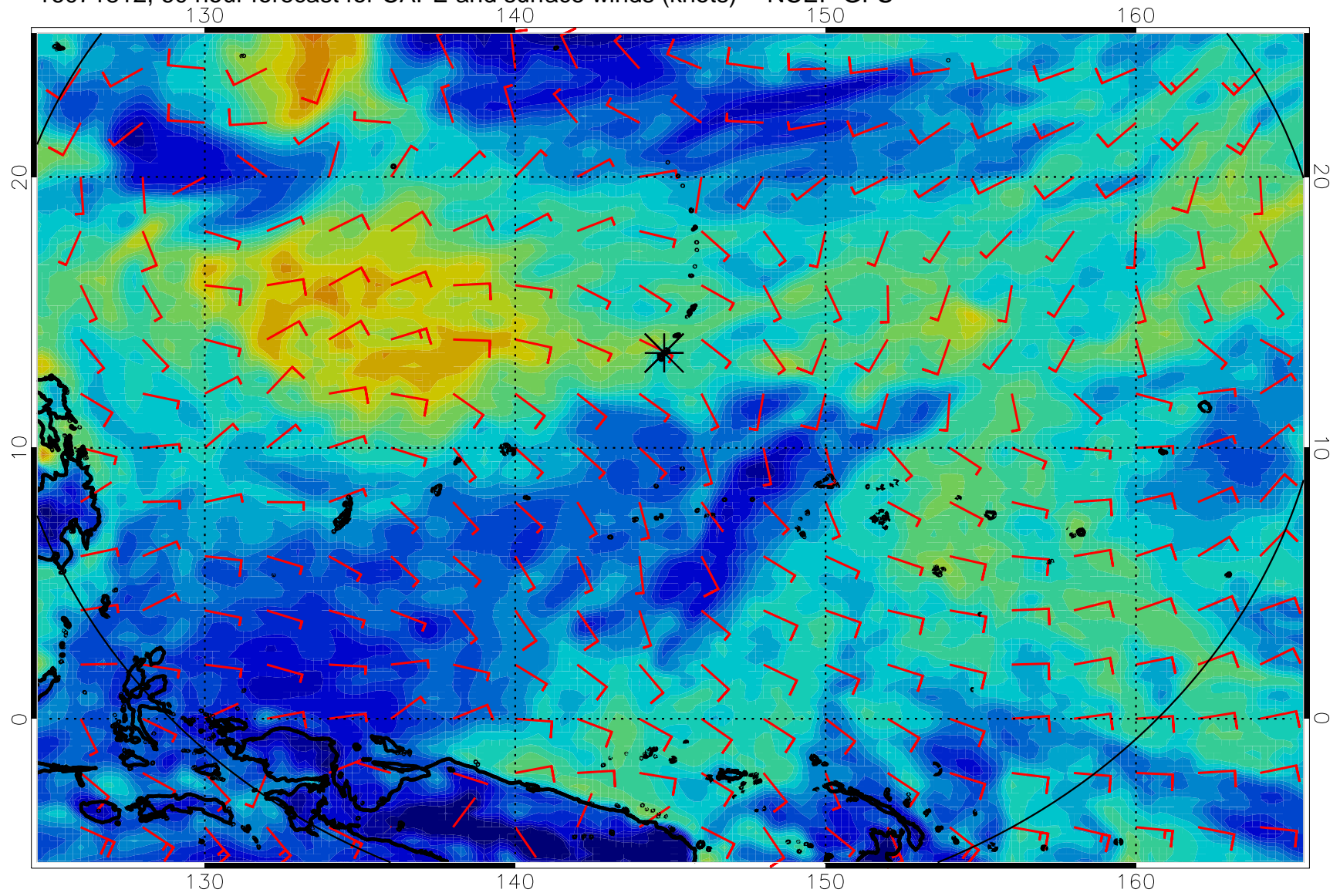




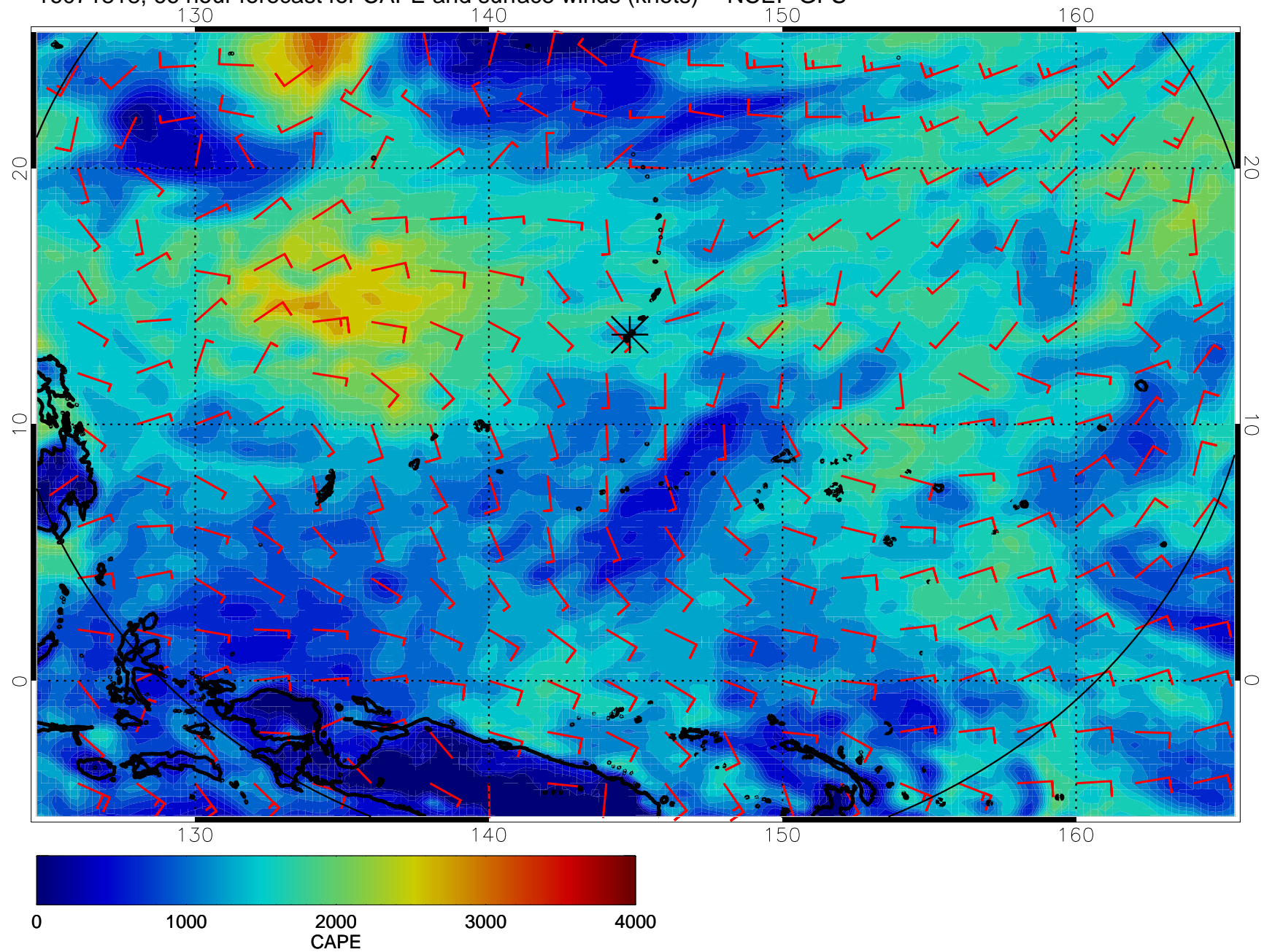
16071806, 54 hour forecast for CAPE and surface winds (knots) -- NCEP GFS



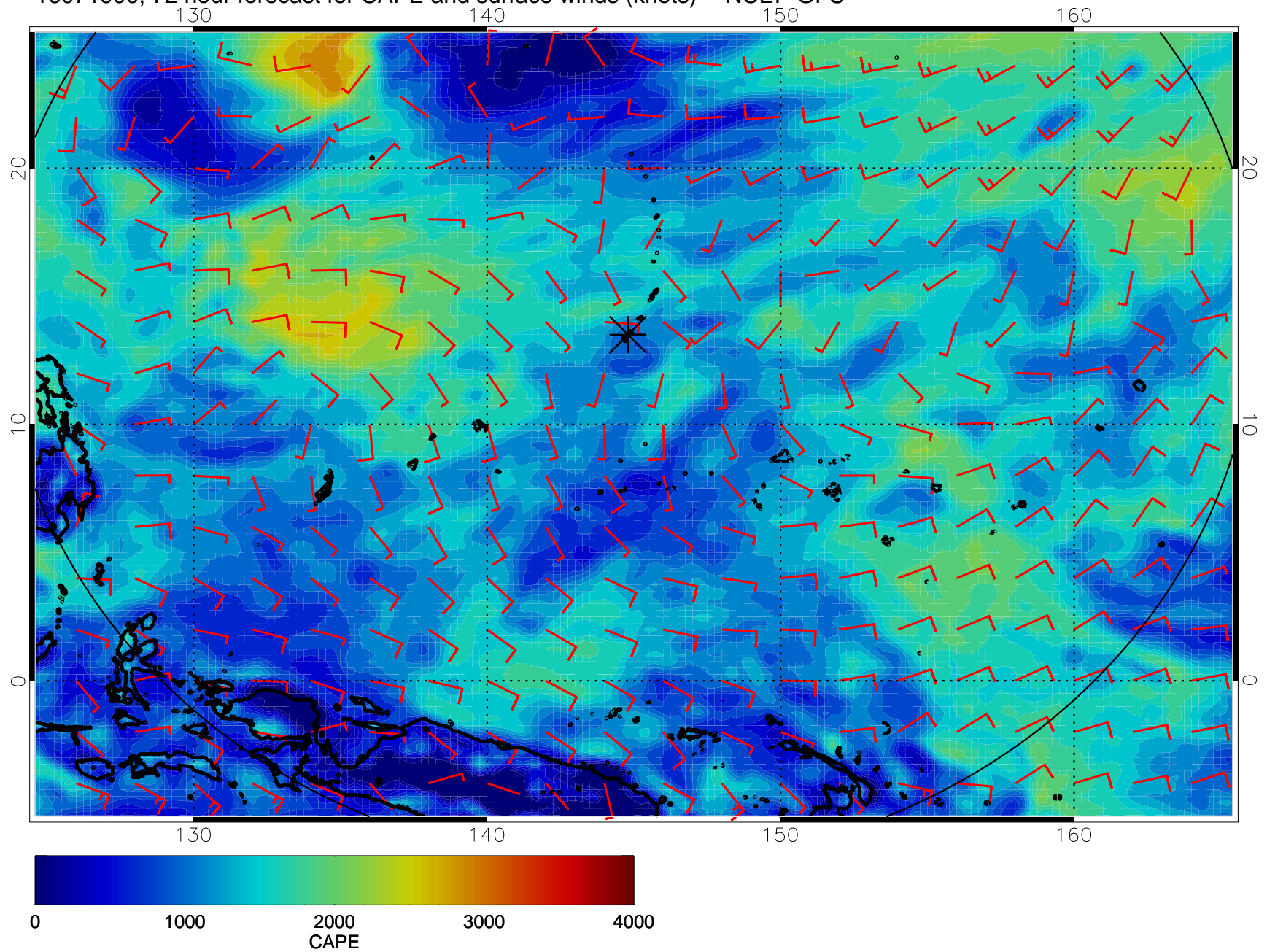
16071812, 60 hour forecast for CAPE and surface winds (knots) -- NCEP GFS



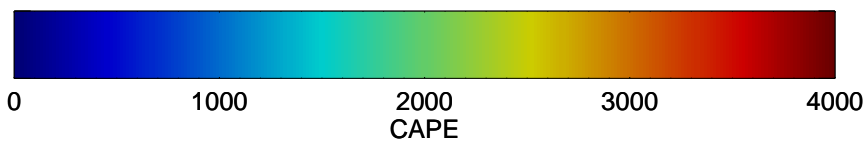
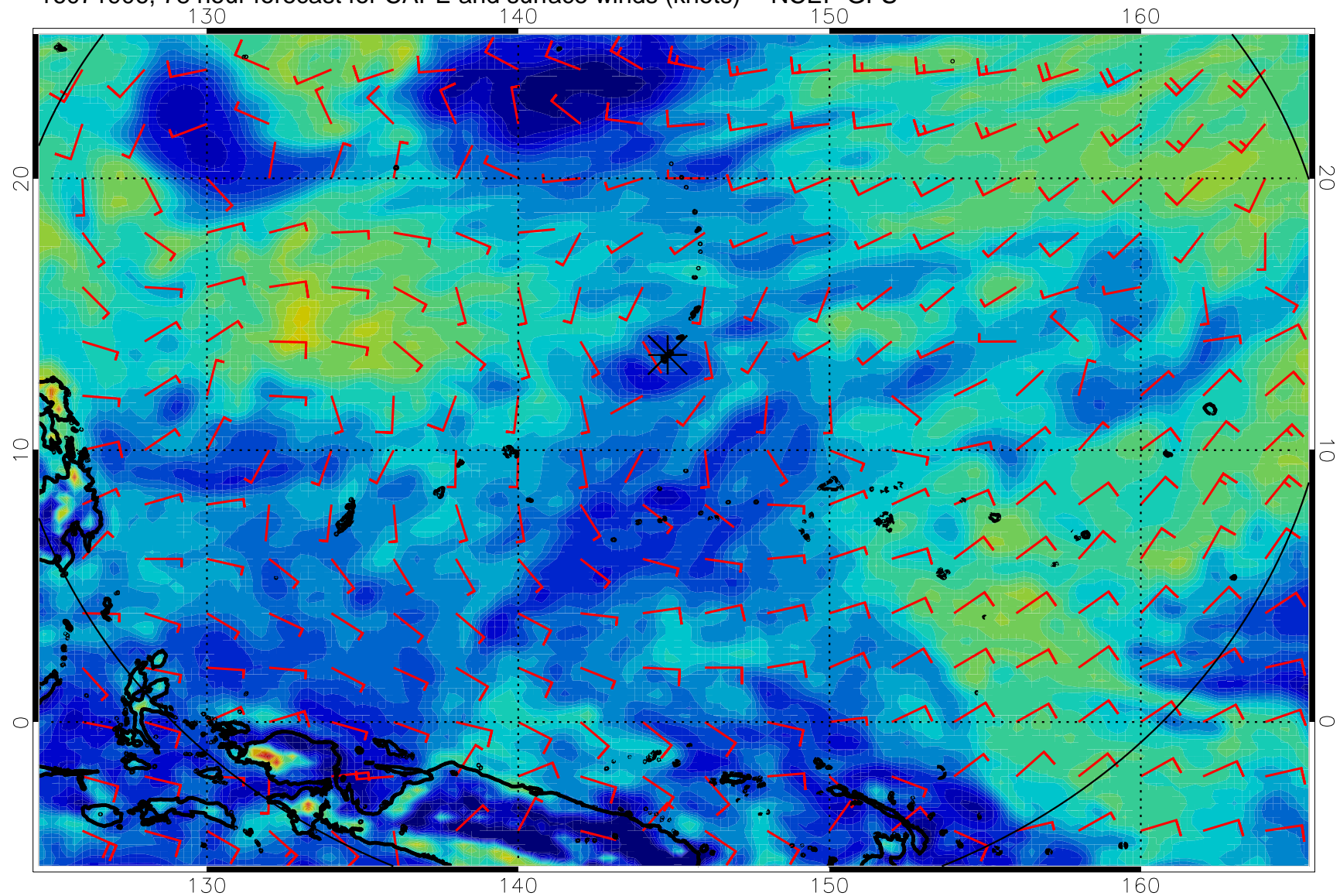
16071818, 66 hour forecast for CAPE and surface winds (knots) -- NCEP GFS



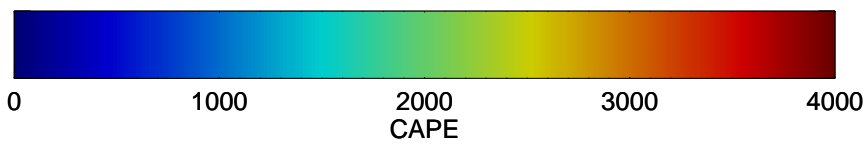
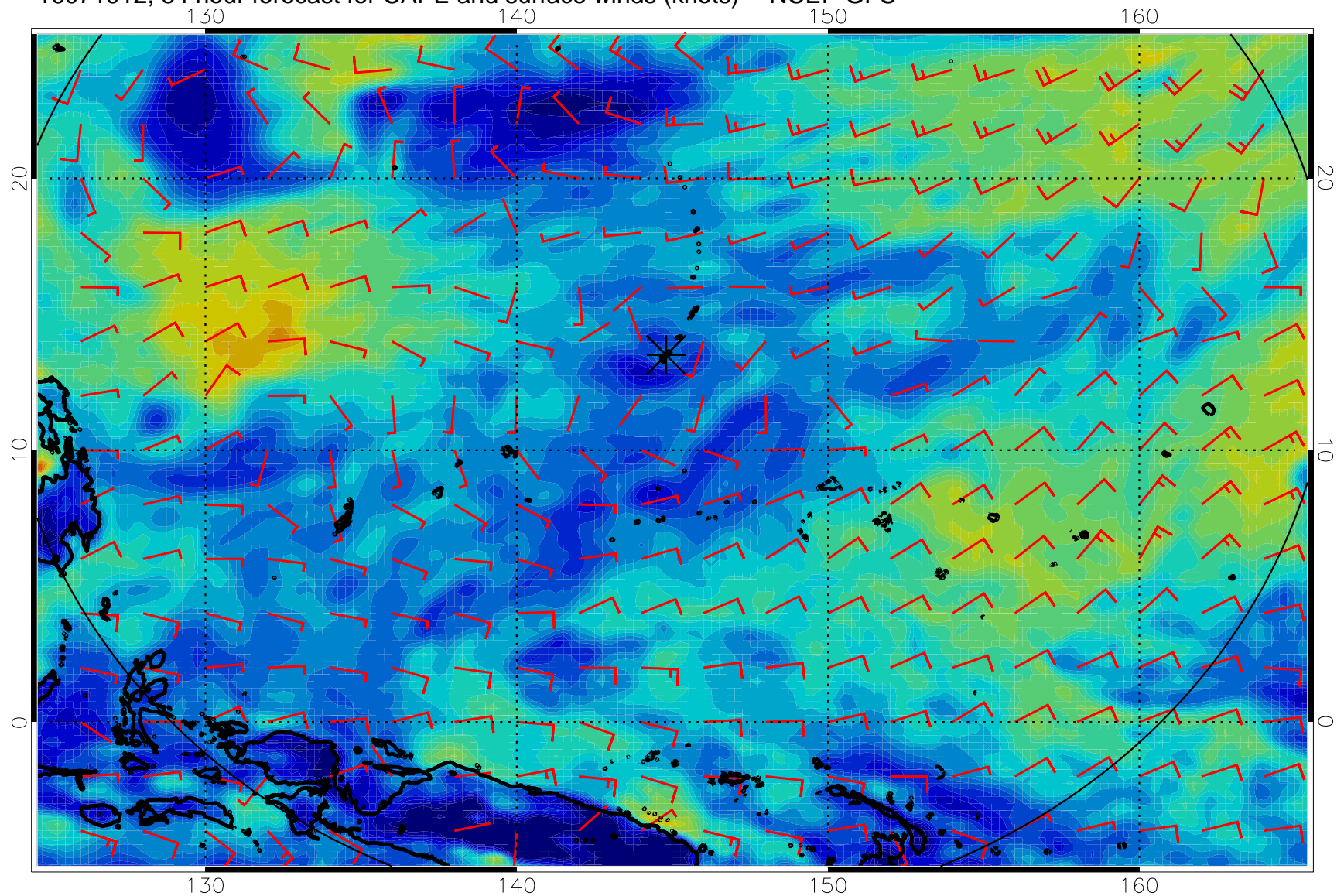
16071900, 72 hour forecast for CAPE and surface winds (knots) -- NCEP GFS



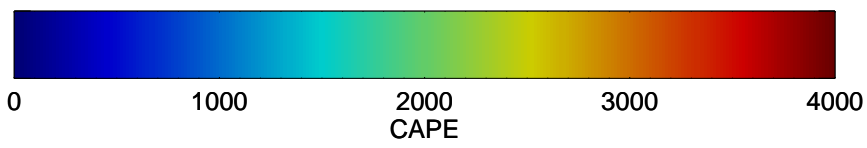
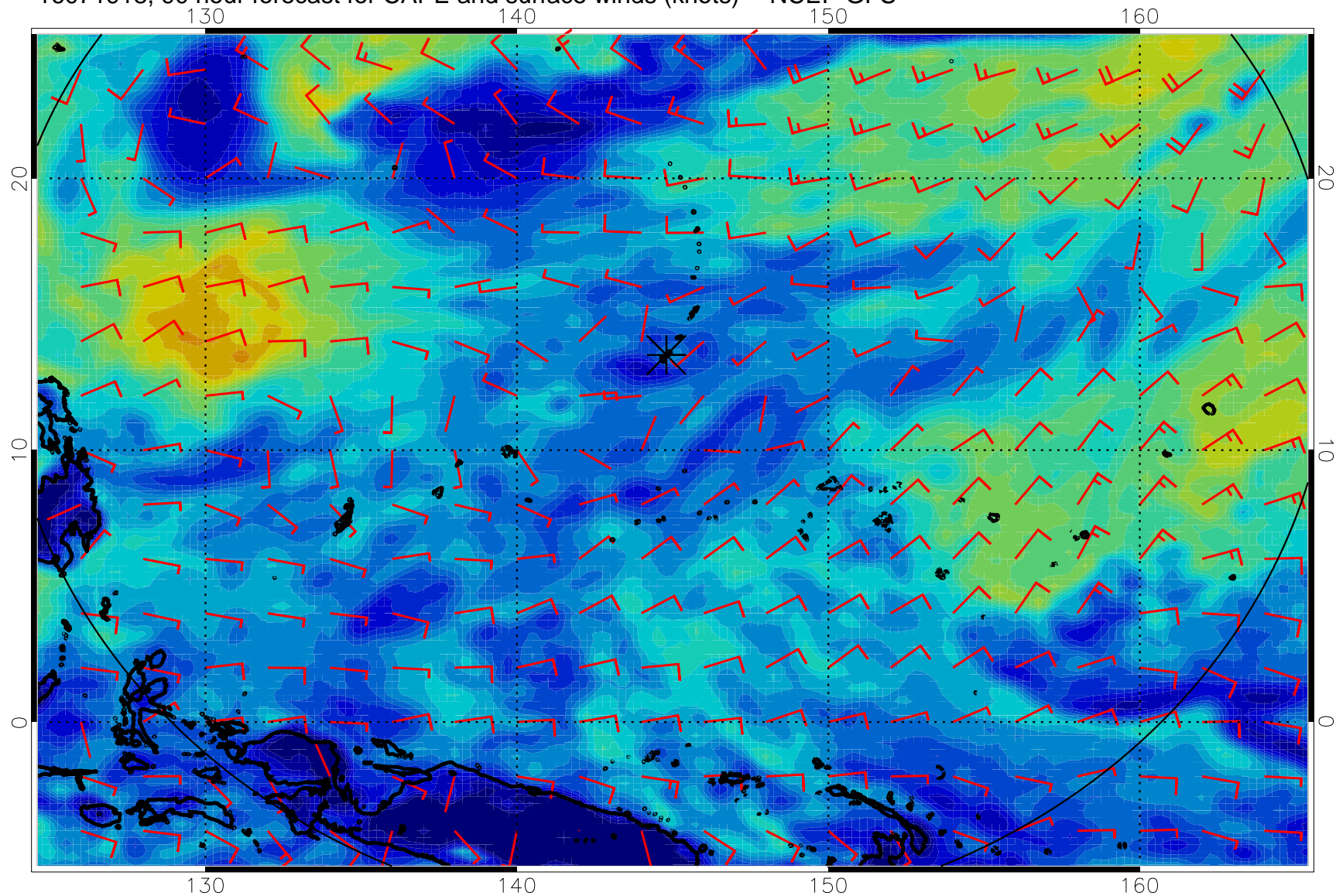
16071906, 78 hour forecast for CAPE and surface winds (knots) -- NCEP GFS



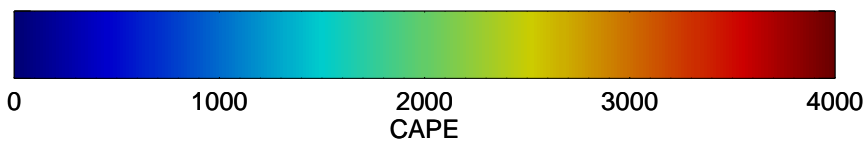
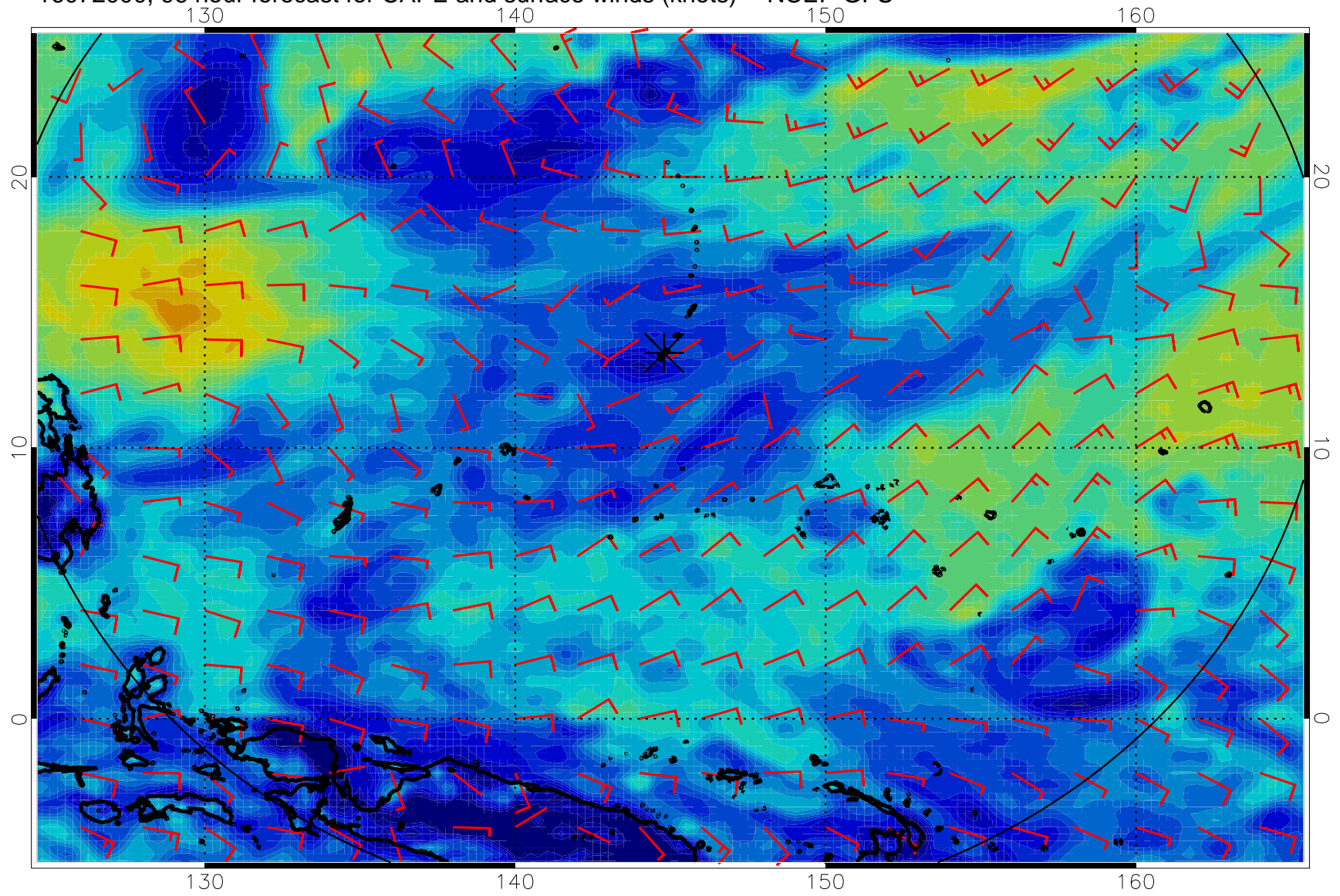
16071912, 84 hour forecast for CAPE and surface winds (knots) -- NCEP GFS



16071918, 90 hour forecast for CAPE and surface winds (knots) -- NCEP GFS

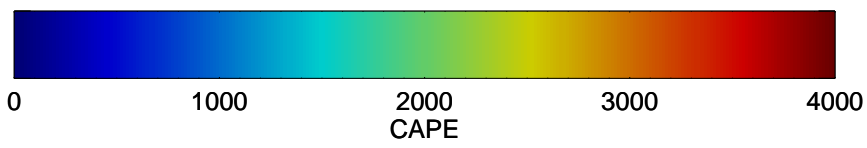
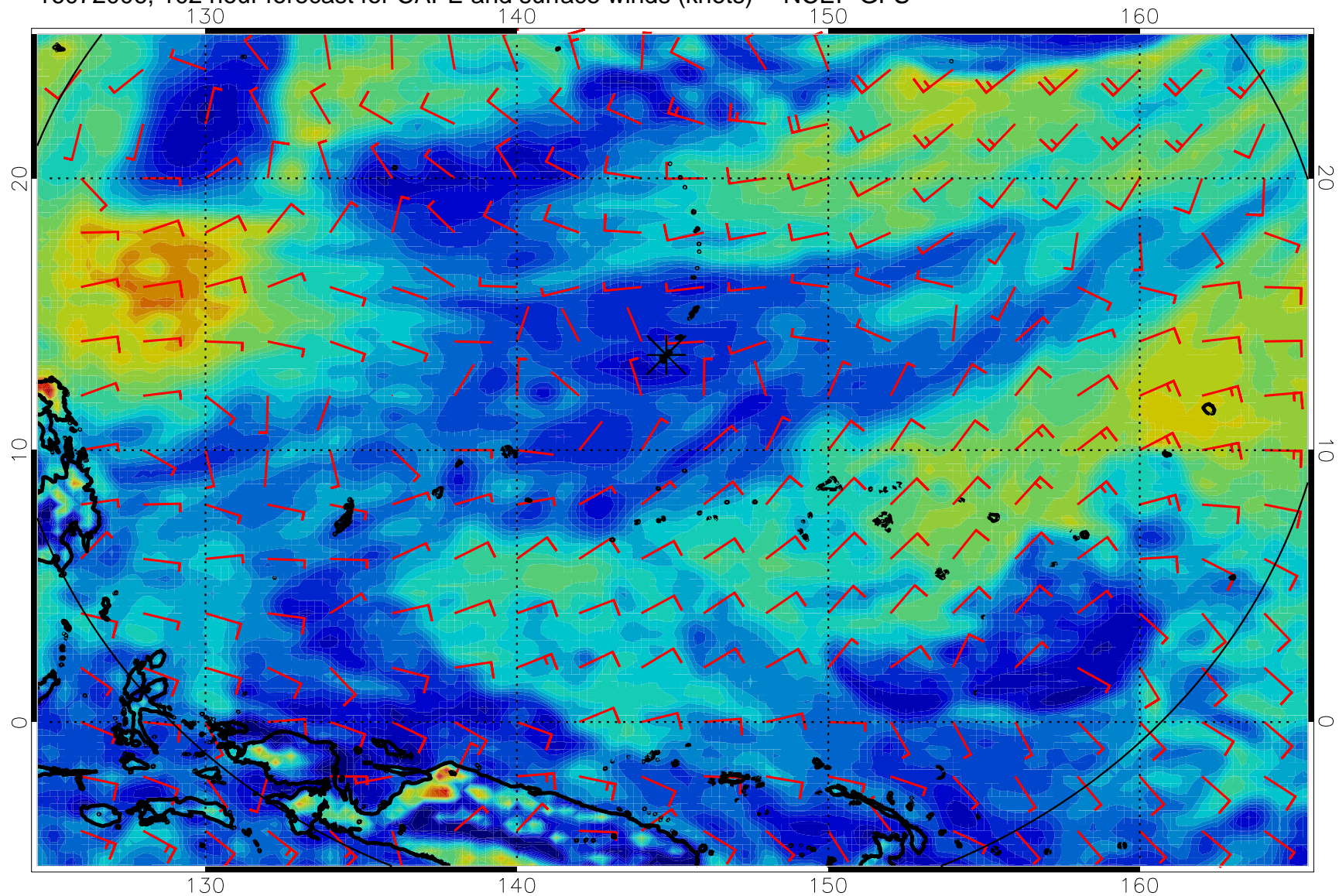


16072000, 96 hour forecast for CAPE and surface winds (knots) -- NCEP GFS

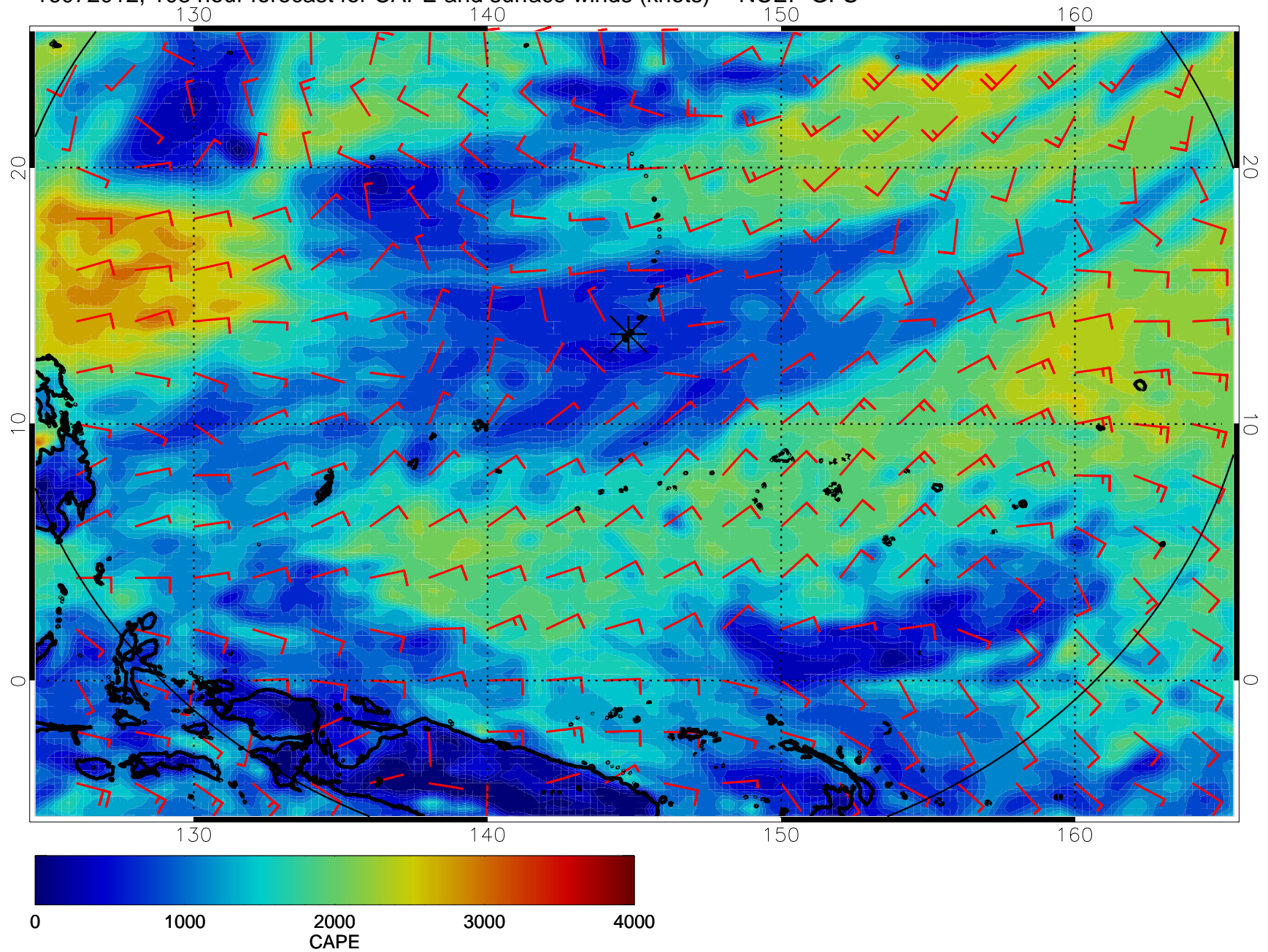




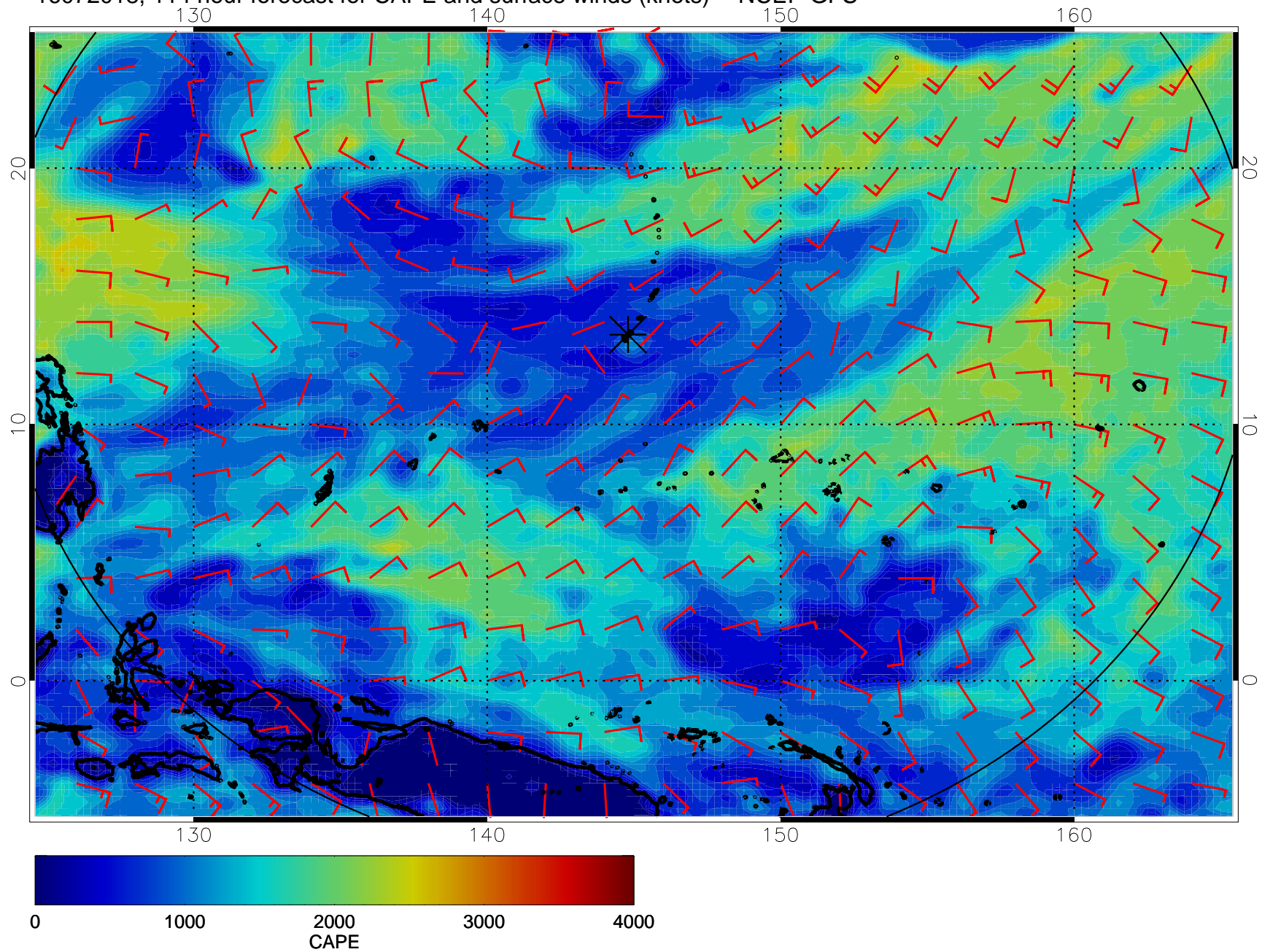
16072006, 102 hour forecast for CAPE and surface winds (knots) -- NCEP GFS



16072012, 108 hour forecast for CAPE and surface winds (knots) -- NCEP GFS



16072018, 114 hour forecast for CAPE and surface winds (knots) -- NCEP GFS



16072100, 120 hour forecast for CAPE and surface winds (knots) -- NCEP GFS

