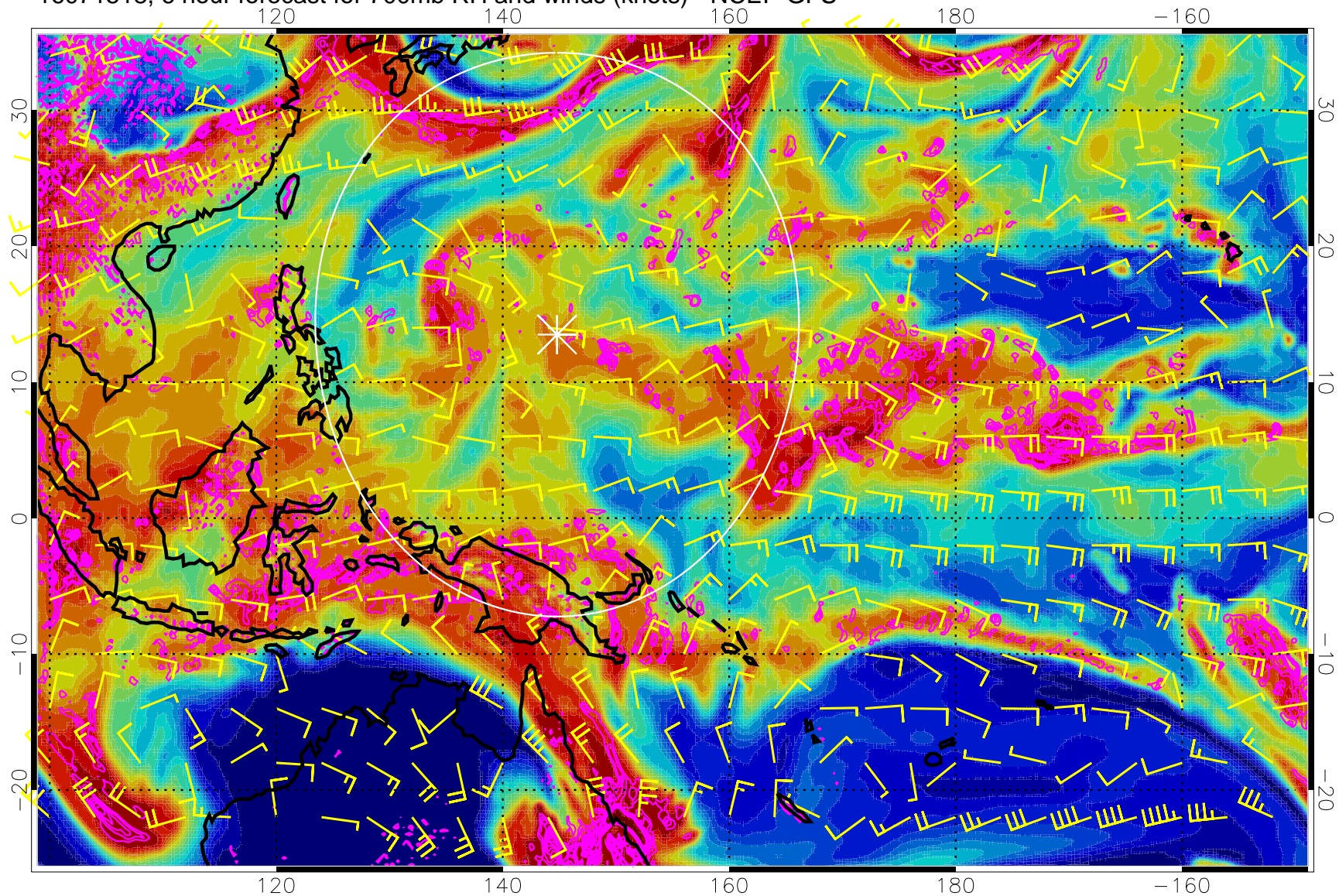


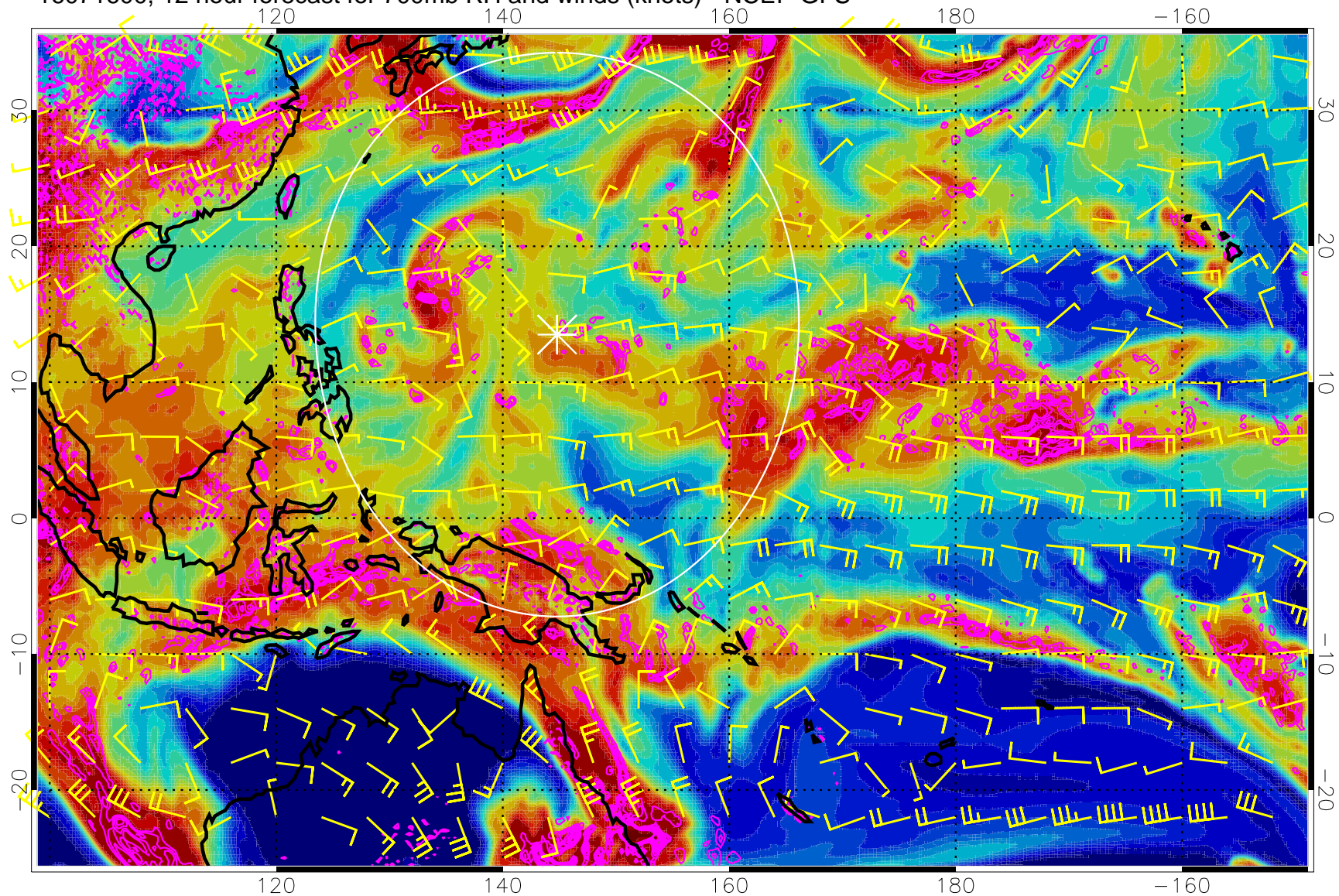
16071518, 6 hour forecast for 700mb RH and winds (knots) - NCEP GFS



Negative Omegas less than -0.3 , contours of 0.3 Pa/s

Range ring of 2304 km

16071600, 12 hour forecast for 700mb RH and winds (knots) - NCEP GFS

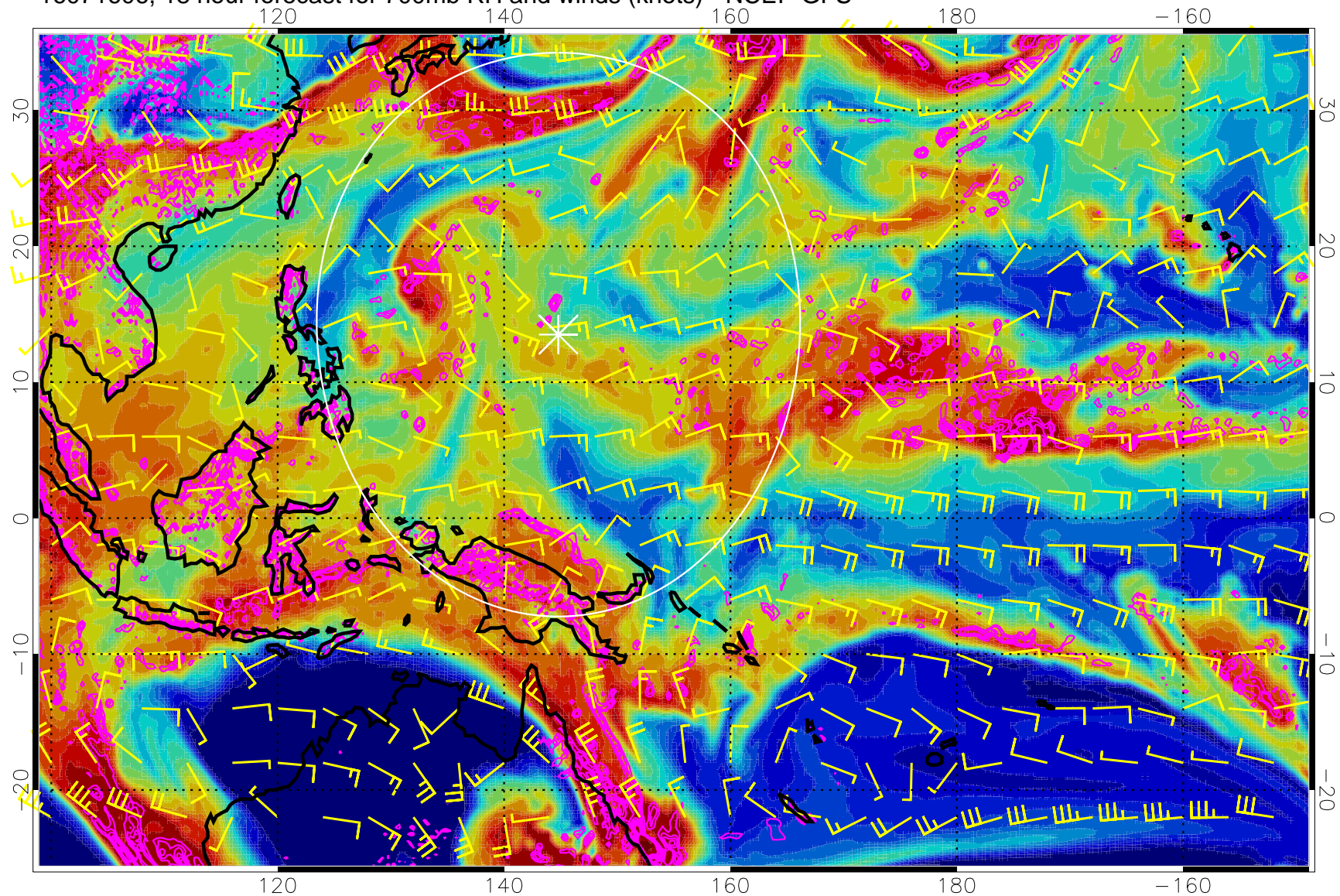


0 20 40 60 80 100
RH, %

Negative Omegas less than -0.3 , contours of 0.3 Pa/s

Range ring of 2304 km

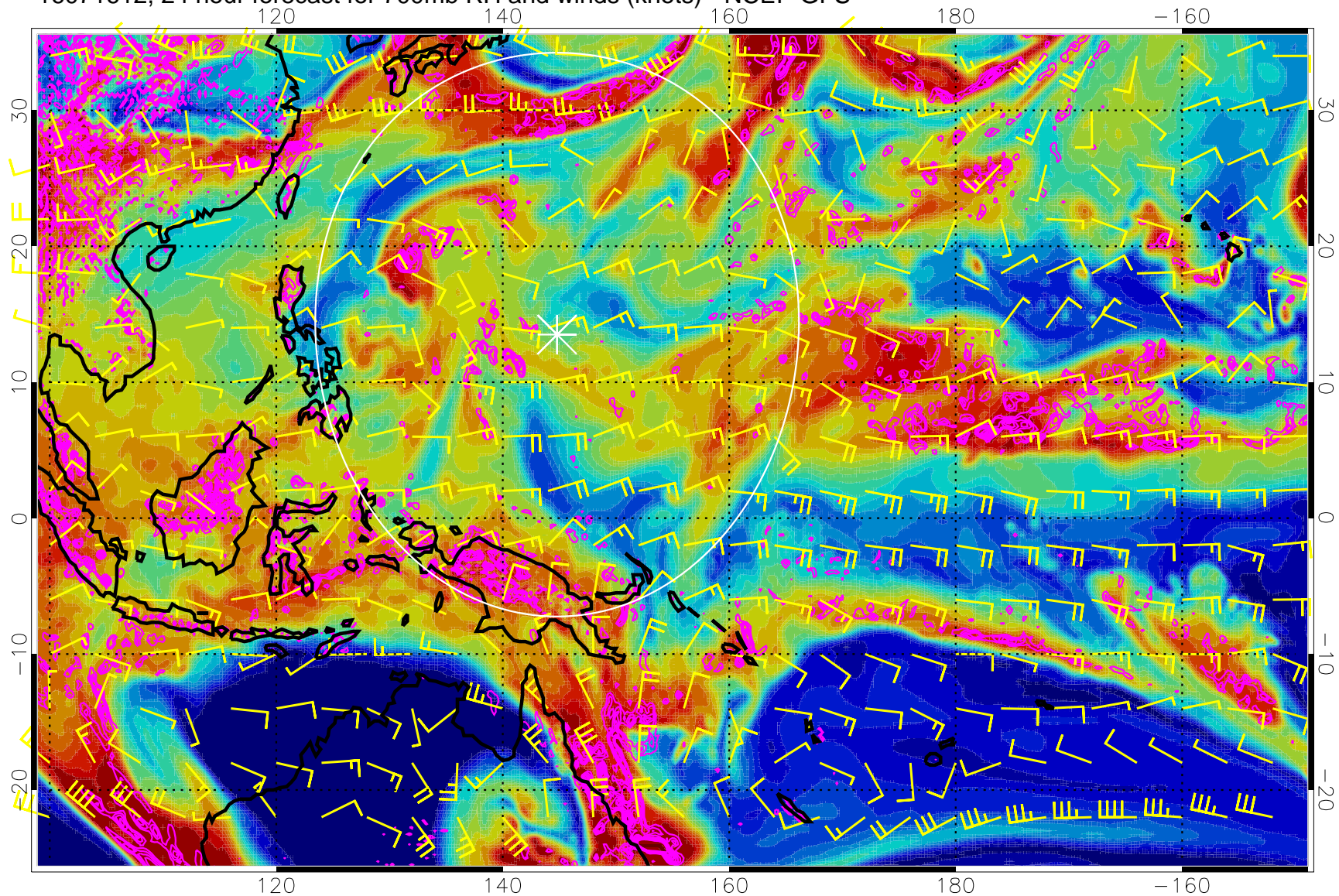
16071606, 18 hour forecast for 700mb RH and winds (knots) - NCEP GFS



Negative Omegas less than -0.3 , contours of 0.3 Pa/s

Range ring of 2304 km

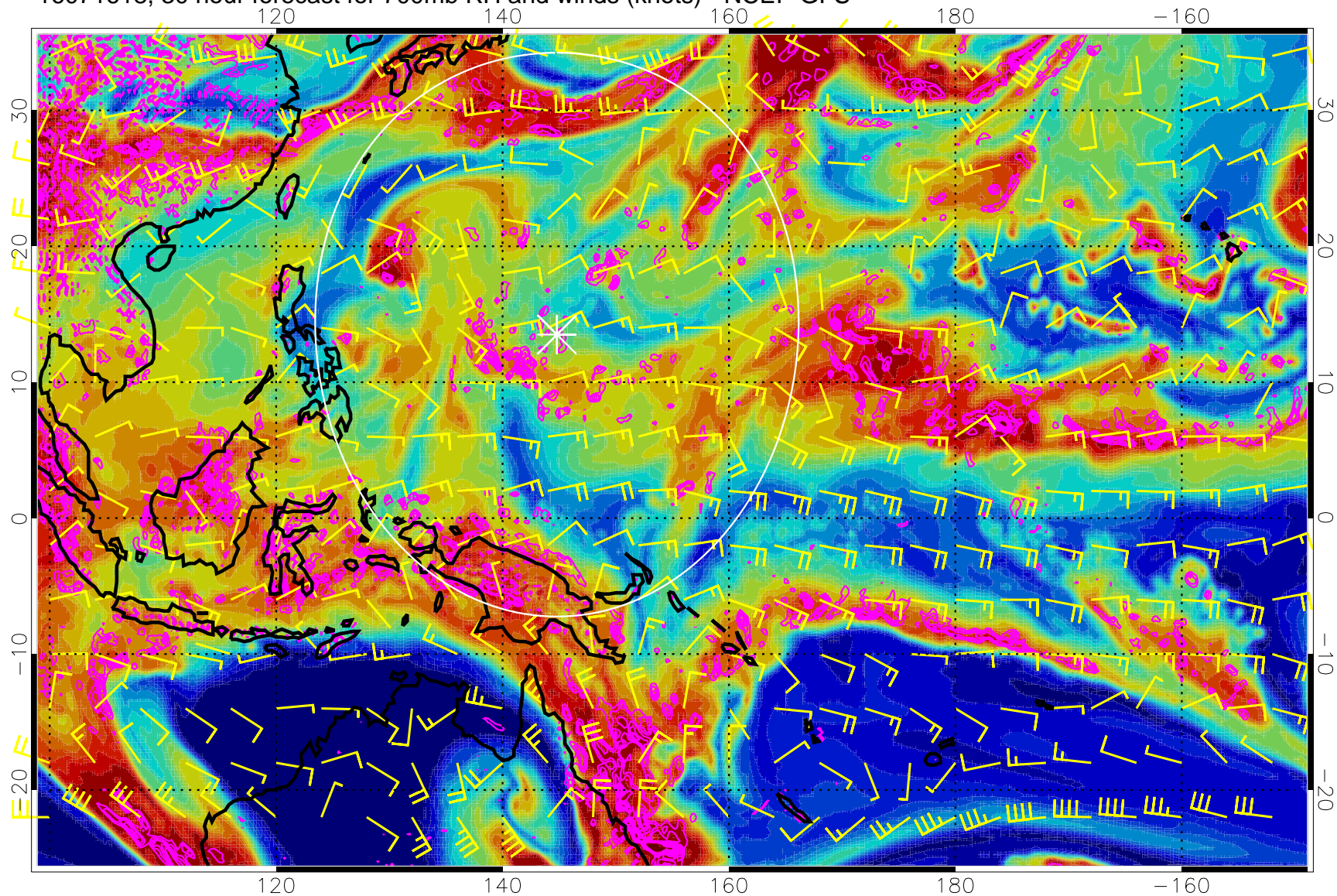
16071612, 24 hour forecast for 700mb RH and winds (knots) - NCEP GFS



Negative Omegas less than -0.3 , contours of 0.3 Pa/s

Range ring of 2304 km

16071618, 30 hour forecast for 700mb RH and winds (knots) - NCEP GFS

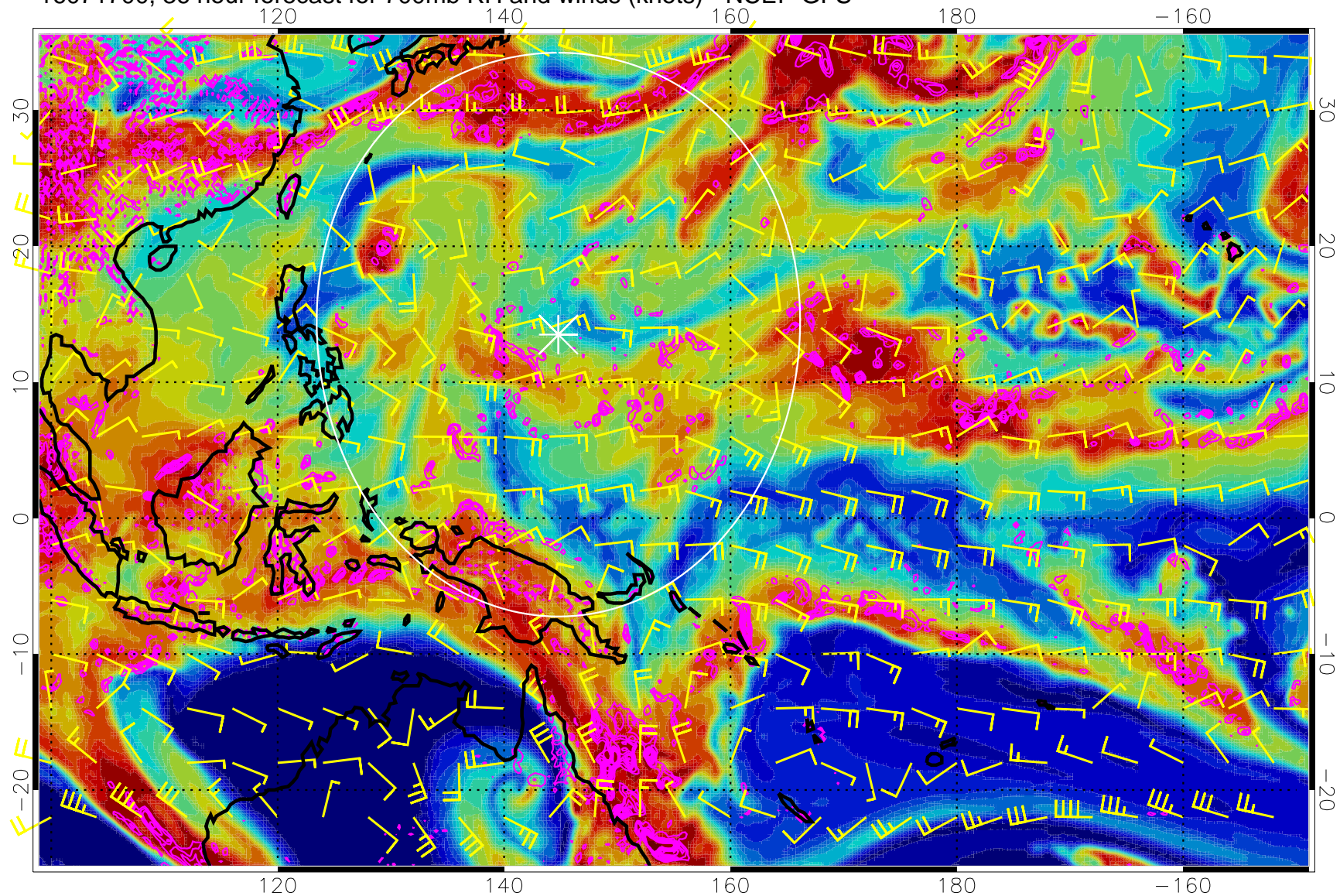


0 20 40 60 80 100
RH, %

Negative Omegas less than -0.3 , contours of 0.3 Pa/s

Range ring of 2304 km

16071700, 36 hour forecast for 700mb RH and winds (knots) - NCEP GFS

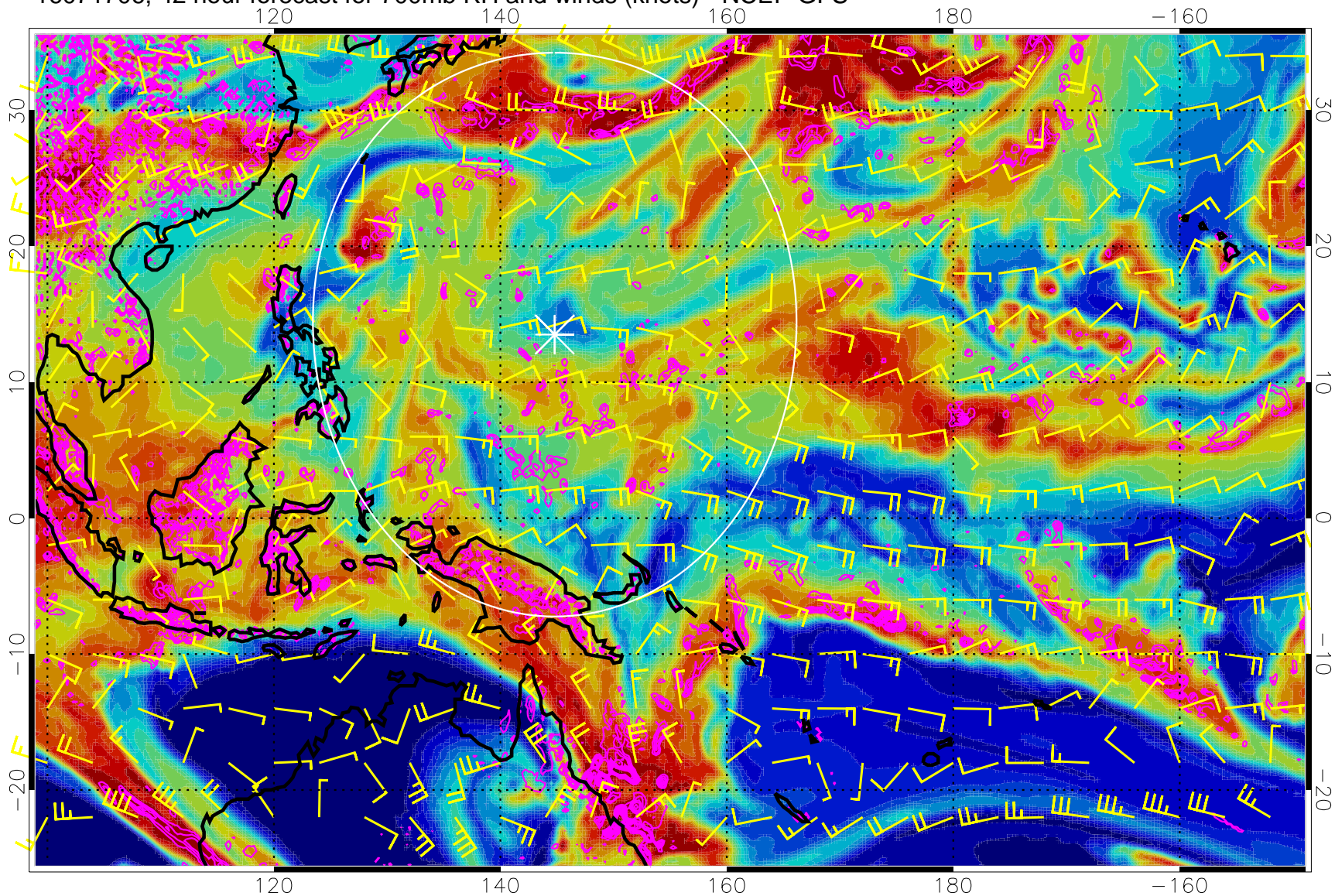


0 20 40 60 80 100
RH, %

Negative Omegas less than $-.3$, contours of $.3$ Pa/s

Range ring of 2304 km

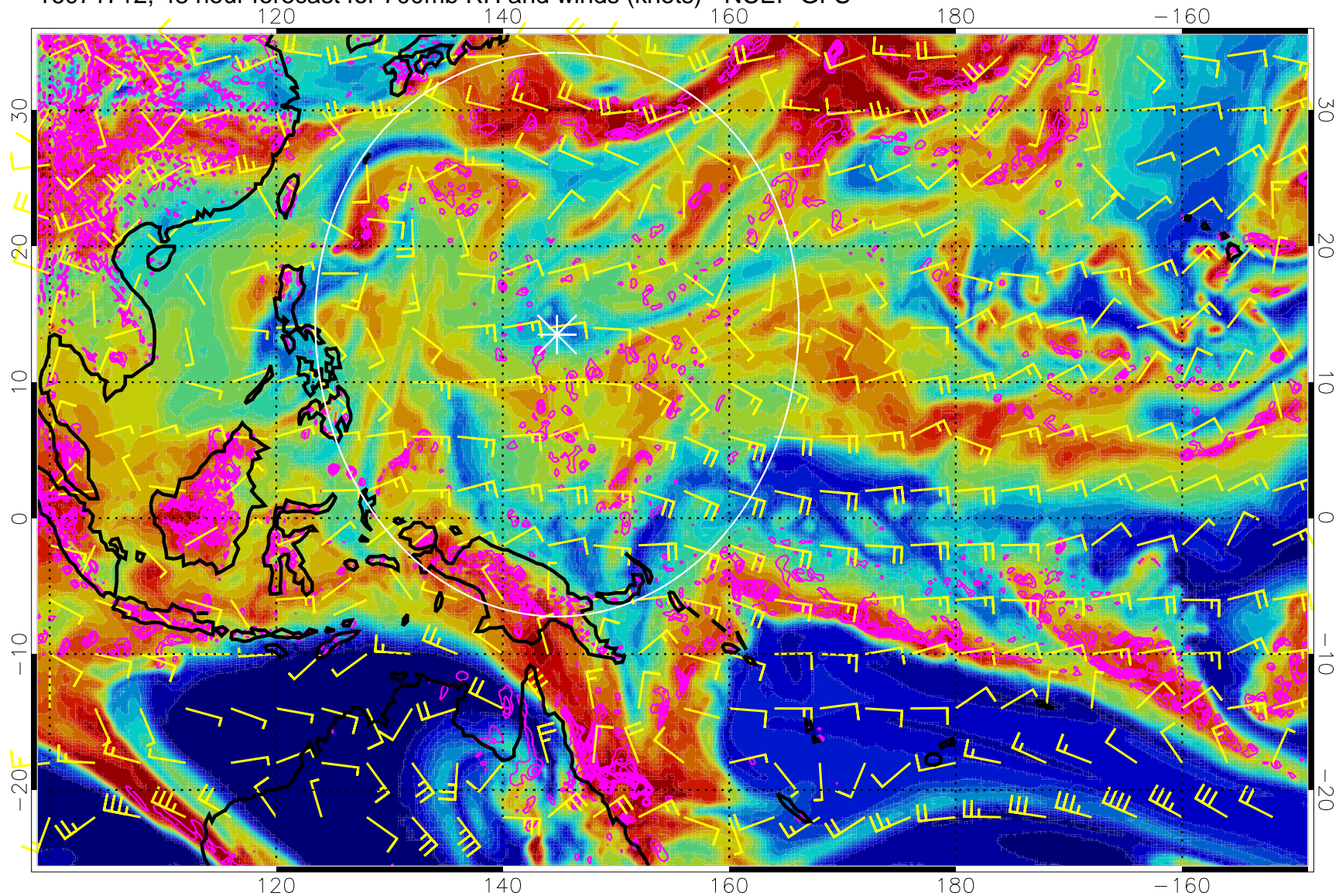
16071706, 42 hour forecast for 700mb RH and winds (knots) - NCEP GFS



Negative Omegas less than -0.3 , contours of 0.3 Pa/s

Range ring of 2304 km

16071712, 48 hour forecast for 700mb RH and winds (knots) - NCEP GFS

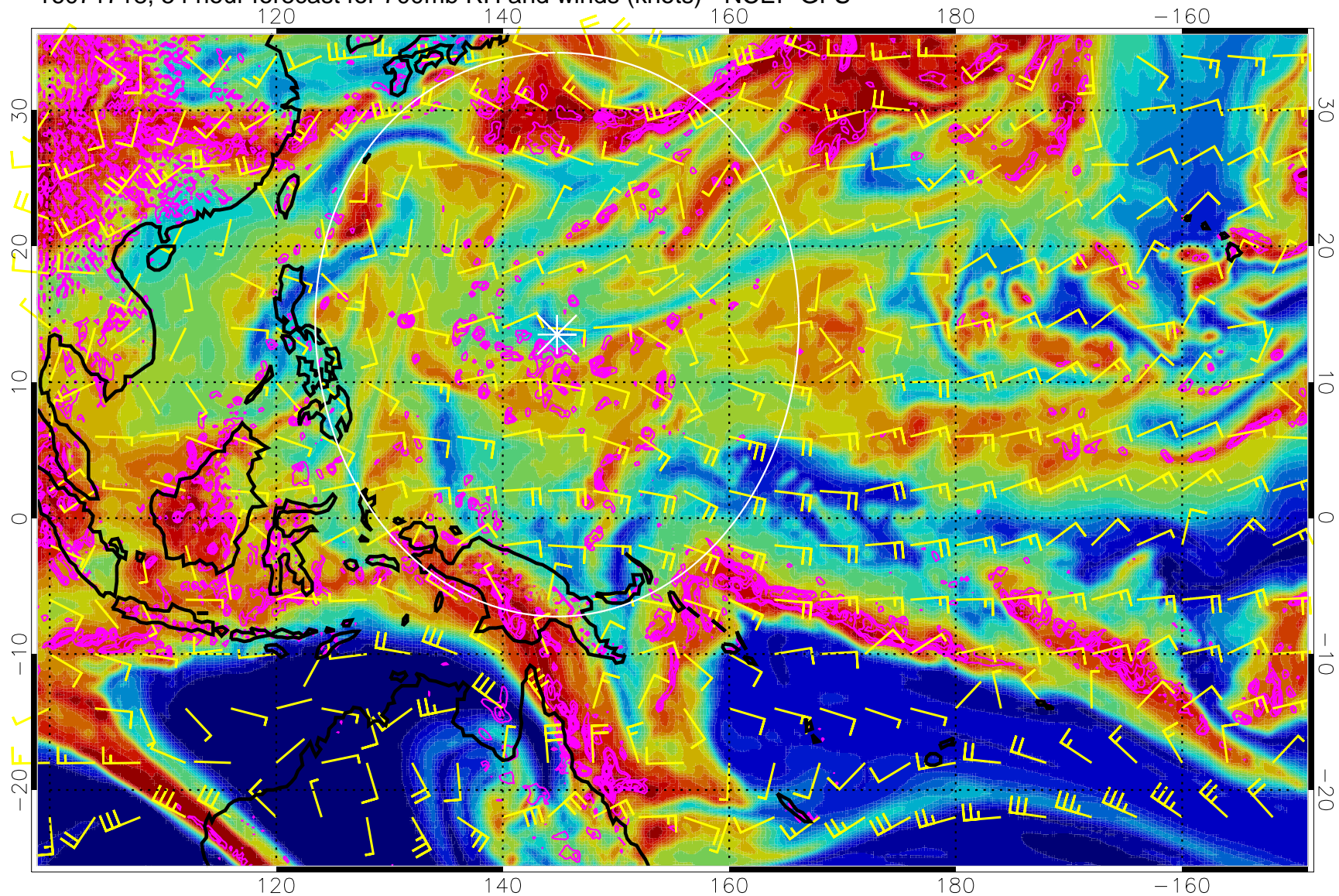


0 20 40 60 80 100
RH, %

Negative Omegas less than -0.3 , contours of 0.3 Pa/s

Range ring of 2304 km

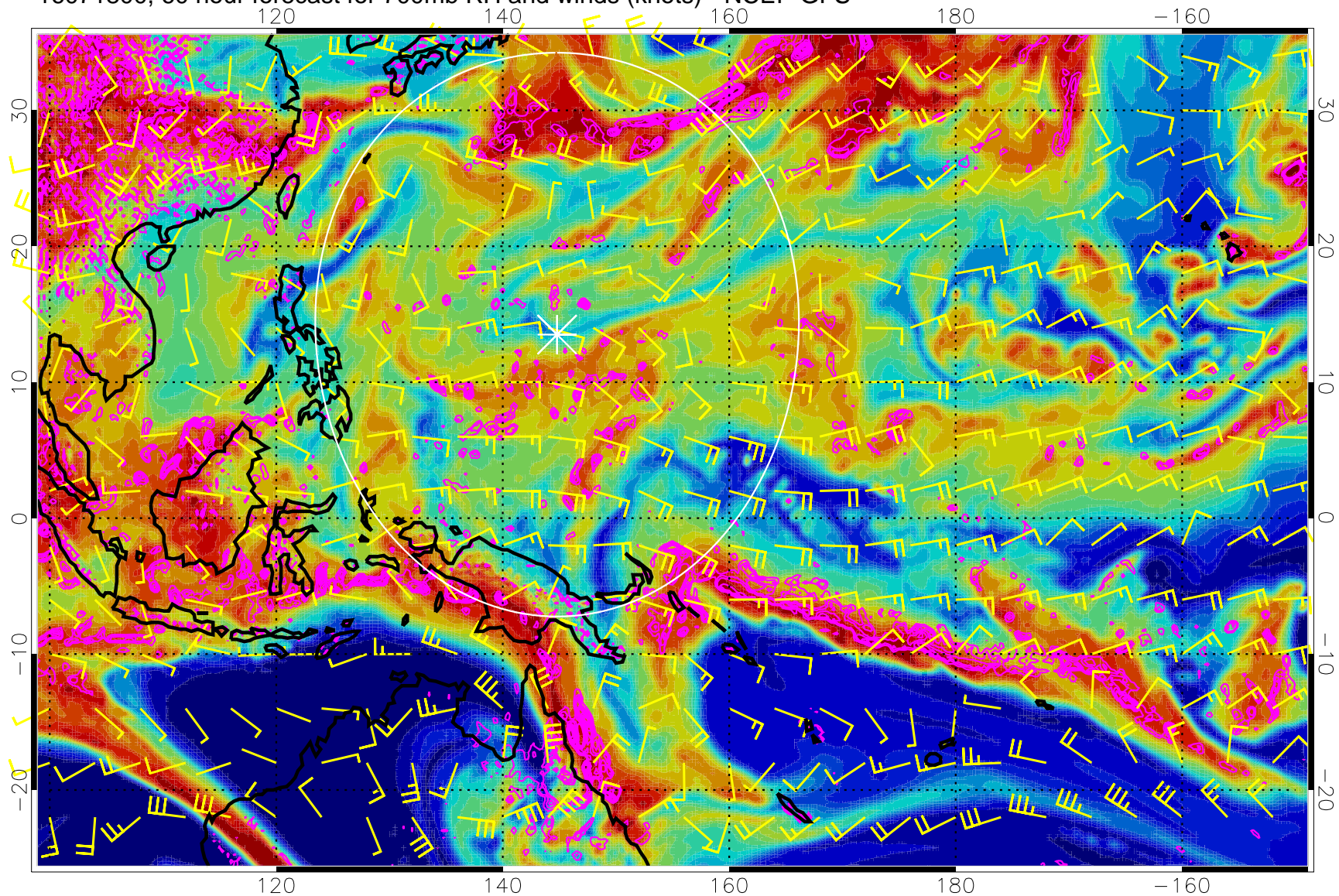
16071718, 54 hour forecast for 700mb RH and winds (knots) - NCEP GFS



Negative Omegas less than -0.3 , contours of 0.3 Pa/s

Range ring of 2304 km

16071800, 60 hour forecast for 700mb RH and winds (knots) - NCEP GFS

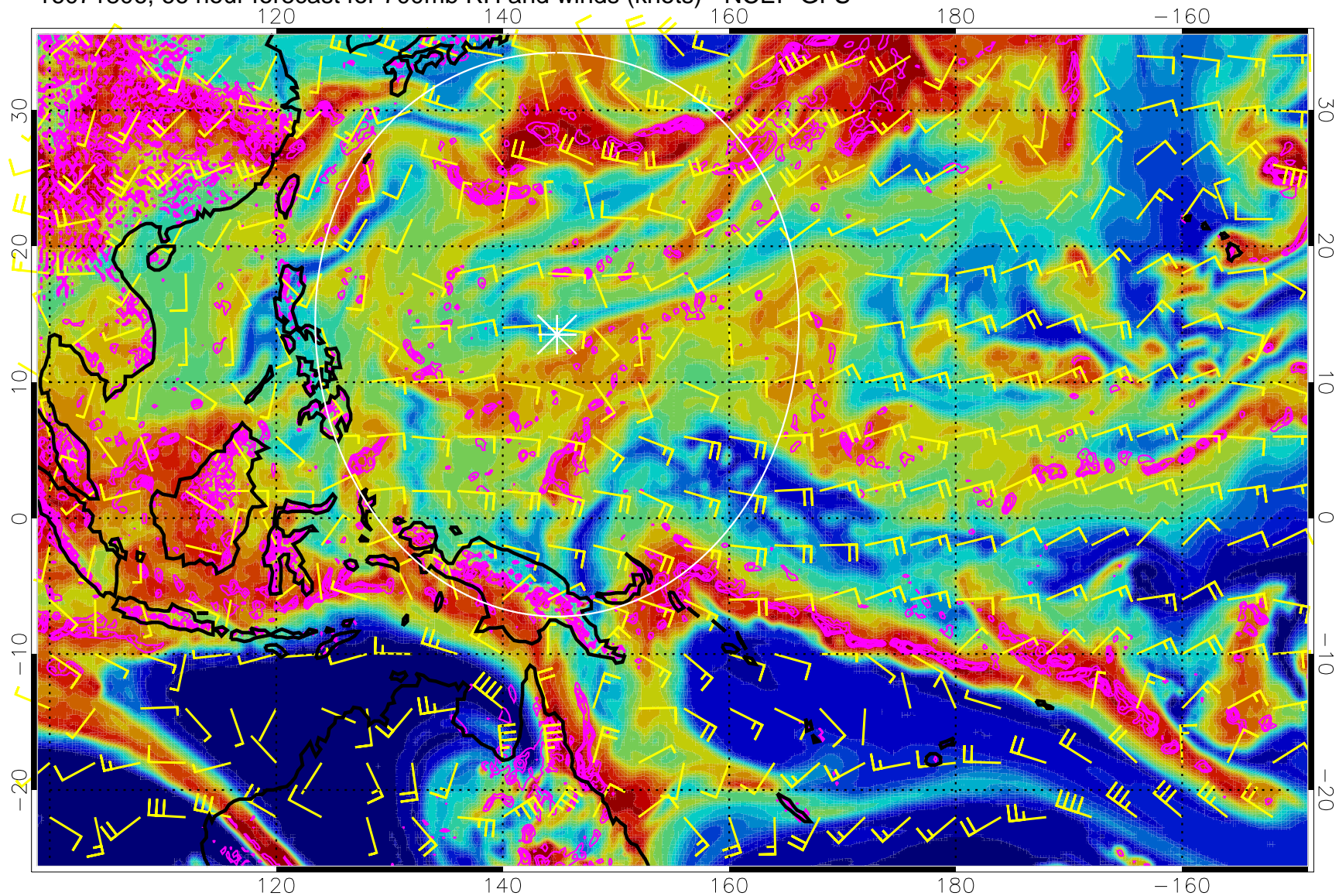


0 20 40 60 80 100
RH, %

Negative Omegas less than -0.3 , contours of 0.3 Pa/s

Range ring of 2304 km

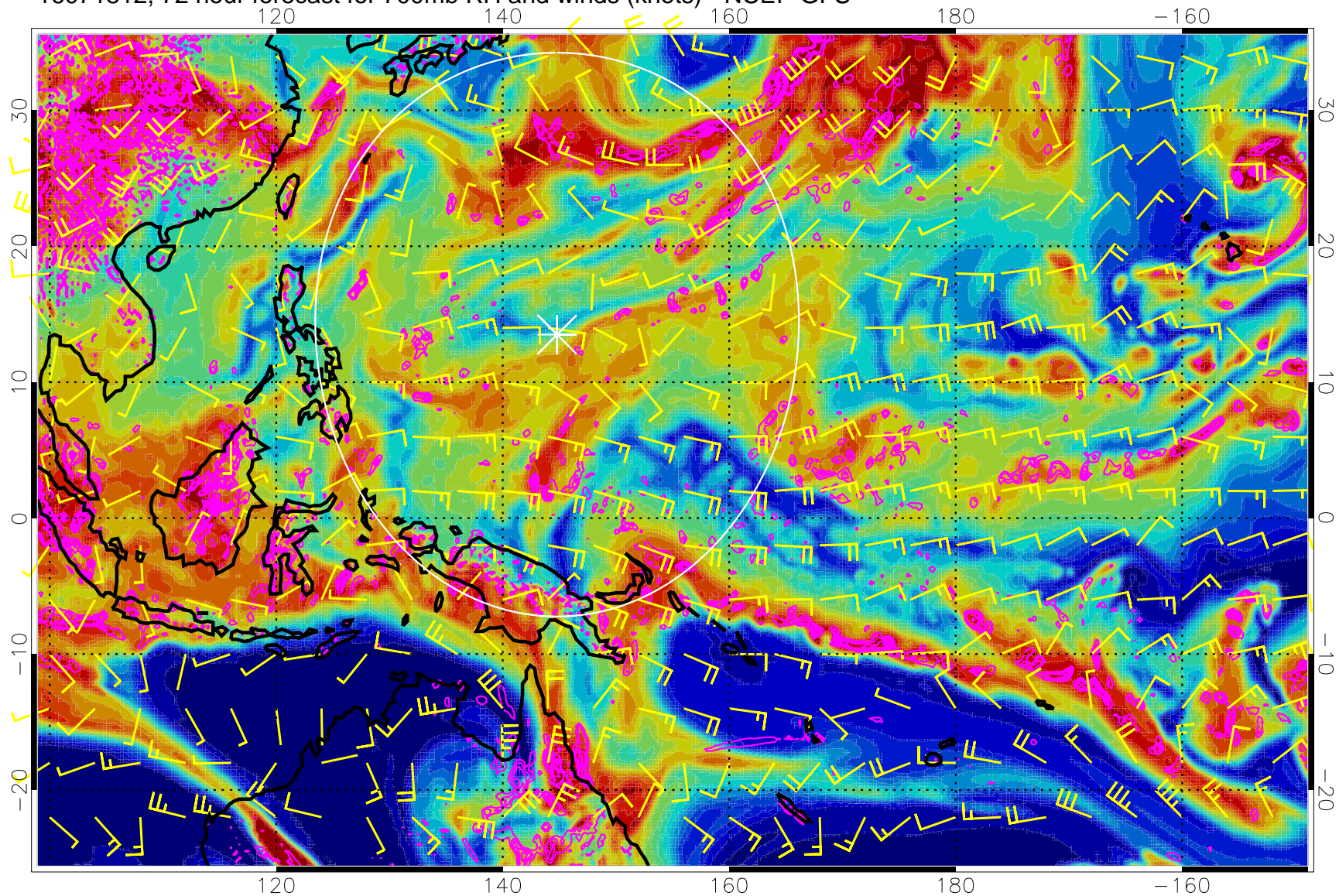
16071806, 66 hour forecast for 700mb RH and winds (knots) - NCEP GFS



Negative Omegas less than -0.3 , contours of 0.3 Pa/s

Range ring of 2304 km

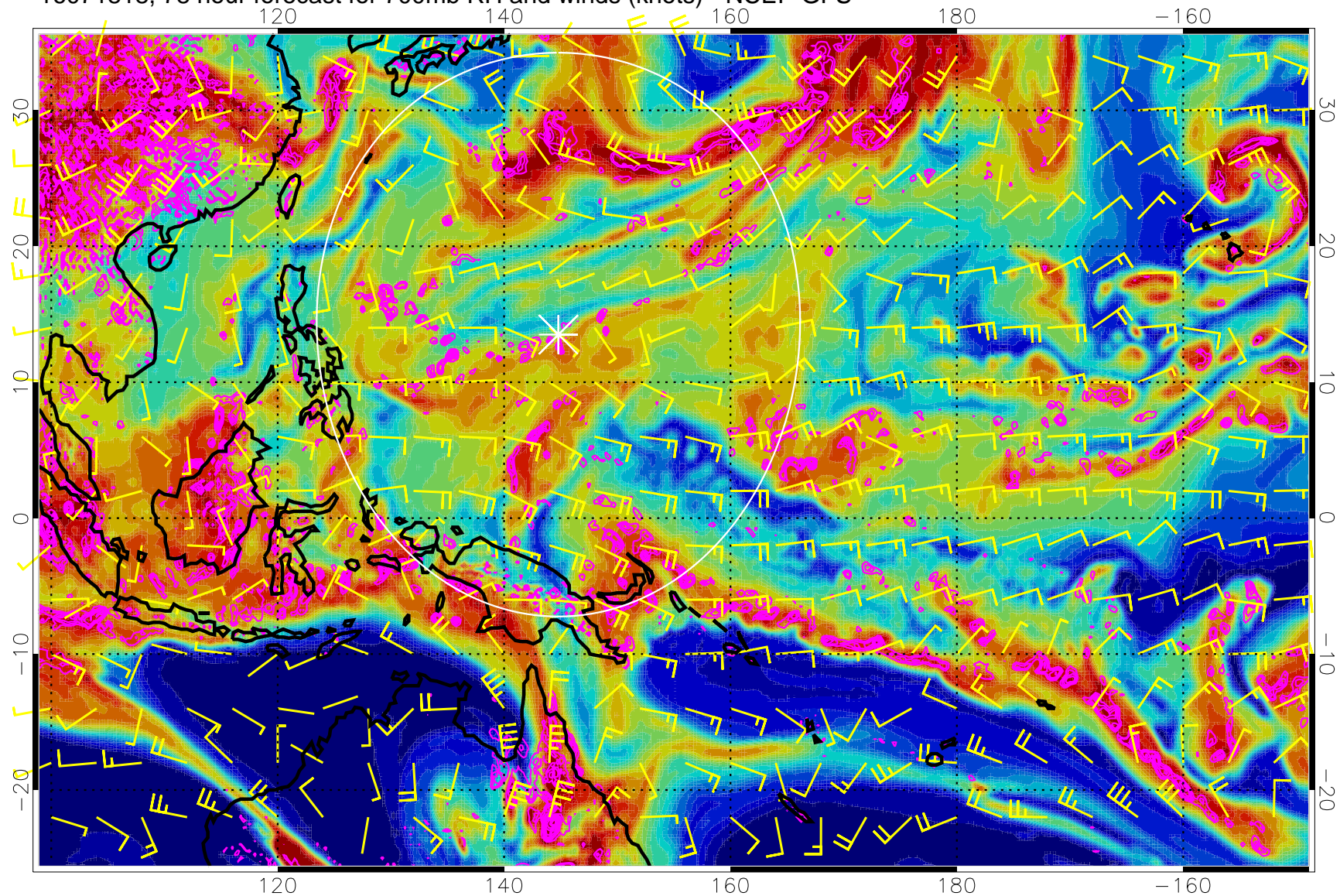
16071812, 72 hour forecast for 700mb RH and winds (knots) - NCEP GFS



Negative Omegas less than -0.3 , contours of 0.3 Pa/s

Range ring of 2304 km

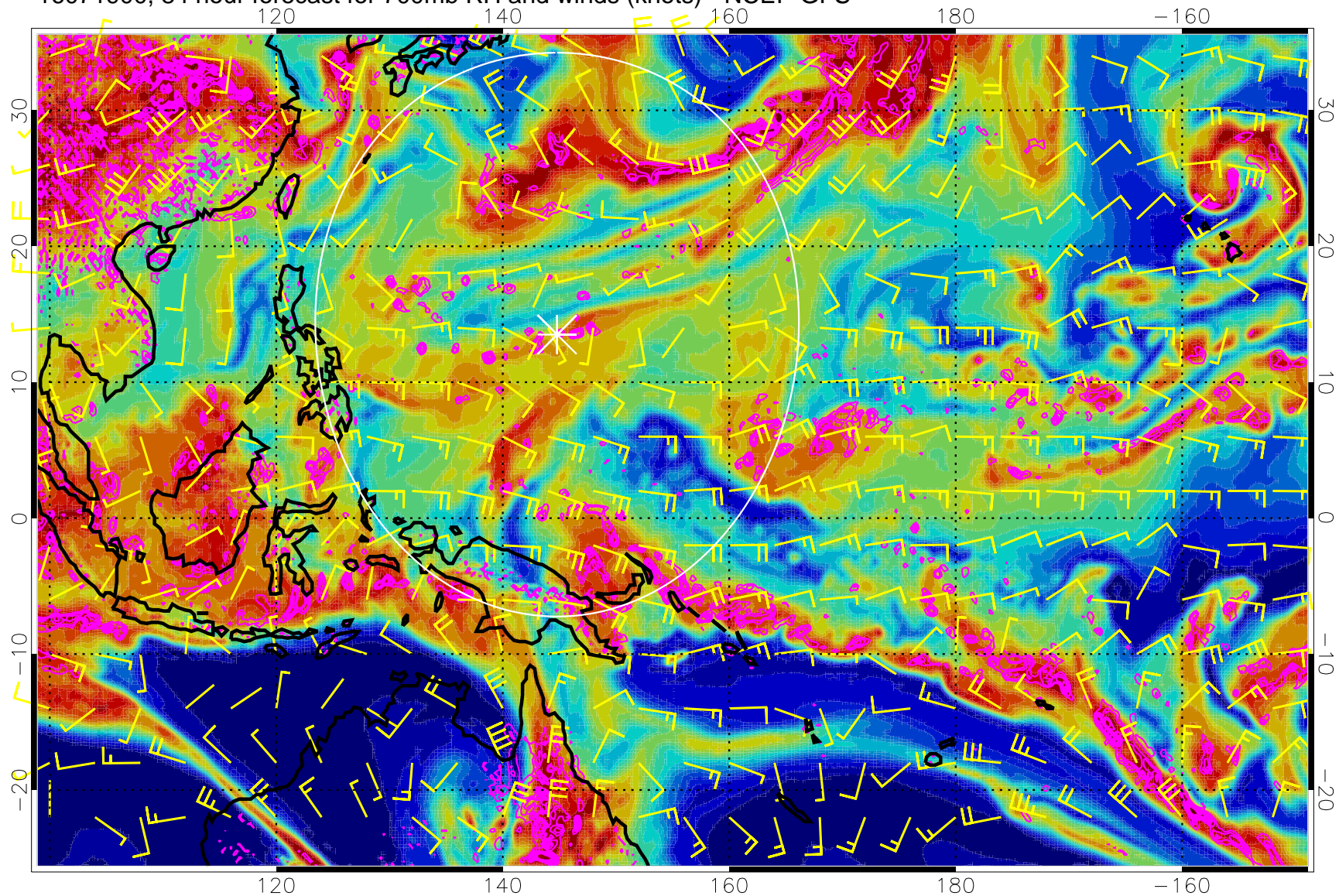
16071818, 78 hour forecast for 700mb RH and winds (knots) - NCEP GFS



Negative Omegas less than -0.3 , contours of 0.3 Pa/s

Range ring of 2304 km

16071900, 84 hour forecast for 700mb RH and winds (knots) - NCEP GFS



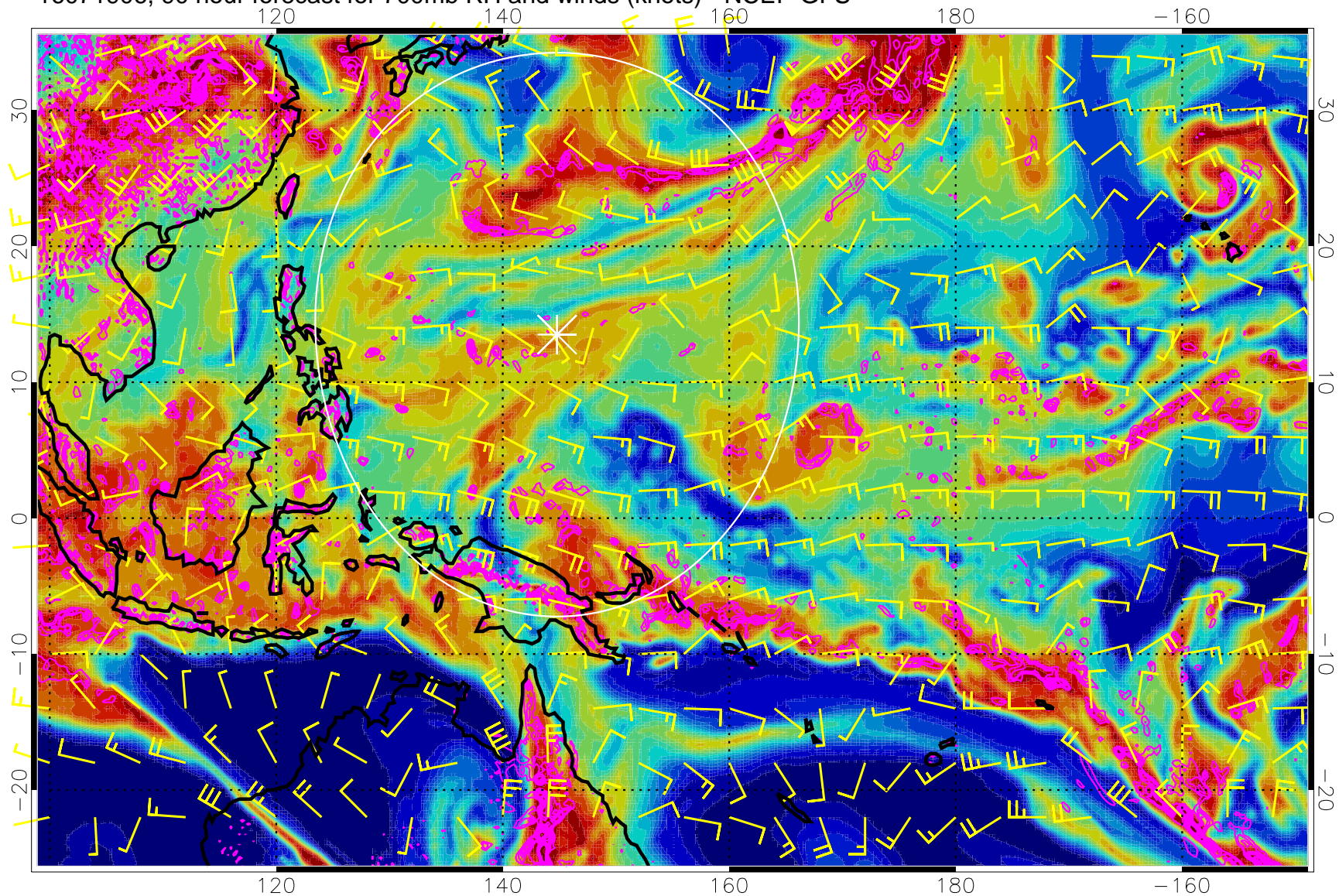
Negative Omegas less than -0.3 , contours of 0.3 Pa/s



0 20 40 60 80 100
RH, %

Range ring of 2304 km

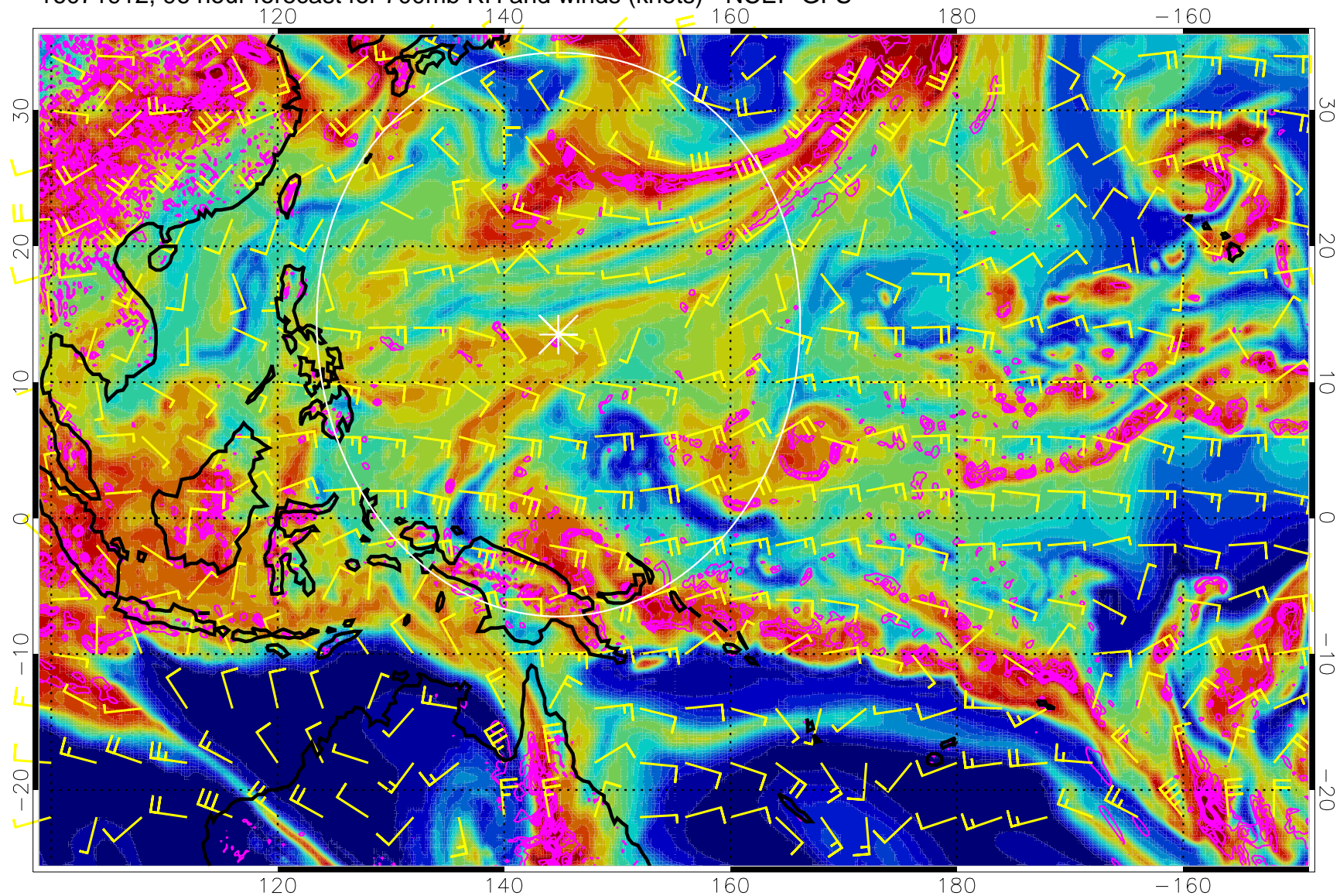
16071906, 90 hour forecast for 700mb RH and winds (knots) - NCEP GFS



Negative Omegas less than -0.3 , contours of 0.3 Pa/s

Range ring of 2304 km

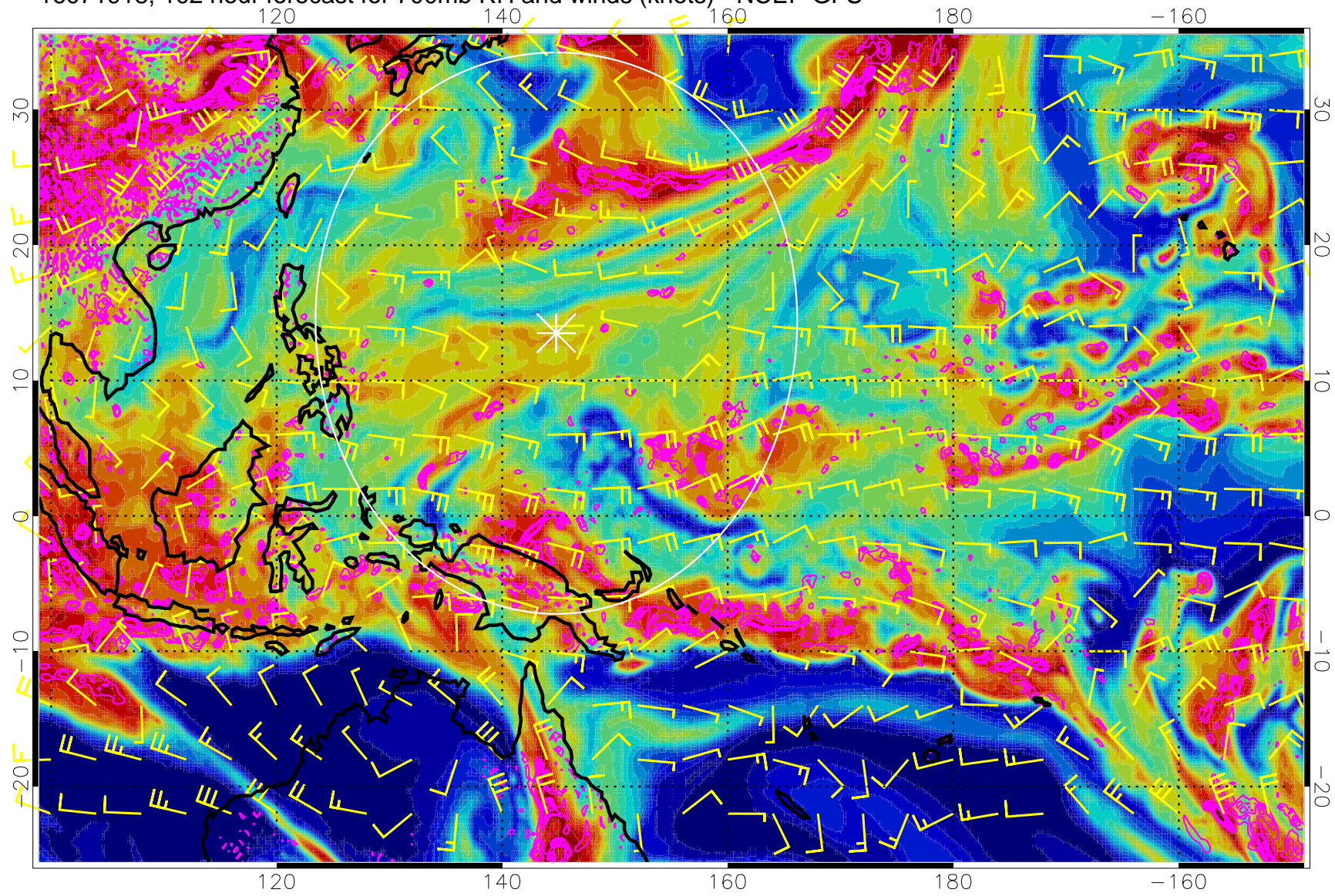
16071912, 96 hour forecast for 700mb RH and winds (knots) - NCEP GFS



Negative Omegas less than -0.3 , contours of 0.3 Pa/s

Range ring of 2304 km

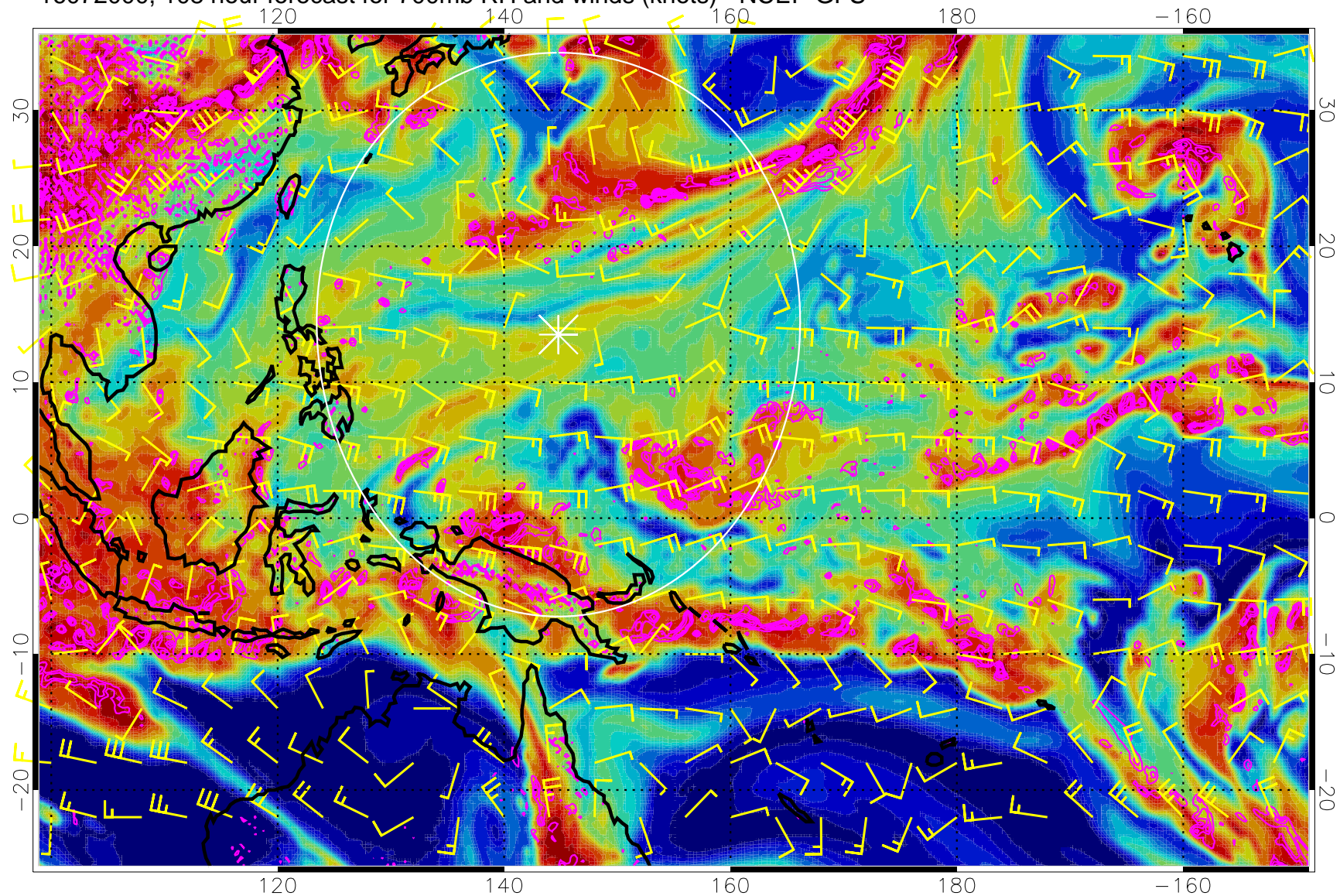
16071918, 102 hour forecast for 700mb RH and winds (knots) - NCEP GFS



Negative Omegas less than -0.3 , contours of 0.3 Pa/s

Range ring of 2304 km

16072000, 108 hour forecast for 700mb RH and winds (knots) - NCEP GFS

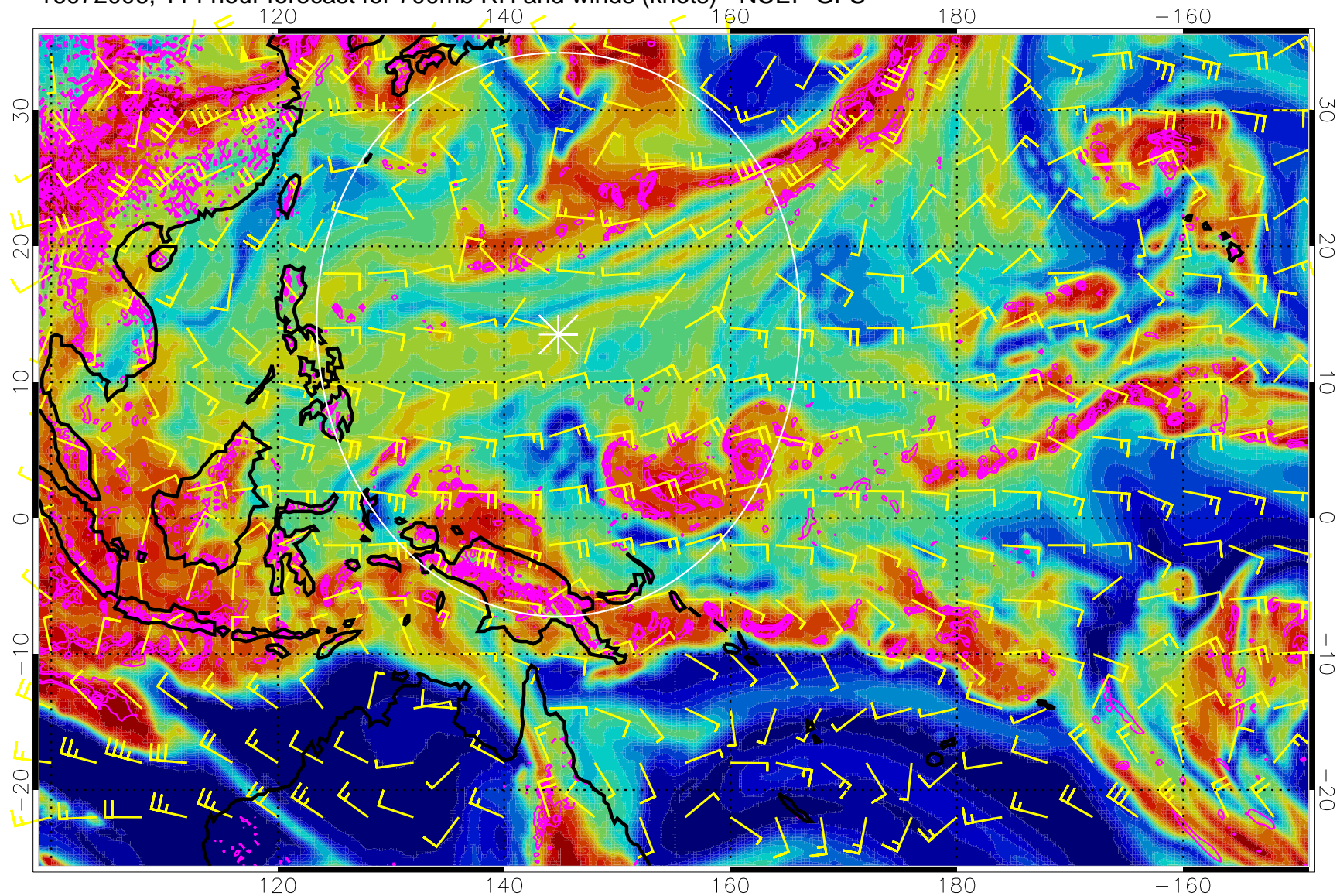


Negative Omegas less than -0.3 , contours of 0.3 Pa/s



Range ring of 2304 km

16072006, 114 hour forecast for 700mb RH and winds (knots) - NCEP GFS

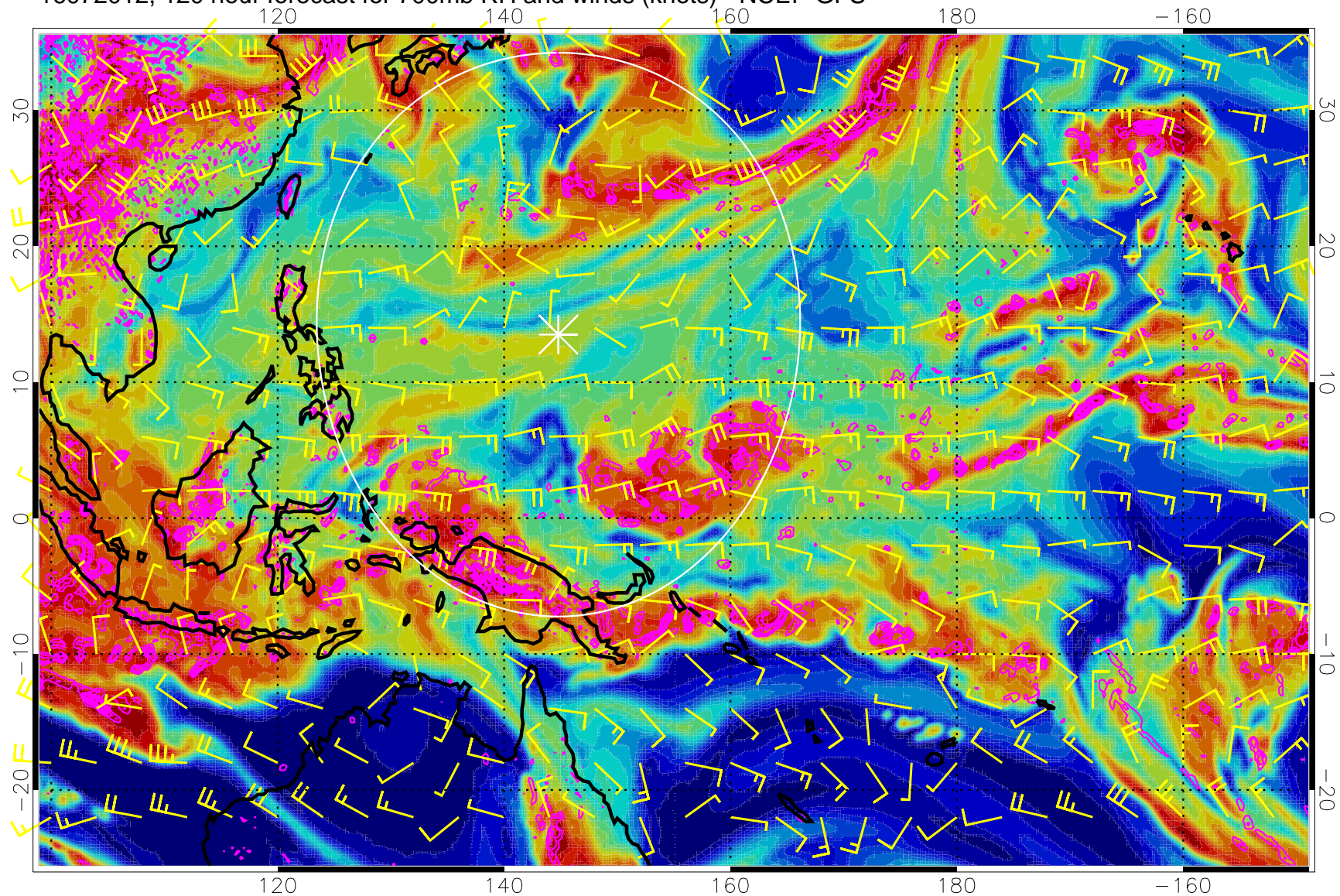


0 20 40 60 80 100
RH, %

Negative Omegas less than -0.3 , contours of 0.3 Pa/s

Range ring of 2304 km

16072012, 120 hour forecast for 700mb RH and winds (knots) - NCEP GFS



Negative Omegas less than -0.3 , contours of 0.3 Pa/s

Range ring of 2304 km