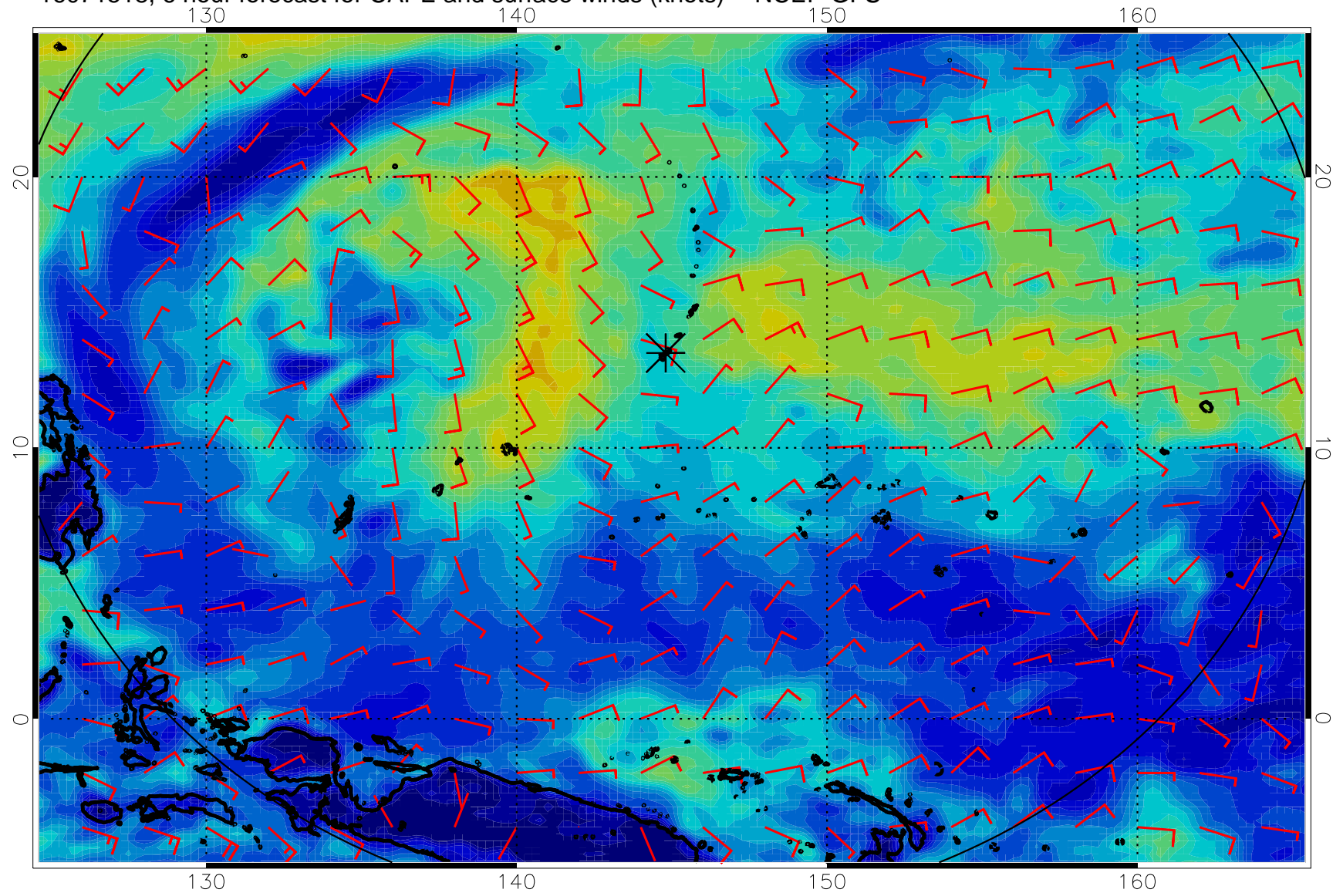
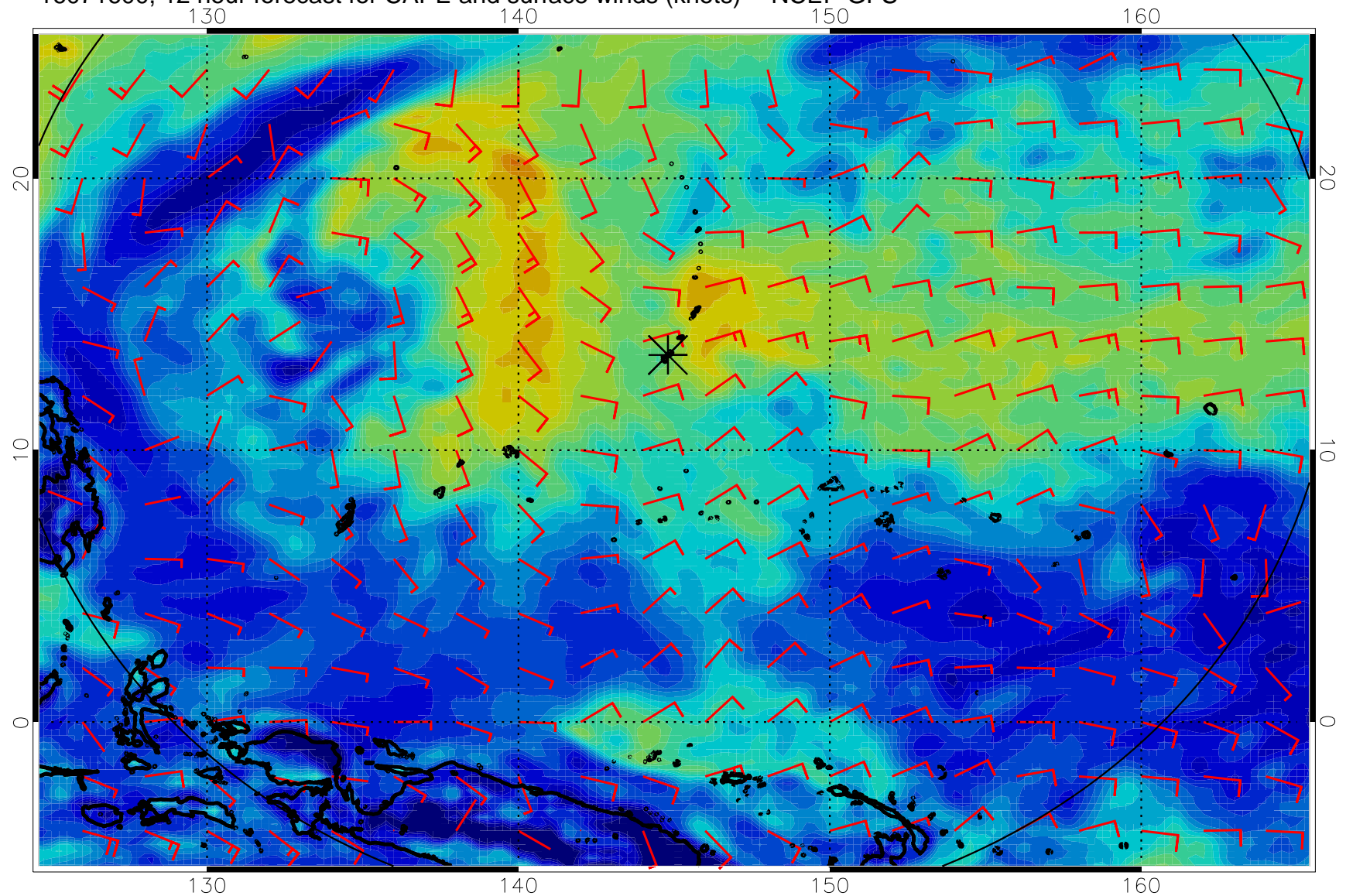


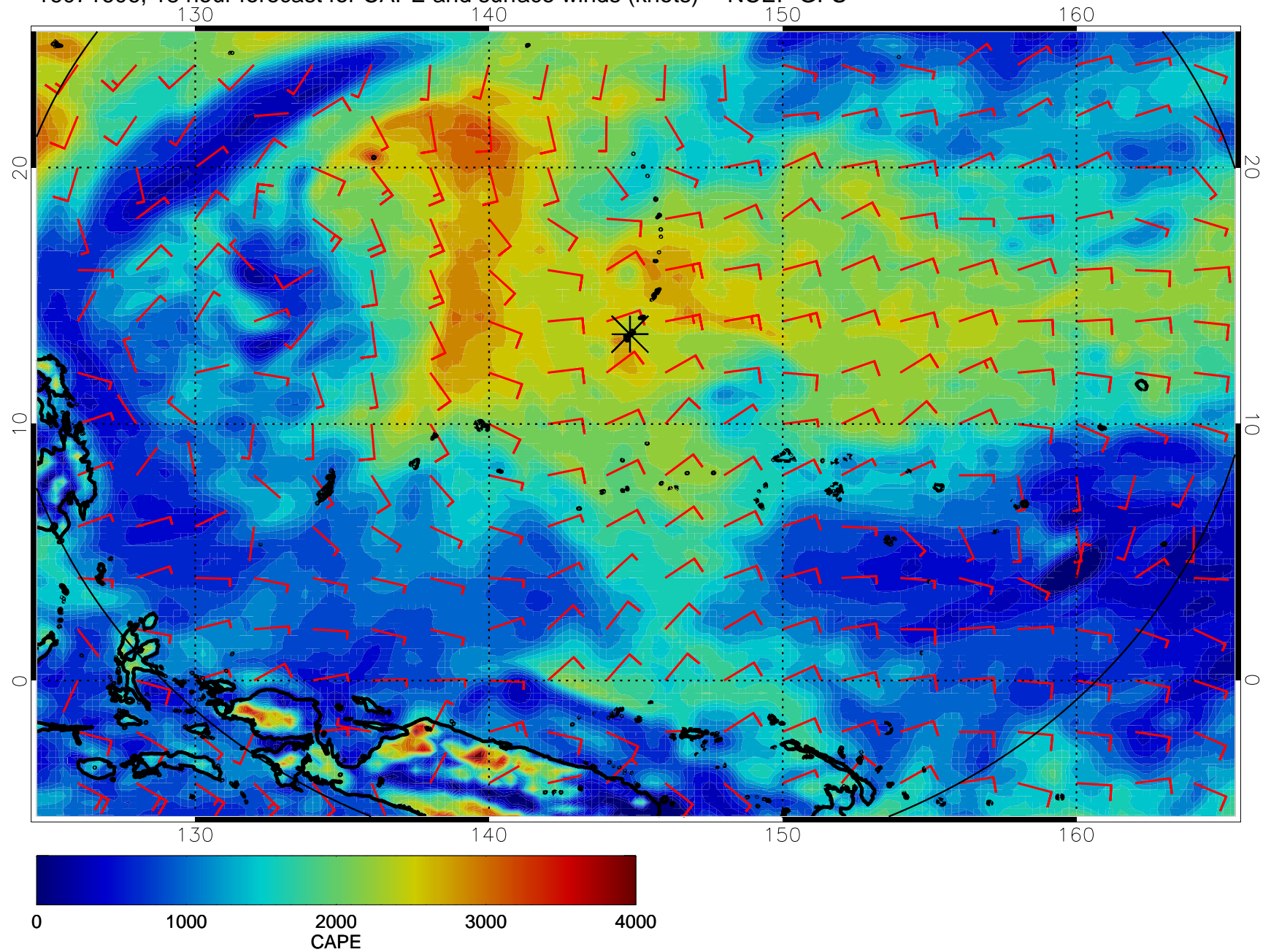
16071518, 6 hour forecast for CAPE and surface winds (knots) -- NCEP GFS



16071600, 12 hour forecast for CAPE and surface winds (knots) -- NCEP GFS

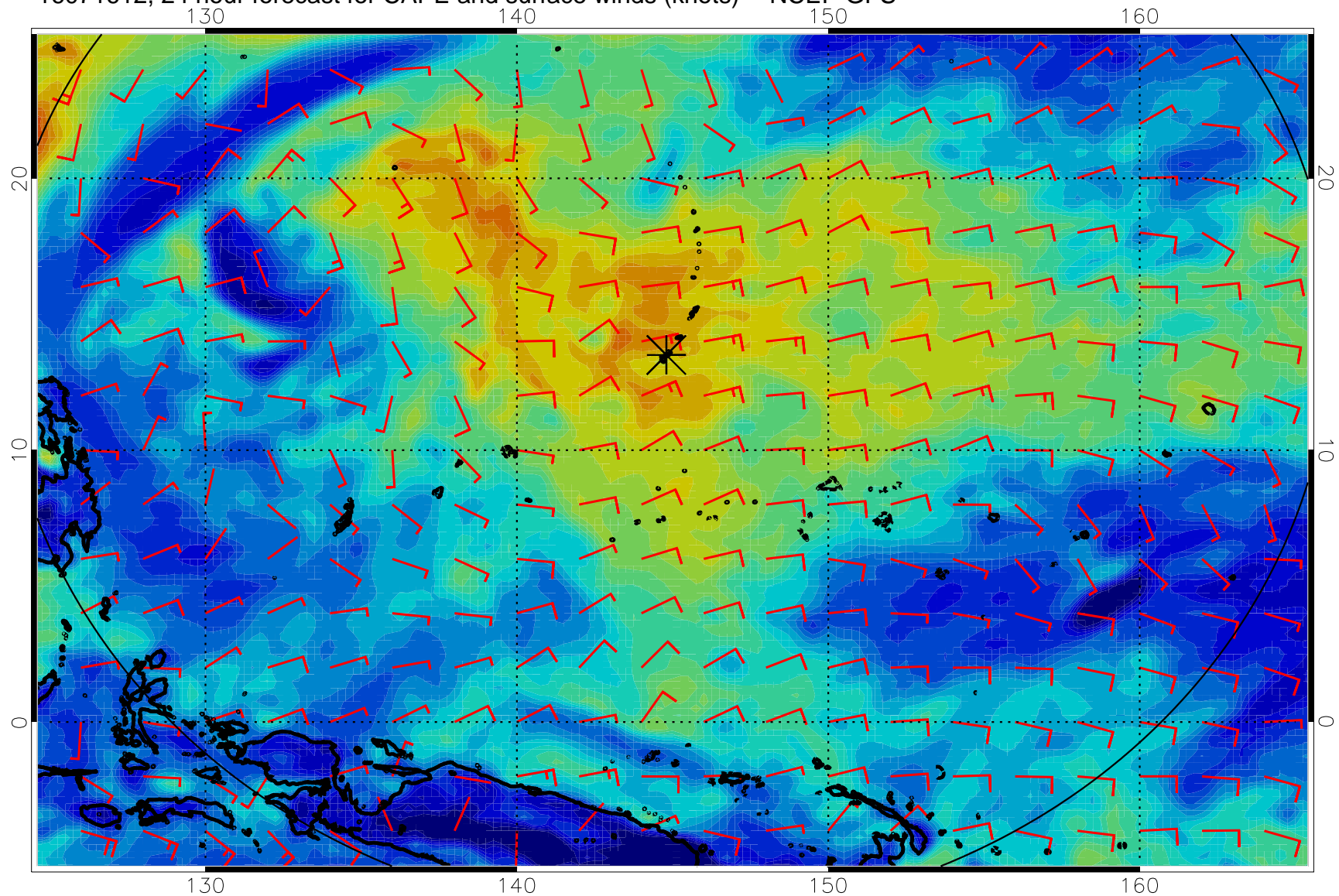


16071606, 18 hour forecast for CAPE and surface winds (knots) -- NCEP GFS



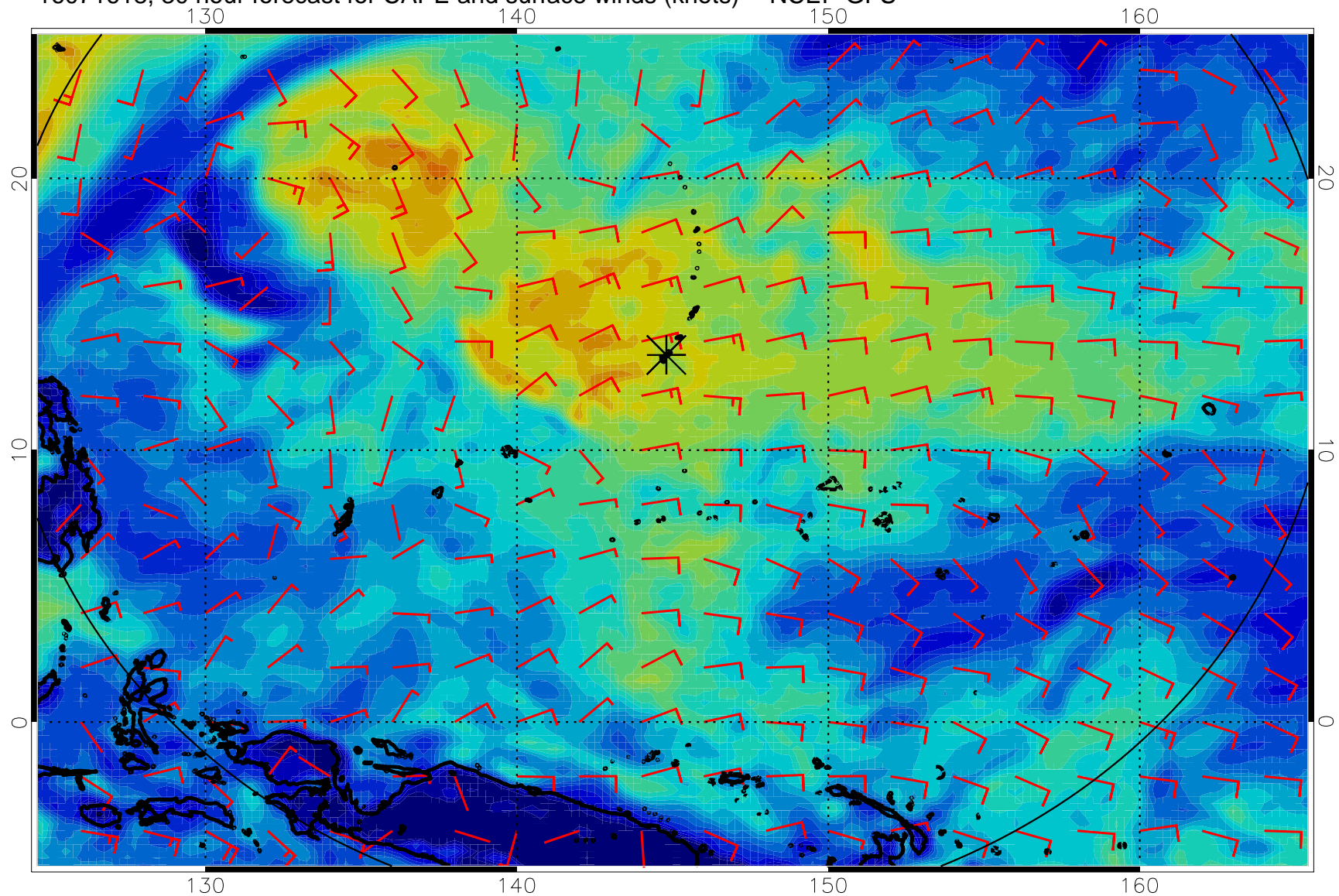


16071612, 24 hour forecast for CAPE and surface winds (knots) -- NCEP GFS

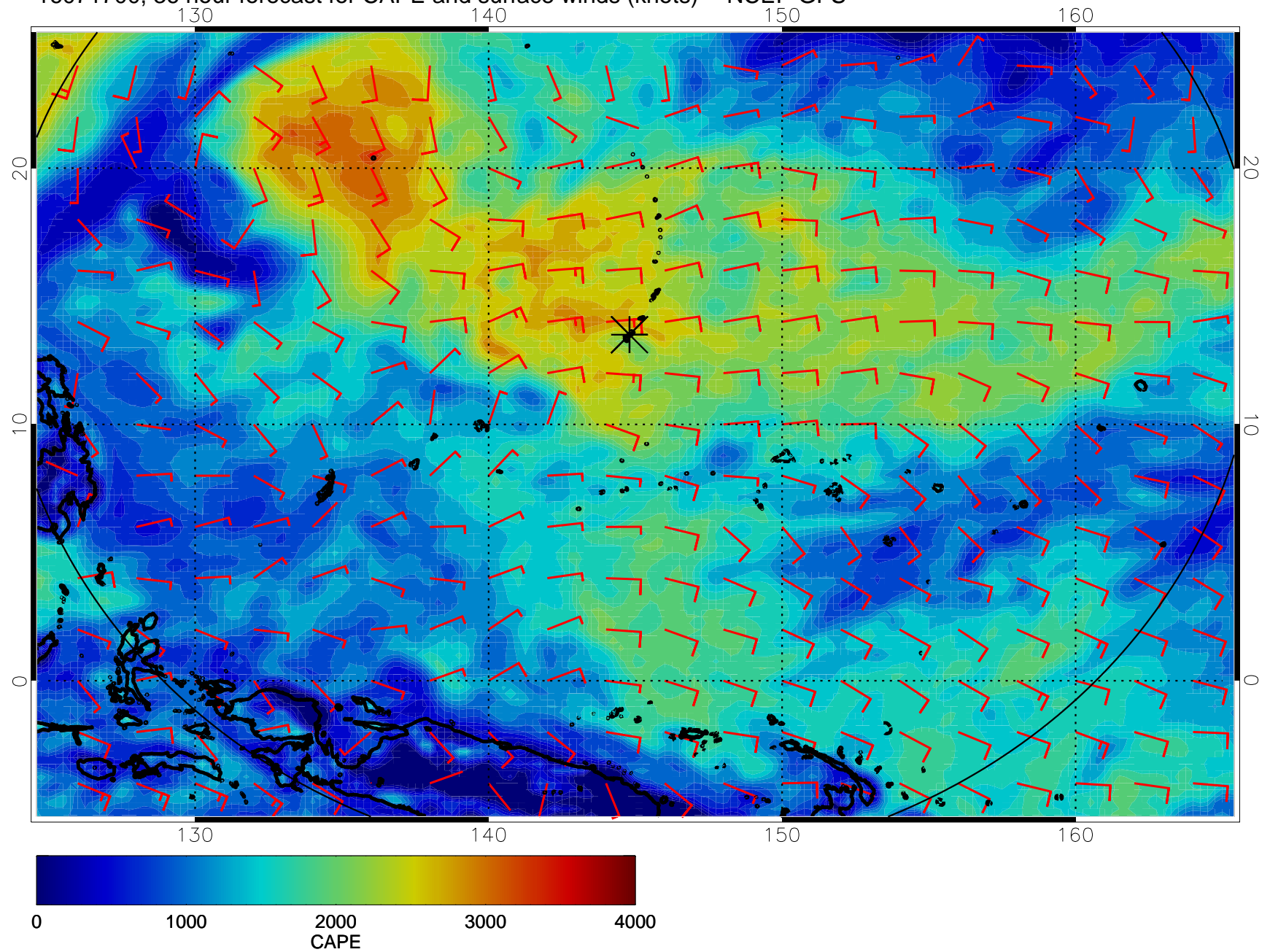




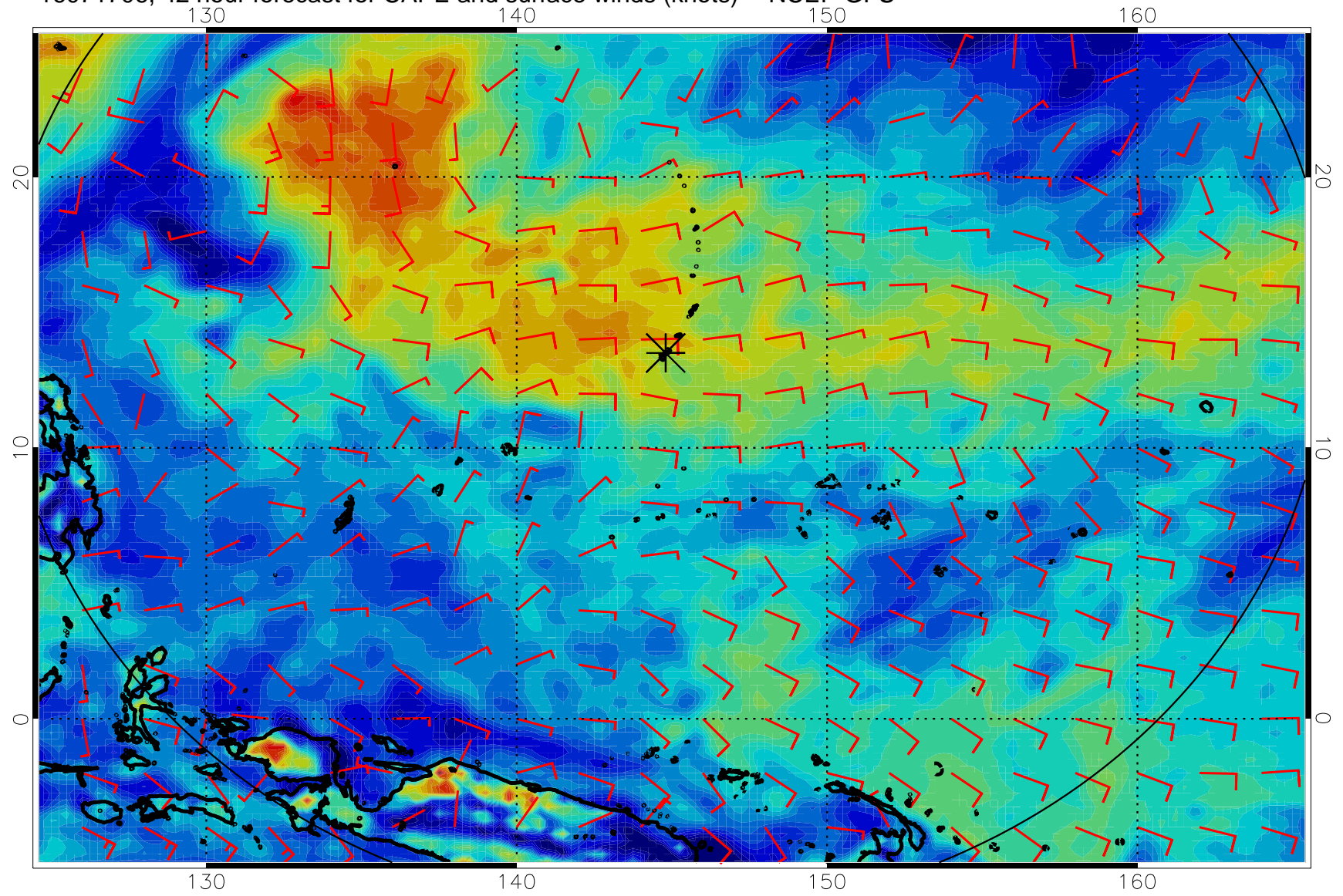
16071618, 30 hour forecast for CAPE and surface winds (knots) -- NCEP GFS



16071700, 36 hour forecast for CAPE and surface winds (knots) -- NCEP GFS

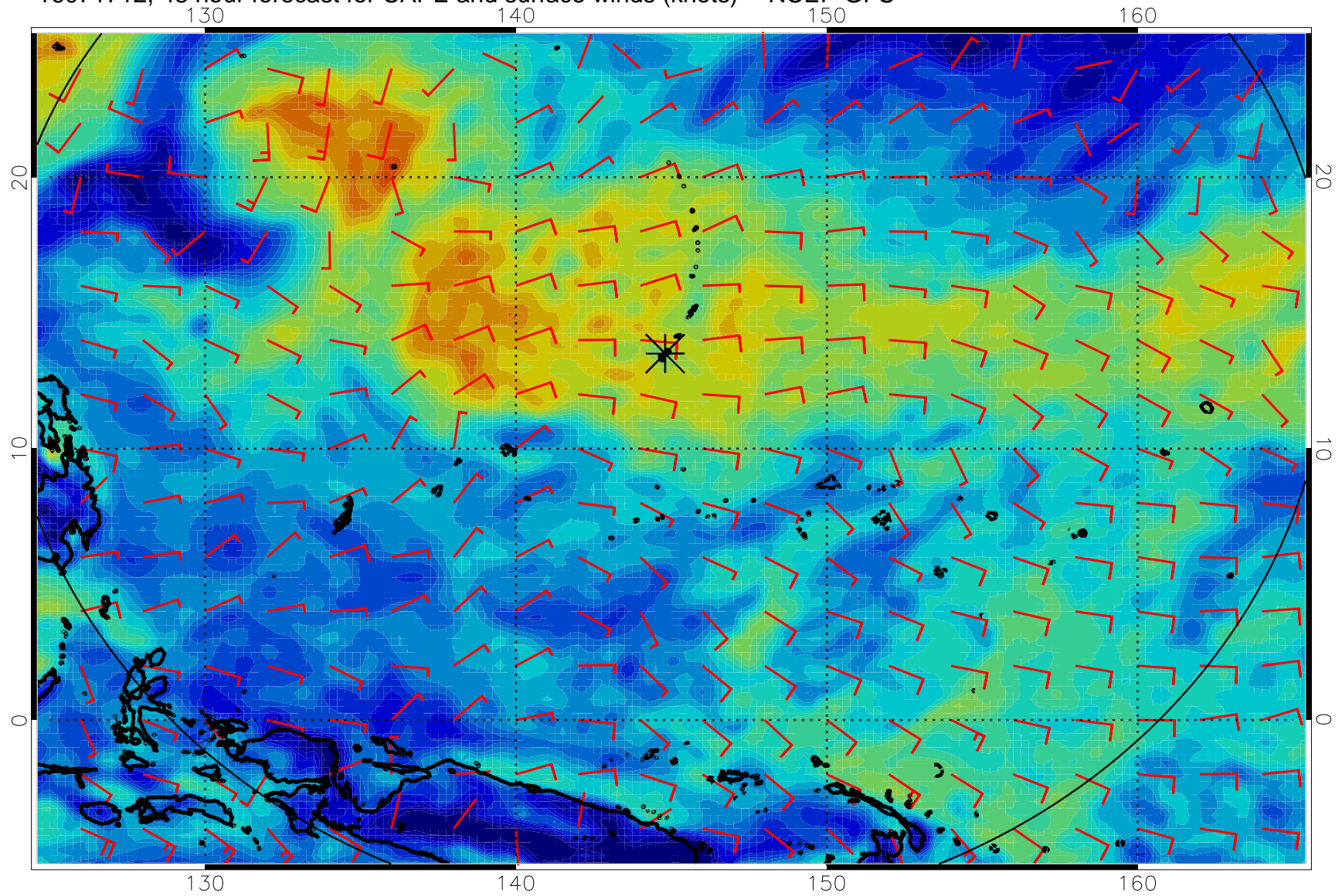


16071706, 42 hour forecast for CAPE and surface winds (knots) -- NCEP GFS

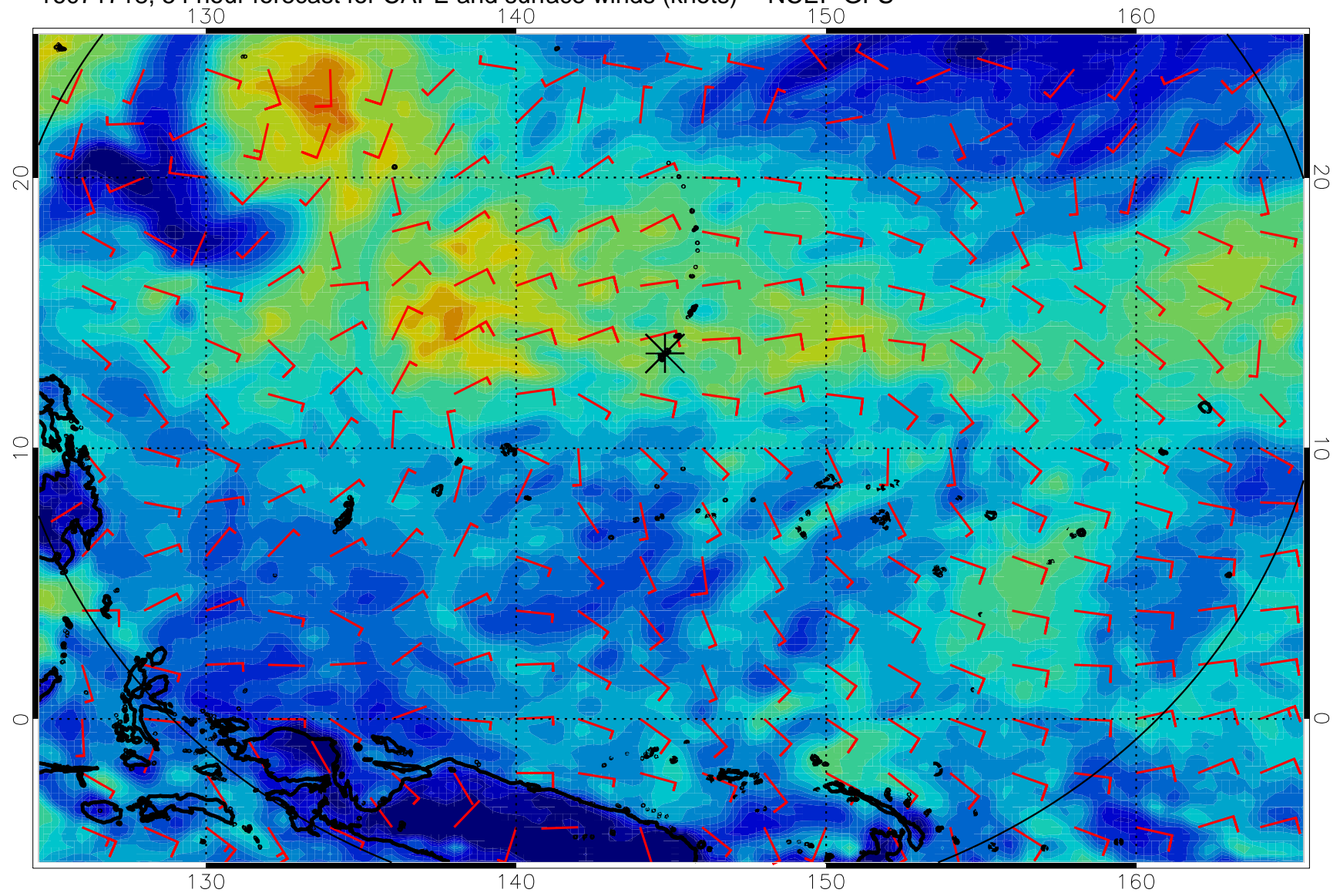




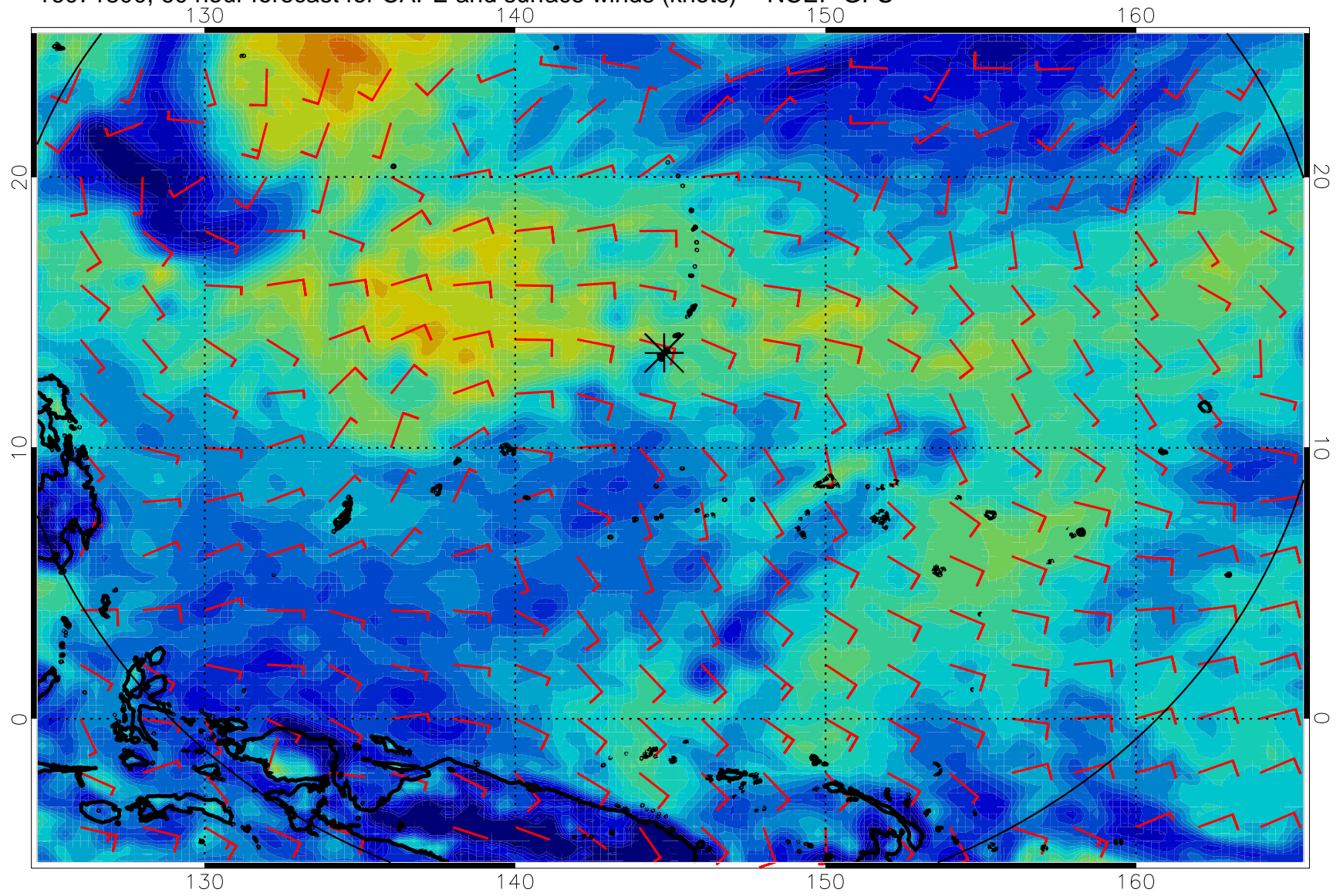
16071712, 48 hour forecast for CAPE and surface winds (knots) -- NCEP GFS



16071718, 54 hour forecast for CAPE and surface winds (knots) -- NCEP GFS

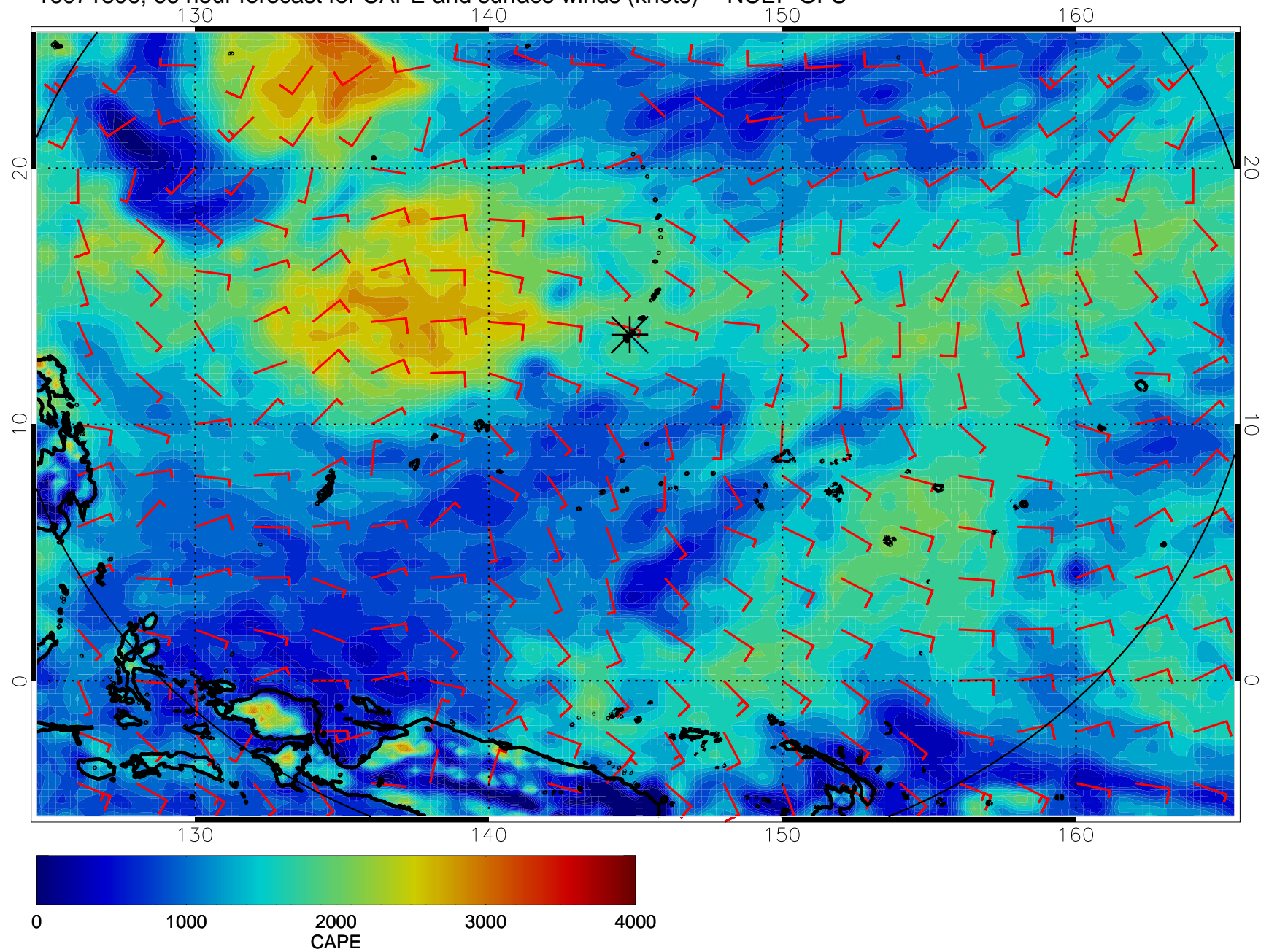


16071800, 60 hour forecast for CAPE and surface winds (knots) -- NCEP GFS

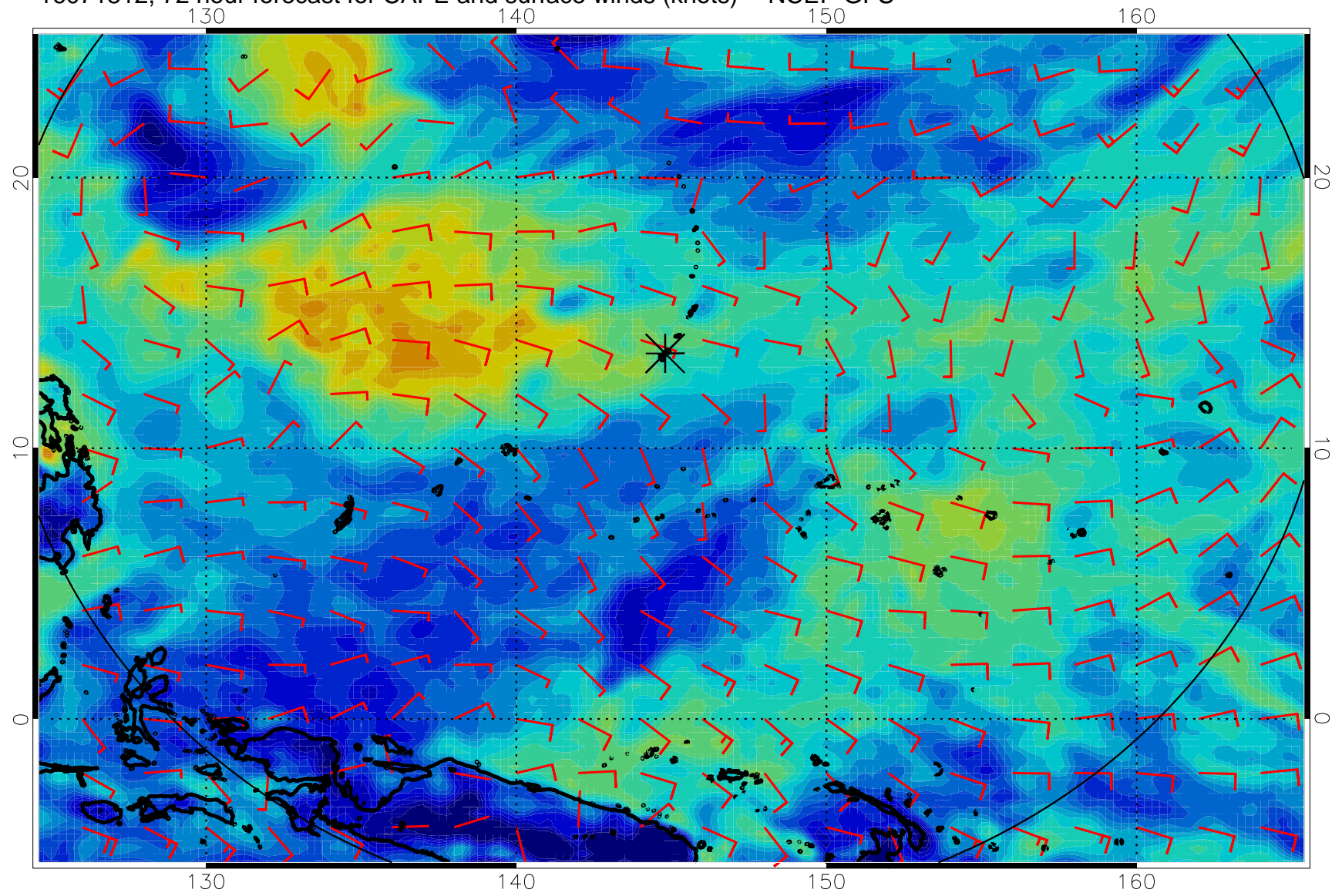




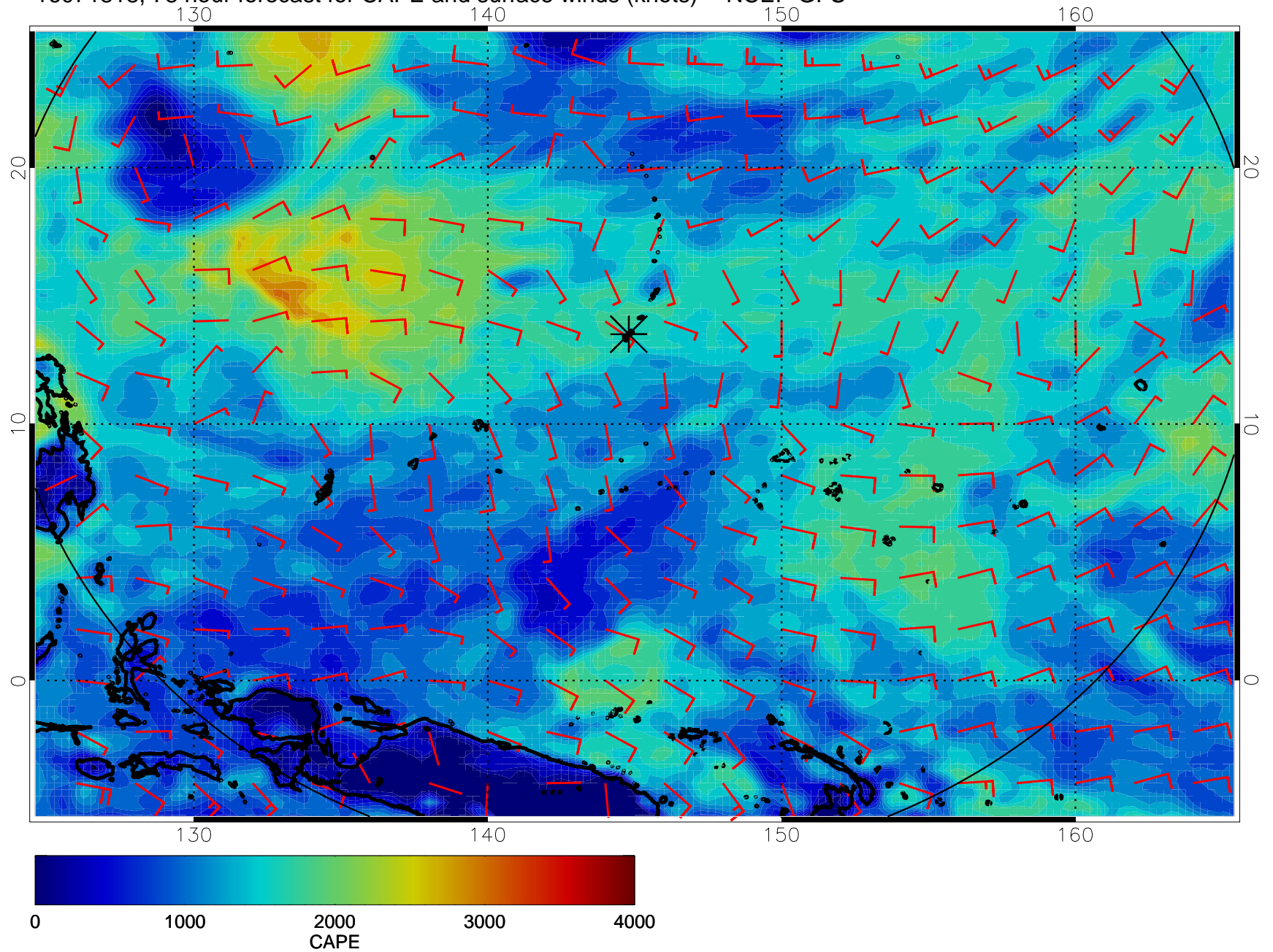
16071806, 66 hour forecast for CAPE and surface winds (knots) -- NCEP GFS



16071812, 72 hour forecast for CAPE and surface winds (knots) -- NCEP GFS

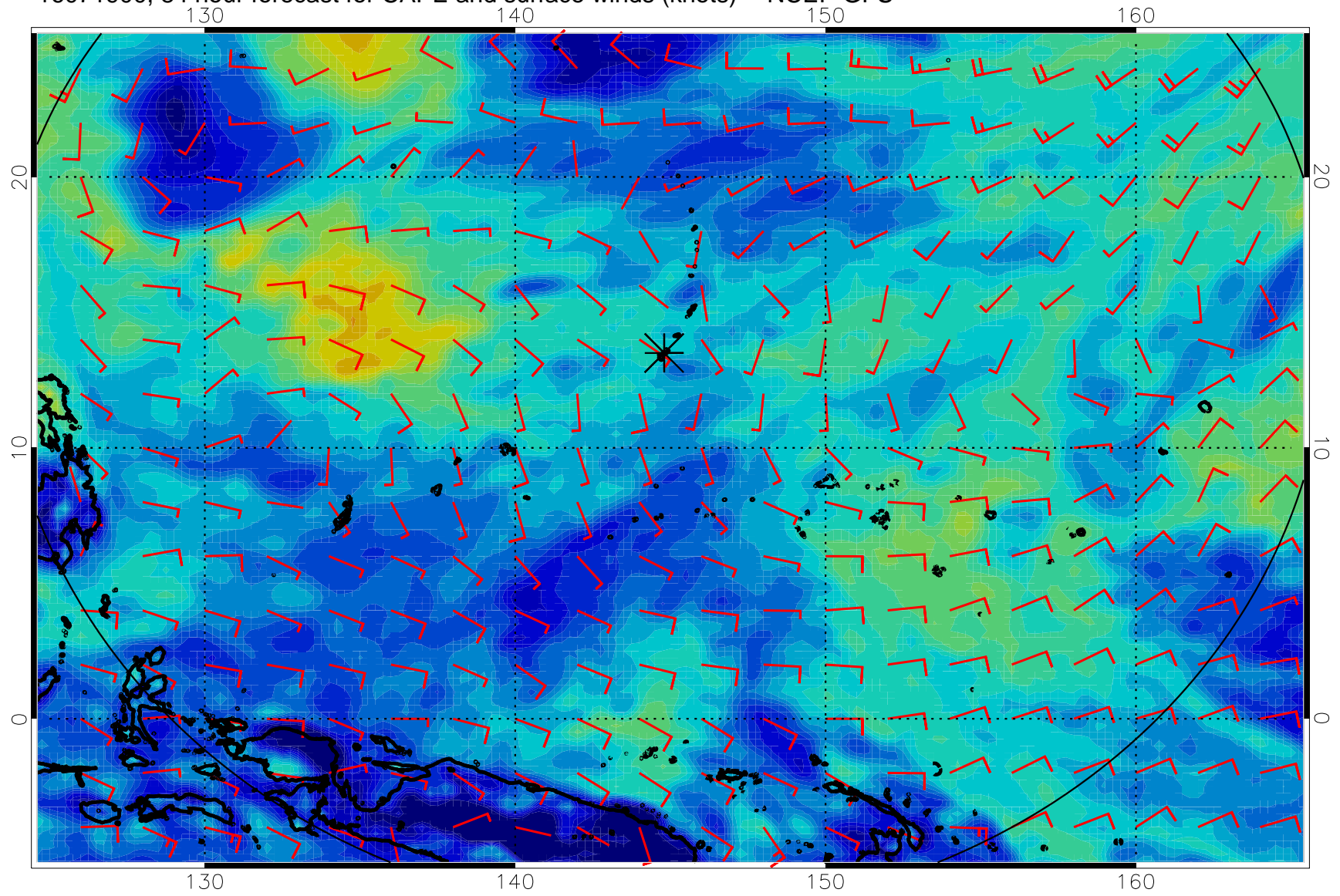


16071818, 78 hour forecast for CAPE and surface winds (knots) -- NCEP GFS

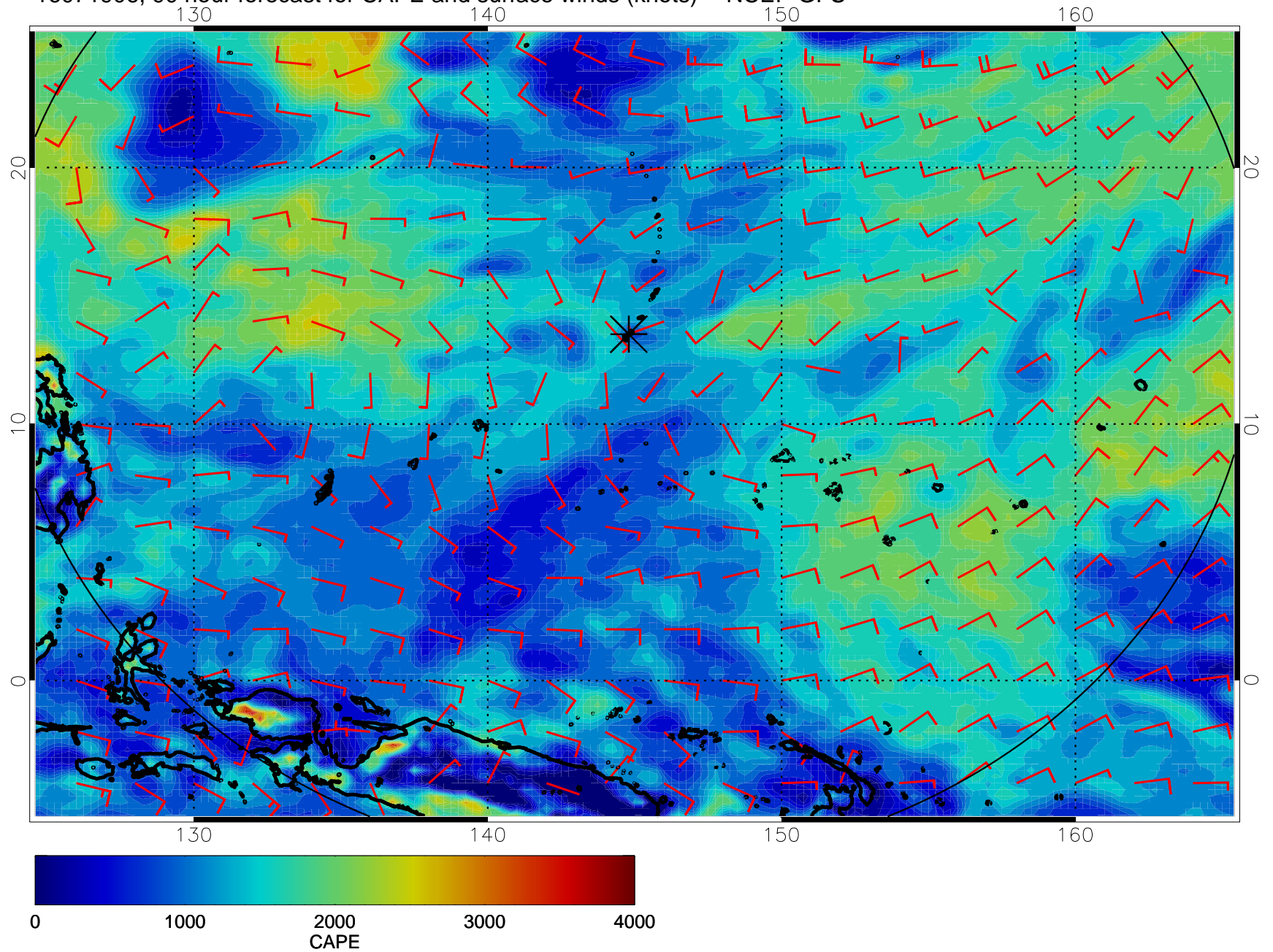




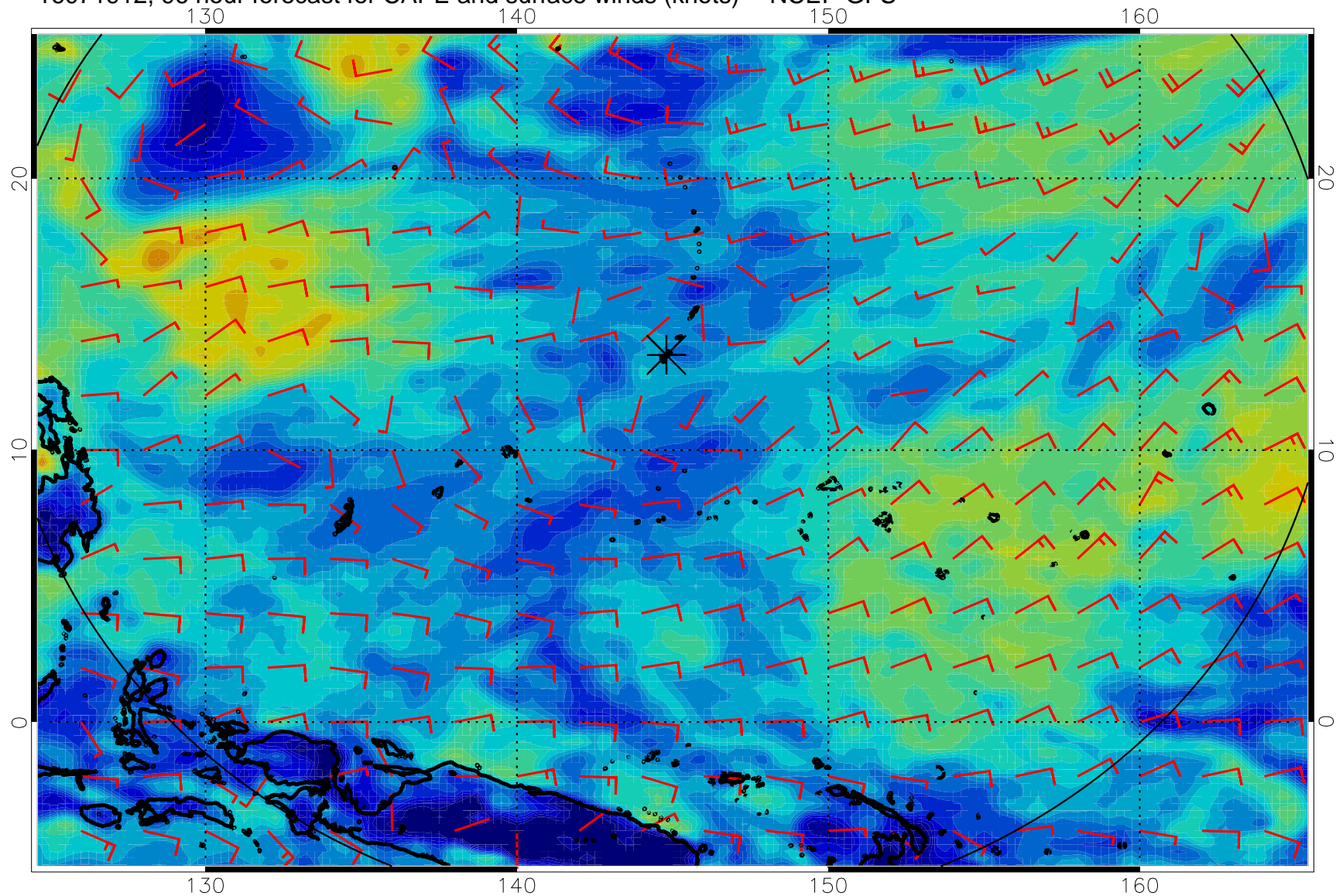
16071900, 84 hour forecast for CAPE and surface winds (knots) -- NCEP GFS



16071906, 90 hour forecast for CAPE and surface winds (knots) -- NCEP GFS

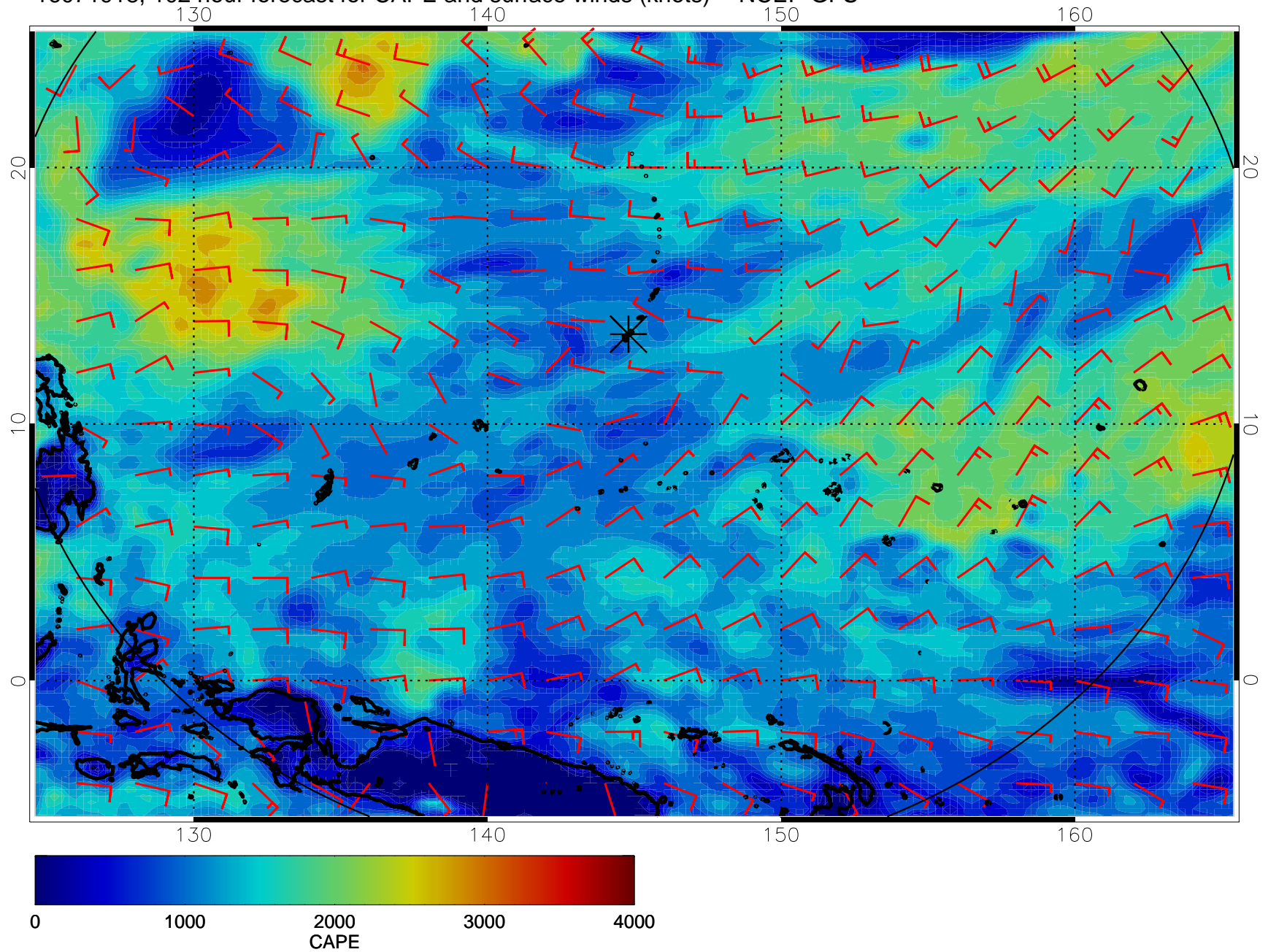


16071912, 96 hour forecast for CAPE and surface winds (knots) -- NCEP GFS

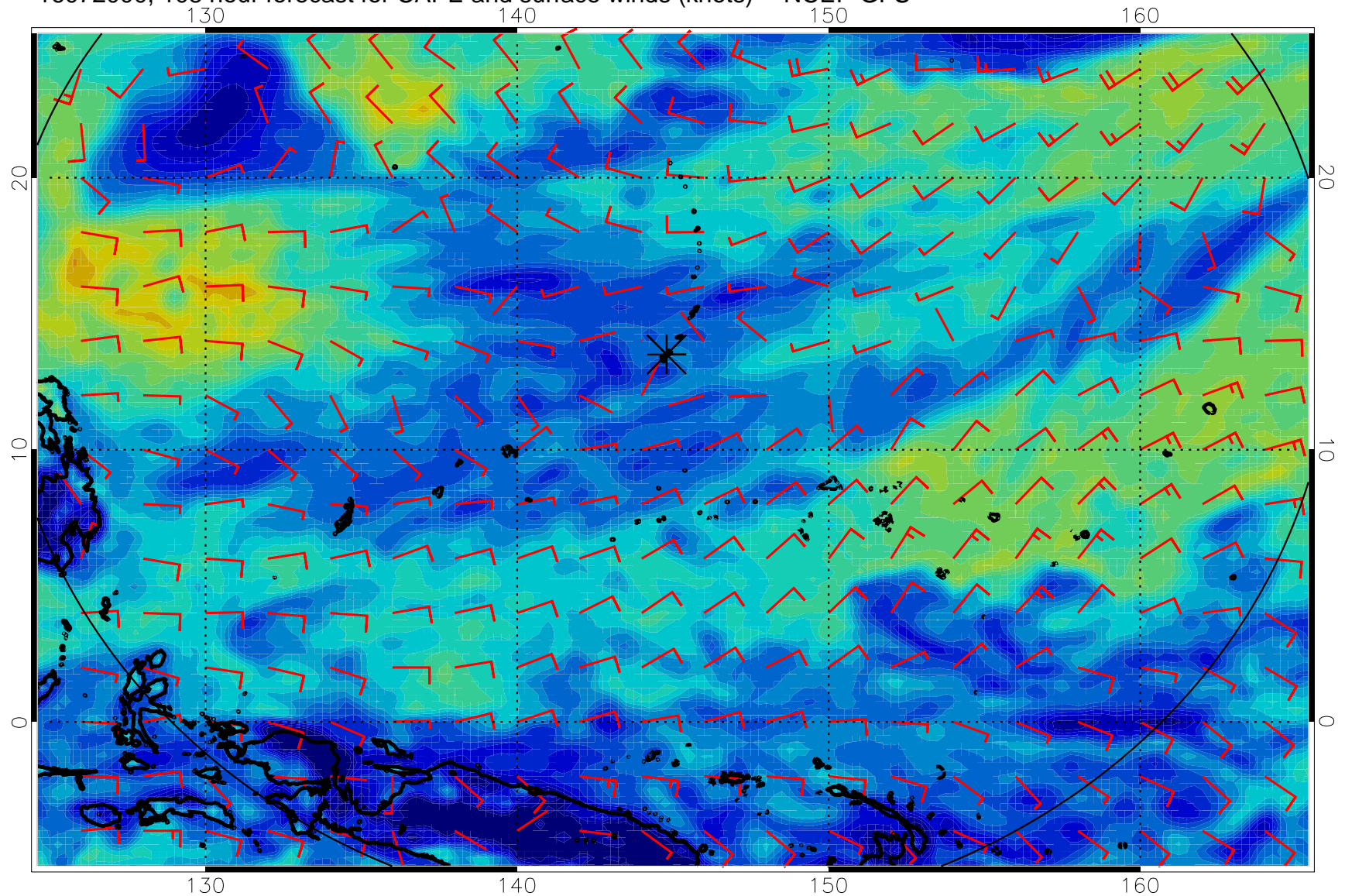




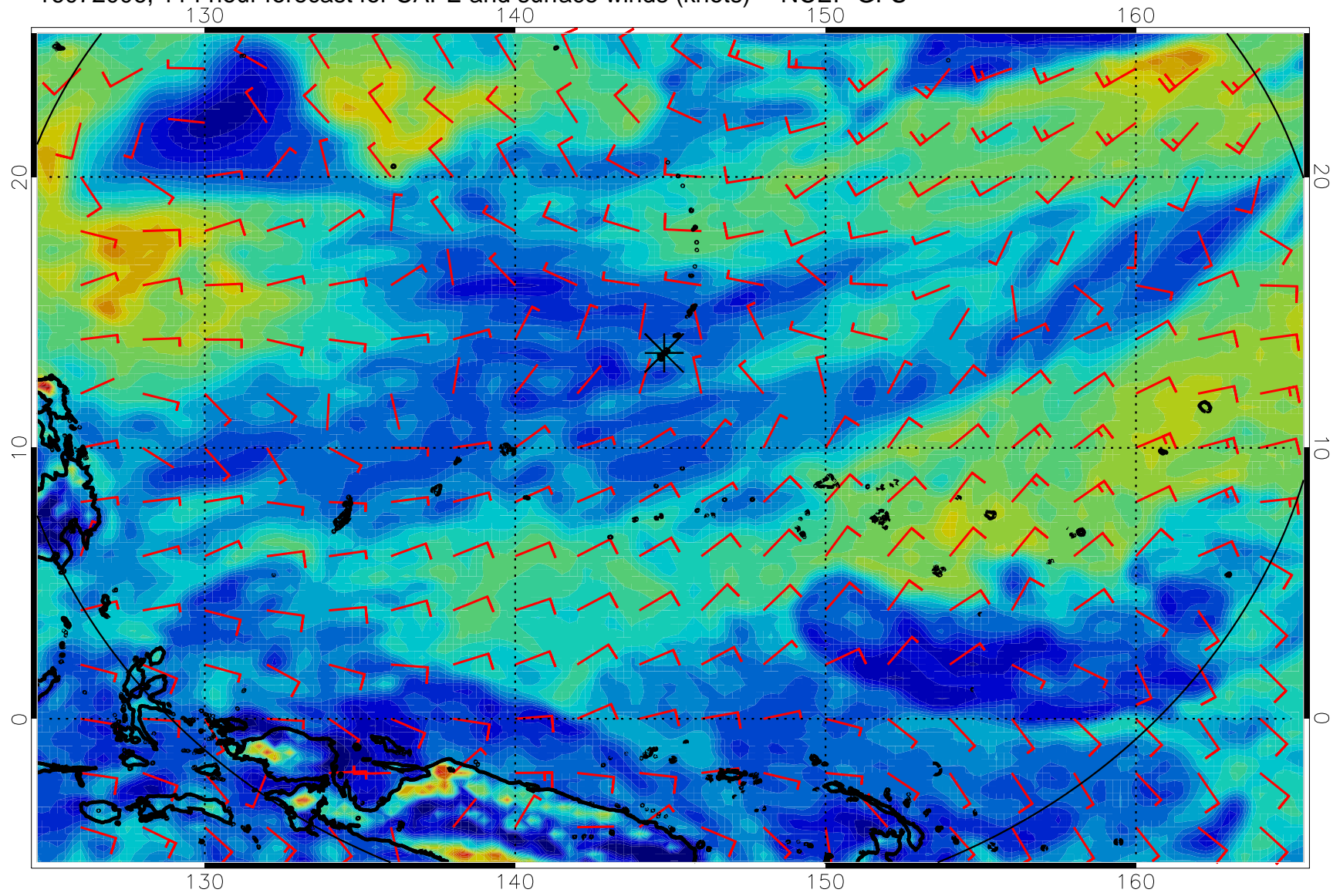
16071918, 102 hour forecast for CAPE and surface winds (knots) -- NCEP GFS



16072000, 108 hour forecast for CAPE and surface winds (knots) -- NCEP GFS



16072006, 114 hour forecast for CAPE and surface winds (knots) -- NCEP GFS





16072012, 120 hour forecast for CAPE and surface winds (knots) -- NCEP GFS

