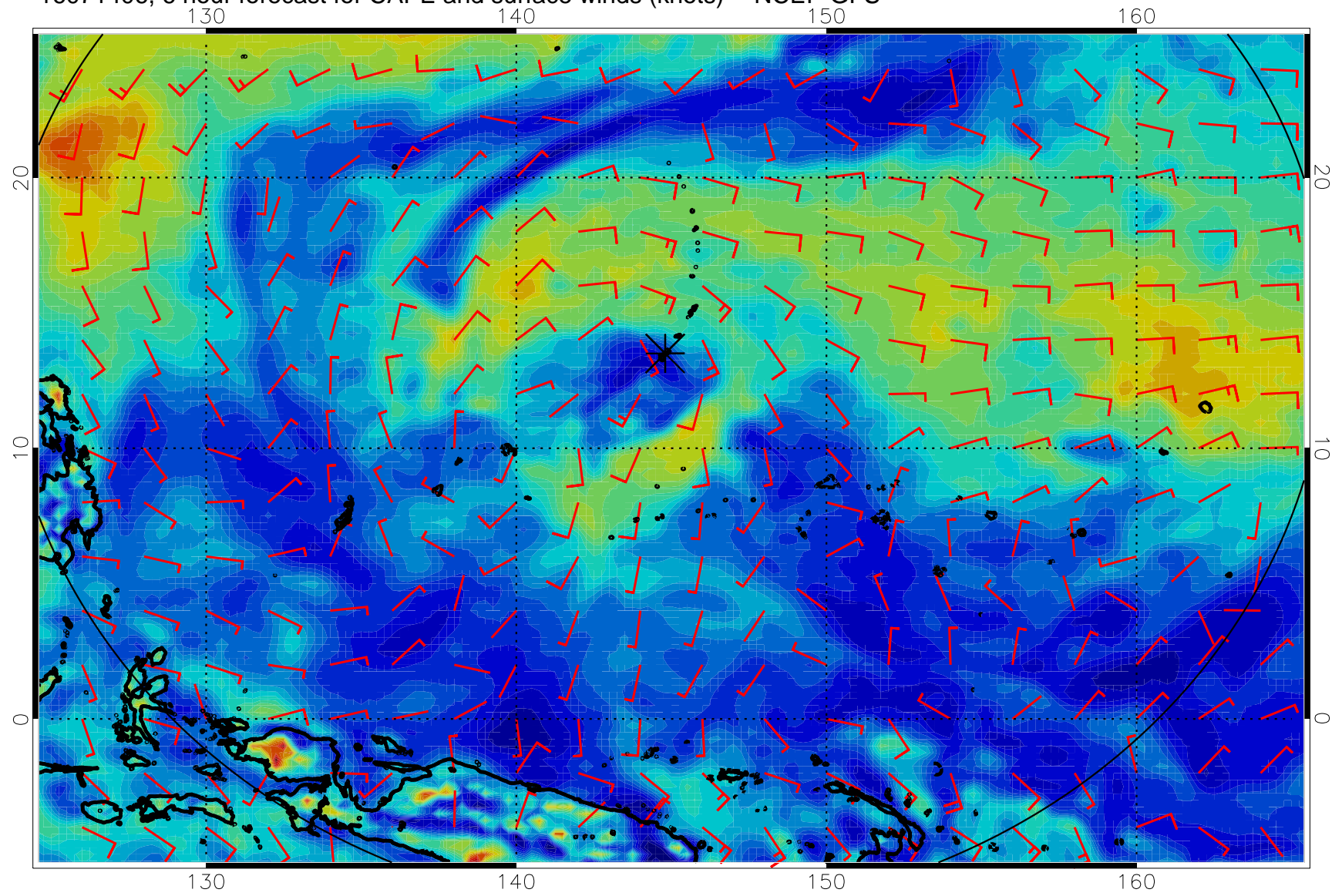
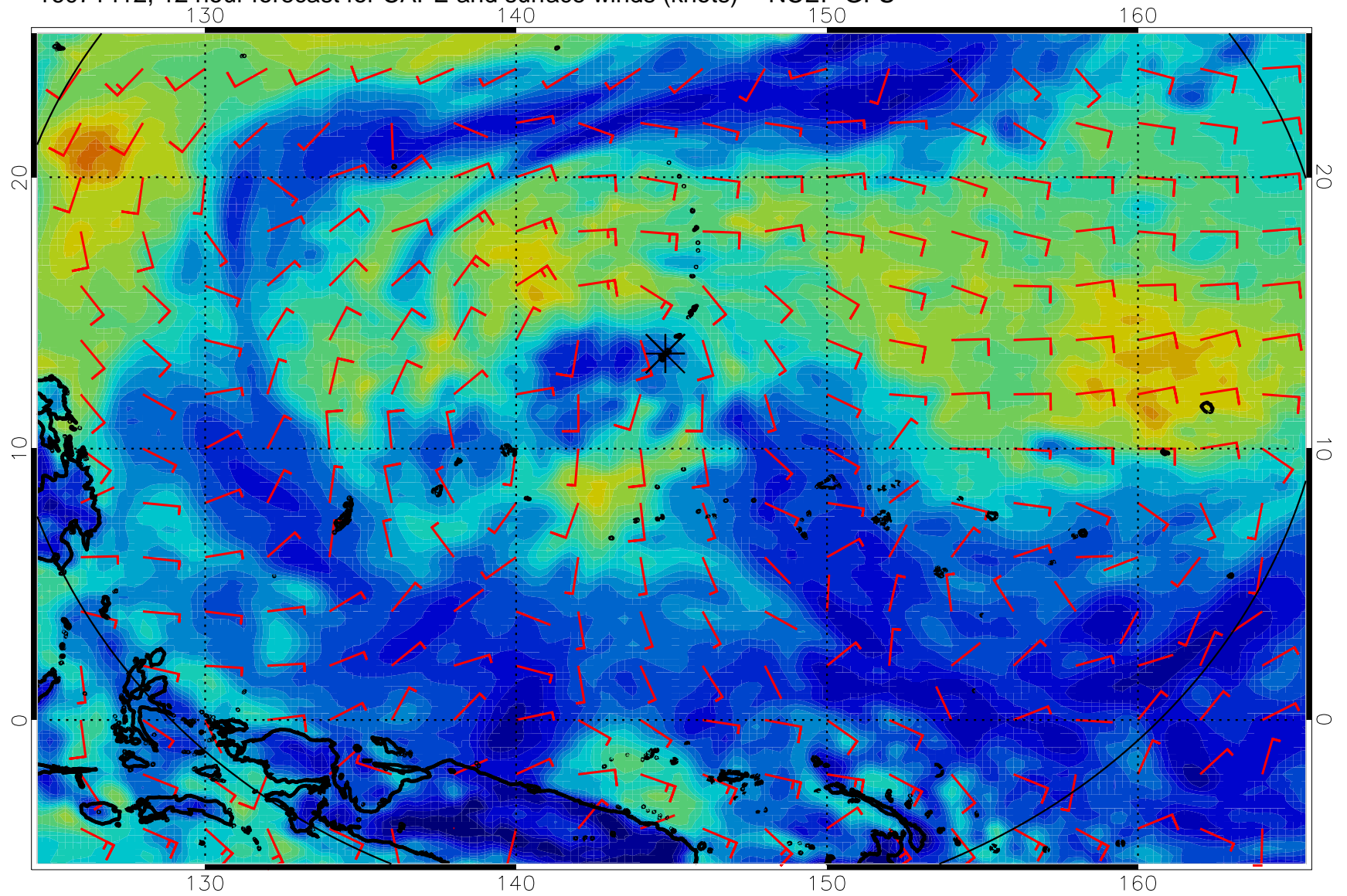


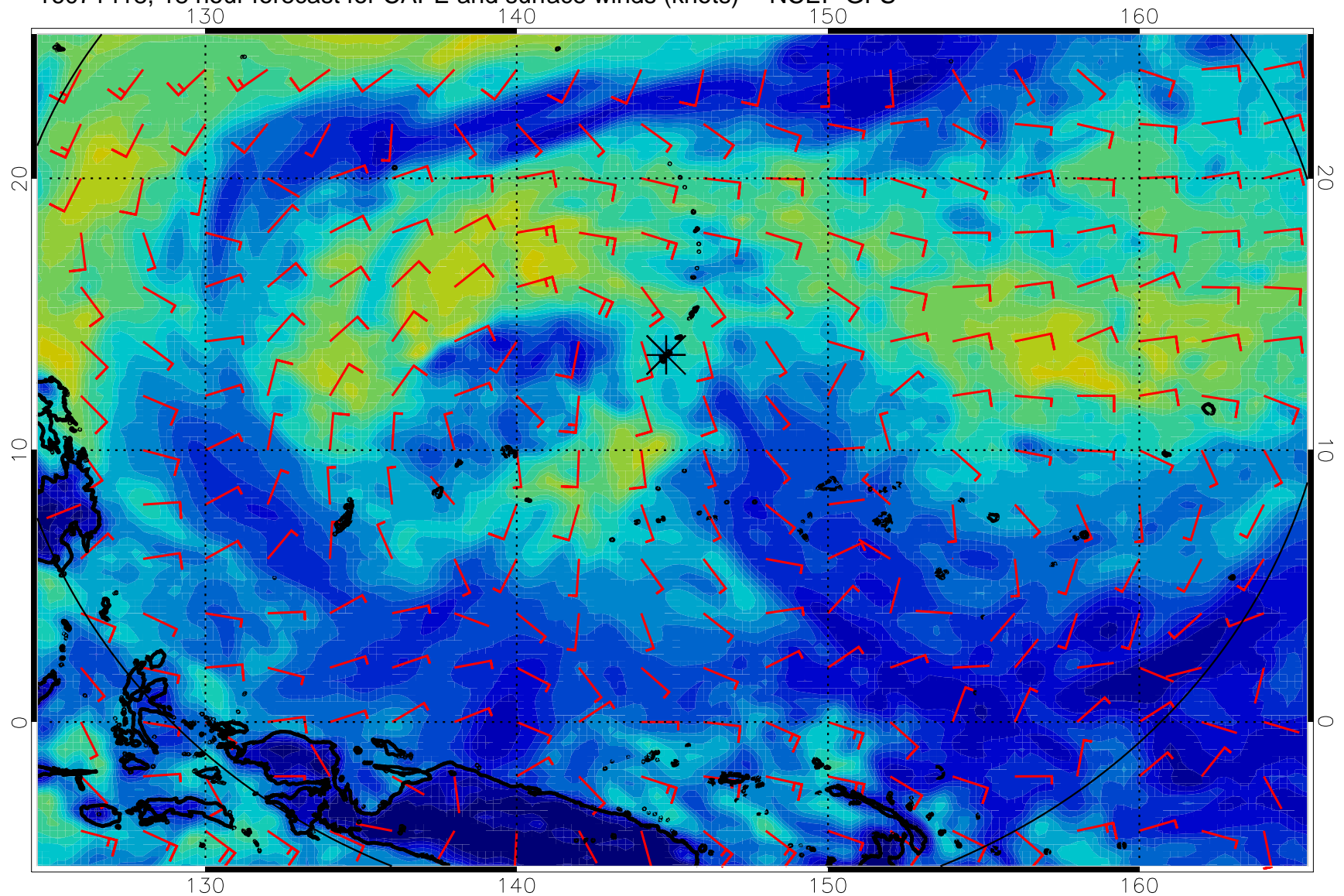
16071406, 6 hour forecast for CAPE and surface winds (knots) -- NCEP GFS



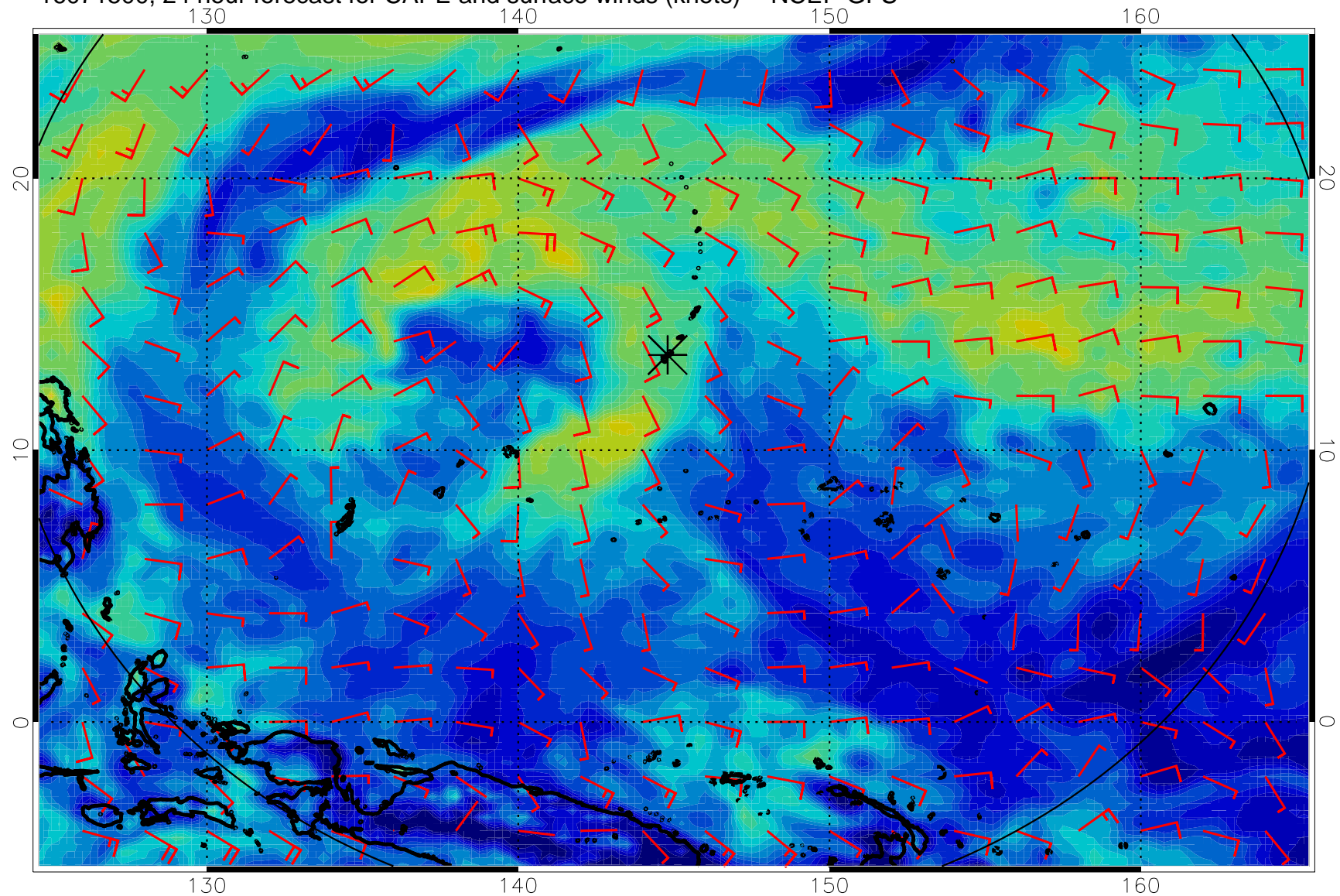
16071412, 12 hour forecast for CAPE and surface winds (knots) -- NCEP GFS



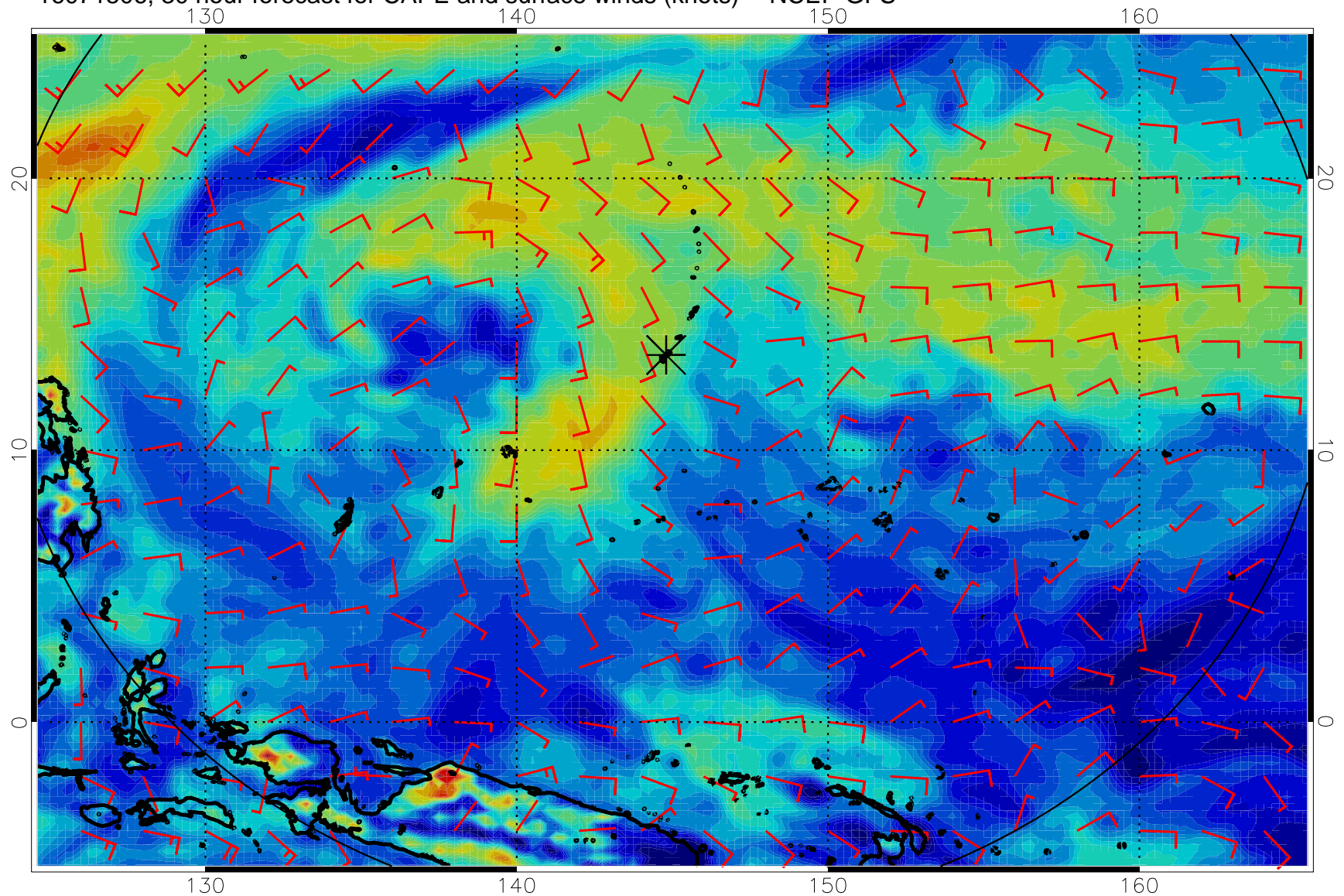
16071418, 18 hour forecast for CAPE and surface winds (knots) -- NCEP GFS



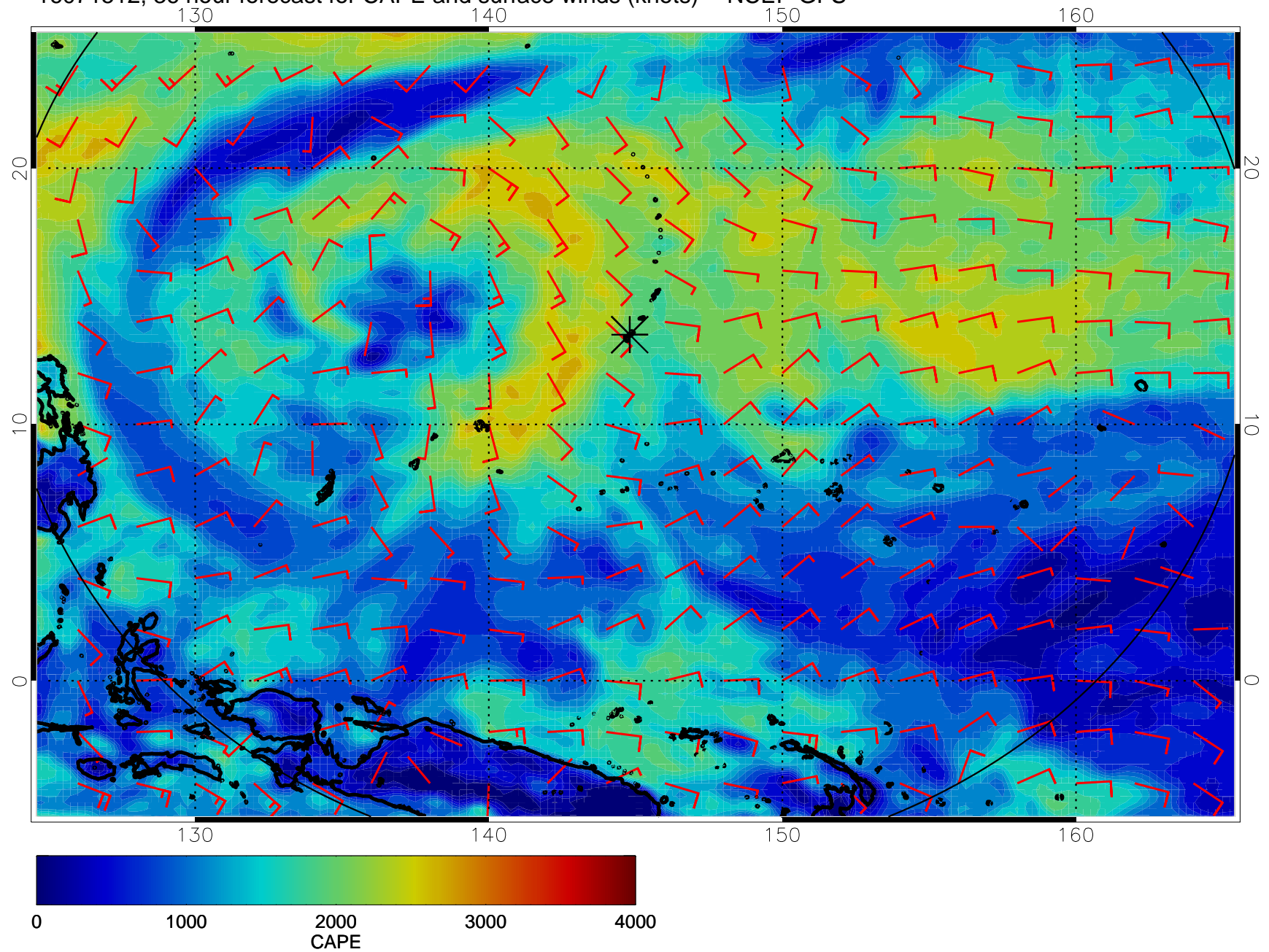
16071500, 24 hour forecast for CAPE and surface winds (knots) -- NCEP GFS



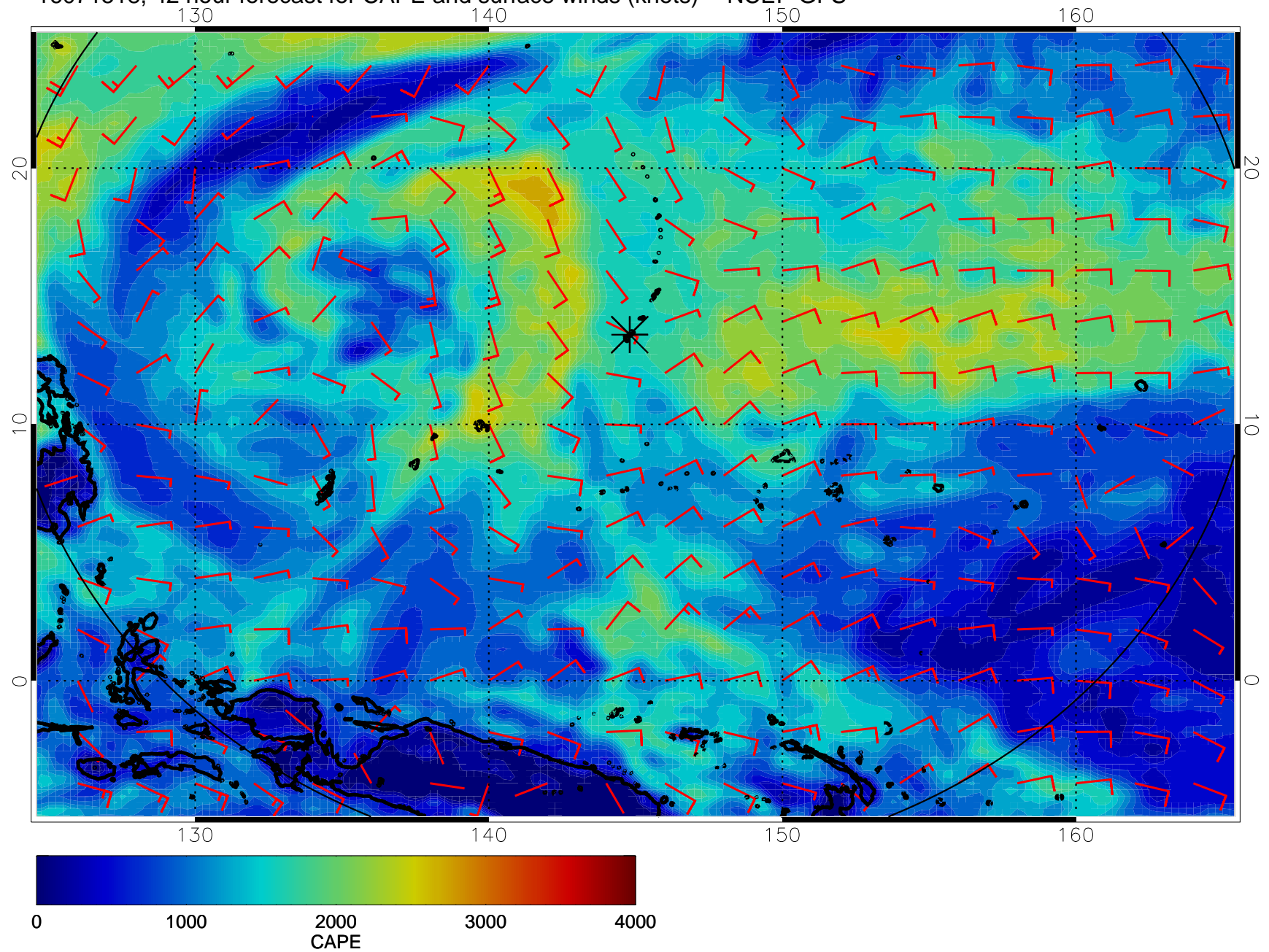
16071506, 30 hour forecast for CAPE and surface winds (knots) -- NCEP GFS



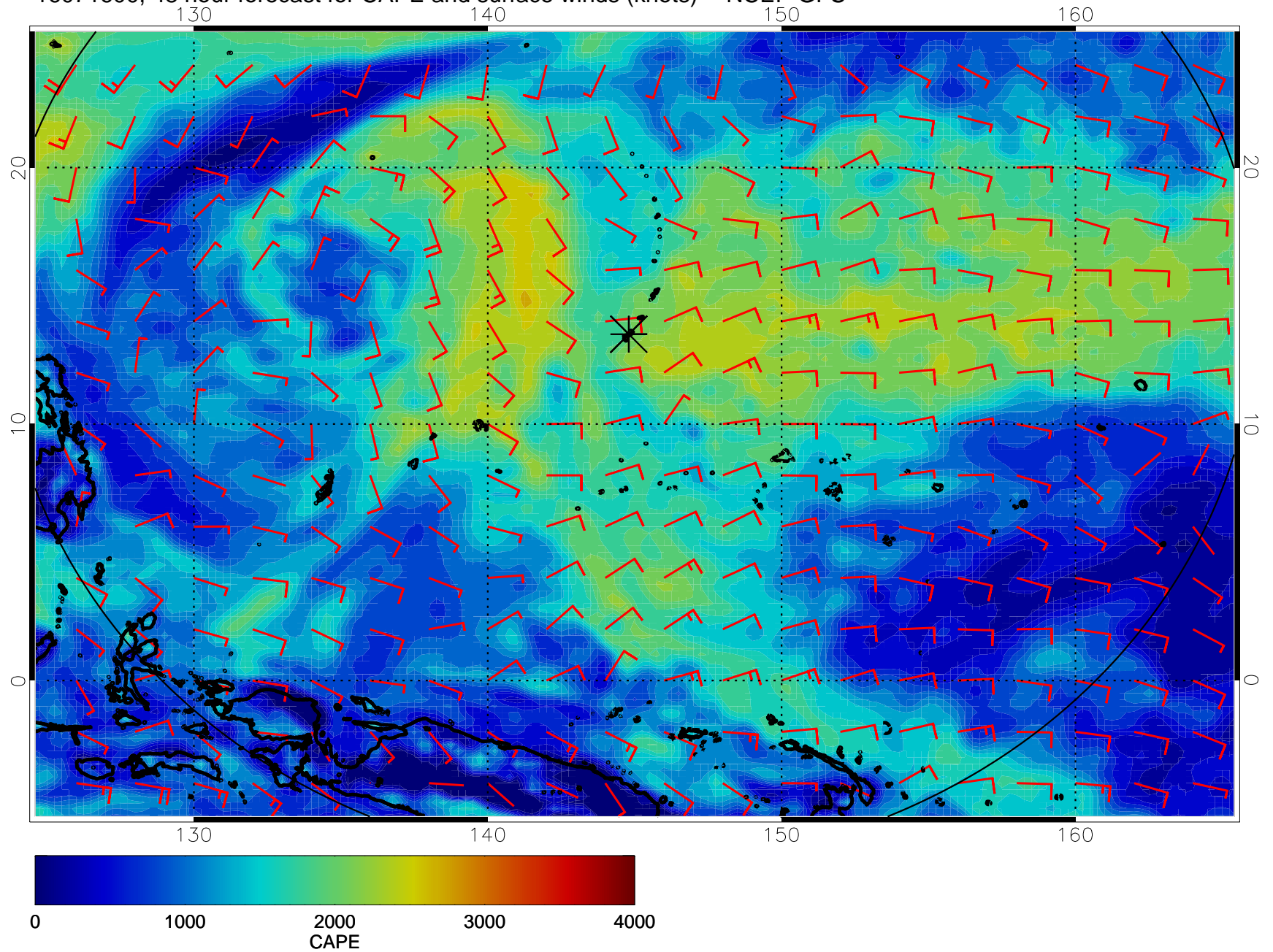
16071512, 36 hour forecast for CAPE and surface winds (knots) -- NCEP GFS



16071518, 42 hour forecast for CAPE and surface winds (knots) -- NCEP GFS

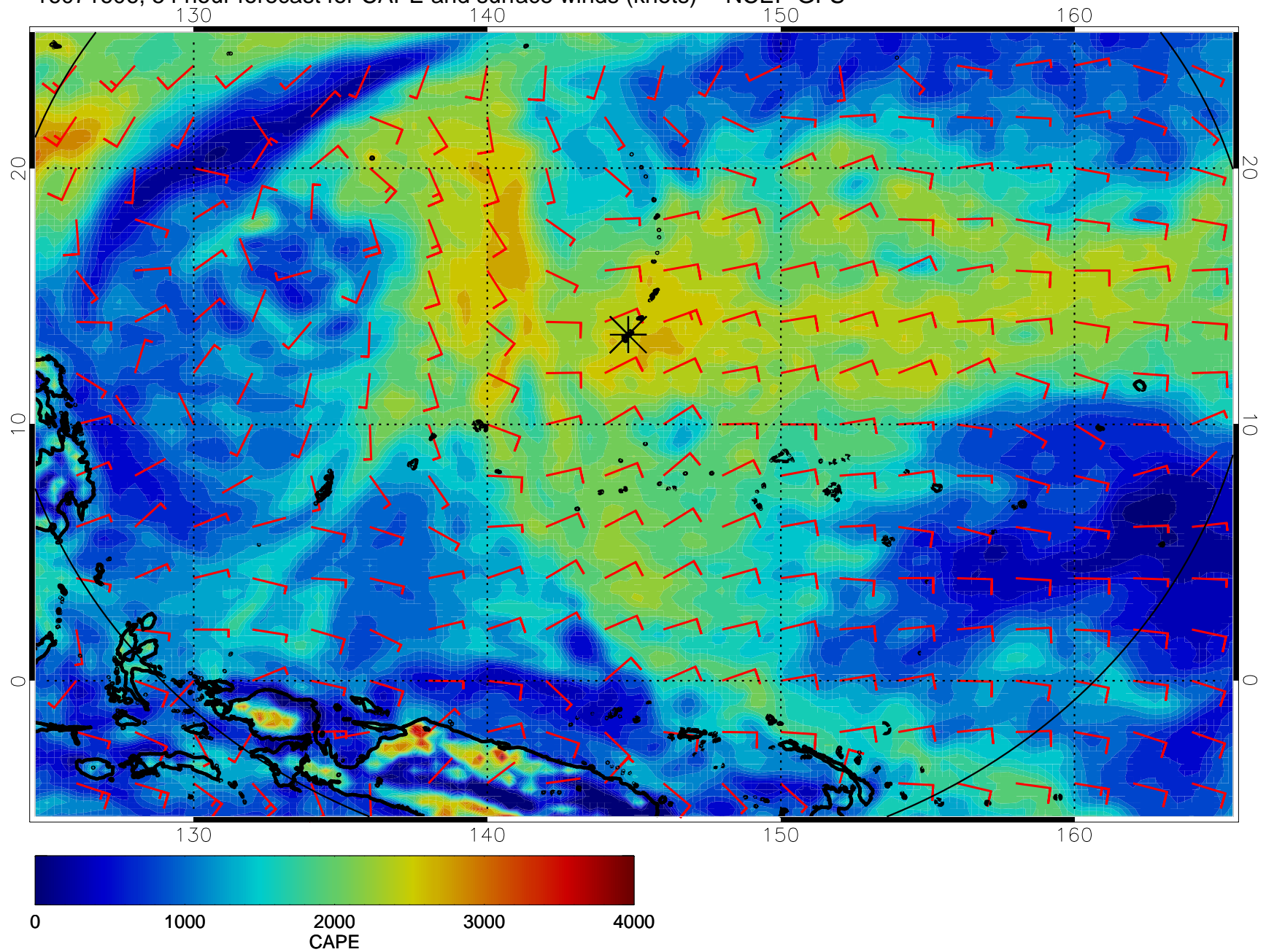


16071600, 48 hour forecast for CAPE and surface winds (knots) -- NCEP GFS

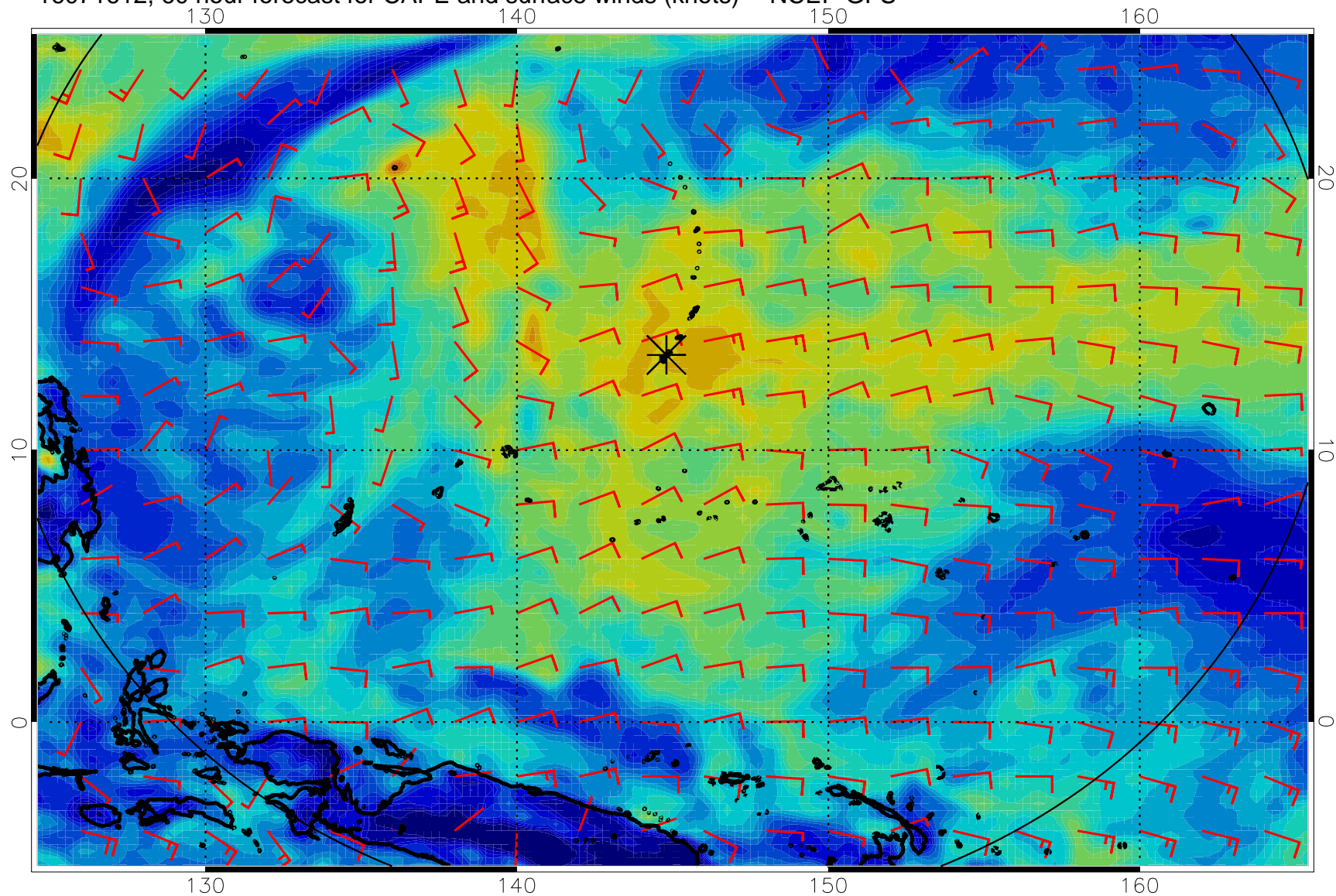




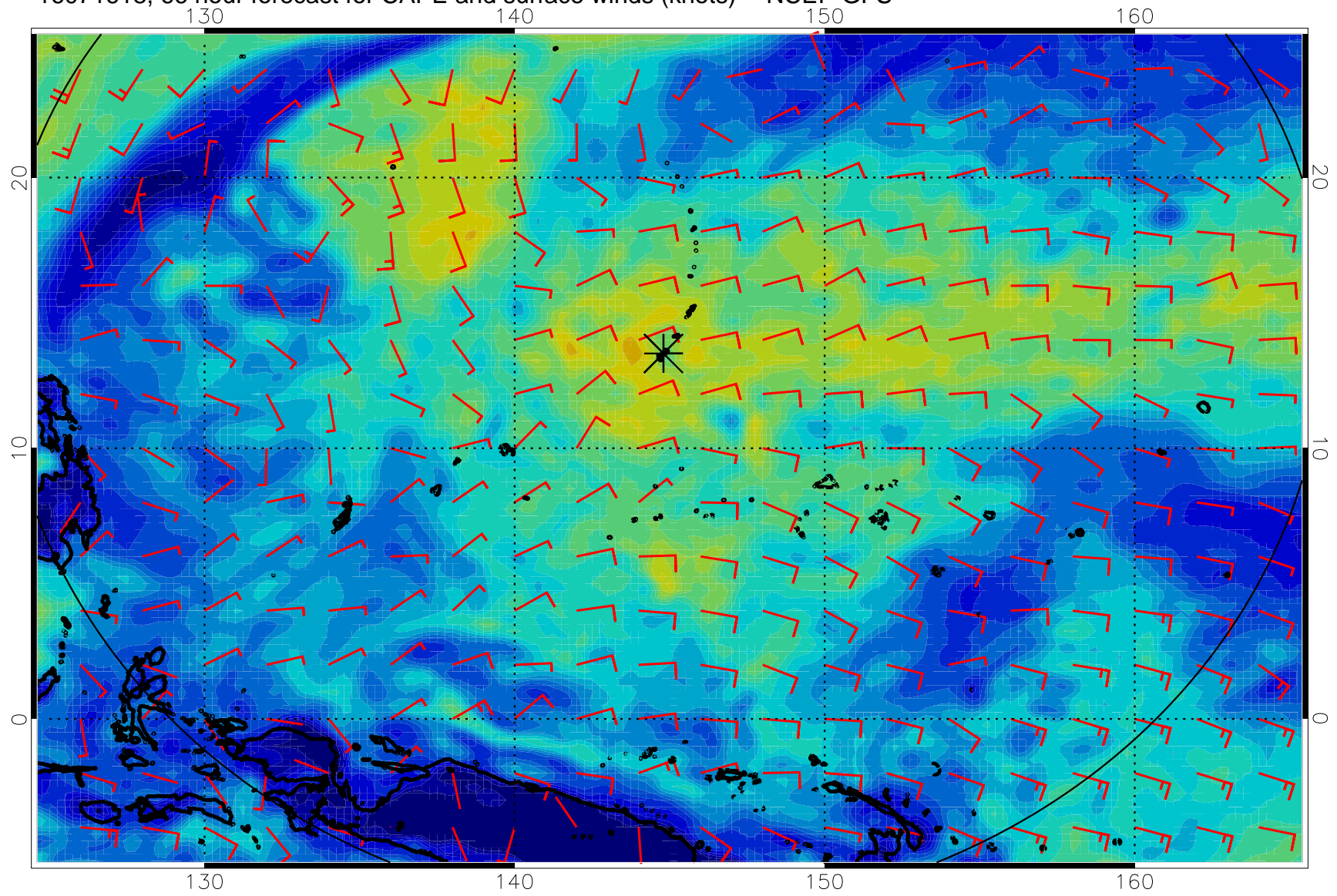
16071606, 54 hour forecast for CAPE and surface winds (knots) -- NCEP GFS



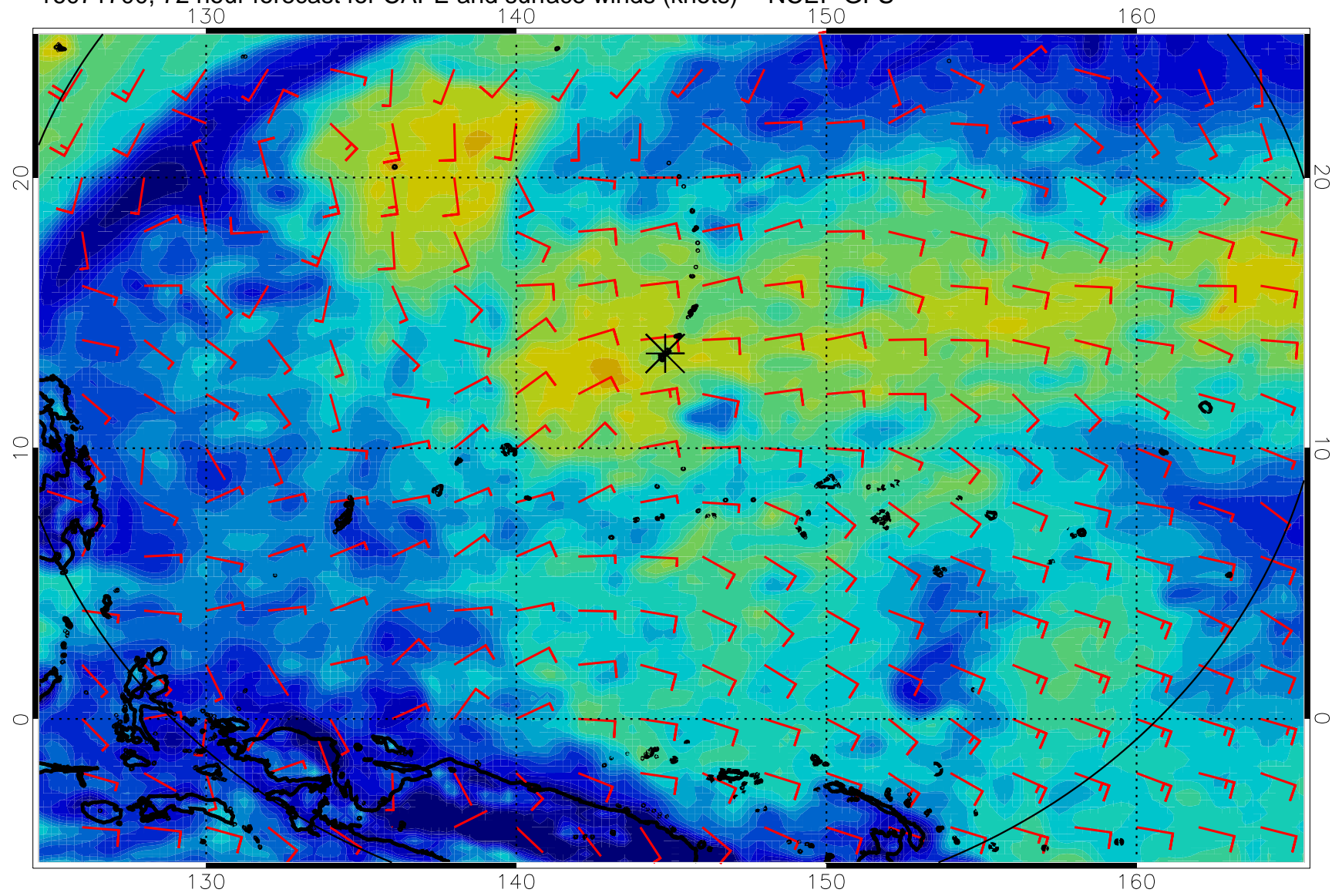
16071612, 60 hour forecast for CAPE and surface winds (knots) -- NCEP GFS



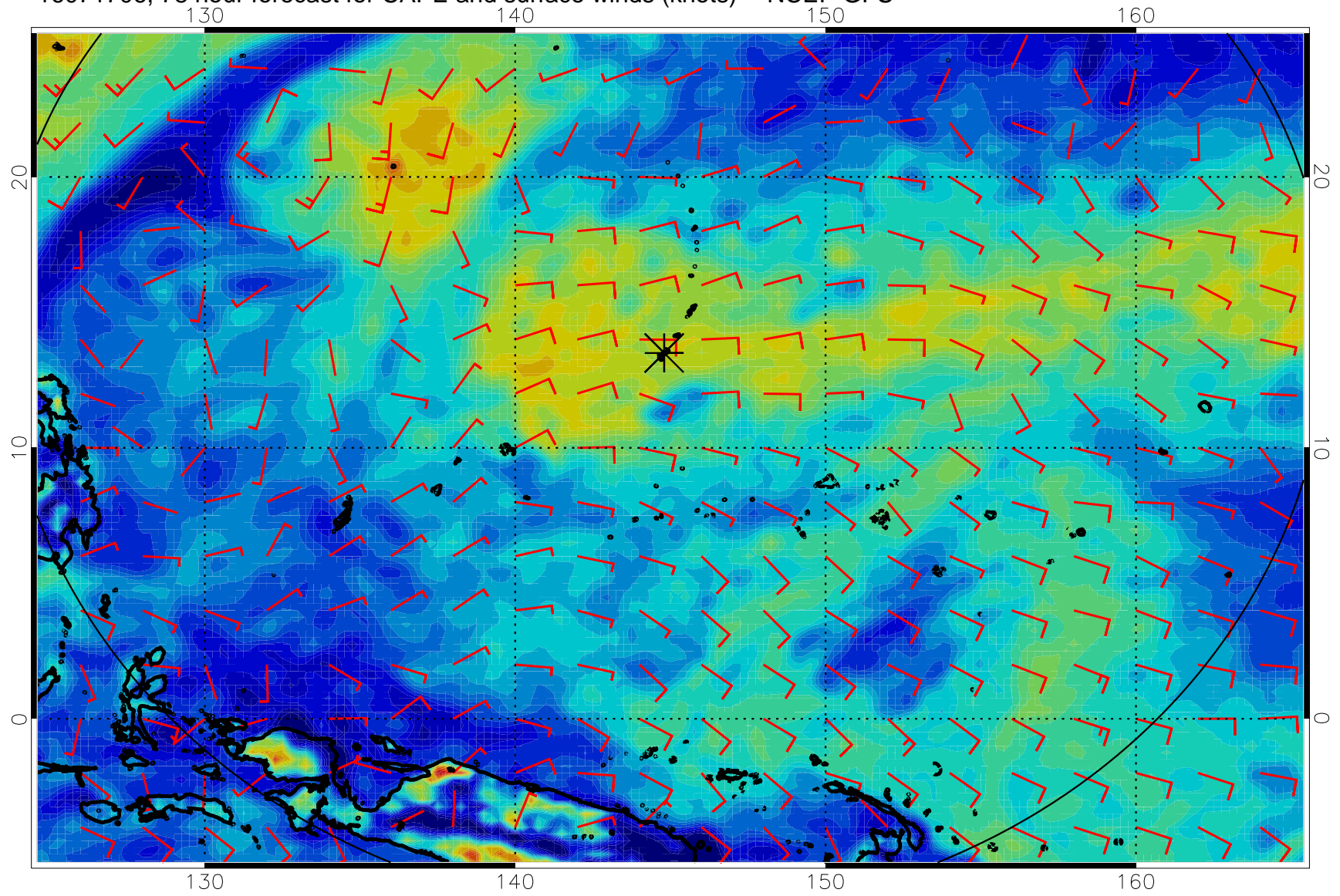
16071618, 66 hour forecast for CAPE and surface winds (knots) -- NCEP GFS



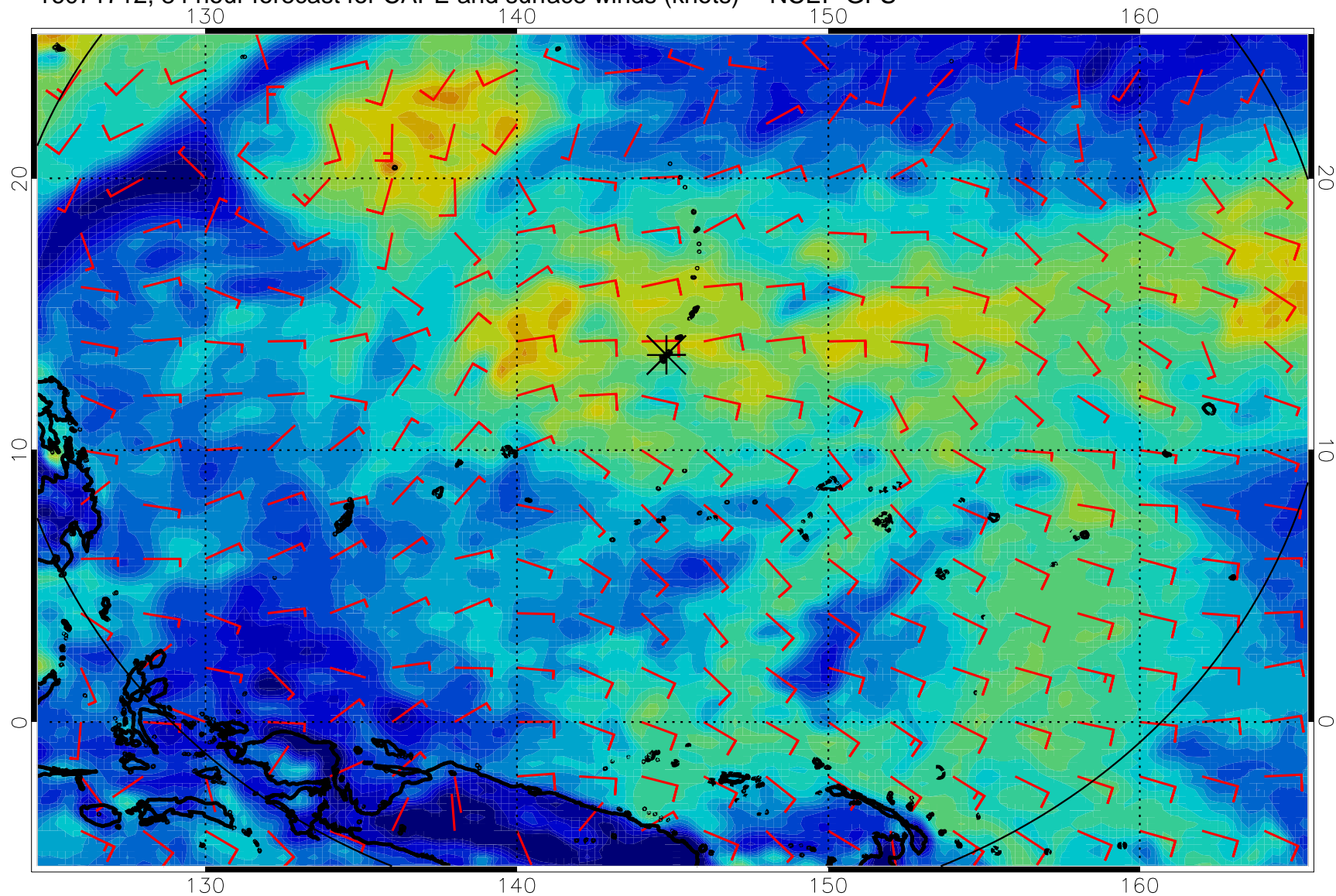
16071700, 72 hour forecast for CAPE and surface winds (knots) -- NCEP GFS



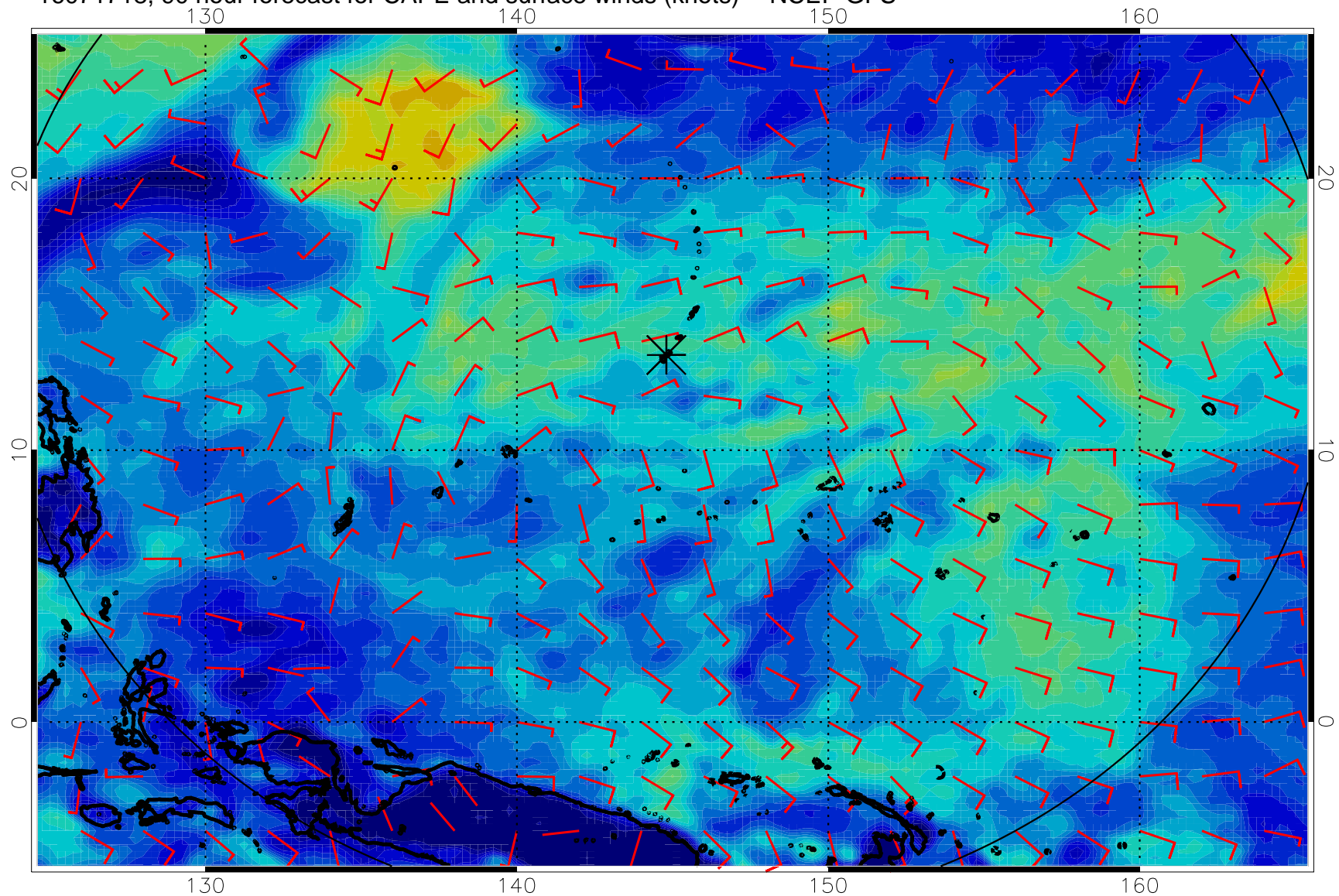
16071706, 78 hour forecast for CAPE and surface winds (knots) -- NCEP GFS



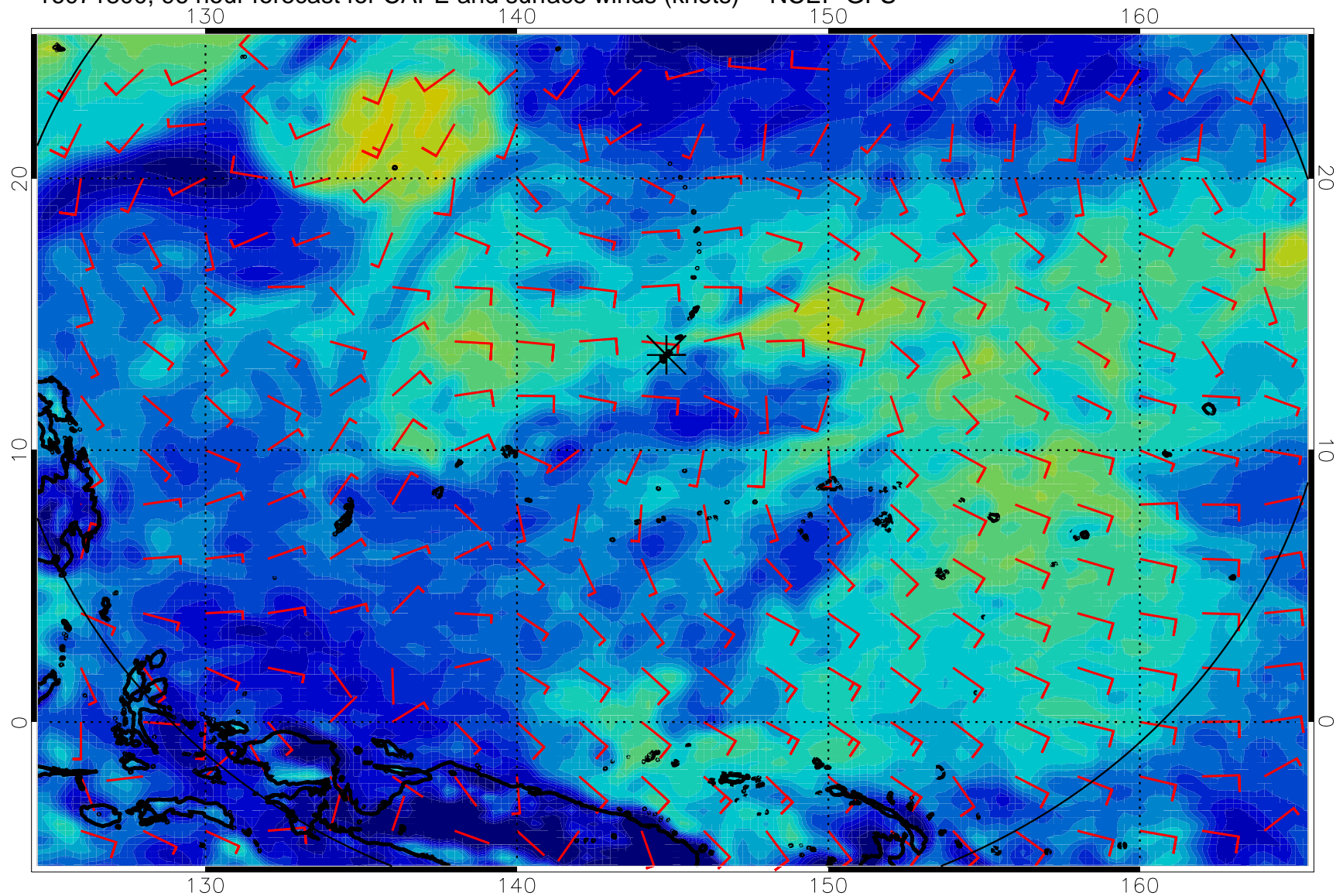
16071712, 84 hour forecast for CAPE and surface winds (knots) -- NCEP GFS



16071718, 90 hour forecast for CAPE and surface winds (knots) -- NCEP GFS

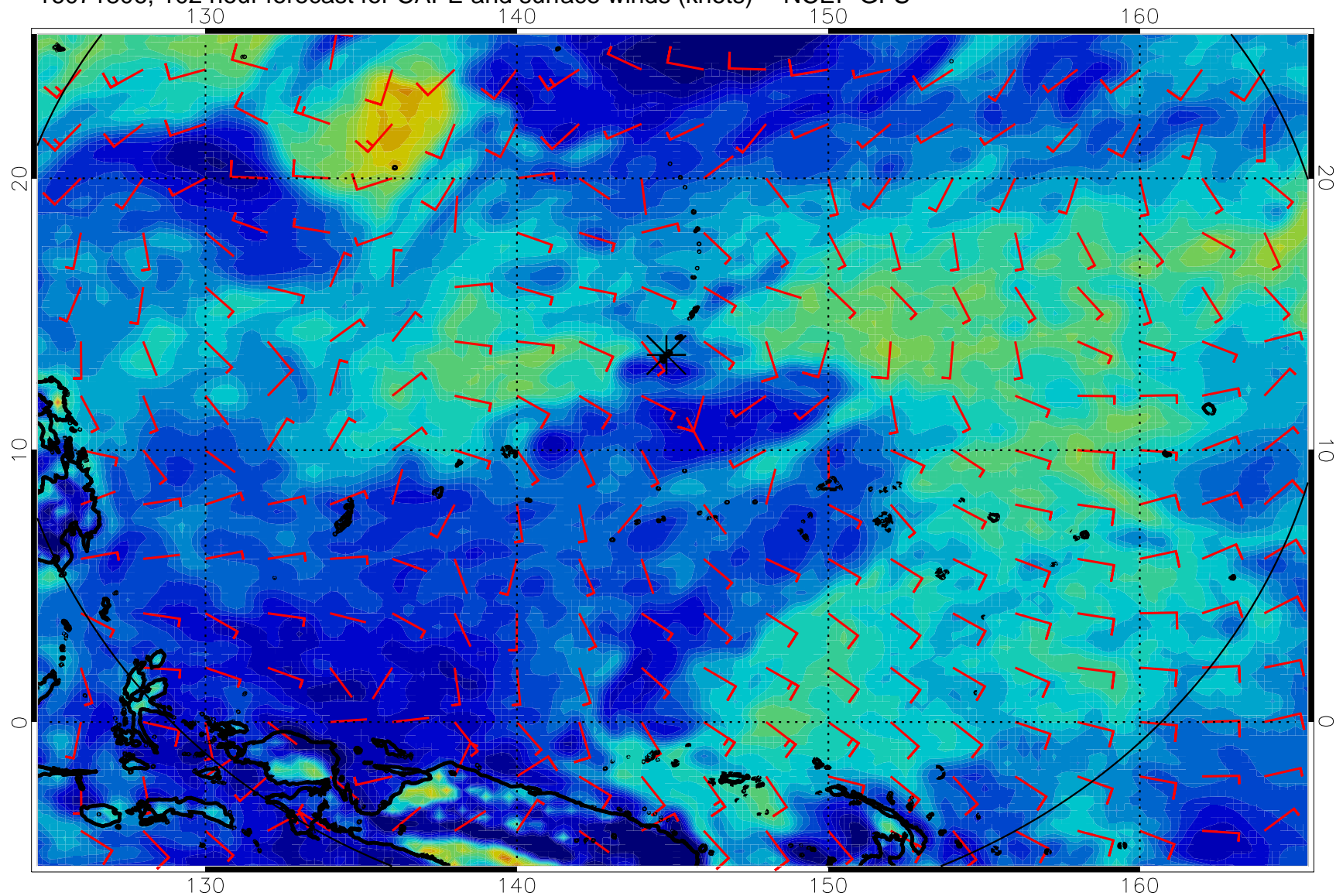


16071800, 96 hour forecast for CAPE and surface winds (knots) -- NCEP GFS

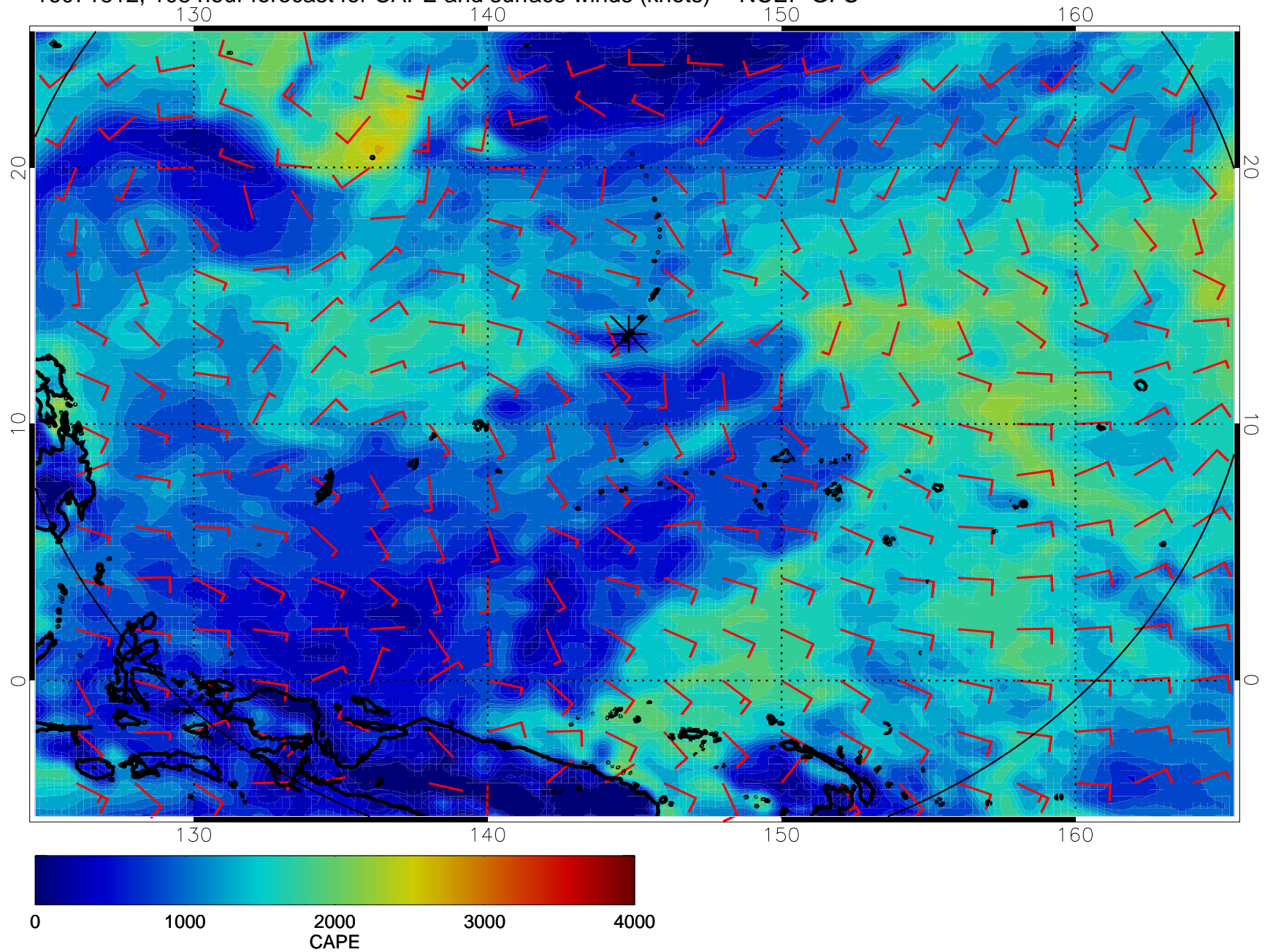




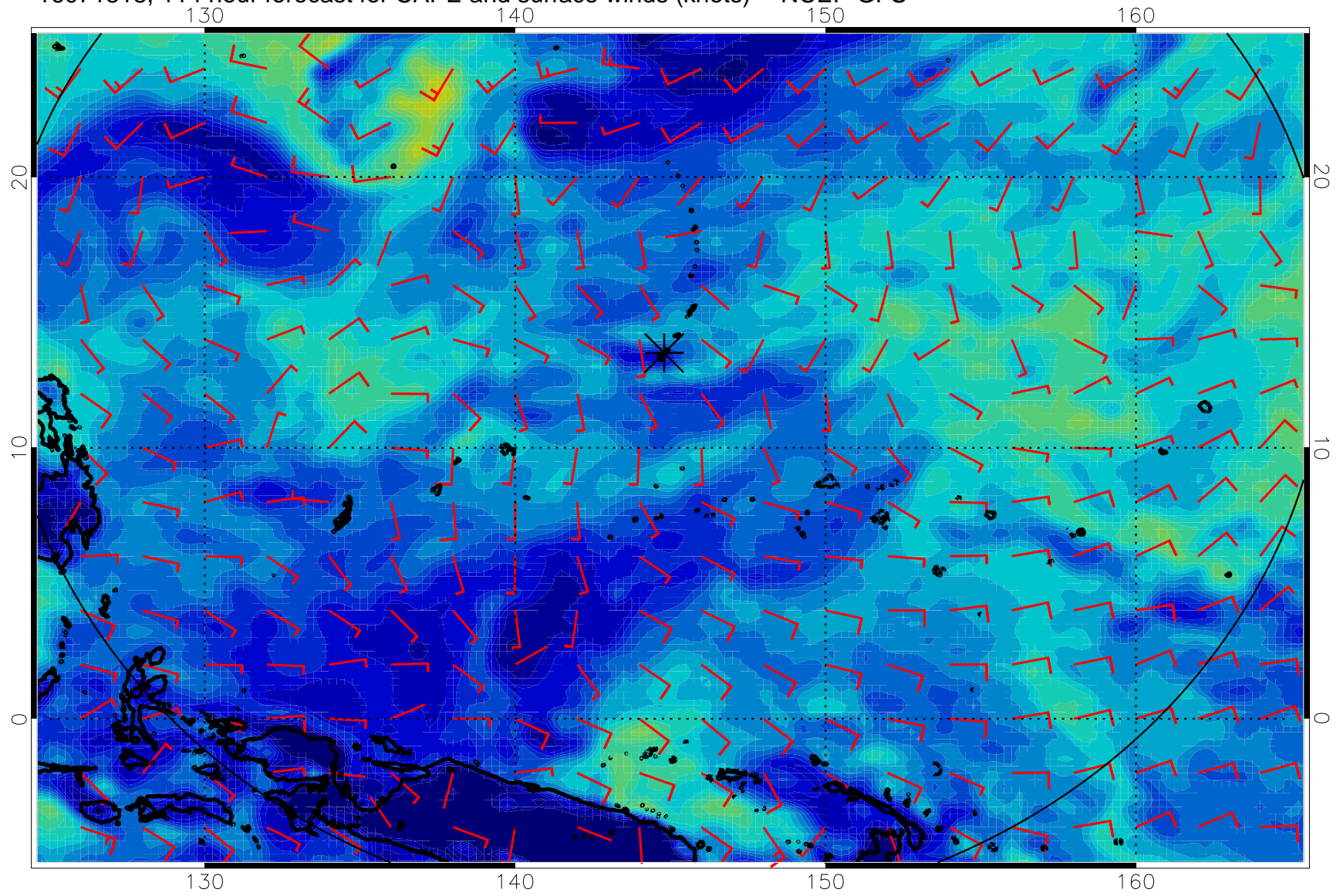
16071806, 102 hour forecast for CAPE and surface winds (knots) -- NCEP GFS



16071812, 108 hour forecast for CAPE and surface winds (knots) -- NCEP GFS



16071818, 114 hour forecast for CAPE and surface winds (knots) -- NCEP GFS



16071900, 120 hour forecast for CAPE and surface winds (knots) -- NCEP GFS

