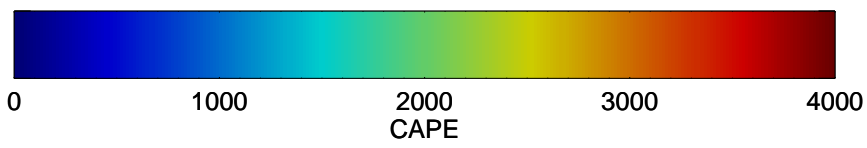
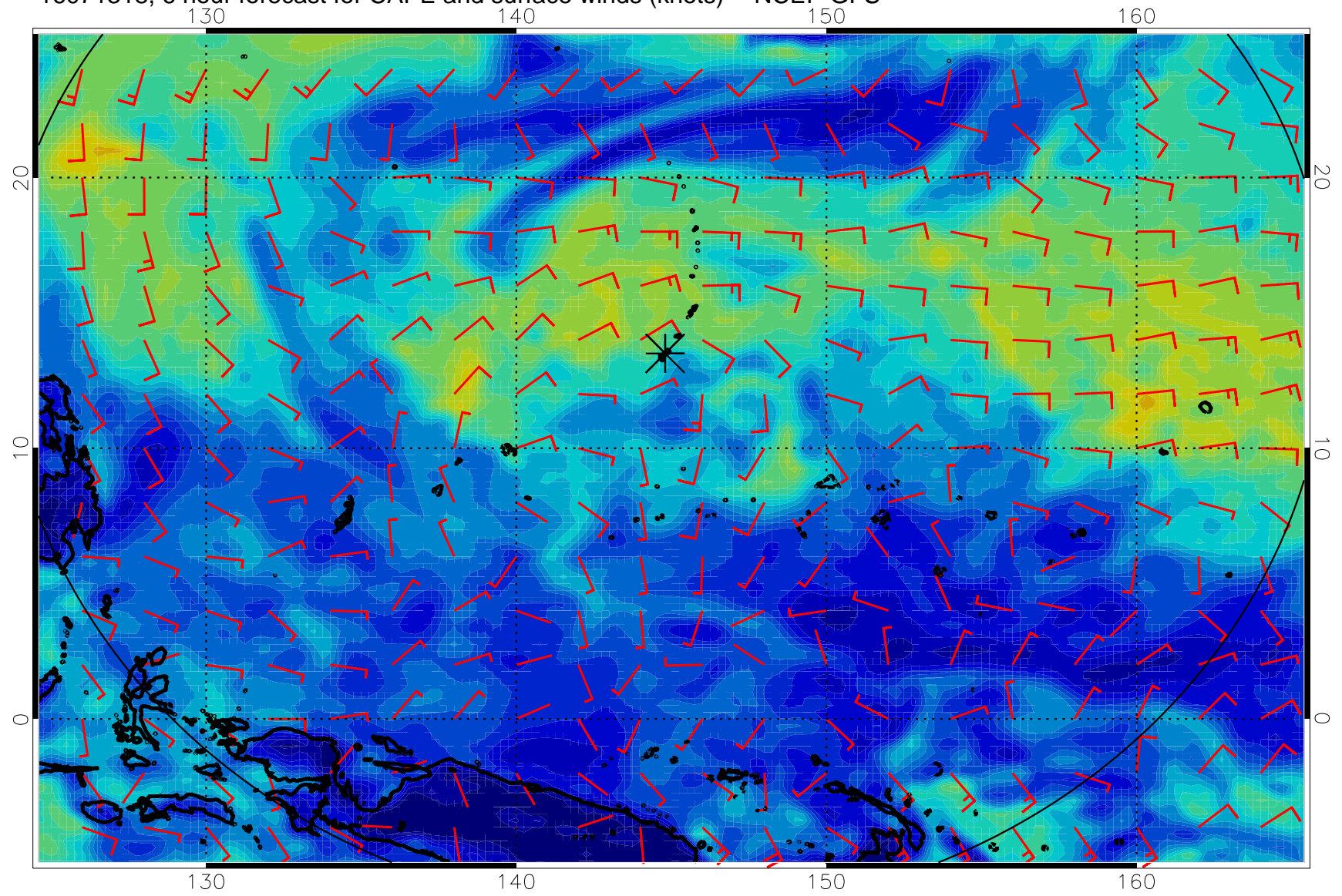
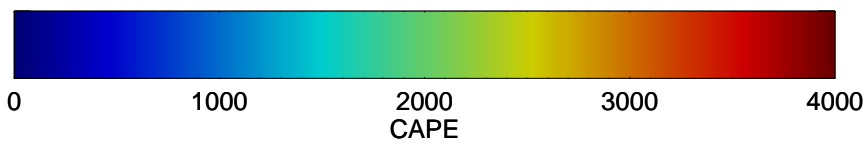
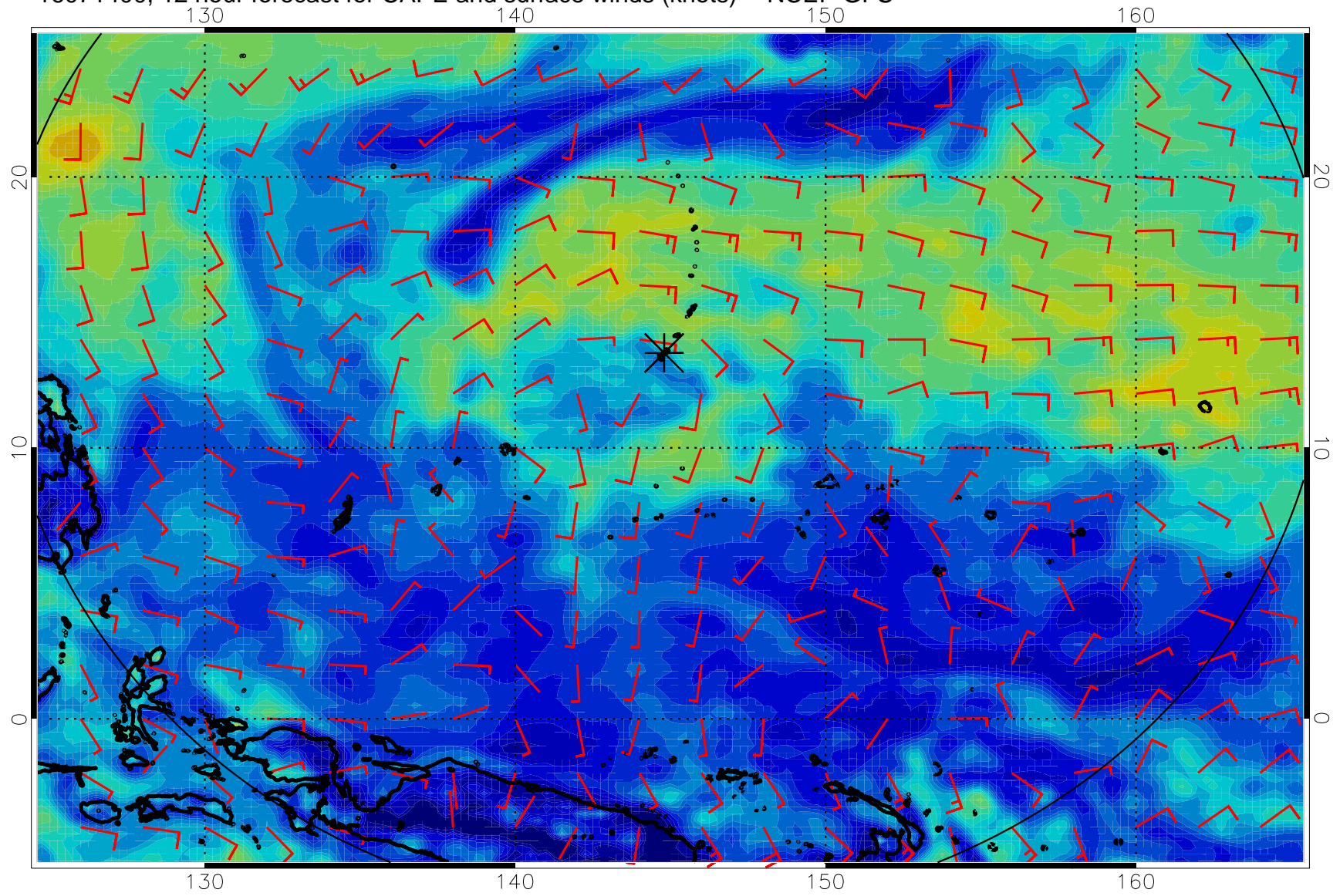


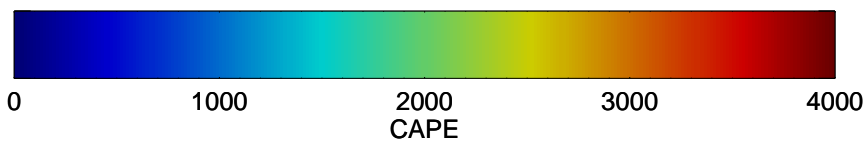
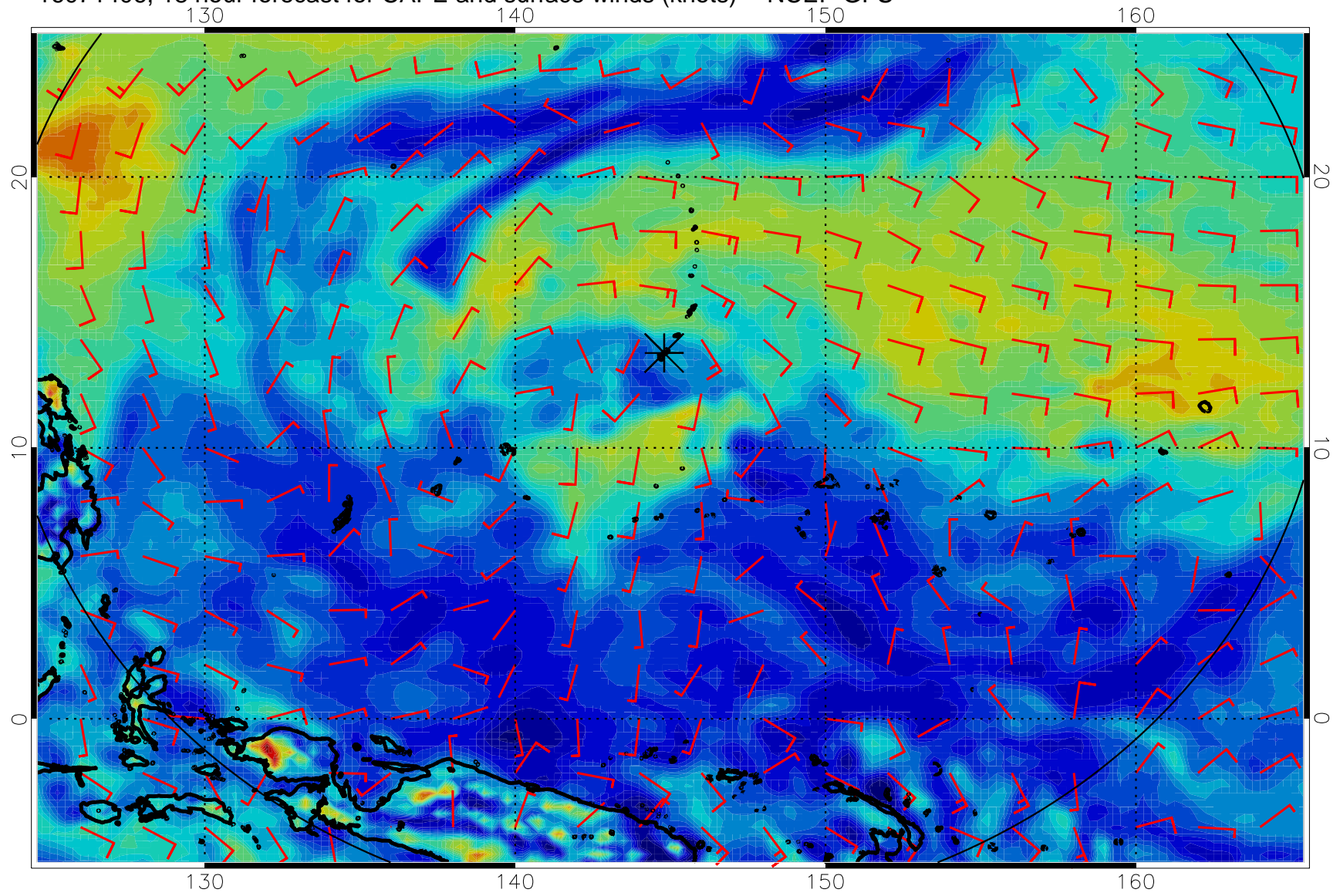
16071318, 6 hour forecast for CAPE and surface winds (knots) -- NCEP GFS



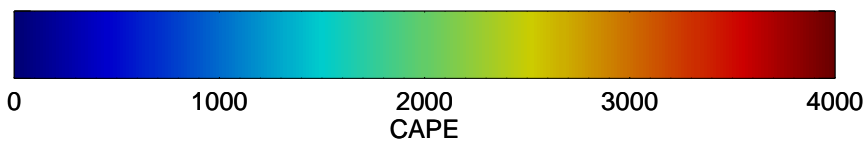
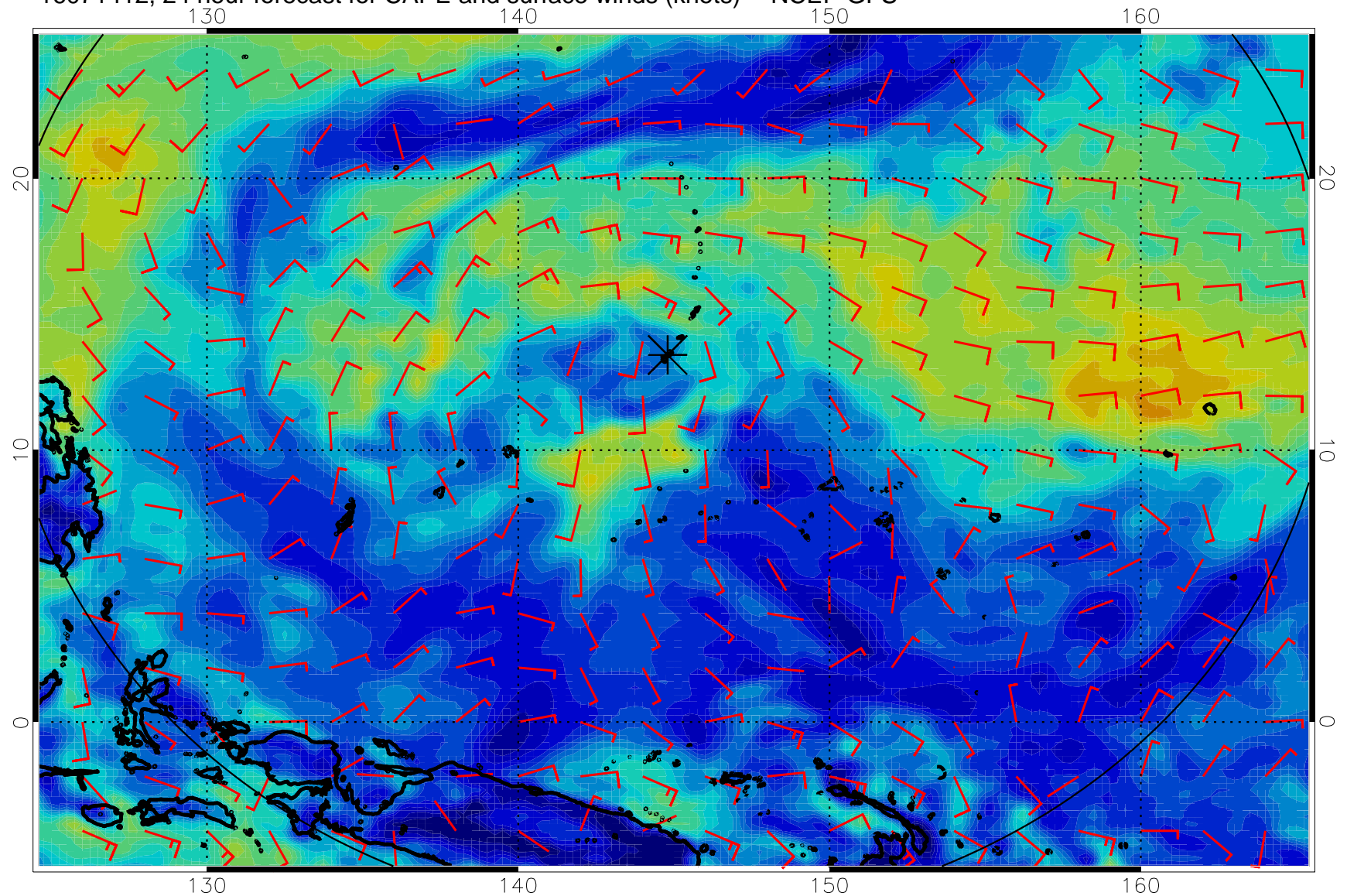
16071400, 12 hour forecast for CAPE and surface winds (knots) -- NCEP GFS



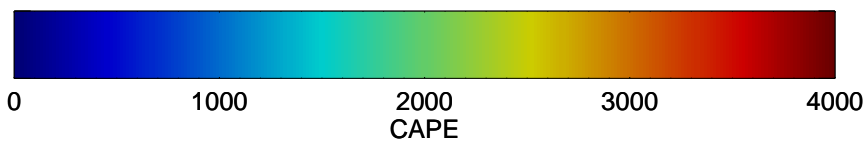
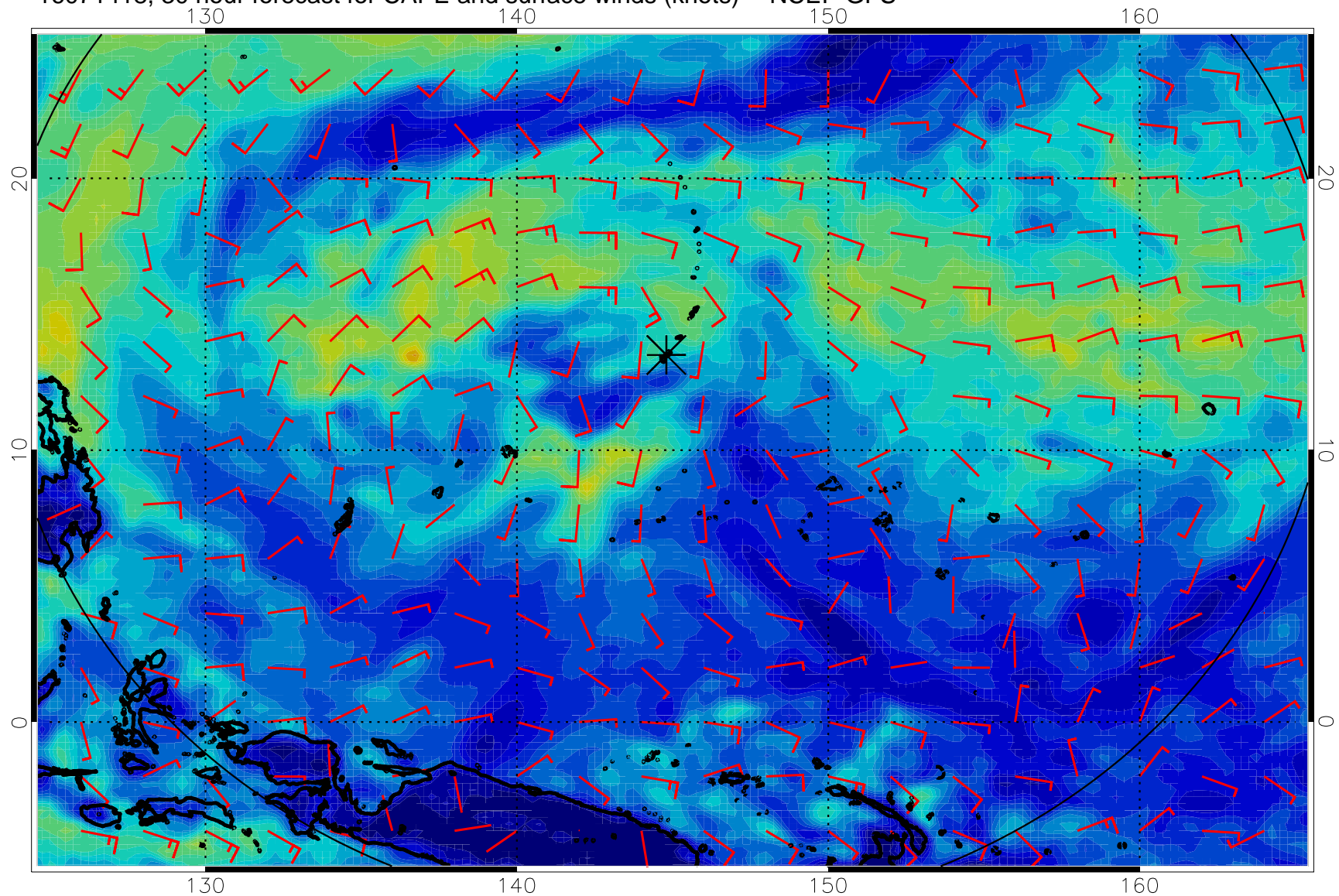
16071406, 18 hour forecast for CAPE and surface winds (knots) -- NCEP GFS



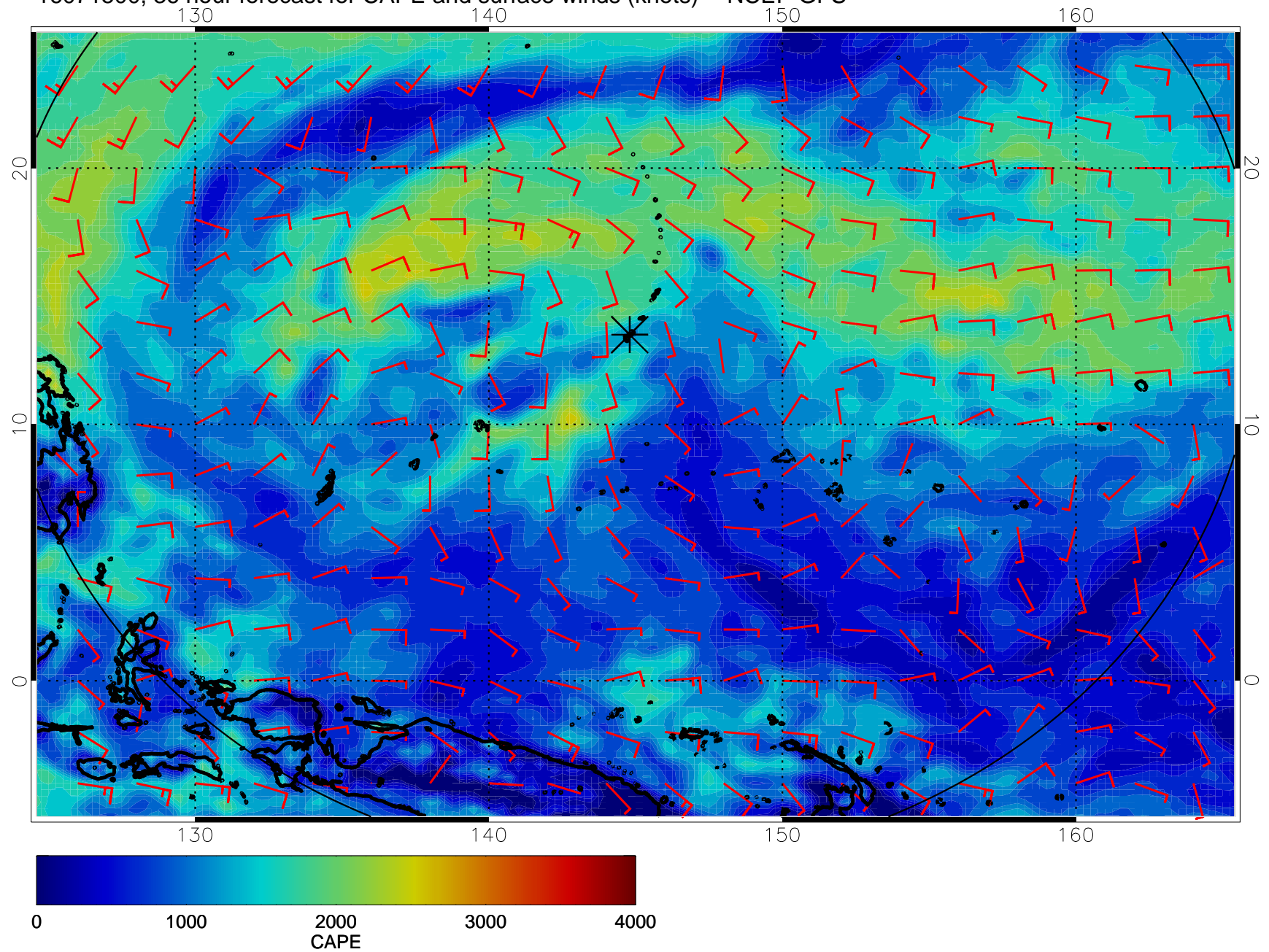
16071412, 24 hour forecast for CAPE and surface winds (knots) -- NCEP GFS



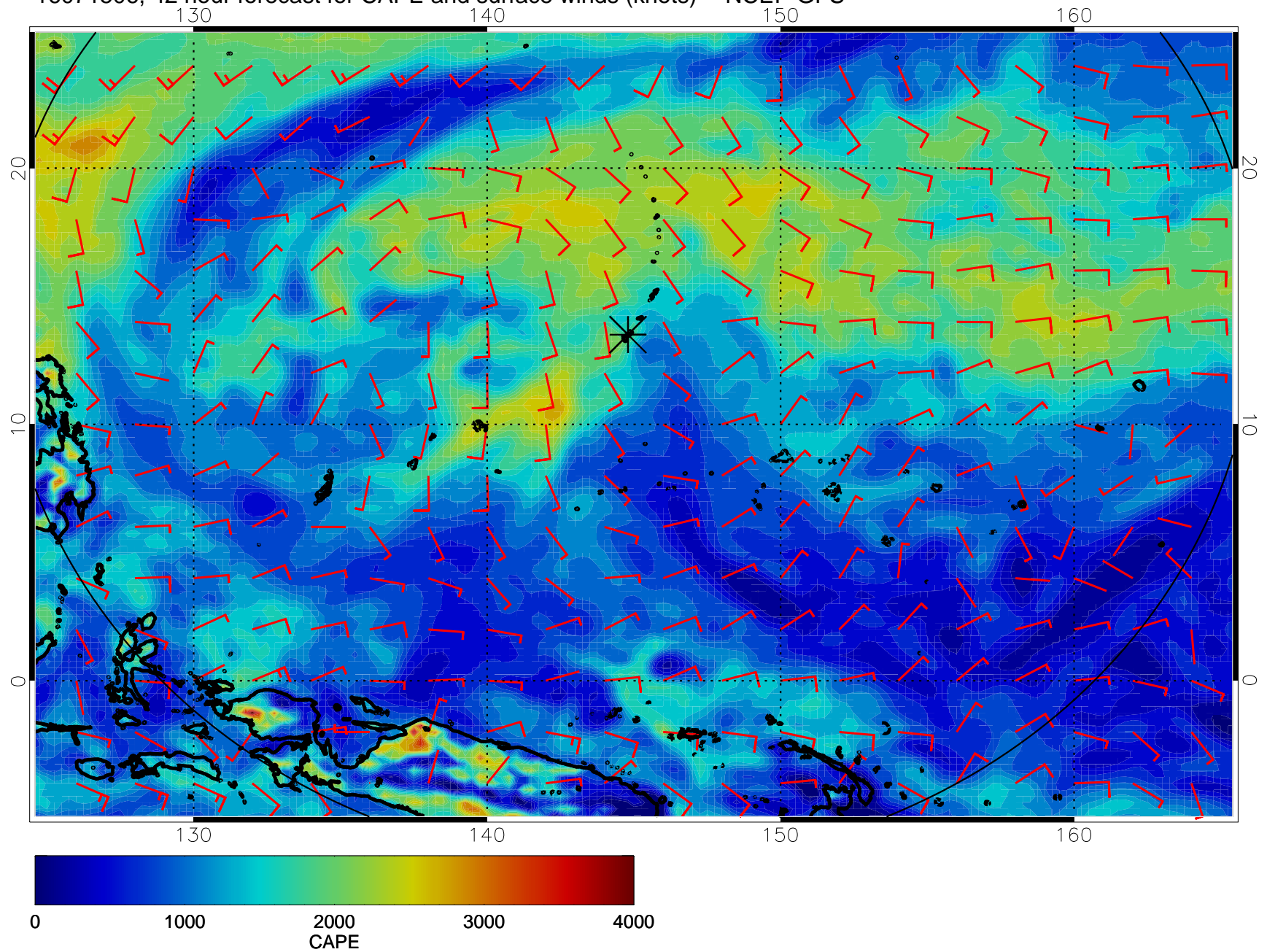
16071418, 30 hour forecast for CAPE and surface winds (knots) -- NCEP GFS



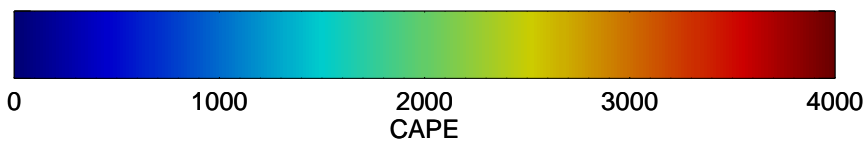
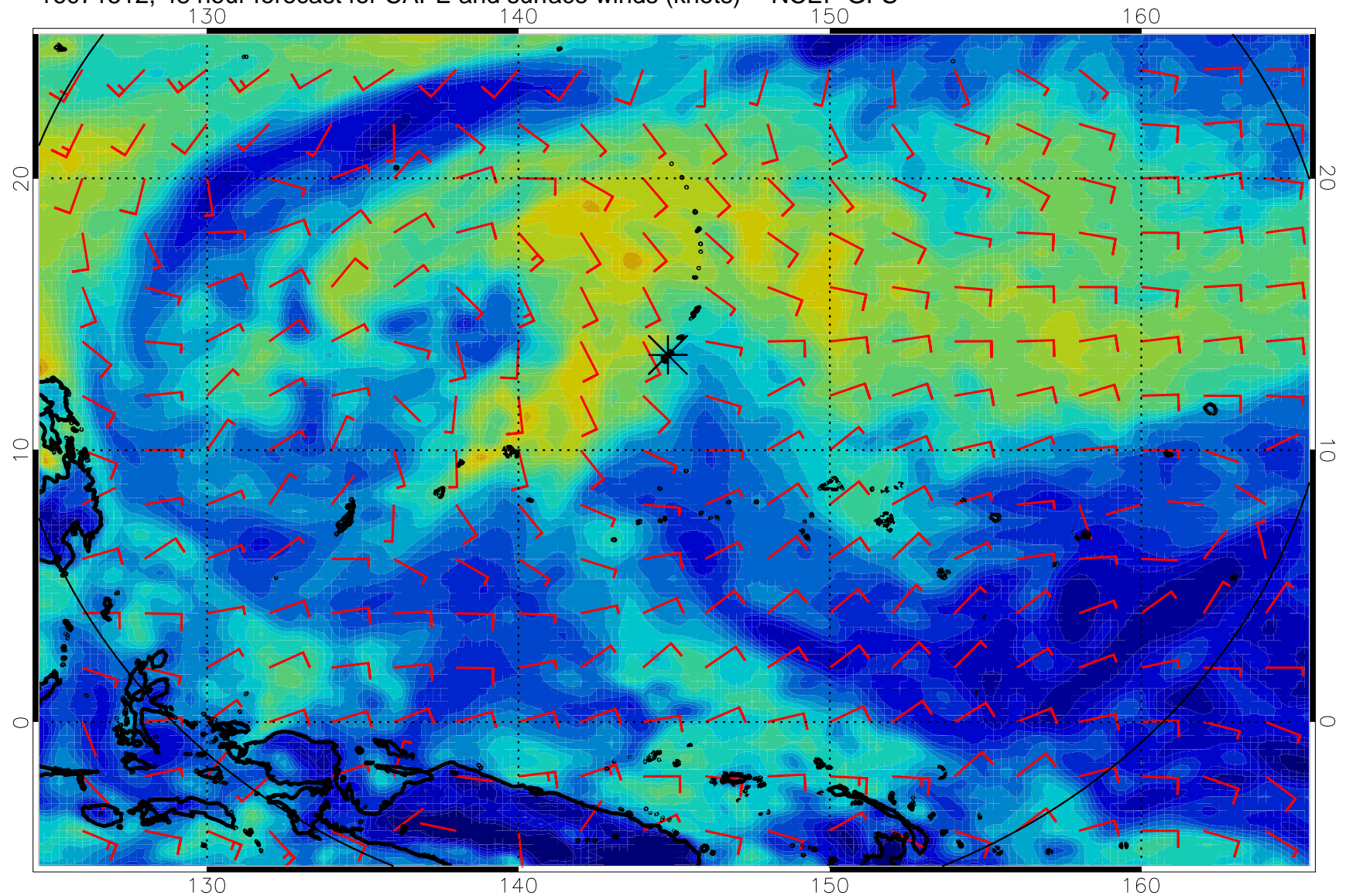
16071500, 36 hour forecast for CAPE and surface winds (knots) -- NCEP GFS



16071506, 42 hour forecast for CAPE and surface winds (knots) -- NCEP GFS

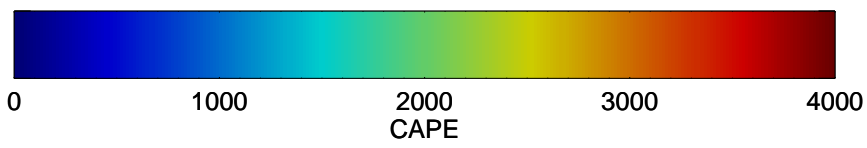
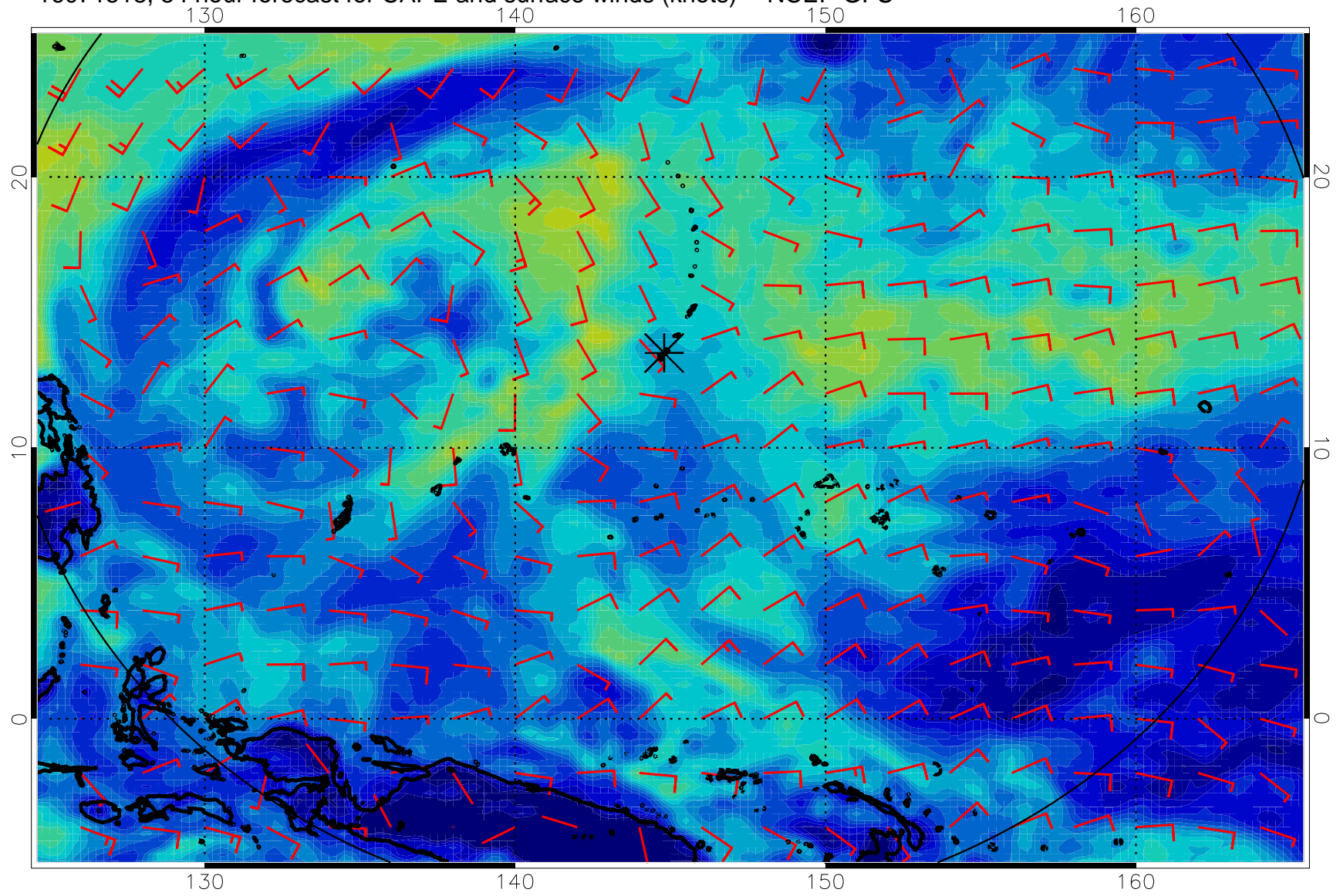


16071512, 48 hour forecast for CAPE and surface winds (knots) -- NCEP GFS

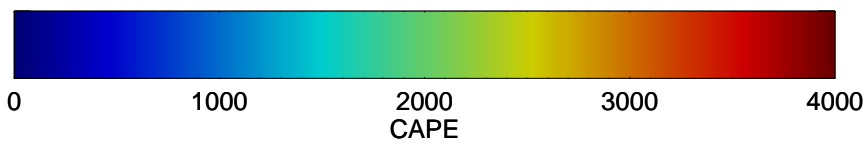
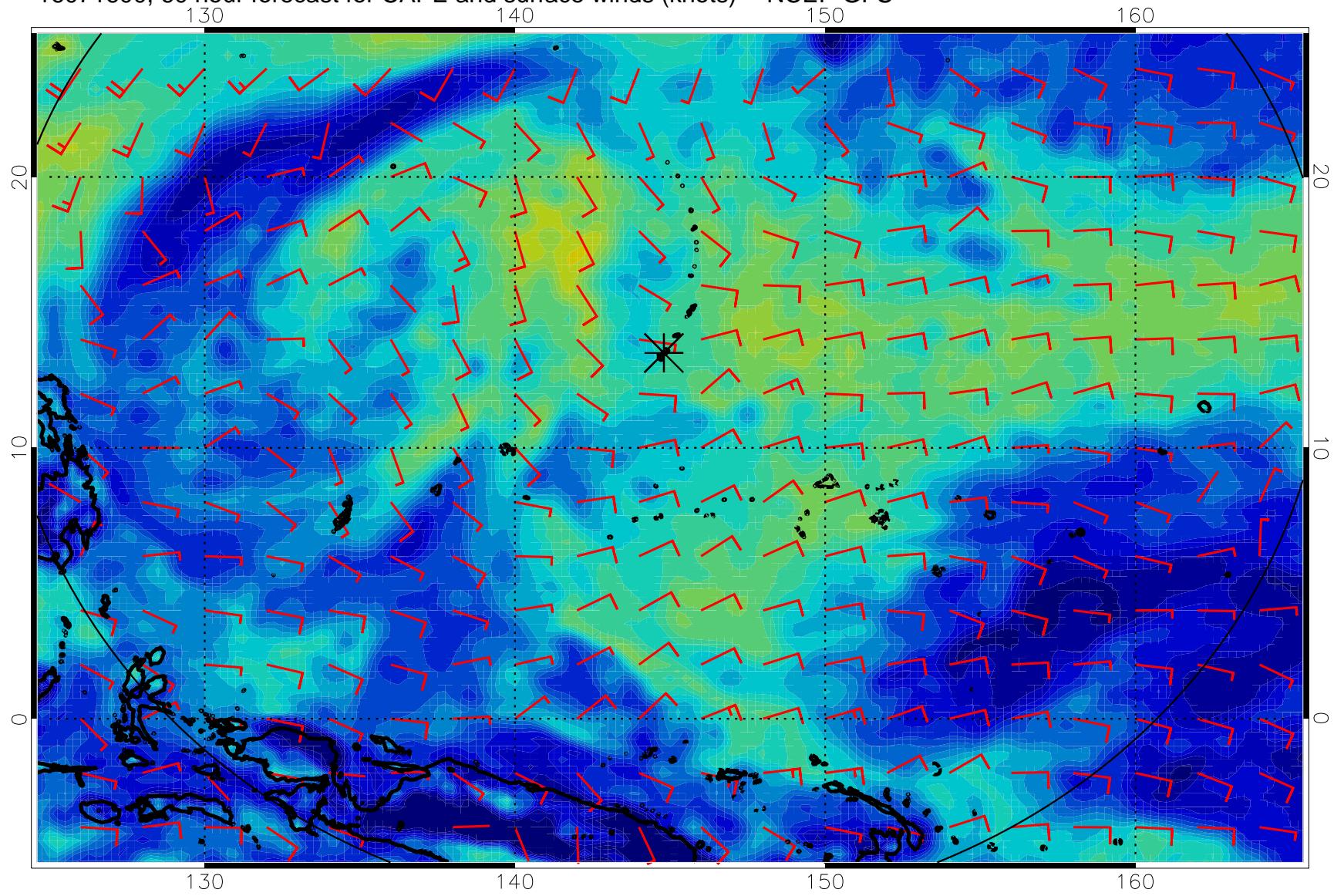




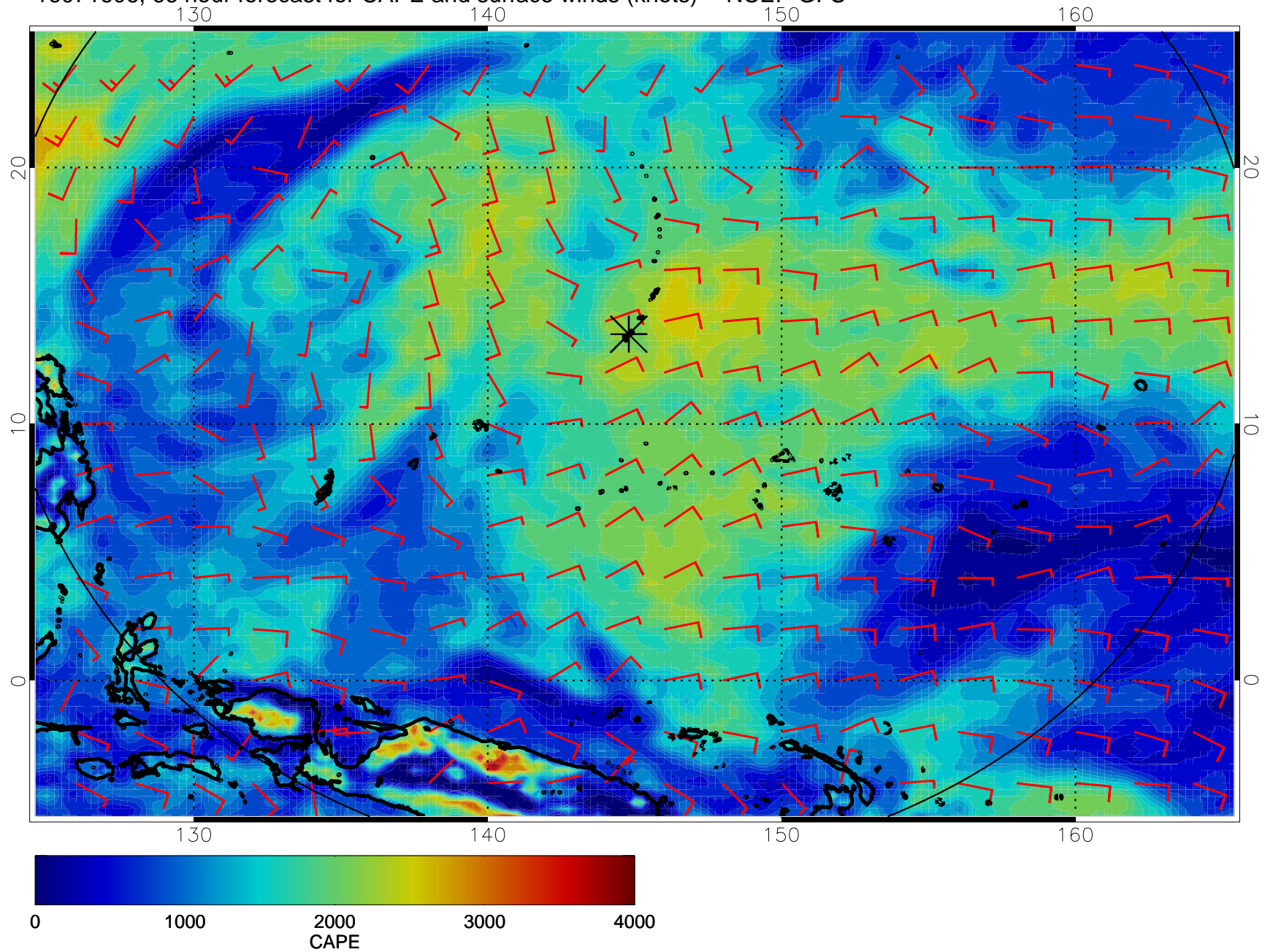
16071518, 54 hour forecast for CAPE and surface winds (knots) -- NCEP GFS



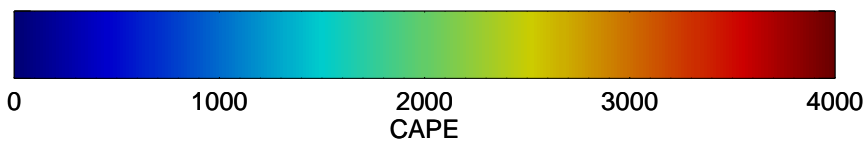
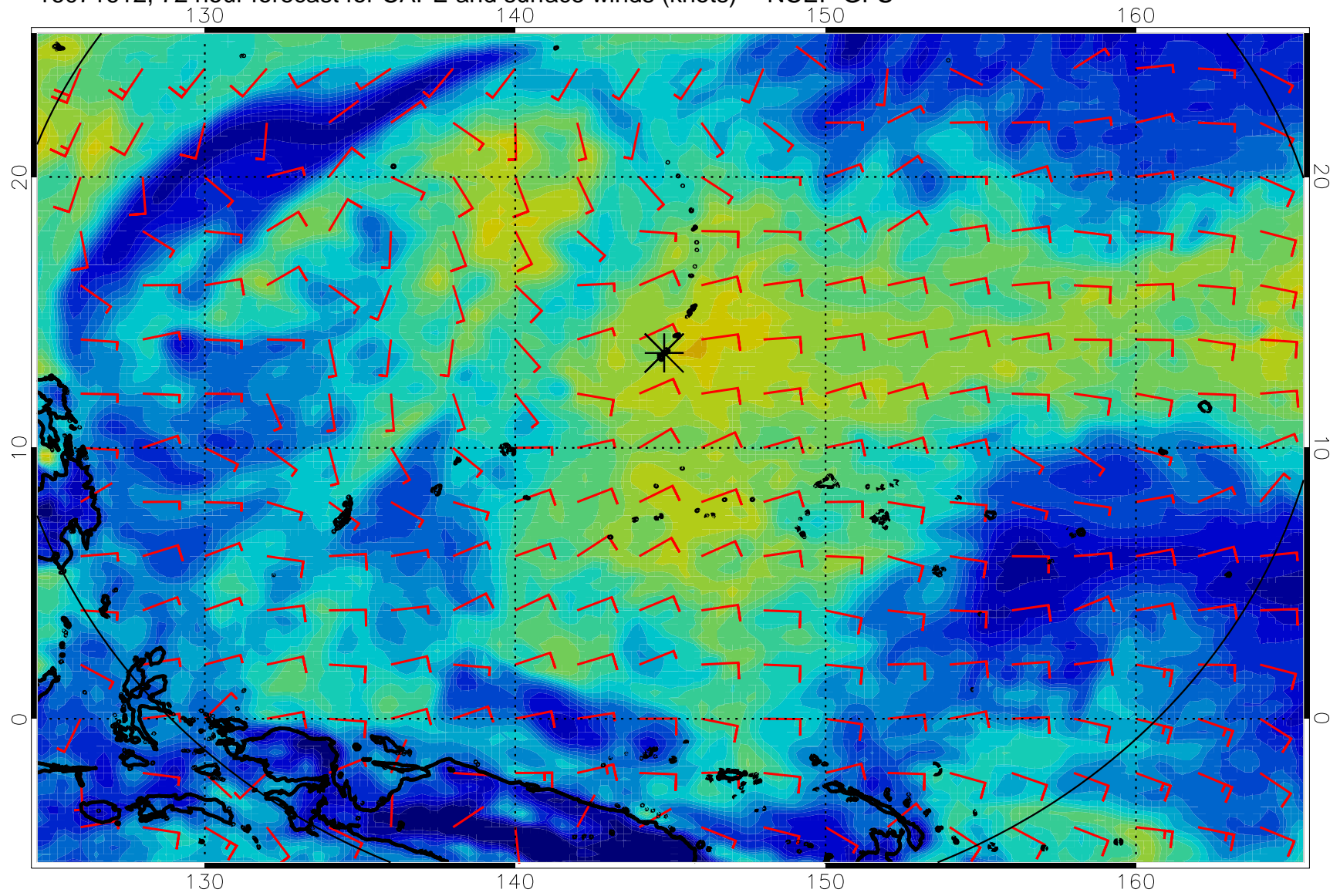
16071600, 60 hour forecast for CAPE and surface winds (knots) -- NCEP GFS



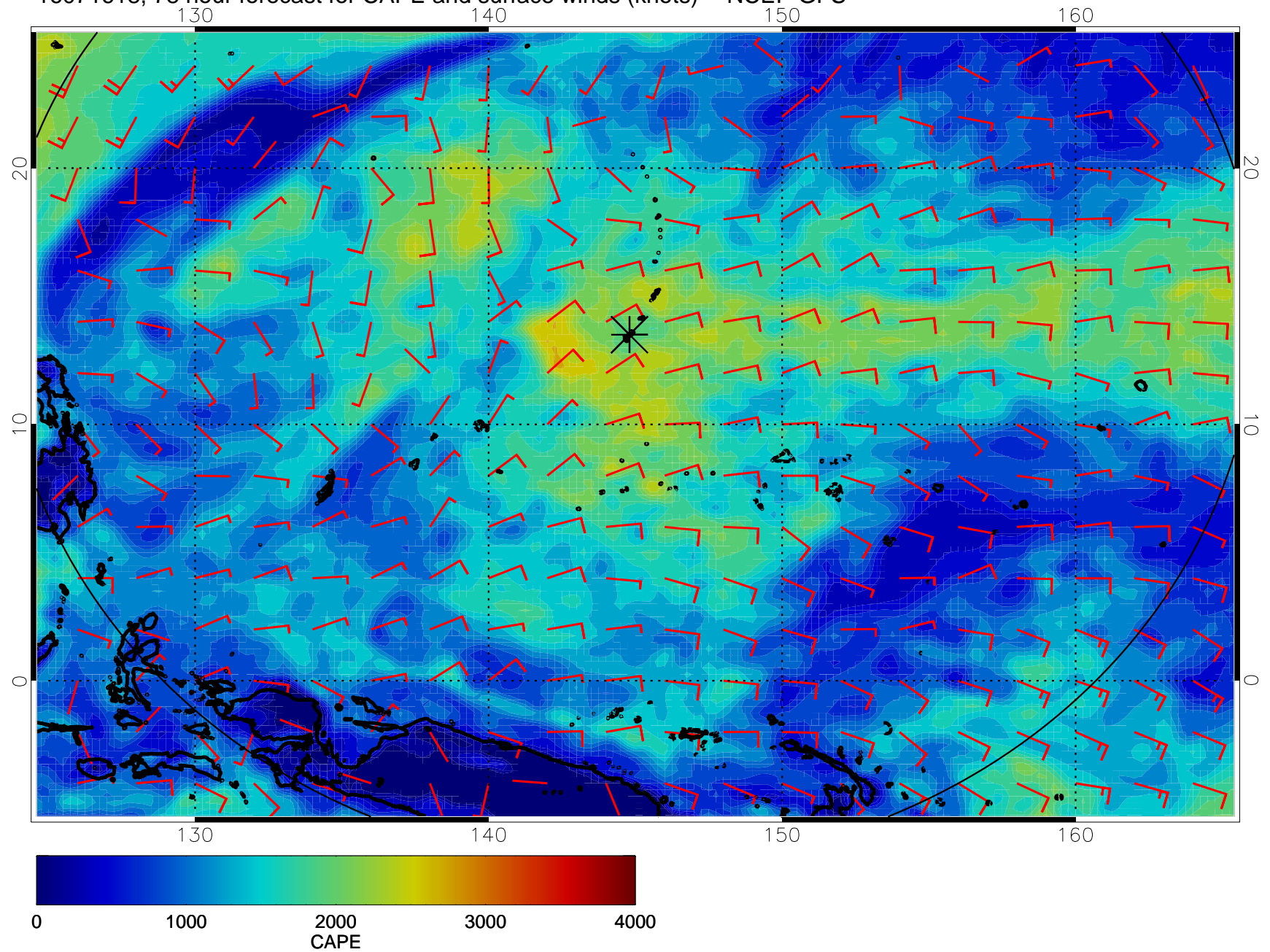
16071606, 66 hour forecast for CAPE and surface winds (knots) -- NCEP GFS



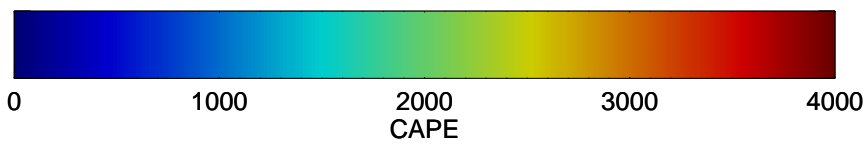
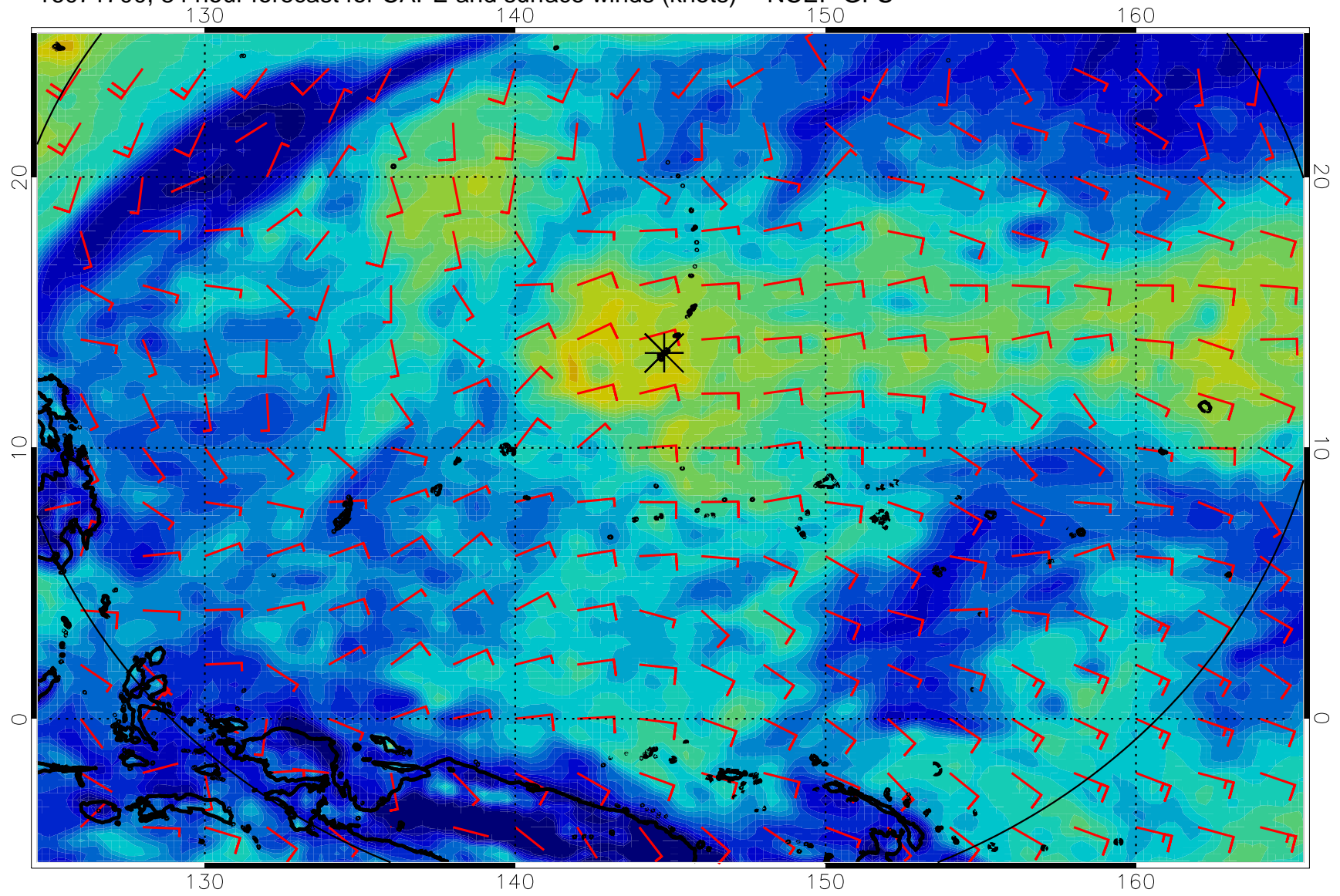
16071612, 72 hour forecast for CAPE and surface winds (knots) -- NCEP GFS



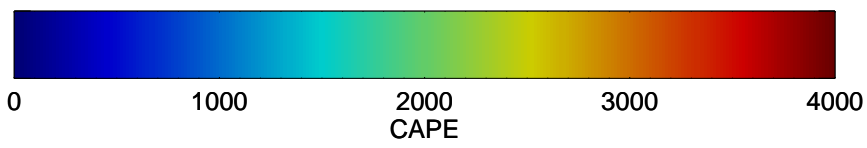
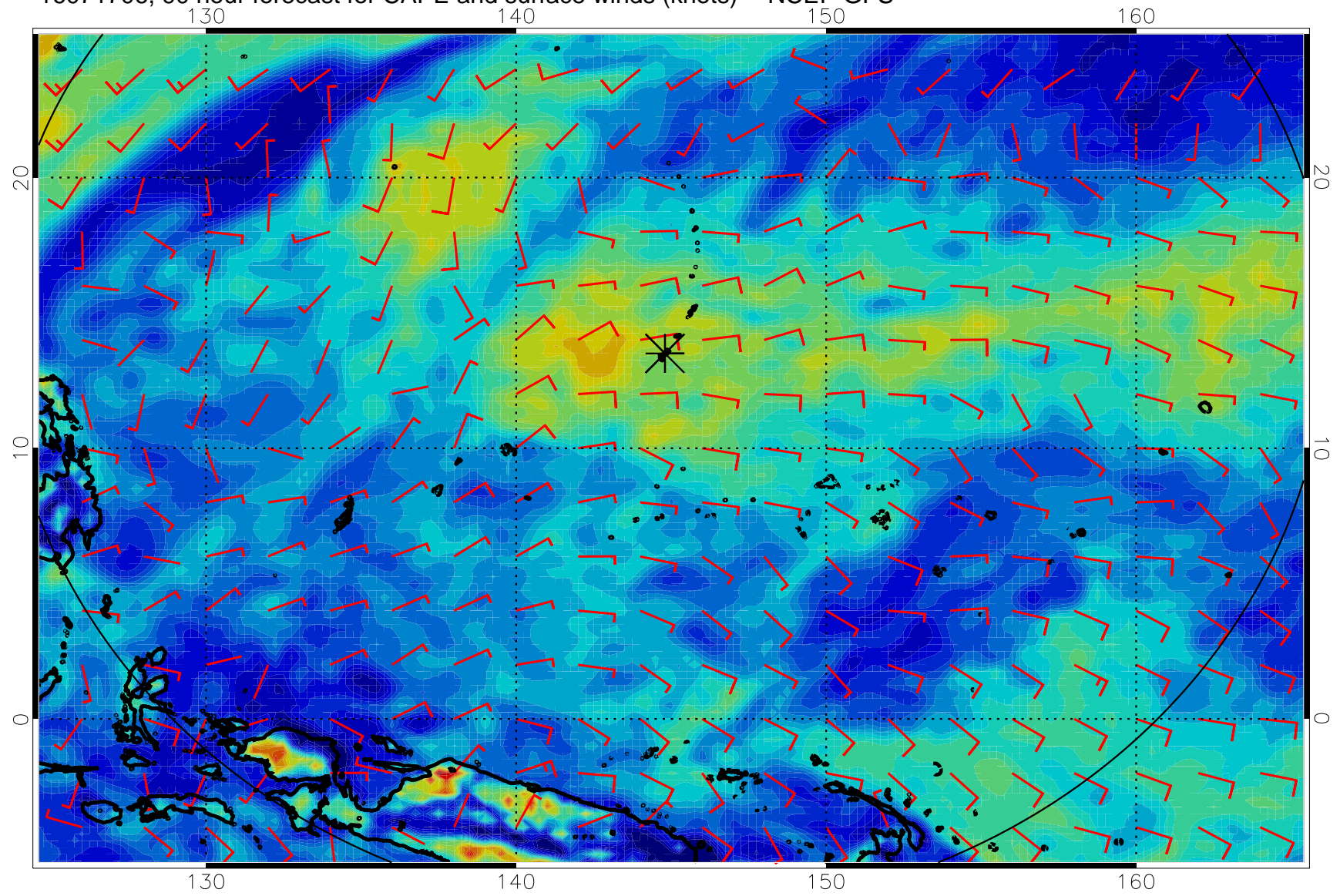
16071618, 78 hour forecast for CAPE and surface winds (knots) -- NCEP GFS



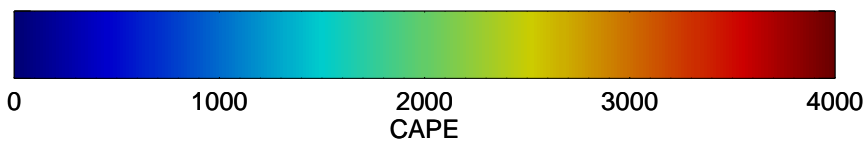
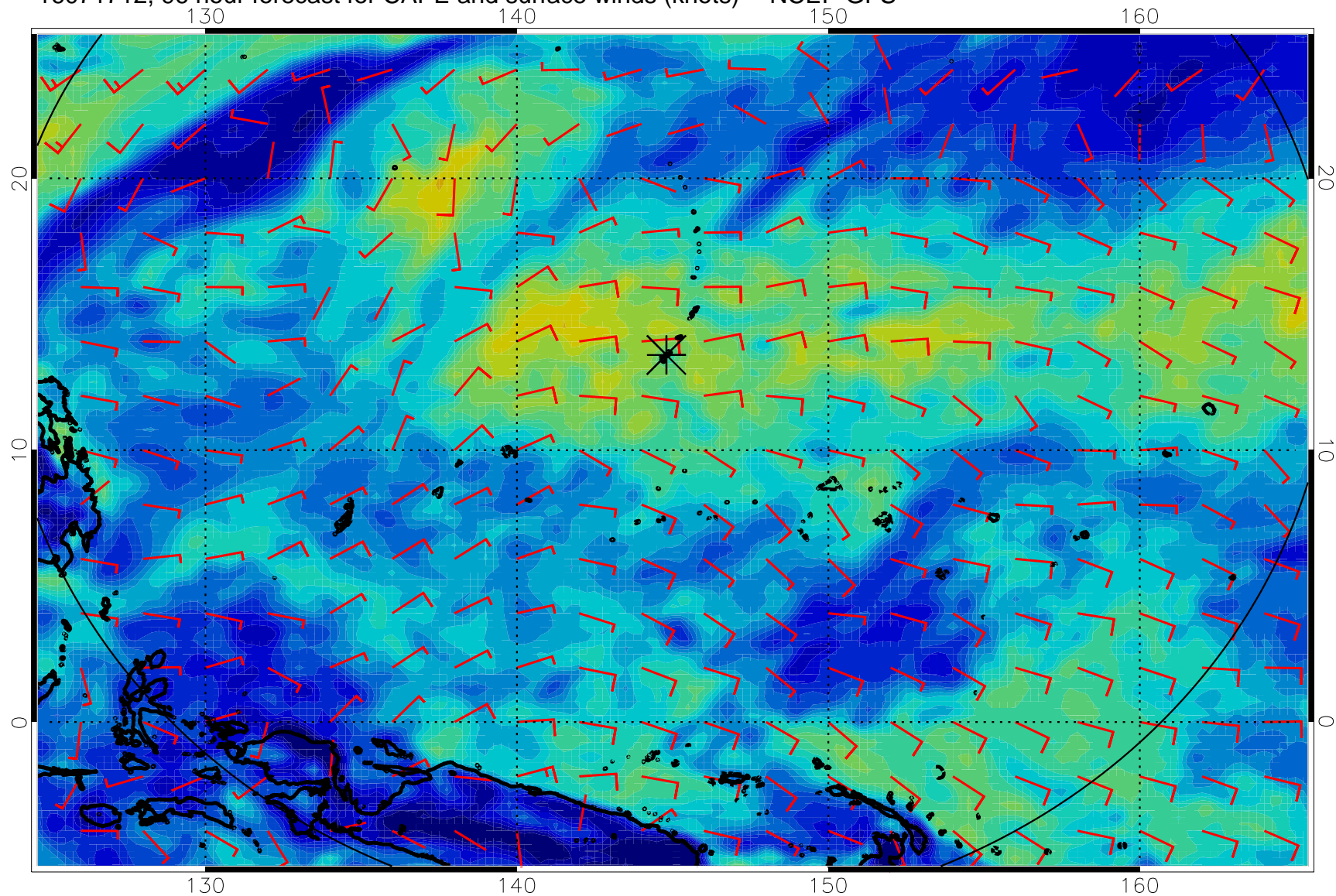
16071700, 84 hour forecast for CAPE and surface winds (knots) -- NCEP GFS



16071706, 90 hour forecast for CAPE and surface winds (knots) -- NCEP GFS

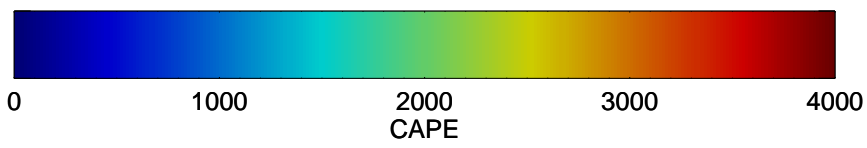
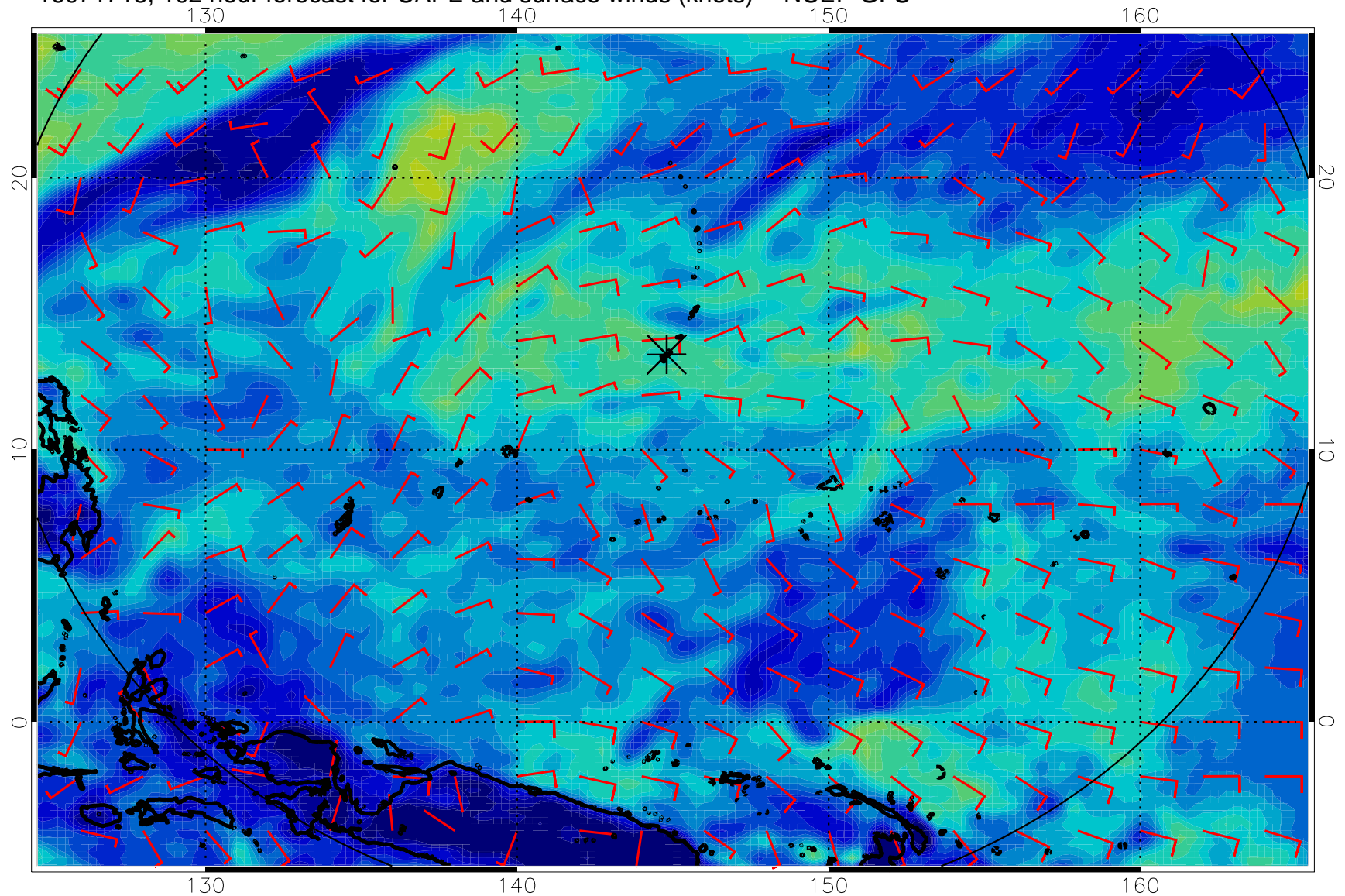


16071712, 96 hour forecast for CAPE and surface winds (knots) -- NCEP GFS

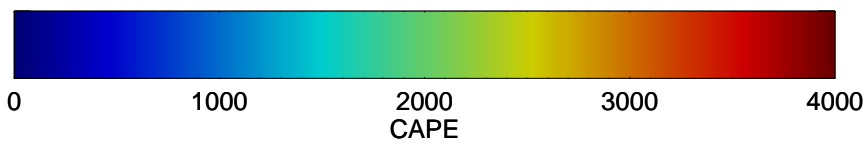
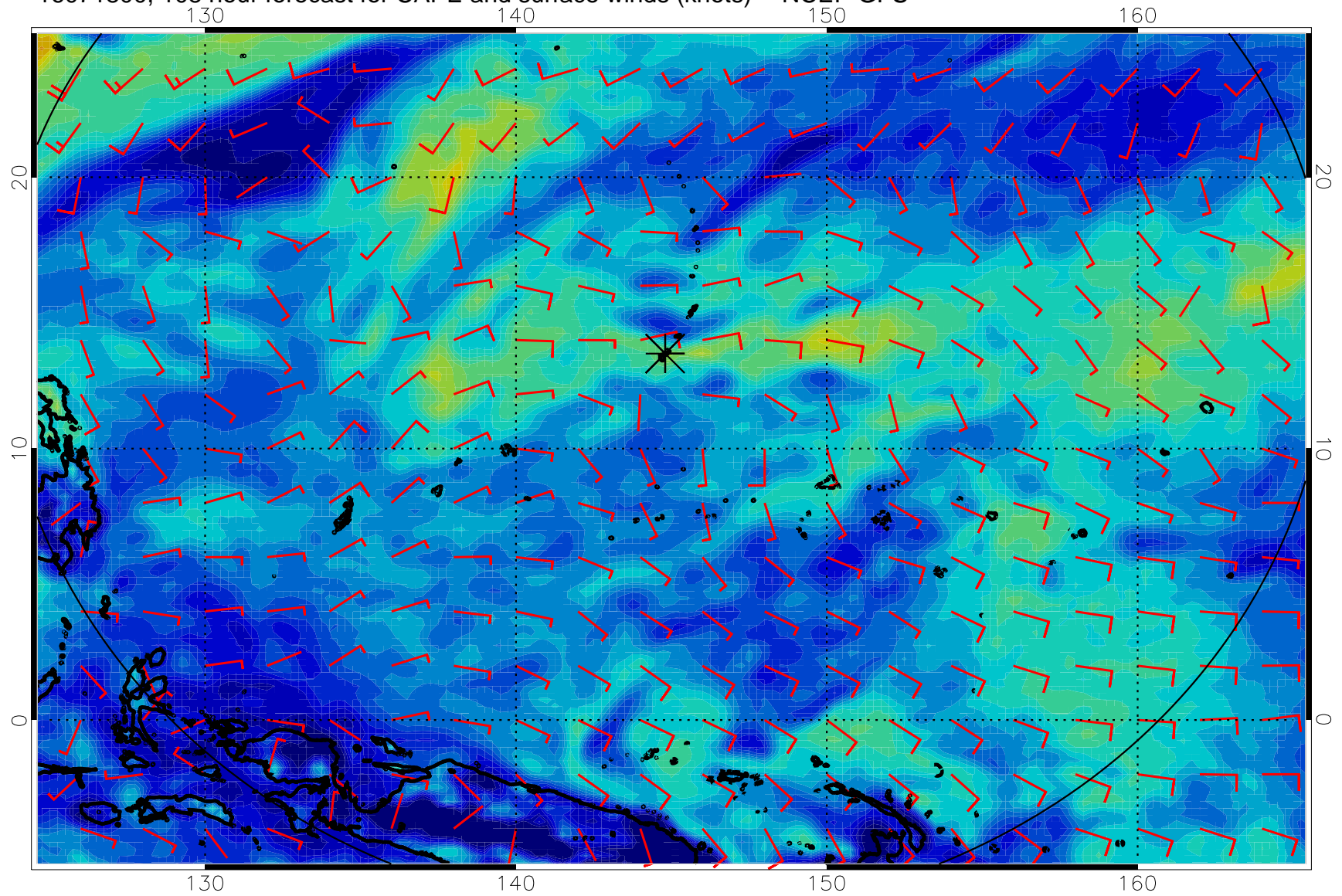




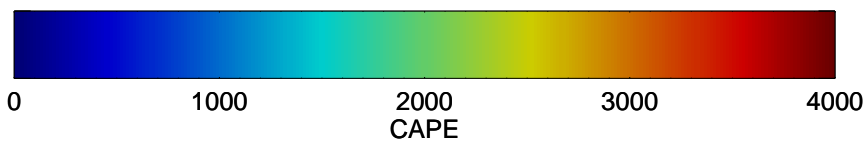
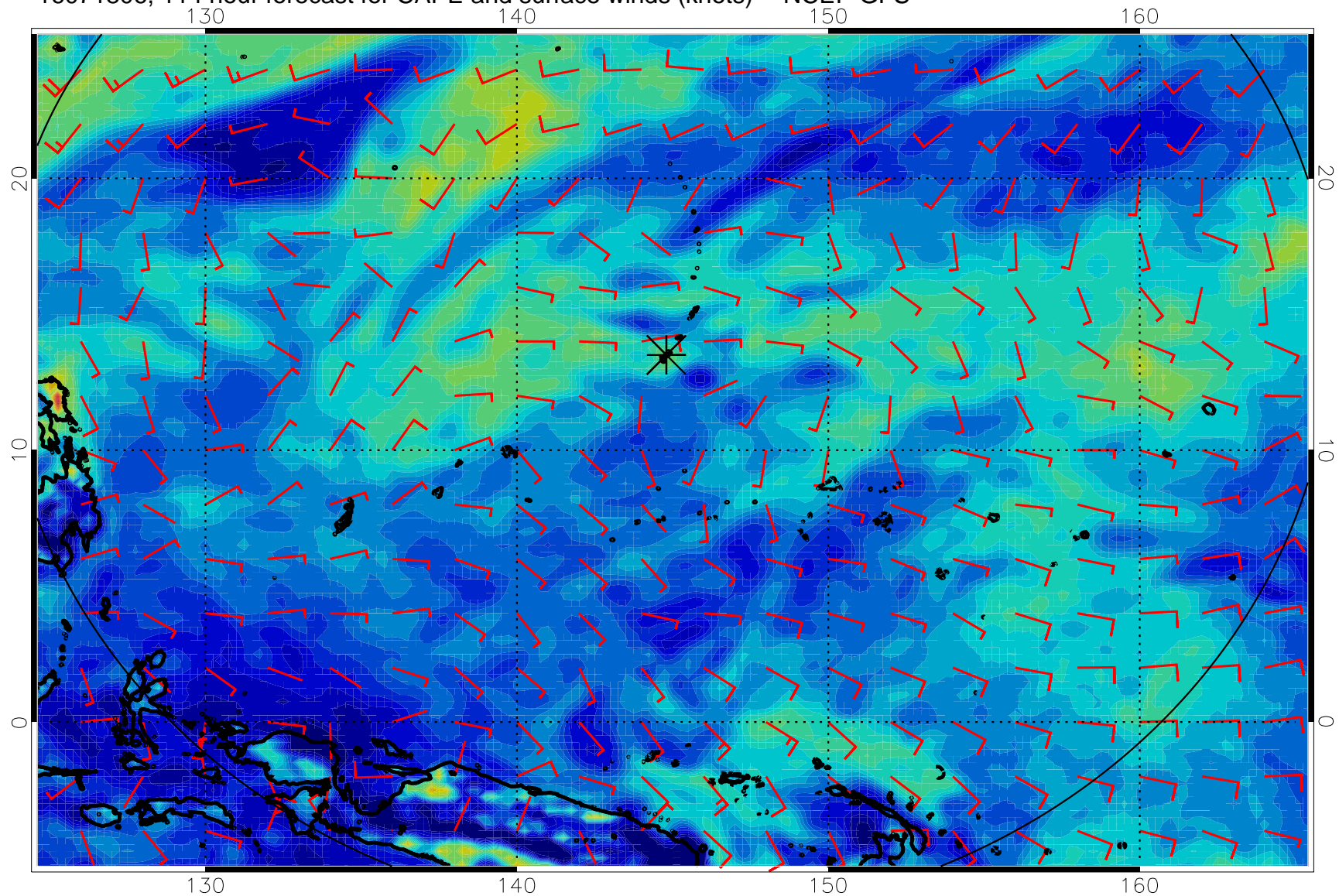
16071718, 102 hour forecast for CAPE and surface winds (knots) -- NCEP GFS



16071800, 108 hour forecast for CAPE and surface winds (knots) -- NCEP GFS



16071806, 114 hour forecast for CAPE and surface winds (knots) -- NCEP GFS



16071812, 120 hour forecast for CAPE and surface winds (knots) -- NCEP GFS

