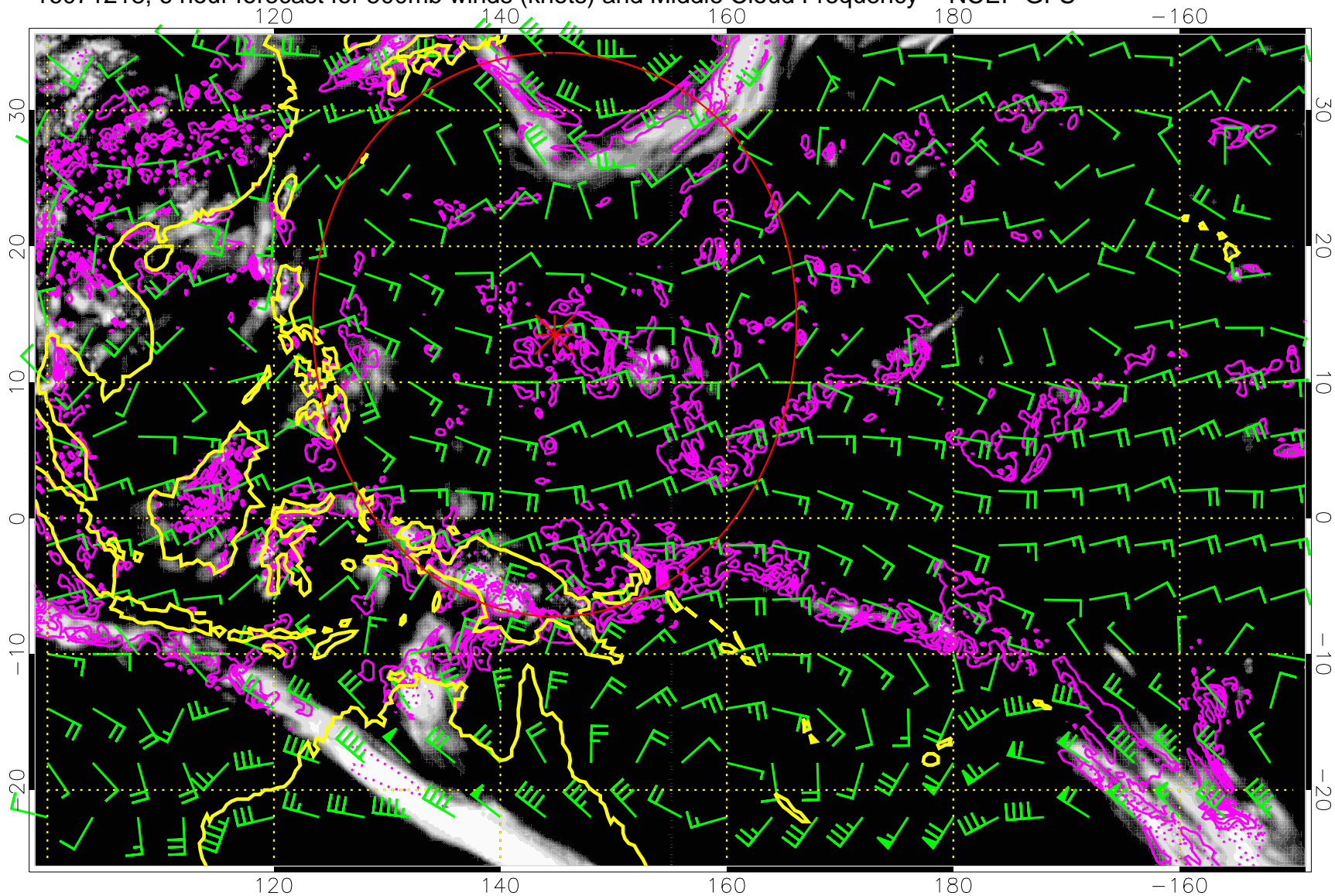


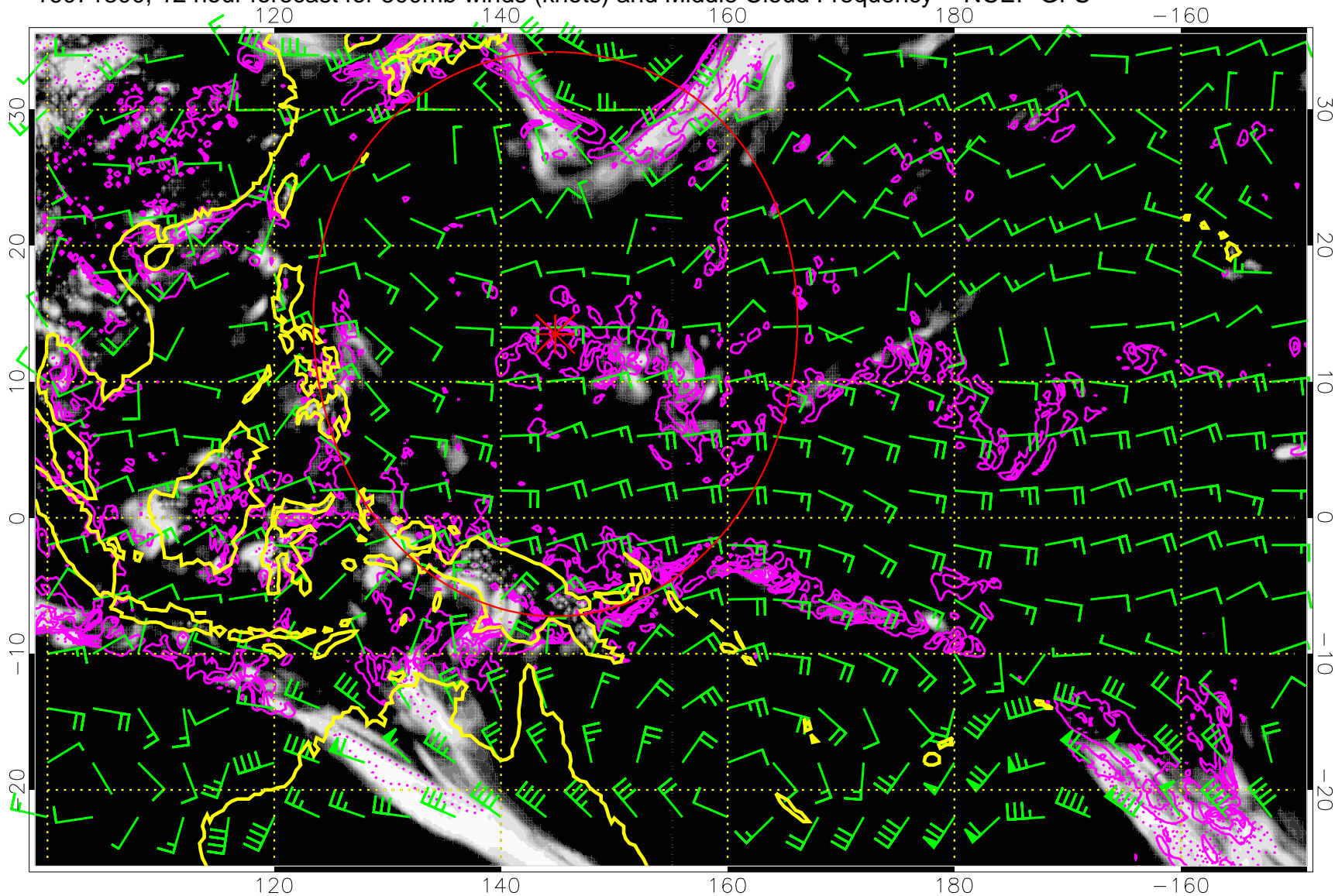
16071218, 6 hour forecast for 500mb winds (knots) and Middle Cloud Frequency -- NCEP GFS



Precip (tot dot, conv sol) mm/day 40 mm/day contours, min 20

Range ring of 2304 km

16071300, 12 hour forecast for 500mb winds (knots) and Middle Cloud Frequency -- NCEP GFS

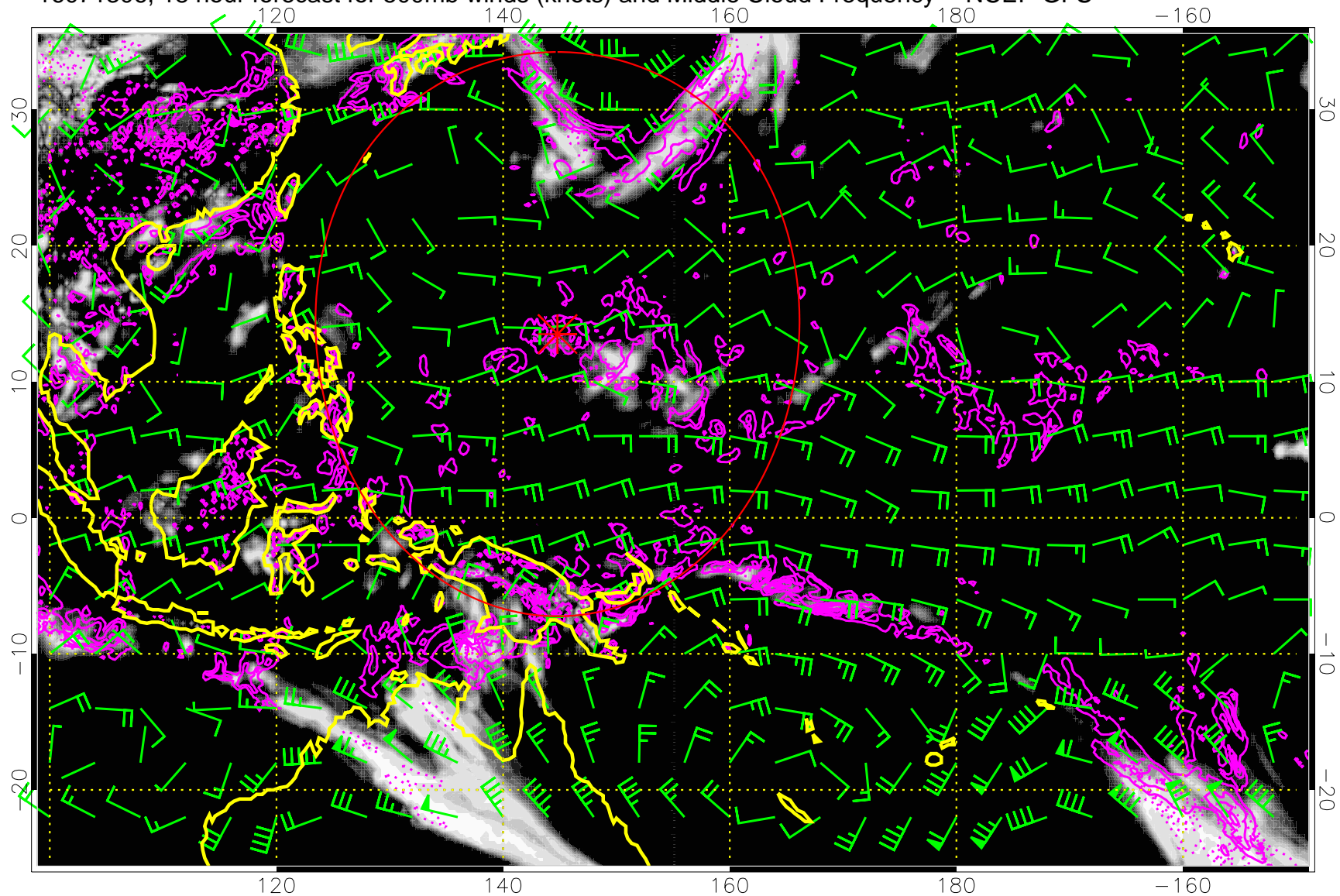


0.0 0.2 0.4 0.6 0.8 1.0
Middle Cloud Frequency

Precip (tot dot, conv sol) mm/day 40 mm/day contours, min 20

Range ring of 2304 km

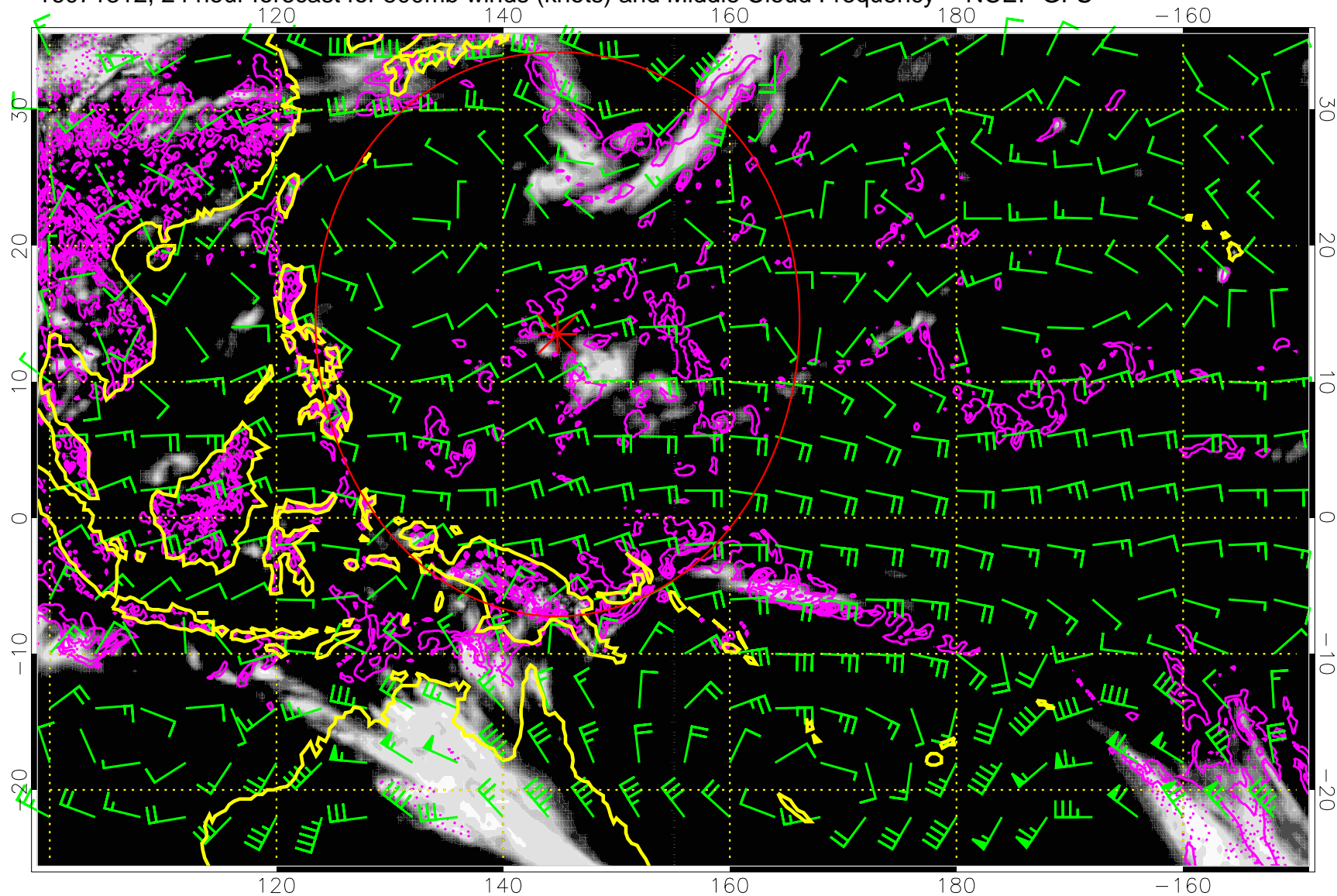
16071306, 18 hour forecast for 500mb winds (knots) and Middle Cloud Frequency -- NCEP GFS



Precip (tot dot, conv sol) mm/day 40 mm/day contours, min 20

Range ring of 2304 km

16071312, 24 hour forecast for 500mb winds (knots) and Middle Cloud Frequency -- NCEP GFS

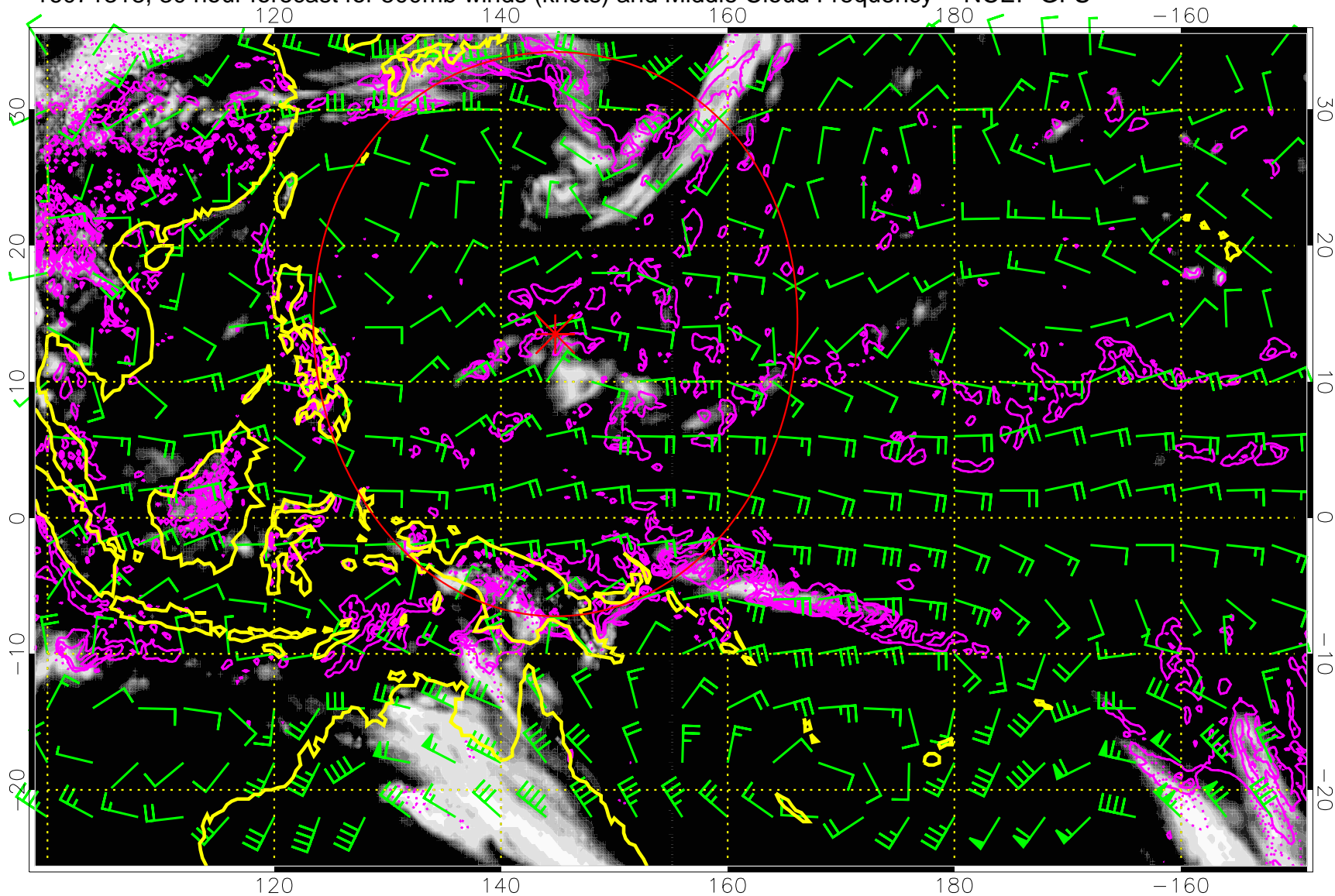


0.0 0.2 0.4 0.6 0.8 1.0
Middle Cloud Frequency

Precip (tot dot, conv sol) mm/day 40 mm/day contours, min 20

Range ring of 2304 km

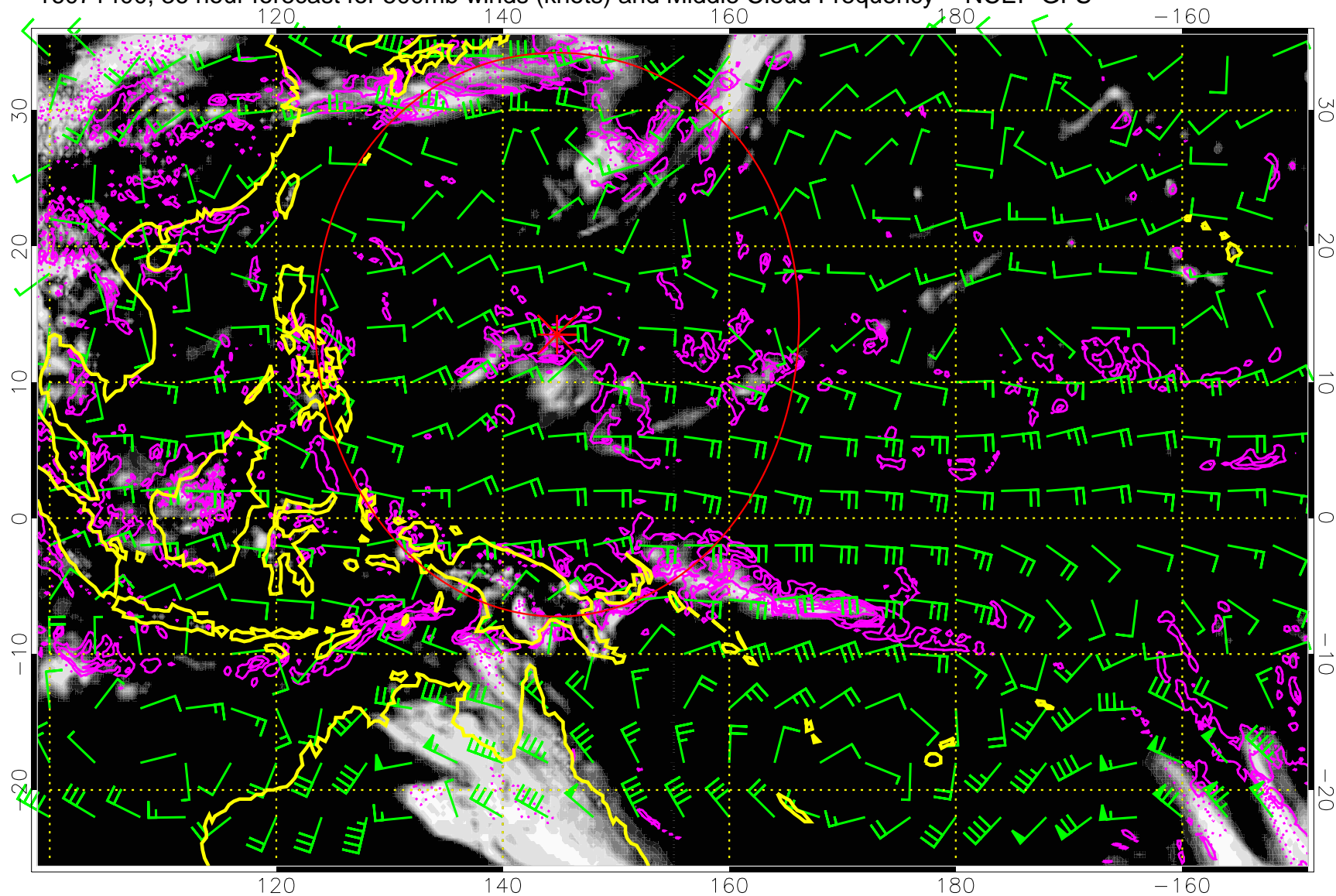
16071318, 30 hour forecast for 500mb winds (knots) and Middle Cloud Frequency -- NCEP GFS



Precip (tot dot, conv sol) mm/day 40 mm/day contours, min 20

Range ring of 2304 km

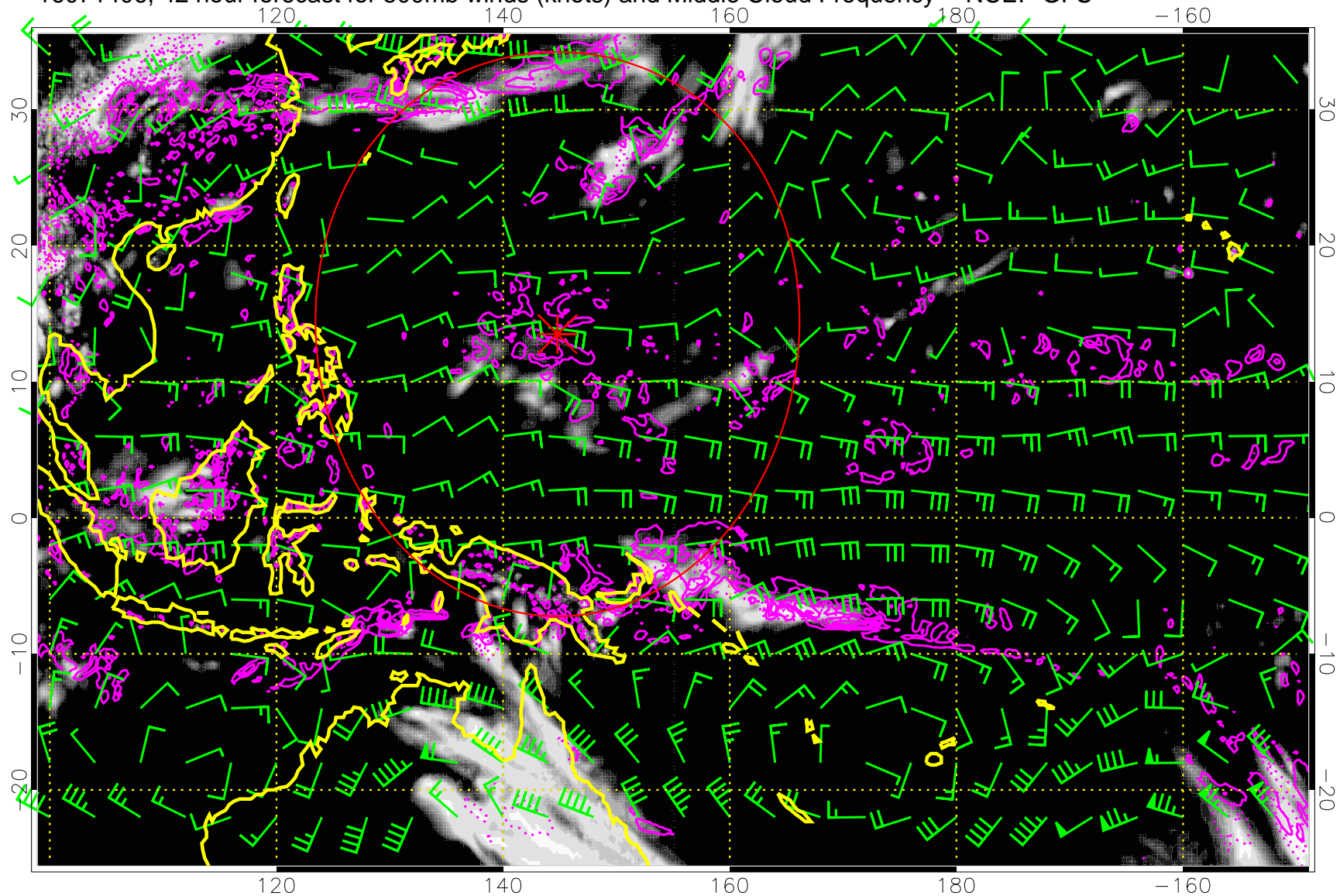
16071400, 36 hour forecast for 500mb winds (knots) and Middle Cloud Frequency -- NCEP GFS



Precip (tot dot, conv sol) mm/day 40 mm/day contours, min 20

Range ring of 2304 km

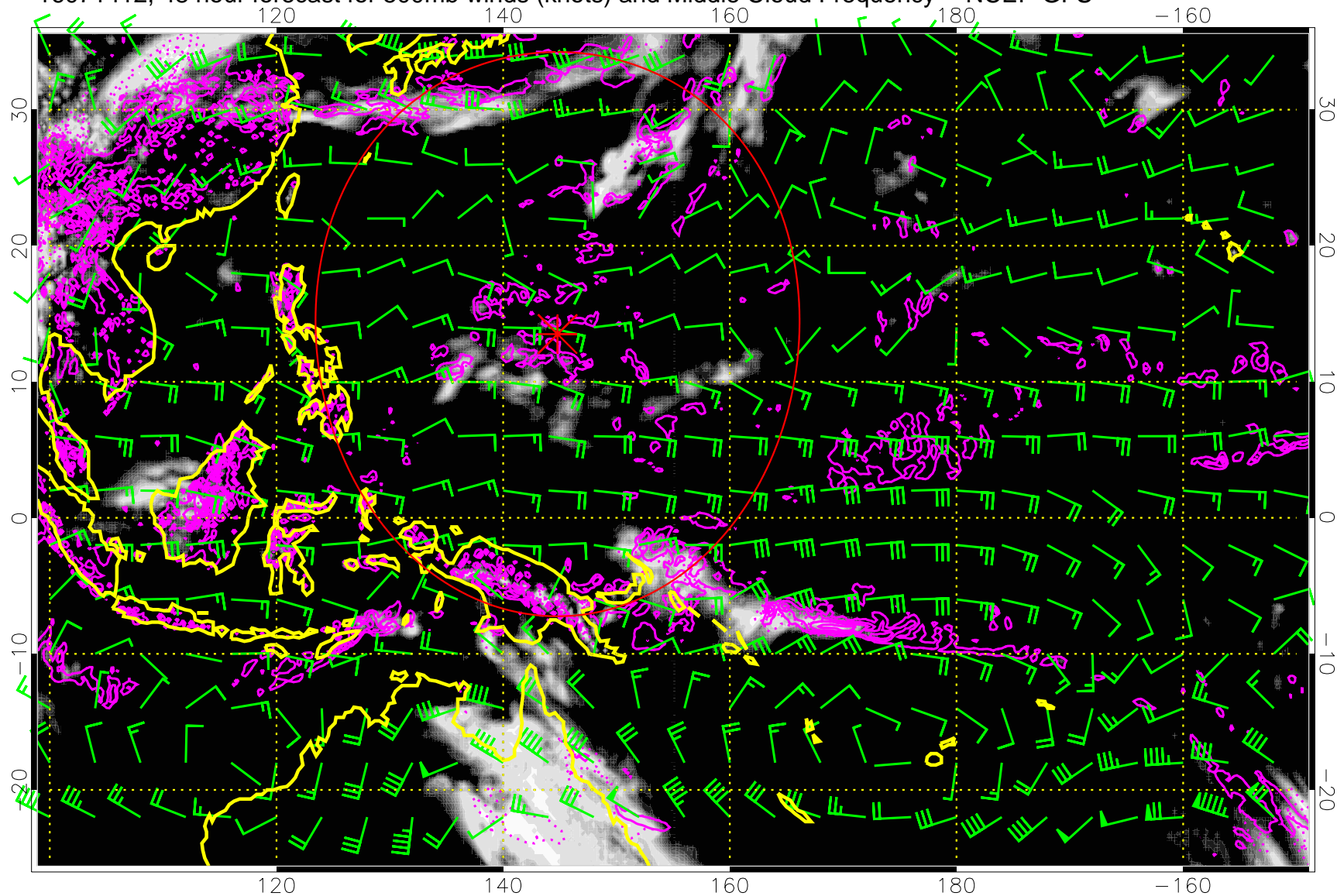
16071406, 42 hour forecast for 500mb winds (knots) and Middle Cloud Frequency -- NCEP GFS



Precip (tot dot, conv sol) mm/day 40 mm/day contours, min 20

Range ring of 2304 km

16071412, 48 hour forecast for 500mb winds (knots) and Middle Cloud Frequency -- NCEP GFS

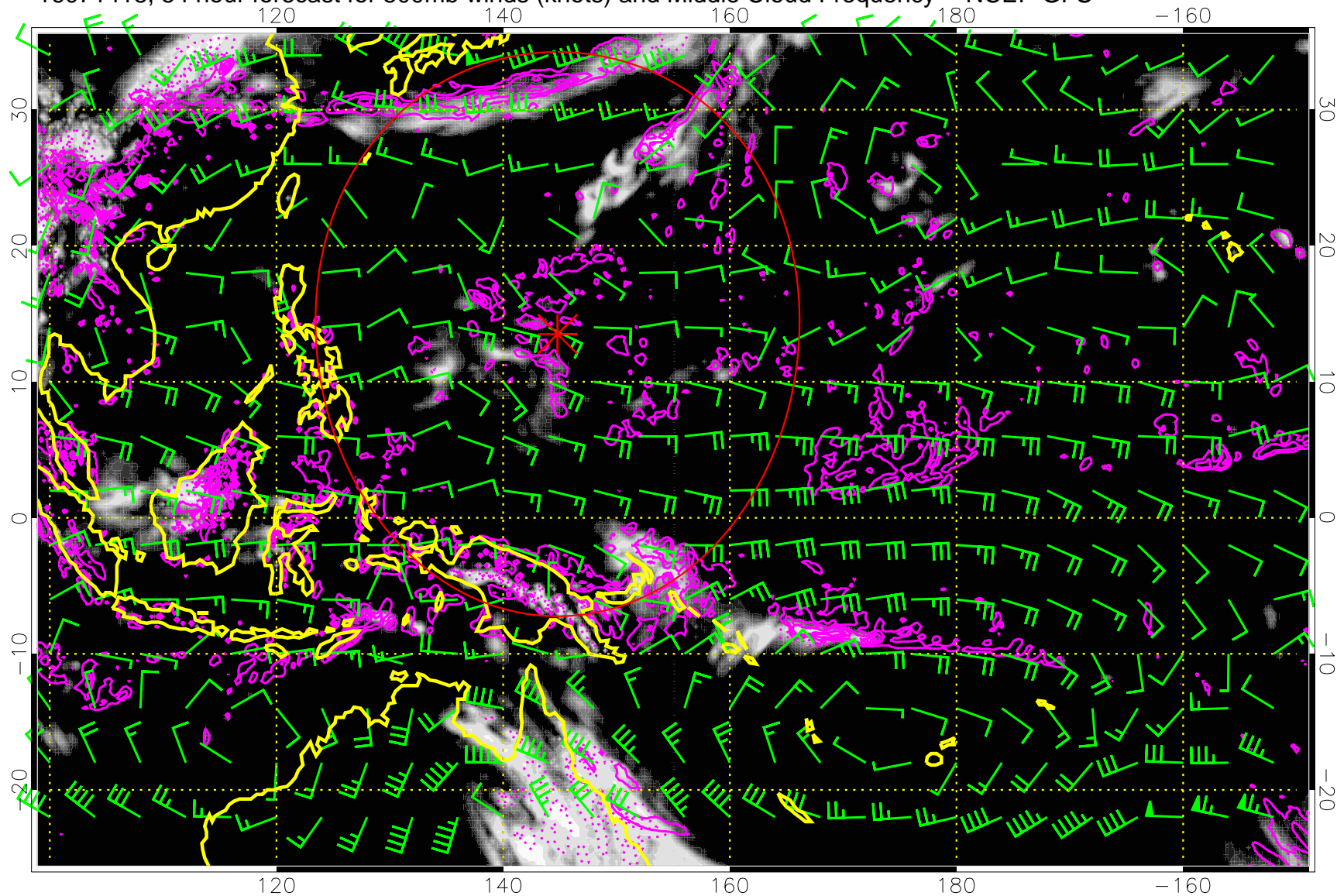


0.0 0.2 0.4 0.6 0.8 1.0
Middle Cloud Frequency

Precip (tot dot, conv sol) mm/day 40 mm/day contours, min 20

Range ring of 2304 km

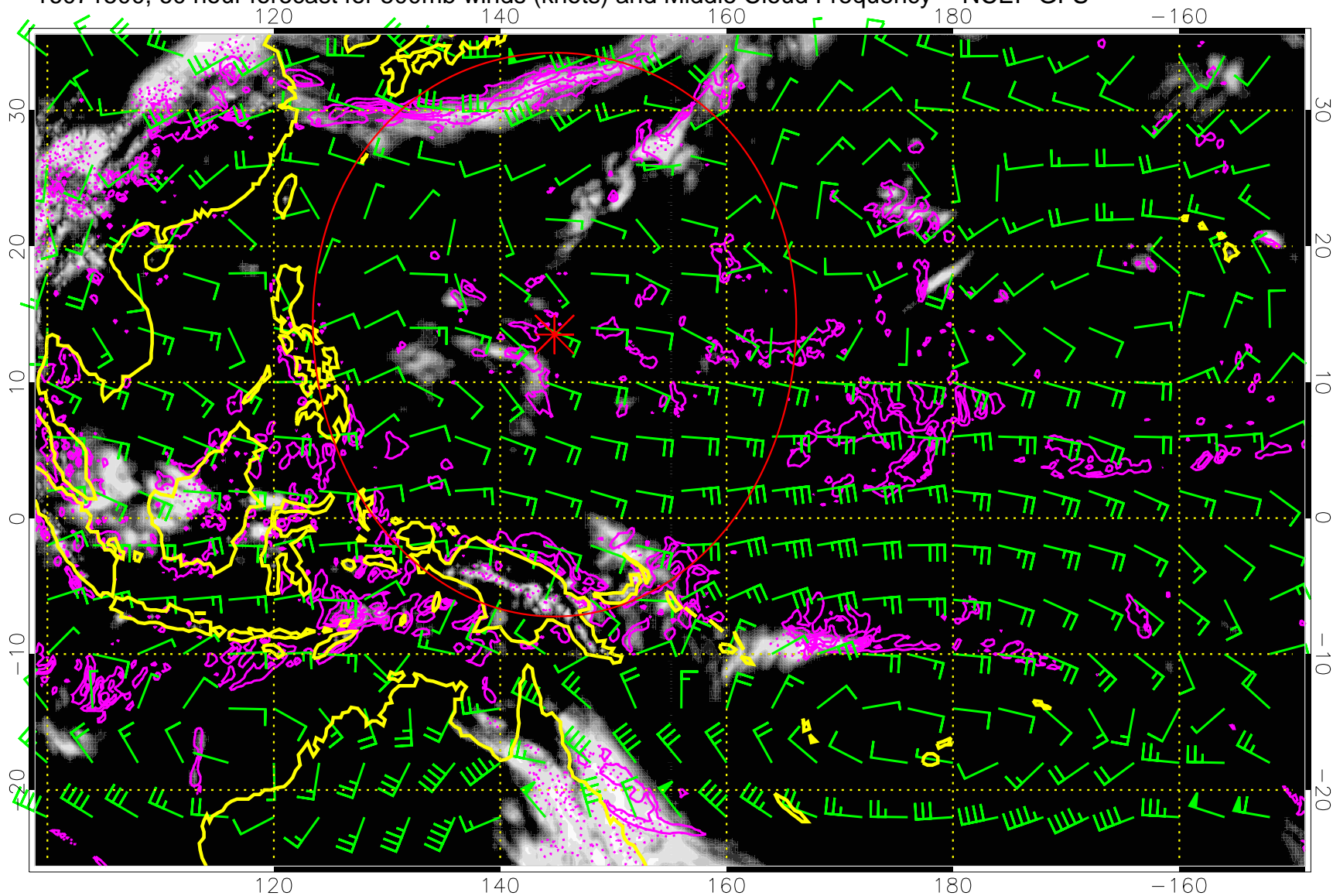
16071418, 54 hour forecast for 500mb winds (knots) and Middle Cloud Frequency -- NCEP GFS



Precip (tot dot, conv sol) mm/day 40 mm/day contours, min 20

Range ring of 2304 km

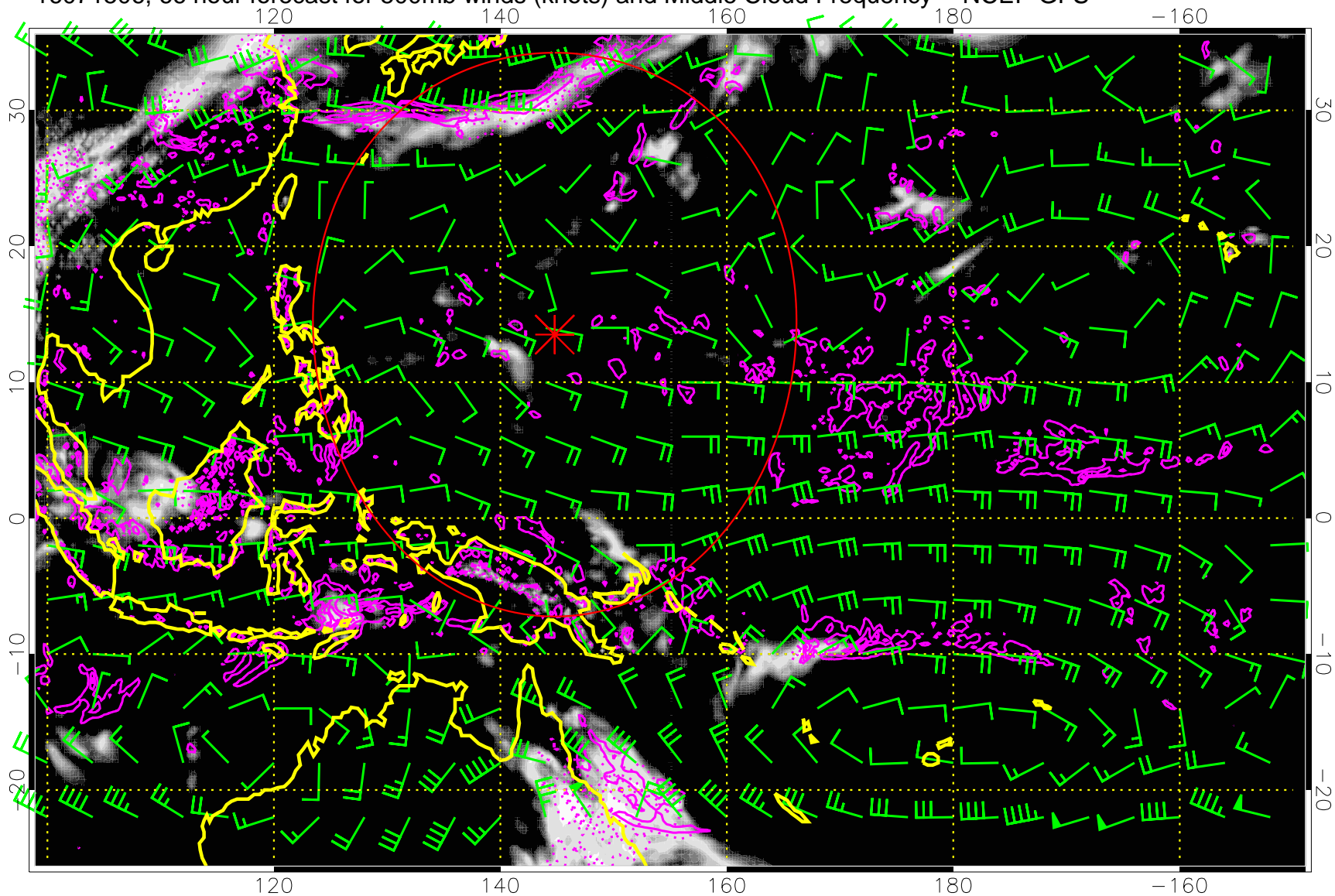
16071500, 60 hour forecast for 500mb winds (knots) and Middle Cloud Frequency -- NCEP GFS



Precip (tot dot, conv sol) mm/day 40 mm/day contours, min 20

Range ring of 2304 km

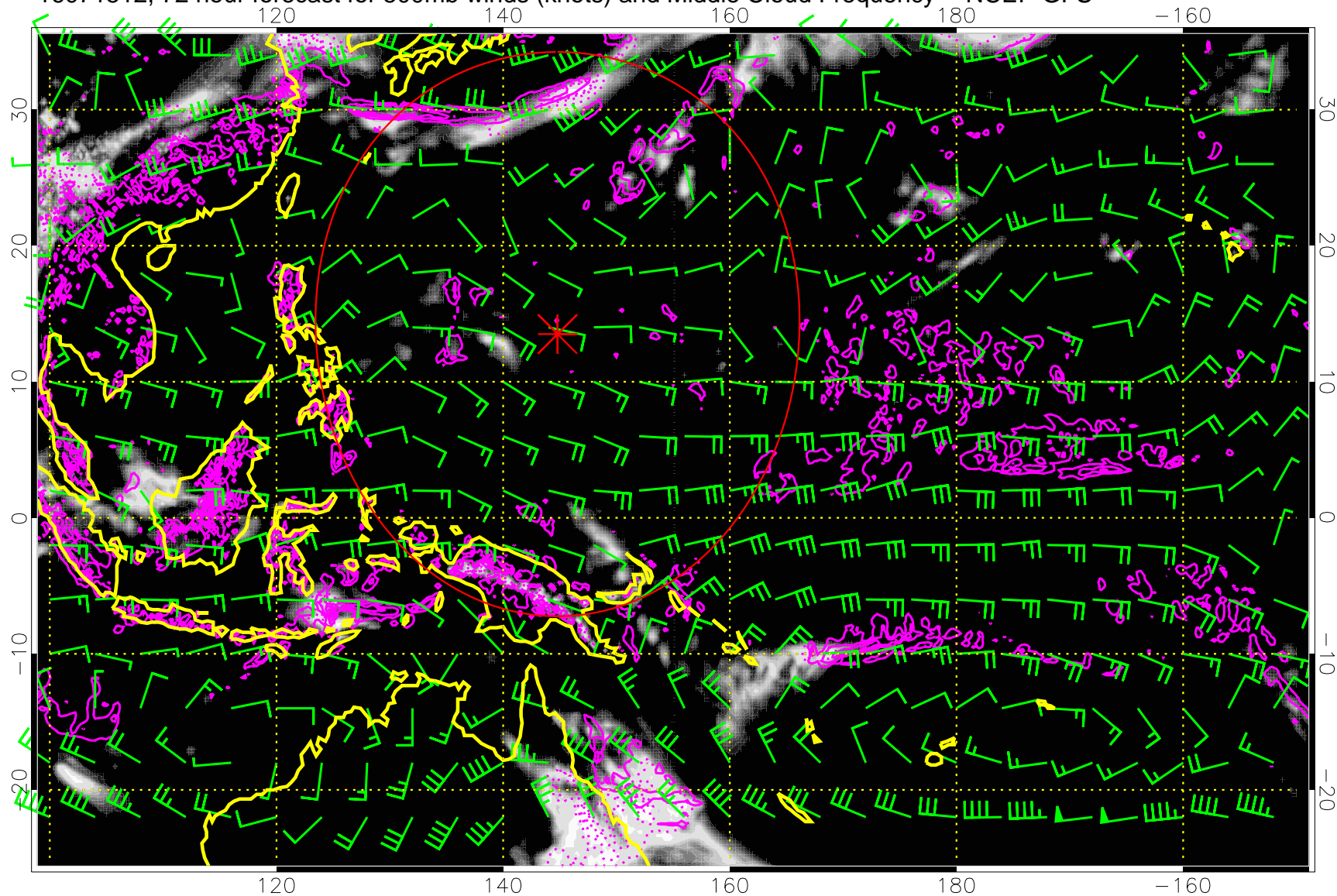
16071506, 66 hour forecast for 500mb winds (knots) and Middle Cloud Frequency -- NCEP GFS



Precip (tot dot, conv sol) mm/day 40 mm/day contours, min 20

Range ring of 2304 km

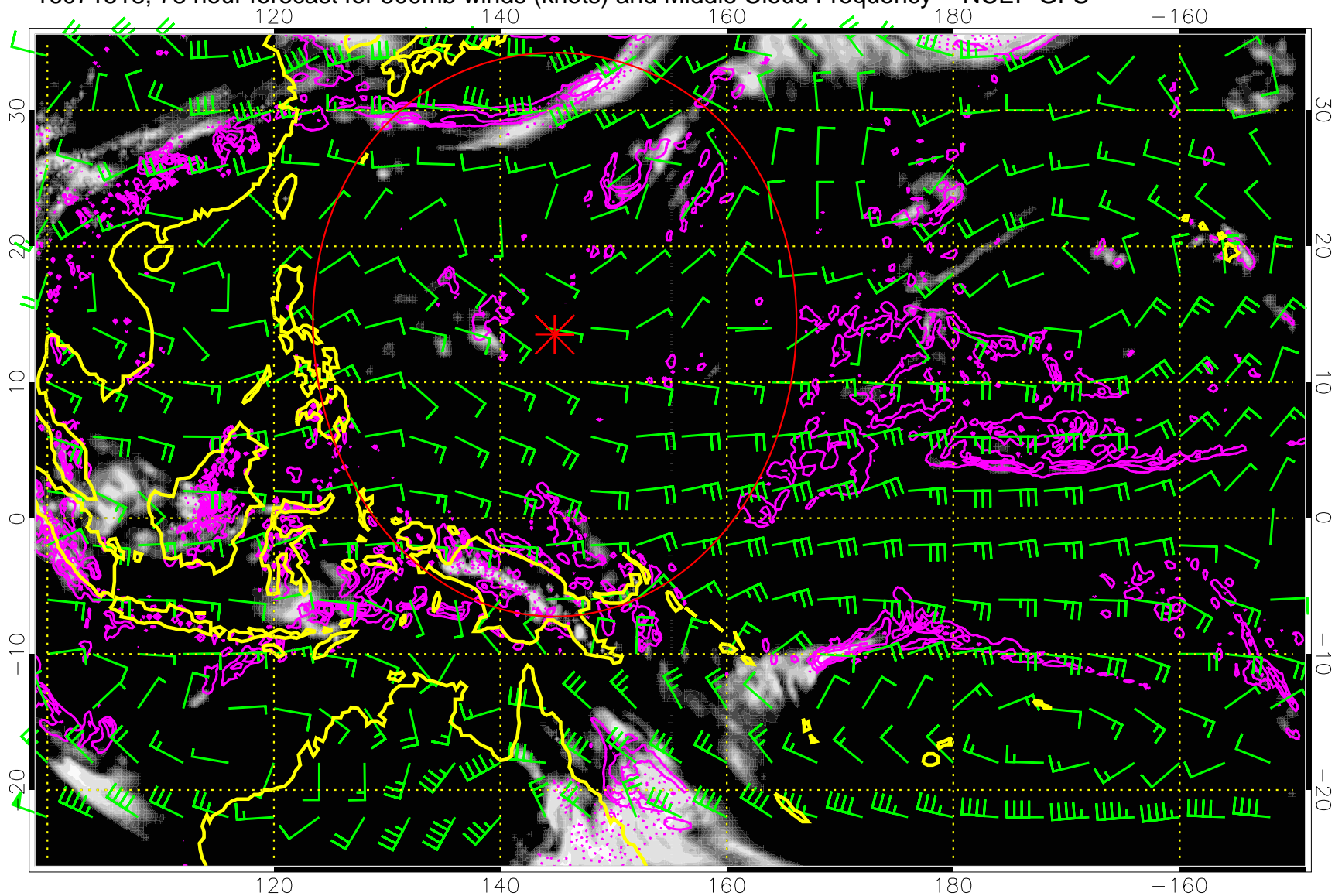
16071512, 72 hour forecast for 500mb winds (knots) and Middle Cloud Frequency -- NCEP GFS



Precip (tot dot, conv sol) mm/day 40 mm/day contours, min 20

Range ring of 2304 km

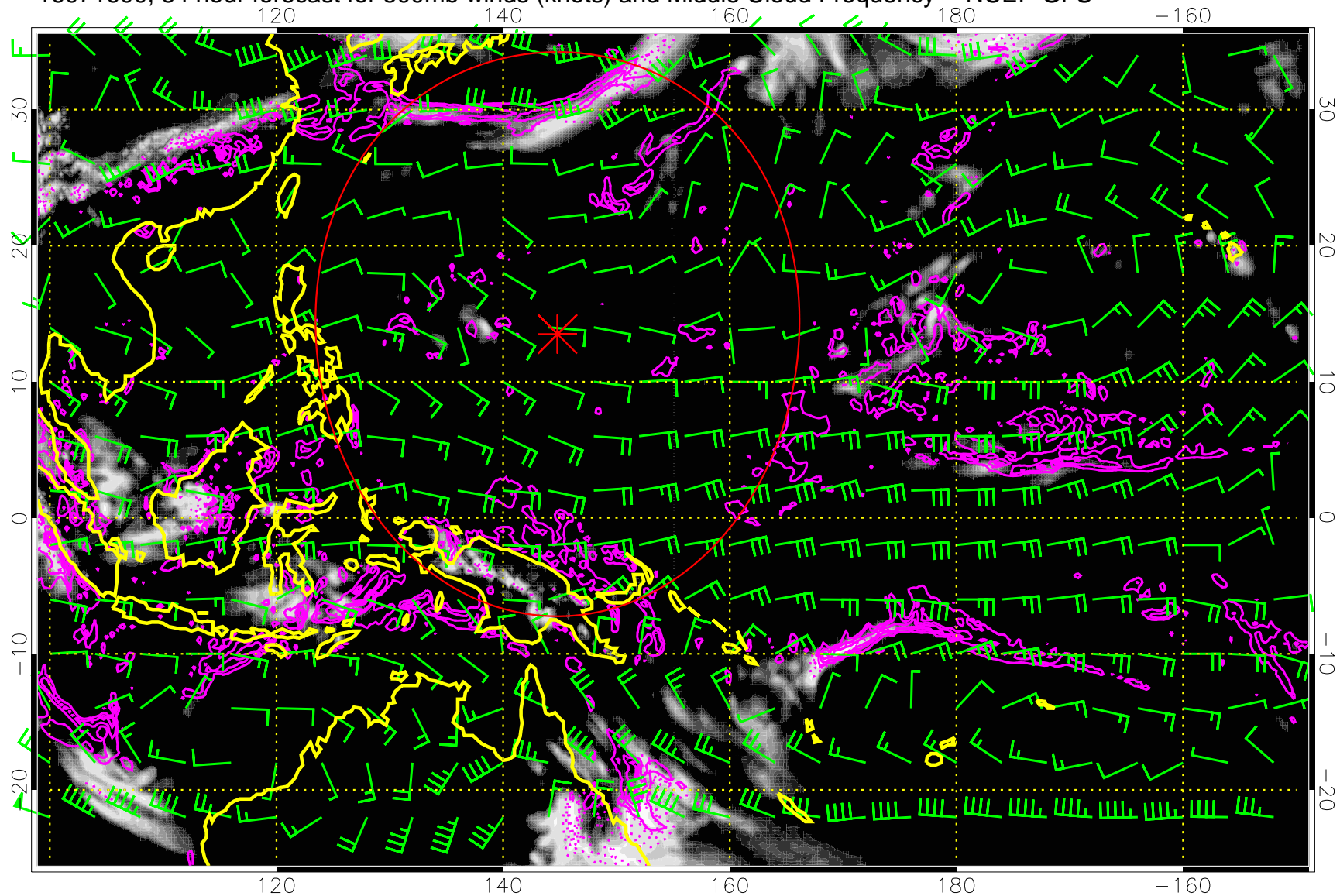
16071518, 78 hour forecast for 500mb winds (knots) and Middle Cloud Frequency -- NCEP GFS



Precip (tot dot, conv sol) mm/day 40 mm/day contours, min 20

Range ring of 2304 km

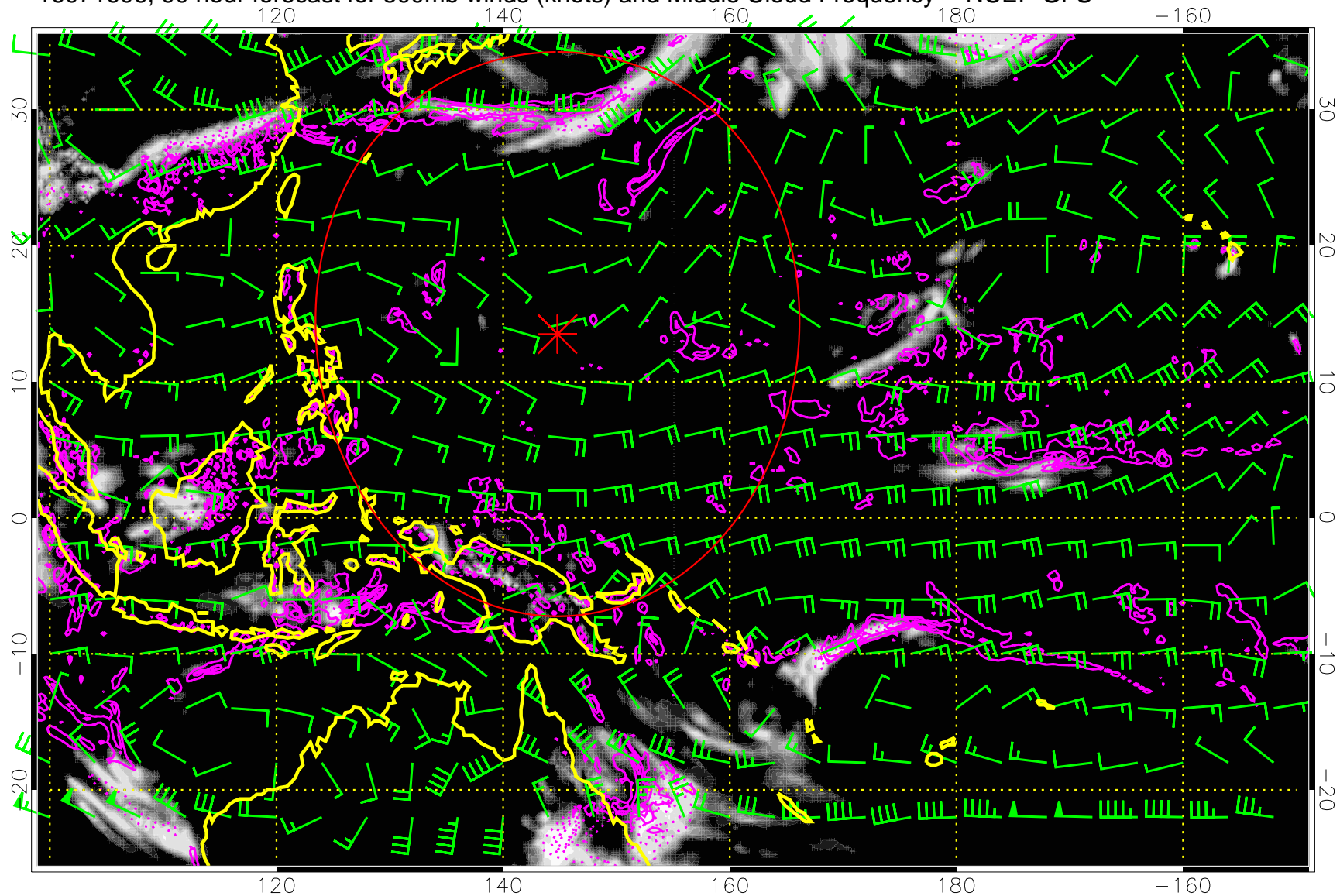
16071600, 84 hour forecast for 500mb winds (knots) and Middle Cloud Frequency -- NCEP GFS



Precip (tot dot, conv sol) mm/day 40 mm/day contours, min 20

Range ring of 2304 km

16071606, 90 hour forecast for 500mb winds (knots) and Middle Cloud Frequency -- NCEP GFS

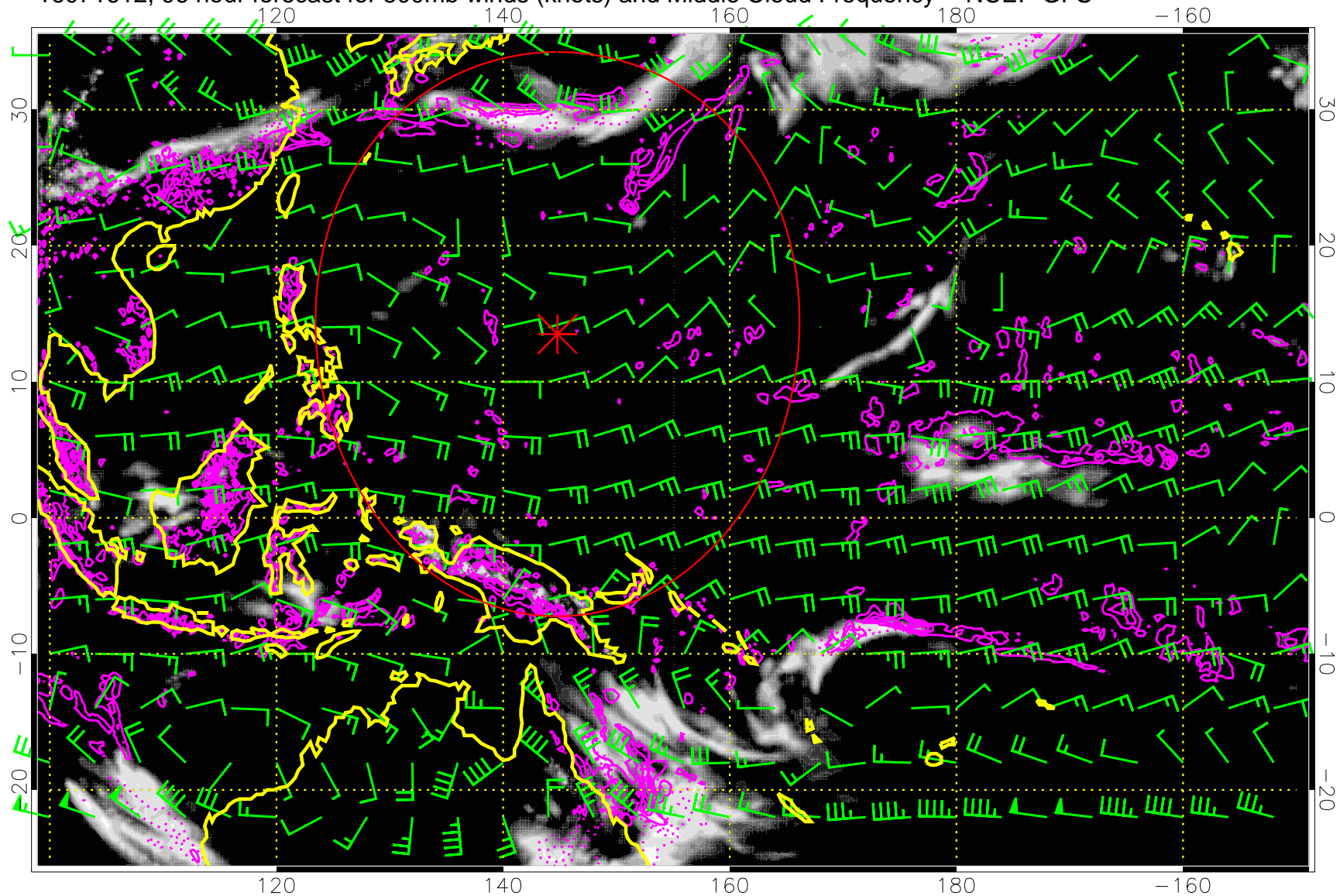


0.0 0.2 0.4 0.6 0.8 1.0
Middle Cloud Frequency

Precip (tot dot, conv sol) mm/day 40 mm/day contours, min 20

Range ring of 2304 km

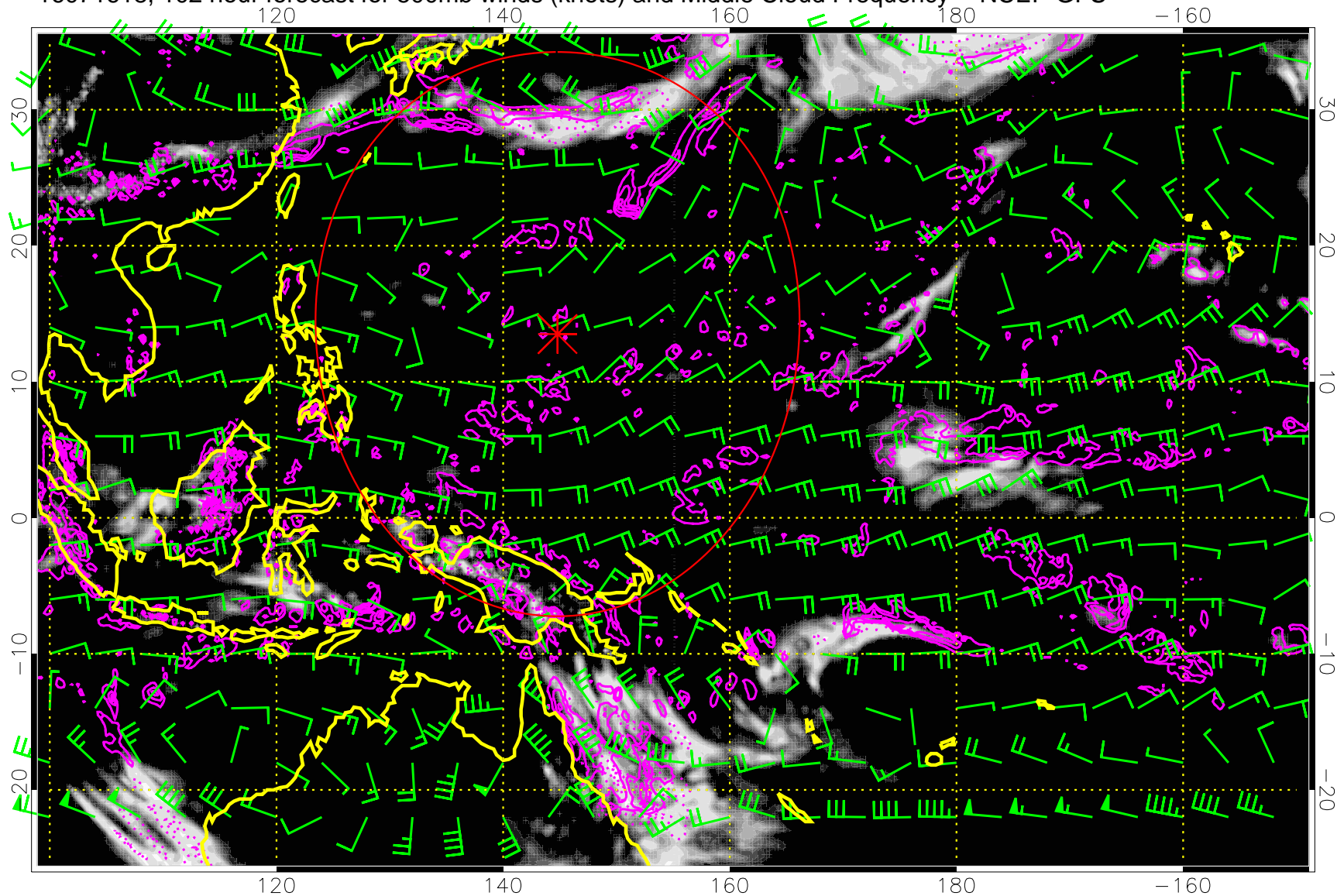
16071612, 96 hour forecast for 500mb winds (knots) and Middle Cloud Frequency -- NCEP GFS



Precip (tot dot, conv sol) mm/day 40 mm/day contours, min 20

Range ring of 2304 km

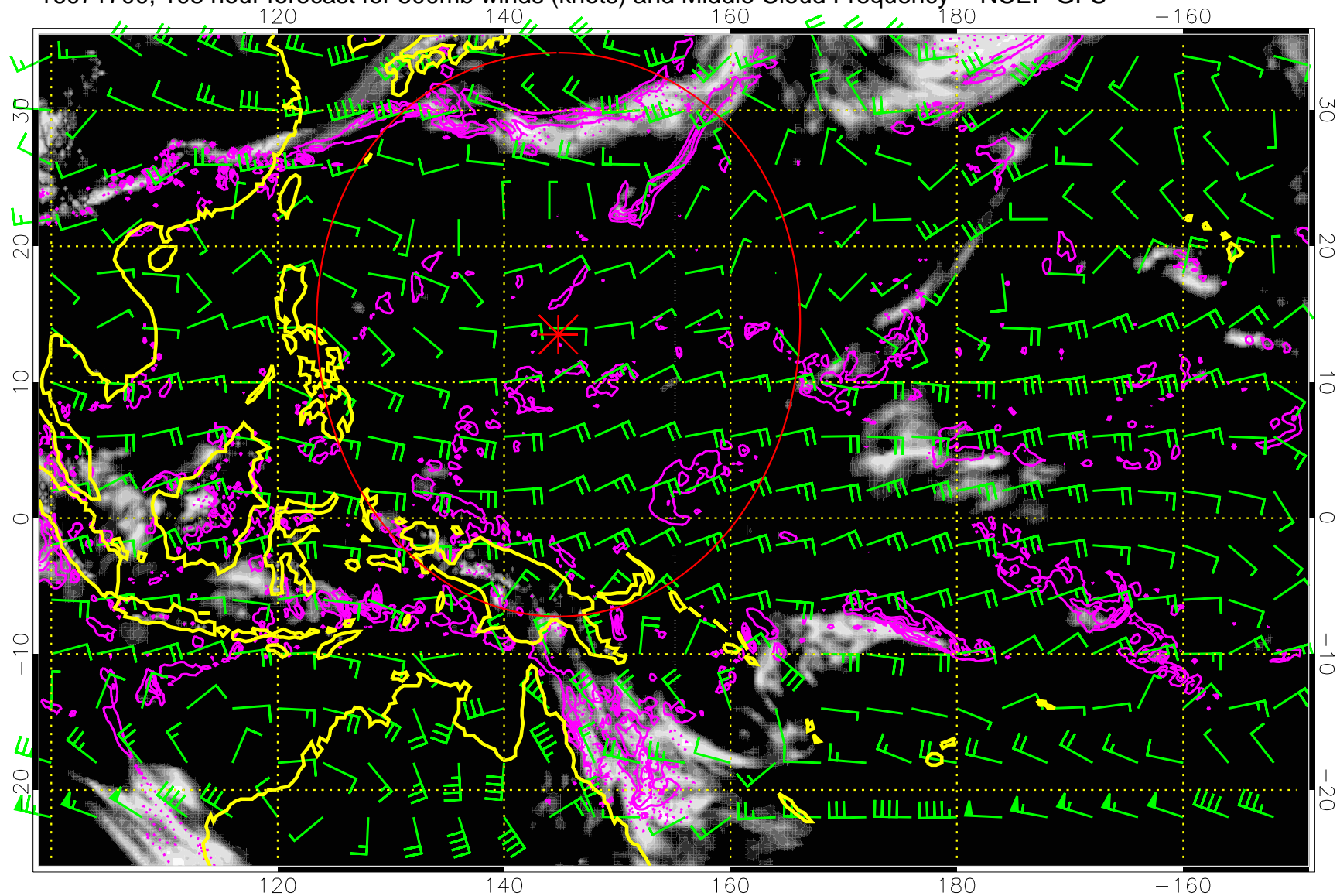
16071618, 102 hour forecast for 500mb winds (knots) and Middle Cloud Frequency -- NCEP GFS



Precip (tot dot, conv sol) mm/day 40 mm/day contours, min 20

Range ring of 2304 km

16071700, 108 hour forecast for 500mb winds (knots) and Middle Cloud Frequency -- NCEP GFS

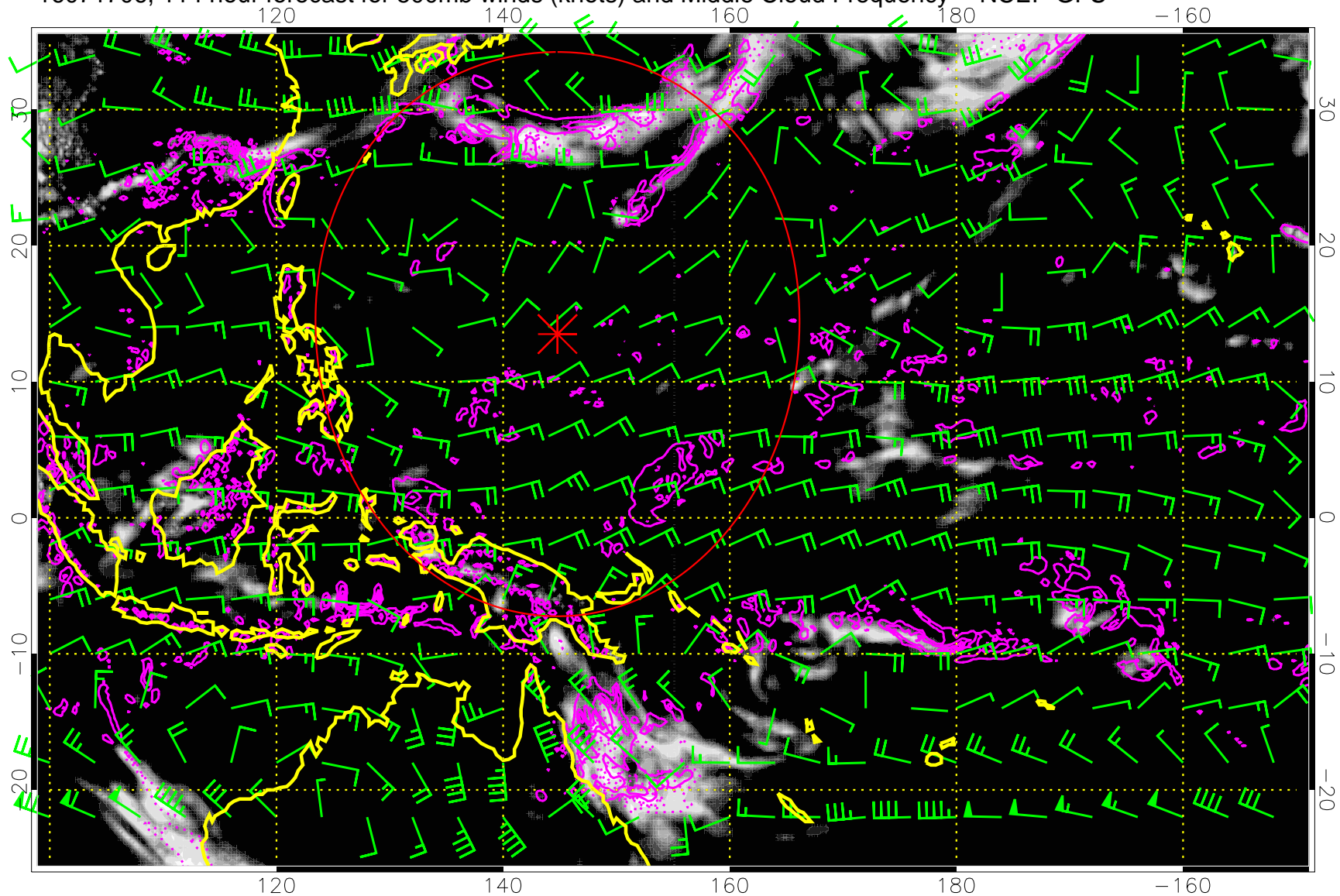


0.0 0.2 0.4 0.6 0.8 1.0
Middle Cloud Frequency

Precip (tot dot, conv sol) mm/day 40 mm/day contours, min 20

Range ring of 2304 km

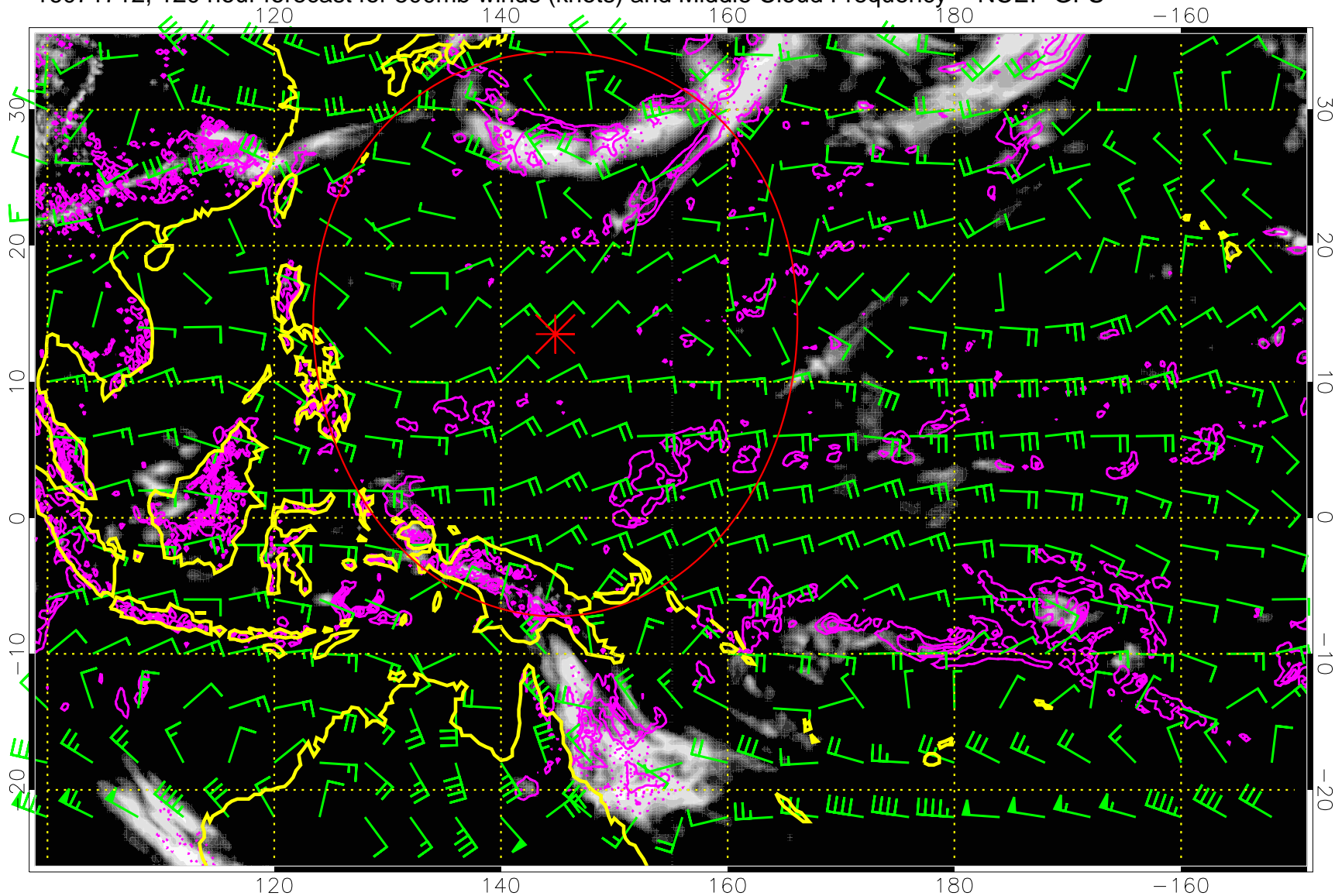
16071706, 114 hour forecast for 500mb winds (knots) and Middle Cloud Frequency -- NCEP GFS



Precip (tot dot, conv sol) mm/day 40 mm/day contours, min 20

Range ring of 2304 km

16071712, 120 hour forecast for 500mb winds (knots) and Middle Cloud Frequency -- NCEP GFS



Precip (tot dot, conv sol) mm/day 40 mm/day contours, min 20

Range ring of 2304 km