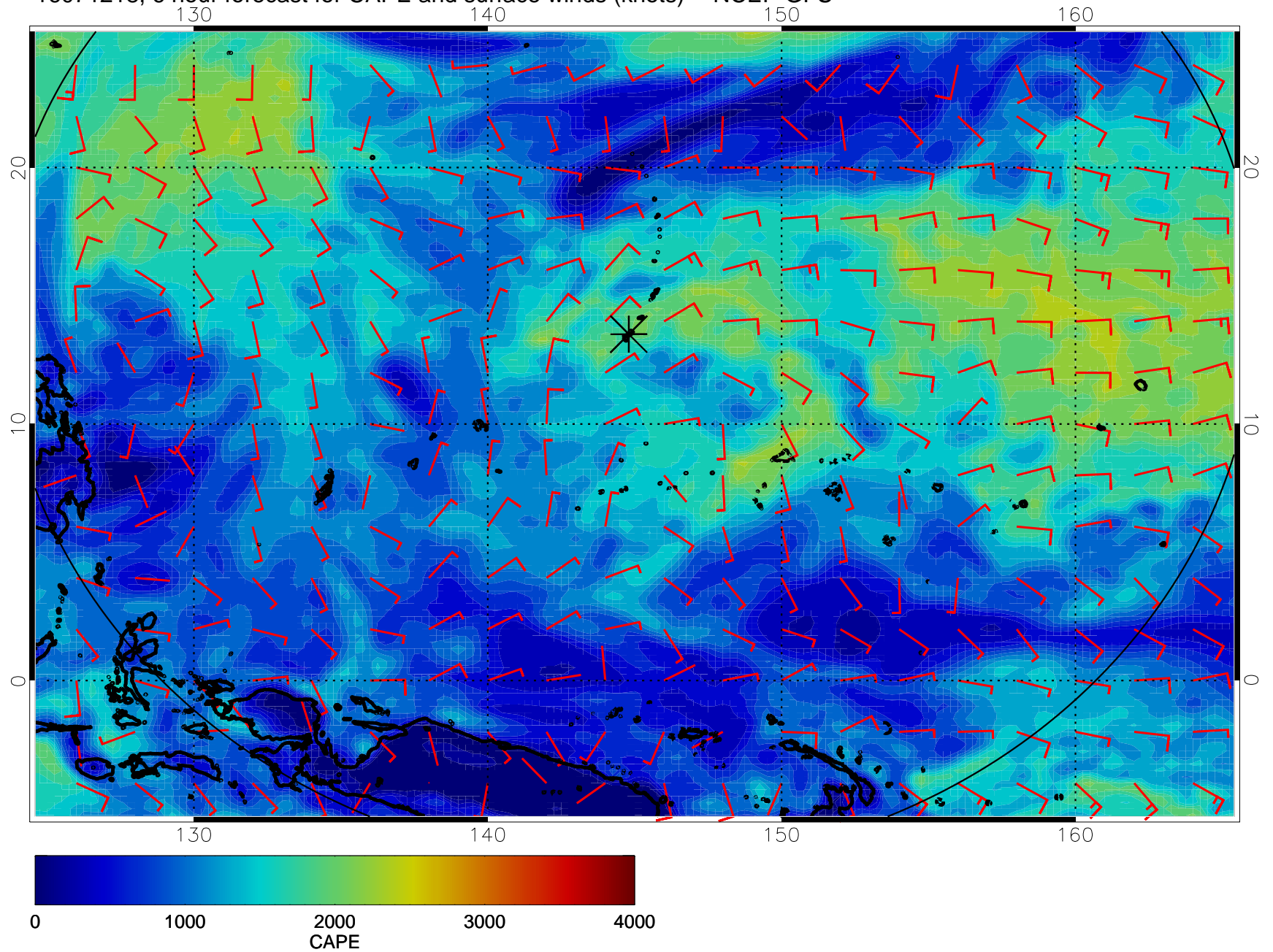
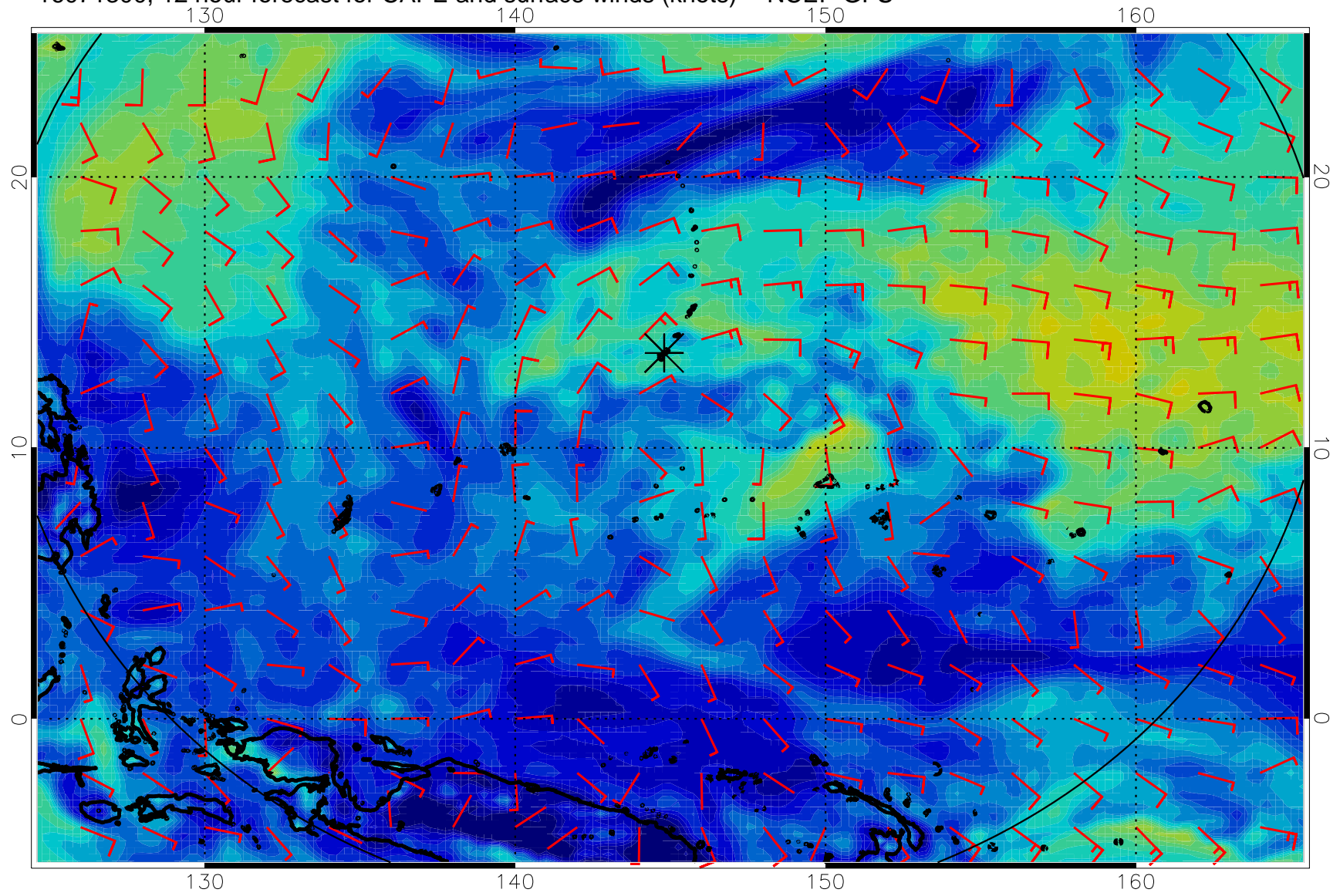


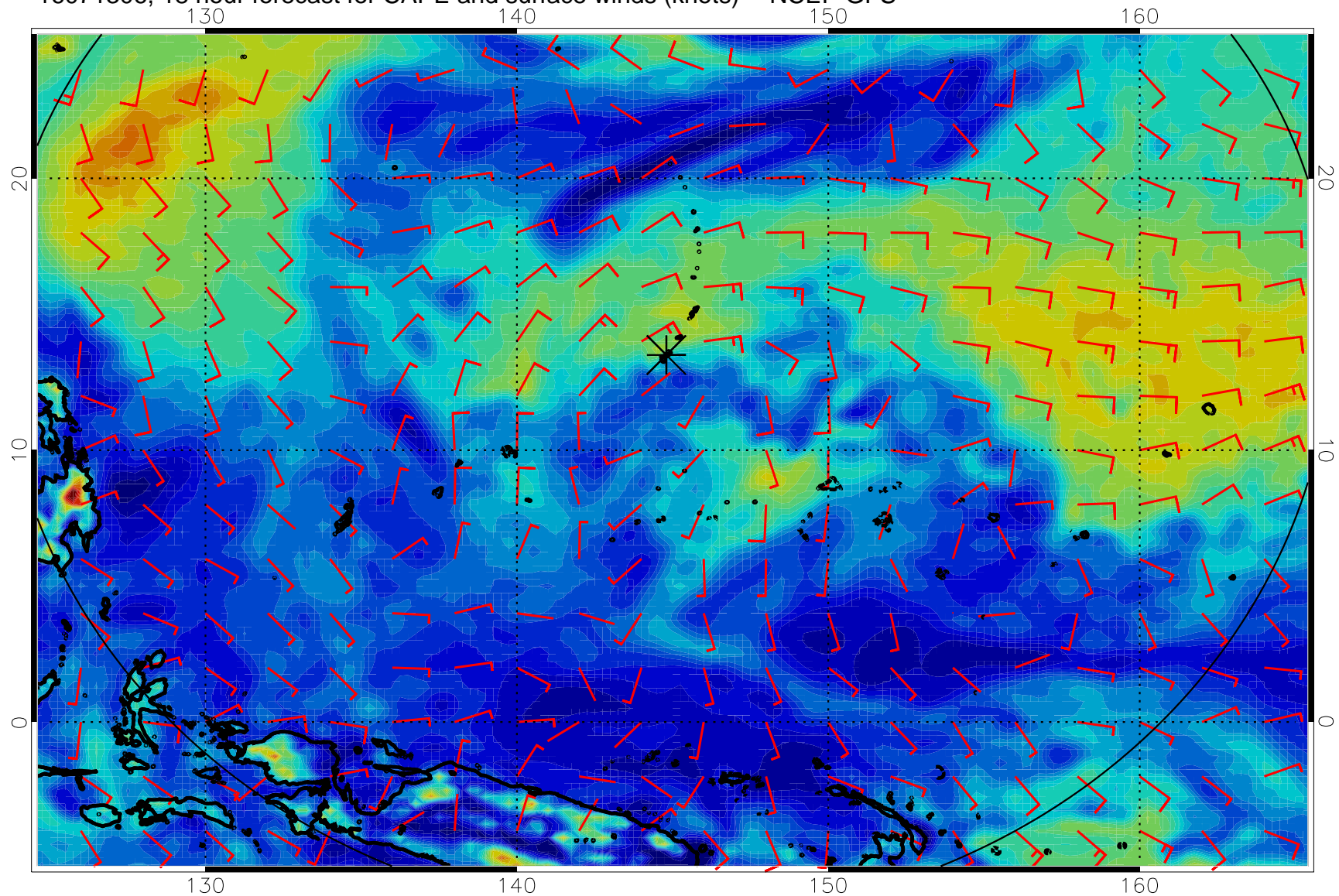
16071218, 6 hour forecast for CAPE and surface winds (knots) -- NCEP GFS



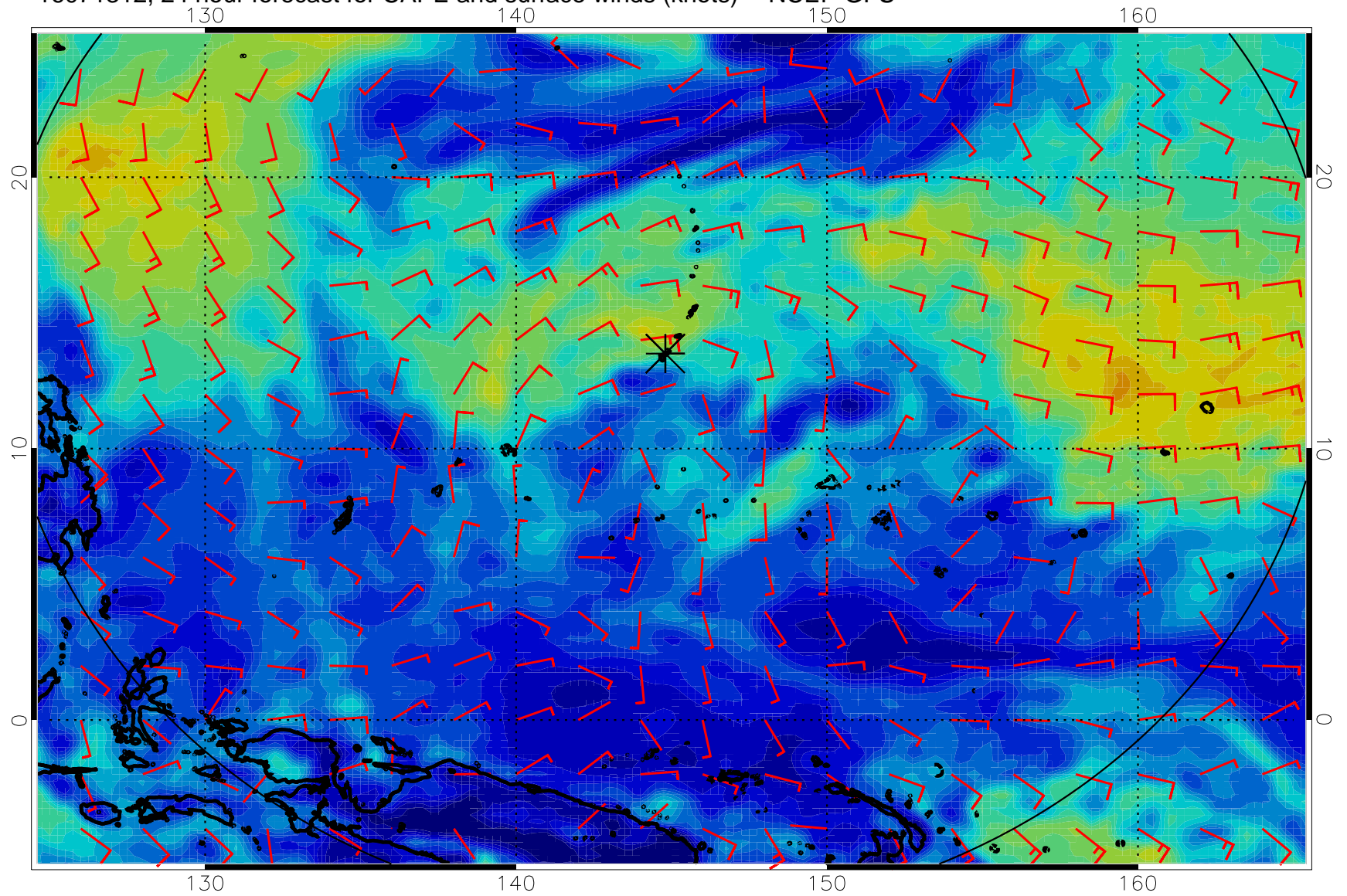
16071300, 12 hour forecast for CAPE and surface winds (knots) -- NCEP GFS



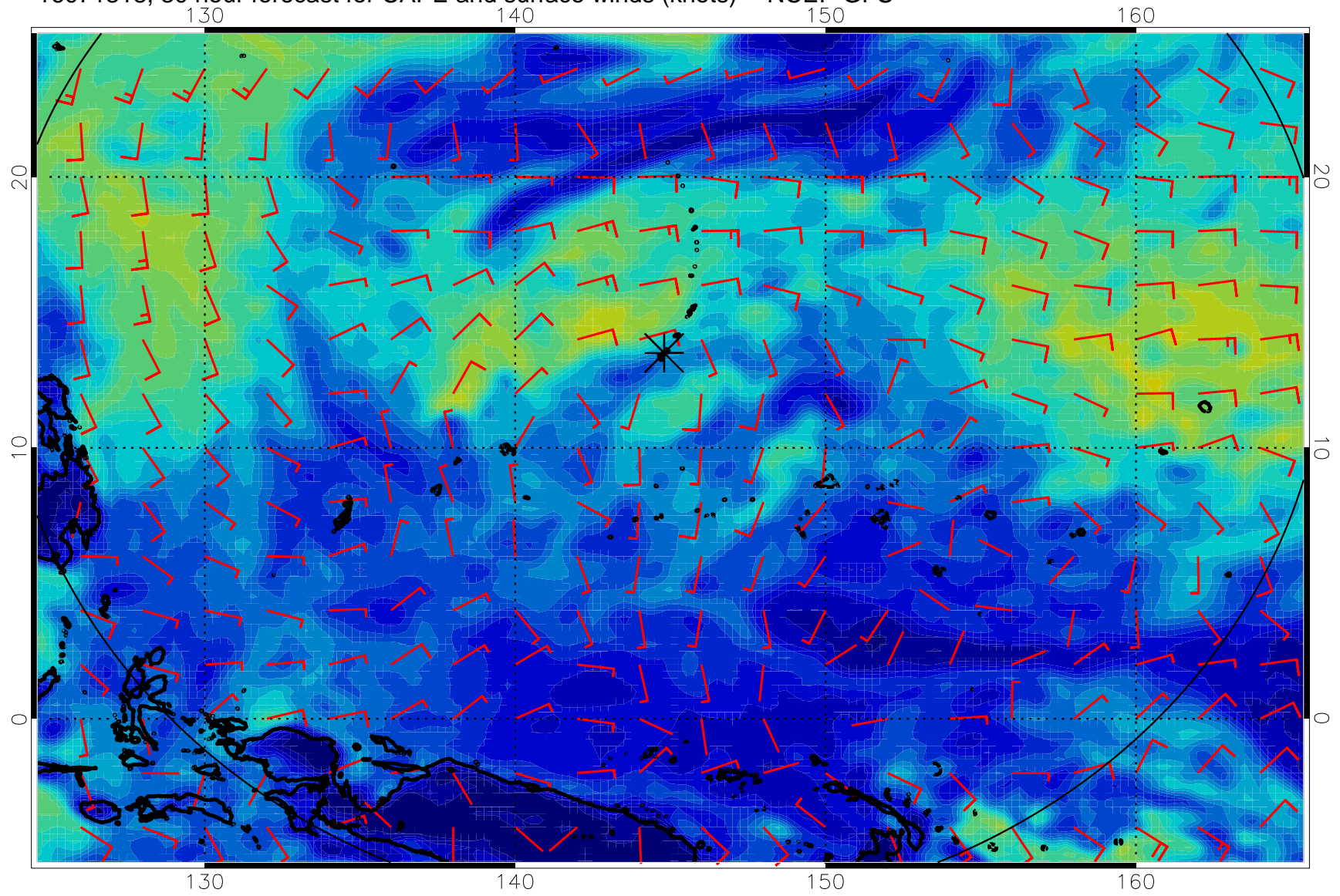
16071306, 18 hour forecast for CAPE and surface winds (knots) -- NCEP GFS



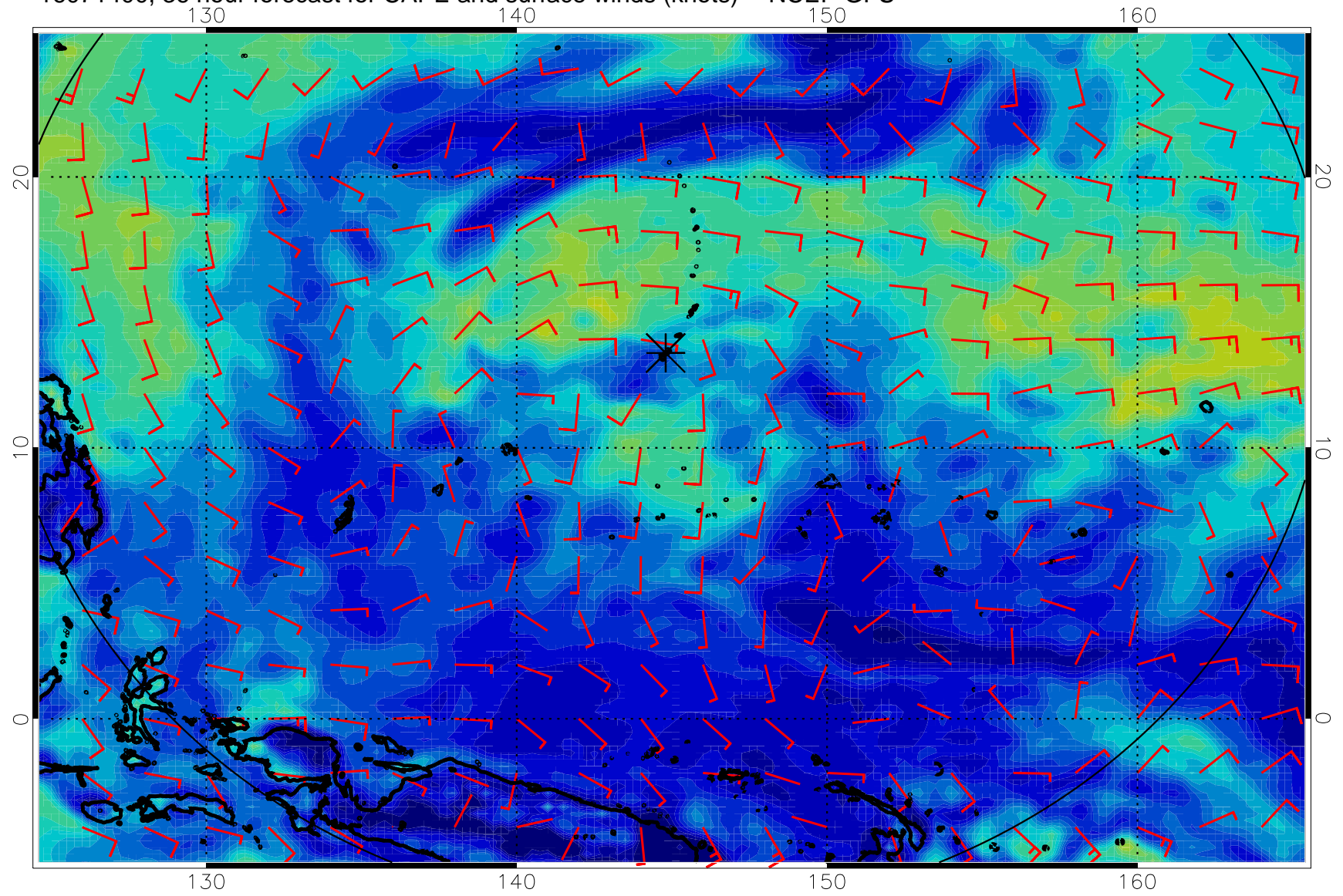
16071312, 24 hour forecast for CAPE and surface winds (knots) -- NCEP GFS



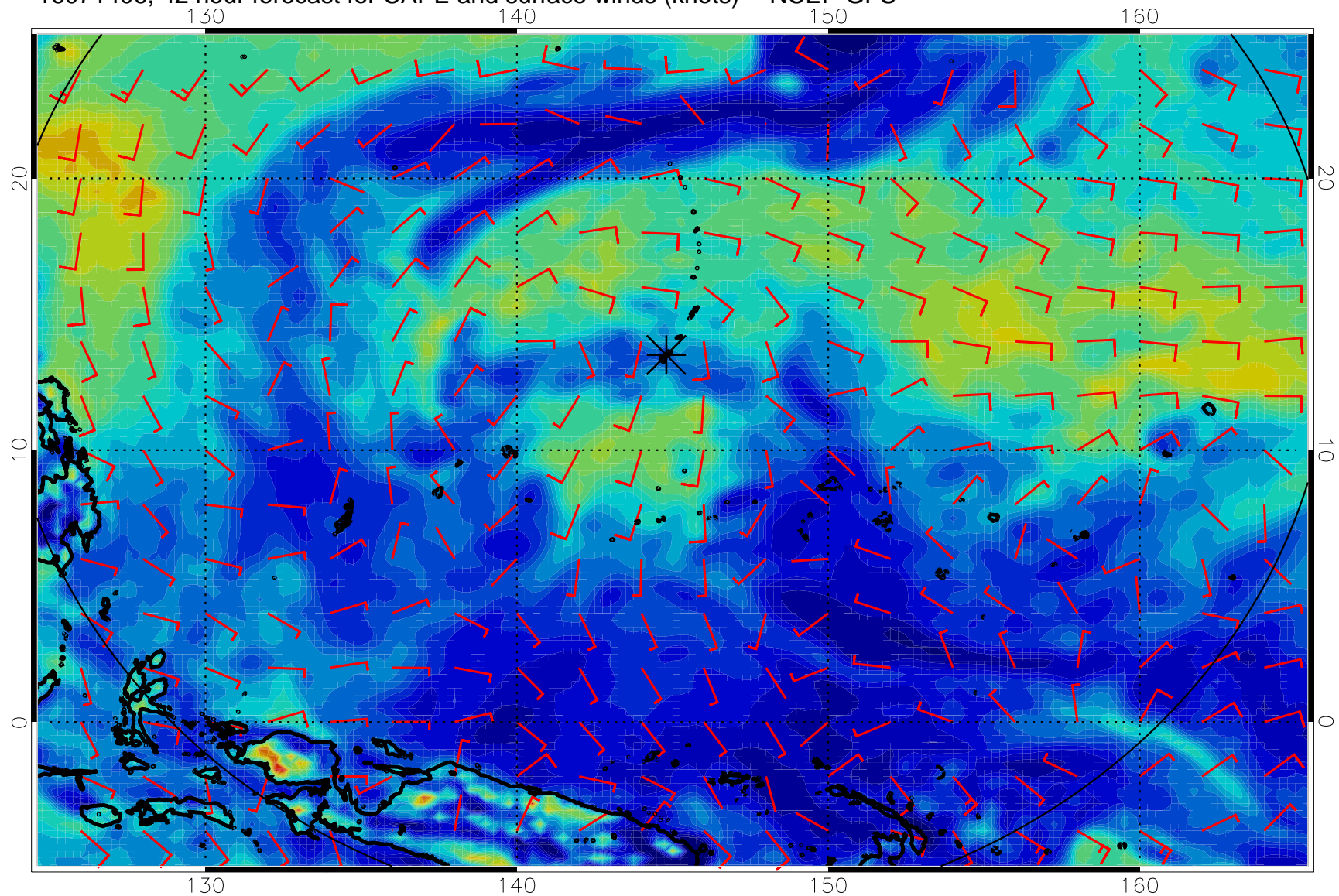
16071318, 30 hour forecast for CAPE and surface winds (knots) -- NCEP GFS



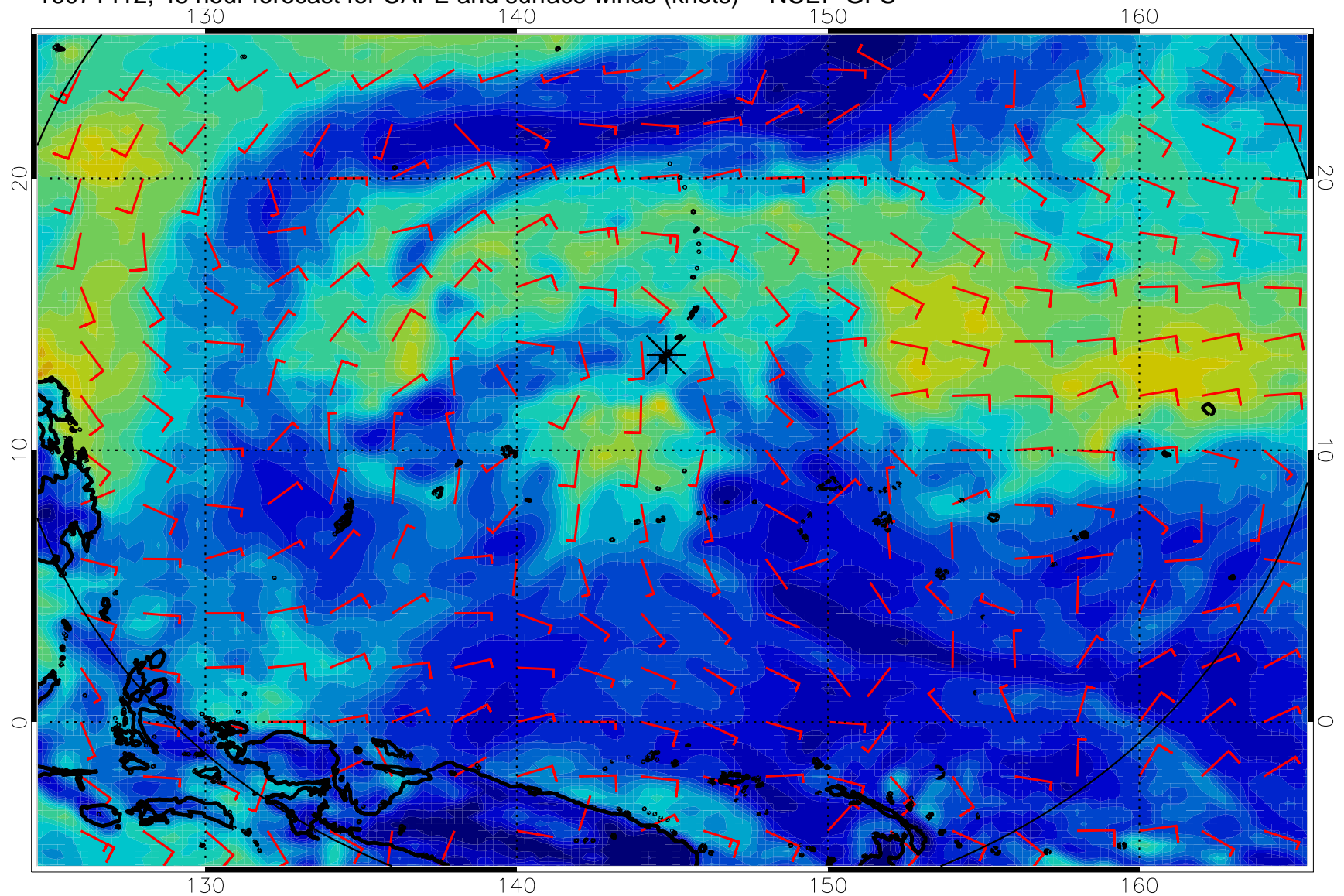
16071400, 36 hour forecast for CAPE and surface winds (knots) -- NCEP GFS



16071406, 42 hour forecast for CAPE and surface winds (knots) -- NCEP GFS

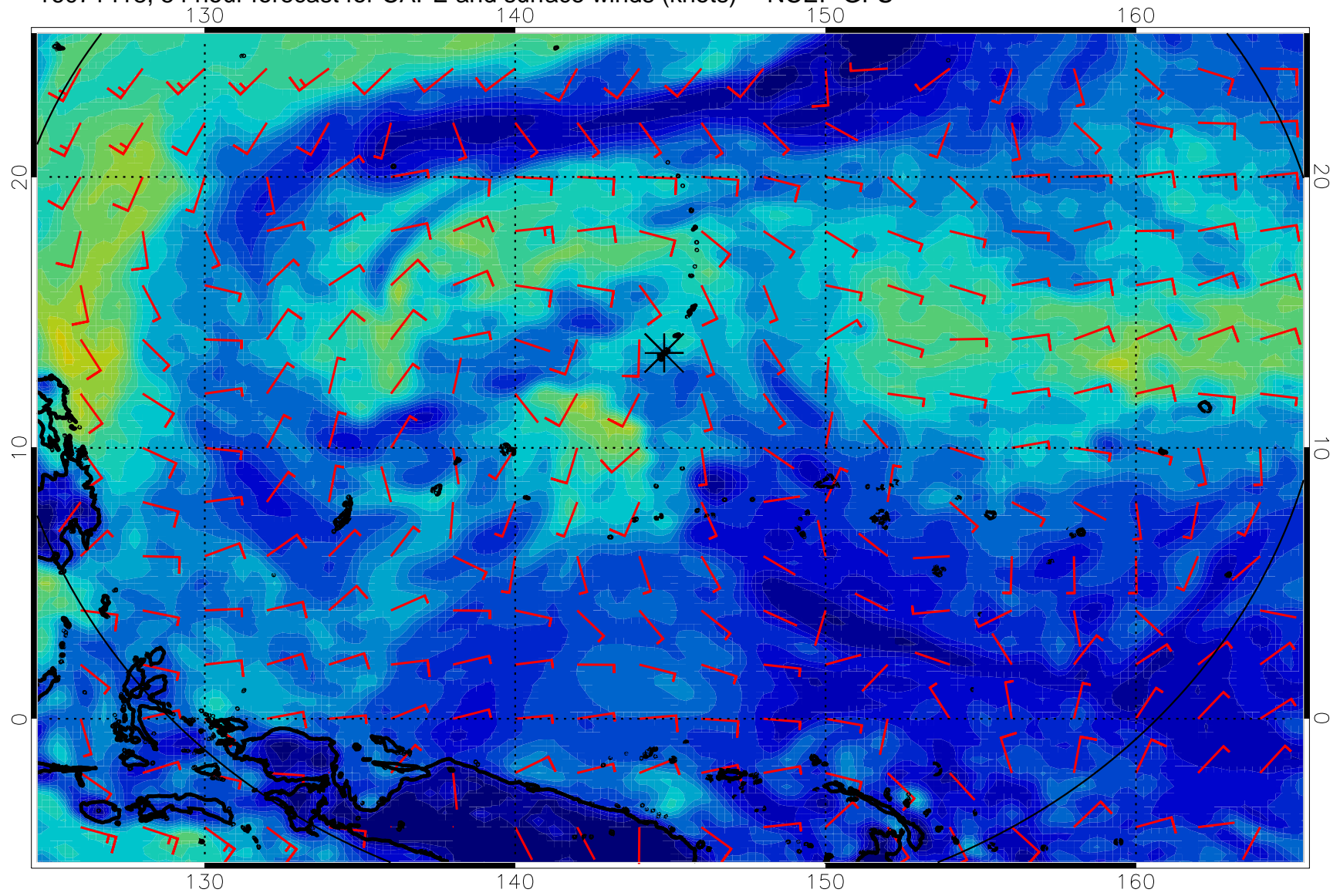


16071412, 48 hour forecast for CAPE and surface winds (knots) -- NCEP GFS

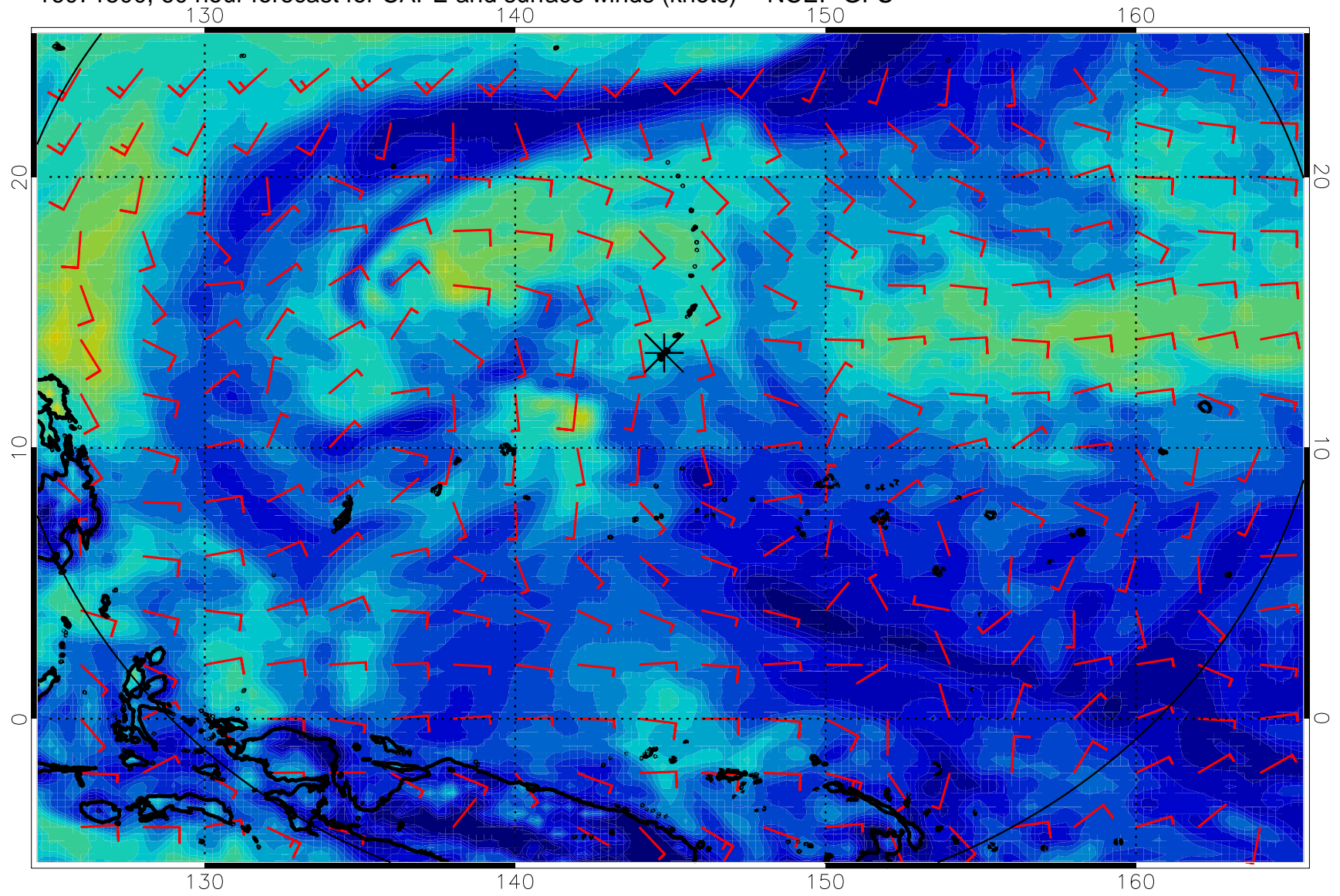




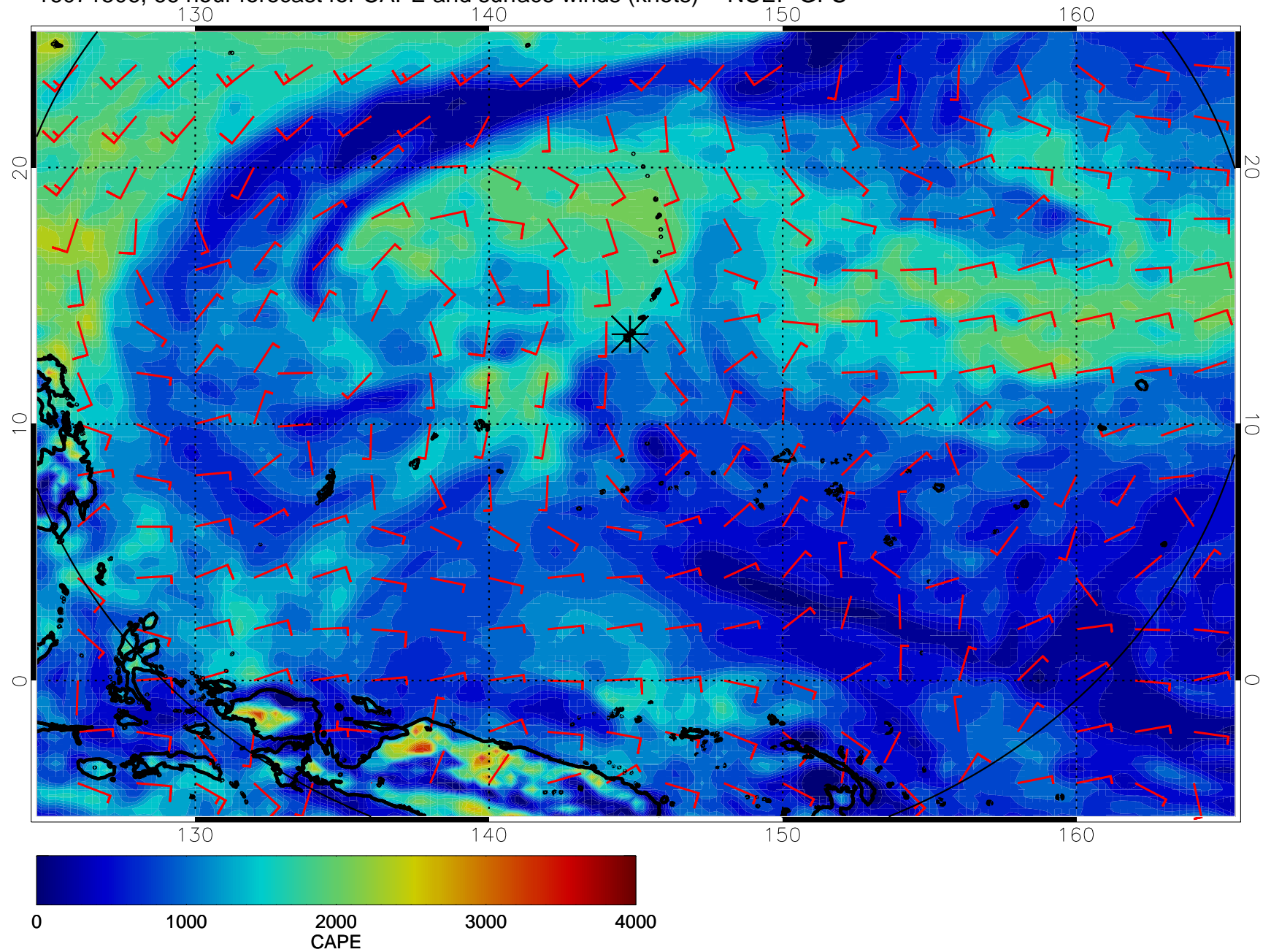
16071418, 54 hour forecast for CAPE and surface winds (knots) -- NCEP GFS



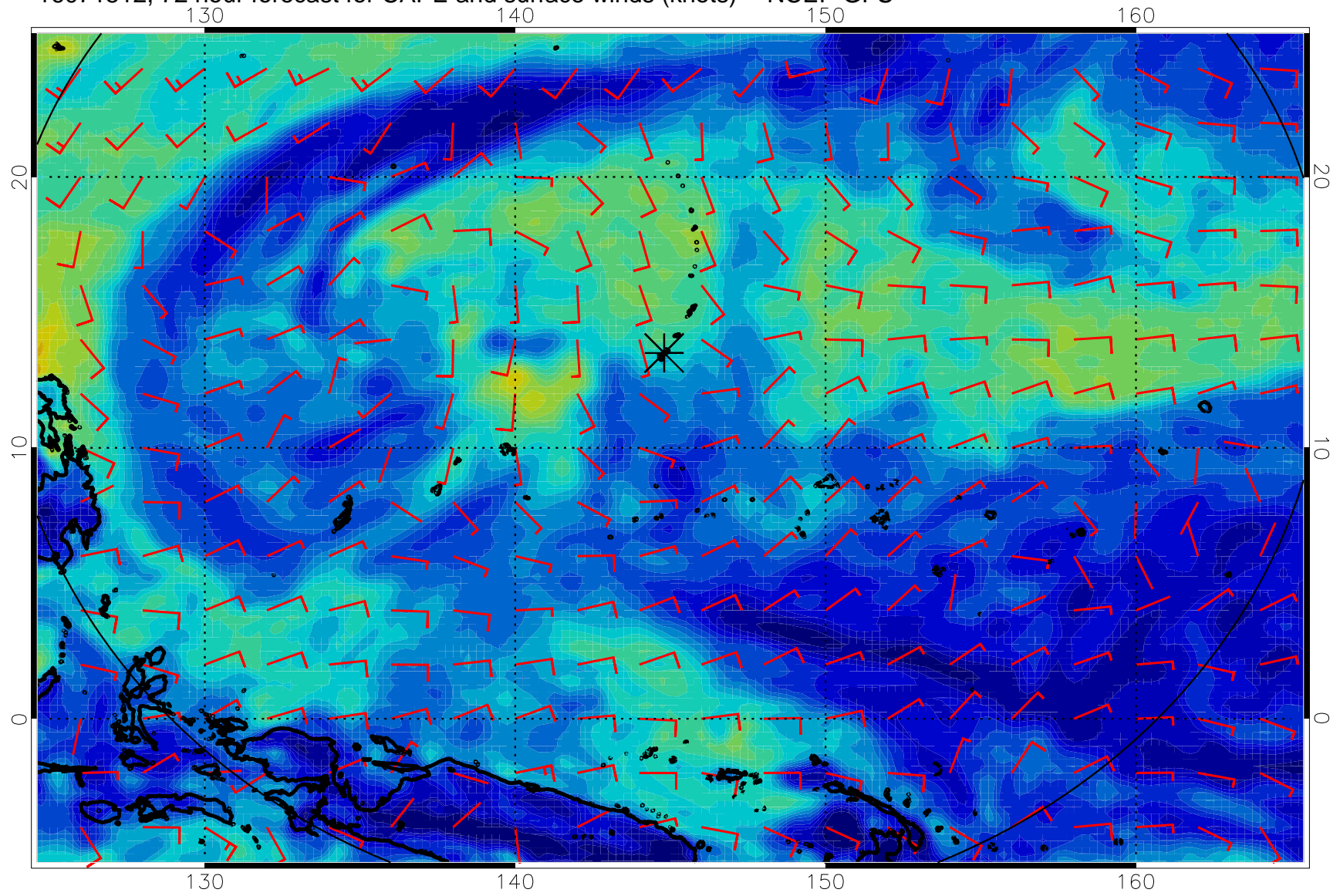
16071500, 60 hour forecast for CAPE and surface winds (knots) -- NCEP GFS



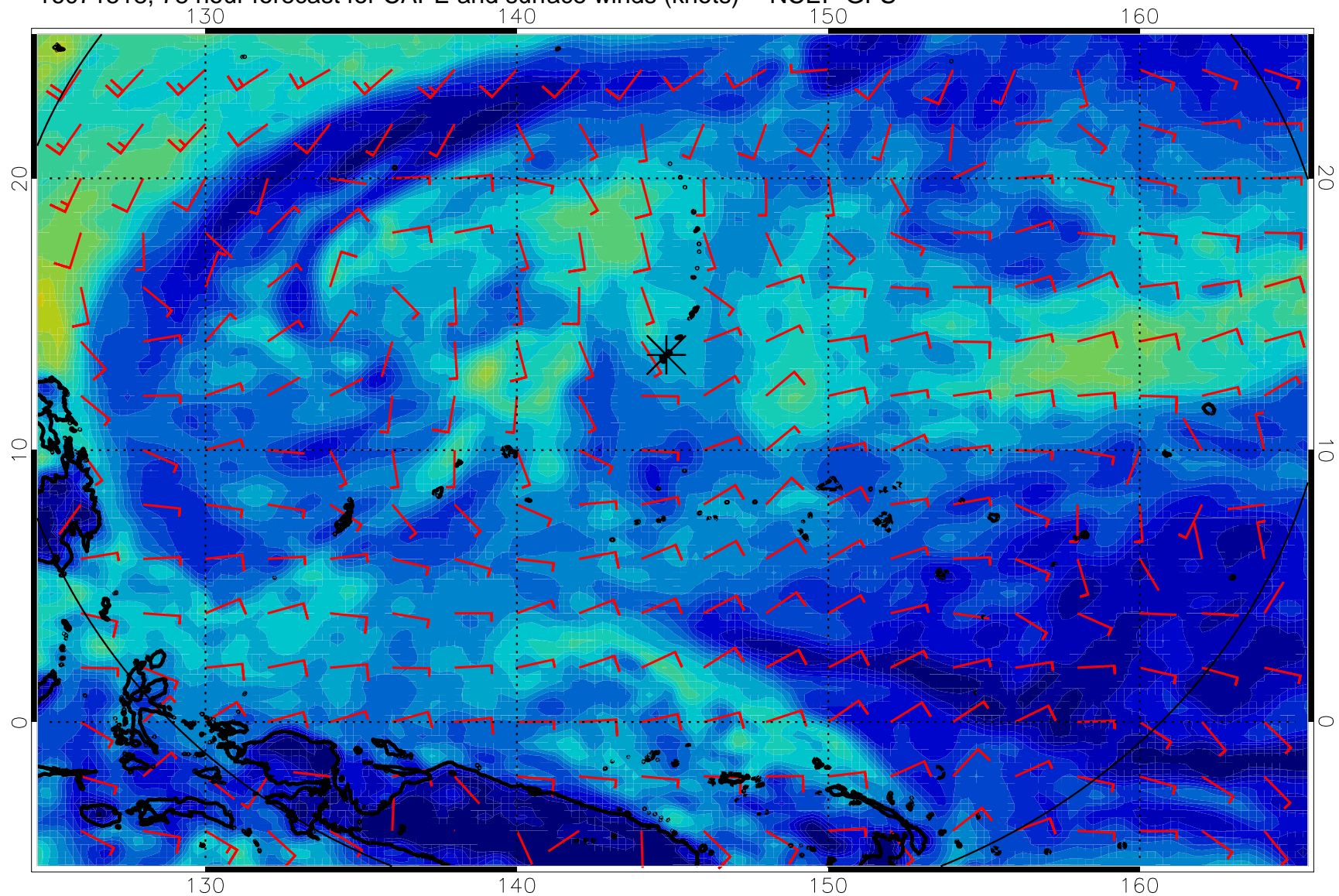
16071506, 66 hour forecast for CAPE and surface winds (knots) -- NCEP GFS



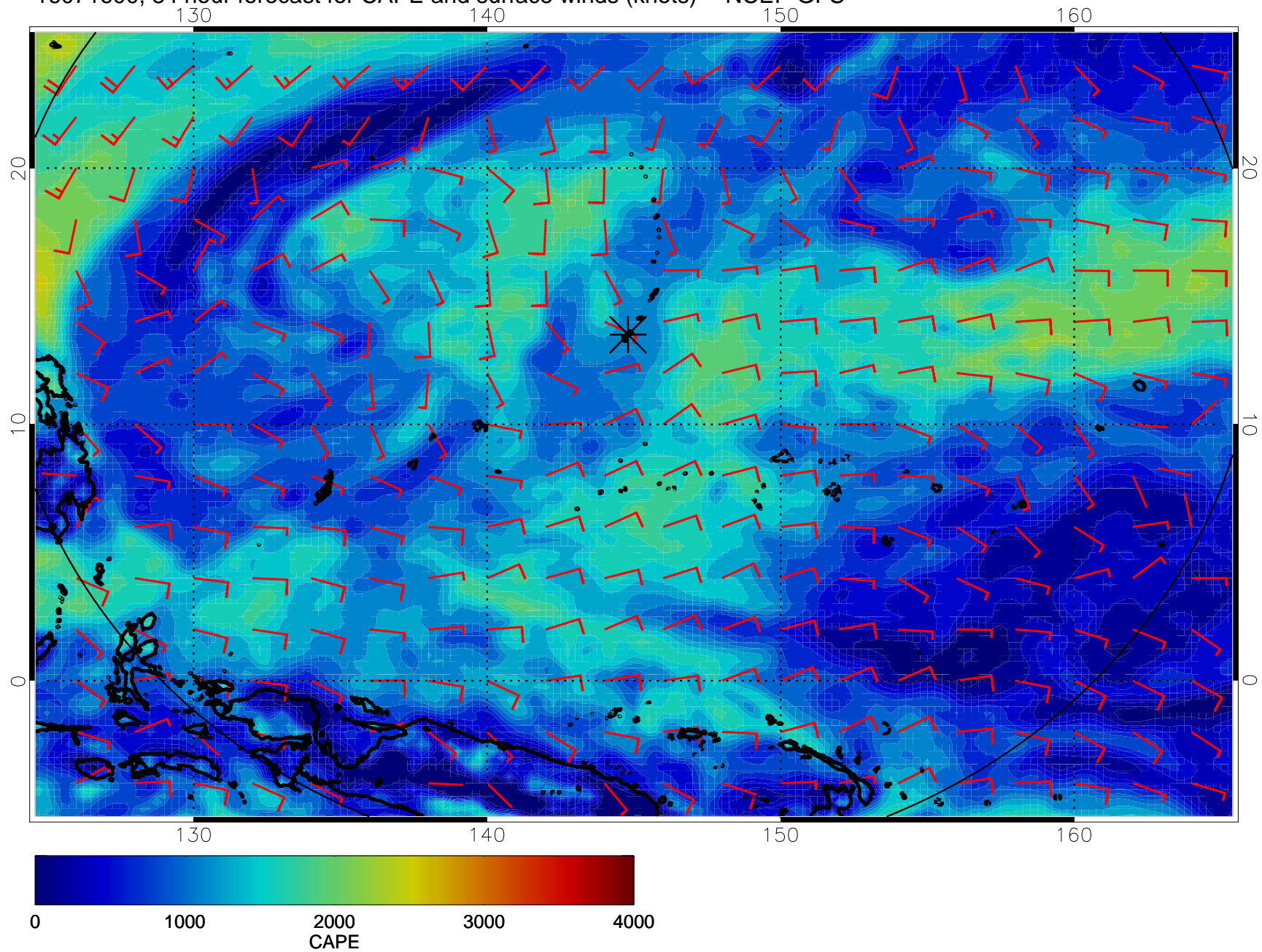
16071512, 72 hour forecast for CAPE and surface winds (knots) -- NCEP GFS



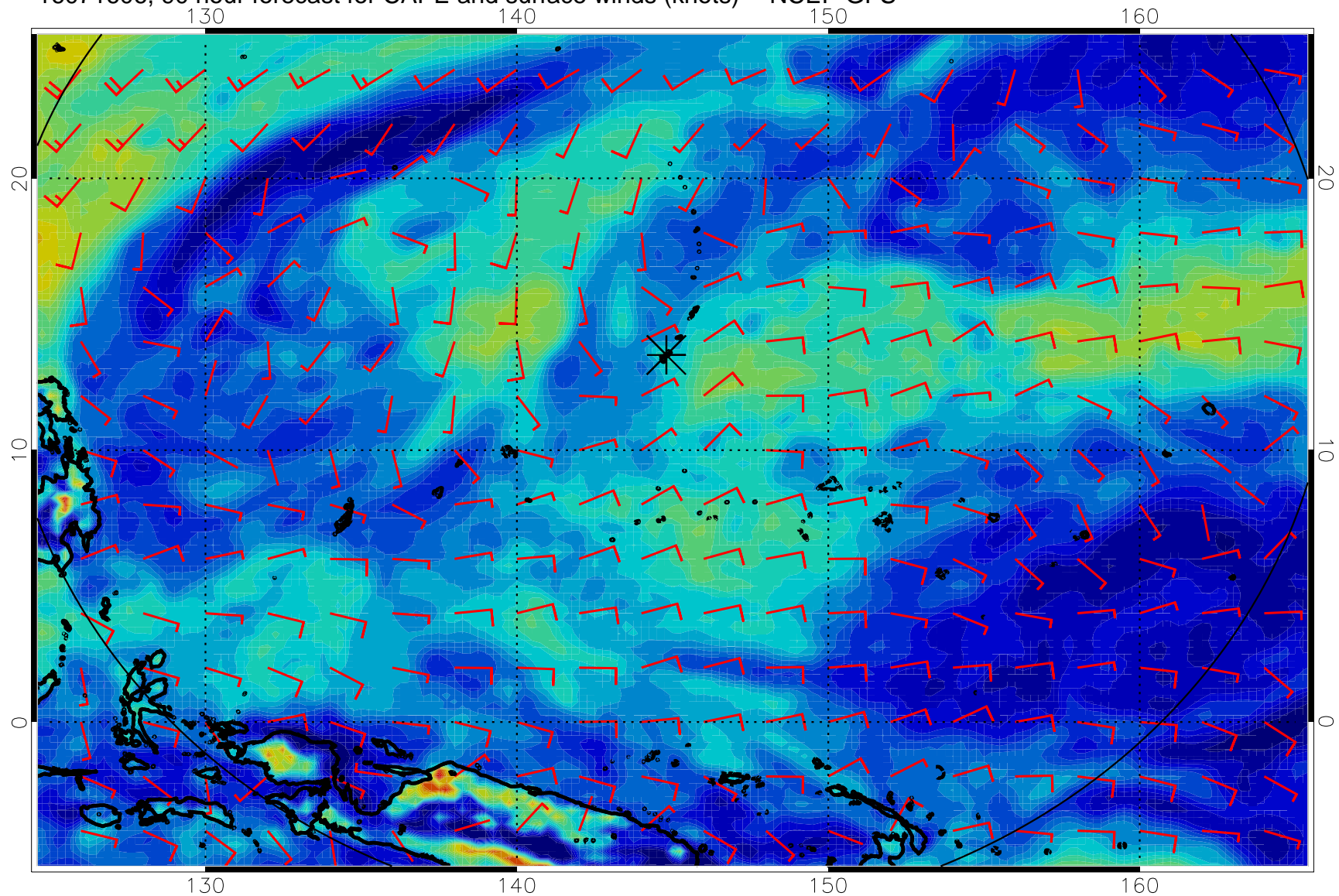
16071518, 78 hour forecast for CAPE and surface winds (knots) -- NCEP GFS



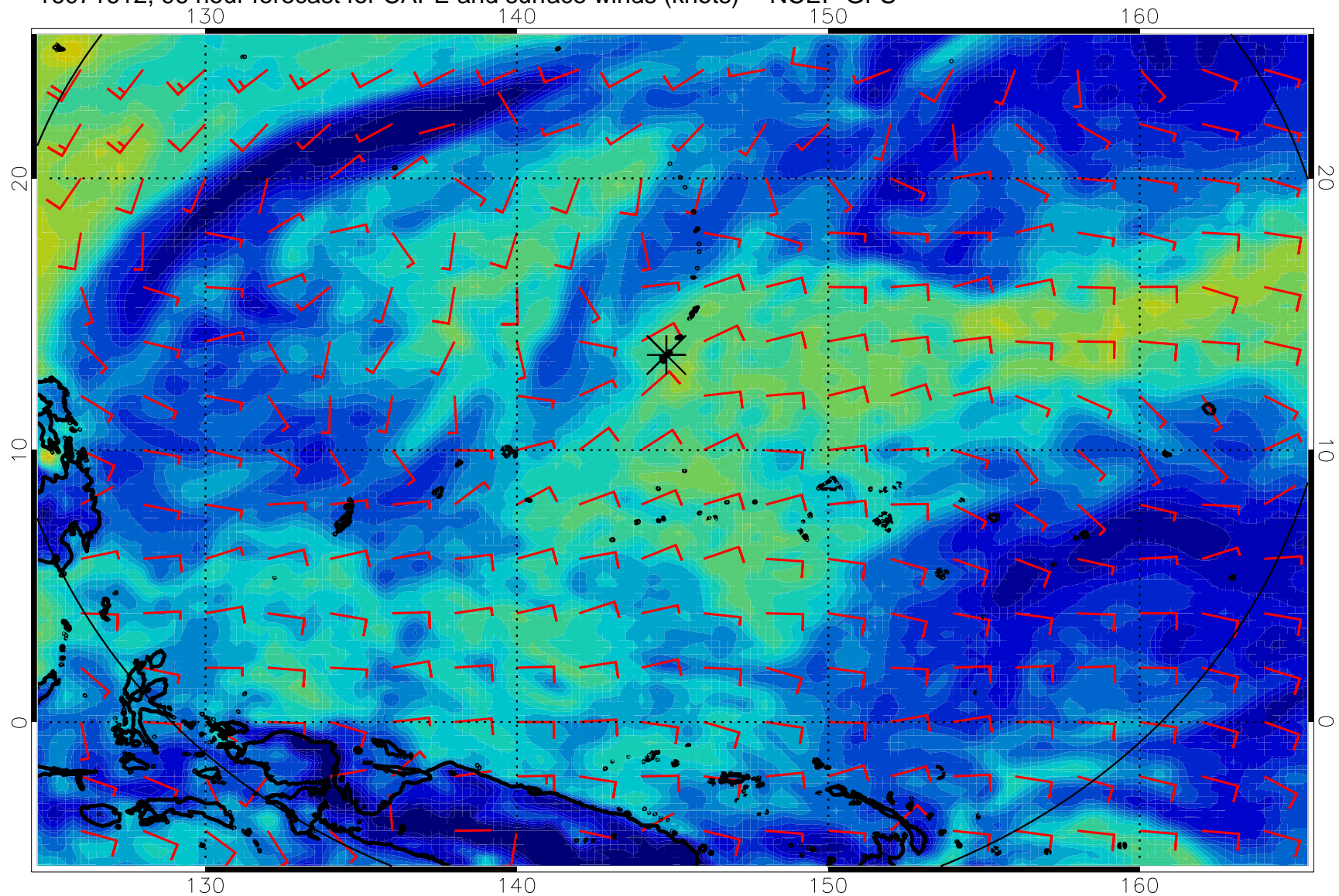
16071600, 84 hour forecast for CAPE and surface winds (knots) -- NCEP GFS



16071606, 90 hour forecast for CAPE and surface winds (knots) -- NCEP GFS

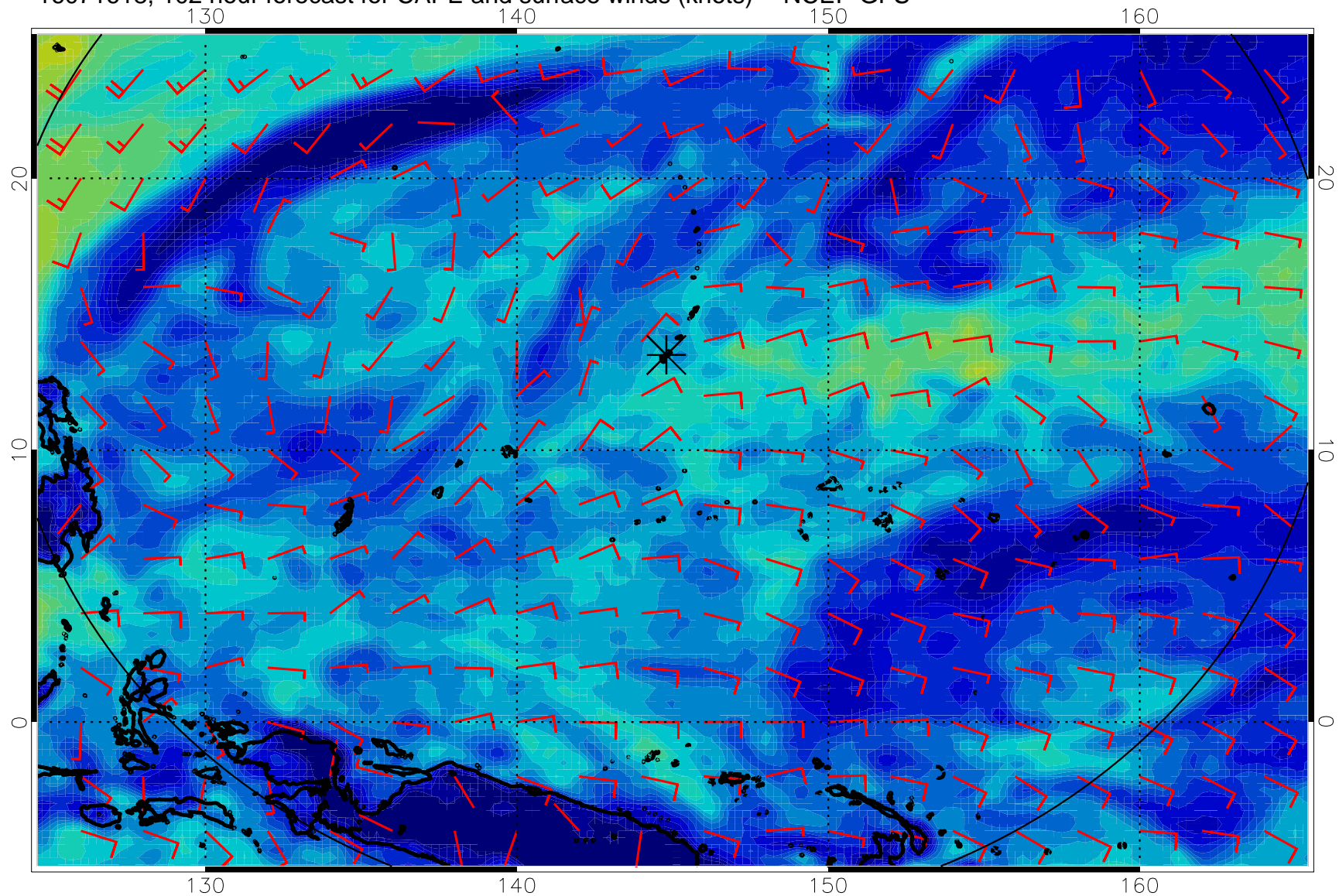


16071612, 96 hour forecast for CAPE and surface winds (knots) -- NCEP GFS

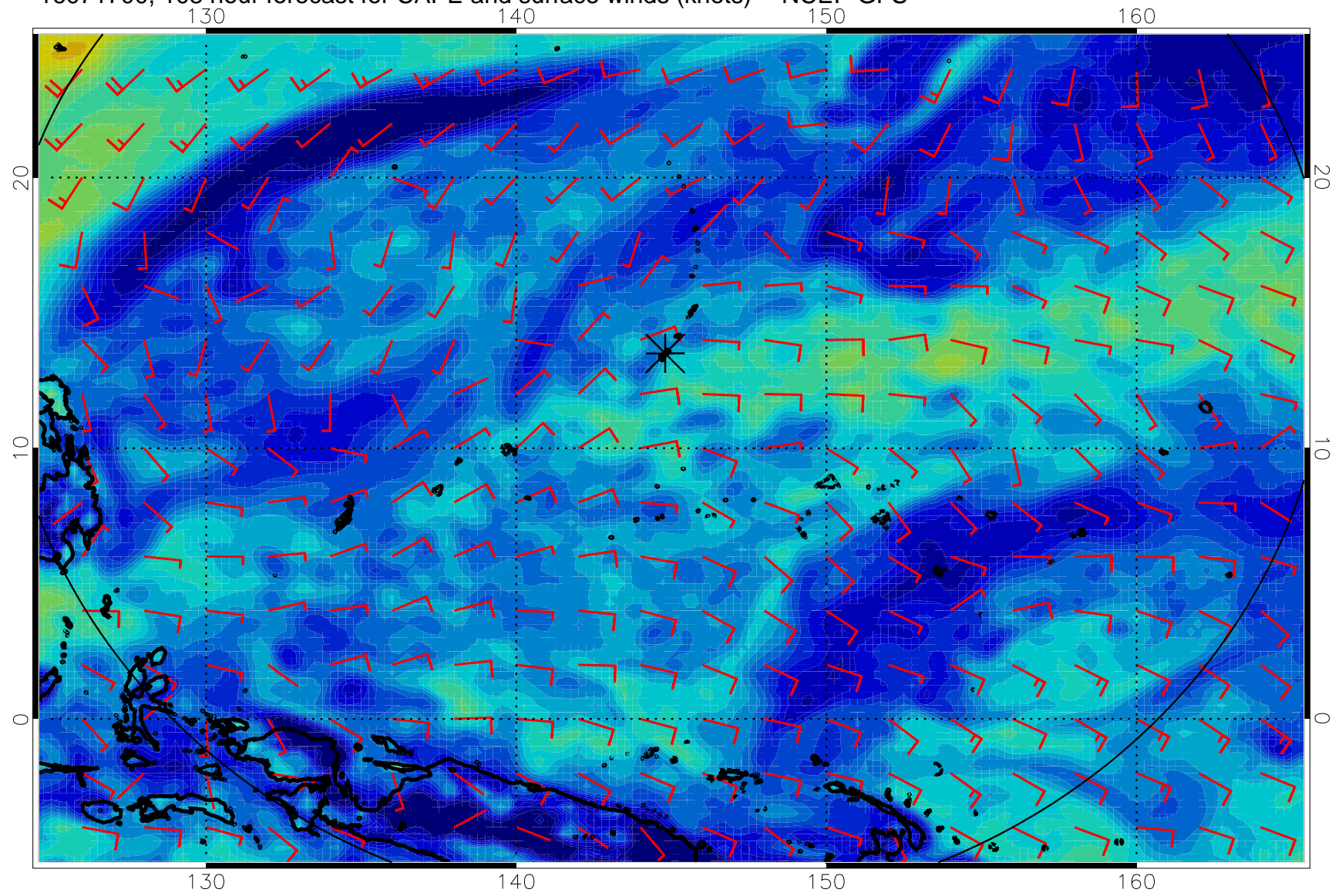




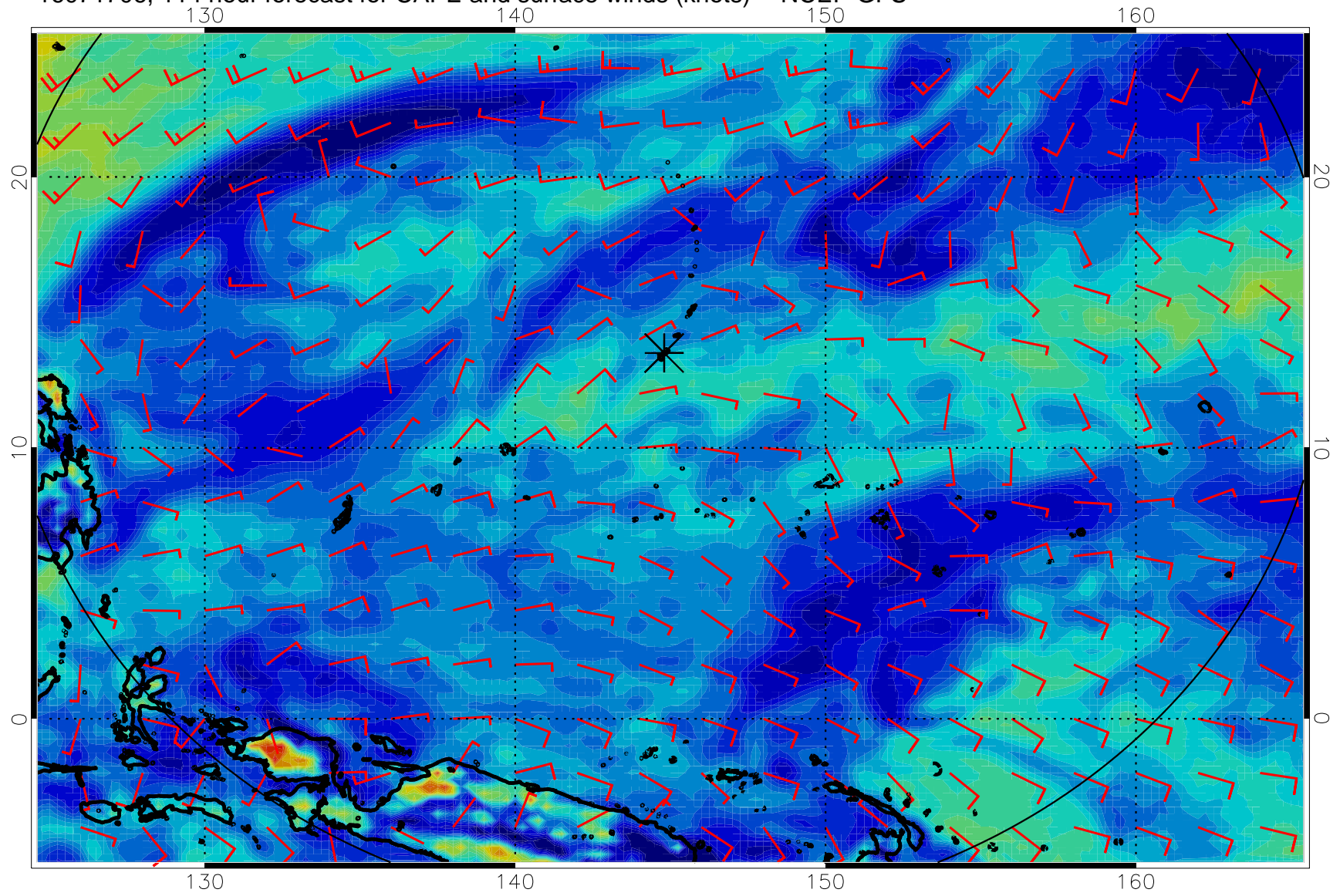
16071618, 102 hour forecast for CAPE and surface winds (knots) -- NCEP GFS



16071700, 108 hour forecast for CAPE and surface winds (knots) -- NCEP GFS



16071706, 114 hour forecast for CAPE and surface winds (knots) -- NCEP GFS



16071712, 120 hour forecast for CAPE and surface winds (knots) -- NCEP GFS

