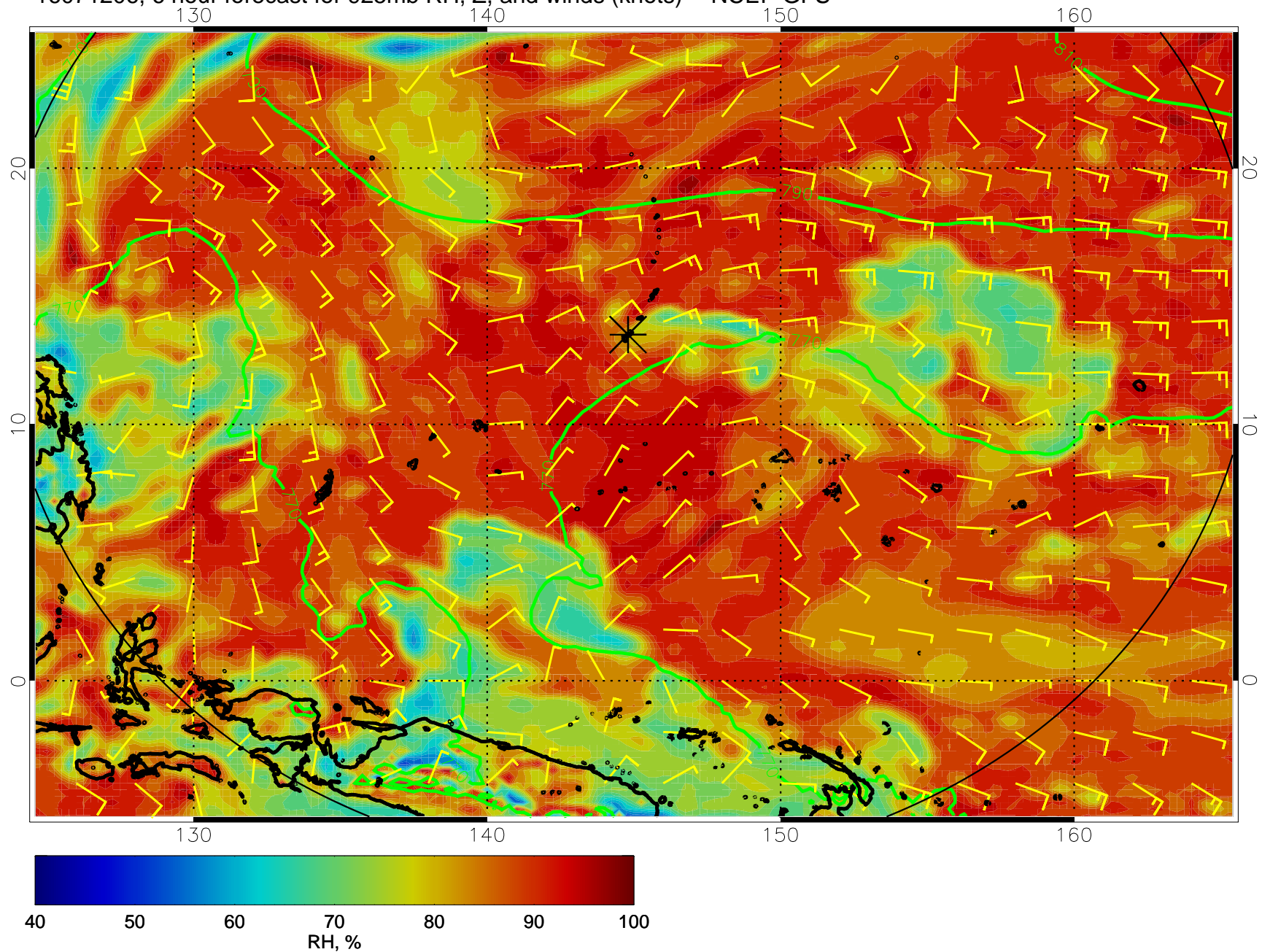
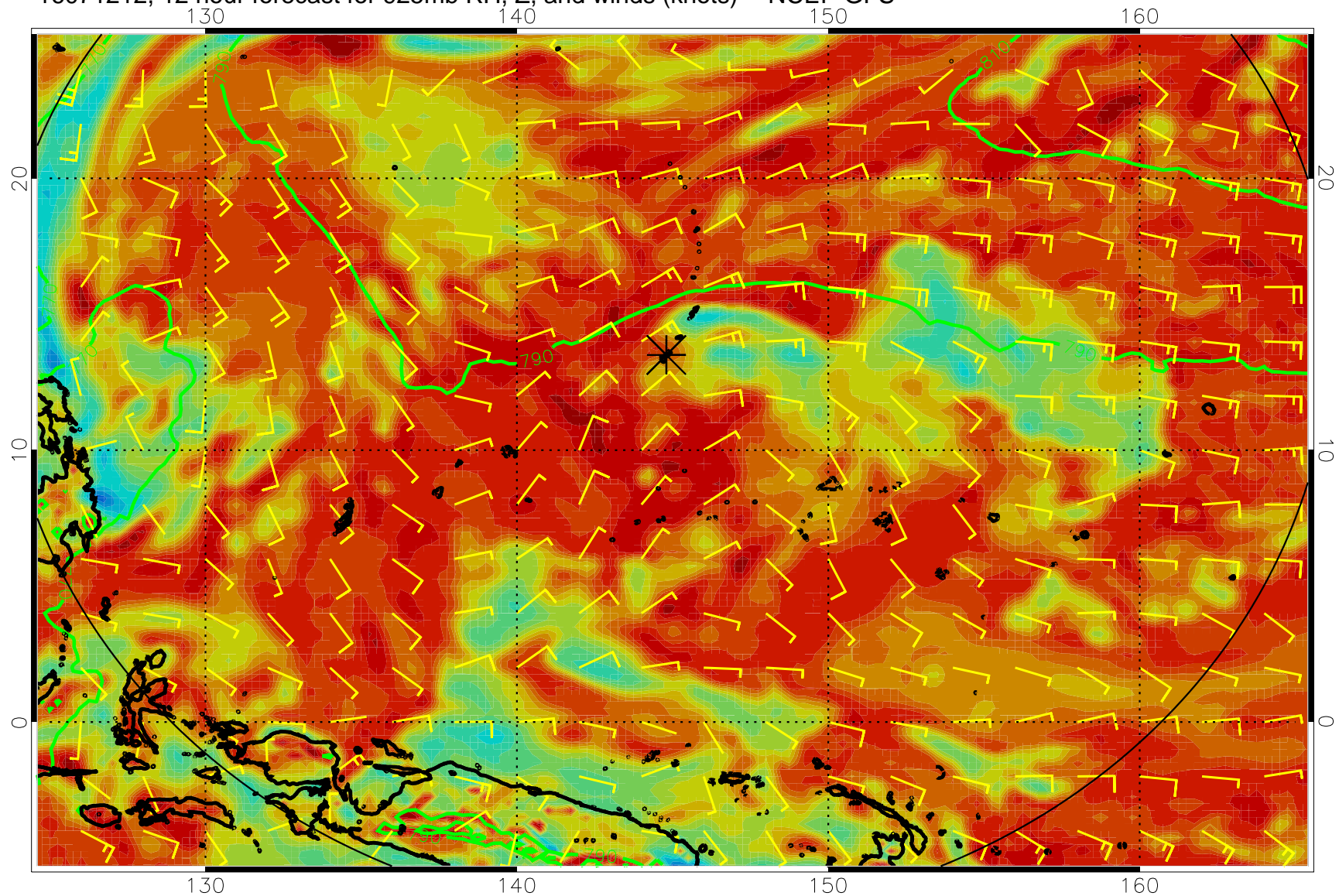


16071206, 6 hour forecast for 925mb RH, Z, and winds (knots) -- NCEP GFS

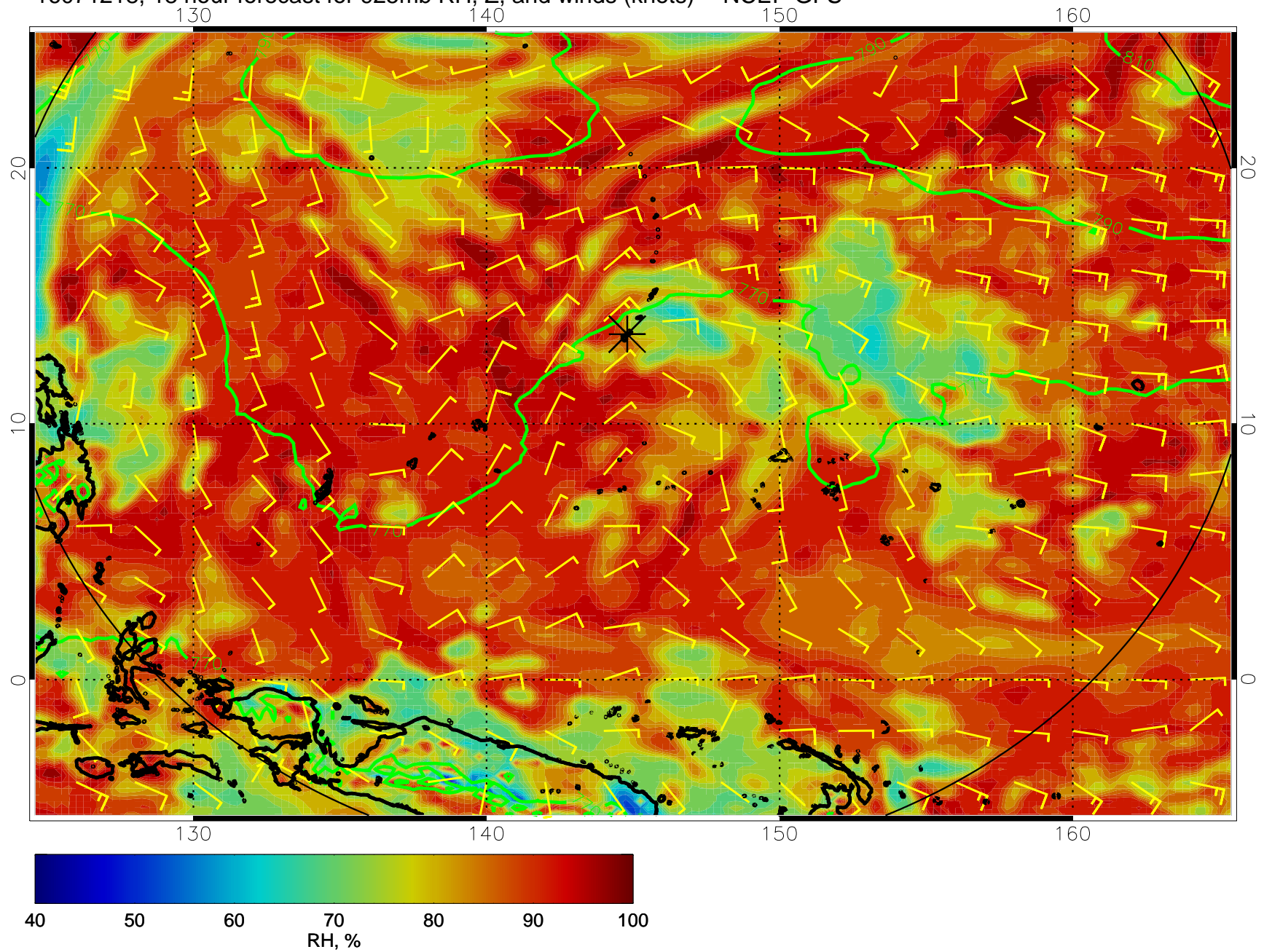


16071212, 12 hour forecast for 925mb RH, Z, and winds (knots) -- NCEP GFS

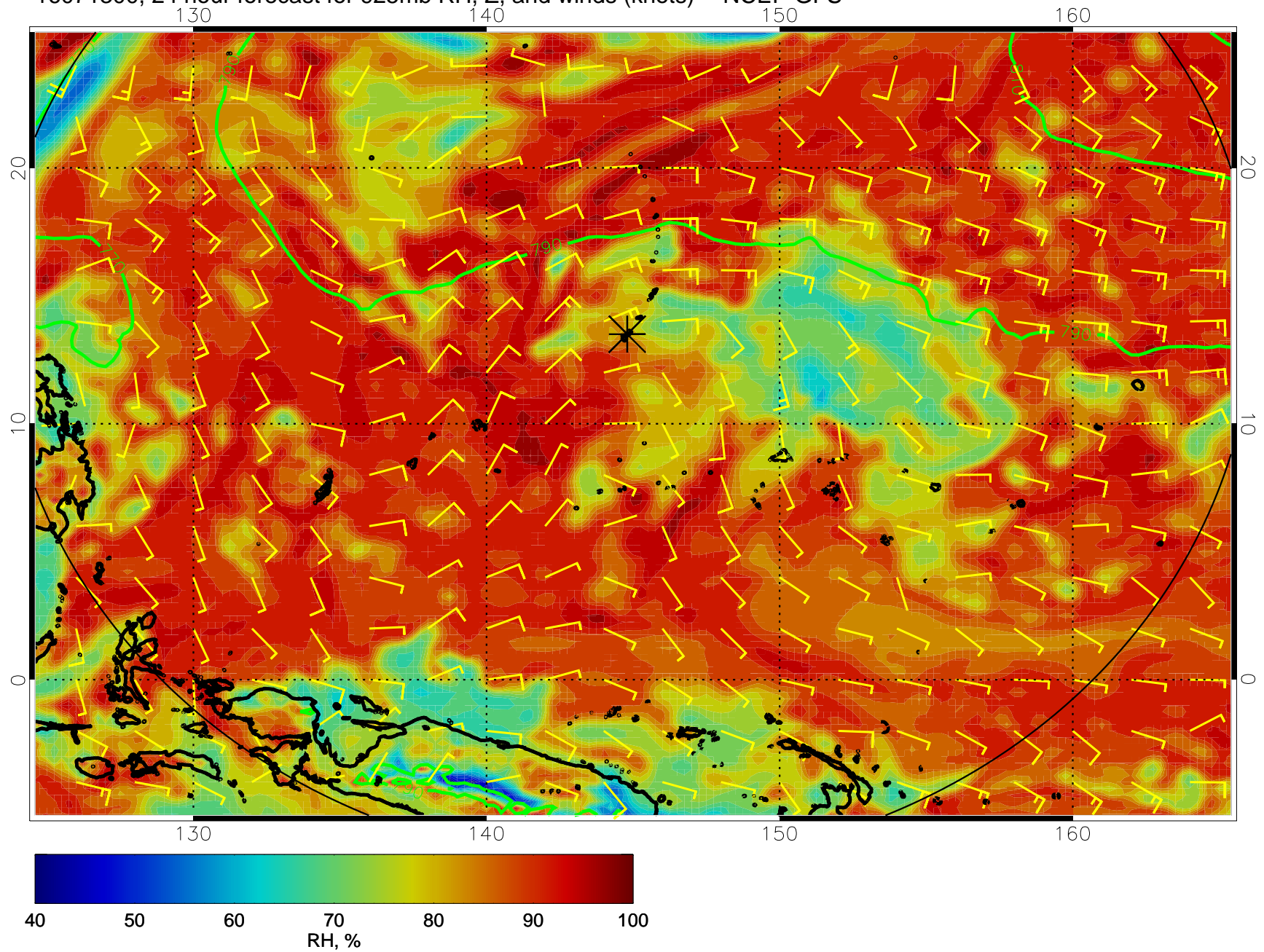




16071218, 18 hour forecast for 925mb RH, Z, and winds (knots) -- NCEP GFS

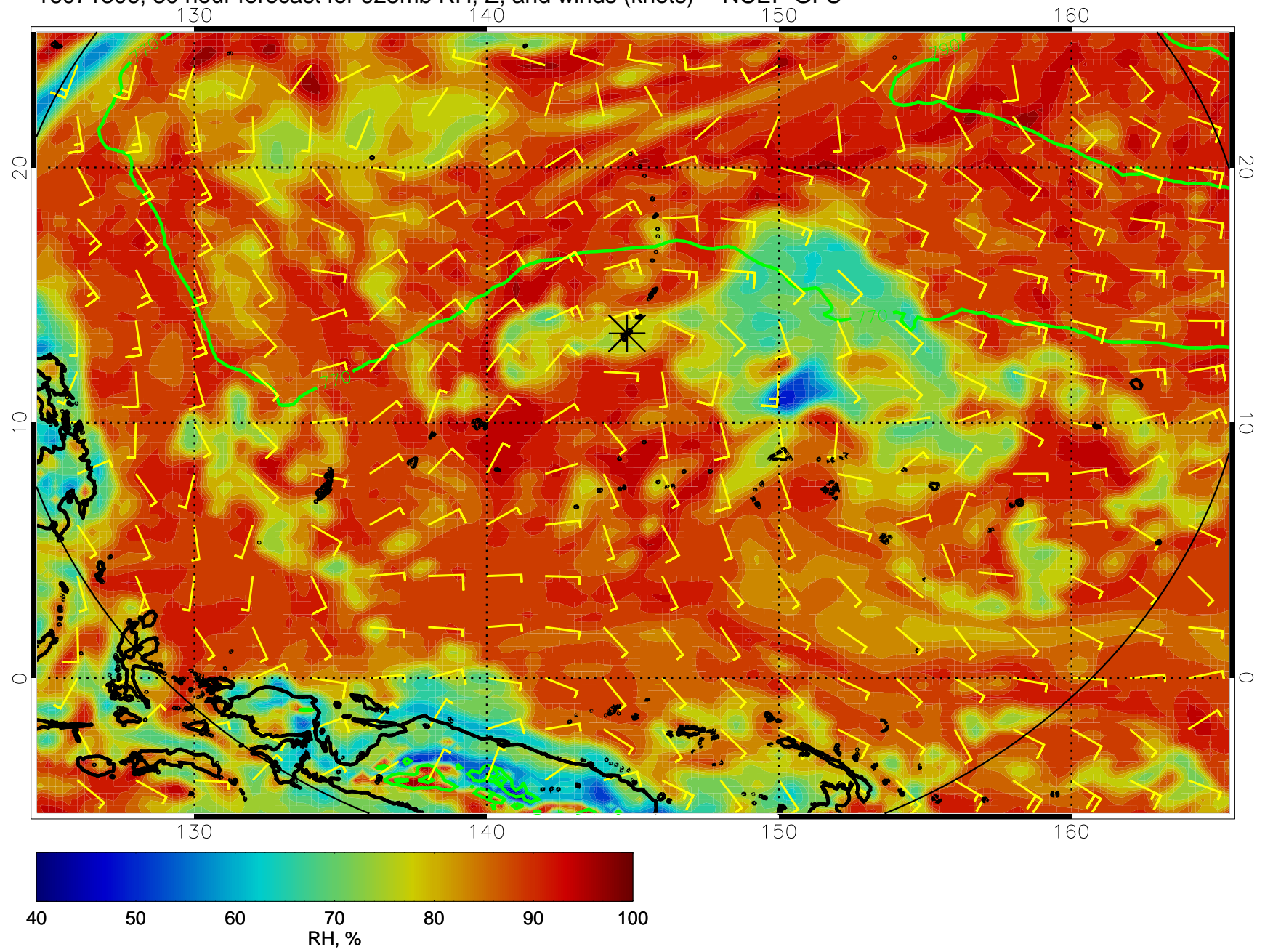


16071300, 24 hour forecast for 925mb RH, Z, and winds (knots) -- NCEP GFS

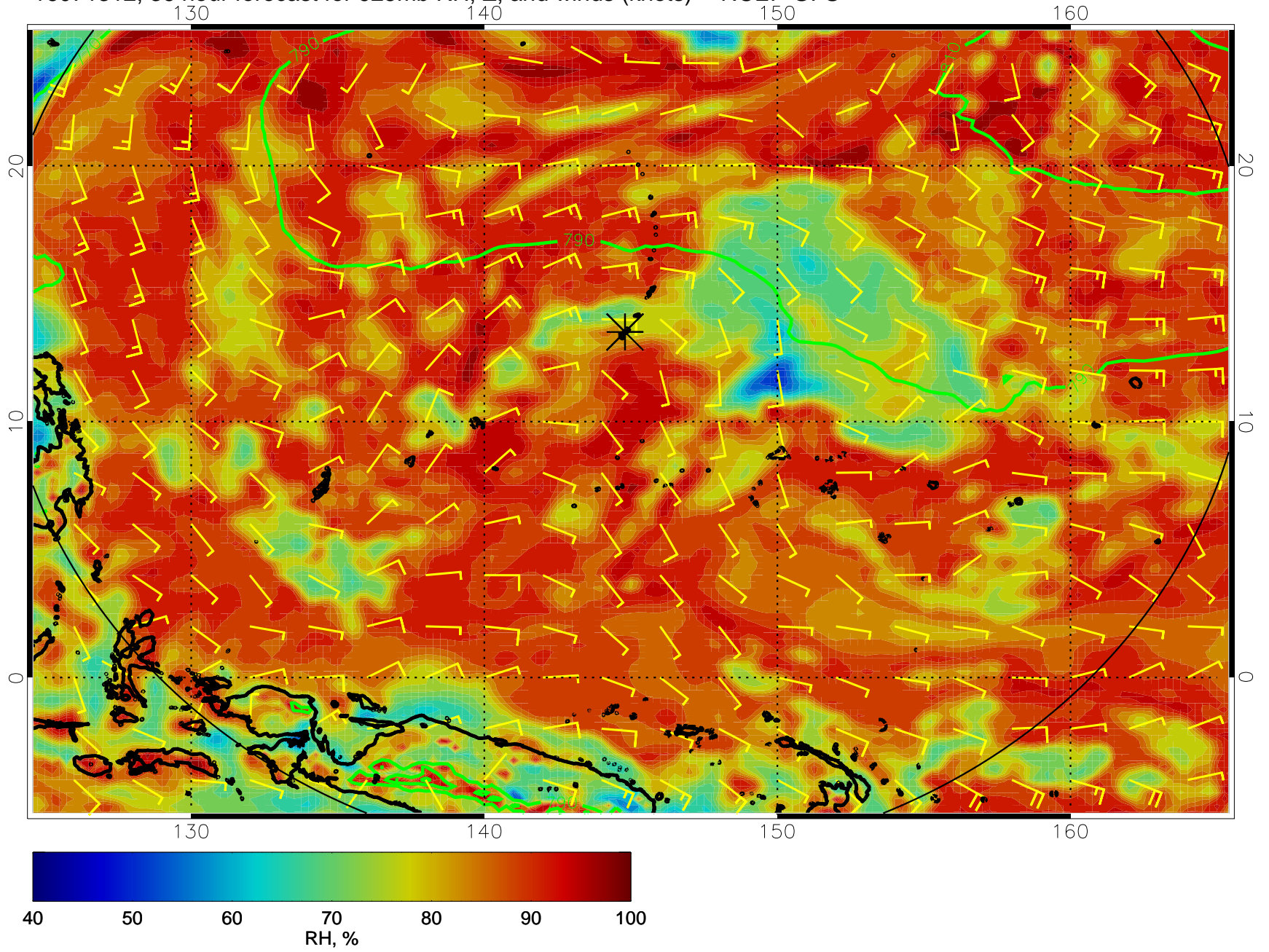




16071306, 30 hour forecast for 925mb RH, Z, and winds (knots) -- NCEP GFS

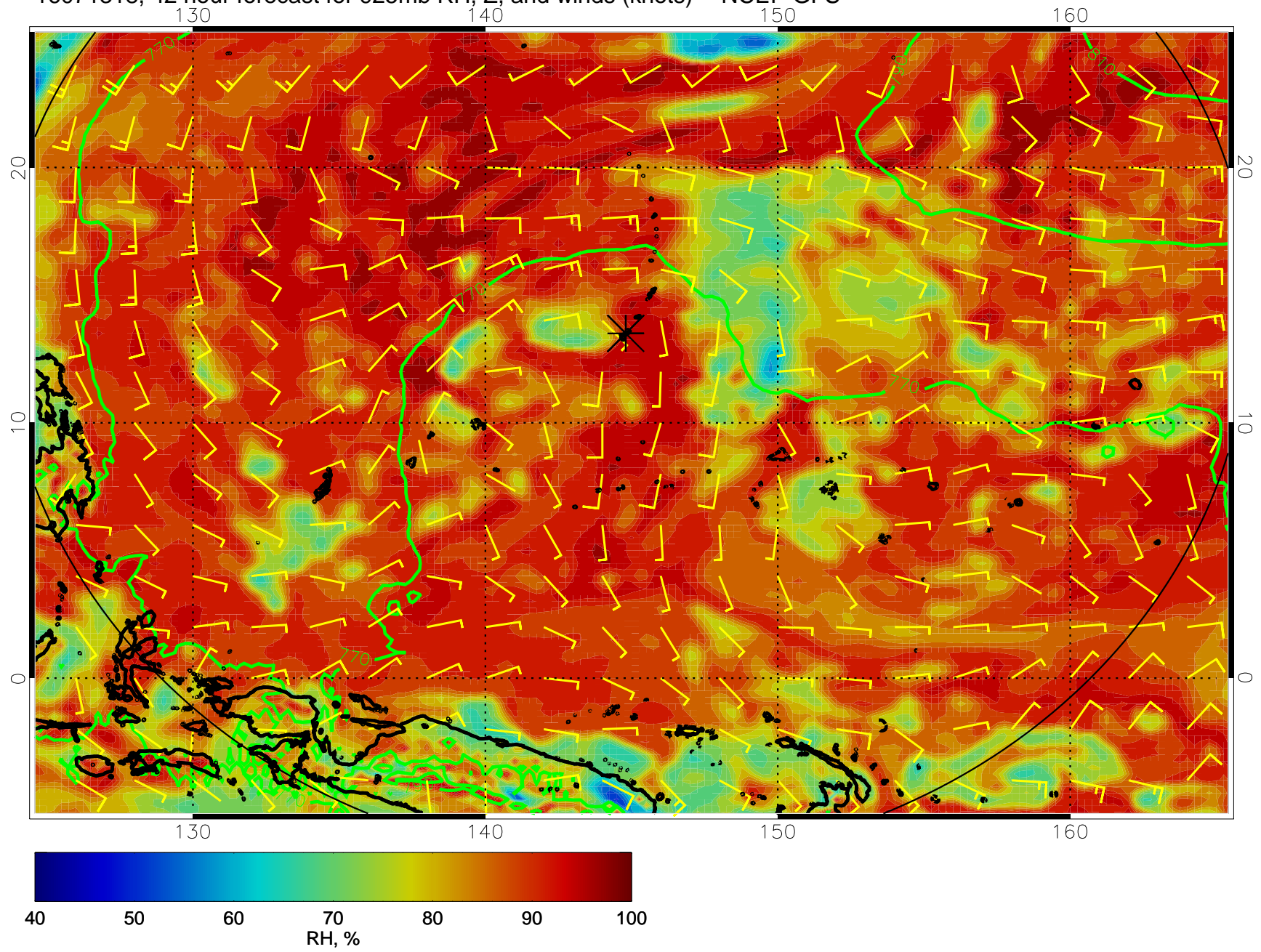


16071312, 36 hour forecast for 925mb RH, Z, and winds (knots) -- NCEP GFS

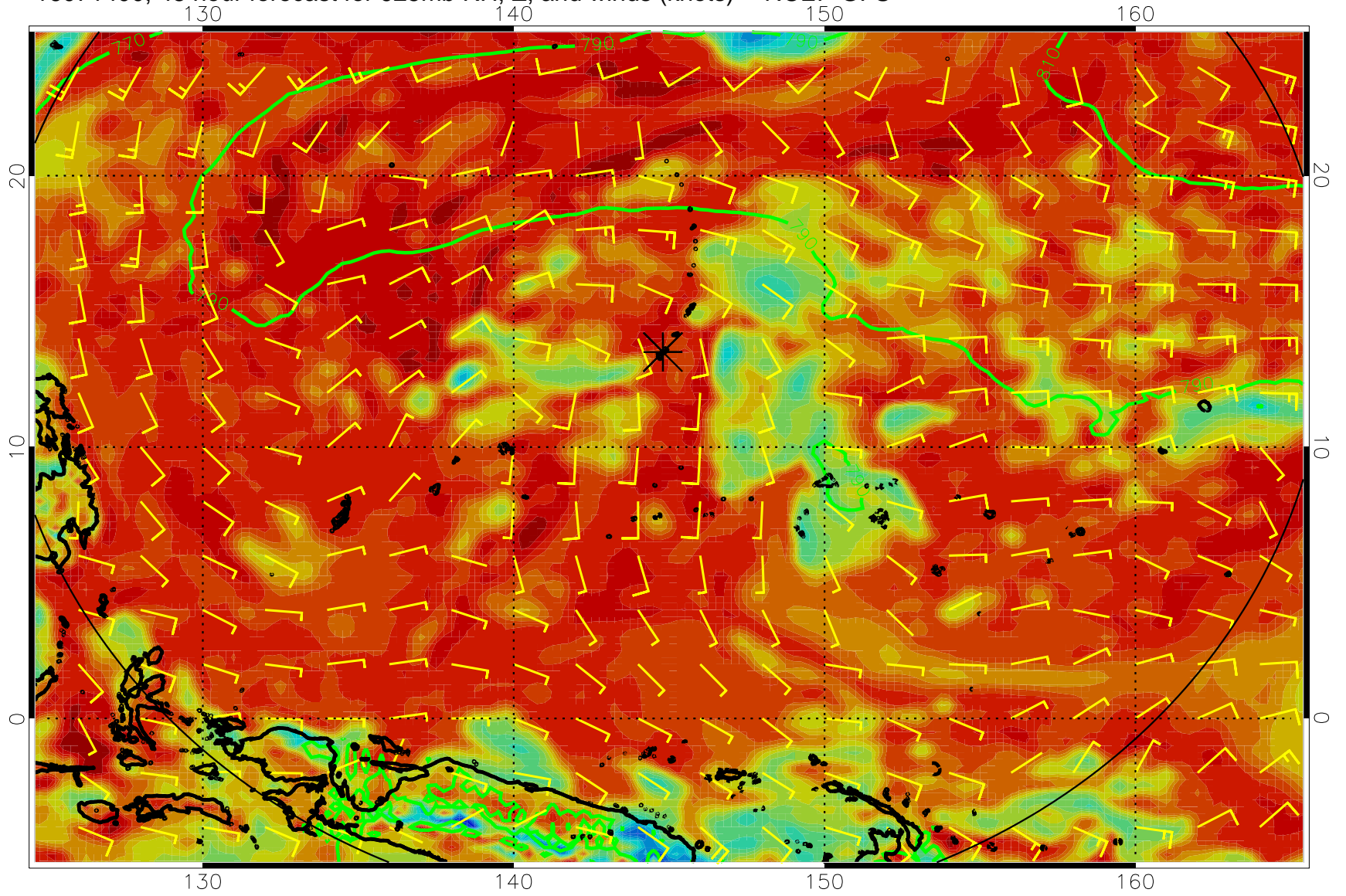




16071318, 42 hour forecast for 925mb RH, Z, and winds (knots) -- NCEP GFS

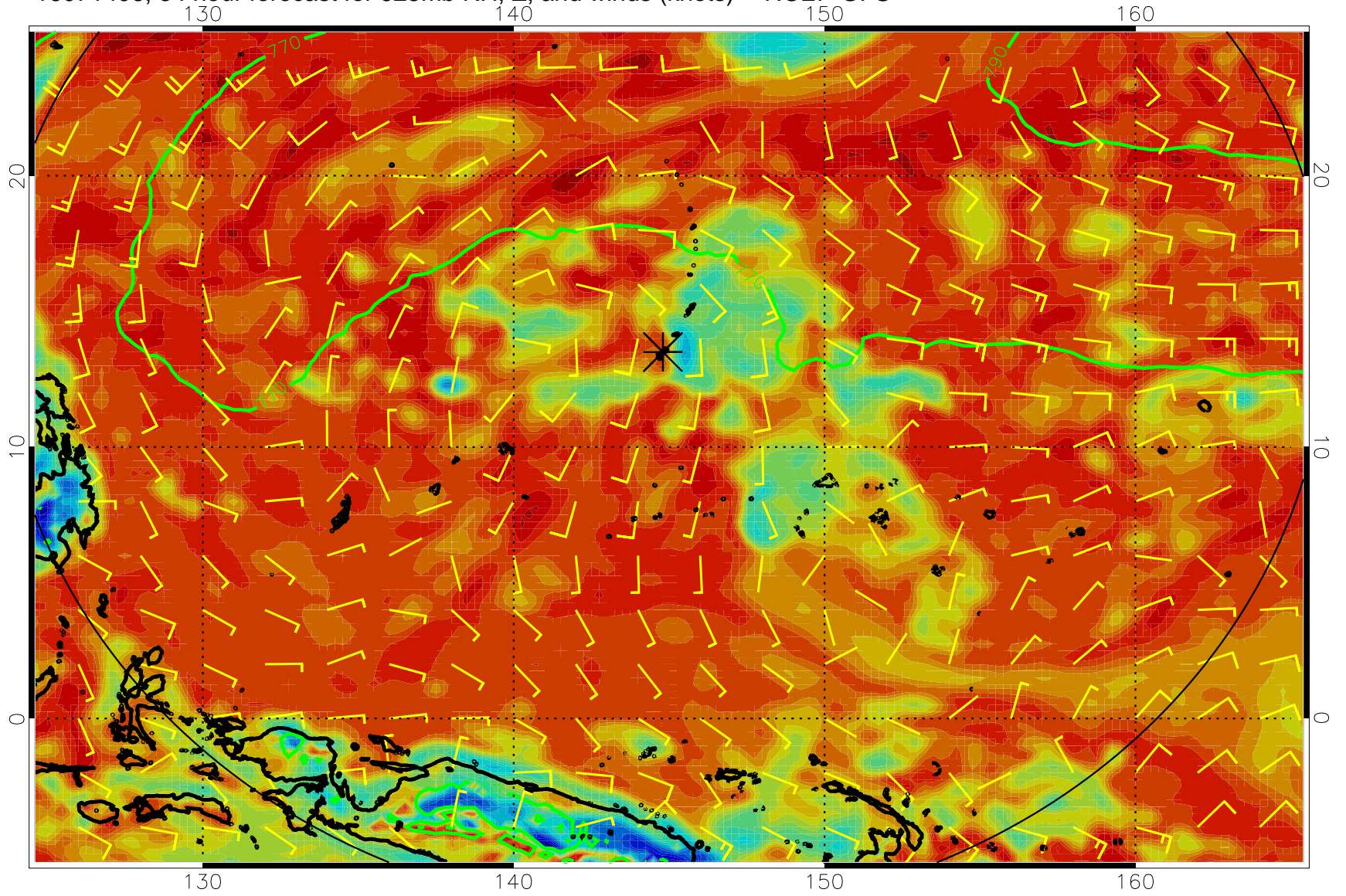


16071400, 48 hour forecast for 925mb RH, Z, and winds (knots) -- NCEP GFS

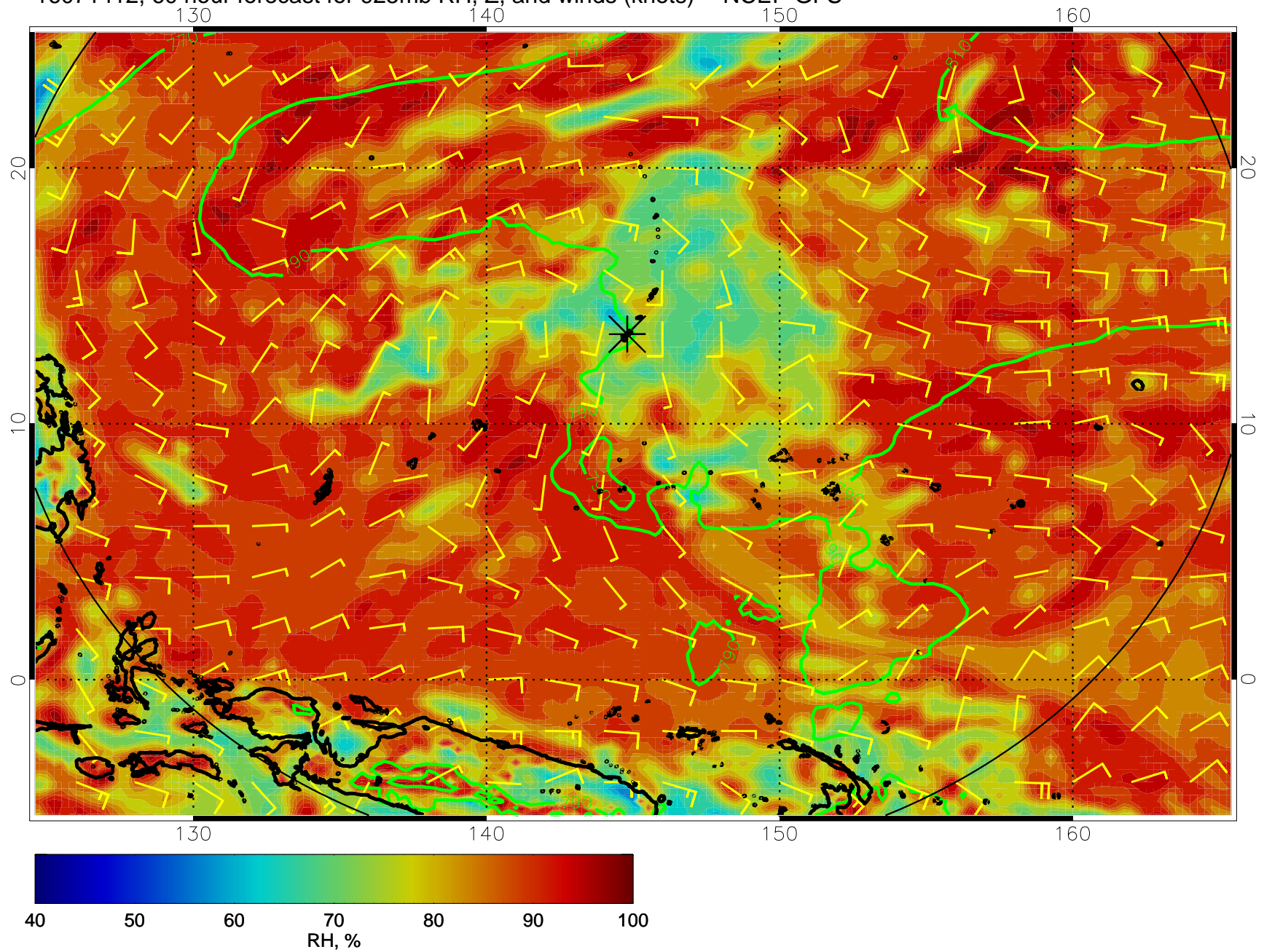




16071406, 54 hour forecast for 925mb RH, Z, and winds (knots) -- NCEP GFS

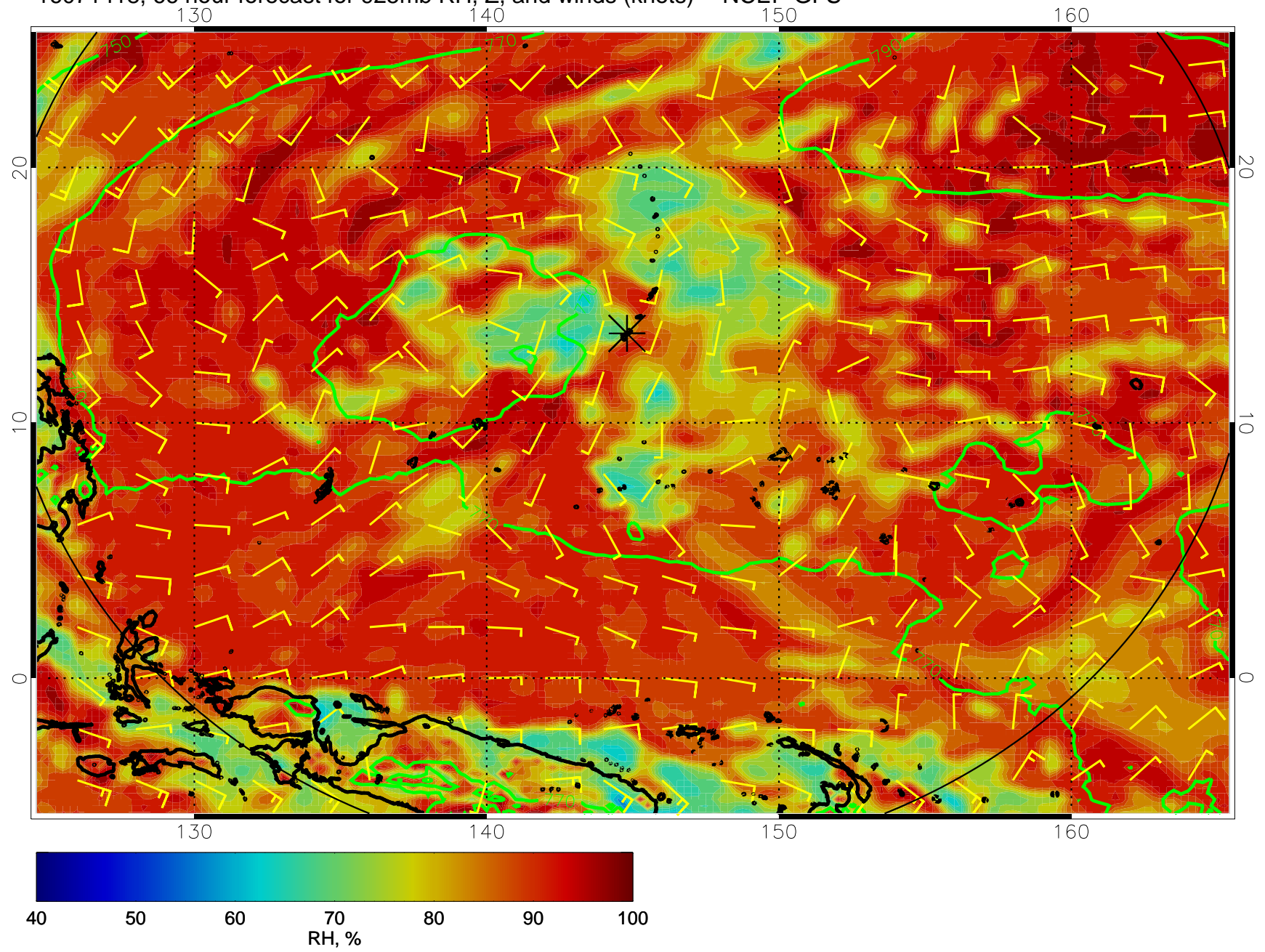


16071412, 60 hour forecast for 925mb RH, Z, and winds (knots) -- NCEP GFS

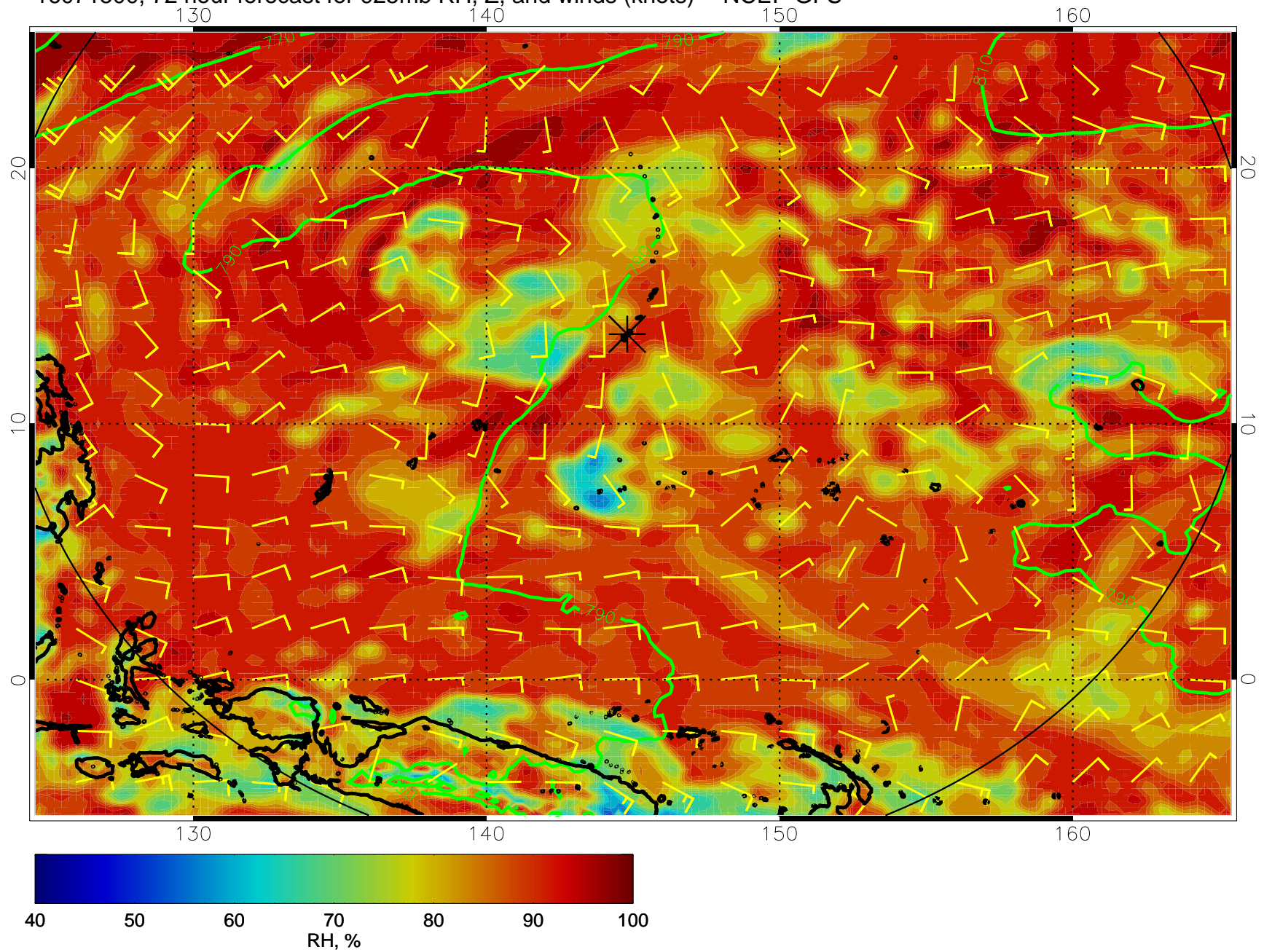




16071418, 66 hour forecast for 925mb RH, Z, and winds (knots) -- NCEP GFS

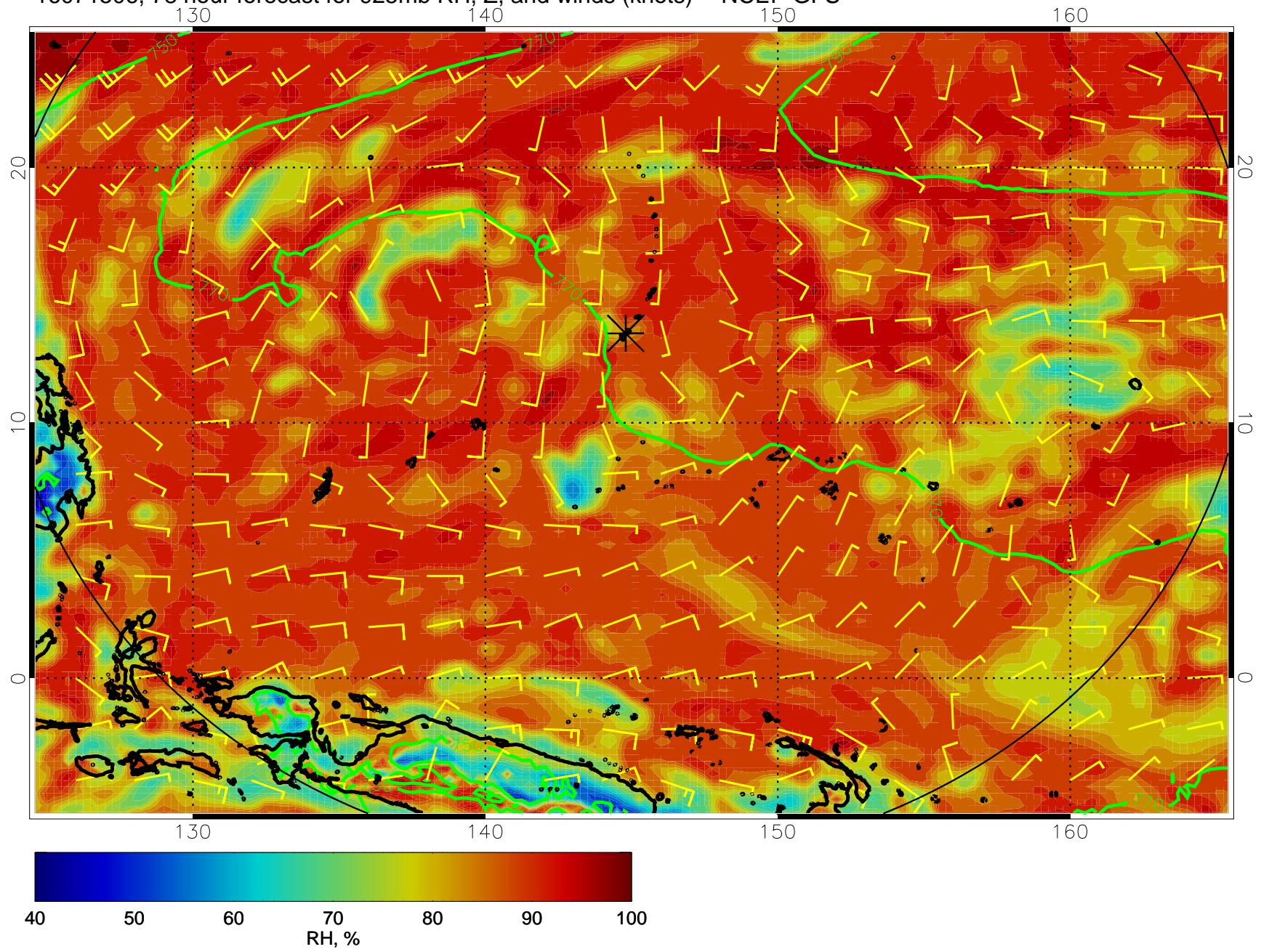


16071500, 72 hour forecast for 925mb RH, Z, and winds (knots) -- NCEP GFS

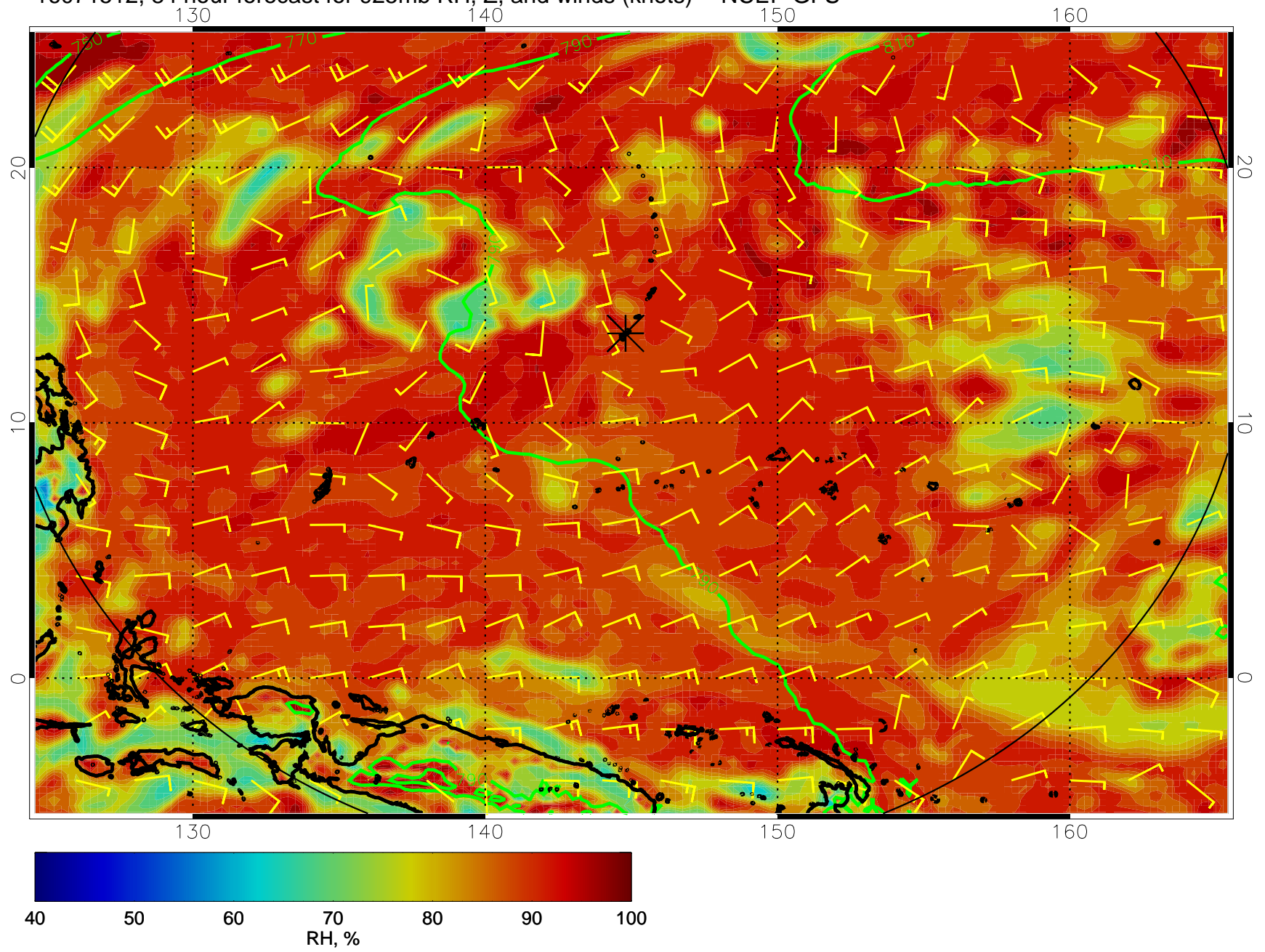




16071506, 78 hour forecast for 925mb RH, Z, and winds (knots) -- NCEP GFS

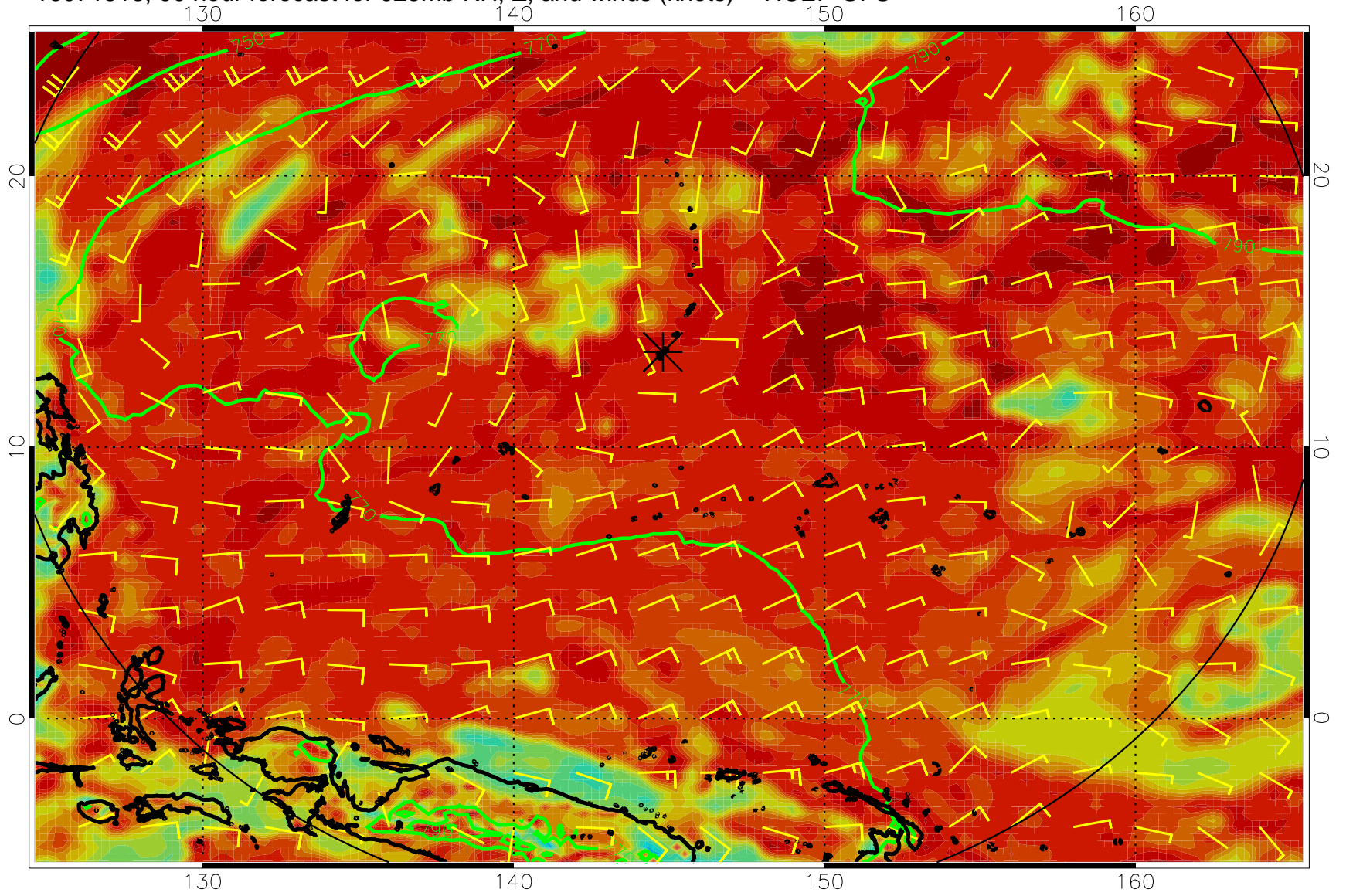


16071512, 84 hour forecast for 925mb RH, Z, and winds (knots) -- NCEP GFS

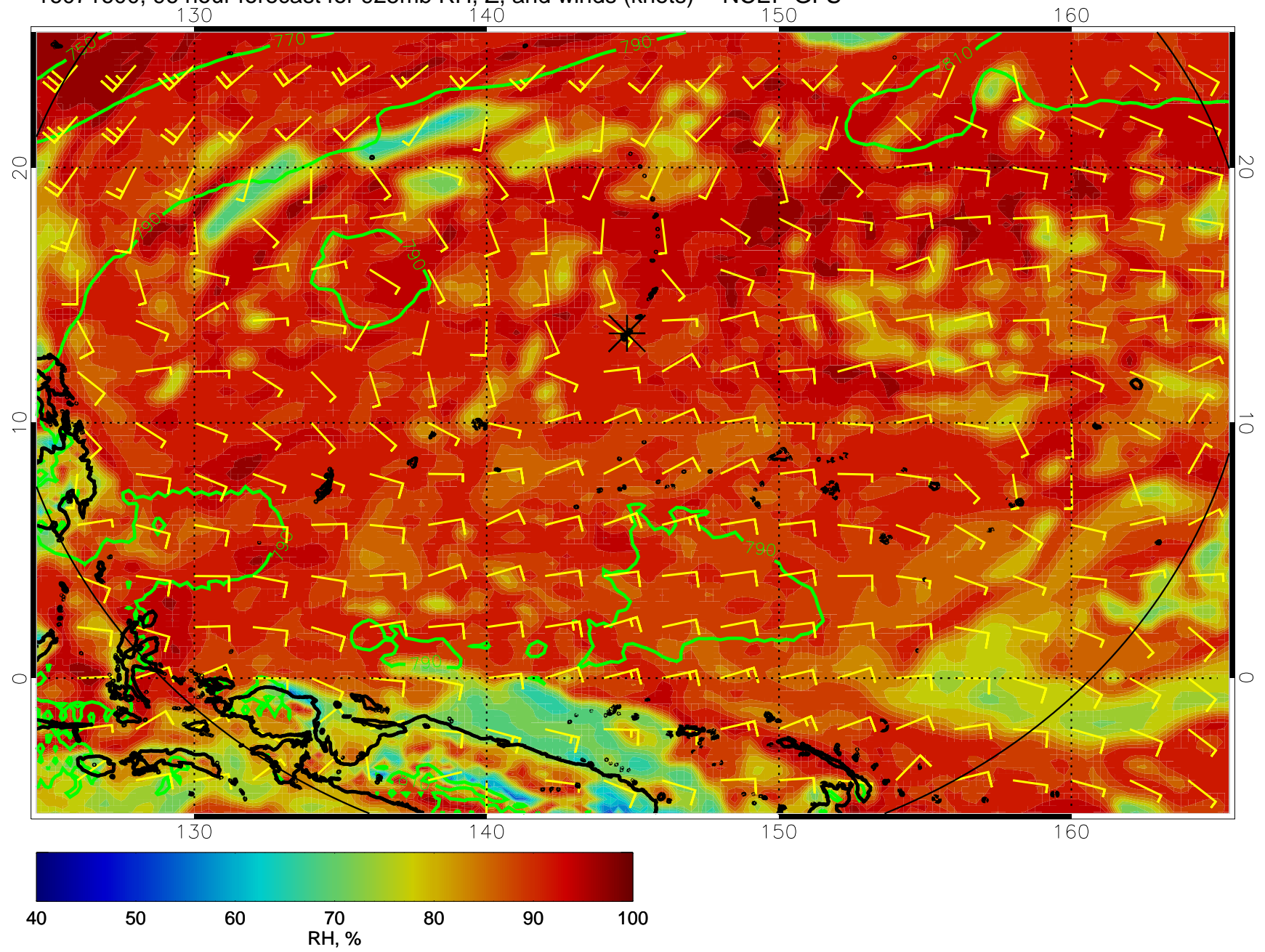




16071518, 90 hour forecast for 925mb RH, Z, and winds (knots) -- NCEP GFS

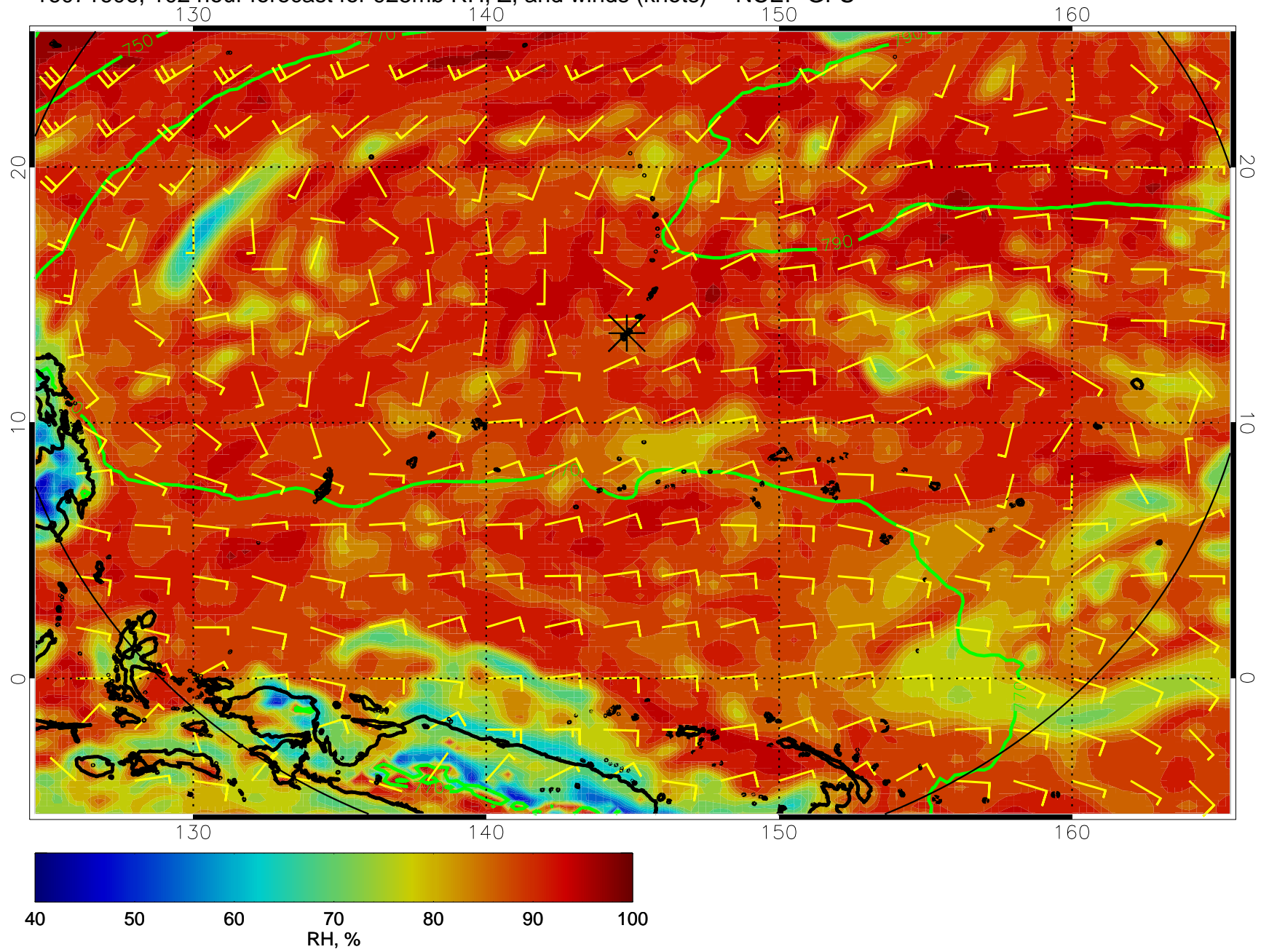


16071600, 96 hour forecast for 925mb RH, Z, and winds (knots) -- NCEP GFS

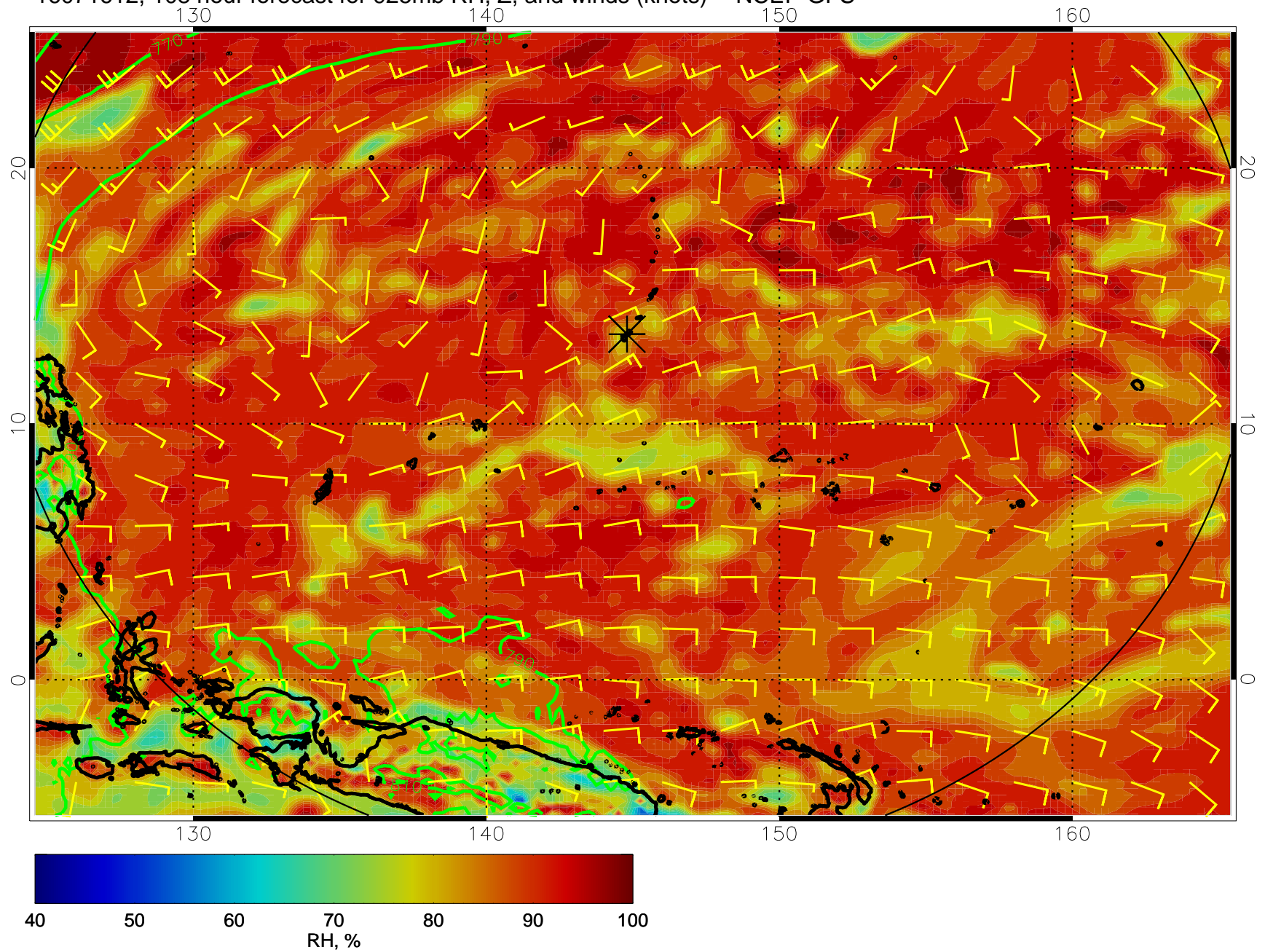




16071606, 102 hour forecast for 925mb RH, Z, and winds (knots) -- NCEP GFS

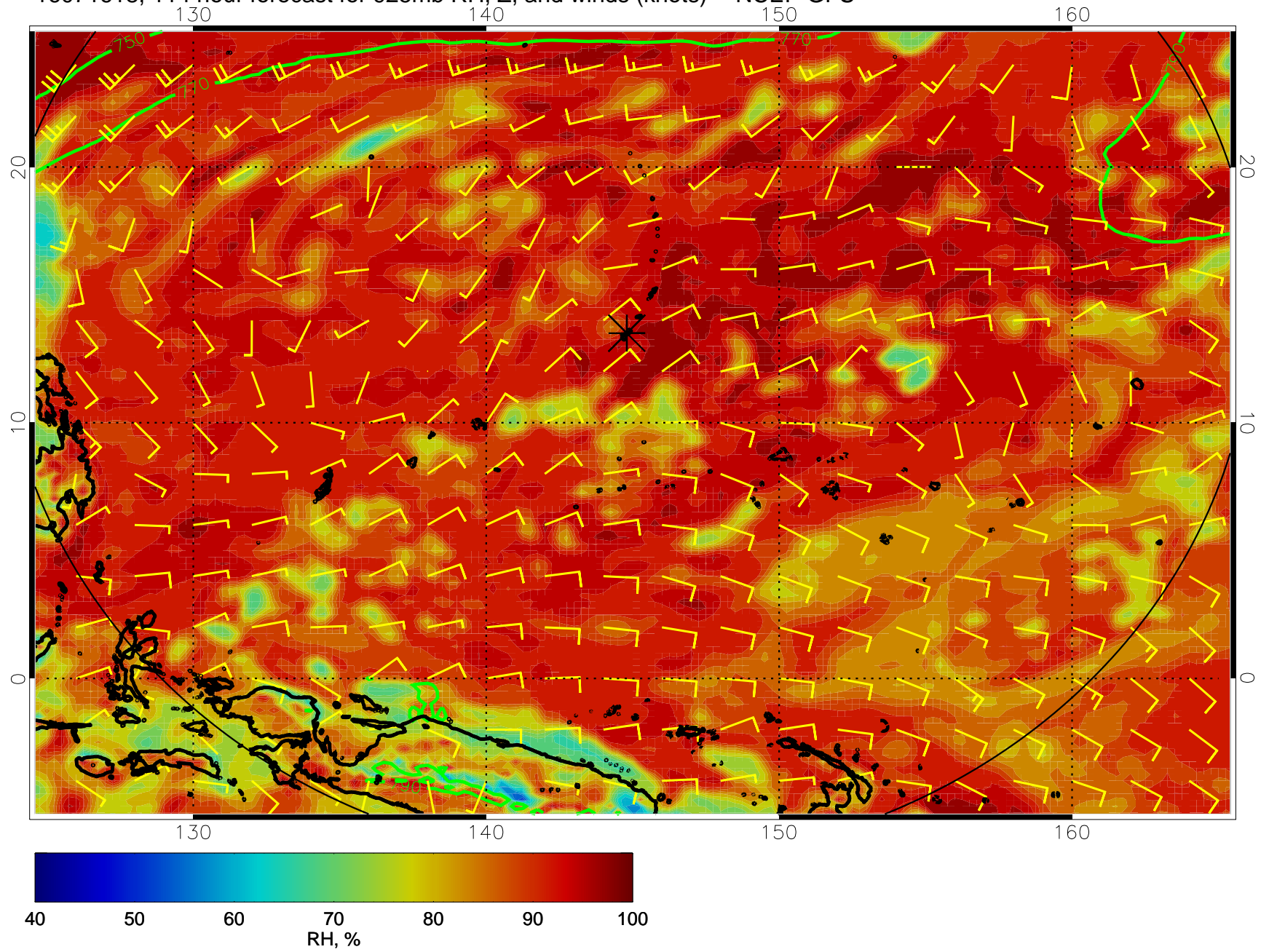


16071612, 108 hour forecast for 925mb RH, Z, and winds (knots) -- NCEP GFS





16071618, 114 hour forecast for 925mb RH, Z, and winds (knots) -- NCEP GFS



16071700, 120 hour forecast for 925mb RH, Z, and winds (knots) -- NCEP GFS

