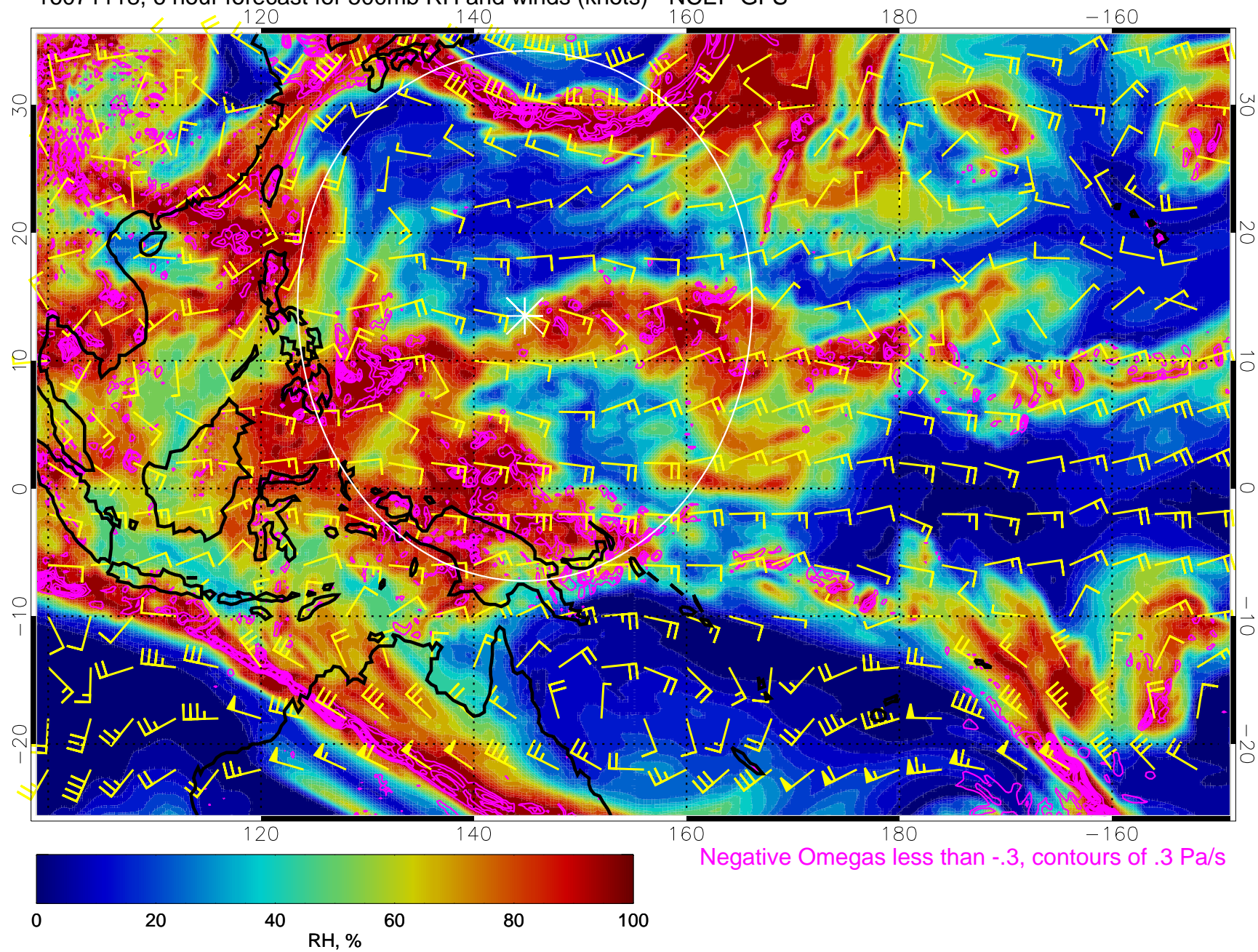


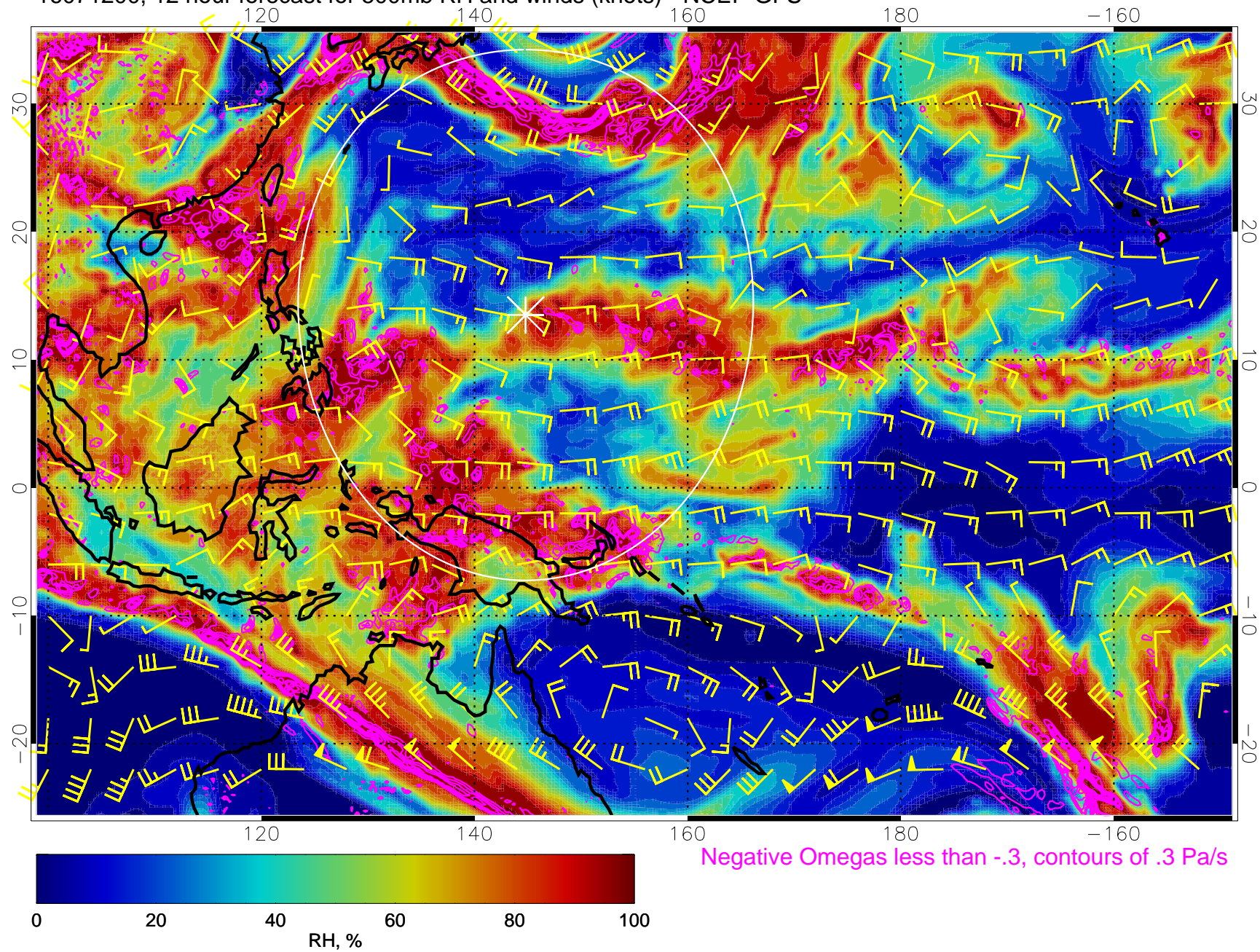
16071118, 6 hour forecast for 500mb RH and winds (knots) - NCEP GFS



Range ring of 2304 km



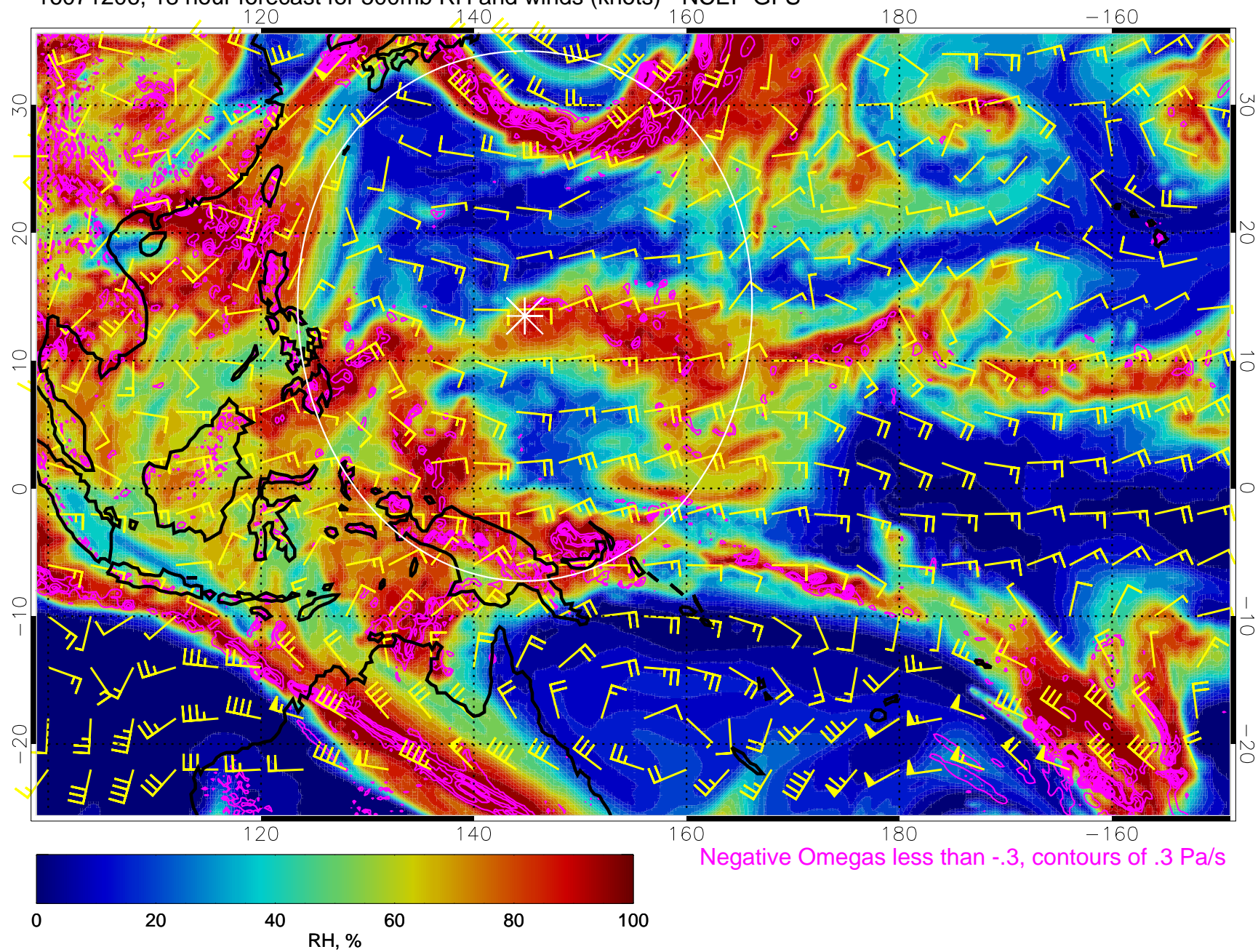
16071200, 12 hour forecast for 500mb RH and winds (knots) - NCEP GFS



Range ring of 2304 km



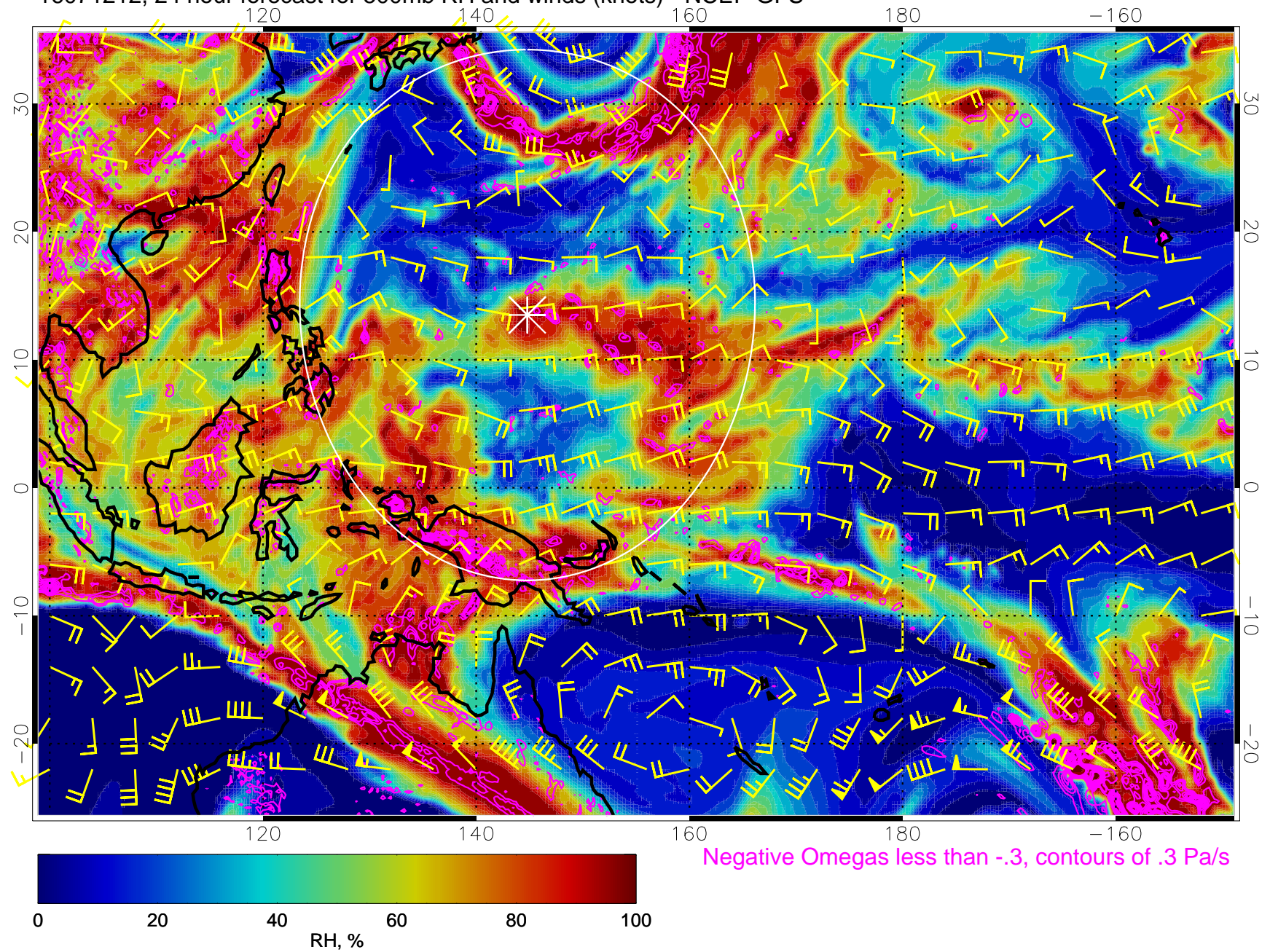
16071206, 18 hour forecast for 500mb RH and winds (knots) - NCEP GFS



Range ring of 2304 km



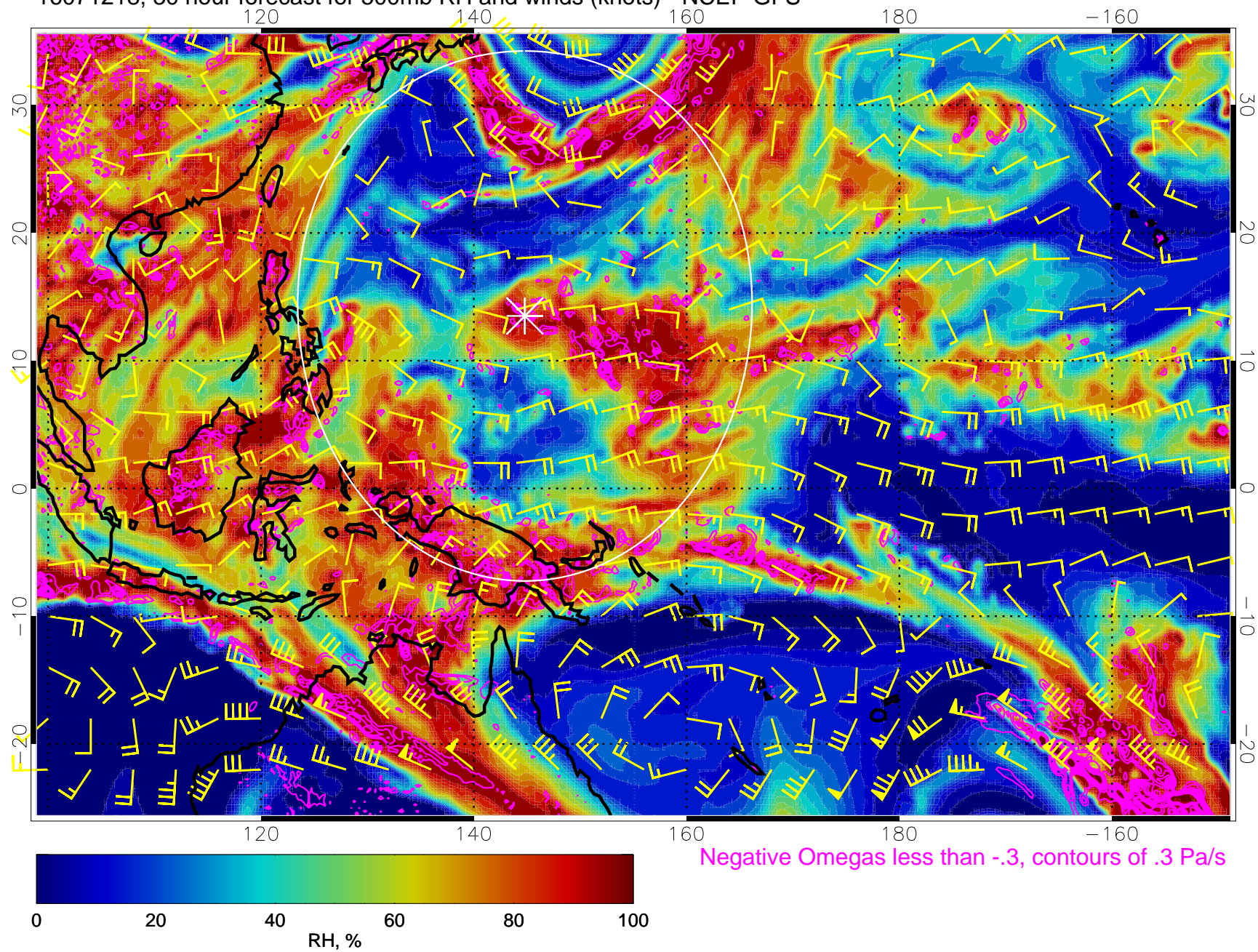
16071212, 24 hour forecast for 500mb RH and winds (knots) - NCEP GFS



Range ring of 2304 km



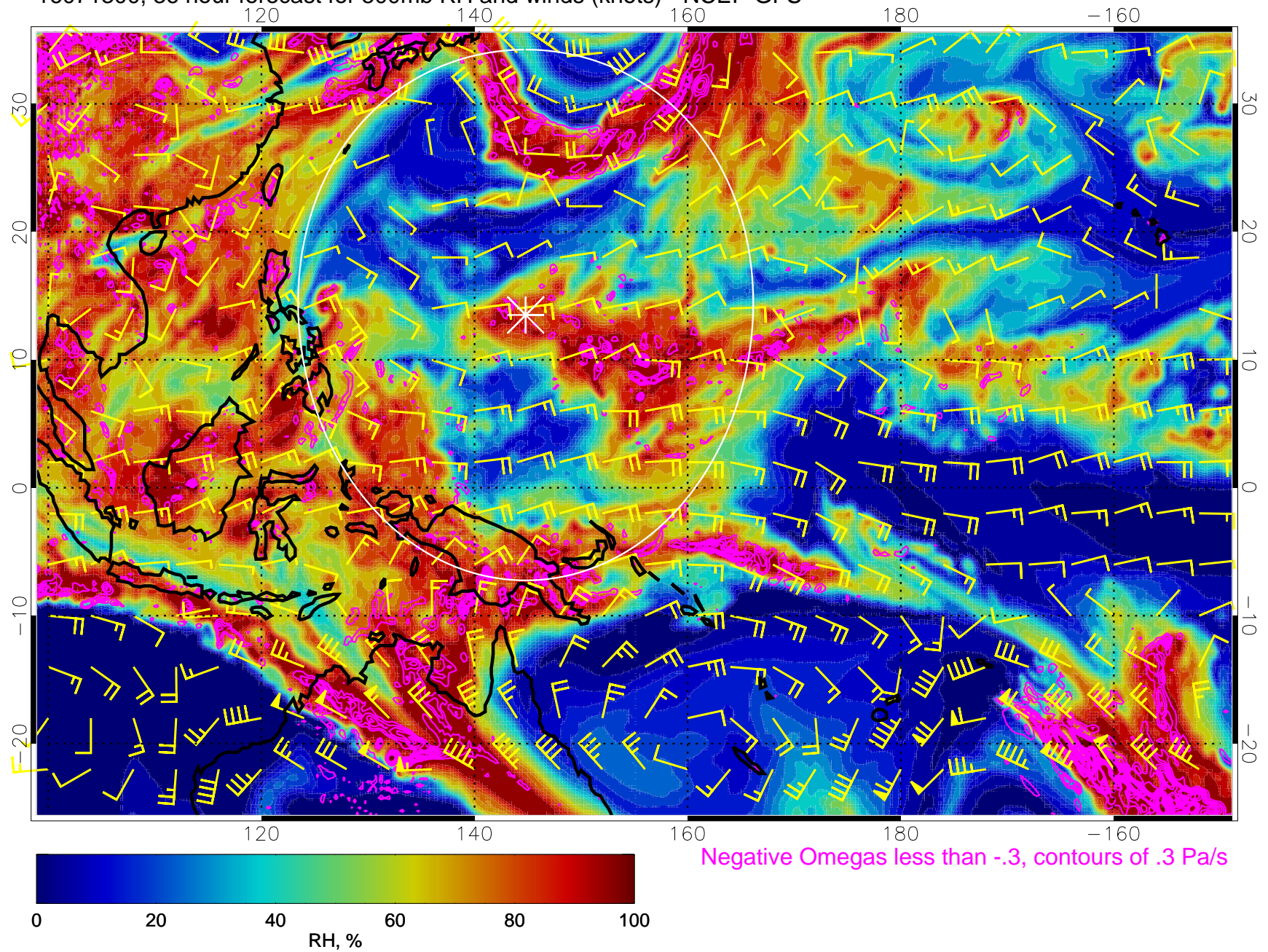
16071218, 30 hour forecast for 500mb RH and winds (knots) - NCEP GFS



Range ring of 2304 km



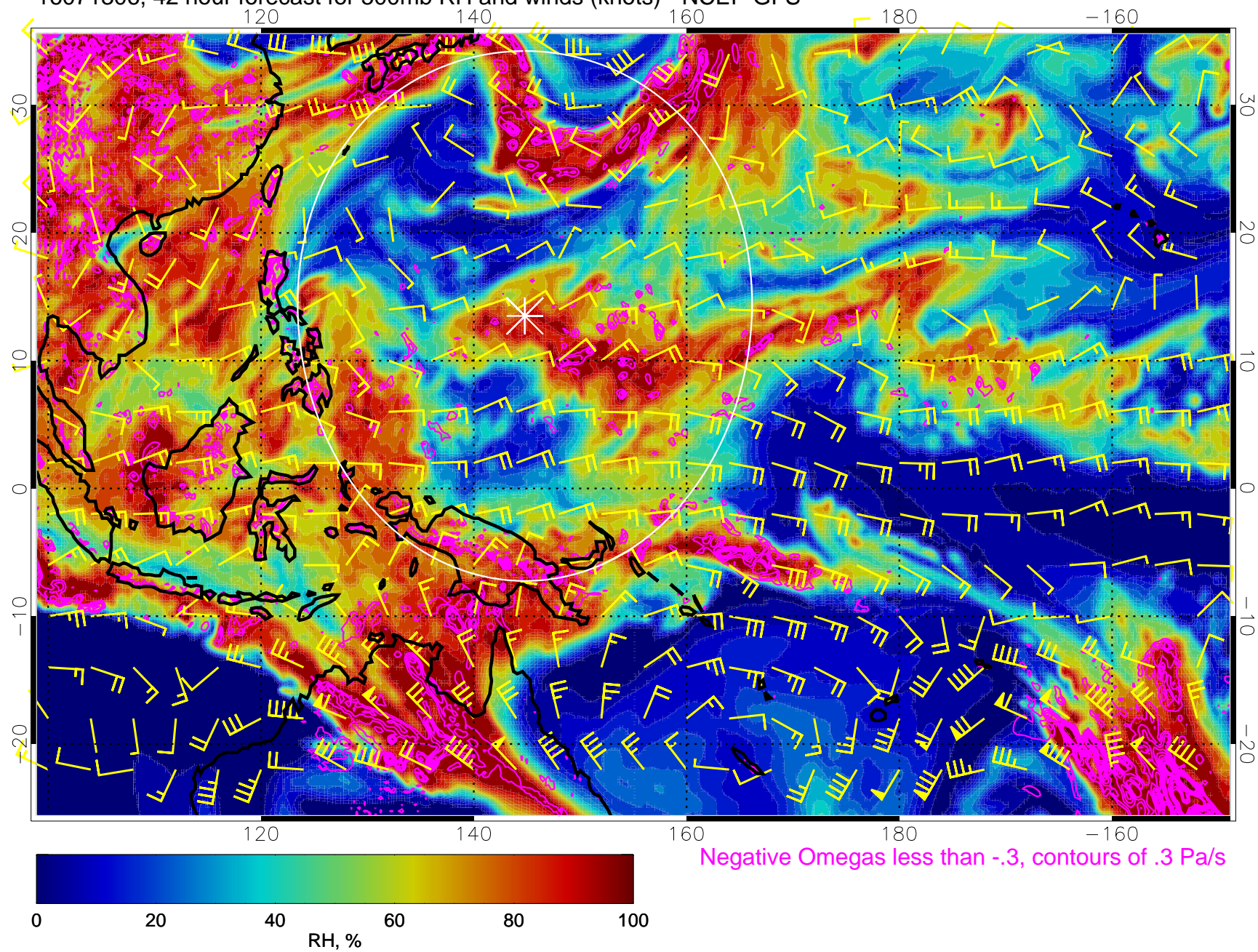
16071300, 36 hour forecast for 500mb RH and winds (knots) - NCEP GFS



Range ring of 2304 km



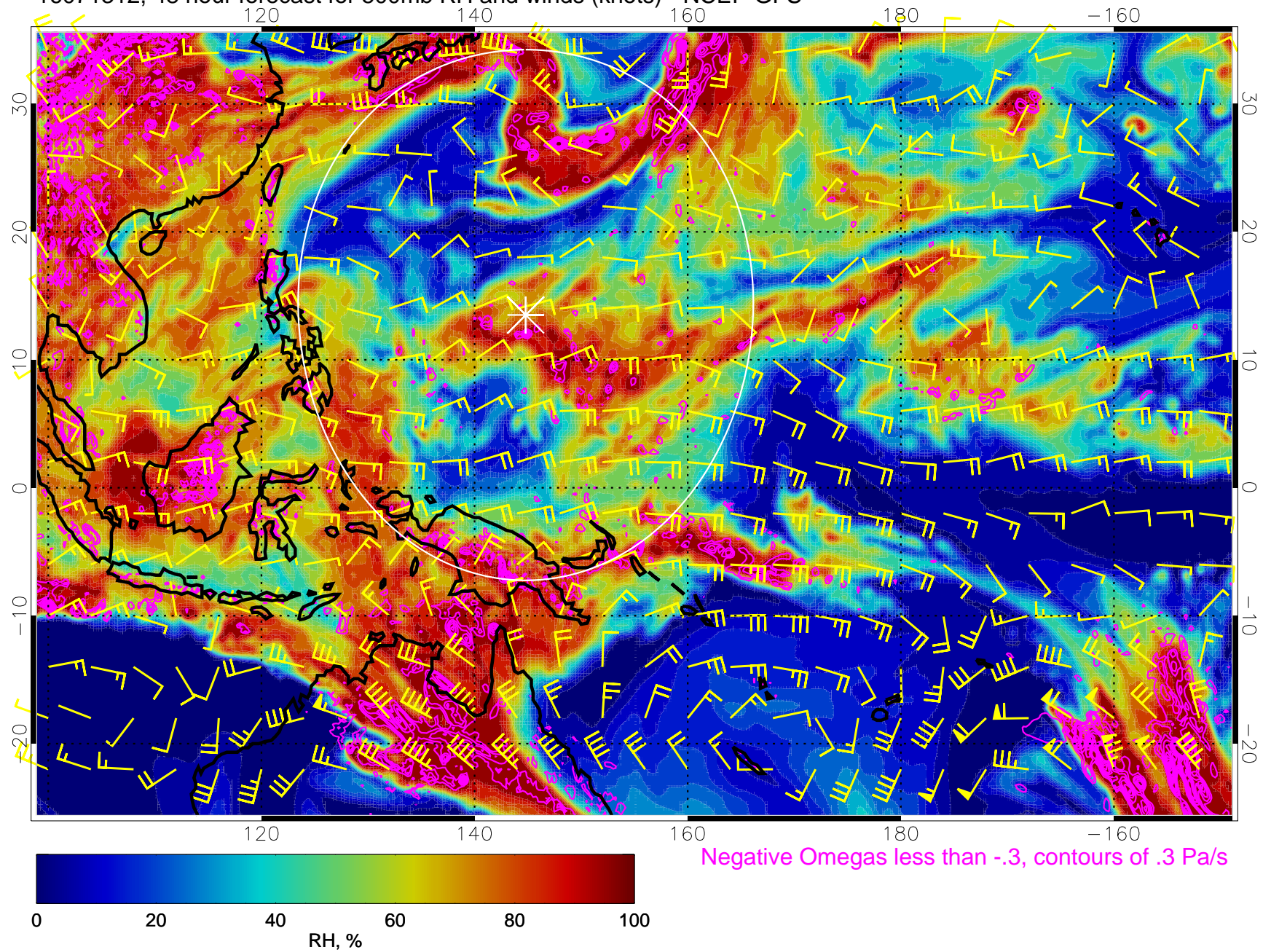
16071306, 42 hour forecast for 500mb RH and winds (knots) - NCEP GFS



Range ring of 2304 km



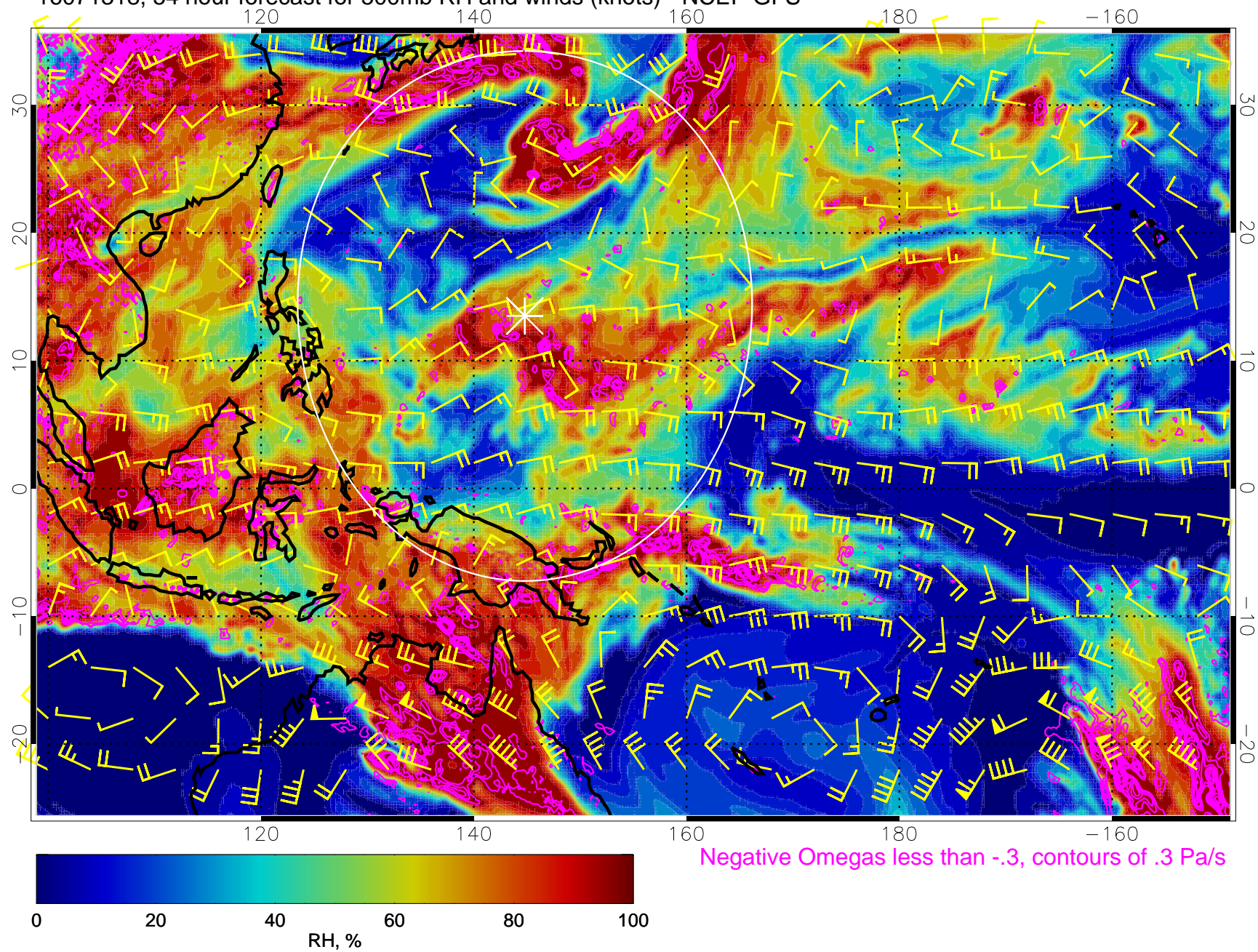
16071312, 48 hour forecast for 500mb RH and winds (knots) - NCEP GFS



Range ring of 2304 km



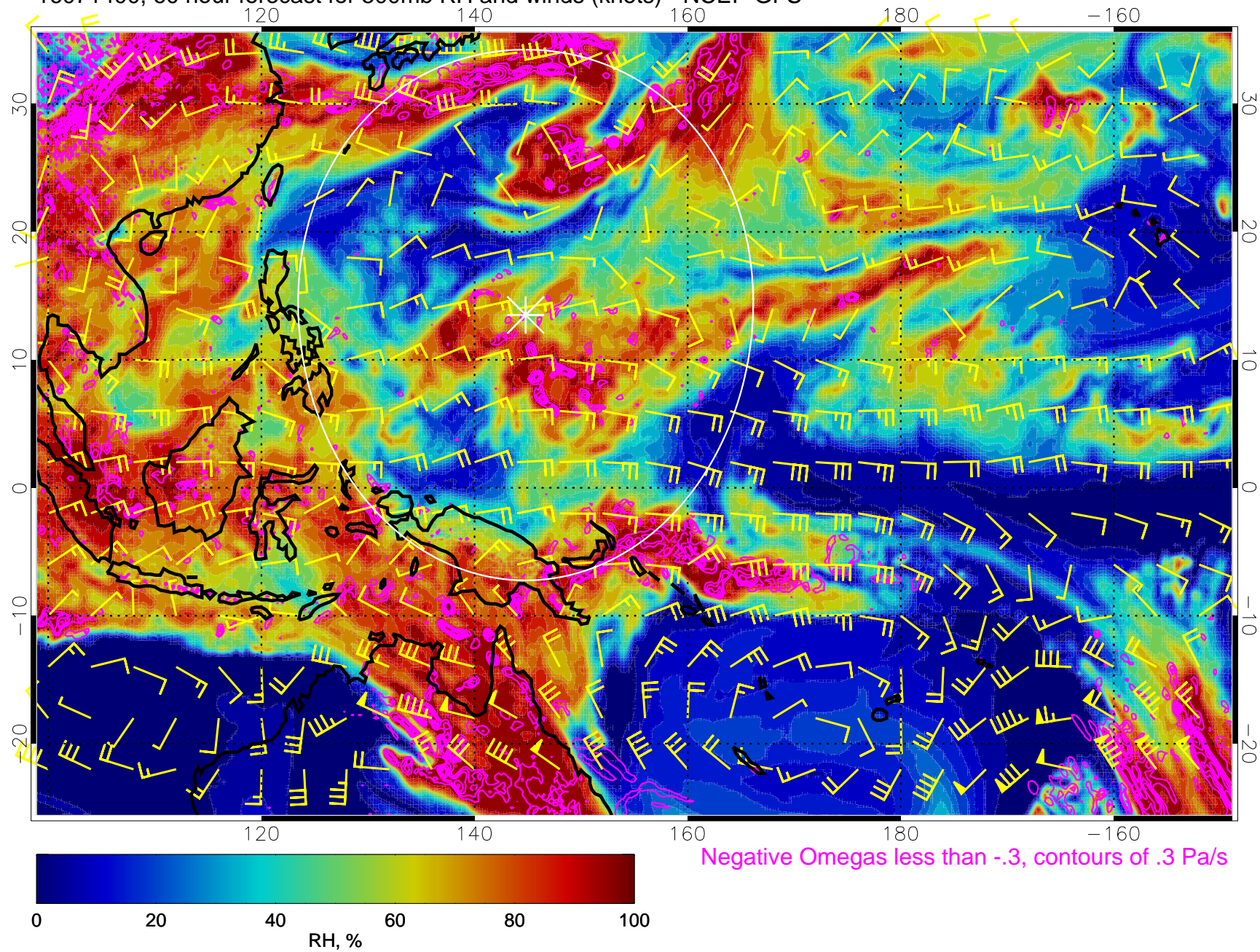
16071318, 54 hour forecast for 500mb RH and winds (knots) - NCEP GFS



Range ring of 2304 km



16071400, 60 hour forecast for 500mb RH and winds (knots) - NCEP GFS

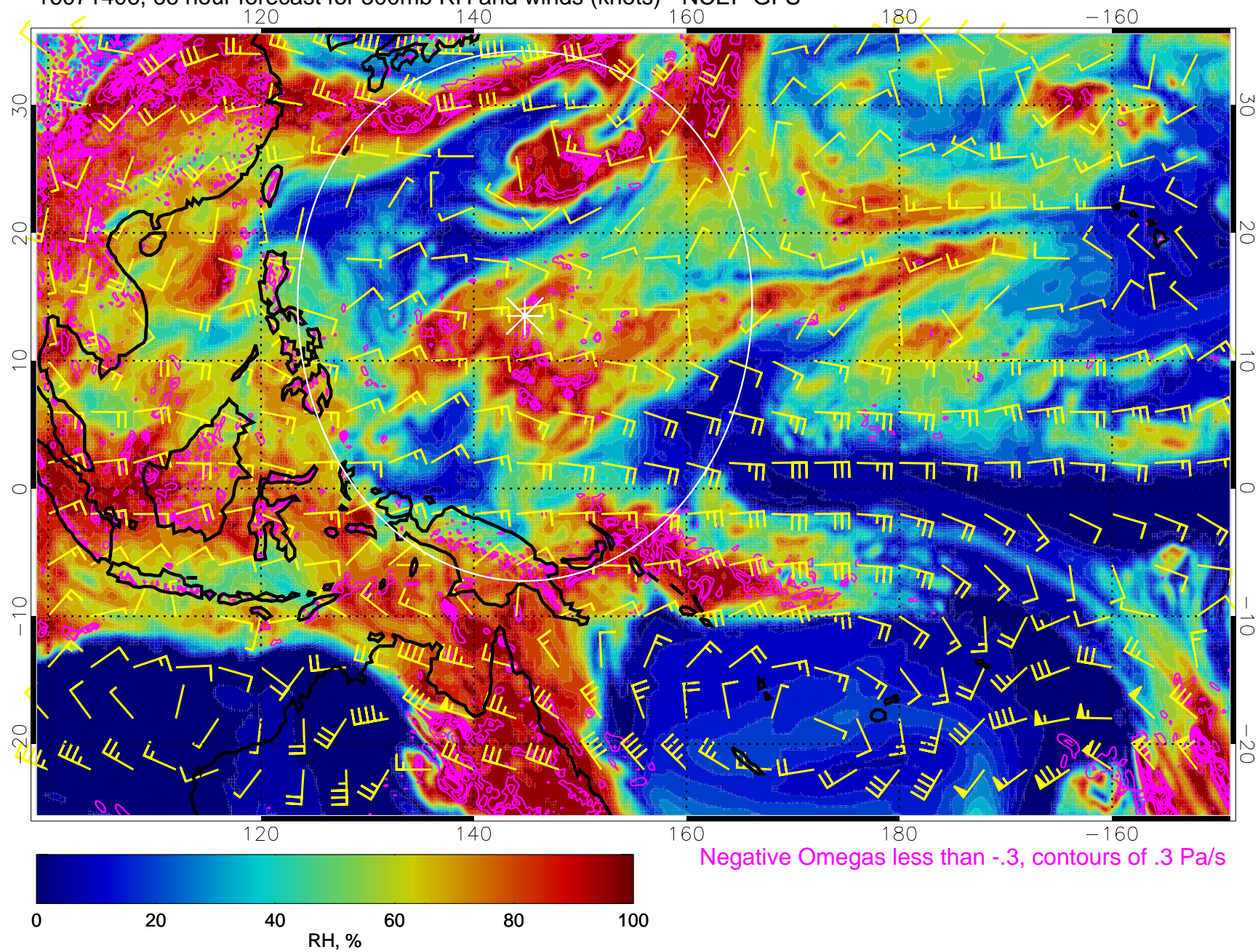


Negative Omegas less than -.3, contours of .3 Pa/s

Range ring of 2304 km



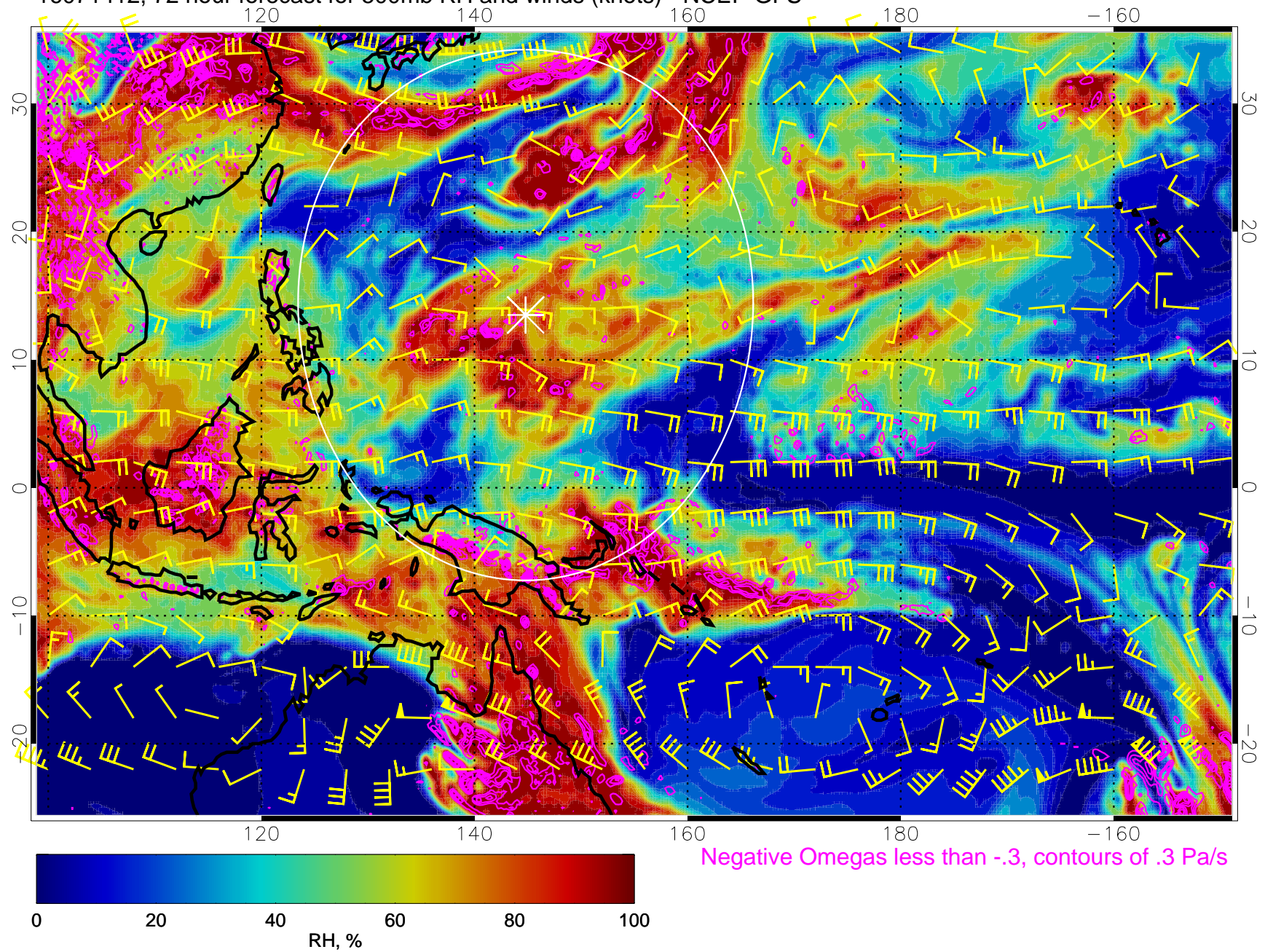
16071406, 66 hour forecast for 500mb RH and winds (knots) - NCEP GFS



Range ring of 2304 km



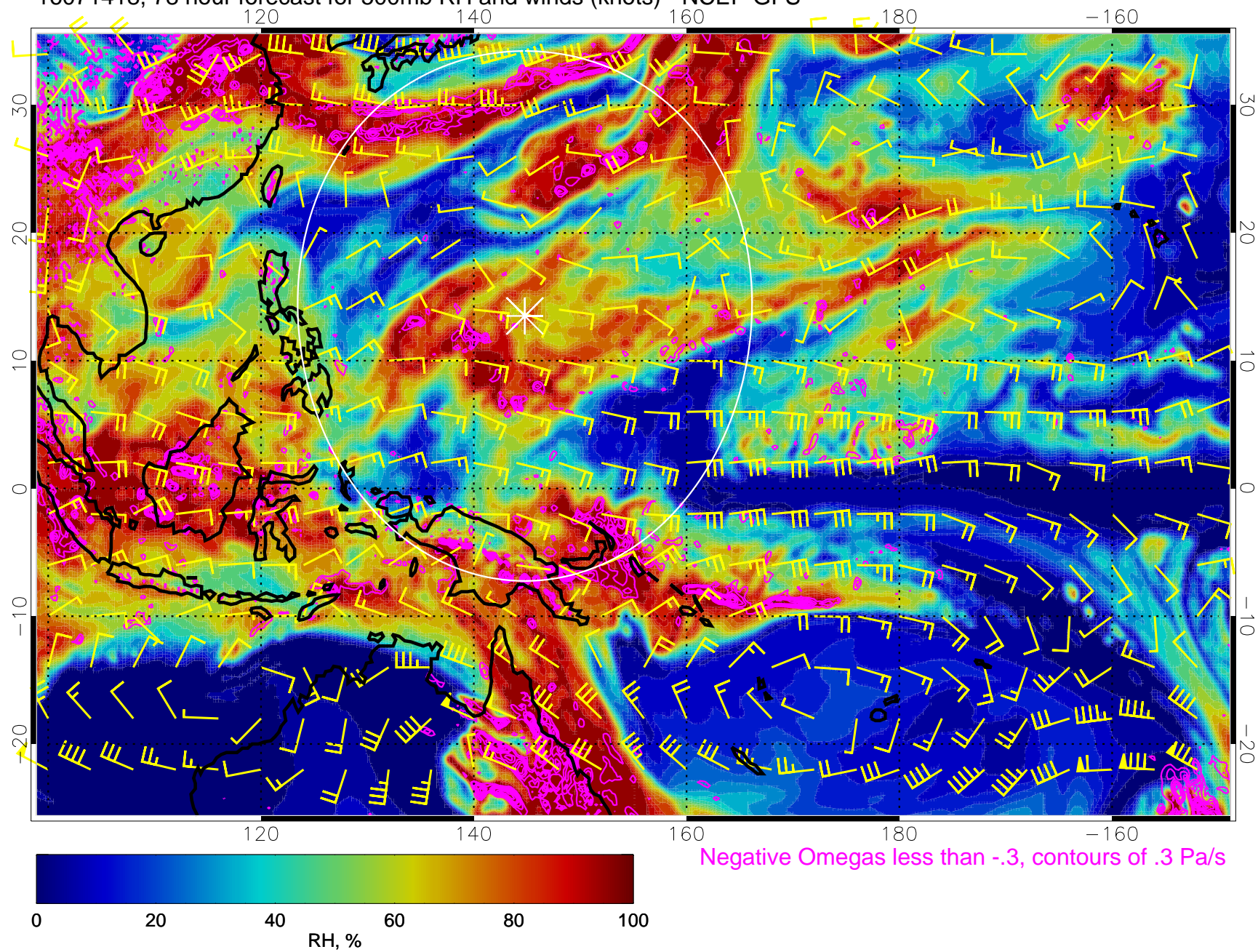
16071412, 72 hour forecast for 500mb RH and winds (knots) - NCEP GFS



Range ring of 2304 km



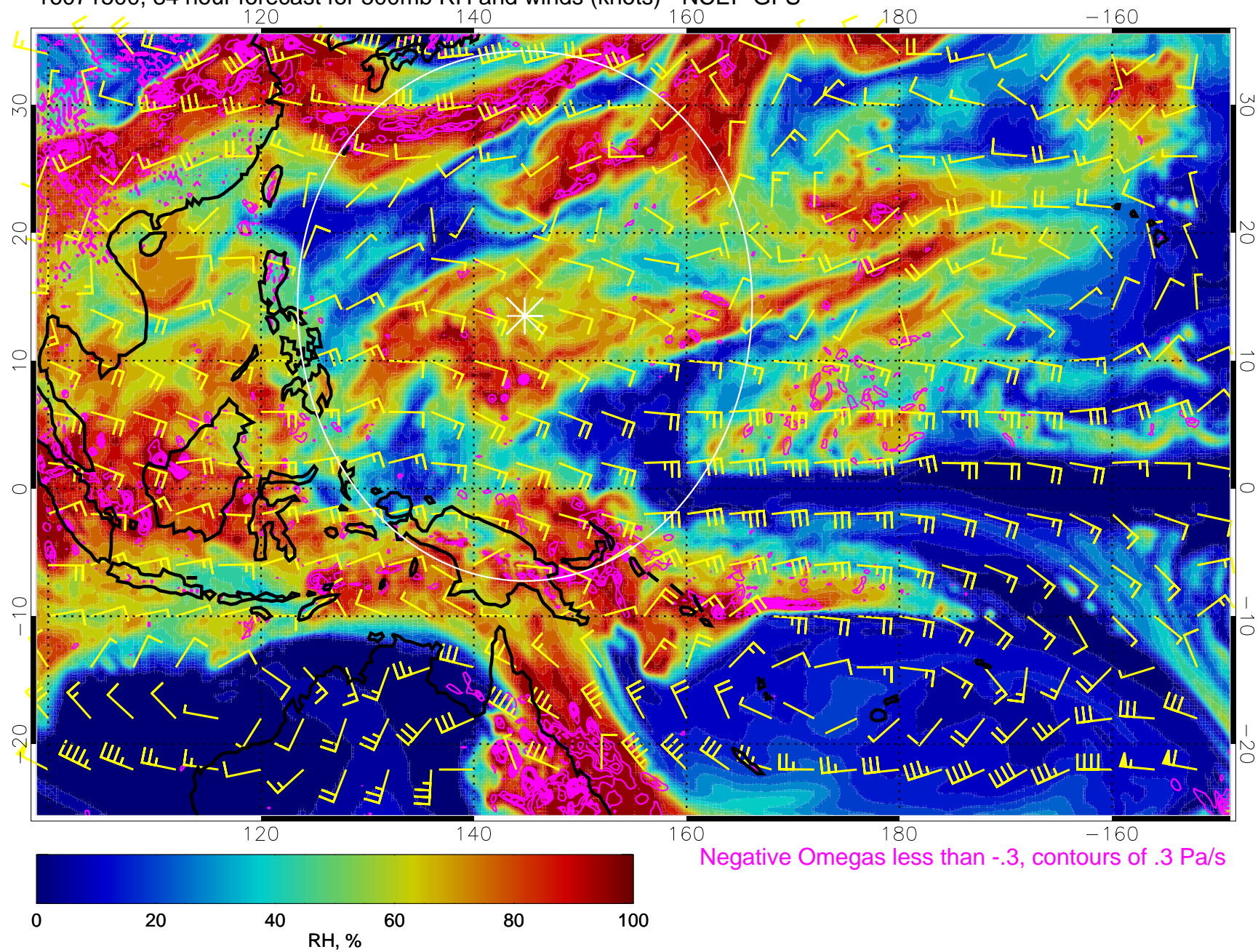
16071418, 78 hour forecast for 500mb RH and winds (knots) - NCEP GFS



Range ring of 2304 km



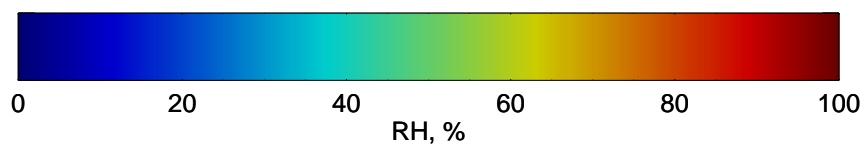
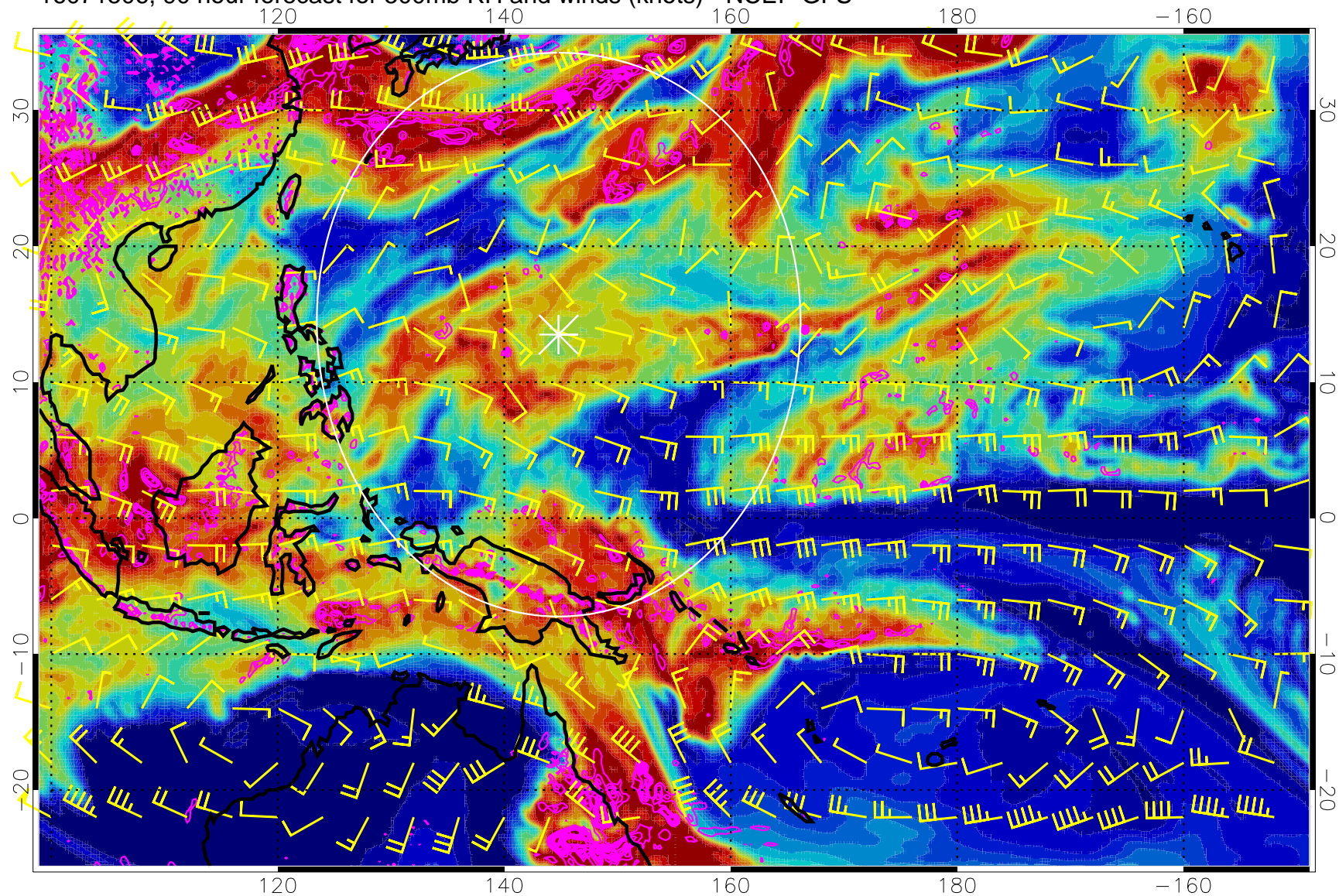
16071500, 84 hour forecast for 500mb RH and winds (knots) - NCEP GFS



Range ring of 2304 km



16071506, 90 hour forecast for 500mb RH and winds (knots) - NCEP GFS

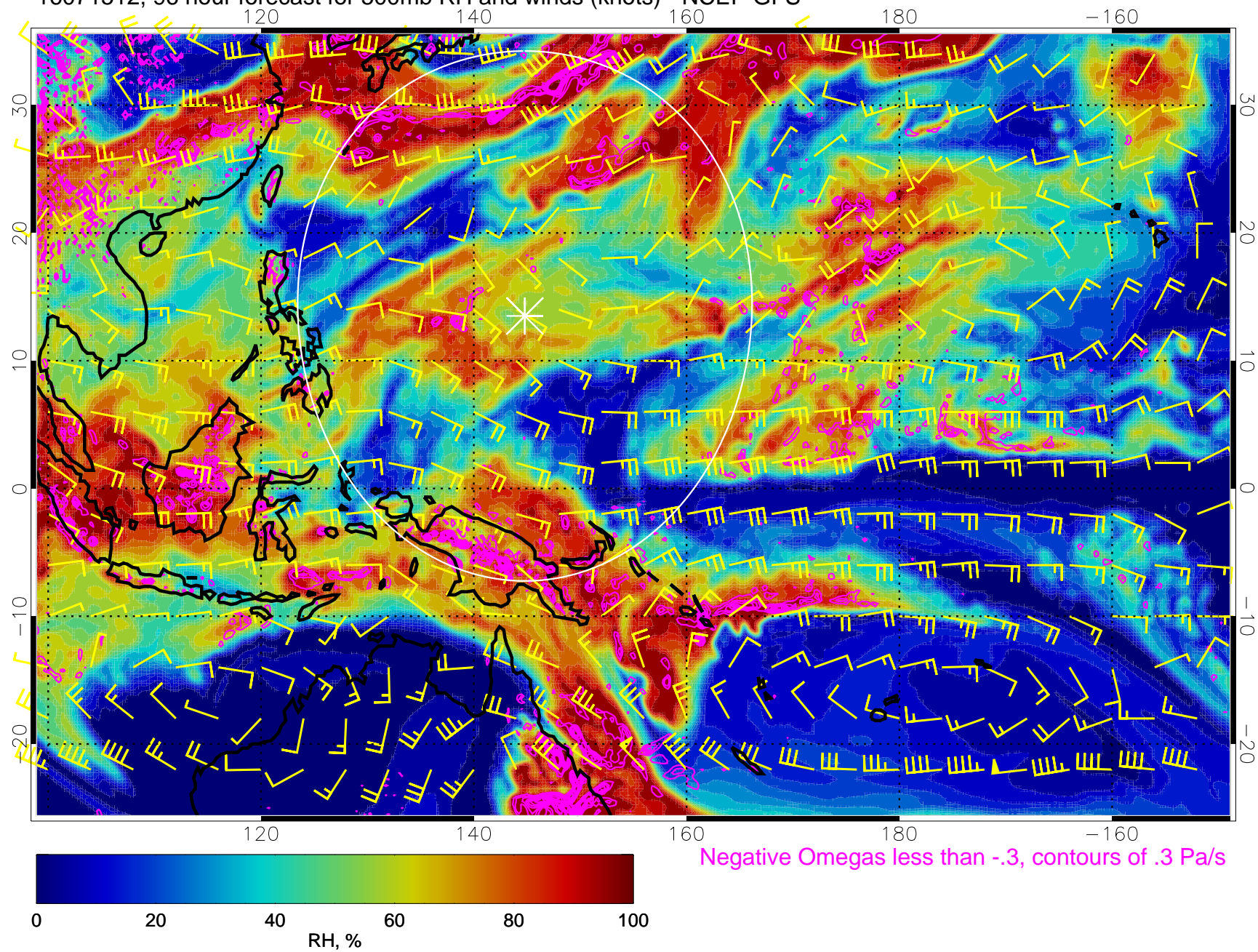


Negative Omegas less than  $-0.3$ , contours of  $0.3$  Pa/s

Range ring of 2304 km



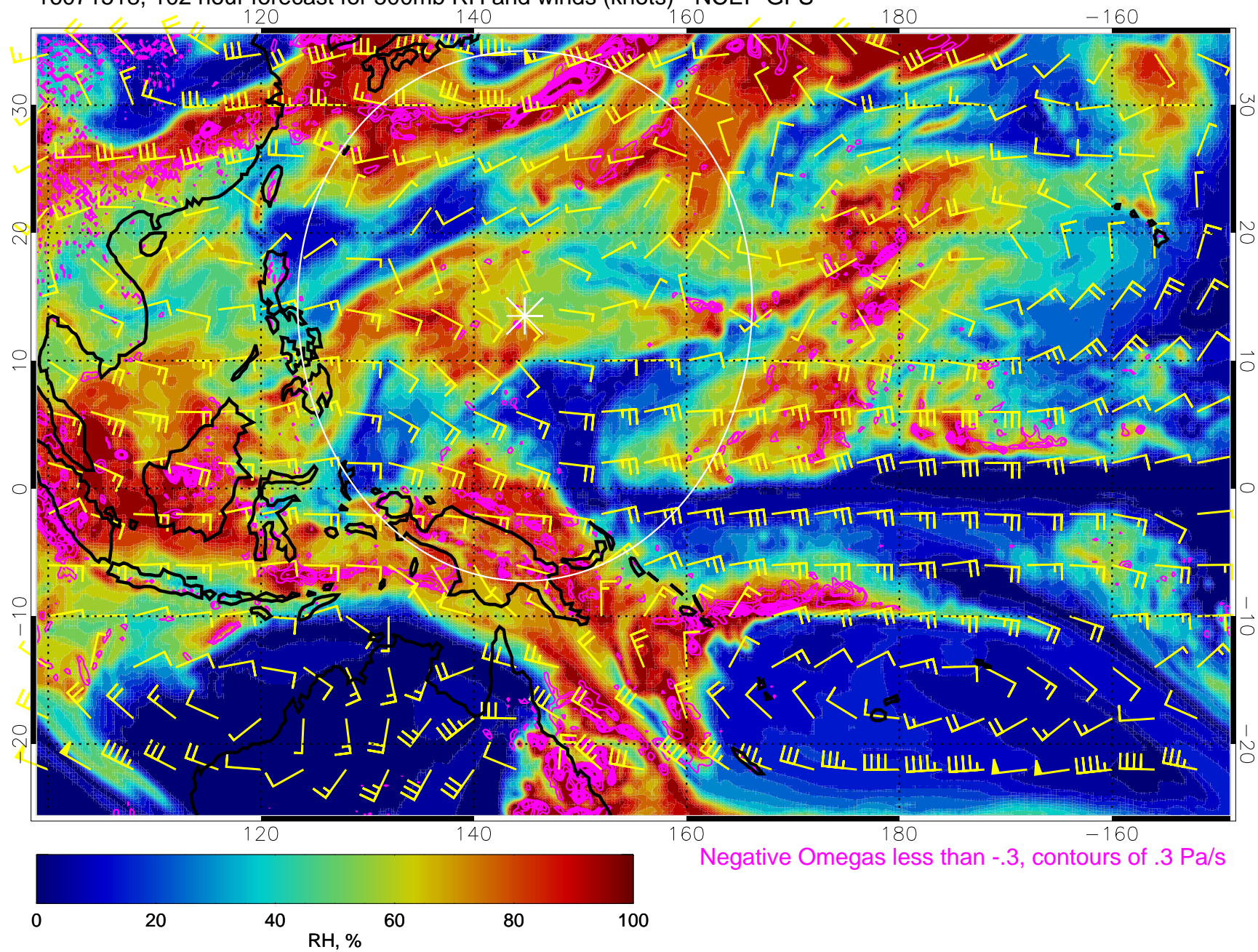
16071512, 96 hour forecast for 500mb RH and winds (knots) - NCEP GFS



Range ring of 2304 km



16071518, 102 hour forecast for 500mb RH and winds (knots) - NCEP GFS

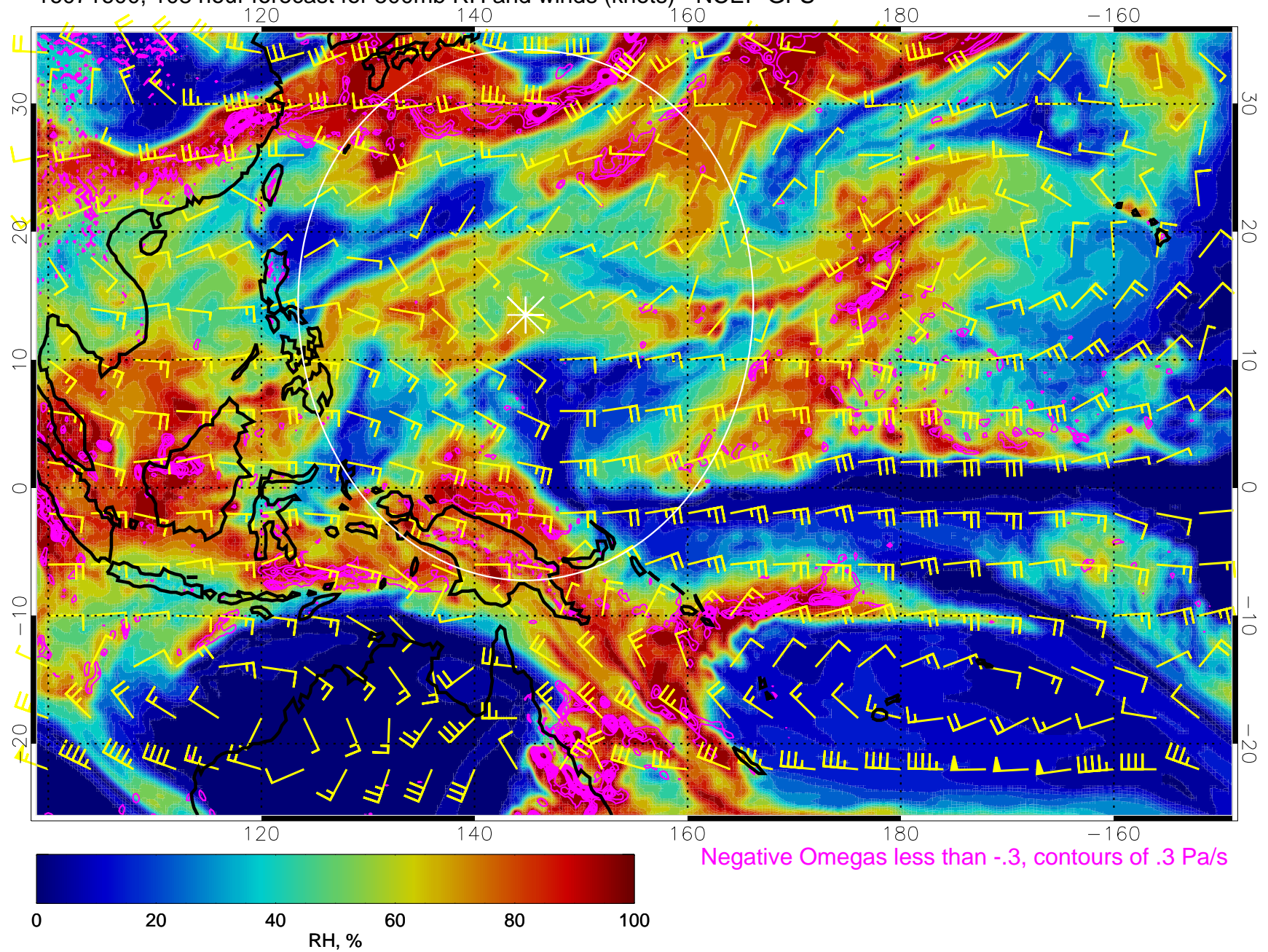


Negative Omegas less than -.3, contours of .3 Pa/s

Range ring of 2304 km



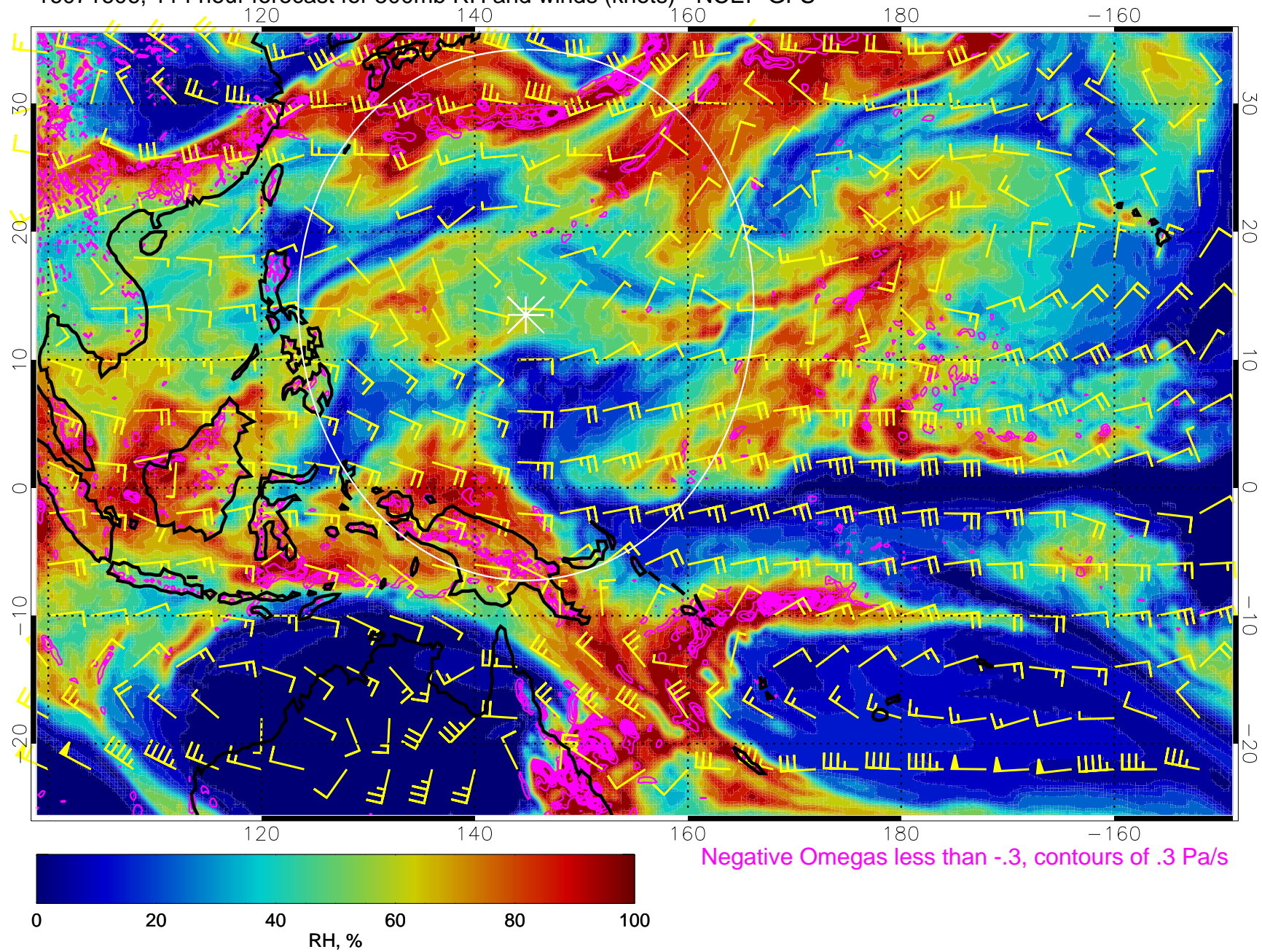
16071600, 108 hour forecast for 500mb RH and winds (knots) - NCEP GFS



Range ring of 2304 km



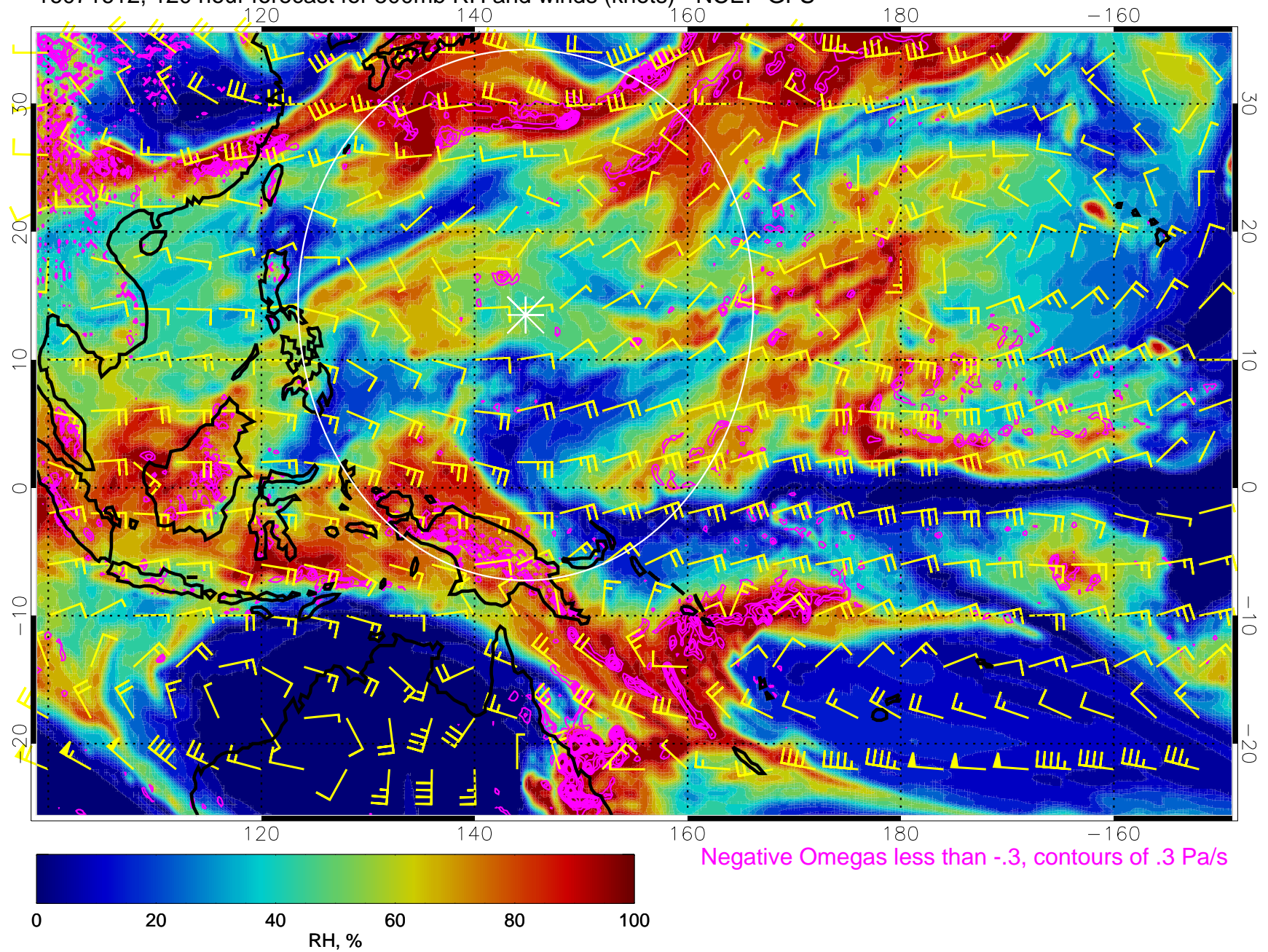
16071606, 114 hour forecast for 500mb RH and winds (knots) - NCEP GFS



Range ring of 2304 km



16071612, 120 hour forecast for 500mb RH and winds (knots) - NCEP GFS



Range ring of 2304 km