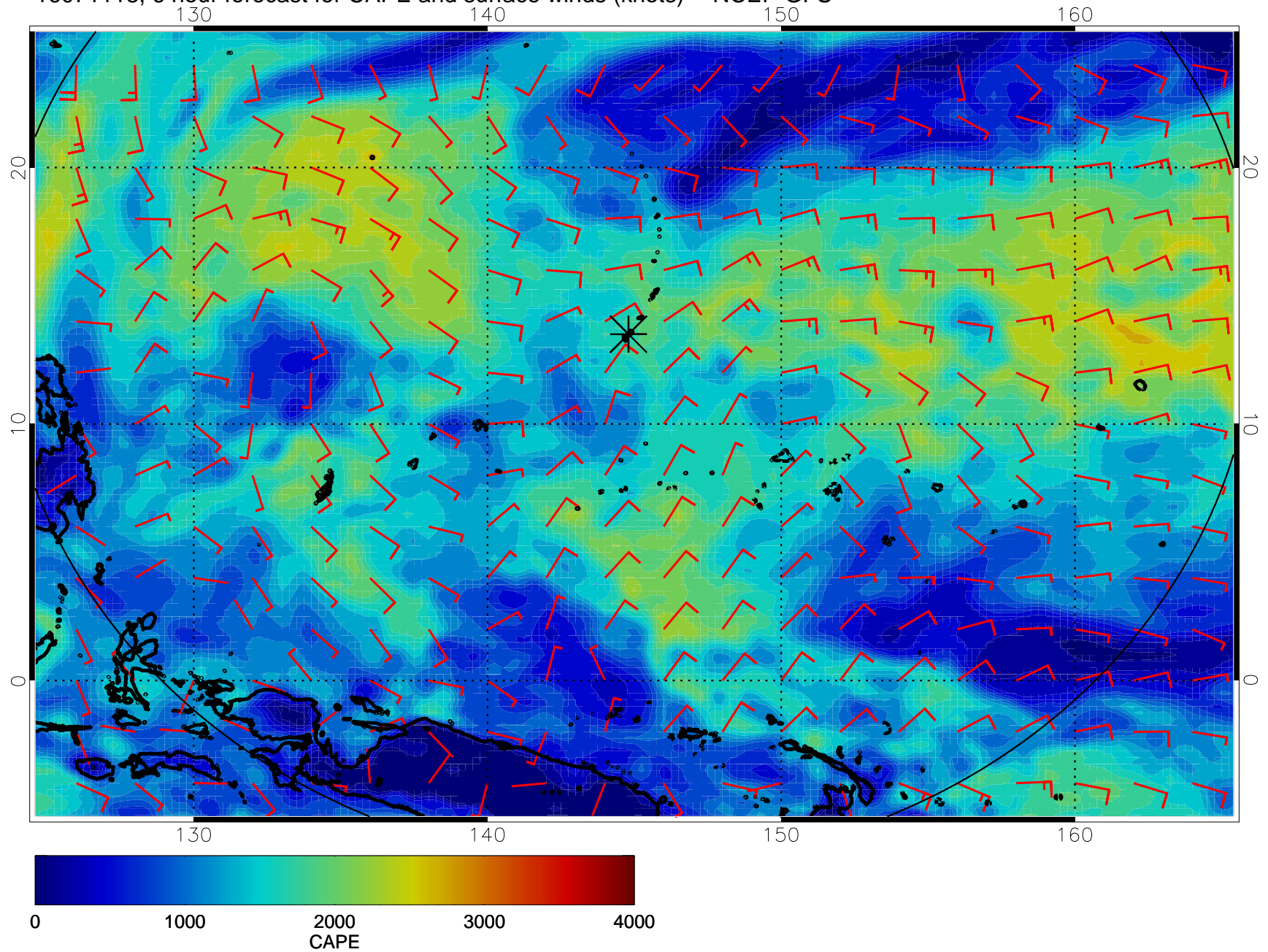
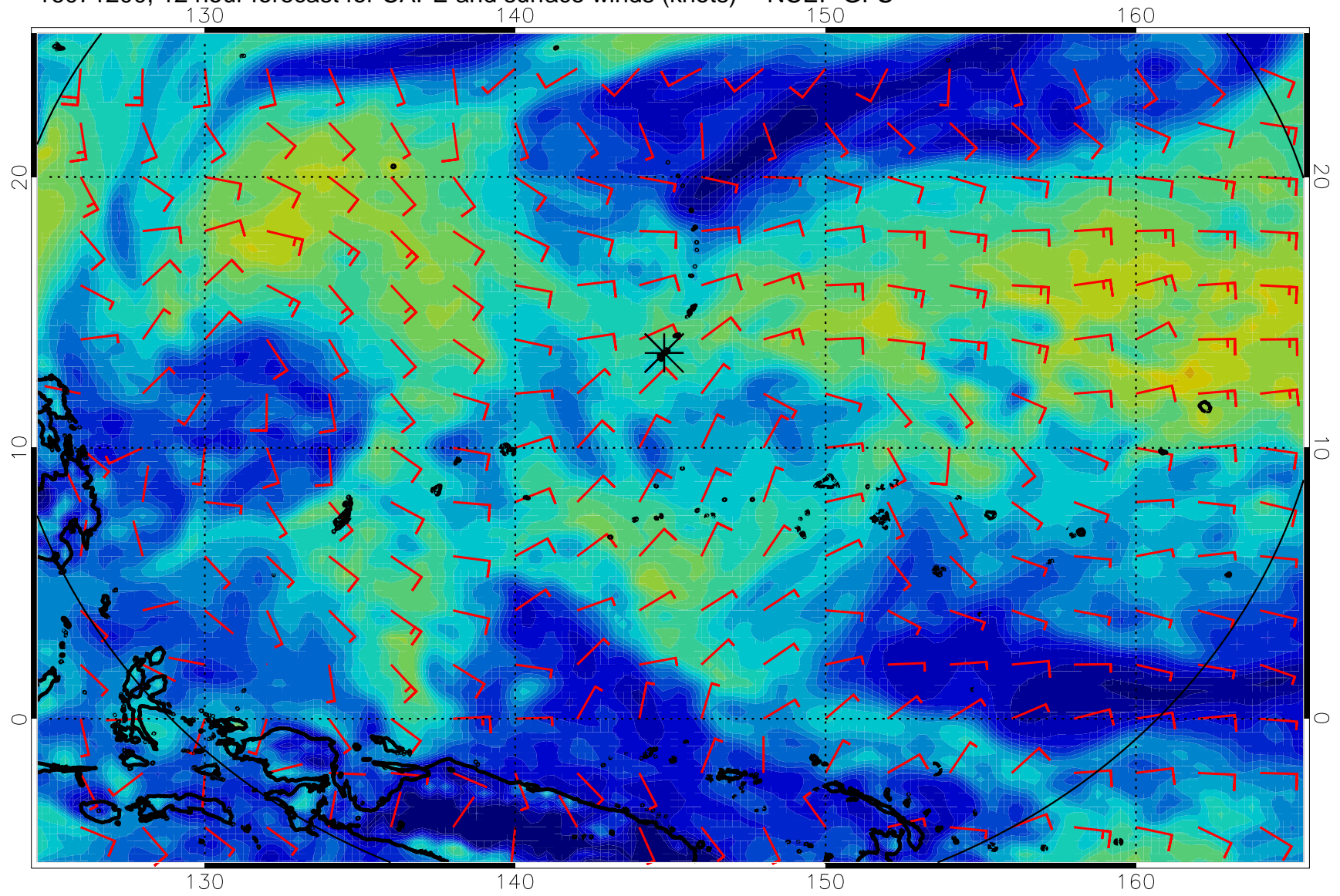


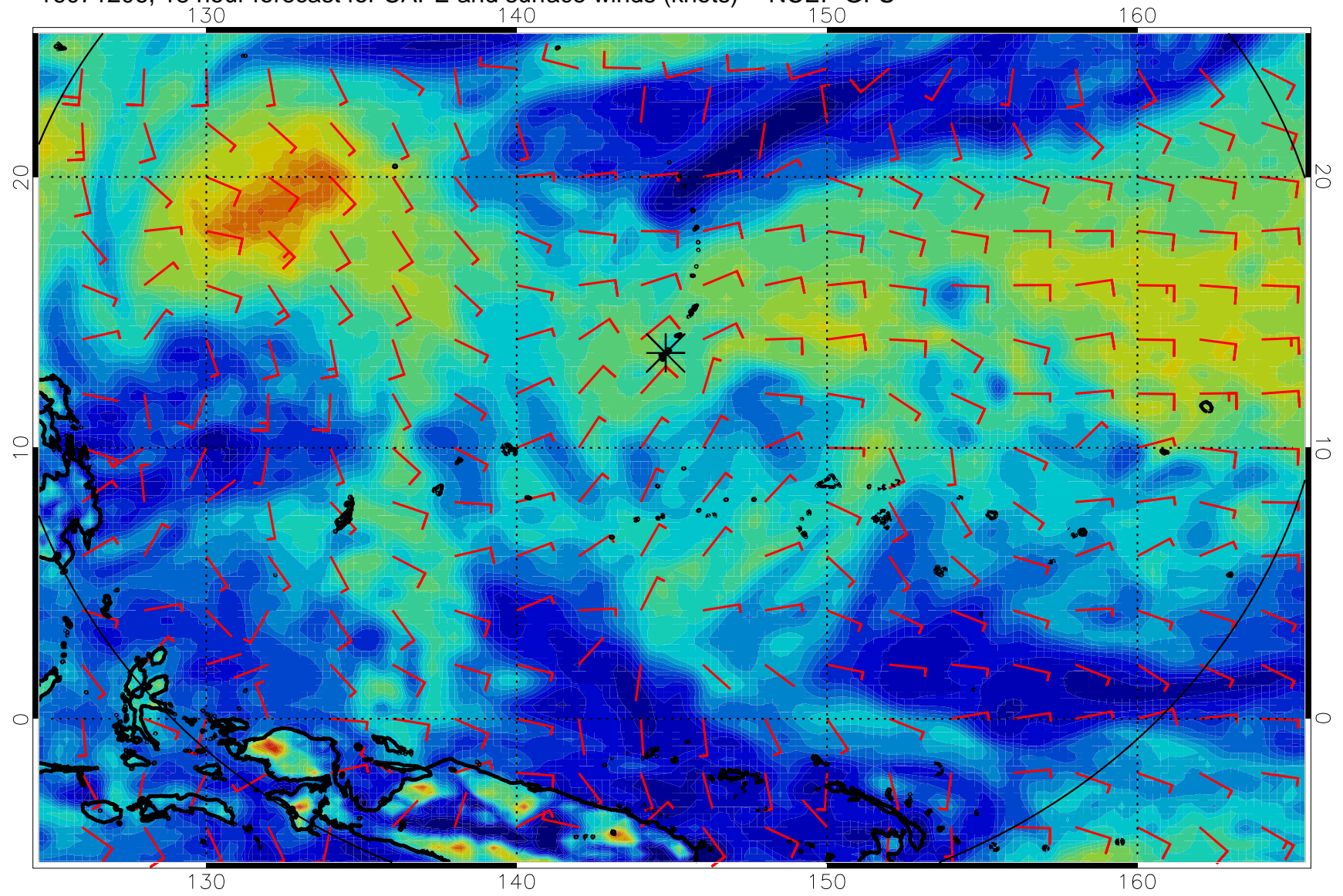
16071118, 6 hour forecast for CAPE and surface winds (knots) -- NCEP GFS



16071200, 12 hour forecast for CAPE and surface winds (knots) -- NCEP GFS

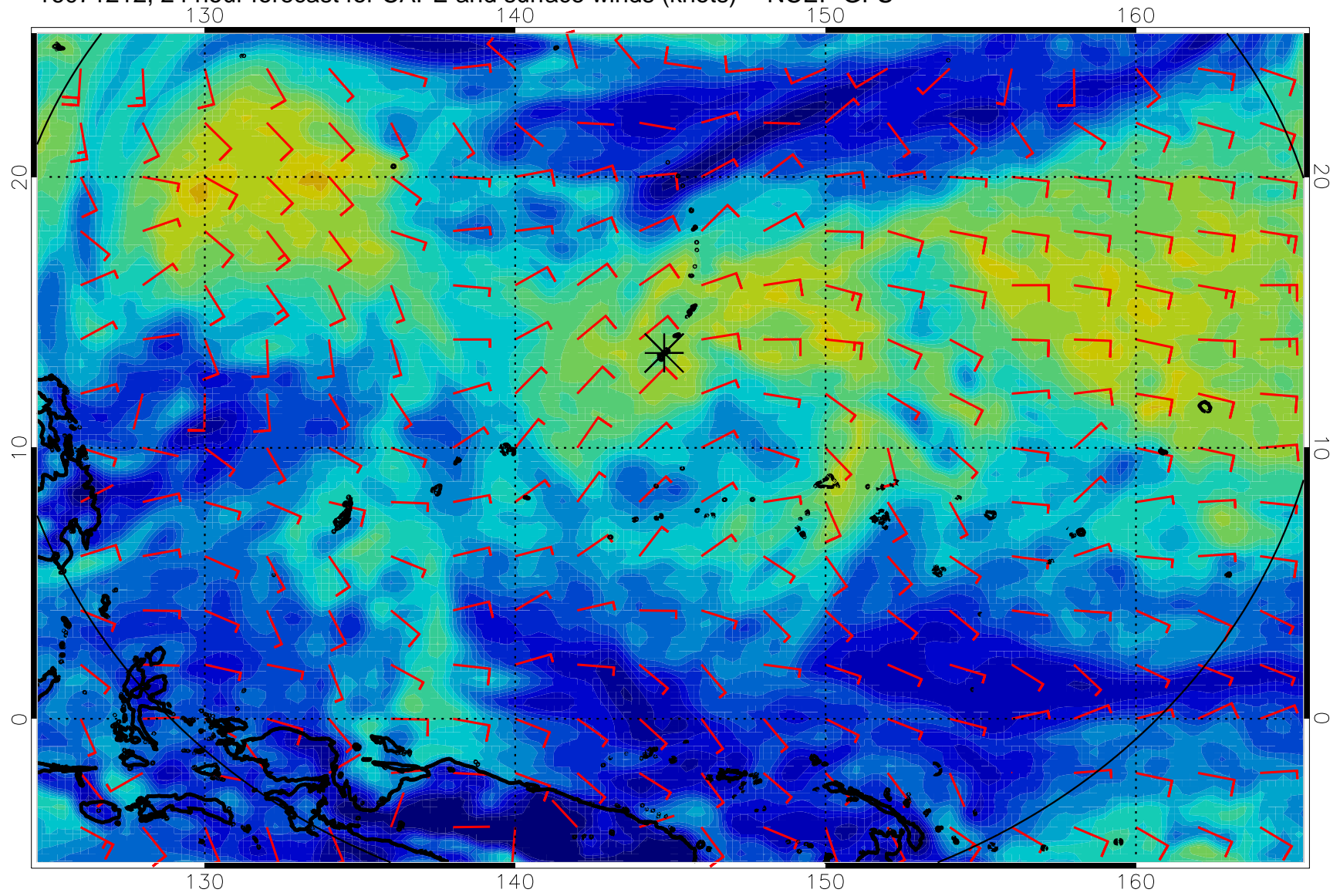


16071206, 18 hour forecast for CAPE and surface winds (knots) -- NCEP GFS



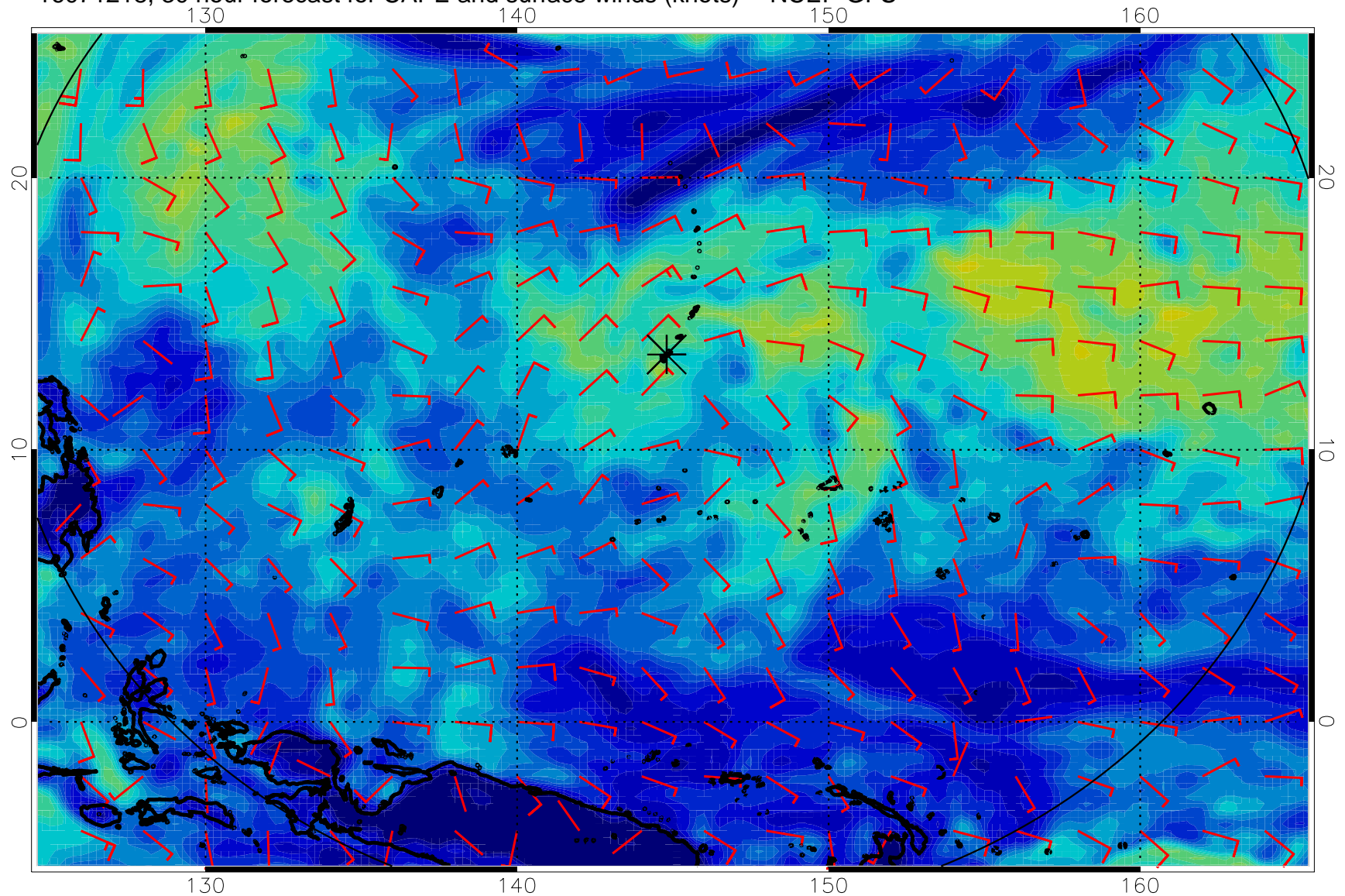


16071212, 24 hour forecast for CAPE and surface winds (knots) -- NCEP GFS

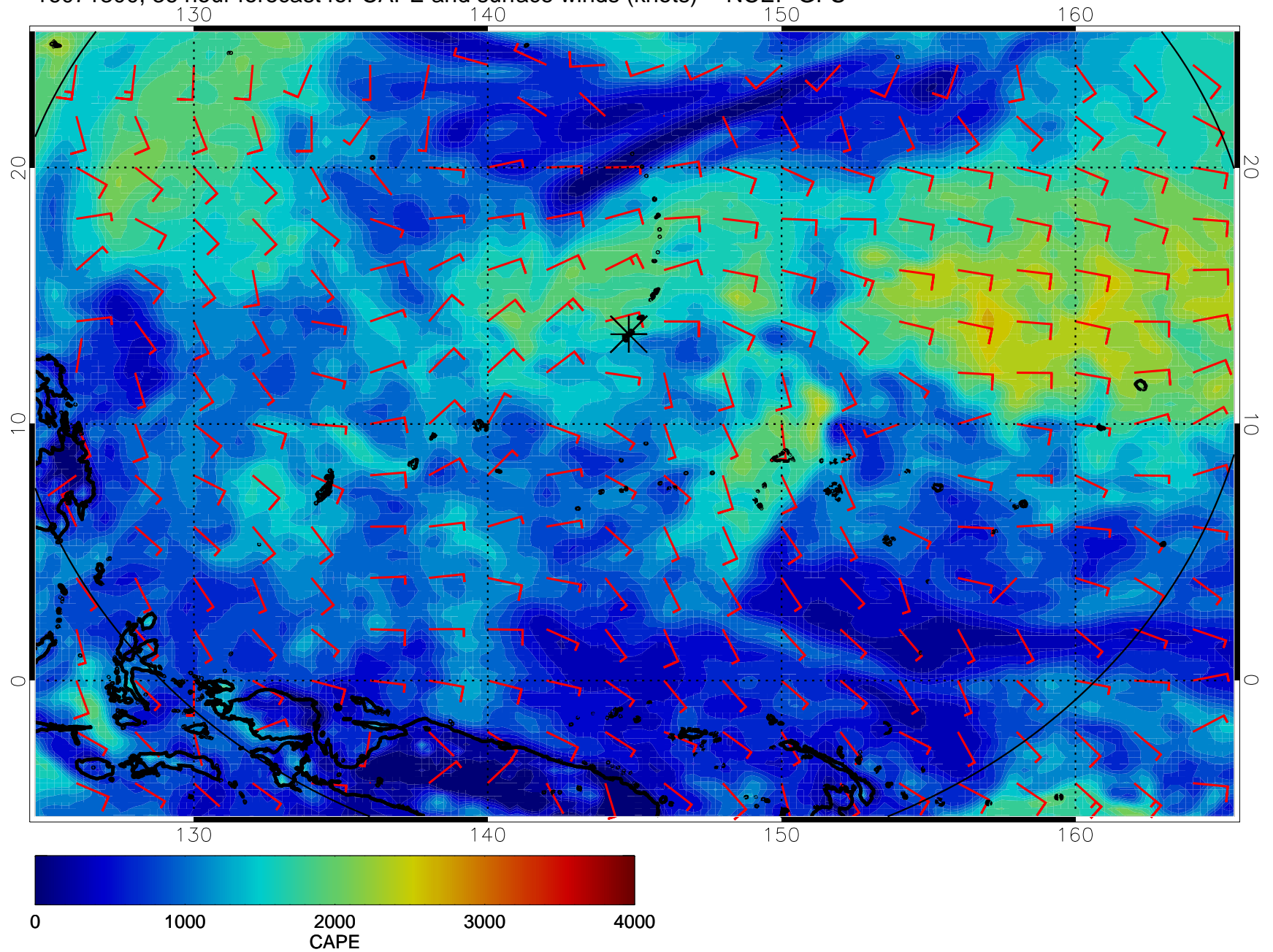




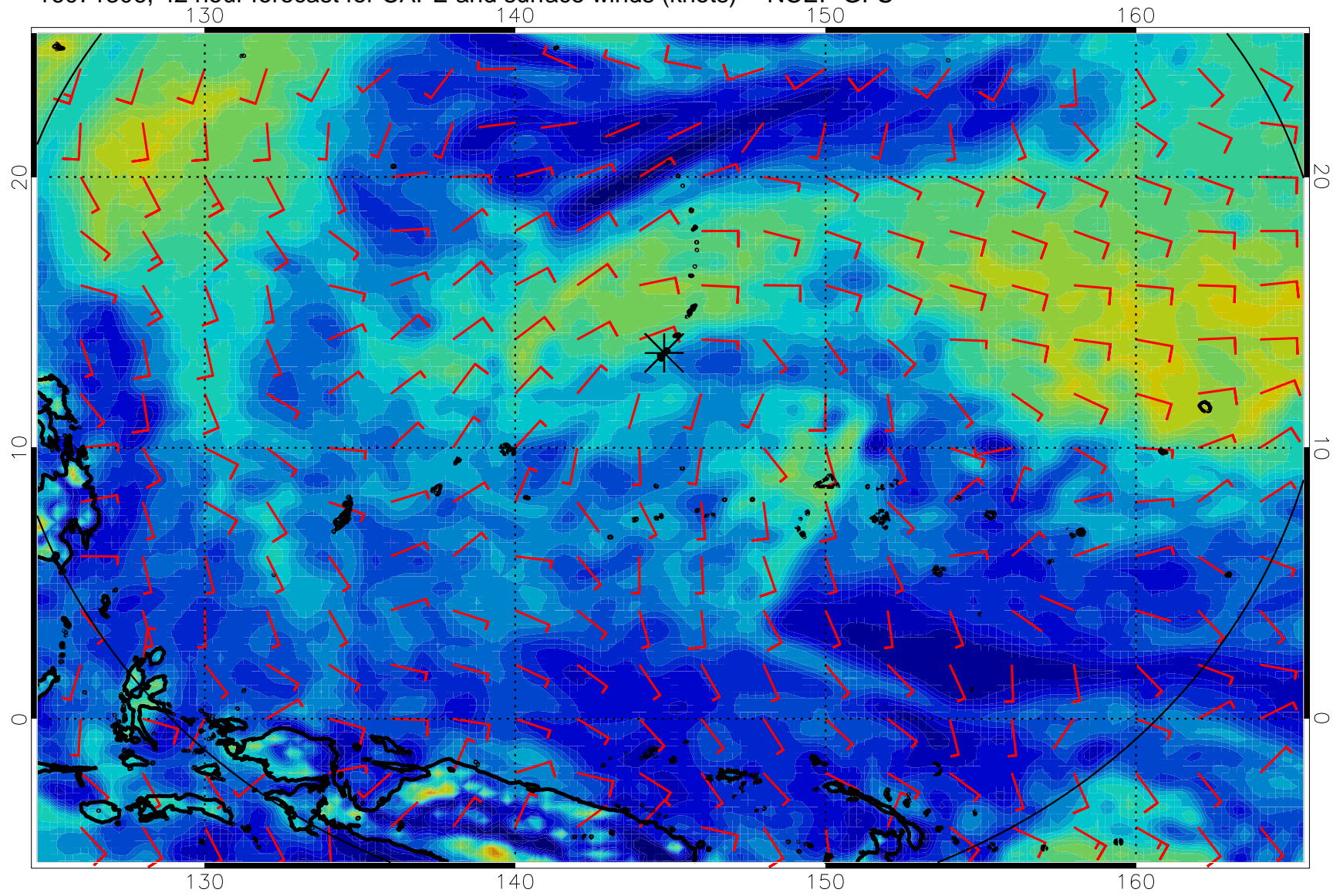
16071218, 30 hour forecast for CAPE and surface winds (knots) -- NCEP GFS



16071300, 36 hour forecast for CAPE and surface winds (knots) -- NCEP GFS

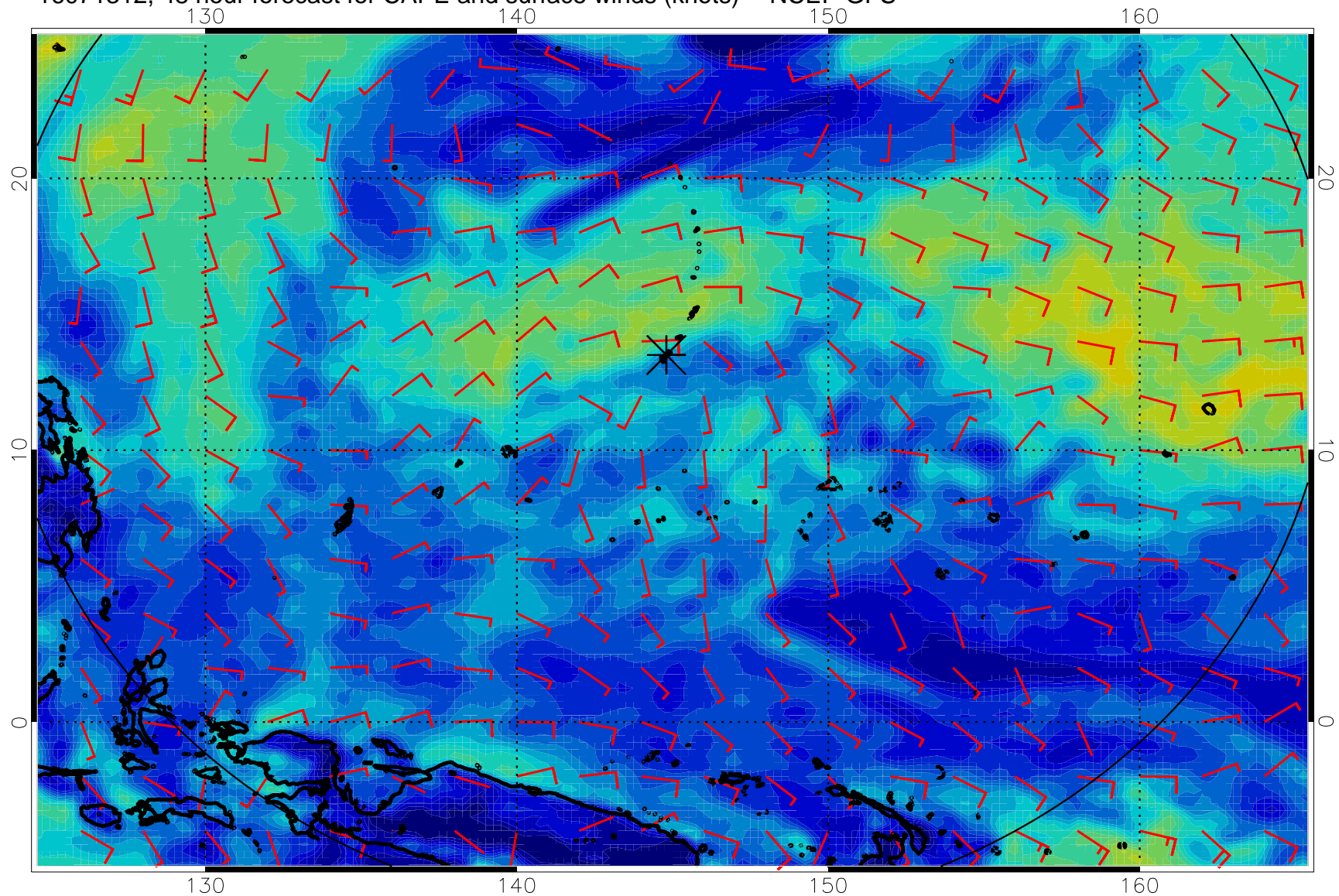


16071306, 42 hour forecast for CAPE and surface winds (knots) -- NCEP GFS

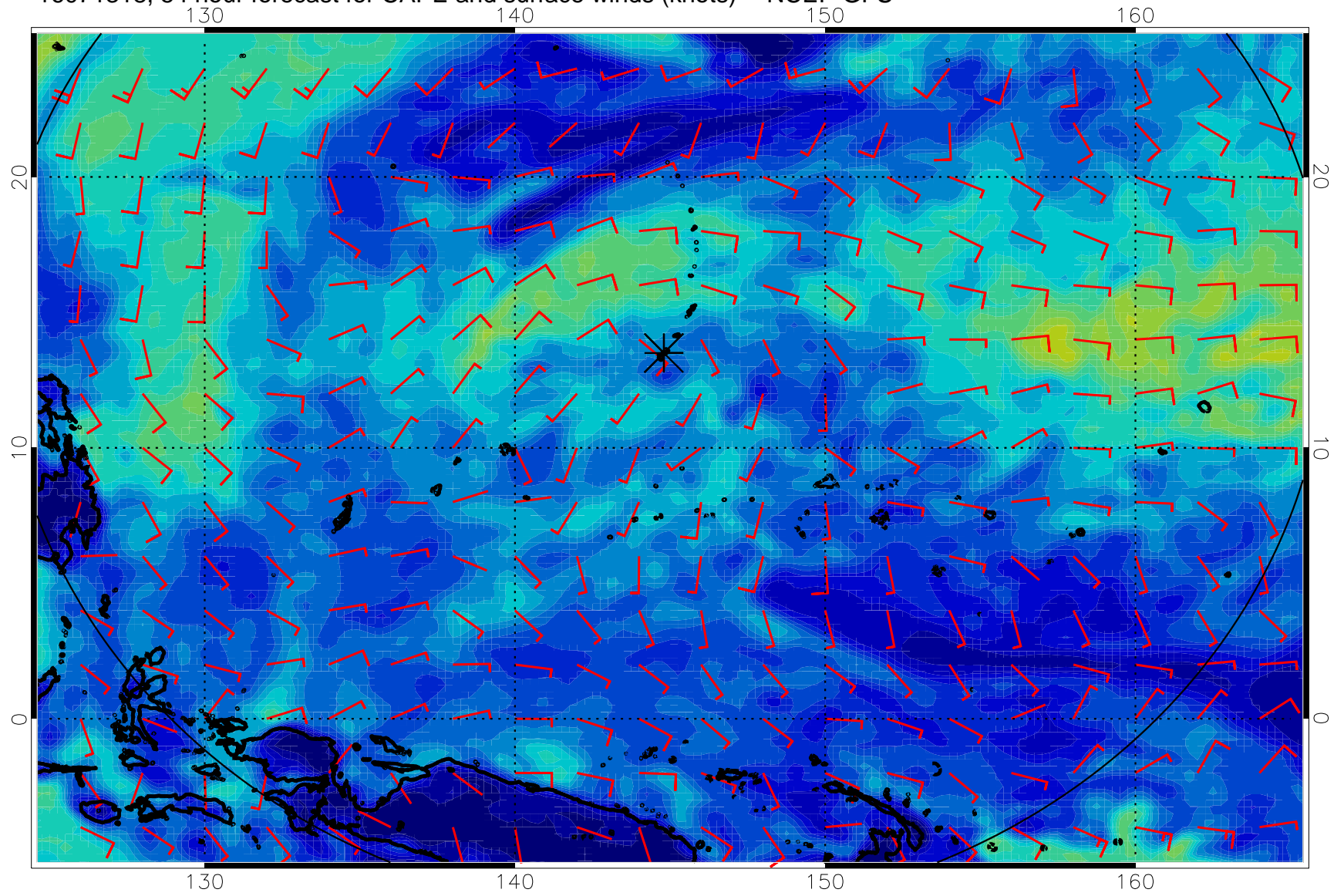




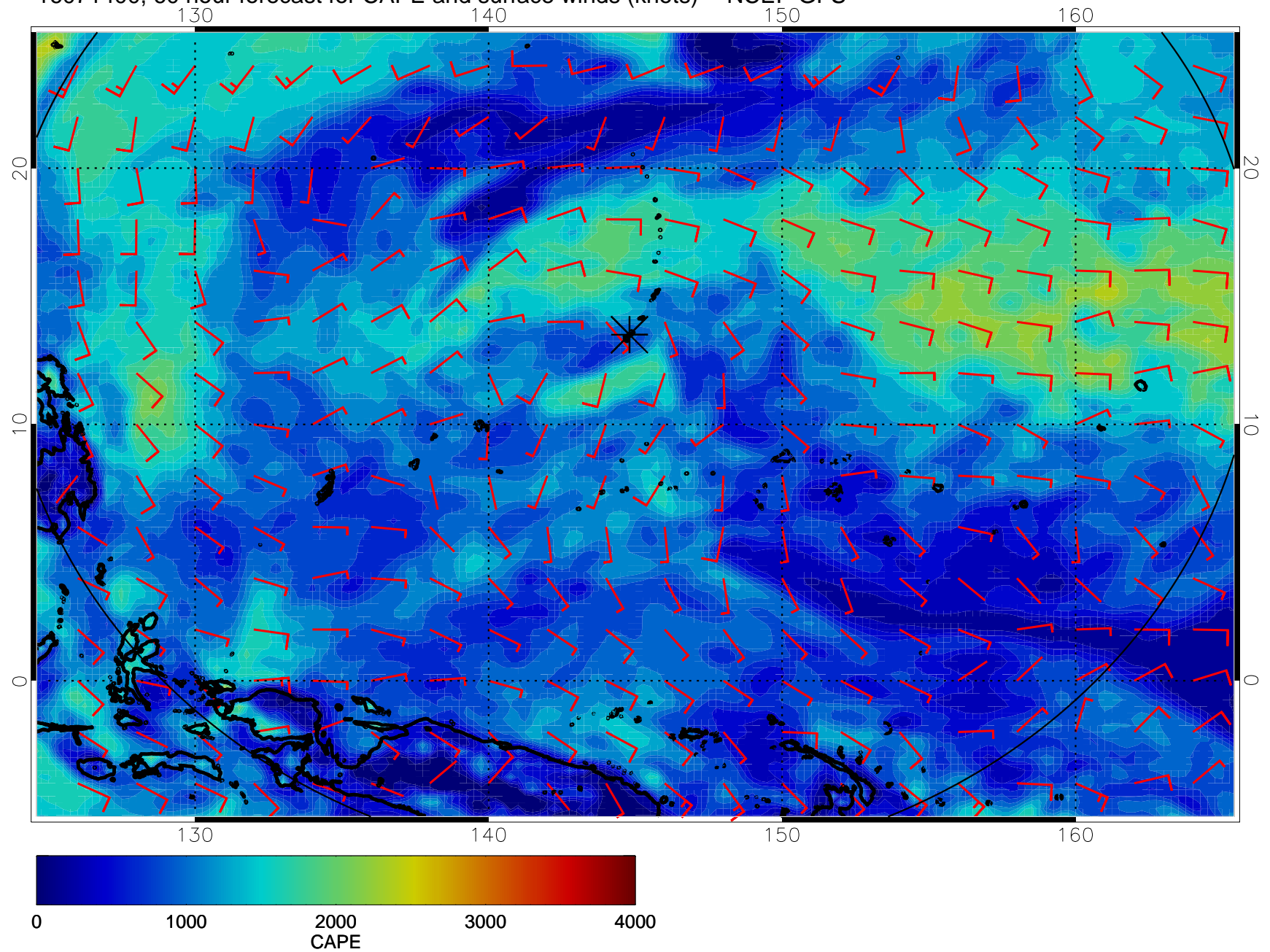
16071312, 48 hour forecast for CAPE and surface winds (knots) -- NCEP GFS



16071318, 54 hour forecast for CAPE and surface winds (knots) -- NCEP GFS

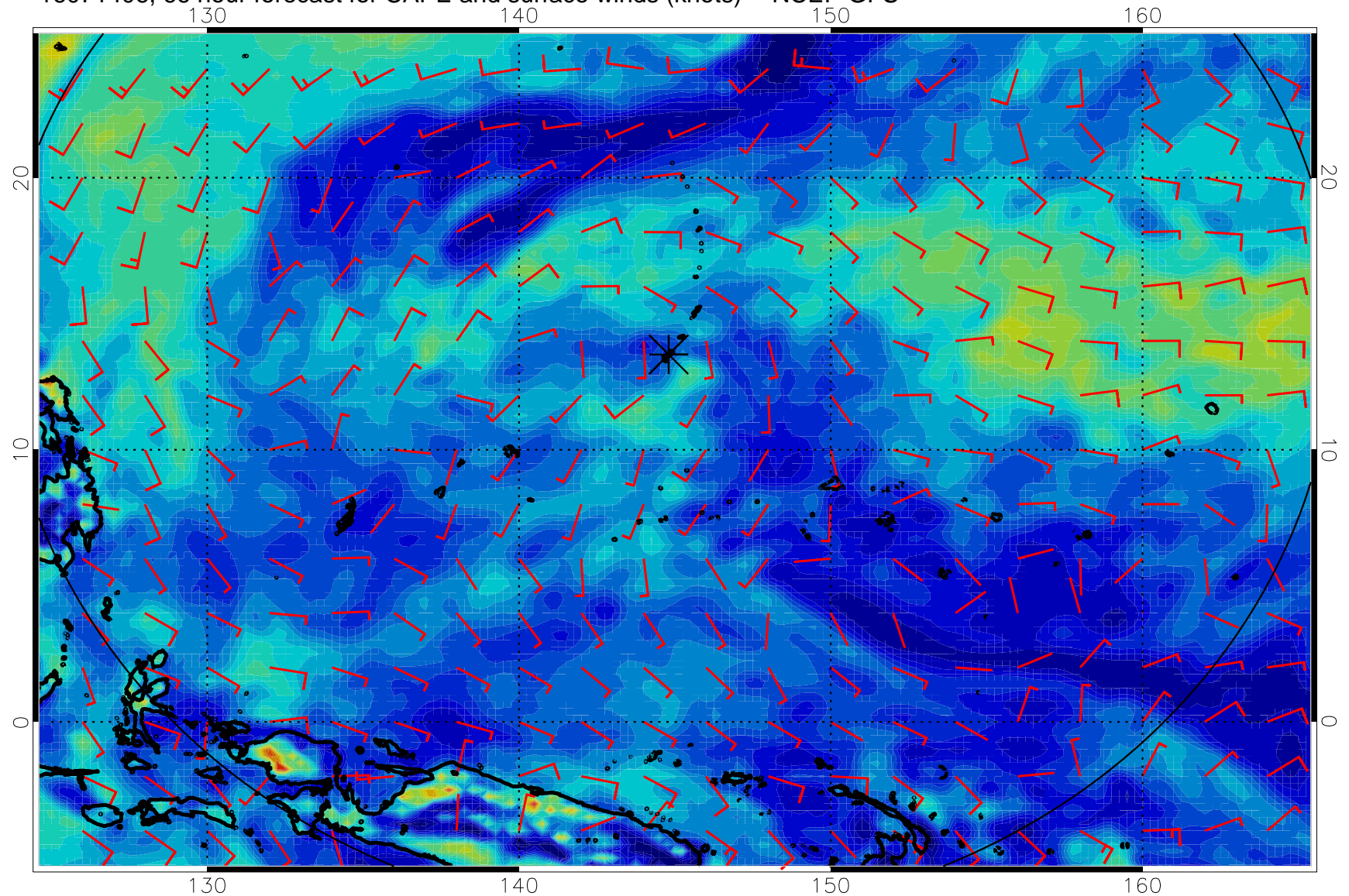


16071400, 60 hour forecast for CAPE and surface winds (knots) -- NCEP GFS

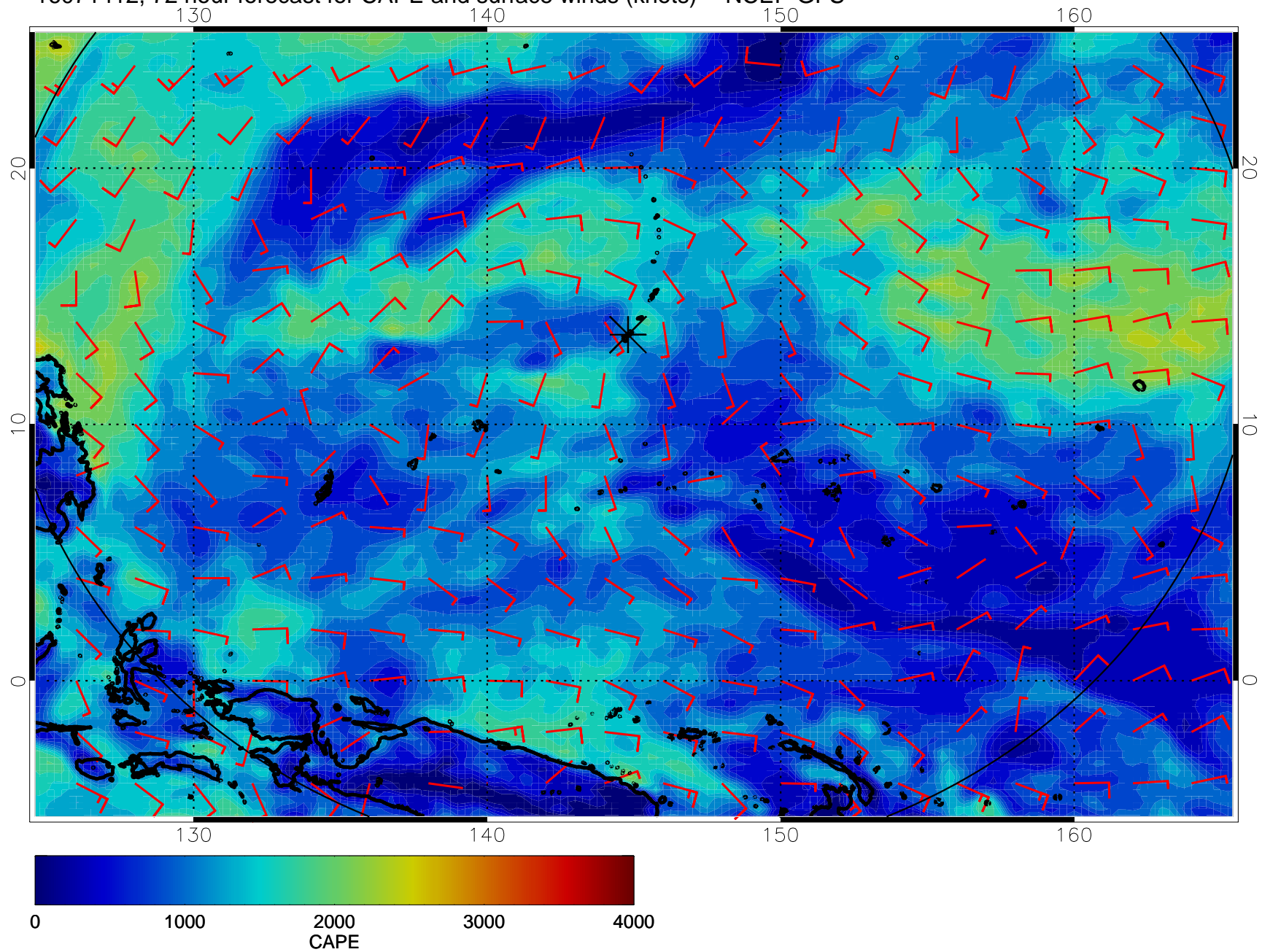




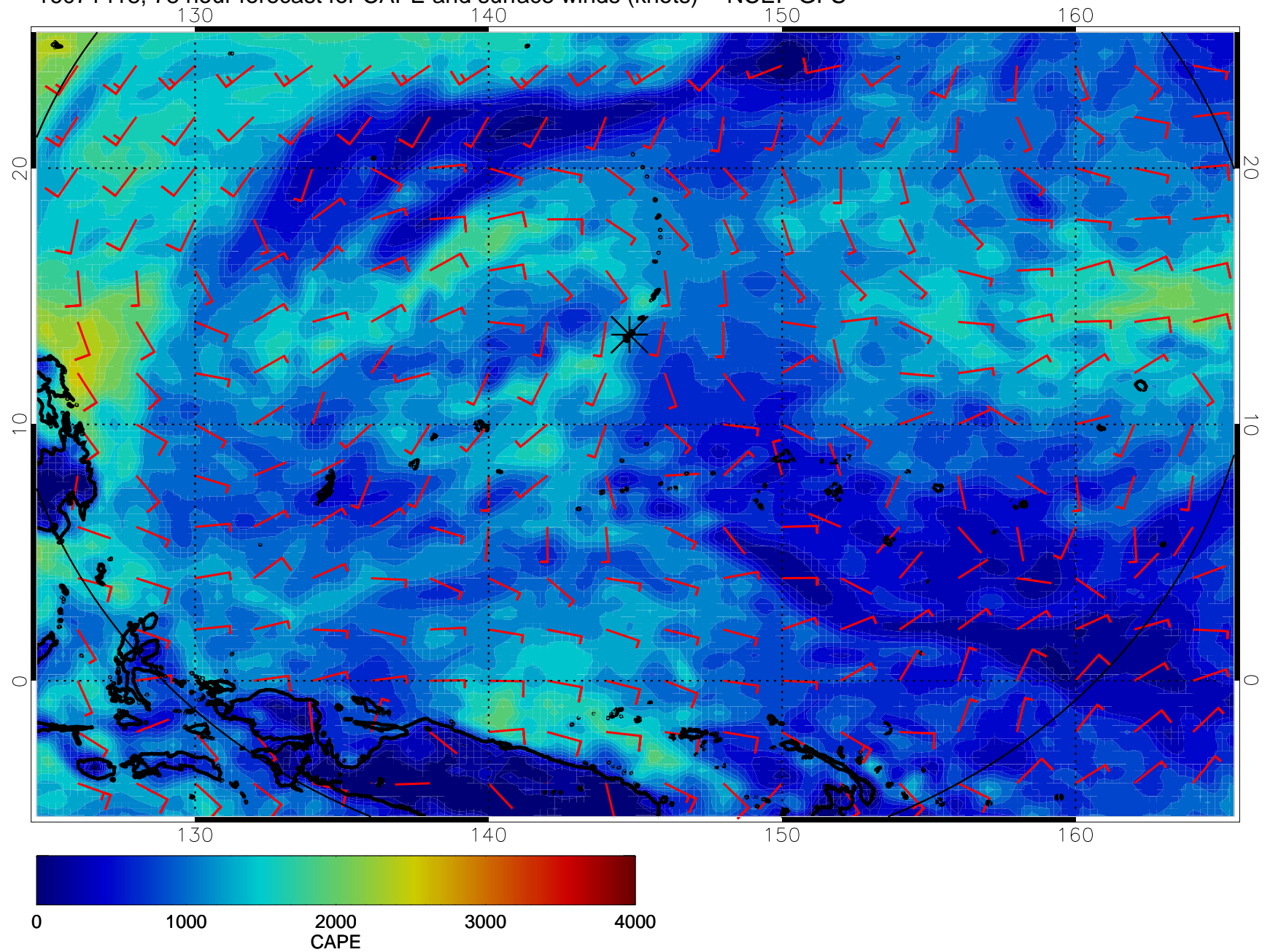
16071406, 66 hour forecast for CAPE and surface winds (knots) -- NCEP GFS



16071412, 72 hour forecast for CAPE and surface winds (knots) -- NCEP GFS

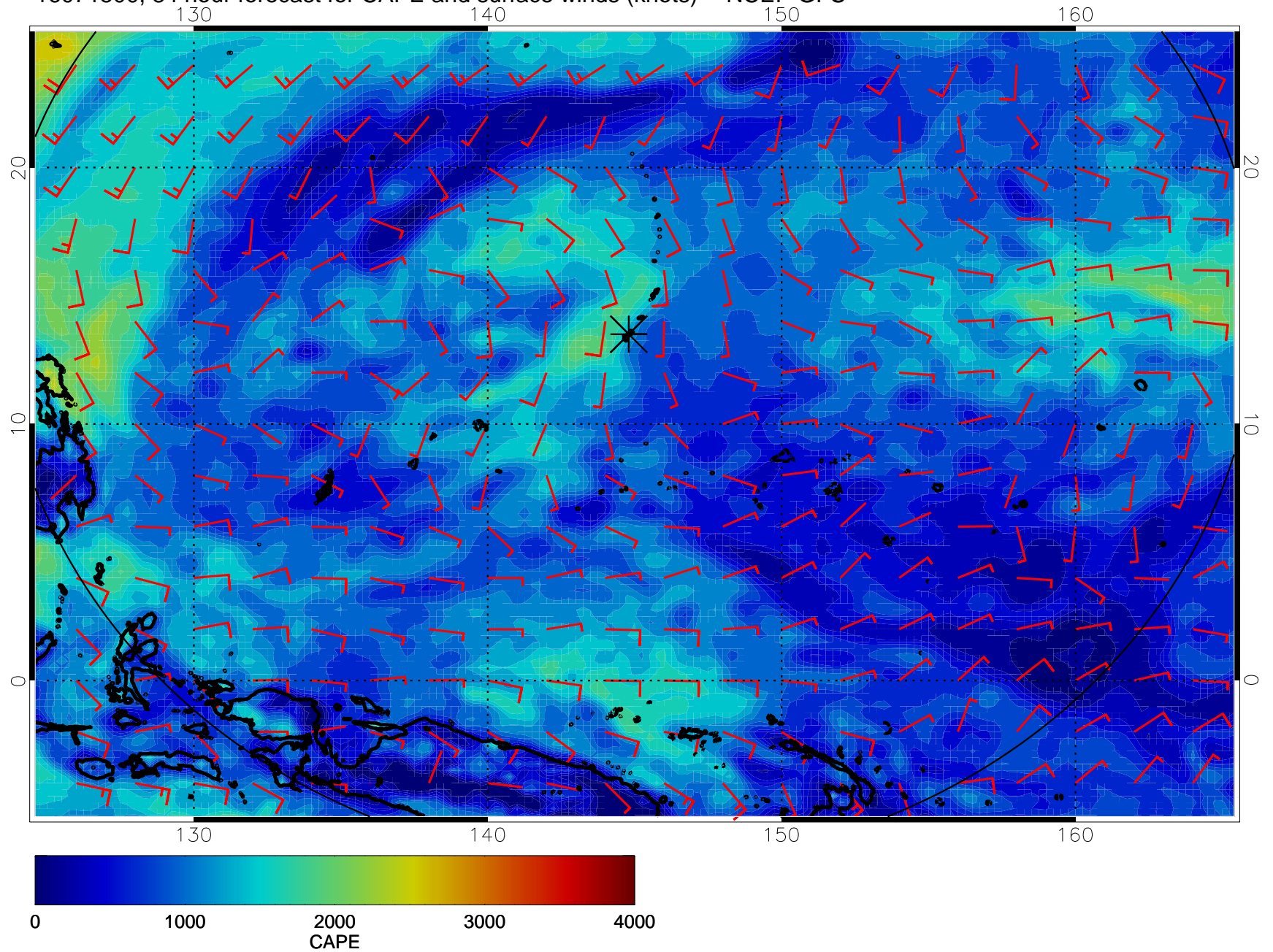


16071418, 78 hour forecast for CAPE and surface winds (knots) -- NCEP GFS

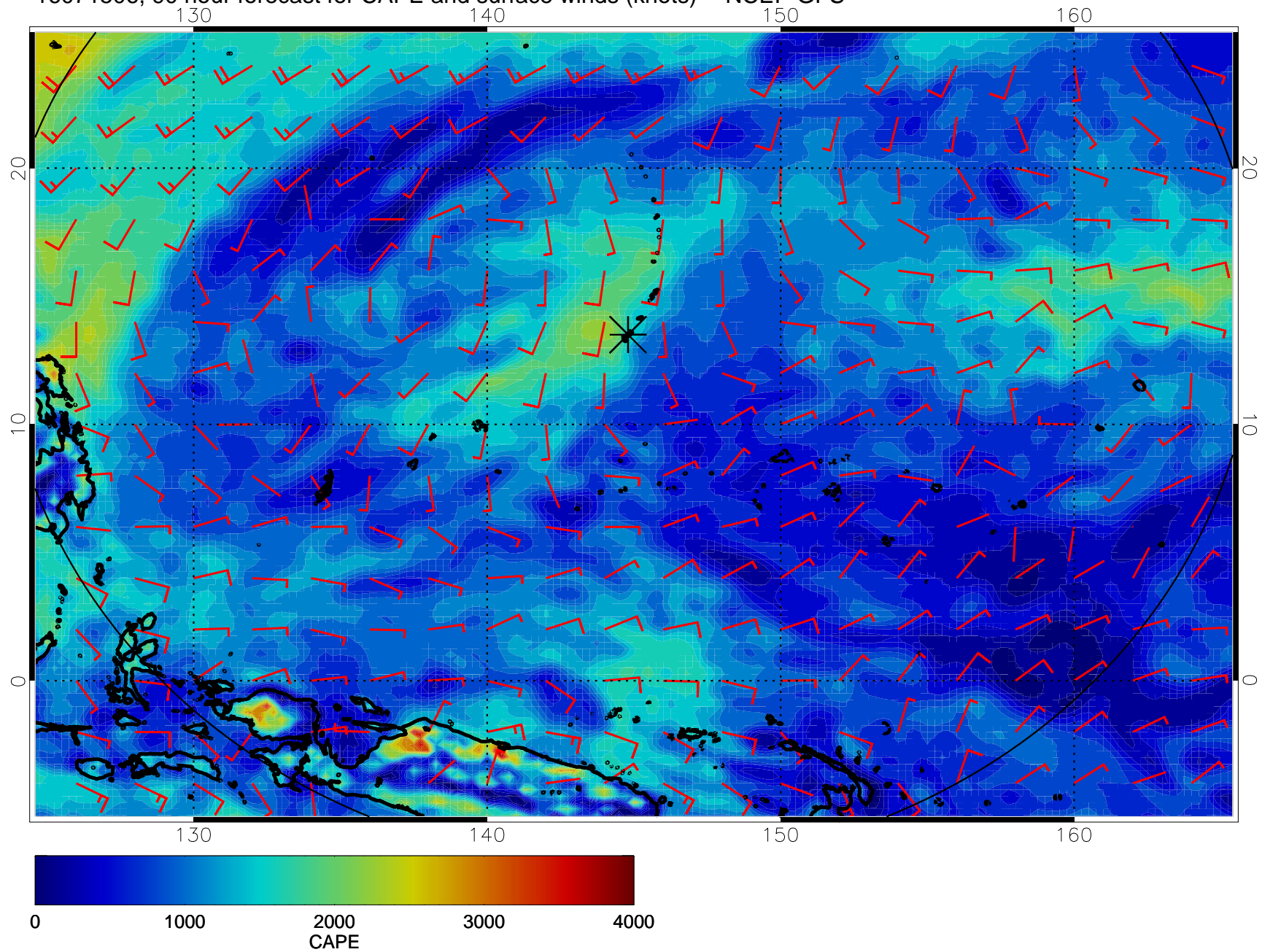




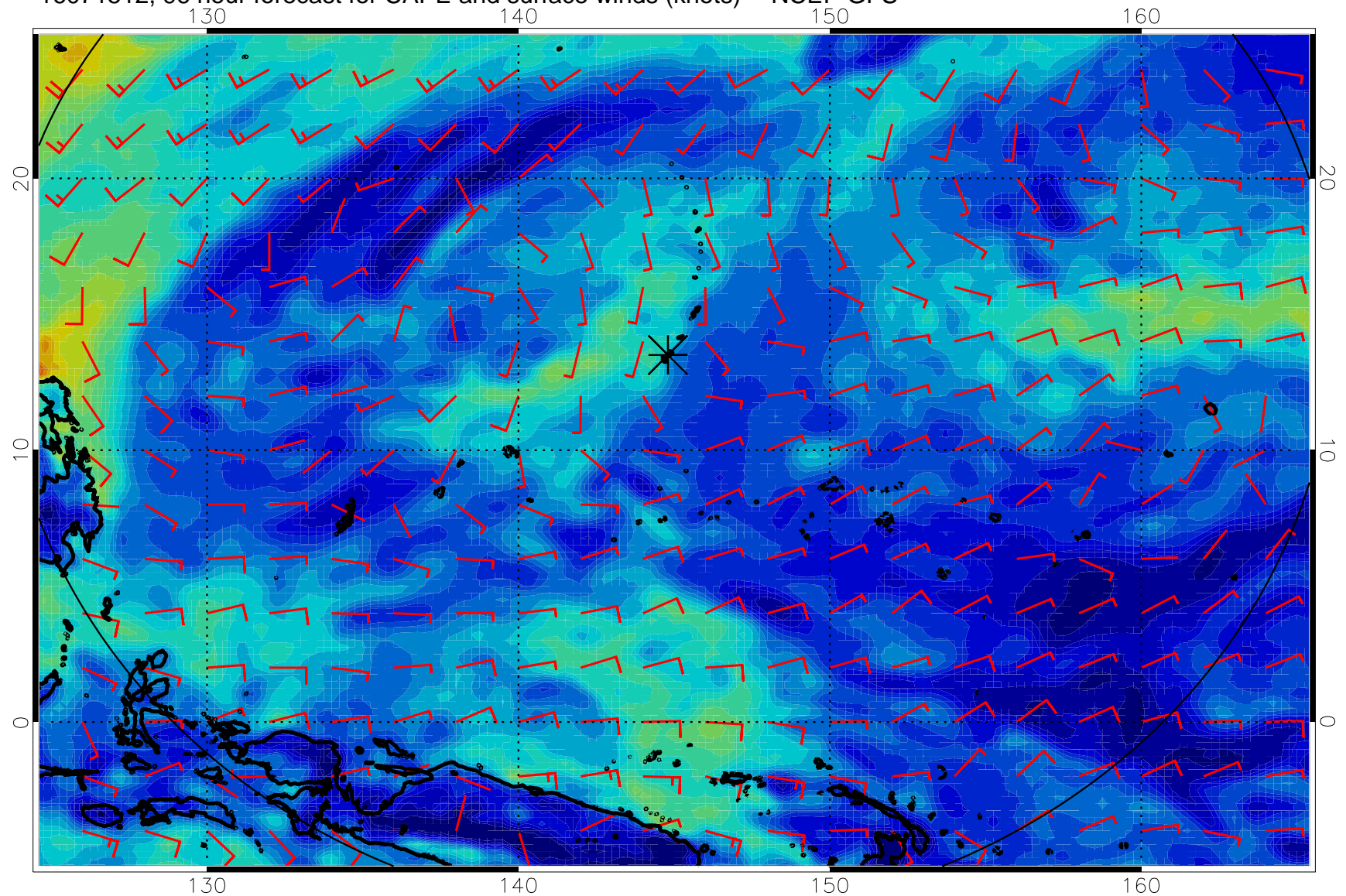
16071500, 84 hour forecast for CAPE and surface winds (knots) -- NCEP GFS



16071506, 90 hour forecast for CAPE and surface winds (knots) -- NCEP GFS

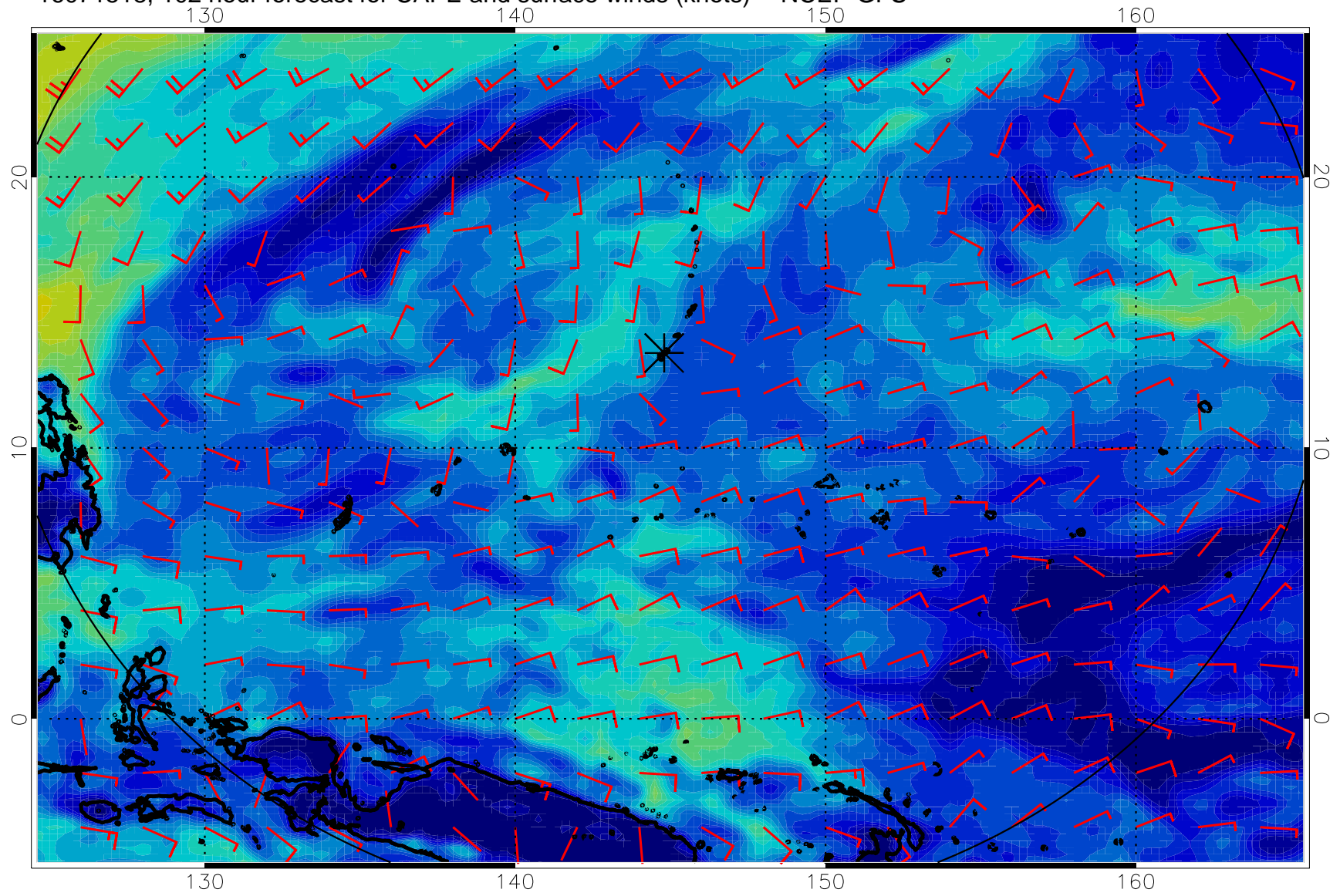


16071512, 96 hour forecast for CAPE and surface winds (knots) -- NCEP GFS

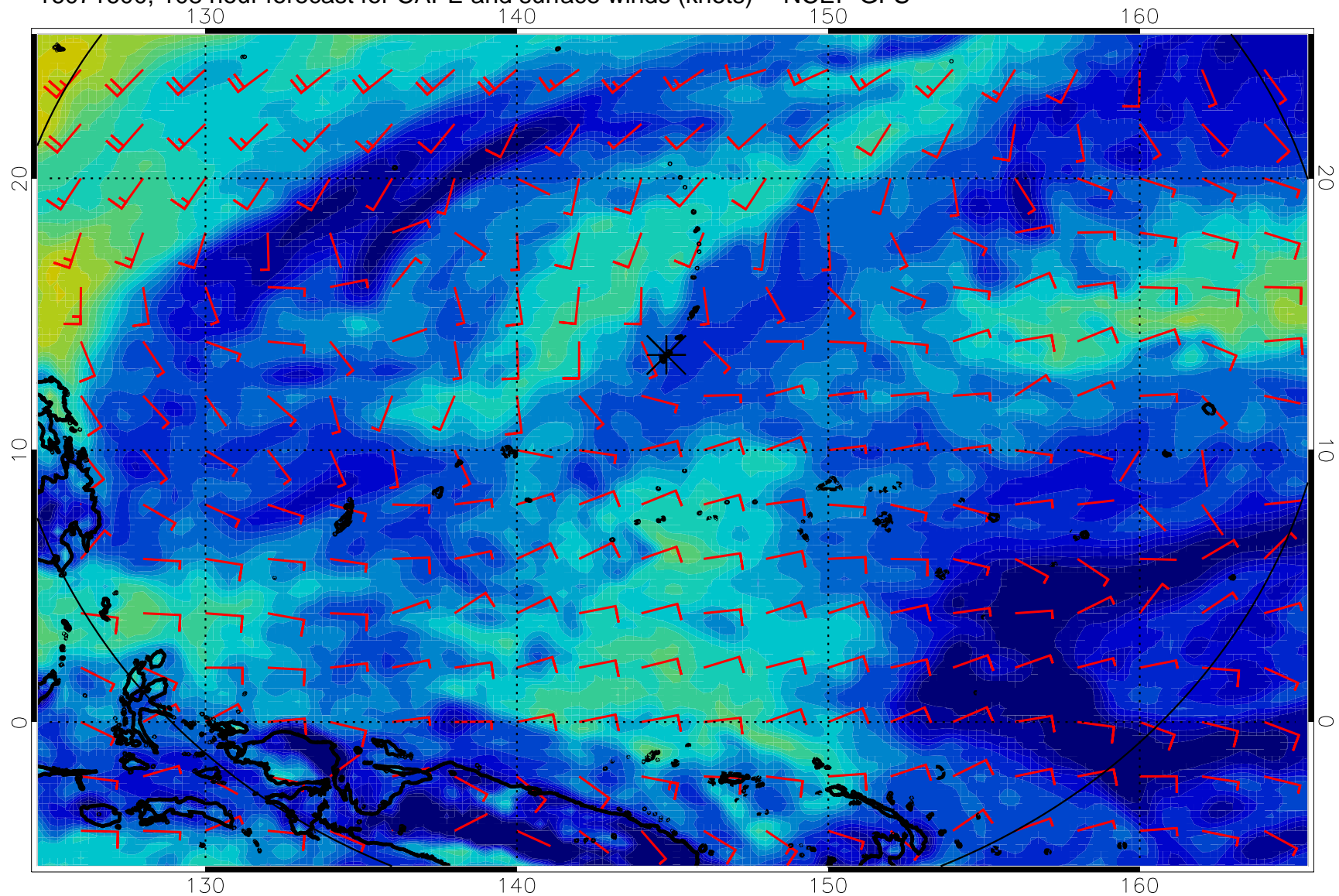




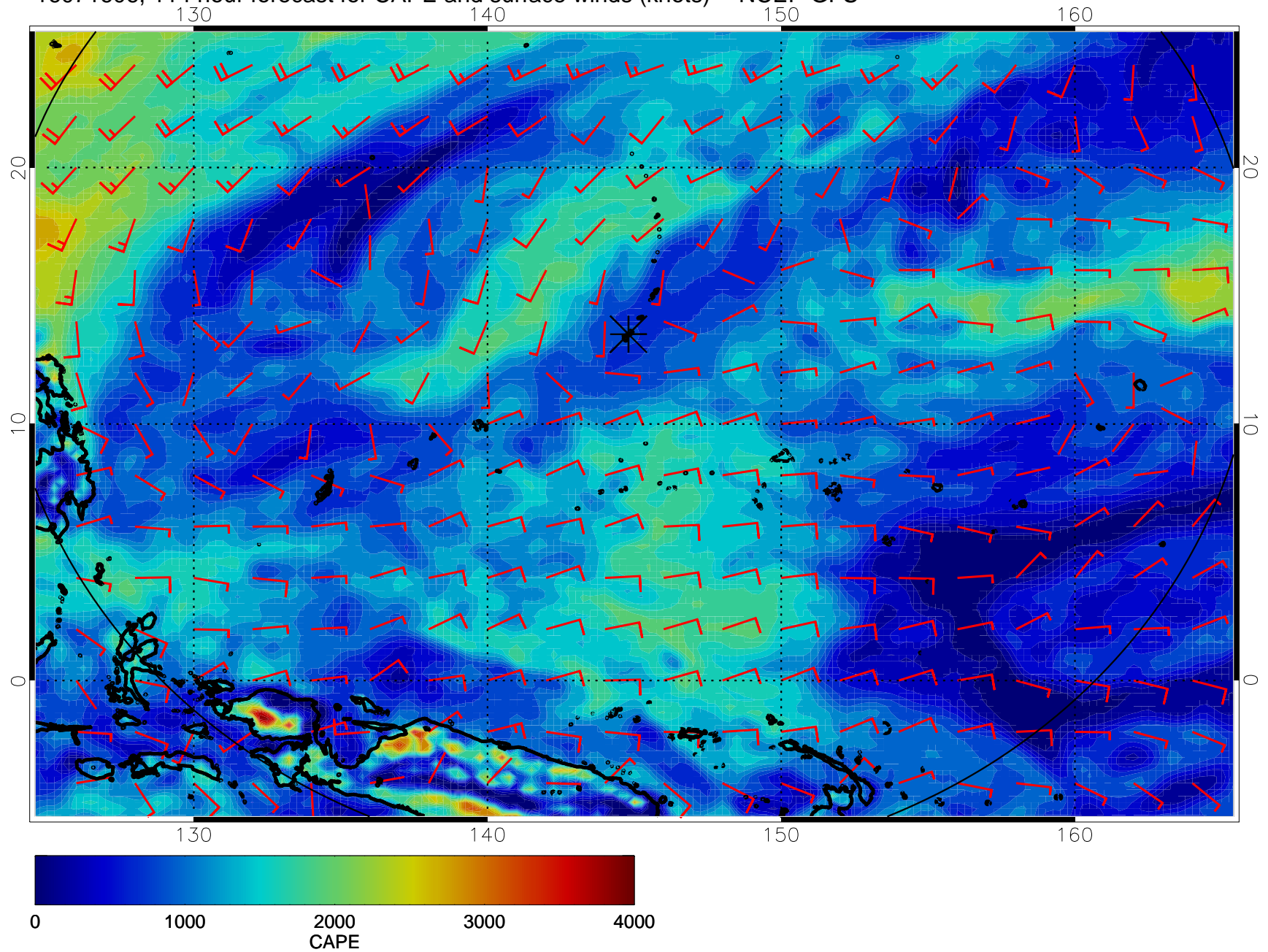
16071518, 102 hour forecast for CAPE and surface winds (knots) -- NCEP GFS



16071600, 108 hour forecast for CAPE and surface winds (knots) -- NCEP GFS



16071606, 114 hour forecast for CAPE and surface winds (knots) -- NCEP GFS





16071612, 120 hour forecast for CAPE and surface winds (knots) -- NCEP GFS

