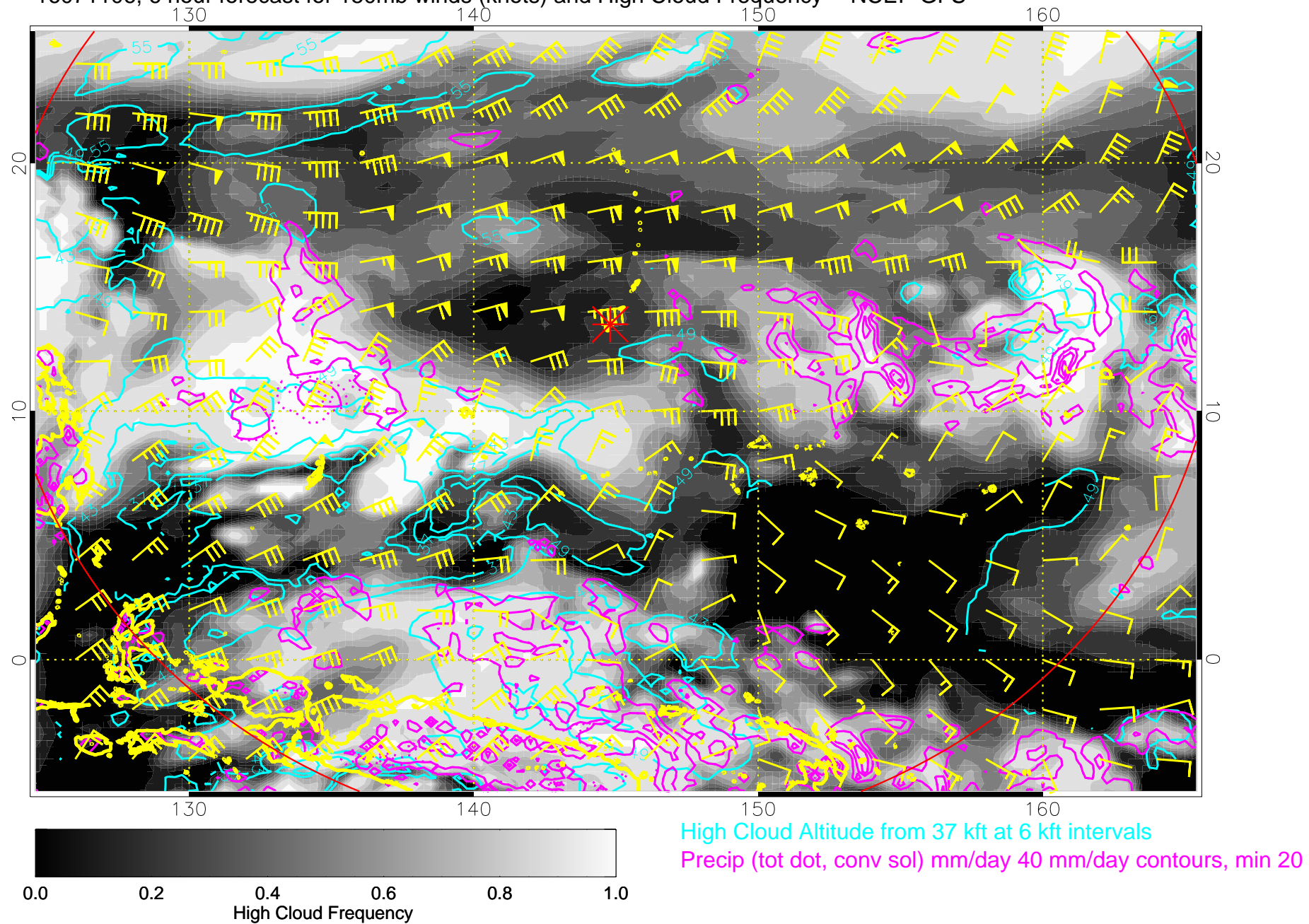
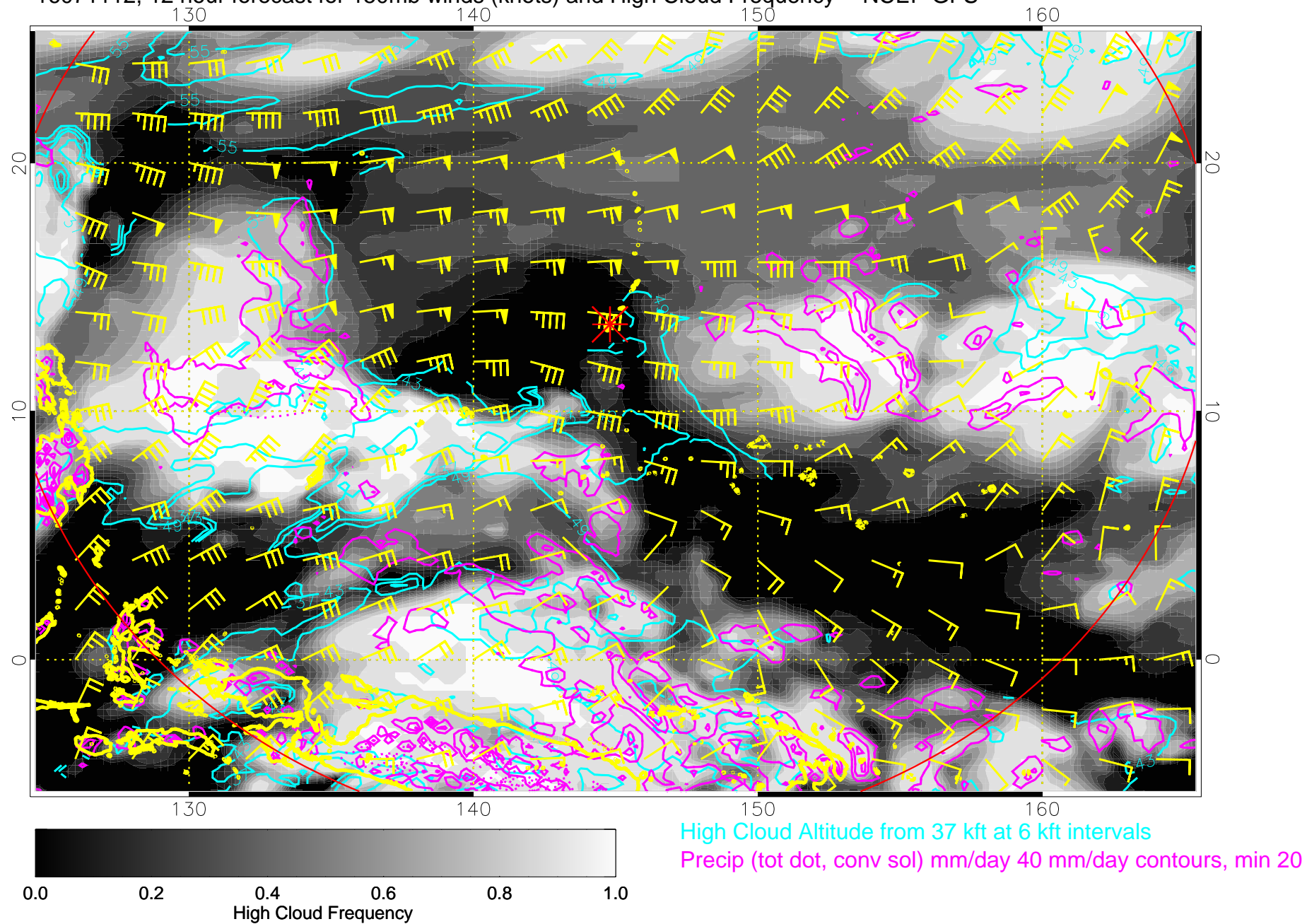


16071106, 6 hour forecast for 150mb winds (knots) and High Cloud Frequency -- NCEP GFS

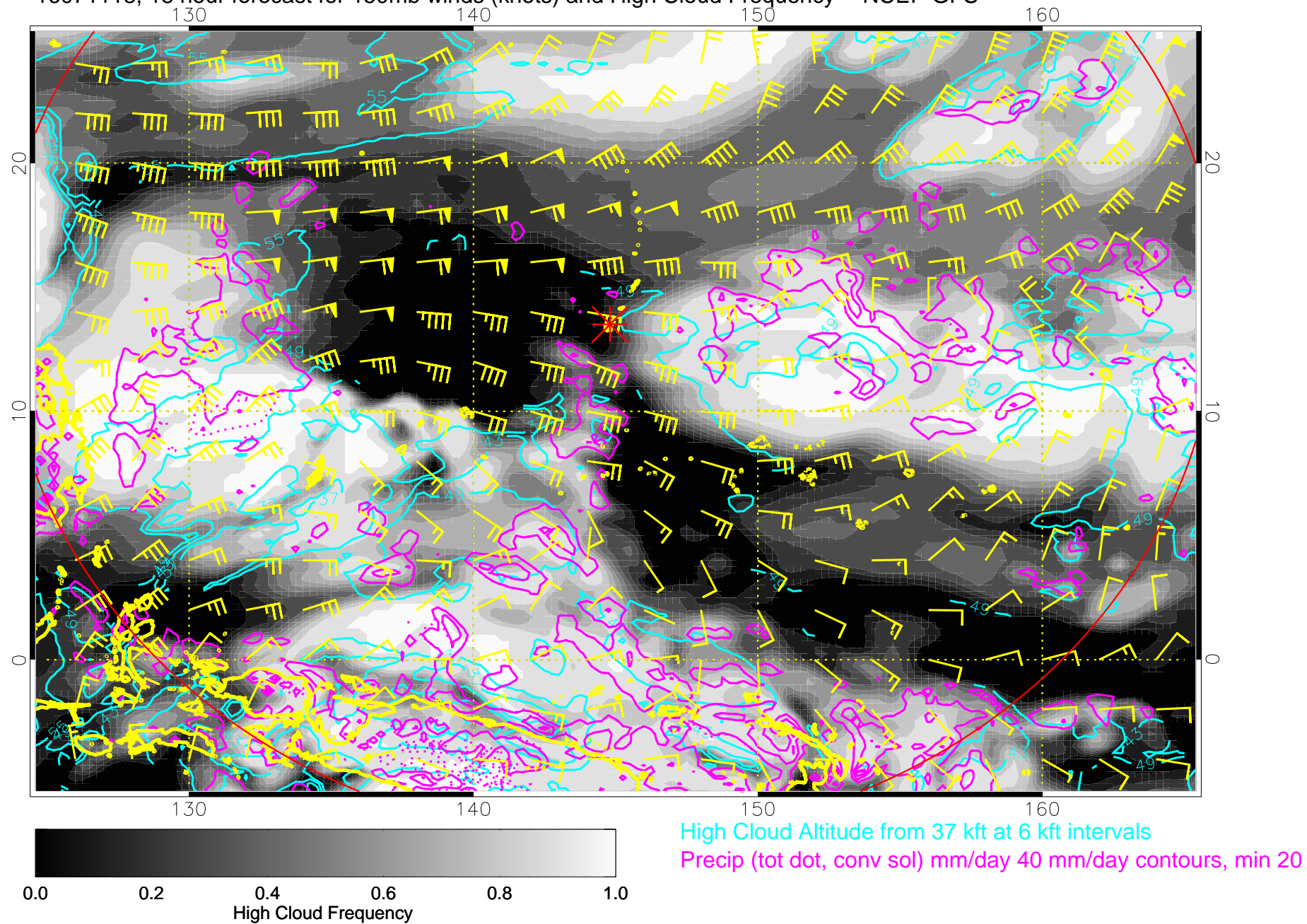


16071112, 12 hour forecast for 150mb winds (knots) and High Cloud Frequency -- NCEP GFS

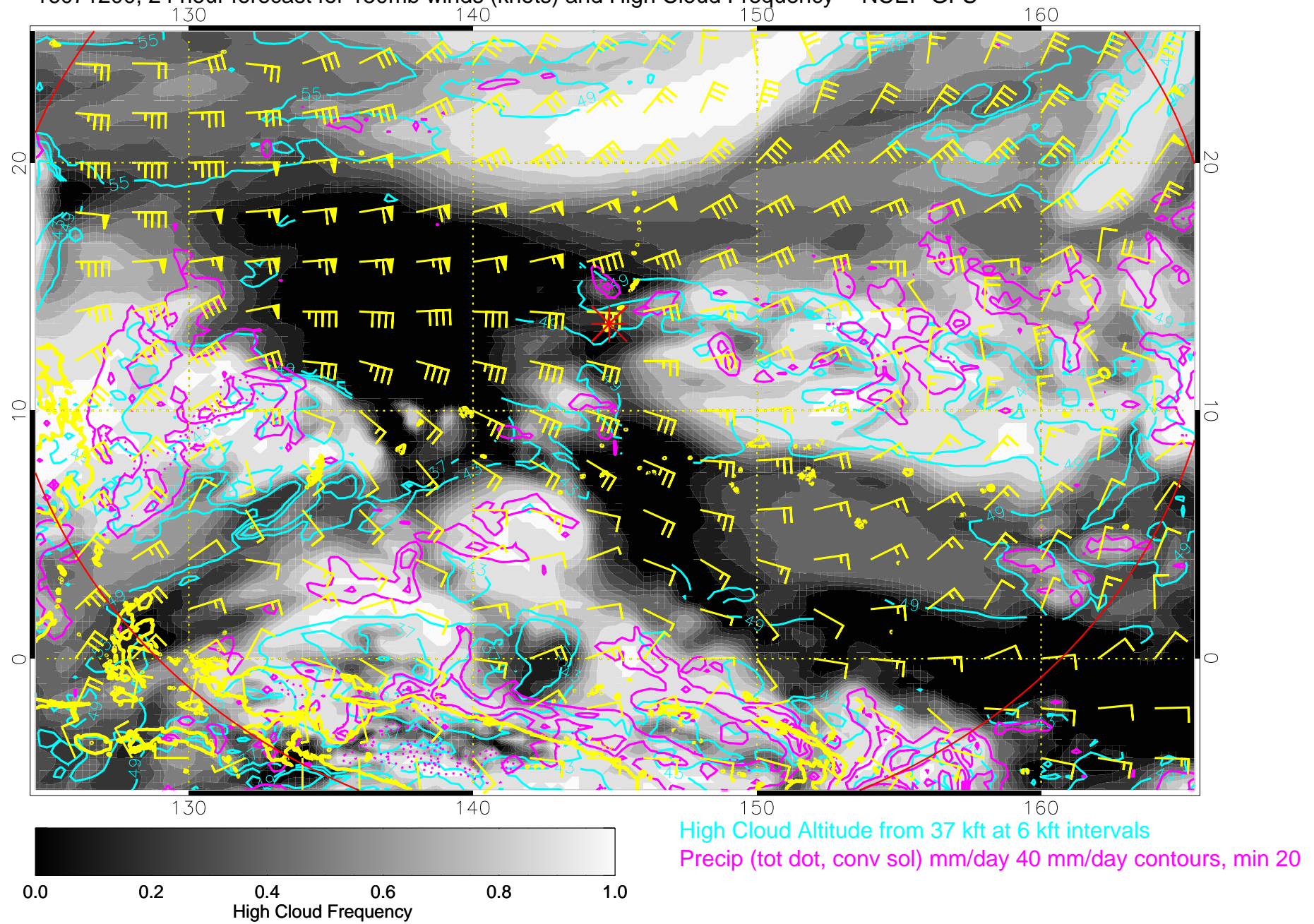




16071118, 18 hour forecast for 150mb winds (knots) and High Cloud Frequency -- NCEP GFS

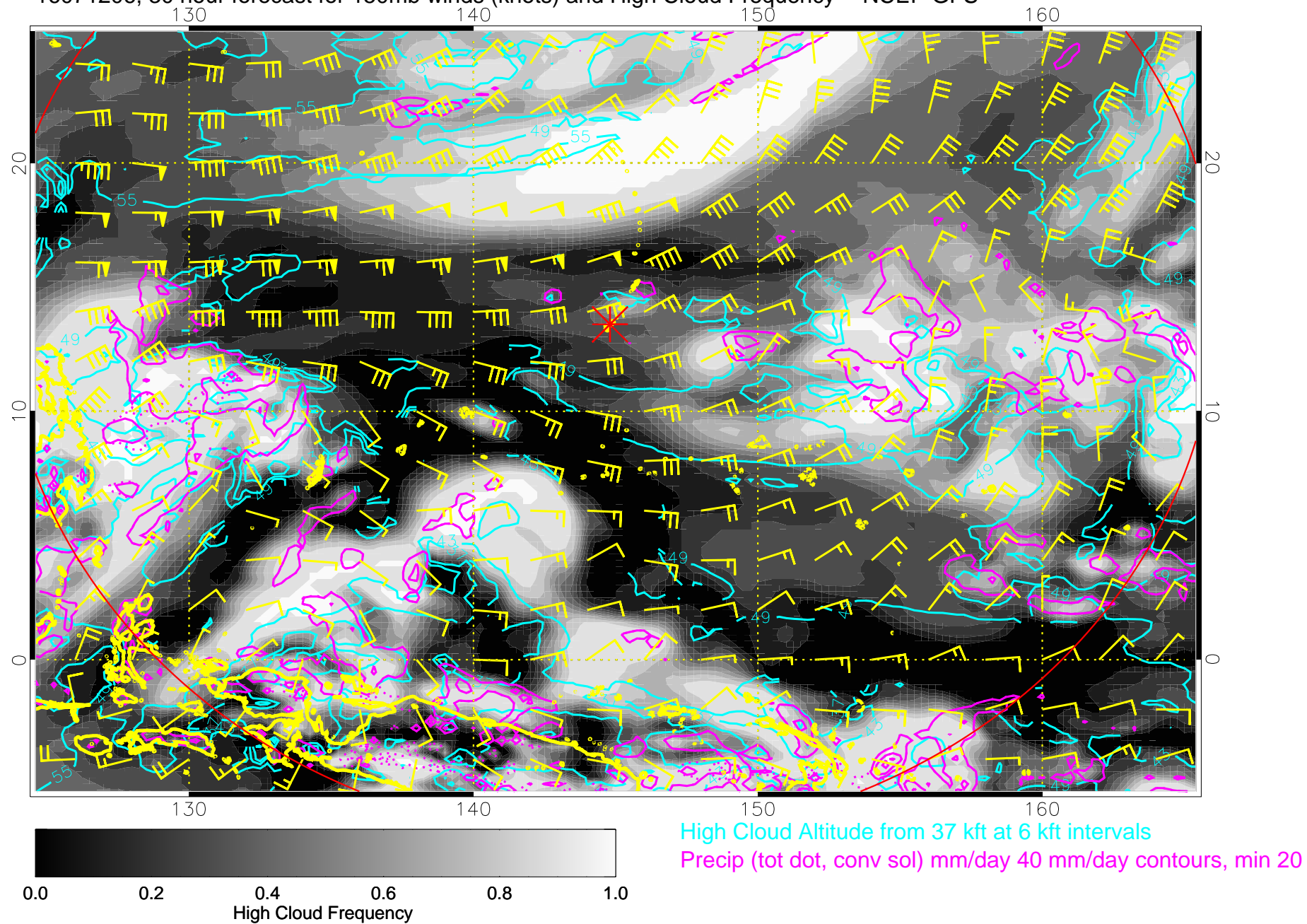


16071200, 24 hour forecast for 150mb winds (knots) and High Cloud Frequency -- NCEP GFS

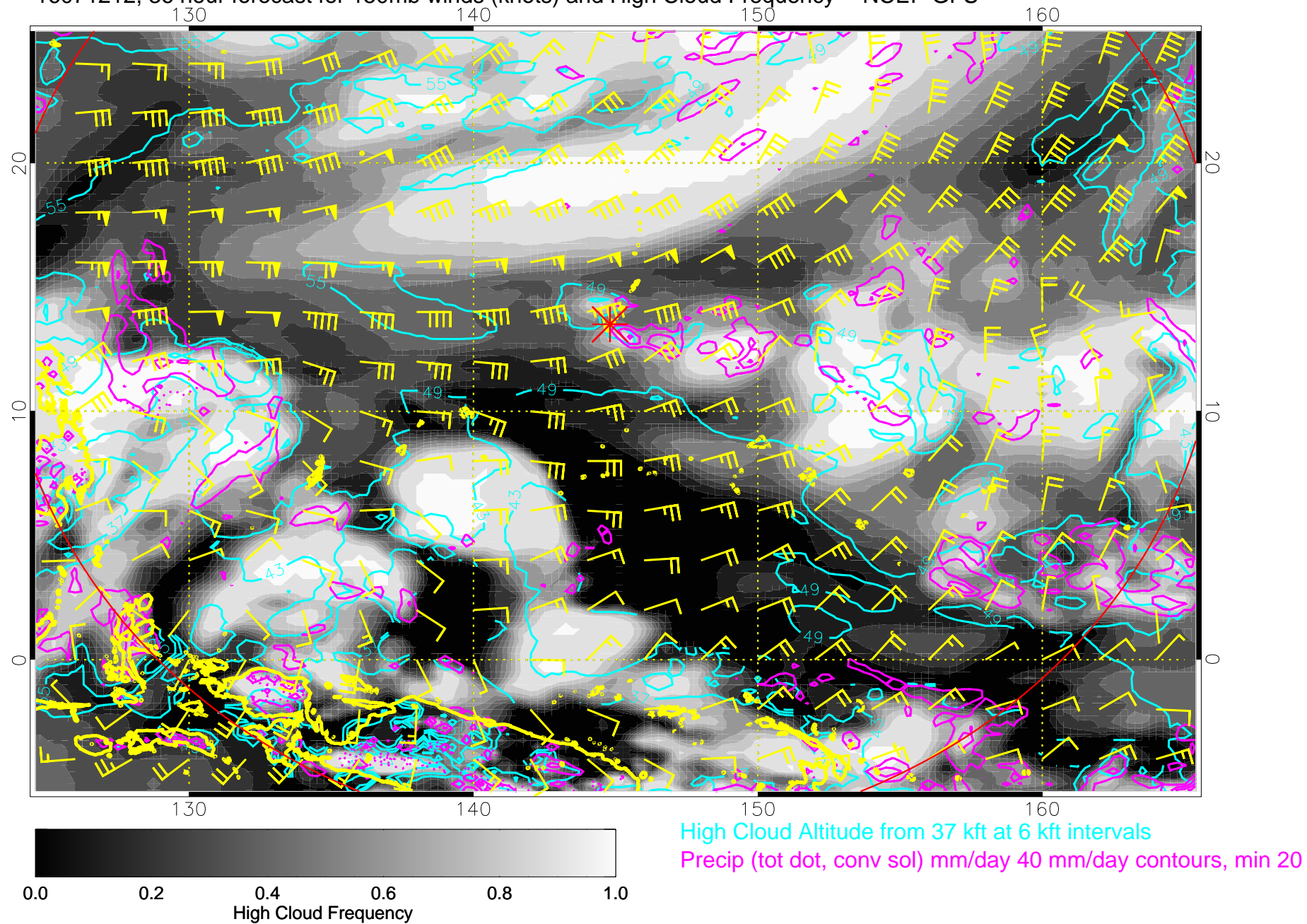




16071206, 30 hour forecast for 150mb winds (knots) and High Cloud Frequency -- NCEP GFS

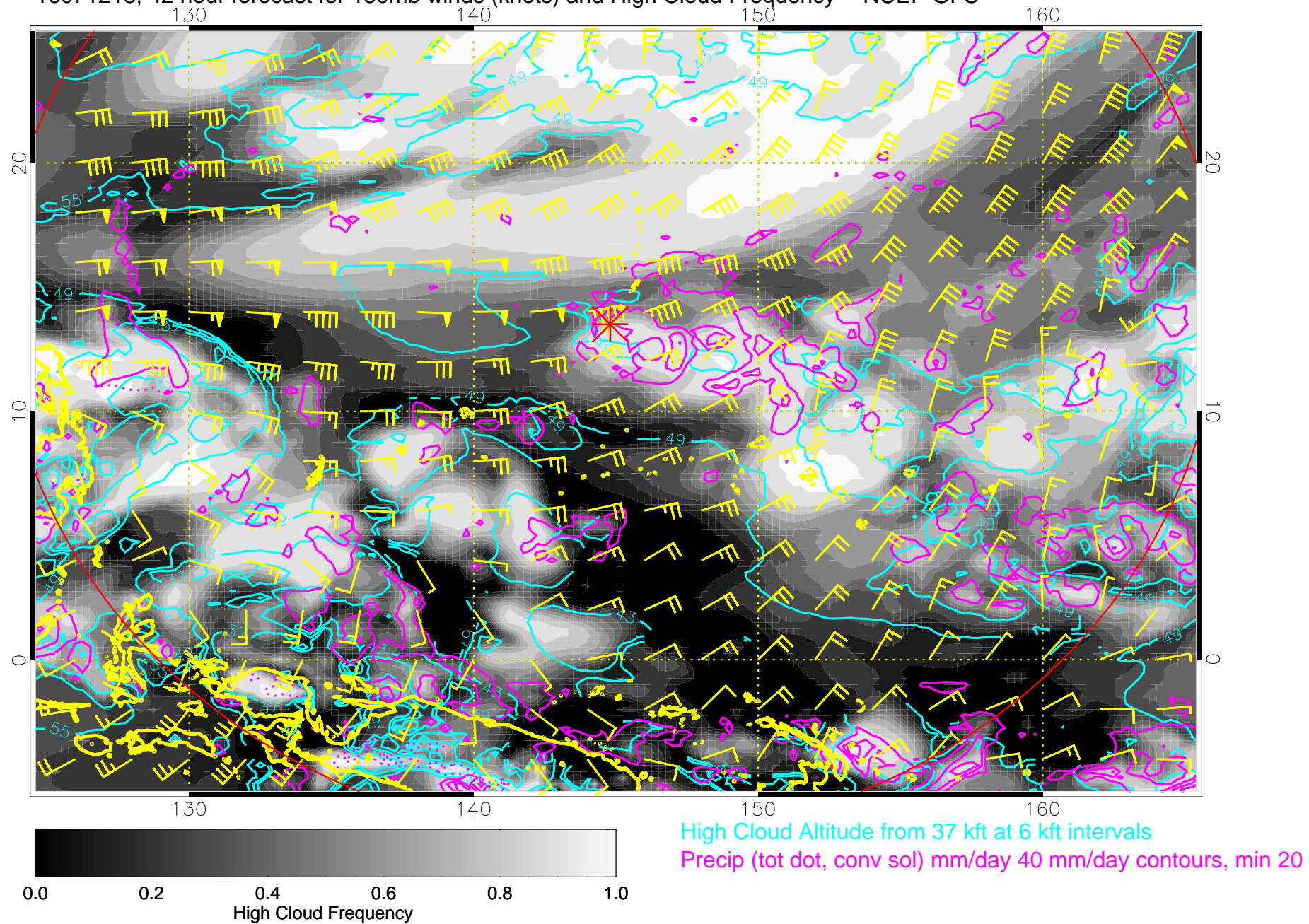


16071212, 36 hour forecast for 150mb winds (knots) and High Cloud Frequency -- NCEP GFS

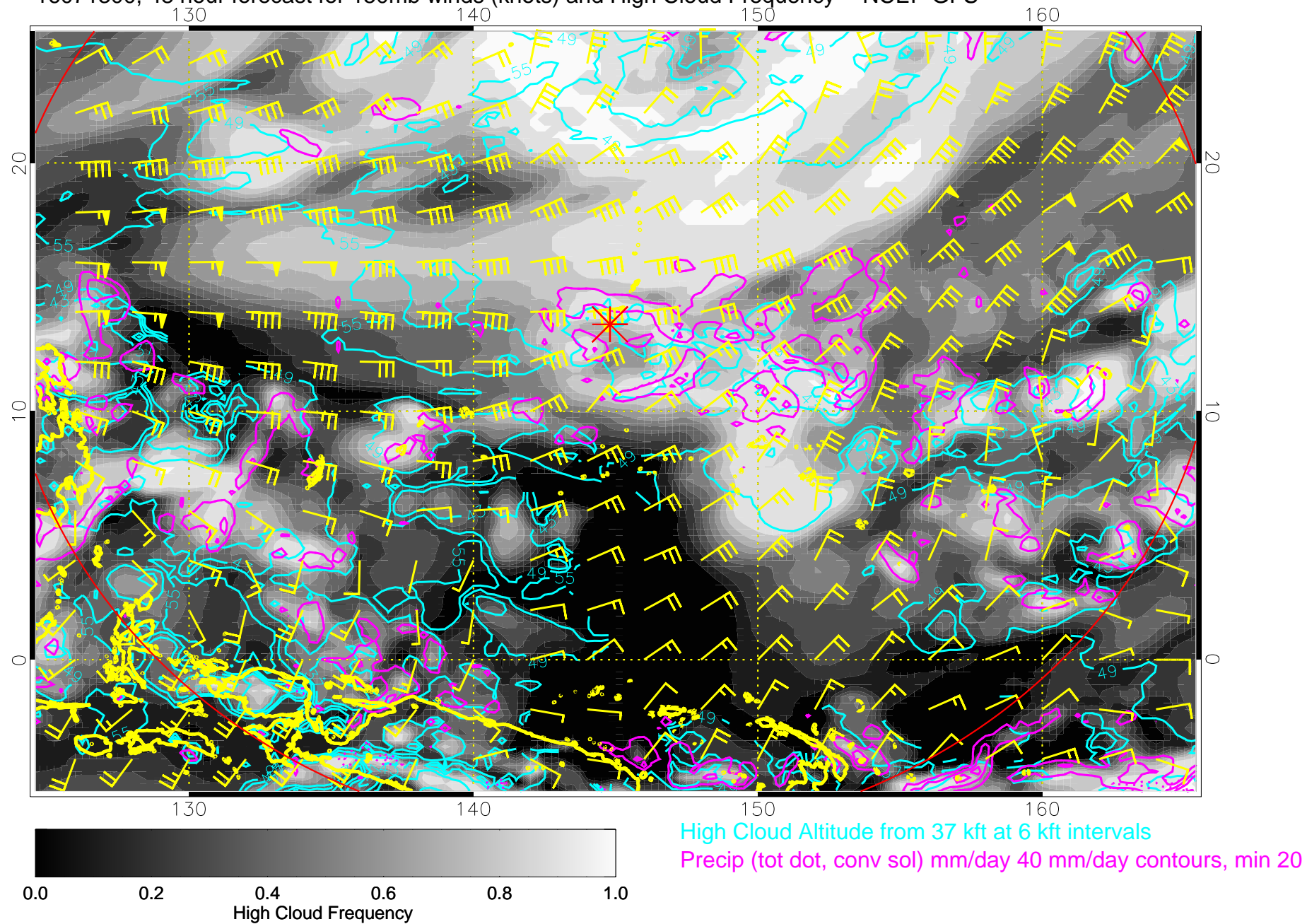




16071218, 42 hour forecast for 150mb winds (knots) and High Cloud Frequency -- NCEP GFS

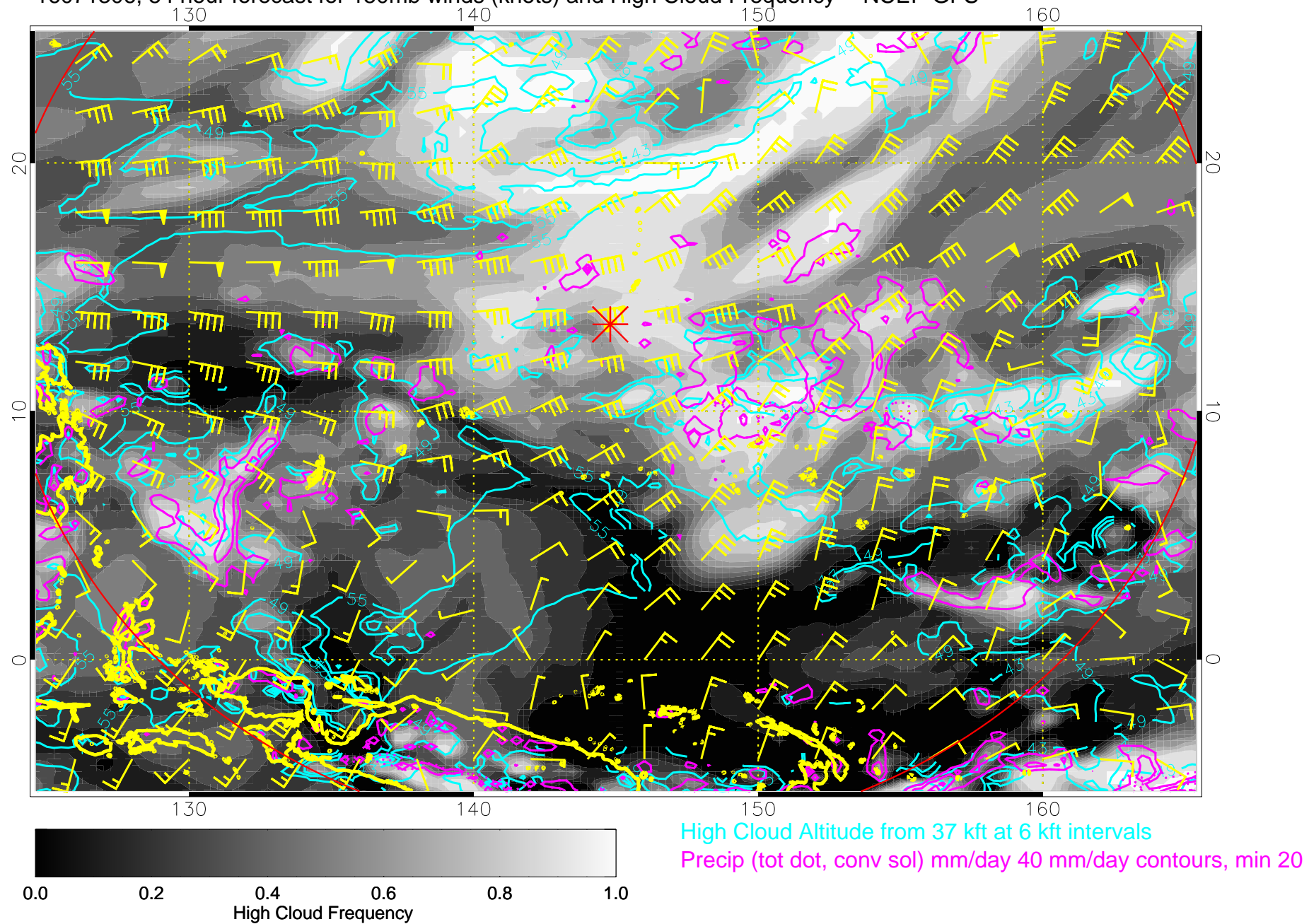


16071300, 48 hour forecast for 150mb winds (knots) and High Cloud Frequency -- NCEP GFS

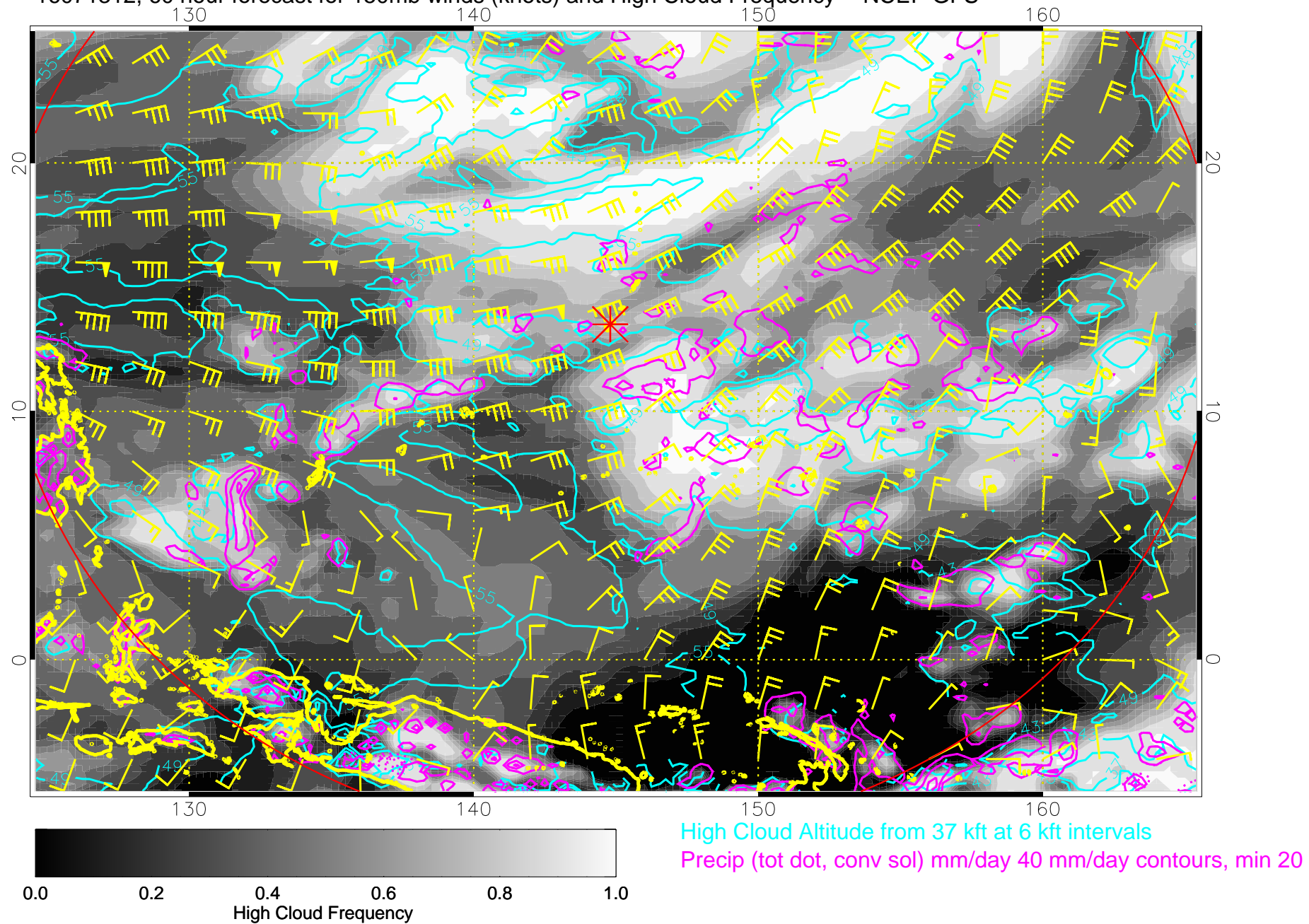




16071306, 54 hour forecast for 150mb winds (knots) and High Cloud Frequency -- NCEP GFS

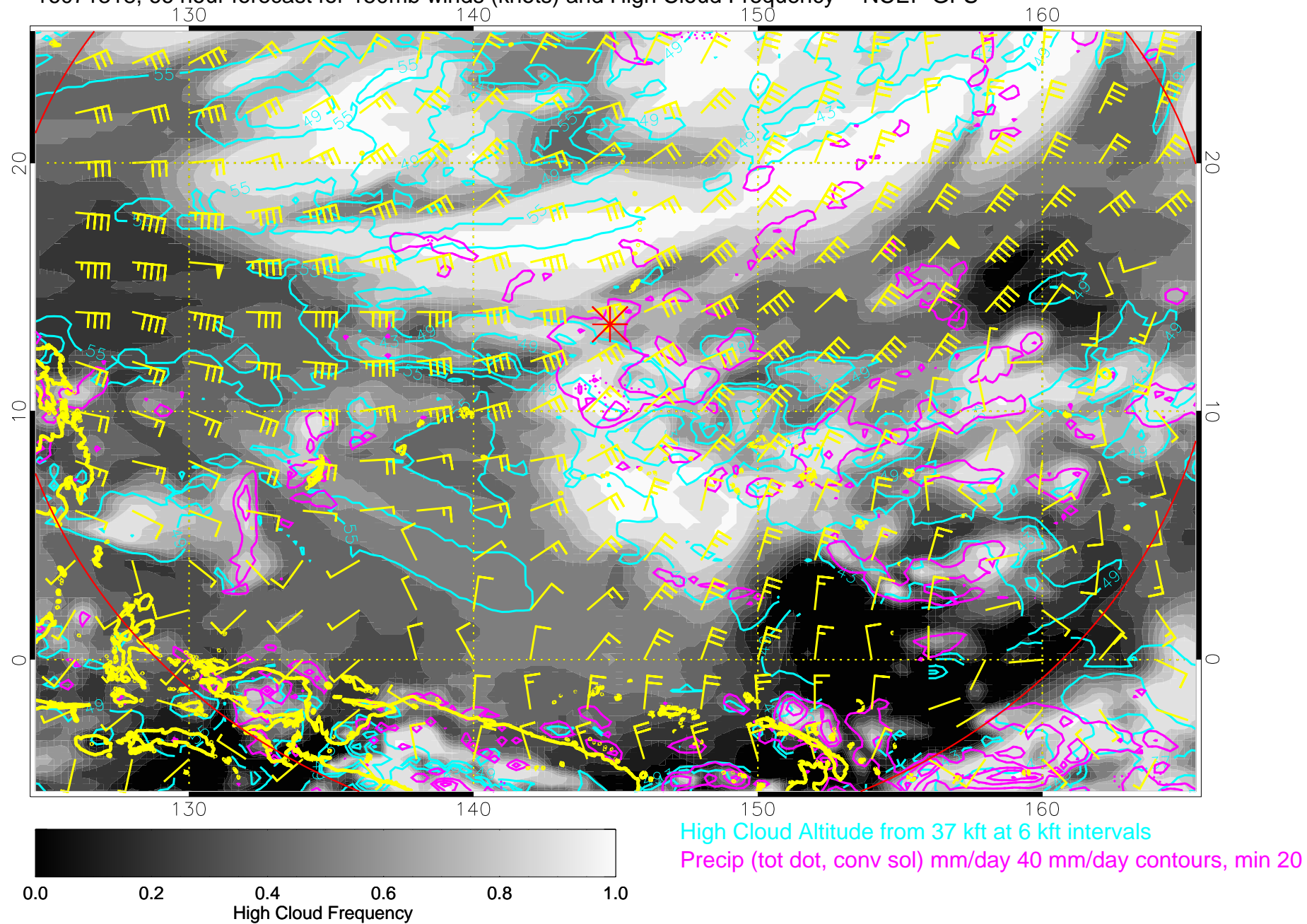


16071312, 60 hour forecast for 150mb winds (knots) and High Cloud Frequency -- NCEP GFS

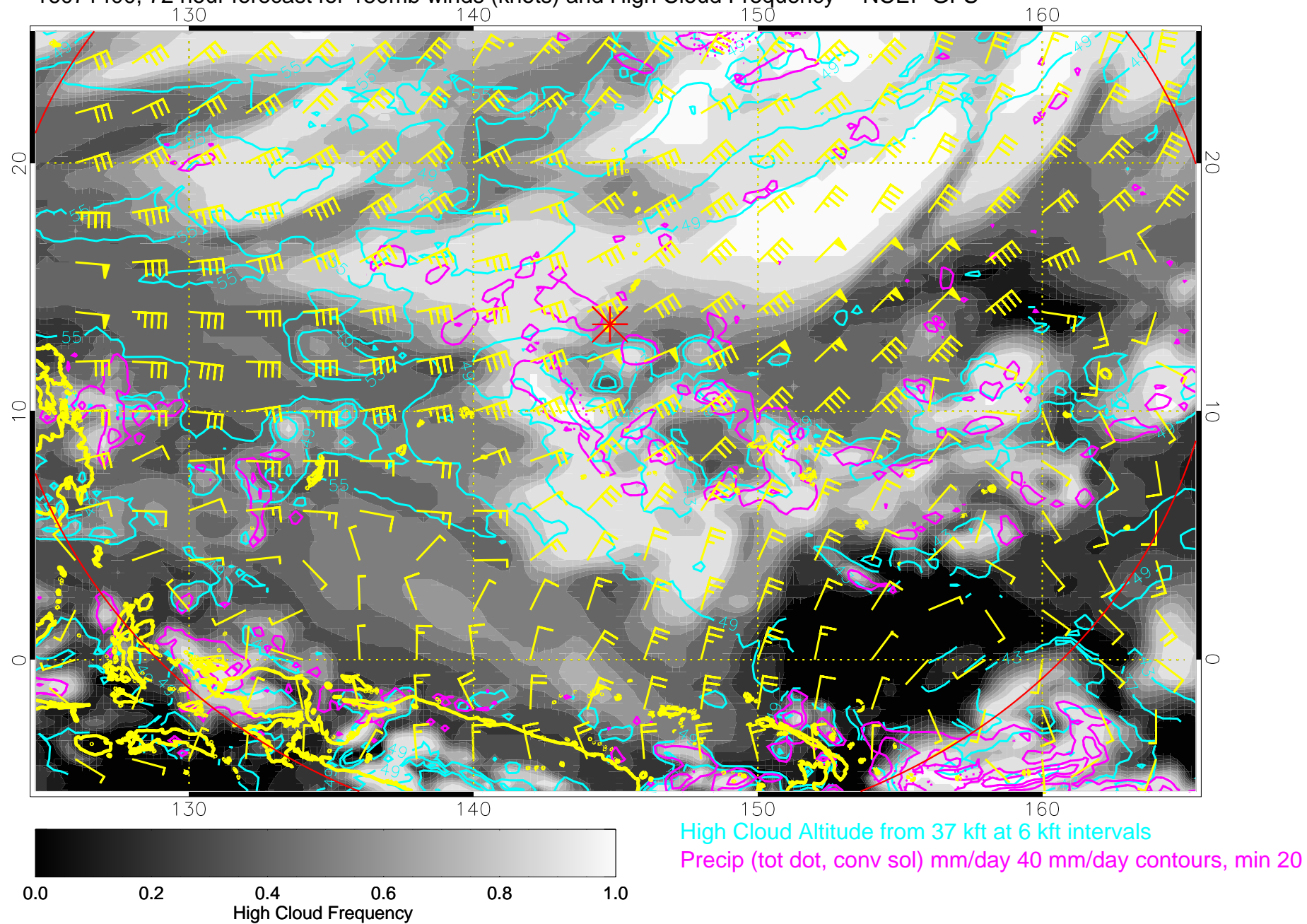




16071318, 66 hour forecast for 150mb winds (knots) and High Cloud Frequency -- NCEP GFS

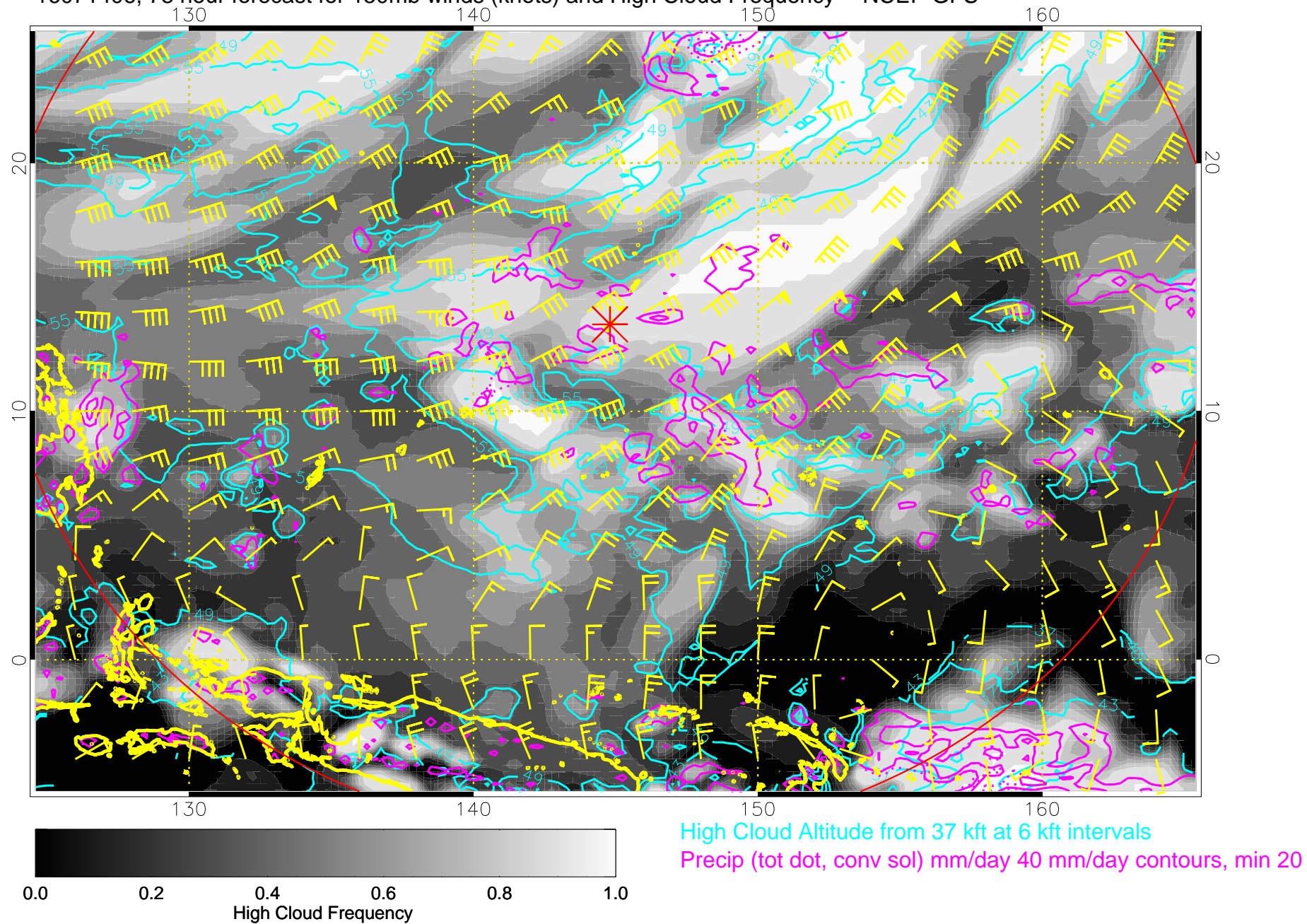


16071400, 72 hour forecast for 150mb winds (knots) and High Cloud Frequency -- NCEP GFS

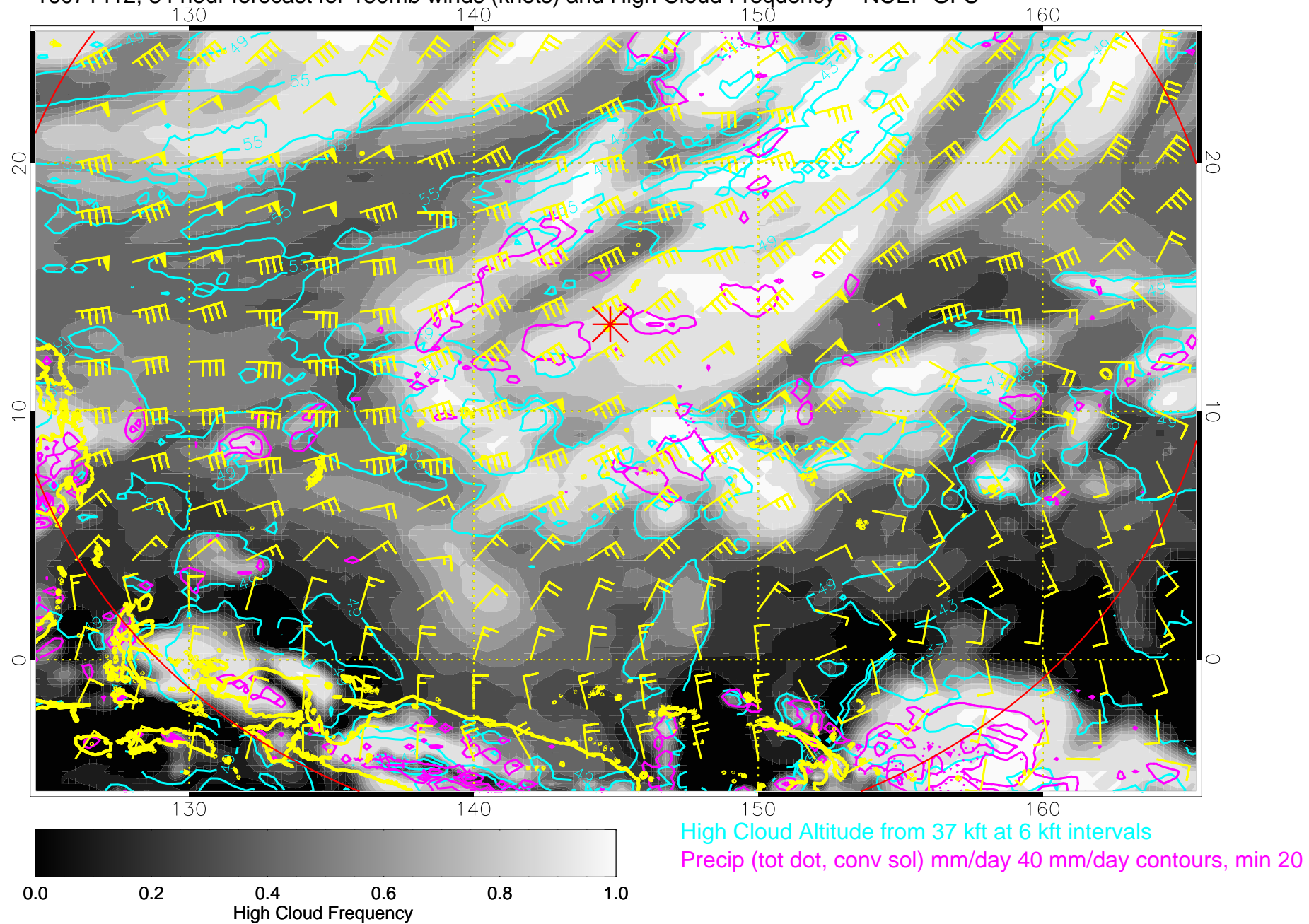




16071406, 78 hour forecast for 150mb winds (knots) and High Cloud Frequency -- NCEP GFS

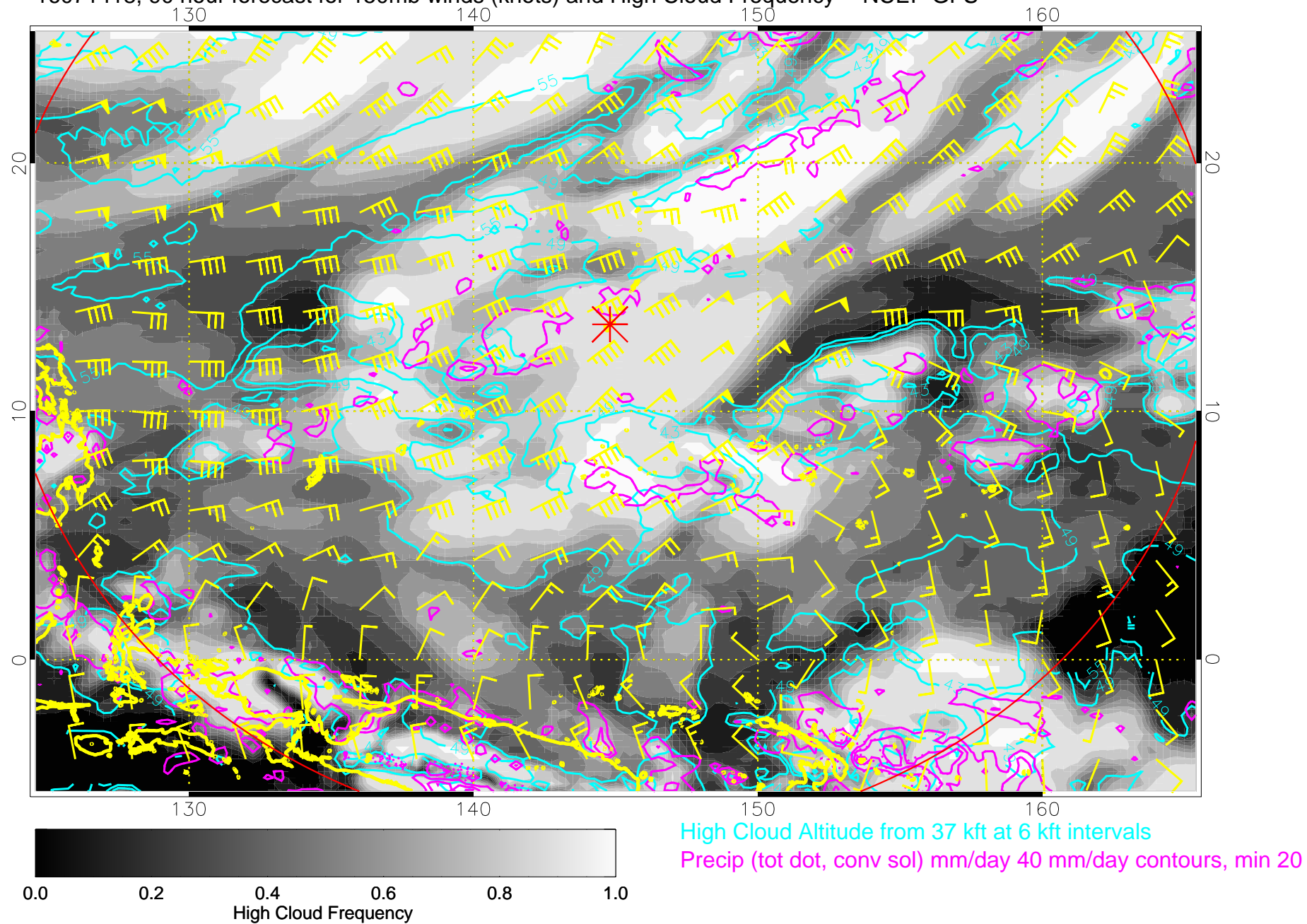


16071412, 84 hour forecast for 150mb winds (knots) and High Cloud Frequency -- NCEP GFS

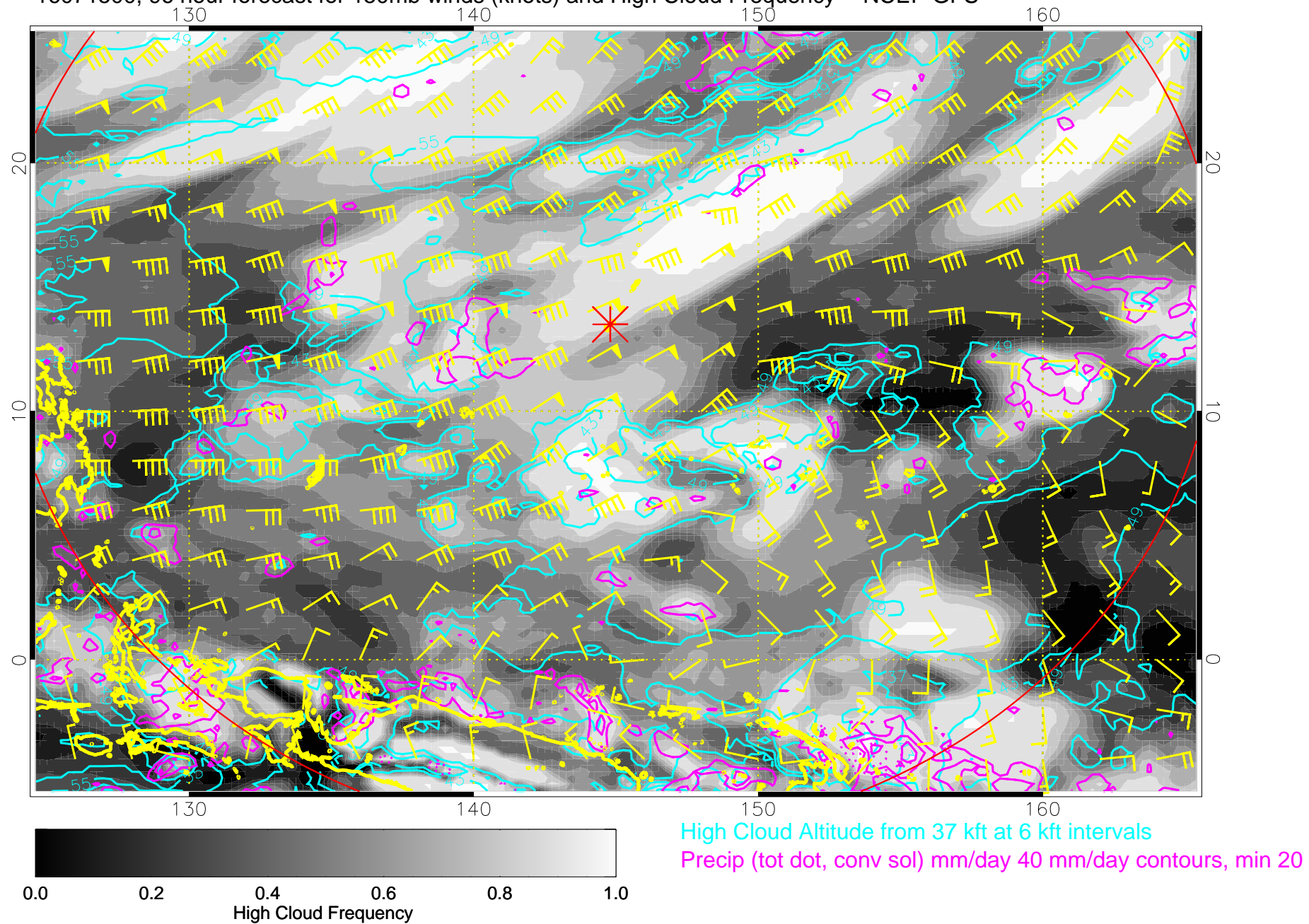




16071418, 90 hour forecast for 150mb winds (knots) and High Cloud Frequency -- NCEP GFS

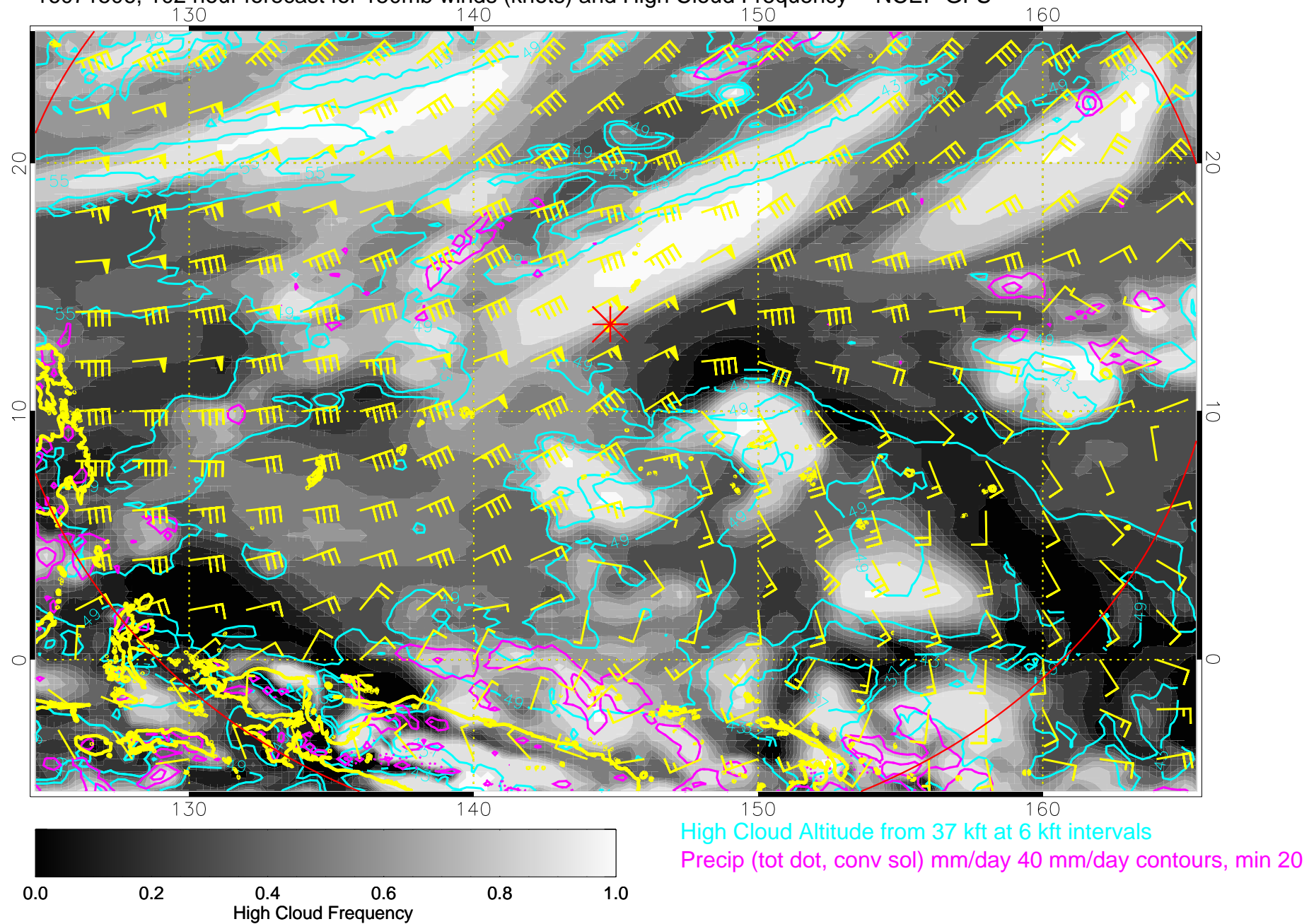


16071500, 96 hour forecast for 150mb winds (knots) and High Cloud Frequency -- NCEP GFS

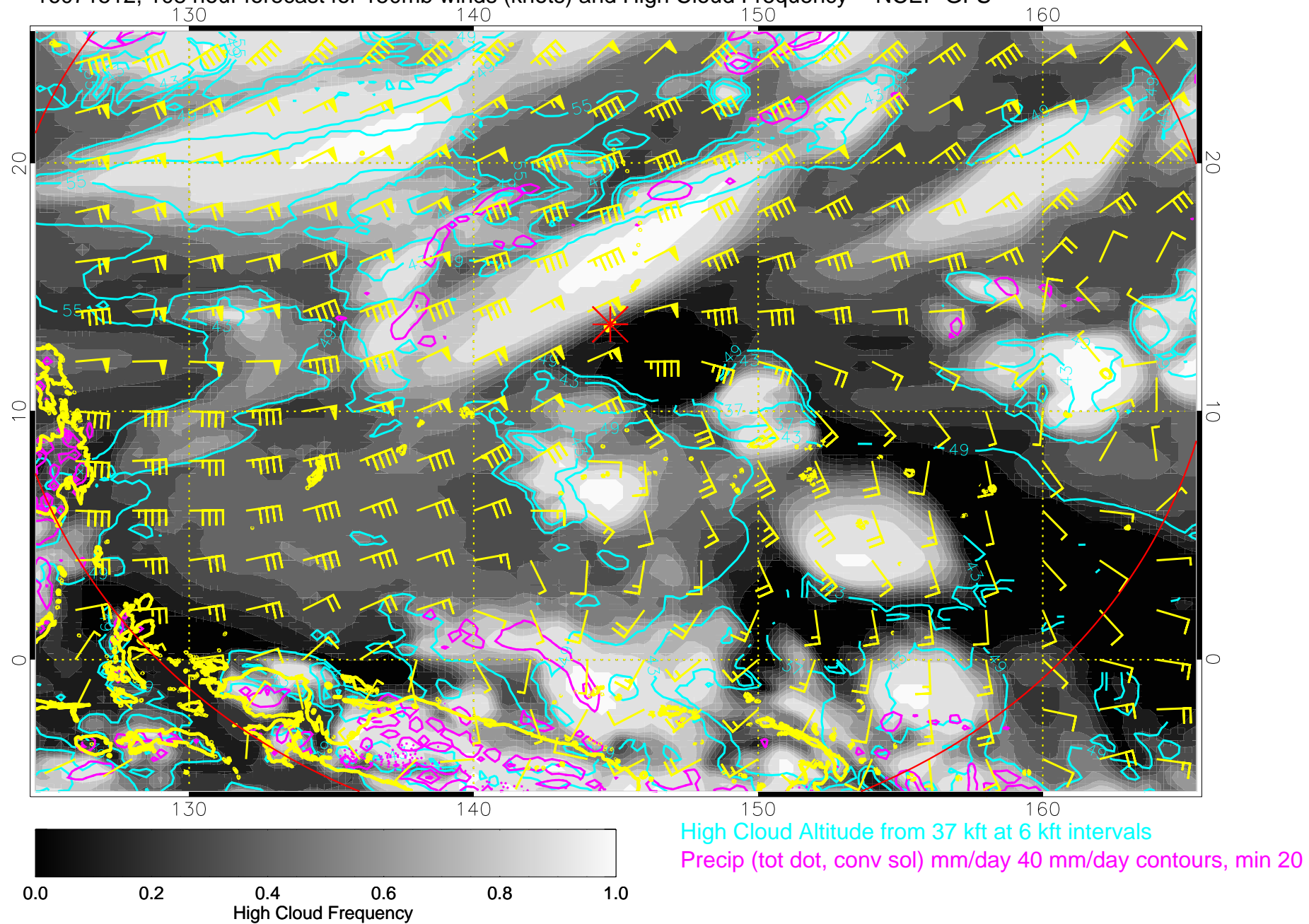




16071506, 102 hour forecast for 150mb winds (knots) and High Cloud Frequency -- NCEP GFS

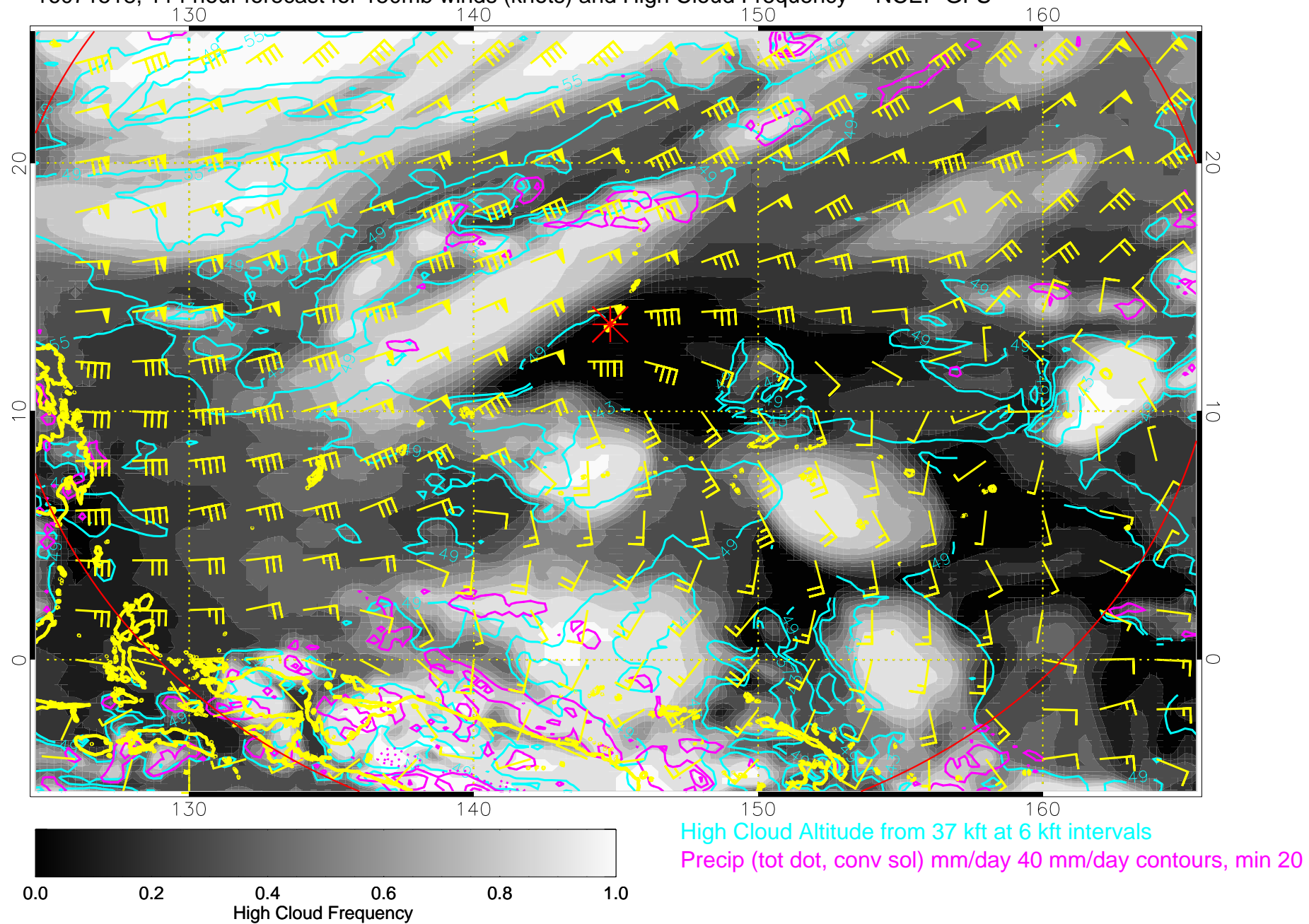


16071512, 108 hour forecast for 150mb winds (knots) and High Cloud Frequency -- NCEP GFS





16071518, 114 hour forecast for 150mb winds (knots) and High Cloud Frequency -- NCEP GFS



16071600, 120 hour forecast for 150mb winds (knots) and High Cloud Frequency -- NCEP GFS

