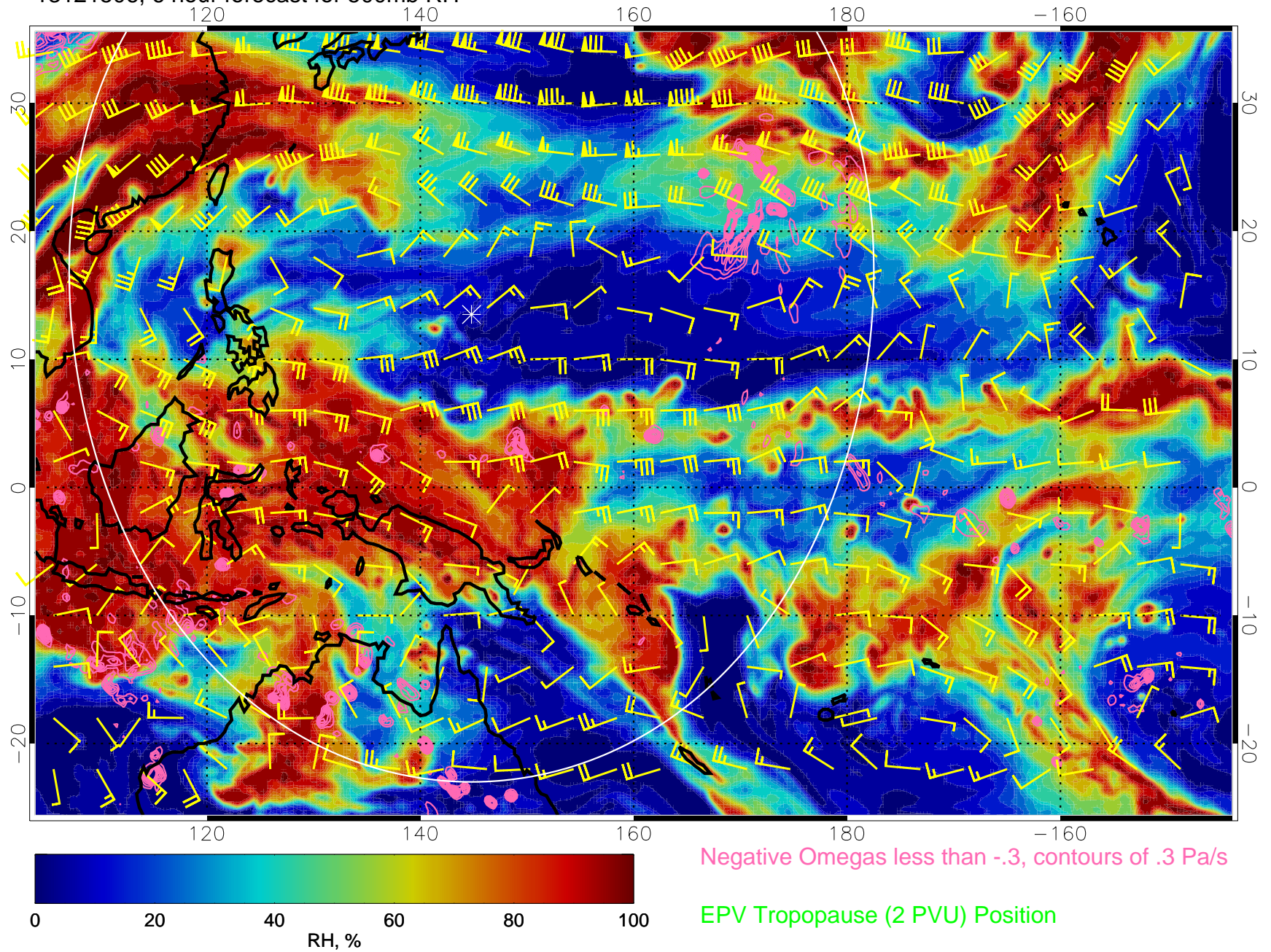
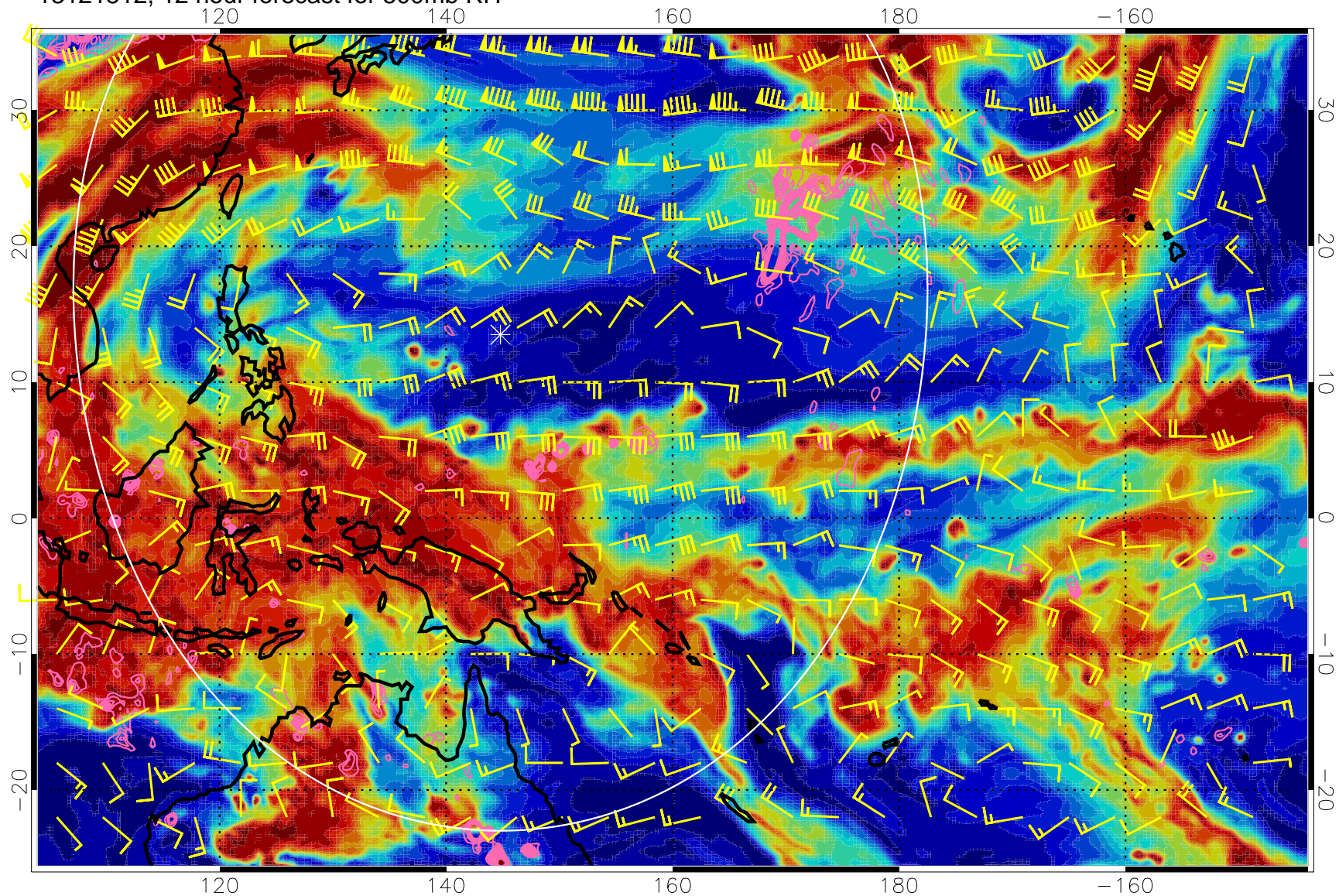


13121506, 6 hour forecast for 500mb RH



13121512, 12 hour forecast for 500mb RH

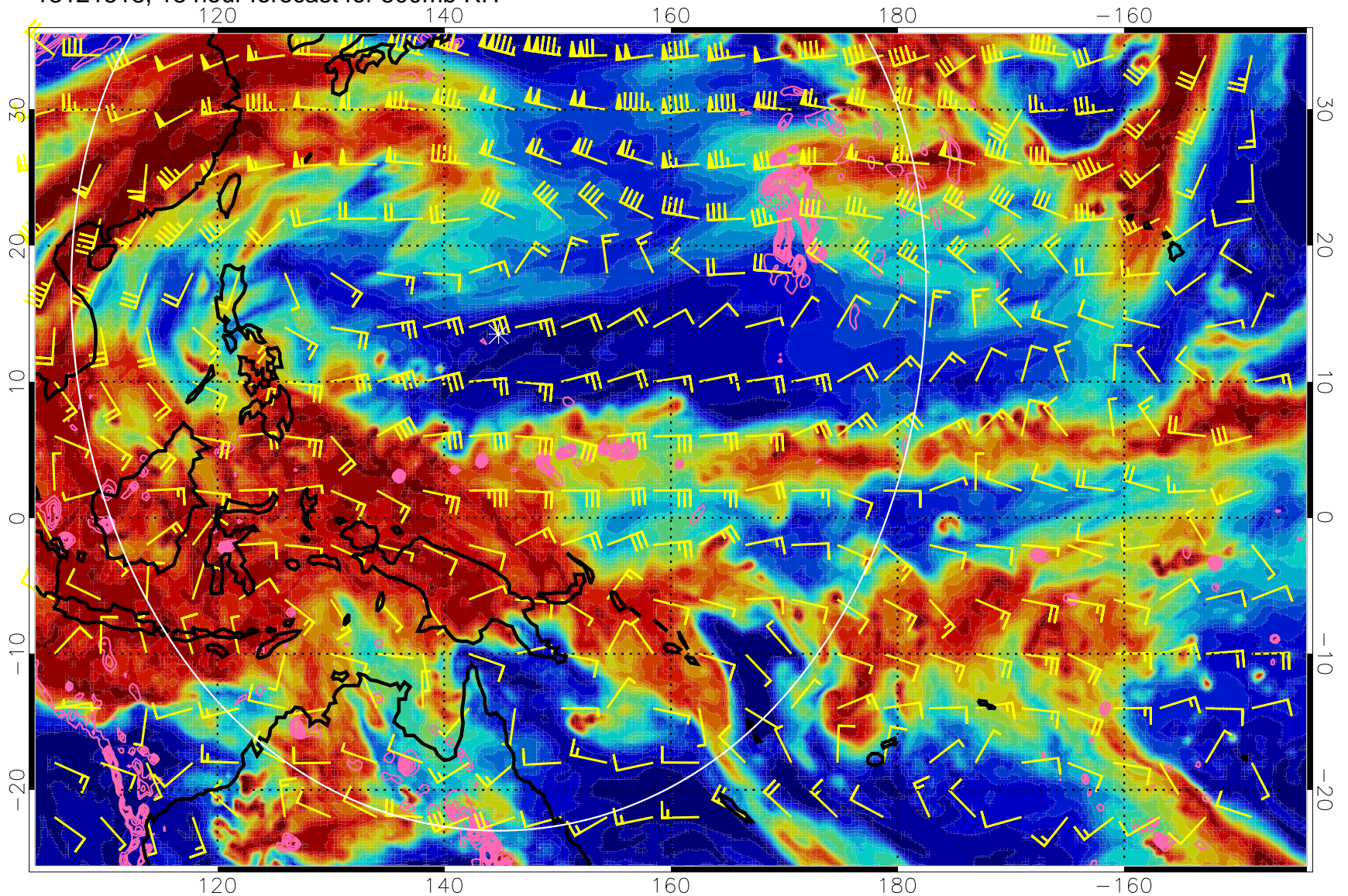


0 20 40 60 80 100
RH, %

Negative Omegas less than -0.3 , contours of 0.3 Pa/s

EPV Tropopause (2 PVU) Position

13121518, 18 hour forecast for 500mb RH

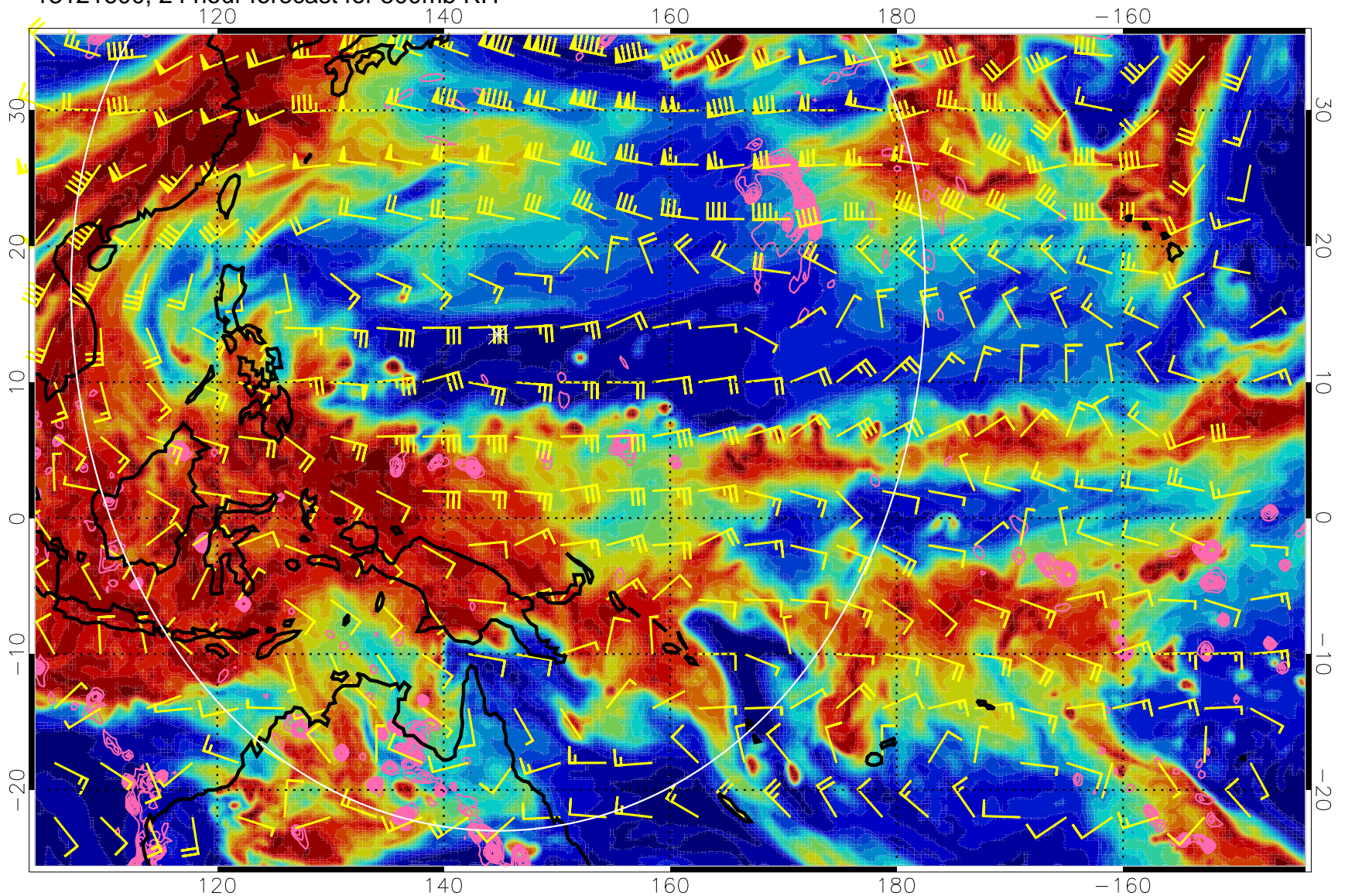


0 20 40 60 80 100
RH, %

Negative Omegas less than -0.3 , contours of 0.3 Pa/s

EPV Tropopause (2 PVU) Position

13121600, 24 hour forecast for 500mb RH

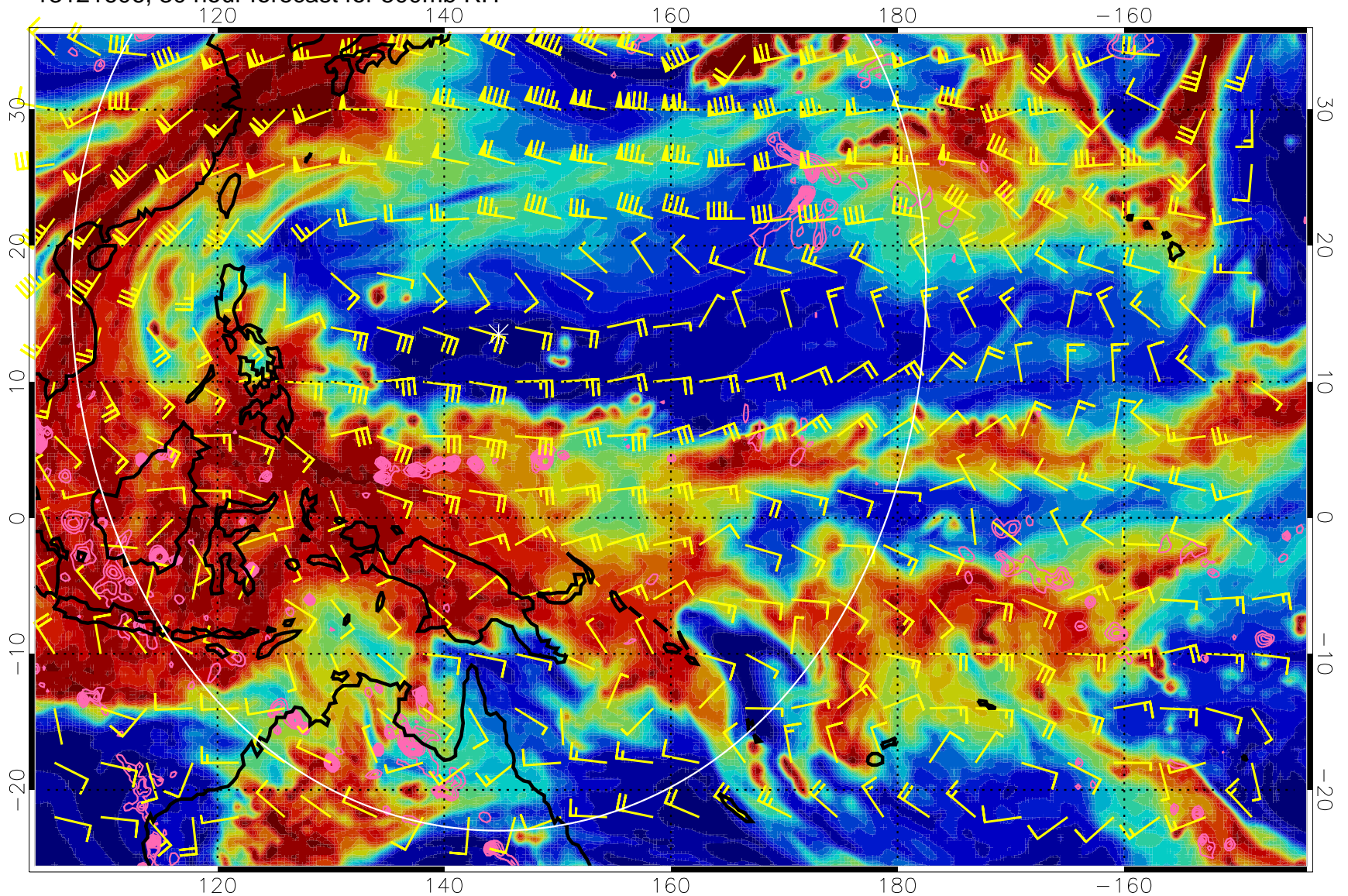


0 20 40 60 80 100
RH, %

Negative Omegas less than -0.3 , contours of 0.3 Pa/s

EPV Tropopause (2 PVU) Position

13121606, 30 hour forecast for 500mb RH

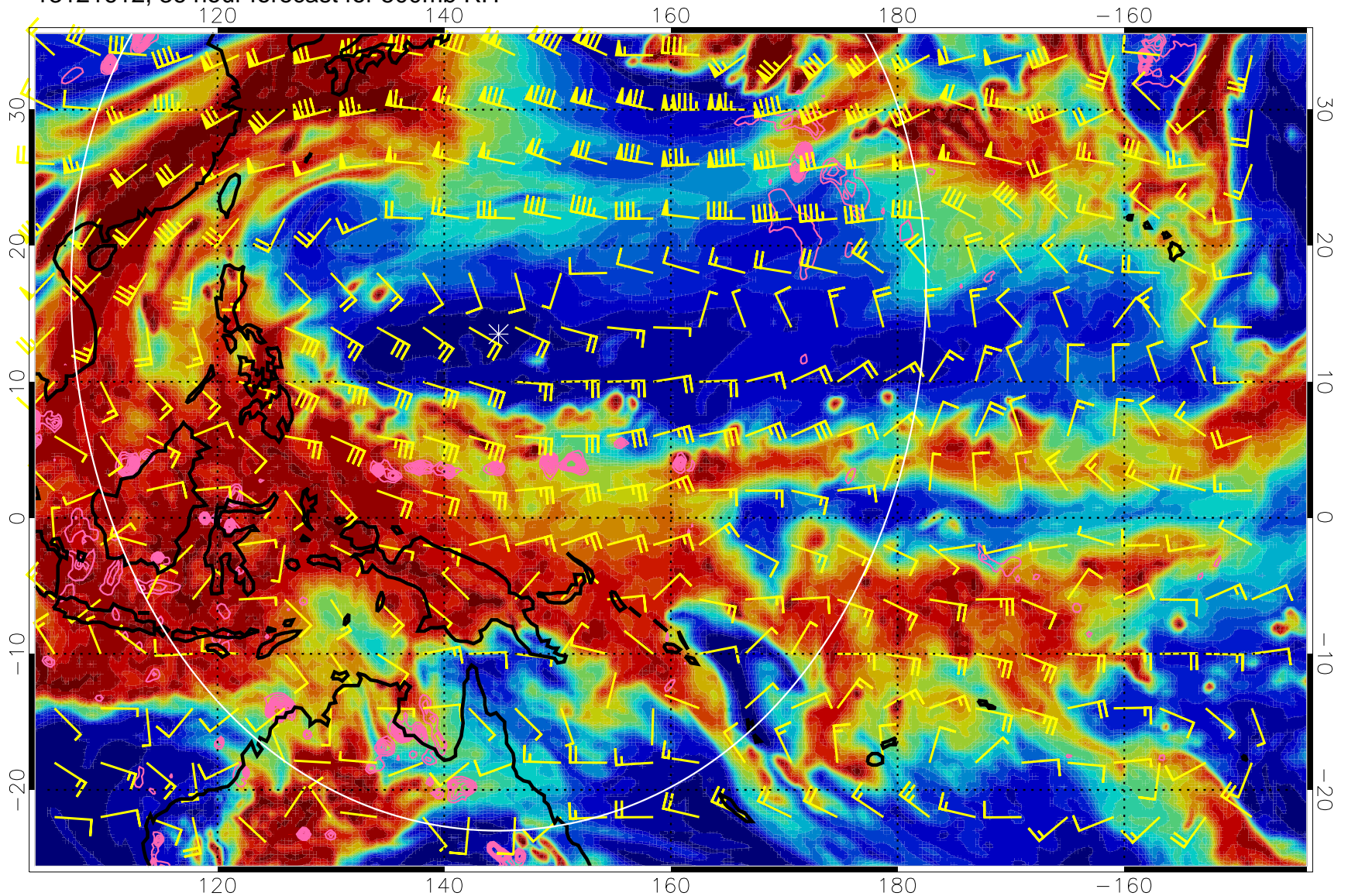


0 20 40 60 80 100
RH, %

Negative Omegas less than $-.3$, contours of $.3$ Pa/s

EPV Tropopause (2 PVU) Position

13121612, 36 hour forecast for 500mb RH

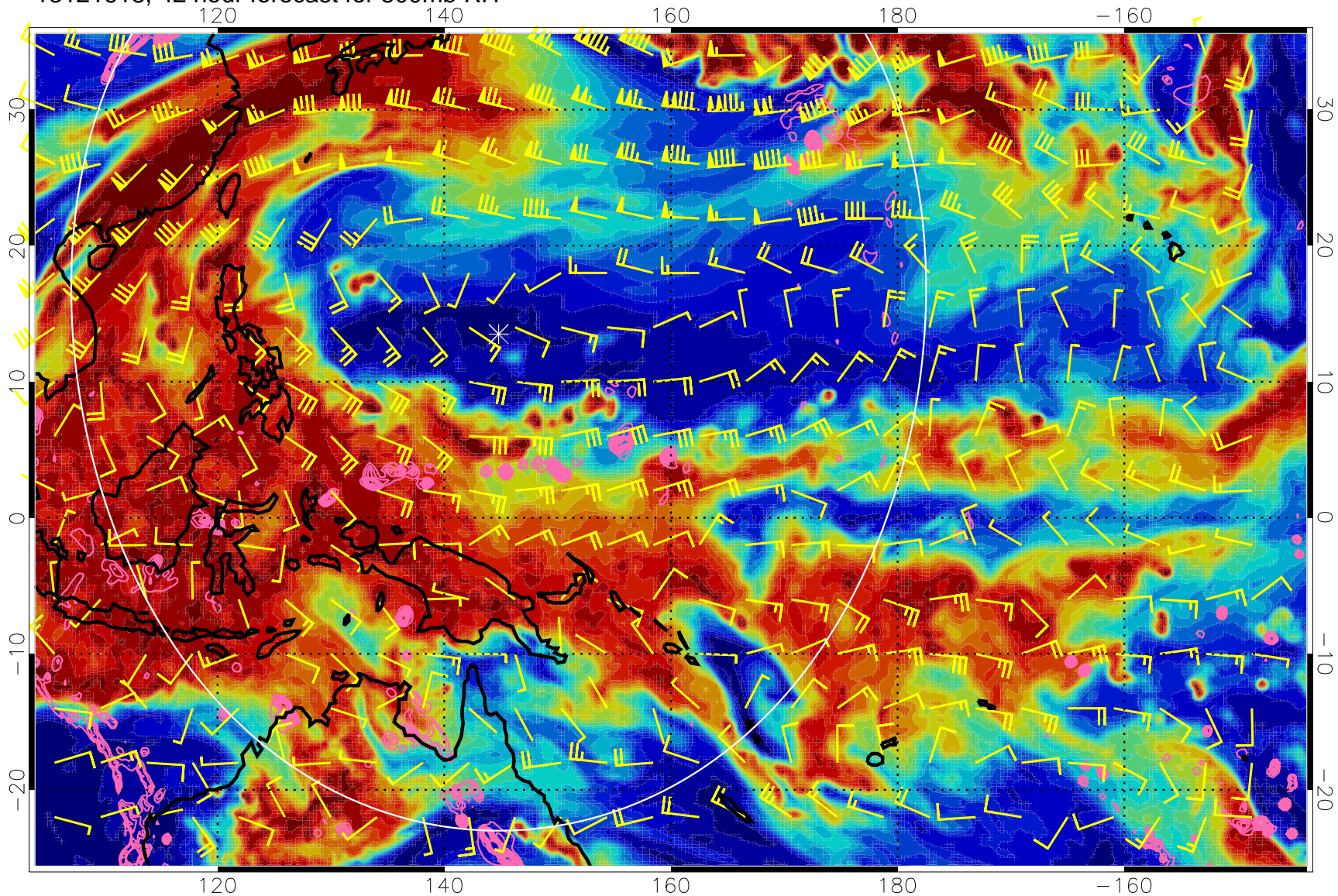


0 20 40 60 80 100
RH, %

Negative Omegas less than $-.3$, contours of $.3$ Pa/s

EPV Tropopause (2 PVU) Position

13121618, 42 hour forecast for 500mb RH

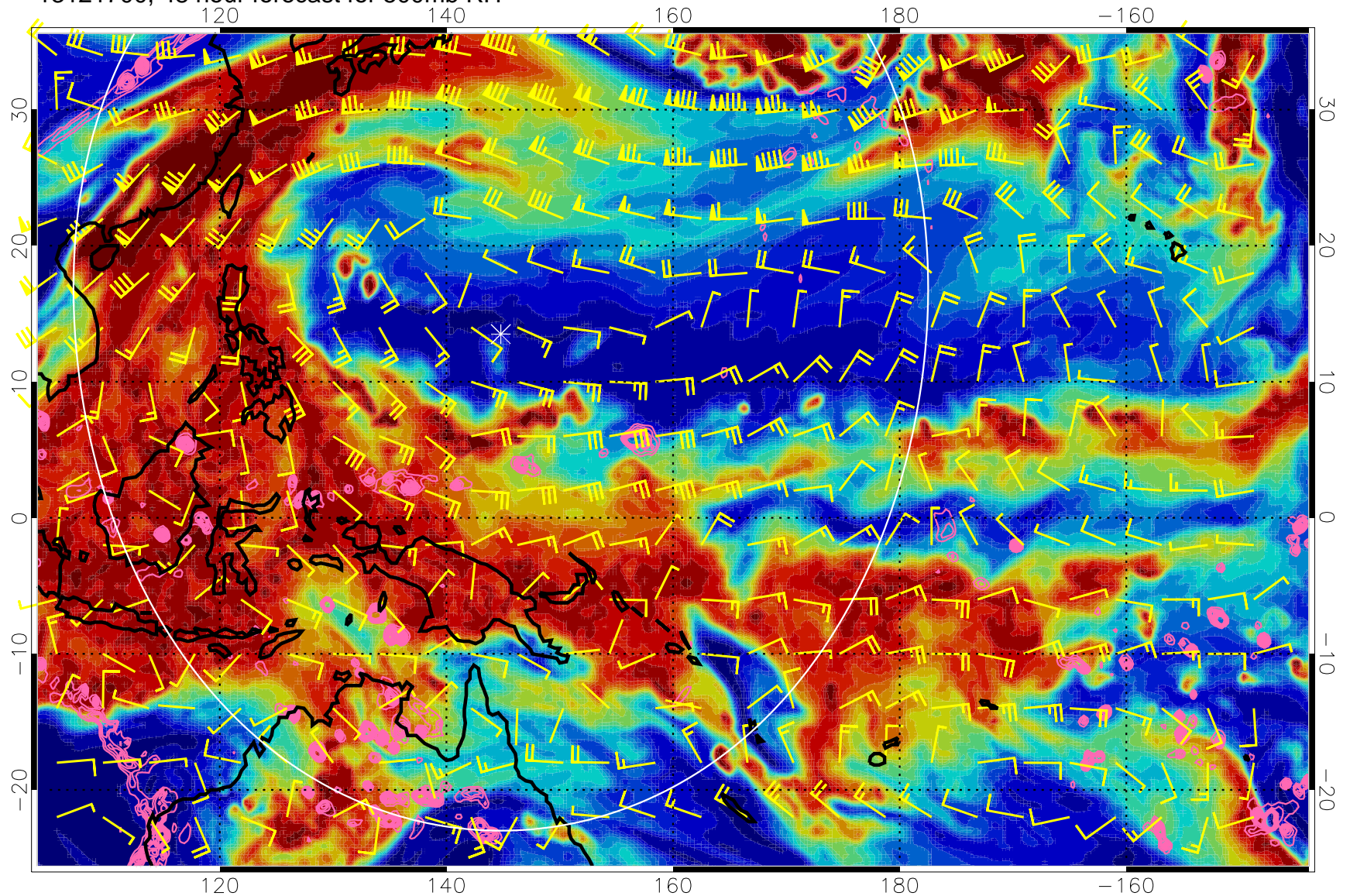


0 20 40 60 80 100
RH, %

Negative Omegas less than -0.3 , contours of 0.3 Pa/s

EPV Tropopause (2 PVU) Position

13121700, 48 hour forecast for 500mb RH

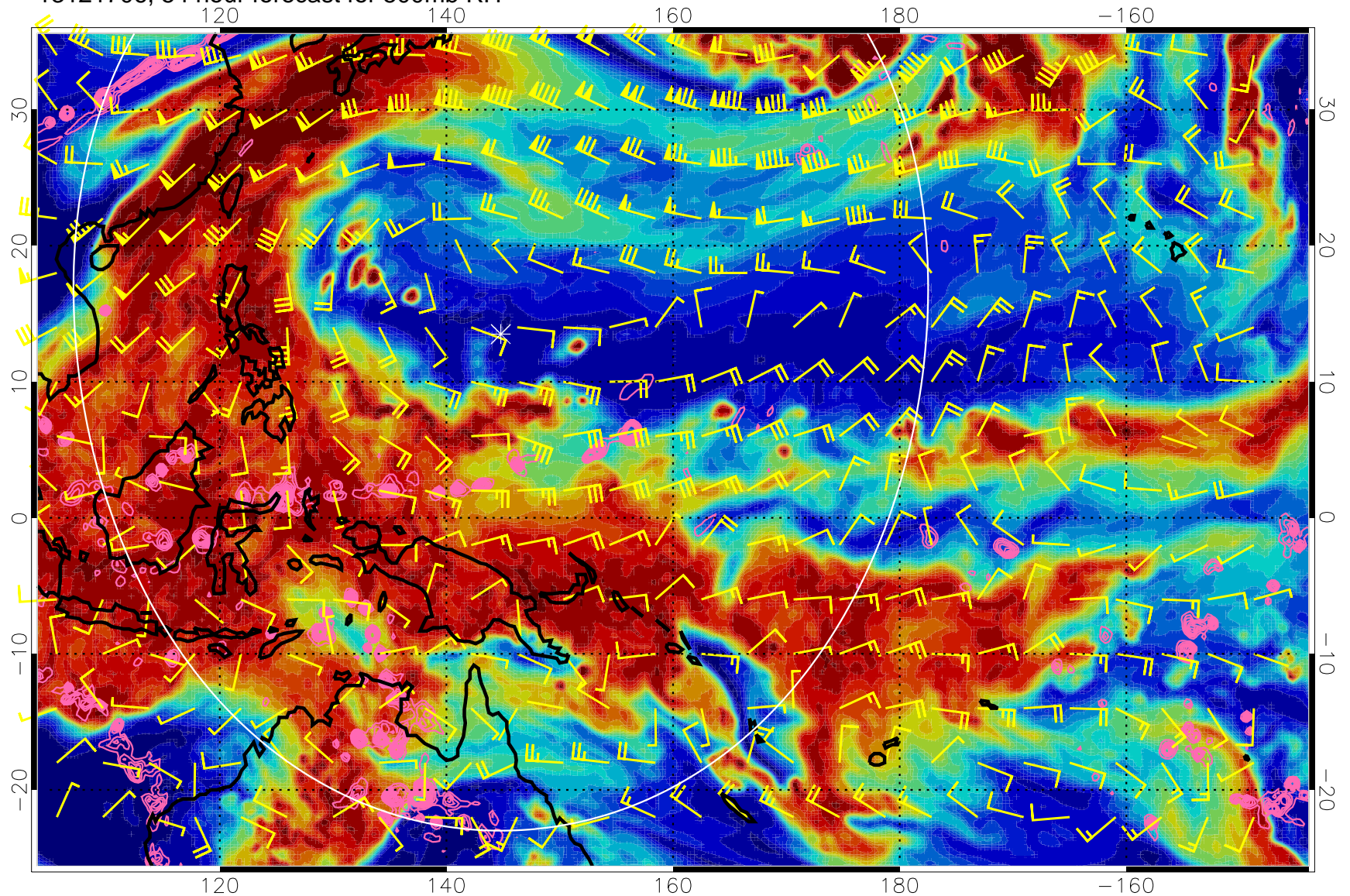


0 20 40 60 80 100
RH, %

Negative Omegas less than -0.3 , contours of 0.3 Pa/s

EPV Tropopause (2 PVU) Position

13121706, 54 hour forecast for 500mb RH

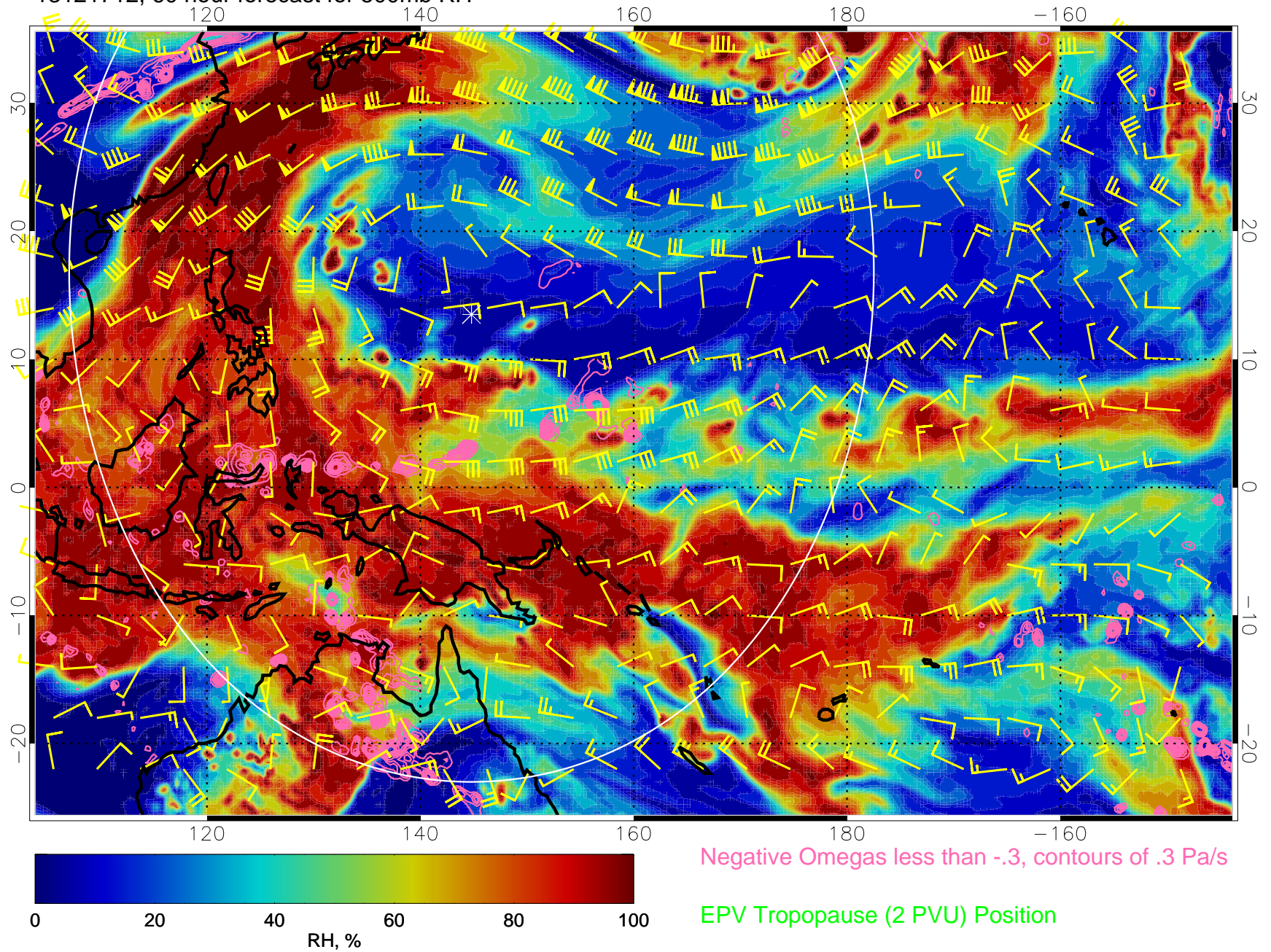


0 20 40 60 80 100
RH, %

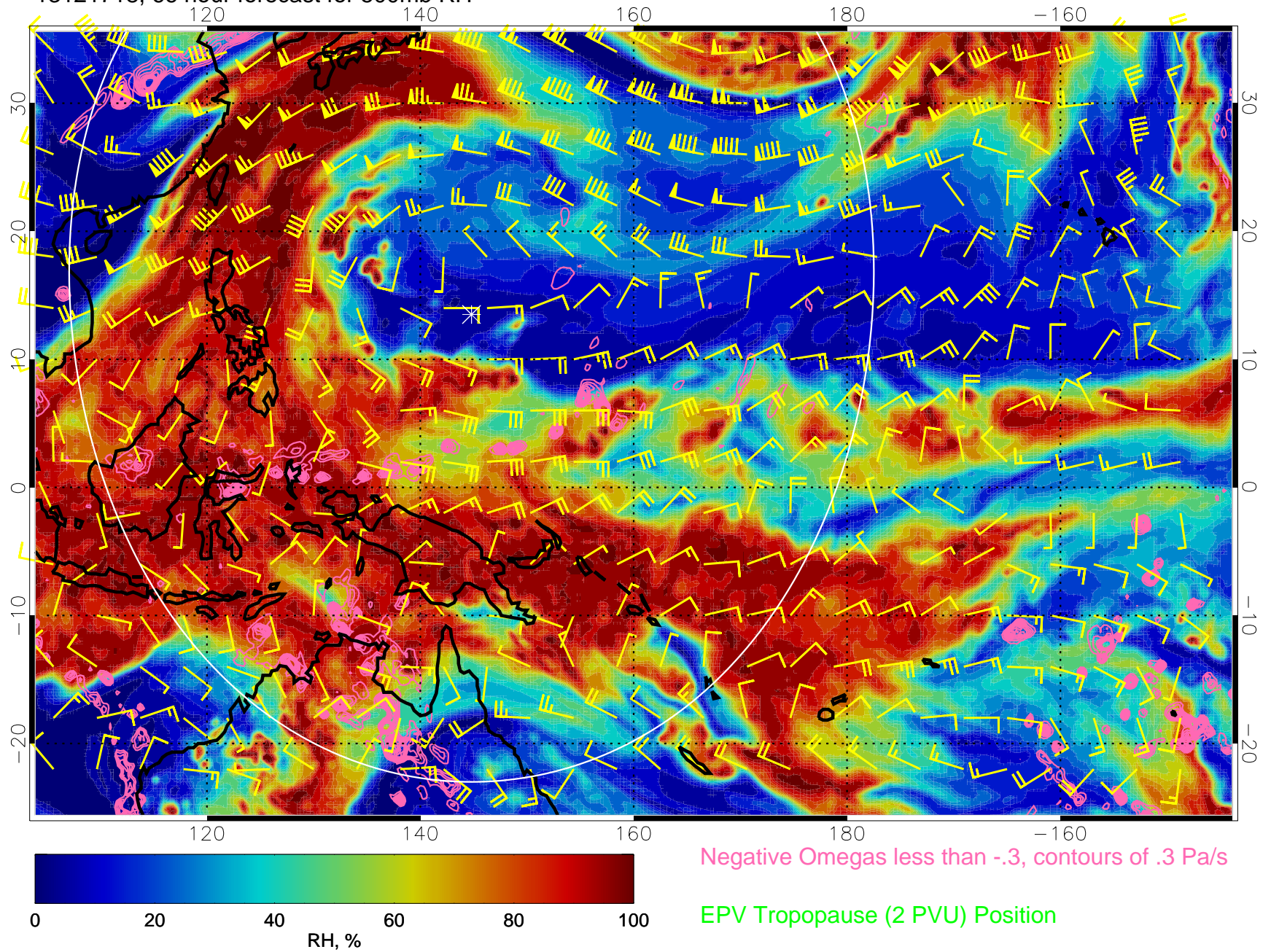
Negative Omegas less than -0.3 , contours of 0.3 Pa/s

EPV Tropopause (2 PVU) Position

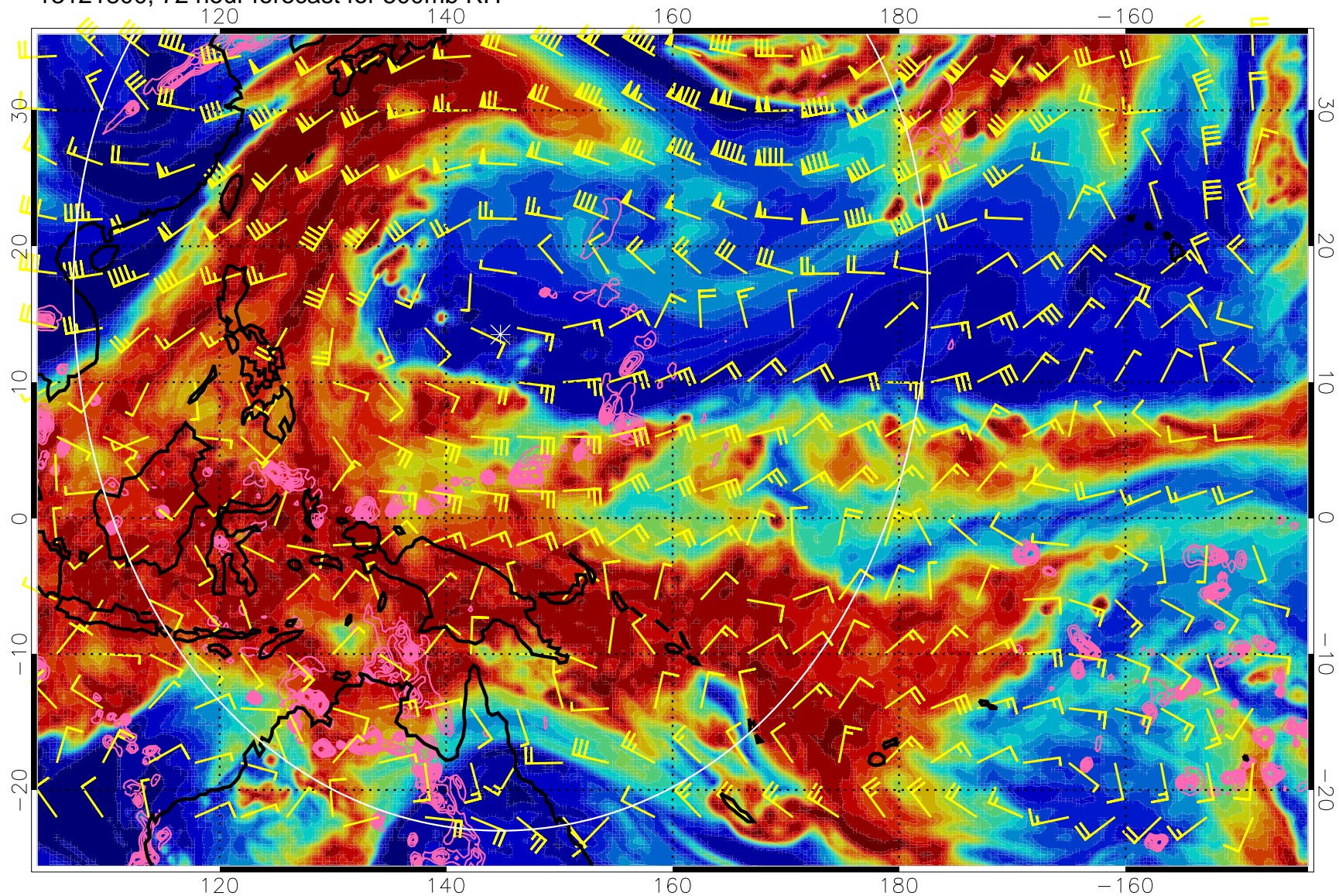
13121712, 60 hour forecast for 500mb RH



13121718, 66 hour forecast for 500mb RH



13121800, 72 hour forecast for 500mb RH

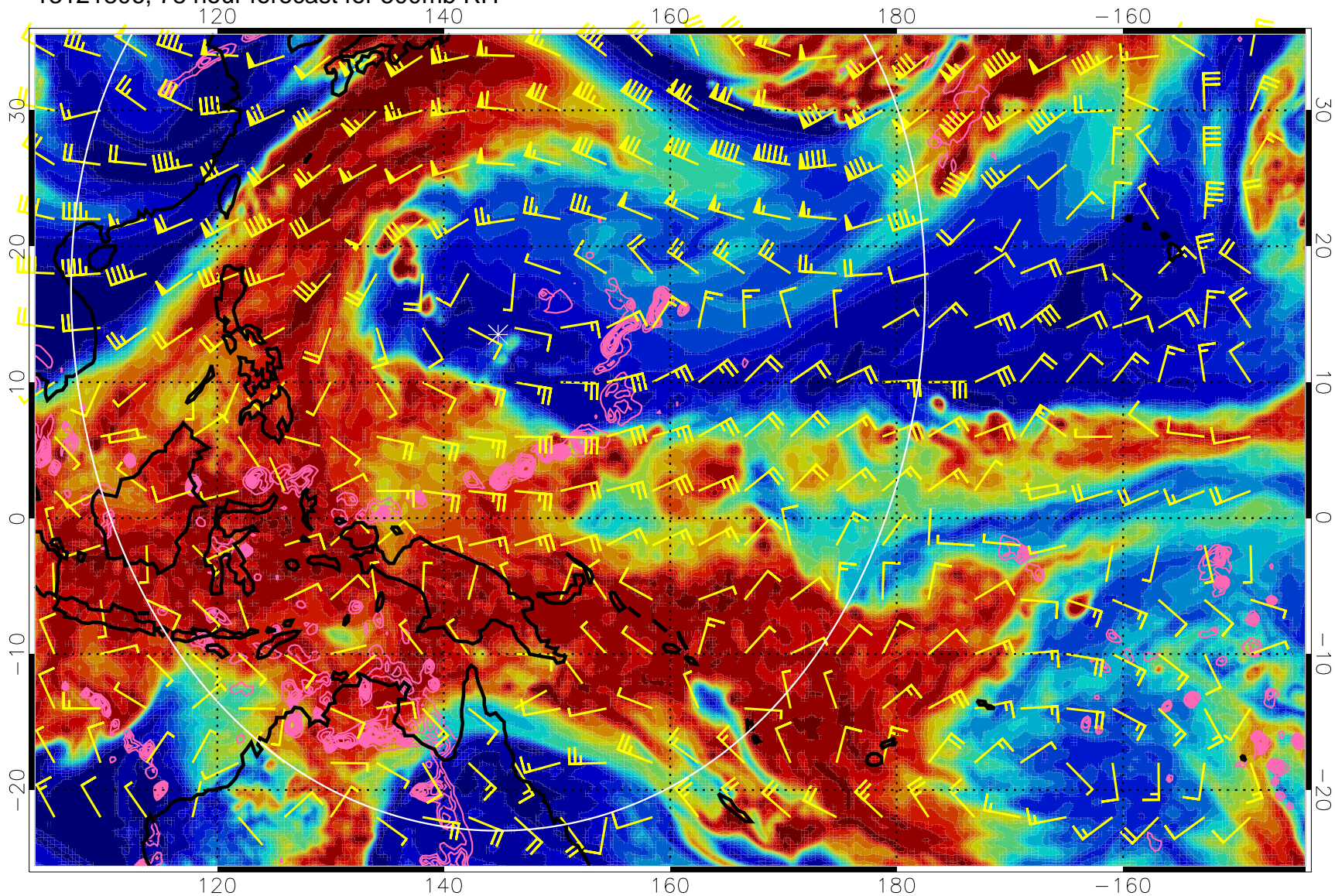


0 20 40 60 80 100
RH, %

Negative Omegas less than -0.3 , contours of 0.3 Pa/s

EPV Tropopause (2 PVU) Position

13121806, 78 hour forecast for 500mb RH

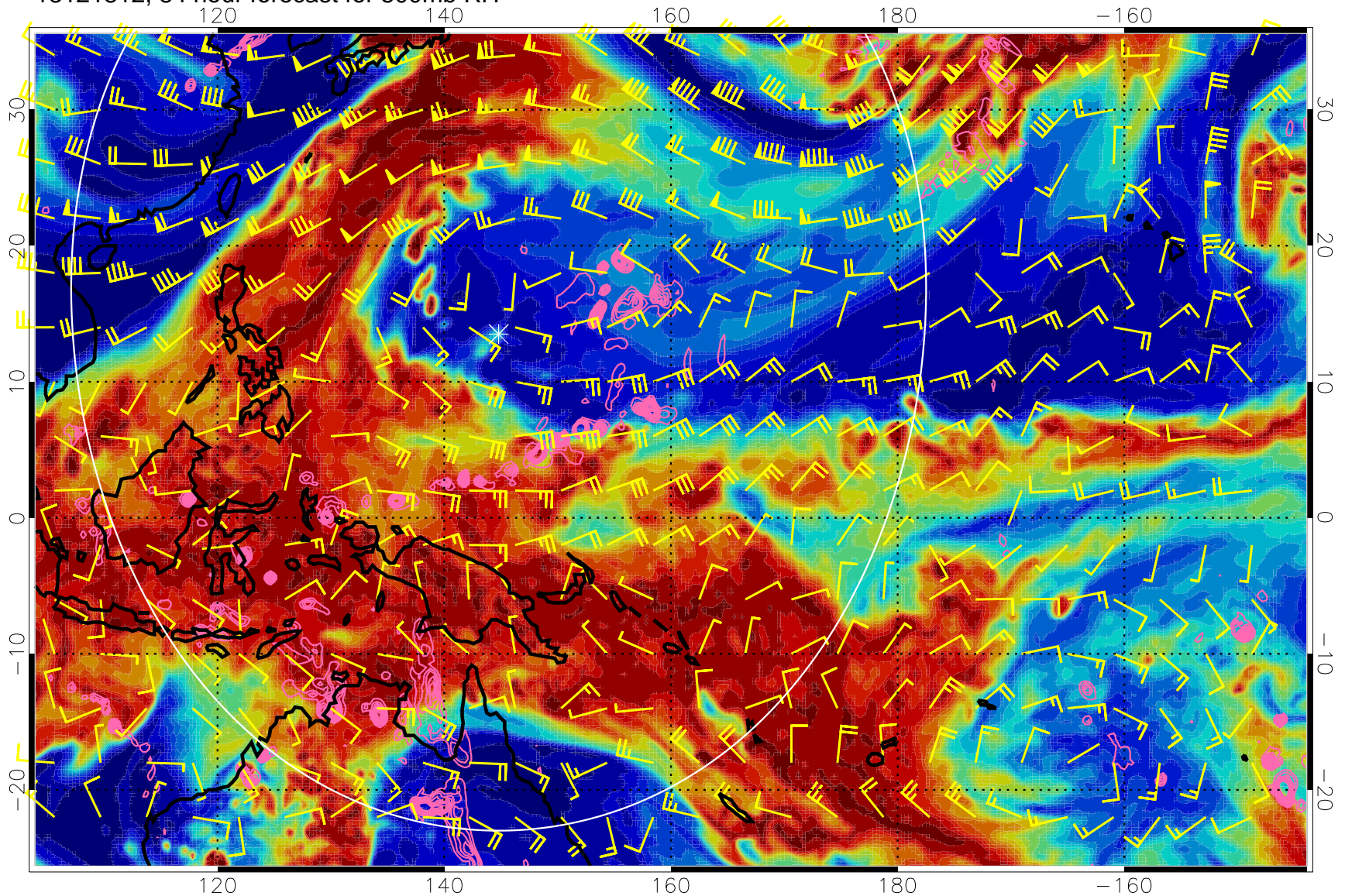


0 20 40 60 80 100
RH, %

Negative Omegas less than -0.3 , contours of 0.3 Pa/s

EPV Tropopause (2 PVU) Position

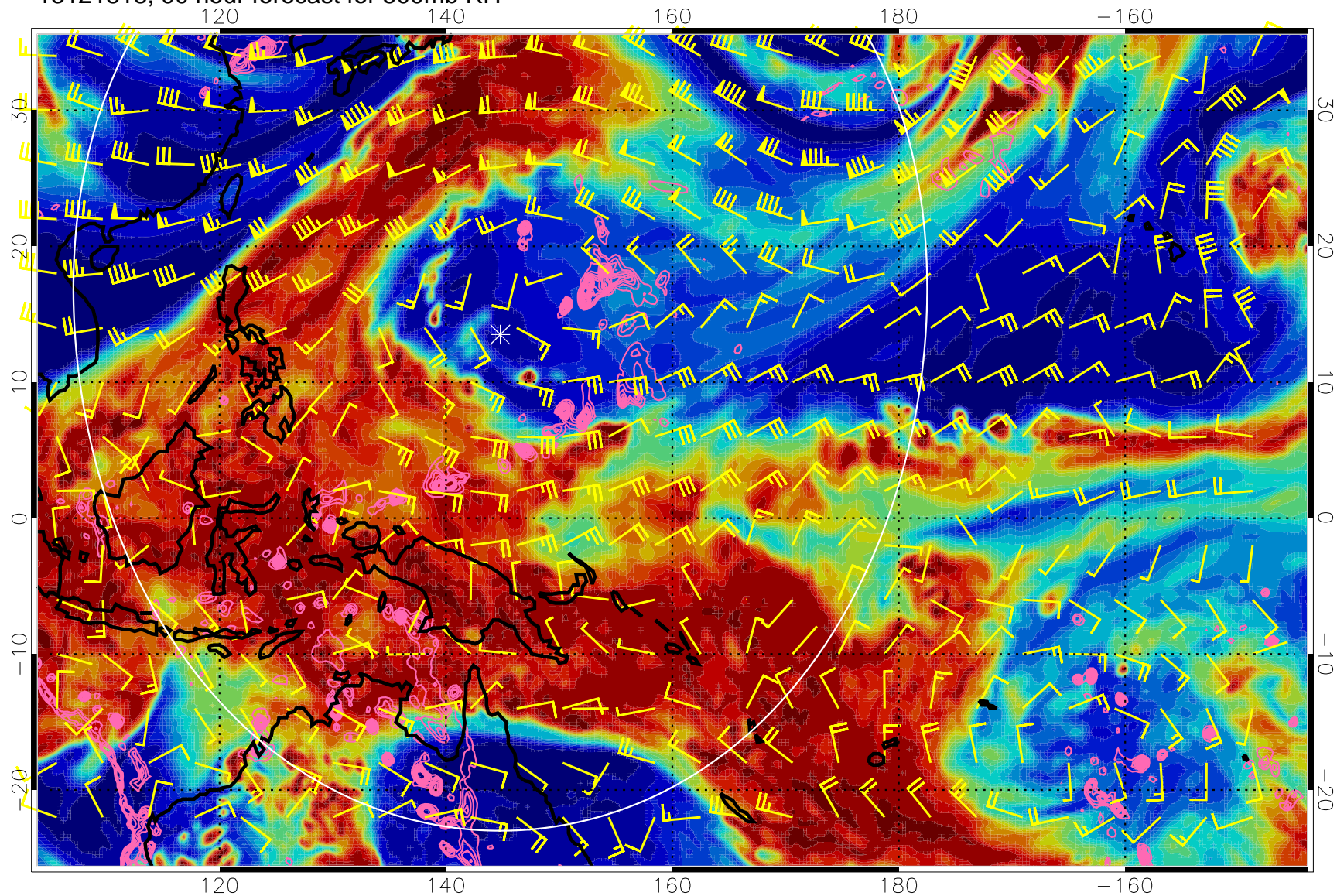
13121812, 84 hour forecast for 500mb RH



Negative Omegas less than -0.3 , contours of 0.3 Pa/s

EPV Tropopause (2 PVU) Position

13121818, 90 hour forecast for 500mb RH

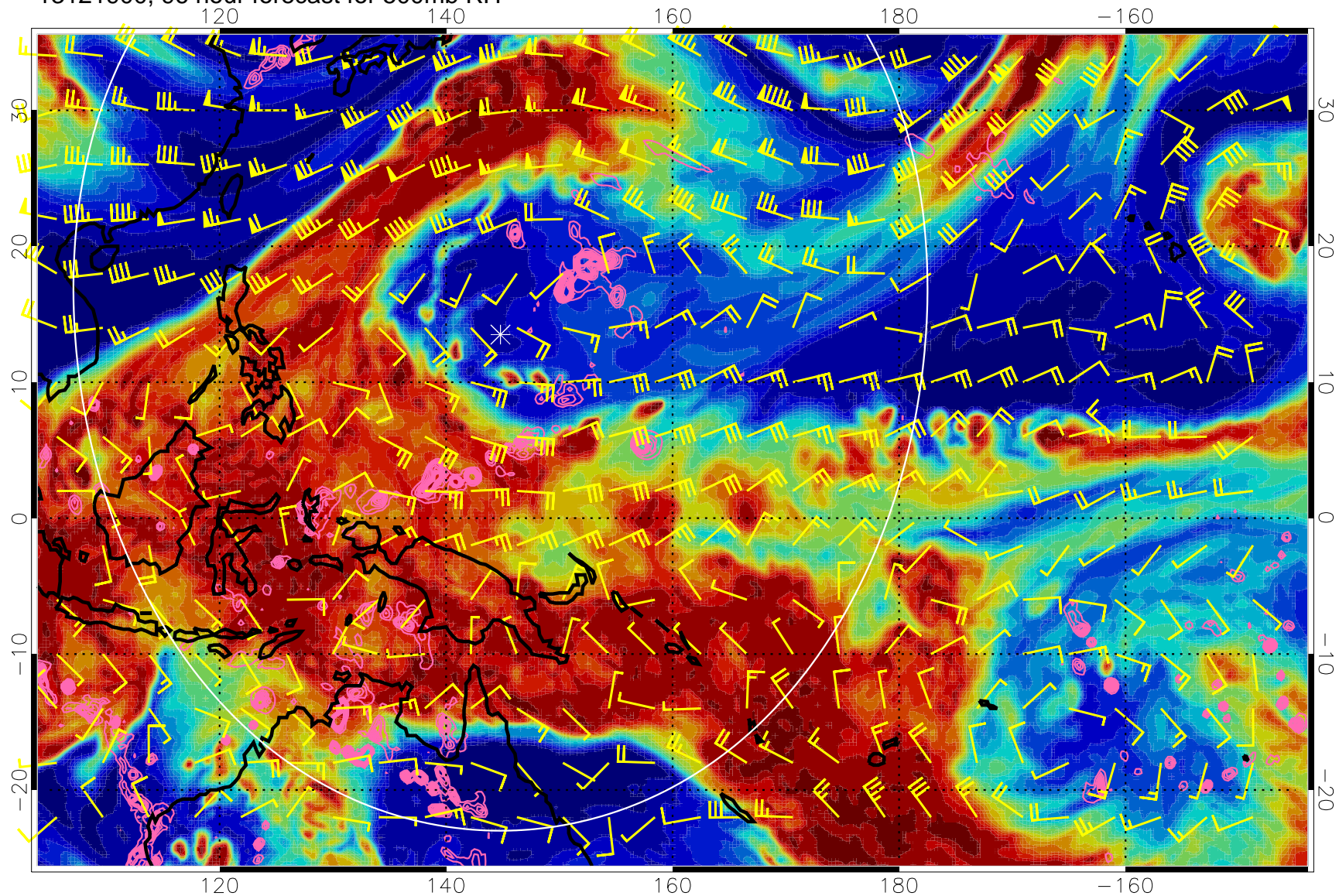


0 20 40 60 80 100
RH, %

Negative Omegas less than -0.3 , contours of 0.3 Pa/s

EPV Tropopause (2 PVU) Position

13121900, 96 hour forecast for 500mb RH

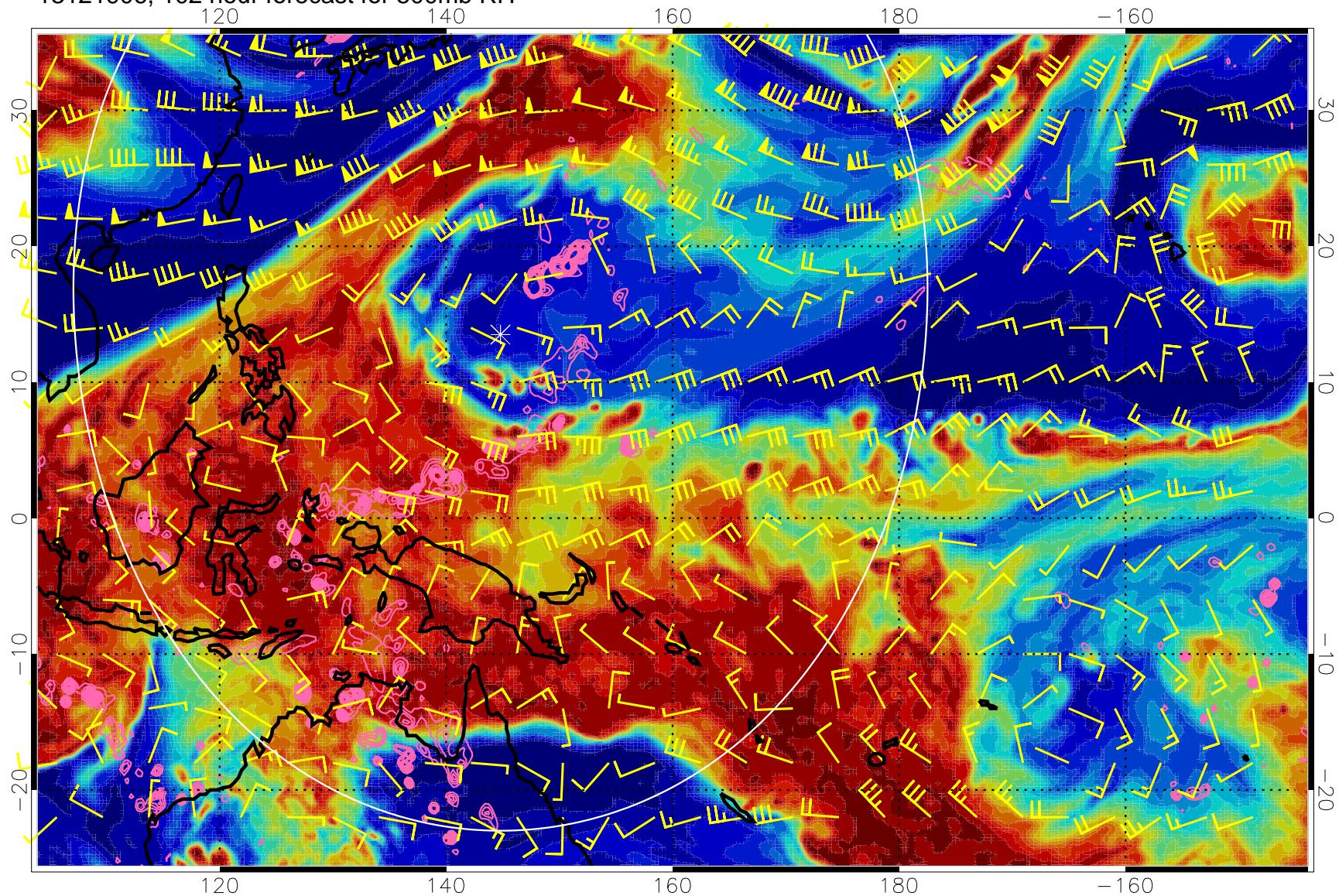


0 20 40 60 80 100
RH, %

Negative Omegas less than -0.3 , contours of 0.3 Pa/s

EPV Tropopause (2 PVU) Position

13121906, 102 hour forecast for 500mb RH

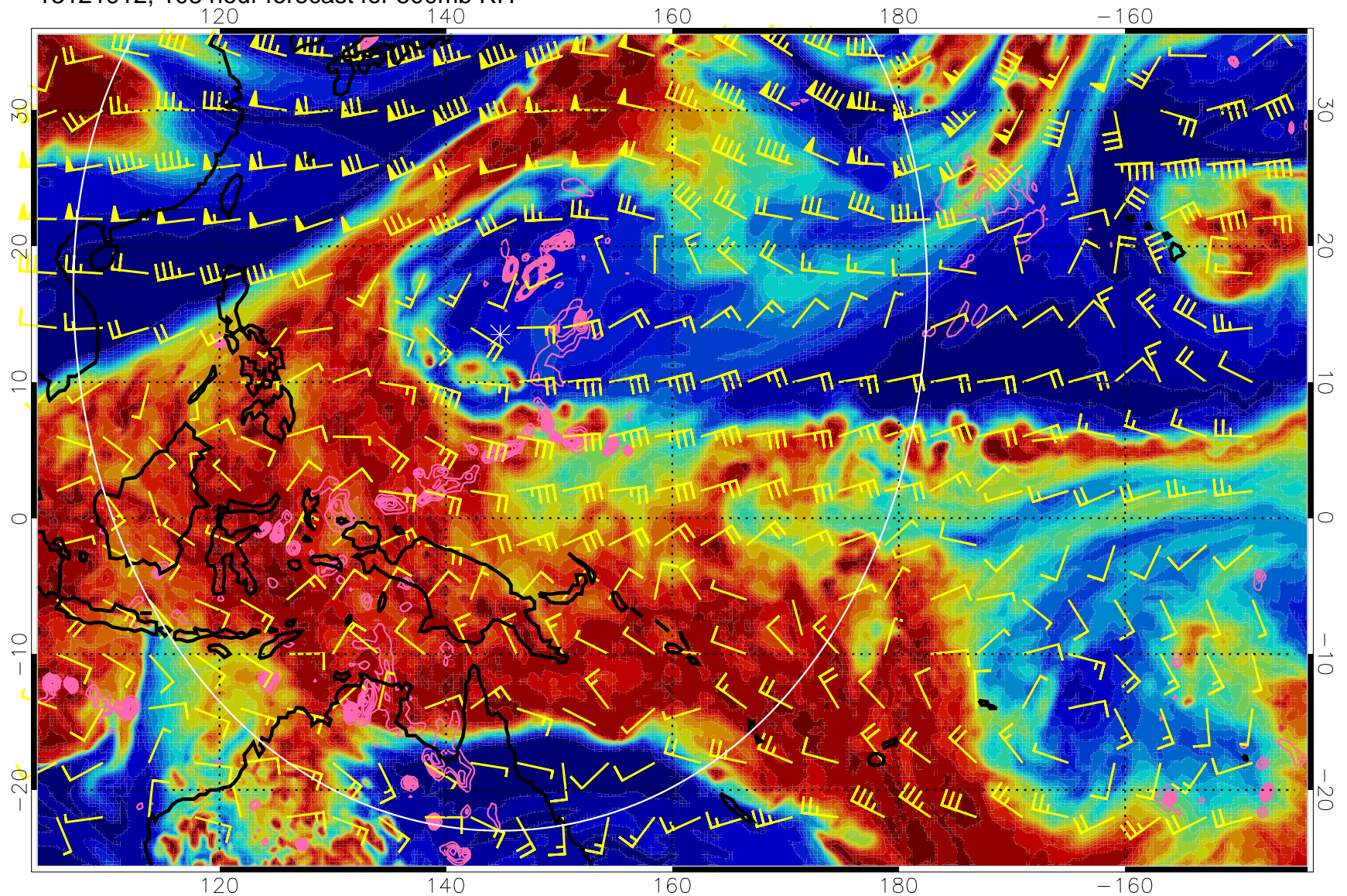


RH, %

Negative Omegas less than -0.3 , contours of 0.3 Pa/s

EPV Tropopause (2 PVU) Position

13121912, 108 hour forecast for 500mb RH

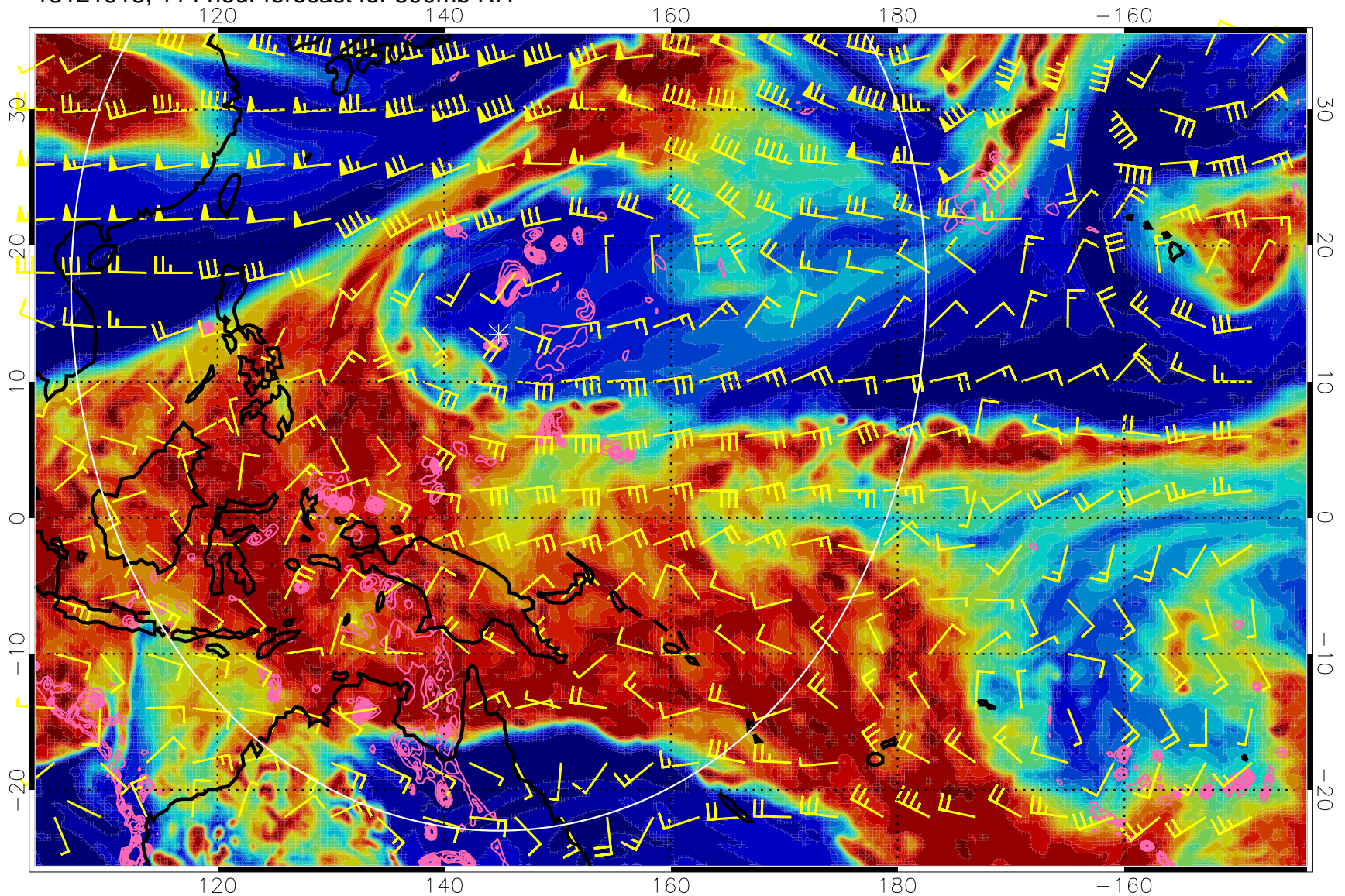


0 20 40 60 80 100
RH, %

Negative Omegas less than -0.3 , contours of 0.3 Pa/s

EPV Tropopause (2 PVU) Position

13121918, 114 hour forecast for 500mb RH



0 20 40 60 80 100
RH, %

Negative Omegas less than $-.3$, contours of $.3$ Pa/s

EPV Tropopause (2 PVU) Position