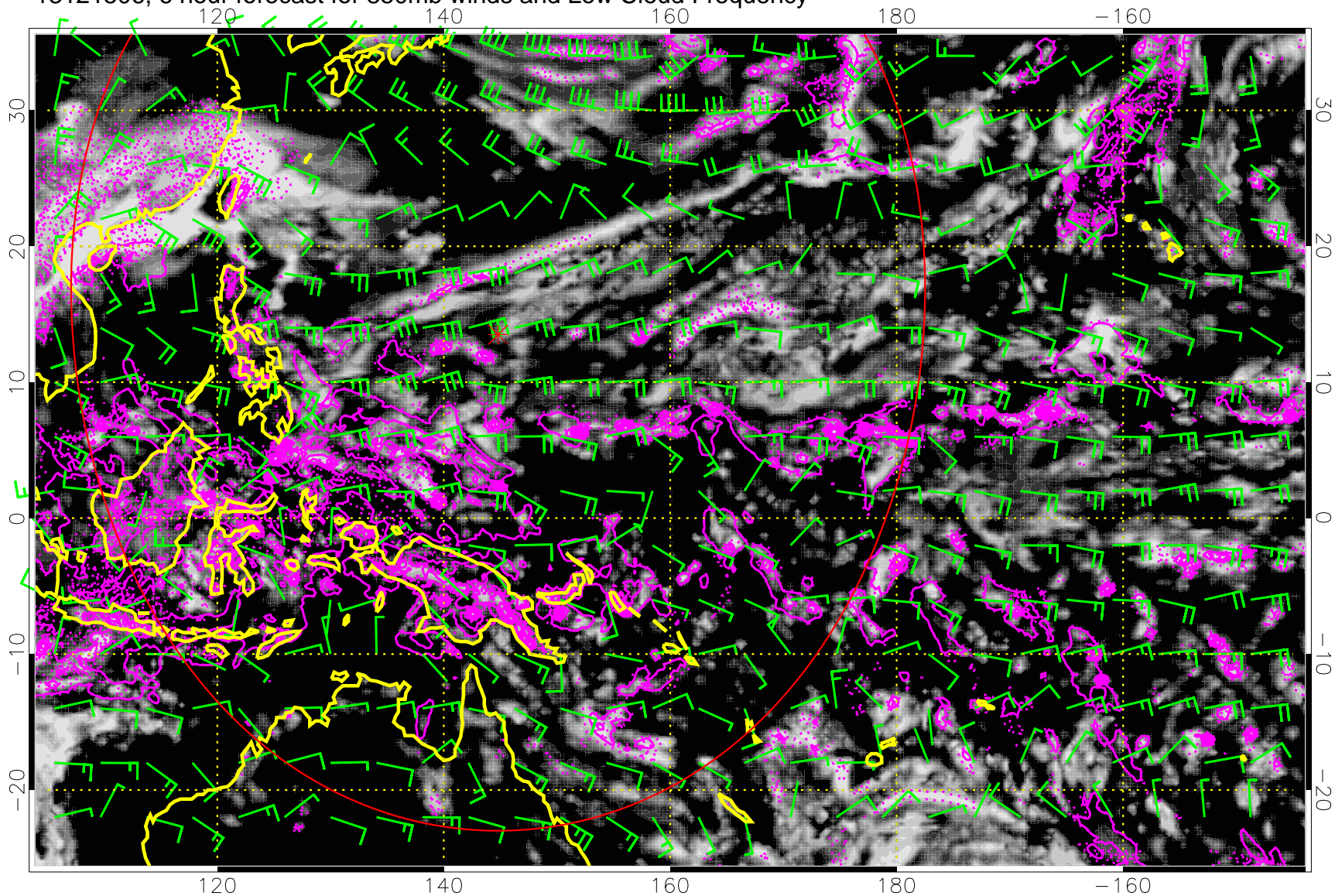
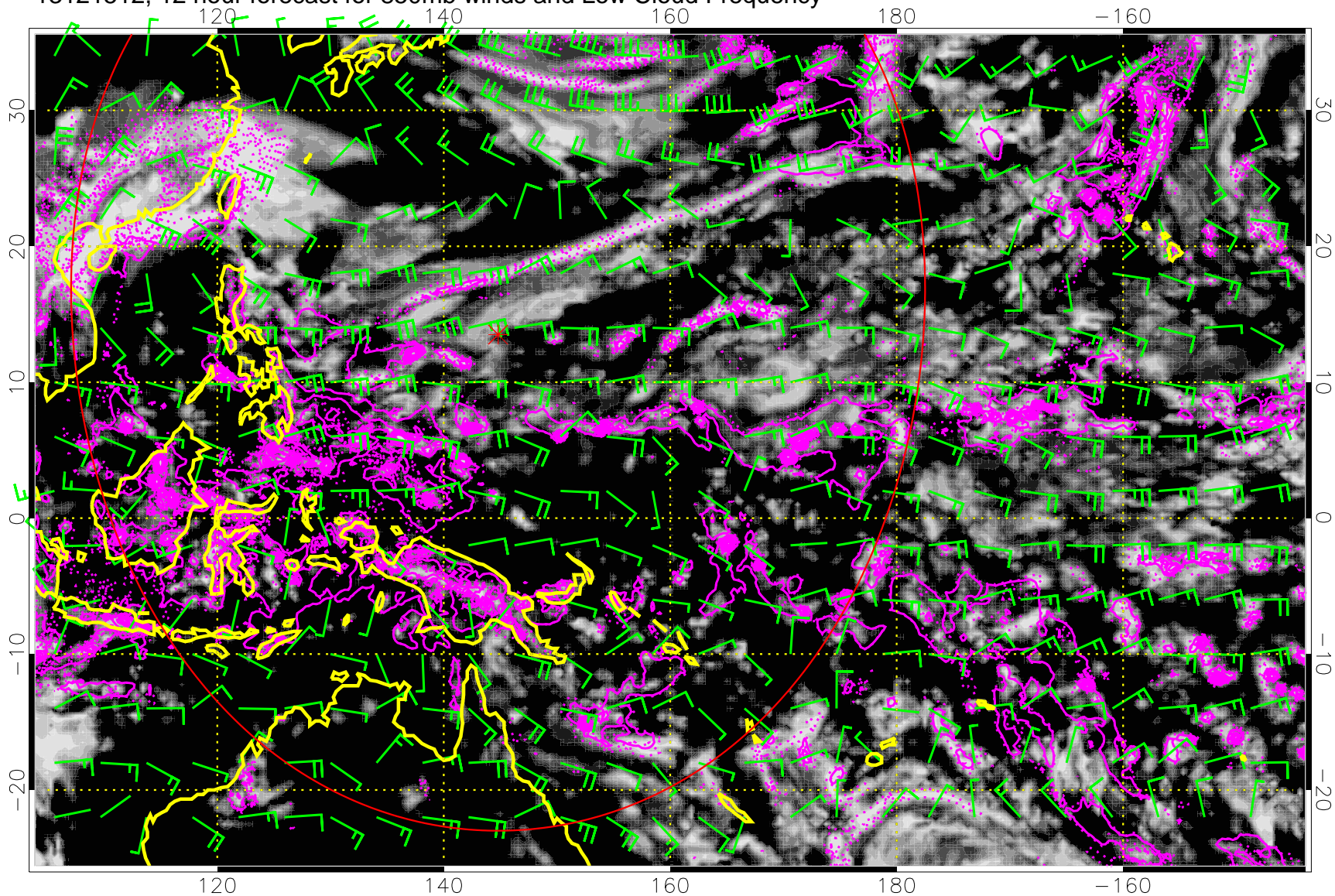


13121506, 6 hour forecast for 850mb winds and Low Cloud Frequency



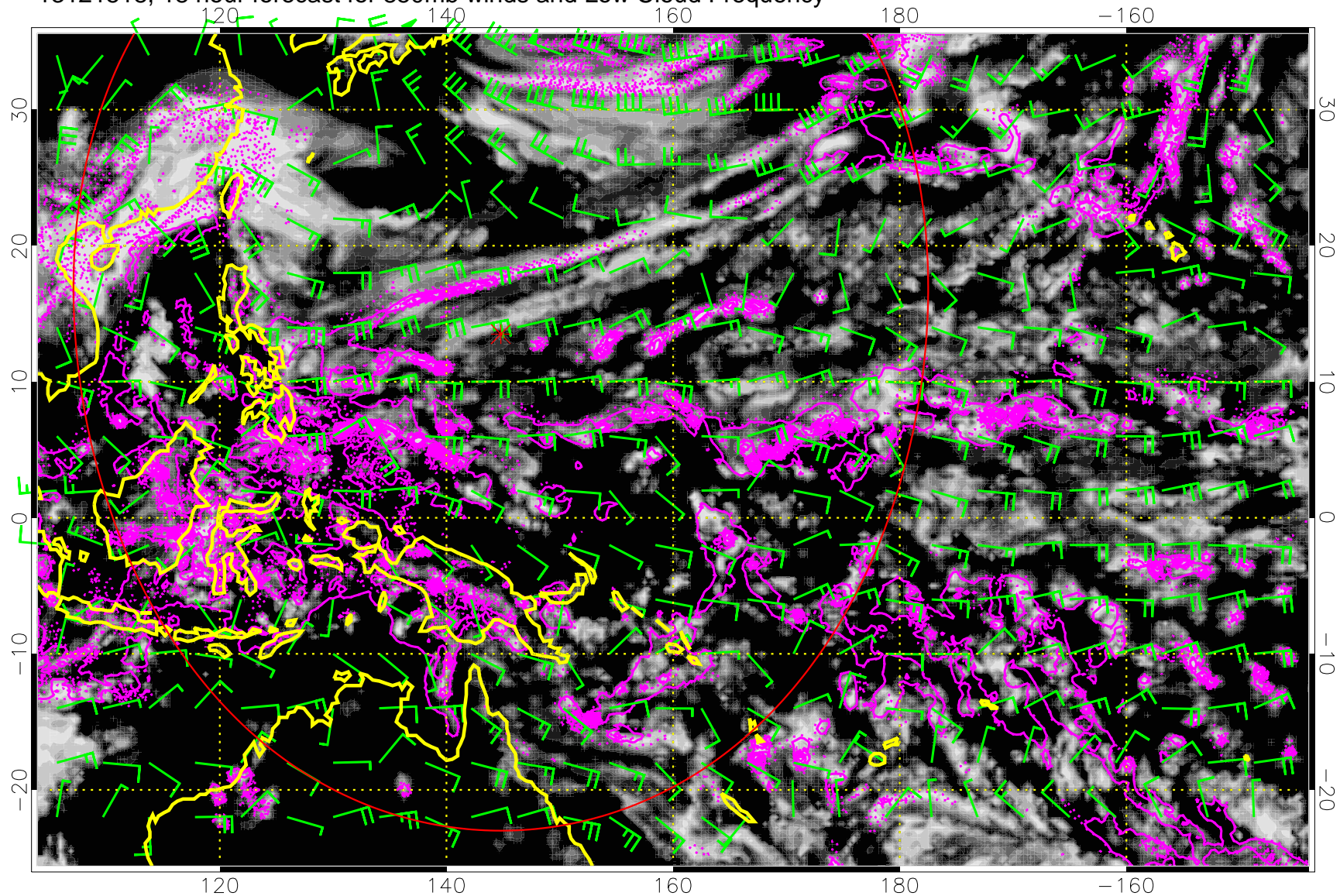
Precip (tot dot, conv sol) 6 mm/day contours, min 4

13121512, 12 hour forecast for 850mb winds and Low Cloud Frequency



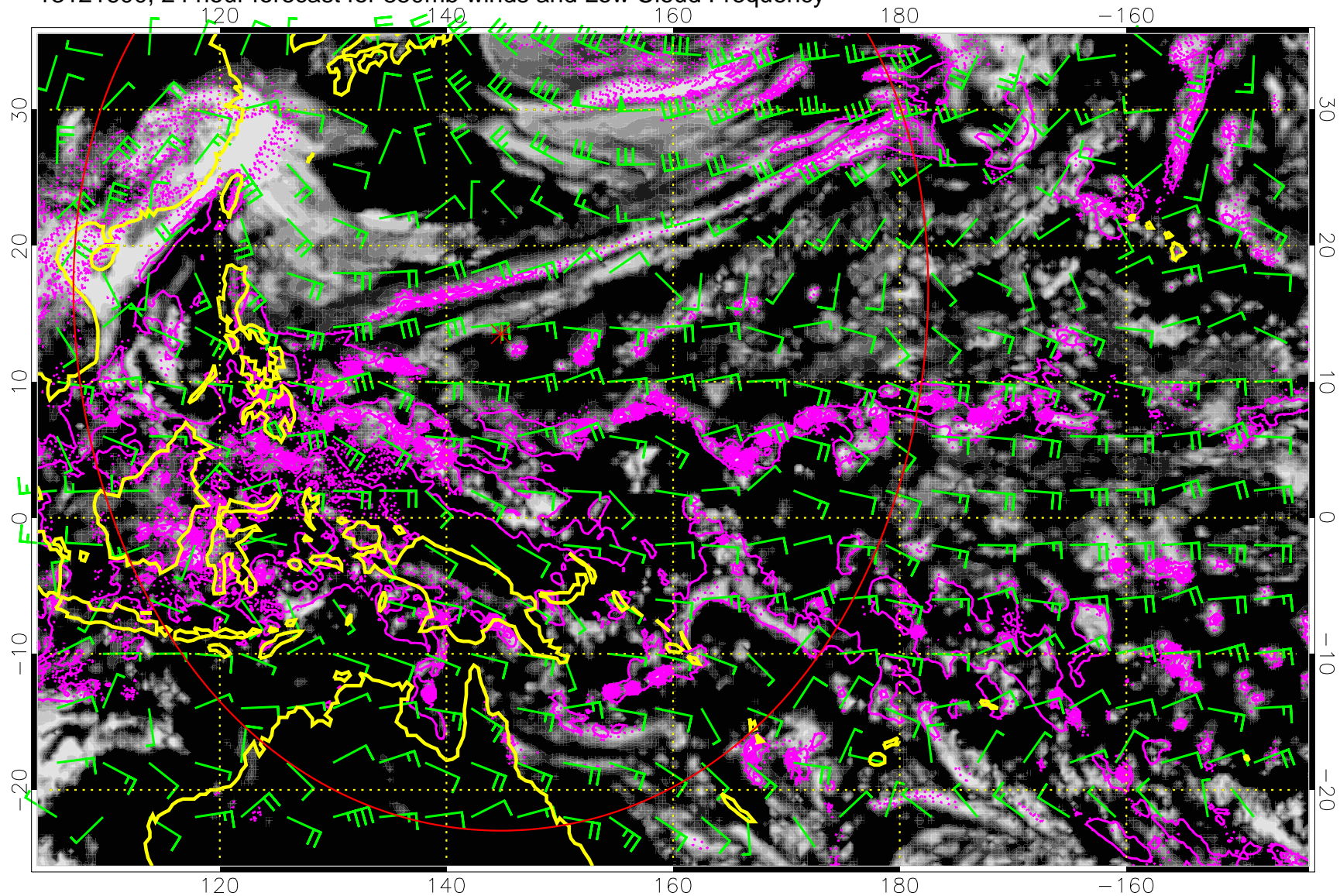
Precip (tot dot, conv sol) 6 mm/day contours, min 4

13121518, 18 hour forecast for 850mb winds and Low Cloud Frequency



Precip (tot dot, conv sol) 6 mm/day contours, min 4

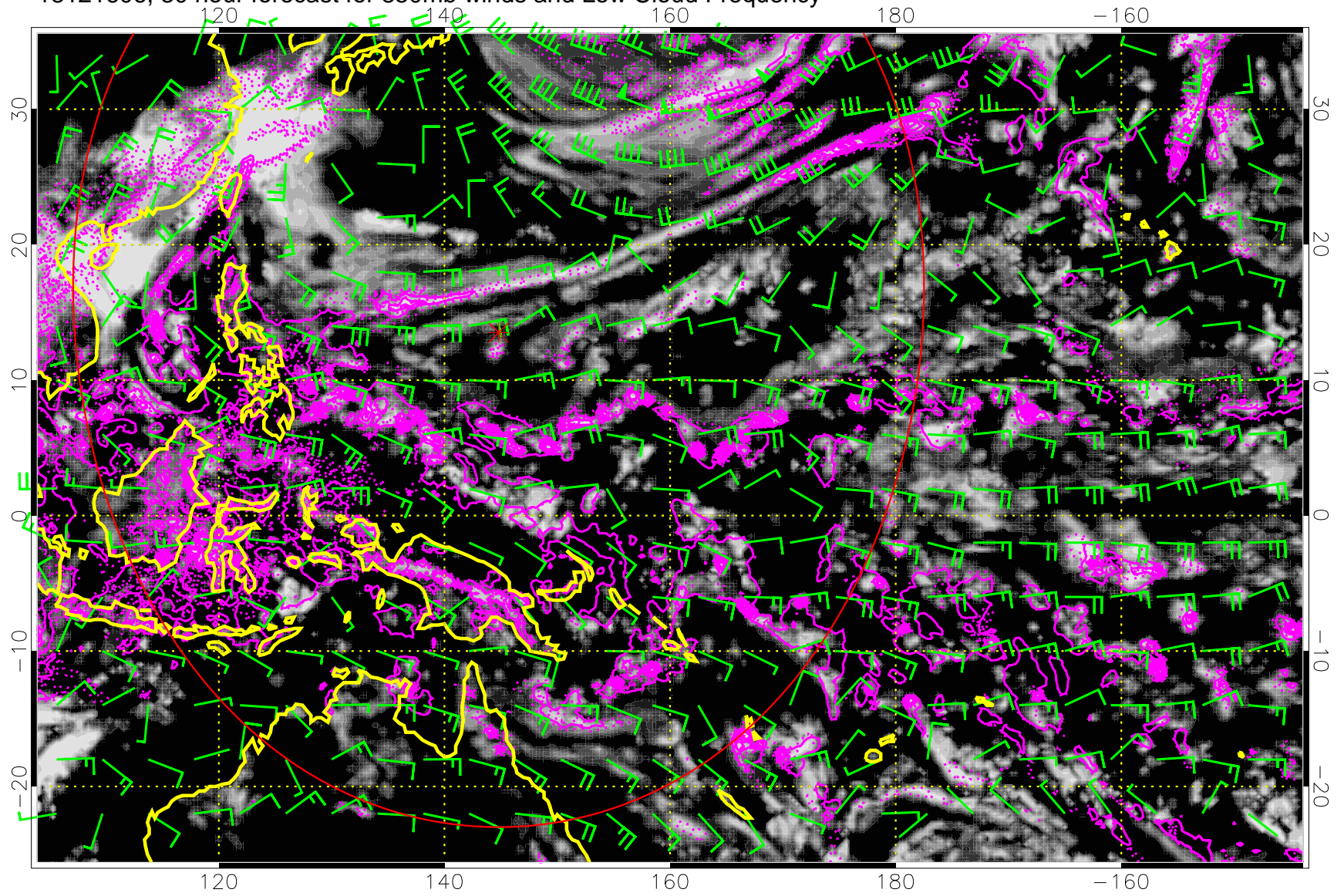
13121600, 24 hour forecast for 850mb winds and Low Cloud Frequency



0.0 0.2 0.4 0.6 0.8 1.0  
Low Cloud Frequency

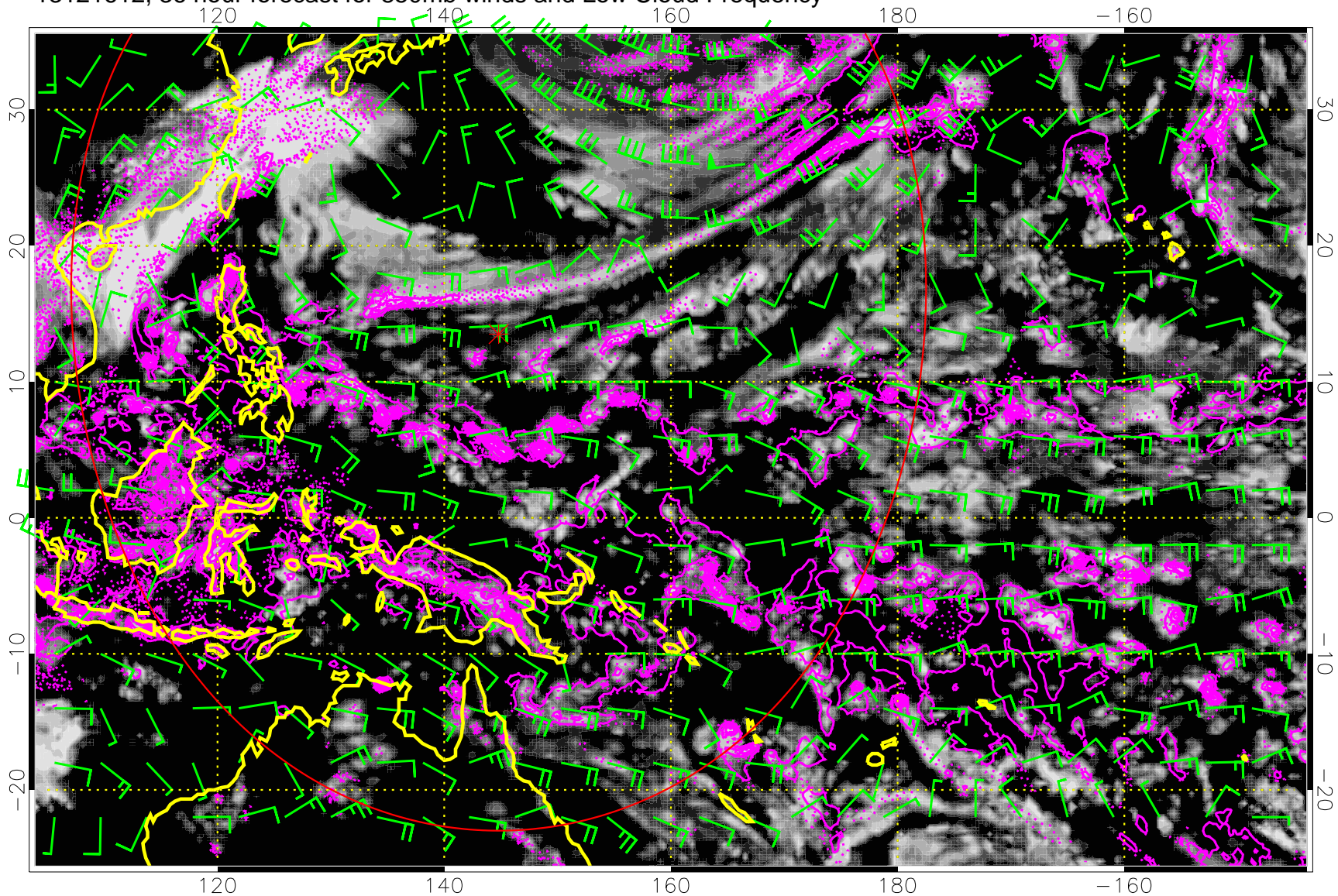
Precip (tot dot, conv sol) 6 mm/day contours, min 4

13121606, 30 hour forecast for 850mb winds and Low Cloud Frequency



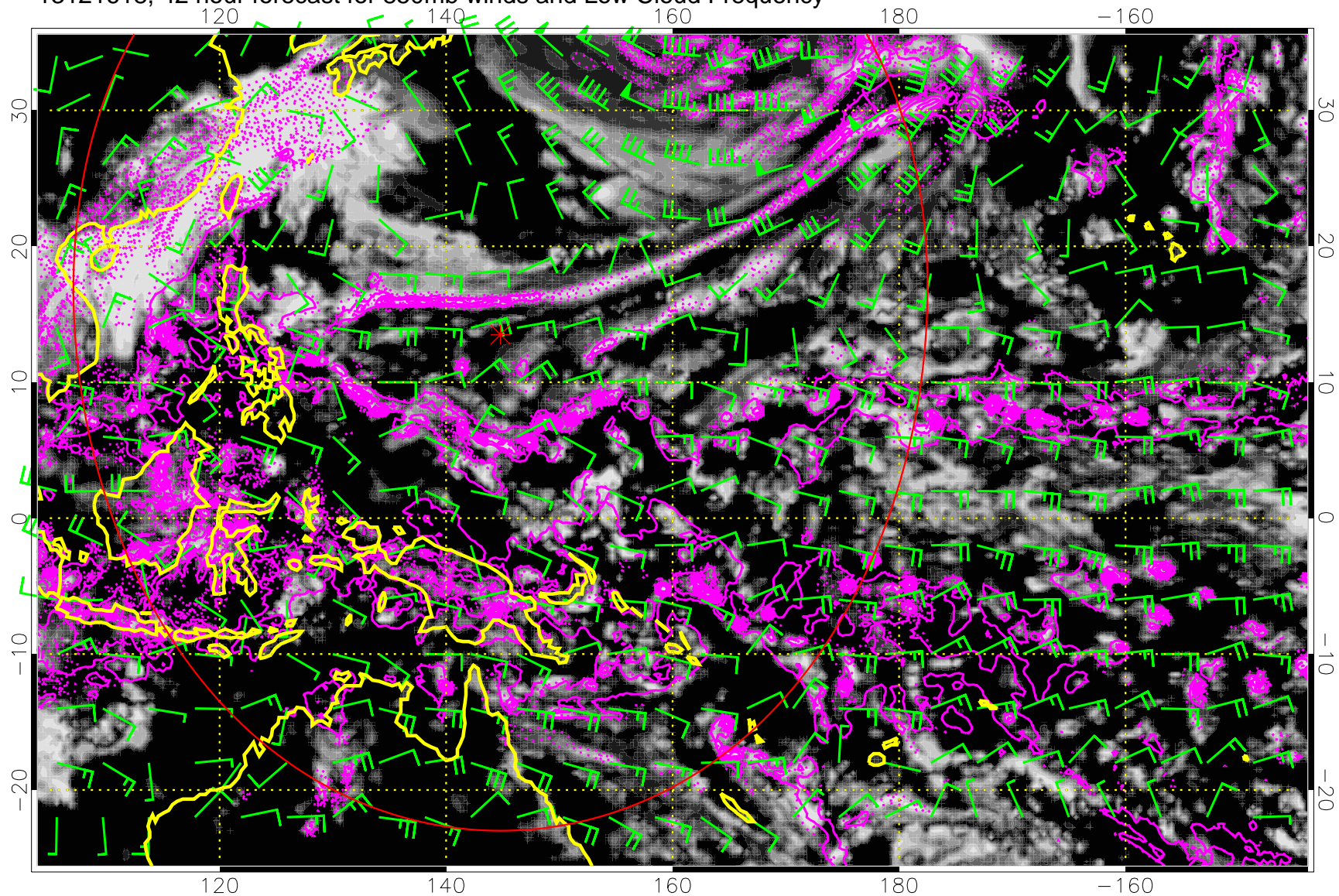
Precip (tot dot, conv sol) 6 mm/day contours, min 4

13121612, 36 hour forecast for 850mb winds and Low Cloud Frequency



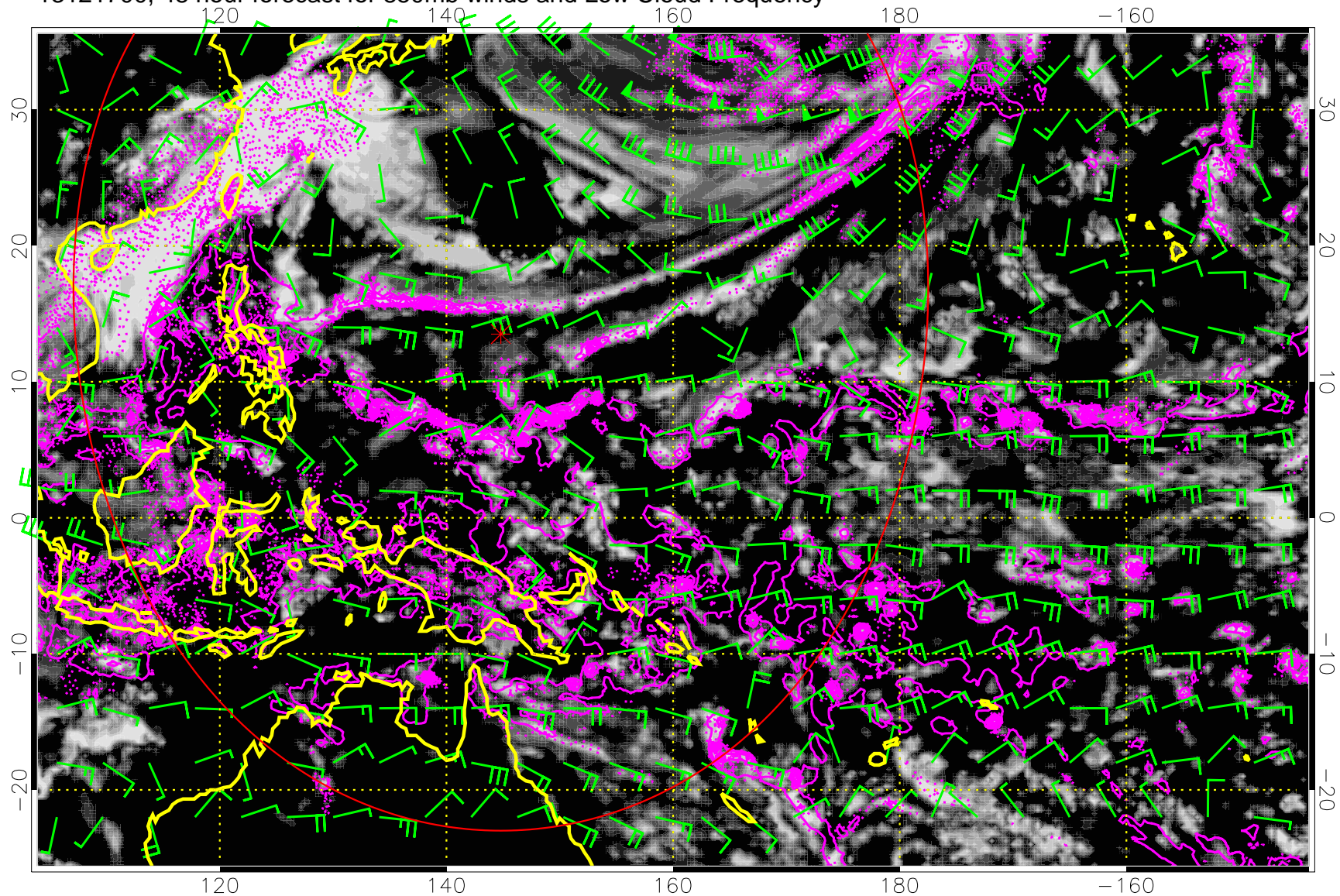
Precip (tot dot, conv sol) 6 mm/day contours, min 4

13121618, 42 hour forecast for 850mb winds and Low Cloud Frequency



Precip (tot dot, conv sol) 6 mm/day contours, min 4

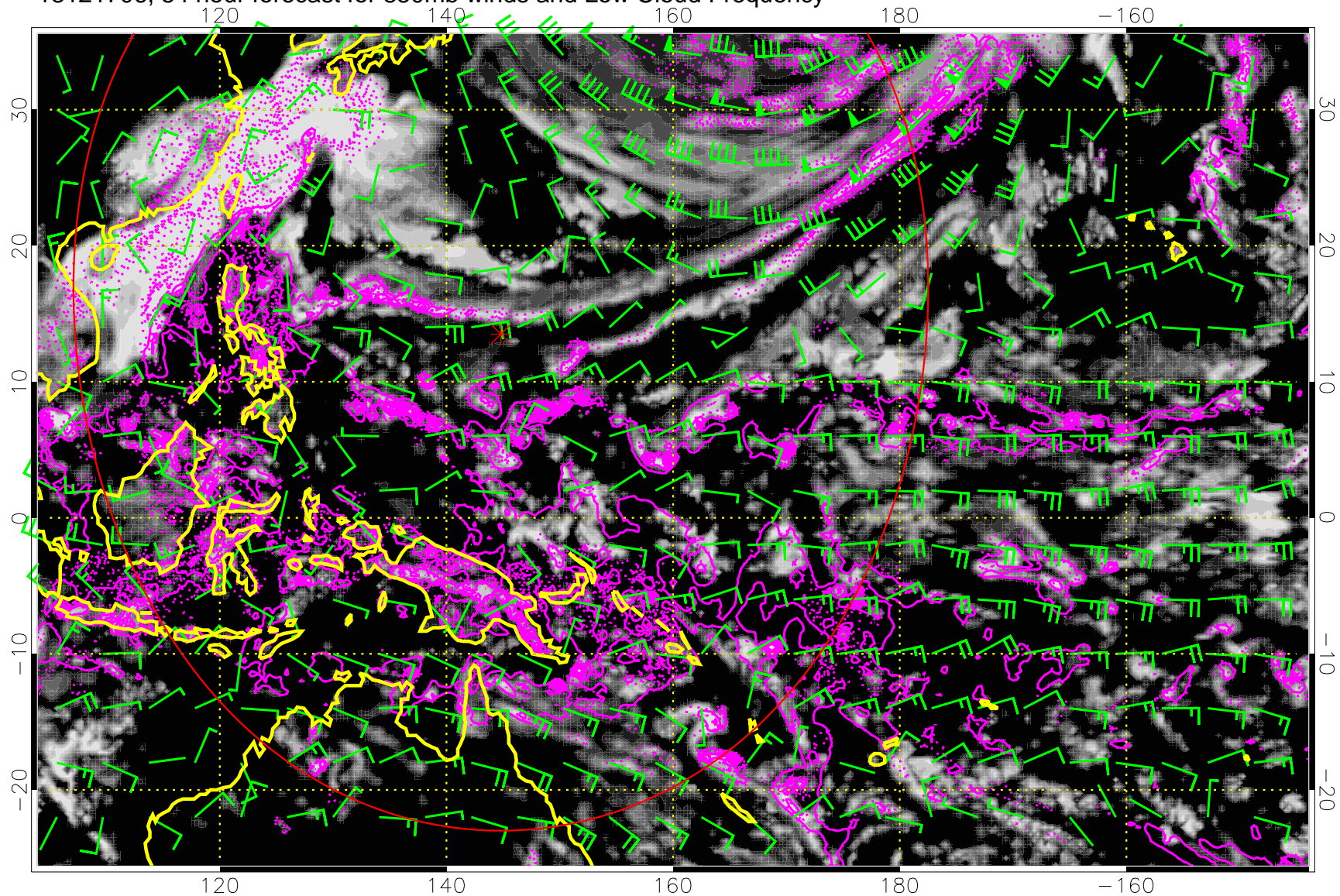
13121700, 48 hour forecast for 850mb winds and Low Cloud Frequency



Precip (tot dot, conv sol) 6 mm/day contours, min 4

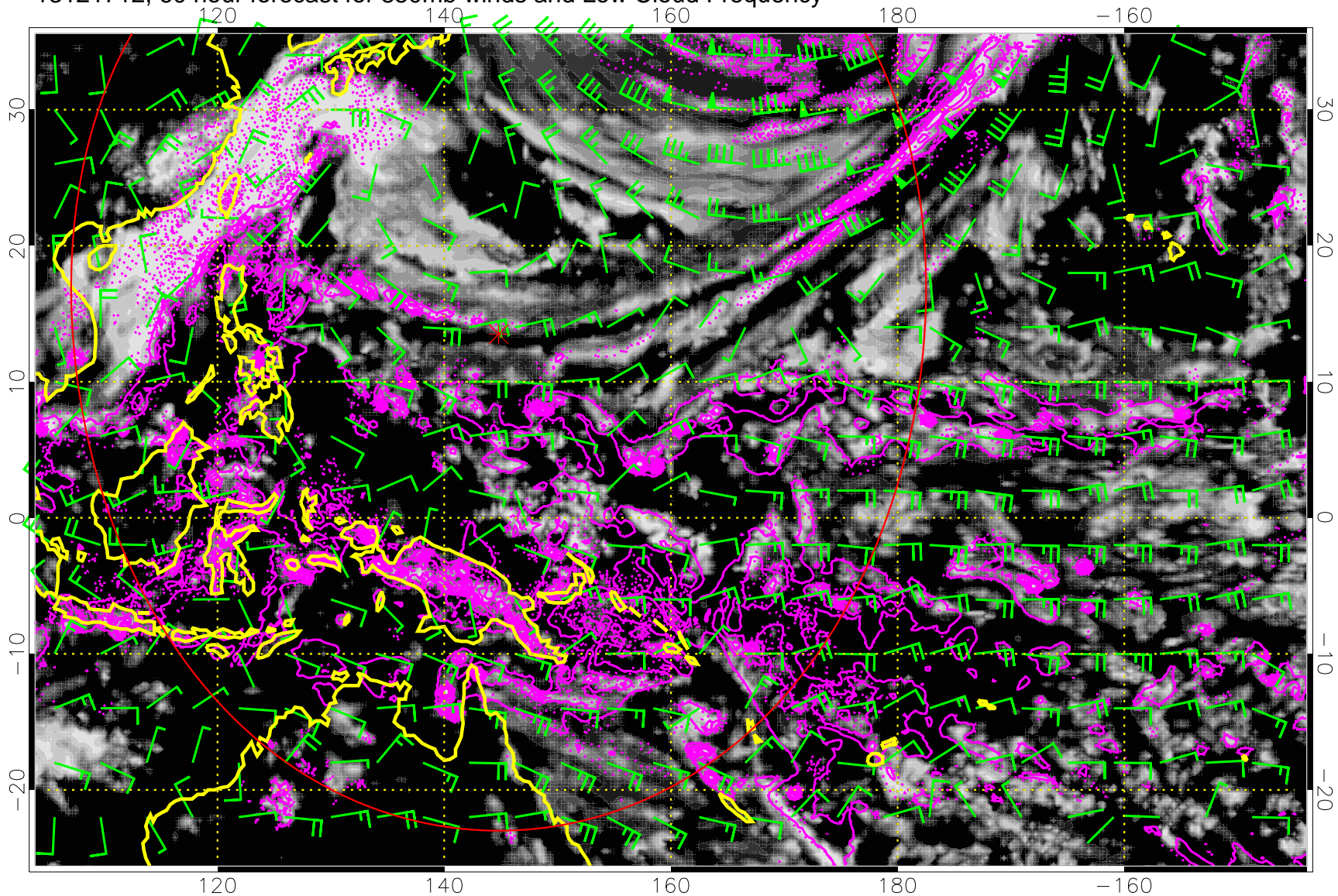


13121706, 54 hour forecast for 850mb winds and Low Cloud Frequency



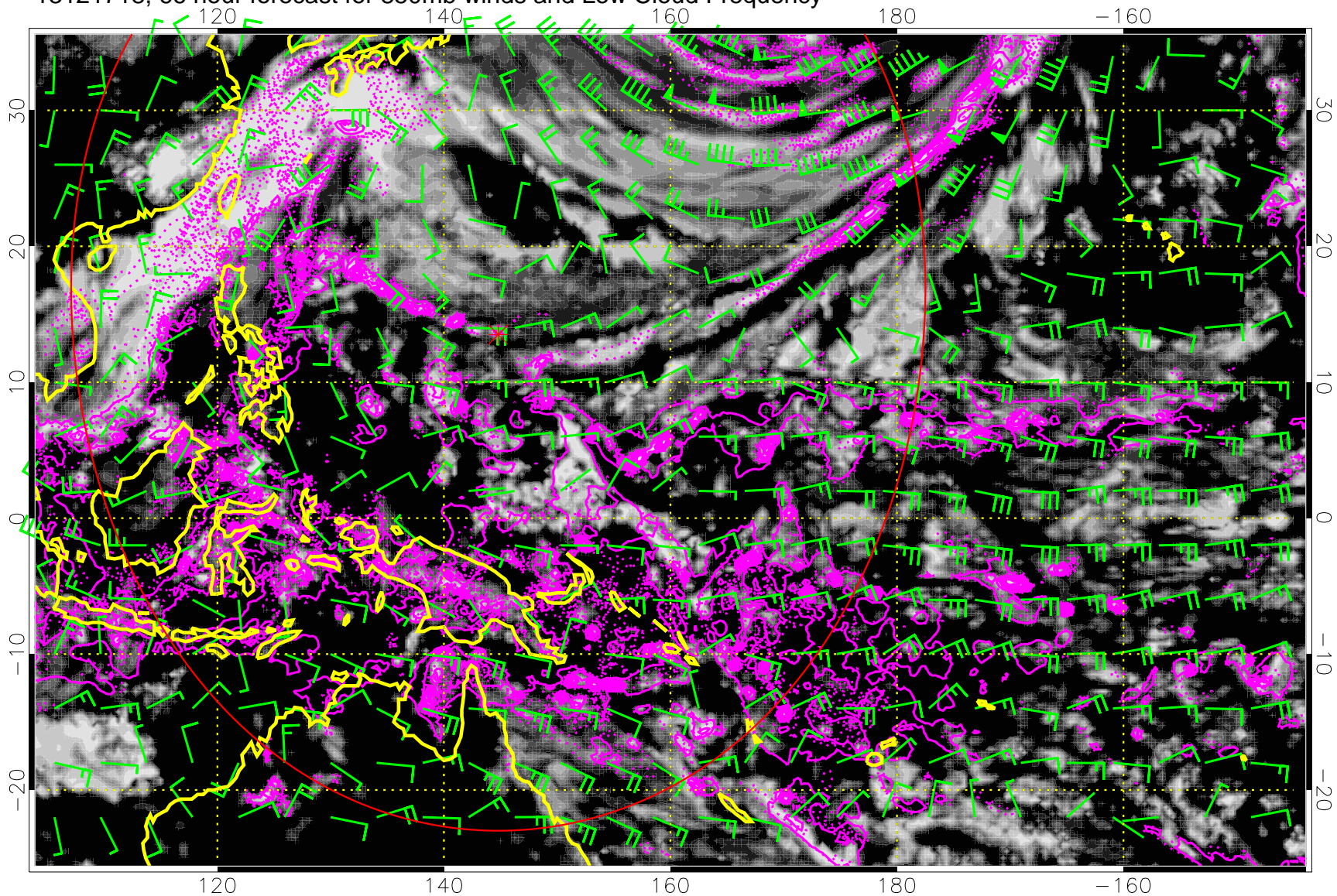
Precip (tot dot, conv sol) 6 mm/day contours, min 4

13121712, 60 hour forecast for 850mb winds and Low Cloud Frequency



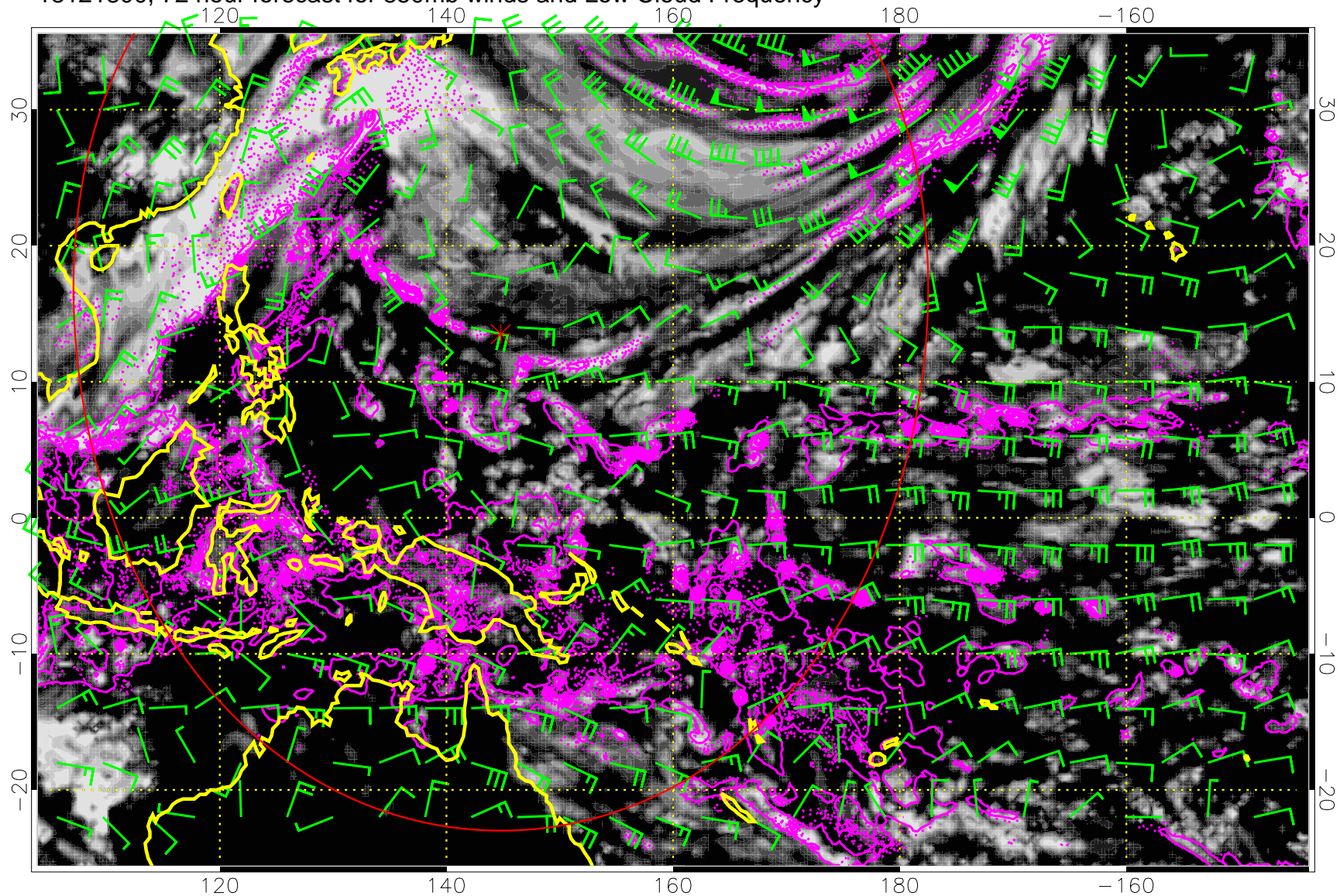
Precip (tot dot, conv sol) 6 mm/day contours, min 4

13121718, 66 hour forecast for 850mb winds and Low Cloud Frequency



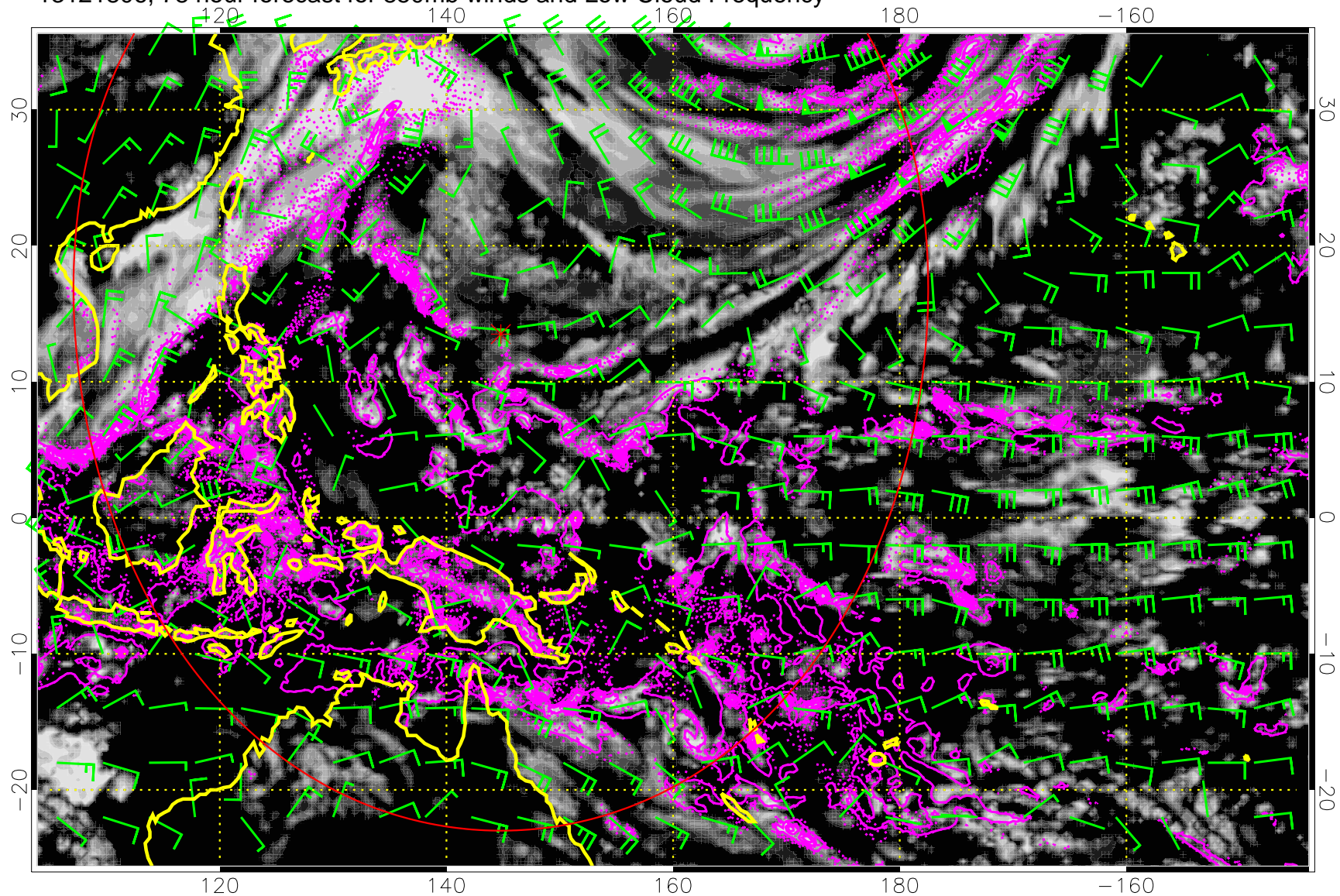
Precip (tot dot, conv sol) 6 mm/day contours, min 4

13121800, 72 hour forecast for 850mb winds and Low Cloud Frequency



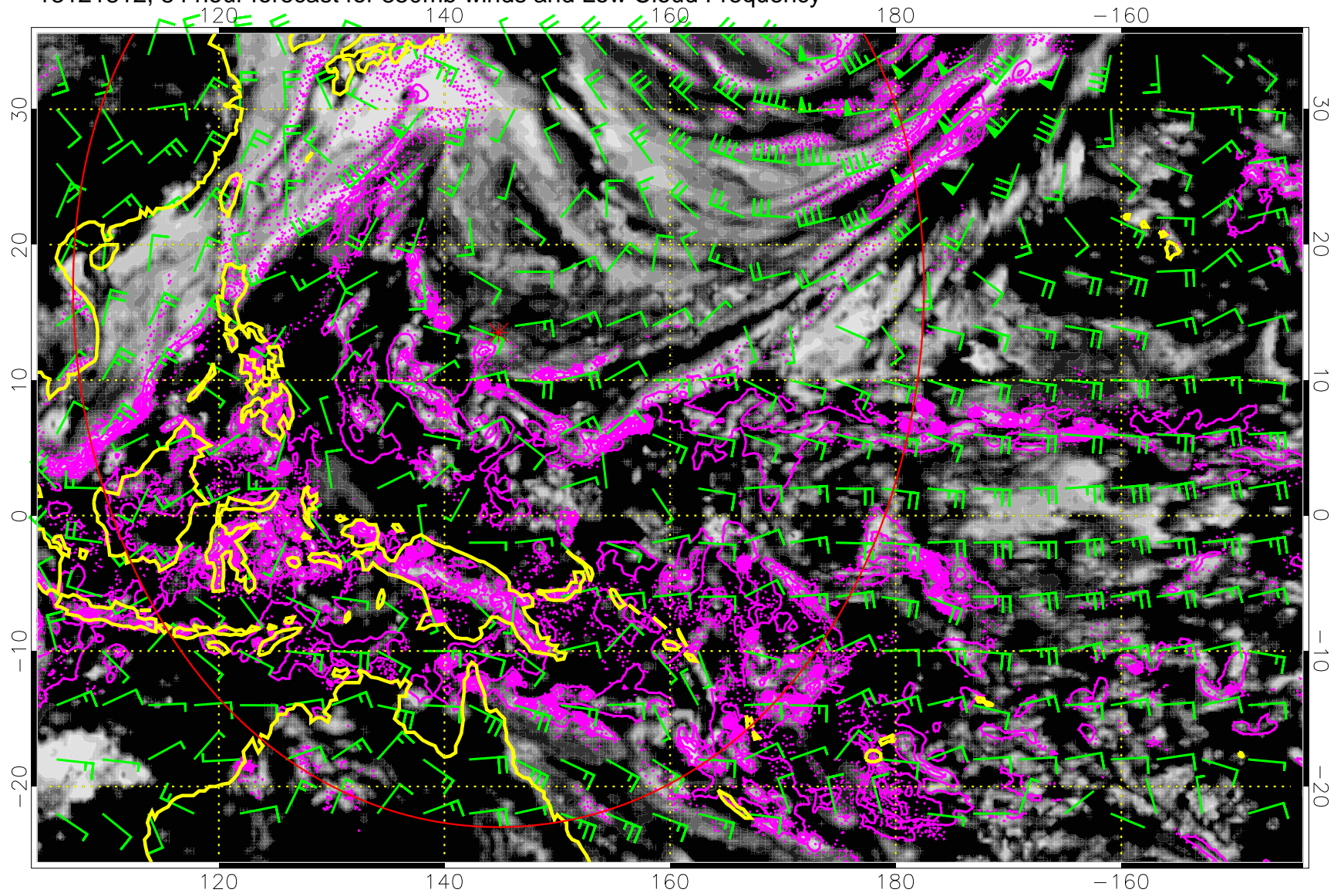
Precip (tot dot, conv sol) 6 mm/day contours, min 4

13121806, 78 hour forecast for 850mb winds and Low Cloud Frequency



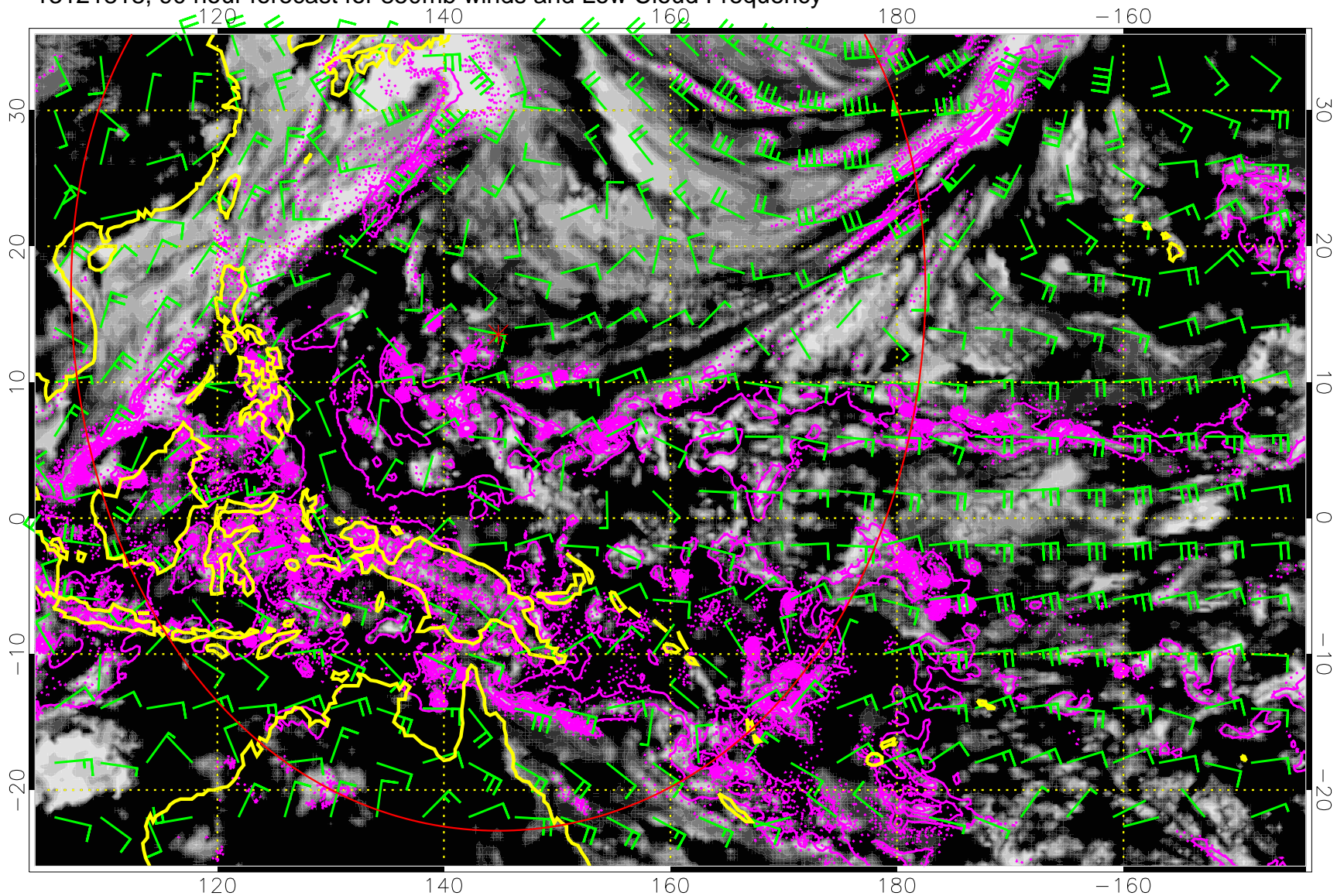
Precip (tot dot, conv sol) 6 mm/day contours, min 4

13121812, 84 hour forecast for 850mb winds and Low Cloud Frequency



Precip (tot dot, conv sol) 6 mm/day contours, min 4

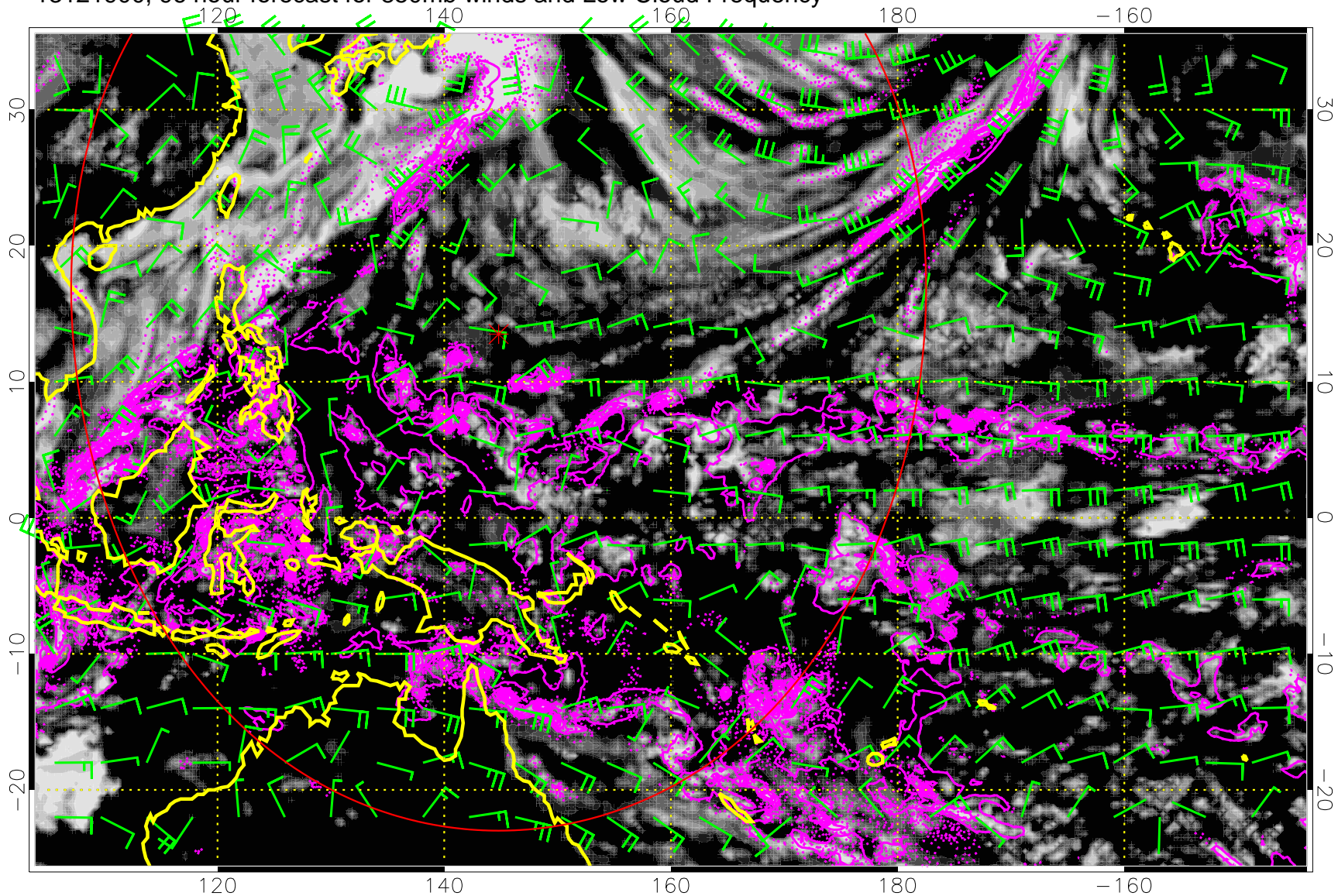
13121818, 90 hour forecast for 850mb winds and Low Cloud Frequency



Low Cloud Frequency

Precip (tot dot, conv sol) 6 mm/day contours, min 4

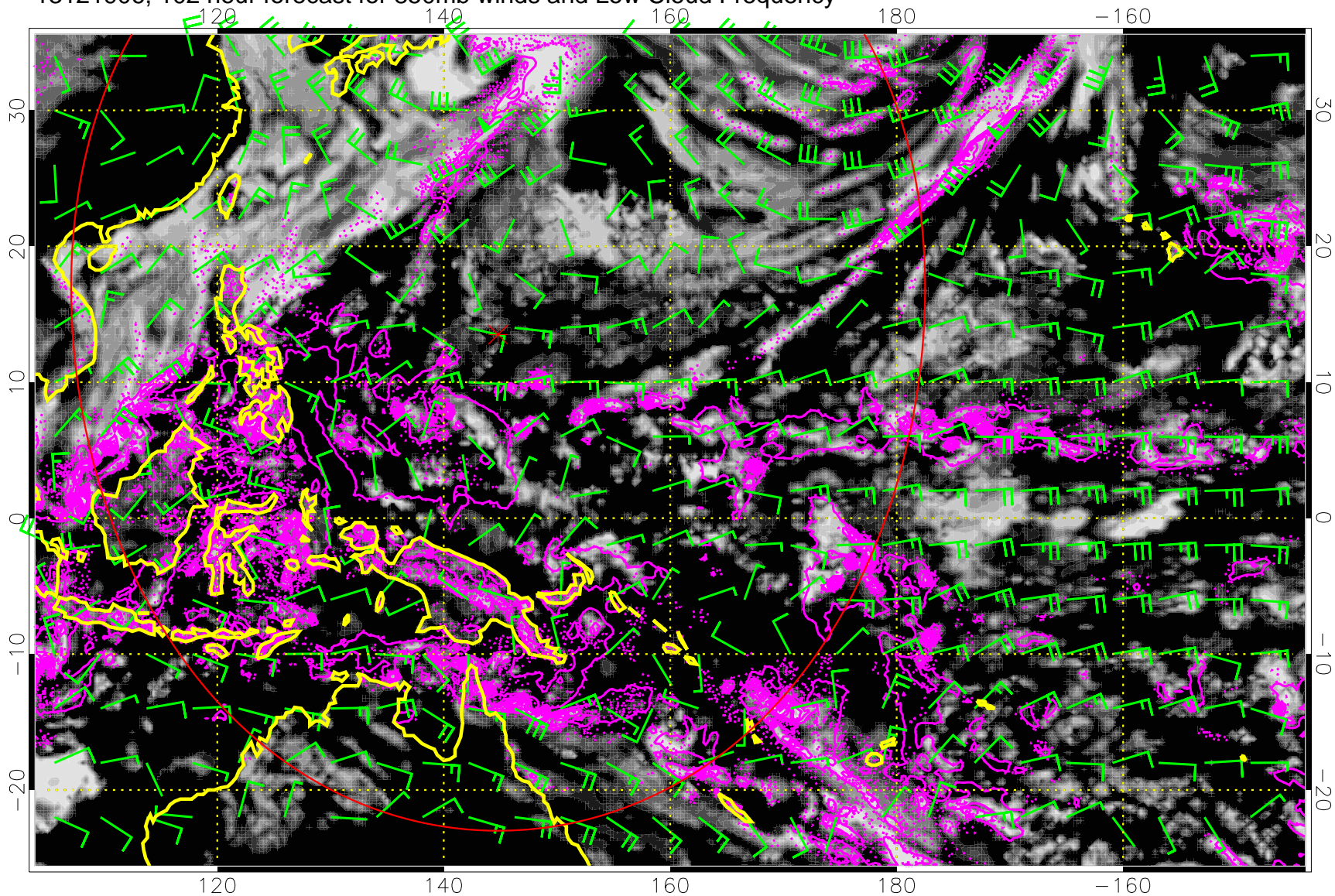
13121900, 96 hour forecast for 850mb winds and Low Cloud Frequency



Precip (tot dot, conv sol) 6 mm/day contours, min 4

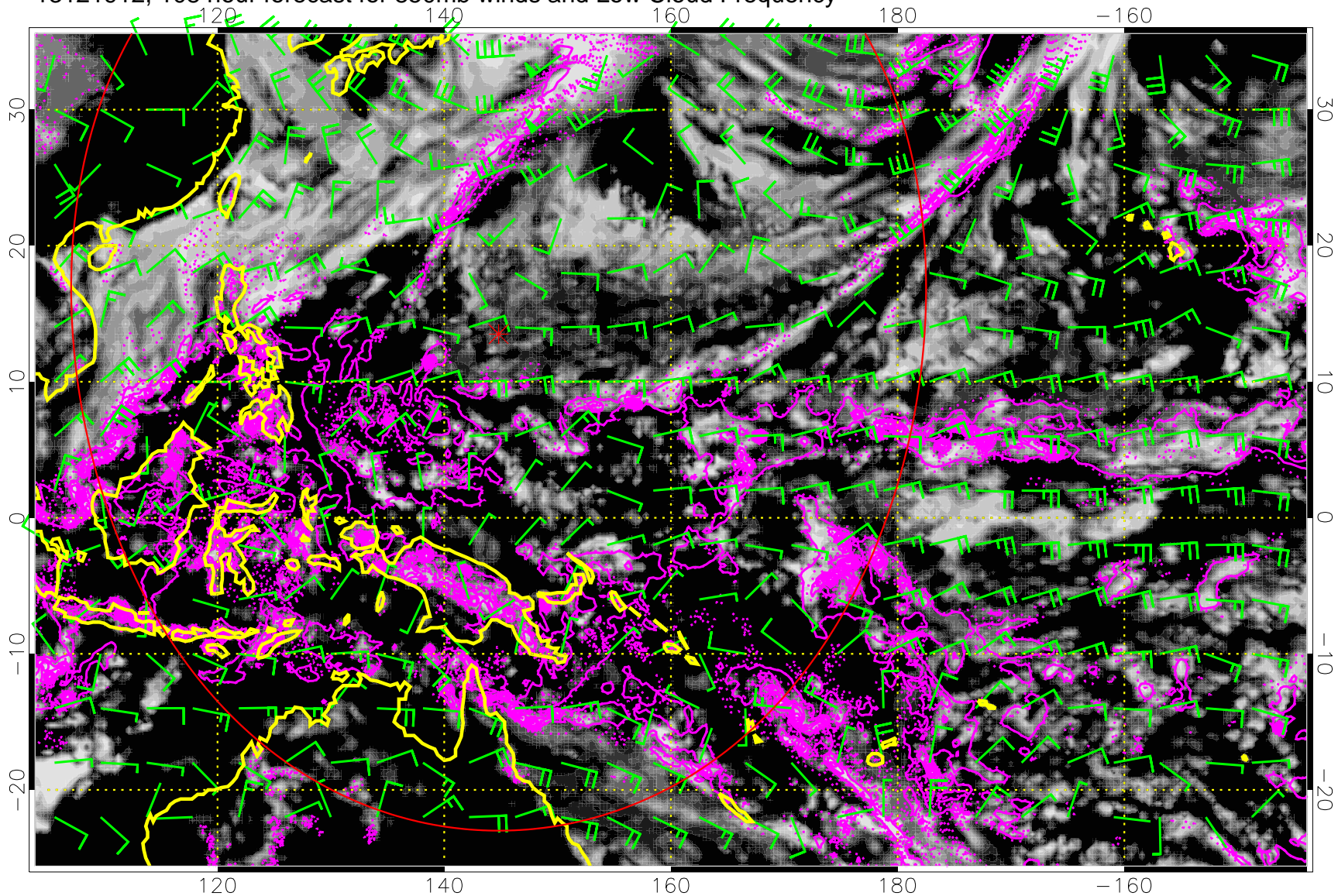


13121906, 102 hour forecast for 850mb winds and Low Cloud Frequency



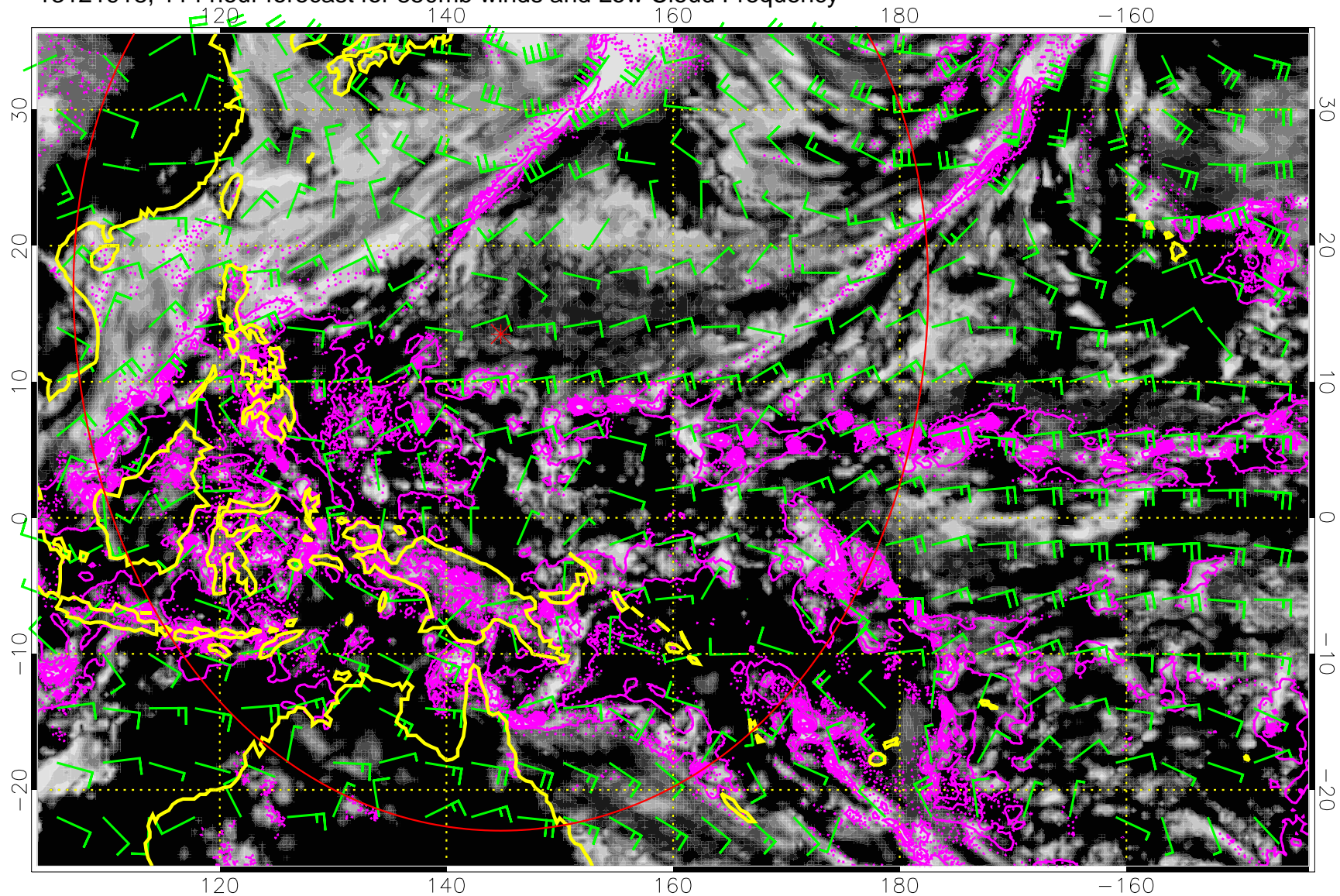
Precip (tot dot, conv sol) 6 mm/day contours, min 4

13121912, 108 hour forecast for 850mb winds and Low Cloud Frequency



Precip (tot dot, conv sol) 6 mm/day contours, min 4

13121918, 114 hour forecast for 850mb winds and Low Cloud Frequency



Precip (tot dot, conv sol) 6 mm/day contours, min 4