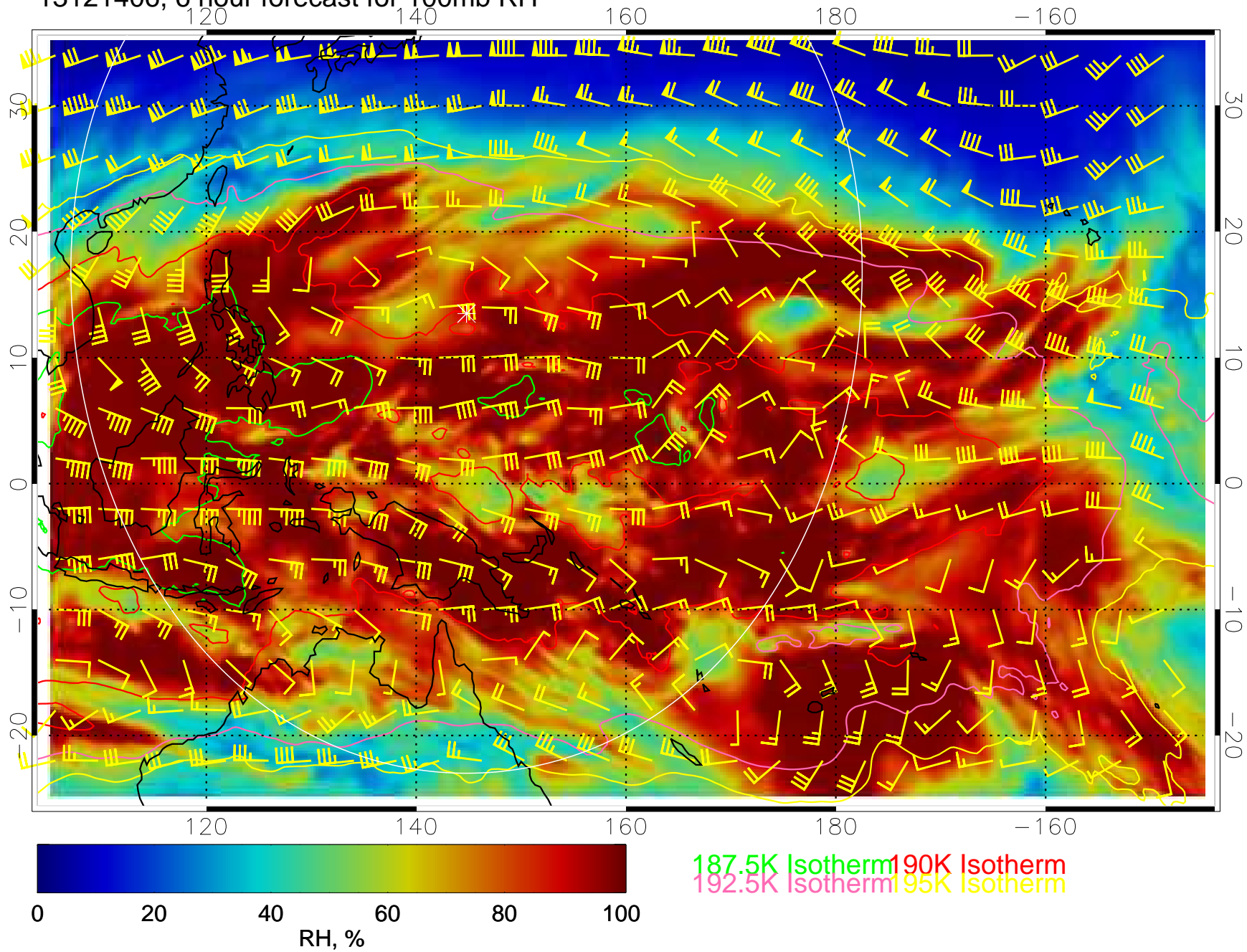
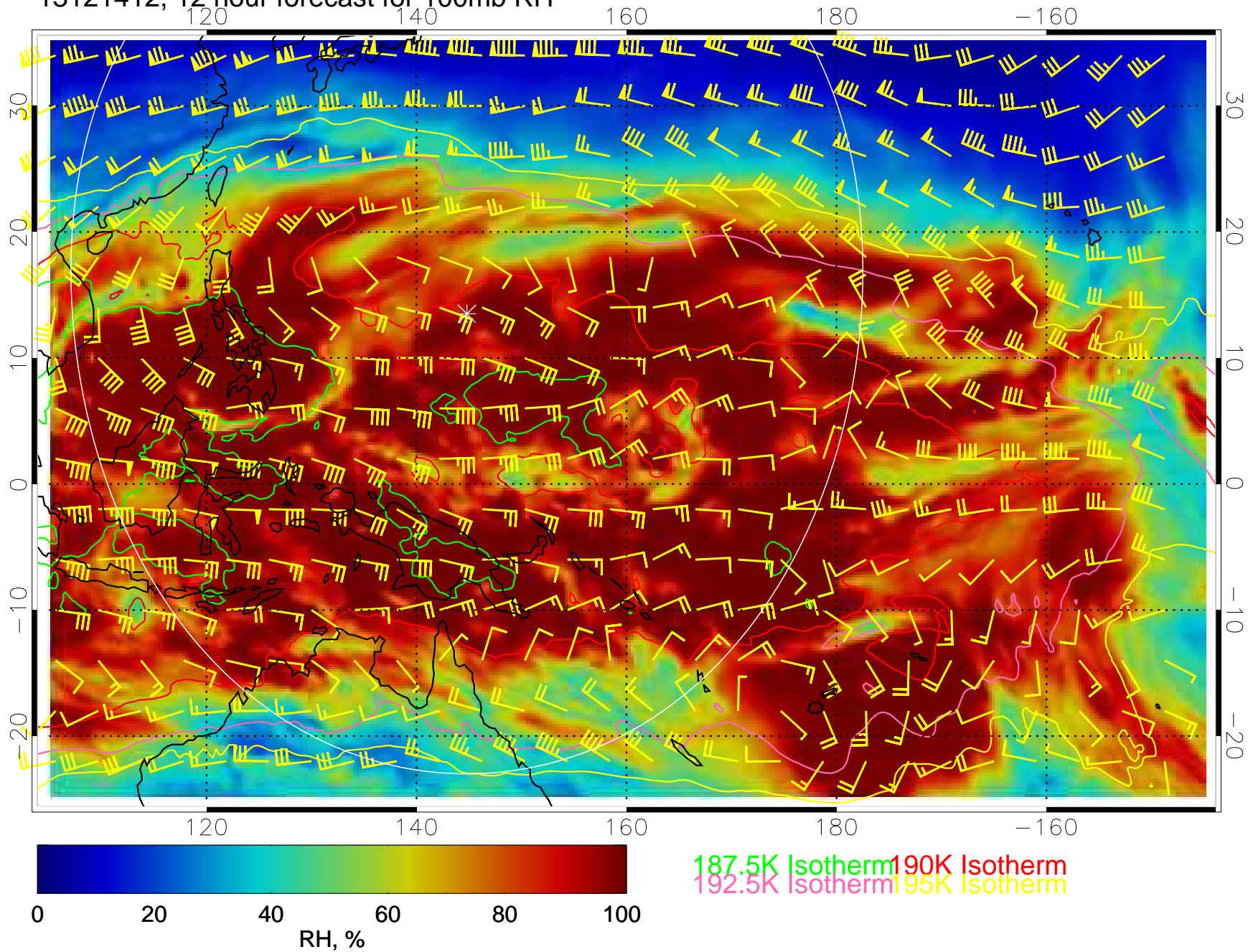


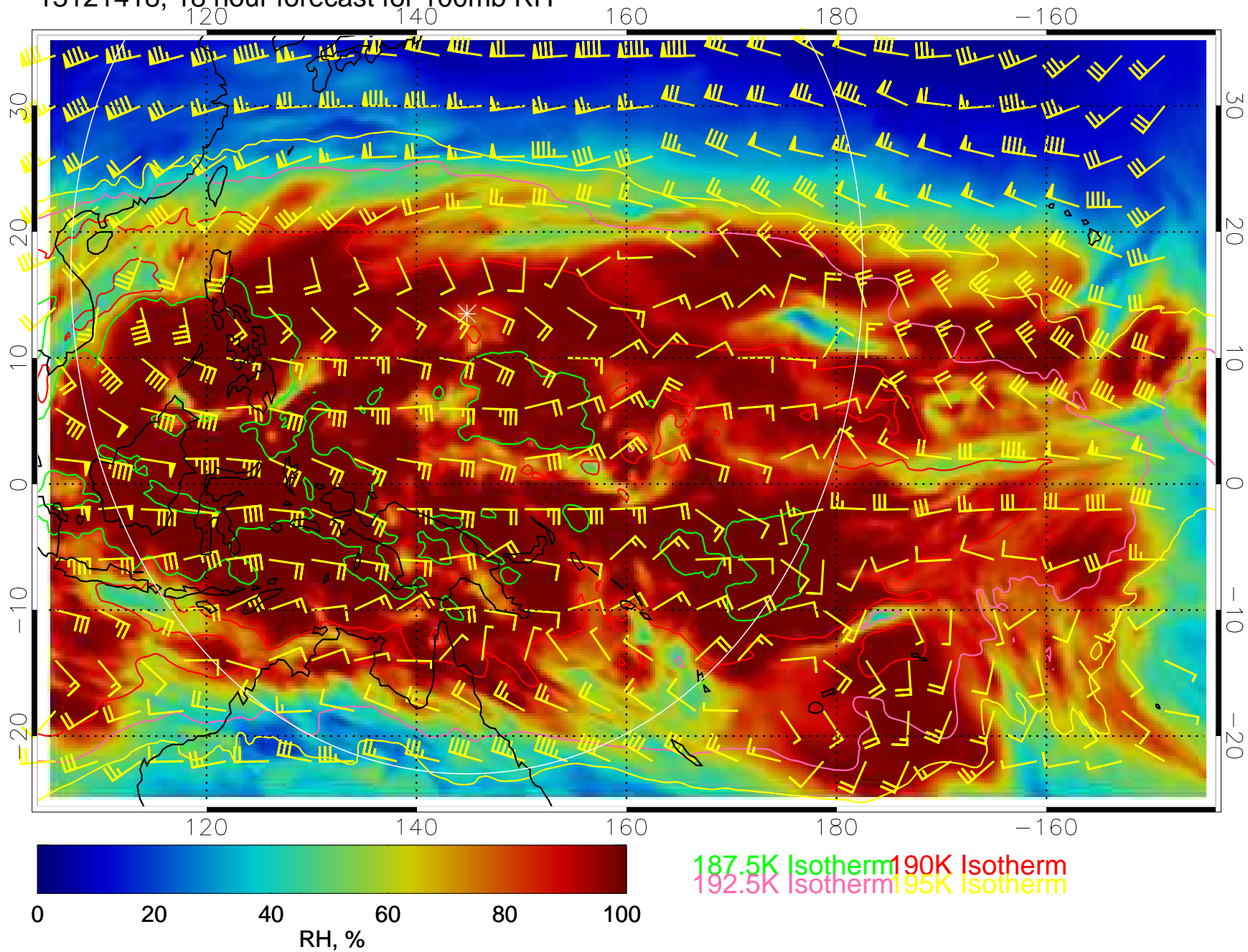
13121406, 6 hour forecast for 100mb RH



13121412, 12 hour forecast for 100mb RH

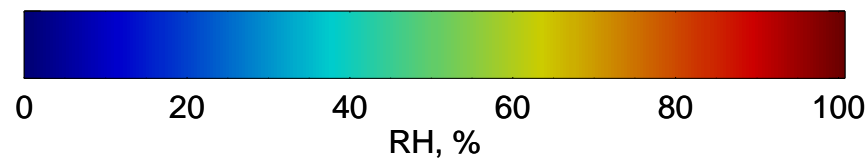
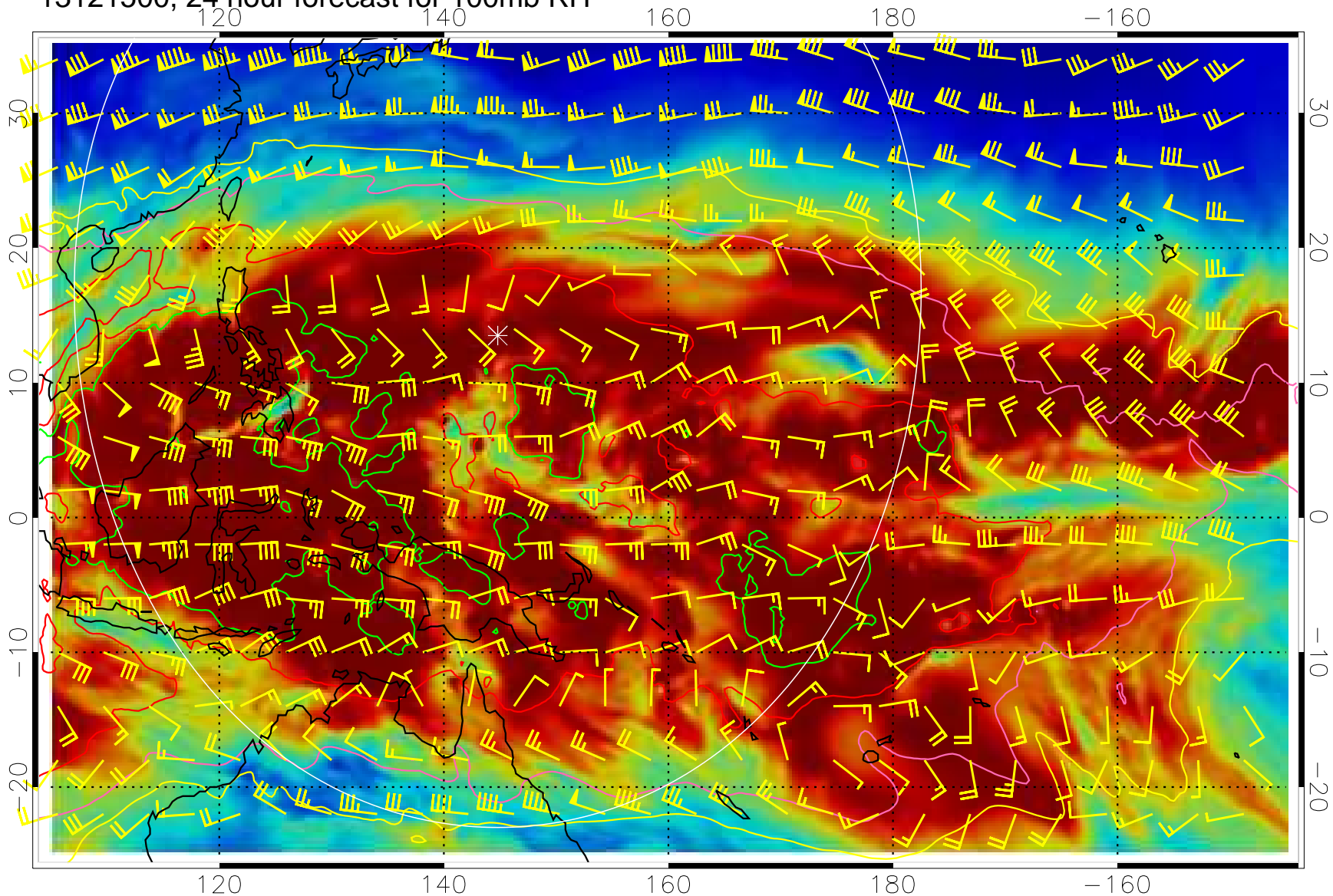


13121418, 18 hour forecast for 100mb RH



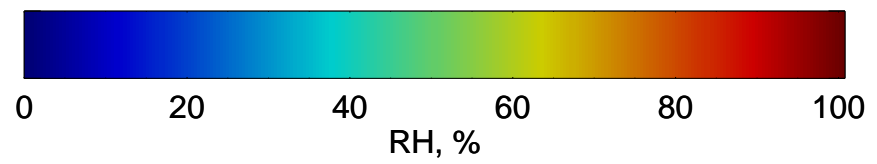
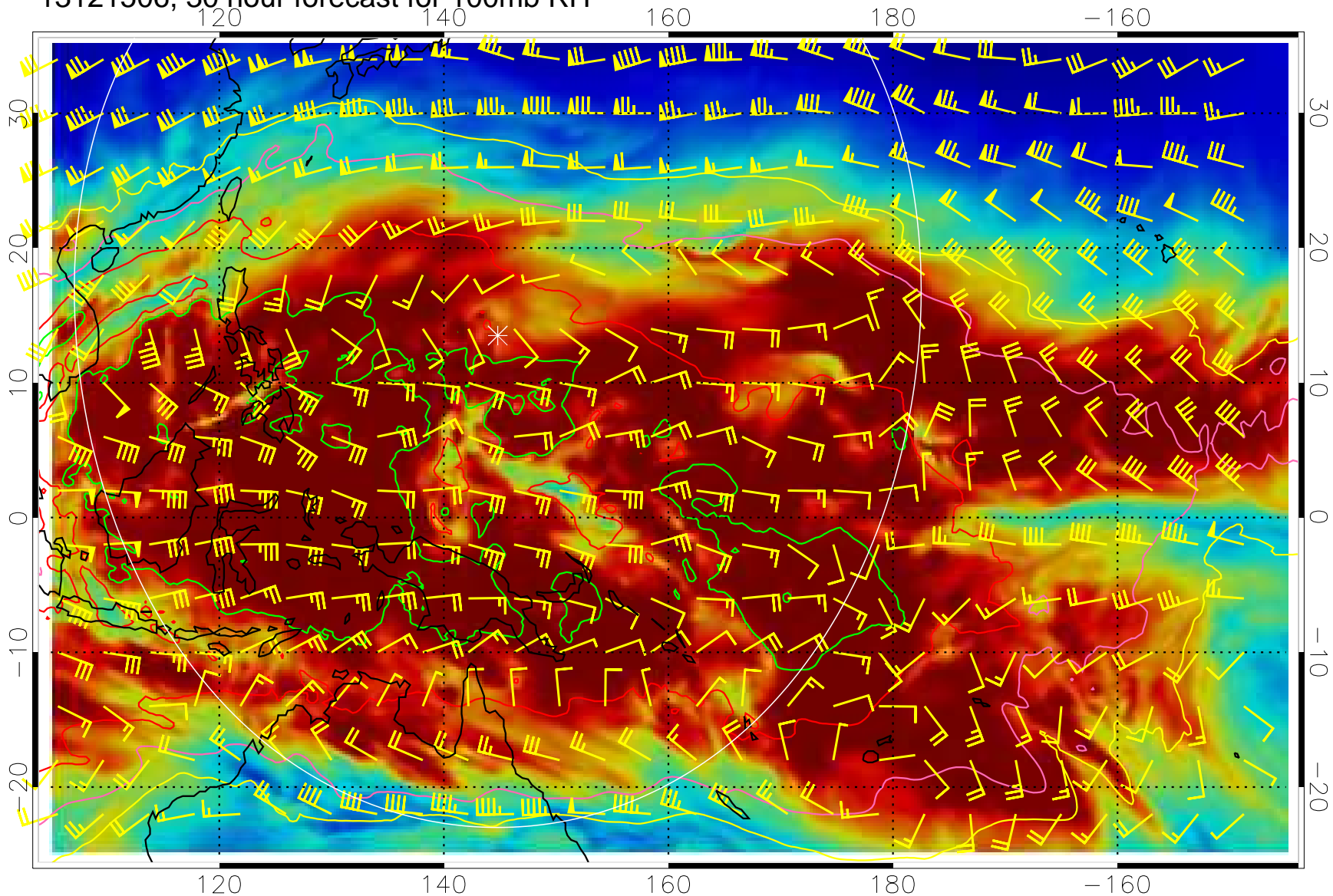


13121500, 24 hour forecast for 100mb RH



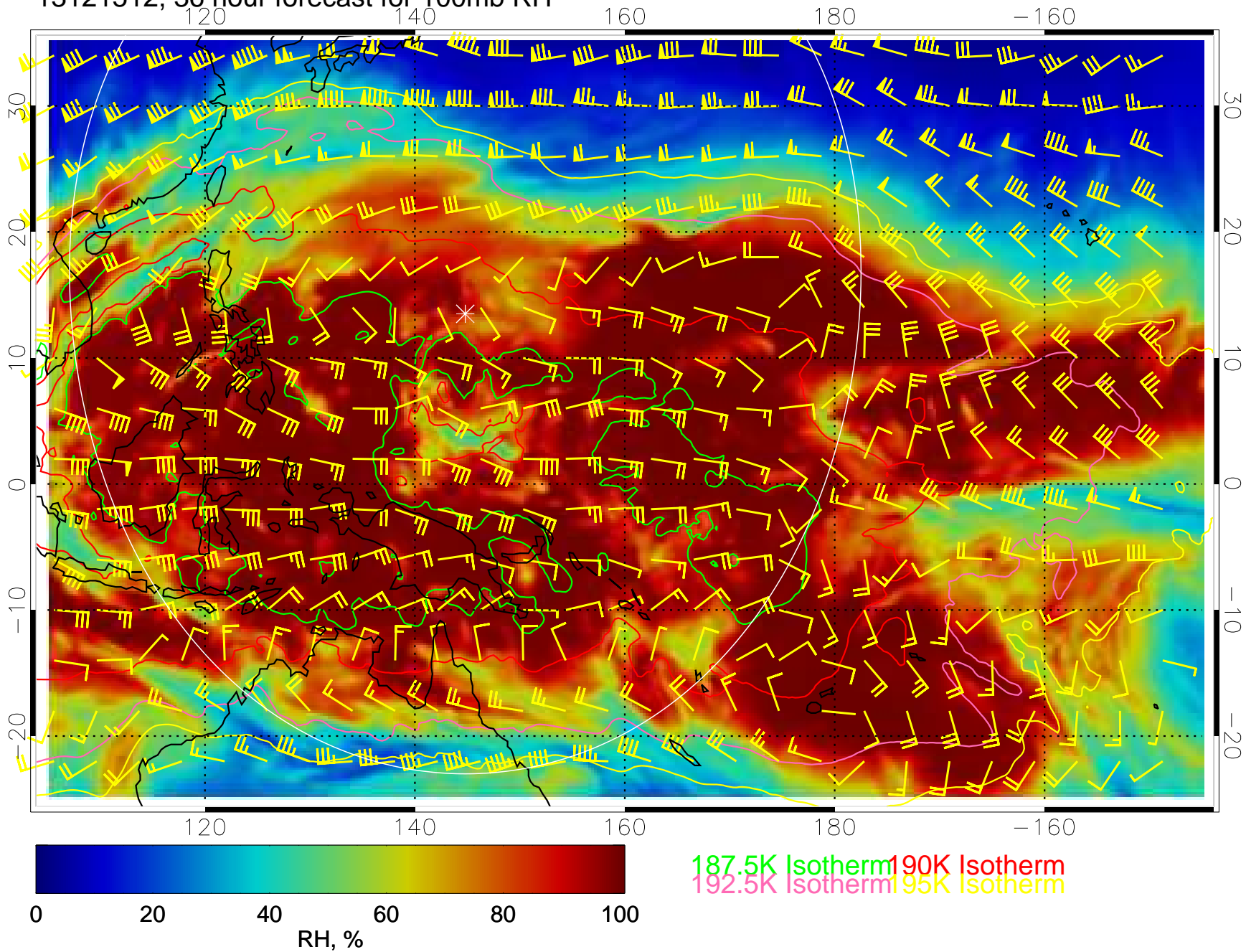
187.5K Isotherm 190K Isotherm  
192.5K Isotherm 195K Isotherm

13121506, 30 hour forecast for 100mb RH



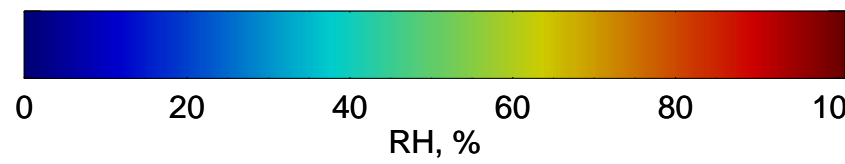
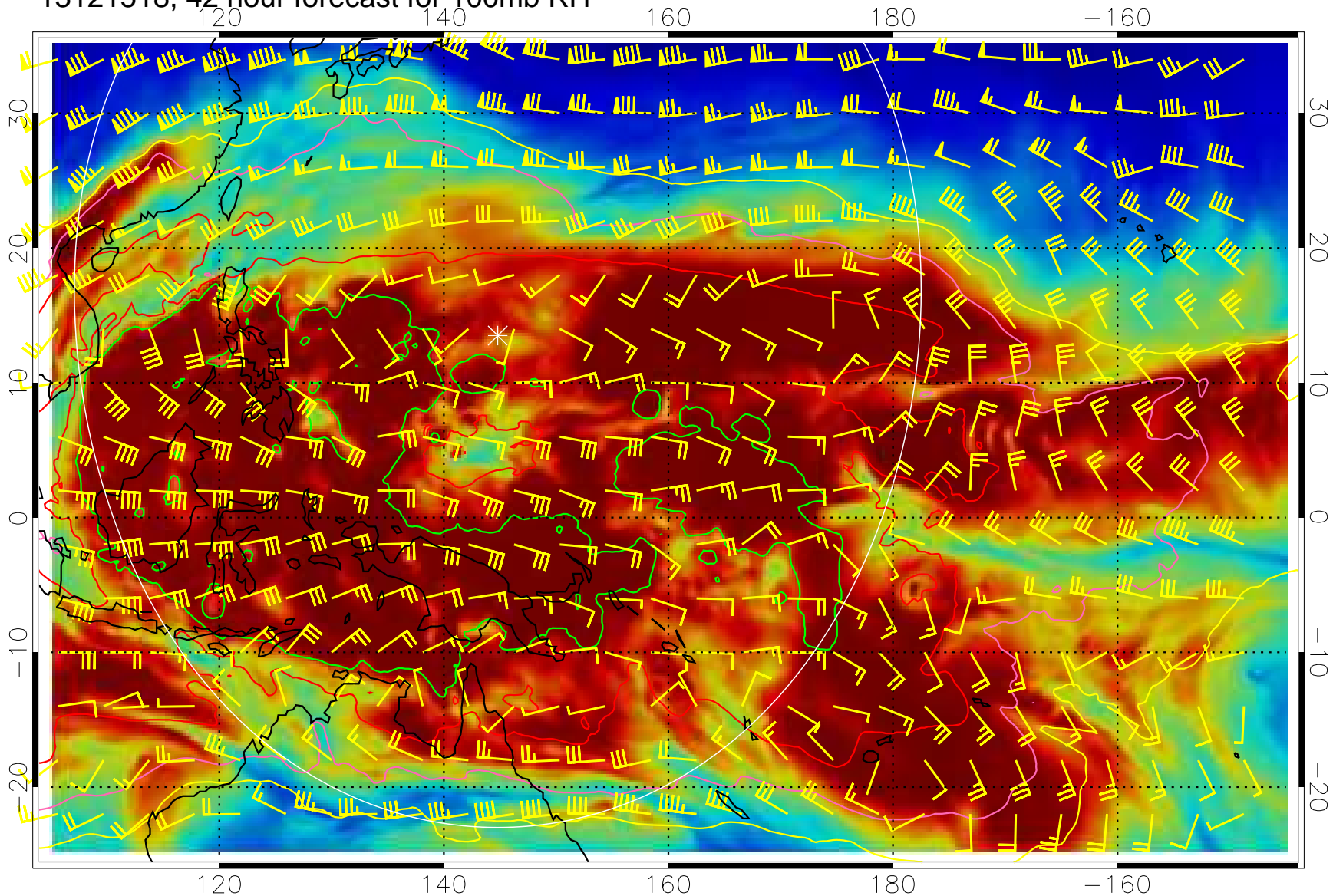
187.5K Isotherm 190K Isotherm  
192.5K Isotherm 195K Isotherm

13121512, 36 hour forecast for 100mb RH



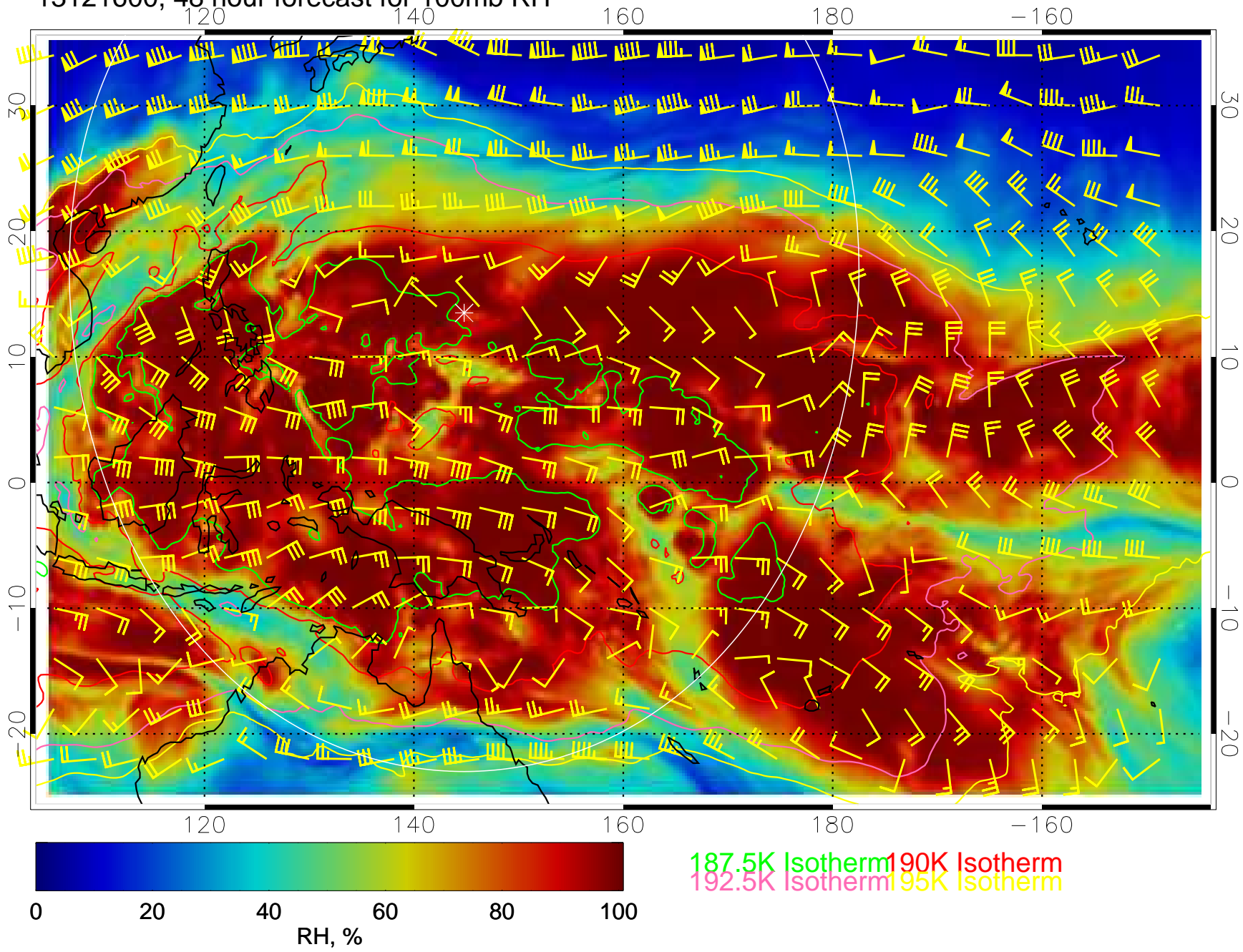


13121518, 42 hour forecast for 100mb RH



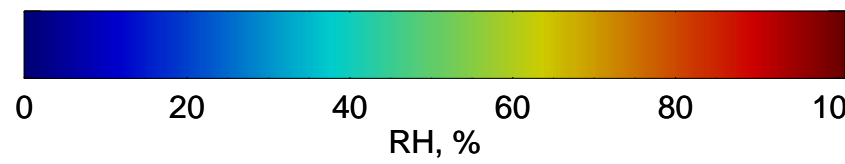
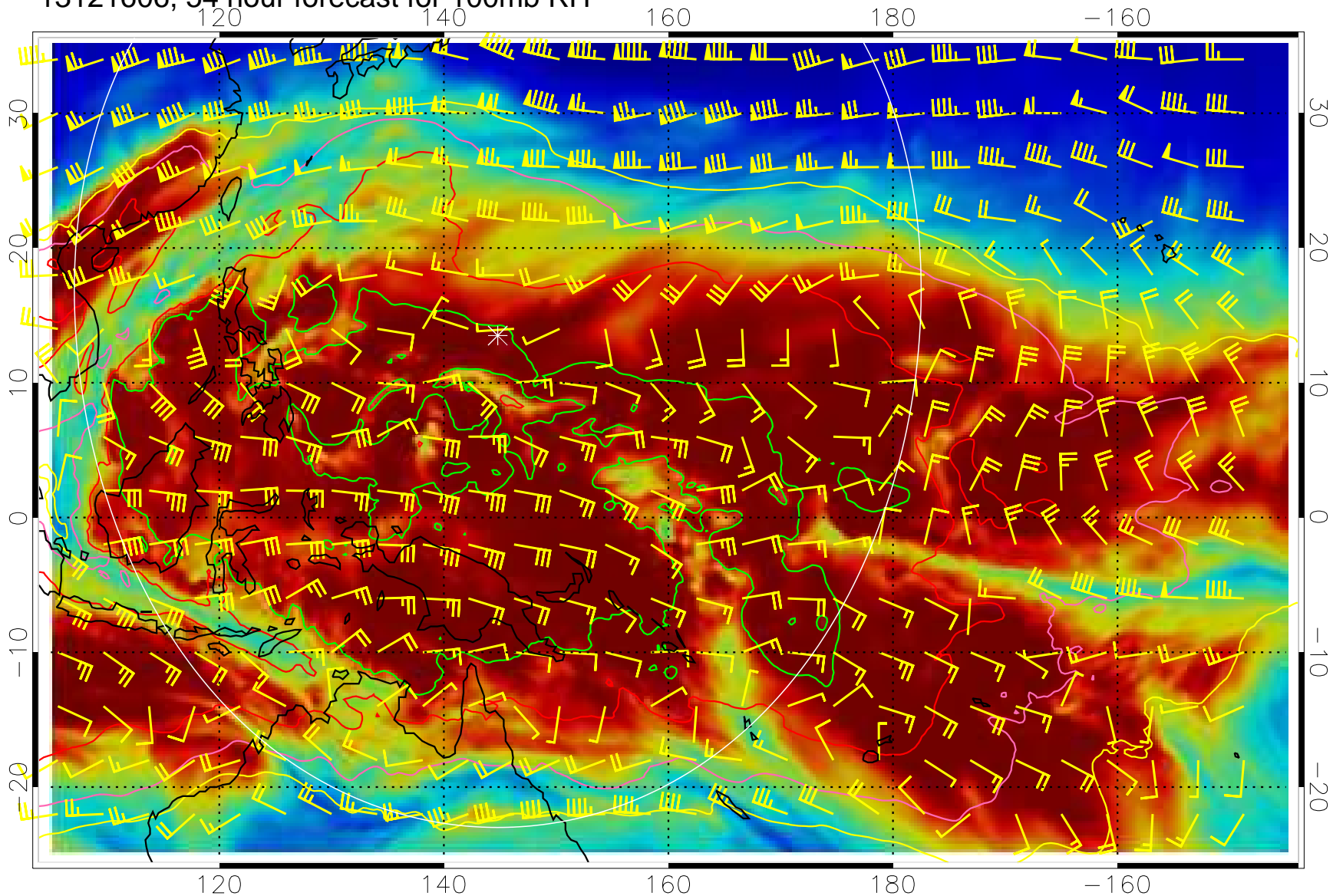
187.5K Isotherm 190K Isotherm  
192.5K Isotherm 195K Isotherm

13121600, 48 hour forecast for 100mb RH



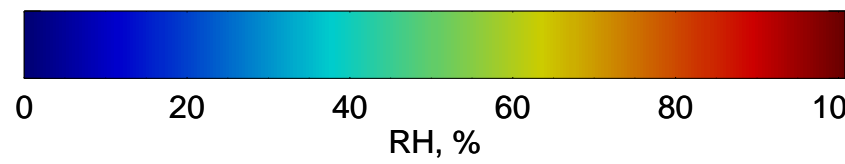
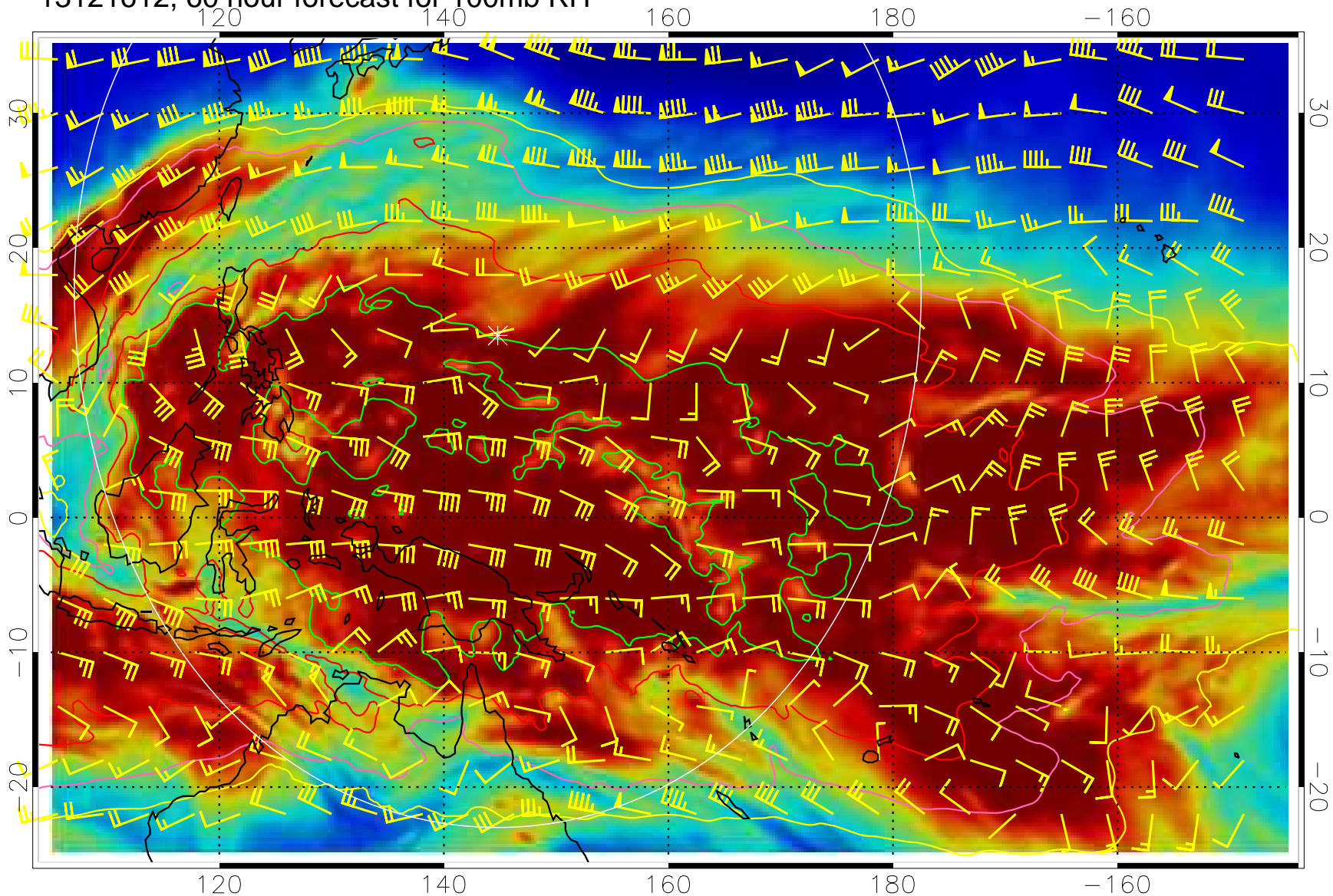


13121606, 54 hour forecast for 100mb RH



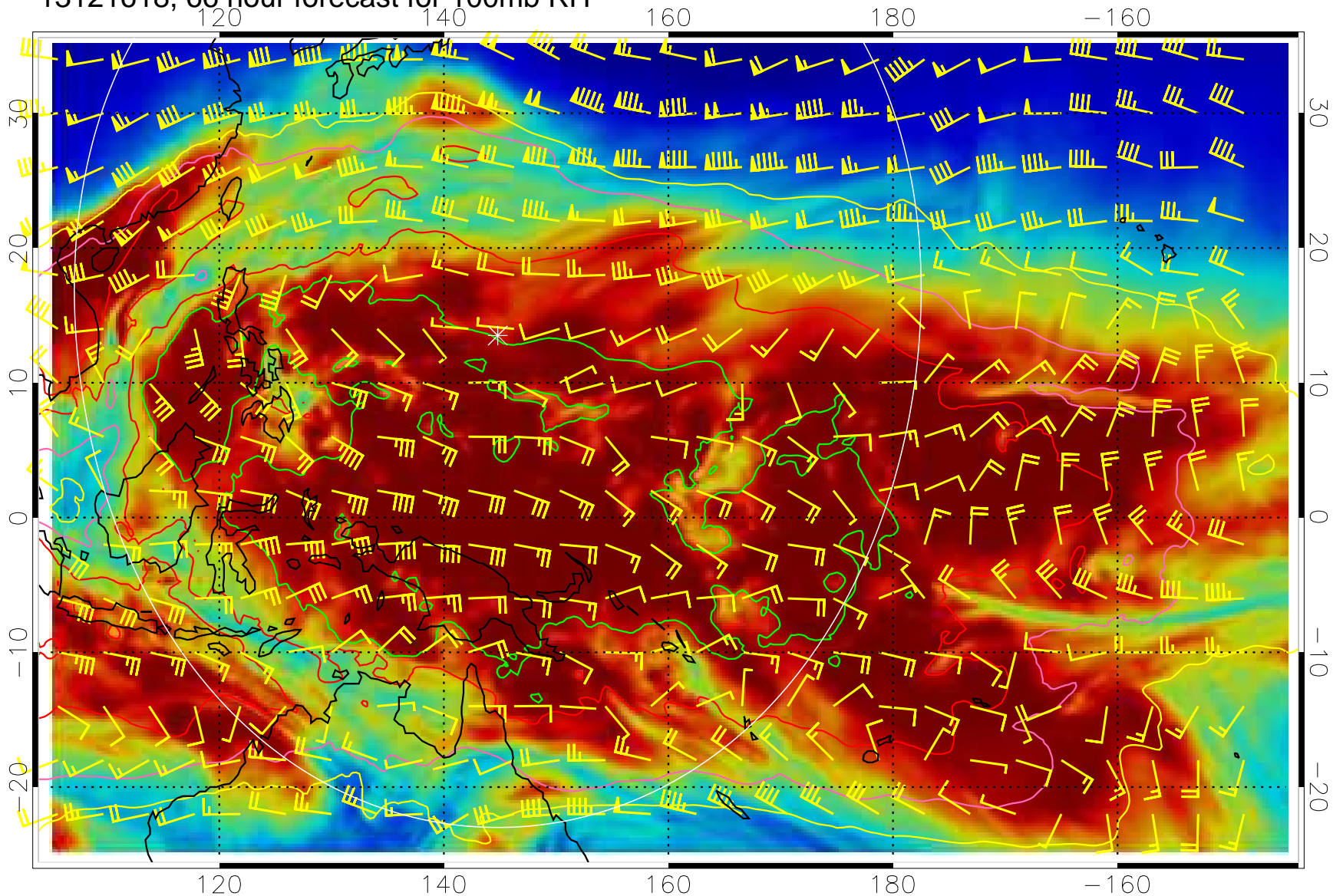
187.5K Isotherm 190K Isotherm  
192.5K Isotherm 195K Isotherm

13121612, 60 hour forecast for 100mb RH



187.5K Isotherm 190K Isotherm  
192.5K Isotherm 195K Isotherm

13121618, 66 hour forecast for 100mb RH

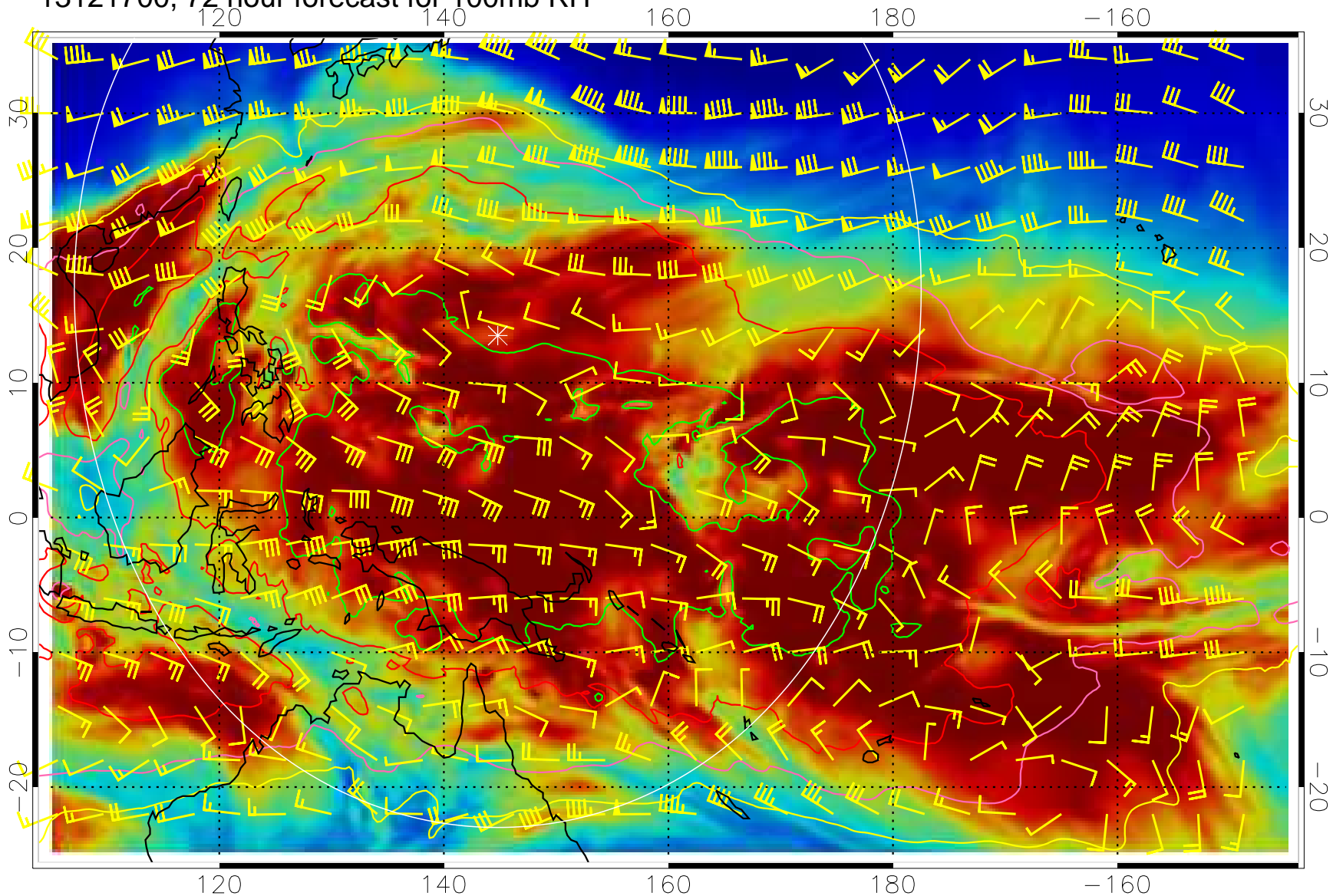


0 20 40 60 80 100  
RH, %

187.5K Isotherm 190K Isotherm  
192.5K Isotherm 195K Isotherm



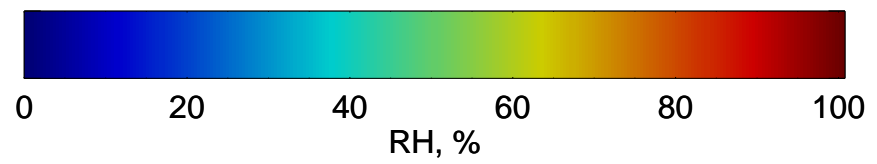
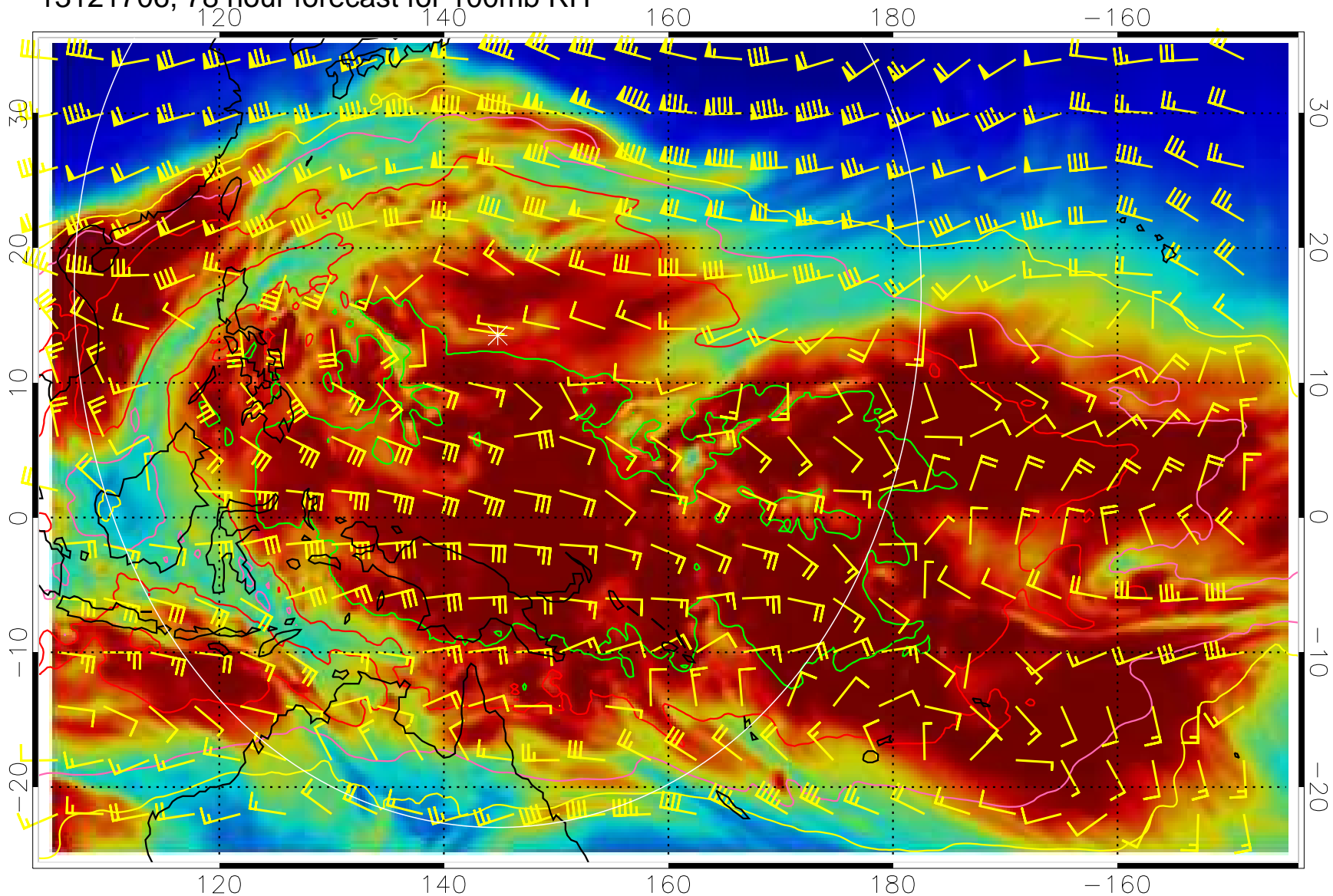
13121700, 72 hour forecast for 100mb RH



0 20 40 60 80 100  
RH, %

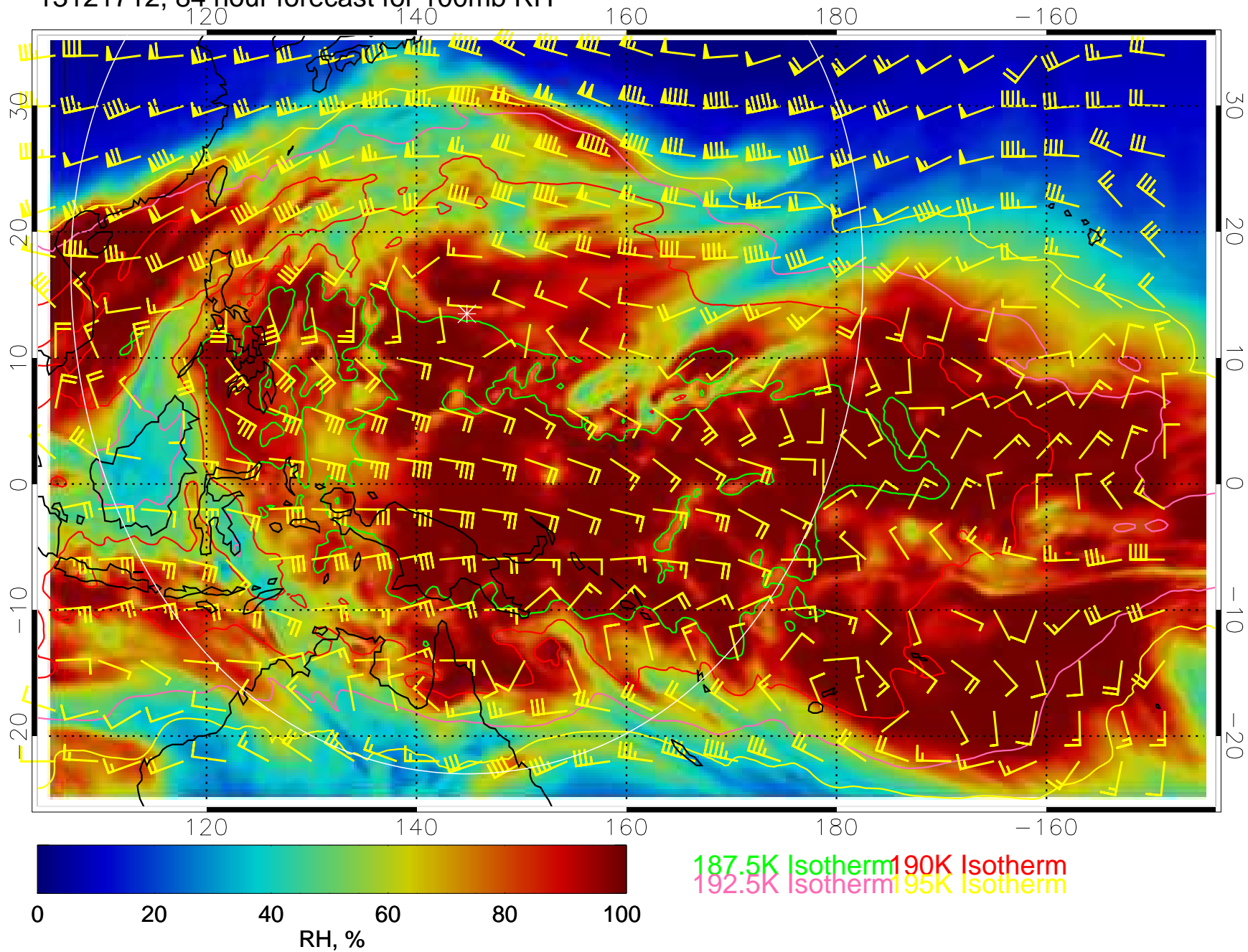
187.5K Isotherm 190K Isotherm  
192.5K Isotherm 195K Isotherm

13121706, 78 hour forecast for 100mb RH



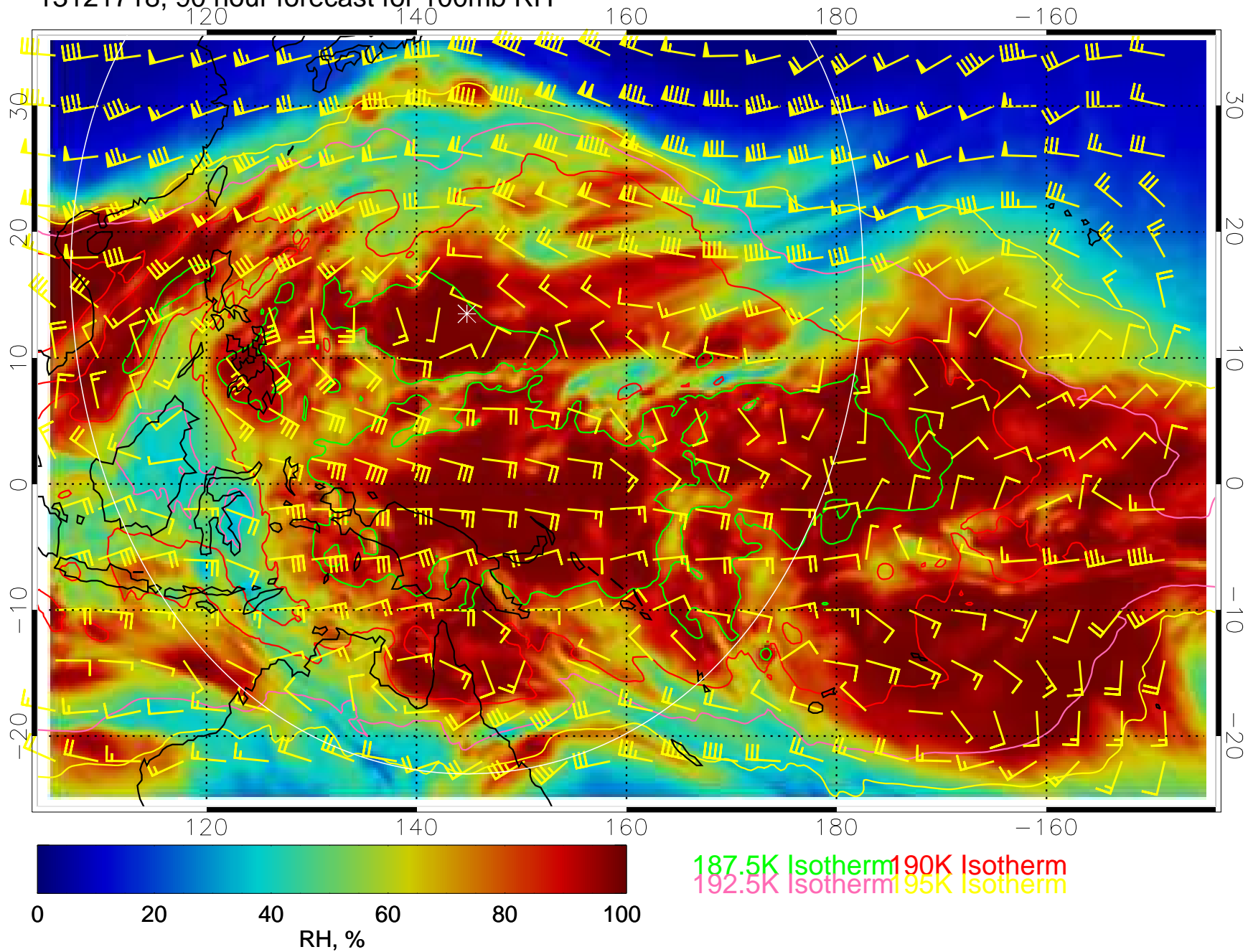
187.5K Isotherm 190K Isotherm  
192.5K Isotherm 195K Isotherm

13121712, 84 hour forecast for 100mb RH

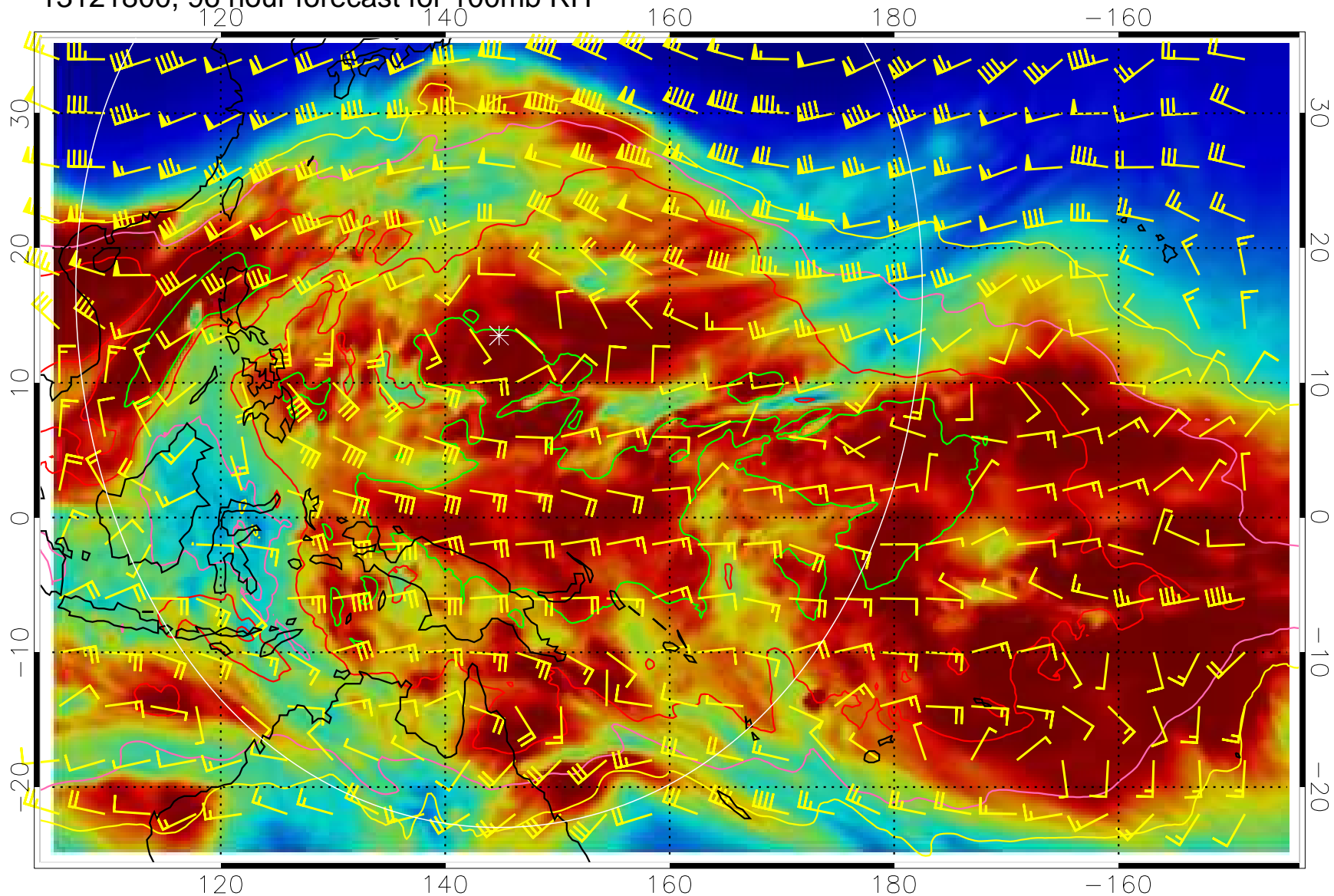




13121718, 90 hour forecast for 100mb RH



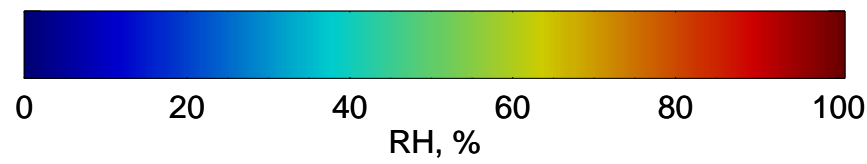
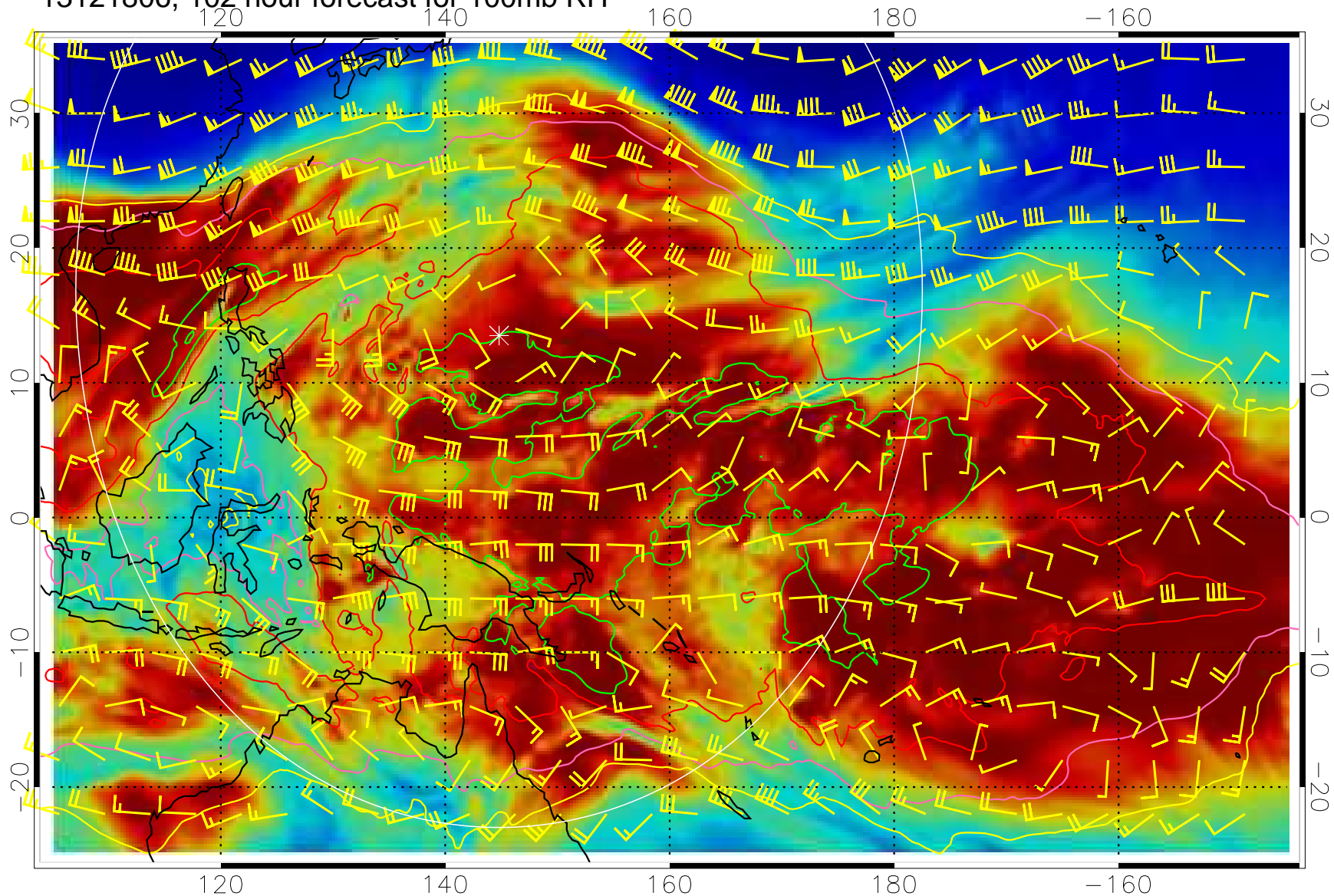
13121800, 96 hour forecast for 100mb RH



0 20 40 60 80 100  
RH, %

187.5K Isotherm 190K Isotherm  
192.5K Isotherm 195K Isotherm

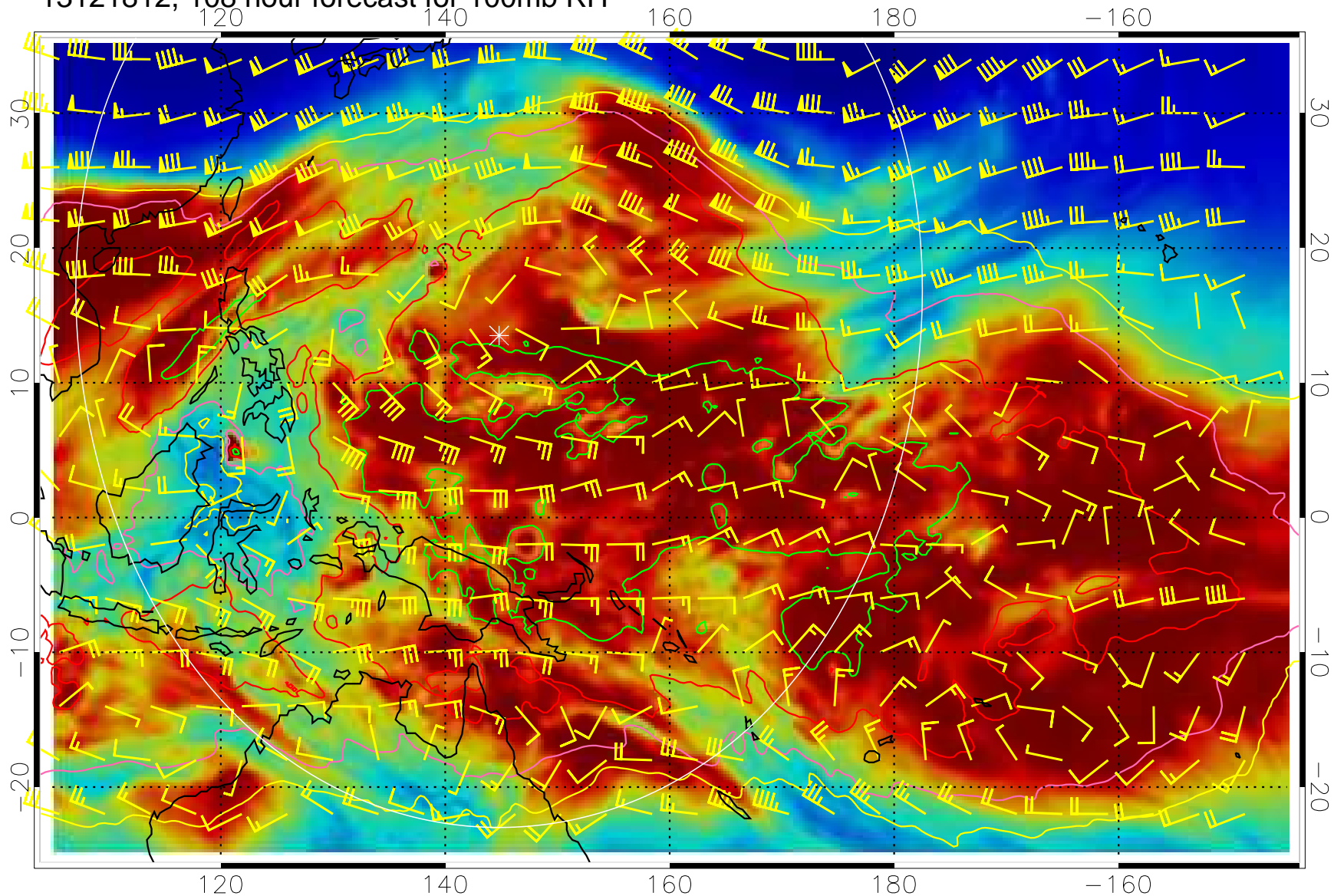
13121806, 102 hour forecast for 100mb RH



187.5K Isotherm 190K Isotherm  
192.5K Isotherm 195K Isotherm



13121812, 108 hour forecast for 100mb RH



0 20 40 60 80 100  
RH, %

187.5K Isotherm 190K Isotherm  
192.5K Isotherm 195K Isotherm

13121818, 114 hour forecast for 100mb RH

