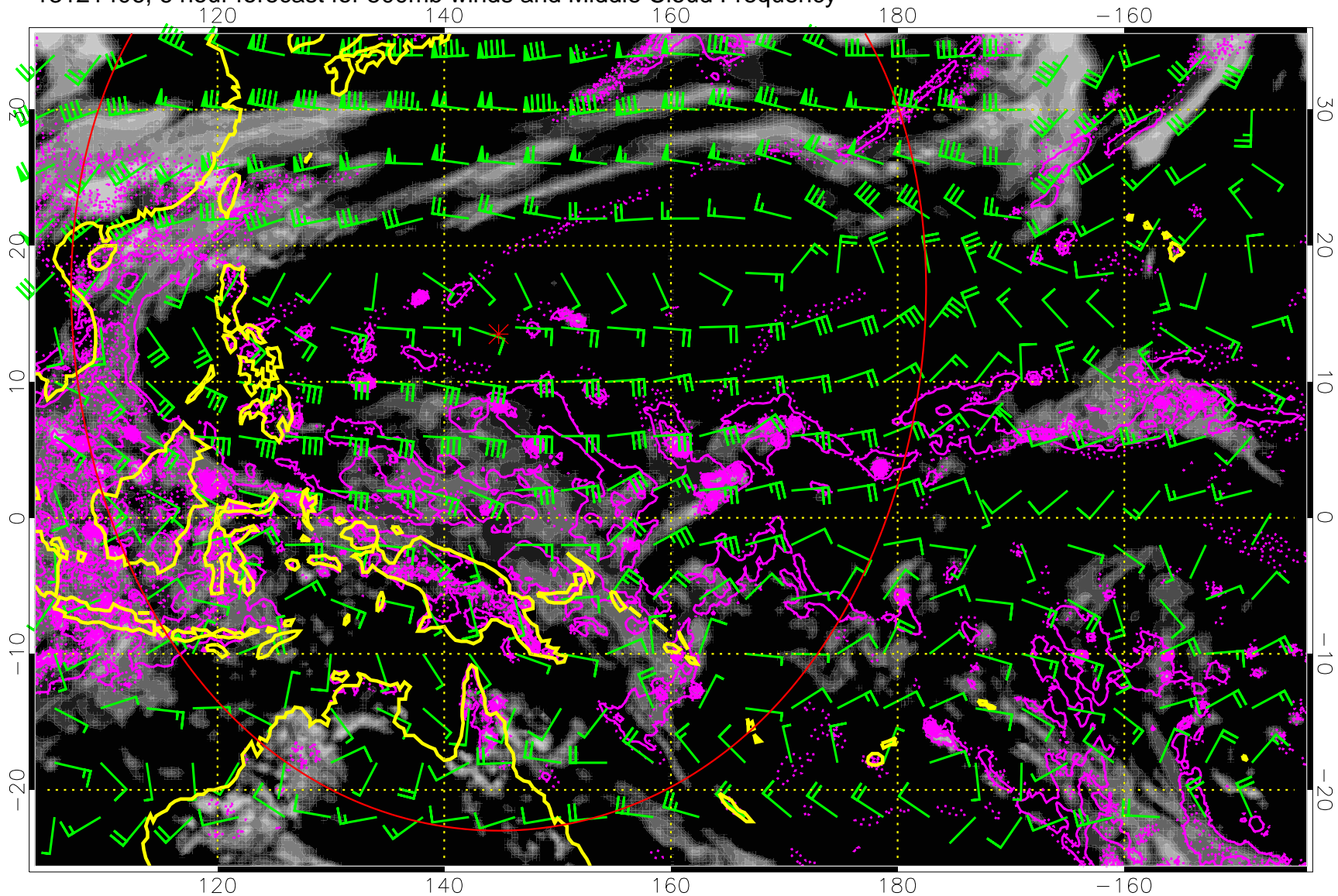
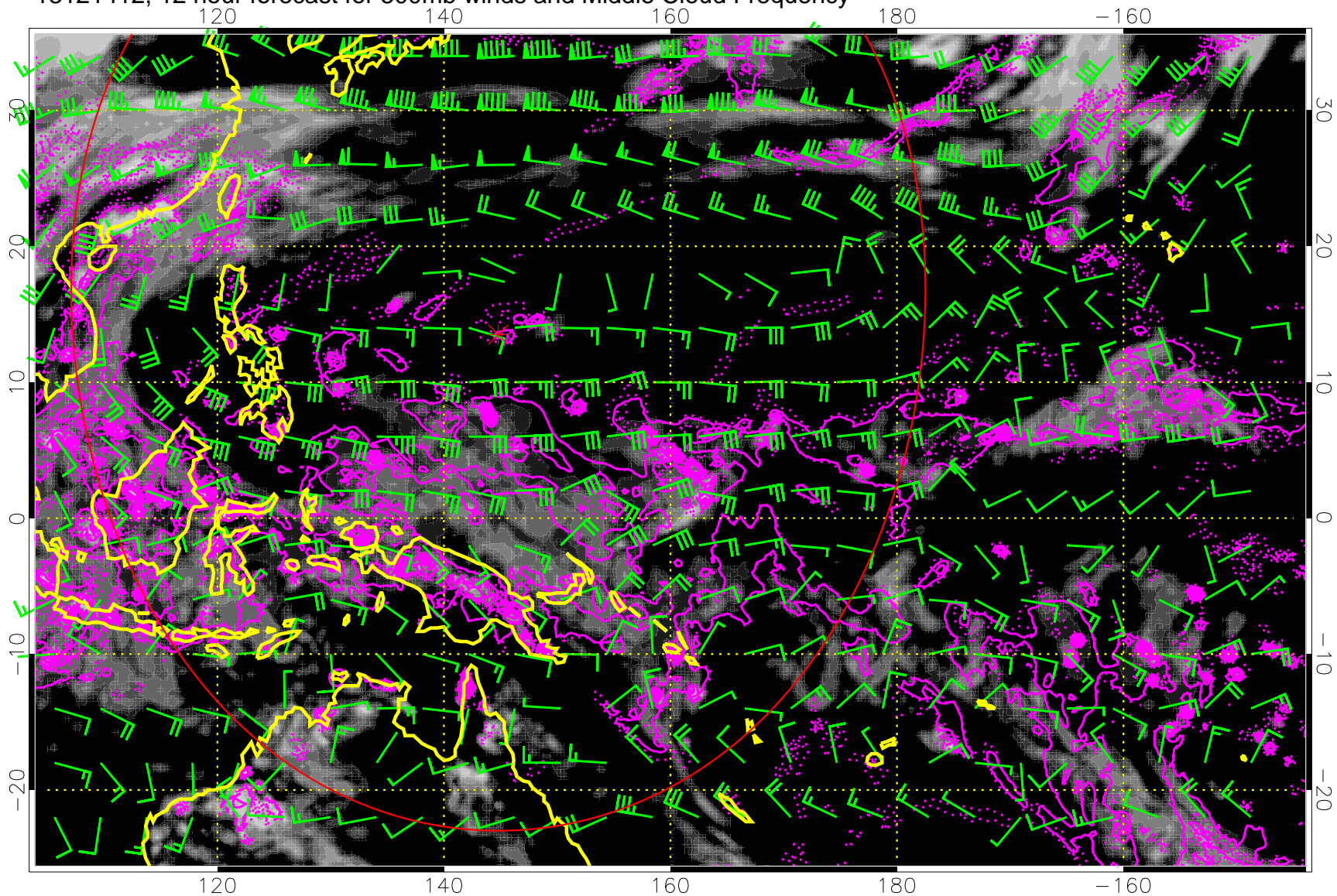


13121406, 6 hour forecast for 500mb winds and Middle Cloud Frequency



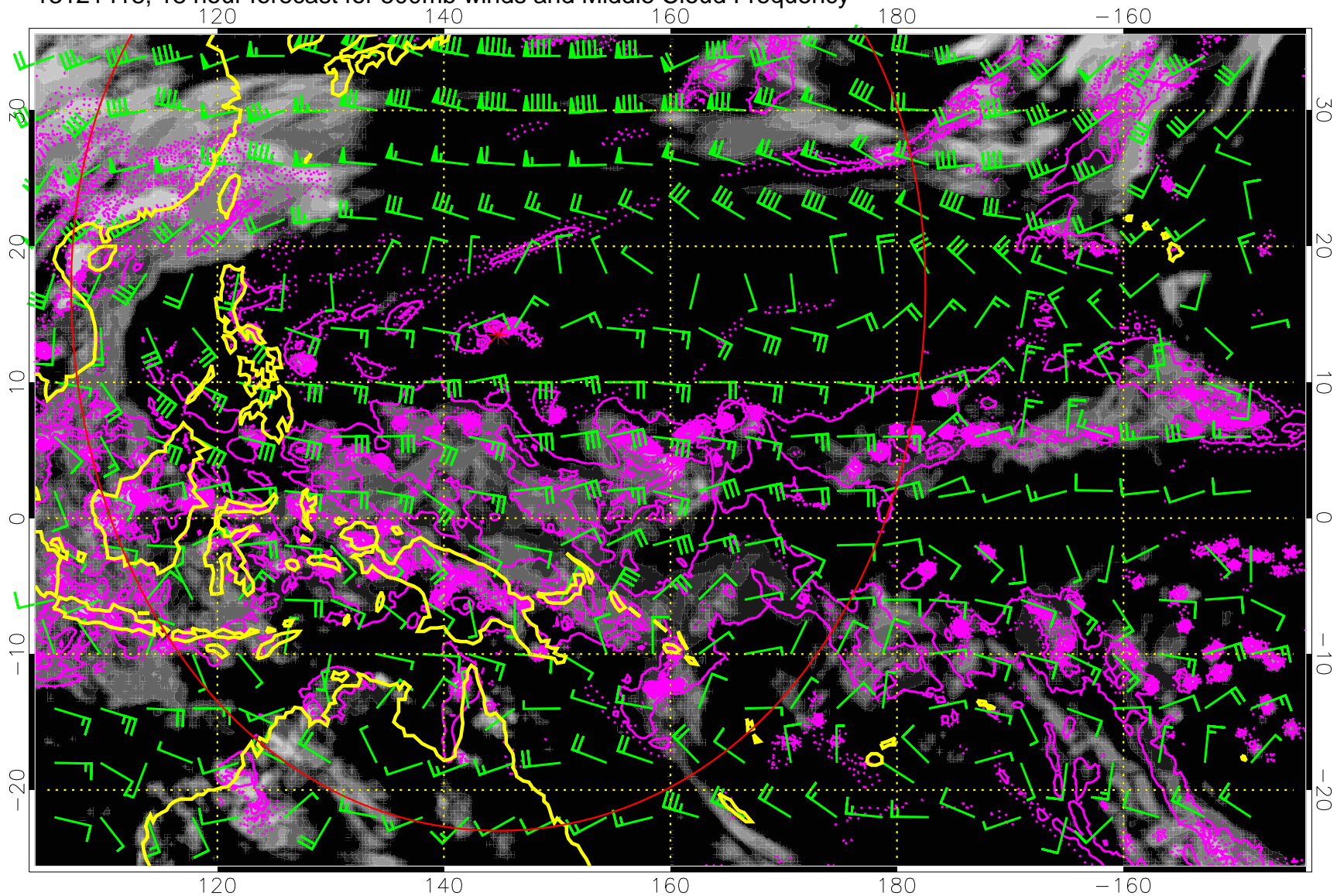
Precip (tot dot, conv sol) 6 mm/day contours, min 4

13121412, 12 hour forecast for 500mb winds and Middle Cloud Frequency



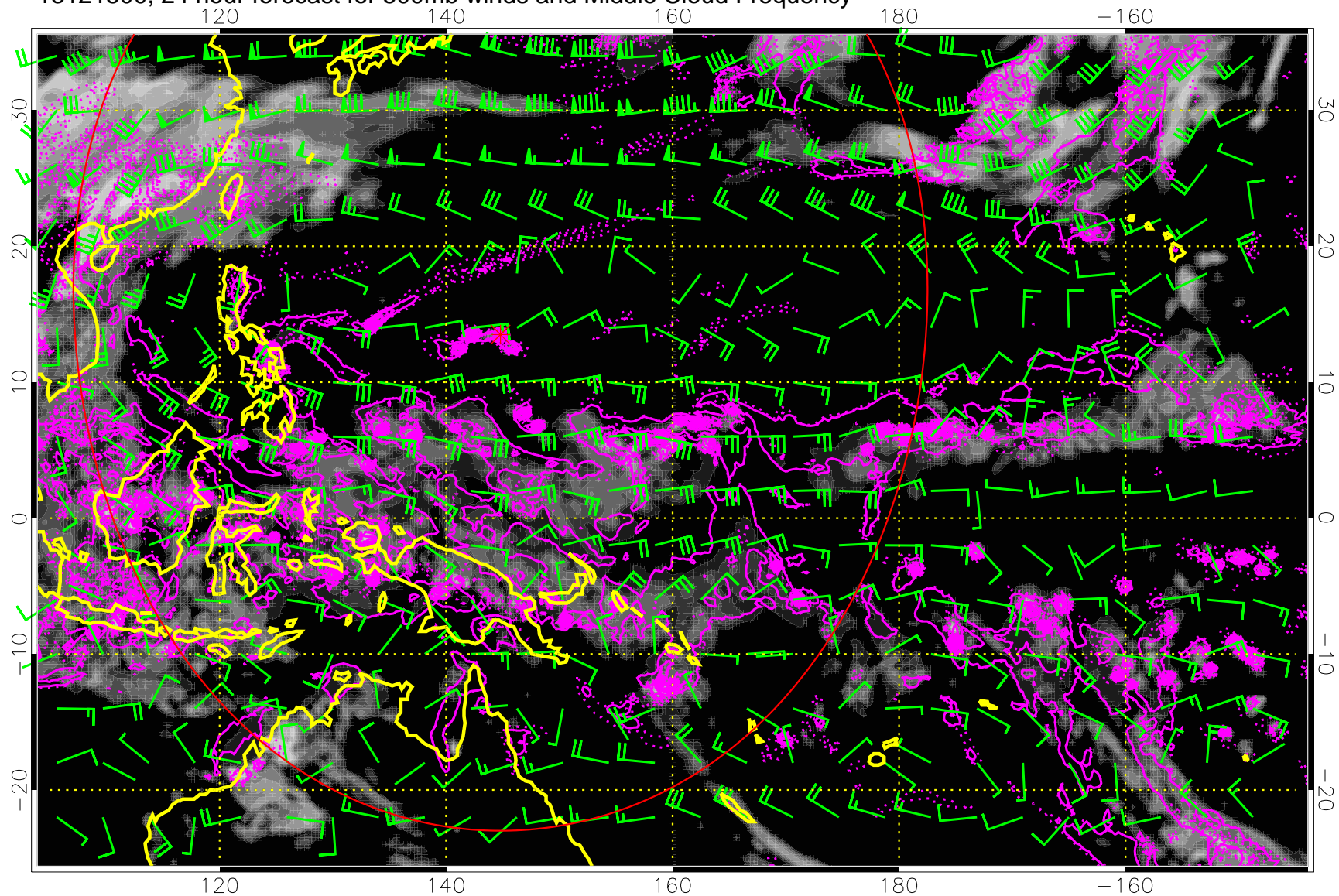
Precip (tot dot, conv sol) 6 mm/day contours, min 4

13121418, 18 hour forecast for 500mb winds and Middle Cloud Frequency



Precip (tot dot, conv sol) 6 mm/day contours, min 4

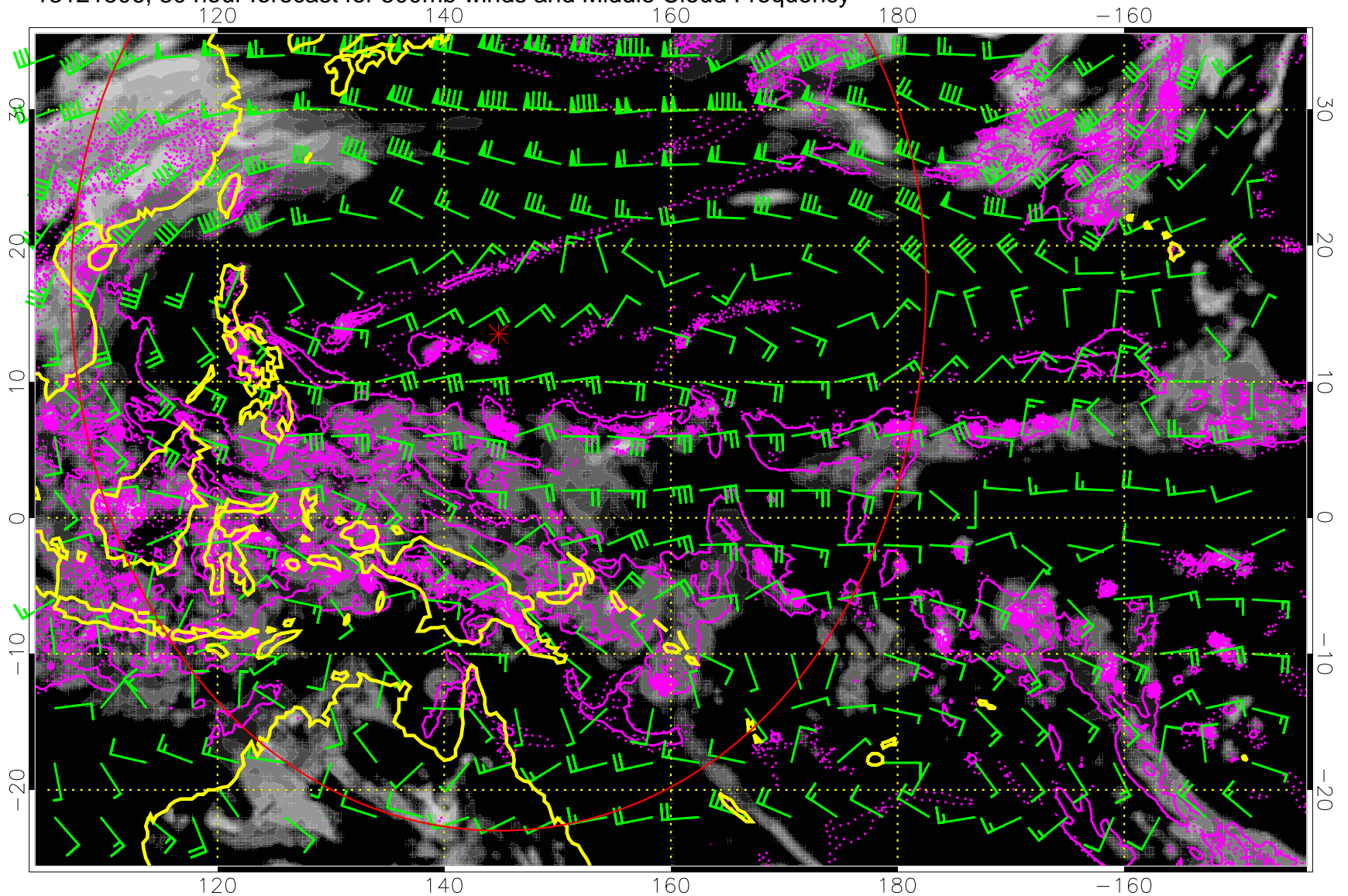
13121500, 24 hour forecast for 500mb winds and Middle Cloud Frequency



Middle Cloud Frequency

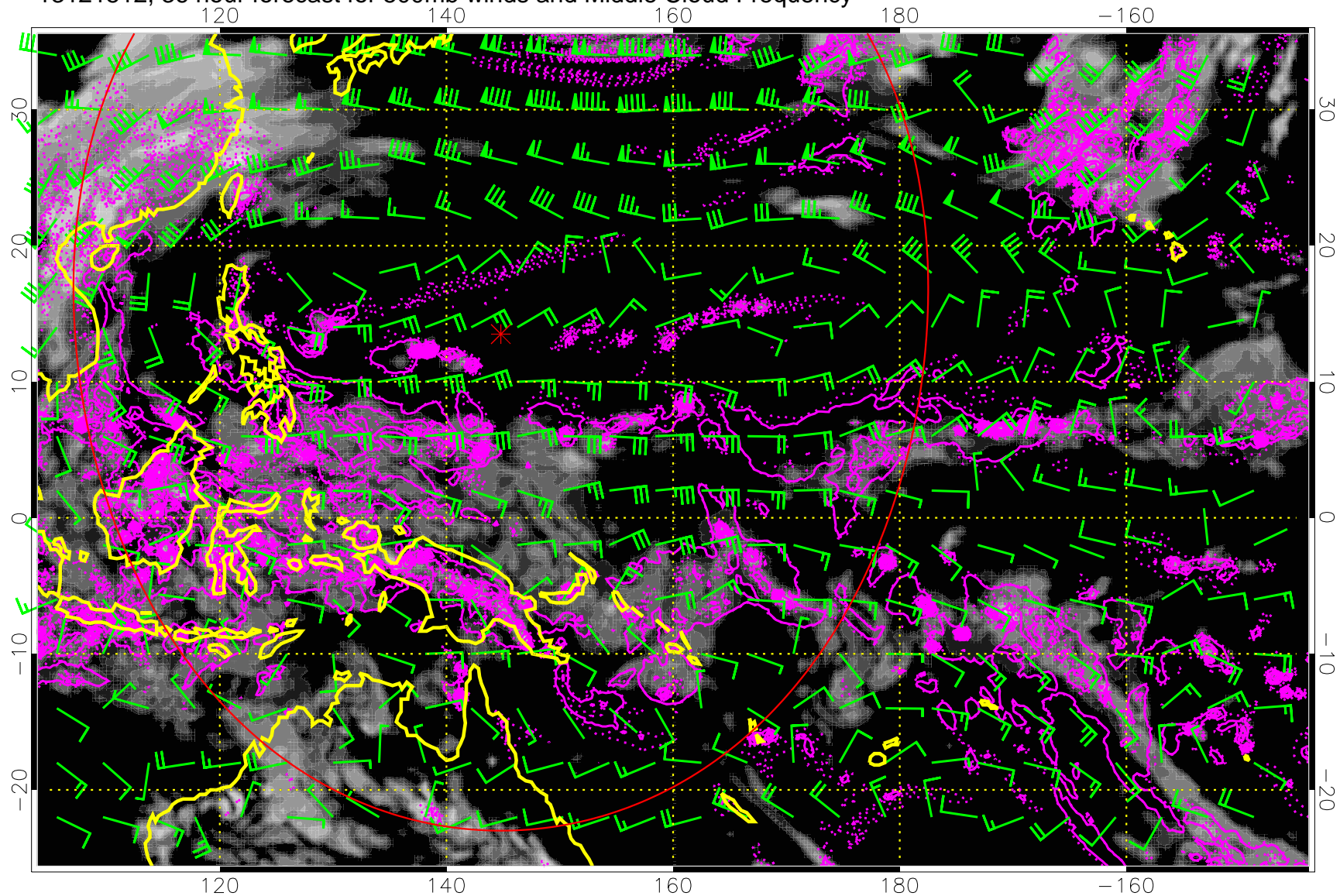
Precip (tot dot, conv sol) 6 mm/day contours, min 4

13121506, 30 hour forecast for 500mb winds and Middle Cloud Frequency



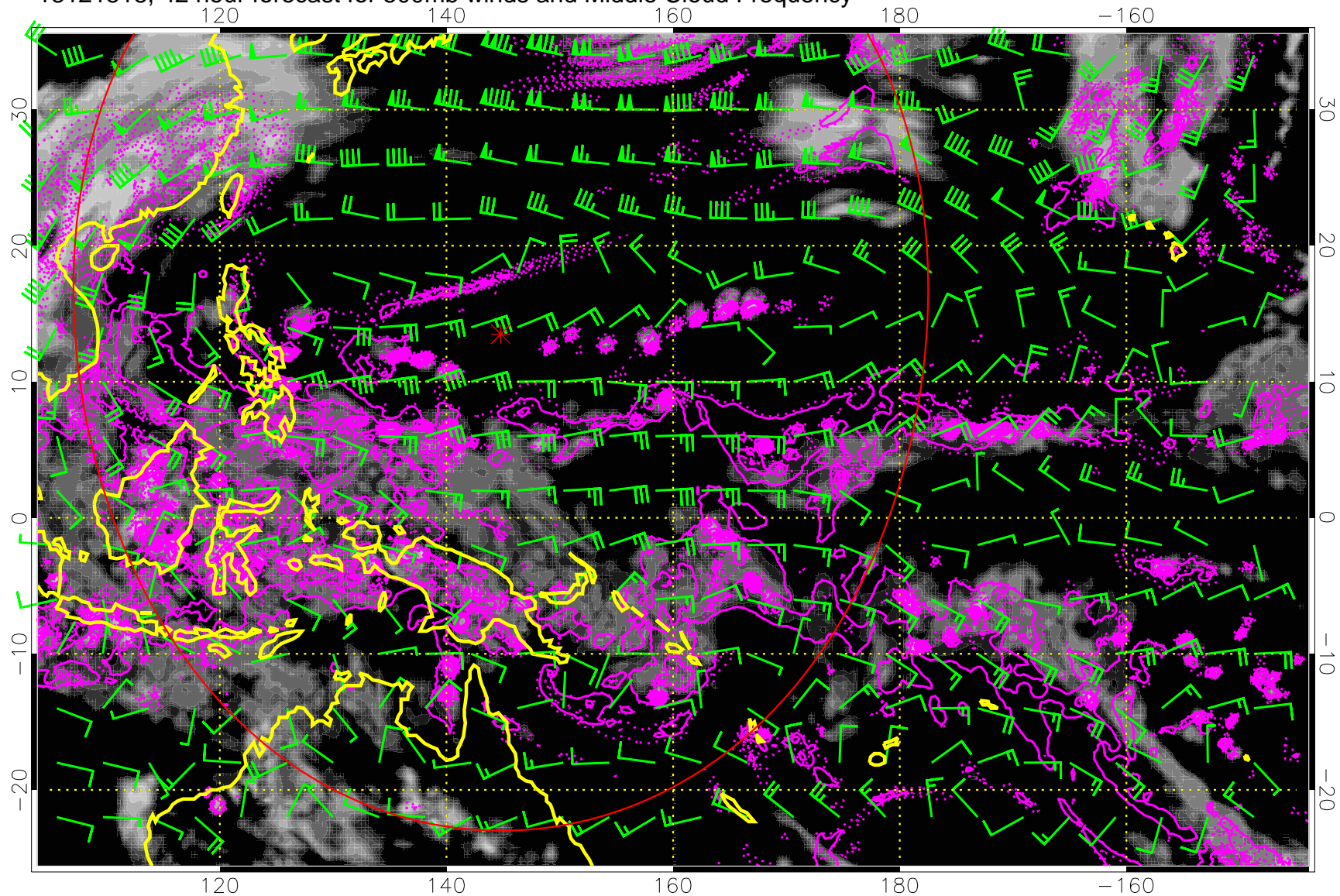
Precip (tot dot, conv sol) 6 mm/day contours, min 4

13121512, 36 hour forecast for 500mb winds and Middle Cloud Frequency



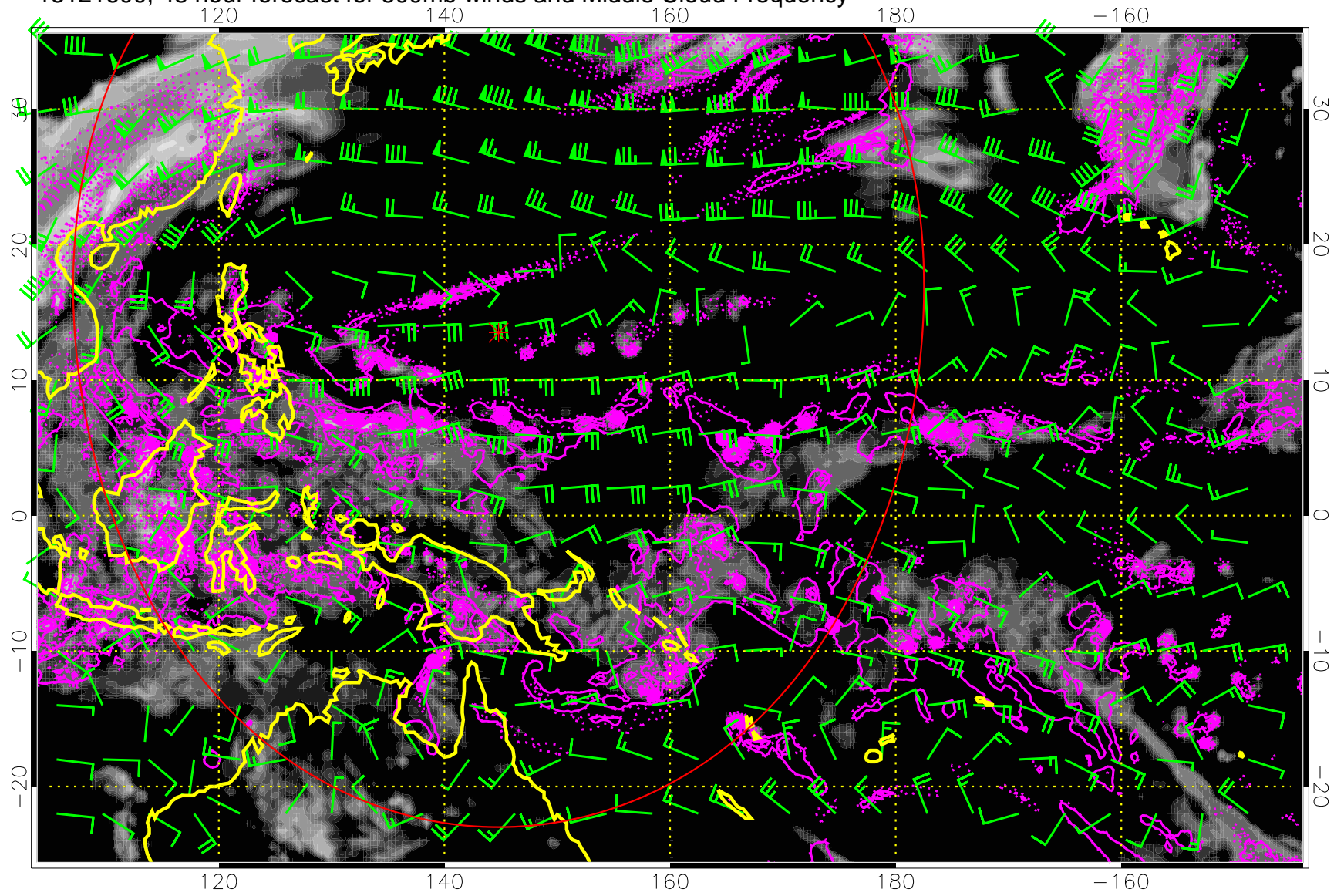
Precip (tot dot, conv sol) 6 mm/day contours, min 4

13121518, 42 hour forecast for 500mb winds and Middle Cloud Frequency



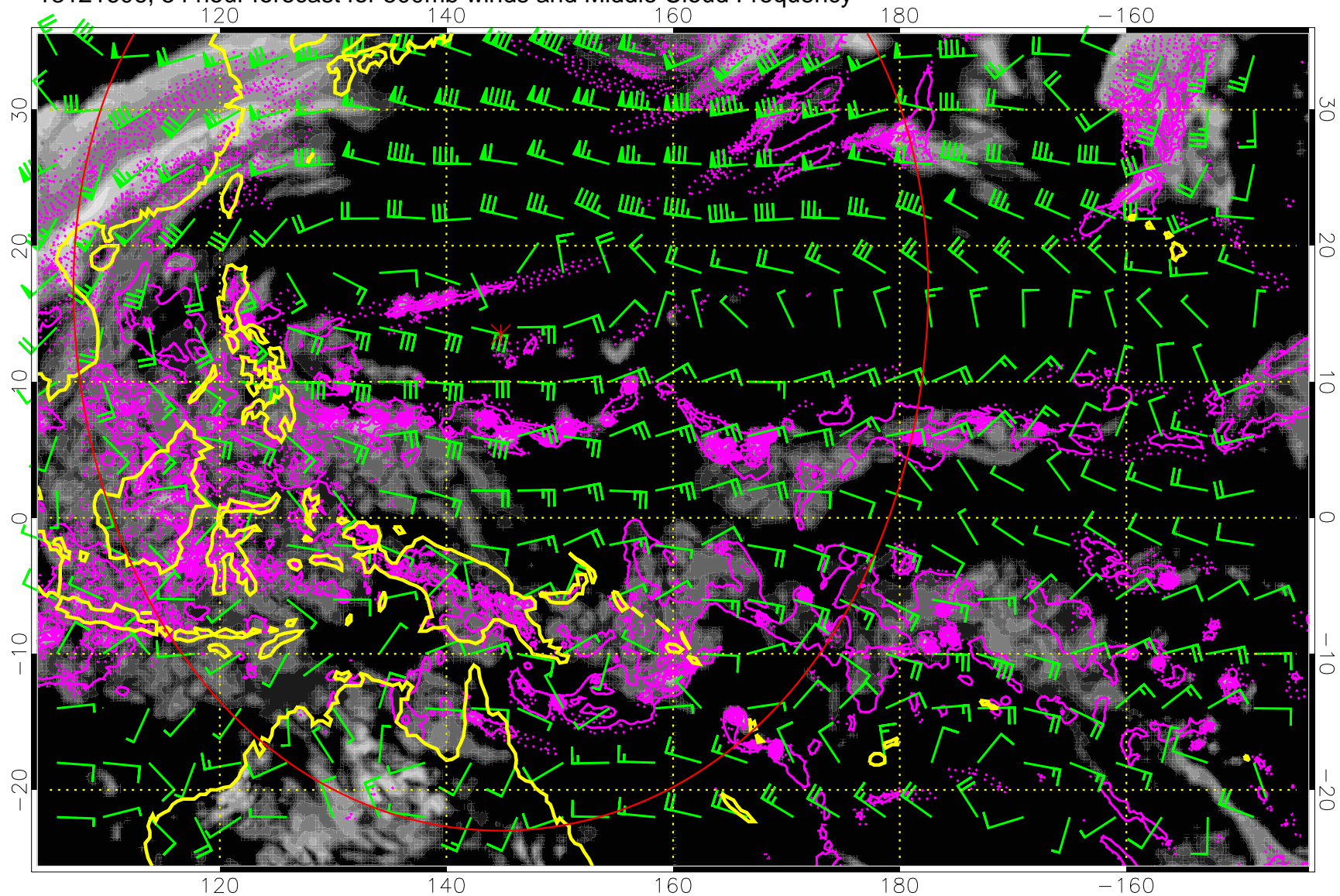
Precip (tot dot, conv sol) 6 mm/day contours, min 4

13121600, 48 hour forecast for 500mb winds and Middle Cloud Frequency



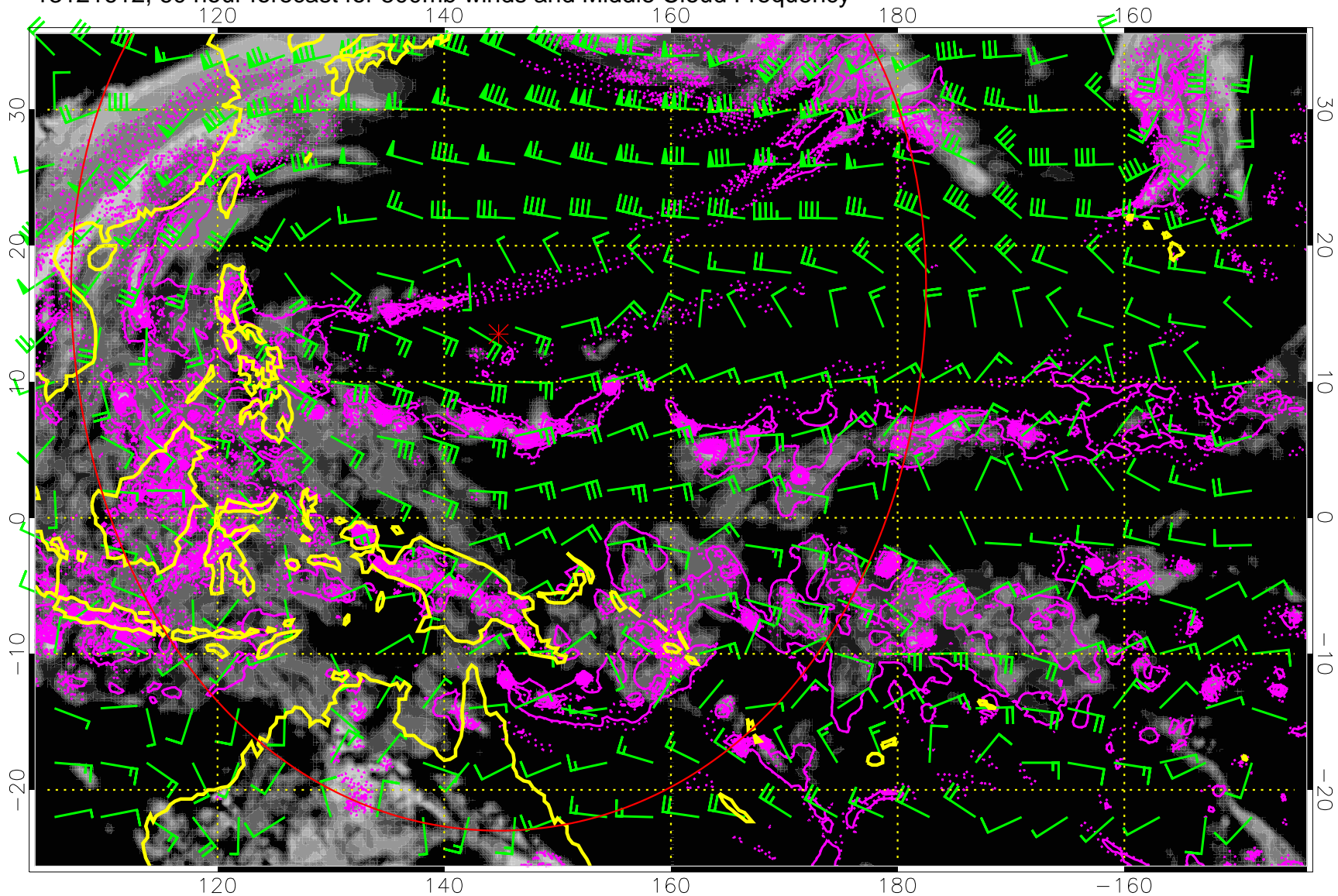
Precip (tot dot, conv sol) 6 mm/day contours, min 4

13121606, 54 hour forecast for 500mb winds and Middle Cloud Frequency



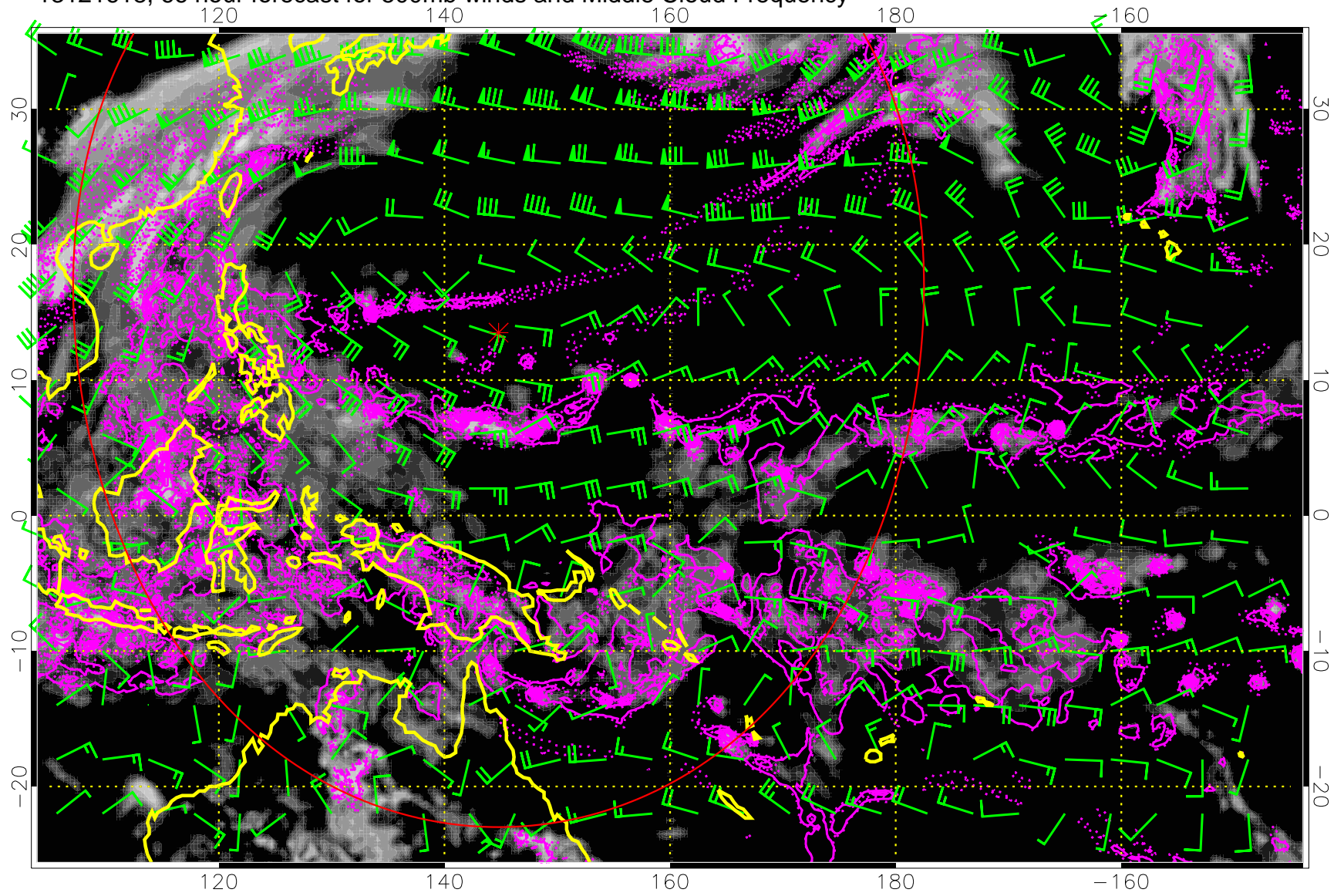
Precip (tot dot, conv sol) 6 mm/day contours, min 4

13121612, 60 hour forecast for 500mb winds and Middle Cloud Frequency



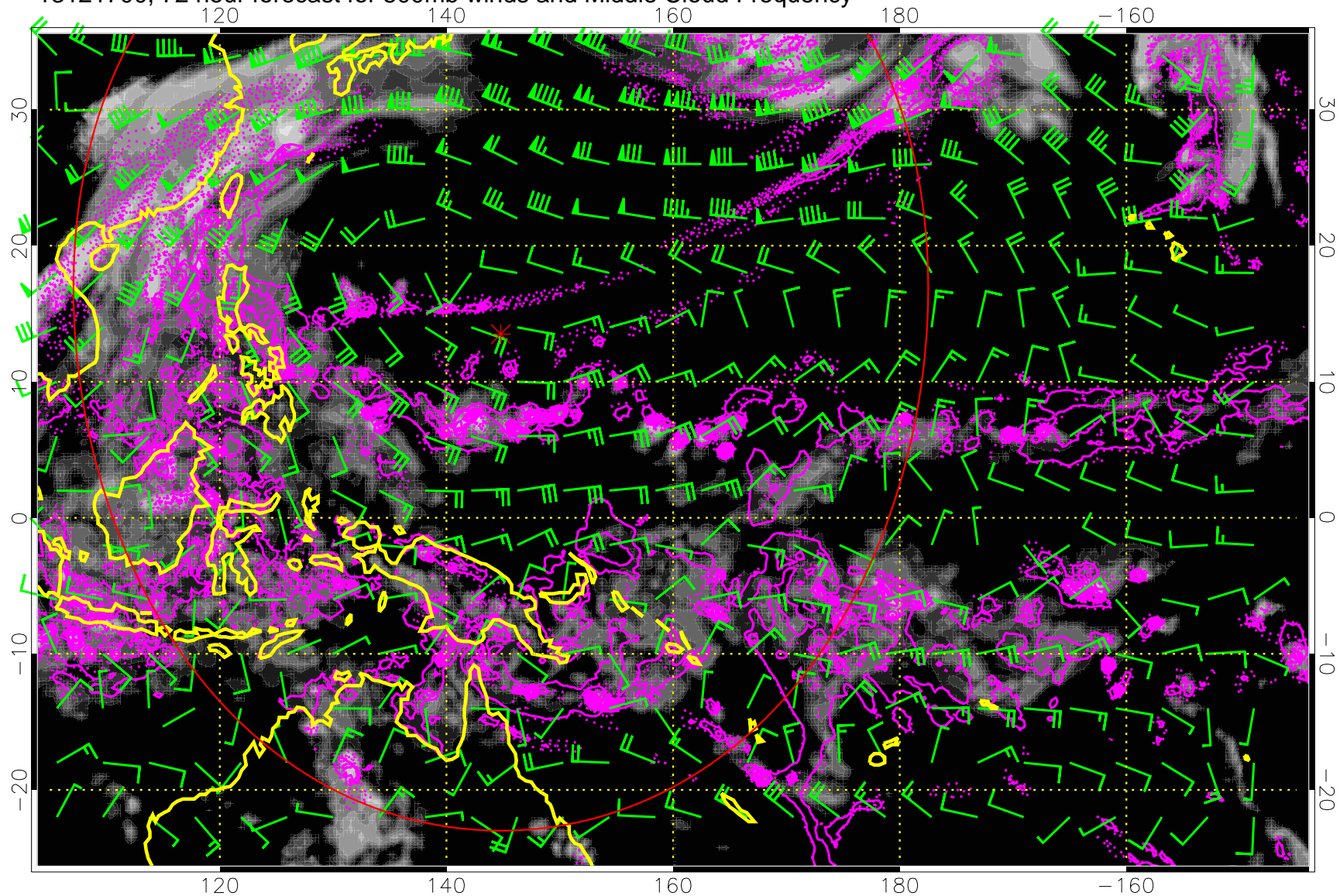
Precip (tot dot, conv sol) 6 mm/day contours, min 4

13121618, 66 hour forecast for 500mb winds and Middle Cloud Frequency



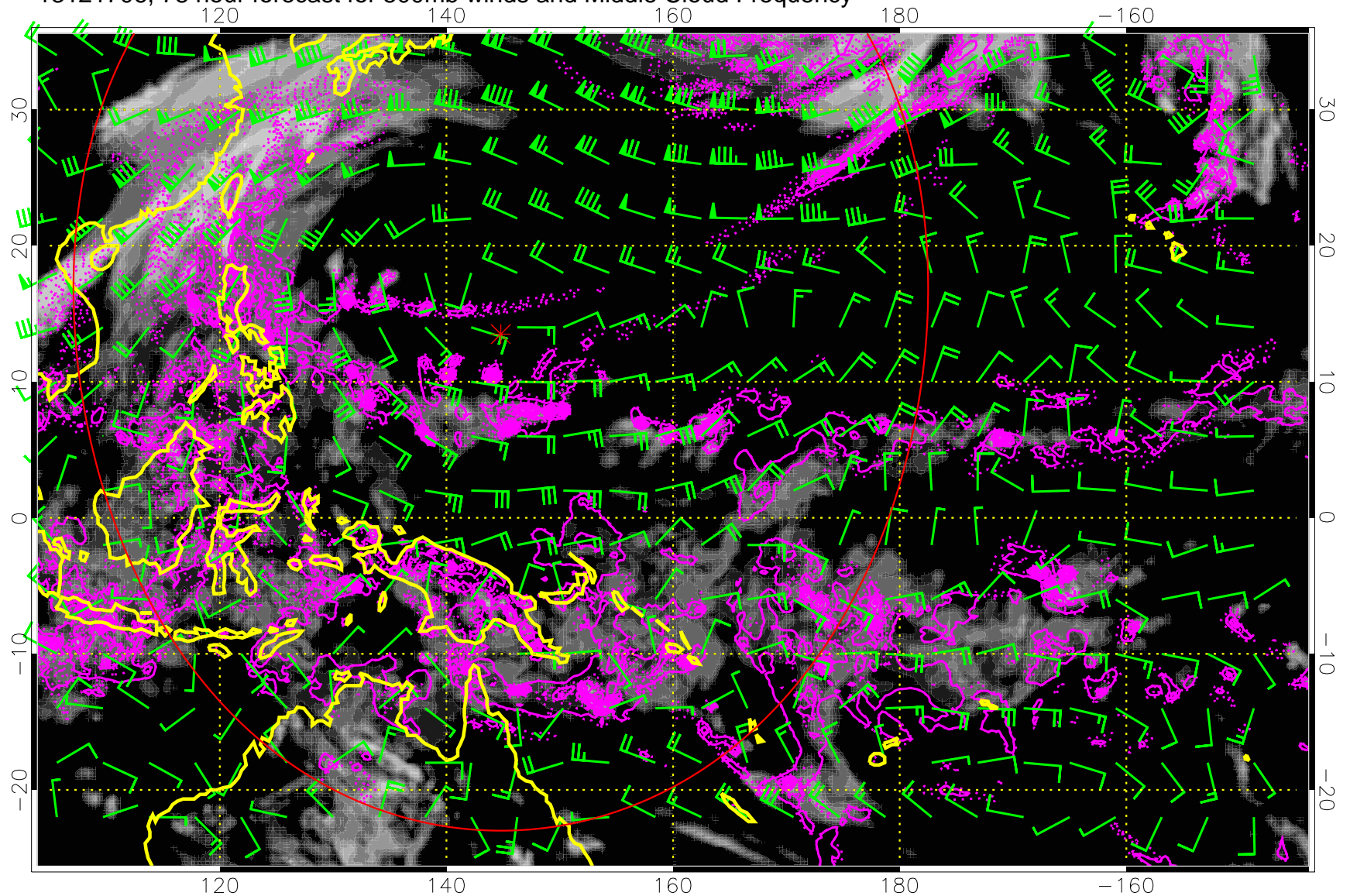
Precip (tot dot, conv sol) 6 mm/day contours, min 4

13121700, 72 hour forecast for 500mb winds and Middle Cloud Frequency



Precip (tot dot, conv sol) 6 mm/day contours, min 4

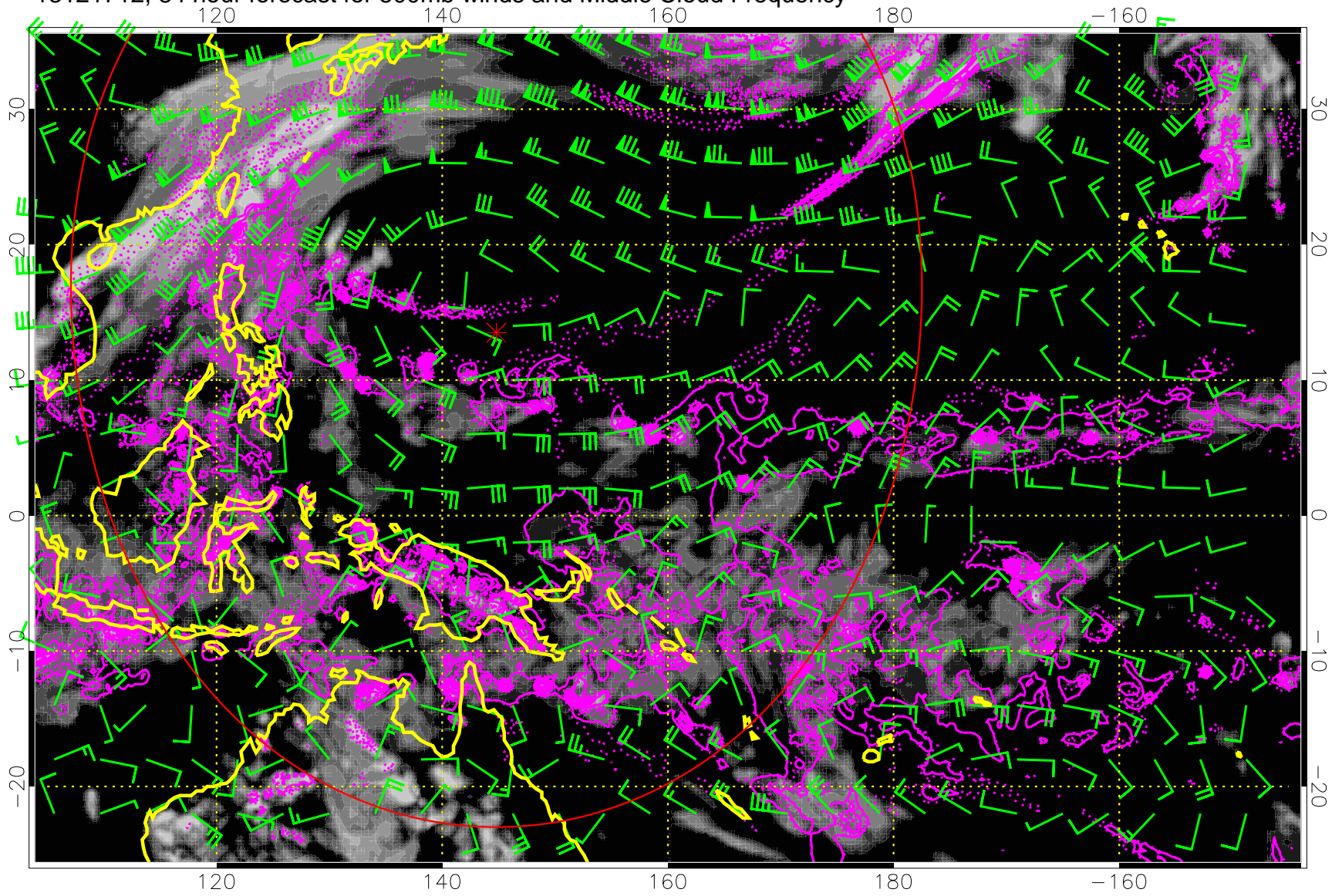
13121706, 78 hour forecast for 500mb winds and Middle Cloud Frequency



Middle Cloud Frequency

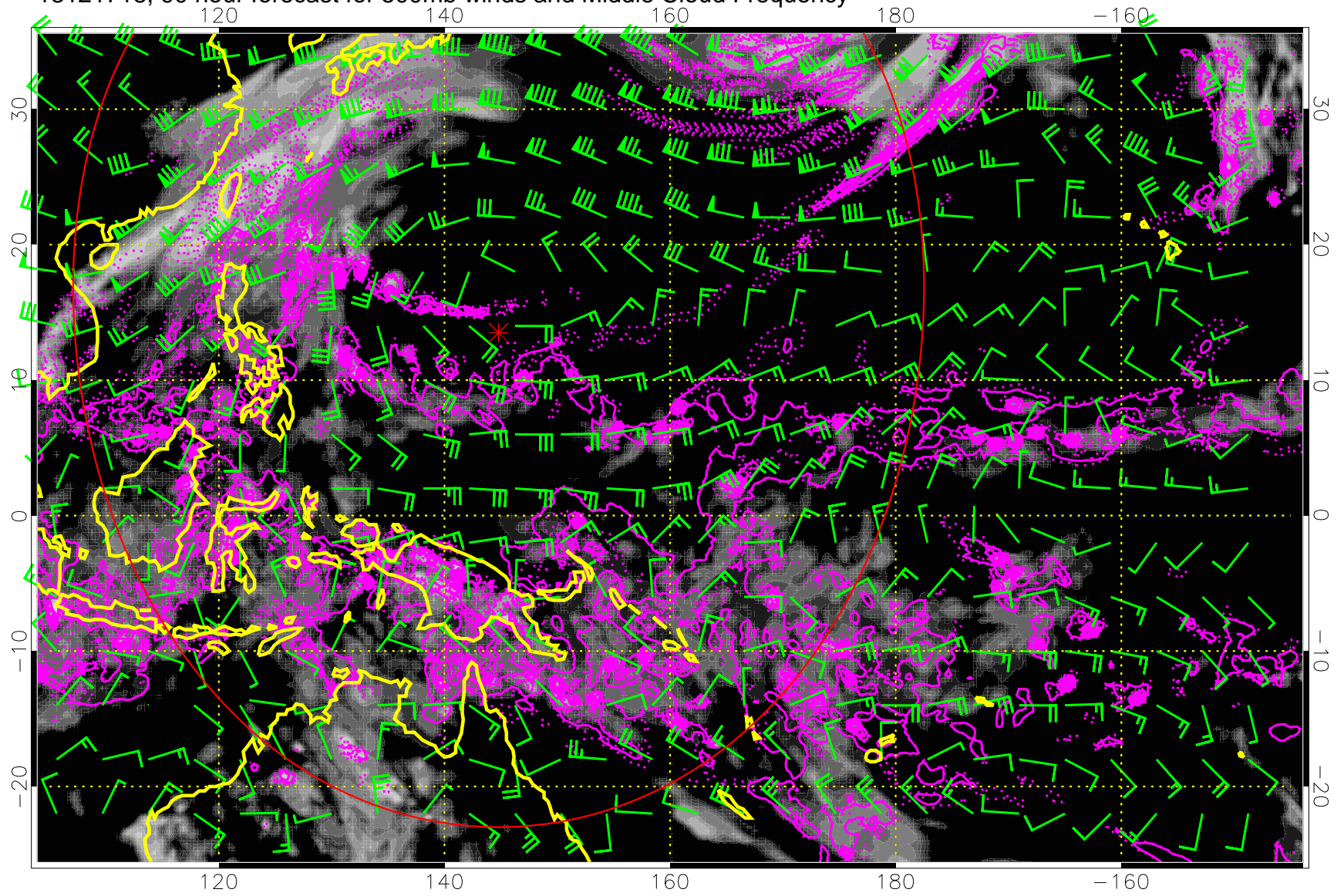
Precip (tot dot, conv sol) 6 mm/day contours, min 4

13121712, 84 hour forecast for 500mb winds and Middle Cloud Frequency



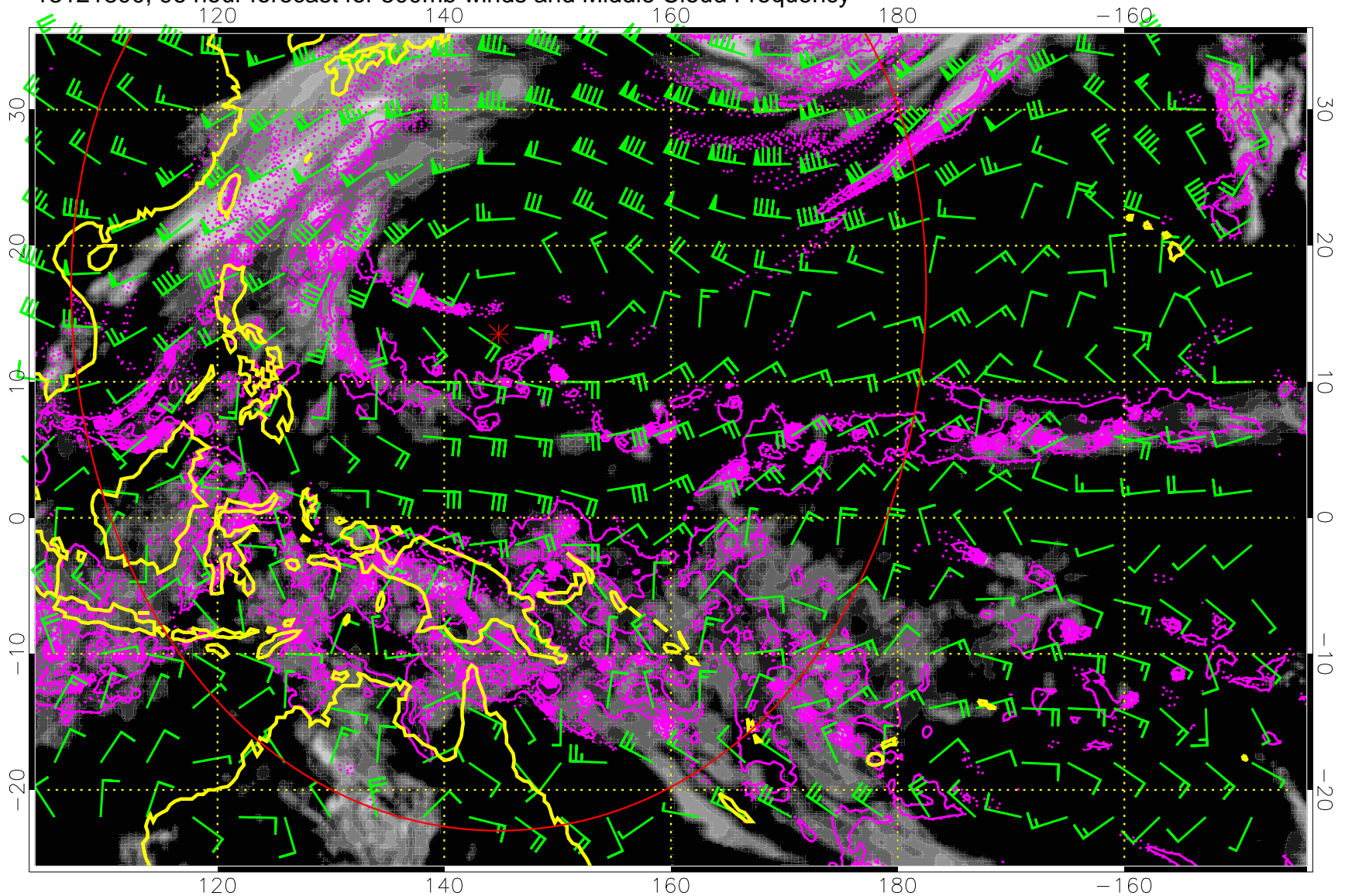
Precip (tot dot, conv sol) 6 mm/day contours, min 4

13121718, 90 hour forecast for 500mb winds and Middle Cloud Frequency



Precip (tot dot, conv sol) 6 mm/day contours, min 4

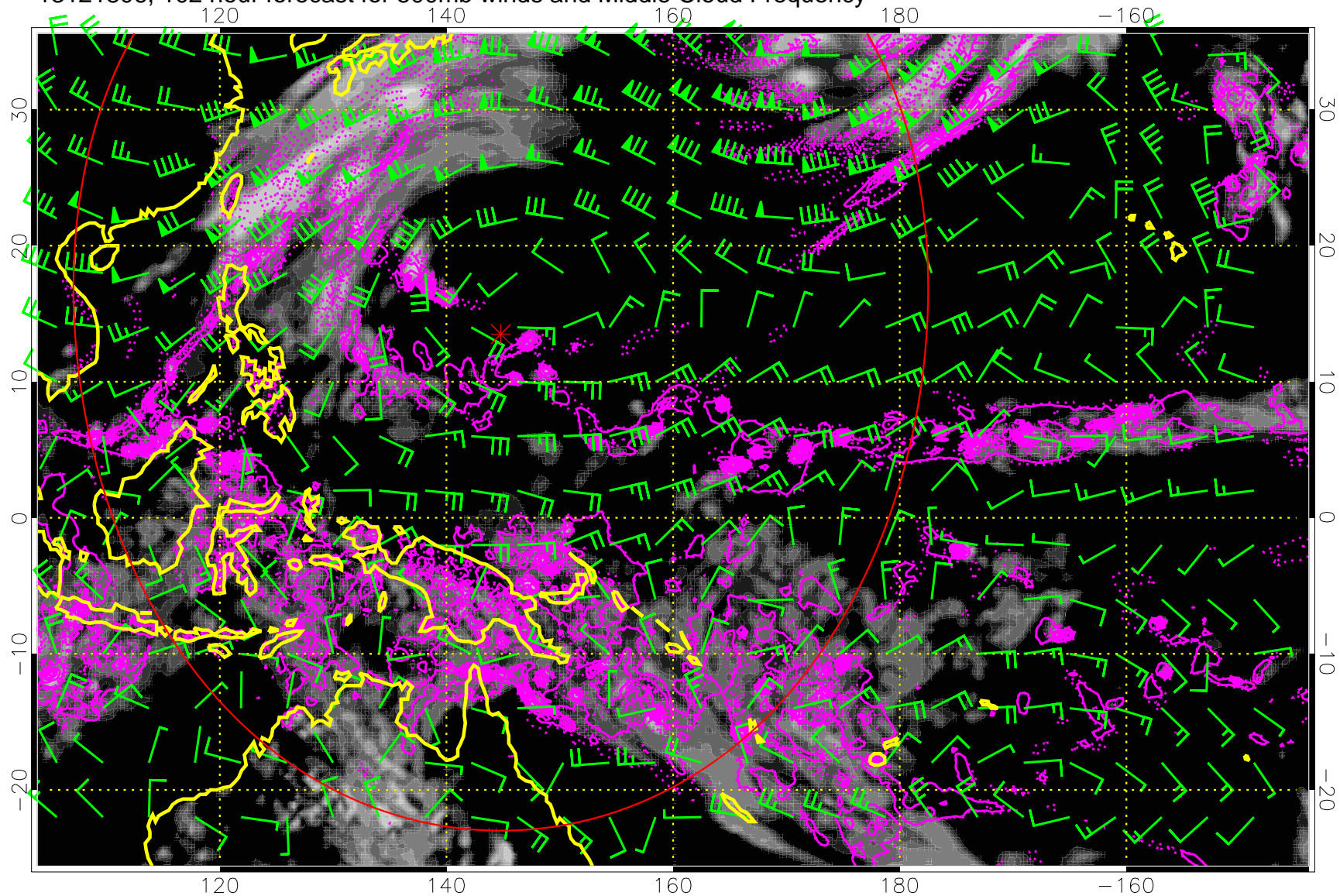
13121800, 96 hour forecast for 500mb winds and Middle Cloud Frequency



0.0 0.2 0.4 0.6 0.8 1.0
Middle Cloud Frequency

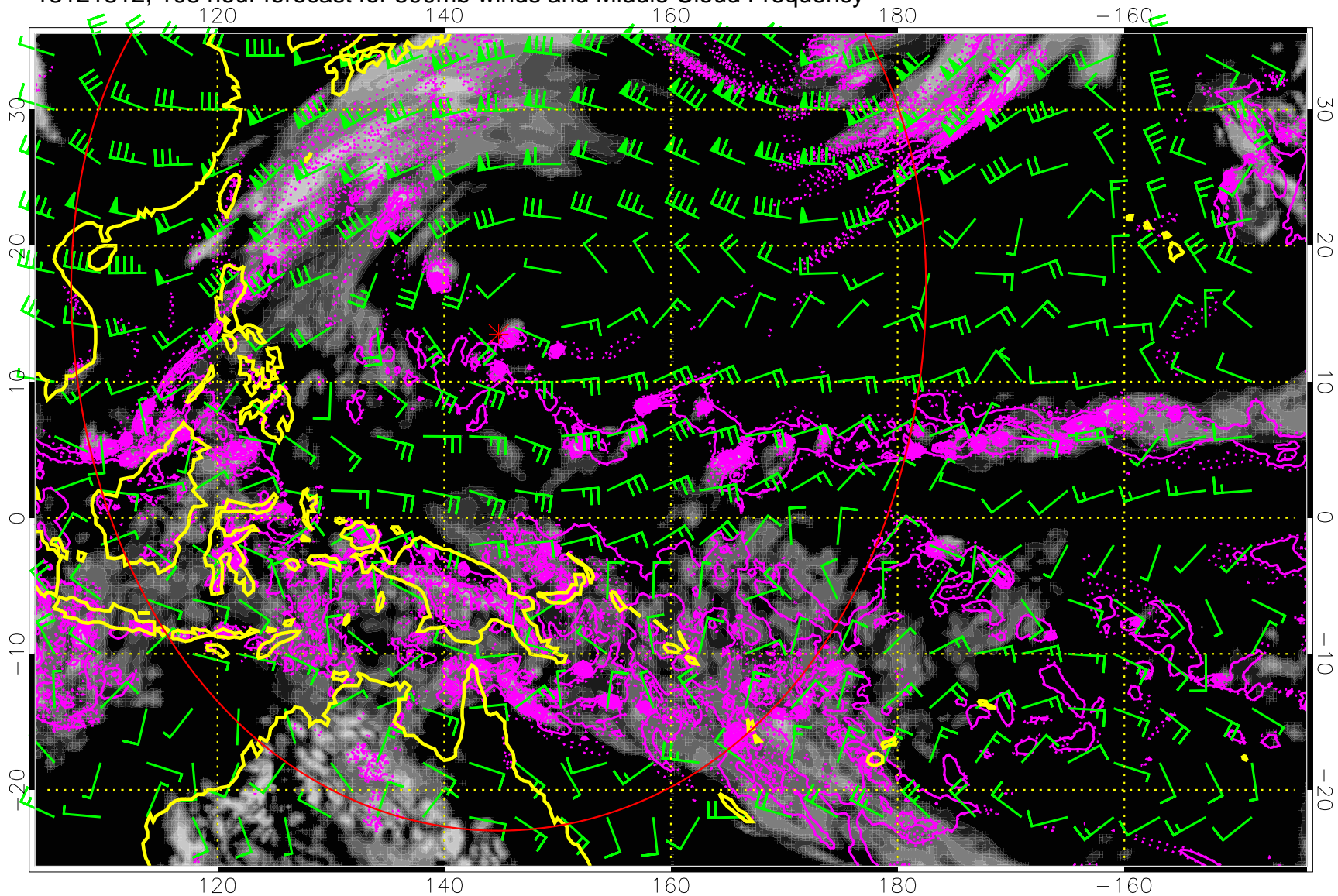
Precip (tot dot, conv sol) 6 mm/day contours, min 4

13121806, 102 hour forecast for 500mb winds and Middle Cloud Frequency



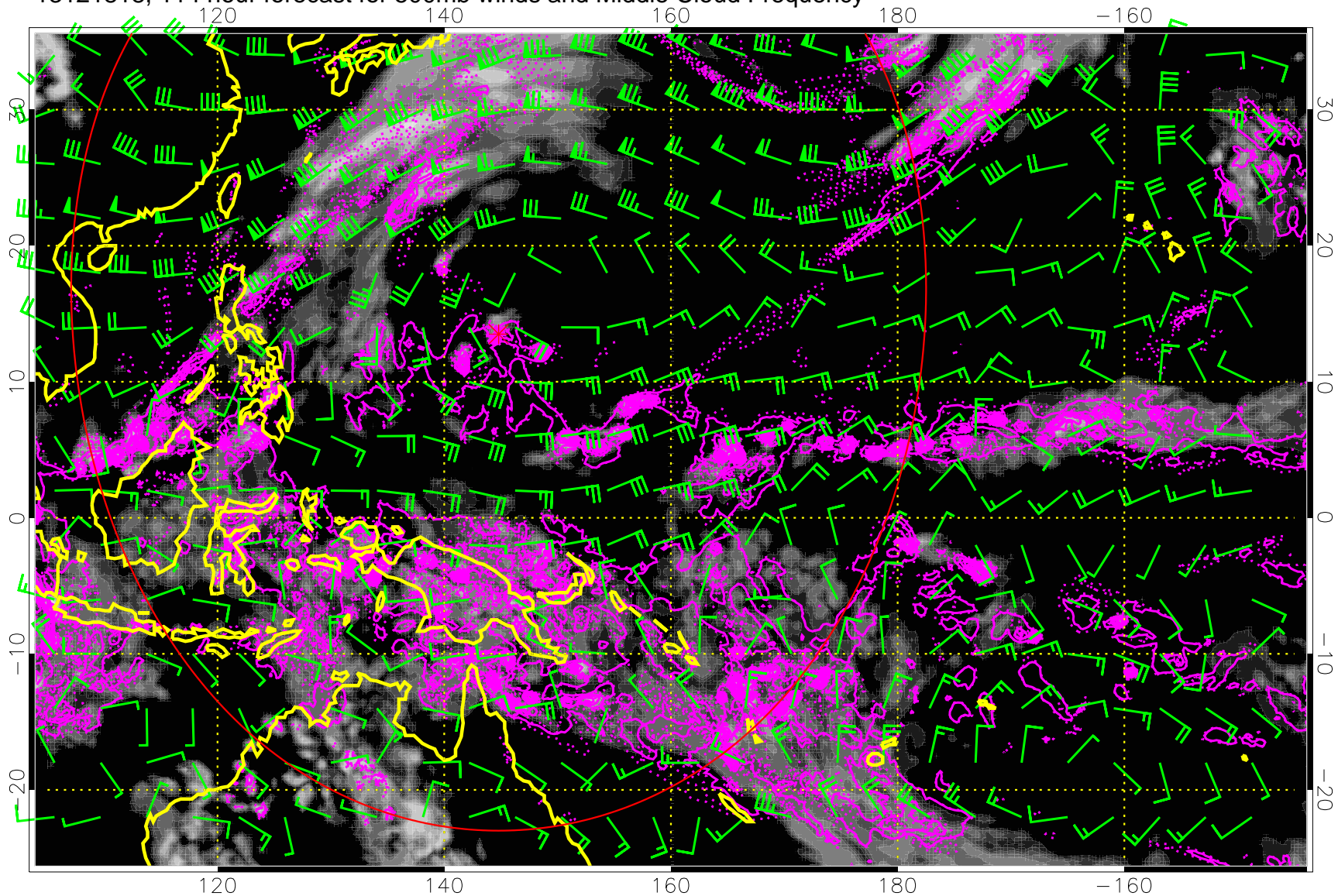
Precip (tot dot, conv sol) 6 mm/day contours, min 4

13121812, 108 hour forecast for 500mb winds and Middle Cloud Frequency



Precip (tot dot, conv sol) 6 mm/day contours, min 4

13121818, 114 hour forecast for 500mb winds and Middle Cloud Frequency



Precip (tot dot, conv sol) 6 mm/day contours, min 4