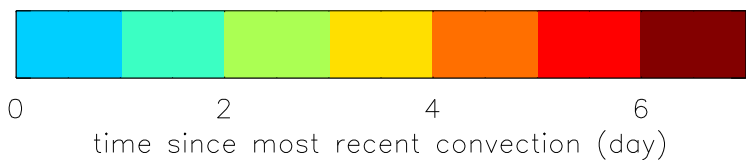
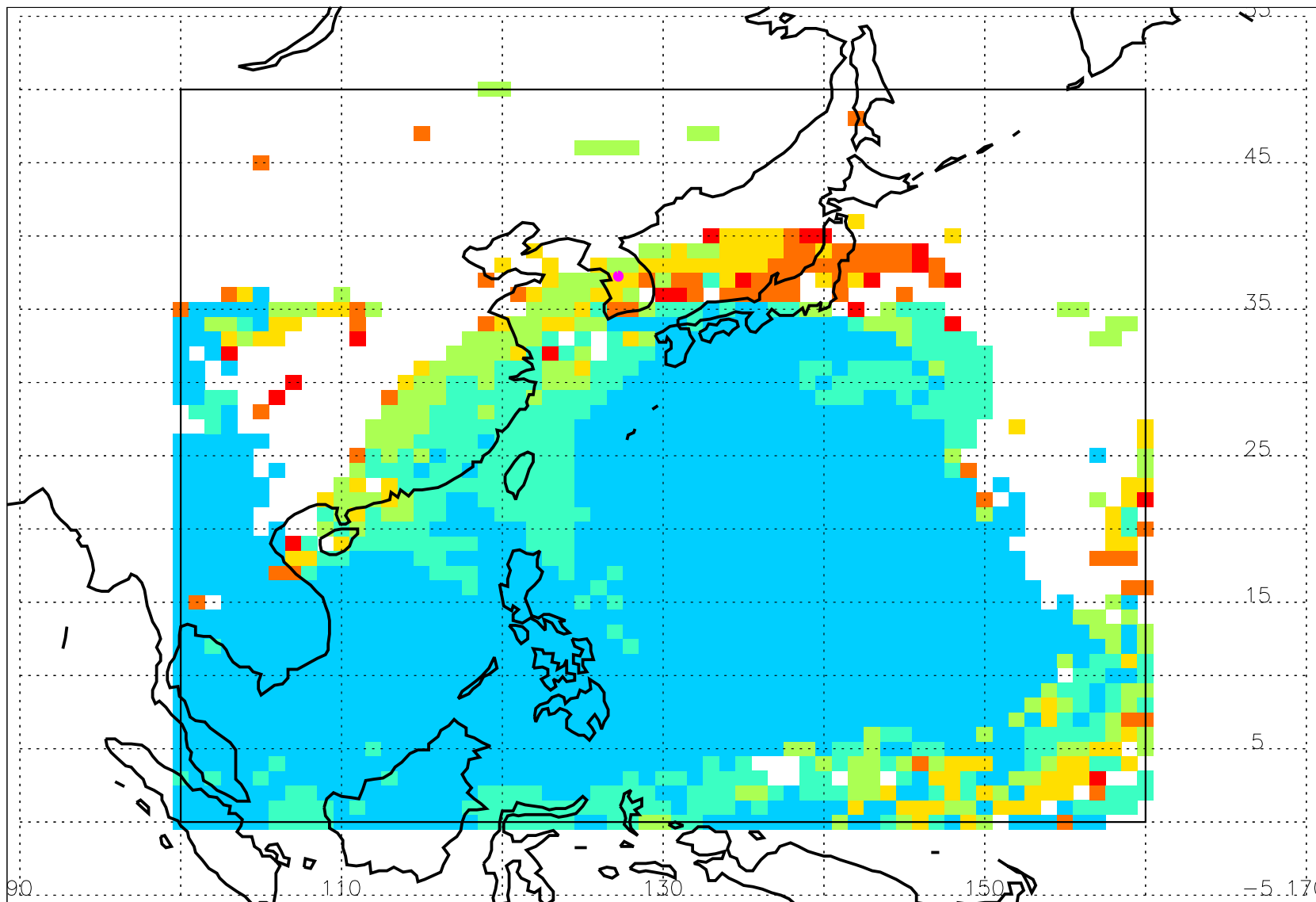


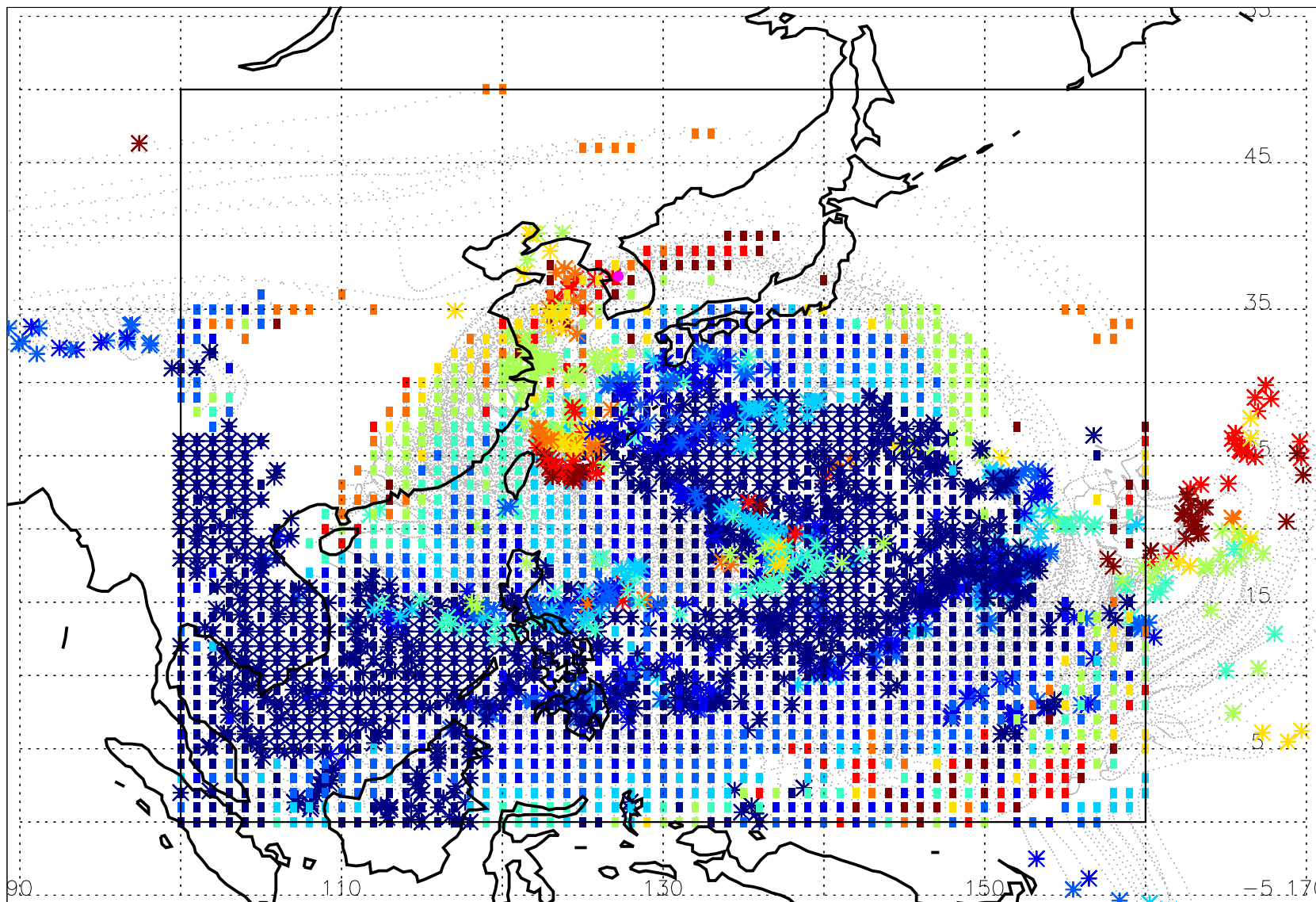
### Convectively-influenced 7-day back trajectory at 45 kft level from boxed region on 09/16/2022, 06Z

Fig. 1: Locations of parcels influenced by convection in the past 7 days. Time since most recent convection in color.



### Convectively-influenced 7-day back trajectory at 45 kft level from boxed region on 09/16/2022, 06Z

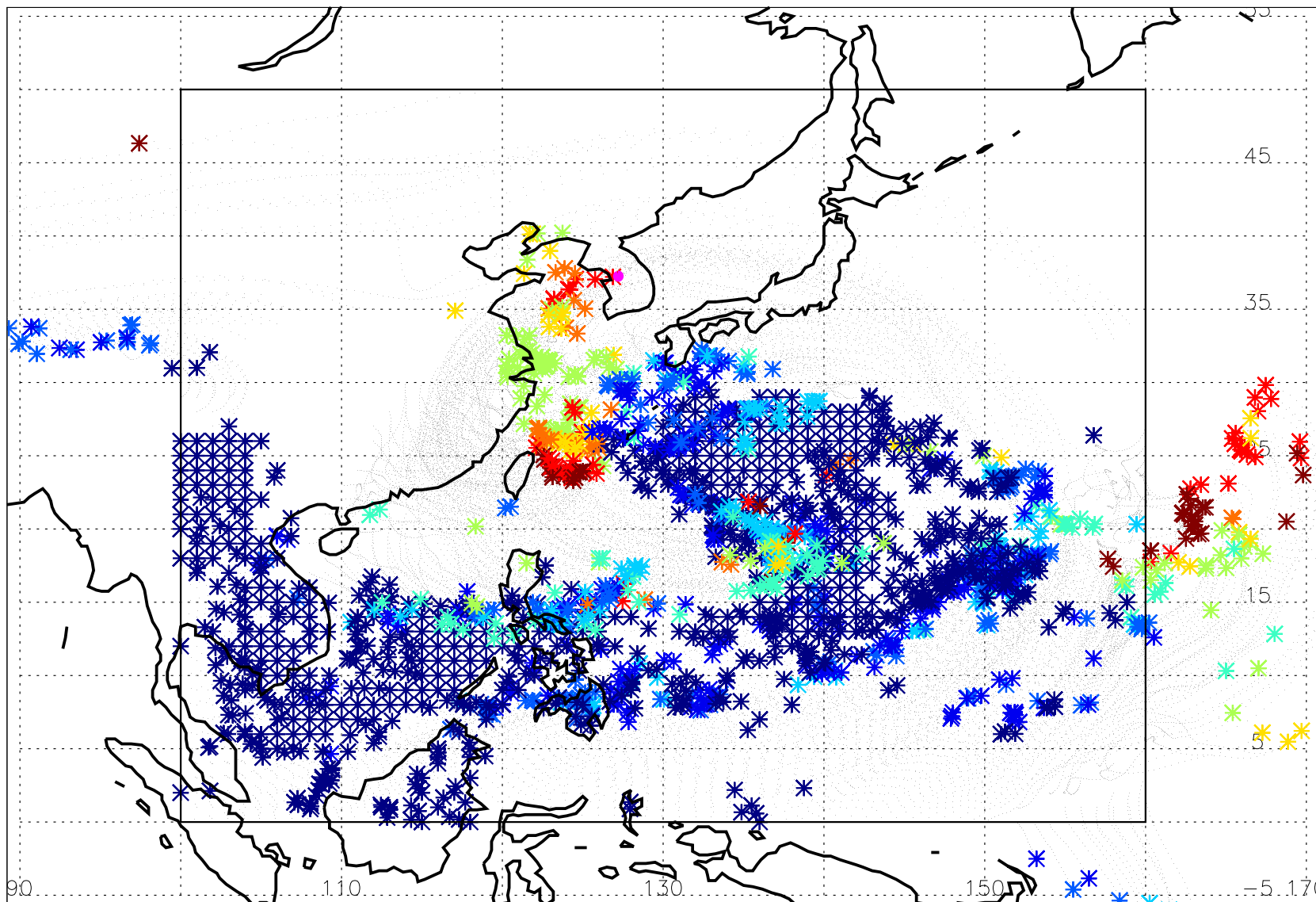
Fig. 2: Parcels influenced by convection within the last 3.5 days. Convection locations in asterisks.



0.0 0.5 1.0 1.5 2.0 2.5 3.0 3.5  
time since most recent convection (day)

### Convectively-influenced 7-day back trajectory at 45 kft level from boxed region on 09/16/2022, 06Z

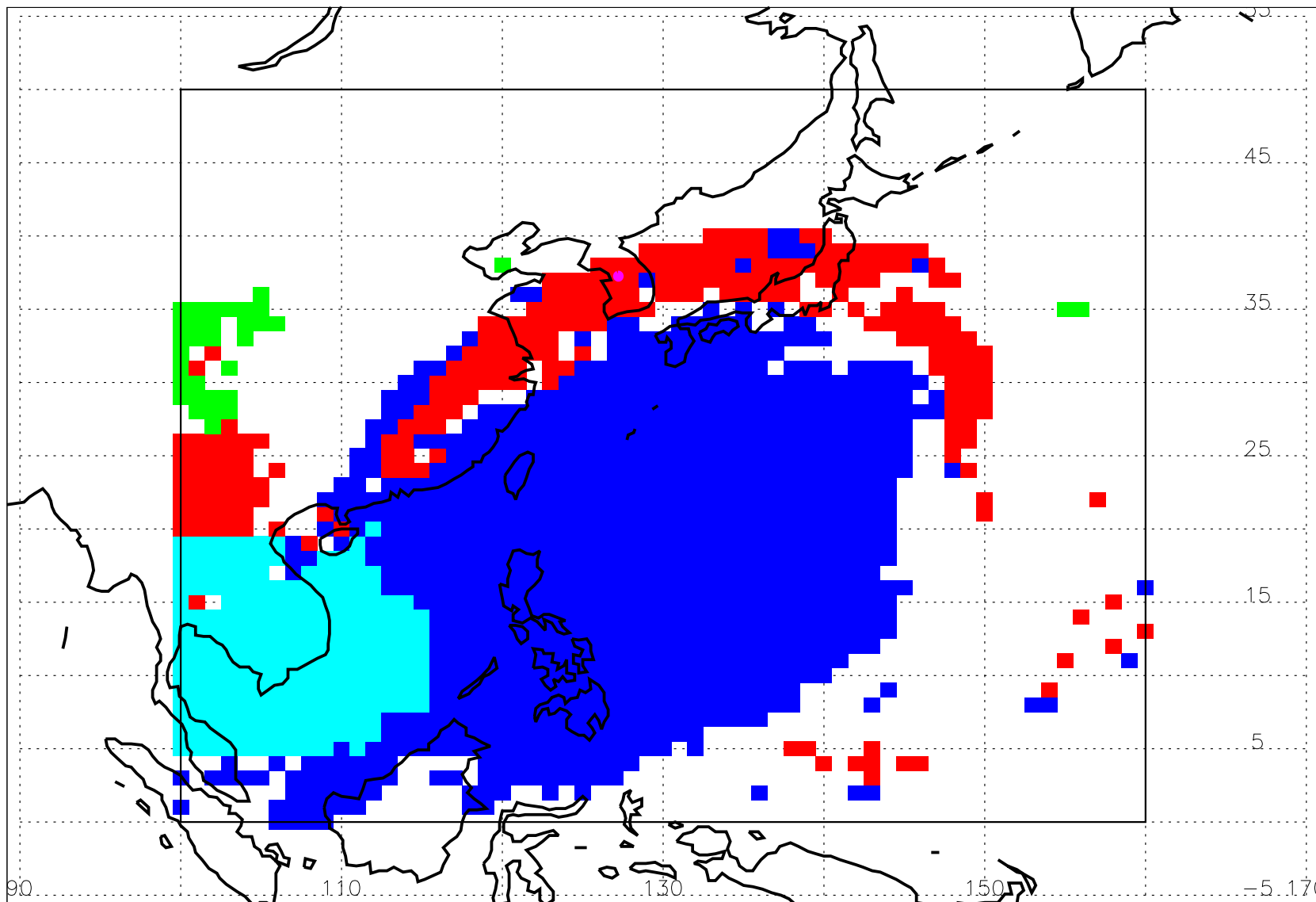
Fig. 3: Parcels influenced by convection within the last 3.5 days (As in Fig. 2 but convection locations only)



time since most recent convection (day)

### Convectively-influenced 7-day back trajectory at 45 kft level from boxed region on 09/16/2022, 06Z

Fig. 4: Convective source regions (in color) of most recent convection within the last 7 days



E China (20-40N, 100-125E)    SE Asia (5-20N, 90-115E)    Plateau S Flank (20-35N, 70-100E)    W Pacific (5-30N, 115-145E)